



**HAL**  
open science

# Low Benthic Macrofauna Diversity in Dynamic, Tropical Tidal Mudflats: Migrating Banks on Guiana's Coast, South America

Jérôme Jourde, Christine Dupuy, Hien T Nguyen, David Mizrahi, Nyls de Pracontal, Pierrick Bocher

## ► To cite this version:

Jérôme Jourde, Christine Dupuy, Hien T Nguyen, David Mizrahi, Nyls de Pracontal, et al.. Low Benthic Macrofauna Diversity in Dynamic, Tropical Tidal Mudflats: Migrating Banks on Guiana's Coast, South America. *Estuaries and Coasts*, 2017, 10.1007/s12237-016-0205-y . hal-01428844

**HAL Id: hal-01428844**

**<https://hal.science/hal-01428844>**

Submitted on 6 Jan 2017

**HAL** is a multi-disciplinary open access archive for the deposit and dissemination of scientific research documents, whether they are published or not. The documents may come from teaching and research institutions in France or abroad, or from public or private research centers.

L'archive ouverte pluridisciplinaire **HAL**, est destinée au dépôt et à la diffusion de documents scientifiques de niveau recherche, publiés ou non, émanant des établissements d'enseignement et de recherche français ou étrangers, des laboratoires publics ou privés.

1 **Low benthic macrofauna diversity in dynamic, tropical tidal mudflats: migrating banks**  
2 **on Guiana's coast, South America**

3 Jérôme Jourde<sup>1</sup>, Christine Dupuy<sup>1</sup>, Hien T. Nguyen<sup>1</sup>, David Mizrahi<sup>2</sup>, Nyls de Pracontal<sup>3</sup>,  
4 Pierrick Bocher<sup>1</sup>

5 ✉ Pierrick Bocher  
6 pbocher@univ-lr.fr  
7  
8

9 <sup>1</sup> Laboratory Littoral, Environnement et Sociétés (LIENSs) UMR 7266 CNRS–University of  
10 La Rochelle, 2 Rue Olympe de Gouges, 17000, La Rochelle, France  
11

12 <sup>2</sup> New Jersey Audubon Society, 600 Route 47 North, Cape May Court House, NJ 08210,  
13 USA  
14

15 <sup>3</sup> Groupe d'Etude et de Protection des Oiseaux de Guyane, 16 Avenue Pasteur - 97300  
16 Cayenne, French Guiana  
17  
18

19 **Abstract**

20 In tropical South America, the mudflats of the Amazonian coast are unique because of their  
21 large size and unrivaled migration dynamics. On Guiana's coast, macrofaunal communities  
22 are believed to be well-adapted to these dynamic conditions. In this study, the benthic  
23 macrofauna was sampled in April 2012 in the Awala-Yalimapo region of western French  
24 Guiana and at two sites in Suriname, Warappa Kreek and Bigi Pan, These sites are found 800,  
25 920, and 1,140 km from the Amazon delta, respectively. The richness, diversity, and densities  
26 of the macrofaunal communities in these mudflats are here described for the first time. Only  
27 38 OTU were recorded, among which two species were common and widely distributed: the  
28 tanaid crustacean *Halmyrapseudes spaansi* and the polychaete *Sigambra grubii*; the former  
29 represented 84% of all individuals collected, with densities reaching up to 73,000 individuals.  
30 m<sup>-2</sup>. Most of the OTU consisted of relatively small individuals (< 10 mm in length). The very  
31 low richness and diversity and the small sizes of the organisms are likely linked to the  
32 instability and softness of the substrate on these mudflats. This study suggests that the  
33 differences in macrofaunal community composition among sites could be due to the migration  
34 stage of banks rather than the distance from the Amazon Delta and associated effects of river  
35 discharge.

36 **Keywords:** Amazon influence, tropical mudflats, soft-bottom macrobenthos, communities,  
37 dynamic habitat.

38

## 39 **Introduction**

40 The mudflats of the Amazonian coast in South America are unique because of their size and  
41 dynamics. The coastline between the Amazon and Orinoco Rivers (ca. 1,500 km long), often  
42 referred to as the "Guianan Coast," is considered the muddiest in the world because of the  
43 large flow of suspended sediment from the Amazon River ( $754 \text{ Mt y}^{-1} \pm 9\%$ ; Martinez et al.  
44 2009). The fluid mud is transported along the Guianan coast in a series of large migrating  
45 mudbanks resulting from complex interaction among waves, tides, wind and coastal currents.  
46 The physical dynamics of these mudbanks have been studied extensively in French Guiana  
47 (Augustinus 1978; Eisma et al. 1991; Allison et al. 2000; Allison and Lee 2004; Baltzer et al.  
48 2004; Gratiot et al. 2007; Anthony et al. 2010). These migrating mudflats, at least 15 in all,  
49 each 10–60 km long, 20–30 km wide (126,000 km<sup>2</sup> area) and thickness up to 5 m, travel  $> 1$   
50 km y<sup>-1</sup> from Brazil to eastern Venezuela (Gardel and Gratiot 2005). The mudflats are  
51 associated with space- and time-varying depositional ‘bank’ phases and erosional ‘inter-bank’  
52 phases, which lead to either rapid settlement or destruction of mangroves, depending on the  
53 level of accretion or erosion of the intertidal fringe. The specific characteristics of each  
54 sedimentary area depend on the tidal range and swells. These induce strong sedimentation  
55 rates of homogeneous fluid mud, often several meters thick, while tides induce repeated  
56 sedimentation of several centimetres, depending on sediment availability (Gensac et al. 2015).

57 Although the dynamics of mudbanks along the Guianan coast have been studied  
58 extensively in recent years, data on infaunal biodiversity, community structure, and thus food  
59 web function is lacking for this highly dynamic and unstable environment. Macrofauna,  
60 sometimes defined as metazoans retained by a sieve with a 1-mm square mesh opening (Mare  
61 1942; Bachelet 1990), is usually a major component of the total biomass and plays a central  
62 role in the functioning of these ecosystems (Gray and Elliot 2009). Surprisingly, only two  
63 studies on macrofaunal biodiversity and abundance have been conducted in this region over  
64 the last 30 years. The first provided data on the main OTU occurring along Suriname's coast,  
65 but lacked species-level identification for many organisms (Swennen et al. 1982). The second  
66 study was conducted in the Kaw Estuary in French Guiana, but had only a limited number of  
67 sampling stations (Clavier 1999). Despite these shortcomings, both studies found low

68 macrofaunal diversity and the dominance of very few taxa such as tanaidaceans, although  
69 densities were highly variable depending on the habitat sampled. However, a recent study on  
70 the structure of meiofauna in French Guiana and Suriname mudflats indicates a very  
71 productive zone with a thick biofilm of microphytobenthos and prokaryotes (up to 1 mm  
72 thick. Gensac et al. 2015), coupled with a high abundance and biomass of meiofauna, mainly  
73 dominated by nematodes (Dupuy et al. 2015). Local sediment granulometry and organic  
74 matter content appeared to drive the size structure and functional characteristics of nematodes.  
75 Despite the high instability of mudflats in this region, chlorophyll *a*, biomass and meiofauna  
76 abundance always tend to be higher than in other areas such as temperate European or tropical  
77 Australian and Vietnamese mudflats (Dupuy et al. 2015). Consequently, the question arises if  
78 this biofilm could be essential in food web function through direct trophic links with the  
79 macrofauna, and thus support a rich benthic community.

80 In the present study, sediment characteristics, and richness, diversity, and density of  
81 the benthic macrofaunal communities are documented at three sites along the coast of French  
82 Guiana and Suriname. It is hypothesized that differences in these characteristics are  
83 determined by the relative distance from the Amazon Delta, the sediment source for these  
84 coastal mudbanks. It is also postulated that because of the highly dynamic nature of  
85 mudbanks, richness and diversity of macrofaunal benthic communities will differ from other  
86 tropical or temperate mudflats. Biometric measures (individual size/length) of macrofaunal  
87 organisms are documented in this study based on the premise that highly dynamic conditions  
88 along the Guianan coast limit the occurrence of large-bodied macrofaunal species.  
89 Consequently, it is expected that findings of the present study will support the theory of a  
90 complex diversity-stability relationship, in which high environmental variability results in  
91 fewer species and greater evenness (Lehmann-Ziebarth and Ives 2006).

92

## 93 **Methods**

### 94 **Study sites**

95 The study was conducted at one site in the Awala-Yalimapo region of western French Guiana,  
96 near the mouth of the Maroni River (05°44'44"N; 53°55'36"W), and at two sites in Suriname,  
97 Warappa Kreek, Commewijne district (05°59'33"N; 54°55'50"W) and Bigi Pan, Nickerie  
98 District (05°59'09"N; 56°53'03"W), near the mouth of the Corentyne River (Fig. 1). The sites

99 are located 800, 920 and 1,140 km, respectively, from the Amazon Delta. Tides at all three  
100 sites are semidiurnal with a range of 0.8–2.9 m. The Awala site was at the leading edge of a  
101 mudbank composed of very fluid mud, and below a bare sandy beach. The site was adjacent  
102 to an area with young mangrove trees on somewhat consolidated mud. The Bigi Pan and  
103 Warappa sites were closer to the trailing edges of two different mudbanks and characterized  
104 by an erosive area (consolidated muds with micro-cliffs) crowded with dead trees lying in the  
105 mud, situated below a sandy shore that was partially colonized by adult mangrove trees.  
106 Sampling stations were below this erosive area.

### 107 **Sampling strategy**

108 All intertidal stations were sampled in April 2012 (wet season). At each site, five to six  
109 stations close to the shore were visited on foot. They were positioned a priori using GPS, such  
110 that adjacent stations were separated by a 200–300 m distance. However, given the difficulty  
111 of sampling the soft sediment at low tide, and of dealing with the fast moving ebbing or rising  
112 tides at high tide, actual stations were selected 5–15 m from the shore depending on mudflat  
113 conditions at the time of sampling. This explains variations in the distance between stations  
114 (Fig. 1). The mean distance among stations was  $285 \pm 20$  m (standard deviation, SD) at  
115 Awala,  $340 \pm 105$  m (W10–W14) at Warappa and  $245 \pm 90$  m at Bigi Pan.

116 Additionally, the availability of a boat at Warappa Kreek allowed sampling a 2-km  
117 intertidal transect perpendicular to the shore (Fig. 1). There were nine stations on this transect,  
118 eight sampled by boat (W1–W8), and one (W9) sampled on foot. The mean distance ( $\pm$ SD)  
119 between stations was  $260 \pm 17$  m (W1–W9).

120 For each nearshore station, six replicate sediment samples were haphazardly collected,  
121 avoiding trampling the area, with a plastic corer (15-cm internal diameter) to a depth of 20  
122 cm. For the intertidal transect at Warappa, a metal vacuum corer with a 10-cm internal  
123 diameter was used, and two cores were combined into one sample. There were six of these  
124 combined samples per station (Bocher et al. 2007). Sampling from a boat or on foot yields  
125 identical estimates (Kraan et al. 2007). All samples were sieved through a 0.5-mm mesh and  
126 organisms retained on the sieve were fixed in 70% ethanol.

### 127 **Sediment characteristics**

128 At every station, a sediment sample was taken to a maximum depth of 4–5 cm to evaluate  
129 grain size. The sediment grain size was characterized using a Malvern Mastersizer 2000

130 (Malvern Instruments Ltd, U.K.) (size range: 0.02–2000  $\mu\text{m}$ ). Results were computed using  
131 Gradistat version 4.0 software and expressed as percentages of different grain size classes and  
132 geometric mean grain size. The different size classes given by Gradistat were grouped into  
133 four main categories: silt and clay ( $< 63 \mu\text{m}$ ), fine sand ( $63 \mu\text{m}$ – $250 \mu\text{m}$ ), medium sand ( $250$   
134  $\mu\text{m}$ – $500 \mu\text{m}$ ) and coarse sand ( $500 \mu\text{m}$ – $2000 \mu\text{m}$ ).

### 135 **Macrofaunal sorting and species identification**

136 In the laboratory, samples were stained with the vital stain Rose Bengal to improve sorting  
137 and washed on a 0.5-mm mesh sieve. All individuals were first sorted into major taxonomic  
138 groups (e.g., annelids, tanaidaceans, crustaceans other than tanaidaceans, molluscs and  
139 insects). In several cases, samples containing a high abundance of tanaidaceans were further  
140 subdivided using a Motoda box to estimate the total abundance of tanaids (Motoda 1959).  
141 Macroinvertebrates were identified using a Leica MZ205C stereomicroscope and, when  
142 necessary, an Olympus BH-2 compound microscope. Whenever possible, organisms were  
143 identified to the species level. Unfortunately, infaunal taxonomic literature is limited for this  
144 poorly studied, biogeographical region. To deal with the issue of identification to levels of  
145 species, genus, family or higher, the term OTU (Operational Taxonomic Units) is used in the  
146 present study. Faunal data available for statistical analyses were richness (i.e., number of  
147 OTU recorded) and density. These metrics were used to compute the occurrence (% of  
148 occurrence in stations of the whole data set or of a cluster where the OTU was recorded),  
149 frequencies (% of individuals of a given OTU out of all individuals recorded across all  
150 stations or for a cluster of stations), and the Shannon diversity index ( $(\log 2) H'$ . Shannon and  
151 Weaver 1949). Biometric data (individual body length) were acquired using Leica  
152 stereomicroscope software (LAS).

### 153 **Statistical analyses**

154 One-way analysis of variance (ANOVA) and post-hoc Dunn's multiple comparison tests were  
155 performed on geometric mean grain size among sites (Awala, Bigi Pan, Warappa nearshore  
156 stations and Warappa offshore transect). Normality of the data was evaluated using a Shapiro-  
157 Wilk test. Taxonomic richness (S), density (N) and Shannon diversity index ( $H'$ ) data were  
158 not normally distributed (Shapiro-Wilk test:  $P < 0.05$ ), so Kruskal-Wallis one-way ANOVA  
159 on ranks was used to test for differences in each variable (S, N and  $H'$ ) among sites.  
160 Subsequently, post-hoc Dunn's pairwise multiple comparison tests were performed for the  
161 three variables to allow a comparison among sites.

162 Community statistical analyses were performed using Primer 6 software (Clarke and  
163 Gorley 2006). Hierarchical clustering and multidimensional scaling (MDS) of the stations  
164 were obtained from a Bray-Curtis similarity matrix computed with fourth root-transformed  
165 species densities. The SIMPROF routine ('SIMilarity PROFile' permutation tests) was used  
166 to identify genuine clusters (at a 5% significance level) to better define groups of stations  
167 using hierarchical clustering. The SIMPER routine (SIMilarity PERcentages) was performed  
168 to answer the questions of which OTU structured the clusters (90% cutoff for low  
169 contributions) and which contributed to dissimilarity. It was considered that a "good"  
170 discriminating OTU shows a ratio of dissimilarity to standard deviation between clusters  
171  $(\text{Diss}/\text{SD}) > 1.5$  (Wildsmith et al. 2009).

172

## 173 **Results**

### 174 **Sediment characteristics**

175 No obvious granulometric gradient was detected among the three study sites based on their  
176 distance from the Amazon Delta. The intertidal substrate was devoid of macro-vegetation and  
177 was mostly comprised of fine silt and clay (Table 1; ESM 1) at every site. Thus, mud  
178 accounted for > 99% of the total sediment in all nearshore stations of Awala and Warappa. In  
179 Bigi Pan, sand accounted for almost 10% (B1, B5 and B6), with mud content ranging between  
180 89.3 and 98.6%. On the Warappa transect, at stations W1 to W6, sand percentages were  
181 higher, reaching almost 25% at the most remote station (W1). Transect stations closest to the  
182 coast (W7 and W8) had a similar mud content to nearshore stations. Mean grain size was  
183 consistently < 10  $\mu\text{m}$  for all nearshore stations (Table 1). Values differed significantly among  
184 sites (one-way ANOVA,  $F = 17.236$ ,  $df = 3$ ,  $P < 0.001$ ). Post-hoc Dunn's multiple  
185 comparison tests indicated that the mean grain size for Warappa transect stations was  
186 significantly different from Awala and Warappa nearshore stations ( $P < 0.05$ ), but not from  
187 Bigi Pan ( $P > 0.05$ ).

### 188 **Richness**

189 Thirty-eight OTUs were identified across the three study sites (Table 2), 16 at Awala, 28 at  
190 Warappa (22 offshore, 11 nearshore) and 14 at Bigi Pan. Among these OTU, 50% were  
191 identified to the species level and another 18% to genus. Among the 38 OTU, 7 were  
192 Crustacea, 13 Polychaeta and 13 Mollusca. Two species showed an occurrence > 50% and

193 were widely distributed among sites (Table 2): the tanaid *Halmyrapseudes spaansi* was  
194 present at every station and the polychaete *Sigambra grubii* was recorded at 76% of the  
195 stations, including 100% of the nearshore stations. Other OTU found at the three sites were  
196 the tanaid *Discapseudes surinamensis* (Crustacea: Tanaidacea), the bivalve *Macoma*  
197 *constricta* (Mollusca: Bivalva) and nemerteans. Ten OTU were recorded at two sites and 22  
198 were sampled at only one station (three in Awala, 16 in Warappa and three in Bigi Pan), out  
199 of which 12 were encountered at only one station (Table 2) and 13 along the Warappa  
200 transect. The highfin goby *Gobionellus oceanicus* was the only fish species found residing in  
201 mud during low tide, where it inhabits U-shaped burrows (Puyo 1949 in Pezold 2004;  
202 Lefrançois, University of La Rochelle, pers. com.). This species was mainly recorded at  
203 Awala, but was also found at Warappa. Larvae of long-legged flies (Dolichopodidae) were  
204 found in Awala and at all Bigi Pan stations.

205 Mean taxonomic richness differed significantly among sites (Kruskal-Wallis one-way  
206 ANOVA on ranks,  $H = 14.201$ ,  $df = 3$ ,  $P = 0.003$ ). However, a post-hoc Dunn's multiple  
207 comparison test showed that mean taxonomic richness differed significantly only between  
208 Bigi Pan and both Warappa groups ( $P < 0.05$ ). At the site scale, total richness by station was  
209 3–11 OTU in Awala (Table 2), and mean richness (Fig. 2A) ranged from 1.3 (A2) to 5.8 OTU  
210 (A5). At Warappa stations, total richness ranged from 2 to 11 OTU. Whereas 6–11 OTU were  
211 recorded at transect stations, total richness was lower at nearshore stations with 2–7 OTU  
212 (Table 2). This difference, however, was not supported by mean richness, which ranged from  
213 2.5 to 3.0 OTU per station for the whole site (Fig. 2A) (post-hoc Dunn's pairwise multiple  
214 comparison test between Warappa transect and nearshore stations:  $P > 0.05$ ). At Bigi Pan,  
215 total and mean richness (7–9 OTU and 4.0–5.2 OTU, respectively) were homogenous and  
216 among the highest recorded in the present study.

### 217 **Densities and diversities**

218 Considering all OTU values by station, individual densities ( $\pm$  SD) ranged widely from  $72 \pm$   
219  $56 \text{ ind. m}^{-2}$  at A2, up to  $31,000 \pm 27,000 \text{ ind. m}^{-2}$  at B3 (Fig. 2B), which contributed to the  
220 significant differences recorded among sites (Kruskal-Wallis one-way ANOVA on ranks,  $H =$   
221  $20.072$ ,  $df = 3$ ,  $P < 0.001$ ). A post-hoc test identified differences among Bigi Pan and both  
222 Awala and Warappa transect stations, as well as between Warappa nearshore and transect  
223 stations ( $P > 0.05$ ), but not between Warappa nearshore stations and Awala ( $P > 0.05$ ).



224           Lowest values (100–300 ind. m<sup>-2</sup>) were recorded at Awala and at the most distant  
225 stations along the offshore transect. This contrasted with densities recorded, up to ca. 11,000  
226 ind. m<sup>-2</sup>, at nearshore Warappa stations, and up to ca. 31,000 ind. m<sup>-2</sup> at Bigi Pan, where  
227 densities were always > 10,000 ind. m<sup>-2</sup>. The W8 station was singular within the offshore  
228 transect since it presented a density comparable to nearshore stations (Fig. 2B). No significant  
229 difference was found, however, between densities at Bigi Pan and Warappa nearshore stations  
230 (Dunn's post-hoc test,  $P > 0.05$ ). Indeed, some stations at Bigi Pan showed high variability,  
231 with replicates ranging by two orders of magnitude, from 484 ind. m<sup>-2</sup> to ca. 40,000 ind. m<sup>-2</sup>.

232           In this study, only three species represented > 1% of the total of individuals counted  
233 per station: *Halmyrapseudes spaansi* (84.5%), *Sigambra grubii* (7.9%) and *Discapseudes*  
234 *surinamensis* (5.3%). Each of the remaining OTU accounted for < 0.4% of all individuals  
235 counted.

236           Taxonomic diversity (Shannon index  $H'$ ), which reflects taxonomic richness and the  
237 relative densities of the OTU, differed among stations within sites, ranging from twofold in  
238 Bigi Pan up to tenfold in Awala. Thus, mean  $H' \pm SD$  ranged from  $0.17 \pm 0.41$  to  $1.74 \pm 0.30$   
239 (Fig. 2C).

#### 240 **Size of macrobenthic organisms**

241           An important common characteristic of the macrobenthic community in intertidal mudflats of  
242 the Guianas coast was the small size of most individuals. Among the three most common  
243 OTU, no individuals were > 13 mm long. Mean length ( $\pm SD$ ) of *H. spaansi* was  $3.8 \pm 1.0$   
244 mm (1.7–8.6 mm,  $n = 653$ ),  $7.8 \pm 2.8$  mm (2.5–12.9 mm,  $n = 146$ ) for *D. surinamensis* and  
245  $6.6 \pm 1.7$  mm (2.1–13.0 mm,  $n = 40$ ) for the polychaete *S. grubii*. The shell length (greatest  
246 antero-posterior length) of all bivalves was 2.1 to 8.4 mm, with the exception of *Macoma*  
247 *constricta* ( $11.2 \pm 5.1$  mm, ( $n = 6$ ) and *Tagelus plebeius*, with two individuals with a shell  
248 length of 11.9 and 12.7 mm. The most common gastropods, *Assimineea succinea* and  
249 *Cylichnella bidentata*, had a mean shell height ( $\pm SD$ ) of  $1.3 \pm 0.3$  mm ( $n = 54$ ) and of  $2.1 \pm$   
250  $0.4$  mm ( $n = 15$ ), respectively. Few annelids exceeded 20 mm. The largest organisms was the  
251 fish, *G. oceanicus*, with a mean length of  $14.3 \pm 5.1$  mm ( $n = 28$ ), and maximum length of  
252 32.9 mm.

#### 253 **Macrofaunal assemblages**

254 Hierarchical clustering of stations using SIMPROF and MDS revealed four clusters (Fig. 3;  
255 ESM 2): Awala (A), Bigi Pan (B), Warappa nearshore (Wn) and Warappa offshore (Wo); and  
256 two outliers: A2 and W7. All were organized in two main clusters, with the offshore Warappa  
257 stations (W1–W6) found to be clearly different from all inshore stations. The exception was  
258 W8, a priori considered an offshore station, which appeared similar to the inshore Warappa  
259 stations, and the outlier W7. In general, the four clusters (A, B, Wn & Wo) grouped stations  
260 from the same site. Station W7 was distinct from both nearshore cluster (A, B and Wn) and  
261 Wo, remaining in an intermediate position more closely associated with the Wo stations.  
262 Station A2 was in the nearshore stations cluster, but segregated from the three assemblages A,  
263 B and Wn.

264 The main OTU contributing to similarity within site clusters are shown in Table 3  
265 (SIMPER results). The tanaid *Halmyrapseudes spaansi* appeared to be the main contributor,  
266 especially at nearshore stations in Warappa and Bigi Pan. The polychaete *Sigambra grubii*  
267 characterized nearshore assemblages (A, B, Wn). Moreover, these two species were  
268 responsible for > 90% of the similarity within the Wn cluster. The remaining OTU in Table 3  
269 were typical of different clusters. Thus, the gastropod *Assimineia succinea*, the fish  
270 *Gobionellus oceanicus* and polychaete *Streblospio gynobranchiata* distinguished cluster A.  
271 Cluster B was distinguished by the tanaid *Discapseudes surinamensis*, the capitellid  
272 polychaete *Heteromastus* sp. and the Dolichopodidae insect family. The offshore cluster (Wo)  
273 was typified by an unidentified lumbrinerid polychaete (cf. *Abyssoninoe* sp. likely to be an  
274 undescribed species, Carrera-Parra, El Colegio de la Frontera Sur, pers. com.), the gastropod  
275 *Cylichnella bidentata*, the polychaetes *Alitta* sp., *Mediomastus* sp. and an unidentified orbiniid  
276 polychaete (cf. *Scoloplos* sp.).

277 Concerning the outliers (A2 and W7), OTU frequencies ( $100 \cdot N_i / N_t$ , where  $N_i$  is the  
278 density of OTU  $i$  and  $N_t$  is the total density at the station) were used to describe the faunal  
279 community structure (Table 3). Thus, A2 was mainly characterized by *S. grubii* and *H.*  
280 *spaansi*, and thus explains its inclusion in the nearshore station cluster. In the W7 cluster, the  
281 most important species were the capitellid polychaetes (other than *Mediomastus* sp. and  
282 *Heteromastus* sp.), *Mediomastus* sp. as well as oligochaetes. Species characteristic of other  
283 clusters, such as *H. spaansi* and *S. grubii* (nearshore clusters), *D. surinamensis* (B) and the  
284 Lumbrineridae species (Wo), that were also present in W7, also likely contributed to explain  
285 W7 intermediate status.

286 The OTU mainly responsible for similarities within clusters were the main OTU  
287 allowing discrimination among clusters (Table 4). However, distinguishing OTU could be  
288 split into two categories: ‘typical’ OTU, mainly, if not exclusively, recorded from one cluster  
289 (e.g., *A. succinea*, *Alitta* sp., *C. bidentata*, *D. surinamensis*, Dolichopodidae, *G. oceanicus*,  
290 *Heteromastus* sp., Lumbrineridae; ESM 3) and ‘ubiquitous’ OTU (e.g., *H. spaansi*), widely  
291 distributed throughout the study area and whose contributions to dissimilarities were likely  
292 due to differences in their distribution (densities and density variability) among stations  
293 within clusters (ESM 3). Thus, *S. grubii* was both a ‘typical’ species and a ‘ubiquitous’  
294 species in the nearshore clusters.

295

## 296 **Discussion**

297 The 1,500-km coast between the Amazon and Orinoco River deltas is a unique system,  
298 comprised of an array of migrating, shifting mudbanks (Anthony et al. 2010). The biological  
299 communities in these mudflats are poorly known. Previous studies dealing with intertidal  
300 macrofaunal communities in Suriname (Swennen et al. 1982) and French Guiana (Clavier  
301 1999) were restricted to a few mudflat sites and limited in taxonomic resolution, focusing  
302 only on major taxa. The present study was thus constrained by the lack of previous taxonomic  
303 work in the region, given the few available studies and the nature of the substrate compared to  
304 the east coast of the Amazon estuary (Kober and Barlein 2006; Braga et al. 2011; Venturini et  
305 al. 2011; Botter-Carvalho et al. 2014). It is thus likely that some individuals sampled belong  
306 to undescribed species (e.g., within the Lumbrineridae). Among the 19 identified species in  
307 the present study, 14 were previously recorded from the Brazilian coast east of the Amazon  
308 Estuary, whereas 13 had been previously observed in the Caribbean Basin. Only one species,  
309 the tanaid *Discapseudes surinamensis*, has never been previously collected outside the study  
310 area (Bacescu and Gutu 1975).

311 The present study allowed identification of two distinct communities whose  
312 differences depend on the level in the intertidal (mean high water vs mean medium and low  
313 water) rather than the distance from the Amazon estuary as originally hypothesized. The  
314 nearshore communities of the three sites fit partially with descriptions already reported by  
315 Clavier (1999) and Swennen et al. (1982), as tanaid species are highly abundant and dominant  
316 taxa. Thus, *Halmyrapseudes spaansi* and *D. surinamensis* reached densities of up to 73,000  
317 ind. m<sup>-2</sup> and 8,000 ind. m<sup>-2</sup>, respectively, in the present study. Both previous studies reported

318 dominance of tanaids at most of the sampling sites, i.e., up to 67,000 ind. m<sup>-2</sup> in the Kaw  
319 Estuary, French Guiana, although the species was not identified (Clavier 1999), and mean  
320 abundances of 16,000 ind. m<sup>-2</sup> for *H. spaansi* and 20,500 ind. m<sup>-2</sup> for *D. surinamensis* in a  
321 coastal lagoon near Krofajapasi, Suriname (Swennen et al. 1982). *Halmyrapseudes spaansi*  
322 and *S. grubii*, which are widely distributed in the studied area, were the main species in  
323 nearshore communities in the present study. *Sigambra grubii* is common along the coast of  
324 Brazil in different soft bottom habitats (Lana et al. 1997; Venturini et al. 2011; Braga et al.  
325 2011; Botter-Carvalho et al. 2014). This ubiquitous species seems enough of a generalist to  
326 exploit the highly unstable mudflats of the coast of Guiana. These two dominant species can  
327 locally make up > 90% of the observed densities (Warappa), although *S. grubii* seems to be  
328 typical of nearshore communities as it was almost completely absent from the offshore  
329 intertidal community at Warappa. This dominance by a very few species and the low  
330 taxonomic richness, explain the low Shannon diversity indices values for the nearshore  
331 macrofaunal communities here reported. Furthermore, each site appeared to have its own  
332 characteristic density ratios between the two dominant species as well as a characteristic  
333 OTU. Indeed, the singularity of the Warappa nearshore community was precisely in the huge  
334 contribution of *H. spaansi* and *S. grubii* to the exclusion of most other OTU, whereas Awala  
335 and Bigi Pan were more diverse and differed in their site-specific OTU. These local  
336 differences cannot be explained by sediment characteristics, as there was no obvious gradient  
337 at mean high water among the sites. Consequently, as reported by Dupuy et al. (2015) for  
338 meiofauna, differences in macrofaunal assemblages are mainly attributed to local conditions,  
339 especially the migration stage of banks, at the scale examined in the present study. The Awala  
340 stations were located at the leading edge of a mudbank, characterized by very fluid mud, and  
341 were close to a mangrove colonization area, whereas stations at Bigi Pan and Warappa were  
342 closer to the trailing edges of two mudbanks characterized by an erosive regime and mature  
343 mangrove trees. A complex interaction of local physical factors could explain the differences  
344 in macrofaunal benthic assemblages among sites, but unfortunately, it was not possible to  
345 measure these characteristics, except for sediment grain size.

346         The mid- and lower tidal level community at Warappa was not described by Swennen  
347 et al. (1982) and Clavier (1999), and thus appears to be unknown prior to this study. This  
348 sparse, but diverse community comprises > 50% of all macrobenthic OTU recorded (22 out of  
349 38), with more than half found to be site-specific (13). *Halmyrapseudes spaansi* was present,  
350 but in low densities, and, *S. grubii* almost absent. A lumbrinerid (cf. *Abyssoninoe* sp.),

351 together with *Alitta* sp. and the gastropod *Cylichnella bidentata* dominate this community.  
352 Sediment granulometric composition may also partially explain the difference in taxonomic  
353 faunal composition between nearshore and offshore stations. Most notably, the offshore  
354 sediments at Warappa had a higher proportion of coarse sand. Another possible explanation  
355 for the differences between the offshore and nearshore stations might be a higher nutrient  
356 supply inshore due to the proximity of sources of estuarine and mangrove leaf decomposition.  
357 The subtidal extent of the offshore community at Warappa is unknown.

358         Low diversity seems to be a major feature of bare intertidal mudflats. Previous studies  
359 on tropical mudflats showed that 10–32% of the species account for 80 or 95% of the  
360 individuals reported (Vargas 1987; Wolff et al. 1993; Dittmann 1995). In the present study, *H.*  
361 *spaansi* constituted 84% of all individuals sampled. Thus, tanaids *H. spaansi*, widely  
362 distributed, *D. surinamensis*, locally very abundant, and probably the tanaid  
363 *Monokalliapseudes guianae* that prefers estuarine conditions (Drumm et al. 2015), clearly  
364 constitute the major component of the macrobenthic communities along the 1,500 km-length  
365 of Guiana's coast. A fourth tanaid species, *Discapseudes holthuisi*, described from Suriname  
366 by Bacescu and Gutu (1975), was not recorded in the present study. Tanaids might occupy the  
367 same ecological niche and importance as the well-studied amphipod *Corophium volutator* in  
368 temperate systems. In bare mudflats of the Bay of Fundy and Europe, *C. volutator* can occur  
369 at densities of 10,000s ind. m<sup>-2</sup> (Hawkins 1985, Murdoch et al. 1986, Peer et al. 1986, Møller  
370 and Riisgård 2006). Like corophids (Meadows and Reid 1966, Peer et al. 1986, Møller and  
371 Riisgård 2006), tanaids live in burrows (Bacescu and Gutu 1975) and are believed to be  
372 surface deposit-feeders that mostly feed on biofilms they collect by scraping the mud surface  
373 with their long appendages.

374         Conversely, some differences between Guiana's mudflats and those in temperate zones  
375 have also been identified. Thus, although 580 species of marine molluscs have been recorded  
376 from the Guianas' coast (Massemin et al. 2009), only 13 species (seven bivalves and six  
377 gastropods) were recorded in the present study. They globally show very low occurrences and  
378 densities and would not contribute significantly to the total biomass of macrofauna, since they  
379 are typically small. Most of the 580 molluscan species are restricted to subtidal and deeper  
380 levels, and few species seem able to live on the very soft and dynamic substrate of tidal  
381 mudflats. Only the gastropods *Assimineia succinea* at Awala and *Cylichnella bidentata* in  
382 offshore Warappa were sufficiently abundant to contribute significantly to the local  
383 community structure. None of them, however, reached abundances comparable to those of the

384 widespread gastropod *Hydrobia ulvae*, considered the most common deposit-feeder in  
385 European intertidal mudflat communities (Newell 1979), where they can reach several  
386 thousands of individuals per m<sup>2</sup> (Dekker 1989; Bocher et al. 2007).

387 Insects are rarely included in studies of marine coastal macrofauna. However, they can  
388 be major components of coastal infaunal communities in low salinity areas such as the Baltic  
389 Sea (Hummel et al. 2016). The long-legged flies (Dolichopodidae) are known to include  
390 marine representatives (Hinton, 1976) and can thus be considered a component of infaunal  
391 communities during larval stages. In the present study, they were recorded at several stations,  
392 sometimes with relatively high densities (up to 700 ind. m<sup>-2</sup>). Adults were also observed at the  
393 surface of the mud at low tide and could be part of the mudflat food web by feeding on the  
394 surface biofilm (Pollet and Brooks 2008).

395 The highfin goby, *Gobionellus oceanicus*, was present in most Awala samples. Like  
396 insect larvae, fishes are not usually included in studies of benthic macrofaunal communities  
397 since they are mobile, and not necessarily well sampled by benthic cores. This estuarine  
398 resident (Andrade-Tubino et al. 2008) is widely distributed from the state of Virginia in the  
399 United States to southern Brazil, and occurs in soft bottoms along coasts and estuaries  
400 (Robins et al. 1999). At low tide, *G. oceanicus* individuals remain in water-filled burrows (U-  
401 shaped in Awala) that they excavate in the mud (Puyo 1949 in Pezold 2004; Lefrançois,  
402 University of La Rochelle, pers. com.). In the present study, this fish species was patchily  
403 distributed at low tide, but sometimes reached densities up to 50 ind. m<sup>-2</sup>. The individuals  
404 collected were < 33 mm in length and were likely juvenile that depend on this habitat during  
405 early, nursery stages (Wyanski and Targett 2000; Gomes and Bonecker 2014; Gomes et al.  
406 2014). Although the species is considered to be a detritivore (Vasconcelos Filho et al. 2003),  
407 there is evidence from field observations and stomach contents that it can also feed on tanaids  
408 (Lefrançois, unpublished results). Thus, densities of the benthic goby could either be related  
409 to the importance of the surface biofilm as a food source or/and to high densities of tanaids as  
410 an abundant food source.

411 The highly dynamic conditions of the intertidal mudflats of the Guianas, related to the  
412 high variability of environmental factors (e.g., high physical forcing, and large variable  
413 freshwater input), should limit settlement success and the adaptive capacities especially of  
414 large-sized species in very soft mobile mud. A previous study on the meiofauna at the same  
415 sites documented a very high abundance of these small organisms, especially nematodes,

416 which was higher than that reported in other areas worldwide (Dupuy et al. 2015). However,  
417 the production of these mudflat ecosystems is expected to be very high and largely subject to  
418 export. Based on the results of the present study, future research should focus on the resilience  
419 capacity, via shifts in functional benthic groups due to adaptation or resistance to local stress  
420 conditions, especially strong physical instability, of all community components of the mudflat  
421 ecosystem.

422

## 423 **Acknowledgments**

424 This study was funded by the University of La Rochelle, the CNRS and the National Fish and  
425 Wildlife Foundation via the New Jersey Audubon Society. The authors thank Sophie Maillé  
426 from GEPOG in French Guiana for technical support, Thierry Guyot (LIENSs laboratory) for  
427 the map, Michel Le Duff (IUEM UBO) for his very valuable help with mollusk taxonomy and  
428 The Microscopic Logistical Department of the Laboratory LIENSs. We are also grateful to  
429 the two anonymous referees for their very valuable comments and suggestions.

430

## 431 **References**

- 432 Allison, M.A., and M.T. Lee. 2004. Sediment exchange between Amazon mudbanks and  
433 shore-fringing mangroves in French Guiana. *Marine Geology* 208: 169–190.
- 434 Allison, M.A., M.T Lee., A.S. Ogston, and R.C. Aller. 2000. Origin of Amazon mudbanks  
435 along the northeastern coast of South America. *Marine Geology* 163: 241–256.
- 436 Andrade-Tubino, M. F., A.L. Ribeiro and M. Vianna. 2008. Organização espaço-temporal das  
437 ictiocenoses demersais nos ecossistemas estuarinos brasileiros: uma síntese. *Oecologia*  
438 *Brasiliensis* 12, 640–661.
- 439 Anthony, E.J., A. Gardel, N. Gratiot, C. Proisy, M.A. Allison, F. Dolique, and F. Fromard.  
440 2010. The Amazon-influenced muddy coast of South America: A review of mud-bank  
441 shoreline interactions. *Earth-Science Reviews* 103: 99–121.
- 442 Augustinus, P.G.E.F. 1978. The changing shoreline of Suriname (South America). Ph.D.  
443 Thesis, University Utrecht. 232 pp.
- 444 Bacescu, M., and M. Gutu. 1975. A new genus (*Discapseudes* ng) and three new species of  
445 Apseudidae (Crustacea, Tanaidacea) from the northeastern coast of South America.  
446 *Zoologische Mededelingen* 49: 95–113.
- 447 Bachelet, G. 1990. The choice of a sieving mesh size in the quantitative assessment of marine  
448 macrobenthos: a necessary compromise between aims and constraints. *Marine*  
449 *Environmental Research* 30: 21–35.

- 450 Baltzer, F., M. Allison, and F. Fromard. 2004. Material exchange between the continental  
451 shelf and mangrove-fringed coasts with special reference to the Amazonian-Guianas  
452 coast. *Marine Geology* 208: 115–126.
- 453 Bocher, P., T. Piersma, A. Dekinga, C. Kraan, M.G. Yates, T. Guyot, E.O. Folmer, and G.  
454 Radenac. 2007. Site- and species-specific distribution patterns of molluscs at five  
455 intertidal soft-sediment areas in northwest Europe during a single winter. *Marine*  
456 *Biology* 151: 577–594.
- 457 Botter-Carvalho, M.L., P.V. Carvalho, A.P.M. Valença, and P.J. Santos. 2014. Estuarine  
458 macrofauna responses to continuous in situ nutrient addition on a tropical mudflat.  
459 *Marine Pollution Bulletin* 83: 214–223.
- 460 Braga, C.F., V.F. Monteiro, J.S. Rosa-Filho, and C.R. Beasley. 2011. Benthic macroinfaunal  
461 assemblages associated with Amazonian saltmarshes. *Wetlands Ecology and*  
462 *Management* 19: 257–272.
- 463 Clarke, K.R., and R.N. Gorley. 2006. *PRIMER version 6: user manual/tutorial*.
- 464 Clavier, J. 1999. Macrobenthos de petite taille dans les vasières et la mangrove de Kaw:  
465 document de travail. Pnoc-guyane - action de recherche mangroves. IRD Bretagne.  
466 11pp.
- 467 Dekker, R. 1989. The macrozoobenthos of the subtidal western Dutch Wadden Sea. I.  
468 Biomass and species richness. *Netherlands Journal of Sea Research* 23: 57–68.
- 469 Dittmann, S. 1995. Benthos structure on tropical tidal flats of Australia. *Helgoländer*  
470 *Meeresuntersuchungen* 49: 539–551.
- 471 Drumm, D.T., J. Jourde, and P. Bocher. 2015. A new species of the genus *Monokalliapseudes*  
472 (Crustacea: Tanaidacea: Kalliapseudidae) from French Guiana. *Proceedings of the*  
473 *Biological Society of Washington* 128: 86-97.
- 474 Dupuy, C., T.H. Nguyen, D. Mizrahi, J. Jourde, M. Bréret, H. Agogué, L. Beaugeard, and P.  
475 Bocher. 2015. Structure and functional characteristics of the meiofauna community in  
476 highly unstable intertidal mudbanks in Suriname and French Guiana (north Atlantic  
477 coast of South America). *Continental Shelf Research* 110: 39-47.
- 478 Eisma, D., P. Augustinus, and C. Alexander. 1991. Recent and subrecent changes in the  
479 dispersal of Amazon mud. *Netherlands Journal of Sea Research* 28: 181–192.
- 480 Gardel, A., and N. Gratiot. 2005. A satellite image-based method for estimating rates of mud  
481 bank migration, French Guiana, South America. *Journal of Coastal Research* 21: 720–  
482 728.
- 483 Gensac, E., A. Gardel, S. Lesourd, and L. Brutier. 2015. Morphodynamic evolution of an  
484 intertidal mudflat under the influence of Amazon sediment supply -Kourou mud bank,  
485 French Guiana, South America. *Estuarine, Coastal and Shelf Science* 158: 53–62.
- 486 Gomes, E.A.P., and A.C. Bonecker. 2014. Structure and dynamics of Gobiidae larvae  
487 (Teleostei, Perciformes) in a tropical estuary: seasonal relationships with tidal cycles.  
488 *Journal of the Marine Biological Association of the United Kingdom* 94: 1557–1568.



- 489 Gomes, E.A.P., P.N. Campos, and A.C. Bonecker. 2014. Occurrence of Gobiidae larvae in a  
490 tropical Brazilian estuary, with particular emphasis on the use of size classes to  
491 categorize species guilds. *Journal of Fish Biology* 84: 996–1013.
- 492 Gratiot, N., A. Gardel, and E.J. Anthony. 2007. Trade-wind waves and mud dynamics on the  
493 French Guiana coast, South America: input from ERA-40 wave data and field  
494 investigations. *Marine Geology* 236: 15–26.
- 495 Gray, J.S., and M. Elliott. 2009. *Ecology of marine sediments: from science to management*.  
496 Oxford University Press.
- 497 Hawkins, C.M. 1985. Population carbon budgets and the importance of the amphipod  
498 *Corophium volutator* in the carbon transfer on a Cumberland Basin mudflat, upper Bay  
499 of Fundy, Canada. *Netherlands Journal of Sea Research* 19: 165–176.
- 500 Hinton, H.E. 1976. Respiratory adaptations of marine insects. In *Marine insects*, ed. L.  
501 Cheng. Amsterdam: North-Holland Publ. Co.
- 502 Hummel, H., P. Van Avesaath, S. Wijnhoven, L. Kleine-Schaars, S. Degraer, F. Kerckhof, N.  
503 Bojanic, S. Skejic, O. Vidjak, M. Rousou, H. Orav-Kotta, J. Kotta, J. Jourde, M.L.  
504 Pedrotti, J.C. Leclerc, N. Simon, F. Rigaut-Jalabert, G. Bachelet, N. Lavesque, C.  
505 Arvanitidis, C. Pavloudi, S. Faulwetter, T. Crowe, J. Coughlan, L. Benedetti-Cecchi, M.  
506 Dal Bello, P. Magni, S. Como, S. Coppa, A. Ikauniece, T. Ruginis, E. Jankowska, J.M.  
507 Weslawski, J. Warzocha, S. Gromisz, B. Witalis, T. Silva, P. Ribeiro, V.K. Fernandes  
508 De Matos, I. Sousa-Pinto, P. Veiga, J. Troncoso, X. Guinda, J.A. Juanes De La Pena, A.  
509 Puente, F. Espinosa, A. Pérez-Ruzafa, M. Frost, C.L. McNeill, O. Peleg, and G. Rilov.  
510 2016. Geographic patterns of biodiversity in European coastal marine benthos. *Journal*  
511 *of the Marine Biological Association of the United Kingdom*. Doi:  
512 10.1017/S0025315416001119.
- 513 Kober, K., and F. Bairlein. 2006. Shorebirds of the Bragantian Peninsula 1. Prey availability  
514 and shorebird consumption at a tropical site in Northern Brazil. *Ornitologia Neotropical*  
515 17: 531-54.
- 516 Kraan, C., T. Piersma, A. Dekinga, A. Koolhaas and J. Van der Meer. 2007. Dredging for  
517 edible cockles (*Cerastoderma edule*) on intertidal flats: short-term consequences of  
518 fisher patch-choice decisions for target and non-target benthic fauna. *ICES Journal of*  
519 *Marine Science: Journal du Conseil* 64: 1735-1742.
- 520 Lana, P.C., E.C. Couto, and M.V. Almeida. 1997. Polychaete distribution and abundance in  
521 intertidal flats of Paranaguá Bay (SE Brazil). *Bulletin of Marine Science* 60: 433–442.
- 522 Lehmann-Ziebarth, N., and A.R. Ives. 2006. The structure and stability of model ecosystems  
523 assembled in a variable environment. *Oikos* 114: 451–464.
- 524 Mare, M.F. 1942. A study of a marine benthic community with special reference to the micro-  
525 organisms. *Journal of the Marine Biological Association of the United Kingdom* 25:  
526 517-54.
- 527 Martinez, J.-M., J.-L. Guyot, N. Filizola, and F. Sondag. 2009. Increase in suspended  
528 sediment discharge of the Amazon River assessed by monitoring network and satellite  
529 data. *Catena* 79: 257–264.

- 530 Massemin, D., D. Lamy, J.-P. Pointier, and O. Gargominy. 2009. *Coquillages et escargots de*  
531 *Guyane. Seashells and snails from French Guiana*. Biotope, Mèze (Collection  
532 Parthénope). Museum National d'Histoire Naturelle, Paris.
- 533 Meadows, P.S., and A. Reid. 1966. The behaviour of *Corophium volutator* (Crustacea:  
534 Amphipoda). *Journal of Zoology*. 150: 387–399.
- 535 Møller, L.F., Riisgård, H.U., 2006. Filter feeding in the burrowing amphipod *Corophium*  
536 *volutator*. *Marine Ecology Progress Series* 322, 213–224.
- 537 Motoda, S. 1959. *Devices of simple plankton apparatus*. Memoire of Fisheries Faculty,  
538 Hokkaido University, Vol.7, pp.73–94.
- 539 Murdoch, M.H., F. Bärlocher and M.L. Laltoo. 1986. Population dynamics and nutrition of  
540 *Corophium volutator* (Pallas) in the Cumberland Basin (Bay of Fundy). *Journal of*  
541 *Experimental Marine Biology and Ecology* 103: 235–249.
- 542 Newell, R. 1979. *Biology of intertidal animals*. Faversham, Kent: Marine Ecological Survey  
543 Ltd.
- 544 Peer, D.L., L.E. Linkletter, and P.W. Hicklin. 1986. Life history and reproductive biology of  
545 *Corophium volutator* (Crustacea: Amphipoda) and the influence of shorebird predation  
546 on population structure in Chignecto Bay, Bay of Fundy, Canada. *Netherlands Journal*  
547 *of Sea Research*. 20: 359–373.
- 548 Pezold, F. 2004. Redescriptions and synonymies of species of the American-West African  
549 genus *Gobionellus* (Teleostei, Gobiidae) with a key to species. *Copeia* 2004: 281–297.
- 550 Pollet, M., and S.E. Brooks. 2008. Long-legged flies (Diptera: Dolichopodidae). In  
551 *Encyclopedia of Entomology*. Vol 2. 2nd ed., ed. J.L. Capinera, 2232–2241. Springer  
552 Netherland.
- 553 Puyo, J. 1949. *Faune de l'Empire Français. XII. Poissons de la Guyane Française*. Office de  
554 la Recherche Outre-Mer. Paris.
- 555 Robins, C.R., G.C. Ray, and J. Douglass. 1999. *A field guide to Atlantic Coast fishes: North*  
556 *America*. The Peterson Field Guide Series Houghton Mifflin Company, Boston, USA.  
557 354 pp.
- 558 Shannon, C.E. and W. Weaver. 1949. *The mathematical theory of communication*. The  
559 University of Illinois Press, Urbana, 117pp.
- 560 Swennen, C., P. Duiven, and A.L. Spaans. 1982. Numerical density and biomass of  
561 macrobenthic animals living in the intertidal zone of Surinam, South America.  
562 *Netherlands Journal of Sea Research* 15: 406–418.
- 563 Vargas, J.A. 1987. The benthic community of an intertidal mud flat in the Gulf of Nicoya,  
564 Costa Rica. Description of the community. *Revista Biologia Tropical* 35: 299–316.
- 565 Vasconcelos Filho, A.L., S. Neumann-Leitão, E. Eskinazi-Leça, R. Schwamborn, A.M.E.  
566 Oliveira, and M.N. Paranaguá. 2003. Trophic interactions between fish and other

- 567 compartment communities in a tropical estuary in Brazil as indicator of environmental  
568 quality. *WIT Transactions on Ecology and the Environment* 63, 173–183.
- 569 Venturini, N., A.M.S. Pires-Vanin, M. Salhi, M. Bessonart, and P. Muniz. 2011. Polychaete  
570 response to fresh food supply at organically enriched coastal sites: Repercussion on  
571 bioturbation potential and trophic structure. *Journal of Marine System* 88: 526–541.
- 572 Wildsmith, M.D., T.H. Rose, I.C. Potter, R.M. Warwick, K.R. Clarke, and F.J. Valesini.  
573 2009. Changes in the benthic macroinvertebrate fauna of a large microtidal estuary  
574 following extreme modifications aimed at reducing eutrophication. *Marine Pollution*  
575 *Bulletin* 58: 1250–1262.
- 576 Wolff, W.J., A.G. Duiven, P. Duiven, N.P. Esselink, P. Gueye, A. Meijboom, A. Moerland,  
577 and G. Zegers. 1993. Biomass of macrobenthic tidal flat fauna of the Banc d’Arguin,  
578 Mauritania. *Hydrobiologia* 258: 151–163.
- 579 Wyanski, D.M., and T.E. Targett. 2000. Development of transformation larvae and juveniles  
580 of *Ctenogobius boleosoma*, *Ctenogobius shufeldti*, and *Gobionellus oceanicus* (Pisces:  
581 Gobiidae) from western North Atlantic estuaries, with notes on early life history.  
582 *Bulletin of Marine Science* 67: 709–728.
- 583
- 584

585

586 **List of Table Captions**

587

588 **Table 1** Location and sedimentary characteristics of the 25 stations sampled in April 2012 in  
589 French Guiana and Suriname.

590 **Table 2** Densities (ind. m<sup>-2</sup>) of each OTU for the 25 stations (coded by letters) sampled in  
591 April 2012 in French Guiana and Suriname. Total number of OTU per station and per site (in  
592 Warappa, values in brackets refer to the number of OTU for transect and nearshore stations,  
593 respectively). Total occurrences (Occ.) (percentage of stations where the OTU were present)  
594 for each OTU over the whole study area are also given.

595 **Table 3** Average percent similarities within clusters and percent OTU contribution to the  
596 average similarities within clusters identified in the study area in April 2012 (A: Awala. B:  
597 Bigi Pan. Wo: Warappa offshore. Wn: Warappa nearshore – SIMPER: OTU contribution  
598 cutoff > 90%). For outliers A2 and W7, individual frequencies within stations are shown  
599 (cutoff > 90% of total abundance within each station). Letters in parenthesis indicate the  
600 faunal group to which the individual OTU belongs (P: polychaetes; T: tanaids; G: gastropods;  
601 F: fishes and I: insects).

602 **Table 4** Ratios of dissimilarity to standard deviation (Diss. /SD) and the percent contributions  
603 of various OTU to dissimilarities (Contrib %) between clusters identified in the study area in  
604 April 2012 (A: Awala. B: Bigi Pan. Wo: Warappa offshore. Wn: Warappa nearshore). Only  
605 OTU detected by SIMPER as good discriminating OTU (Diss/SD > 1.5; Wildsmith et al.  
606 2009) are presented. Highest contributions (> 10%) are in bold face. Letters in parenthesis as  
607 in Table 3.

608

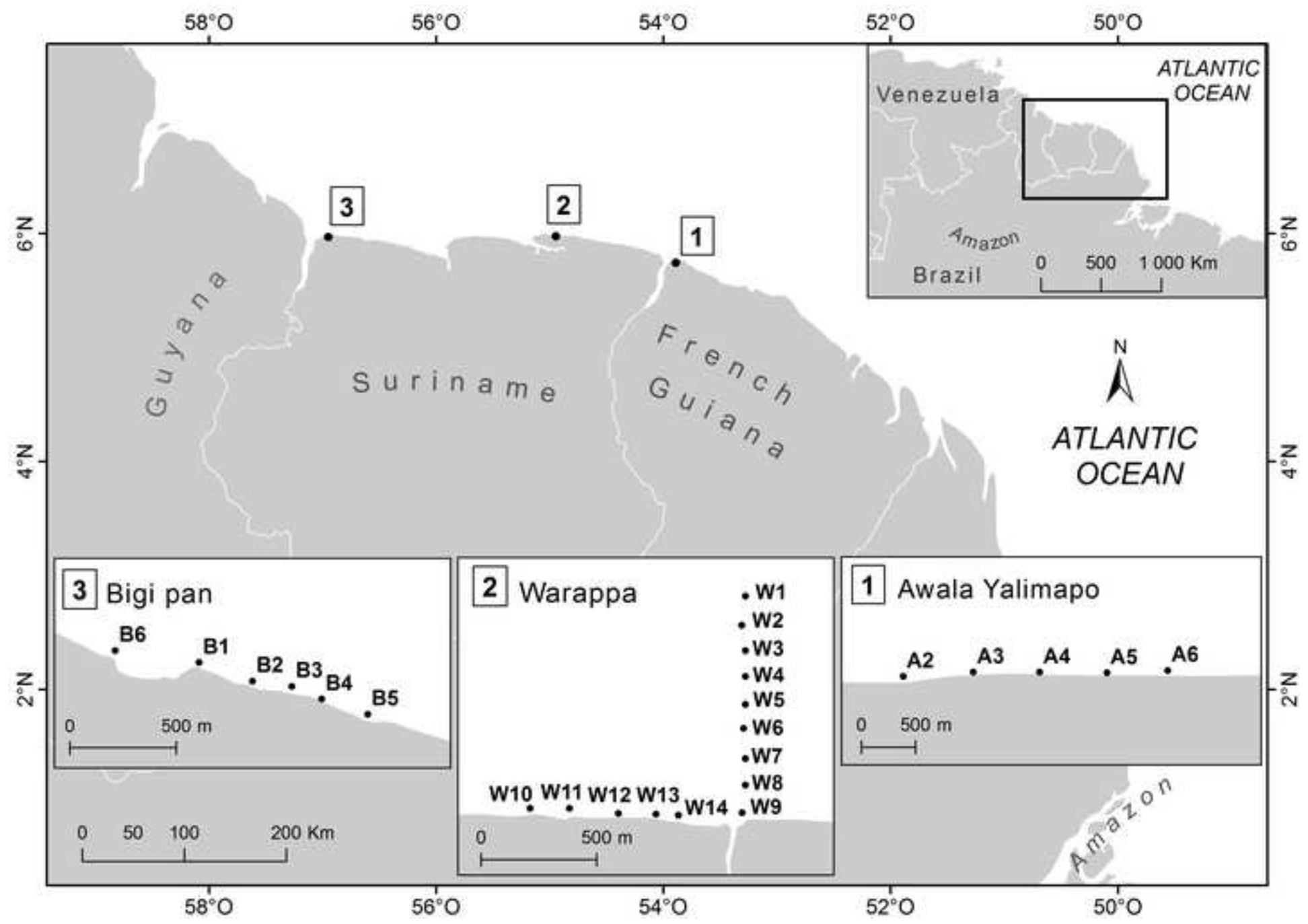
609

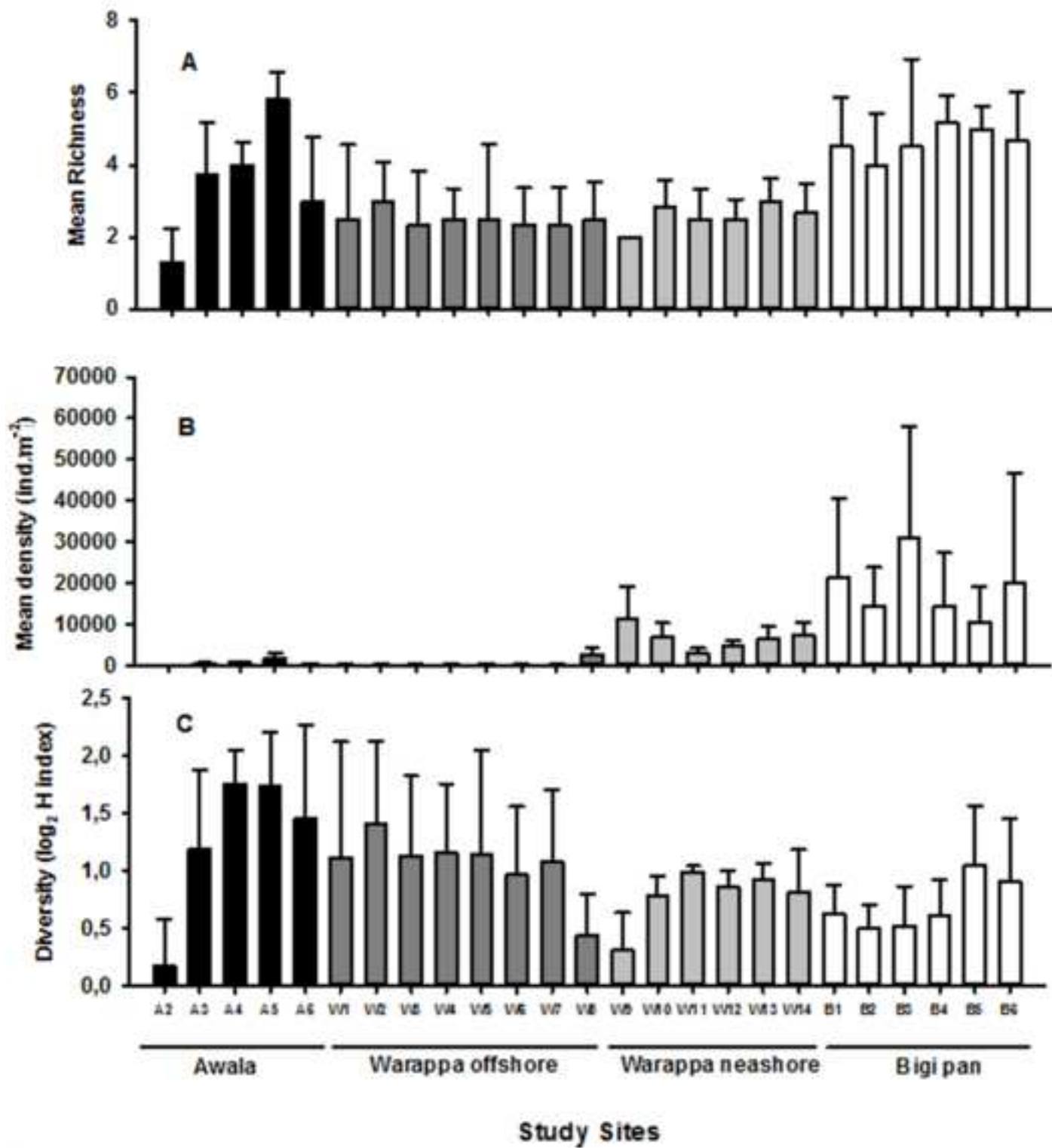
610 **List of figure captions**

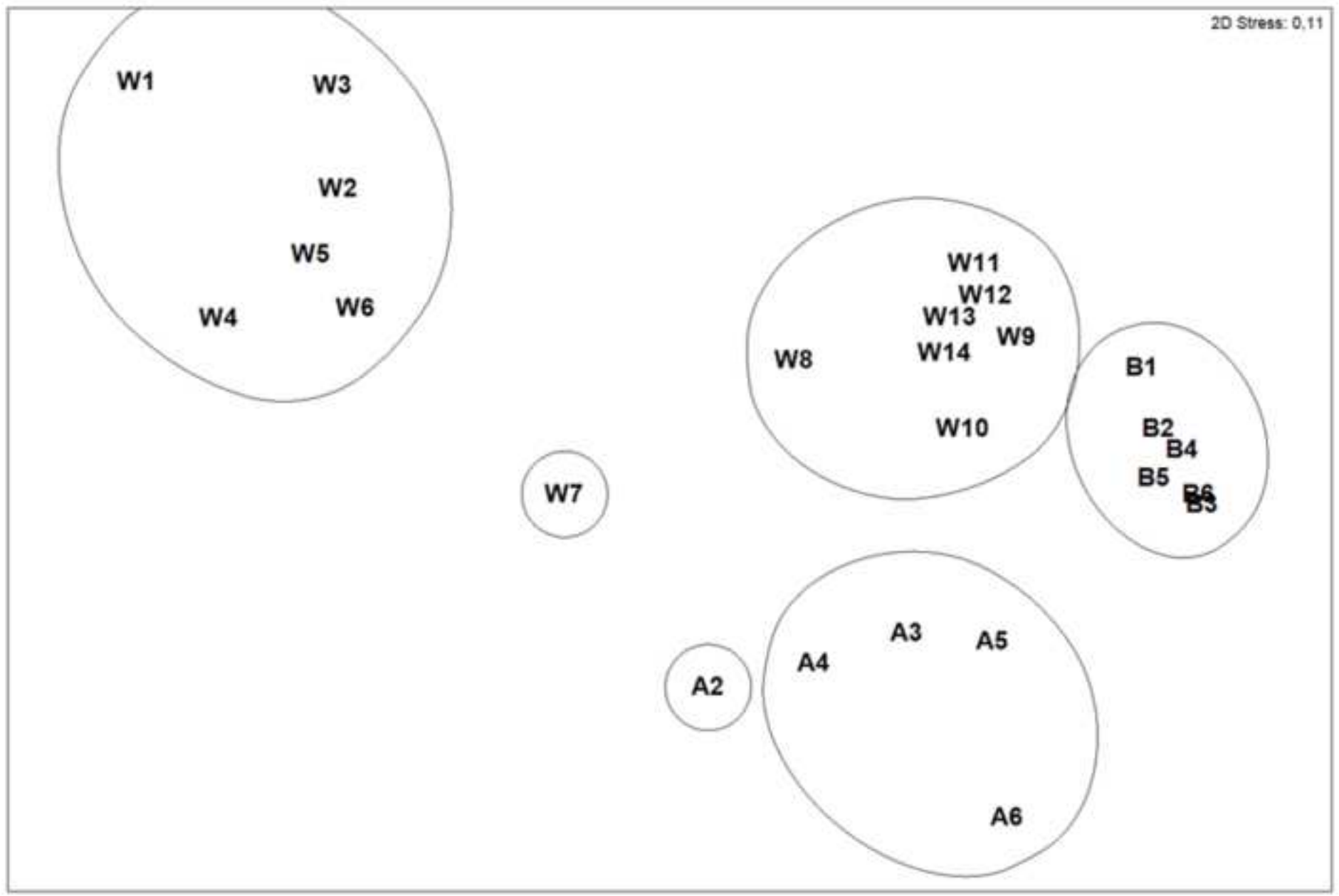
611 **Fig. 1** Map showing the study area and the location of the study sites sampled in French  
612 Guiana and Suriname in April 2012, with locations of sampling stations at each study sites.

613 **Fig. 2** Mean richness (A), mean densities (B) and mean H' diversity (C) measured at the 25  
614 stations sampled in April 2012 in French Guiana and Suriname (A: Awala. B: Bigi Pan. W:  
615 Warappa).

616 **Fig. 3** Non-metric multidimensional scaling (MDS) ordination compiled from fourth root-  
617 transformed OTU densities (ind. m<sup>-2</sup>) based on Bray Curtis similarities of the 25 stations  
618 sampled in April 2012 in French Guiana and Suriname (A: Awala. B: Bigi Pan. W: Warappa);  
619 overlaid clusters (black lines; 50% Bray-Curtis similarity level) correspond to genuine  
620 clusters defined by the SIMPROF routine (5% significance level).









Study site	Station	Station coordinates		Sediment characteristics		
		Latitude	Longitude	Mean grain size $\mu\text{m}$	Sediment < 63 $\mu\text{m}$ %	
<b>Awala-Yalimapo</b>	A2	53°55'26.3"W	5°44'44.1"N	5.9	100	
	A3	53°55'16.5"W	5°44'44.7"N	5.9	100	
	A4	53°55'07.2"W	5°44'44.7"N	5.6	99.9	
	A5	53°54'57.8"W	5°44'44.6"N	5.5	100	
	A6	53°54'49.3"W	5°44'44.9"N	5.3	100	
<b>Warappa</b>	Transect stations	W1	54°54'45.6"W	6°00'36.0"N	19.2	76.5
		W2	54°54'46.7"W	6°00'27.4"N	14.9	80.3
		W3	54°54'45.6"W	6°00'19.8"N	9.5	89.9
		W4	54°54'45.6"W	6°00'12.1"N	16.6	78.3
		W5	54°54'45.6"W	6°00'03.8"N	12.2	86.0
		W6	54°54'46.1"W	5°59'59.6"N	14.1	81.9
		W7	54°54'45.6"W	5°59'47.6"N	6.0	99.5
		W8	54°54'45.6"W	5°59'39.7"N	6.8	97.4
	Nearshore stations	W9	54°54'45.6"W	5°59'31.5"N	6.6	96.5
		W10	54°55'50.1"W	5°59'32.9"N	5.5	99.7
		W11	54°55'28.8"W	5°59'31.2"N	5.3	99.8
		W12	54°55'23.6"W	5°59'31.3"N	5.5	99.8
		W13	54°55'12.4"W	5°59'31.1"N	5.7	98.6
		W14	54°55'05.7"W	5°59'30.8"N	5.7	99.5
<b>Bigi Pan</b>	B1	56°53'28.6"W	5°59'17.7"N	7.9	92.7	
	B2	56°53'20.5"W	5°59'14.9"N	6.5	96.4	
	B3	56°53'14.5"W	5°59'14.1"N	6.4	97.3	
	B4	56°53'10.0"W	5°59'12.2"N	5.9	98.6	
	B5	56°53'03.0"W	5°59'09.9"N	8.6	91.2	
	B6	56°53'41.3"W	5°59'19.5"N	9.5	89.3	

Table

OTU	Awala					Warappa														Bigi Pan						Occ.
	A2	A3	A4	A5	A6	W1	W2	W3	W4	W5	W6	W7	W8	W9	W10	W11	W12	W13	W14	B1	B2	B3	B4	B5	B6	%
<b>Crustacean</b>																										
<i>Halmyrapseudes spaansi</i>	18	206	54	242	18	10	49	59	10	69	69	20	2,255	10,951	5,538	1,846	3,136	4,462	5,296	19,185	13,190	27,957	13,297	7,966	16,846	100
<i>Discapseudes surinamensis</i>		9										10								1,084		2,428	215	1,873	2,688	28
Gnathiidae							20									18	27		9							16
Isopoda											10	10	10													12
Mysidacea			9																9							8
<i>Uca maracoani</i>																				54	9					8
<i>Callinectes bocourti</i>		9																								4
<b>Polychaetes</b>																										
<i>Sigambra grubii</i>	45	152	179	896	63							20	137	275	1,272	1,075	1,622	1,774	1,935	645	780	430	475	269	278	76
Lumbrineridae						10	10	59	108	69	20	10	10													32
<i>Heteromastus</i> sp.													10							45	54	45	116	63	45	28
<i>Mediomastus</i> sp.			27	36			10		10	20	167	29														28
<i>Alitta</i> sp.						20	29	20	10	29	10															24
Orbinidae						20	10	10		10																16
<i>Streblospio gynobranchiata</i>		9	188	18											9											16
<i>Phyllodoce</i> sp.																				36			18			8
Polychaeta							10				10															8
<i>Capitella</i> sp.					9																					4
Capitellidae												39														4
<i>Glycinde multicens</i>								10																		4
<i>Nephtys</i> sp.															9											4
<b>Oligochaetes</b>																										
Oligochaeta							10		39		10	29	10		18			18	9	9						36
<b>Nemertea</b>																										
Nemertea	9			9									10		9							9				20
<b>Molluscs</b>																										
Bivalves																										
<i>Macoma constricta</i>				9	9										9						18		9		9	24
<i>Mulinia cleryana</i>				36	18																	9		18	9	20
<i>Ennucula dalmasi</i>						49	20	10																		12
<i>Nuculana concentrica</i>							20		10																	8
<i>Eurytellina trinitatis</i>						10																				4
<i>Tagelus plebeius</i>																		27								4
Tellinidae																						9				4

<b>Gastropods</b>																										
<i>Assimineea succinea</i>	9	81	341	81																9	27	18	9	27	<b>36</b>	
<i>Cylichnella bidentata</i>					20	29	10	39	39	10										9		36		18	<b>24</b>	
<i>Odostomia solidula</i>			9																					<b>16</b>		
<i>Olivella olssoni</i>					10																			<b>4</b>		
<i>Parvanachis obesa</i>					10																			<b>4</b>		
<i>Turbonilla</i> sp.							10																	<b>4</b>		
<b>Insects</b>																										
Dolichopodidae larvae			54	18							27	242	36	63	143	9								<b>32</b>		
Insecta larvae				45																				<b>4</b>		
<b>Fishes</b>																										
<i>Gobionellus oceanicus</i>	54	27	9	9									27										36	<b>24</b>		
<b>Total number of OTU per station</b>	<b>3</b>	<b>7</b>	<b>7</b>	<b>11</b>	<b>9</b>	<b>9</b>	<b>11</b>	<b>8</b>	<b>7</b>	<b>6</b>	<b>8</b>	<b>9</b>	<b>6</b>	<b>2</b>	<b>7</b>	<b>4</b>	<b>3</b>	<b>5</b>	<b>5</b>	<b>8</b>	<b>8</b>	<b>9</b>	<b>9</b>	<b>7</b>	<b>9</b>	
<b>Total number of OTU per site</b>			<b>16</b>																					<b>14</b>		
																								<b>28 (22; 11)</b>		

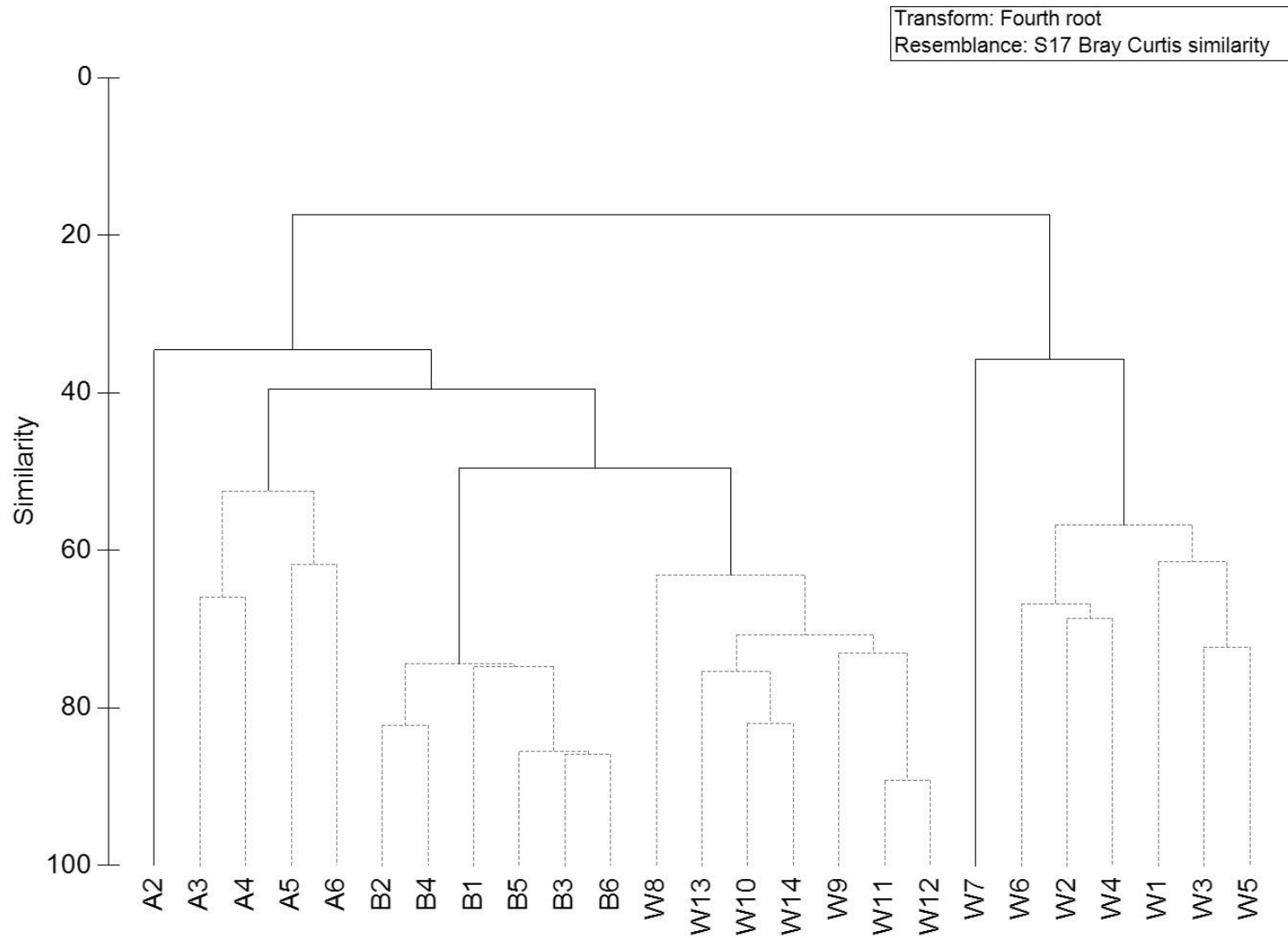
Stations	A	B	Wo	Wn	A2	W7
Average similarity (%)	56.2	77.2	60.5	70.6	-	-
<i>Halmyrapseudes spaansi</i> (T)	21.3	40.7	20.7	56.4	25.0	11.1
<i>Sigambra grubii</i> (P)	26.7	16.8		36.7	62.5	11.1
<i>Assimineia succinea</i> (G)	19.5					
<i>Gobionellus oceanicus</i> (F)	15.4					
<i>Streblospio gynobranchiata</i> (P)	7.5					
<i>Discapseudes surinamensis</i> (T)		13.4				5.6
<i>Heteromastus</i> sp. (P)		10.2				5.6
Dolichopodidae (I)		8.9				
Lumbrineridae (P)			19.9			5.6
<i>Cylichnella bidentata</i> (G)			18.9			
<i>Alitta</i> sp. (P)			18.4			
<i>Mediomastus</i> sp. (P)			7.0			16.7
Orbiniidae (P)			6.6			
Nemertea					12.5	
Capitellidae (P)						22.2
Oligochaeta						16.7

Table

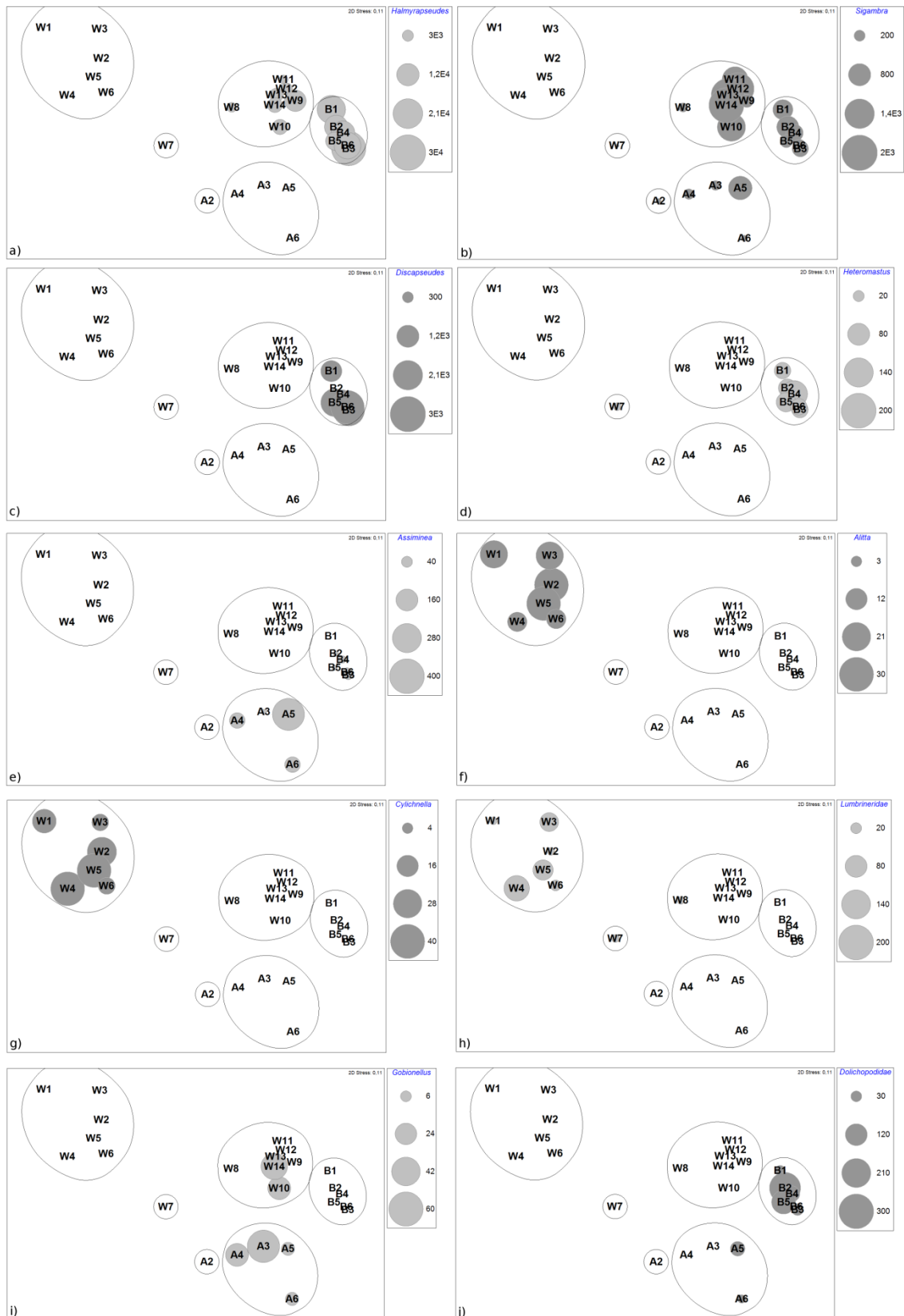
	A/B		A/Wo		A/Wn		B/Wo		B/Wn		Wo/Wn	
Average dissimilarity (%)	60.14		84.68		60.87		89.72		50.52		81.09	
	Diss/SD	Contrib%	Diss/SD	Contrib%	Diss/SD	Contrib%	Diss/SD	Contrib%	Diss/SD	Contrib%	Diss/SD	Contrib%
<i>Halmyrapseudes spaansi</i> (T)	5.6	<b>24.6</b>			2.9	<b>20.8</b>	8.7	<b>19.2</b>	2.1	<b>11.9</b>	3.7	<b>19.6</b>
<i>Sigambra grubii</i> (P)	1.8	3.7	6.3	<b>11.7</b>	1.6	8.1	7.6	<b>10.2</b>	2.1	5.3	4.9	<b>19.1</b>
<i>Discapseudes surinamensis</i> (T)	2.0	<b>14.4</b>					2.0	<b>11.0</b>	2.0	<b>19.2</b>		
<i>Heteromastus</i> sp. (P)	7.0	8.5					8.1	6.1	7.8	<b>10.6</b>		
<i>Assiminea succinea</i> (G)			4.7	9.0	4.6	<b>12.2</b>	2.2	3.7	2.2	6.4		
<i>Alitta</i> sp. (P)			5.9	6.4			8.1	4.6			6.7	7.2
<i>Cylichnella bidentata</i> (G)			4.7	6.7			5.8	4.8			5.0	7.6
Lumbrineridae (P)			3.2	7.6			3.6	5.4			2.3	7.6
<i>Gobionellus oceanicus</i> (F)	3.7	6.5	3.3	6.7	1.7	7.1						
Dolichopodidae (I)							3.1	6.2	3.1	<b>10.8</b>		

**ESM 1:** Sediment granulometric fractions of the 25 stations sampled in French Guiana and Suriname in 2012. Additional data (organic matter (OM), chlorophyll *a* (per dry weight, DW, of sediment) and concentration of prokaryotes in the sediment), and matching stations to those in the present study in Dupuy et al. (2015) are both in bold face.

		<b>Silt &amp; Clay</b>	<b>Fine Sand</b>	<b>Medium Sand</b>	<b>Coarse Sand</b>	<b>OM</b>	<b>Chlorophyll <i>a</i></b>	<b>Prokaryotes</b>	<b>Dupuy et al (2015)</b>
		<b>%</b>	<b>%</b>	<b>%</b>	<b>%</b>	<b>%</b>	<b>µg.g<sup>-1</sup> DW sed</b>	<b>Cells.mL<sup>-1</sup></b>	
<b>Awala</b>	A2	100.0	0.0	0.0	0.0	-	-	-	
	A3	100.0	0.0	0.0	0.0	-	-	-	
	<b>A4</b>	<b>99.9</b>	<b>0.1</b>	<b>0.0</b>	<b>0.0</b>	<b>6.0</b>	<b>18.8</b>	<b>2.5E+09</b>	<b>Awala StB</b>
	<b>A5</b>	<b>100.0</b>	<b>0.0</b>	<b>0.0</b>	<b>0.0</b>	<b>6.0</b>	<b>15.3</b>	<b>2.5E+09</b>	<b>Awala StC</b>
	A6	100.0	0.0	0.0	0.0	-	-	-	
<b>Warappa Kreek</b>	W1	76.5	4.1	0.0	19.3	-	-	-	
	W2	80.3	4.8	0.0	14.8	-	-	-	
	W3	89.8	3.3	0.0	7.0	-	-	-	
	W4	78.3	2.1	0.0	19.6	-	-	-	
	W5	86.0	2.6	0.6	10.8	-	-	-	
	W6	81.9	2.5	0.0	15.7	-	-	-	
	W7	99.5	0.5	0.0	0.0	-	-	-	
	W8	97.4	2.6	0.0	0.0	-	-	-	
	W9	96.5	2.3	1.0	0.2	-	-	-	
	<b>W10</b>	<b>99.7</b>	<b>0.3</b>	<b>0.0</b>	<b>0.0</b>	<b>6.2</b>	<b>8.6</b>	<b>2.8E+09</b>	<b>Warappa</b>
	W11	99.8	0.2	0.0	0.0	-	-	-	
	W12	99.8	0.2	0.0	0.0	-	-	-	
	W13	98.6	1.1	0.3	0.0	-	-	-	
	W14	99.5	0.5	0.0	0.0	-	-	-	
<b>Bigi Pan</b>	B1	92.7	5.9	1.3	0.1	-	-	-	
	B2	96.4	2.6	0.9	0.2	-	-	-	
	B3	97.3	1.8	0.7	0.2	-	-	-	
	B4	98.6	1.4	0.0	0.0	-	-	-	
	<b>B5</b>	<b>91.2</b>	<b>4.2</b>	<b>1.4</b>	<b>3.3</b>	<b>5.6</b>	<b>15.6</b>	<b>4.4E+09</b>	<b>Nickerie</b>
	B6	89.3	3.4	0.6	6.7	-	-	-	



**ESM 2:** Dendrogram of hierarchical clustering compiled from fourth root-transformed densities of OTU based on Bray Curtis similarities of the 25 stations sampled in April 2012 in French Guiana and Suriname. Grey dotted clusters correspond to genuine clusters identified by the SIMPROF routine (A: Awala, B: Bigi Pan, W: Warappa).



**ESM 3:** Bubble plots of densities (ind. m<sup>-2</sup>) of the ten “good discriminating” OTU (see text) generated by the SIMPER routine on the ordination plot of the 25 stations sampled in April 2012 in French Guiana and Suriname (A: Awala. B: Bigi Pan. W: Warappa); OTU are ranked following Table 4; overlaid clusters indicated by black



lines (50% Bray-Curtis similarity level) correspond to genuine clusters defined by the SIMPROF routine (5% significance level).