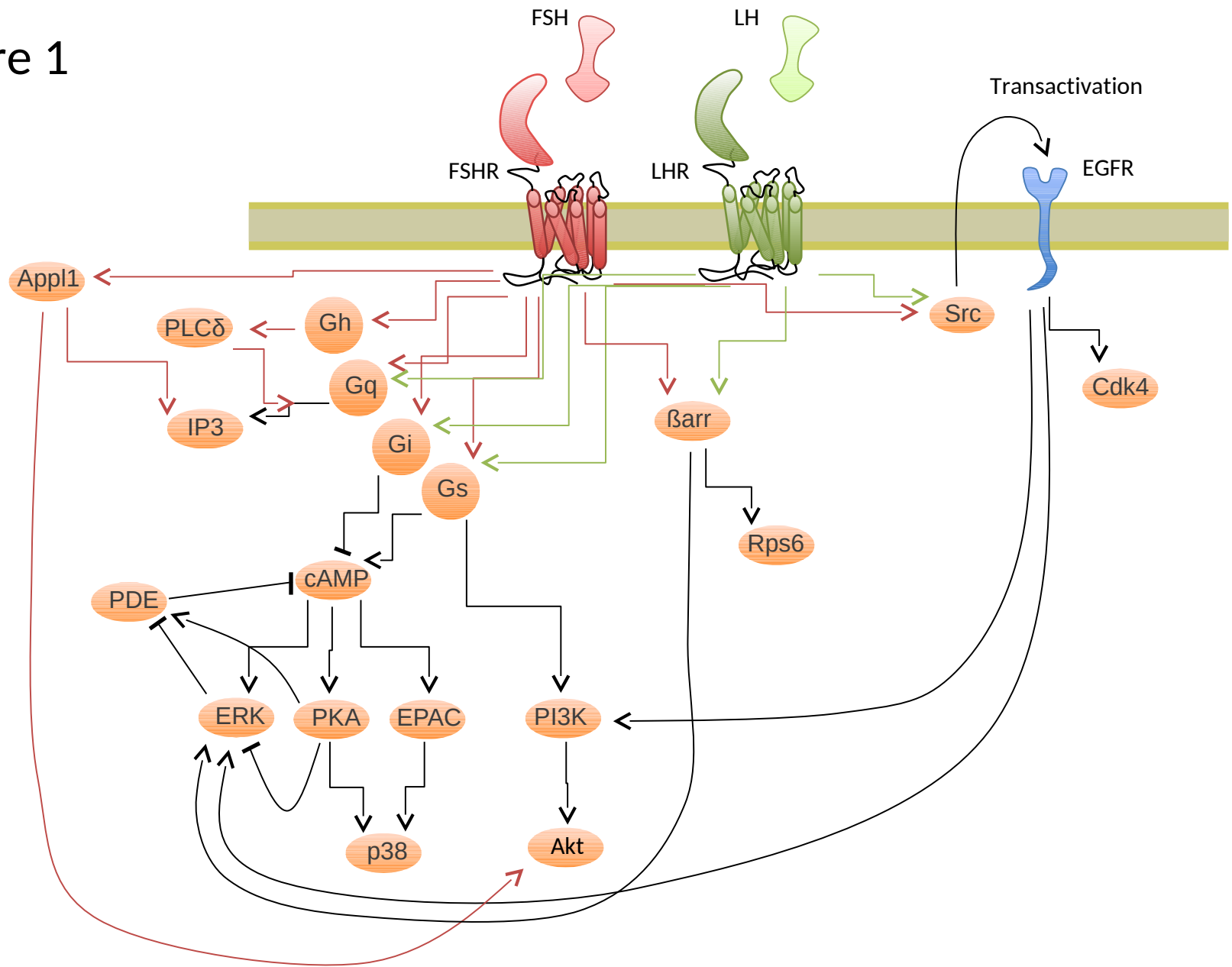
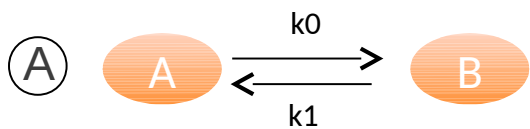


Figure 1





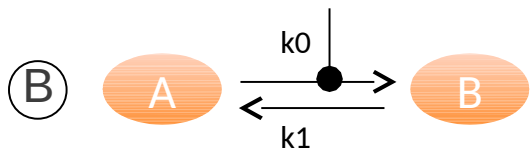
Ordinary differential equation (ODE)

$$\frac{d[B]}{dt} = f([A], [B], k_0, k_1) \quad (1)$$



Mass action law:

$$\frac{d[B]}{dt} = k_0[A] - k_1[B] \quad (2)$$



Mass action law:

$$\frac{d[B]}{dt} = k_0 \cdot [A][C] - k_1[B] \quad (3)$$

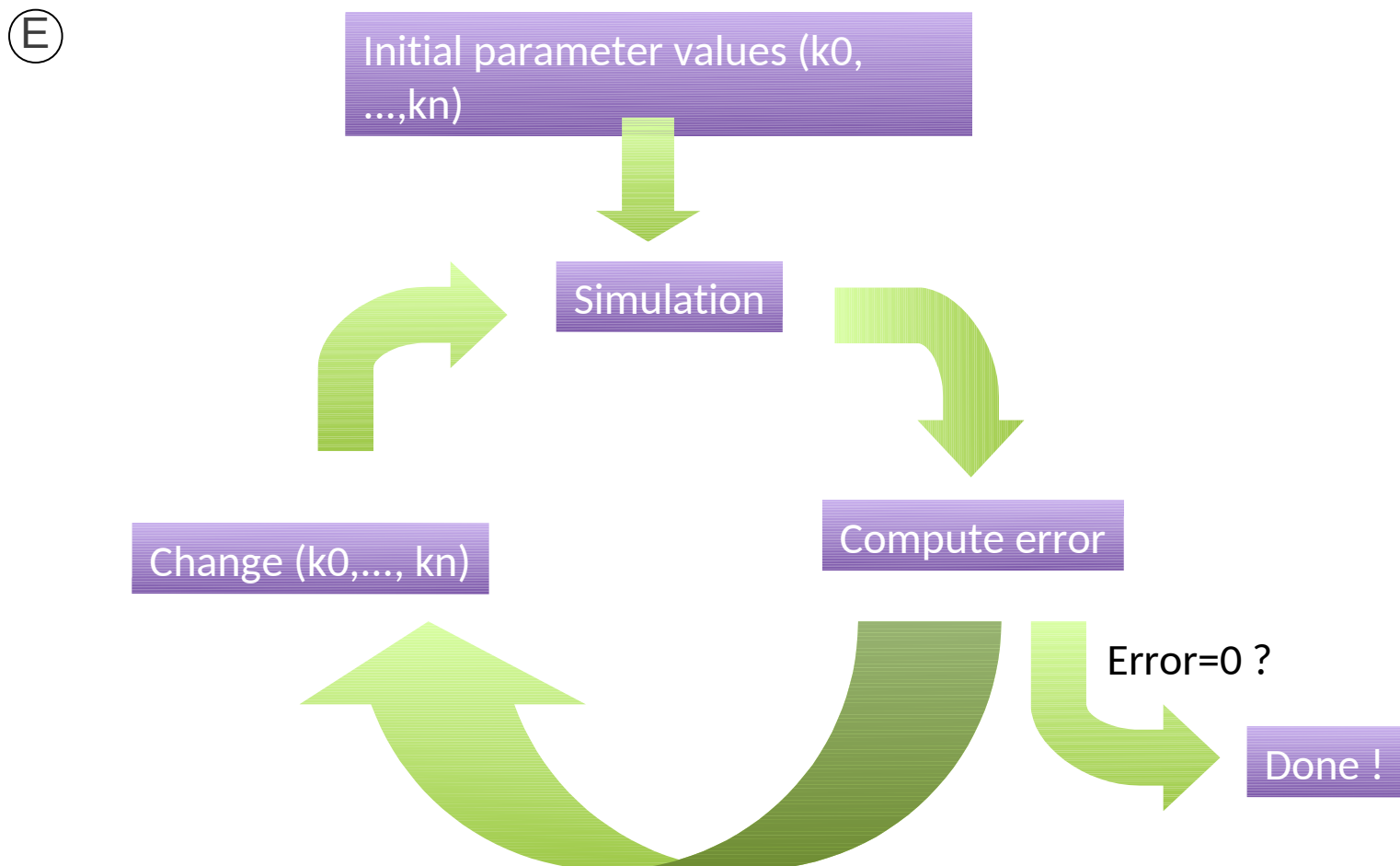
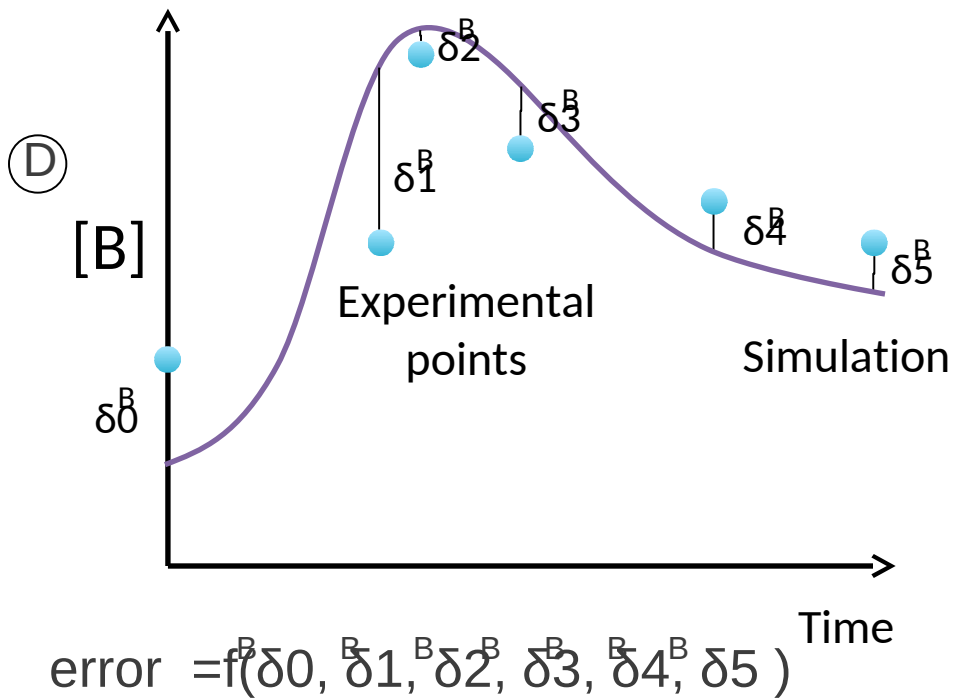
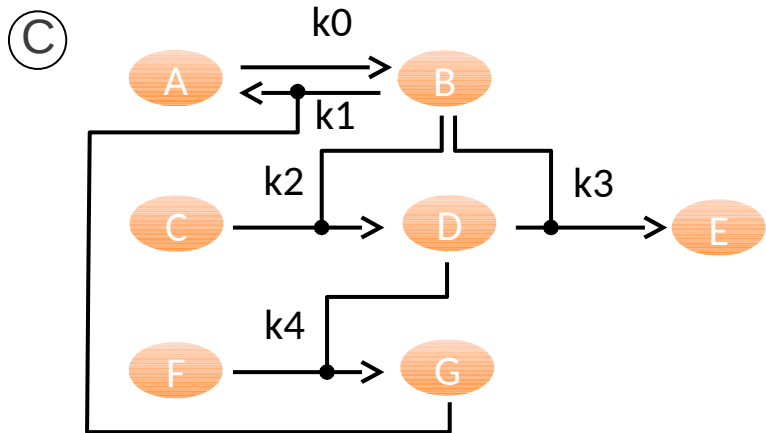
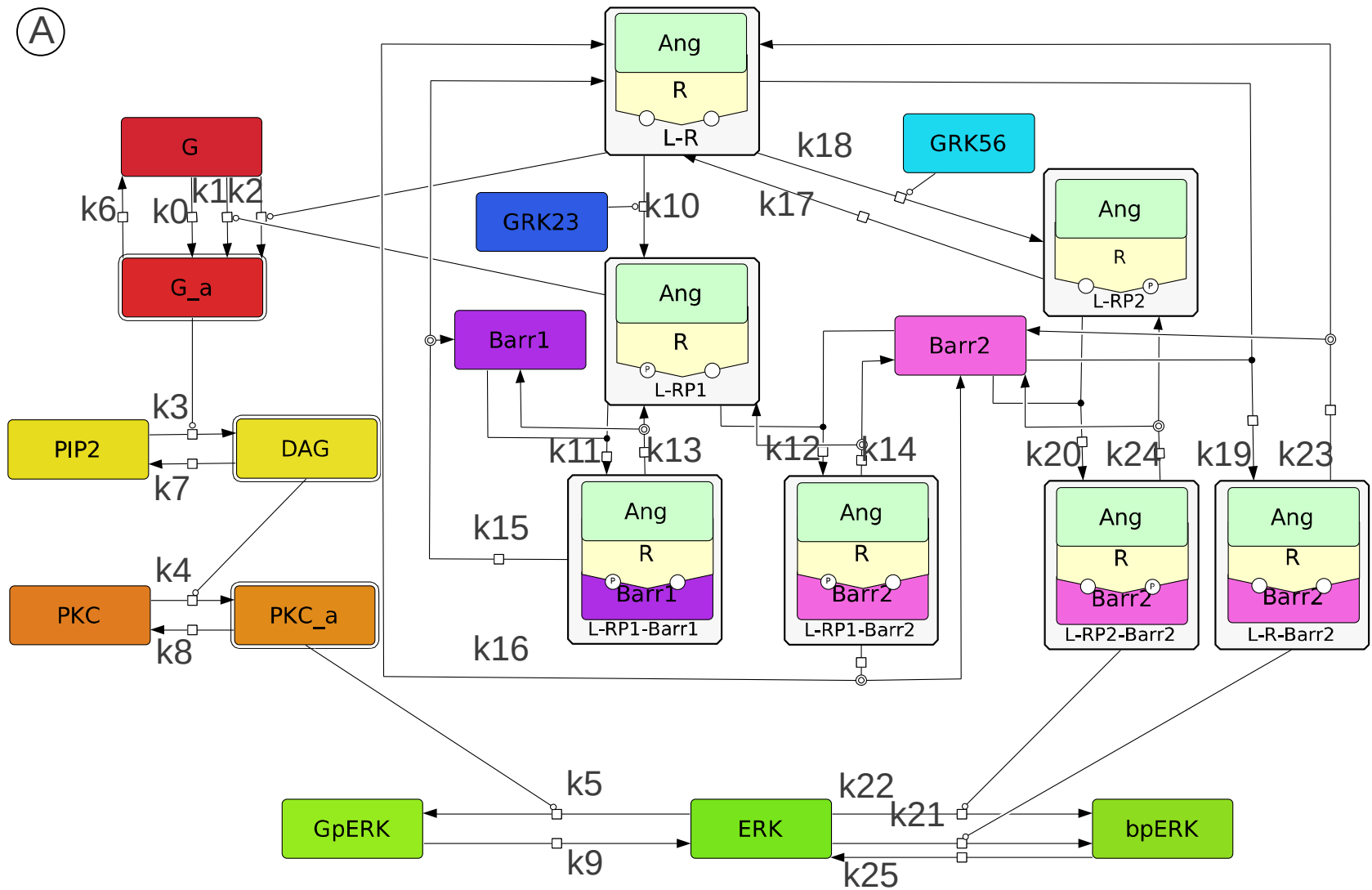


Figure 3

(A)



(B)

Model equations

$$\begin{aligned} \frac{d}{dt}[G_a] &= k_0 \cdot G + k_1 \cdot [LR] + k_2 \cdot [LRP1] - k_6 \cdot [G_a] \\ \frac{d}{dt}[DAG] &= k_3 \cdot [PIP2] - k_7 \cdot [DAG] \\ \frac{d}{dt}[PKC_a] &= k_4 \cdot [PKC] - k_8 \cdot [PKC_a] \\ \frac{d}{dt}[LRP1] &= k_{10} \cdot [GRK23][LR] - k_{11} \cdot [LRP1][Barr1] + k_{13} \cdot [LRP1Barr1] \\ &\quad - k_{12} \cdot [LRP1][Barr2] + k_{14} \cdot [LRP1Barr2] \\ \frac{d}{dt}[LRP1Barr1] &= k_{11} \cdot [LRP1][Barr1] - k_{13} \cdot [LRP1Barr1] - k_{15} \cdot [LRP1Barr1] \\ \frac{d}{dt}[LRP1Barr2] &= k_{12} \cdot [LRP1][Barr2] - k_{14} \cdot [LRP1Barr2] - k_{16} \cdot [LRP1Barr2] \\ \frac{d}{dt}[LRP2] &= k_{18} \cdot [LR] \cdot [GRK56] - k_{17} \cdot [LRP2] - k_{20} \cdot [LRP2][Barr2] + k_{24} \cdot [LRP2Barr2] \\ \frac{d}{dt}[LRP2Barr2] &= k_{20} \cdot [LRP2][Barr2] - k_{24} \cdot [LRP2Barr2] \\ \frac{d}{dt}[LRBarr2] &= k_{19} \cdot [LR][Barr2] - k_{23} \cdot [LRBarr2] \\ \frac{d}{dt}[GpERK] &= k_5 \cdot [ERK] - k_9 \cdot [GpERK] \\ \frac{d}{dt}[bpERK] &= k_{21} \cdot [LRBarr2] + k_{22} \cdot [LRP2Barr2] - k_{25} \cdot [ERK] \end{aligned}$$

Conservation laws

$$\begin{aligned} k_{26} &= [R_T] = [LR] + [LRP1] + [LRP1Barr1] + [LRP2] + [LRP2Barr2] + [LRBarr2] \\ k_{27} &= [G_T] = [G] + [G_a] \\ k_{28} &= [DAG_T] = [DAG] + [PIP2] \\ k_{29} &= [PKC_T] = [PKC] + [PKC_a] \\ k_{30} &= [Barr1_T] = [Barr1] + [LRP1Barr1] \\ k_{31} &= [Barr2_T] = [Barr2] + [LRP1Barr2] + [LRP2Barr2] + [LRBarr2] \\ k_{32} &= [ERK_T] = [ERK] + [GpERK] + [bpERK] \end{aligned}$$

Biological conditions

- Condition 1: control
- Condition 2: PKC inhibition, $k_{29} \rightarrow \star 33$
- Condition 3: siRNA Barr2, $k_{31} \rightarrow \star 34$
- Condition 4: siRNA GRK23, $k_{10} \rightarrow \star 35$
- Condition 5: siRNA GRK56, $k_{18} \rightarrow \star 36$

(C)

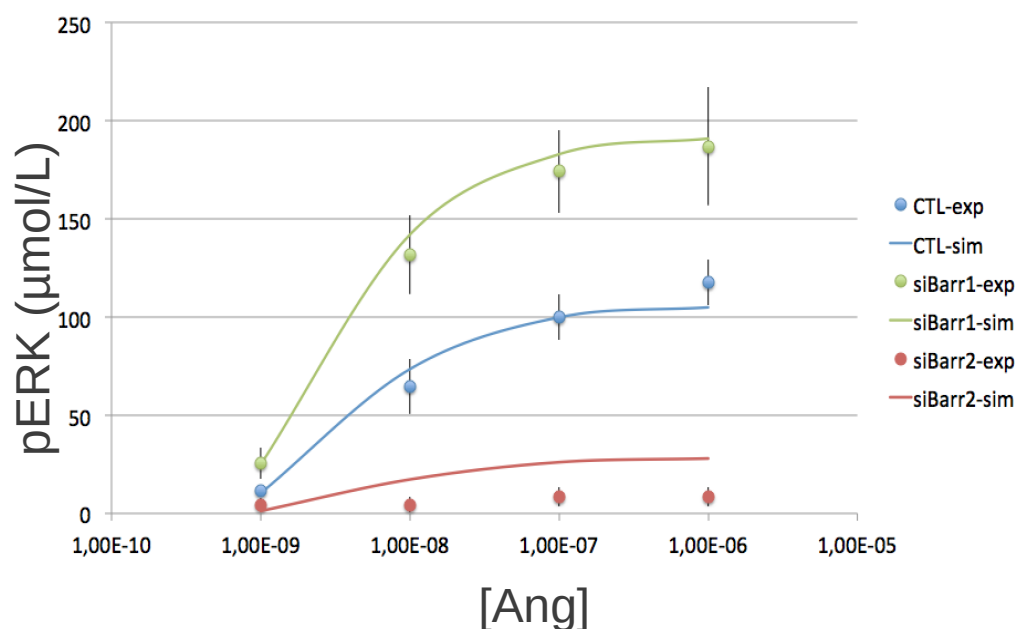


Figure 4

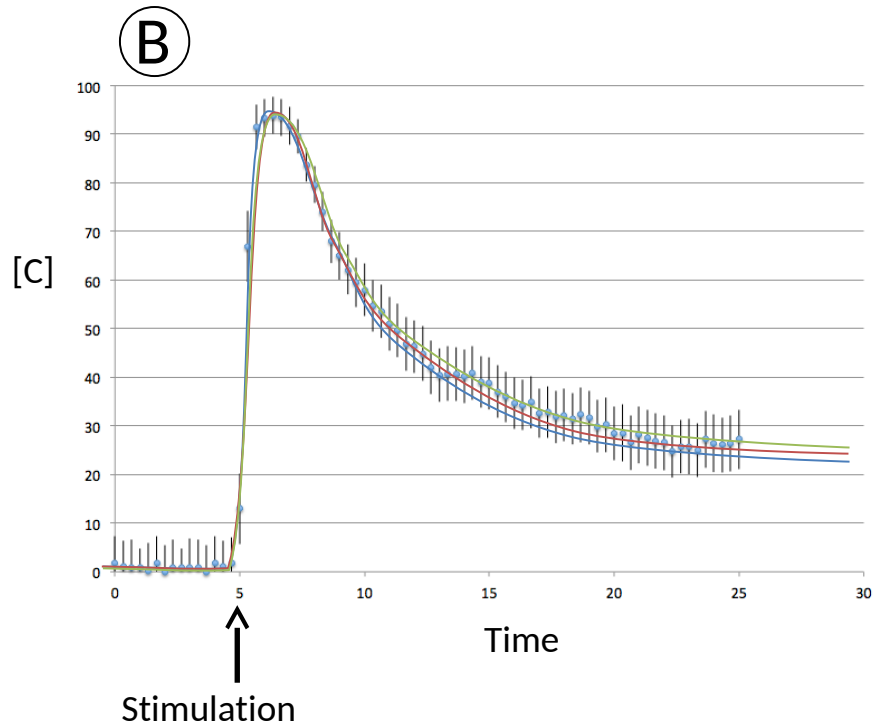
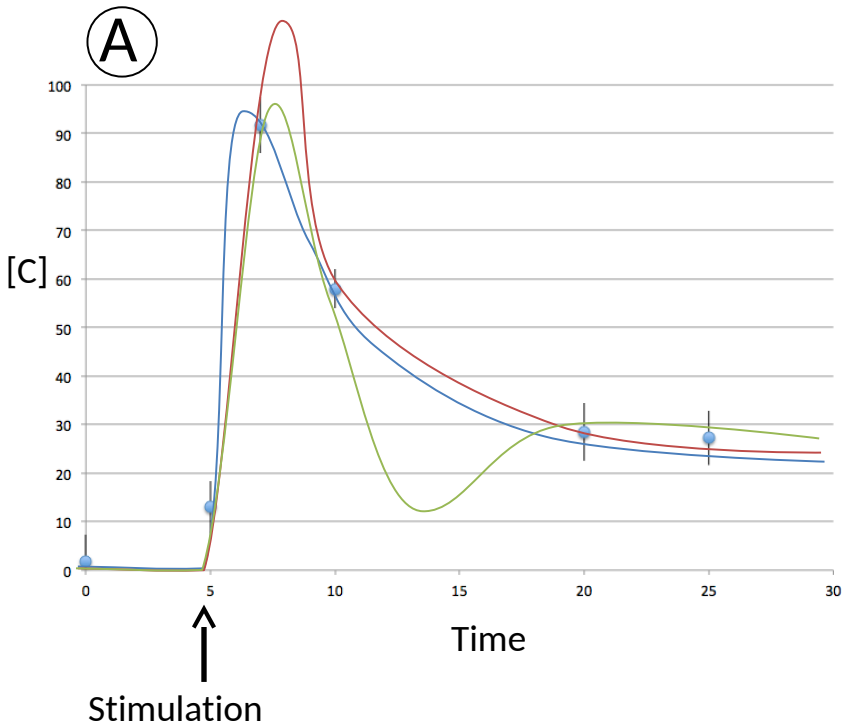


Figure 5

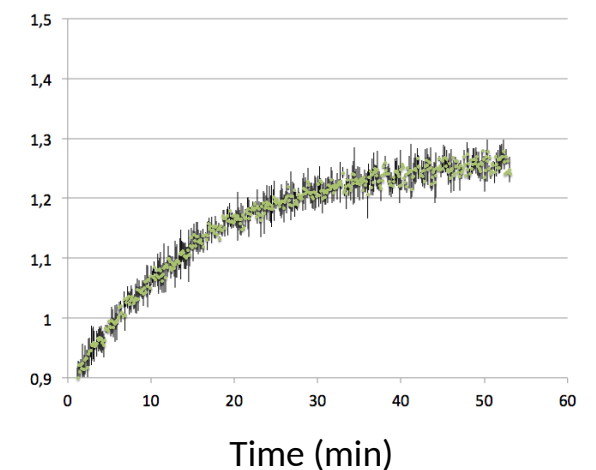
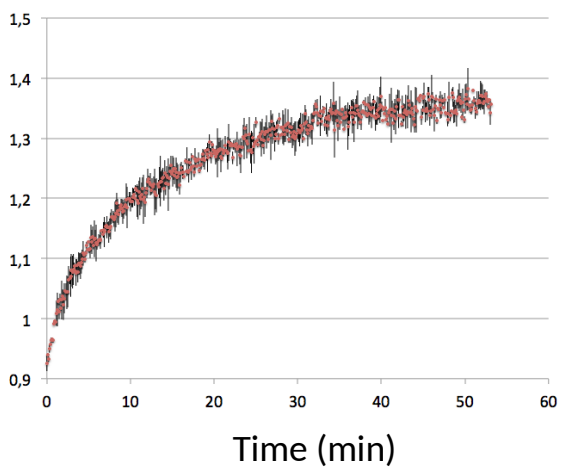
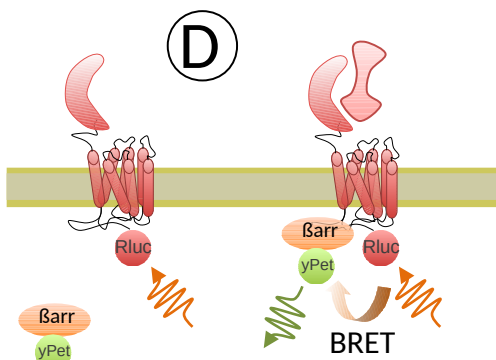
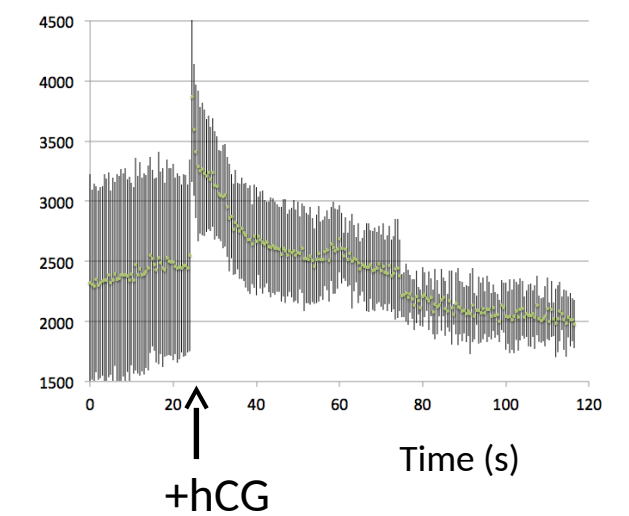
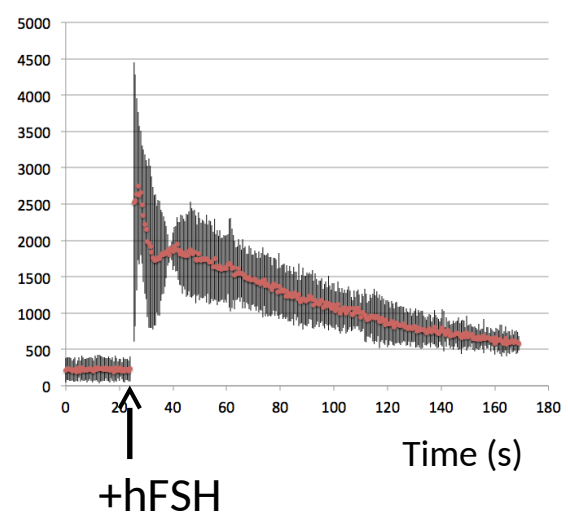
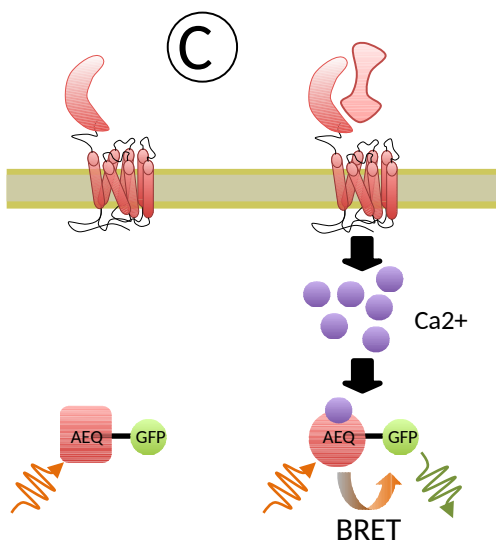
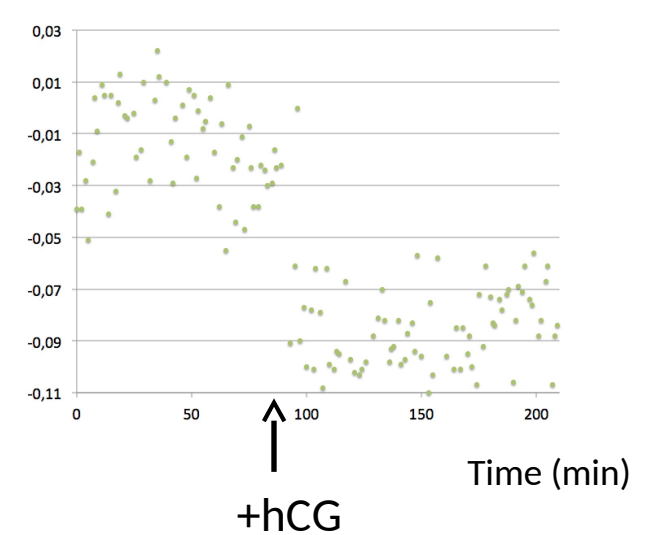
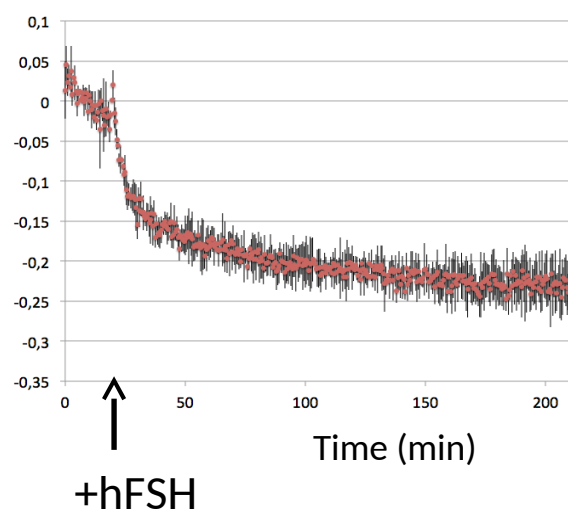
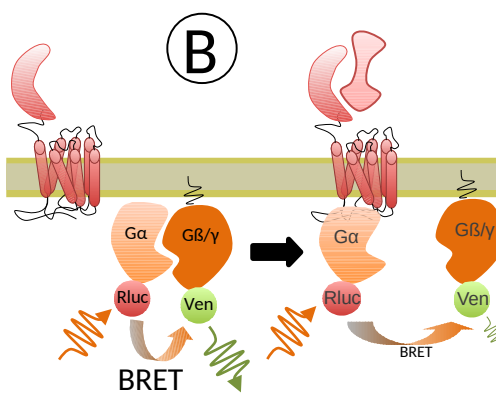
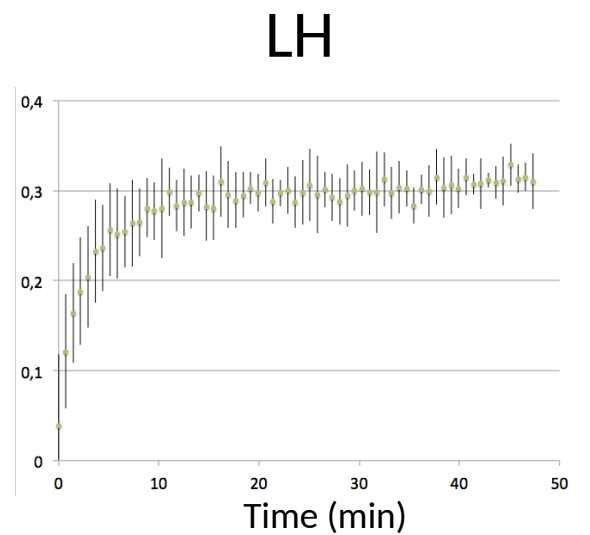
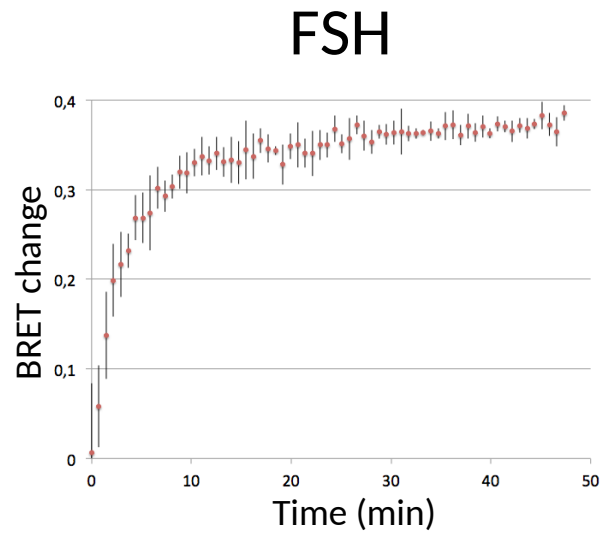
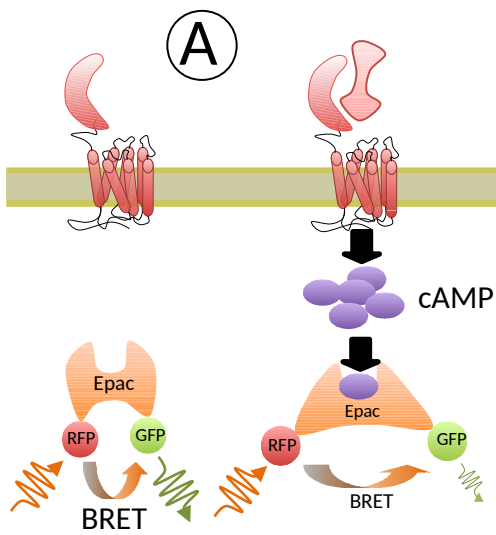


Figure 6

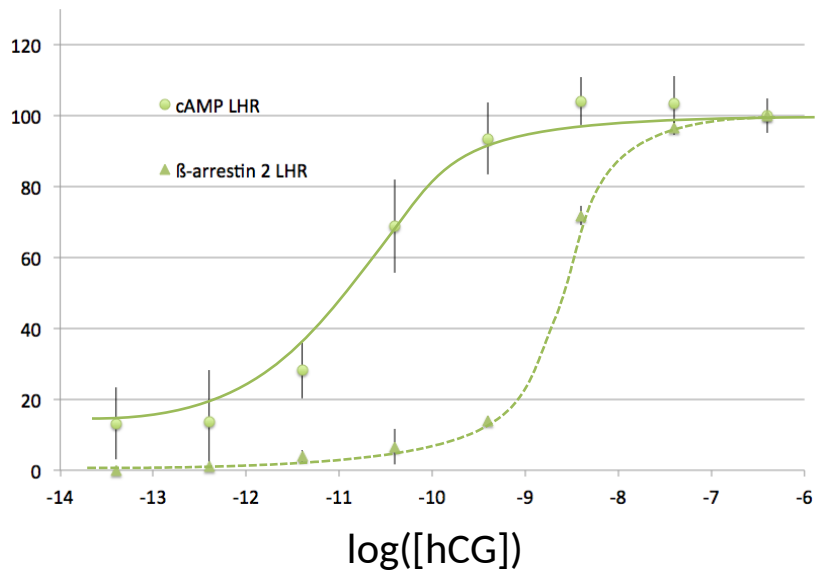
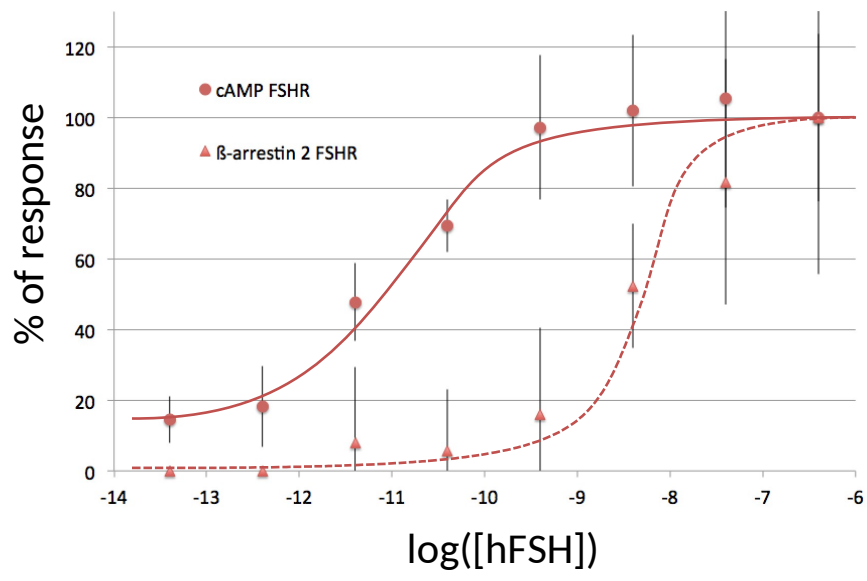


Figure 7

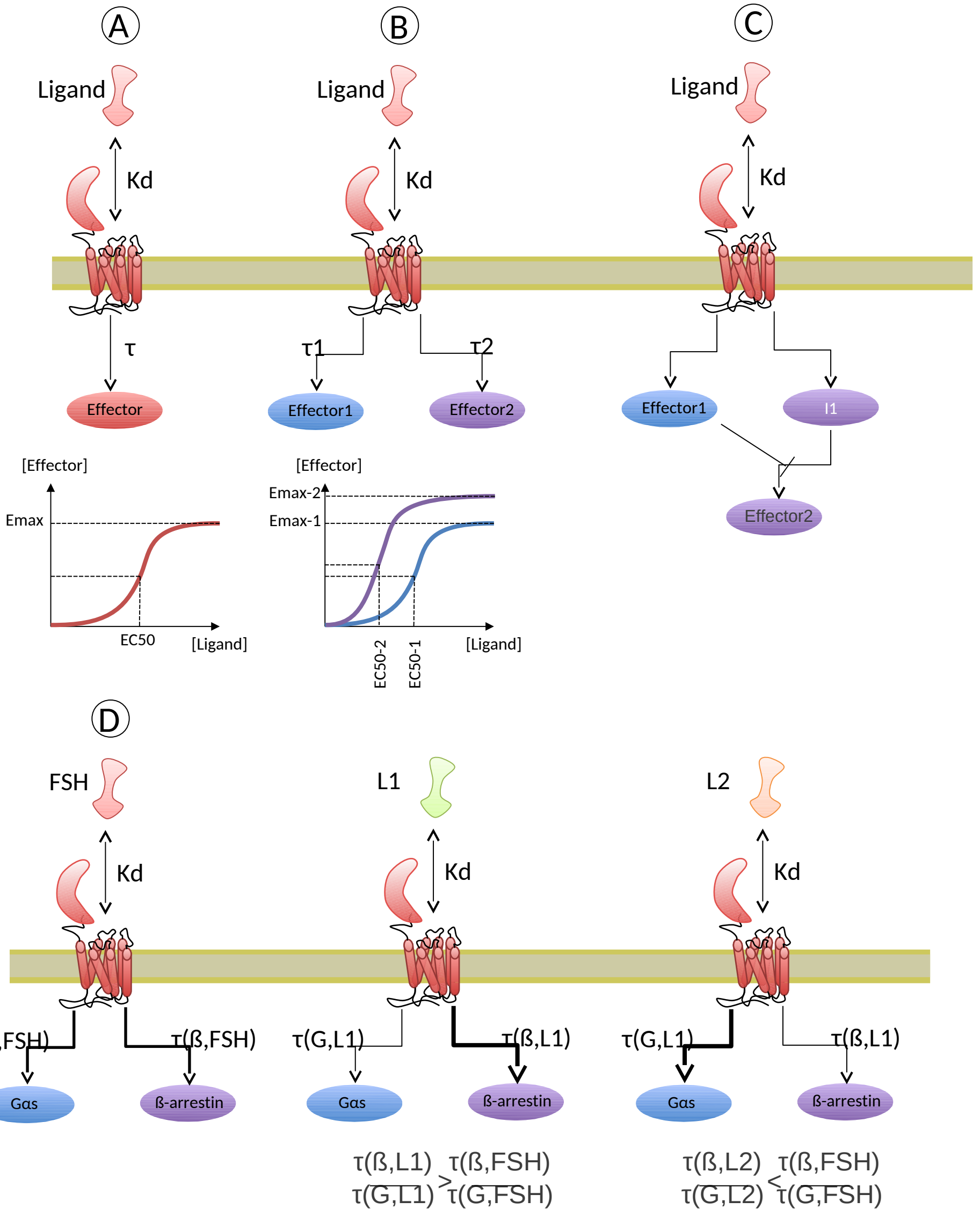


Figure 8

