



HAL
open science

**Mentha spicata var. spicata (L. 1753) and Raphanus sativus var. sativus (L. 1753): meal for Medauroidea extradentata (Brunner von Wattenwyl 1907)
(Phasmatodea: Phasmatidae)**

Gabriel Olive, Gilles Olive

► **To cite this version:**

Gabriel Olive, Gilles Olive. *Mentha spicata* var. *spicata* (L. 1753) and *Raphanus sativus* var. *sativus* (L. 1753): meal for *Medauroidea extradentata* (Brunner von Wattenwyl 1907) (Phasmatodea: Phasmatidae). *Entomology in Belgium*, Dec 2016, Bruxelles, Belgium. pp.39, 2016, Royal Belgian Entomological Society, 6th Symposium, *Entomology in Belgium*. hal-01408357

HAL Id: hal-01408357

<https://hal.science/hal-01408357>

Submitted on 4 Dec 2016

HAL is a multi-disciplinary open access archive for the deposit and dissemination of scientific research documents, whether they are published or not. The documents may come from teaching and research institutions in France or abroad, or from public or private research centers.

L'archive ouverte pluridisciplinaire **HAL**, est destinée au dépôt et à la diffusion de documents scientifiques de niveau recherche, publiés ou non, émanant des établissements d'enseignement et de recherche français ou étrangers, des laboratoires publics ou privés.

***Mentha spicata* var. *spicata* (L. 1753) and *Raphanus sativus* var. *sativus* (L. 1753): meal for *Medauroidea extradentata* (Brunner von Wattenwyl 1907) (Phasmatodea: Phasmatidae)**

Gabriel OLIVE and Gilles OLIVE

^aEcole Industrielle et Commerciale de la Ville de Namur, Laboratoire C²A, Rue Pépin, 2B, 5000 Namur, Belgium, email: gilles.olive@eicvn.be



Introduction

Medauroidea extradentata, a stick insect originally from the district of Annam, Vietnam. Although its natural food plant in Vietnam is unknown, this species is able to feed on a large variety of plants in captivity such as brambles and raspberries (*Rubus* spp. (L. 1753)), hazel (*Corylus maxima* (Mill. 1768)) for the most common. When current food shortages (bramble, raspberry and hazel), it has been demonstrated that some specimens of the species *M. extradentata* are able to survive on other food resources (1). *Mentha spicata* var. *spicata* does not seem to pose adaptation problem, but survival on *Raphanus sativus* var. *sativus* is obviously accessible to a limited number of specimens (3 out of 11 in the cited experiment). This was the first time that it was observed that *M. extradentata* is able to feed on spearmint and radish. New experiments, over a longer period in order to study if specimens living on one of the cited plants have the capacity to perform a complete cycle, if their eggs are viable, are described here.



Experimental and Results

Mentha spicata var. *spicata*

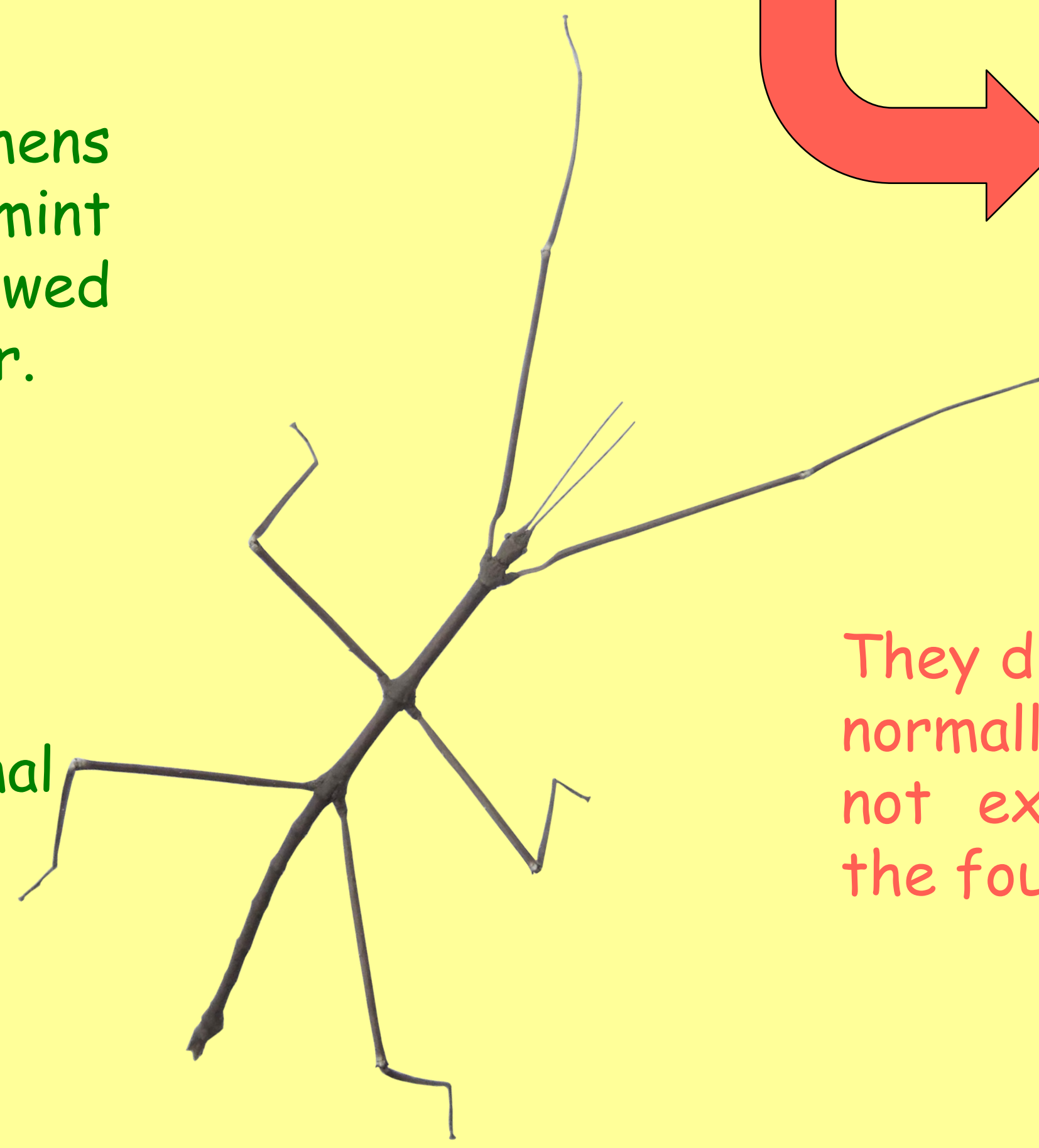
Raphanus sativus var. *sativus*



Two specimens living on spearmint were followed during one year.



Two specimens living on radish plants were followed during ten months.



The two had a normal development.

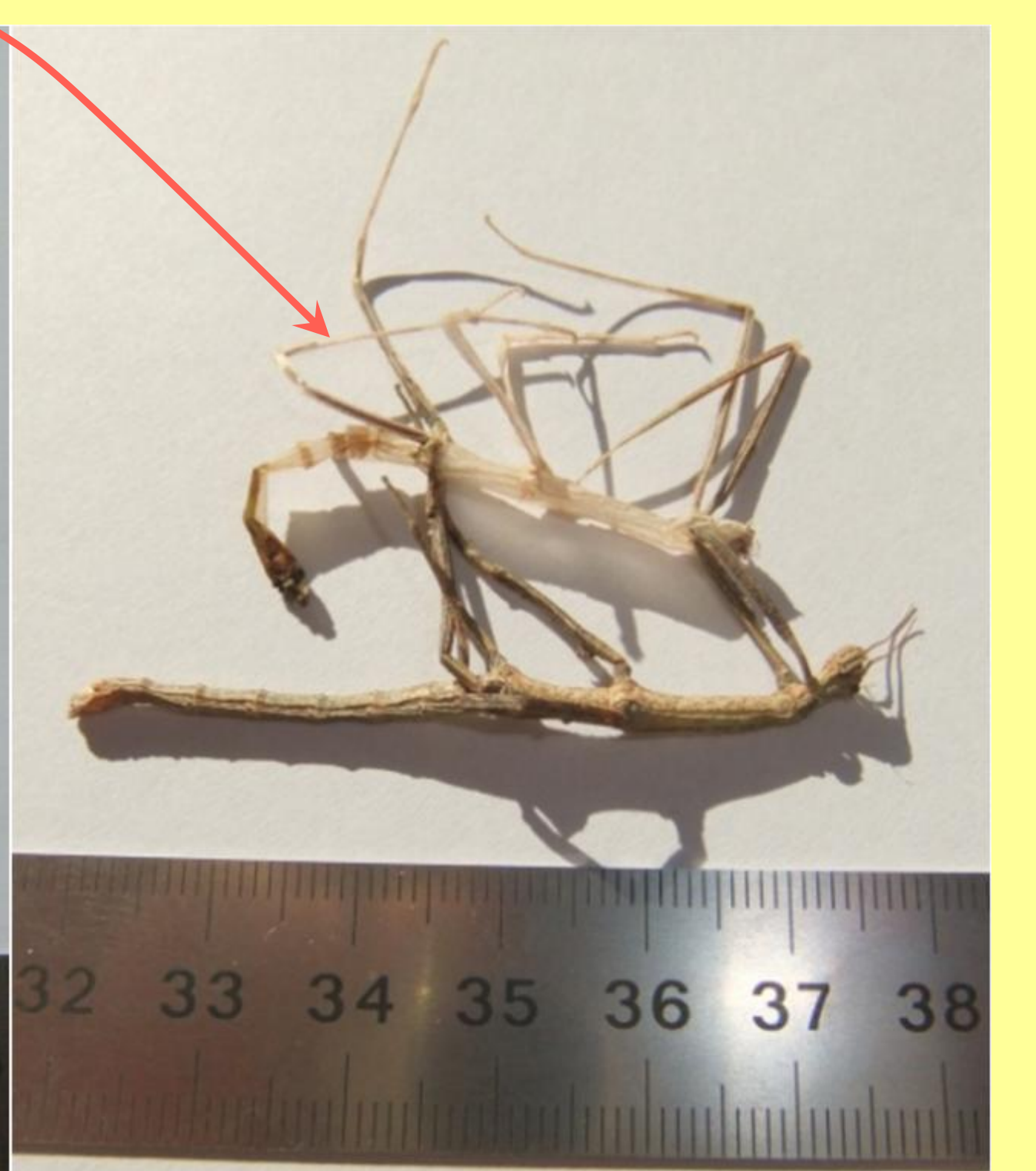
They did not develop normally, as they did not exceed in size the fourth instar.



The one who lived on the radish is 8 months old, and it is much smaller than another who was fed classically and who was only 7 months old. And the second specimen has molted for nothing, as it has not grown and this moult has been fatal to it.



They are adult with their offspring at different instars.



Conclusion

The selection of food for this species has been slightly expanded. Indeed, only *M. spicata* can be used as food for *M. extradentata*, as *R. sativus* allows only the survival of the specimens but not of the *M. extradentata* species.

(1) Olive Gabriel, Zimmer Jean-Yves, Olive Gilles (2016). *Mentha spicata* var. *spicata* (L. 1753) and *Raphanus sativus* var. *sativus* (L. 1753) : survival meal for *Medauroidea extradentata* (Brunner von Wattenwyl 1907) (Phasmatodea: Phasmatidae). *Communications in Agricultural and Applied Biological Sciences* 81 (1), p. 190-193.