



Standing on the shoulders of Dwarfs: the *Kepler* asteroseismic LEGACY sample I - oscillation mode parameters

Mikkel N. Lund, Victor Silva Aguirre, Guy R. Davies, William J. Chaplin, Jørgen Christensen-Dalsgaard, Günter Houdek, Timothy R. White, Timothy R. Bedding, Warrick H. Ball, Daniel Huber, et al.

► To cite this version:

Mikkel N. Lund, Victor Silva Aguirre, Guy R. Davies, William J. Chaplin, Jørgen Christensen-Dalsgaard, et al.. Standing on the shoulders of Dwarfs: the *Kepler* asteroseismic LEGACY sample I - oscillation mode parameters. The Astrophysical Journal, 2017, 835 (2), pp.172. 10.3847/1538-4357/835/2/172 . hal-01407387

HAL Id: hal-01407387

<https://hal.science/hal-01407387>

Submitted on 15 Oct 2020

HAL is a multi-disciplinary open access archive for the deposit and dissemination of scientific research documents, whether they are published or not. The documents may come from teaching and research institutions in France or abroad, or from public or private research centers.

L'archive ouverte pluridisciplinaire **HAL**, est destinée au dépôt et à la diffusion de documents scientifiques de niveau recherche, publiés ou non, émanant des établissements d'enseignement et de recherche français ou étrangers, des laboratoires publics ou privés.

STANDING ON THE SHOULDERS OF DWARFS: THE *KEPLER* ASTEROSEISMIC LEGACY SAMPLE I — OSCILLATION MODE PARAMETERS

MIKKEL N. LUND^{1,2*}, VÍCTOR SILVA AGUIRRE², GUY R. DAVIES^{1,2}, WILLIAM J. CHAPLIN^{1,2},
 JØRGEN CHRISTENSEN-DALSGAARD², GÜNTER HOUDEK², TIMOTHY R. WHITE², TIMOTHY R. BEDDING^{3,2},
 WARRICK H. BALL^{4,5}, DANIEL HUBER^{3,6,2}, H. M. ANTIA⁷, YVELINE LEBRETON^{8,9}, DAVID W. LATHAM¹⁰, RASMUS HANDBERG²,
 KULDEEP VERMA^{7,2}, SARBANI BASU¹¹, LUCA CASAGRANDE¹², ANDERS B. JUSTESEN², HANS KJELDSSEN², AND
 JAKOB R. MOSUMGAARD²

¹School of Physics and Astronomy, University of Birmingham, Edgbaston, Birmingham, B15 2TT, UK; *lundm@bison.ph.bham.ac.uk

²Stellar Astrophysics Centre, Department of Physics and Astronomy, Aarhus University, Ny Munkegade 120, DK-8000 Aarhus C, Denmark

³Sydney Institute for Astronomy (SIFA), School of Physics, University of Sydney, NSW 2006, Australia

⁴Institut für Astrophysik, Georg-August-Universität Göttingen, Friedrich-Hund-Platz 1, 37077, Göttingen, Germany

⁵Max-Planck-Institut für Sonnensystemforschung, Justus-von-Liebig-Weg 3, 37077, Göttingen, Germany

⁶SETI Institute, 189 Bernardo Avenue, Mountain View, CA 94043, USA

⁷Tata Institute of Fundamental Research, Homi Bhabha Road, Mumbai 400005, India

⁸Observatoire de Paris, GEPI, CNRS UMR 8111, F-92195 Meudon, France

⁹Institut de Physique de Rennes, Université de Rennes 1, CNRS UMR 6251, F-35042 Rennes, France

¹⁰Harvard-Smithsonian Center for Astrophysics, 60 Garden Street Cambridge, MA 02138 USA

¹¹Department of Astronomy, Yale University, PO Box 208101, New Haven, CT 06520-8101, USA

¹²Research School of Astronomy and Astrophysics, Mount Stromlo Observatory, The Australian National University, ACT 2611, Australia

Draft version December 2, 2016

Abstract

The advent of space-based missions like *Kepler* has revolutionized the study of solar-type stars, particularly through the measurement and modeling of their resonant modes of oscillation. Here we analyze a sample of 66 *Kepler* main-sequence stars showing solar-like oscillations as part of the *Kepler* seismic LEGACY project. We use *Kepler* short-cadence data, of which each star has at least 12 months, to create frequency power spectra optimized for asteroseismology. For each star we identify its modes of oscillation and extract parameters such as frequency, amplitude, and line width using a Bayesian Markov chain Monte Carlo ‘peak-bagging’ approach. We report the extracted mode parameters for all 66 stars, as well as derived quantities such as frequency difference ratios, the large and small separations $\Delta\nu$ and $\delta\nu_{02}$; the behavior of line widths with frequency and line widths at ν_{\max} with T_{eff} , for which we derive parametrizations; and behavior of mode visibilities. These average properties can be applied in future peak-bagging exercises to better constrain the parameters of the stellar oscillation spectra. The frequencies and frequency ratios can tightly constrain the fundamental parameters of these solar-type stars, and mode line widths and amplitudes can test models of mode damping and excitation.

Keywords: Asteroseismology – stars: evolution – stars: oscillations – stars: fundamental parameters

1. INTRODUCTION

The study of stars and extrasolar planets via the properties of their host stars has experienced a revolution in recent years (Chaplin & Miglio 2013; Christensen-Dalsgaard 2016). This largely arose from the successful application of asteroseismology using observations from the CoRoT (Baglin et al. 2009) and *Kepler* missions (Gilliland et al. 2010). This application has been made possible by extracting high-precision parameters from the stellar frequency-power spectra owing to the long time-baseline and photometric quality of these space missions.

Asteroseismology allows the determination of fundamental stellar parameters such as mass, radius, and age through modeling of individual mode frequencies or frequency-difference ratios. The *Kepler* mission has already provided stellar parameters for a number of stars, including planetary hosts, using average seismic parameters (Chaplin et al. 2011a, 2014; Silva Aguirre

et al. 2012; Huber et al. 2013), individual frequencies (Christensen-Dalsgaard et al. 2010; Basu et al. 2010; Howell et al. 2012; Metcalfe et al. 2012, 2014, 2015; Van Eylen et al. 2014; Lund et al. 2014c; Campante et al. 2015; Silva Aguirre et al. 2015), and frequency-difference ratios (Silva Aguirre et al. 2013, 2015; Lebreton & Goupil 2014).

The high precision of extracted mode frequencies further allows the study of ionization zones and the convective envelope boundary from acoustic glitches (Houdek & Gough 2007; Silva Aguirre et al. 2011; Mazumdar et al. 2014; Verma et al. 2014), and one may also learn about the physics of the excitation and damping of the oscillation modes from measured mode line widths, amplitudes, and visibilities (Houdek et al. 1999; Houdek 2006; Samadi et al. 2005, 2007; Belkacem et al. 2012).

Frequencies and line widths have been reported for several solar-like and subgiant stars observed by *Kepler* by Appourchaux et al. (2012b,a, 2014a), and planet-hosting

stars by [Davies et al. \(2016\)](#). In this paper we analyze a sample of 66 main-sequence (MS) solar-like stars observed for at least 12 months by the *Kepler* mission. We extracted mode parameters by ‘peak-bagging’¹ the frequency-power spectra of the stars using a Markov chain Monte Carlo (MCMC) method ([Handberg & Campante 2011](#)) and used the Bayesian quality control presented by [Davies et al. \(2016\)](#). For each star we report values for the mode frequencies, amplitudes, line widths, and visibilities. Additionally, we provide summary descriptions for each of the above quantities, such as average seismic parameters derived from the frequencies and prescriptions of the mode line widths against frequency. The frequencies reported here will be modeled in the accompanying paper by [Silva Aguirre et al. \(2016, hereafter Paper II\)](#). The lessons learned from the presented analysis will be useful for the study of MS solar-like oscillators with the TESS ([Ricker et al. 2014](#)) and PLATO ([Rauer et al. 2013](#)) missions, and the continued analysis of these data from K2 ([Chaplin et al. 2015; Lund et al. 2016a,b](#)).

The paper is structured as follows: Section 2 describes the target sample, including the preparation of *Kepler* data and spectroscopic properties. Section 3 is devoted to the parameter estimation from the MCMC peak-bagging, including a description of the fitting strategy, the adopted Bayesian quality assurance, and the derivation of frequency difference ratios and their correlations. In Section 4 we present our results from the peak-bagging for the mode frequencies, focusing specifically on frequency errors and average seismic parameters in Section 4.1; amplitudes in Section 4.2; line widths in Section 4.3; and visibilities in Section 4.4. In Section 5 we give an example of the output generated for each of the analyzed stars. We conclude in Section 6.

2. TARGET SAMPLE

Our sample consists of 66 solar-type oscillators observed by the *Kepler* satellite, all part of the KASC ([Kjeldsen et al. 2010](#)) working group 1 (WG1) sample of solar-like p-mode oscillators. All stars have short-cadence (SC; $\Delta t = 58.89$ s) observations with an observing base line of at least 12 months, and represent some of the highest signal-to-noise solar-like oscillators observed by *Kepler*. The sample consists only of main-sequence (MS) and slightly more evolved subgiant stars. These have frequency structures corresponding to the ‘Simple’ or ‘F-type’ categories by [Appourchaux et al. \(2012a\)](#), i.e., none of the stars show obvious bumped dipole modes. The sample was peak-bagged as part of the *Kepler* dwarf seismic ‘LEGACY’ project, with the asteroseismic modeling of extracted parameters presented in Paper II. In Figure 1 the sample is shown in a Kiel-diagram (T_{eff} vs. $\log g$), with parameters adopted from Paper II; for additional details on the sample see Table 1. We note that all targets from the [Appourchaux et al. \(2014b\)](#) study of oscillation mode line widths (which included data up to Quarter 12) are part of our sample, with the exception of KIC 3424541, 3733735, 10355856, and 10909629. These four stars were classified as F-type by [Appour-](#)

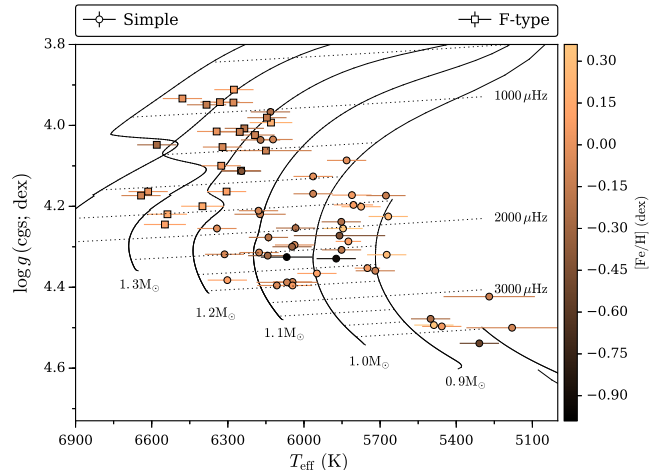


Figure 1. Kiel-diagram of sample stars, with T_{eff} and $[\text{Fe}/\text{H}]$ from the spectroscopic input (Table 1) and $\log g$ from the modeling in Paper II. Stellar evolutionary tracks have been calculated using the Garching Stellar Evolution Code (GARSTEC; [Weiss & Schlattl 2008](#)) adopting $[\text{Fe}/\text{H}] = 0$. The marker type indicates whether the star is considered to be of ‘Simple’ or ‘F-type’ character according to [Appourchaux et al. \(2012a\)](#). The dotted lines show lines of constant ν_{max} , according to the simple scaling as $\nu_{\text{max}} \propto \sqrt{T_{\text{eff}}}$, in steps of $250 \mu\text{Hz}$.

[chaux et al. \(2014b\)](#), but were omitted from our sample because of possible mixed-mode structures.

2.1. Data preparation

For most targets, data were taken continuously from Quarter 5 (Q5) through Q17. To minimize gaps in the time series, data from the initial short quarters (Q0 or Q1) were omitted unless continuous with the subsequent data. Table 1 lists the quarters used for each target. Light curves were constructed from pixel data downloaded from the KASOC database², using the procedure developed by S. Bloemen (private comm.) to define pixel masks for aperture photometry. The light curves were then corrected using the KASOC filter (see [Handberg & Lund 2014](#)). Briefly, the light curves were first corrected for jumps and concatenated. They were then median filtered using two filters of different widths — one long, one short — with the final filter being a weighted sum of the two filters based on the variability in the light curve. For the four *Kepler* objects of interest (KOIs) in the sample (KICs 3632418, 9414417, 9955598, and 10963065) an iterative removal of the planetary transits was performed based on the planetary phase-curve (see [Handberg & Lund 2014](#) for further details).

The power density spectrum (PDS) returned from the KASOC filter is made from a weighted least-squares sine-wave fitting, single-sided calibrated, normalized to Parseval’s theorem, and converted to power density by dividing by the integral of the spectral window ([Kjeldsen & Frandsen 1992; Kjeldsen 1992](#)).

2.2. Atmospheric and stellar parameters

We have obtained atmospheric parameters from the Stellar Parameters Classification tool (SPC; see [Buchhave et al. 2012](#)), with data from the Tillinghast Reflector Echelle Spectrograph (TRES; [Szentgyorgyi & Furész](#)

¹ First coined by Roger Ulrich circa 1983 (private communication) from the analogy to hill climbing where it refers to reaching the summits of a collection of peaks, the term was later re-introduced by [Appourchaux \(2003b\)](#).

² www.kasoc.phys.au.dk

Table 1

Parameters for the targets in the studied sample. Metallicities, temperatures, line-of-sight (LOS) velocities, and $v \sin i$ values are adopted from the SPC analysis of the targets unless otherwise indicated (see table notes). Systematic uncertainties of ± 59 K (T_{eff}) and ± 0.062 dex ($[\text{Fe}/\text{H}]$) have been added in quadrature as suggested by Torres et al. (2012). Values for $\log g$ are adopted from Paper II. The table lists the KIC value and other popular names given, if any; *Kepler* magnitude (Kp); frequency of maximum amplitude (ν_{max}) and large separation ($\Delta\nu$) — for uncertainties in ν_{max} and $\Delta\nu$ see Table 2; number of peak-bagged modes; the category according to Appourchaux et al. (2012a); first-last quarters during which the targets were observed in SC, and which quarters were missing in-between.

KIC	Popular name	Kp (mag)	ν_{max} (μHz)	$\Delta\nu$ (μHz)	Number of modes	Category	Braketing Quarters	Missing Quarters	T_{eff} (K)	[Fe/H] (dex)	$\log g$ (cgs; dex)	LOS (km s ⁻¹)	$v \sin i$ (km s ⁻¹)
1435467		8.88	1407	70.4	46	F-like	5.1 – 17.2		6326 ± 77	0.01 ± 0.10	4.100 ^{+0.009} _{-0.009}	-66.52 ± 0.10	11.90 ± 0.50
2837475		8.48	1558	75.7	54	F-like	5.1 – 17.2		6614 ± 77	0.01 ± 0.10	4.163 ^{+0.007} _{-0.007}	-13.28 ± 0.10	23.30 ± 0.50
3427720		9.11	2737	120.1	36	Simple	5.1 – 17.2		6045 ± 77	-0.06 ± 0.10	4.387 ^{+0.004} _{-0.005}	-22.91 ± 0.10	2.90 ± 0.50
3456181		9.66	970	52.3	45	F-like	5.1 – 11.3	6, 10	6384 ± 77	-0.15 ± 0.10	3.950 ^{+0.005} _{-0.007}	-50.12 ± 0.10	8.50 ± 0.50
3632418	Cassie	8.22	1167	60.7	54	F-like	5.1 – 17.2		6193 ± 77	-0.12 ± 0.10	4.024 ^{+0.005} _{-0.007}	-19.11 ± 0.10	8.50 ± 0.50
3656476	Java	9.52	1925	93.2	38	Simple	5.1 – 17.2	6, 10, 14	5668 ± 77	0.25 ± 0.10	4.225 ^{+0.010} _{-0.008}	-13.29 ± 0.10	2.30 ± 0.50
3735871		9.71	2863	123.0	34	Simple	5.1 – 17.2		6107 ± 77	-0.04 ± 0.10	4.396 ^{+0.007} _{-0.007}	6.90 ± 0.10	4.80 ± 0.50
4914923	Vitto	9.46	1817	88.5	38	Simple	5.1 – 17.2	6	5805 ± 77	0.08 ± 0.10	4.197 ^{+0.010} _{-0.008}	-39.16 ± 0.10	3.40 ± 0.50
5184732	Kitty	8.16	2089	95.5	49	Simple	7.1 – 17.2		5846 ± 77	0.36 ± 0.10	4.255 ^{+0.008} _{-0.010}	15.41 ± 0.10	4.00 ± 0.50
5773345		9.16	1101	57.3	45	F-like	6.1 – 11.3	9	6130 ± 84 ⁵	0.21 ± 0.09 ⁵	3.993 ^{+0.007} _{-0.008}		
5950854		10.96	1927	96.6	26	Simple	5.1 – 10.3	6, 7, 2	5853 ± 77	-0.23 ± 0.10	4.238 ^{+0.007} _{-0.007}	-42.49 ± 0.10	3.00 ± 0.50
6106415	Perky	7.18	2249	104.1	49	Simple	6.1 – 16.3	9, 13	6037 ± 77	-0.04 ± 0.10	4.295 ^{+0.009} _{-0.009}	-14.80 ± 0.10	4.90 ± 0.50
6116048	Nunny	8.42	2127	100.8	49	Simple	5.1 – 17.2		6033 ± 77	-0.23 ± 0.10	4.254 ^{+0.012} _{-0.009}	-53.26 ± 0.10	4.00 ± 0.50
6225718	Saxo2	7.50	2364	105.7	59	Simple	6.1 – 17.2		6313 ± 77	-0.07 ± 0.10	4.319 ^{+0.007} _{-0.005}	-1.32 ± 0.10	5.50 ± 0.50
6508366	Baloo	8.97	958	51.6	50	F-like	5.1 – 17.2		6331 ± 77	-0.05 ± 0.10	3.942 ^{+0.007} _{-0.005}	2.62 ± 0.10	22.50 ± 0.50
6603624	Saxo	9.09	2384	110.1	44	Simple	5.1 – 17.2		5674 ± 77	0.28 ± 0.10	4.320 ^{+0.005} _{-0.004}	-58.82 ± 0.10	0.70 ± 0.50
6679371		8.73	942	50.6	55	F-like	5.1 – 17.2		6479 ± 77	0.01 ± 0.10	3.934 ^{+0.008} _{-0.007}	-23.58 ± 0.10	17.30 ± 0.50
6933899	Fred	9.62	1390	72.1	39	Simple	5.1 – 17.2		5832 ± 77	-0.01 ± 0.10	4.079 ^{+0.009} _{-0.008}	-6.97 ± 0.10	3.60 ± 0.50
7103006		8.86	1168	59.7	54	F-like	5.1 – 17.2		6344 ± 77	0.02 ± 0.10	4.015 ^{+0.007} _{-0.007}	-22.36 ± 0.10	12.10 ± 0.50
7106245		10.79	2398	111.4	24	Simple	5.1 – 15.3		6068 ± 102 ³	-0.99 ± 0.19 ³	4.310 ^{+0.008} _{-0.010}		
7206837	Bagheera	9.77	1653	79.1	45	F-like	5.1 – 17.2		6305 ± 77	0.10 ± 0.10	4.163 ^{+0.007} _{-0.008}	-18.54 ± 0.10	9.30 ± 0.50
7296438		10.09	1848	88.7	32	Simple	7.1 – 11.3		5775 ± 77	0.19 ± 0.10	4.201 ^{+0.010} _{-0.009}	3.36 ± 0.10	1.80 ± 0.50
7510397		7.77	1189	62.2	47	Simple	7.1 – 17.2	16	6171 ± 77	-0.21 ± 0.10	4.036 ^{+0.004} _{-0.007}	-34.10 ± 0.10	6.40 ± 0.50
7680114	Simba	10.07	1709	85.1	41	Simple	5.1 – 17.2	6, 7, 2, 10	5811 ± 77	0.05 ± 0.10	4.172 ^{+0.010} _{-0.008}	-58.93 ± 0.10	3.00 ± 0.50
7771282		10.77	1465	72.5	32	F-like	5.1 – 11.3	6	6248 ± 77	-0.02 ± 0.10	4.112 ^{+0.007} _{-0.007}	-0.38 ± 0.10	8.30 ± 0.50
7871531		9.25	3456	151.3	35	Simple	5.1 – 17.2		5501 ± 77	-0.26 ± 0.10	4.478 ^{+0.005} _{-0.007}	-20.65 ± 0.10	0.90 ± 0.50
7940546	Akela	7.40	1117	58.8	58	F-like	7.1 – 17.2		6235 ± 77	-0.20 ± 0.10	4.000 ^{+0.002} _{-0.002}	-3.03 ± 0.10	9.10 ± 0.50
7970740		7.78	4197	173.5	46	Simple	6.1 – 17.2		5309 ± 77	-0.54 ± 0.10	4.539 ^{+0.005} _{-0.004}	-60.24 ± 0.10	0.00 ± 0.50
8006161	Doris	7.36	3575	149.4	54	Simple	5.1 – 17.2		5488 ± 77	0.34 ± 0.10	4.494 ^{+0.007} _{-0.007}	-45.56 ± 0.10	0.70 ± 0.50
8150065		10.74	1877	89.3	24	Simple	5.1 – 10.3	6, 7, 2	6173 ± 101 ³	-0.13 ± 0.15 ³	4.220 ^{+0.008} _{-0.008}		
8179536		9.46	2075	95.1	39	Simple	5.1 – 11.3	6	6343 ± 77	-0.03 ± 0.10	4.255 ^{+0.010} _{-0.010}	-31.40 ± 0.10	9.90 ± 0.50
8228742	Horace	9.37	1190	62.1	44	Simple	5.1 – 17.2		6122 ± 77	-0.08 ± 0.10	4.032 ^{+0.004} _{-0.005}	10.71 ± 0.10	6.10 ± 0.50
8379927	Arthur	6.96	2795	120.3	49	Simple	2.1 – 17.2	2, 2, 2, 3, 3, 4	6067 ± 120 ¹	-0.10 ± 0.15 ¹	4.388 ^{+0.007} _{-0.008}		
8394589		9.52	2397	109.5	44	Simple	5.1 – 17.2		6143 ± 77	-0.29 ± 0.10	4.322 ^{+0.008} _{-0.008}	22.58 ± 0.10	6.40 ± 0.50
8424992		10.32	2534	120.6	22	Simple	7.1 – 10.3		5719 ± 77	-0.12 ± 0.10	4.359 ^{+0.007} _{-0.007}	-87.63 ± 0.10	1.30 ± 0.50
8694723		8.88	1471	75.1	53	Simple	5.1 – 17.2		6246 ± 77	-0.42 ± 0.10	4.113 ^{+0.009} _{-0.007}	15.88 ± 0.10	7.10 ± 0.50
8760414	Pucky	9.62	2455	117.2	44	Simple	5.1 – 17.2		5873 ± 77	-0.92 ± 0.10	4.320 ^{+0.003} _{-0.007}	-115.64 ± 0.10	2.50 ± 0.50
8938364	Java2	10.11	1675	85.7	41	Simple	6.1 – 17.2		5677 ± 77	-0.13 ± 0.10	4.173 ^{+0.002} _{-0.007}	-68.12 ± 0.10	2.40 ± 0.50
9025370		8.85	2989	132.6	28	Simple	5.1 – 17.2		5270 ± 180 ²	-0.12 ± 0.18 ²	4.423 ^{+0.004} _{-0.007}		
9098294		9.76	2315	108.9	34	Simple	5.1 – 17.2		5852 ± 77	-0.18 ± 0.10	4.308 ^{+0.007} _{-0.005}	-71.72 ± 0.10	3.00 ± 0.50
9139151	Carlsberg	9.18	2690	117.3	35	Simple	5.1 – 17.2		6302 ± 77	0.10 ± 0.10	4.382 ^{+0.008} _{-0.008}	-29.06 ± 0.10	5.50 ± 0.50
9139163	Punto	8.33	1730	81.2	57	F-like	5.1 – 17.2		6400 ± 84 ⁵	0.15 ± 0.09 ⁵	4.200 ^{+0.008} _{-0.009}		
9206432		9.08	1866	84.9	49	F-like	5.1 – 12.3	7	6538 ± 77	0.16 ± 0.10	4.220 ^{+0.007} _{-0.005}	-1.73 ± 0.10	6.70 ± 0.50
9353712		10.84	934	51.5	41	F-like	5.1 – 12.3	6, 7, 2	6278 ± 77	-0.05 ± 0.10	3.943 ^{+0.005} _{-0.007}	-46.67 ± 0.10	6.80 ± 0.50
9410862		10.71	2279	107.4	33	Simple	5.1 – 15.3		6047 ± 77	-0.31 ± 0.10	4.300 ^{+0.008} _{-0.009}	-56.84 ± 0.10	3.80 ± 0.50
9414417		9.58	1155	60.1	54	F-like	6.1 – 17.2	7	6253 ± 75 ⁶	-0.13 ± 0.10 ⁶	4.016 ^{+0.005} _{-0.005}		
9812850		9.47	1255	64.7	49	F-like	5.1 – 17.2		6321 ± 77	-0.07 ± 0.10	4.053 ^{+0.009} _{-0.008}	31.18 ± 0.10	12.50 ± 0.50
9955598		9.44	3617	153.3	31	Simple	5.1 – 17.2		5457 ± 77	0.05 ± 0.10	4.497 ^{+0.005} _{-0.007}	-28.48 ± 0.10	1.10 ± 0.50
9965715		9.34	2079	97.2	40	Simple	5.1 – 13.3	7, 11	5860 ± 180 ²	-0.44 ± 0.18 ²	4.272 ^{+0.008} _{-0.008}		
10068307		8.18	995	53.9	49	Simple	7.1 – 17.2		6132 ± 77	-0.23 ± 0.10	3.967 ^{+0.004} _{-0.004}	-14.78 ± 0.10	6.40 ± 0.50
10079226		10.07	2653	116.3	31	Simple	7.1 – 10.3		5949 ± 77	0.11 ± 0.10	4.366 ^{+0.005} _{-0.005}	-37.15 ± 0.10	4.00 ± 0.50
10162436		8.61	1052	55.7	51	F-like	5.1 – 17.2	7, 10, 11, 15	6146 ± 77	-0.16 ± 0.10	3.981 ^{+0.005} _{-0.005}	-52.92 ± 0.10	6.40 ± 0.50
10454113	Pinocha	8.62	2357	105.1	54	Simple	5.1 – 17.2		6177 ± 77	-0.07 ± 0.10	4.314 ^{+0.005} _{-0.005}	-21.22 ± 0.10	6.10 ± 0.50
10516096	Manon	9.46	1690	84.4	40	Simple	5.1 – 17.2	6, 10, 1	5964 ± 77	-0.11 ± 0.10	4.169 ^{+0.011} _{-0.010}	1.28 ± 0.10	4.60 ± 0.50
10644253	Mowgli	9.16	2900	123.1	34	Simple	5.1 – 17.2		6045 ± 77	0.06 ± 0.10	4.396 ^{+0.008} _{-0.007}	-18.91 ± 0.10	3.20 ± 0.50
10730618		10.45	1282	66.3	39	F-like	0 – 11.3	6, 7, 2	6150 ± 180 ²	-0.11 ± 0.18 ²	4.062 ^{+0.007} _{-0.008}		
10963065	Rudy	8.77	2204	103.2	42	Simple	2.3 – 17.2	3, 4, 8, 9, 12, 16	6140 ± 77	-0.19 ± 0.10	4.277 ^{+0.011} _{-0.011}	-54.95 ± 0.10	4.50 ± 0.50
11081729		9.03	1968	90.1	40	F-like	5.1 – 17.2		6548 ± 83	0.11 ± 0.10	4.245 ^{+0.009} _{-0.010}	0.27 ± 0.10	24.10 ± 0.50
11253226	Tinky	8.44	1591	76.9	58	F-like	5.1 – 17.2		6642 ± 77	-0.08 ± 0.10	4.173 ^{+0.004} _{-0.005}	10.65 ± 0.10	14.40 ± 0.50
11772920		9.66	3675	157.7	27	Simple	5.1 – 17.2		5180 ± 180 ²	-0.09 ± 0.18 ²	4.500 ^{+0.008} _{-0.005}		
12009504	Dushera	9.32											

2007; Fűrész 2008) on the 1.5-m Tillinghast telescope at the F. L. Whipple Observatory. Information from the SPC analysis is available on the *Kepler* Community Follow-up Observing Program (CFOP) website³. In the SPC derivation of parameters, $\log g$ values were fixed to the asteroseismic values given in Chaplin et al. (2014) to decrease the impact on uncertainties from correlations between T_{eff} , $\log g$, and $[\text{Fe}/\text{H}]$. We added in quadrature to the derived uncertainties on T_{eff} and $[\text{Fe}/\text{H}]$ systematic uncertainties of ± 59 K and ± 0.062 dex, as suggested by Torres et al. (2012). For a subset of targets, spectroscopic values were taken from the literature (Table 1). We also list in Table 1 the line-of-sight (LOS) velocities derived from the SPC analysis, which should be used in any modeling efforts using individual frequencies to account for the Doppler shift of the frequencies (Davies et al. 2014b). In Figure 2 we show the values of these Doppler frequency shifts, which in some cases exceed the uncertainties on the individual frequencies. Even if the frequency shift is small compared to the uncertainties on the mode frequencies, it is systematic and should therefore always be corrected to avoid biases in the stellar modeling. The SPC LOS values have been corrected by -0.61 km s^{-1} to put the velocities onto the IAU system. This correction is primarily accounting for the fact that the CfA library of synthetic spectra does not include the solar gravitational redshift. Stellar parameters used in this paper, such as masses and radii, are adopted from the modeling effort presented in Paper II.

2.3. Sun-as-a-star data

As part of the project, the Sun was fitted in the same manner as the sample targets (see Section 3). This was done primarily to test the modeling efforts presented in Paper II against a known reference, and at the same time to assess the returns from the peak-bagging. The power spectrum was produced from data from VIRGO⁴ (Fröhlich 2009) on-board the *SoHO*⁵ spacecraft (Fröhlich et al. 1995; Fröhlich et al. 1997). Specifically, a time series was created from a weighted sum of the green and red channels of the VIRGO Sun photometers (SPM) with central wavelengths of 500 nm (green), and 862 nm (red). Weights were selected such that the response-function weighted centroid wavelength from the two SPM channels matched that from the *Kepler* response function (641.7 nm). The two-component light curves were filtered individually using a 30-day median filter and then summed in relative flux units with the appropriate weights (green: 0.785; red: 0.215). The solar time series had a length of 1150 days (corresponding to ~ 3.15 years, or the approximate duration of 13 Quarters). This is the typical time series length for targets in the sample. To find the level to which the spectrum should be degraded, the magnitude distribution was computed for the sample, including also stars that have a mixed-mode character. The median magnitude of $\text{Kp} \approx 9.17$ closely matches that of KIC 9139151 and so noise was added to the solar time series to match the level of this star.

The solar data set will primarily be used for estimates relating to frequencies, such as $\Delta\nu$ and ν_{max} , but not

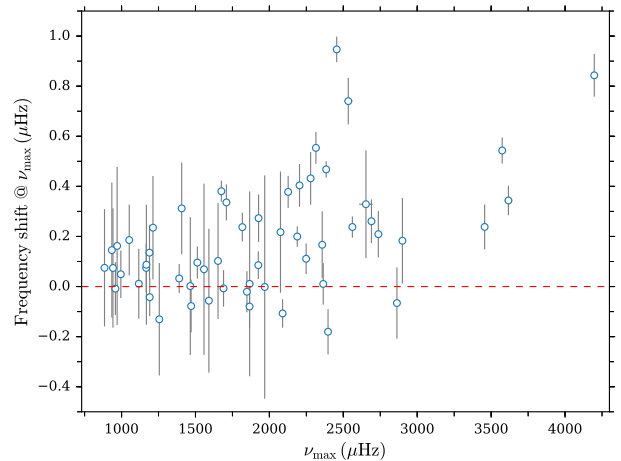


Figure 2. Frequency shift at ν_{max} from line-of-sight velocities of the stars in the sample (see Table 1). The uncertainty indicates for a given target the minimum frequency uncertainty of the five radial modes nearest ν_{max} . The frequency uncertainty on individual modes is in several cases lower than the line-of-sight frequency shift. Large or small, the systematic shift can thus cause bias in the modeling if left uncorrected.

for analysis of line widths, amplitudes, or visibilities. This is because one cannot, with the simple weighting of relatively narrow band filters done here, assume that the measurements of amplitudes and visibilities adhere strictly to what would be observed with *Kepler*.

3. PARAMETER ESTIMATION

3.1. Oscillation spectrum model

To model the power spectrum, we described each oscillation mode as a Lorentzian function (L_{nlm}), which corresponds to the shape of a stochastically-excited and intrinsically-damped mode (Batchelor 1953; Kumar et al. 1988):

$$L_{nlm}(\nu) = \frac{\mathcal{E}_{lm}(i_\star) \tilde{V}_l^2 S_{n0}}{1 + \frac{4}{\Gamma_{nl}^2} (\nu - \nu_{nl} + m\nu_s)^2}. \quad (3.1)$$

Each mode is characterized by the frequency ν_{nl} of the zonal ($m = 0$) component, a height $H_{nlm} = \mathcal{E}_{lm}(i_\star) \tilde{V}_l^2 S_{n0}$, a FWHM mode width Γ_{nl} , and a rotational splitting ν_s (assumed constant with frequency; see Lund et al. 2014b, for a discussion of the impact of differential rotation on the constancy of ν_s). In H_{nlm} , $\mathcal{E}_{lm}(i_\star)$ is the geometrical factor that sets the relative visibilities between the $2l+1$ (azimuthal) m -components as a function of the stellar inclination i_\star (see, Dziembowski 1977; Gizon & Solanki 2003); \tilde{V}_l^2 denotes the squared visibility (power units) of a non-radial mode relative to a radial mode at the same frequency, i.e.,

$$\tilde{V}_l^2 = (V_l/V_0)^2 \quad \text{and} \quad \tilde{V}_{\text{tot}}^2 = \sum_l \tilde{V}_l^2, \quad (3.2)$$

from the spatial filtering resulting from integrating the intensity for a mode of a given degree over the stellar surface; S_{n0} then denotes the height of the radial mode of order n . The use of \tilde{V}_l^2 assumes equipartition of energy between modes of different angular degrees, thus only with a dependence on frequency. This is a good assumption for stochastically excited low degree high or-

³ <https://cfop.ipac.caltech.edu/home/>

⁴ Variability of Solar Irradiance and Gravity Oscillations

⁵ Solar and Heliospheric Observatory

der acoustic modes, observed for many lifetimes (see, e.g., Christensen-Dalsgaard & Gough 1982).

The full model to fit to the power spectrum is then given by a series of the Lorentzian functions in Equation 3.1 as

$$\mathcal{P}(\nu) = \eta^2(\nu) \left(\sum_{n=n_0}^{n_{\max}} \sum_{l=l_0}^{l_{\max}} \sum_{m=-l}^l L_{nlm}(\nu) + N(\nu) \right) + W. \quad (3.3)$$

Here $N(\nu)$ denotes the adopted background function; W is a constant white shot-noise component; $\eta^2(\nu)$ describes the apodization of the signal power at frequency ν from the ~ 1 -minute sampling of the temporal signal (see, e.g., Chaplin et al. 2011c; Kallinger et al. 2014), and is given by:

$$\eta^2(\nu) = \frac{\sin^2(x)}{x^2} \quad \text{with } x = \pi\nu\Delta t, \quad (3.4)$$

where Δt gives the integration time for the observations⁶. For the background we used the function (Harvey et al. 1993; Andersen et al. 1994):

$$N(\nu) = \sum_{i=1}^2 \frac{\xi_i \sigma_i^2 \tau_i}{1 + (2\pi\nu\tau_i)^{\alpha_i}}, \quad (3.5)$$

which characterizes a temporal signal from granulation having an exponentially decaying autocovariance, with a power of the temporal decay rate as $-2/\alpha_i$; τ_i gives the characteristic time scale of the i th background component; σ_i the corresponding root-mean-square (RMS) variation of the component in the time domain. The normalization constants ξ_i are such that the integral (for positive frequencies) of the background component equals σ_i^2 , in accordance with the Parseval-Plancherel theorem (see, e.g., Michel et al. 2009; Karoff et al. 2013; Kallinger et al. 2014).

In fitting Equation 3.3 to the power spectrum, we varied the mode amplitude (square-root of integrated mode power) rather than the mode height to decrease the correlation with Γ_{nl} (Toutain & Appourchaux 1994). To obtain the height (S) in power density units from the varied amplitude (A) we used the relation (Fletcher et al. 2006; Chaplin et al. 2008b):

$$S_{nl} \approx 2A_{nl}^2 / \pi\Gamma_{nl}. \quad (3.6)$$

This is a valid approximation for a single-sided power spectrum when the modes are well resolved, i.e., when the observing duration T_{obs} greatly exceeds the mode life time $2/\pi\Gamma$. We note that A_{nl} and Γ_{nl} were varied for radial modes only ($l = 0$), and then linearly interpolated to the frequencies of the non-radial modes. The fitting of the power spectrum then finally involved estimating the parameters $\Theta = \{\nu_s, i_\star, W, \tau_i, \sigma_i, \alpha_i, A_{n0}, \Gamma_{n0}, \nu_{nl}, \tilde{V}_l\}$.

3.2. Fitting strategy

Parameters were estimated in a Bayesian manner from a global peak-bagging fit to the power spectrum including all parameters Θ (see, e.g., Handberg & Campante

2011). This was done by mapping the posterior probability of the parameters Θ given the data D and any prior information I , which from Bayes' theorem is given as:

$$p(\Theta|D, I) = \frac{p(\Theta|I)p(D|\Theta, I)}{p(D|I)}. \quad (3.7)$$

Here $p(\Theta|I)$ is the prior probability assigned to the parameters Θ given I , and $p(D|\Theta, I)$ is the likelihood of the observed data D given the parameters Θ . $p(D|I)$, known as the *evidence*, is given by the integral of the numerator over the full parameter space, and thus acts as a normalization. The evidence is unnecessary in the mapping of the relative posterior distribution, so we end up mapping:

$$\ln p(\Theta|D, I) = \ln p(\Theta|I) + \ln \mathcal{L}(\Theta) + C, \quad (3.8)$$

where logarithmic units are adopted for numerical stability, and C is a constant. Assuming a χ^2 2-d.o.f. statistic for the power spectrum relative to the limit spectrum in Equation 3.3 (Gabriel 1994), the logarithm of the likelihood for a given observed power, O_j , relates to the limit spectrum, $\mathcal{P}(\nu_j; \Theta)$, as (see Duvall & Harvey 1986; Anderson et al. 1990; Toutain & Appourchaux 1994):

$$\ln \mathcal{L}(\Theta) = - \sum_j \left\{ \ln \mathcal{P}(\nu_j; \Theta) + \frac{O_j}{\mathcal{P}(\nu_j; \Theta)} \right\}. \quad (3.9)$$

Mapping of Equation 3.7 was performed using an affine invariant ensemble Markov chain Monte Carlo (MCMC) sampler (see Goodman & Weare 2010), specifically via the Python implementation `emcee` by Foreman-Mackey et al. (2013). For a given fit we employed 500 so-called *walkers* that were initiated by sampling from the priors of the model parameters (see Section 3.2.2). Each of these was run for at least 2000 steps. We further adopted parallel tempering using five temperatures, with tempering parameters determined according to Benomar et al. (2009), and a thinning of the MCMC chains by a factor of 10. As part of the post-processing, the appropriate burn-in for a given target and whether sufficient mixing had been achieved was determined by (1) visual inspection of the chain traces, (2) using the Geweke diagnostic (Geweke 1992), and (3) by assessing the length of the chain compared to the autocorrelation time (giving the number of independent draws from the target distribution).

Final parameter estimates were obtained from the median (frequencies) or mode (amplitudes, line widths, and visibilities) of the marginalized posterior probability density functions (PDFs) — with the MCMC sampling the marginalization is obtained naturally and the PDF for a given parameter is simply given by the normalized distribution of the samples of the parameter. A measure for the parameter uncertainty is given by the credible interval as the interval spanning the 68.27% highest probability density (HPD) of the PDF.

3.2.1. Mode identification and initial guesses

Before the peak-bagging can commence, initial guesses must be defined for the mode-frequencies to include in Equation 3.3, and the modes must further be identified in terms of their angular degree l . For acoustic modes

⁶ In *Kepler* Δt equals the sampling time wherefore x sometimes is given as $x = \frac{\pi\nu}{2\nu_{\text{Nyq}}}$, where ν_{Nyq} is the Nyquist frequency — this is, however, an imprecise definition, because ν_{Nyq} relates to the sampling time whereas the apodization relates to the integration time.

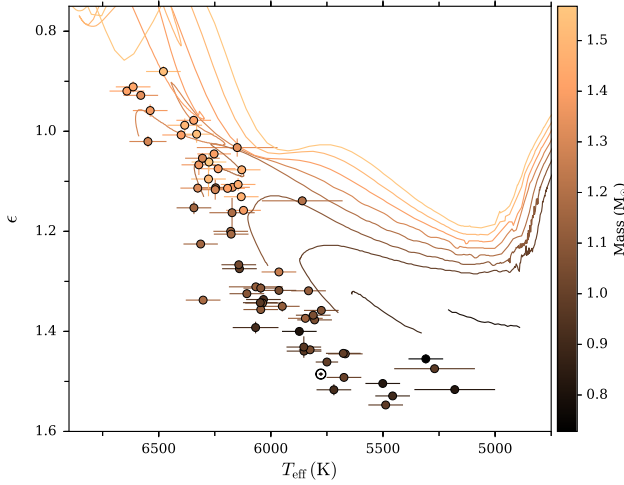


Figure 3. Measured values of ϵ against T_{eff} . The color indicates the modeled mass of the stars using the results from the BASTA pipeline (Paper II). Shown are also ϵ -evolutionary tracks from White et al. (2011a), calculated from ASTEC evolutionary tracks with $Z_0 = 0.017$ (Christensen-Dalsgaard 2008), for masses going from $0.8 M_\odot$ to $1.6 M_\odot$ in steps of $0.1 M_\odot$.

of high radial order n and low angular degree l the frequencies may be approximated by the asymptotic relation (Tassoul 1980; Scherrer et al. 1983):

$$\nu_{nl} \approx (n + \frac{l}{2} + \epsilon)\Delta\nu - l(l+1)D_0. \quad (3.10)$$

Here $\Delta\nu$ is the large separation, given by the average frequency spacing between consecutive overtones n for modes of a given l ; ϵ is a dimensionless offset sensitive to the surface layers (see, e.g., Gough 1986; Pérez Hernández & Christensen-Dalsgaard 1998; Roxburgh 2016); D_0 is sensitive to the sound-speed gradient near the stellar core (Scherrer et al. 1983; Christensen-Dalsgaard 1993). Mode identification was then, by and large, achieved via visual inspection of échelle diagrams (Grec et al. 1983; Bedding 2011). Here, modes of a given l will form vertical ridges for the correct average large separation. The identification of l and radial order n was checked against the relation for ϵ as a function of T_{eff} (Figure 3), where ϵ can be found from the échelle diagram (Figure 4) by the vertical position of the radial degree ($l = 0$) ridge (see White et al. 2011b,a).

For this study, consisting of high S/N oscillation signals, the identification was relatively simple. Initial guesses for mode frequencies were primarily defined by hand from smoothed versions of the power density spectra. These were checked against frequencies returned from applying the pseudo-global fitting method of Fletcher et al. (2009).

The power spectrum was fitted in the range $f_{\text{min}} - 5\Delta\nu$ to $f_{\text{max}} + 5\Delta\nu$, where f_{min} and f_{max} denote the minimum and maximum mode frequency included in the peak-bagging. Before the peak-bagging fit, a background-only fit was performed in the range from $5 \mu\text{Hz}$ to the SC Nyquist frequency $\nu_{\text{ny}} (\sim 8496 \mu\text{Hz})$. In this fit, the power from solar-like oscillations was accounted for by a Gaussian envelope centered at ν_{max} . Using the posterior distributions from the background-only fit as priors in the peak-bagging allowed us to constrain the background in the relatively narrow frequency range included.

3.2.2. Prior functions

For mode frequencies, we adopted $14 \mu\text{Hz}$ wide top-hat priors centered on the initial guesses of the frequencies. Top-hat priors were also adopted for the rotational frequency splitting ν_s and inclination i_\star , with the inclination sampled from the range -90° to 180° . The reason for the extended range in inclination is that if the solution is close to either $i_\star = 0^\circ$ or $i_\star = 90^\circ$ any sharp truncation from a prior at these values will make it difficult to properly sample these extreme values. The final posterior on the inclination was then obtained from folding the samples onto the range from 0° to 90° .

For the amplitudes and line widths we adopted a modified Jeffrey’s prior, given as (see, e.g., Handberg & Campante 2011)

$$\mathcal{F}(\theta) = \begin{cases} \frac{1}{(\theta + \theta_{\text{uni}}) + \ln[(\theta_{\text{uni}} + \theta_{\text{max}})/\theta_{\text{uni}}]} & , \quad 0 \leq \theta \leq \theta_{\text{max}} \\ 0 & , \quad \text{otherwise} \end{cases} \quad (3.11)$$

which behaves as a uniform prior when $\theta \ll \theta_{\text{uni}}$ and a standard scale invariant Jeffrey’s prior when $\theta \gg \theta_{\text{uni}}$. The maximum of the prior occurs at θ_{max} .

For mode visibilities we adopted truncated Gaussian functions $\mathcal{N}(\theta_0, \sigma, \theta_{\text{min}}, \theta_{\text{max}})$ as priors, defined as:

$$\mathcal{F}(\theta) = \begin{cases} \frac{1}{D \sqrt{2\pi}\sigma} \exp\left(\frac{-(\theta - \theta_0)^2}{2\sigma^2}\right) & , \quad \theta_{\text{min}} \leq \theta \leq \theta_{\text{max}} \\ 0 & , \quad \text{otherwise} \end{cases} \quad (3.12)$$

with D given as:

$$D = \frac{\text{erf}\left(\frac{\theta_{\text{max}} - \theta_0}{\sqrt{2}\sigma}\right) - \text{erf}\left(\frac{\theta_{\text{min}} - \theta_0}{\sqrt{2}\sigma}\right)}{2}. \quad (3.13)$$

Here, erf denotes the *error function*, θ_0 and σ give the chosen mode value and width of the Gaussian, and θ_{min} and θ_{max} give the lower and upper truncations of the Gaussian. We specifically adopted $\mathcal{N}(1.5, 1.5, 0, 3)$ for $l = 1$, $\mathcal{N}(0.5, 0.5, 0, 1)$ for $l = 2$, and $\mathcal{N}(0.05, 0.05, 0, 0.5)$ for $l = 3$. Similarly, we adopted truncated Gaussian priors for the parameters of the background. Here we used as the Gaussian mode value (θ_0) the median of the posteriors from the background-only fit (see Section 3.2.1), and we adopted $\sigma = 0.1 \theta_0$, $\theta_{\text{min}} = 0.1 \theta_0$, and $\theta_{\text{max}} = 10 \theta_0$.

To ensure that the mode identification did not swap for neighboring $l = 0$ and 2 modes, which is a risk especially at high frequency where the small frequency separation $\delta\nu_{02} = \nu_{n,0} - \nu_{n-1,2}$ is small compared to the mode line width, we added the prior constraint that on $\delta\nu_{02}$ that it must be positive. In principle $\delta\nu_{02}$ could be negative in the event of bumped $l = 2$ modes, however, because the stars were screened for bumped $l = 1$ modes and the strength of an avoided $l = 2$ crossing is expected to be lower than that of a $l = 1$ mode due to the larger evanescent region (see, e.g., Aerts et al. 2010; Deheuvels & Michel 2011), we do not expect values of $\delta\nu_{02} < 0$ for these stars.

3.2.3. Quality assurance

For each fitted mode, we computed a metric for the quality of the fit in the same manner as detailed in Davies et al. (2016), see also Appourchaux (2004) and Appourchaux et al. (2012a). Briefly, we first ran a fast null hypothesis (H_0) test to identify which modes had an unambiguous detection, and for which the probability of

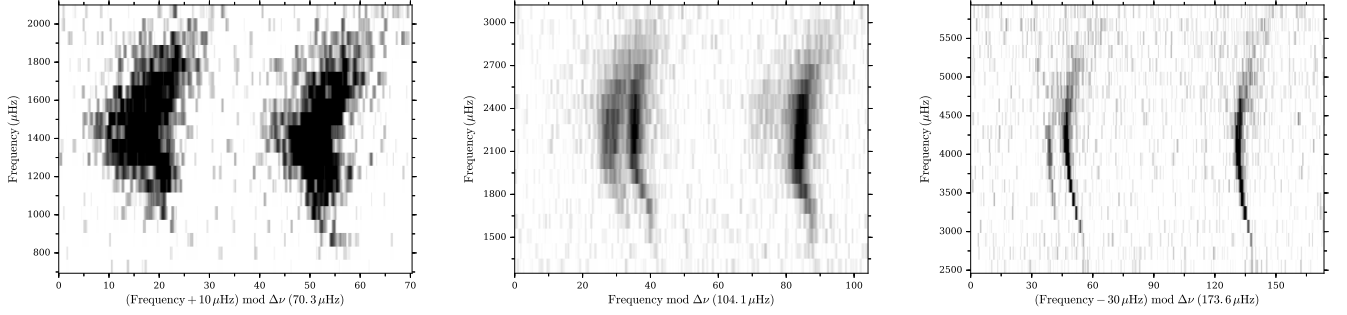


Figure 4. Échelle diagrams for three sample stars with different values of ν_{\max} ; KIC1435467 (left), KIC 6106415 (middle), and KIC 7970740 (right). The color-scale goes from white (low power) to black (high power), and the power spectra have been background corrected and smoothed by a $2\mu\text{Hz}$ Epanechnikov filter (Epanechnikov 1969; Hastie et al. 2009). The échelle spectra have been shifted along the abscissa for a better rendering (see individual labels), with the $l = 1$ ridges being the right-most in each case and the $l = 0, 2$ ridges the left-most.

detection $p(\text{Det}_{n,l}|D)$ conditioned on the data D needed to be explicitly determined and evaluated. This was done because the explicit determination of $p(\text{Det}_{n,l}|D)$ is computationally expensive. In the fast H_0 test it was assessed whether the S/N in the background corrected power spectrum (D) for a given proposed mode, with the power binned across a number of frequencies to account for the spread in power from the mode line width, was consistent with a pure noise spectrum or whether the H_0 hypothesis could be rejected at the $p(D|H_0) = 0.001$ level (Appourchaux 2003a, 2004; Lund et al. 2012). When the high S/N modes had been identified in this manner the probability of detection $p(\text{Det}_{n,l}|D)$ was computed for the remainder low-S/N modes.

In the computation of $p(\text{Det}_{n,l}|D)$ both the probability of D assuming H_0 , $p(D|H_0)$, and the probability of the alternative hypothesis H_1 of a detected mode, $p(D|H_1)$, need to be estimated. The latter was assessed by integrating the probability of measuring the data given a model over a range of mode parameters θ — this integration was achieved by marginalizing over $p(D|H_1, \theta)$, with the parameter space sampled over the posteriors from the peak-bagging using *emcee*. Specifically, a mixture-model was used in which both $p(D|H_0)$ and $p(D|H_1)$ were optimized simultaneously to give $p(D|\theta, p_a)$, the probability of observing the data given the model of a given set of modes with parameters θ :

$$p(D|\theta, p_a) = (1 - p_a)p(D|H_0) + p_ap(D|H_1). \quad (3.14)$$

Here, the parameter p_a , ranging between 0 and 1, then gives the probability of the detection $p(D|\text{Det}_l)$ of the given set of modes. This probability was kept free in the *emcee* run, and in the end was assessed from the posterior distribution of p_a (Hogg et al. 2010; Farr et al. 2015). We finally report the Bayes factor K , given as the median of the posterior probability distributions of the natural logarithm of the ratio of $p(D|\text{Det}_l)$ over $p(D|H_0)$, as:

$$\ln K = \ln p(D|\text{Det}_l) - \ln p(D|H_0). \quad (3.15)$$

The value of $\ln K$ can then be assessed qualitatively on

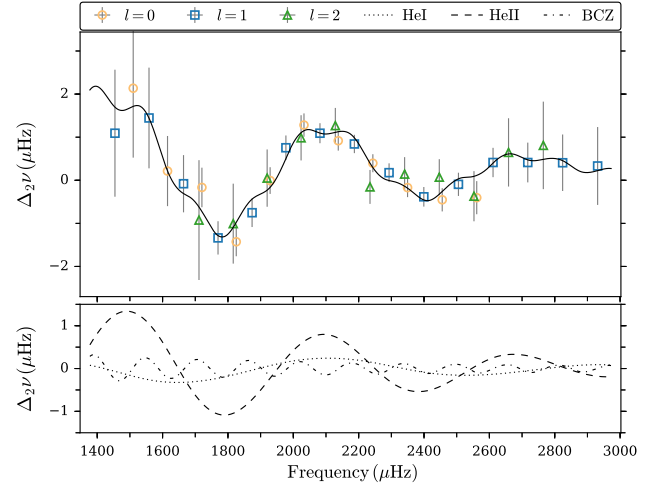


Figure 5. Top: Example of calculated second differences $\Delta_2\nu(n, l)$ from Equation 3.20, for the star KIC 6225718 (Saxo2). The complete figure set (67 figures) is available in the online journal. The frequencies used to calculate $\Delta_2\nu(n, l)$ are given in Table 6, and frequency uncertainties were taken as the average of the asymmetric uncertainties. A clear oscillation is seen in $\Delta_2\nu$, indicating acoustic glitches. The full line gives the acoustic glitch fit to $\Delta_2\nu(n, l)$ by Houdek et al. (in prep.). Only the values of $\Delta_2\nu$ used in the fitting by Houdek et al. (in prep.) are shown. Bottom: Individual components from the acoustic glitches to $\Delta_2\nu(n, l)$ (full line in top panel), showing the contributions from the first (HeI) and second (HeII) stages of Helium ionization, and the base of the convective zone (BCZ).

the Kass & Raftery (1995) scale as follows:

$$\ln K = \begin{cases} < 0 & \text{favours } H_0 \\ 0 \text{ to } 1 & \text{not worth more than a bare mention} \\ 1 \text{ to } 3 & \text{positive} \\ 3 \text{ to } 5 & \text{strong} \\ > 5 & \text{very strong} \end{cases}$$

For a detailed account of the quality control we refer to Davies et al. (2016).

3.3. Derived quantities and correlations

Besides the parameters included in the model of the power spectrum, we computed parameters for derived quantities, such as frequency difference ratios. Firstly, we derived the frequency ratios defined as (Roxburgh &

Vorontsov 2003)

$$\begin{aligned} r_{01}(n) &= \frac{d_{01}(n)}{\Delta v_1(n)}, & r_{10}(n) &= \frac{d_{10}(n)}{\Delta v_0(n+1)} \\ r_{02}(n) &= \frac{v_{n,0} - v_{n-1,2}}{\Delta v_1(n)}. \end{aligned} \quad (3.16)$$

Here, d_{01} and d_{10} are the smooth five-point small frequency separations defined as

$$d_{01}(n) = \frac{1}{8} (v_{n-1,0} - 4v_{n-1,1} + 6v_{n,0} - 4v_{n,1} + v_{n+1,0}) \quad (3.17)$$

$$d_{10}(n) = -\frac{1}{8} (v_{n-1,1} - 4v_{n,0} + 6v_{n,1} - 4v_{n+1,0} + v_{n+1,1}), \quad (3.18)$$

and the large separation is

$$\Delta v_l(n) = \Delta v_{n,l} - \Delta v_{n-1,l}. \quad (3.19)$$

These ratios are useful for model fitting, where they can be used instead of individual frequencies (Lebreton & Goupil 2014; Silva Aguirre et al. 2015) because they are largely insensitive to the stellar surface layers (Kjeldsen et al. 2008a; Ball & Gizon 2014; Roxburgh 2015; Ball et al. 2016). For further details on the use of these ratios we refer to Roxburgh & Vorontsov (2003, 2013), Roxburgh (2005), Oti Floranes et al. (2005), and Silva Aguirre et al. (2011, 2013).

Secondly, we calculated the second differences:

$$\Delta_2 v(n, l) = v_{n-1,l} - 2v_{n,l} + v_{n+1,l}, \quad (3.20)$$

which are useful for studying acoustic glitches from the base of the convection zone and the position of the second helium ionization zone (see, e.g., Basu et al. 1994, 2004; Houdek & Gough 2007; Mazumdar et al. 2014). Figure 5 gives an example of the second differences for KIC 6225718 (Saxo2), together with the best-fitting glitch model from Houdek et al. (in prep.). The second differences shown in Figure 5 were computed using Equation 3.20 on the frequencies given in Table 6, and frequency uncertainties were taken as the average of the asymmetric uncertainties.

In computing these derived quantities we used the full posterior probability distributions (PPDs) of the individual frequencies entering in the descriptions, rather than using simply the median value for the PPD of a given frequency. This ensured that any asymmetries, and deviations from a Gaussian shape in general, that might be for the PPDs of the individual frequencies were properly propagated to the description of the derived quantity. The final value and credible interval were then computed from the distribution of the quantity in the same manner as for the parameters describing the model power spectrum. Using the full distribution also allowed us to easily compute the correlations between the above frequency differences and ratios, such that these might be included as a covariance matrix in any fit to the quantities.

The parameter correlations were calculated in a robust way using the median absolute deviation (MAD) correlation coefficient r_{MAD} (see Pasman & Shevlyakov 1987; Shevlyakov & Smirnov 2011). The MAD estimator is given by the median of the absolute deviation around the median. We opted for r_{MAD} instead of the standard Pearson product-moment correlation coefficient, because the latter would be very susceptible to even a single walker

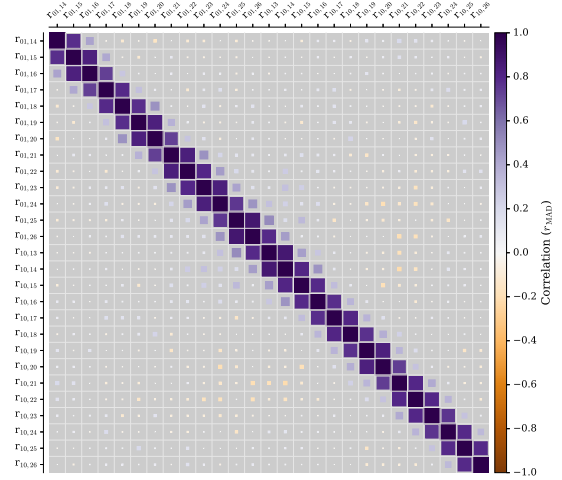


Figure 6. Hinton diagram showing the correlations between frequency difference ratios $r_{01,10}(n)$ of different radial order n for the star KIC 6106415 (Perky). The size and color are proportional to the correlation r_{MAD} .

in the MCMC optimization straying away from the stationary solution. The r_{MAD} between two parameters x and y was calculated as follows:

$$r_{\text{MAD}} = \frac{\text{MAD}^2(u) - \text{MAD}^2(v)}{\text{MAD}^2(u) + \text{MAD}^2(v)}, \quad (3.21)$$

where u and v are the robust principle variables for x and y :

$$u = \frac{x - \text{med}(x)}{\sqrt{2} \text{MAD}(x)} + \frac{y - \text{med}(y)}{\sqrt{2} \text{MAD}(y)}, \quad (3.22)$$

$$v = \frac{x - \text{med}(x)}{\sqrt{2} \text{MAD}(x)} - \frac{y - \text{med}(y)}{\sqrt{2} \text{MAD}(y)}. \quad (3.23)$$

Figure 6 gives an example of the correlation matrix between the $r_{01,10}$ frequency ratios for a given star in the form of a Hinton diagram (Hinton et al. 1986).

4. RESULTS

Below we present some of the conclusions that can be drawn on the different parameters extracted from the peak-bagging. Results on the rotational splittings and inclination angles will be presented in a separate paper. All results will be made available on the KASOC database².

4.1. Mode frequencies

4.1.1. Frequency uncertainties

A proper understanding of the uncertainties on mode frequencies is important, because they will ultimately limit the precision with which stellar parameters can be estimated from modeling the individual frequencies. We may compare the frequency uncertainties from the peak-bagging with expectations from an analytical maximum likelihood (ML) approach (see, e.g., Libbrecht 1992; Toutain & Appourchaux 1994; Ballot et al. 2008). It should be noted that the ML estimator (if unbiased) reaches the *minimum variance bound*, in accordance with the Cramér-Rao theorem (Cramér 1946; Rao 1945). Thus one should expect uncertainties at least as large as those from the ML estimator (MLE). The standard way

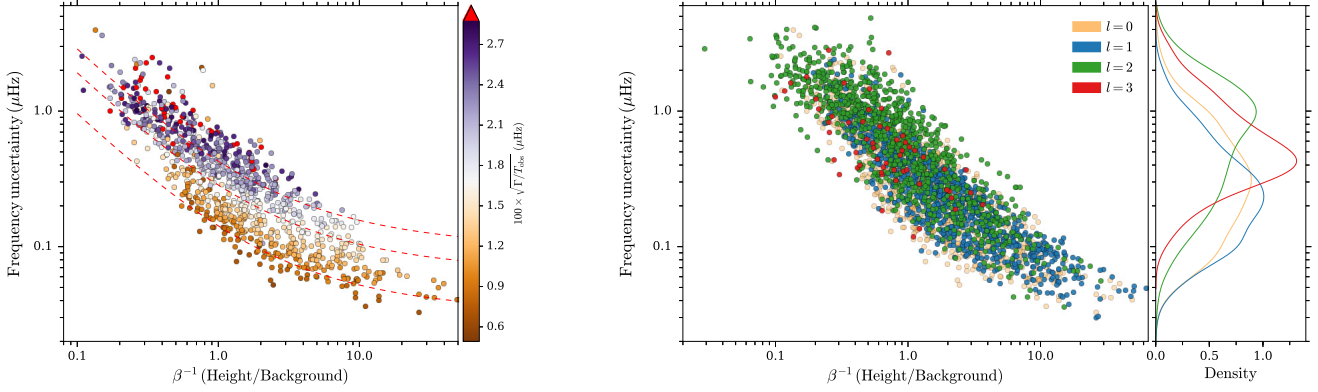


Figure 7. Left: Frequency uncertainties as a function of the height-to-background ratio (β^{-1}) for the radial modes ($l = 0$). The color scale indicate the value of $\sqrt{\Gamma/T_{\text{obs}}}$ which, for a given value of β , is expected to define the spread in the uncertainties (Equation 4.1). Dashed red lines show the behavior of the β -dependent factor $\sqrt{f_0(\beta)}$ (Equation 4.2) for the values 0.009, 0.018, and 0.027 of $\sqrt{\Gamma/T_{\text{obs}}}$. The $\sqrt{f_0(\beta)}$ lines nicely follow the points of a given $\sqrt{\Gamma/T_{\text{obs}}}$, showing that the uncertainties behave as expected from an analytical approach (Section 4.1.1). Right: Uncertainties for all mode frequencies extracted from the peak-bagging. The color indicates the angular degree l of the modes. The small right panel gives the Gaussian kernel density estimates of the uncertainties for each l .

of obtaining uncertainties on a ML estimator is from inverting the negative Hessian matrix, and therefore the standard parameters come from the diagonal elements of the resulting variance-covariance matrix. The Hessian itself is obtained from the matrix of second derivatives of the log-likelihood function with respect to the parameters. Assuming an isolated mode as described by Equation 3.1 and a likelihood function as given in Equation 3.9, one may follow Libbrecht (1992) and Toutain & Appourchaux (1994) in defining a theoretical Hessian corresponding to the average of a large number of realizations. From this, the predicted frequency uncertainty for an isolated mode of a given l is given as (Ballot et al. 2008):

$$\sigma_{\nu_{nl}} = \sqrt{\frac{1}{4\pi} \frac{\Gamma_{nl}}{T_{\text{obs}}} f_l(\beta, x_s, i_\star)}, \quad (4.1)$$

where $\beta = B/H$ (the noise-to-signal ratio) is the level of the background divided by the mode height; i_\star gives the stellar inclination; x_s is the reduced splitting, given by $x_s = 2\nu_s/\Gamma$; and T_{obs} is the observing duration. For radial modes ($l = 0$) the factor f_l only depends on β and is given by (Libbrecht 1992):

$$f_0(\beta) = \sqrt{\beta + 1} \left(\sqrt{\beta + 1} + \sqrt{\beta} \right)^3. \quad (4.2)$$

For the general version of $f_l(\beta, x_s, i_\star)$, see Ballot et al. (2008).

In Figure 7 we show the individual frequency uncertainties obtained from the peak-bagging as a function of β^{-1} , i.e., the signal-to-noise ratio of the mode. The left panel shows the behavior for the radial ($l = 0$) modes. We see that the uncertainties for a given value of $\sqrt{\Gamma/T_{\text{obs}}}$ depend on β as expected from Equation 4.2, and for a given β a clear dependence is seen as a function of $\sqrt{\Gamma/T_{\text{obs}}}$. Given the relatively small spread in T_{obs} , the vertical gradient largely depicts the gradient in Γ and, as expected, the largest values of $\sqrt{\Gamma/T_{\text{obs}}}$ are seen towards low β^{-1} values because of the correlation between Γ and mode heights. Comparing with Equation 4.1, we find that the median uncertainties from our MCMC peak-bagging are ~ 1.2 times larger than those predicted from the ML estimator.

The right panel of Figure 7 shows the uncertainties for all extracted modes. The uncertainties for each angular degree again follow the expected trend against β . Some extra scatter is expected from i_\star and x_s , but overall the $l > 0$ modes are seen to follow the trend of the $l = 0$ ones. The kernel density estimates of the uncertainties for a given l , obtained by representing each sample with a Gaussian kernel, show that the uncertainties of dipole ($l = 1$) modes are overall the lowest, followed by $l = 0$ and $l = 2$. This is expected because $\tilde{V}_1^2 > \tilde{V}_0^2 > \tilde{V}_2^2$ (Equation 3.2), hence $l = 1$ modes will typically have the highest S/N. The $l = 3$ are seen not to follow this trend, probably because only the very highest amplitude $l = 3$ were selected for fitting.

It is reassuring to see that the measured uncertainties follow expectations to this level, also considering that Equation 4.1 is constructed for an isolated mode without factoring in potential contributions from close-by neighboring modes. We note that the demonstration of the agreement is useful for predicting uncertainty yields for future missions like TESS (Ricker et al. 2014) and PLATO (Rauer et al. 2013), and could potentially be used to adjust uncertainties derived from a much faster MLE fitting (see, e.g., Appourchaux et al. 2012a) in cases where the sheer number of stars investigated would render the relatively slow MCMC approach impractical.

4.1.2. Average seismic parameters

For each star we computed the average seismic parameters, including ν_{max} and $\Delta\nu$, from the mode frequencies (see Table 2). The value of ν_{max} was obtained by fitting a Gaussian function to the extracted amplitudes as a function of frequency. The value found for the solar ν_{max} of $3078 \pm 13 \mu\text{Hz}$ is in agreement with the value of $\nu_{\text{max},\odot} = 3090 \pm 30 \mu\text{Hz}$ by Huber et al. (2011). We obtained $\Delta\nu$ and ϵ from a fit to the extracted mode frequencies with an extended version of the asymptotic relation, as in Lund et al. (2014a) (see also Mosser et al. 2011, 2013). This fit was made in a Bayesian manner using *emcee*, with a likelihood function assuming Gaussian frequency errors, and with final parameter values and uncertainties given by the posterior medians and HPDs.

Table 2

Values from the fit of Equation 4.4 to the mode frequencies (see Figure 8). Note that ν_{\max} is obtained from the fit to the extracted modes. Plots of the fitted parameters are shown in Figures 9 to 12; the values for ϵ are shown in Figure 3.

KIC	ν_{\max} (μHz)	$\Delta\nu$ (μHz)	$d\Delta\nu/dn$	ϵ	$\delta\nu_0$ (μHz)	$d\delta\nu_0/dn$	$\delta\nu_2$ (μHz)	$d\delta\nu_2/dn$
1435467	1406.7 ^{+6.3} _{-8.4}	70.369 ^{+0.034} _{-0.033}	0.223 ^{+0.010} _{-0.009}	1.114 ^{+0.009} _{-0.009}	2.907 ^{+0.125} _{-0.125}	-0.126 ^{+0.020} _{-0.021}	5.682 ^{+0.252} _{-0.233}	-0.116 ^{+0.040} _{-0.040}
2837475	1557.6 ^{+8.2} _{-9.2}	75.729 ^{+0.041} _{-0.042}	0.179 ^{+0.012} _{-0.012}	0.911 ^{+0.011} _{-0.011}	2.235 ^{+0.177} _{-0.188}	-0.017 ^{+0.028} _{-0.028}	6.417 ^{+0.408} _{-0.392}	-0.126 ^{+0.049} _{-0.048}
3427720	2737.0 ^{+10.7} _{-17.7}	120.068 ^{+0.031} _{-0.032}	0.287 ^{+0.006} _{-0.008}	1.356 ^{+0.006} _{-0.006}	3.487 ^{+0.079} _{-0.080}	-0.053 ^{+0.014} _{-0.014}	10.186 ^{+0.100} _{-0.112}	-0.124 ^{+0.022} _{-0.022}
3456181	970.0 ^{+8.3} _{-5.9}	52.264 ^{+0.041} _{-0.039}	0.216 ^{+0.011} _{-0.011}	0.988 ^{+0.013} _{-0.014}	3.551 ^{+0.158} _{-0.167}	-0.075 ^{+0.024} _{-0.023}	4.370 ^{+0.251} _{-0.248}	-0.030 ^{+0.043} _{-0.043}
3632418	1166.8 ^{+3.0} _{-3.8}	60.704 ^{+0.019} _{-0.018}	0.232 ^{+0.004} _{-0.004}	1.114 ^{+0.005} _{-0.006}	3.697 ^{+0.064} _{-0.064}	-0.041 ^{+0.009} _{-0.010}	4.189 ^{+0.102} _{-0.115}	-0.053 ^{+0.017} _{-0.019}
3656476	1925.0 ^{+7.0} _{-6.3}	93.194 ^{+0.018} _{-0.020}	0.207 ^{+0.009} _{-0.008}	1.445 ^{+0.004} _{-0.004}	4.608 ^{+0.041} _{-0.042}	-0.095 ^{+0.010} _{-0.011}	4.554 ^{+0.055} _{-0.051}	-0.157 ^{+0.016} _{-0.014}
3735871	2862.6 ^{+16.6} _{-26.5}	123.049 ^{+0.047} _{-0.046}	0.260 ^{+0.019} _{-0.019}	1.325 ^{+0.008} _{-0.008}	3.823 ^{+0.125} _{-0.124}	-0.004 ^{+0.027} _{-0.029}	11.028 ^{+0.202} _{-0.208}	-0.077 ^{+0.047} _{-0.053}
4914923	1817.0 ^{+6.1} _{-5.2}	88.531 ^{+0.019} _{-0.019}	0.233 ^{+0.007} _{-0.008}	1.377 ^{+0.004} _{-0.004}	4.534 ^{+0.048} _{-0.042}	-0.119 ^{+0.009} _{-0.010}	5.378 ^{+0.068} _{-0.074}	-0.118 ^{+0.022} _{-0.021}
5184732	2089.3 ^{+4.4} _{-4.1}	95.545 ^{+0.024} _{-0.023}	0.216 ^{+0.005} _{-0.006}	1.374 ^{+0.005} _{-0.005}	2.772 ^{+0.044} _{-0.047}	-0.104 ^{+0.009} _{-0.009}	5.863 ^{+0.063} _{-0.065}	-0.097 ^{+0.015} _{-0.015}
5773345	1101.2 ^{+5.4} _{-6.6}	57.303 ^{+0.030} _{-0.027}	0.257 ^{+0.007} _{-0.007}	1.077 ^{+0.009} _{-0.010}	1.754 ^{+0.122} _{-0.101}	-0.093 ^{+0.016} _{-0.016}	4.131 ^{+0.261} _{-0.261}	-0.047 ^{+0.046} _{-0.046}
5950854	1926.7 ^{+21.9} _{-20.4}	96.629 ^{+0.102} _{-0.107}	0.208 ^{+0.032} _{-0.029}	1.431 ^{+0.023} _{-0.020}	4.988 ^{+0.215} _{-0.178}	-0.212 ^{+0.038} _{-0.038}	4.713 ^{+0.273} _{-0.235}	-0.232 ^{+0.078} _{-0.074}
6106415	2248.6 ^{+3.9} _{-3.9}	104.074 ^{+0.026} _{-0.026}	0.254 ^{+0.005} _{-0.005}	1.343 ^{+0.049} _{-0.005}	3.422 ^{+0.008} _{-0.047}	-0.114 ^{+0.008} _{-0.008}	6.881 ^{+0.066} _{-0.070}	-0.118 ^{+0.014} _{-0.013}
6116048	2126.9 ^{+5.5} _{-5.0}	100.754 ^{+0.017} _{-0.017}	0.258 ^{+0.005} _{-0.003}	1.336 ^{+0.003} _{-0.003}	3.687 ^{+0.048} _{-0.052}	-0.143 ^{+0.009} _{-0.009}	6.034 ^{+0.068} _{-0.070}	-0.155 ^{+0.014} _{-0.016}
6225718	2364.2 ^{+4.9} _{-4.6}	105.695 ^{+0.018} _{-0.017}	0.274 ^{+0.005} _{-0.005}	1.225 ^{+0.004} _{-0.004}	3.207 ^{+0.061} _{-0.060}	-0.053 ^{+0.011} _{-0.010}	8.741 ^{+0.085} _{-0.088}	-0.062 ^{+0.016} _{-0.016}
6508366	958.3 ^{+4.6} _{-3.6}	51.553 ^{+0.046} _{-0.047}	0.223 ^{+0.009} _{-0.009}	1.006 ^{+0.017} _{-0.017}	2.880 ^{+0.132} _{-0.138}	-0.088 ^{+0.019} _{-0.019}	2.535 ^{+0.205} _{-0.199}	-0.108 ^{+0.030} _{-0.028}
6603624	2384.0 ^{+5.4} _{-5.6}	110.128 ^{+0.012} _{-0.012}	0.201 ^{+0.004} _{-0.004}	1.492 ^{+0.002} _{-0.002}	2.801 ^{+0.029} _{-0.027}	-0.159 ^{+0.006} _{-0.006}	4.944 ^{+0.031} _{-0.034}	-0.201 ^{+0.008} _{-0.008}
6679371	941.8 ^{+5.1} _{-5.0}	50.601 ^{+0.029} _{-0.029}	0.181 ^{+0.008} _{-0.007}	0.880 ^{+0.011} _{-0.010}	2.861 ^{+0.123} _{-0.116}	-0.016 ^{+0.016} _{-0.016}	3.143 ^{+0.266} _{-0.264}	0.044 ^{+0.034} _{-0.034}
6933899	1389.9 ^{+3.9} _{-3.6}	72.135 ^{+0.018} _{-0.018}	0.255 ^{+0.005} _{-0.005}	1.319 ^{+0.004} _{-0.005}	5.314 ^{+0.042} _{-0.041}	0.013 ^{+0.008} _{-0.009}	4.910 ^{+0.054} _{-0.054}	-0.063 ^{+0.014} _{-0.015}
7103006	1167.9 ^{+7.2} _{-9.9}	59.658 ^{+0.029} _{-0.030}	0.211 ^{+0.007} _{-0.008}	0.978 ^{+0.010} _{-0.009}	2.504 ^{+0.140} _{-0.107}	-0.045 ^{+0.019} _{-0.018}	4.471 ^{+0.354} _{-0.295}	0.031 ^{+0.045} _{-0.048}
7106245	2397.9 ^{+24.0} _{-28.7}	111.376 ^{+0.063} _{-0.061}	0.246 ^{+0.025} _{-0.032}	1.392 ^{+0.011} _{-0.012}	3.489 ^{+0.110} _{-0.118}	-0.113 ^{+0.032} _{-0.031}	6.529 ^{+0.189} _{-0.167}	-0.265 ^{+0.069} _{-0.068}
7206837	1652.5 ^{+10.6} _{-11.7}	79.131 ^{+0.037} _{-0.039}	0.253 ^{+0.011} _{-0.011}	1.054 ^{+0.011} _{-0.010}	2.106 ^{+0.147} _{-0.147}	-0.054 ^{+0.023} _{-0.023}	6.619 ^{+0.417} _{-0.417}	-0.094 ^{+0.079} _{-0.073}
7296438	1847.8 ^{+8.5} _{-12.6}	88.698 ^{+0.040} _{-0.040}	0.242 ^{+0.015} _{-0.015}	1.358 ^{+0.009} _{-0.008}	4.505 ^{+0.073} _{-0.081}	-0.055 ^{+0.020} _{-0.022}	5.079 ^{+0.088} _{-0.098}	-0.135 ^{+0.029} _{-0.028}
7510397	1189.1 ^{+3.4} _{-4.4}	62.249 ^{+0.020} _{-0.020}	0.258 ^{+0.004} _{-0.004}	1.112 ^{+0.006} _{-0.006}	3.971 ^{+0.072} _{-0.059}	0.003 ^{+0.009} _{-0.009}	4.370 ^{+0.086} _{-0.086}	-0.016 ^{+0.015} _{-0.017}
7680114	1709.1 ^{+7.1} _{-6.5}	85.145 ^{+0.039} _{-0.043}	0.238 ^{+0.007} _{-0.007}	1.368 ^{+0.010} _{-0.009}	5.039 ^{+0.050} _{-0.054}	-0.043 ^{+0.011} _{-0.011}	4.980 ^{+0.074} _{-0.072}	-0.108 ^{+0.016} _{-0.016}
7771282	1465.1 ^{+27.0} _{-18.7}	72.463 ^{+0.069} _{-0.079}	0.368 ^{+0.042} _{-0.039}	1.117 ^{+0.021} _{-0.019}	3.527 ^{+0.241} _{-0.238}	-0.118 ^{+0.049} _{-0.050}	5.058 ^{+0.484} _{-0.445}	-0.020 ^{+0.089} _{-0.104}
7871531	3455.9 ^{+19.3} _{-26.5}	151.329 ^{+0.025} _{-0.023}	0.285 ^{+0.009} _{-0.008}	1.504 ^{+0.003} _{-0.004}	2.142 ^{+0.071} _{-0.068}	-0.149 ^{+0.013} _{-0.014}	7.350 ^{+0.155} _{-0.169}	-0.143 ^{+0.044} _{-0.049}
7940546	1116.6 ^{+3.3} _{-3.6}	58.762 ^{+0.029} _{-0.029}	0.217 ^{+0.004} _{-0.005}	1.075 ^{+0.009} _{-0.009}	3.985 ^{+0.072} _{-0.071}	-0.002 ^{+0.011} _{-0.011}	4.346 ^{+0.133} _{-0.123}	0.012 ^{+0.019} _{-0.019}
7970740	4197.4 ^{+21.2} _{-18.4}	173.541 ^{+0.065} _{-0.068}	0.272 ^{+0.005} _{-0.005}	1.455 ^{+0.003} _{-0.008}	2.356 ^{+0.083} _{-0.084}	-0.097 ^{+0.011} _{-0.010}	7.901 ^{+0.125} _{-0.165}	-0.268 ^{+0.025} _{-0.026}
8006161	3574.7 ^{+11.4} _{-10.5}	149.427 ^{+0.015} _{-0.014}	0.195 ^{+0.005} _{-0.005}	1.547 ^{+0.002} _{-0.002}	3.061 ^{+0.041} _{-0.046}	-0.084 ^{+0.008} _{-0.007}	9.680 ^{+0.070} _{-0.063}	-0.150 ^{+0.012} _{-0.012}
8150065	1876.9 ^{+38.1} _{-32.4}	89.264 ^{+0.138} _{-0.121}	0.403 ^{+0.048} _{-0.047}	1.163 ^{+0.029} _{-0.030}	3.027 ^{+0.198} _{-0.203}	0.036 ^{+0.034} _{-0.063}	6.357 ^{+0.342} _{-0.348}	0.012 ^{+0.138} _{-0.138}
8179536	2074.9 ^{+13.8} _{-12.0}	95.090 ^{+0.058} _{-0.054}	0.277 ^{+0.019} _{-0.019}	1.153 ^{+0.012} _{-0.013}	3.137 ^{+0.171} _{-0.164}	-0.082 ^{+0.034} _{-0.032}	8.245 ^{+0.352} _{-0.315}	-0.041 ^{+0.073} _{-0.070}
8228742	1190.5 ^{+3.4} _{-3.7}	62.071 ^{+0.022} _{-0.021}	0.244 ^{+0.005} _{-0.005}	1.158 ^{+0.006} _{-0.007}	4.371 ^{+0.057} _{-0.061}	0.007 ^{+0.010} _{-0.010}	4.517 ^{+0.082} _{-0.082}	-0.048 ^{+0.019} _{-0.019}
8379927	2795.3 ^{+6.0} _{-5.7}	120.288 ^{+0.017} _{-0.018}	0.232 ^{+0.005} _{-0.005}	1.311 ^{+0.003} _{-0.003}	3.676 ^{+0.062} _{-0.062}	-0.058 ^{+0.011} _{-0.011}	10.932 ^{+0.096} _{-0.083}	-0.032 ^{+0.022} _{-0.020}
8394589	2396.7 ^{+10.5} _{-9.4}	109.488 ^{+0.034} _{-0.031}	0.234 ^{+0.011} _{-0.011}	1.267 ^{+0.006} _{-0.007}	3.382 ^{+0.089} _{-0.091}	-0.061 ^{+0.022} _{-0.021}	7.979 ^{+0.164} _{-0.161}	-0.106 ^{+0.045} _{-0.045}
8424992	2533.7 ^{+27.0} _{-28.1}	120.584 ^{+0.062} _{-0.064}	0.120 ^{+0.035} _{-0.038}	1.517 ^{+0.012} _{-0.010}	2.678 ^{+0.100} _{-0.103}	-0.179 ^{+0.033} _{-0.032}	5.190 ^{+0.122} _{-0.143}	-0.282 ^{+0.046} _{-0.055}
8694723	1470.5 ^{+3.7} _{-4.1}	75.112 ^{+0.019} _{-0.021}	0.296 ^{+0.005} _{-0.005}	1.113 ^{+0.005} _{-0.005}	5.339 ^{+0.068} _{-0.067}	0.005 ^{+0.010} _{-0.009}	5.879 ^{+0.111} _{-0.108}	0.012 ^{+0.020} _{-0.021}
8760414	2455.3 ^{+9.1} _{-8.3}	117.230 ^{+0.022} _{-0.018}	0.295 ^{+0.007} _{-0.007}	1.400 ^{+0.005} _{-0.004}	4.403 ^{+0.045} _{-0.053}	-0.280 ^{+0.009} _{-0.012}	5.132 ^{+0.063} _{-0.059}	-0.291 ^{+0.014} _{-0.015}
8938364	1675.1 ^{+5.2} _{-5.8}	85.684 ^{+0.018} _{-0.020}	0.235 ^{+0.007} _{-0.006}	1.444 ^{+0.004} _{-0.004}	6.491 ^{+0.044} _{-0.035}	-0.046 ^{+0.010} _{-0.009}	5.184 ^{+0.048} _{-0.052}	-0.119 ^{+0.013} _{-0.014}
9025370	2988.6 ^{+20.0} _{-16.9}	132.628 ^{+0.036} _{-0.024}	0.205 ^{+0.015} _{-0.015}	1.475 ^{+0.005} _{-0.005}	3.099 ^{+0.018} _{-0.062}	-0.066 ^{+0.017} _{-0.017}	9.141 ^{+0.113} _{-0.119}	-0.126 ^{+0.030} _{-0.030}
9098294	2314.7 ^{+9.2} _{-10.4}	108.894 ^{+0.023} _{-0.022}	0.251 ^{+0.009} _{-0.005}	1.439 ^{+0.004} _{-0.005}	3.331 ^{+0.053} _{-0.057}	-0.185 ^{+0.012} _{-0.011}	5.265 ^{+0.086} _{-0.088}	-0.228 ^{+0.024} _{-0.025}
9139151	2690.4 ^{+14.5} _{-9.0}	117.294 ^{+0.031} _{-0.032}	0.240 ^{+0.011} _{-0.011}	1.337 ^{+0.006} _{-0.006}	3.557 ^{+0.083} _{-0.077}	-0.019 ^{+0.017} _{-0.020}	10.050 ^{+0.162} _{-0.158}	-0.093 ^{+0.055} _{-0.057}
9139163	1729.8 ^{+6.2} _{-5.9}	81.170 ^{+0.042} _{-0.036}	0.241 ^{+0.005} _{-0.005}	1.007 ^{+0.010} _{-0.010}	2.079 ^{+0.109} _{-0.098}	-0.024 ^{+0.012} _{-0.010}	6.213 ^{+0.218} _{-0.215}	0.040 ^{+0.026} _{-0.028}
9206432	1866.4 ^{+10.3} _{-14.9}	84.926 ^{+0.046} _{-0.051}	0.135 ^{+0.013} _{-0.013}	0.958 ^{+0.012} _{-0.012}	3.235 ^{+0.207} _{-0.210}	0.001 ^{+0.027} _{-0.031}	7.115 ^{+0.388} _{-0.383}	0.004 ^{+0.055} _{-0.055}
9353712	934.3 ^{+11.1} _{-8.3}	51.467 ^{+0.091} _{-0.104}	0.254 ^{+0.012} _{-0.031}	1.095 ^{+0.038} _{-0.031}	3.536 ^{+0.146} _{-0.159}	-0.038 ^{+0.018} _{-0.018}	3.907 ^{+0.236} _{-0.250}	-0.090 ^{+0.031} _{-0.031}
9410862	2278.8 ^{+31.2} _{-16.6}	107.390 ^{+0.050} _{-0.053}	0.223 ^{+0.020} _{-0.021}	1.343 ^{+0.009} _{-0.010}	3.625 ^{+0.116} _{-0.121}	-0.181 ^{+0.027} _{-0.032}	6.098 ^{+0.201} _{-0.204}	-0.239 ^{+0.081} _{-0.086}
9414417	1155.3 ^{+6.1} _{-4.6}	60.115 ^{+0.026} _{-0.024}	0.237 ^{+0.006} _{-0.007}	1.045 ^{+0.006} _{-0.008}	3.572 ^{+0.106} _{-0.092}	-0.029 ^{+0.015} _{-0.014}	4.648 ^{+0.201} _{-0.200}	-0.006 ^{+0.031} _{-0.030}
9812850	1255.2 ^{+9.1} _{-7.0}	64.746 ^{+0.067} _{-0.068}	0.240 ^{+0.012} _{-0.011}	1.067 ^{+0.021} _{-0.020}	2.654 ^{+0.156} _{-0.166}	-0.134 ^{+0.02}		

We initially adopted the following formula:

$$\begin{aligned} \nu_{nl} \simeq & \left(n + \frac{l}{2} + \epsilon \right) \Delta\nu_0 - l(l+1)D_0 \\ & - l(l+1) \frac{dD_0}{dn} (n - n_{\nu_{\max},l}) \\ & + \frac{d\Delta\nu/dn}{2} (n - n_{\nu_{\max},l})^2. \end{aligned} \quad (4.3)$$

Here $\Delta\nu_0$ gives the value of the large separation at ν_{\max} . The latter corresponds to the radial order $n_{\nu_{\max}}$, which may take on a non-integer value. Specifically, $n_{\nu_{\max},l}$ is obtained for a given l from interpolating the measured mode frequencies (ν_l) against radial order (n_l) to the frequency of ν_{\max} . This description gives a direct estimate of, for instance, the small frequency separations $\delta\nu_{01}$, given as the amount by which $l=1$ modes are offset from the the neighboring $l=0$ modes ($\delta\nu_{01} = (\nu_{n,0} - \nu_{n+1,0})/2 - \nu_{n,1} = 2D_0$), and $\delta\nu_{02} = \nu_{n,l=0} - \nu_{n-1,l=2} = 6D_0$ (see, e.g., [Bedding 2011](#)). The value of $\delta\nu_{02}$ is a good probe of the evolutionary state of the star because it is sensitive to the sound-speed gradient of the core, which in turn varies with the composition. The frequency dependence of these frequency separations is captured by the change in D_0 , assumed to change linearly with n (or frequency), as found, for instance, for the Sun by [Elsworth et al. \(1990\)](#) (see also [Toutain & Fröhlich 1992](#); [Anguera Gubau et al. 1992](#)). Lastly, the change in the large separation, assumed quadratic in n , is included and mimics the overall curvature of the ridges in the échelle diagram.

We found this description to perform poorly across the range of stars in the sample, which is to be expected for more evolved stars (see, e.g., [Gabriel 1989](#); [Christensen-Dalsgaard 1991](#)). To that end we modified the formula as follows:

$$\begin{aligned} \nu_{nl} \simeq & \left(n + \frac{l}{2} + \epsilon \right) \Delta\nu_0 - \delta\nu_{0l} \\ & - \frac{d\delta\nu_{0l}}{dn} (n - n_{\nu_{\max},l}) \\ & + \frac{d\Delta\nu/dn}{2} (n - n_{\nu_{\max},l})^2, \end{aligned} \quad (4.4)$$

where the term $l(l+1)D_0$ has been replaced by $\delta\nu_{0l}$, which takes on independent values for $l > 0$. Thereby we optimize independently for the separations $\delta\nu_{02}$ and $\delta\nu_{01}$. In the fit we also included ν_{\max} with a Gaussian prior from the fit to the mode amplitudes; the values of ν_{\max} , $\Delta\nu$, and ϵ correlate strongly, but we include ν_{\max} to properly marginalize over the uncertainty of the pivoting $n_{\nu_{\max},l}$. Figure 8 gives an example of the fit of Equation 4.4 to KIC 8228742 (Horace). All parameters from the fits are listed in Table 2.

Figure 9 shows the estimated values for $\Delta\nu$ vs. ν_{\max} , together with the empirical relation by [Huber et al. \(2011\)](#), with which we find an excellent agreement. We can even see the expected mass gradient in the residuals, with higher mass stars having slightly lower $\Delta\nu$ for a given ν_{\max} . Also shown is the change in the large separation, which is found to be near-constant at $d\Delta\nu/dn \approx 0.25 \mu\text{Hz}$ and thus always with the same concavity sign, corresponding to a positive gradient of the large separation with frequency. Here one should remember that a constant value of $d\Delta\nu/dn$ against $\Delta\nu_0$ would correspond to a

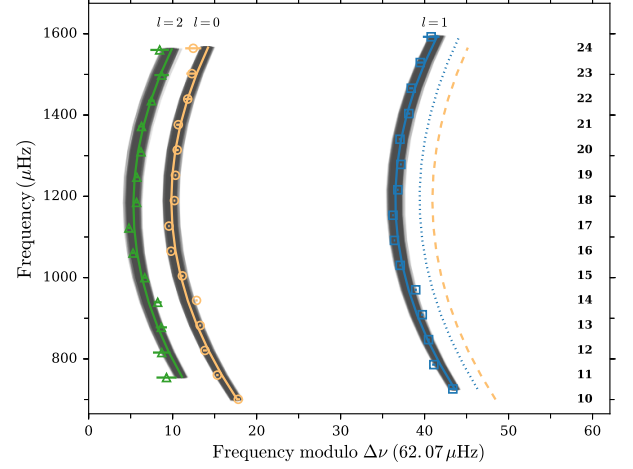


Figure 8. Example of a fit of Equation 4.4 to individual frequencies of KIC 8228742 (Horace), displayed in échelle diagram format. The angular degrees of the ridges are indicated in the top of the plot; the numbers on the right side of the plot give the radial orders n of the radial $l=0$ modes. The full lines give the solution from the median of the posterior distributions of the fit; the dark-grey lines give 500 solutions with parameters drawn from the posterior distributions. The small separation $\delta\nu_{02}$ is given by the difference between the $l=0$ and 2 ridges at ν_{\max} . The dashed line gives the $l=0$ ridge offset by $\Delta\nu/2$, hence $\delta\nu_{01}$ is given by the difference between this line and the $l=1$ ridge at ν_{\max} . The dotted line gives the expected position of the $l=1$ ridge from the asymptotic relation (Equation 3.10), where $\delta\nu_{01} = \delta\nu_{02}/3$. A clear oscillatory behavior from acoustic glitches is seen for the frequencies around the median solution.

linear change in $\Delta\nu$ with frequency.

For the Sun we obtain a value of $\Delta\nu_{\odot}$ of $134.91 \pm 0.02 \mu\text{Hz}$; comparing this to the value of $\Delta\nu_{\odot} = 135.1 \pm 0.1 \mu\text{Hz}$ by [Huber et al. \(2011\)](#) we would expect a slightly smaller value, because the curvature is incorporated in our estimation. However, the value of $\Delta\nu_{\odot} = 134.92 \pm 0.02 \mu\text{Hz}$ by [Toutain & Fröhlich \(1992\)](#), who also used a second-order version of the asymptotic relation, compares very well to our estimate.

The estimated values of ϵ have already been shown in Figure 3. For the estimation of ϵ it should be noted that this value is strongly anti-correlated with $\Delta\nu$, and a small change in $\Delta\nu$ can thus induce a significant change in ϵ ([White et al. 2011b](#)). This will especially take effect if the estimate of ν_{\max} is off, because ν_{\max} defines the pivoting point for the change in $\delta\nu_{01}$, $\delta\nu_{02}$, and the curvatures. Like [White et al. \(2011b\)](#), we see an offset between the estimated ϵ and those obtained from model tracks, which is ascribed to the effects of the incorrect modeling of the stellar surface layers. In Figure 3 we show the ϵ -tracks adopted from [White et al. \(2011a\)](#), which were computed from evolutionary tracks from the Aarhus STellar Evolution Code (ASTEC; [Christensen-Dalsgaard 2008](#)), neglecting diffusion and core overshoot and with $Z_0 = 0.017$. It should also be noted that the ϵ from models were derived in a slightly different manner than used here, as described by [White et al. \(2011a\)](#). We therefore also estimated the values for $\Delta\nu$ and ϵ using the [White et al. \(2011a\)](#) method, namely from a weighted fit of the asymptotic function in Equation 3.10 to the radial mode frequencies as a function of radial order n , and with weights given by a Gaussian with a FWHM of $0.25 \nu_{\max}$. Comparing the values for $\Delta\nu$ and ϵ from the fit of Equation 3.10 versus Equation 4.4 we only find minor differ-

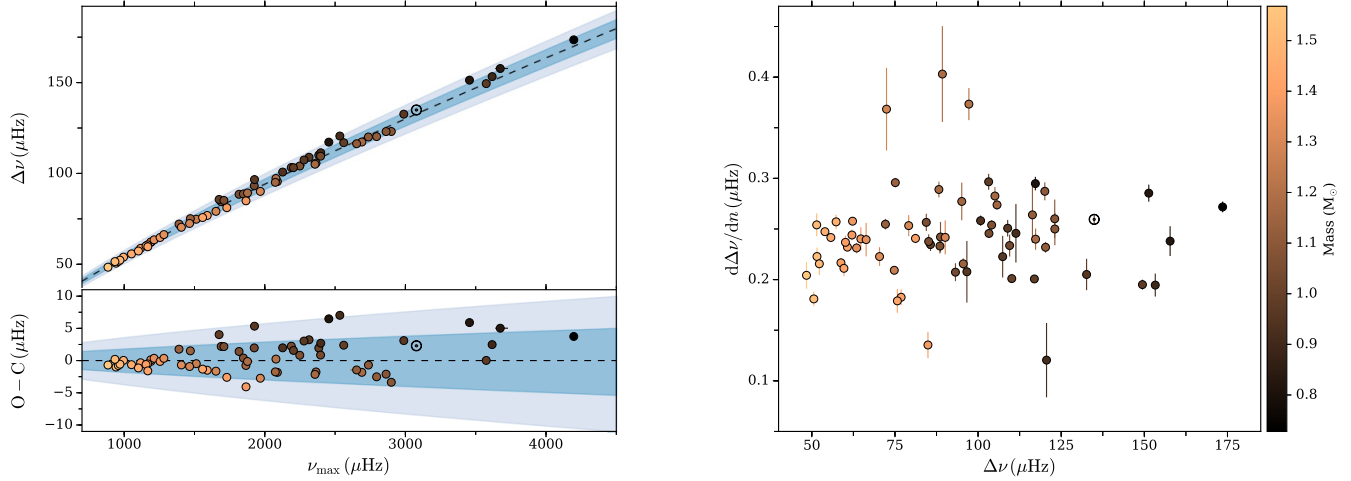


Figure 9. Left: Measured values of $\Delta\nu$ against ν_{max} from fitting of Equation 4.4, with the color indicating the modeled mass. The dashed line shows the empirical relation by Huber et al. (2011), with the 1 and 2 σ uncertainties on the relation given by the dark and light blue regions. From our values we calculate a correlation of $\rho_{\alpha,\beta} = -0.99913$ between the α and β parameters of the Huber et al. (2011) relation — this was included to estimate the uncertainty regions. The bottom panel shows the residuals of the measured values to the relation. Measured values are seen to overall agree well with expectations, with a modest mass gradient across the residuals. Right: Measured gradient of $\Delta\nu$ with radial order, $d\Delta\nu/dn$, defining the overall curvature of the ridges in the échelle diagram against $\Delta\nu$.

ences in estimated values. For $\Delta\nu$ the maximum absolute difference was $\sim 0.36 \mu\text{Hz}$, with no systematic differences; for ϵ a maximum difference of ~ 0.14 was found, and again with no systematic differences.

In Figures 10 and 11 we show the estimated values for the separations $\delta\nu_{01}$ and $\delta\nu_{02}$, together with their gradients in n (or frequency); the results for $\delta\nu_{02}$ in Figure 11 are given in the form of a modified C-D diagram (see Christensen-Dalsgaard 1993; White et al. 2011b,a, 2012). Because all values for the changes in $\delta\nu_{01}$ and $\delta\nu_{02}$ are either zero or negative, we see that the small separations are virtually all decreasing functions of frequency. In Figure 11 we show again the ASTEC tracks from White et al. (2011a). It is interesting to see the degree to which the asymptotic relations to first (Equation 3.10) and second (Equation 4.3) order are satisfied. From these one would expect a ratio of $\delta\nu_{02}/\delta\nu_{01} = 3$ from assuming $\delta\nu_{0l} = l(l+1)D_0$ — in Figure 12 we show this ratio for the sample. As seen, only a few stars, including the Sun, actually adhere to the expectation from the asymptotic relation. This was similarly found by Christensen-Dalsgaard & Houdek (2010)⁷ for α Cen A (Bedding et al. 2004), while α Cen B (Kjeldsen et al. 2005) was found to fulfill the asymptotic relation. As explained by Christensen-Dalsgaard & Houdek (2010) this reflects a rapid variation of the sound speed in the core of α Cen A from its more evolved state due to its higher mass compared to the B component. Similarly, Verma et al. (2014) found an increasing departure from the asymptotic description of the oscillation frequencies while fitting the signatures of the acoustic glitches. The departure becomes noticeable when a peak in the Brunt-Väisälä frequency N develops just outside the stellar core towards the end of the MS and becomes comparable or higher than the lowest frequency fitted. To check this evolutionary explanation, we plot in the right panel of Figure 12 the $\delta\nu_{02}/\delta\nu_{01}$ against the central hydrogen content X_c , because this serves as a good probe for the evo-

lutionary state. As seen, stars with high X_c , i.e., stars that are less evolved, adhere better to the asymptotic regime than the evolved stars with low X_c . The values of X_c were obtained as part of the modeling with the BASTA pipeline; we refer to Paper II for further details. While a difference from a ratio of $\delta\nu_{02}/\delta\nu_{01} = 3$ can be explained from an evolutionary viewpoint, it is interesting to note that the majority of the stars analyzed indeed do not follow the asymptotic relation. This is a cautionary note to the use of Equation 3.10 and/or Equation 4.3 for extracting average seismic parameters as here, or if used for predicting the location of oscillation modes frequencies in the power spectrum from $\Delta\nu_0$ measured in an independent manner. For details on the physics behind the curvatures we refer to Tassoul (1980); Houdek & Gough (2007); Cunha & Metcalfe (2007), and Mosser et al. (2013) and references therein.

4.2. Mode amplitudes

Mode amplitudes were measured in the peak-bagging as described in Section 3.1. Figure 13 displays the radial degree 5-point Epanechnikov (Epanechnikov 1969; Hastie et al. 2009) smoothed amplitudes for all the stars in the sample against frequency (left) and normalized against distance from ν_{max} (right). One clearly sees the overall decrease in amplitude with increasing ν_{max} (Kjeldsen et al. 2005; Arentoft et al. 2008), and thus decreasing T_{eff} (Kjeldsen & Bedding 1995, 2011; Appourchaux et al. 2014a). The value of ν_{max} was estimated from the amplitudes as the frequency where the modes of oscillation show their maximum amplitude, A_{max} .

Figure 14 gives the measured values for A_{max} against ν_{max} (Table 3). We see both the expected change with ν_{max} , in addition to a mass gradient across the overall decrease in A_{max} with ν_{max} (Huber et al. 2011). In Figure 14 we also give a comparison to the amplitudes estimated from the scaling relations of Huber et al. (2011):

$$A_{\text{Kp}} = \left(\frac{L}{L_{\odot}}\right)^s \left(\frac{M}{M_{\odot}}\right)^{-t} \left(\frac{T_{\text{eff}}}{T_{\text{eff},\odot}}\right)^{1-r} \frac{A_{\text{bol},\odot}}{c_{\text{K}}(T_{\text{eff}})}, \quad (4.5)$$

⁷ expressed in the units $D_{n0}^{(1)} = \delta\nu_{01}$ and $D_{n0} = \delta\nu_{02}/3$.

Table 3

Values for the line width at ν_{\max} (Figure 20) from the fit of Equation 4.7; A_{\max} gives the mode amplitude at ν_{\max} from a fit to the individual mode amplitudes against frequency; $A_{\max, \text{smo}} (c = 3.04)$ and $A_{\max, \text{smo}} (c = \tilde{\nu}_{\text{tot}}^2)$ give the amplitudes from the smoothing method by Kjeldsen et al. (2008b) (Figure 15), with different values for the effective number of modes per radial order c ; α , Γ_{α} , $\Delta\Gamma_{\text{dip}}$, W_{dip} , and ν_{dip} give the obtained parameters from the fit of Equation 4.7. The values of $\Delta\Gamma_{\text{dip}}$ and W_{dip} are only given if the inclusion of the Lorentzian in Equation 4.7 gave a better fit than the power law only fit. FWHM_{dip} gives the full-width-half-maximum of the Lorentzian line width dip.

KIC	Γ @ ν_{\max} (μHz)	A_{\max} (ppm)	$A_{\max, \text{smo}} (c = 3.04)$ (ppm)	$A_{\max, \text{smo}} (c = \tilde{\nu}_{\text{tot}}^2)$ (ppm)	α	Γ_{α} (μHz)	$\Delta\Gamma_{\text{dip}}$ (μHz)	W_{dip} (μHz)	ν_{dip} (μHz)	FWHM_{dip} (μHz)
1435467	5.18 ± 0.17	$4.37^{+0.10}_{-0.07}$	4.30	4.25	$0.54^{+0.21}_{-0.22}$	5.19 ± 0.18				
2837475	6.39 ± 0.2	$3.87^{+0.06}_{-0.05}$	3.67	3.71	$0.91^{+0.19}_{-0.19}$	6.42 ± 0.21				
3427720	1.88 ± 0.15	$2.62^{+0.04}_{-0.07}$	2.55	2.38	$2.49^{+0.80}_{-0.96}$	5.0 ± 2.96	$0.36^{+0.13}_{-0.26}$	4428^{+605}_{-1660}	2695^{+126}_{-100}	1309 ± 711
3456181	4.07 ± 0.19	$5.60^{+0.14}_{-0.14}$	5.92	5.48	$1.11^{+0.27}_{-0.26}$	4.06 ± 0.2				
3632418	2.72 ± 0.16	$5.04^{+0.06}_{-0.07}$	5.04	4.76	$1.76^{+0.18}_{-0.22}$	4.67 ± 0.71	$0.56^{+0.09}_{-0.07}$	1698^{+210}_{-304}	1188^{+26}_{-34}	448 ± 183
3656476	0.69 ± 0.01	$4.70^{+0.13}_{-0.13}$	4.13	4.12	$2.50^{+0.13}_{-0.10}$	0.69 ± 0.01				
3735871	2.25 ± 0.25	$2.52^{+0.08}_{-0.07}$	2.38	2.30	$2.79^{+1.18}_{-1.24}$	7.34 ± 4.29	$0.28^{+0.10}_{-0.18}$	4717^{+798}_{-1110}	2825^{+148}_{-167}	1426 ± 595
4914923	1.16 ± 0.08	$4.62^{+0.12}_{-0.08}$	4.19	4.15	$3.52^{+0.48}_{-0.57}$	6.2 ± 2.4	$0.18^{+0.07}_{-0.07}$	2600^{+201}_{-270}	1847^{+24}_{-25}	666 ± 170
5184732	1.36 ± 0.06	$4.08^{+0.06}_{-0.06}$	3.84	3.88	$3.52^{+0.38}_{-0.41}$	7.65 ± 2.61	$0.17^{+0.06}_{-0.06}$	3247^{+243}_{-305}	2117^{+26}_{-28}	941 ± 184
5773345	3.37 ± 0.13	$5.69^{+0.13}_{-0.11}$	5.17	5.52	$0.58^{+0.26}_{-0.23}$	3.37 ± 0.14				
5950854	0.83 ± 0.01	$4.12^{+0.37}_{-0.27}$	3.77	3.87	$0.56^{+0.03}_{-0.03}$	0.83 ± 0.01				
6106415	1.64 ± 0.07	$3.86^{+0.06}_{-0.04}$	3.60	3.63	$3.49^{+0.25}_{-0.25}$	5.53 ± 1.08	$0.29^{+0.06}_{-0.05}$	3242^{+201}_{-265}	2274^{+23}_{-26}	837 ± 166
6116048	1.62 ± 0.09	$4.02^{+0.06}_{-0.06}$	3.75	3.67	$3.26^{+0.32}_{-0.28}$	5.74 ± 1.35	$0.28^{+0.06}_{-0.06}$	3102^{+207}_{-319}	2098^{+27}_{-28}	796 ± 182
6225718	2.58 ± 0.12	$3.53^{+0.04}_{-0.03}$	3.39	3.29	$2.32^{+0.24}_{-0.22}$	5.77 ± 0.67	$0.43^{+0.05}_{-0.05}$	3076^{+159}_{-180}	2316^{+26}_{-23}	611 ± 121
6508366	5.22 ± 0.17	$5.02^{+0.09}_{-0.07}$	5.21	4.75	$1.95^{+0.13}_{-0.12}$	5.21 ± 0.15				
6603624	0.56 ± 0.02	$4.15^{+0.10}_{-0.07}$	3.55	3.58	$4.42^{+0.19}_{-0.24}$	0.57 ± 0.02				
6679371	4.53 ± 0.18	$5.56^{+0.07}_{-0.08}$	5.33	5.28	$0.45^{+0.19}_{-0.45}$	5.51 ± 0.74	$0.69^{+0.14}_{-0.16}$	1339^{+209}_{-389}	833^{+44}_{-48}	295 ± 190
6933899	1.3 ± 0.07	$5.55^{+0.09}_{-0.10}$	5.07	4.94	$3.15^{+0.56}_{-0.69}$	6.0 ± 2.75	$0.21^{+0.08}_{-0.11}$	2218^{+233}_{-304}	1422^{+30}_{-33}	671 ± 178
7103006	5.09 ± 0.16	$4.74^{+0.11}_{-0.09}$	4.29	4.58	$1.17^{+0.18}_{-0.18}$	5.09 ± 0.17				
7106245	1.65 ± 0.14	$3.39^{+0.11}_{-0.15}$	2.96	2.91	$1.71^{+0.93}_{-0.97}$	1.64 ± 0.14				
7206837	4.34 ± 0.32	$4.32^{+0.10}_{-0.06}$	3.85	4.18	$0.75^{+0.36}_{-0.62}$	8.25 ± 2.83	$0.50^{+0.16}_{-0.21}$	2854^{+545}_{-830}	1720^{+92}_{-101}	952 ± 433
7296438	1.22 ± 0.12	$4.59^{+0.20}_{-0.22}$	4.24	4.11	$3.87^{+1.10}_{-1.11}$	8.39 ± 4.56	$0.14^{+0.05}_{-0.08}$	2794^{+272}_{-336}	1835^{+49}_{-48}	764 ± 205
7510397	2.42 ± 0.15	$3.62^{+0.05}_{-0.04}$	3.52	3.40	$1.90^{+0.25}_{-0.31}$	4.18 ± 0.71	$0.55^{+0.11}_{-0.08}$	1663^{+199}_{-270}	1226^{+30}_{-36}	413 ± 176
7680114	1.16 ± 0.09	$4.71^{+0.10}_{-0.10}$	4.40	4.40	$3.70^{+0.66}_{-0.77}$	4.68 ± 1.95	$0.24^{+0.09}_{-0.11}$	2438^{+215}_{-311}	1736^{+32}_{-34}	620 ± 191
7771282	3.29 ± 0.28	$4.20^{+0.12}_{-0.21}$	4.14	3.96	$0.71^{+0.66}_{-0.71}$	3.29 ± 0.29				
7871531	1.21 ± 0.12	$1.91^{+0.09}_{-0.07}$	1.71	1.77	$1.94^{+0.91}_{-1.53}$	4.83 ± 3.18	$0.20^{+0.09}_{-0.15}$	6026^{+967}_{-1405}	3161^{+145}_{-178}	1780 ± 653
7940546	2.92 ± 0.14	$5.29^{+0.07}_{-0.07}$	5.24	5.51	$1.56^{+0.19}_{-0.19}$	5.15 ± 0.69	$0.53^{+0.08}_{-0.06}$	1578^{+137}_{-194}	1177^{+23}_{-23}	409 ± 126
7970740	1.99 ± 0.15	$1.65^{+0.03}_{-0.03}$	1.35	1.51	$4.25^{+0.92}_{-0.72}$	6.85 ± 3.6	$0.26^{+0.10}_{-0.17}$	6875^{+110}_{-1384}	3910^{+151}_{-151}	1949 ± 735
8006161	1.17 ± 0.06	$1.94^{+0.03}_{-0.04}$	1.69	1.73	$4.75^{+0.68}_{-0.62}$	6.0 ± 3.27	$0.19^{+0.06}_{-0.13}$	5581^{+621}_{-861}	3507^{+73}_{-71}	1575 ± 478
8150065	2.37 ± 0.3	$3.55^{+0.25}_{-0.17}$	3.38	3.23	$2.01^{+1.47}_{-1.53}$	2.36 ± 0.28				
8179536	3.51 ± 0.26	$3.42^{+0.09}_{-0.07}$	3.35	3.25	$1.88^{+0.78}_{-0.89}$	7.05 ± 3.12	$0.47^{+0.14}_{-0.30}$	3940^{+1129}_{-194}	2112^{+195}_{-194}	1378 ± 486
8228742	2.05 ± 0.13	$5.30^{+0.08}_{-0.06}$	5.20	4.94	$2.39^{+0.26}_{-0.30}$	4.19 ± 0.68	$0.48^{+0.09}_{-0.07}$	1640^{+127}_{-191}	1189^{+21}_{-26}	383 ± 117
8379927	2.43 ± 0.11	$2.21^{+0.03}_{-0.03}$	2.09	2.05	$2.45^{+0.31}_{-0.27}$	6.12 ± 1.22	$0.39^{+0.08}_{-0.07}$	4091^{+324}_{-435}	2731^{+49}_{-43}	1046 ± 258
8394589	2.15 ± 0.16	$3.49^{+0.08}_{-0.05}$	3.33	3.24	$1.71^{+0.59}_{-0.60}$	5.79 ± 1.69	$0.28^{+0.09}_{-0.08}$	3185^{+231}_{-356}	2233^{+41}_{-34}	637 ± 208
8424992	1.14 ± 0.1	$2.97^{+0.18}_{-0.19}$	2.77	2.67	$2.99^{+1.46}_{-1.42}$	1.14 ± 0.1				
8694723	3.08 ± 0.16	$5.38^{+0.09}_{-0.05}$	5.08	5.07	$1.98^{+0.21}_{-0.20}$	5.42 ± 0.79	$0.56^{+0.09}_{-0.07}$	2129^{+220}_{-323}	1472^{+34}_{-34}	548 ± 192
8760414	1.25 ± 0.08	$3.96^{+0.11}_{-0.06}$	3.49	3.52	$2.97^{+0.77}_{-0.61}$	5.06 ± 2.23	$0.23^{+0.09}_{-0.12}$	3659^{+359}_{-486}	2349^{+52}_{-45}	943 ± 277
8938364	0.8 ± 0.01	$5.22^{+0.12}_{-0.14}$	4.61	4.43	$2.49^{+0.10}_{-0.13}$	0.8 ± 0.01				
9025370	1.39 ± 0.08	$1.64^{+0.04}_{-0.05}$	1.45	1.45	$1.60^{+0.62}_{-0.64}$	1.38 ± 0.09				
9098294	1.3 ± 0.08	$3.55^{+0.09}_{-0.09}$	3.21	3.16	$2.81^{+1.09}_{-1.17}$	7.81 ± 4.74	$0.16^{+0.06}_{-0.10}$	3986^{+517}_{-650}	2317^{+86}_{-95}	1275 ± 355
9139151	1.99 ± 0.14	$2.88^{+0.05}_{-0.06}$	2.72	2.66	$3.03^{+0.71}_{-0.82}$	7.78 ± 3.84	$0.25^{+0.07}_{-0.15}$	4136^{+494}_{-697}	2697^{+72}_{-70}	1169 ± 399
9139163	5.28 ± 0.13	$3.76^{+0.05}_{-0.04}$	3.64	3.81	$1.79^{+0.13}_{-0.14}$	5.28 ± 0.13				
9206432	5.87 ± 0.27	$3.54^{+0.12}_{-0.09}$	3.47	3.48	$0.88^{+0.31}_{-0.29}$	5.88 ± 0.28				
9353712	3.22 ± 0.22	$5.54^{+0.18}_{-0.16}$	5.68	5.46	$1.20^{+0.38}_{-0.36}$	3.2 ± 0.21				
9410862	1.89 ± 0.25	$3.75^{+0.13}_{-0.10}$	3.60	3.67	$2.40^{+0.82}_{-0.81}$	7.2 ± 3.8	$0.24^{+0.07}_{-0.14}$	3337^{+460}_{-769}	2204^{+65}_{-63}	846 ± 414
9414417	3.47 ± 0.23	$5.55^{+0.08}_{-0.10}$	5.18	5.29	$1.04^{+0.30}_{-0.35}$	5.81 ± 1.31	$0.57^{+0.14}_{-0.13}$	1910^{+374}_{-552}	1191^{+56}_{-65}	605 ± 299
9812850	5.68 ± 0.19	$4.61^{+0.11}_{-0.08}$	4.51	4.85	$0.69^{+0.19}_{-0.18}$	5.67 ± 0.2				
9955598	0.77 ± 0.03	$2.07^{+0.06}_{-0.05}$	1.79	1.94	$4.98^{+0.26}_{-0.21}$	0.77 ± 0.01				
9965715	3.14 ± 0.34	$3.89^{+0.07}_{-0.07}$	3.54	3.59	$1.82^{+0.47}_{-0.57}$	5.92 ± 1.9	$0.47^{+0.15}_{-0.16}$	3024^{+687}_{-802}	2103^{+78}_{-84}	792 ± 528
10068307	2.15 ± 0.13	$5.98^{+0.09}_{-0.09}$	5.86	5.54	$2.15^{+0.16}_{-0.18}$	3.91 ± 0.45	$0.53^{+0.07}_{-0.05}$	1388^{+110}_{-165}	1015^{+19}_{-22}	340 ± 102
10079226	2.05 ± 0.35	$2.81^{+0.14}_{-0.15}$	2.63	2.63	$3.36^{+1.49}_{-1.44}$	6.73 ± 4.24	$0.27^{+0.12}_{-0.19}$	4248^{+743}_{-1099}	2601^{+156}_{-165}	1236 ± 585
10162436	3.08 ± 0.08	$5.38^{+0.11}_{-0.09}$	5.40	5.42	$1.82^{+0.16}_{-0.15}$	3.08 ± 0.09				
10454113	4.12 ± 0.15	$3.19^{+0.05}_{-0.04}$	2.87	3.01	$1.60^{+0.26}_{-0.26}$	4.13 ± 0.15				
10516096	1.56 ± 0.1	$4.74^{+0.48}_{-0.11}$	4.40	4.26	$3.44^{+0.48}_{-0.54}$	5.33 ± 2.47	$0.28^{+0.12}_{-0.13}$	2629^{+345}_{-539}	1723^{+38}_{-39}	768 ± 298
10644253	2.21 ± 0.22	$2.22^{+0.06}_{-0.05}$	2.15	2.06	$3.16^{+0.99}_{-1.06}$	11.06 ± 4.51	$0.19^{+0.05}_{-0.09}$	4253^{+364}_{-456}	2852^{+74}_{-69}	1099 ± 282
10730618	5.07 ± 0.25	$4.64^{+0.14}_{-0.13}$	4.24	4.49	$0.41^{+0.39}_{-0.40}$	5.09 ± 0.27				
10963065	2.16 ± 0.11	$3.72^{+0.09}_{-0.05}$	3.62	3.45	$3.36^{+0.54}_{-0.59}$	8.44				

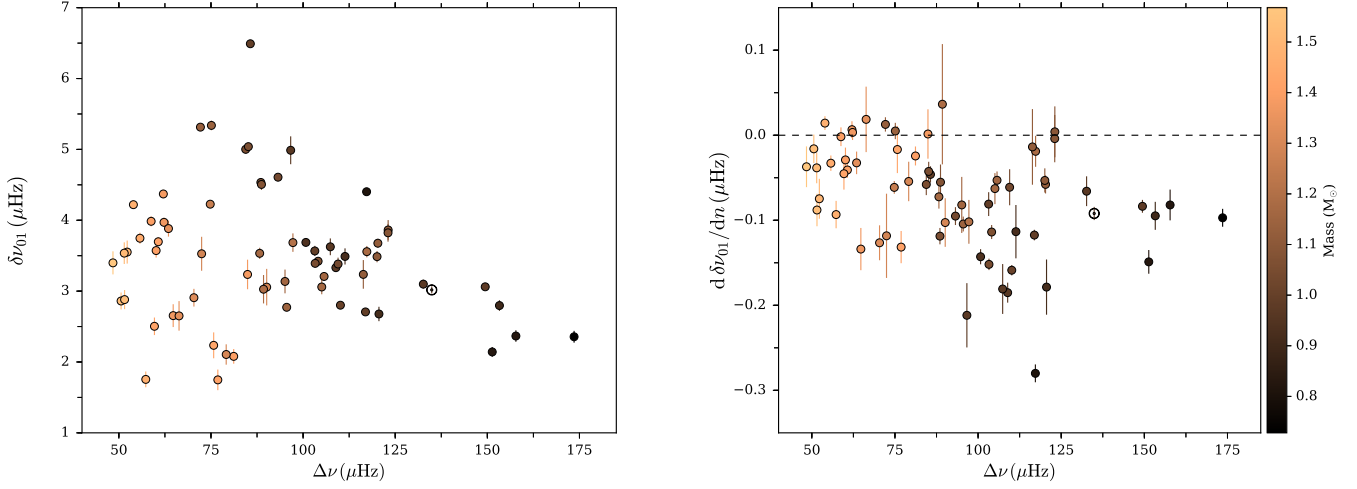


Figure 10. Left: Measured values of $\delta\nu_{01}$ against $\Delta\nu$ from fitting of Equation 4.4, with the color indicating the modeled mass. Right: Measured change in $\delta\nu_{01}$ with radial order, $d\delta\nu_{01}/dn$ against $\Delta\nu$. All slopes in $\delta\nu_{01}$ are seen to be either negative or consistent with zero.

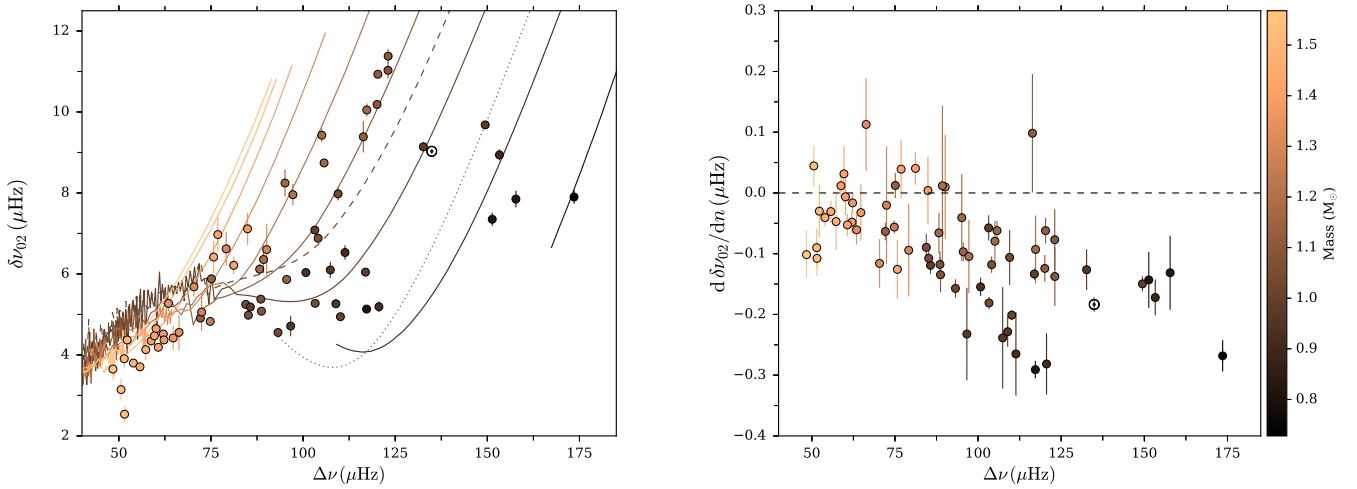


Figure 11. Left: Measured values of $\delta\nu_{02}$ against $\Delta\nu$ from fitting of Equation 4.4, with the color indicating the modeled mass. Shown are also the $\delta\nu_{02}$ -evolutionary tracks from White et al. (2011a), calculated from ASTEC evolutionary tracks with $Z_0 = 0.017$ (Christensen-Dalsgaard 2008), for masses going from $0.8 M_{\odot}$ to $1.6 M_{\odot}$ in steps of $0.1 M_{\odot}$. For the $M = 1 M_{\odot}$ track we have indicated the effect of changing the metallicity to $Z_0 = 0.011$ (dashed) and $Z_0 = 0.028$ (dotted). Right: Measured change in $\delta\nu_{02}$ with radial order, $d\delta\nu_{02}/dn$ against $\Delta\nu$. All slopes in $\delta\nu_{02}$ are seen to be either negative or consistent with zero.

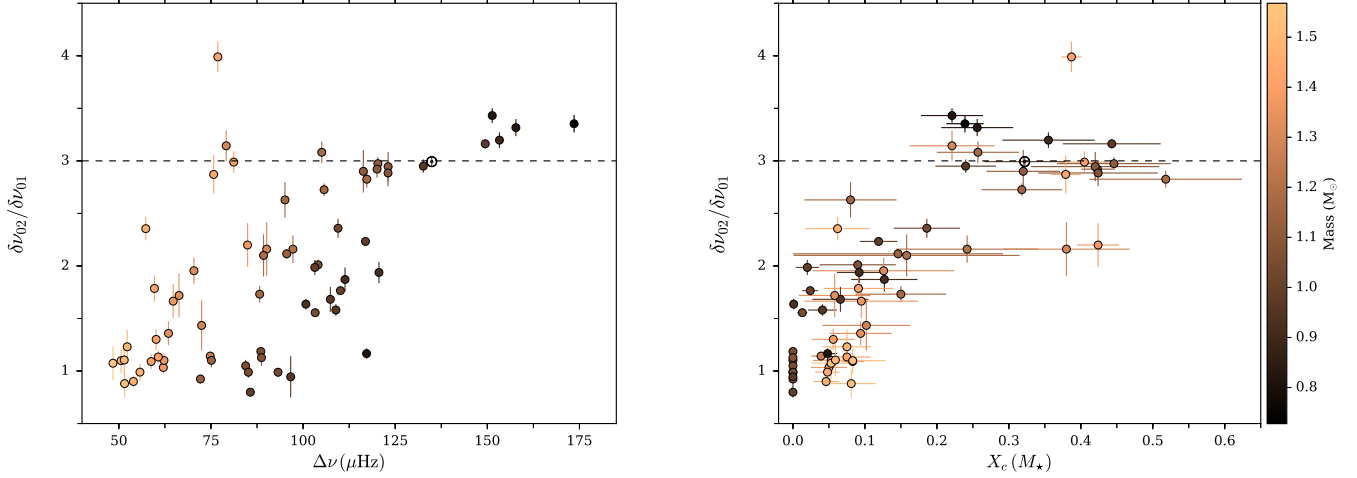


Figure 12. Left: Ratio between measured values of $\delta\nu_{02}$ and $\delta\nu_{01}$ against $\Delta\nu$, with the color indicating the modeled mass. The dashed line indicates the expected value of 3 from the asymptotic relation Equation 3.10 where $\delta\nu_{0l} = l(l+1)D_0$. Right: Ratio plotted against the modeled value for central hydrogen content X_c , which is a good indicator for the evolutionary state. More evolved stars with low X_c are seen to deviate more from the asymptotic expectation than lesser evolved stars.

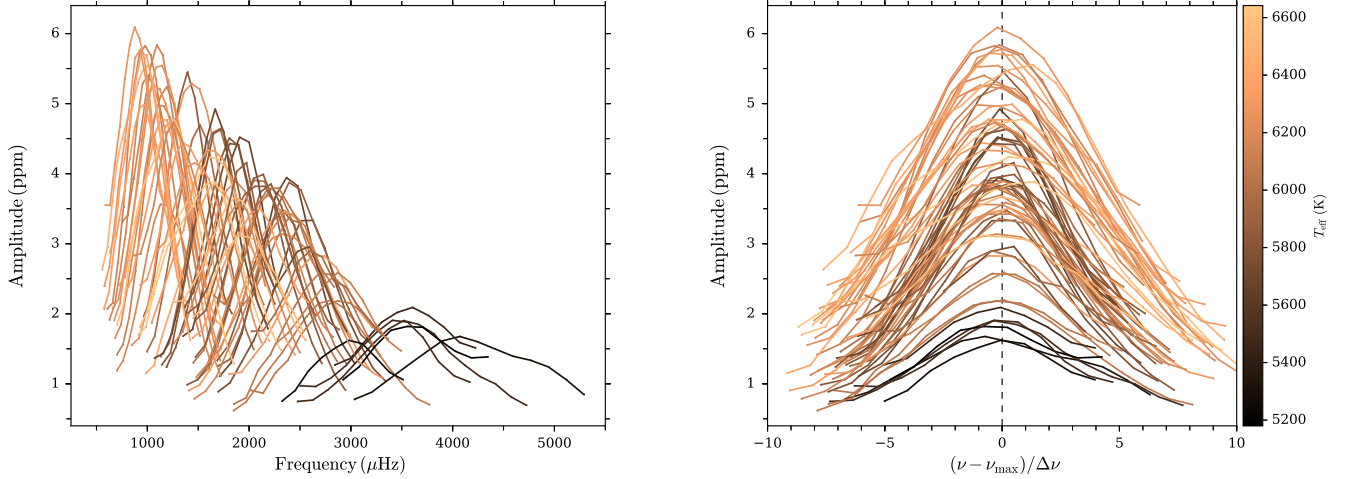


Figure 13. Left: Radial mode amplitude envelopes against frequency, with the colour indicating the T_{eff} . For a better visualization the amplitudes have been smoothed with 5-point Epanechnikov filter. The dashed envelope gives the results obtained for the Sun. Right: Amplitudes centered on ν_{max} and plotted against a proxy for the radial order.

with $t = 1.32 \pm 0.02$, $s = 0.838 \pm 0.002$, and $r = 2$ and Corsaro et al. (2013):

$$A_{\text{Kp}} = \beta \left(\frac{\nu_{\text{max}}}{\nu_{\text{max},\odot}} \right)^{2s-3t} \left(\frac{\Delta\nu}{\Delta\nu_{\odot}} \right)^{4t-4s} \left(\frac{T_{\text{eff}}}{T_{\text{eff},\odot}} \right)^{5s-1.5t-r+0.2} \frac{A_{\text{bol},\odot}}{c_K(T_{\text{eff}})}, \quad (4.6)$$

with $s = 0.748 \pm 0.015$, $t = 1.27 \pm 0.04$, $r = 3.47 \pm 0.09$, and $\ln\beta = 0.321 \pm 0.020$. In converting the bolometric amplitudes from these relations to the *Kepler* band-pass we used the root-mean-square value of $A_{\text{bol},\odot} = 2.53 \pm 0.11$ ppm from Michel et al. (2009) and the temperature dependent bolometric correction $c_K(T_{\text{eff}})$ by Ballot et al. (2011), which is specific to the *Kepler* spectral response function. Overall we see a reasonable agreement with a scatter within approximately 25% as also found by Huber et al. (2011). At low amplitudes the Huber et al. (2011) relation is seen to provide the best agreement, while the Corsaro et al. (2013) relation has an overall lower scatter across the amplitude range. We note that the relations tested here were calibrated against A_{max} values obtained using the method of Kjeldsen et al. (2005,

2008b) and the high ν_{max} range occupied by the stars in the current analysis is sparsely covered in the calibrations of the scaling relations, so a better relationship than observed cannot readily be expected (see more below). In addition, amplitudes will have natural scatter due to the impact of activity (Chaplin et al. 2011b).

4.2.1. Amplitudes from smoothed amplitude spectra

With amplitudes measured from individual modes it is interesting to see how these compare to those obtained from the often adopted method by Kjeldsen et al. (2005, 2008b). This is especially worthwhile because it is often amplitudes from this method that are extracted by automated analysis pipelines (see, e.g., Huber et al. 2009; Hekker et al. 2010; Mathur et al. 2010), and thus used in calibrating scaling relations (see, e.g., Stello et al. 2011; Huber et al. 2011; Corsaro et al. 2013).

Amplitudes were estimated following the prescription of Kjeldsen et al. (2008b). Here the power density spectrum is first convolved with a Gaussian filter with a

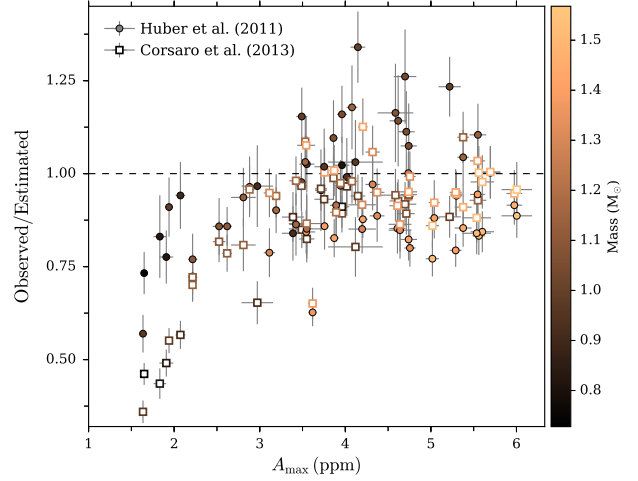
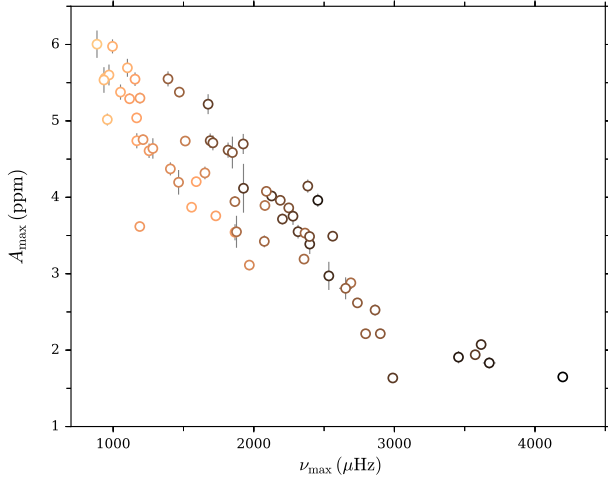


Figure 14. Left: Estimates of radial mode amplitudes at ν_{\max} as a function of ν_{\max} ; the color indicates the modeled mass. The A_{\max} values are obtained from a fit of the individual mode amplitudes against frequency. Right: Fractional differences between observed values of A_{\max} and those estimated by the relations of Huber et al. (2011) and Corsaro et al. (2013).

FWHM of $4\Delta\nu$, to produce a spectrum with a single power hump from the oscillations. A noise background is then fitted to the smoothed spectrum and subtracted, after which the spectrum is multiplied by $\Delta\nu/c$ and the square-root is taken to convert to amplitude. The multiplication of $\Delta\nu/c$ converts to power per radial mode, with c giving the effective number of radial modes per order, i.e., $c \approx \tilde{V}_{\text{tot}}^2$ (see Equation 3.2). Concerning the order of the different steps in the method we subtract instead first the fitted background function from the peak-bagging, and then apply the smoothing — this removes the potential bias on both the amplitude and central frequency of the smoothed power hump from mixing background and oscillation power, and then try to fit the now smoothed underlying background with a non-smoothed background function.

The value of c is often kept fixed rather than estimated for a given star following, for instance, the results by Ballot et al. (2011). Bedding et al. (2010) estimated a value of $c = 3.04$ for the Sun as seen by *Kepler* using the method of Bedding et al. (1996) and Kjeldsen et al. (2008b) and adopting a mean observing wavelength of $\lambda = 650 \text{ nm}$ — this value has since been used by, e.g., Stello et al. (2011), Huber et al. (2011), and Corsaro et al. (2013). In our estimation of amplitudes we tried both the value of $c = 3.04$ and the one obtained from the visibilities measured in the peak-bagging $c = \tilde{V}_{\text{tot}}^2$.

Figure 15 shows the result from this exercise; we find that the A_{\max} values from the above method are systematically offset (fixed bias) from those estimated from individual frequencies, with a median relative offset of -6% ; no proportional bias is seen. This offset could in part originate from the somewhat arbitrary choice of $4\Delta\nu$ for the smoothing window — however, if this was the only contributor one might expect a proportional offset rather than a constant one. The identified offset fully corroborates the results by Verner et al. (2011) who found a systematic offset between -15 and -2% from pipeline analysis of simulated data. We observe the same median offset for the different values of c , but the scatter is slightly lower for the values using c from the measured visibilities. Considering that \tilde{V}_{tot}^2 and thus c depends on

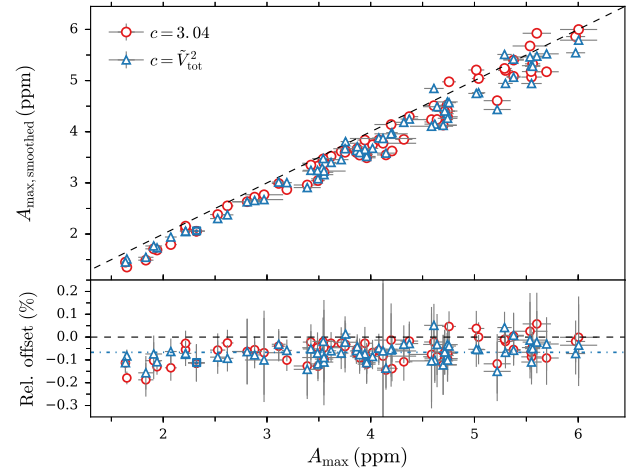


Figure 15. Top: Comparison between A_{\max} obtained from the smoothed amplitude spectrum following the procedure by Kjeldsen et al. (2008b) with those obtained from the individual mode amplitudes. The different markers indicate the value of c used to convert the maximum smoothed amplitude to amplitude per radial degree mode. The dashed line gives the 1 : 1 relation. Bottom: Relative offset between the two amplitude measures, with the zero offset given by the black dashed line. The blue dash-dot line indicates the median -6% offset between the amplitudes, which is found to be the same for both values of c .

various stellar parameters, such as T_{eff} , $[\text{Fe}/\text{H}]$, and $\log g$, it should be expected that adopting a constant c adds to the scatter. The values of A_{\max} from the smoothing method, with both values of c are given in Table 3.

4.3. Mode line widths

Following Appourchaux et al. (2014a) we adopt the following relation for the line widths Γ against mode frequency:

$$\ln(\Gamma) = (\alpha \ln(\nu/\nu_{\max}) + \ln \Gamma_{\alpha}) + \left(\frac{\ln \Delta \Gamma_{\text{dip}}}{1 + \left(\frac{2 \ln(\nu/\nu_{\text{dip}})}{\ln(W_{\text{dip}}/\nu_{\max})} \right)^2} \right), \quad (4.7)$$

where the first part describes a power law trend with an exponent α and a value of Γ_{α} at ν_{\max} . The second part de-

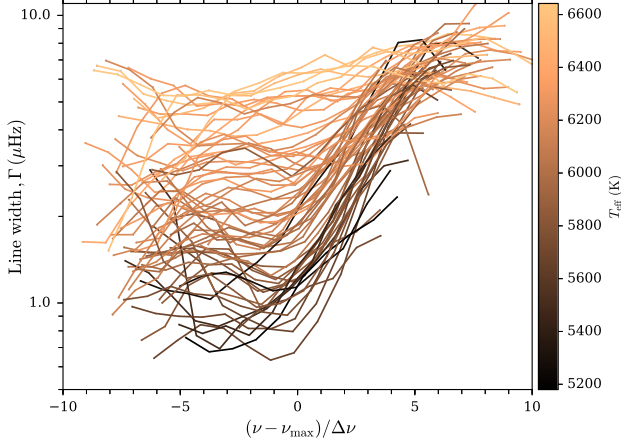


Figure 16. Radial mode line widths against a proxy for the radial order, with the color indicating the T_{eff} . For a better visualization the line widths have been smoothed with 5-point Epanechnikov filter.

scribes a Lorentzian dip in the line widths in $\ln \nu$, centered on ν_{dip} with a width W_{dip} and an depth $\Delta\Gamma_{\text{dip}}$. For the fit the values of $\ln(\Gamma)$ were calculated from the Γ posterior distributions; the $\ln(\Gamma)$ -distribution is typically better approximated by a normal distribution (Toutain & Appourchaux 1994). We note that while Equation 4.7 matches that reported by Appourchaux et al. (2014a), these authors did in fact use a formula with the Lorentzian subtracted rather than added as in Equation 4.7 (Appourchaux et al. 2016). Both formulations can be used, but the reported parameters will naturally differ; $\Delta\Gamma_{\text{dip}}$ in Equation 4.7 is for instance constrained to a value between 0 and 1 if a dip in Γ is to be produced, whereas it can take on any value above 1 if the Lorentzian is instead subtracted. We chose the formulation where the Lorentzian is added in log-space, because we found that this provided better constrained fits from a lower correlation between the Γ_{α} , $\Delta\Gamma_{\text{dip}}$, and W_{dip} parameters. We note that the parameter W_{dip} has two solutions, one higher than ν_{max} , and one lower — in our fits we chose the $W_{\text{dip}} > \nu_{\text{max}}$ solution with a prior on W_{dip} . All stars were fitted using both the full version of Equation 4.7 and using only the first power law component — Figure 16 shows for all stars in the sample the measured line widths against a proxy for the radial order. The fit was made using *emcee* (Foreman-Mackey et al. 2013), with the parameter values and uncertainties given by the posterior distribution medians and 68% HPD intervals. We evaluate which of the two types of fit is the best based on a visual inspection of the fits.

Figure 17 shows three examples where the full version of Equation 4.7 was deemed the better — as seen the line widths show a clear depression around ν_{max} . We omitted fitting the solar line widths from the degraded VIRGO data, because in computing relations for the fit parameters we are interested in as accurate and precise data as possible.

The parameters from the fits are given in Table 3 and shown in Figure 19 as a function of ν_{max} and T_{eff} . For the dependencies of the FWHM of the Lorentzian line width dip in frequency units we used the transformation $\text{FWHM}_{\text{dip}} = \nu_{\text{dip}}(|\sqrt{W_{\text{dip}}/\nu_{\text{max}}} - \sqrt{\nu_{\text{max}}/W_{\text{dip}}}|)$ (Appour-

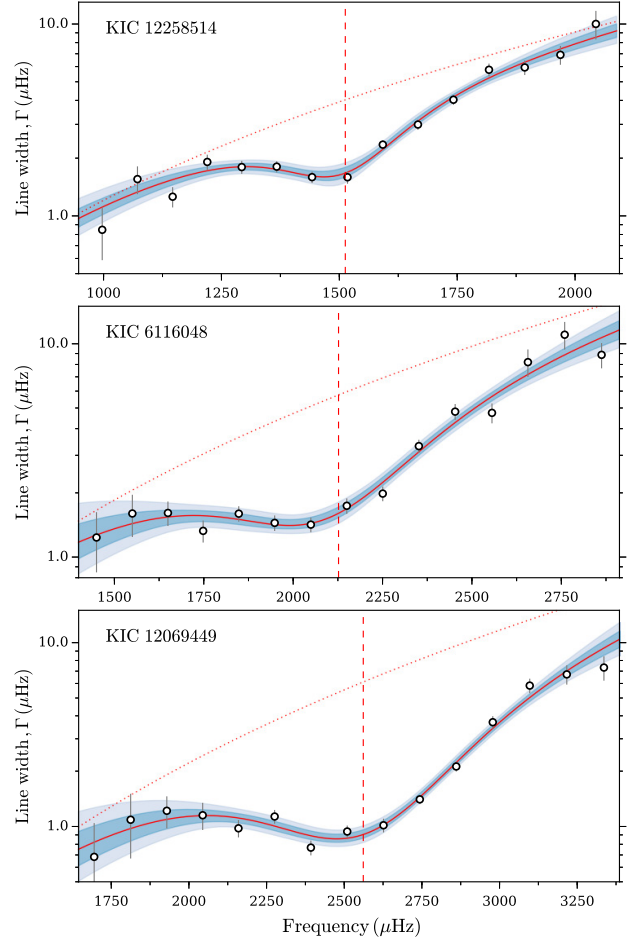


Figure 17. Radial mode line widths as a function of frequency for KIC 12258514 (top), KIC 6116048 (middle), and KIC 12069449 (bottom). For all three stars the line widths are best fit with the Lorentzian included in Equation 4.7, this fit is indicated by the full red lines; the dotted line gives the power law component of the fit. The shaded dark and light blue regions indicate the 1 and 2 σ credible regions of the fits. The dashed vertical lines give the ν_{max} values.

chaux et al. 2016). The amplitude of the Lorentzian dip may be calculated using the transformation $A_{\text{dip}} = \exp(|\ln \Delta\Gamma_{\text{dip}}|)$ ⁸. Like Appourchaux et al. (2014a) for their sample of 22 *Kepler* stars, we find a clear correlation between the Lorentzian width (W_{dip} or FWHM_{dip}) and ν_{max} , while the power law exponent (α) and the dip amplitude ($\Delta\Gamma_{\text{dip}}$) are found to correlate most strongly with T_{eff} . Only for the fits without the Lorentzian component does the value of Γ_{α} correspond to the line width at ν_{max} , which is seen to correlate with T_{eff} . We return to the overall behavior of the line width at ν_{max} against T_{eff} below. Our estimates of FWHM_{dip} agree well with updated values from Appourchaux et al. (2016). We make linear fits to the different parameters (P) against ν_{max} as $P = a(\nu_{\text{max}}/3090) + b$ and T_{eff} as $P = a(T_{\text{eff}}/5777) + b$. Specifically, we perform a Deming regression (Deming 1943) where uncertainties in both the dependent (σ_x) and independent variables (σ_y) are considered via the

⁸ Note that this A_{dip} , where the Lorentzian in Equation 4.7 is added rather than subtracted, is different from that given by Appourchaux et al. (2014a) who instead has $A_{\text{dip}} = \Delta\Gamma_{\text{dip}}$.

Table 4
Parameters from linear fits to the fitted values of Equation 4.7 against ν_{\max} and T_{eff} . The linear fits are indicated as red lines in Figure 19. For the fits of Γ_α only values from the full fit of Equation 4.7 were included.

P (μHz)	$P = a(\nu_{\max}/3090) + b$		$P = a(T_{\text{eff}}/5777) + b$	
	b	a	b	a
α	2.95 ± 0.16	0.39 ± 0.08	-25.5 ± 1.4	29.1 ± 1.5
Γ_α	3.08 ± 0.98	3.32 ± 0.50	6.3 ± 6.6	-1.8 ± 6.9
$\Delta\Gamma_{\text{dip}}$	-0.47 ± 0.06	0.62 ± 0.04	3.5 ± 0.4	-3.3 ± 0.4
W_{dip}	4637 ± 237	-141 ± 138	-28021 ± 2964	31971 ± 3105
ν_{dip}	2984 ± 31	60 ± 18	-23818 ± 1909	26785 ± 1983
FWHM_{dip}	1253 ± 162	-85 ± 96	-5649 ± 1093	6550 ± 1151

following merit function (Press et al. 1993):

$$M(a, b) = \sum_{i=1}^N \frac{(y_i - a - bx_i)^2}{\sigma_{y,i}^2 + b^2 \sigma_{x,i}^2}, \quad (4.8)$$

which serves as our log-likelihood function in the `emcee` optimization. The coefficients from the different fits are given in Table 4. For the fit of Γ_α against T_{eff} we include only the values from the fit including the Lorentzian in Equation 4.7. Some of the scatter in the relations will likely be due to activity; the dip in line widths for the Sun has for instance been found to depend on the solar cycle (see, e.g., Komm et al. 2000a,b). We note that the fit coefficients in Table 4 may well be used to define prior functions and initial guesses in future peak-bagging exercises.

For a star with a temperature of the Sun we find that it should have an exponent of $\alpha \approx 3.6$ — this comes close to that measured by Komm et al. (2000b) of $\alpha \approx 3.31$ for frequencies below $2450 \mu\text{Hz}$, which is about the lower limit of what one would observe for a similar star with *Kepler*. In general the exponent for the Sun has been measured below the dip where higher values have been found, e.g., $\alpha \approx 5$ by Libbrecht & Woodard (1991), $\alpha \approx 7$ by Chaplin et al. (1997), and $\alpha \approx 8$ by Davies et al. (2014a) — it is therefore not surprising that a lower value of α is found when the measurement is done across the dip. Like Appourchaux et al. (2014a) we find that the amplitude of the line width dip decreases with T_{eff} . This behavior is contrary to theoretical damping-rate estimates (Balmforth 1992; Houdek 1996) which assume solar-calibrated convection parameters, such as the mixing-length and anisotropy of the turbulent velocity field, for damping-rate calculations in other stars. Updated calculations of mode damping rates (Houdek et al., in prep.) are, however, able to capture the overall behavior of the line widths for stars in the current study spanning a large range in T_{eff} — these new calculations adopt, in addition to the standard ingredients described in Houdek et al. (1999) and Houdek (2006), turbulent pressure profiles and $T-\tau$ relations calibrated to 3D hydrodynamical simulation results by Trampedach et al. (2014). An example of such an improved damping-rate computation provides Figure 18, which compares estimated mode line widths with observations for KIC 6933899 (Fred), using stellar parameters from the best fitting ASTFIT model (Paper II).

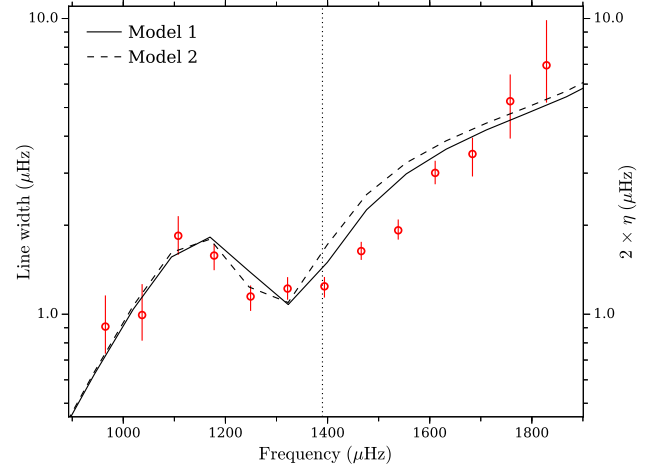


Figure 18. Line widths (left axis) for KIC 6933899 (Fred) and model calculated damping-rates (η) by Houdek et al. (submitted) (right axis), multiplied by 2 to correspond to the mode FWHM. The full and dashed lines gives the results for two model calculations of mode damping-rates. Model 1 assumes a constant value for the velocity anisotropy Φ ; Model 2 has a depth-dependent velocity anisotropy, guided by 3D simulation results from Trampedach et al. (2014). Stellar parameters from the best fitting ASTFIT model (Paper II) were used in the damping-rate calculations. The vertical dotted line indicates the value of ν_{\max} .

The estimate of Γ at ν_{\max} was obtained by a Monte Carlo sampling from the posteriors of the fit parameters in Equation 4.7 and the estimate of ν_{\max} from the mode amplitudes. The values obtained are plotted against T_{eff} in Figure 20 and given in Table 3. We have fitted two relations for the line width at ν_{\max} , namely, the power-law relation by Appourchaux et al. (2012b):

$$\Gamma = \Gamma_0 + \alpha \left(\frac{T_{\text{eff}}}{5777} \right)^\beta \mu\text{Hz}, \quad (4.9)$$

and the exponential relation used, for instance, by Corsaro et al. (2012):

$$\Gamma = \Gamma_0 \exp \left(\frac{T_{\text{eff}} - 5777}{T_0} \right) \mu\text{Hz}. \quad (4.10)$$

In the fits of Equations 4.9 and 4.10 we complement our set of line widths with those from peak-bagging of 42 giants in NGC 6819 by Handberg et al. (2016, submitted) where we adopt an uncertainty of 100 K on T_{eff} for all stars, and 19 red giants by Corsaro et al. (2015) where we adopt T_{eff} values from Pinsonneault et al. (2012) (from the infra-red flux method). The line widths from Handberg et al. (2016, submitted) are given by the average of the radial modes; those from Corsaro et al. (2015) are given as the average over three radial modes centered in the mode with the highest amplitude. We fit both relations to the line widths using an orthogonal distance regression (ODR; Boggs & Rogers 1990) in order to take into account both the uncertainties on Γ and T_{eff} . This procedure is employed in a Monte Carlo (MC) run where we in each iteration draw at random 50 stars to include in the fit. For Equation 4.9 we obtain from the MC distributions the following values for the fitting parameters: $\Gamma_0 \approx 0.07 \pm 0.03 \mu\text{Hz}$, $\alpha \approx 0.91 \pm 0.13 \mu\text{Hz}$, and $\beta \approx 15.3 \pm 1.9$; for Equation 4.10 we obtain: $\Gamma_0 \approx 1.02 \pm 0.07 \mu\text{Hz}$ and $T_0 \approx 436 \pm 24 \text{ K}$. If we fit only the red giants by a constant value for the line width we find a value of

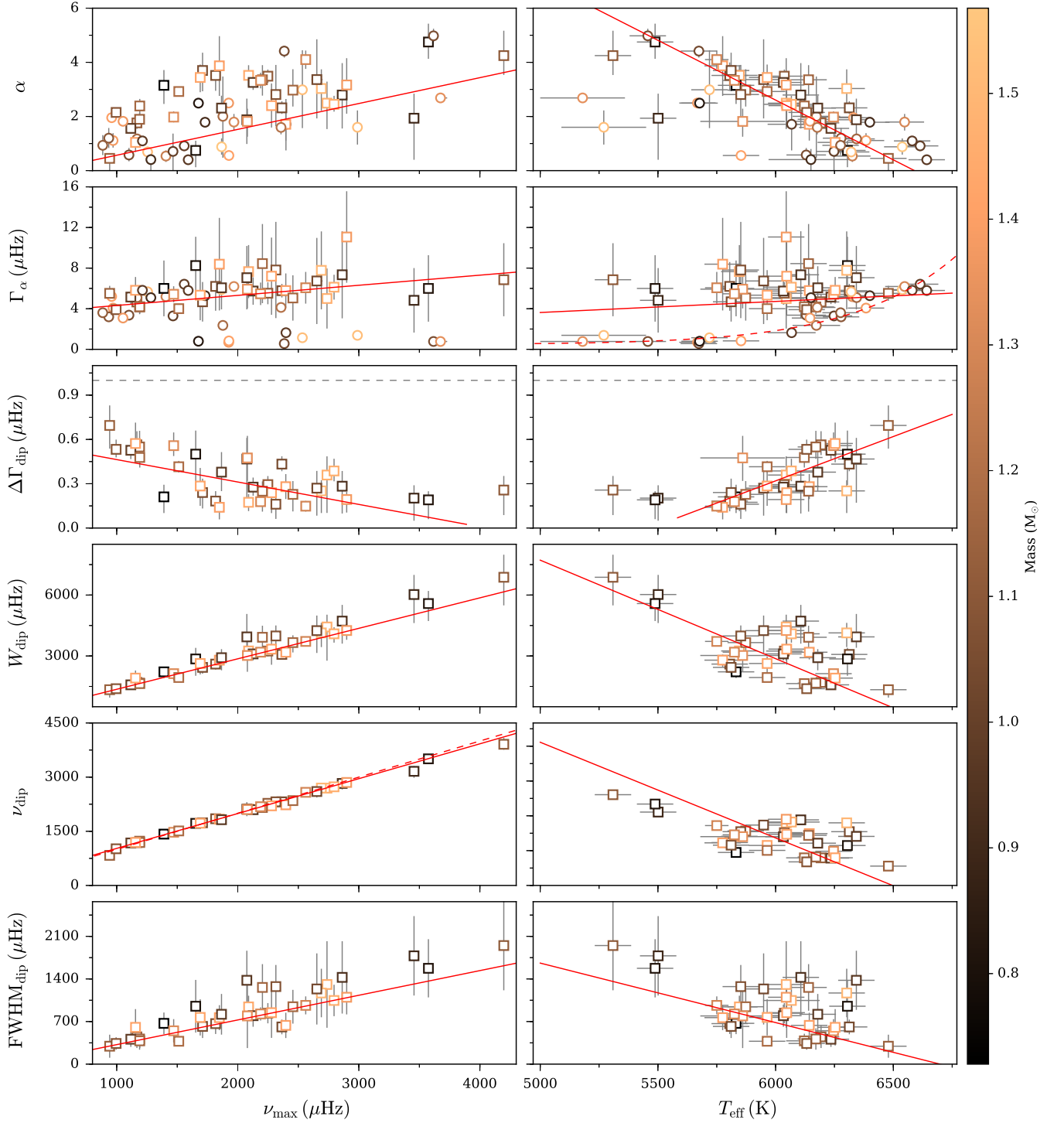


Figure 19. Parameters from the fit of Equation 4.7 to the radial mode line widths of the sample stars against ν_{\max} (left panels) and T_{eff} (right panels). The color indicates the modeled mass. Stars fitted using only the first part of Equation 4.7, i.e., with parameters α and Γ_{α} , are given by circles (○); stars where also the Lorentzian component was included, i.e., using also $\Delta\Gamma_{\text{dip}}$, W_{dip} , and ν_{dip} , are plotted with squares (◻). The coefficient for the fitted linear relations (solid lines) are given in Table 4. The dashed line in the Γ_{α} against T_{eff} panel gives the relation for Γ at ν_{\max} by Appourchaux et al. (2012b).

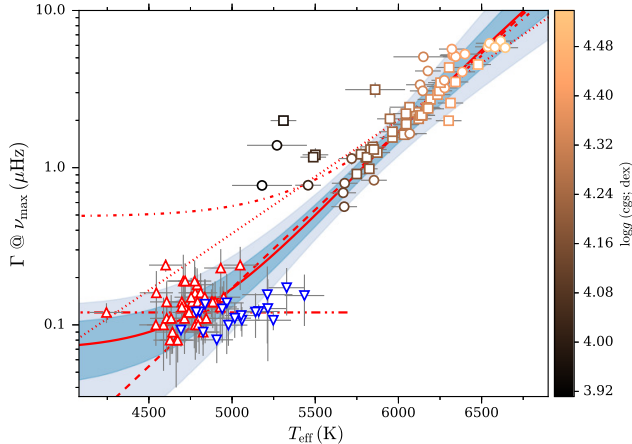


Figure 20. Line width at ν_{\max} against T_{eff} with the colour indicating the value of $\log g$. See Table 3 for the plotted values, where the line widths are estimated from the fit of Equation 4.7. The red upward triangles indicate the line widths from the peak-bagging of 42 giants in NGC 6819 by Handberg et al. (2016, submitted); the blue downward triangles give the line widths from Corsaro et al. (2015) for 19 red giants. The full red line gives the fit of Equation 4.9 with the shaded dark and light blue regions indicating the 1 and 2σ intervals of the fit; the dash-dot line gives the corresponding fit of Equation 4.9 by Appourchaux et al. (2012b) (their Table 3); the dashed line gives the fit of Equation 4.10; the dotted line gives the corresponding fit of Equation 4.10 by Corsaro et al. (2012); the dash-dot-dot line gives the constant fit to only the red giants. The markers indicate if the full fit of Equation 4.7 is preferred (\square), or only the power law component (\circ).

$\Gamma_0 \approx 0.12 \pm 0.01 \mu\text{Hz}$. For the parameter uncertainties we have added in quadrature the median from the internal uncertainties from the ODR and the standardized MAD of the best fit ODR values from the MC run. We note here that neglecting the uncertainties in T_{eff} from using, for instance, an ordinary least squares (OLS) approach will affect the fit and the parameters in Equation 4.9. Both relations perform reasonably well, but the fit of Equation 4.9 gives a slightly lower χ^2 value. The resulting relations are displayed in Figure 20. Also shown in Figure 20 are the fits obtained by Appourchaux et al. (2012b) (parameters from their Table 3) and Corsaro et al. (2012).

We see that the cooler MS targets appear to be outliers to the overall relation between line width and temperature. From Figure 19 we can see that the value of ν_{dip} has a proportional bias with respect to ν_{\max} , hence the higher the ν_{\max} the further below ν_{\max} does the dip in line widths appear. For Figure 20 the line widths were estimated at ν_{\max} and thus away from the line width dip for the highest ν_{\max} stars, it is therefore not surprising that these deviate from the overall relation. An offset could potentially also be caused by frequency shifts from stellar activity cycles (Chaplin et al. 2007, 2008a), the evidence of which is currently being studied by Santos et al. (in prep.). The line width for KIC 7970740 was omitted in the fits as it appears to be a particularly strong outlier at $T_{\text{eff}} \approx 5300$ K.

We find that our estimates agree well with those from Appourchaux et al. (2012b) with the main difference seen at low temperatures where the fit is the least constrained if no line widths from giants are included. The estimates from Corsaro et al. (2012) appear to be higher at low

temperatures than the line widths from Handberg et al. (2016, submitted) — this could be due to the method of estimating Γ in Corsaro et al. (2012) from collapsed échelle diagrams for a group of stars. Some scatter is to be expected, because the line widths will depend on parameters besides T_{eff} —Belkacem et al. (2012, 2013) specifically suggest a scaling with T_{eff} and $\log g$. As noted by Appourchaux et al. (2012b), the uncertainty on T_{eff} currently sets the limitations for obtaining a more well constrained prediction for Γ at ν_{\max} , which may then be confronted with theoretical calculations. As for the dip amplitude, activity and stellar cycles will play a role in the scatter around the mean relation for Γ at ν_{\max} (Komm et al. 2000b; Chaplin et al. 2008a). For other analysis of the variation of Γ at ν_{\max} we refer to Goldreich & Kumar (1991); Houdek et al. (1999); Chaplin et al. (2009); Baudin et al. (2011), and Belkacem et al. (2012, 2013).

4.4. Mode visibilities

Mode visibilities are estimated as part of the peak-bagging (see Equation 3.2); these are given in Table 5. Figure 21 shows the obtained visibilities as a function of T_{eff} , ν_{\max} , and mass. The total visibilities are computed from the combination of the MCMC chains for the individual visibilities. We see no strong correlation with T_{eff} , $[\text{Fe}/\text{H}]$ (not shown), or $\log g$ (not shown), and some scatter is observed for the visibilities about their median values. From median binned values there are slight indications of structure in the visibilities against the plotted parameters; the visibilities do, for instance, seem to peak around a temperature of ~ 6100 K and have a depression around a mass of $\sim 1.4 M_{\odot}$. None of the dependencies are, however, very strong, but they do appear similar in shape for different angular degrees.

In comparing to the theoretically estimated values by Ballot et al. (2011), which are calculated considering the *Kepler* bandpass, we see that in median $l = 1$ visibilities are lower than expected, those for $l = 2$ and $l = 3$ are larger than expected, and the total visibilities (up to $l = 3$) are only slightly lower than expected. The difference is most pronounced for the $l = 3$ modes. It is important to note that because $l = 3$ visibilities have only been measured for a subset of stars, it might be that the remainder of the stars (with a S/N too low for a visual detection of $l = 3$ modes) have visibilities in agreement with theory. The comparisons do, however, qualitatively match those obtained by Mosser et al. (2012) for giants observed by *Kepler*; the $l = 3$ modes disagree most with theory in their results too. Similar discrepancies with theory have also been observed for individual CoRoT and *Kepler* targets analyzed by Deheuvels et al. (2010), Mathur et al. (2013), and Lund et al. (2014a), and the Sun by Salabert et al. (2011). Given these discrepancies we discourage the adoption of fixed mode visibilities in peak-bagging exercises. To assess which other parameters in the peak-bagging contribute the most to the uncertainties on the visibilities, and thus which parameters will be most affected by adopting fixed visibilities, we show in Figure 22 with a box-plot the correlations between the visibilities and the remainder of the fitted parameters. Correlations have been estimated using Spearman’s rank correlation (Spearman 1904) from the MCMC chains, because this better catches dependencies which are monotonic but not necessarily linear

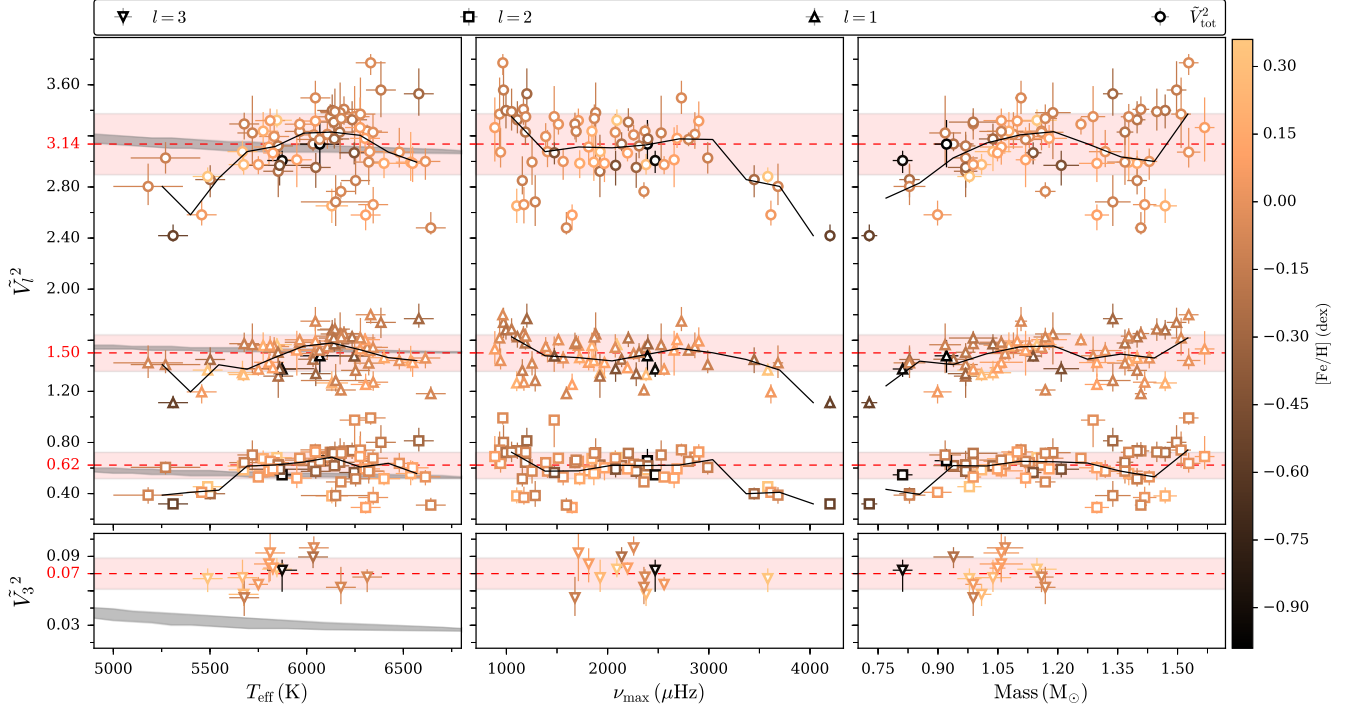


Figure 21. Visibilities as a function of T_{eff} (left), ν_{max} (middle), and mass (right). The color indicates the metallicity; the markers indicate the angular degree (see legend), and shown are also the total visibilities \tilde{V}_{tot}^2 — the bottom panels show the $l = 3$ visibilities on an expanded ordinate scale. The red dashed horizontal lines give the medians for the respective visibilities, with the values indicated in red on the ordinate; the shaded red regions give the standardized median-absolute-deviation (MAD) around the median values, given as 1.4826 times the MAD. The shaded grey regions in the left panel indicate the expected theoretical values from Ballot et al. (2011) for $\log g = 4.0$ and $[\text{Fe}/\text{H}]$ in the range ± 1 . The continuous black lines give the median binned values where the span of the parameters in the different panels have been divided into 10 bins.

(as done in Pearson’s correlation; Pearson 1895). As seen, the correlations are overall quite small with median values within $\rho = \pm 0.2$ in all cases. The visibilities are seen to primarily correlate with the parameters of the noise background, as might be expected with an increasing correlation with increasing angular degree l ; a small change in, say, N has a relatively larger impact on the visibility of $l = 3$ modes compared to that of $l = 1$ modes and one should therefore expect a larger correlation. This suggests that fixing the visibilities might bias the fit of the background and vice versa for fixed backgrounds. One should however also be cautious with the extracted visibilities, because an inappropriate model for the background might bias the measured values.

Considering the total visibility we note that Ballot et al. (2011) include modes up to $l = 4$, but this should not significantly affect any observed discrepancy. The median value obtained for \tilde{V}_{tot}^2 is 3.07, which is close to the value of $c = 3.04$ (Bedding et al. 2010) often adopted in estimating radial mode amplitudes via the method of Kjeldsen et al. (2005, 2008b). In Section 4.2.1 we did indeed also find that the amplitudes from the smoothing method were equal in median from using $c = 3.04$ and $c = \tilde{V}_{\text{tot}}^2$, with only a slightly reduced scatter from using the measured total visibility. The value of $c = 3.04$ (or alternatively $c = 3.07$) should therefore serve as a reasonably good choice for analysis of amplitudes for a large sample of stars, but the small systematic offset found in Section 4.2.1 should be remembered when comparing with theory. We note also that Mosser et al. (2012) find a mean value of $c = 3.06$ from *Kepler* giants with T_{eff} be-

tween approximately 4000 and 5100 K, but with a larger scatter than for our values. This does, however, indicate that the visibilities do not increase with decreasing temperature as suggested by theory. If a trend exists with T_{eff} and/or $[\text{Fe}/\text{H}]$, which should be the main parameters determining the visibilities, they cannot be clearly discerned from the observations.

Some of the discrepancies, and scatter in observed values, can likely be explained by some of the simplifications adopted in the calculations by Ballot et al. (2011) and in general. These include, for instance, the neglect of non-adiabatic effects and a height dependence on mode amplitudes in the stellar atmosphere (see, e.g., Baldner & Schou 2012; Schou 2014, 2015). Furthermore, phenomena such as spots and other local surface features will influence the measured visibility. An effect will also come from the way in which the stellar limb-darkening (LD) is described; the calculation of LD coefficients (LDCs) for parametrized LD laws will, e.g., depend on the description of convection in the adopted atmosphere models, the method used for integrating the specific flux, and the resolution used when fitting a parametrized LD law to these flux values. Ballot et al. (2011) compared their visibilities with those obtained using LDC from Sing (2010) (specific to the *Kepler* bandpass) and found that their values were generally higher. Similarly, Claret & Bloemen (2011) compared their *Kepler* LDCs to those of Sing (2010) and found differences. This indicates that some systematic uncertainty should be added to the theoretically derived visibilities. In any case Sing (2010) showed from fits to planetary transit curves that model com-

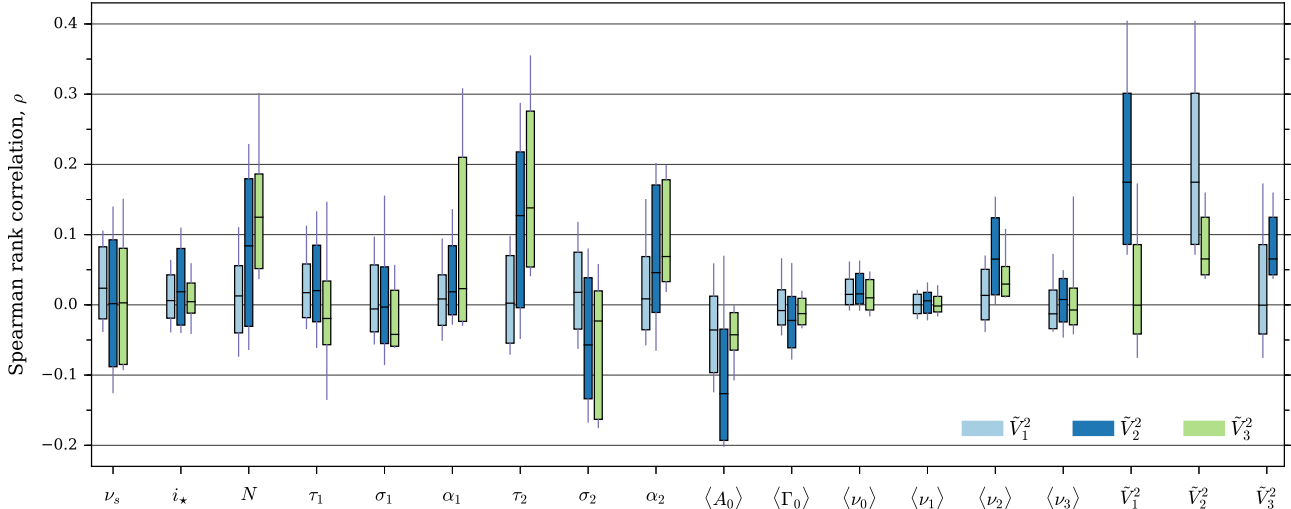


Figure 22. Box-plot of Spearman’s rank correlation ρ between the parameters optimized in the peak-bagging and the mode visibilities. The box whiskers give the 15th and 85th percentiles.

putations of LDC generally disagree with those derived empirically. The treatment of the LD is, however, likely a secondary effect — as shown in Lund et al. (2014a) the specific LD law adopted (neglecting the linear one) only has minor effects on the visibilities, and the shape has to be changed by a large amount away from the limb in order to take effect. This, and the fact that discrepancies between measured and modeled visibilities are found for the Sun (Salabert et al. 2011), where the LD is well known as a function of wavelength (Neckel & Labs 1994), indicates that the simplified assumptions concerning the mode physics likely are the main contributor to the discrepancies. We note, however, that modes of $l = 3$ would be relatively more affected by details of the LD, because of the considerably stronger cancellation for $l = 3$ modes (total in the absence of LD), compared to modes of $l = 1, 2$ (Lund et al. 2014a). It could also be questioned if the assumption of equipartition of energy between modes of different angular degree holds true.

4.4.1. Detection of $l \geq 3$ modes

For solar-like oscillators observed by *Kepler* the highest angular degree of modes is typically $l = 2$. Only for the highest S/N cases can higher degree modes be identified — in the current sample octupole $l = 3$ modes were identified and included in the peak-bagging in 14 such targets. It is, however, possible to obtain information on the combined signal for $l = 3$ modes in a given star. Such a signal could, for instance, be used in estimating the small separation $\delta\nu_{1,3}$ which can contribute a constraint in modeling efforts (see, e.g., Bellinger et al. 2016).

To optimize the combined signal from modes of a given angular degree we applied the method outlined in Lund et al. (2014a). Briefly, the échelle diagram is collapsed along the vertical direction after having first stretched the frequency scale such that modes of a given l form a straight ridge — this ensures that all mode power from the particular l -values is co-added with as little spread as possible. Individual frequencies from best fitting ASTFIT models were used to stretch the frequency scale (see Paper II). Before the power is co-added the power spectrum is smoothed to account also for the mode line

widths and a potential rotational splitting. In Figure 23 we show in a contour plot the collapsed échelle diagrams for all stars, optimized to increase the signal of $l = 3$ modes. To further increase the visibility of these modes we first divided out the model of the power spectrum from the peak-bagging, including also fitted $l = 3$ modes. We see that for most stars a clearly detectable signal from $l = 3$ is present. It is beyond the scope of this paper to estimate $\delta\nu_{1,3}$ for the stars and test the statistical significance of the signals, but Figure 23 should indicate that obtaining this information would be possible. Some of the signal seen around $l < 3$ modes in the residual spectra is likely due contamination from higher degree modes ($l \geq 5$) or deviations in the mode shape from the assumed simple Lorentzian — asymmetry of the modes would, for instance, leave some unaccounted for power in the residual spectrum.

For the highest S/N targets one may further look for indications of hexadecapole $l = 4$ modes. In Figure 24 we show the collapsed échelle diagrams optimized for the detection of $l = 4$ for three targets with the strongest apparent $l = 4$ signals, namely, KIC 6603624 (Saxo), KIC 7510397 (middle), and KIC 12069449 (16 Cyg B). As seen an excess in collapsed power in each of these cases falls close to the expected position at ν_{\max} from the ASTFIT model. The signal seen in 16 Cyg A (not shown) and B corresponds well to the signal found in Lund et al. (2014a) from a shorter *Kepler* data set. Curiously, the peak around ~ 0.85 seen in Saxo and 16 Cyg B appears to coincide with the expected position of dotriacontapole $l = 5$ modes — whether this signal truly is from $l = 5$ modes requires further investigation. In any case, it is clear that for a star like KIC 7510397 the $l = 0, 2$ modes will be polluted by $l = 5$ modes; similarly will $l = 6, 9$ modes pollute the $l = 1$ signal, etc. (Appourchaux & Virgo Team 1998; Lund et al. 2014a).

5. EXAMPLE OUTPUT

For each of the 66 stars in the sample we have provided a set of outputs from the peak-bagging. Tables and plots for all stars will be available in the online appendices. The extracted parameters may in addition be obtained

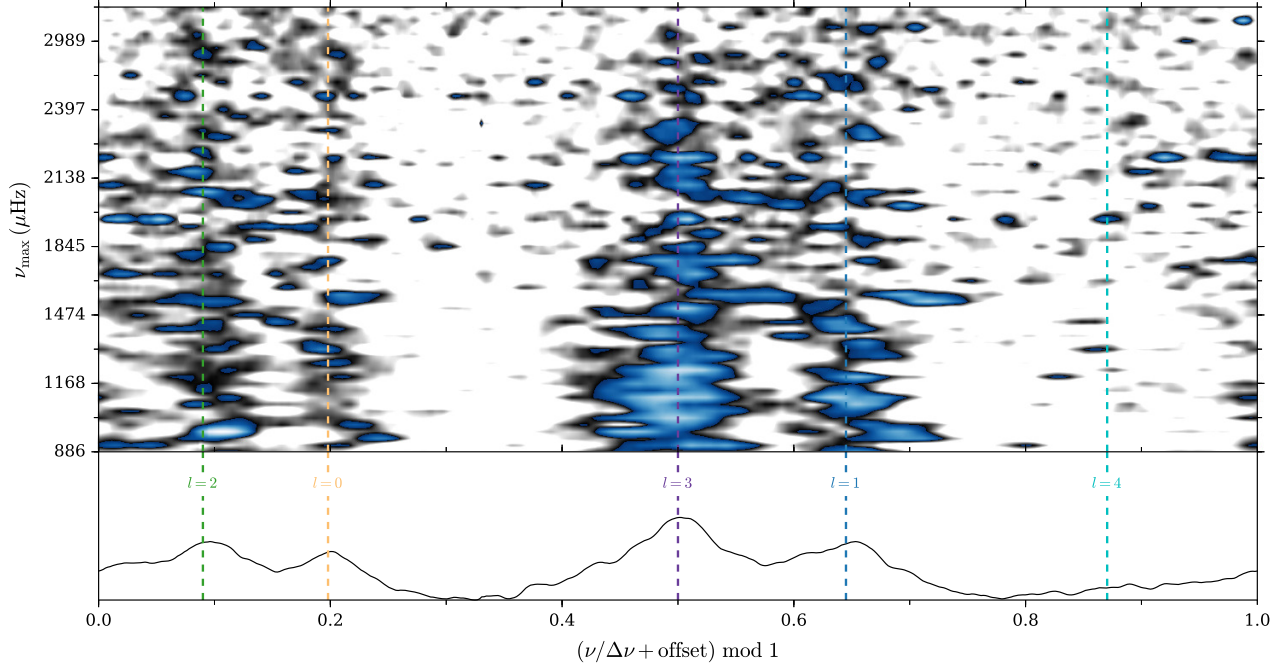


Figure 23. Collapsed échelle diagrams optimised for $l = 3$ using the method of Lund et al. (2014a). The residual power spectra were used where the peak-bagging model has been divided out. Each horizontal line in the top part of the plot corresponds to a given star, ordered in terms of ν_{\max} . The scale goes white (low power) to black (high power) below the 90th percentile, and from blue (low power) to white (high power) above it. The lower panel shows the average collapsed échelle diagram from all stars. Vertical dashed lines have been added to guide the eye to the contribution from different angular degrees. For an optimization of the $l = 3$ signal, modes from $l \neq 3$ will not form a straight ridge in the échelle diagram and will consequently give a wide signal in the collapsed spectrum. An offset has been added to the frequencies for each of the collapsed spectra to align all $l = 3$ signals at 0.5.

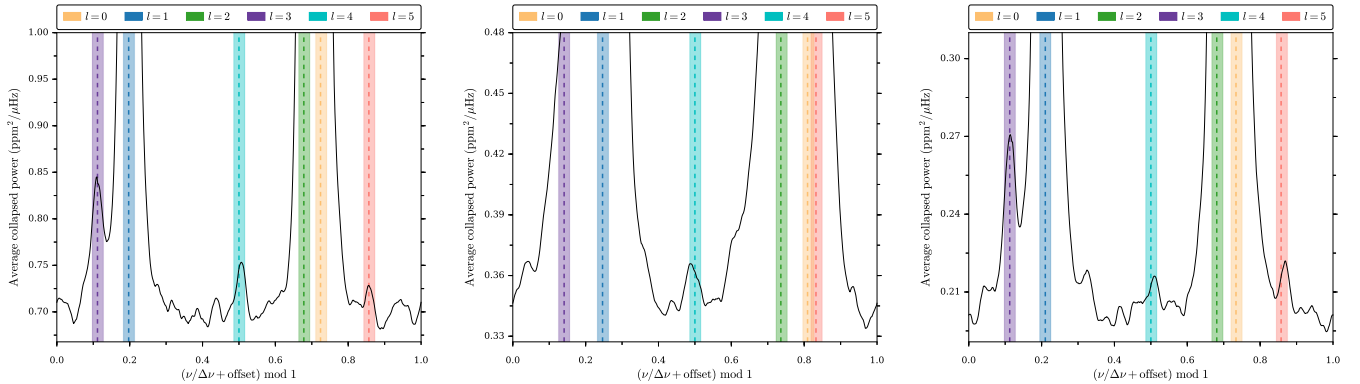


Figure 24. Examples of collapsed échelle diagrams optimised for the detection of $l = 4$. Shown are the spectra for KIC 6603624 (left; Saxo), KIC 7510397 (middle), and KIC 12069449 (right; 16 Cyg B), these represent some of the cases with the strongest apparent $l = 4$ signals. An offset has been added to place the position of the expected $l = 4$ signal at 0.5.

from the results section of the KASOC data base⁹.

The outputs include first of all a table with the mode information from the MCMC peak-bagging, like the one given in Table 6 for KIC 6225718 (Saxo2). The table gives for a given mode the angular degree, radial order, frequency, amplitude, line width, and the natural logarithm of the Bayes factor K from the quality control in Section 3.2.3. The uncertainties on the mode parameters are obtained from the 68% HPD interval of the posterior probability distributions. As amplitudes and line widths are only fitted to radial $l = 0$ modes we only give these values for these modes. The visibilities for a given star can be found in Table 5. We note that the radial orders

given are obtained from matching ϵ to the expected value as a function of T_{eff} (see Section 3.2.1) — we suggest that this be used with some caution in modeling efforts and checked independently. A table is also included with the derived frequency difference ratios $r_{01,10,02}$ and second differences $\Delta_2\nu(n, l)$ (see Section 3.3), examples of these are given in Tables 7 and 8.

For each star a number of plots are also prepared. These include (1) a visualization of the obtained ‘best fit’ from the peak-bagging as in Figure 25, given by a plot of the power spectrum overlain with the best fit model and with an indication of the extracted modes; (2) an échelle diagram overlain with the extracted frequencies as in the left panel of Figure 26; (3) a plot of the derived frequency difference ratios $r_{01,10,02}$ as shown

⁹ <http://kasoc.phys.au.dk/results/>.

Table 5

Extracted mode visibilities for angular degrees $l = 1 - 3$. Total visibilities have been constructed from combining the MCMC chains of the individual visibilities. Uncertainties are obtained from the 68% HPD intervals of the posterior PDFs.

KIC	\bar{V}_1^2	\bar{V}_2^2	\bar{V}_3^2	\bar{V}_{tot}^2
1435467	1.52 ^{+0.07} _{-0.09}	0.58 ^{+0.09} _{-0.05}		3.08 ^{+0.17} _{-0.12}
2837475	1.46 ^{+0.06} _{-0.08}	0.53 ^{+0.05} _{-0.07}		3.00 ^{+0.10} _{-0.14}
3427720	1.75 ^{+0.11} _{-0.08}	0.74 ^{+0.05} _{-0.13}		3.50 ^{+0.13} _{-0.05}
3456181	1.74 ^{+0.12} _{-0.12}	0.80 ^{+0.13} _{-0.08}		3.56 ^{+0.23} _{-0.21}
3632418	1.65 ^{+0.06} _{-0.06}	0.73 ^{+0.07} _{-0.04}		3.41 ^{+0.10} _{-0.12}
3656476	1.35 ^{+0.09} _{-0.06}	0.62 ^{+0.04} _{-0.05}	0.07 ^{+0.02} _{-0.01}	3.08 ^{+0.08} _{-0.15}
3735871	1.55 ^{+0.11} _{-0.09}	0.69 ^{+0.06} _{-0.06}		3.21 ^{+0.17} _{-0.11}
4914923	1.43 ^{+0.10} _{-0.06}	0.58 ^{+0.05} _{-0.05}	0.08 ^{+0.01} _{-0.02}	3.11 ^{+0.10} _{-0.14}
5184732	1.57 ^{+0.05} _{-0.04}	0.68 ^{+0.03} _{-0.03}	0.08 ^{+0.01} _{-0.01}	3.32 ^{+0.09} _{-0.06}
5773345	1.27 ^{+0.09} _{-0.06}	0.38 ^{+0.07} _{-0.06}		2.65 ^{+0.13} _{-0.13}
5950854	1.32 ^{+0.17} _{-0.17}	0.62 ^{+0.11} _{-0.10}		2.92 ^{+0.29} _{-0.20}
6106415	1.50 ^{+0.03} _{-0.05}	0.63 ^{+0.03} _{-0.02}	0.10 ^{+0.01} _{-0.01}	3.21 ^{+0.08} _{-0.10}
6116048	1.45 ^{+0.04} _{-0.06}	0.62 ^{+0.03} _{-0.02}	0.09 ^{+0.01} _{-0.01}	3.14 ^{+0.09} _{-0.06}
6225718	1.54 ^{+0.03} _{-0.04}	0.62 ^{+0.02} _{-0.02}	0.07 ^{+0.01} _{-0.01}	3.24 ^{+0.05} _{-0.06}
6508366	1.80 ^{+0.04} _{-0.07}	0.99 ^{+0.01} _{-0.05}		3.77 ^{+0.07} _{-0.10}
6603624	1.33 ^{+0.06} _{-0.05}	0.59 ^{+0.04} _{-0.03}	0.06 ^{+0.01} _{-0.01}	2.98 ^{+0.08} _{-0.08}
6679371	1.44 ^{+0.10} _{-0.07}	0.64 ^{+0.08} _{-0.07}		3.07 ^{+0.19} _{-0.12}
6933899	1.55 ^{+0.07} _{-0.06}	0.64 ^{+0.03} _{-0.04}		3.20 ^{+0.10} _{-0.09}
7103006	1.27 ^{+0.09} _{-0.07}	0.37 ^{+0.08} _{-0.06}		2.66 ^{+0.14} _{-0.15}
7106245	1.48 ^{+0.12} _{-0.13}	0.66 ^{+0.09} _{-0.08}		3.14 ^{+0.19} _{-0.18}
7206837	1.25 ^{+0.09} _{-0.04}	0.29 ^{+0.05} _{-0.05}		2.58 ^{+0.08} _{-0.12}
7296438	1.56 ^{+0.10} _{-0.12}	0.67 ^{+0.06} _{-0.06}		3.24 ^{+0.15} _{-0.16}
7510397	1.58 ^{+0.11} _{-0.05}	0.64 ^{+0.06} _{-0.04}		3.23 ^{+0.15} _{-0.10}
7680114	1.56 ^{+0.07} _{-0.08}	0.65 ^{+0.04} _{-0.04}	0.09 ^{+0.03} _{-0.02}	3.32 ^{+0.09} _{-0.13}
7771282	1.48 ^{+0.15} _{-0.13}	0.98 ^{+0.02} _{-0.21}		3.35 ^{+0.24} _{-0.23}
7871531	1.45 ^{+0.10} _{-0.11}	0.40 ^{+0.05} _{-0.05}		2.86 ^{+0.11} _{-0.14}
7940546	1.63 ^{+0.08} _{-0.08}	0.74 ^{+0.06} _{-0.06}		3.33 ^{+0.15} _{-0.11}
7970740	1.11 ^{+0.05} _{-0.04}	0.32 ^{+0.03} _{-0.03}		2.42 ^{+0.09} _{-0.05}
8006161	1.37 ^{+0.05} _{-0.04}	0.45 ^{+0.02} _{-0.02}	0.07 ^{+0.01} _{-0.01}	2.88 ^{+0.07} _{-0.05}
8150065	1.65 ^{+0.17} _{-0.24}	0.72 ^{+0.11} _{-0.14}		3.38 ^{+0.24} _{-0.36}
8179536	1.54 ^{+0.10} _{-0.08}	0.68 ^{+0.06} _{-0.07}		3.23 ^{+0.14} _{-0.14}
8228742	1.63 ^{+0.06} _{-0.05}	0.72 ^{+0.04} _{-0.04}		3.35 ^{+0.10} _{-0.09}
8379927	1.52 ^{+0.04} _{-0.03}	0.65 ^{+0.02} _{-0.03}		3.17 ^{+0.05} _{-0.05}
8394589	1.57 ^{+0.08} _{-0.06}	0.62 ^{+0.04} _{-0.04}		3.18 ^{+0.12} _{-0.08}
8424992	1.57 ^{+0.17} _{-0.22}	0.70 ^{+0.11} _{-0.12}		3.22 ^{+0.29} _{-0.28}
8694723	1.48 ^{+0.06} _{-0.04}	0.57 ^{+0.05} _{-0.02}		3.07 ^{+0.08} _{-0.09}
8760414	1.38 ^{+0.05} _{-0.06}	0.55 ^{+0.03} _{-0.03}	0.08 ^{+0.01} _{-0.02}	3.01 ^{+0.08} _{-0.10}
8938364	1.57 ^{+0.09} _{-0.07}	0.64 ^{+0.04} _{-0.04}	0.05 ^{+0.02} _{-0.02}	3.29 ^{+0.09} _{-0.12}
9025370	1.41 ^{+0.11} _{-0.07}	0.61 ^{+0.05} _{-0.06}		3.03 ^{+0.12} _{-0.12}
9098294	1.51 ^{+0.07} _{-0.08}	0.62 ^{+0.04} _{-0.04}		3.12 ^{+0.11} _{-0.10}
9139151	1.60 ^{+0.05} _{-0.08}	0.59 ^{+0.04} _{-0.03}		3.18 ^{+0.10} _{-0.08}
9139163	1.46 ^{+0.06} _{-0.05}	0.52 ^{+0.06} _{-0.05}		2.99 ^{+0.10} _{-0.12}
9206432	1.44 ^{+0.12} _{-0.08}	0.56 ^{+0.10} _{-0.09}		2.99 ^{+0.24} _{-0.15}
9353712	1.62 ^{+0.16} _{-0.14}	0.74 ^{+0.15} _{-0.14}		3.37 ^{+0.29} _{-0.27}
9410862	1.34 ^{+0.09} _{-0.10}	0.57 ^{+0.07} _{-0.06}		2.95 ^{+0.11} _{-0.16}
9414417	1.36 ^{+0.09} _{-0.08}	0.52 ^{+0.08} _{-0.06}		2.85 ^{+0.19} _{-0.11}
9812850	1.42 ^{+0.09} _{-0.10}	0.58 ^{+0.10} _{-0.10}		2.99 ^{+0.20} _{-0.18}
9955598	1.20 ^{+0.06} _{-0.09}	0.41 ^{+0.04} _{-0.04}		2.58 ^{+0.11} _{-0.08}
9965715	1.38 ^{+0.06} _{-0.10}	0.59 ^{+0.05} _{-0.06}		2.97 ^{+0.11} _{-0.16}
10068307	1.68 ^{+0.08} _{-0.08}	0.72 ^{+0.05} _{-0.07}		3.40 ^{+0.13} _{-0.14}
10079226	1.52 ^{+0.15} _{-0.20}	0.52 ^{+0.10} _{-0.08}		3.01 ^{+0.25} _{-0.21}
10162436	1.69 ^{+0.09} _{-0.09}	0.73 ^{+0.08} _{-0.08}		3.39 ^{+0.18} _{-0.15}
10454113	1.21 ^{+0.05} _{-0.04}	0.49 ^{+0.03} _{-0.02}	0.06 ^{+0.02} _{-0.01}	2.77 ^{+0.07} _{-0.06}
10516096	1.58 ^{+0.06} _{-0.06}	0.66 ^{+0.04} _{-0.04}		3.23 ^{+0.09} _{-0.09}
10644253	1.59 ^{+0.11} _{-0.09}	0.73 ^{+0.06} _{-0.05}		3.32 ^{+0.15} _{-0.12}
10730618	1.29 ^{+0.13} _{-0.09}	0.38 ^{+0.11} _{-0.09}		2.68 ^{+0.21} _{-0.19}
10963065	1.62 ^{+0.06} _{-0.07}	0.72 ^{+0.04} _{-0.03}		3.31 ^{+0.11} _{-0.07}
11081729	1.43 ^{+0.04} _{-0.11}	0.60 ^{+0.05} _{-0.10}		2.98 ^{+0.13} _{-0.15}
11253226	1.18 ^{+0.06} _{-0.04}	0.31 ^{+0.06} _{-0.03}		2.48 ^{+0.12} _{-0.05}
11779290	1.42 ^{+0.14} _{-0.12}	0.39 ^{+0.06} _{-0.07}		2.80 ^{+0.18} _{-0.15}
12009504	1.63 ^{+0.07} _{-0.05}	0.72 ^{+0.04} _{-0.04}		3.34 ^{+0.11} _{-0.09}
12069127	1.53 ^{+0.14} _{-0.12}	0.69 ^{+0.16} _{-0.10}		3.27 ^{+0.24} _{-0.27}
12069424	1.38 ^{+0.05} _{-0.03}	0.59 ^{+0.02} _{-0.02}	0.08 ^{+0.00} _{-0.01}	3.07 ^{+0.05} _{-0.07}
12069449	1.37 ^{+0.05} _{-0.05}	0.53 ^{+0.03} _{-0.02}	0.07 ^{+0.01} _{-0.00}	2.98 ^{+0.07} _{-0.08}
12258514	1.60 ^{+0.04} _{-0.05}	0.68 ^{+0.03} _{-0.03}		3.29 ^{+0.06} _{-0.08}
12317678	1.77 ^{+0.12} _{-0.07}	0.81 ^{+0.10} _{-0.08}		3.53 ^{+0.20} _{-0.17}

Table 6

Extracted mode parameters and quality control (Equation 3.2.3) for KIC 6225718 (Saxo2). The complete table set (66 tables) is available in the online journal.

n	l	Frequency (μHz)	Amplitude (ppm)	Line width (μHz)	$\ln K$
11	1	1351.15 ^{+0.59} _{-0.70}			2.2
12	0	1407.23 ^{+0.95} _{-1.18}	0.79 ^{+0.09} _{-0.13}	2.50 ^{+2.31} _{-1.34}	>6
12	1	1454.25 ^{+0.53} _{-0.70}			>6
13	0	1510.10 ^{+0.70} _{-0.48}	0.99 ^{+0.11} _{-0.15}	2.50 ^{+2.66} _{-0.95}	>6
13	1	1558.45 ^{+0.54} _{-0.42}			>6
13	2	1605.68 ^{+0.74} _{-0.81}			1.45
14	0	1615.12 ^{+0.24} _{-0.29}	1.16 ^{+0.07} _{-0.07}	2.60 ^{+0.67} _{-0.51}	>6
14	1	1664.09 ^{+0.21} _{-0.23}			>6
14	2	1711.40 ^{+0.50} _{-0.60}			3.14
15	0	1720.35 ^{+0.18} _{-0.17}	1.46 ^{+0.06} _{-0.07}	2.30 ^{+0.35} _{-0.37}	>6
15	1	1769.65 ^{+0.15} _{-0.14}			>6
15	2	1816.19 ^{+0.34} _{-0.36}			>6
16	0	1825.41 ^{+0.12} _{-0.13}	1.89 ^{+0.06} _{-0.07}	2.19 ^{+0.34} _{-0.22}	>6
16	1	1873.88 ^{+0.13} _{-0.14}			>6
16	2	1919.97 ^{+0.26} _{-0.26}			>6
17	0	1929.05 ^{+0.12} _{-0.14}	2.29 ^{+0.06} _{-0.06}	2.84 ^{+0.30} _{-0.20}	>6
17	1	1977.35 ^{+0.11} _{-0.12}			>6
17	2	2023.80 ^{+0.22} _{-0.21}			>6
18	0	2032.68 ^{+0.11} _{-0.11}	2.77 ^{+0.07} _{-0.05}	2.67 ^{+0.23} _{-0.18}	>6
18	1	2081.57 ^{+0.09} _{-0.09}			>6
18	2	2128.62 ^{+0.15} _{-0.16}			>6
19	0	2137.59 ^{+0.10} _{-0.09}	3.14 ^{+0.06} _{-0.06}	2.50 ^{+0.21} _{-0.15}	>6
19	1	2186.89 ^{+0.08} _{-0.09}			>6
19	2	2234.70 ^{+0.16} _{-0.16}			>6
20	0	2243.42 ^{+0.08} _{-0.08}	3.47 ^{+0.07} _{-0.06}	2.22 ^{+0.16} _{-0.12}	>6
19	3	2281.61 ^{+1.97} _{-3.36}			3.01
20	1	2293.05 ^{+0.09} _{-0.09}			>6
20	2	2340.63 ^{+0.17} _{-0.16}			>6
21	0	2349.64 ^{+0.08} _{-0.09}	3.46 ^{+0.07} _{-0.06}	2.61 ^{+0.16} _{-0.17}	>6
20	3	2385.57 ^{+0.93} _{-1.16}			3.94
21	1	2399.39 ^{+0.08} _{-0.10}			>6
21	2	2446.71 ^{+0.16} _{-0.15}			>6
22	0	2455.69 ^{+0.11} _{-0.10}	3.46 ^{+0.07} _{-0.06}	3.03 ^{+0.19} _{-0.23}	>6
21	3	2493.08 ^{+1.24} _{-1.64}			3.66
22	1	2505.34 ^{+0.10} _{-0.11}			>6
22	2	2552.85 ^{+0.22} _{-0.24}			>6
23	0	2561.29 ^{+0.15} _{-0.14}	3.18 ^{+0.06} _{-0.06}	4.01 ^{+0.25} _{-0.18}	>6
22	3	2598.55 ^{+1.55} _{-1.66}			3.12
23	1	2611.20 ^{+0.13} _{-0.14}			>6
23	2	2658.63 ^{+0.33} _{-0.32}			>6
24	0	2666.49 ^{+0.24} _{-0.22}	2.72 ^{+0.06} _{-0.04}	5.23 ^{+0.26} _{-0.33}	>6
24	1	2717.47 ^{+0.18} _{-0.17}			>6
24	2	2765.05 ^{+0.40} _{-0.40}			>6
25	0	2773.06 ^{+0.30} _{-0.31}	2.41 ^{+0.05} _{-0.06}	6.75 ^{+0.38} _{-0.51}	>6
25	1	2824.15 ^{+0.27} _{-0.26}			>6
25	2	2872.28 ^{+0.55} _{-0.54}			>6
26	0	2879.34 ^{+0.56} _{-0.50}	1.96 ^{+0.06} _{-0.06}	7.60 ^{+0.63} _{-0.81}	>6
26	1	2931.24 ^{+0.35} _{-0.34}			>6
26	2	2978.49 ^{+0.80} _{-0.84}			3.78
27	0	2987.15 ^{+0.49} _{-0.49}	1.70 ^{+0.04} _{-0.06}	7.53 ^{+0.87} _{-0.74}	>6
27	1	3038.67 ^{+0.51} _{-0.53}			>6
27	2	3084.55 ^{+1.37} _{-1.59}			1.45
28	0	3092.80 ^{+0.88} _{-0.92}	1.46 ^{+0.07} _{-0.06}	8.85 ^{+1.44} _{-1.11}	>6
28	1	3145.65 ^{+0.61} _{-0.62}			4.92
28	2	3194.64 ^{+1.68} _{-1.27}			2.18
29	0	3204.41 ^{+0.88} _{-0.93}	0.98 ^{+0.08} _{-0.10}	5.87 ^{+2.75} _{-1.41}	3.81
29	1	3251.96 ^{+1.71} _{-1.47}			4.2
29	2	3302.59 ^{+2.16} _{-2.57}			1.22
30	0	3314.17 ^{+2.07} _{-2.02}	1.12 ^{+0.07} _{-0.08}	11.64 ^{+1.55} _{-1.65}	3.81

Table 7
Example of calculated mode frequency
difference ratios $r_{01,10,02}(n)$
(Equation 3.16) for KIC 6225718
(Saxo2). The complete table set (66
tables) is available in the online journal.

Ratio type	n	Ratio
r_{02}	14	$0.0888^{+0.0153}_{-0.0155}$
r_{02}	15	$0.0856^{+0.0092}_{-0.0115}$
r_{02}	16	$0.0883^{+0.0074}_{-0.0091}$
r_{02}	17	$0.0877^{+0.0081}_{-0.0066}$
r_{02}	18	$0.0853^{+0.0064}_{-0.0075}$
r_{02}	19	$0.0854^{+0.0041}_{-0.0049}$
r_{02}	20	$0.0821^{+0.0039}_{-0.0056}$
r_{02}	21	$0.0845^{+0.0062}_{-0.0039}$
r_{02}	22	$0.0849^{+0.0049}_{-0.0069}$
r_{02}	23	$0.0797^{+0.0063}_{-0.0062}$
r_{02}	24	$0.0742^{+0.0064}_{-0.0087}$
r_{02}	25	$0.0748^{+0.0081}_{-0.0101}$
r_{02}	26	$0.0656^{+0.0125}_{-0.0121}$
r_{02}	27	$0.0781^{+0.0161}_{-0.0135}$
r_{02}	28	$0.0754^{+0.0188}_{-0.0204}$
r_{02}	29	$0.0883^{+0.0260}_{-0.0257}$
r_{10}	12	$0.0413^{+0.0197}_{-0.0202}$
r_{01}	13	$0.0387^{+0.0117}_{-0.0208}$
r_{10}	13	$0.0374^{+0.0105}_{-0.0152}$
r_{01}	14	$0.0366^{+0.0070}_{-0.0083}$
r_{10}	14	$0.0349^{+0.0067}_{-0.0060}$
r_{01}	15	$0.0328^{+0.0040}_{-0.0042}$
r_{10}	15	$0.0323^{+0.0046}_{-0.0040}$
r_{01}	16	$0.0332^{+0.0034}_{-0.0043}$
r_{10}	16	$0.0331^{+0.0041}_{-0.0034}$
r_{01}	17	$0.0330^{+0.0044}_{-0.0053}$
r_{10}	17	$0.0329^{+0.0045}_{-0.0053}$
r_{01}	18	$0.0323^{+0.0049}_{-0.0043}$
r_{10}	18	$0.0327^{+0.0029}_{-0.0027}$
r_{01}	19	$0.0330^{+0.0034}_{-0.0031}$
r_{10}	19	$0.0331^{+0.0033}_{-0.0053}$
r_{01}	20	$0.0329^{+0.0022}_{-0.0041}$
r_{10}	20	$0.0325^{+0.0030}_{-0.0051}$
r_{01}	21	$0.0319^{+0.0022}_{-0.0042}$
r_{10}	21	$0.0313^{+0.0023}_{-0.0046}$
r_{01}	22	$0.0309^{+0.0029}_{-0.0025}$
r_{10}	22	$0.0300^{+0.0034}_{-0.0038}$
r_{01}	23	$0.0281^{+0.0037}_{-0.0033}$
r_{10}	23	$0.0252^{+0.0036}_{-0.0039}$
r_{01}	24	$0.0221^{+0.0050}_{-0.0052}$
r_{10}	24	$0.0211^{+0.0054}_{-0.0053}$
r_{01}	25	$0.0203^{+0.0058}_{-0.0077}$
r_{10}	25	$0.0182^{+0.0080}_{-0.0072}$
r_{01}	26	$0.0166^{+0.0085}_{-0.0076}$
r_{10}	26	$0.0177^{+0.0085}_{-0.0087}$
r_{01}	27	$0.0177^{+0.0088}_{-0.0118}$
r_{10}	27	$0.0136^{+0.0104}_{-0.0117}$
r_{01}	28	$0.0148^{+0.0104}_{-0.0137}$
r_{10}	28	$0.0285^{+0.0107}_{-0.0138}$
r_{01}	29	$0.0516^{+0.0185}_{-0.0198}$

Table 8
Example of calculated second
differences $\Delta_2\nu(n, l)$
(Equation 3.20) for KIC 6225718
(Saxo2). The complete table set
(66 tables) is available in the
online journal.

n	l	$\Delta_2\nu$ (μHz)
12	1	$1.49^{+1.43}_{-1.87}$
13	0	$1.64^{+2.97}_{-1.65}$
13	1	$1.20^{+1.49}_{-1.23}$
14	0	$0.37^{+0.83}_{-1.09}$
14	1	$0.13^{+0.54}_{-0.91}$
14	2	$-1.08^{+1.55}_{-1.28}$
15	0	$-0.23^{+0.52}_{-0.41}$
15	1	$-1.27^{+0.34}_{-0.45}$
15	2	$-0.96^{+0.92}_{-0.97}$
16	1	$-0.76^{+0.35}_{-0.32}$
16	2	$0.14^{+0.61}_{-0.78}$
16	0	$-1.35^{+0.25}_{-0.40}$
17	0	$0.02^{+0.27}_{-0.32}$
17	2	$0.97^{+0.57}_{-0.51}$
17	1	$0.69^{+0.38}_{-0.20}$
18	2	$1.25^{+0.40}_{-0.41}$
18	1	$1.13^{+0.21}_{-0.28}$
18	0	$1.30^{+0.25}_{-0.29}$
19	2	$-0.15^{+0.39}_{-0.42}$
19	1	$0.82^{+0.26}_{-0.19}$
19	0	$0.89^{+0.25}_{-0.21}$
20	2	$0.13^{+0.41}_{-0.37}$
20	3	$-1.08^{+1.55}_{-1.28}$
20	1	$0.15^{+0.24}_{-0.18}$
20	0	$0.42^{+0.19}_{-0.23}$
21	3	$-0.96^{+0.92}_{-0.97}$
21	1	$-0.37^{+0.20}_{-0.24}$
21	2	$0.16^{+0.33}_{-0.48}$
21	0	$-0.16^{+0.21}_{-0.23}$
22	1	$-0.09^{+0.27}_{-0.27}$
22	2	$-0.42^{+0.63}_{-0.50}$
22	0	$-0.45^{+0.27}_{-0.26}$
23	2	$0.43^{+1.06}_{-0.53}$
23	0	$-0.44^{+0.42}_{-0.35}$
23	1	$0.38^{+0.37}_{-0.30}$
24	0	$1.38^{+0.54}_{-0.61}$
24	2	$0.72^{+1.08}_{-0.96}$
24	1	$0.40^{+0.47}_{-0.41}$
25	0	$-0.20^{+0.73}_{-0.96}$
25	2	$-1.27^{+1.56}_{-1.17}$
25	1	$0.47^{+0.59}_{-0.69}$
26	2	$-0.15^{+2.13}_{-1.96}$
26	0	$1.51^{+1.17}_{-1.26}$
26	1	$0.36^{+0.85}_{-0.90}$
27	0	$-1.98^{+1.11}_{-1.70}$
27	1	$-0.35^{+1.18}_{-1.34}$
27	2	$4.80^{+2.77}_{-4.22}$
28	2	$-4.34^{+6.80}_{-3.40}$
28	1	$-0.51^{+1.68}_{-2.18}$
28	0	$6.76^{+1.55}_{-2.89}$
29	0	$-1.46^{+2.12}_{-2.99}$

in the right panel of Figure 26; (4) a plot of the derived second differences $\Delta_2\nu(n, l)$ as shown in Figure 5 for KIC 6225718 (Saxo2), but without model fits; (5) a plot of the extracted mode amplitudes and line widths as shown in Figure 27.

6. CONCLUSIONS

In this paper we have presented the mode parameters for a sample of 66 MS solar-like oscillators, the frequencies of which are modeled in Paper II. In addition to the individual mode frequencies we have constructed frequency difference ratios and their correlations for the use in modeling efforts. We also report for each star the values for the mode line widths, amplitudes, and visibilities. For each of these quantities we have derived summary parameters and descriptions, such as the average seismic parameters $\Delta\nu$ and ν_{\max} and the behavior of mode line widths against frequency.

The reported parameters were derived through peak-bagging of the power spectra using an MCMC optimization scheme. This resulted in posterior probability distributions for each of the included parameters, from which credible intervals and correlations were directly obtained. We found that the derived frequency uncertainties adhere to the expectations from theory in terms of S/N, observing time, and line widths, and are only higher by a factor of ~ 1.2 compared to estimates from MLE. This observation will be useful for predicting seismic modeling yields for future missions such as TESS and PLATO. As a quality control on the detection of the reported modes, we performed a Bayesian hypothesis testing that for each mode gave the probability of detection (Davies et al. 2016; Appourchaux et al. 2012a). Our main conclusions are as follows:

- The derived values for $\Delta\nu$ and ν_{\max} agree with empirically derived relations from the *Kepler* mission. We derived parameters from an extended version of the standard asymptotic frequency relations, including mode ridge curvatures and variations of $\Delta\nu$ and small frequency separations. From the small frequency separations we further found that most stars deviate from the asymptotic description by an amount that correlates with the evolutionary state of the star, i.e., the central hydrogen content.
- The measured amplitudes at ν_{\max} for our sample largely follow the expected trend from empirical relations from *Kepler*. We also identified a systematic offset of approximately -6% between the maximum amplitudes obtained from the modes and those obtained from the smoothing method by Kjeldsen et al. (2008b). This corroborates the findings by Verner et al. (2011). This systematic offset should be corrected for whenever the two methods are compared.
- For the line widths we adopted the frequency dependence of Appourchaux et al. (2014a) given by an overall power law dependence and a Lorentzian dip near ν_{\max} . We fitted this relation for all stars and were able to derive simple relations between the parameters of the fit and T_{eff} and ν_{\max} . These were found to confirm the results by Appourchaux

et al. (2014a). Such relations will be useful for future simulations of solar-like oscillators and may be compared to theory. We also obtained a fit for the T_{eff} dependence of the line width at ν_{\max} , complementing our values with line widths from 42 giants in NGC 6819 (Handberg et al., submitted). The obtained dependence largely agreed with that found by Appourchaux et al. (2012b), except for stars with low T_{eff} .

- Concerning the estimated mode visibilities, we found that those for $l = 1$ were slightly lower than expected from the theoretical calculations by Balot et al. (2011), whereas those for $l = 2$ and 3 were larger than expected, especially for the $l = 3$ modes. We found no overall dependence on T_{eff} , which is also evident from the fact that Mosser et al. (2012) found a mean value of the total visibility at nearly the same level as here for *Kepler* giants, which have T_{eff} values lower by about 1000 – 2000 K. Some structure was observed in the visibilities against T_{eff} and mass, but it was not possible to say directly if this is simply due to scatter from the measurements or if they have some underlying physical explanation. Applying the method of Lund et al. (2014a) enabled us to identify power from $l = 3$ modes in most stars, and for some high S/N targets even for $l = 4$.

ACKNOWLEDGMENTS

Funding for this Discovery mission is provided by NASA's Science Mission Directorate. The authors acknowledge the dedicated team behind the *Kepler* and K2 missions, without whom this work would not have been possible. We thank Thierry Appourchaux for useful discussions on the properties of the line width fits, Ian Roxburgh for discussions on mode frequencies, and Enrico Corsaro for supplying line widths for a set of 19 red giants. We thank Jens Jessen-Hansen for inspiration to the paper title. Funding for the Stellar Astrophysics Centre (SAC) is provided by The Danish National Research Foundation (Grant DNR106). The research was supported by the ASTERISK project (ASTERoseismic Investigations with SONG and *Kepler*) funded by the European Research Council (Grant agreement no.: 267864). MNL acknowledges the support of The Danish Council for Independent Research | Natural Science (Grant DFF-4181-00415). VSA and TRW acknowledges support from VILLUM FONDEN (research grant 10118). GRD and WJC acknowledge the support of the UK Science and Technology Facilities Council (STFC). SB is partially supported by NSF grant AST-1514676 and NASA grant NNX16A109G. DH acknowledges support by the Australian Research Council's Discovery Projects funding scheme (project number DE140101364) and support by the National Aeronautics and Space Administration under Grant NNX14AB92G issued through the *Kepler* Participating Scientist Program. WHB acknowledges research funding by Deutsche Forschungsgemeinschaft (DFG) under grant SFB 963/1 "Astrophysical flow instabilities and turbulence" (Project A18).

REFERENCES

- Aerts, C., Christensen-Dalsgaard, J., & Kurtz, D. W. 2010, *Asteroseismology*, Astronomy and Astrophysics Library (Springer Netherlands)
- Andersen, B. N., Leifsen, T. E., & Toutain, T. 1994, *Sol. Phys.*, 152, 247
- Anderson, E. R., Duvall, Jr., T. L., & Jefferies, S. M. 1990, *ApJ*, 364, 699
- Anguera Gubau, M., Palle, P. L., Perez Hernandez, F., Regulo, C., & Roca Cortes, T. 1992, *A&A*, 255, 363
- Appourchaux, T. 2003a, *A&A*, 412, 903

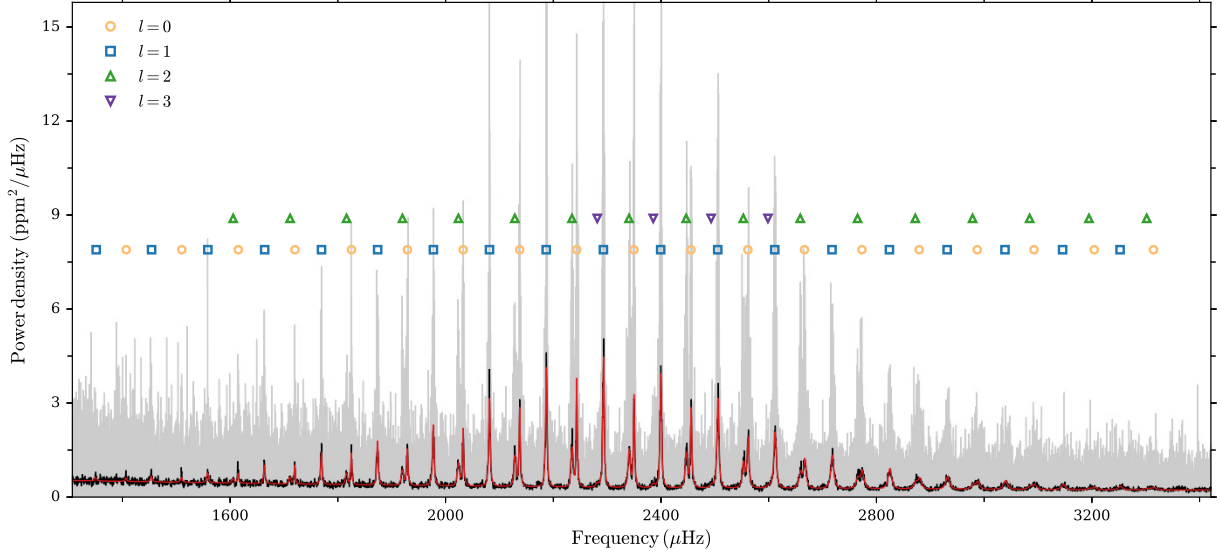


Figure 25. Example of the peak-bagging fit for KIC 6225718 (Saxo2). The complete figure set (66 figures) is available in the online journal. The power density spectrum is shown in grey with a $1\mu\text{Hz}$ Epanechnikov smoothed version overlain in black, and with the fitted power spectrum model given by the red curve. The markers indicate the frequency and angular degree of the fitted modes.

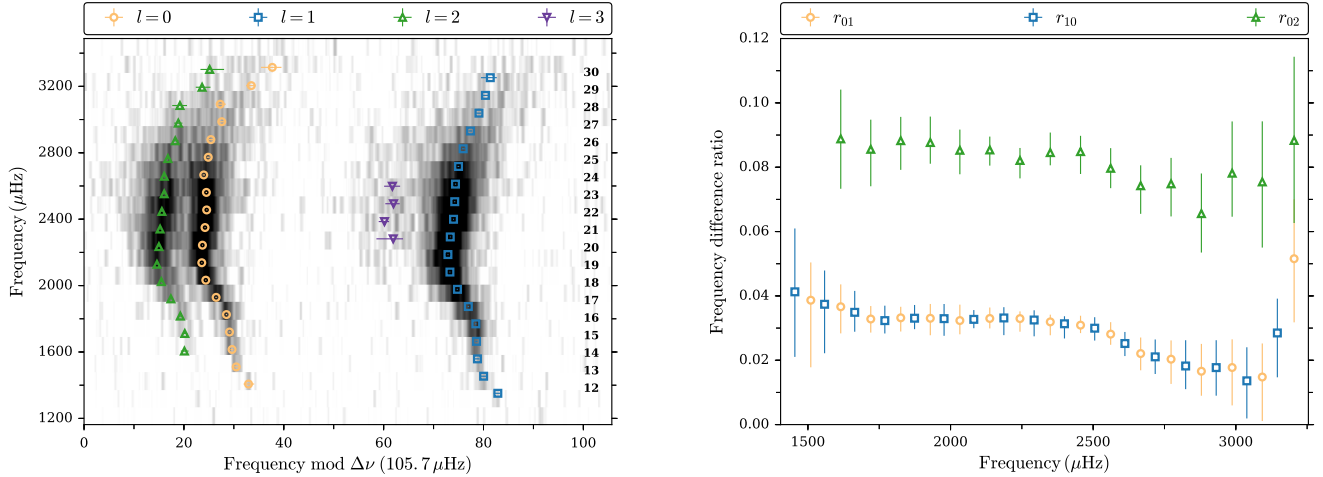


Figure 26. Left: example of échelle diagram for KIC 6225718 (Saxo2). The complete figure set (66 figures) is available in the online journal. The power spectrum used has been background corrected and smoothed by a $1\mu\text{Hz}$ Epanechnikov filter. The color scale indicates the power to background level, going from white at low level to black at high levels. The number on the right hand of the plot gives the radial order n of the $l = 0$ modes. Right: frequency difference ratios for KIC 6225718 as a function of the central frequency of the respective ratios (see Equation 3.16).

—. 2003b, *Ap&SS*, 284, 109
 —. 2004, *A&A*, 428, 1039
 Appourchaux, T., & Virgo Team. 1998, in *ESA Special Publication*, Vol. 418, *Structure and Dynamics of the Interior of the Sun and Sun-like Stars*, ed. S. Korzennik, 99
 Appourchaux, T., Chaplin, W. J., García, R. A., et al. 2012a, *A&A*, 543, A54
 Appourchaux, T., Benomar, O., Gruberbauer, M., et al. 2012b, *A&A*, 537, A134
 Appourchaux, T., Antia, H. M., Benomar, O., et al. 2014a, *A&A*, 566, A20
 —. 2014b, *ArXiv e-prints* 1403.7046
 —. 2016, *A&A*, 595, C2
 Arentoft, T., Kjeldsen, H., Bedding, T. R., et al. 2008, *ApJ*, 687, 1180
 Baglin, A., Auvergne, M., Barge, P., et al. 2009, in *IAU Symposium*, Vol. 253, *IAU Symposium*, ed. F. Pont, D. Sasselov, & M. J. Holman, 71–81

Baldner, C. S., & Schou, J. 2012, *ApJ*, 760, L1
 Ball, W. H., Beeck, B., Cameron, R. H., & Gizon, L. 2016, *A&A*, 592, A159
 Ball, W. H., & Gizon, L. 2014, *A&A*, 568, A123
 Ballot, J., Appourchaux, T., Toutain, T., & Guittet, M. 2008, *A&A*, 486, 867
 Ballot, J., Barban, C., & van't Veer-Menneret, C. 2011, *A&A*, 531, A124
 Balmforth, N. J. 1992, *MNRAS*, 255, 603
 Basu, S., Antia, H. M., & Narasimha, D. 1994, *MNRAS*, 267, 209
 Basu, S., Chaplin, W. J., & Elsworth, Y. 2010, *ApJ*, 710, 1596
 Basu, S., Mazumdar, A., Antia, H. M., & Demarque, P. 2004, *MNRAS*, 350, 277
 Batchelor, G. K. 1953, *The Theory of Homogeneous Turbulence*
 Baudin, F., Barban, C., Belkacem, K., et al. 2011, *A&A*, 529, A84
 Bedding, T. R. 2011, *ArXiv e-prints* 1107.1723
 Bedding, T. R., Kjeldsen, H., Butler, R. P., et al. 2004, *ApJ*, 614, 380

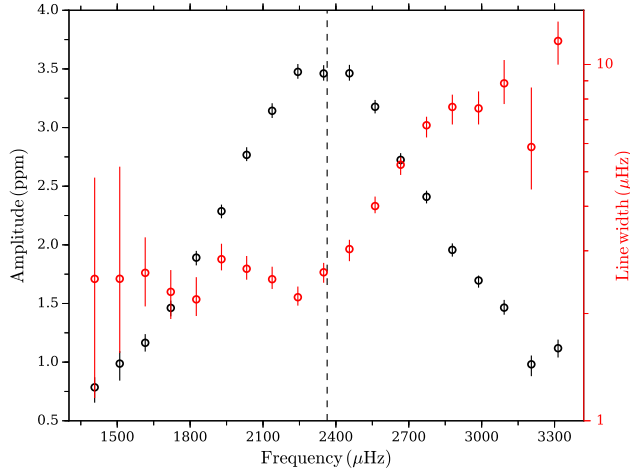


Figure 27. Example of the extracted mode amplitudes and line widths for KIC 6225718 (Saxo2). The complete figure set (66 figures) is available in the online journal. Plotted in black are the amplitudes (left ordinate) and in red the line widths (right ordinate). The vertical dashed line gives the value for ν_{\max} .

Bedding, T. R., Kjeldsen, H., Reetz, J., & Barbuy, B. 1996, *MNRAS*, 280, 1155

Bedding, T. R., Kjeldsen, H., Campante, T. L., et al. 2010, *ApJ*, 713, 935

Belkacem, K., Appourchaux, T., Baudin, F., et al. 2013, in *European Physical Journal Web of Conferences*, Vol. 43, European Physical Journal Web of Conferences, 3009

Belkacem, K., Dupret, M. A., Baudin, F., et al. 2012, *A&A*, 540, L7

Bellinger, E. P., Angelou, G. C., Hekker, S., et al. 2016, *ArXiv e-prints* 1607.02137

Benomar, O., Appourchaux, T., & Baudin, F. 2009, *A&A*, 506, 15

Boggs, P. T., & Rogers, J. E. 1990, in *Contemp. Math.*, Vol. 112, Statistical analysis of measurement error models and applications (Arcata, CA, 1989) (Amer. Math. Soc., Providence, RI), 183–194

Buchhave, L. A., Latham, D. W., Johansen, A., et al. 2012, *Nature*, 486, 375

Campante, T. L., Barclay, T., Swift, J. J., et al. 2015, *ApJ*, 799, 170

Casagrande, L., Silva Aguirre, V., Stello, D., et al. 2014, *ApJ*, 787, 110

Chaplin, W. J., Elsworth, Y., Houdek, G., & New, R. 2007, *MNRAS*, 377, 17

Chaplin, W. J., Elsworth, Y., Isaak, G. R., et al. 1997, *MNRAS*, 288, 623

Chaplin, W. J., Elsworth, Y., New, R., & Toutain, T. 2008a, *MNRAS*, 384, 1668

Chaplin, W. J., Houdek, G., Appourchaux, T., et al. 2008b, *A&A*, 485, 813

Chaplin, W. J., Houdek, G., Karoff, C., Elsworth, Y., & New, R. 2009, *A&A*, 500, L21

Chaplin, W. J., & Miglio, A. 2013, *ARA&A*, 51, 353

Chaplin, W. J., Kjeldsen, H., Christensen-Dalsgaard, J., et al. 2011a, *Science*, 332, 213

Chaplin, W. J., Bedding, T. R., Bonanno, A., et al. 2011b, *ApJ*, 732, L5

Chaplin, W. J., Kjeldsen, H., Bedding, T. R., et al. 2011c, *ApJ*, 732, 54

Chaplin, W. J., Basu, S., Huber, D., et al. 2014, *ApJS*, 210, 1

Chaplin, W. J., Lund, M. N., Handberg, R., et al. 2015, *PASP*, 127, 1038

Christensen-Dalsgaard, J. 1991, Some aspects of the theory of solar oscillations, <http://cds.cern.ch/record/226720>

Christensen-Dalsgaard, J. 1993, in *Astronomical Society of the Pacific Conference Series*, Vol. 42, GONG 1992. Seismic Investigation of the Sun and Stars, ed. T. M. Brown, 347

—. 2008, *Ap&SS*, 316, 13

—. 2016, *ArXiv e-prints* 1602.06838

Christensen-Dalsgaard, J., & Gough, D. O. 1982, *MNRAS*, 198, 141

Christensen-Dalsgaard, J., & Houdek, G. 2010, *Ap&SS*, 328, 51

Christensen-Dalsgaard, J., Kjeldsen, H., Brown, T. M., et al. 2010, *ApJ*, 713, L164

Claret, A., & Bloemen, S. 2011, *A&A*, 529, A75

Corsaro, E., De Ridder, J., & García, R. A. 2015, *A&A*, 579, A83

Corsaro, E., Fröhlich, H.-E., Bonanno, A., et al. 2013, *MNRAS*, 430, 2313

Corsaro, E., Stello, D., Huber, D., et al. 2012, *ApJ*, 757, 190

Cramér, H. 1946, *Mathematical Methods of Statistics*, Princeton Mathematical Series, vol. 9 (Princeton University Press, Princeton, N. J.), xvi+575

Cunha, M. S., & Metcalfe, T. S. 2007, *ApJ*, 666, 413

Davies, G. R., Broomhall, A. M., Chaplin, W. J., Elsworth, Y., & Hale, S. J. 2014a, *MNRAS*, 439, 2025

Davies, G. R., Handberg, R., Miglio, A., et al. 2014b, *MNRAS*, 445, L94

Davies, G. R., Aguirre, V. S., Bedding, T. R., et al. 2016, *MNRAS*, 456, 2183

Deheuvels, S., & Michel, E. 2011, *A&A*, 535, A91

Deheuvels, S., Bruntt, H., Michel, E., et al. 2010, *A&A*, 515, A87

Deming, W. E. 1943, *Statistical Adjustment of Data* (Wiley & Sons, Inc., N. Y.), x+261

Duvall, Jr., T. L., & Harvey, J. W. 1986, in *NATO ASIC Proc. 169: Seismology of the Sun and the Distant Stars*, ed. D. O. Gough, 105–116

Dziembowski, W. 1977, *ACTAA*, 27, 203

Elsworth, Y., Howe, R., Isaak, G. R., McLeod, C. P., & New, R. 1990, *Nature*, 347, 536

Epanechnikov, V. A. 1969, *Theory of Probability and Its Applications*, 14

Farr, W. M., Gair, J. R., Mandel, I., & Cutler, C. 2015, *Phys. Rev. D*, 91, 023005

Fletcher, S. T., Chaplin, W. J., Elsworth, Y., & New, R. 2009, *ApJ*, 694, 144

Fletcher, S. T., Chaplin, W. J., Elsworth, Y., Schou, J., & Buzasi, D. 2006, *MNRAS*, 371, 935

Foreman-Mackey, D., Hogg, D. W., Lang, D., & Goodman, J. 2013, *PASP*, 125, 306

Fröhlich, C. 2009, *A&A*, 501, L27

Fröhlich, C., Romero, J., Roth, H., et al. 1995, *Sol. Phys.*, 162, 101

Frohlich, C., Andersen, B. N., Appourchaux, T., et al. 1997, *Sol. Phys.*, 170, 1

Fűrész, G. 2008, PhD thesis, Univertisy of Szeged, Hungary

Gabriel, M. 1989, *A&A*, 226, 278

—. 1994, *A&A*, 287, 685

Geweke, J. 1992, in *Bayesian statistics*, 4 (Peñíscola, 1991) (Oxford Univ. Press, New York), 169–193

Gilliland, R. L., Brown, T. M., Christensen-Dalsgaard, J., et al. 2010, *PASP*, 122, 131

Gizon, L., & Solanki, S. K. 2003, *ApJ*, 589, 1009

Goldreich, P., & Kumar, P. 1991, *ApJ*, 374, 366

Goodman, J., & Weare, J. 2010, *Comm. App. Math. Comp. Sci.*, 5, 65

Gough, D. O. 1986, in *Hydrodynamic and Magnetodynamic Problems in the Sun and Stars*, ed. Y. Osaki, 117

Grec, G., Fossat, E., & Pomerantz, M. A. 1983, *Sol. Phys.*, 82, 55

Handberg, R., & Campante, T. L. 2011, *A&A*, 527, A56

Handberg, R., & Lund, M. N. 2014, *MNRAS*, 445, 2698

Harvey, J. W., Duvall, Jr., T. L., Jefferies, S. M., & Pomerantz, M. A. 1993, in *ASP Conf. Ser.*, Vol. 42, GONG 1992. Seismic Investigation of the Sun and Stars, ed. T. M. Brown, 111

Hastie, T., Tibshirani, R., & Friedman, J. 2009, *The Elements of Statistical Learning: Data Mining, Inference, and Prediction*, Second Edition, Springer Series in Statistics (Springer Science & Business Media)

Hekker, S., Broomhall, A.-M., Chaplin, W. J., et al. 2010, *MNRAS*, 402, 2049

Hinton, G., McClelland, J. L., & Elman, R. D. 1986, Distributed representations. In *Parallel Distributed Representations: Explorations in the Microstructure of Cognition*, ed. M. J. L. Rumelhart E., Vol. 1 (Cambridge, MA, MIT Press), 77–109

Hogg, D. W., Bovy, J., & Lang, D. 2010, *ArXiv e-prints* 1008.4686

Houdek, G. 1996, PhD thesis, "Ph.D. Thesis, Formal- und Naturwissenschaftliche Fakultät"at der Universität Wien, (1996)"

- . 2006, ArXiv e-prints 0612024
- Houdek, G., Balmforth, N. J., Christensen-Dalsgaard, J., & Gough, D. O. 1999, *A&A*, 351, 582
- Houdek, G., & Gough, D. O. 2007, *MNRAS*, 375, 861
- Howell, S. B., Rowe, J. F., Bryson, S. T., et al. 2012, *ApJ*, 746, 123
- Huber, D., Stello, D., Bedding, T. R., et al. 2009, *CoAst*, 160, 74
- Huber, D., Bedding, T. R., Stello, D., et al. 2011, *ApJ*, 743, 143
- Huber, D., Chaplin, W. J., Christensen-Dalsgaard, J., et al. 2013, *ApJ*, 767, 127
- Kallinger, T., De Ridder, J., Hekker, S., et al. 2014, *A&A*, 570, A41
- Karoff, C., Campante, T. L., Ballot, J., et al. 2013, *ApJ*, 767, 34
- Kass, R. E., & Raftery, A. E. 1995, *J. Amer. Statist. Assoc.*, 90, 773
- Kjeldsen, H. 1992, PhD thesis, University of Aarhus, Denmark, (1992)
- Kjeldsen, H., & Bedding, T. R. 1995, *A&A*, 293, 87
- . 2011, *A&A*, 529, L8
- Kjeldsen, H., Bedding, T. R., & Christensen-Dalsgaard, J. 2008a, *ApJ*, 683, L175
- Kjeldsen, H., Christensen-Dalsgaard, J., Handberg, R., et al. 2010, *AN*, 331, 966
- Kjeldsen, H., & Frandsen, S. 1992, *PASP*, 104, 413
- Kjeldsen, H., Bedding, T. R., Butler, R. P., et al. 2005, *ApJ*, 635, 1281
- Kjeldsen, H., Bedding, T. R., Arentoft, T., et al. 2008b, *ApJ*, 682, 1370
- Komm, R. W., Howe, R., & Hill, F. 2000a, *ApJ*, 531, 1094
- . 2000b, *ApJ*, 543, 472
- Kumar, P., Franklin, J., & Goldreich, P. 1988, *ApJ*, 328, 879
- Lebreton, Y., & Goupil, M. J. 2014, *A&A*, 569, A21
- Libbrecht, K. G. 1992, *ApJ*, 387, 712
- Libbrecht, K. G., & Woodard, M. F. 1991, *Science*, 253, 152
- Lund, M. N., Chaplin, W. J., & Kjeldsen, H. 2012, *MNRAS*, 427, 1784
- Lund, M. N., Kjeldsen, H., Christensen-Dalsgaard, J., Handberg, R., & Silva Aguirre, V. 2014a, *ApJ*, 782, 2
- Lund, M. N., Miesch, M. S., & Christensen-Dalsgaard, J. 2014b, *ApJ*, 790, 121
- Lund, M. N., Lundkvist, M., Silva Aguirre, V., et al. 2014c, *A&A*, 570, A54
- Lund, M. N., Chaplin, W. J., Casagrande, L., et al. 2016a, ArXiv e-prints 1608.07292
- Lund, M. N., Basu, S., Silva Aguirre, V., et al. 2016b, *MNRAS*, 463, 2600
- Mathur, S., García, R. A., Régulo, C., et al. 2010, *A&A*, 511, A46
- Mathur, S., Bruntt, H., Catala, C., et al. 2013, *A&A*, 549, A12
- Mazumdar, A., Monteiro, M. J. P. F. G., Ballot, J., et al. 2014, *ApJ*, 782, 18
- Metcalfe, T. S., Creevey, O. L., & Davies, G. R. 2015, *ApJ*, 811, L37
- Metcalfe, T. S., Chaplin, W. J., Appourchaux, T., et al. 2012, *ApJ*, 748, L10
- Metcalfe, T. S., Creevey, O. L., Doğan, G., et al. 2014, *ApJS*, 214, 27
- Michel, E., Samadi, R., Baudin, F., et al. 2009, *A&A*, 495, 979
- Mosser, B., Belkacem, K., Goupil, M. J., et al. 2011, *A&A*, 525, L9
- Mosser, B., Elsworth, Y., Hekker, S., et al. 2012, *A&A*, 537, A30
- Mosser, B., Michel, E., Belkacem, K., et al. 2013, *A&A*, 550, A126
- Neckel, H., & Labs, D. 1994, *Sol. Phys.*, 153, 91
- Otí Floranes, H., Christensen-Dalsgaard, J., & Thompson, M. J. 2005, *MNRAS*, 356, 671
- Pasman, V. R., & Shevlyakov, G. L. 1987, *Avtomat. i Telemekh.*, 70
- Pearson, K. 1895, "Note on Regression and Inheritance in the Case of Two Parents", *Proceedings of the Royal Society (Royal Society)*
- Pérez Hernández, F., & Christensen-Dalsgaard, J. 1998, *MNRAS*, 295, 344
- Pinsonneault, M. H., An, D., Molenda-Żakowicz, J., et al. 2012, *ApJS*, 199, 30
- Pinsonneault, M. H., Elsworth, Y., Epstein, C., et al. 2014, *ApJS*, 215, 19
- Press, W. H., Teukolsky, S. A., Vetterling, W. T., & Flannery, B. P. 1993, *Numerical Recipes in FORTRAN; The Art of Scientific Computing*, 2nd edn. (New York, NY, USA: Cambridge University Press)
- Ramírez, I., Meléndez, J., & Asplund, M. 2009, *A&A*, 508, L17
- Rao, C. R. 1945, *Bull. Calcutta Math. Soc.*, 37, 81
- Rauer, H., Catala, C., Aerts, C., et al. 2013, ArXiv e-prints 1310.0696
- Ricker, G. R., Winn, J. N., Vanderspek, R., et al. 2014, in *Society of Photo-Optical Instrumentation Engineers (SPIE) Conference Series*, Vol. 9143, Society of Photo-Optical Instrumentation Engineers (SPIE) Conference Series, 20
- Roxburgh, I. W. 2005, *A&A*, 434, 665
- . 2015, *A&A*, 581, A58
- . 2016, *A&A*, 585, A63
- Roxburgh, I. W., & Vorontsov, S. V. 2003, *A&A*, 411, 215
- . 2013, *A&A*, 560, A2
- Salabert, D., Ballot, J., & García, R. A. 2011, *A&A*, 528, A25
- Samadi, R., Georgobiani, D., Trampedach, R., et al. 2007, *A&A*, 463, 297
- Samadi, R., Goupil, M.-J., Alecian, E., et al. 2005, *J. Astrophys. Astron.*, 26, 171
- Scherrer, P. H., Wilcox, J. M., Christensen-Dalsgaard, J., & Gough, D. O. 1983, *Sol. Phys.*, 82, 75
- Schou, J. 2014, in *IAU Symposium*, Vol. 301, IAU Symposium, ed. J. A. Guzik, W. J. Chaplin, G. Handler, & A. Pigulski, 481–482
- Schou, J. 2015, *A&A*, 580, L11
- Shevlyakov, G. L., & Smirnov, P. 2011, *AJS*, 40, 147
- Silva Aguirre, V., Ballot, J., Serenelli, A. M., & Weiss, A. 2011, *A&A*, 529, A63
- Silva Aguirre, V., Casagrande, L., Basu, S., et al. 2012, *ApJ*, 757, 99
- Silva Aguirre, V., Basu, S., Brandão, I. M., et al. 2013, *ApJ*, 769, 141
- Silva Aguirre, V., Davies, G. R., Basu, S., et al. 2015, *MNRAS*, 452, 2127
- Silva Aguirre, V., Lund, M. N., Antia, H. M., et al. 2016, ArXiv e-prints 1611.08776
- Sing, D. K. 2010, *A&A*, 510, A21
- Spearmen, C. 1904, *American Journal of Psychology*, 15, 88
- Stello, D., Huber, D., Kallinger, T., et al. 2011, *ApJ*, 737, L10
- Szentgyorgyi, A. H., & Furész, G. 2007, in *Revista Mexicana de Astronomía y Astrofísica Conference Series*, Vol. 28, Revista Mexicana de Astronomía y Astrofísica Conference Series, ed. S. Kurtz, 129–133
- Tassoul, M. 1980, *ApJS*, 43, 469
- Torres, G., Fischer, D. A., Sozzetti, A., et al. 2012, *ApJ*, 757, 161
- Toutain, T., & Appourchaux, T. 1994, *A&A*, 289, 649
- Toutain, T., & Fröhlich, C. 1992, *A&A*, 257, 287
- Trampedach, R., Stein, R. F., Christensen-Dalsgaard, J., Nordlund, Å., & Asplund, M. 2014, *MNRAS*, 442, 805
- Van Eylen, V., Lund, M. N., Silva Aguirre, V., et al. 2014, *ApJ*, 782, 14
- Verma, K., Antia, H. M., Basu, S., & Mazumdar, A. 2014, *ApJ*, 794, 114
- Verner, G. A., Elsworth, Y., Chaplin, W. J., et al. 2011, *MNRAS*, 415, 3539
- Weiss, A., & Schlattl, H. 2008, *Ap&SS*, 316, 99
- White, T. R., Bedding, T. R., Stello, D., et al. 2011a, *ApJ*, 743, 161
- . 2011b, *ApJ*, 742, L3
- White, T. R., Bedding, T. R., Gruberbauer, M., et al. 2012, *ApJ*, 751, L36