



**HAL**  
open science

## A synthetic kisspeptin analog that triggers ovulation and advances puberty

Caroline Decourt, Vincent Robert, Karine Anger, Mathieu Galibert, Jean-Baptiste Madinier, Xinhuai Liu, Hugues Dardente, Didier Lomet, Agnès Delmas, Alain Caraty, et al.

### ► To cite this version:

Caroline Decourt, Vincent Robert, Karine Anger, Mathieu Galibert, Jean-Baptiste Madinier, et al.. A synthetic kisspeptin analog that triggers ovulation and advances puberty. *Scientific Reports*, 2016, 6 (1), pp.26908. 10.1038/srep26908 . hal-01406943

**HAL Id: hal-01406943**

**<https://hal.science/hal-01406943>**

Submitted on 26 Sep 2017

**HAL** is a multi-disciplinary open access archive for the deposit and dissemination of scientific research documents, whether they are published or not. The documents may come from teaching and research institutions in France or abroad, or from public or private research centers.

L'archive ouverte pluridisciplinaire **HAL**, est destinée au dépôt et à la diffusion de documents scientifiques de niveau recherche, publiés ou non, émanant des établissements d'enseignement et de recherche français ou étrangers, des laboratoires publics ou privés.

# SCIENTIFIC REPORTS



OPEN

## A synthetic kisspeptin analog that triggers ovulation and advances puberty

Received: 16 February 2016

Accepted: 09 May 2016

Published: 01 June 2016

C. Decourt<sup>1</sup>, V. Robert<sup>1</sup>, K. Anger<sup>1</sup>, M. Galibert<sup>2</sup>, J.-B. Madinier<sup>2</sup>, X. Liu<sup>3</sup>, H. Dardente<sup>1</sup>, D. Lomet<sup>1</sup>, A. F. Delmas<sup>2</sup>, A. Caraty<sup>1</sup>, A. E. Herbison<sup>3</sup>, G. M Anderson<sup>3</sup>, V. Aucagne<sup>2</sup> & M. Beltramo<sup>1</sup>

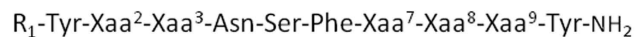
The neuropeptide kisspeptin and its receptor, KiSS1R, govern the reproductive timeline of mammals by triggering puberty onset and promoting ovulation by stimulating gonadotrophin-releasing hormone (GnRH) secretion. To overcome the drawback of kisspeptin short half-life we designed kisspeptin analogs combining original modifications, triazole peptidomimetic and albumin binding motif, to reduce proteolytic degradation and to slow down renal clearance, respectively. These analogs showed improved *in vitro* potency and dramatically enhanced pharmacodynamics. When injected intramuscularly into ewes (15 nmol/ewe) primed with a progestogen, the best analog (compound 6, C6) induced synchronized ovulations in both breeding and non-breeding seasons. Ovulations were fertile as demonstrated by the delivery of lambs at term. C6 was also fully active in both female and male mice but was completely inactive in KiSS1R KO mice. Electrophysiological recordings of GnRH neurons from brain slices of GnRH-GFP mice indicated that C6 exerted a direct excitatory action on GnRH neurons. Finally, in prepubertal female mice daily injections (0.3 nmol/mouse) for five days significantly advanced puberty. C6 ability to trigger ovulation and advance puberty demonstrates that kisspeptin analogs may find application in the management of livestock reproduction and opens new possibilities for the treatment of reproductive disorders in humans.

Suboptimal reproduction in livestock and reproductive disorders in humans are problems that typically share a common cause: an inadequate activity of the hypothalamus-pituitary axis leading to an insufficient secretion of gonadotropins (luteinizing hormone, LH, and follicle stimulating hormone, FSH). The hypothalamic neuropeptide kisspeptin (Kp) potently stimulates gonadotropin release by triggering the secretion of GnRH (gonadotropin releasing hormone)<sup>1</sup>.

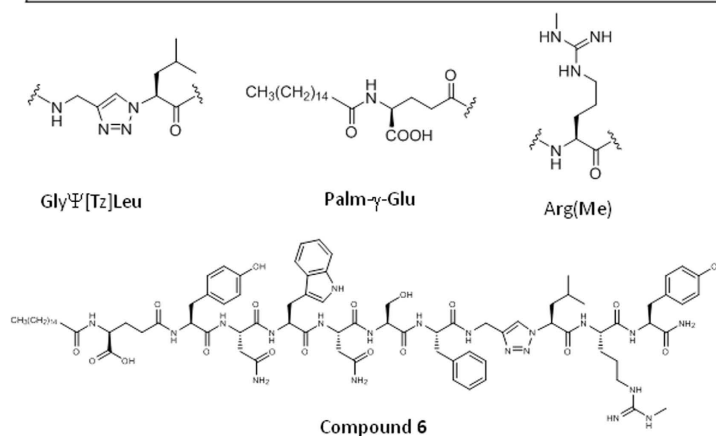
Several forms of endogenous Kp (named according to their length in amino acids Kp54, Kp14, Kp13, and Kp10) have been described<sup>1</sup>. Two of them, Kp10 and Kp54, were used to probe Kp potential applications. In ewes during the non-breeding season, a condition characterized by low levels of circulating gonadotropins and therefore resembling gonadotropic deficiency observed in some human pathology, a continuous perfusion of Kp10 induced ovulation<sup>2</sup>. This is in line with the restoration of gonadotropin pulsatility following continuous Kp10 infusion in patients affected by hypogonadotropic hypogonadism (HH), induced by loss-of-function mutation in neurokinin B (NKB) or its receptor (TAC3R)<sup>3</sup>. In addition in women affected by hypothalamic amenorrhea Kp54 injections had positive effect stimulating an increase of LH<sup>4,5</sup>. Furthermore, in juvenile monkeys (*Macaca mulatta*) repeated hourly administration of Kp10 over a 48 hours period triggered LH and FSH release suggesting that the transition from juvenile to pubertal state is controlled by KiSS1R activation<sup>6</sup>. Further supporting this observation chronic central administration of Kp10 in female rats induced an advanced vaginal opening<sup>7</sup>. These observations support the concept that the Kp system is a key lever to control reproduction and is a therapeutic target.

However, the use of the endogenous peptides has clear limits. Desired effects were achieved only by perfusion (intravenous or intracerebroventricular) or by hourly injection. These dosing regimens are unsuitable for

<sup>1</sup>UMR Physiologie de la Reproduction et des Comportements (INRA, UMR85; CNRS, UMR7247, Université François Rabelais Tours, IFCE) F-37380 Nouzilly, France. <sup>2</sup>Centre de Biophysique Moléculaire (CNRS UPR 4301) F-45071 Orléans cedex 2, France. <sup>3</sup>Centre for Neuroendocrinology, PO Box 913, University of Otago School of Medical Sciences Dunedin 9054, New Zealand. Correspondence and requests for materials should be addressed to M.B. (email: Massimiliano.Beltramo@tours.inra.fr)



Compound	R <sub>1</sub>	Xaa <sup>2</sup>	Xaa <sup>3</sup>	Xaa <sup>7</sup> -Xaa <sup>8</sup>	Xaa <sup>9</sup>	EC <sub>50</sub> (nM)
Kp10 <b>1</b>	H	Asn	Trp	Gly-Leu	Arg	2.6 ± 2.2
<b>2</b>	Ac	Asn	Trp	GlyΨ[Tz]Leu	Arg	0.07 ± 0.06
<b>3</b>	Ac	Lys(Palm-γ-Glu)	Trp	GlyΨ[Tz]Leu	Arg	1.6 ± 0.2
<b>4</b>	Ac	Asn	Lys(Palm-γ-Glu)	GlyΨ[Tz]Leu	Arg	216 ± 110
<b>5</b>	Palm-γ-Glu	Asn	Trp	GlyΨ[Tz]Leu	Arg	0.22 ± 0.33
<b>6</b>	Palm-γ-Glu	Asn	Trp	GlyΨ[Tz]Leu	Arg(Me)	0.33 ± 0.24
<b>7</b>	Ac	Asn	Trp	GlyΨ[Tz]Leu	Arg(Me)	0.04 ± 0.02



**Figure 1.** Chemical structures and half maximal effective concentration (mean ± SEM, N = 3) of kisspeptin 10 and analogs C2–C7 as measured in a calcium mobilization assay in KiSS1R-transfected HEK293 cell line. Ac: acetyl; Palm-γ-Glu: N-palmitoylated-γ-glutamate, Tz: Triazole; Me: Methyl.

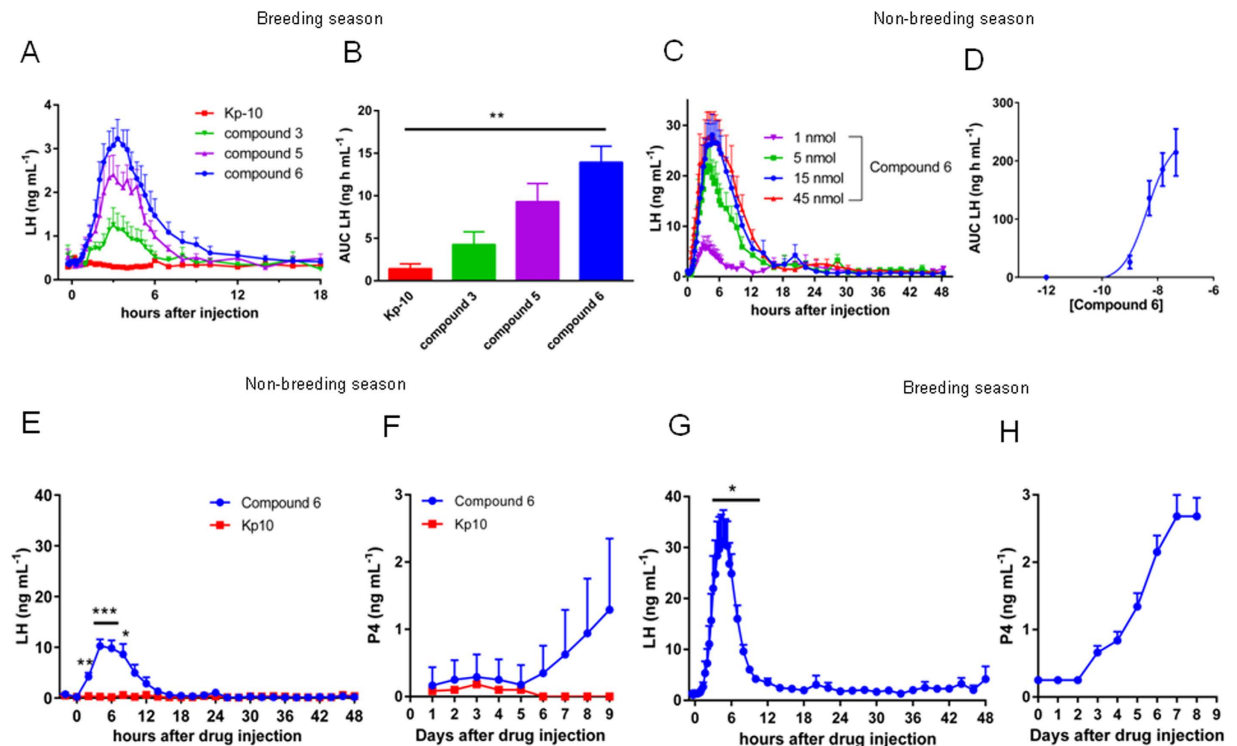
livestock application and cumbersome for human therapy. In human intracerebroventricular administration of drugs is normally not an option, and intravenous infusion or multiple intravenous injections requires hospitalization, medical monitoring and are normally subject to low patient compliance. On the other hand, the use of intracerebroventricular or intravenous perfusion in a farming setting is not even conceivable and multiple intravenous injections would require veterinary skills resulting in an unacceptable cost increase. The design of molecules with improved pharmacological profile, capable of producing the same effect after a single intramuscular injection, would represent a key advance towards clinical and field applications.

At present only two groups have performed a significant medicinal chemistry attempt to develop KiSS1R agonists with improved *in vivo* pharmacological profile compared to Kp. The first group produced a series of decapeptide analogs of Kp10 in which a single amino acid was exchanged with an enantiomer or with another amino acid and the best analog was tested *in vivo* for its capacity to stimulate the gonadotropic axis<sup>8</sup>. The second group performed multiples modifications of the Kp10 template resulting in several degradation resistant analogs. The aim of that research was to curtail GnRH secretion by desensitizing KiSS1R with an extremely long-lived agonist, and consequently reduce to castrate level circulating gonadotropins and testosterone<sup>9,10</sup>. Nevertheless, depending on the dosing regimen, such type of analogs could also be used to stimulate the reproductive system.

Surprisingly, however, this medicinal chemistry effort did not lead to a significant exploitation of these molecules to evaluate their stimulatory effect on reproductive activity. In our previous work<sup>11</sup> we designed a series of Kp10 analogs and evaluated their capacity to stimulate the reproductive axis. When tested *in vivo* these analogs showed an enhanced pharmacological profile compared to Kp10, but the increase of LH and FSH secretion lasted only several hours. To be used in a preclinical proof of concept for reproduction, these molecules needed further refinement. In the present work we report the design and profiling of a new potent and selective Kp analog and its successful application to perform a preclinical proof of concept for ovulation stimulation and puberty advancement.

## Results

**New kisspeptin analogs with improved *in vitro* and *in vivo* activity.** Our previous analogs featured an N-terminal acetyl group and a 1,2,3-triazole heterocycle as a non-hydrolyzable peptide bond mimic to protect it against degradation (compound 2, C2) (Fig. 1). However, C2 only showed a modest enhancement in *in vivo* duration of action, attributed to fast excretion. Accordingly, we incorporated the serum albumin-binding motif N-palmitoylated-γ-glutamate<sup>12,13</sup> inserted in either position 2 or 3 (compounds 3 and 4, C3 and C4). Despite their reduced potency compared to analog C2, the best of the two analogs, C3, had an improved *in vivo* activity. In the present work we focused on two additional modifications in order to obtain a



**Figure 2. In the ewe C6 increases LH plasma concentration and triggers ovulation during breeding and non-breeding seasons.** (A) The effect of Kp10, C3, C5, or C6 (15 nmol/ewe) were compared during the breeding season in ewes under flugestone acetate (FA) treatment, by measuring LH plasma concentration. During an artificial luteal phase induced by the presence of an intravaginal sponge containing FA, intramuscular injection of Kp10, had no effect on LH basal level, whereas the other compounds increased LH plasma concentration from 6 (C3) to more than 10 (C6) hours. (B) Evaluation of the total amount of LH secreted (AUC) show that C6 is the most active (Kruskal- Wallis  $P = 0.0028$ , followed by Dunn's multiple comparisons test). (C-D) During the breeding season injection of C6 produced a clear dose-response with an  $ED_{50}$  of 4.2 nmol as calculated using the AUC of the different doses. Data are the means  $\pm$  SEM,  $N = 6$ . (E,F) Intramuscular administration of 15 nmol/ewe of Kp10 during the non-breeding season, 24 hours after withdrawal of flugestone acetate (FA), had no effect on LH plasma concentration or progesterone level. Conversely, administration of 15 nmol/ewe of C6, induced a highly synchronous LH surge in all ewes during both the non-breeding (E) and breeding season (G). In both non-breeding and breeding season the treatment increases P4 level, over the 1 ng mL<sup>-1</sup> threshold, indicating the formation of *corpora lutea* (F,H). Data are the means  $\pm$  SEM, ( $N = 6$  for Kp10 panels E and F,  $N = 12$  for C6 panels E and F and  $N = 6$  for panels G and H). For panel E and G treatment was compared to basal using ANOVA on repeated measure corrected by Geisser-Greenhouse method to compensate for different variance between groups ( $F = 17.91$ ;  $P < 0.005$ ), followed by Dunn's multiple comparisons test.

molecule suited for a preclinical proof of concept: introduction of the albumin-binding motif on the N-terminal amine of the triazolepeptide in place of the acetyl group of C2, rather than on the amine of the side chain of a lysine (compounds 5 and 6, C5 and C6), and  $\omega$ -methylation of Arg<sup>9</sup> (compounds 6 and 7, C6 and C7). Arg<sup>9</sup>  $\omega$ -methylation has been shown to dramatically enhance proteolytic stability of Kp10 in blood serum by conferring resistance to trypsin-like proteases<sup>14</sup>.

We first checked that the introduction of a  $N^{\omega}$ -methyl group on Arg<sup>9</sup> did not significantly modify *in vitro* activity in intracellular Ca<sup>2+</sup> mobilization assays (Fig. 1, compare C2 and C7). We also found that N-terminal (rather than Lys side chain) introduction of the albumin-binding motif was beneficial, as compound C5 showed a markedly improved  $EC_{50}$  compared to C3 (Fig. 1). Arg<sup>9</sup> methylation (C6) hardly impacted potency (from  $0.22 \pm 0.33$  nM (C5) to  $0.33 \pm 0.24$  nM (C6)) (Fig. 1). Hence, C6 still showed a significant  $\sim 5$ -fold enhancement in  $EC_{50}$  compared to our first generation analog C3. Accordingly, we anticipated that C5 and C6, associating an albumin binding tag to an increased *in vitro* potency and, in the case of C6, an expected enhanced proteolytic resistance, would have significantly improved pharmacodynamics and were selected for further *in vivo* studies.

Equimolar amounts of Kp10, C3, C5 and C6 were injected intramuscularly in ewes during an artificial luteal phase induced by treatment with flugestone acetate (FA) during the breeding season. Under this condition Kp10 (15 nmol/ewe) had only a negligible effect on LH plasma concentration (Fig. 2A,B). Conversely, the three analogs induced a clear and prolonged increase in LH with C6 showing the best profile (Fig. 2A,B). Further testing of C6 during the non-breeding season produced a clear dose response curve with an  $ED_{50}$  of 4.2 nmol (95% CI 1.2–14.0 nmol) (Fig. 2C,D). Based on these results C6 was used for subsequent studies.

**In the ewe C6 induces synchronous LH surges in both breeding and non-breeding season.** Ewes were pretreated with FA for 14 days, to simulate a luteal phase. In the non-breeding season intramuscular injection of Kp10 (15 nmol/ewe) 24 hours after ending of FA treatment, induced no increase of LH plasma concentration (Fig. 2E). Conversely, under the same condition an equimolar amount of the analog produced in all ewes a robust LH increase (peak value  $10.3 \pm 3.7$  ng mL<sup>-1</sup>) reaching a highly synchronous maximum between 4 and 6 hours post-injection (Fig. 2E). Furthermore, 14 hours post-treatment the LH level was still three times higher than the pre-injection concentration ( $0.4 \pm 0.3$  ng mL<sup>-1</sup> and  $1.4 \pm 1.1$  ng mL<sup>-1</sup> basal and treated respectively).

In the ewes injected with Kp10 progesterone level never reached the threshold of 1 ng mL<sup>-1</sup> (Fig. 2F) which is considered the hallmark of ovulation and *corpus luteum* formation. Remarkably, in 8 out of 12 treated ewes treated with C6 progesterone was above the threshold (from 1.1 to 3.1 ng mL<sup>-1</sup>) and remained elevated for several days indicating the formation of viable *corpora lutea* (Fig. 2F). For individual LH and progesterone profiles see Figure S1(A,B) of supplementary material.

During the breeding season C6 injection, 24 hours after FA withdrawal, led to a highly synchronized increase of LH 5 hours post-injection (Fig. 2G). The fold increase compared to basal was similar in breeding and non-breeding season (24 vs 26 fold respectively) but higher in absolute value during the breeding season (LH  $31.3 \pm 6.1$  ng mL<sup>-1</sup> vs  $10.3 \pm 3.7$  ng mL<sup>-1</sup>). LH plasma level remained elevated, three times the basal, up to 10 hours post-injection ( $1.3 \pm 0.1$  ng mL<sup>-1</sup> and  $4.2 \pm 0.5$  ng mL<sup>-1</sup> basal and treated respectively) (Fig. 2G). In all ewes progesterone levels increased and remained elevated up to the end of sampling (Fig. 2H), confirming the formation of *corpora lutea*. For individual LH and progesterone profiles see Figure S1(C,D) of supplementary material. Analysis of FSH showed the induction of a biphasic increase in its plasma concentration reminiscent of that observed during a natural estrous cycle in the ewe (see supplementary Figure S2).

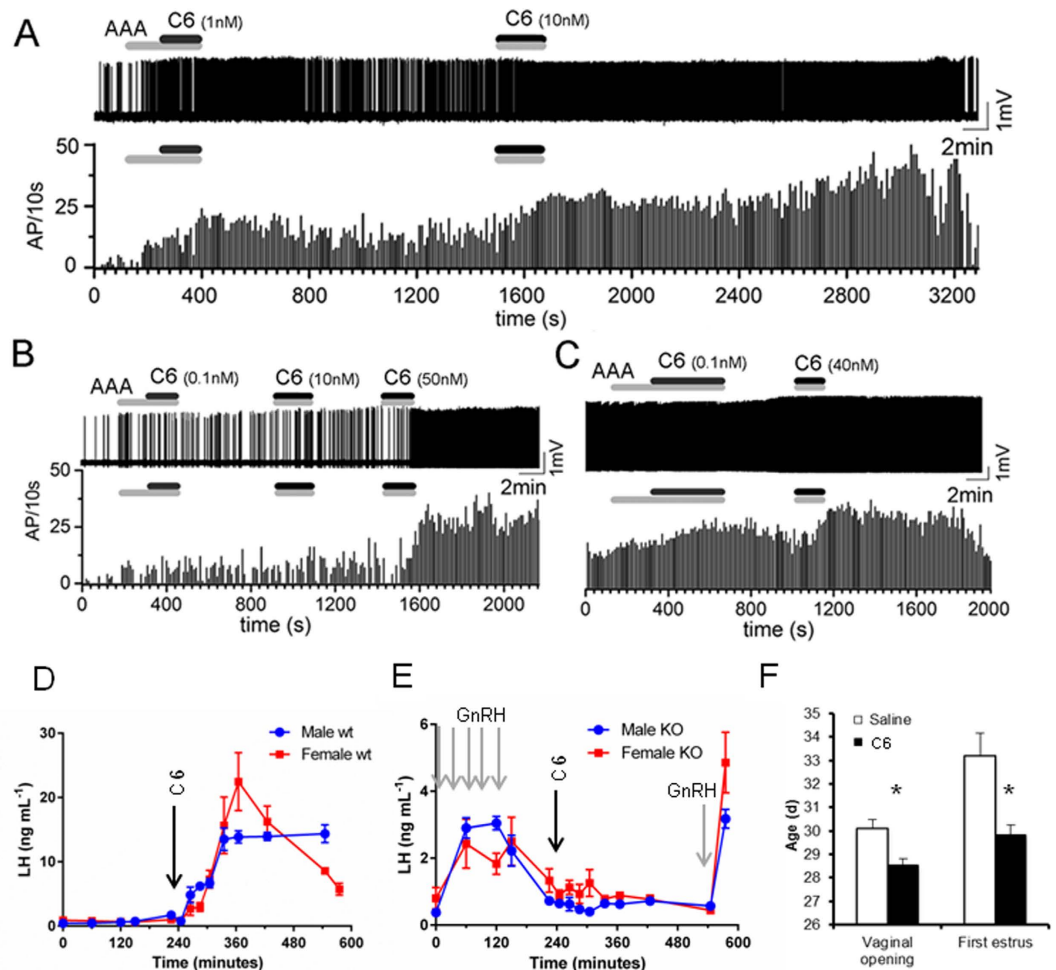
**Ovulations synchronized by C6 are fertile.** To evaluate if ovulations were fertile we used the same protocol during the breeding season, and 6 hours after C6 injection females were individually introduced into a ram's pen. In the presence of the ram 8 out of 10 ewes showed clear estrus behavior (immobilization with head lowered, looking over the shoulder as the ram nudges her flank or anogenital region) followed by mounting. After overnight exposure to the ram equipped with a marking apron, all ewes were marked suggesting successful servicing. In 7 out of 10 ewes progesterone level remained high up to 19 days post-injection, indicating pregnancy. Transrectal ultrasonography confirmed the presence of viable fetuses in the ewes with high progesterone level and healthy lambs were born at term.

**C6 stimulates GnRH neurons in brain slices of GnRH-GFP mice.** To assess if C6 directly acts on GnRH neurons, the drug at concentrations ranging from 0.01 to 40 nM was applied for 2–4 minutes to preoptic area brain slices prepared from adult female GnRH-GFP mice ( $n = 29$  GnRH neurons tested from 4 diestrus and 2 estrus mice). All recordings were undertaken in the presence of a cocktail of ionotropic GABA and glutamate receptor antagonists (kynurenic acid 2 mM, GABAzine 5 mM or bicuculline 10 mM) to remove the possibility of indirect actions of C6 upon GnRH neurons. Cell-attached voltage recordings revealed that C6 exerted a potent dose-dependent excitatory action on the firing rate of individual GnRH neurons (Fig. 3A–C). Approximately 50% of GnRH neurons were activated across the concentration range (0.01 nM, 5/10 cells; 0.1 nM, 2/6 cells; 1 nM, 9/18 cells; 10 nM, 6/14 cells; 40 nM 3/7 cells).

**C6 increases LH plasma concentration in male and female mice.** Intraperitoneal injection of C6 (0.3 nmol/mouse) to wild type male mice resulted in an extremely rapid increase from a basal circulating LH concentration of  $0.8 \pm 0.4$  ng mL<sup>-1</sup> to a plateau of  $13.9 \pm 1.8$  ng mL<sup>-1</sup> at about 90 minutes post-injection. This plateau concentration lasted until experiment end (Fig. 3D). In wild type diestrus females C6 produced a sharp increase of LH from basal concentrations of  $0.7 \pm 0.3$  ng mL<sup>-1</sup> to a peak of  $>20$  ng mL<sup>-1</sup> about 2 hours post-injection followed by a rapid decline to 5–6 ng mL<sup>-1</sup> by experiment end (Fig. 3D).

**C6 has no effect on LH secretion in KiSS1R KO mice.** *In vitro* calcium mobilization assay performed on HEK293 cell line transfected with KiSS1R and on non-transfected parental cell line clearly indicated that in the absence of KiSS1R C6 has no effect (see supplementary Figure S3). To establish if the increase in LH triggered by C6 is mediated by KiSS1R we performed a set of experiments in KiSS1R KO mice. Basal LH levels in KiSS1R KO mice were  $0.4 \pm 0.1$  ng mL<sup>-1</sup> and  $0.8 \pm 0.4$  ng mL<sup>-1</sup> in males and diestrus females respectively. Priming with GnRH resulted in a 3–6 fold increase of circulating LH concentration at 15 minutes post injection ( $2.7 \pm 0.6$  ng mL<sup>-1</sup> and  $2.3 \pm 0.8$  ng mL<sup>-1</sup> in males and females respectively) that declined to basal level 2 hours after the last GnRH injection (Fig. 3E). Administration of 0.3 nmol of C6 had no effect on LH concentration up to 5 hours post-injection. Circulating LH concentrations over this time averaged  $0.6 \pm 0.1$  ng mL<sup>-1</sup> and  $0.9 \pm 0.5$  ng mL<sup>-1</sup> in male and female mice respectively (Fig. 3E). A further injection of GnRH at the end of experiment produced again a rise in LH concentration ( $3.2 \pm 0.4$  ng mL<sup>-1</sup>  $4.8 \pm 1.9$  ng mL<sup>-1</sup> in males and females respectively) confirming the functionality of the pituitary gland.

**C6 advances the age of puberty in mice.** Daily injection of C6 (0.15 nmol/mouse) from postnatal day 26 to 30 advanced vaginal opening in treated animals compared to controls ( $28.5 \pm 0.2$  vs  $30.1 \pm 0.4$  days respectively) (Mann Whitney test  $P = 0.0014$ ) (Fig. 3F). All animals injected with C6 showed vaginal opening by day 29 versus day 32 for control animals (supplementary Figure S4A). Consistent with this, first estrus was detected much earlier in treated animals compared to controls ( $29.8 \pm 0.4$  vs  $33.2 \pm 1.0$  days respectively, Mann Whitney test  $P = 0.0036$ ) (Fig. 3F and supplementary Figure S4B). On day 26 in most control animals LH level were below the detection limit of the assay and slightly increased by day 30. The first and last C6 injections increased LH level, but on day 30 the increase was significantly lower than on day 26 (see supplementary Figure S5).



**Figure 3. In mice C6 excites GnRH neurons, induces LH secretion by a KiSS1R-dependent mechanism and its repeated administration advances puberty.** (A–C) Cell-attached voltage recordings of three GnRH neurons from adult female GnRH-GFP mice (with frequency histograms below each voltage recording) showing the dose-dependent activation of GnRH neuron firing by 0.1–40 nM C6. A cocktail of amino acid receptor antagonists (AAA, including kynurenic acid 2 mM, GABA<sub>A</sub> 5 mM or bicuculline 10 mM) was applied before or with C6 as indicated by the grey bars. (D) Administration of C6 (arrow) to male or female mice *in vivo* induces a rapid and prolonged increase of LH plasma concentration in males and a transient LH surge-like in females. (E) In KiSS1R KO mice, GnRH priming (grey arrows) induces an increase in plasma LH concentrations over basal in both males and females. However, administration of C6 has no effect. Further stimulation with GnRH (grey arrow) after C6 application still induces an increase of LH confirming that the pituitary is still responsive. Data are the mean  $\pm$  SEM, N = 4 for males and N = 7 for females. (F) Daily injection of C6 (0.15 nmol/mouse) from postnatal day 26 to 30 significantly advanced vaginal opening (Mann Whitney test P = 0.0014) and first estrus (Mann Whitney test P = 0.0036). Data are the means  $\pm$  SEM, N = 10.

## Discussion

The present work discloses the synthesis of a Kp10 analog (C6) capable, following progesterone priming, of inducing fertile ovulation in ewes after a single intramuscular injection. C6 also advanced puberty in female mice. These results imply that Kp analogs hold potential for both the management of livestock reproduction and the treatment of reproductive disorders.

We have recently described a triazole-containing lipopeptide with an improved pharmacodynamics profile compared to Kp10<sup>11</sup> (C3). Nevertheless, further improvement of its profile was required to perform a preclinical proof of concept. Here, two new compounds (C5 and C6) are described, combining an N-terminal albumin-binding motif, a Gly<sup>6</sup>Ψ[Tz]Leu<sup>7</sup> non-hydrolyzable peptide bond mimics, and an N<sup>ω</sup>-methylation on Arg<sup>9</sup> in the case of C6. Introduction of the albumin-binding motif on the N-terminus of the peptide rather than on the side chain of a lysine largely improved EC<sub>50</sub>, while simplifying the synthetic processes: indeed, solid-phase peptide synthesis of a branched structure typically requires an orthogonal protection scheme and non-standard synthetic steps. Note that, to our knowledge, the present work constitutes the first example of introduction of an N-palmitoylated glutamate N-terminally rather than as a lysine substituent, that could be of general interest for other peptide-based drugs.

To check if the improved *in vitro* potencies of **C5** and **C6** were mirrored by improved *in vivo* activities, their activities were compared to that of Kp10 and the previously published **C3**. Remarkably, both compounds were extremely active at increasing LH plasma concentration under conditions where a single injection of Kp10 had no effect. Reflecting the increased resistance to proteolysis expected from Arg<sup>9</sup> methylation, **C6** induced a significantly longer and higher increase of LH compared to **C5**. In addition, compared to **C3**, the effect of **C6** was more than twice larger in amplitude and nearly twice longer in duration confirming a substantial pharmacodynamics improvement. Notably, this effect was obtained after intramuscular injection overcoming the need for intravenous or intracerebral delivery; this represents an important advance towards potential applications.

A previous study reported the synthesis of a Kp10 analog in which the N-terminal amino acid [Y] was exchanged with its enantiomer [dY]. This modification probably reduced the N-terminal degradation by exopeptidases. When injected intraperitoneally in mice this analog was superior to Kp10. Nevertheless, its effect on LH was already declining 60 minutes post-injection and disappeared after 120 minutes<sup>8</sup>.

However, the best Kp analogs described in the literature are two nonapeptides: TAK-683 and TAK-448. Both compounds were active after a single subcutaneous injection and capable of inducing a rapid and long lasting increase of LH in healthy men. However, no clear dose-response relationship was obtained with either compound<sup>10,15</sup>. This is a serious drawback when tailoring the dose to the effect. In this respect the clear dose-dependent action of **C6** represents a significant advantage. We have previously reported that the azaGly<sup>6</sup> modification used in the TAK compounds is less efficient in preventing degradation of the Phe<sup>5</sup>Gly<sup>6</sup>Leu<sup>7</sup> sequence than the Gly<sup>6</sup>Ψ[Tz]Leu<sup>7</sup> used in our analog<sup>11</sup>. Nevertheless, it seems unlikely that this could account for the difference in the dose-dependency observed between **C6** and TAK-683/TAK-448. Considering that no modification to reduce renal clearance was incorporated in TAK-683 and TAK-448, it is plausible that the combination of the Gly<sup>6</sup>Ψ[Tz]Leu<sup>7</sup> and the albumin binding motif accounts for the improved profile.

In seasonal breeding livestock (e.g. sheep and goats) induction of ovulation in the non-breeding season is required to guarantee product availability throughout the year and maintain economic viability<sup>16</sup>. In humans, ovulation induction is a therapeutic goal, in this case to treat forms of HH such as hypothalamic amenorrhea. In addition, the possibility to trigger appropriately timed puberty is desirable to improve livestock utilization and is a medical requirement in patients affected by delayed puberty. To assess if **C6** may be useful to address these unmet needs we tested its effects in two model species. To perform a proof of concept for ovulation induction/synchronization, the ewe has the advantage of being a species subjected to intensive commercial reproduction management. In addition, during the non-breeding season the hypothalamo-pituitary-gonadal (HPG) axis of the ewe shows a reduced activity resembling that observed in HH. Results obtained during this period may give hints on the possibility to treat various types of reproductive disorders.

In the non-breeding season, following progestogen priming, a single intramuscular administration of **C6** was able to induce LH and FSH surges followed by *corpora lutea* formation, a hallmark of ovulation. During the breeding season **C6** triggered perfectly synchronized ovulations that were fertile as shown by delivery of healthy lambs. Noteworthy, TAK-683 was recently tested for its capacity to stimulate an LH surge in goats. Depending on the phase of the estrus cycle, acute administration resulted either in a stimulatory effect capable of triggering an LH surge<sup>17</sup>, or in a perturbation of follicular maturation, reduction of ovulating follicle size and reduced progesterone level during the ensuing luteal phase<sup>18</sup>. At this time it is unclear if TAK-683 would be suitable for induction and/or synchronization of ovulations. In addition there is no information about the fertility of ovulations resulting from this treatment. Another kisspeptin analog (FTM080) was recently tested by intravenous injection in anestrus ewe. FTM080 increased LH plasma concentration, however, it was less potent than Kp10 and its duration of action was even shorter<sup>19</sup>. Therefore, our results are the first to prove that it is possible with a single intramuscular injection of a Kp analog to synchronize ovulations that are fertile. For livestock management this has potentially immediate application. At present ovulation during the non-breeding season is obtained by a combination of progestogen priming and treatment with equine chorionic gonadotropin (eCG alias PMSG). However, the use of eCG comes with drawbacks: potential sanitary risk due to disease transmission (because eCG is extracted from blood serum), and immunological responses that affect the efficacy of ensuing treatments<sup>20</sup>. The replacement of eCG by Kp analogs is therefore foreseeable and it would be a major improvement in livestock management. In addition the highly synchronized ovulation induced by the analog may represent an advantage to improve the timing of artificial insemination.

Experiments in mice demonstrated that **C6** is also highly active in this species, and therefore likely to be usable in other mammals. The pattern of LH secretion triggered by **C6** in mice was different between sexes. In male the injection induced a rapid increase followed by a long-lasting plateau (more than 6 hours). Conversely, in female the pattern of LH plasma concentration was reminiscent of an LH surge. A possible explanation for this difference is an increase of estradiol negative feedback in females capable of reducing GnRH secretion, similar to what happens during the estrus cycle. Further studies would be necessary to explore this hypothesis and decipher the underpinning mechanisms. In juvenile mice KiSS1R is expressed in about 90% of GnRH neurons<sup>21</sup>. In prepubertal female rats icv injections of murine Kp10 every 12 hours for 5 days advanced puberty<sup>7</sup> and in 25-day old rats human Kp54 injection after eCG priming induced ovulation<sup>22</sup>. In primates hourly pulses of Kp10 to juvenile male induced the pulsatile release of LH and FSH<sup>6</sup>. Data on Kp involvement in puberty onset in domestic animals is limited, but consistent with the hypothesis that an increase in Kp production and release are important elements<sup>23–25</sup>. All together these data corroborate the notion that kisspeptin system has a key role in puberty onset in mammals. In farm animals, establishment of puberty is the starting point of female's lifetime productivity and methods have been developed to try to hasten it. In this respect, the demonstration that daily injections of **C6** advance puberty in mice is an important result that could translate into livestock management. Finally, delayed puberty is a rather common pediatric disorder<sup>26</sup> and kisspeptin analogs might represent an interesting new therapeutic strategy.

Available data on repeated Kp administration are contrasted suggesting or not the induction of tachyphylaxis (see for example 4 and 6). We have shown that in prepubertal mice **C6** is still active after multiple injections, even though its efficacy is seriously affected. A decrease in response after multiple injections has a limited relevance when trying to induce ovulation in fertile females, because, as we showed, a single injection will suffice. Conversely, it is more relevant for treating pathologies requiring prolonged treatment. Desensitization of the receptor and/or GnRH/LH stock depletion are two non-exclusive hypotheses that could explain this phenomenon. Desensitization in response to an agonist is a phenomenon mainly depending on the dosing regimen. Further studies exploring different dosing would help to fine tune the treatment that better allows for continuous stimulation without desensitization. On the other hand, dosing regimen inducing a rapid desensitization could also find a therapeutic interest for treating hormone dependent cancer.

Recent data suggest that Kp could activate RFamide related peptide-3 (RFRP-3) receptors<sup>27–30</sup>, albeit with lower potency than KiSS1R. Inconsistent effects of RFRP-3 on LH secretion in different species (inhibitory, stimulatory or no effect) make it difficult to predict the possible impact of the activation of RFRP-3 receptors by Kp. However, the lack of effect on calcium mobilization by **C6** on cell line non-transfected with KiSS1R and on LH levels in KiSS1R KO mice indicates that KiSS1R is essential for **C6** stimulatory activity. KiSS1R is expressed in GnRH neurons<sup>31</sup> and our electrophysiological data demonstrate that **C6** directly activates GnRH neurons in brain slices. Peptide-based compounds normally do not easily cross the blood brain barrier (BBB), questioning the possibility that peripheral injection of **C6** would directly stimulate the GnRH cell body. However, the introduction of a long-chain fatty acid increases lipophilicity, and  $\omega$ -methylation of arginyl residue, by reducing hydrogen bonding, is also known to increase membrane permeability<sup>32</sup>. Thus, **C6**, which contains both these modifications, might be prone to cross the BBB. On the other hand, GnRH projections to the median eminence possess a unique mixture of dendritic and axonal properties<sup>33</sup> and can respond to Kp to regulate GnRH secretion in a spike-independent manner<sup>34</sup>. Furthermore, it has been reported that GnRH terminals could release a significant amount of hormone, even in the absence of the neuronal cell body<sup>34–38</sup>. Hence, it is plausible that even though **C6** would not cross the BBB, its action on terminals may suffice to trigger GnRH release. Further studies will be necessary to test this hypothesis.

The preclinical results presented herein support the notion that in mammals it is possible to trigger and synchronize ovulation as well as to accelerate puberty using a kisspeptin analog. Hence, kisspeptin analogs hold the potential to address unmet needs in livestock management and might find applications also in human therapy.

## Materials and Methods

**Experimental animals.** *Ewes.* Ile de France ewes (3 to 5 years old, weighing 65–90 kg) from INRA breeding facilities were maintained at the INRA research center (Nouzilly, France) under natural photoperiod. Experiments were carried out in accordance with existing national and international regulations (directive 2010/63/UE, Authorizations N° A 38801 and E37-175-2 of the French Ministry of Agriculture) and all procedures were approved by the local Animal Ethics Committee (authorization number 2012-03-7). Experiments were performed at the Unité Expérimentale PAO n°1297 (EU0028) of INRA, Centre Val de Loire.

*Mice.* All mice were obtained from the University of Otago animal breeding facility and were bred on a C57BL/6J background, except for KiSS1R KO mice that were bred on a mixed 129S6/Sv/Ev background. They were group housed and maintained on a 12h:12h light:dark cycle at a constant temperature ( $21 \pm 1$  °C), with *ad libitum* access to a standard rodent diet containing 4.8% fat and 0% sucrose by weight (Specialty Feeds, Glenn Forrest, Western Australia) and water. The University of Otago Animal Ethics Committee approved all animal protocols. The estrous cycle stage of female mice was determined by daily vaginal smear, with mice being killed for electrophysiology experiments between 10 and 11 am.

All *in vivo* experiments were performed once.

**Peptide synthesis.** Peptides **C1–C7** were assembled by standard automated Fmoc/*t*Bu solid phase peptide synthesis, except for the introduction of the triazole in **C2–C7**, the heterocycle being generated through solid-supported copper-catalyzed azide/alkyne cycloaddition as described earlier<sup>11</sup>. All the compounds were purified by reverse phase HPLC. See supplementary information for detailed procedures and full characterizations.

**Cell culture and screening assay.** Receptor activation was monitored using Fluo4 NW Ca<sup>2+</sup> assay kit in HEK293A cells transfected with the hKiSS1R as previously described<sup>11</sup> (kind gift of professor N. de Roux, INSERM U690, Hôpital Robert Debré, Paris, France). Considering the type of analysis performed, assessment of second messenger activation of a heterologous expressed receptor, the use of potentially misidentified cells has no impact on the result. Basal fluorescence was measured with a plate reader (PolarStar Optima, BMG Labtech). Immediately after the basal reading, the test compound was added at different concentrations and the intracellular Ca<sup>2+</sup> dynamic monitored. To generate concentration activity curves, the mean basal value was subtracted from the value obtained after stimulation. The area under the curve (AUC) was calculated and plotted against concentrations. Concentration activity data points were fitted to sigmoidal curves generated by GraphPad Prism 5 and EC<sub>50</sub> automatically calculated.

**Testing of drugs in the ewe.** To induce an artificial luteal phase intact cyclic (October–December) or anestrus acyclic (March–June) ewes were implanted with vaginal sponge containing FA (Chronogest, Intervet), a progesterone analog, for 14 days. To compare the activity of Kp, **C3**, **C5** and **C6** injection of test drug was performed during the treatment with FA. For the experiments of synchronization and induction of ovulation 24 hours before drug injection the vaginal sponge was removed and the same day a catheter (ID 1.0, L 52 mm, Intraflon 2, Vygon, France) was inserted in the jugular vein. On the day of experiment the test compound was



injected intramuscularly and blood samples (2 mL) were taken at various time intervals post-injection: every 10 minutes for the first hour, every 20 minutes from 2 to 6 hours, every 60 minutes from 6 to 10 hours and every 120 minutes from 10 hours to the end of the experiment). Data are expressed as means  $\pm$  SEM (N = 6–12 per group, for details on group size see figure legends).

**Assessment of estrus behavior and ovulation fertility.** Intact cyclic ewes (N = 10) treated as described above were individually presented to a sexually active ram six hours after C6 injection. The presence or absence of typical estrus behaviors (i.e. immobilization with head lowered, looking over the shoulder as the ram nudges her flank or anogenital region) and mounting were recorded over a five minutes period. Afterwards, ewes (2–3 per group) were left overnight with a ram harnessed with a marking device to assess servicing. As an early marker of pregnancy a blood sample was collected 19 days post-injection and progesterone level measured by ELISA assay.

**Brain slice preparation and electrophysiology.** Brain slice electrophysiology was undertaken as reported previously<sup>39</sup>. In brief, 250  $\mu$ m-thick coronal brain slices were prepared from adult female C57BL/6 GnRH-GFP mice<sup>40</sup> and cell-attached recordings (current clamp with zero holding current) of GnRH neurons were undertaken using a fixed-stage upright microscope under Nomarski differential interference contrast optics. Patch pipettes (3–5 M $\Omega$ ) were filled with a pipette solution composed of (in mM) 145 NaCl, 3 KCl, 2.5 CaCl<sub>2</sub>, 10 HEPES, 1.2 MgCl<sub>2</sub> (pH 7.35 adjusted by NaOH, ~290 mOsmol). Cells were exposed to 0.01, 0.1, 1, 10 and 40 nM concentrations of C6 (stock solution of 0.5 mM prepared in DMSO giving final bath concentration of ~0.04% DMSO) through the bathing medium for 2–3 minutes periods. Signals were amplified with a Multiclamp 700B amplifier (CV7B; Molecular Devices, Foster City, CA) and sampled on-line (Digidata 1440 A interface; Molecular Devices) before being filtered (10 kHz for current clamp; Bessel filter of Multiclamp 700B) and digitized at a rate of 10 kHz for pClampex recording. Acquisition and subsequent analysis were performed with the Clampex 10 suite of software (Molecular Devices) and Origin Pro 7.5 (OriginLab Corporation, Northampton, MA, USA). Drug-induced changes in action potential (AP) frequency were determined as follows: Responses to C6 were determined by sorting all APs into 10 s bins and generating histograms of AP frequency. The control period was considered to be the 3 minutes period immediately before drug administration. The response period was of variable duration (2–20 minutes) lasting from drug administration until the cell returned to baseline firing. If the increase in the average frequency of AP firing during the response period was >25% of the control period, the cell was considered to have responded to the drug.

### Pharmacodynamics of C6 effect on circulating LH concentration in wild type and KiSS1R null mice

Adult male and female KiSS1R KO mice<sup>41</sup> were primed by 5 ip injections of 40 ng/100  $\mu$ L GnRH at 30 minute intervals and an equivalent volume of saline was injected to wild type mice. This protocol allows the pituitary gland to become more responsive to GnRH in this mouse line as previously reported<sup>41</sup>. Blood samples (4  $\mu$ L) were collected from the tail tip as previously described<sup>42</sup>, before the first, third and fifth injection, and 30, 105 and 125 minutes after the last injection. C6 was injected immediately after the last blood sampling (0.3 nmoles/200  $\mu$ L, a dose established in a preliminary experiment) and blood samples taken 20, 40, 60, 90, 120, 180, 300 minutes following injection. After 300 minutes a further injection of GnRH (40 ng/100  $\mu$ L) was performed in KiSS1R KO mice, and a final blood sample was taken 30 minutes later to confirm the functionality of the HPG axis. Whole blood samples were collected in 150  $\mu$ L of 0.1 M PBS-0.05% Tween20, mixed and moved to dry ice at the end of each sampling round. Experiments were conducted during the first 8 hours of the light phase to avoid any endogenous LH surges associated with the preovulatory stage of the female reproductive cycle. Data are expressed as means  $\pm$  SEM (N = 4–7 per group, for details on group size see figure legends).

### Effect of C6 on pubertal timing in female mice

Twenty female mice, born synchronously by timed mating, were randomly assigned to daily treatment with either C6 (0.15 nmol/100  $\mu$ L) or saline only from postnatal day 26 to 30. They were monitored daily for indicators of pubertal onset, namely vaginal opening and then estrous cyclicity onset (first estrus, detected by vaginal lavage and cytology) until puberty had occurred in all animals. Puberty occurs around 4.5 weeks of age in female C57BL/6 J mice in our animal facility. Blood samples to measure LH level were taken on the first and the last day of treatment.

### Hormone assays

A sandwich ELISA, adapted from Steyn *et al.*<sup>42</sup>, was used to measure LH concentration in mice. Monoclonal bovine LH $\beta$  518 B7 (1:1,000 dilution) was used as the capture antibody (obtained from Lillian Sibley at University of California Davis), and the standard was NIDDK mouse LH reference preparation from AF Parlow (AFP5306A mouse RIA kit). The assay sensitivity was 0.2 ng/mL and the mean intra-assay coefficient of variation averaged 11%.

Plasma LH concentrations in ewe were measured using previously described radioimmunoassays<sup>43,44</sup>. The assay standard was 1055-CY-LH (equivalent to 2.2 NIH-LH-S1). Intra-assay coefficient of variation averaged 9% and assay sensitivity was 0.2  $\pm$  0.05 ng/mL. Plasma FSH levels were measured using the reagents supplied by Tucker Endocrine Research Institute (Atlanta, Georgia, USA). Intra-assay and inter-assay coefficient of variation averaged 7.6% and 9% respectively; assay sensitivity was 0.1 ng/mL relative to the standard (Tuener of FSH-std.1 equivalent to 1.0 NIH-FSH-S1). The cross reactivity with ovine LH was 0.03%.

Progesterone was measured by an ELISA assay on 96-well plate (Immuno Nunc Maxisorp C96) coated with goat anti-mouse IgG (Uptima UP462140, Interchim) overnight at 4  $^{\circ}$ C. After washing with Tris-Tween20 the plates were incubated with the secondary antibody (mouse monoclonal anti-progesterone, AbD, Serotec (10  $\mu$ L in 16 mL Tris-BSA) together with 10  $\mu$ L of samples overnight at 4  $^{\circ}$ C. The following day 50  $\mu$ L/well of

progesterone-alpha alkaline phosphatase conjugate (Immunometrics Ltd.)(10  $\mu$ L P4-pal 6 mL Tris-BSA) was added to each well and incubated in the dark for 1 hour. Plates were washed with Tris-Tween20 and then were incubated with pNpp (Sigma-Aldrich) for about 2 hours at 37 °C and absorbance were recorded at 405 nm with a plate reader (TECAN). Intra-assay coefficient of variation averaged 8.5% and assay sensitivity was 0.25 ng/mL.

## References

- Pinilla, L., Aguilar, E., Dieguez, C., Millar, R. P. & Tena-Sempere, M. Kisspeptins and reproduction: physiological roles and regulatory mechanisms. *Physiol. Rev.* **92**(3), 1235–1316 (2012).
- Sebert, M. E. *et al.* Insights into the mechanism by which kisspeptin stimulates a preovulatory LH surge and ovulation in seasonally acyclic ewes: potential role of estradiol. *Domest. Anim. Endocrinol.* **38**(4), 289–298 (2010).
- Young, J. *et al.* Kisspeptin restores pulsatile LH secretion in patients with neurokinin B signaling deficiencies: physiological, pathophysiological and therapeutic implications. *Neuroendocrinology* **97**(2), 193–202 (2013).
- Jayasena, C. N. *et al.* Subcutaneous injection of kisspeptin-54 acutely stimulates gonadotropin secretion in women with hypothalamic amenorrhea, but chronic administration causes tachyphylaxis. *J. Clin. Endocrinol. Metab.* **94**(11), 4315–4323 (2009).
- Jayasena, C. N. *et al.* Twice-weekly administration of kisspeptin-54 for 8 weeks stimulates release of reproductive hormones in women with hypothalamic amenorrhea. *Clin. Pharmacol. Ther.* **88**(6), 840–847 (2010).
- Plant, T. M., Ramaswamy, S. & Dipietro, M. J. Repetitive activation of hypothalamic G protein-coupled receptor 54 with intravenous pulses of kisspeptin in the juvenile monkey (*Macaca mulatta*) elicits a sustained train of gonadotropin-releasing hormone discharges. *Endocrinology* **147**(2), 1007–1013 (2006).
- Navarro, V. M. *et al.* Advanced vaginal opening and precocious activation of the reproductive axis by KiSS-1 peptide, the endogenous ligand of GPR54. *J. Physiol.* **561** (Pt 2), 379–386 (2004).
- Curtis, A. E. *et al.* A kisspeptin-10 analog with greater *in vivo* bioactivity than kisspeptin-10. *Am. J. Physiol. Endocrinol. Metab.* **298**(2), E296–E303 (2010).
- Matsui, H. *et al.* Chronic administration of the metastin/kisspeptin analog KISS1-305 or the investigational agent TAK-448 suppresses hypothalamic pituitary gonadal function and depletes plasma testosterone in adult male rats. *Endocrinology* **153**(11), 5297–5308 (2012).
- Scott, G. *et al.* Double-blind, randomized, placebo-controlled study of safety, tolerability, pharmacokinetics and pharmacodynamics of TAK-683, an investigational metastin analogue in healthy men. *Br. J. Clin. Pharmacol.* **75**(2), 381–391 (2013).
- Beltramo, M. *et al.* Rational design of triazololipopeptides analogs of kisspeptin inducing a long-lasting increase of gonadotropins. *J. Med. Chem.* **58**(8), 3459–3470 (2015).
- Knudsen, L. B. *et al.* Potent derivatives of glucagon-like peptide-1 with pharmacokinetic properties suitable for once daily administration. *J. Med. Chem.* **43**(9), 1664–1669 (2000).
- Bellmann-Sickert, K. *et al.* Long-acting lipidated analogue of human pancreatic polypeptide is slowly released into circulation. *J. Med. Chem.* **54**(8), 2658–2667 (2011).
- Asami, T. *et al.* Trypsin resistance of a decapeptide KISS1R agonist containing an N<sup>ω</sup>-methylarginine substitution. *Bioorg. Med. Chem. Lett.* **22**(20), 6328–6332 (2012).
- MacLean, D. B., Matsui, H., Suri, A., Neuwirth, R. & Colombel, M. Sustained exposure to the investigational Kisspeptin analog, TAK-448, down-regulates testosterone into the castration range in healthy males and in patients with prostate cancer: results from two phase 1 studies. *J. Clin. Endocrinol. Metab.* **99**(8), E1445–E1453 (2014).
- Chemineau, P. *et al.* Seasonality of reproduction in mammals: intimate regulatory mechanisms and practical implications. *Reprod. Domest. Anim.* **43** Suppl 2, 40–47 (2008).
- Endo, N. *et al.* Differential changes in luteinizing hormone secretion after administration of the investigational metastin/kisspeptin analog TAK-683 in goats. *Anim. Reprod. Sci.* **159**, 87–93 (2015).
- Goto, Y. *et al.* Ovarian and hormonal responses to follicular phase administration of investigational metastin/kisspeptin analog, TAK-683, in goats. *Reprod. Domest. Anim.* **49**(2), 338–342 (2014).
- Whitlock, B. K. *et al.* Kisspeptin receptor agonist (FTM080) increased plasma concentrations of luteinizing hormone in anestrus ewes. *PeerJ.* **3**, e1382 (2015).
- Roy, F. *et al.* Humoral immune response to equine chorionic gonadotropin in ewes: association with major histocompatibility complex and interference with subsequent fertility. *Biol. Reprod.* **61**(1), 209–218 (1999).
- Han, S. K. *et al.* Activation of gonadotropin-releasing hormone neurons by kisspeptin as a neuroendocrine switch for the onset of puberty. *J. Neurosci.* **25**(49), 11349–11356 (2005).
- Matsui, H., Takatsu, Y., Kumano, S., Matsumoto, H. & Ohtaki, T. Peripheral administration of metastin induces marked gonadotropin release and ovulation in the rat. *Biochem. Biophys. Res. Commun.* **320**(2), 383–388 (2004).
- Redmond, J. S. *et al.* Developmental changes in hypothalamic Kiss1 expression during activation of the pulsatile release of luteinising hormone in maturing ewe lambs. *J. Neuroendocrinol.* **23**(9), 815–822 (2011).
- Redmond, J. S. *et al.* Kisspeptin activates the hypothalamic-adenohypophyseal-gonadal axis in prepubertal ewe lambs. *Reproduction* **141**(4), 541–548 (2011).
- Lents, C. A., Heidorn, N. L., Barb, C. R. & Ford, J. J. Central and peripheral administration of kisspeptin activates gonadotropin but not somatotropin secretion in prepubertal gilts. *Reproduction* **135**(6), 879–887 (2008).
- Wei, C. & Crowne, E. C. Recent advances in the understanding and management of delayed puberty. *Arch. Dis. Child.* doi: 10.1136/archdischild-2014-307963 (2015).
- Elhabazi, K. *et al.* Endogenous mammalian RF-amide peptides, including PrRP, kisspeptin and 26RFa, modulate nociception and morphine analgesia via NPFF receptors. *Neuropharmacology* **75C**, 164–171 (2013).
- Liu, X. & Herbison, A. Kisspeptin regulation of arcuate neuron excitability in kisspeptin receptor knockout mice. *Endocrinology* **156**(5), 1815–1827 (2015).
- Oishi, S. *et al.* Activation of neuropeptide FF receptor by kisspeptin receptor ligand. *ACS Med. Chem. Lett.* **2**, 53–57 (2011).
- Lyubimov, Y. *et al.* Human kisspeptins activate neuropeptide FF2 receptor. *Neuroscience* **170**(1), 117–122 (2010).
- Irwig, M. S. *et al.* Kisspeptin activation of gonadotropin releasing hormone neurons and regulation of KiSS-1 mRNA in the male rat. *Neuroendocrinology* **80**(4), 264–272 (2004).
- Salameh, T. S. & Banks, W. A. Delivery of therapeutic peptides and proteins to the CNS. *Adv. Pharmacol.* **71**, 277–299 (2014).
- Iremonger, K. J. & Herbison, A. E. Multitasking in Gonadotropin-Releasing Hormone Neuron Dendrites. *Neuroendocrinology* **102**(1–2), 1–7 (2015).
- Herde, M. K., Iremonger, K. J., Constantin, S. & Herbison, A. E. GnRH neurons elaborate a long-range projection with shared axonal and dendritic functions. *J. Neurosci.* **33**(31), 12689–12697 (2013).
- d'Anglemont de Tassigny, X., Fagg, L. A., Carlton, M. B. & Colledge, W. H. Kisspeptin can stimulate gonadotropin-releasing hormone (GnRH) release by a direct action at GnRH nerve terminals. *Endocrinology* **149**(8), 3926–3932 (2008).
- Purnelle, G., Gerard, A., Czajkowski, V. & Bourguignon, J. P. Pulsatile secretion of gonadotropin-releasing hormone by rat hypothalamic explants without cell bodies of GnRH neurons. *Neuroendocrinology* **66**(5), 305–312 (1997).
- Gaskins, G. T., Glanowska, K. M. & Moenter, S. M. Activation of neurokinin 3 receptors stimulates GnRH release in a location-dependent but kisspeptin-independent manner in adult mice. *Endocrinology* **154**(11), 3984–3989 (2013).

38. Uenoyama, Y. *et al.* Ultrastructural evidence of kisspeptin-gonadotrophin-releasing hormone (GnRH) interaction in the median eminence of female rats: implication of axo-axonal regulation of GnRH release. *J. Neuroendocrinol.* **23**(10), 863–870 (2011).
39. Liu, X. & Herbison, A. E. RF9 excitation of GnRH neurons is dependent upon Kiss1r in the adult male and female mouse. *Endocrinology* **155**(12), 4915–4924 (2014).
40. Spengel, D. J., Krüth, U., Hanley, D. F., Sprengel, R. & Seeburg, P. H. GABA- and glutamate-activated channels in green fluorescent protein-tagged gonadotropin-releasing hormone neurons in transgenic mice. *J. Neurosci.* **19**(6), 2037–2050 (1999).
41. Seminara, S. B. *et al.* The GPR54 gene as a regulator of puberty. *N. Engl. J. Med.* **349**(17), 1614–1627 (2003).
42. Steyn, F. J. *et al.* Development of a methodology for and assessment of pulsatile luteinizing hormone secretion in juvenile and adult male mice. *Endocrinology* **154**(12), 4939–4945 (2013).
43. Montgomery, G. W., Martin, G. B. & Pelletier, J. Changes in pulsatile LH secretion after ovariectomy in Ile-de-France ewes in two seasons. *J. Reprod. Fertil.* **73**(1), 173–183 (1985).
44. Pelletier, J., Kann, G., Dolais, J. & Rosselin, G. Radio-immunologic determination of plasma luteinizing hormone in sheep. Comparison with the biologic determination of LH by the diminution of ovarian ascorbic acid, and example of the application to measure of the blood LH in ewes. *C. R. Seances Acad. Sci. D* **266**(25), 2352–2354 (1968).

## Acknowledgements

The Région Centre Val de Loire council (grant Reprokiss and Capriss) and the French Agence National de la Recherche (grant ANR-15-CE20-0015-01) are acknowledged for financial support. The New Zealand Health Research Council provided financial support for experiments undertaken in New Zealand. We thank the CBM and FR2708 mass spectrometry platforms, and in particular Dr Guillaume Gabant and Dr Cyril Colas for recording MS spectra. We are grateful to Dr. N. de Roux (INSERM U690, Hôpital Robert Debré, Paris, France) for the kind gift of the HEK293 cell line stably transfected with hKiSS1R. We warmly thank CIRE personnel for assistance with jugular cannulation, the personnel of the Unité Expérimentale PAO n°1297 (EU0028) of INRA, Centre Val de Loire for help with animal husbandry and Stephanie Martinet for technical support.

## Author Contributions

C.D. performed and designed research *in vivo* and wrote the paper; V.R. performed research *in vivo* and *in vitro*; K.A. performed research *in vivo*; M.G. synthesized molecule; J.-B.M. synthesized molecule; X.L. performed electrophysiology research and analyzed data; H.D. performed research and revised the paper; D.L. performed research *in vivo*; A.F.D. supervised chemistry design and wrote the paper; A.C. performed research *in vivo*; A.E.H. performed electrophysiology research and analyzed data and revised the paper; G.M.A. performed *in vivo* study and revised the paper; V.A. supervised chemistry design and wrote the paper; M.B. supervised and performed *in vivo* and *in vitro* study and wrote the paper.

## Additional Information

**Supplementary information** accompanies this paper at <http://www.nature.com/srep>

**Competing financial interests:** The authors declare no competing financial interests.

**How to cite this article:** Decourt, C. *et al.* A synthetic kisspeptin analog that triggers ovulation and advances puberty. *Sci. Rep.* **6**, 26908; doi: 10.1038/srep26908 (2016).



This work is licensed under a Creative Commons Attribution 4.0 International License. The images or other third party material in this article are included in the article's Creative Commons license, unless indicated otherwise in the credit line; if the material is not included under the Creative Commons license, users will need to obtain permission from the license holder to reproduce the material. To view a copy of this license, visit <http://creativecommons.org/licenses/by/4.0/>