



**HAL**  
open science

## Characterization of Urea Biosensor Based on the Immobilization of Bacteria *Proteus Mirabilis* in Interaction with Iron Oxide Nanoparticles on Gold Electrode

Yosra Braham, Houcine Barhoumi, Abderrazak Maaref, Amina Bakhrouf, Christine Grauby-Heywang, Touria Cohen-Bouhacina, Nicole Jaffrezic-Renault

### ► To cite this version:

Yosra Braham, Houcine Barhoumi, Abderrazak Maaref, Amina Bakhrouf, Christine Grauby-Heywang, et al.. Characterization of Urea Biosensor Based on the Immobilization of Bacteria *Proteus Mirabilis* in Interaction with Iron Oxide Nanoparticles on Gold Electrode. *Journal of Biosensors & Bioelectronics*, 2015, 6 (1), pp.1000160. 10.4172/2155-6210.1000160 . hal-01406863

**HAL Id: hal-01406863**

**<https://hal.science/hal-01406863v1>**

Submitted on 1 Dec 2016

**HAL** is a multi-disciplinary open access archive for the deposit and dissemination of scientific research documents, whether they are published or not. The documents may come from teaching and research institutions in France or abroad, or from public or private research centers.

L'archive ouverte pluridisciplinaire **HAL**, est destinée au dépôt et à la diffusion de documents scientifiques de niveau recherche, publiés ou non, émanant des établissements d'enseignement et de recherche français ou étrangers, des laboratoires publics ou privés.



Distributed under a Creative Commons Attribution 4.0 International License

# Characterization of Urea Biosensor Based on the Immobilization of Bacteria *Proteus Mirabilis* in Interaction with Iron Oxide Nanoparticles on Gold Electrode

Yosra Braham<sup>1\*</sup>, Houcine Barhoumi<sup>1</sup>, Abderrazak Maaref<sup>1</sup>, Amina Bakhrouf<sup>2</sup>, Christine Grauby Heywang<sup>3</sup>, Tauria Cohen Bouhacina<sup>3</sup> and Nicole Jaffrezic-Renault<sup>4</sup>

<sup>1</sup>Laboratory of Interfaces and Advanced Materials (LIMA), University of Monastir 5000, Tunisia

<sup>2</sup>Laboratory of Analysis, Treatment and Valorization of Environment Pollutants and Products, Faculty of Pharmacia, University of Monastir 5000 Tunisia

<sup>3</sup>Laboratory of Waves and Aquitaine Matter CNRS, UMR, 5798, University of Bordeaux 1, 351, crs, Liberation, 33405, Talence, France

<sup>4</sup>Laboratory of Analytical Sciences, UMR CNRS 5180, University of Claude Bernard-Lyon1, Bâtiment Raulin, 69622 Villeurbanne Cedex, France

## Abstract

In this work we describe a new urea biosensor, based on the immobilization of bacteria, *Proteus mirabilis* on gold electrode. To improve the stability of the bio-system, additional materials were used such as functionalized Fe<sub>3</sub>O<sub>4</sub> nanoparticles (NPs), cationic (PAH), anionic (PSS) polyelectrolytes, Bovine Serum Albumin (BSA) and glutaraldehyde as a cross-linking agent. The electrochemical performances of the developed bacteria biosensor was evaluated using the electrochemical impedance spectroscopy (EIS) and cyclic voltammetry measurements. The adhesion of the bacteria cell on gold electrode was evaluated using contact angle measurements. The morphology of bacteria and its interaction with Fe<sub>3</sub>O<sub>4</sub> nanoparticles were evaluated with the atomic force microscopy (AFM). As a result, a sensitive, stable and reproducible urea biosensor was developed.

**Keywords:** *Proteus mirabilis*; Fe<sub>3</sub>O<sub>4</sub>; PAH and PSS polyelectrolytes; Impedance spectroscopy; Gold electrodes; Bacterial adhesion; Atomic Force Microscopy

## Introduction

Investigating in analytical chemistry is essential for developing new methods aiming at addressing various aspects of the biological, environmental, clinical, and applied sciences and at affording the tools for chemical analysis. For example, biosensors based on metal materials such as gold has been widely explored [1], as transducers and the microorganisms as bio-receptor, offer innovative solution. To enhance biosensors performances metal nanoparticles have attracted much attention and demonstrated a wide range of applications due to their desirable chemical-physical, electronic and optical properties. The use of nanoparticles is one of the most interesting approaches to improve the performances of biosensor [2-4]. Moreover, among nanoparticles Fe<sub>3</sub>O<sub>4</sub> have been for instance considered as suitable for enzyme immobilization due to their super paramagnetic behavior and low toxicity [5,6]. In fact, Fe<sub>3</sub>O<sub>4</sub> nanoparticles were used to urease immobilization for urea biosensor development [7]. As known, the determination of urea in body fluids is of great interest in biomedical analysis. A variety of biosensors based on urease have been developed for the selective determination of urea. In fact, urease can be synthesized by many organisms like plants, fungi, invertebrates and some bacteria as well as *Proteus mirabilis*. Among them, bacteria present a multitude of choice for the development of new enzymatic biosensors with low cost and natural optimization [8].

In this study a new enzymatic biosensor based on gold electrode functionalized with Fe<sub>3</sub>O<sub>4</sub> and immobilized *Proteus mirabilis*. The adhesion and the morphology of the hydrophilic *Proteus mirabilis* to the hydrophobic Au-coated structure with PAH in presence of the Fe<sub>3</sub>O<sub>4</sub> nanoparticles were investigated using contact angle and AFM measurements, respectively.

The electrochemical performances of the developed biosensor were attempted using impedance method in terms of detection limits, sensitivity, linear range and activity.

## Material and Methods

### Chemical and biological materials

*Proteus mirabilis* bacteria used in this study were diluted in phosphate buffer solution, provided by the laboratory of analysis, treatment and valorization of environment pollutants and products of the Faculty of Pharmacia. The bacteria concentration stability over time was controlled with the optical density measurements. Potassium ferricyanide (K<sub>3</sub>[Fe(CN)<sub>6</sub>]), potassium ferrocyanide (K<sub>4</sub>[Fe(CN)<sub>6</sub>]), sodium chloride (NaCl), potassium chloride (KCl), sodium phosphate (Na<sub>2</sub>HPO<sub>4</sub>), potassium phosphate (KH<sub>2</sub>PO<sub>4</sub>), sulfuric acid (98%), hydrogen peroxide (30%), glutaraldehyde, PAH (poly (allylamine hydrochloride)), PSS (poly (sodium 4-styrene sulfonate)), bovine serum albumin (BSA), glycerol and glutaraldehyde were purchased from Sigma-Aldrich. The iron oxide carboxyl-modified magnetic nanoparticles (MNPs with a diameter of 200 nm, density of carboxyl groups > 350 μmol/g, stored in an aqueous suspension of 0.09% NaN<sub>3</sub>) were obtained from Ademtech. Phosphate buffer saline (PBS) adjusted at pH 7.4 containing 137 mM NaCl, 2.7 mM KCl, 10 mM Na<sub>2</sub>HPO<sub>4</sub> and 1.8 mM KH<sub>2</sub>PO<sub>4</sub> was used. A 5 mM of potassium ferricyanide/ferrocyanide solution prepared in PBS was used in EIS and CV experiments.

**\*Corresponding author:** Yosra Braham, Laboratory of Interfaces and Advanced Materials (LIMA), University of Monastir 5000, Tunisia, Tel: + (216) 78 500 278, Fax: + (216) 78 500 280; E-mail: [braham.yosra@yahoo.fr](mailto:braham.yosra@yahoo.fr)

**Received** June 28, 2014; **Accepted** September 08, 2014; **Published** February 15, 2015

**Citation:** Braham Y, Barhoumi H, Maaref A, Bakhrouf A, Heywang CG, et al. (2015) Characterization of Urea Biosensor Based on the Immobilization of Bacteria *Proteus Mirabilis* in Interaction with Iron Oxide Nanoparticles on Gold Electrode. J Biosens Bioelectron 6: 160. doi: [10.4172/2155-6210.1000160](https://doi.org/10.4172/2155-6210.1000160)

**Copyright:** © 2015 Braham Y, et al. This is an open-access article distributed under the terms of the Creative Commons Attribution License, which permits unrestricted use, distribution, and reproduction in any medium, provided the original author and source are credited.

## Gold electrode cleaning

Gold substrates were fabricated using standard silicon technologies. Silicon wafers were thermally oxidized to grow a 800 nm-thick field oxide. Then, a 30 nm thick titanium layer and a 300 nm thick gold layer were deposited by evaporation. They were provided by the Laboratory of Analyze and Architecture of Systems (LAAS), CNRS Toulouse. Before the modification step, the plate gold electrodes (1cm×1cm) were cleaned in acetone solution for 20 min with ultrasonic bath. After that, they were dried under a nitrogen flow and then dipped for 1 min into a piranha solution of H<sub>2</sub>SO<sub>4</sub>/H<sub>2</sub>O<sub>2</sub> (3:1 (v/v)). Finally, the gold substrates were vigorously rinsed with ultrapure water and immediately immersed in an ethanol solution and finally dried under a nitrogen flow.

## Electrochemical and surface characterization methods

**Potentiometric measurements based on ion selective electrode (ISE):** Potentiometric method based on ion-selective electrodes (ISEs) offers advantages such as simple procedure, relatively fast response time, non-destructive analysis, wide linear range with moderate selectivity [9,10] and being extensively applied for the determination of many ions. In our work the potentiometric method was based on the measure of the potential or the ammonium ions concentration in the solution as function of the time when the *Proteus mirabilis* urease interacts with urea. The potentiometric measurements were carried out using ammonium selective electrode and Ag/AgCl as reference electrode.

**Electrochemical measurements:** Electrochemical measurements were performed using a potentiostat-galvanostat (Voltalab-40) and the voltmaster 4 software with a conventional three-electrodes cell including a saturated calomel electrode (SCE) as the reference electrode, a platinum electrode (0.45 cm<sup>2</sup>) as the counter electrode and the modified gold electrode (0.07 cm<sup>2</sup>) as the working electrode. The impedance and cyclic voltammetry measurements were performed using the PBS as supporting electrolyte (pH=7.4) containing 5 mM of Fe(CN)<sub>6</sub><sup>3-/4-</sup> as redox probe. The impedance spectra were recorded in a frequency range from 100 kHz to 100 mHz at the free potential of the used redox couple. The amplitude of the alternating voltage was 10 mV. All experiments were performed at 25°C in a Faraday cage.

**Contact angle measurements:** It is generally agreed that the physicochemical properties of bacterial cell and substratum surfaces are the main factors mediating bacterial adhesion [11-13]. It is assumed that bacterial cell and substratum hydrophobicity is the key parameter controlling the non-specific interactions of the adhesion process [14]. Contact angle measurements with three different liquids (Water, formamide and diiodomethane) were performed with contact angle instrument "Digidrop" model from the society GBX (Romans, France). Every reported contact angle measurements represent an average value of at least three separated drops on different areas of the given wafer. The size and volume of the drops were kept constant since then [15]. Furthermore, the surface energy components, the total energy ( $\gamma_s$ ), the dispersive energy ( $\gamma^{LW}$ ), the acid base energy ( $\gamma^{AB} = 2\sqrt{\gamma^+ \cdot \gamma^-}$ ), the acid energy ( $\gamma^+$ ) and the basic energy ( $\gamma^-$ ) were determined from the wetting angle ( $\theta$ ) according to the Van Oss equation with polar and apolar liquids [16].

**Atomic Force Microscopy (AFM):** AFM experiments were performed on the NSI platform of LOMA (Bordeaux1), using the MultiMode NanoScope II apparatus (AFM imaging) and the Bioscope II, mounted on an Olympus inverted optical microscope and operating with the

NanosCope V controller (Veeco-Brucker, Santa Barbara, CA). This AFM is equipped with a piezo scanner (maximum XY scan range of 150  $\mu\text{m}$ ×150  $\mu\text{m}$  with vertical range Z of 12  $\mu\text{m}$ ). For each experiment, three images are recorded at the same time: trace and retrace height images, trace deflection images (signal error) and phase images in tapping [17].

## Preparation of the *Proteus mirabilis* bacteria biosensors

To ensure a high sensitivity and a good reproducibility of the biosensor, various working conditions were taken into account such as the presence of BSA and glycerol, the optimized nanoparticles concentration (0.01 mg of NPs in 500  $\mu\text{L}$  of PBS), the bacteria concentration (10<sup>7</sup>CFU/mL), the cross-linking time (30 min), the buffer solution concentration PBS (10 mM) and the number of the polyelectrolyte layers (n=3). In fact, the bacteria mixture was prepared by dissolving 5 mg of BSA in 100  $\mu\text{L}$  of PBS bacteria solution, containing 10  $\mu\text{L}$  of glycerol at pH 7.4.

The initial NPs suspension (1/500) was sonicated for 15 min, then coated during 20 min, with an initial "preconditioning" layer of PAH (5 mg/mL) which provides a positive charge, followed by a layer of PSS (5 mg/mL) of opposite charge to form the first polyelectrolyte (PE) bilayer (n=1). The NPs were further coated sequentially with PEs, in the alternating order PAH/PSS until three bilayers, followed by a layer of PAH. We obtained (NPs-(PAH-PSS)<sub>n</sub>/PAH) with n varies from 1 to 3. The PE rich supernatant phase was then eliminated and the NPs were rinsed twice with ultrapure water. The modified electrode surface was covered with 10  $\mu\text{L}$  of nanoparticles coated with (PAH/PSS)<sub>3</sub>/PAH, then 10  $\mu\text{L}$  of the bacteria mixture. Finally, the NPs-(PAH-PSS)<sub>3</sub>/PAH-*Proteus mirabilis*/Au modified electrode, (Figure 1) was kept in glutaraldehyde vapor for 30 min to allow the reticulation of the bacteria. After incubation, the electrode was rinsed with water to remove unbounded bacteria [18]. The modified electrode can then be used for electrochemical measurements and when not used it can be stored at 4°C (Figure 1). The biosensor treated by BSA, glutaraldehyde and glycerol allow a better adhesion, reticulation and a more regular distribution of bacteria without destroying the mechanical properties of the deposit membrane [19].

## Results and Discussion

### The enzymatic kinetics of *Proteus mirabilis*-urease in solution

The biochemical principle was based on the fact that urease from *Proteus mirabilis* catalyzes the hydrolysis of the transformation of urea into carbon dioxide and ammonium [20], according to the following reaction (1):

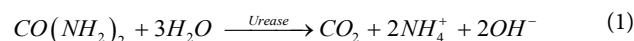
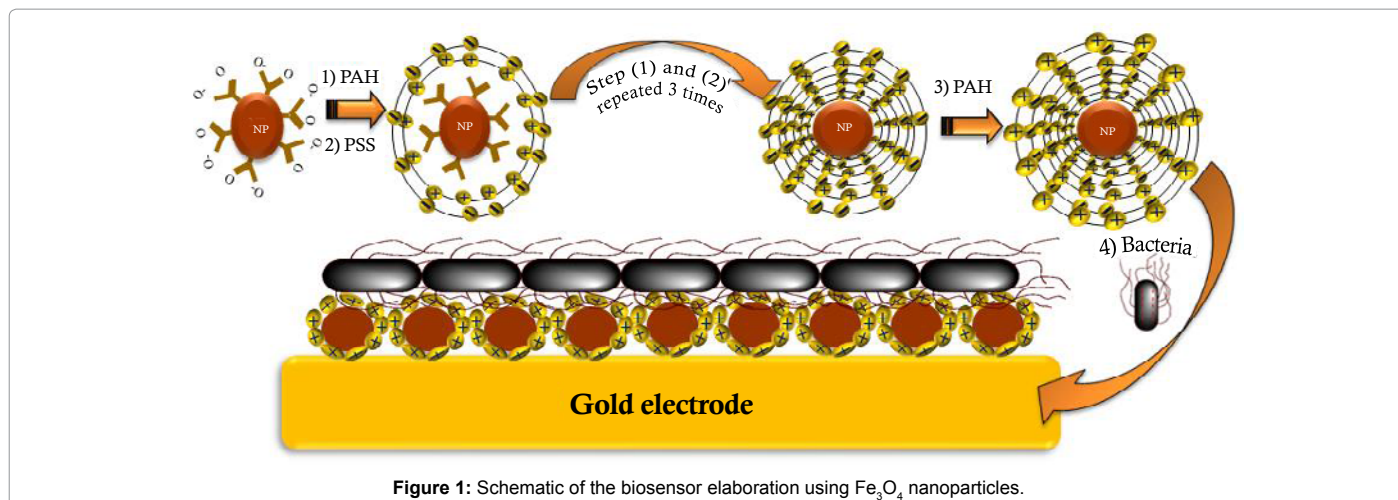


Figure 2 shows an increase of ammonium ion concentration when the injected urea concentration increases. This catalytic phenomenon can be illustrated by the kinetic behavior of the enzymatic reaction according to the concentration of the urea in solution. Furthermore, urea penetrates in bacterial cells via transport system and complex with urease in the cytoplasmic membrane. This attests the permeability of *Proteus mirabilis* membrane to urea. According to Figure 2, the curve corresponding to urea concentration 1.14 mM enables us to determine the activity of urease from *Proteus mirabilis*. This kinetic obeys to the Michaelis low and shows that the response increases with time, until reaching a plateau for ammonium ion concentrations higher or equal to 18 mM, corresponding to the saturation of urease active sites by urea molecules. We can conclude that the enzymatic activity of urease in

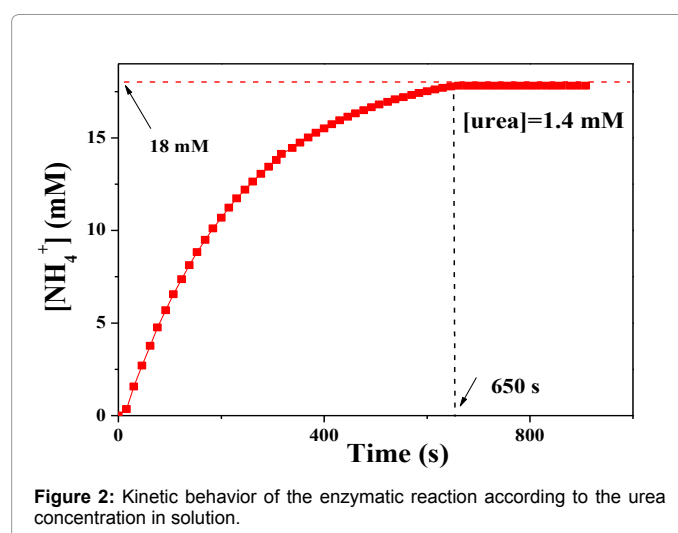


solution is equal to  $20 \mu\text{mol} \cdot \text{min}^{-1}$ .

### AFM characterization of the modified gold electrode surface

The atomic force microscopy (AFM) has enabled us to deepen our study of film formation and optimize some parameters of deposit protocols. In particular, the effect of nanoparticles, the influence of the rinsing between steps, and cleaning protocol of the electrodes, which allowed us to ensure uniformity and cleanliness of the surface, the adsorption film, the deposition efficiency, and the immobilization of bacteria. This method also gave us the opportunity to determine the size of used nanoparticles and bacteria. Figure 3, shows the height AFM image of the gold electrode treated for different scales 5 and  $1 \mu\text{m}$ . This image shows the effectiveness of cleaning protocol with the piranha solution. Figure 4 presents the aggregated nanoparticles, but our aim is to have isolated nanoparticles and to avoid the formation of aggregates. To optimize the concentration of nanoparticles a dilution step was adopted. In fact, different solutions of nanoparticles were tested and the corresponding solution was deposited on the bare electrode with stirring under ultrasound during each deposition step. Figure 5, shows a good dispersion of nanoparticles on the surface of electrode by the mixing of the nanoparticles initial solution  $1 \mu\text{L}$  with  $500 \mu\text{L}$  of ultrapure water ( $0.01 \text{ mg/mL}$ ) at  $\text{pH}=7$  and by applying ultrasonic dispersion for 15 minutes. Indeed it has been determined by AFM the nanoparticles size, it is approximately  $290 \text{ nm}$  in length,  $270 \text{ nm}$  width and  $177 \text{ nm}$  in height. From Figure 6 we can observe that the analysis of a deposit comprising nanoparticles coated with 3 and half bilayers of poly-electrolytes, shows a completely covered surface, with visible homogeneity at large scale of  $(10 \times 10 \mu\text{m}^2)$ .

The biofilm of bacteria was formed on bare gold electrode surface and by immobilization through the coated nanoparticles with polyelectrolytes process. The first method is limited, since the surface density of immobilized bacteria is weak and a lot of them are removed during the rinsing phase leading to poorly reproducible biosensor. Figure 7 shows a carpet of rod bacillus bacterium adhered on the surface of the electrode in the presence of magnetic nanoparticles. We can clearly see the flagella of these bacteria that can ensure their mobility. From the Figure 8 it is noted that the conformation of the bacteria is unchanged in the presence of magnetic iron nano-particles that shows a non-inhibitory effect of the latter. Previous work has shown that iron nanoparticles exhibit an inhibitory effect on the enzymes such as urease [7]. In our case the urease is in a favorable environment and protected by the membrane of the bacterium. This organism has a good resistance



against certain inhibitors such as nanoparticles [21].

After the step of functionalization of gold electrodes with nanoparticles and polyelectrolytes, we deposited bacteria. The topographic results in tapping mode are shown in Figure 9. These observations confirm the adhesion of bacteria on coated nanoparticles. AFM allows us to determine the size of the *Proteus mirabilis* bacteria which it is approximately  $1.8 \mu\text{m}$  in length,  $0.9 \mu\text{m}$  in width and  $0.2 \mu\text{m}$  in height Figure 10. These values are in good agreement with the bacteria size given by the literature [22].

### Contact angle measurements and adhesion tests

Contact angle can be used as powerful technique to check the effectiveness of the functionalization process. In our work we have used three liquids with different polarities (water, formamide and diiodomethane) for hydrophilic/hydrophobic character and surface energy determination (Figure 11). In fact, the contact angle measurements obtained with different test liquids, were done on the bare and the modified gold electrode. The wetting properties have been compared before and after the functionalization process. The values of the contact angles with the different probe liquids and surface energy components for the substrate surfaces and the deposit membranes are summarized in Table 1.

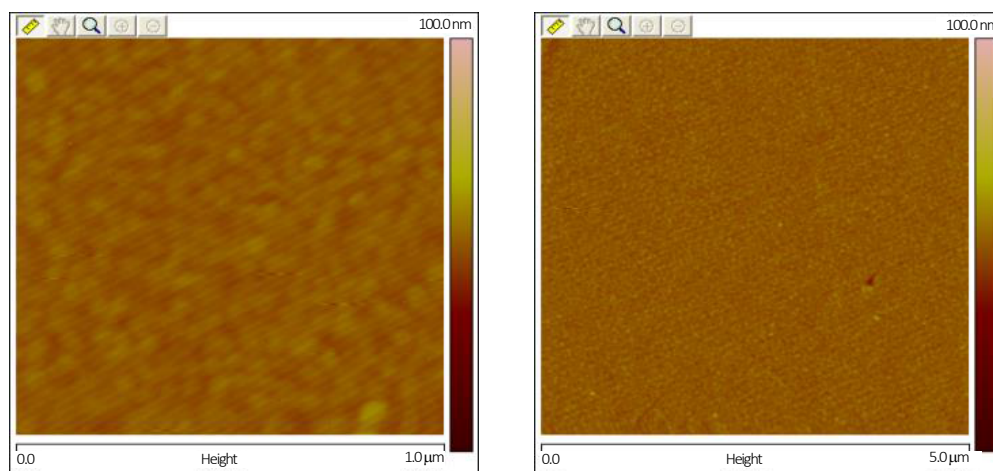


Figure 3: Height image ( $1\mu\text{m}\times 1\mu\text{m}$  and  $5\mu\text{m}\times 5\mu\text{m}$ ) obtained in AFM with the tapping mode on bare electrode.

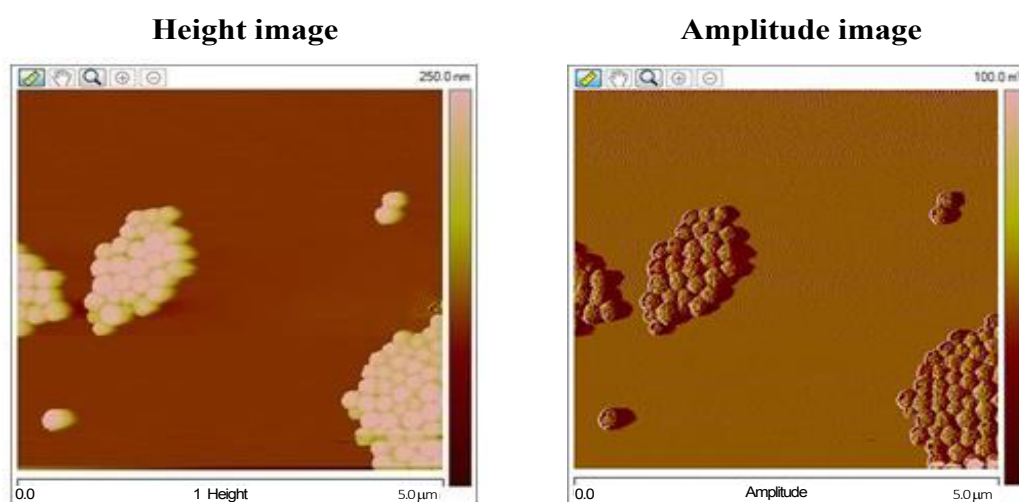


Figure 4: Height and amplitude images ( $5\mu\text{m}\times 5\mu\text{m}$ ) of aggregated nanoparticles obtained in AFM with the tapping mode on bare electrode.

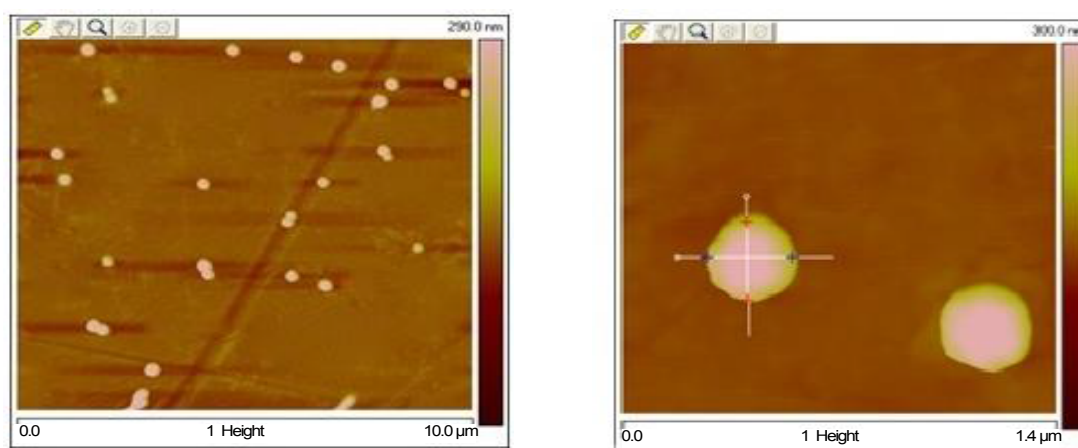
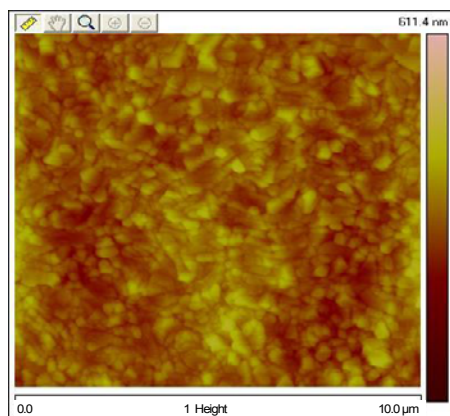


Figure 5: Height images ( $10\mu\text{m}\times 10\mu\text{m}$ ; and  $1.4\mu\text{m}\times 1.4\mu\text{m}$ ) of dispersed nanoparticles obtained in AFM with the tapping mode on bare electrode.

Height image



Amplitude image

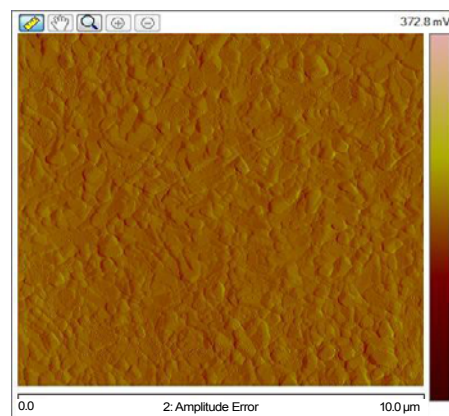
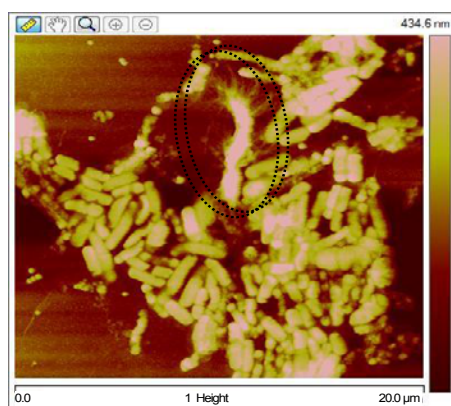


Figure 6: Height and amplitude images (10μm\*10μm) obtained in AFM with the tapping mode for surfaces functionalized with a mixture of NPs + (PAH-PSS)<sub>3</sub>-PAH.

Height image



Amplitude image

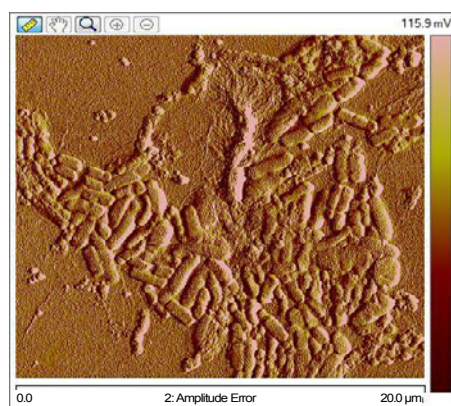


Figure 7: Height and amplitude images (20μm\*20μm) obtained in AFM with the tapping mode for surfaces modified with a mixture of NPs and bacteria.

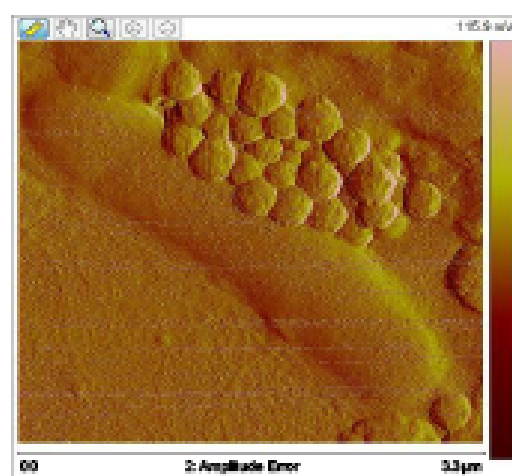
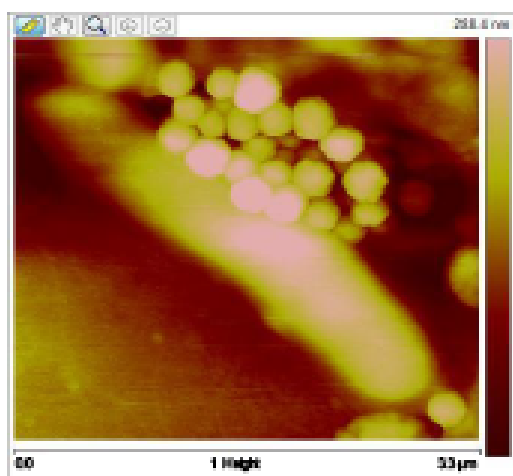
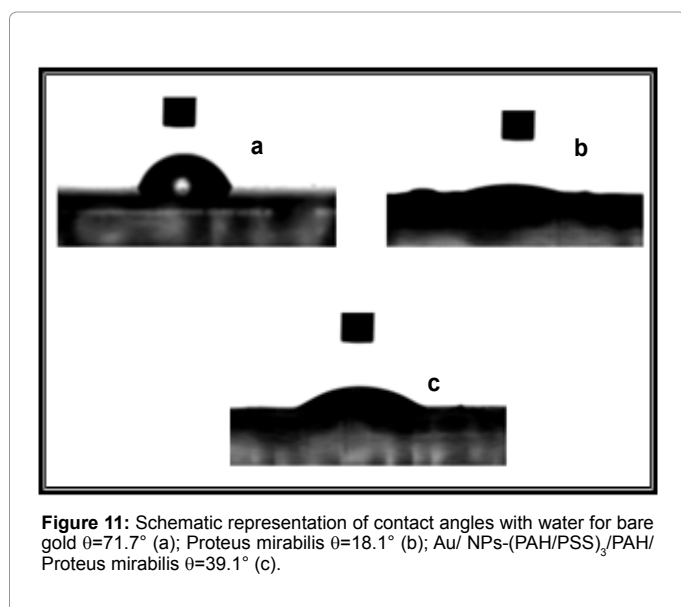
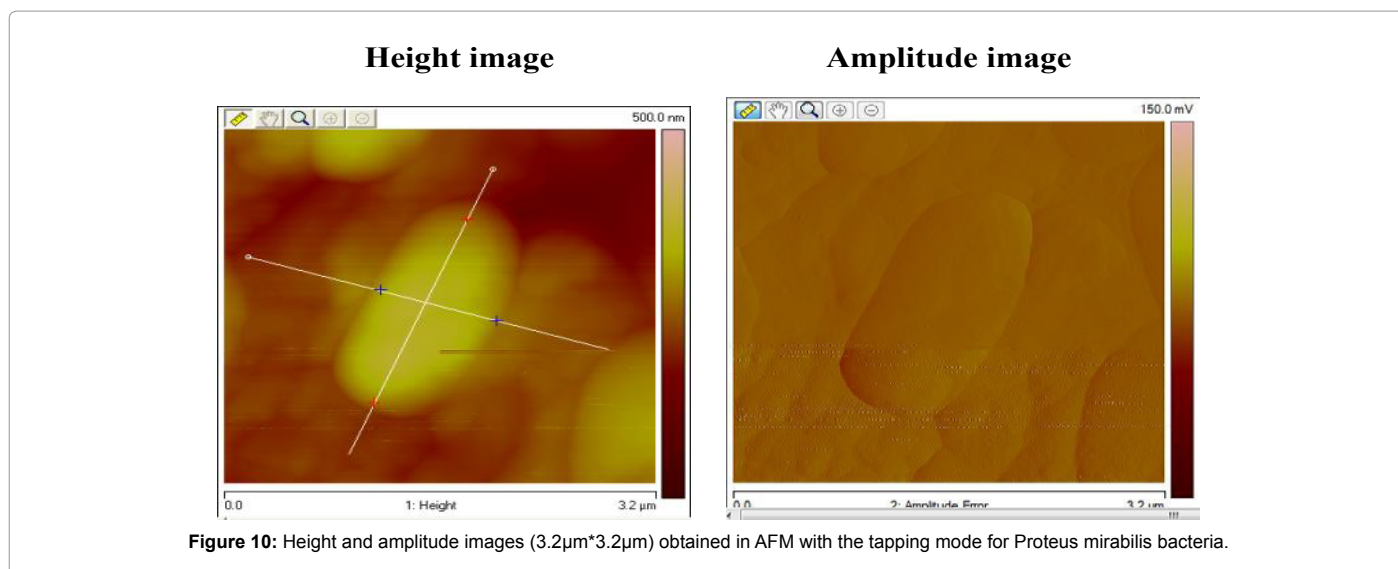
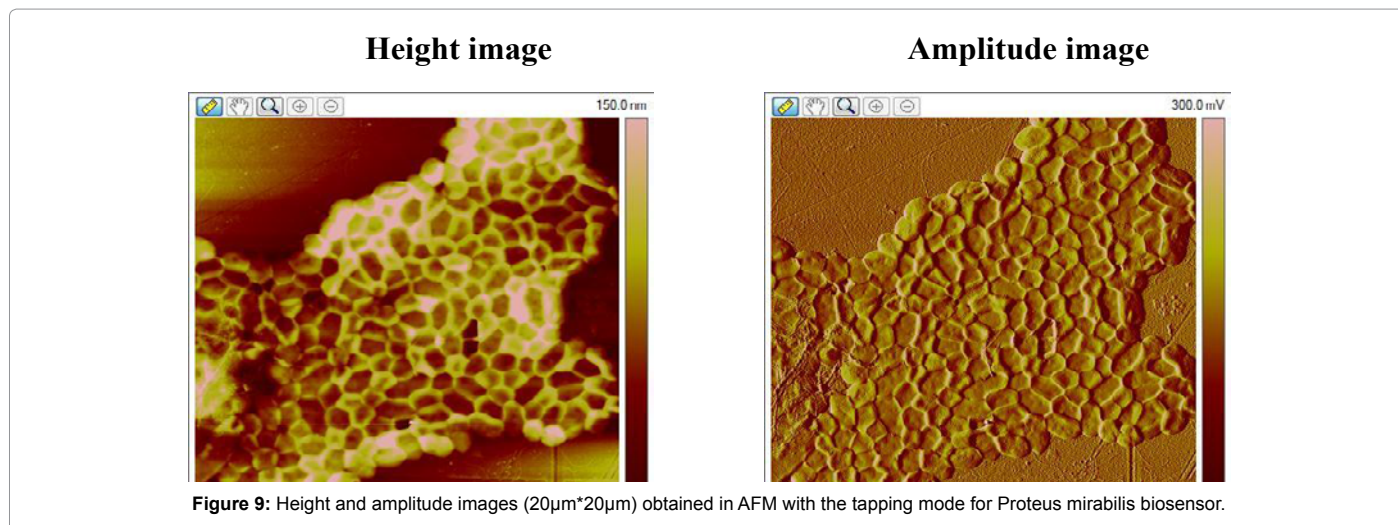


Figure 8: Height and amplitude images (3,3μm\*3,3μm) obtained in AFM with the tapping mode of bacteria interacting with nanoparticles.



In addition, repetitive contact angle measurements were carried out for the same modified surface and the deviation is about  $\pm 3^\circ$ .

The contact angle measurements show that the hydrophobic Au surface acquires a hydrophilic character when it is functionalized with the *Proteus mirabilis* bacteria. As a result, an increase in the basic energy ( $\gamma$ ) of the modified surface was observed due to the hydroxide (OH) and the carboxyl (COOH) groups localized in *Proteus mirabilis* bacteria and nanoparticles [23]. Table 2, presents the contact angles obtained using different probe liquids for *Proteus mirabilis* suspended in PBS and deposited on cellulose acetate membrane filters. With a contact angle of  $18^\circ$  we conclude that the bacterial cell presents a hydrophilic character. In adhesion phenomenon the contribution of the electrostatic forces is important, since bacteria adsorbed layer on Au electrode have generally negative surface potentials, giving rise to repulsive electrostatic interactions. Although, additional polyelectrolyte PAH layer reduces the repulsion effect and enhances the adhesion according to the positive charge generated by the  $-\text{NH}_3^+$  cationic groups.

Using the thermodynamic approach of the Lifshitz van der Waals (LW) and the acid/base (AB) interactions, the total adhesion energy

$\Delta G_{adh}^{Total}$  of a bacterium to a substratum surface in a suspending liquid can be calculated as the sum of the LW component  $\Delta G_{adh}^{LW}$  and the AB component  $\Delta G_{adh}^{AB}$  [24-26].

$$\Delta G_{adh}^{Total} = \Delta G_{adh}^{LW} + \Delta G_{adh}^{AB} \quad (2)$$

$$\Delta G_{adh}^{LW} = \left( \sqrt{\gamma_B^{LW}} - \sqrt{\gamma_S^{LW}} \right)^2 - \left( \sqrt{\gamma_B^{LW}} - \sqrt{\gamma_L^{LW}} \right)^2 - \left( \sqrt{\gamma_S^{LW}} - \sqrt{\gamma_L^{LW}} \right)^2 \quad (3)$$

$$\Delta G_{adh}^{AB} = 2 \left[ \sqrt{\gamma_L^+} \left( \sqrt{\gamma_B^+} + \sqrt{\gamma_S^+} - \sqrt{\gamma_L^+} \right) + \sqrt{\gamma_L^-} \left( \sqrt{\gamma_B^-} + \sqrt{\gamma_S^-} - \sqrt{\gamma_L^-} \right) - \sqrt{\gamma_B^+ \gamma_S^+} - \sqrt{\gamma_B^- \gamma_S^-} \right] \quad (4)$$

The prediction of the thermodynamic approach states that adhesion may occur if  $\Delta G_{adh}^{Total}$  is negative and it is energetically unfavorable if  $\Delta G_{adh}^{Total}$  is positive. Using Equations (2), (3) and (4), the values of the interfacial free energy of adhesion of *Proteus mirabilis* to the gold electrodes and its components (LW and AB) are calculated and presented in Table 3.

According to the thermodynamic approach, the negative value of the estimated energy demonstrates that the adhesion is favorable (Table 3). In fact, the adhesion process is governed by the electrostatic interactions. As a result, the negative value of the LW adhesion energy component indicates that the adhesion was favorable onto the NPs-(PAH-PSS)<sub>3</sub>/PAH modified Au surfaces with estimated total adhesion energy values of -11.2 mJ/m<sup>2</sup>. This high adhesion energy indicates that *Proteus mirabilis* bacteria adhere strongly to the hydrophobic Au surface.

### Electrochemical characterizations of the *Proteus mirabilis* biosensor

The cyclic voltammogram of soluble electro active species provides a convenient tool to monitor the various stages of the biosensor buildup on Au electrode. The Figure 12A shows the cyclic voltammograms of 5 mM [Fe(CN)<sub>6</sub>]<sup>4-/3-</sup> probe for the bare and the modified Au electrodes in PBS, pH 7.4, at scan rate of 100 mVs<sup>-1</sup>. The Au surface was modified with nanoparticles, NPs-(PAH-PSS)<sub>3</sub>/PAH-*Proteus mirabilis*. It can be seen that for a bare Au electrode, a characteristic quasi-reversible redox cycle with anodic and cathodic peak currents were obtained. When the Au surface was functionalized with nanoparticles and bacteria, the electron transfer between the redox probe and the modified surface was changed. As a result, an obvious decrease of the anodic and the cathodic peaks was observed leading to a high ΔEp value (295 mV) indicating the formation of the bioactive layer.

Electrochemical impedance spectroscopy can also give detailed information on the dielectric constant and the barrier properties of the deposit layer changes. Figure 12B shows the impedance spectra of the bare and the modified gold electrode. The bare Au electrode

reveals a very small semicircle, implying a very low electron-transfer resistance ( $R_{et}$ ) of the redox probe. When the electrode is modified with NPs-(PAH-PSS)<sub>3</sub>/PAH-*Proteus mirabilis* film, the  $R_{et}$  increases significantly. The deposit film was defined with negatively charged (COO<sup>-</sup>) of bacteria which acts as an electrostatic barrier that resists to the [Fe(CN)<sub>6</sub>]<sup>4-/3-</sup> redox probe and hinders its ability to diffuse into the layer. As a result, this phenomenon retards the electron transfer kinetics between the redox probe and the surface of the modified electrode. We note that the electrochemistry of the NPs-(PAH-PSS)<sub>3</sub>/PAH-*Proteus mirabilis*/Au modified electrode surface is still observable, indicating that the polyelectrolyte layers does not provide a very effective barrier between the electrolyte and the gold surface. The change in the charge transfer resistance is related to the electrode coverage  $\tau$  and is given by the relation as shown in the following relation (2):

$$\tau(\%) = \frac{R_e - R_e^0}{R_e} \times 100 \quad (5)$$

Where  $\tau$  is the apparent electrode coverage,  $R_{et}^0$  and  $R_{et}$  are the electron transfer resistance measured at the bare and the modified Au electrode, respectively. The coverage rates ( $\tau$ ) of the modified electrode were reported in Table 4. As a result, a higher coverage rate was observed for NPs-(PAH-PSS)<sub>3</sub>/PAH-*Proteus mirabilis*/Au electrode.

The impedance data were fitted to a simple Randles equivalent circuit presented in the Figure 13 which was made up of a parallel combination of the solution resistance ( $R_s$ ), the electron transfer resistance ( $R_{et}$ ), the constant phase element ( $C_{dl}$ ) and the Warburg impedance element ( $W$ ). Thus,  $R_{et}$  was a suitable signal for sensing the interfacial properties of the prepared biosensor during the assembly procedure. Table 4 presents the equivalent circuit parameters of the numeric simulation curves as characteristic of the various steps of the biosensor elaboration.

### Study of the urea concentration effect

The impedance sensor responses to various urea concentrations were made with NPs-(PAH-PSS)<sub>3</sub>/PAH-*Proteus mirabilis* in PBS solution (pH 7.4). Electrochemical measurements have been achieved under a free potential and varying frequency from 100 kHz to 100 mHz. Figure 14A shows the impedance spectra of the modified gold electrode for different urea concentrations. The obtained curve has a semi-circle geometrical form. As can be seen, the diameter of the semi-circle decreases when the urea concentration increases. The detection mechanism can be explained by the interaction between urea and urease biomolecule inside the *Proteus mirabilis* bacteria. Indeed, as the products of the urea hydrolysis are alkaline, an increase of urea concentration in the analyzed solution causes an increase of pH near the modified surface of the biosensor. Then this variation of pH causes

Surface	Contact angle (°)			Surface energy components (mJ/m <sup>2</sup> )				
	Water	Formamide	Diiodo-methane	$\gamma^{LW}$	$\gamma^{AB}$	$\gamma^+$	$\gamma^-$	$\gamma^{Total}$
Bare Au	71.7	31.4	31	43.8	5.6	2.4	3.3	49.4
Au /NPs-(PAH-PSS) <sub>3</sub> /PAH	93.0	43.3	43.1	40.1	9.0	8.6	3.2	41.2
Au/ NPs-(PAH-PSS) <sub>3</sub> /PAH- <i>Proteus mirabilis</i>	39.1	43.0	37.5	40.8	0.3	0	47.9	41.2

Table 1: Contact angles and surface energy components of the bare and the modified Au electrode.

	Contact angle (°)			Surface energy components (mJ/m <sup>2</sup> )				
	Water	Formamide	Diiodomethane	$\gamma^{LW}$	$\gamma^{AB}$	$\gamma^+$	$\gamma^-$	$\gamma^{Total}$
<i>Proteus mirabilis</i>	18.1	20.2	41.8	37.6	15.8	1.3	55.6	53.5
PBS <sup>b</sup>	-	-	-	22.0	35.2	17.6	17.6	57.2

<sup>b</sup>The values of  $\gamma^{LW}$  and  $\gamma^{AB}$  are taken from published data [22].

<sup>b</sup>The values of  $\gamma^+$  and  $\gamma^-$  are taken from published data [22]

Table 2: Contact angles measurements of *Proteus mirabilis* suspended in PBS.

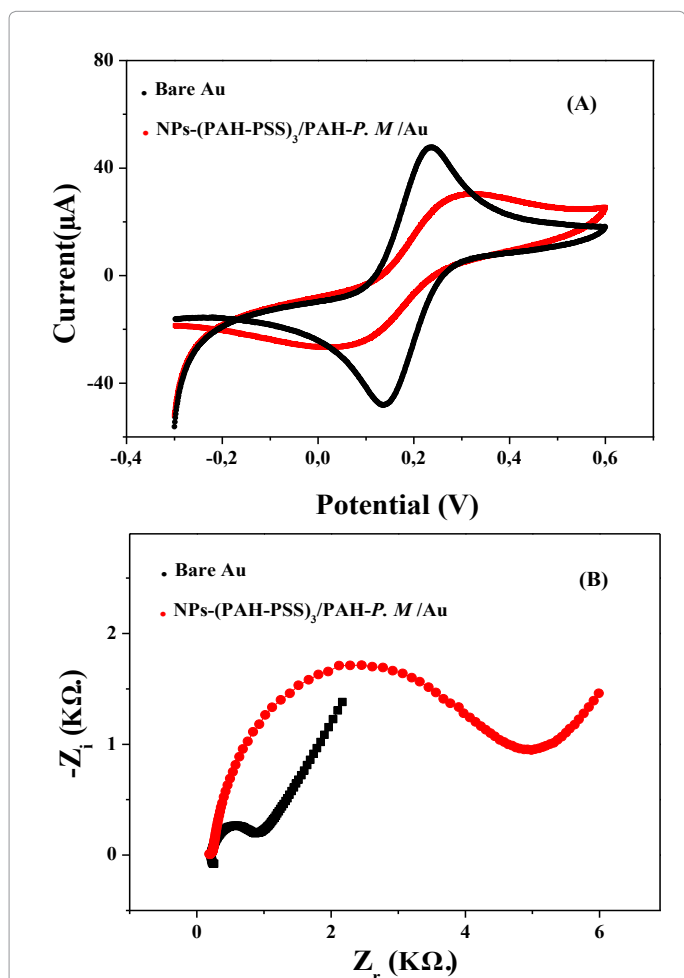


Materials	$\Delta G_{adh}^{LW}$ (mJ/m <sup>2</sup> )	$\Delta G_{adh}^{AB}$ (mJ/m <sup>2</sup> )	$\Delta G_{adh}^{Total}$ (mJ/m <sup>2</sup> )
Au	-5.5	2.7	-2.8
Au/NPs-(PAH-PSS) <sub>3</sub> /PAH	-4.7	-6.4	-11.2

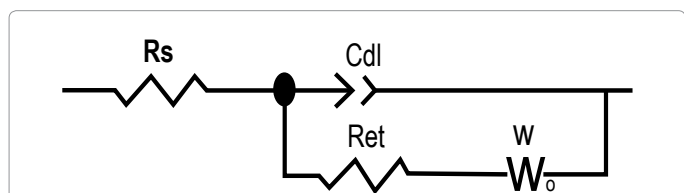
**Table 3:** Lifshitz van der Waals ( $\Delta G_{adh}^{LW}$ ), acid/base ( $\Delta G_{adh}^{AB}$ ) and total ( $\Delta G_{adh}^{Total}$ ) interfacial free energy of adhesion of *Proteus mirabilis* on Au surfaces (in millijoules per square meter).

	$\Delta E_p$ (mV)	$R_s$ ( $\Omega$ )	$C_{dl}$ ( $\mu F$ )	$R_{et}$ ( $\Omega$ )	$X^2$ ( $10^{-3}$ )	$\tau$ (%)
Au	103	210	7.2	760	1.4	0
Au/NPs-(PAH-PSS) <sub>3</sub> /PAH- <i>Proteus mirabilis</i>	295	225	6.7	5350	3.2	85

**Table 4:** Impedance parameters of the deposited layers on gold electrode obtained by experimental fitting data to the equivalent circuit model.



**Figure 12:** Cyclic voltammograms, at scan rate of 100 mVs<sup>-1</sup> (A) and (B) the Nyquist plots using a frequency range of 100 kHz to 100 mHz for the bare Au electrode and NPs-(PAH-PSS)<sub>3</sub>/PAH-*Proteus mirabilis*/Au modified electrode.

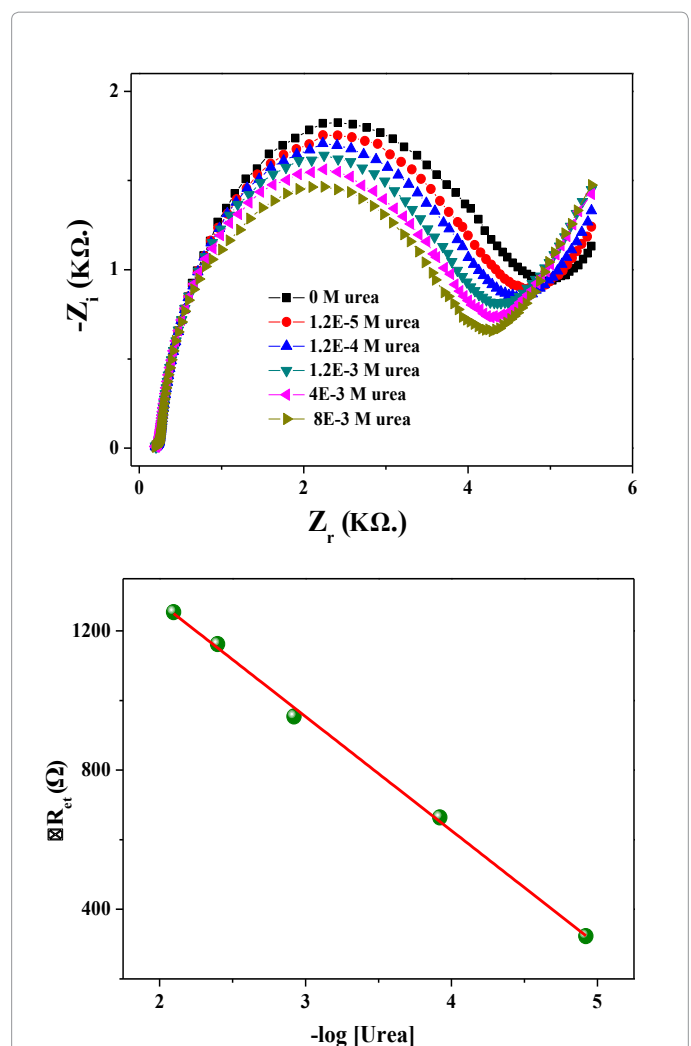


**Figure 13:** The equivalent circuit model applied to simulate the impedance spectroscopy data.

a variation of the electrode impedance which can be detected. In the Figure 14B the calibration curve shows the variation of the transfer resistance versus the urea concentration. As a result, we observe that the impedance biosensor demonstrates a good response to urea addition with high electrochemical performances. A linear relationship between the electron transfer resistance and the p[urea] was obtained with a good correlation coefficient ( $R^2=0.997$ ). Therefore, a sensitivity of 327.7 $\Omega$ /p[Urea], a detection limit of 10<sup>-4.92</sup> M and a dynamic range from 10<sup>-2</sup> M to 10<sup>-5</sup>M were obtained. The obtained result using bacteria was improved in comparison with other results reported in previous works based on urea biosensors fabricated using urease as active biomolecule [27,28].

### Conclusion

In this work, we developed a sensitive biosensor for urea detection. At first, magnetic nanoparticles were deposited on the bare gold electrode. Then bacteria were immobilized on the magnetic nanoparticles by physical adsorption using polyelectrolytes PAH and PSS. During the development of multilayer, the deposition steps have been evaluated and characterized by electrochemical method, contact angle measurements and AFM topographic technical. The biosensor



**Figure 14:** Nyquist plot of each individual urea concentration in PBS solution (pH 7.4) (A) and (B) the calibration curve of the impedimetric urea biosensor.

developed was applied to the determination of urea. Thanks to the presence of bacteria as optimized environment for urease the biosensor can be used as indicator of urea for medical analysis.

## References

- Gupta G, Rajendran V, Atanassov (2003) Laccase Biosensor on Monolayer-Modified Gold Electrode, *Electroanalysis* 15: 1577-1583.
- Yang Z, Zhang C, Zhang J, Bai W (2014) Potentiometric glucose biosensor based on core-shell Fe<sub>3</sub>O<sub>4</sub>-enzyme-polypyrrole nanoparticles. *Biosensors and Bioelectronics* 51: 268-273.
- Baghayeri M, Zare EN, Lakouraj MM (2014) A simple hydrogen peroxide biosensor based on a novel electro-magnetic poly(p-phenylenediamine)@Fe<sub>3</sub>O<sub>4</sub> nanocomposite. *Biosensors and Bioelectronics*. 55: 259-265.
- Ghaedi M, Nejati Biyareh M, Nasiri Kokhdan S, Shamsaldini S, Sahraei R, et al. (2012) Comparison of the efficiency of palladium and silver nanoparticles loaded on activated carbon and zinc oxide nanorods loaded on activated carbon as new adsorbents for removal of Congo red from aqueous solution: Kinetic and isotherm study. *Materials Science and Engineering C* 32: 725-734.
- Chauhan N, Pundir CS (2014) Amperometric determination of acetylcholine-A neurotransmitter, by chitosan/gold-coated ferric oxide nanoparticles modified gold electrode. *Biosensors and Bioelectronics* 61: 1-8.
- Dadmehr M, Hosseini M, Hani SH, Ganjali MR, Khoobi M, et al. (2014) DNA methylation detection by a novel fluorimetric nanobiosensor for early cancer diagnosis. *Biosensors and Bioelectronics* 60: 35-44.
- Sahraoui Y, Barhoumi H, Maaref A, Nicole JR (2011) A novel Capacitive Biosensor for Urea assay based on Modified Magnetic Nanobeads. *Sensors letters* 9: 2141-2146.
- Mobley HLT, Hausinger RP (1989) Microbial ureases: significance, regulation, and molecular characterization. *Microbiol. Rev* 53: 85-108.
- Ghaedi M, Montazerzohori M, Mousavi A, Khodadoust S, Mansouri M (2012) Construction of new iodide selective electrodes based on bis(trans-cinnamaldehyde)1,3-propanediimine(L) zinc(II) chloride [ZnLCl<sub>2</sub>] and bis(trans-cinnamaldehyde) 1,3-propanediimine(L) cadmium(II) chloride [CdLCl<sub>2</sub>]. *Materials Science and Engineering C* 32: 523-529.
- Ghaedi M, Naderi S, Montazerzohori M, Sahraei R, Daneshfar A (2012) Modified carbon paste electrodes for Cu(II) determination. *Materials Science and Engineering C* 32: 2274-2279.
- Bellon-Fontaine MN, Mozes N, Van-der-Mei HC, Sjollem J, Cerf O, et al. (1990) A comparison of thermodynamic approaches to predict the adhesion of dairy microorganisms to solid substrata. *Cell Biophysics* 17: 93-106.
- Gallardo-Moreno AM, González-Martín ML, Pérez-Giraldo C, Bruque JM, Gómez-García AC (2002) Serum as a factor influencing adhesion of *Enterococcus faecalis* to glass and silicone. *Applied and Environmental Microbiology* 68: 5784-5787.
- Wang J, Huang N, Pan CJ, Kwok SCH, Yang P, et al. (2004) Bacterial repellence from polyethylene terephthalate surface modified by acetylene plasma immersion ion implantation-deposition. *Surface Coatings Technology* 186: 299-304.
- Bayouh S, Othmane A, Bettaieb F, Bakhrouf A, Ben Ouada H (2006) Quantification of the adhesion free energy between bacteria and hydrophobic and hydrophilic substrata. *Materials Science and Engineering C* 26: 300-305.
- Marmur A (1994) Thermodynamic aspects of contact angle hysteresis. *Adv. Colloid Interface Sci* 50: 21-141.
- Van Oss CJ, Good RJ, Chaudhurg MK (1987) Monopolar surfaces. *Advances in Colloid and Interface Science* 28: 35-64.
- Binnig G, Quate CF, Gerber C (1986) Atomic force microscope. *Phys. Rev Lett* 56: 930-933.
- Souiri M, Mora-Ponsonnet L, Glinel K, Othmane A, Jouenne T (2009) Surface assembly on biofunctional magnetic nanobeads for the study of protein-ligand interactions, *Colloids and Surf B: Biointerfaces* 68: 125-129.
- Braham Y, Barhoumi H, Maaref A, Bakhrouf A, Jaffrezic-Renault N (2013) Modified Insulator Semiconductor Electrode With Functionalized nanoparticles for *Proteus Mirabilis* Bacteria Biosensor Development, *Materials Science and Engineering C* 33: 4504-4511.
- Ederer GM, Jackie HC, Donna JB (1971) Rapid Test for Urease and Phenylalanine Deaminase Production *Appl. Microbiology* 21: 545.
- MubarakAli D, Thajuddin N, Jeganathan K, Gunasekaran M (2011) Plant extract mediated synthesis of silver and gold nanoparticles and its antibacterial activity against clinically isolated pathogens, *Colloids and Surfaces B: Biointerfaces* 85: 360-365.
- Manos J, Belas R (2006) The genera *Proteus*, *Providencia*, and *Morganella*. In *The prokaryotes: An evolving electronic resource for the microbiological community*, Springer-Verlag 6: 245-269.
- Laviron E (1979) General expression of the linear potential sweep voltammogram in the case of diffusionless electrochemical systems. *Journal of Electroanalytical Chemistry and Interfacial Electrochemistry* 101: 19-28.
- Anderson MR, Evaniak MN, Zhang M (1996) Influence of Solvent on the Interfacial Structure of Self-Assembled Alkanethiol Monolayer. *Langmuir* 12: 2327-2331.
- Seydel U, Lindner B, Wollenweber HW, Rietschel ET (1984) Structural studies of the lipid A components of enterobacterial lipopolysaccharides by laser desorption mass spectrometry. Location of acyl groups at the lipid A backbone. *European Journal of Biochemistry* 145: 505-509.
- Hallab NJ, Bundy KJ, O'Connor K, Moses RL, Jacobs JJ (2001) Evaluation of metallic and polymeric biomaterial surface energy and surface roughness characteristics for directed cell adhesion. *Tissue Engineering* 7: 55-71.
- Barhoumi H, Maaref A, Jaffrezic-Renault N (2011) Urea impedimetric biosensor based on modified gold microelectrode with 2-amino-6-purinethiol. *Sensors letters* 9: 2116-2122.
- Bouriga S, Hafaid I, Korri-Youssoufi H, Maaref A, Jaffrezic N (2009) A novel urea biosensor based on modified electrodes with urease immobilized on poly(N-hydroxyphthalimide-pyrrole-co-pyrrole) film incorporating ethyl amine ferrocene as redox marker. *Sensors Lett* 7: 731-738.

**Citation:** Braham Y, Barhoumi H, Maaref A, Bakhrouf A, Heywang CG, et al. (2015) Characterization of Urea Biosensor Based on the Immobilization of Bacteria *Proteus Mirabilis* in Interaction with Iron Oxide Nanoparticles on Gold Electrode. *J Biosens Bioelectron* 6: 160. doi: [10.4172/2155-6210.1000160](https://doi.org/10.4172/2155-6210.1000160)

## Submit your next manuscript and get advantages of OMICS Group submissions

### Unique features:

- User friendly/feasible website-translation of your paper to 50 world's leading languages
- Audio Version of published paper
- Digital articles to share and explore

### Special features:

- 400 Open Access Journals
- 30,000 editorial team
- 21 days rapid review process
- Quality and quick editorial, review and publication processing
- Indexing at PubMed (partial), Scopus, EBSCO, Index Copernicus and Google Scholar etc
- Sharing Option: Social Networking Enabled
- Authors, Reviewers and Editors rewarded with online Scientific Credits
- Better discount for your subsequent articles

Submit your manuscript at: <http://www.omicsonline.org/submission>