



**HAL**  
open science

## **Experimental study of bubble sweep-down in wave and current circulating tank: Part II-Bubble clouds characterization**

Sylvain Delacroix, Gregory Germain, Benoit Gaurier, Jean-Yves Billard

### ► **To cite this version:**

Sylvain Delacroix, Gregory Germain, Benoit Gaurier, Jean-Yves Billard. Experimental study of bubble sweep-down in wave and current circulating tank: Part II-Bubble clouds characterization. *Ocean Engineering*, 2016, 120, pp.88-99. <10.1016/j.oceaneng.2016.05.008>. <hal-01392592>

**HAL Id: hal-01392592**

**<https://hal.science/hal-01392592v1>**

Submitted on 4 Nov 2016

**HAL** is a multi-disciplinary open access archive for the deposit and dissemination of scientific research documents, whether they are published or not. The documents may come from teaching and research institutions in France or abroad, or from public or private research centers.

L'archive ouverte pluridisciplinaire **HAL**, est destinée au dépôt et à la diffusion de documents scientifiques de niveau recherche, publiés ou non, émanant des établissements d'enseignement et de recherche français ou étrangers, des laboratoires publics ou privés.



HAL Authorization

# Experimental study of bubble sweep-down in wave and current circulating tank: Part II—Bubble clouds characterization

Sylvain Delacroix<sup>a</sup>, Grégory Germain<sup>a,\*</sup>, Benoît Gaurier<sup>a</sup>, Jean-Yves Billard<sup>b</sup>

<sup>a</sup> IFREMER, Marine Structures Laboratory, 150 Quai Gambetta, 62321 Boulogne-sur-Mer, France

<sup>b</sup> IRENAV, Ecole Navale, 29240 Brest, France

---

## A B S T R A C T

In this second part, images acquired from the specific trials developed in order to study the phenomenon of bubble sweep-down are analysed. A post-processing method has been developed to analyse the two air entrainment mechanisms described in the first part, for several test configurations. Bubble clouds are described in terms of depth, area and velocity for both vortex shedding and breaking wave bubble clouds. A parametric study is also performed to calculate the influence of each test parameter on the frequency of bubble generation. It is demonstrated that the occurrence of bubble clouds is proportional to the wave height, with a considerable influence of the phase shift between waves and motions. The overall results provide new elements for the understanding and the study of the phenomenon, with the final objective of obtaining a reliable tool that facilitates the design of research vessels.

---

### Keywords:

Bubble sweep-down  
Experimental trials  
Ship motions  
Bow waves

---

## 1. Introduction

Bubble generation by wave breaking and body-wave interaction is a source of diverse interest. For naval ships, this kind of bubbles generates underwater sound and a wake visible far behind the ship. In the particular case of research vessels, bubble generation must be avoided to reduce the degradation of acoustic equipment performances. Indeed, in bad weather conditions, the ship bow wave generates a significant aeration carried out by the flow under sonar locations. This phenomenon of bubble sweep-down must be prevented as much as possible in order to ensure high quality acoustic surveys (Delacroix et al., 2016), even if today there are no experimental and numerical tools allowing the exact reproduction of bubble generation by a ship's bow under waves and motions.

As shown in the first part of this study (Delacroix et al., 2014), bubble clouds are caused by the body-wave interaction in the bow vicinity of the ship. In the past, two kinds of wave breaking processes have been widely studied and described: spilling and plunging. In spilling breakers, turbulent fluid from the crest spills down the front face, where bubbles and droplets are formed. The plunging breaking wave is more energetic. The forward face of the crest turns into a jet that impacts the front face and the air cavity formed is entrained downward almost instantaneously into a

turbulent two-phase flow. In both cases, bubble generation appears in the regions of high vorticity and turbulent breakdown. Experimental works of Duncan (1981, 1983) and Bonmarin (1989) described the spilling breaking waves dynamics used to develop theoretical models (Cointe and Tulin, 1994). Particle Image Velocimetry (PIV) systems enabled a better investigation of velocity and vorticity fields in quasi steady breaking waves (Lin and Rockwell, 1995; Dabiri and Gharib, 1997). Many studies (Lamarre and Melville, 1994; Loewen et al., 1996; Deane and Stokes, 2002; Blenkinsopp and Chaplin, 2007) have been dedicated to the measurement of void fraction and bubble size distribution in plunging breaking waves. Chanson and Summings (1994), Cummings and Chanson (1997) studied the air entrainment mechanism by a plunging jet and developed a model to predict the sizes of the entrapped bubbles, the maximum penetration depth and the air-water gas transfer, and applied this model to plunging breaking waves. Kiger and Duncan (2012) also reviewed the mechanisms of air entrainment by a plunging jet, and the application to plunging breakers, pointing out the insufficiencies of the model to obtain a global air-entrainment model for plunging breaking waves. These works brought a lot of knowledge on the bubble generation mechanisms and are used as references in the development of numerical models of air entrainment around surface ships in stationary flows (Carrica et al., 1999; Moraga et al., 2008; Ma et al., 2011).

Despite all these studies and measurements of air-entrainment, the experimental characterization of bubble generation by the breaking bow waves of a ship is limited. The behaviour of these waves, depending on the bow geometry and the Froude number,

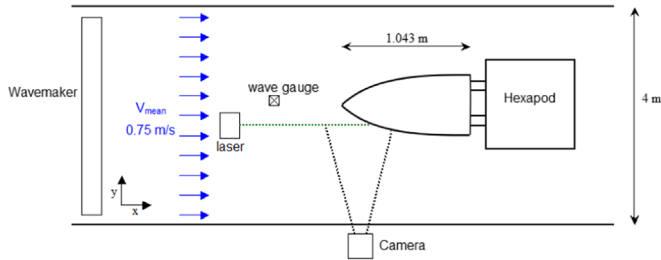


Fig. 1. Drawing of the experimental set-up showing the wavemaker and the light sheet generation system location.

have been well studied by Noblesse et al. (2008, 2013) and Delhommeau et al. (2009). However, studies of bubble generation in this configuration are scarce. Waniewski et al. (2001) used IVFM (Impedance Void Fraction Meter) to measure the void fraction in a breaking bow wave simulated by a deflecting plate. Shakeri et al. (2009) and Tavakolinejad (2010) have developed a 2D+t technique allowing the simulation of a 21.03 m model at 27.5 knots during which bubble sizes and void fraction have been acquired by a shadowgraph measurement system. Both studies focused on thin and fast ship's steady bow wave in calm seas. The influence of sea states and motions, which are significant on the acoustic survey efficiency, is not considered.

In this paper, we study bubble generation around a ship model submitted to waves and motions in order to understand the mechanisms of air entrainment at real scale despite the similarity issues discussed in the first part of this study. A quantification of these mechanisms is performed on a 1/30 model of the *Pourquoi pas?*, corresponding to a ship model of 3.13 m length between perpendiculars (Lpp), 0.67 m beam and 0.18 m draft, in a wave and current tank. Delacroix et al. (2014) describe the experimental setup developed to reproduce the real conditions of bubble sweep-down in a circulating tank (presented in Fig. 1). Acquisition systems and first observations of bubble generation are also detailed. This study was facilitated by the use of a hexapod allowing to consider the four base configurations: (1) with current only, (2) with current and waves, (3) with current and motions and (4) with current, waves and motions. Two phenomena of air entrainment have been observed: air entrainment by vortex shedding or by the breaking bow waves, for which a schematic description is given in Fig. 2. The distinct bubble clouds (as opposed to single bubbles) frequency are recalled in Fig. 3.

The interaction between the turbulent incoming flow and the bow generates low frequent vortex shedding clouds (configuration 1). This phenomenon is present in the four configurations with similar frequencies and the hull motions may amplify the amount of air entrained. Configuration 2 shows that the impact of waves on the bow generates breaking waves and a higher frequency of

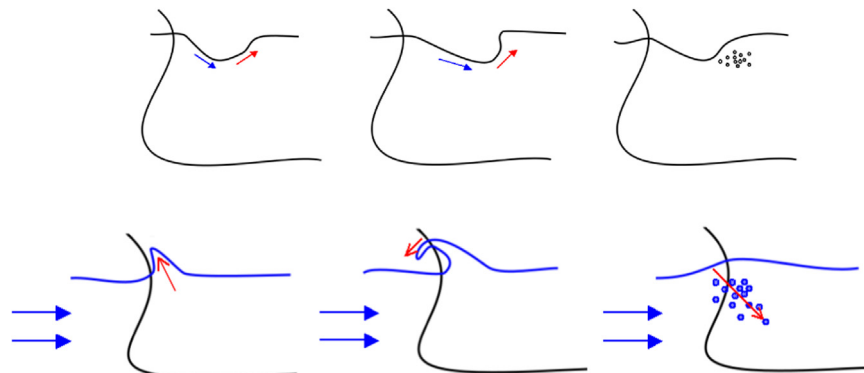


Fig. 2. Schematic description of the vortex shedding and breaking wave clouds.

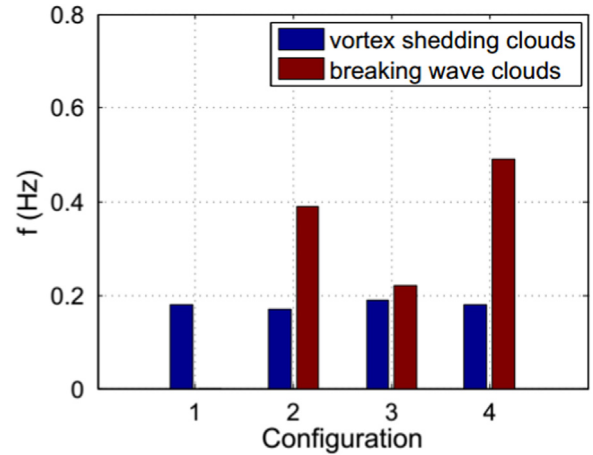


Fig. 3. Frequency of occurrence of the vortex shedding and breaking wave clouds for the 4 base configurations.

bubble generation. Configuration 3 with motion also generates some breaking waves. The fourth configuration with waves and motions corresponds to the highest frequency of bubble clouds.

In this second part, the methodology of image post-processing is presented in Section 2, while the results in terms of bubble clouds characterization in Section 3. Section 4 is devoted to study the influence of several parameters on bubble generation, and finally a discussion about the results and their generalization are discussed in Section 5.

## 2. Configurations and analysis method

The experimental setup was developed to simulate real conditions of bubble sweep-down in a wave and current circulating tank. Many parameters are involved in the bubble generation (current speed, waves and motion characteristics, etc.). Several configurations have been carried out to characterize the phenomenon in the tank and are detailed in this section. Typical bubble clouds are studied to describe the mechanisms of air entrainment. The image analysis method to obtain the bubble clouds characteristics and the clouds occurrence in each configuration is described below.

### 2.1. Test configurations

Numerous tests were conducted to characterize the influence of each parameter of the experiment on the phenomenon. The parameters of these tests are given in Table 1.

**Table 1**  
Description of the four base configurations used to study bubble sweep-down. The data in brackets refer to the variation of each parameter for the parametric study tests.

Config.	V	Waves (knots)		Motions	
		A (mm)	f (Hz)	AC	f (Hz)
1 (19–20)	8 (4–6)	No –	No –	No –	No –
2 (5–9) (10–12) (21–22)	8 – (4–6)	75 (20–85) –	0.85 – (0.65–1.0)	No – –	No – –
3 (13–15) (16–18) (23–24)	8 – (4–6)	No – –	No – –	1 (0.75–1.5) –	0.85 – (0.65–1.0)
4 (25–26)	8 (4–6)	75 –	0.85 –	1 –	0.85 –

- Runs 1–4 for the 4 base configurations, allowing the independent study of waves and motions.
- Runs 5–12 to study the influence of the wave amplitude and frequency. The amplitude  $A$  entered in Table 1 referred to the wavemaker input and is not exactly the mean amplitude measured.  $A=20, 40, 55, 65$  and  $85$  mm with  $f=0.85$  Hz respectively for runs 5–9 and  $f=0.65, 0.75$  and  $1.00$  Hz with  $A=75$  mm for runs 10–12.
- Runs 13–18 to study the influence of motions amplitude and frequency. The Amplitude Coefficient  $AC=0.75, 1.25$  and  $1.50$

with  $f=0.85$  Hz for runs 13–15 and  $f=0.65, 0.75$  and  $1.00$  Hz with  $AC=1$  for runs 16–18.

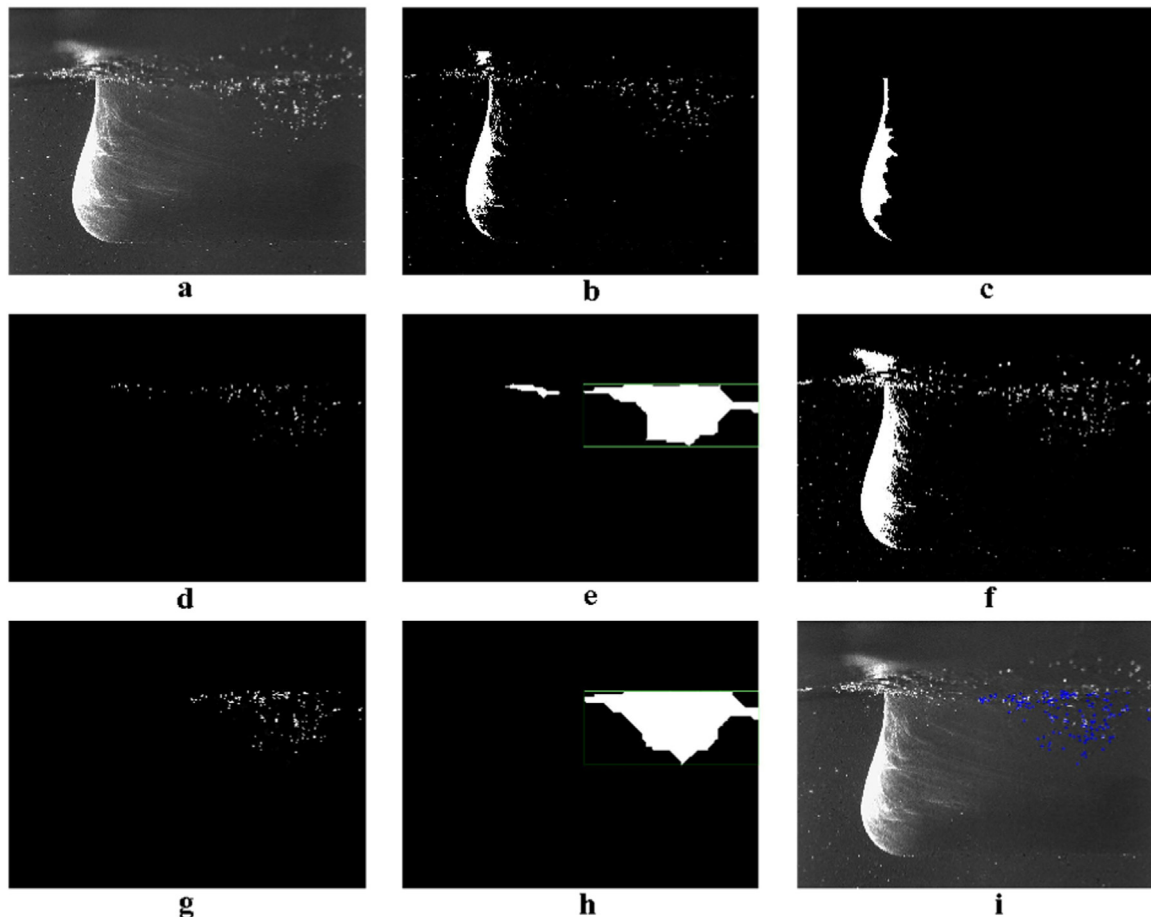
- Runs 19–26 to study the influence of current speed: the four base configurations were repeated for the equivalent speeds of 4 and 6 knots.
- Runs 27–30 to study the influence of the synchronism between the waves and motions, configuration 4 was repeated with four different phase shifts.
- Runs 31 and 32 to study the influence of the turbulence of the flow on bubble generation in the circulating tank. The presence of the wavemaker upstream generates a highly turbulent flow with a Turbulent Intensity  $Tl=15\%$ . In order to work with similar incoming flows, configurations 1 and 3, without waves, were also performed with the wavemaker upstream. These two configurations were repeated without the wavemaker, which corresponds to a turbulence reduction down to  $Tl=3\%$ .

The acquisition system simultaneously records images, waves and motions measurements. The images were acquired at a 15 Hz frequency on periods of 180 s for each run, corresponding to 2700 images.

## 2.2. Image analysis method

The image analysis allows the characterization of the phenomenon of bubble generation in a circulating tank and a better understanding of the influence of each parameter of the experiment.

In Fig. 4, several steps of the image analysis method are shown. All the images are exported from the acquisition system and post-



**Fig. 4.** Visualization of several steps of the image analysis, from the raw image (a) to the aeration detection (g) and the cloud area location (h).

processing software Dynamic Studio (Dantec Dynamic A/S, 2010), and treated via a grey level analysis. It should be noted here that the 2D detection of a 3D phenomenon induces a measurement bias which should be taken into account in future works.

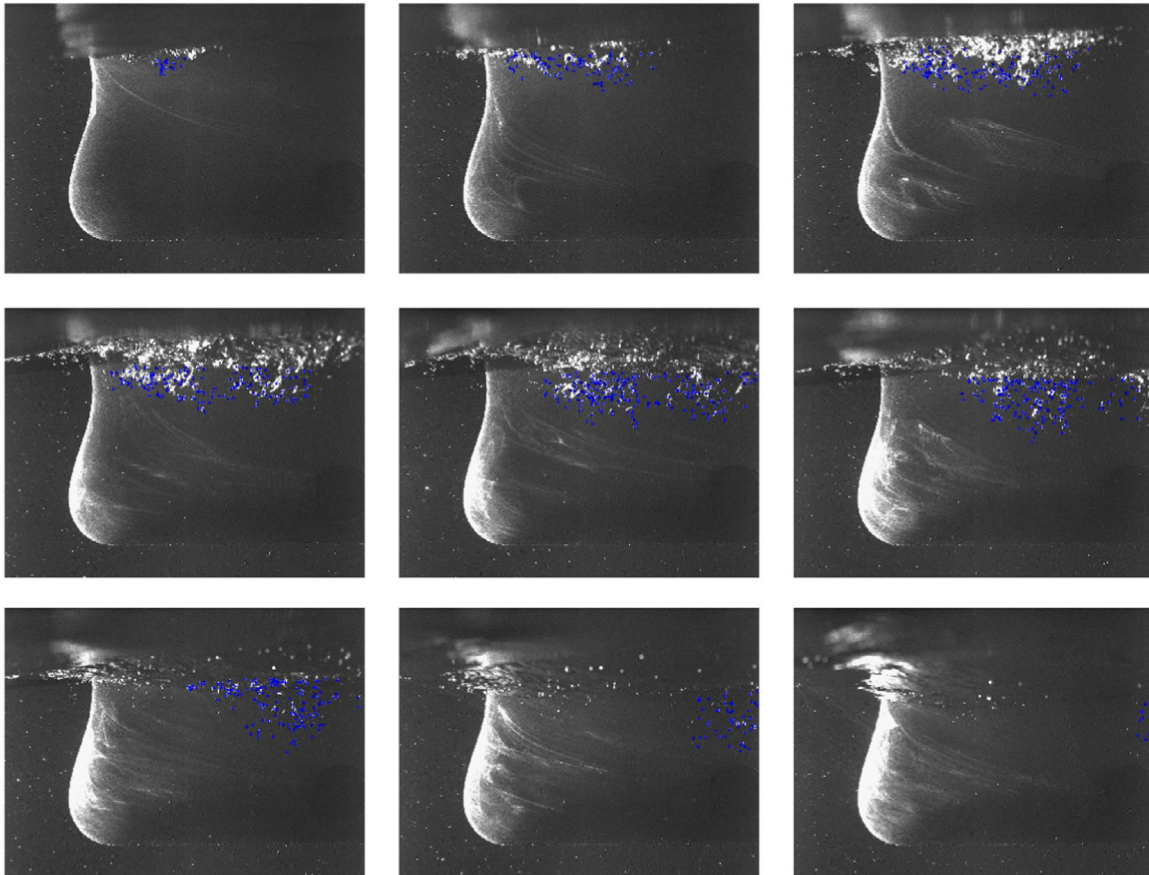
The raw image (a) is converted to a binary image (b) for edge detection, based on the Prewitt method (Prewitt, 1970), with a first grey level. The presence of hull reflections is clearly indicated and this image allows to detect the bow area (c) corresponding to the largest zone detected. The air–water interface at the bow is then easily detectable at the top of this area. In this paper the free surface is assumed to be horizontal on the image. A specific study is undertaken to obtain a better detection of the free surface (Dussol, 2015) but this approximation does not prevent the study of bubble clouds properties. To isolate the bubble light reflections from other reflections (ship bow, free surface, etc.), we focus on a specific area of the image: below the free surface line and downstream of the bow area detection. We also limited the automatic detection of bubbles with equivalent diameters (defined as  $d = \sqrt{4 \times Area/\pi}$ ) larger than  $d_{min} = 0.6$  mm to avoid any confusions between the bubbles and other tank particles. The bubbles are then identified (d), as the bubble clouds (e) defined as the area encompassing sufficiently close to the detected bubbles.

A second loop is performed with a higher grey level (f) to obtain more detailed information in the location of the largest cloud. Image (g) shows the final aerations detected in the region. The majority of these detections are single bubbles but may in some cases be an agglomeration of several bubbles. Hereafter it is referred to as “aerations”. Image (h) shows the final cloud area detection and in image (i) the aerations detected are marked on the raw image.

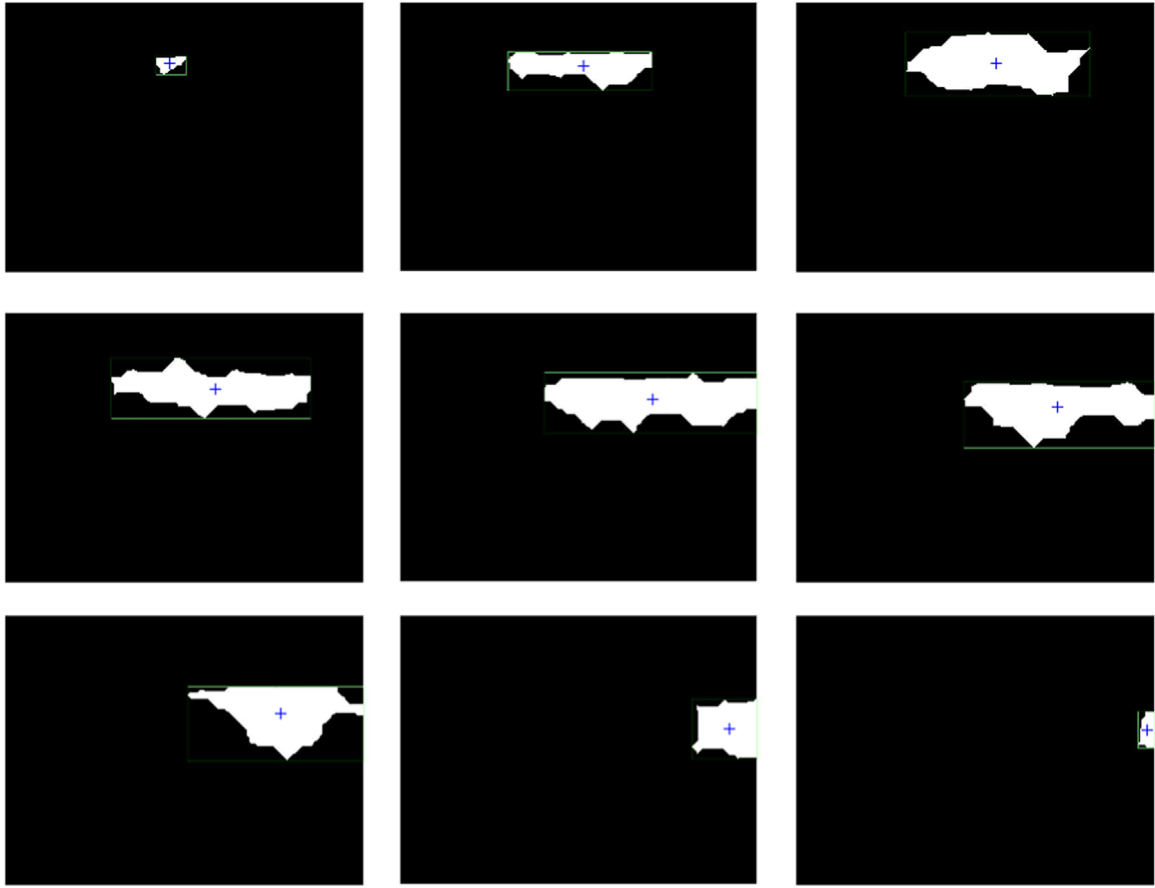
The application of the image analysis on a breaking wave cloud sequence is presented in Figs. 5 and 6. Fig. 5 shows the detection of aerations on each image while Fig. 6 shows the evolution of the bubble clouds area. This image analysis method allows an automatic detection of bubbles. In this way the bubble cloud frequency, but also the cloud area (as shown in Fig. 6), the aeration size and quantity, the cloud density (defined as the ratio of aerations area on the cloud area), the maximal depth of penetration and the global cloud evolution (horizontal and vertical velocities) can be calculated. The instrumentation system calibration led to a space discretization of 0.225 mm.

Due to the complexity of the experiments, the light is not always perfect and may vary because of the wave and model motions. Moreover, these analyses do not take into account depth of field, which affects the precision of the measurements. However, this post-processing provides many valuable data for the characterization of the bubble generation. The relatively limited number of images enables a visual verification of the aerations detected on each image of the sequence. It also enables to fix the parameters used during the process, like the grey levels or the definition of the cloud, with very low potential errors on the calculated properties (bubble cloud frequency, area, depth, etc.), as illustrated in Figs. 7 to 9. The error analysis on these properties calculations was detailed in Delacroix (2015).

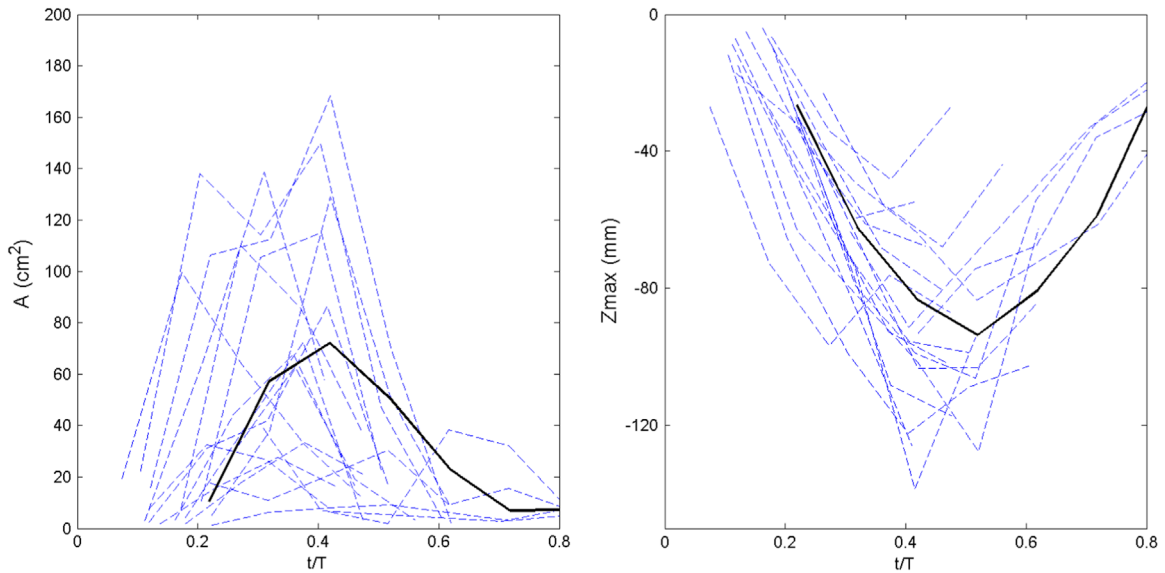
Fig. 7 shows the evolution of the cloud areas (left graph) and the maximum bubble depths (right graph) for the second configuration. As explained in detail in the following section, each dotted line represents a significant cloud of bubbles. The bold black curves are the average of these properties, obtained by taking into account only the deepest clouds (exceeding 80 mm of maximum depth).



**Fig. 5.** Sequence of a breaking wave bubble cloud, from configuration 2 with current and waves, with the aerations detected by the image analysis marked in blue. (For interpretation of the references to color in this figure caption, the reader is referred to the web version of this paper.)



**Fig. 6.** Evolution of the bubble cloud area (sequence of the breaking wave showed on Fig. 5). The '+' gives the location of the bubbles cloud center.



**Fig. 7.** Bubble clouds properties (Area and maximal depth) in configuration 2: current and waves, obtained by the image analysis method.

The influence of the first grey-level threshold choice is shown in Fig. 8. We can notice that this threshold level has very little influence on the maximum depth detected. However, the areas obtained vary more significantly.

The average described on these graphs are obtained for 5 thresholds of grey levels: 0.65; 0.70; 0.75; 0.80 and 0.85. The grey levels 0 and 1 correspond to a completely black or white pixel respectively. If the grey level threshold is low it is easier to detect

reflections, even less intense, but if the grey threshold is high only the most intense reflections are detected, as illustrated in Fig. 9. On the image on the left, as the threshold is too low (0.55) reflections that are not caused by bubbles are detected. The right hand side image represents a too high threshold, many bubbles not being detected.

The first step in the selection of a grey level threshold is to verify that neither situation is occurring in the entire sequence.

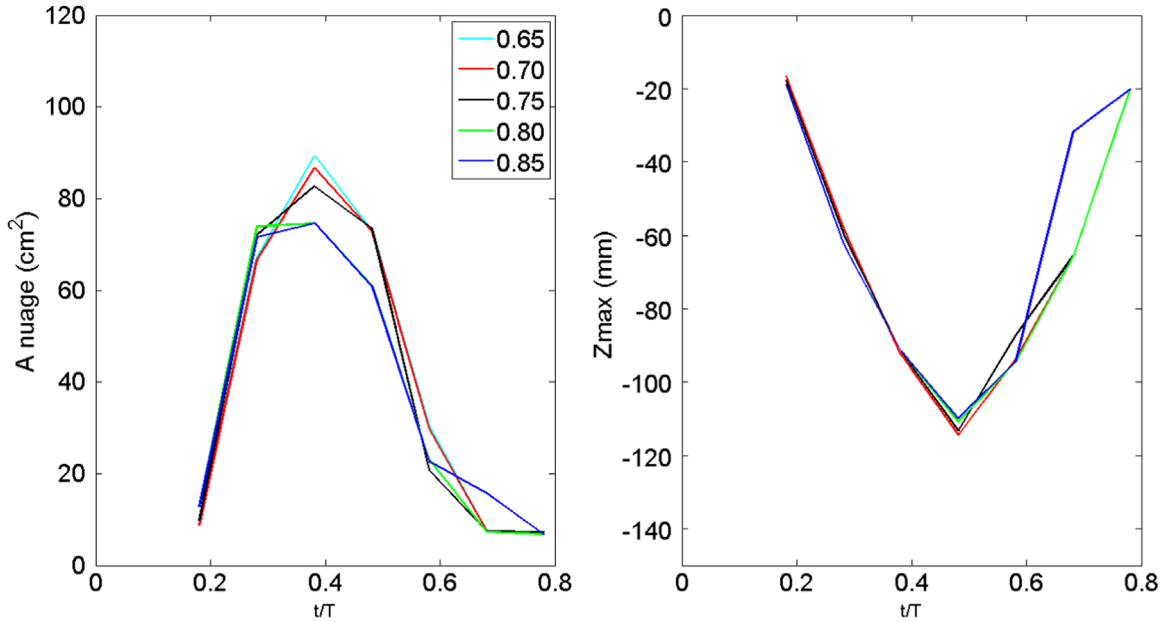


Fig. 8. Influence of the first grey level threshold on the two main mean properties: clouds area and maximum depth.

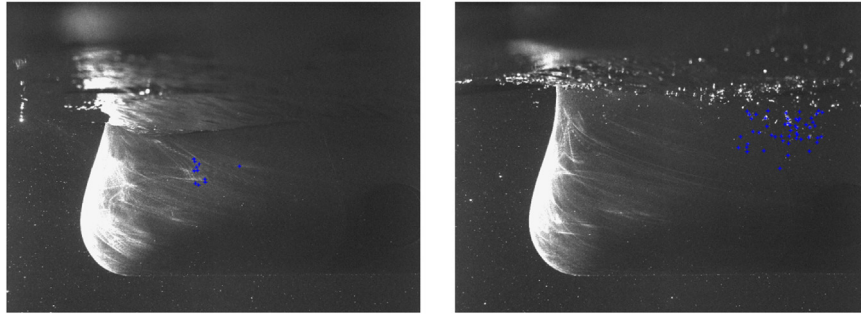


Fig. 9. Visual setting of the grey level threshold. Left: threshold is too low (0,55). Right: threshold is too high (0,85).

Given the number of images per sequence (1530) this step may be done by operator visualisation. On each sequence we can verify that the detection criteria are adequately chosen.

The curves in Fig. 8 give an idea of the measurements accuracy. The thresholds of 0.85 and 0.80 are too high and are not taken into account. Errors of about 5 cm<sup>2</sup> are observed for the mean clouds area (6.2% of error) and of a few millimetres for the maximum depth (an error of 3.6%).

This method is used in the next section for the characterization of the dynamics of bubble clouds.

### 3. Characterization of bubble clouds

Bubble clouds of the four base configurations are analysed thanks to the image post-processing described in Section 2.2. Figs. 10–13 show the evolution of the significant clouds, defined as being observable on at least four consecutive images. Each blue dotted curve corresponds to a significant cloud, while the black bold line corresponds to the mean value. Three properties are represented in these figures: the cloud area, the maximal depth and the vertical velocity of the clouds (determined from the cloud center locations). All the

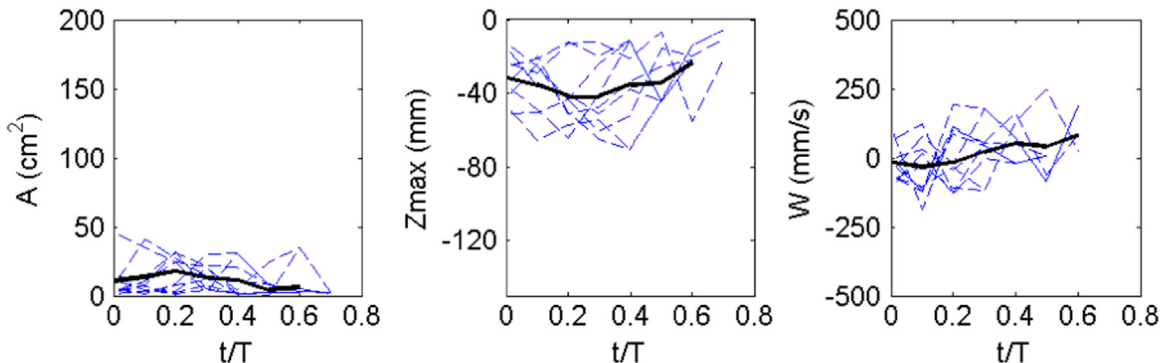
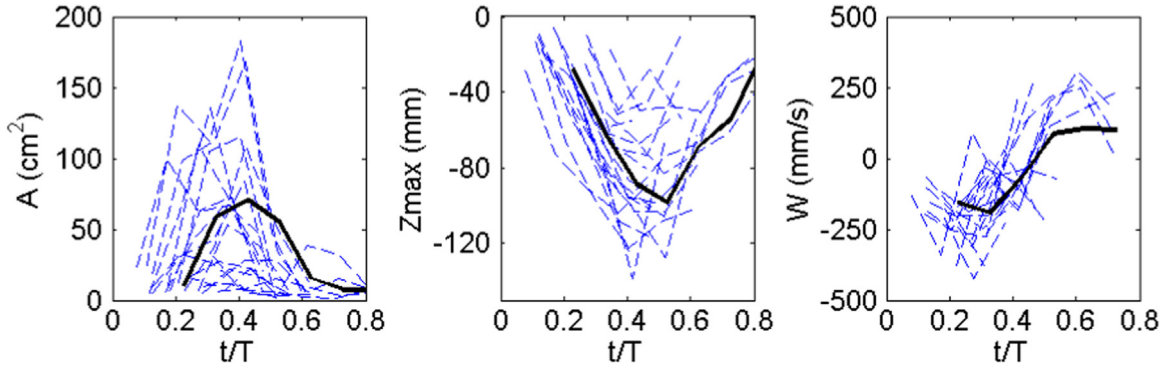
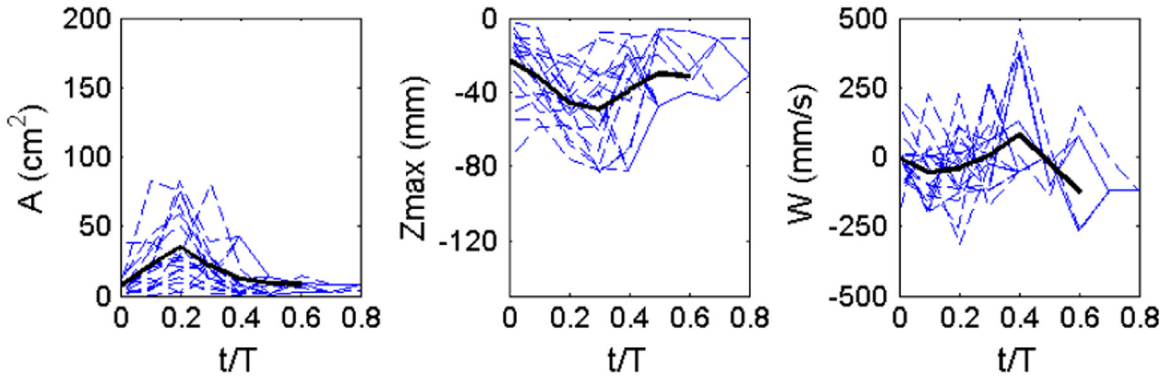


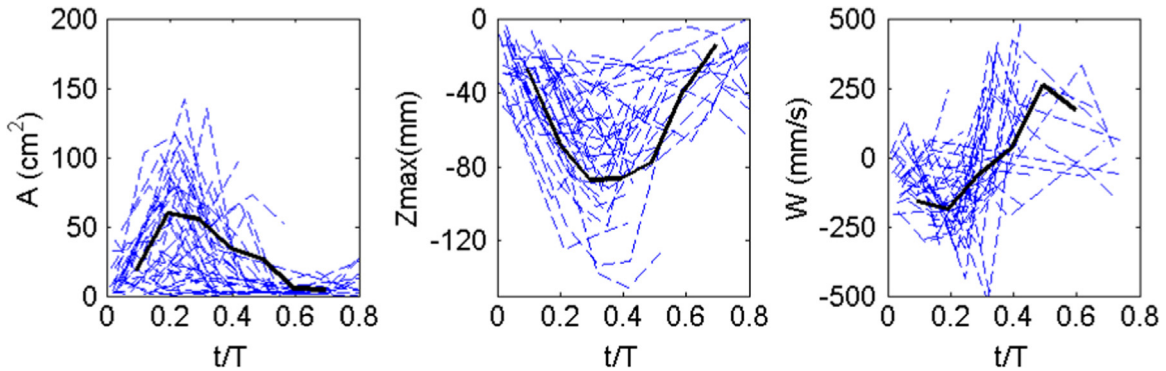
Fig. 10. Bubble clouds properties (area, maximal depth and vertical velocity) in configuration 1: current only. (For interpretation of the references to color in this figure caption, the reader is referred to the web version of this paper.)



**Fig. 11.** Bubble clouds properties (area, maximal depth and vertical velocity) in configuration 2: current and waves. (For interpretation of the references to color in this figure caption, the reader is referred to the web version of this paper.)



**Fig. 12.** Bubble cloud properties (area, maximal depth and vertical velocity) in configuration 3: current and ship motions. (For interpretation of the references to color in this figure caption, the reader is referred to the web version of this paper.)



**Fig. 13.** Bubble cloud properties (area, maximal depth and vertical velocity) in configuration 4: current, waves and motions. (For interpretation of the references to color in this figure caption, the reader is referred to the web version of this paper.)

figures abscissa correspond to the dimensionless time  $t/T$  with  $T$  the wave or motion period  $T = 1/0.85 \approx 1.18$  s.

### 3.1. Configuration 1: current only

In the first configuration (Fig. 10), the instant  $t=0$  corresponds to the first aeration detection for each cloud. All the clouds are caused by air entrainment by vortex shedding. The area of the clouds is always lower than  $0.5 \times 10^4$  mm<sup>2</sup>. The maximal penetration depth of the bubbles is slightly above 50 mm. The vertical velocity of the clouds is on average close to zero during the first half of the cloud life and tends to be positive afterwards, the bubbles rising to the surface.

### 3.2. Configuration 2: waves

In the second configuration (Fig. 11), the instant  $t=0$  corresponds to the crest of the incoming wave at the bow. During this test the great majority of significant clouds are due to breaking waves. In order to characterize this phenomenon, only the breaking wave clouds are selected to calculate the mean value. The inception of bubble clouds visualization happens between 0.1 and 0.3  $T$  after the crest of the wave. The cloud properties are very different from the vortex shedding ones. The cloud areas and depths present a clear peak between 0.3 and 0.5  $T$ . The maximal cloud area is often 3 times higher than that of the vortex shedding one (up to  $1.8 \times 10^4$  mm<sup>2</sup>). The maximal depth penetration reaches 140 mm. Even if this value is significantly higher than the vortex

shedding cloud depth, the breaking wave clouds never pass under the hull (of 182 mm draft). Finally the vertical cloud velocities are close to  $-0.25$  m/s after the breaking events, tend to zero between 0.4 and 0.5 T and increase to a rise velocity of 0.25 m/s between 0.5 and 0.7 T.

These values can be compared to the velocities generated by the waves. Applying the theory of Airy, the orbital velocity in infinite depth approximation is given by:

$$w = A\omega e^{kz} \sin(kx - \omega t) \quad (1)$$

with  $A$  being the amplitude,  $\omega$  the temporal angular frequency and  $k$  the wave number. Thus, the maximum value of the vertical orbital velocity near the free surface is  $w = A\omega = 0.18$  m/s for a 33 mm amplitude regular wave. In this case, the interaction of the incoming wave with the bow increases the vertical component by a factor 1.4, showing the increase of amount of energy at the start-up of clouds formation.

### 3.3. Configuration 3: motions

In the third configuration (Fig. 12), the instant  $t=0$  corresponds to the peak of the pitch (highest position of the bow). In this case, even if the frequency of breaking wave cloud is as important as the vortex shedding cloud frequency, these events are not as energetic as in the configuration with the waves impacting the bow. The significant clouds with current and motions are mostly due to vortex shedding clouds with model movements favouring the air entrainment, as confirmed by the cloud properties close to the first configuration. The variation of the vertical velocities are higher than in the first configuration, probably because of the amplification of the vortex by the model's motions. The maximal cloud area and depth penetration are respectively  $0.8 \times 10^4$  mm<sup>2</sup> and 84 mm. The vertical velocities vary between  $-0.3$  and 0.46 m/s.

### 3.4. Configuration 4: waves and motions

In the fourth configuration (Fig. 13), the instant  $t=0$  corresponds to the crest of the incoming wave at the bow, as in configuration 2. The number of significant clouds is the highest in this case. The properties of the clouds are similar to those in the second configuration, attesting the predominance of breaking wave clouds. The maximal cloud area and depth penetration are also very close (respectively  $1.4 \times 10^4$  mm<sup>2</sup> and 146 mm), while the absolute values of the vertical velocities can be higher (from  $-0.5$  up to 0.5 mm/s).

The mean values for the four configurations are compared on Fig. 14. On these graphs the properties are made dimensionless. The area of the cloud is divided by that of the rectangle defined by the

draft  $D=0.182$  m and the length  $l = 0.2 \cdot L_{pp} = 0.626$  m:  $a = A/(D \cdot l)$ . The maximal depth is divided by the draft,  $z = Z_{max}/D$  and the vertical velocity is divided by the incoming flow mean velocity,  $w=W/U$ . This analysis confirms the description of air entrainment mechanisms posited from direct visualisation in the first part of the paper. Vortex shedding clouds (configuration 1) are relatively small and stay close to the surface, while breaking wave clouds (configurations 2 and 4) may be larger and entrained deeper a few instants after the crest of the incoming wave. The main difference between configurations 2 and 4 is that the breaking event is generated sooner in the wave period in the fourth configuration, by the impact between the wave and the bow motion.

## 4. Parametric study of the occurrence of bubble clouds

Section 3 has allowed to characterize the two kinds of bubble clouds generated in the circulating tank. The influence of the interaction of an incoming turbulent flow on the bow of the *Pourquoi pas?*, of the waves and finally the motions, are obtained through the four base configurations. In this section, the various parameters of these tests are modified in order to understand the influence of each of them on the bubble clouds occurrence.

### 4.1. Influence of the waves characteristics

As explained in the first section, the impact of the waves on the bow generates breaking wave clouds, which are most likely to be entrained deeply and disturb acoustic signals. Waves are consequently the most important parameter. However, they are also difficult to control because of the interaction of the current and the wavemaker. The fluctuations of the wave amplitudes are significant (Fig. 15).

The wave signal from the second configuration with waves has been analysed to sort the waves according to their height. Fig. 16 shows the evolution of the clouds' depth for three wave height levels. The graph on the left corresponds to the significant bubble clouds observed for the highest third of waves ( $45 \text{ (mm)} < A$ ). In the center and on the right stand the equivalent graphs for the intermediate-amplitude third ( $35 < A < 45$ ) and the lower-amplitude third ( $A < 35$ ), respectively. As we can see, the bubble generation is directly related to the wave amplitude, with a greatest number of bubble clouds on the left-most graph. This analysis also shows that the influence of the wave amplitude on bubble clouds frequency should not be studied directly from the mean clouds frequency of several amplitude input tests alone.

For this purpose all the tests with current and waves (configurations 2 and 5–9) have been analysed as an independent

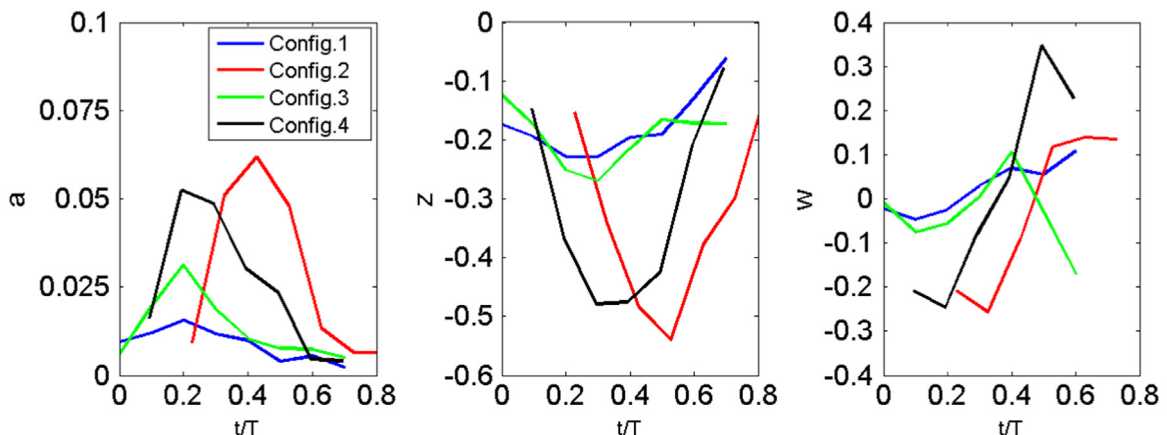


Fig. 14. Comparison of the dimensionless bubble cloud properties for the four configurations.

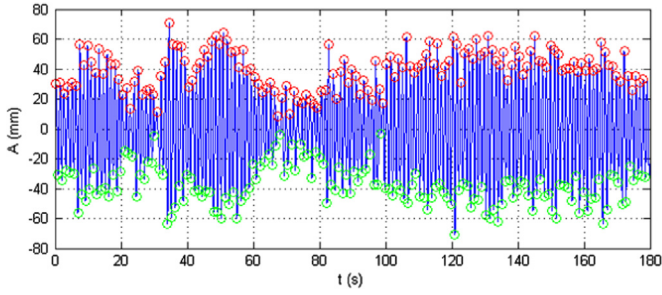


Fig. 15. Fluctuation of the wave amplitude. Signal recorded by the wave gauge 1 m upstream from the bow.

database. All wave signals have been divided by groups of wave height, every 10 mm. The bubble clouds frequency is calculated for each group as can be seen in Fig. 17 (left). This result confirms that the clouds frequency in the configuration with waves and current increases linearly with increasing wave height, with a coefficient of determination  $R^2 = 0.91$ .

Graph 17 (right) corresponds to the analysis of configurations 2 and 10–12 with wave frequencies of respectively 0.85, 0.65, 0.75 and 1.00 Hz. For all these tests, only the bubble clouds generated by waves corresponding to the desired test conditions (wave height = 66 mm plus or minus 5 mm) were considered. The cloud frequency reaches a maximum between wave frequencies of 0.75 and 0.85 Hz and decreases until 0.3 Hz for a wave frequency of 1.00 Hz. For such frequency, the wavelength becomes too short, the impact on the bow is smoother and the amount of breaking event is reduced.

#### 4.2. Influence of ship dynamics

Another main parameter is the current's velocity. The four base configurations have been repeated for currents corresponding to 4, 6 and 8 knots (respectively 0.38, 0.56 and 0.75 m/s in the tank at a 1/30 scale). As we can see in Fig. 18, the bubble cloud frequency is notably lower at 6 knots ( $f = 0.22$  Hz with waves and motions) and minimal at 4 knots ( $f = 0.06$  Hz). For these velocities the waves do not generate more bubble clouds than the motions.

The influence of the motions amplitude and frequency is shown in Fig. 19. The left-most graph corresponds to the analysis of configurations 3 and 13 to 15 with respectively a motion amplitude coefficient of 0.75, 1, 1.25 and 1.50. For each case the frequency of vortex shedding clouds is similar, close to 0.2 Hz. Conversely the frequency of breaking wave clouds strongly increases with motion amplitude. The right hand side graph corresponds to the analysis of configurations 3 and 16 to 18 with respectively motion frequencies of 0.65, 0.75, 0.85 and 1.00 Hz. As for the effect

of the wave frequency, the cloud frequency increases and seems to reach a maximum between 0.85 and 1.00 Hz.

#### 4.3. Influence of the synchronism

An important issue in the setup of base configuration 4 was to synchronize the model's motions with the waves. The phase was controlled by a variation of the delay between the start of the wavemaker and that of the hexapod. This delay corresponds to the time necessary for the first wave to travel from the wavemaker to the model. The numerical simulations showed that the heave and the wave at the center of gravity were in phase.

The influence of this parameter is shown in Fig. 20, corresponding to configurations 27 to 30 (with a mean phase shift, between the heave and the wave at the center of gravity, of  $-90^\circ$ ,  $-5^\circ$ ,  $5^\circ$  and  $30^\circ$ , respectively). A phase shift of  $5^\circ$  is not significant in the bubble clouds frequency. Nonetheless the two other cases demonstrate that this variable is a key parameter. For the phase shift of  $-90^\circ$ , the incoming waves simply follow the movements of the bow, and the impact is reduced or non-existent. In this case the bubble clouds frequency is reduced to  $f = 0.25$  Hz. Conversely for the phase shift of  $30^\circ$ , the bow exactly impacts the incoming wave, resulting in a breaking wave and bubble generation on almost every period ( $f = 0.84$  Hz). This phase shift is representative of real conditions: even if the ship's motions at sea directly respond to the most energetic waves, irregular waves may impact the bow and be a source of significant bubble clouds.

### 5. Discussions

As mentioned throughout this article, the incoming turbulent flow generates a distortion of the flow in the vicinity of the bow, and the development of an air cavity leading to the air entrapment by vortex shedding. To the authors' knowledge, this phenomenon has not been described from classic towing tank tests. One of the main differences between these tests and ours is that the presence of the wavemaker in the circulating tank generates a very turbulent flow. The influence of this parameter is shown in Table 2, which corresponds to test runs 1, 3, 31 and 32. In runs 31 and 32, the wavemaker is removed so the turbulent intensity of the flow (classically defined in Part I in Delacroix et al., 2014) is  $TI = 3\%$ , closest to towing tank test classic set ups.

In the case with current only and  $TI = 3\%$ , there is no generation of bubbles. The phenomenon of air entrainment by vortex shedding disappears, which confirms the influence of the flow turbulence on this phenomenon. In the configuration with motions, the cloud frequency is also very low ( $f = 0.06$  Hz). On the contrary, when the turbulent intensity is closest to real ocean conditions ( $TI = 15\%$ ) the cloud frequencies are 0.18 Hz and 0.40 Hz for

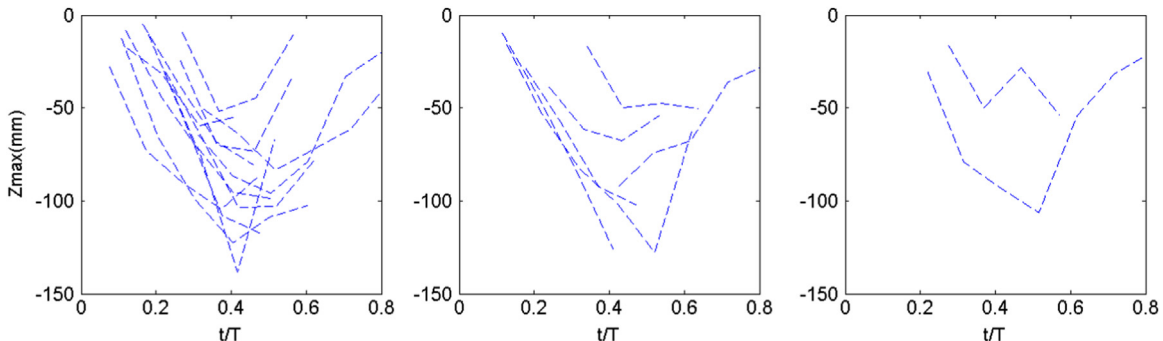
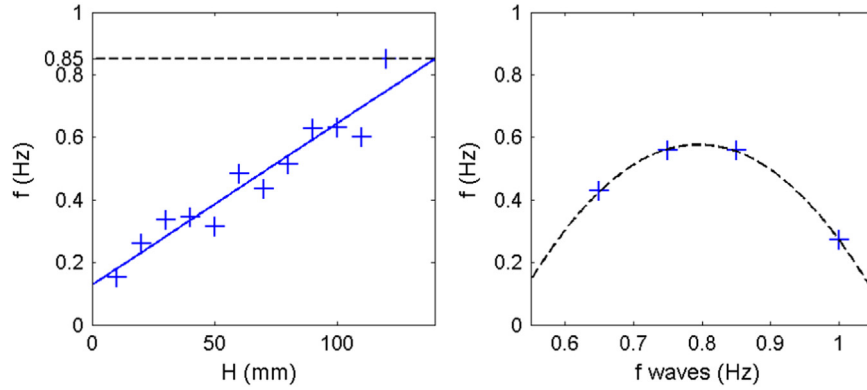
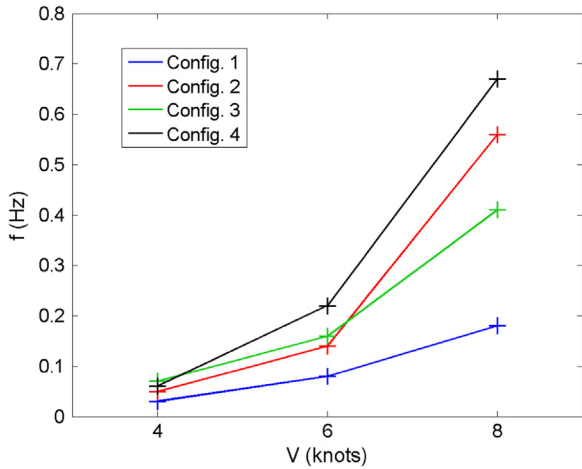


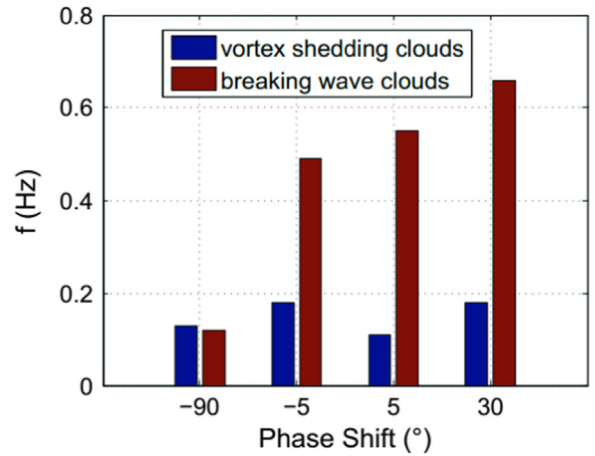
Fig. 16. Maximal depth evolution of the significant clouds of the second configuration. Left: for the third of the highest wave amplitude. Center: for the third of intermediate wave amplitude. Right: for the third of the lowest wave amplitude.



**Fig. 17.** Influence of the wave parameters on the bubble cloud frequency. Left: cloud frequency against wave height, and linear regression ( $R^2 = 0.91$ ). Right: cloud frequency against wave frequency, and quadratic regression ( $R^2 = 0.99$ ).



**Fig. 18.** Influence of the velocity on the bubble cloud frequency.



**Fig. 20.** Influence of the phase shift on the bubble cloud frequency.

configurations 1 and 3, respectively.

The fact that the wavemaker generates uncontrolled turbulence in the tank should be taken into account. The influence on bubble generation of a homogeneous isotropic turbulence could be different, even if the vortex shedding phenomenon is due to local variations in the flow.

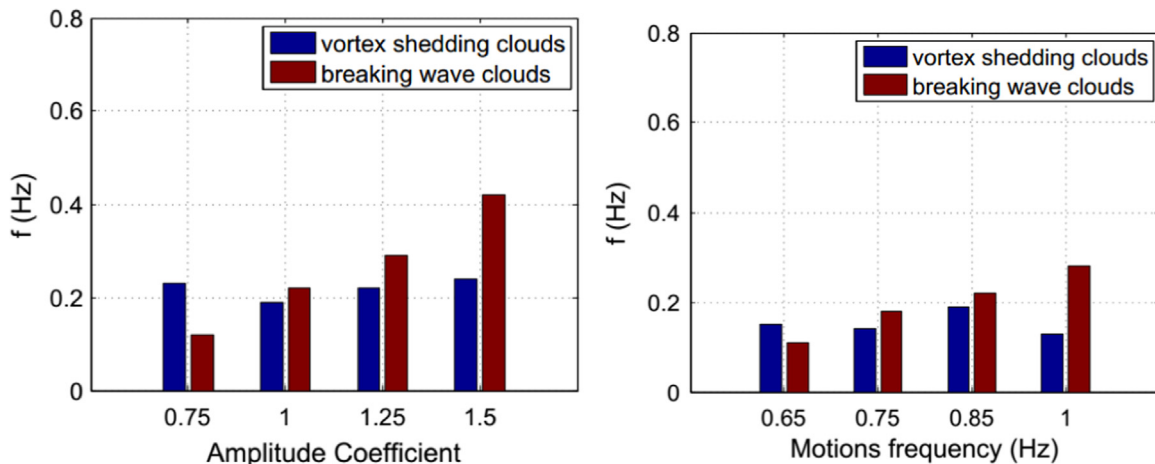
The second item of discussion is related to similarity issues and results in the inability of direct extrapolation at real scale of the parameters' influence described above on the bubble cloud frequency. For instance, experiments from sea campaigns show that

**Table 2**

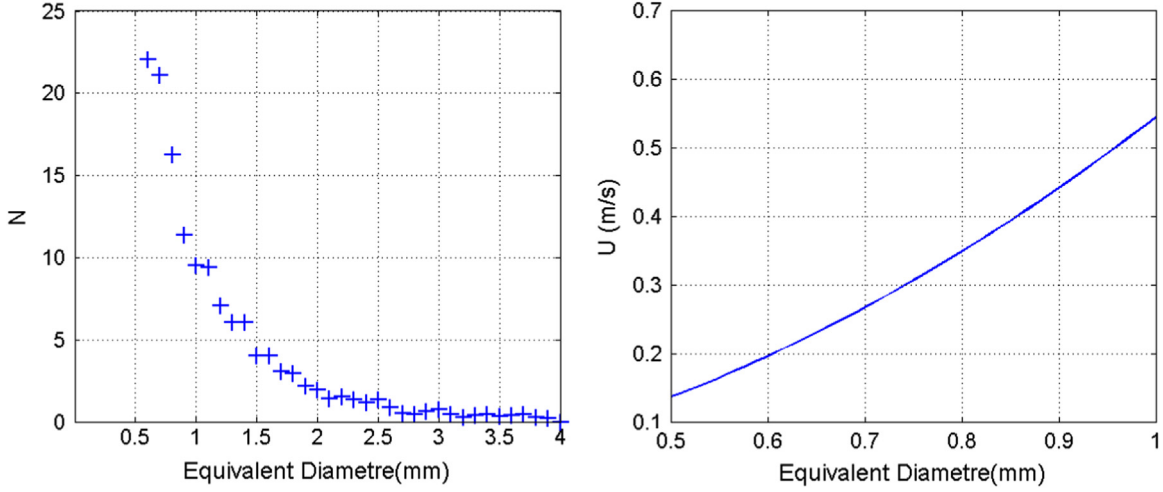
Influence of the turbulence on the bubble cloud frequency.

Tl (%)	Config. 1 (Hz)	Config. 2 (Hz)
3	0	0.18
15	0.06	0.40

the influence of the ship's velocity on bubble sweep-down is not as significant as observed in Section 4.2. It was observed in Section 3.2 that bubbles never pass under the model's hull. This is mostly



**Fig. 19.** Influence of the motion parameters on the bubble cloud frequency. Left: motion amplitude coefficient. Right: motion frequency.



**Fig. 21.** Left: Size distribution of the aerations detected for each image of the second configuration, with current and waves. Right: Theoretical bubble rise velocity.

due to scale effects and the size of the bubbles in the tank, while the microscopic bubbles generated at sea may be dragged deeper. The size distribution of aerations detected by the image post-processing method is given in Fig. 21 (left). In this graph the size distribution of bubbles (equivalent diameter) per 0.1 mm intervals is calculated by averaging all the images for which more than 10 bubbles are detected, from configuration 2 with current and waves. The number of detections is maximum for a 0.6 mm equivalent diameter, which is the detection minimum limit, and decreases dramatically to be very low above 2 mm. There is no detection for an equivalent diameter greater than 4 mm. These measurements are consistent with the rise velocity of bubble clouds observed. On the right-most, the final rise velocity of a single isolated and spherical bubble has been calculated according to the expression given by Comolet (1979), well fitted for bubble diameter  $d < 1$  mm:

$$u_{\infty} = \frac{g \cdot \rho_w}{18 \cdot \mu_w} d_e^2 \quad (2)$$

where  $g$  is the acceleration due to gravity,  $d_e$  the equivalent bubble diameter,  $\rho_w$  the density of water and  $\mu_w$  the dynamic viscosity of water.

The maximal rise velocity of a bubble cloud generated by breaking waves (Section 3.2) is near 0.25 m/s, corresponding to the rise velocity of a bubble of diameter  $d=0.67$  mm close to the typical size of the observed bubbles.

Due to the Weber scale effects and because no correction was adopted for cross sectional influence, this bubble size distribution should be considered as indicative only. However, the mechanisms of air entrainment described in this article are similar to real sea events, even if the quantity of air entrained and the size distribution of bubbles (and consequently the rise velocity) are not.

## 6. Conclusions and perspectives

The long term goal of this project is to develop a tool usable by research vessel designers, that would predict ship's behaviour in terms of bubble sweep-down. Through the two parts of this article, an experimental method developed in order to achieve this goal has been described. Several points have been highlighted:

- The wave and current flume tank is well-suited to reproduce the conditions of bubble sweep-down encountered at sea on a 1/30 model of the *Pourquoi pas?*;

- The use of a hexapod to independently generate the model's motions allows to work on the model bow only, and facilitate the parametric study of the phenomenon;
- The acquisition of high quality underwater images is facilitated in this configuration.

A method for image post-processing has been developed and used to characterize the bubble generation. Two phenomena have been described: air entrainment by vortex shedding or by breaking waves. A parametric study via a large number of experimental configurations has shown the influence of the main parameters:

- Vortex shedding clouds only exist in the tank with a high turbulent flow due to the wavemaker's presence upstream. The turbulent flow is favourable to bubble generation, and is the reason why bubble clouds are observed in the circulation tank but not in the towing tank for similar navigation conditions.
- The waves are a determining factor on bubble generation and the clouds' frequency is directly proportional to the wave height.
- The considerable influence of the current's speed and the phase shift between waves and motions have also been demonstrated.

All these results have contributed to understanding the various physical mechanisms of bubble generation in a circulating tank with a model attached under a hexapod, and at sea despite the similarity issues discussed above. These tests have allowed the visualization and analysis of bubble generation around the bow of a model submitted to waves and motions. The database thus obtained is, to the authors' knowledge, unique and the properties calculated for the four configurations (area, depth and velocity of the clouds) could be used as a reference for the development of numerical models.

The other great advantage of these experiments is that the acquisition system also enable us to obtain a PIV database, leading to velocity fields (Dussol et al., 2016). Simultaneous analysis of bubble generation and of the flow around the bow can thereby be conducted. These measurements could be used to characterize the turbulent structures, and the hydrodynamic events that lead to air entrainment mechanisms. These analyses should give more details on these mechanisms and should be used for the study and the prevention of bubble sweep down.

## Acknowledgement

The authors gratefully acknowledge the DGA (the French Government Agency for Defense) and Ifremer for the financial support of this co-financed Ph.D. thesis.

We also would like to thank Thomas Bacchetti and Jean-Valéry Faqç for their assistance in the design and set-up of these experiments, and Alcino Ferreira for the proof-reading of the final paper.

## References

- Blenkinsopp, C.E., Chaplin, J.R., 2007. Void fraction measurements in breaking waves. *Proc. R. Soc. A* 463, 3151–3170.
- Bonmarin, P., 1989. Geometric properties of deep-water breaking waves. *J. Fluid Mech.* 209, 405–433.
- Carrica, P.M., Drew, D., Bonetto, F., Lahey Jr, R.T., 1999. A polydisperse model for bubbly two-phase flow around a surface ship. *Int. J. Multiphase Flow* 25, 257–305.
- Chanson, H., Summings, P.D., 1994. Effects of plunging breakers on the gas contents in the oceans. *Mar. Technol. Soc. J.* 28, 22–32.
- Cummings, P.D., Chanson, H., 1997. Air entrainment in the developing flow region of plunging jet. Part 2: experimental. *J. Fluids Eng.* 119, 603–608.
- Cointe, R., Tulin, M.P., 1994. A theory of steady breakers. *J. Fluid Mech.* 276, 1–20.
- Comolet, R., 1979. Sur le mouvement d'une bulle de gaz dans un liquide (Gas bubble motion in a liquid medium). *La Houille Blanche* 1, 31–42 (in French).
- Dabiri, D., Gharib, M., 1997. Experimental investigation of the vorticity generation within a spilling water wave. *J. Fluid Mech.* 330, 113–139.
- Dantec Dynamic A/S, 2010. *DynamicStudio User's Guide*.
- Deane, G.B., Stokes, M.D., 2002. Scale dependence of bubble creation mechanisms in breaking waves. *Nature* 418, 839–844.
- Delacroix, S., 2015. Caractérisation de la génération et de la propagation de bulles autour de la carène de navires scientifiques (Ph.D. thesis), Université de Bretagne Occidentale.
- Delacroix, S., Germain, G., Gaurier, B., Billard, J.Y., 2014. Experimental study of bubble sweep-down in wave and current circulation tank, Part I. Experimental set-up, *Ocean Eng. Under corrections*.
- Delacroix, S., Germain, G., Berger, L., Billard, J.Y., 2016. Bubble sweep-down occurrence characterization on research vessels. *Ocean Eng.* 111, 34–42.
- Delhommeau, G., Guilbaud, M., David, L., Yang, C., Noblesse, F., 2009. Boundary between unsteady and overturning ship bow wave regimes. *J. Fluid Mech.* 620, 167–175.
- Dussol, D., Druault, P., Mallat, B., Delacroix, S., Germain, G., 2016. Automatic dynamic mask extraction for PIV images containing an unsteady interface, bubbles and a moving structure. *C. R. Méc.*, In Press.
- Dussol, D., 2015. Etude de l'écoulement autour de l'étrave des navires océanographiques (in French) (Master's thesis), Université Pierre et Marie Curie-Paris 6.
- Duncan, J.H., 1981. An experimental investigation of breaking waves produced by a towed hydrofoil. *Proc. R. Soc. A* 377, 331–348.
- Duncan, J.H., 1983. The breaking and non-breaking wave resistance of a two-dimensional hydrofoil. *J. Fluid Mech.* 126, 507–520.
- Kiger, K.T., Duncan, J.H., 2012. Air-entrainment mechanisms in plunging jets and breaking waves. *Annu. Rev. Fluid Mech.* 44, 563–596.
- Lamarre, E., Melville, W.K., 1994. Void-fraction measurements and sound-speed fields in bubble plumes generated by breaking waves. *J. Acoust. Soc. Am.* 95, 1317–1328.
- Lin, J.C., Rockwell, D., 1995. Evolution of a quasi-steady breaking wave. *J. Fluid Mech.* 302, 29–44.
- Loewen, M.R., O'Dor, M.A., Skafel, M.G., 1996. Bubbles entrained by mechanically generated breaking waves. *J. Geophys. Res.* 101, 759–769.
- Ma, J., Oberai, A.A., Hyman, M.C., Drew, D.A., Lahey Jr, R.T., 2011. Two-fluid modeling of bubbly flows around surface ships using a phenomenological subgrid air entrainment model. *Comput. Fluids* 52, 50–57.
- Moraga, F.J., Carrica, P.M., Drew, D.A., Lahey Jr, R.T., 2008. Air entrainment model for breaking bow waves and naval surface ships. *Comput. Fluids* 37, 281–298.
- Noblesse, F., Delhommeau, G., Guilbaud, M., Hendrix, D., Yang, C., 2008. Simple analytical relations for ship bow waves. *J. Fluid Mech.* 600, 105–132.
- Noblesse, F., Delhommeau, G., Guilbaud, M., Liu, H., Wan, D., Yang, C., 2013. Ship bow waves. *J. Hydrodyn.* 25, 491–501.
- Prewitt, J., 1970. *Object Enhancement and Extraction*. Academic Press, New York.
- Shakeri, M., Tavakolinejad, M., Duncan, J.H., 2009. An experimental investigation of divergent bow waves simulated by a two-dimensional plus temporal wave marker technique. *J. Fluid Mech.* 634, 217–243.
- Tavakolinejad, M., 2010. Air bubble entrainment by breaking bow waves simulated by a 2D+T technique (Ph.D. thesis), University of Maryland.
- Waniewski, T.A., Brennen, C.E., Raichlen, F., 2001. Measurements of air entrainment by bow waves. *J. Fluids Eng.* 123, 57–63.