



**HAL**  
open science

## Long-term consequences on T-cell lymphopoiesis of Hodgkin lymphoma therapy

Isabelle Pellier, Gilles Renier, Josué Rakotonjanahary, Marie Audrain, Elsa Berardi, Martine Gardembas, Aline Clavert, Marie Moles, Stéphanie Proust-Houdemont, Yves Reguerre, et al.

► **To cite this version:**

Isabelle Pellier, Gilles Renier, Josué Rakotonjanahary, Marie Audrain, Elsa Berardi, et al.. Long-term consequences on T-cell lymphopoiesis of Hodgkin lymphoma therapy. *Journal of Allergy and Clinical Immunology*, 2015, 135 (3), pp.818 - 820.e4. 10.1016/j.jaci.2014.08.048 . hal-01392232

**HAL Id: hal-01392232**

**<https://hal.science/hal-01392232>**

Submitted on 2 Nov 2021

**HAL** is a multi-disciplinary open access archive for the deposit and dissemination of scientific research documents, whether they are published or not. The documents may come from teaching and research institutions in France or abroad, or from public or private research centers.

L'archive ouverte pluridisciplinaire **HAL**, est destinée au dépôt et à la diffusion de documents scientifiques de niveau recherche, publiés ou non, émanant des établissements d'enseignement et de recherche français ou étrangers, des laboratoires publics ou privés.

## LONG TERM CONSEQUENCES ON T CELL LYMPHOPOIESIS OF HODGKIN'S LYMPHOMA THERAPY

Isabelle Pellier, MD, PhDa-e; Gilles Renier, MD, PhDa,f\*, Josué Rakotonjanahary, MPH, MScg\*, Marie Audrain, PharmD, PhDh, Elsa Berardi, MSc, Martine Gardembas, MDi, Aline Clavert, MDi, Marie Pierre Moles, MDi, Stéphanie Proust-Houdemont, MDa, Yves Reguerre, MDa, Emilie De Carli, MDa, Martine Medge, MDj, Erwan Garoc-e, Simon Blanchardc-f, Charline Miot, PhDa,c-e, Capucine Picard, MD, PhDk-o, Yves Delneste, PhDc-f, Alain Fischer, MD, PhDm-o, Aline Tanguy-Schmidt, MDc-e,i\*\*, Pascale Jeannin, PharmD, PhDc-f\*\*

**Summary:** This is the first study to provide evidence of the durable impact of Hodgkin lymphoma treatment on naive central and thymic CD4<sup>+</sup> T cells associated with immune-senescence, possibly affecting patients' vulnerability as they age.

### To the Editor:

Hodgkin lymphoma (HL) is a hematologic malignancy of the lymphoid tissue that mainly affects young adults<sup>1</sup>. Standard treatment for sub diaphragmatic stages I and II combines chemotherapy regimen followed by dose-reduced involved-field irradiation (including mediastinum). Adverse effects of treatment include early death, second neoplasm and organ dysfunction.<sup>1</sup> Nevertheless, the consequences of HL treatments on thymus involution remained poorly investigated. In this study, we investigated the long-term effects of thymic irradiation on the establishment and maintenance of the naive T-cell compartment and on the distribution of peripheral blood lymphocyte populations in 30 HL patients, 7 to 19 years after mediastinal radiotherapy (all in complete remission of Hodgkin's disease), compared to 60 age- and sex-matched healthy controls (HC), (summarized in Table E1 in this article's Online Repository at [www.jacionline.org](http://www.jacionline.org)). Lymphocyte distribution was analyzed by FACS and thymic output was determined by measuring (i) T cell receptor excision circles (TRECs) and (ii) the frequency of naive CD4<sup>+</sup> CD31<sup>+</sup> thymic CD4<sup>+</sup> T cells, which have higher TREC levels than naive CD4<sup>+</sup> CD31<sup>-</sup> central T cells.<sup>2, 3</sup> (Methods section in this article's Online Repository at [www.jacionline.org](http://www.jacionline.org)).

Results reported in Figure 1A and Table I showed that the CD3<sup>+</sup> and CD3<sup>+</sup> TCRαβ<sup>+</sup> T cell counts were significantly reduced in HL patients compared to matched HC (p=0.02 and p=0.01, respectively) while the total lymphocyte counts were similar in both populations. The CD4<sup>+</sup> T cell counts were dramatically lower in HL patients than in HC (p<0.001; mean decrease of 32%); in contrast, the CD8<sup>+</sup> T cell counts were equivalent in both groups. HL patients exhibited (i) an increase in B cell counts (p=0.01), with an unaffected frequency of memory B cells, indicating an increase in naive B cells counts and, (ii) a marginal increase of NK cell frequency (p=0.04).

We next evaluated the long-term impact of treatments on CD4<sup>+</sup> T cell homeostasis and thymic activity in HL patients. Compared to HC, HL patients exhibited a profound decrease in naive CD4<sup>+</sup> CD45RA<sup>+</sup> T cell numbers ( $p < 0.001$ ; mean decrease of 57%) while the numbers of memory CD4<sup>+</sup> CD45RO<sup>+</sup> T cells were equivalent in both groups ( $p = 0.21$ ) (Fig 1A and Table I). We also observed a significant increase in the frequency of CD4<sup>+</sup> CD28<sup>-</sup> T cells ( $p = 0.02$ ) in HL patients compared to HC (Table I), indicative of a chronic T cell activation.<sup>4, 5</sup> Seven to nineteen years post-treatment, HL patients have lower absolute numbers of naive CD4<sup>+</sup> CD31<sup>+</sup> T cells ( $p < 0.001$ ; mean decrease of 59%) (Fig 1A and Table I; see Table E2, in this article's Online Repository at [www.jacionline.org](http://www.jacionline.org)). Accordingly, TREC levels in peripheral leukocytes were lower in HL patients than in HC ( $p < 0.001$ ) (Fig 1B and Table 1; see Table E2); 18/30 patients had undetectable levels of TRECs ( $< 100$  TRECs/ $10^6$  WBC), compared to 5/60 in matched HC (Fig 1B). During aging, the decrease of naive CD4<sup>+</sup> CD31<sup>+</sup> T cells correlates with the decline of TRECs.<sup>2, 6</sup> Naive CD31<sup>+</sup> T cells (Fig 1C) and TRECs levels (Fig 1D) became lower in HL patients earlier in life than in HC; TRECs were undetectable in 48 years-old HL patients but still detectable in HC at 70 years old and beyond (Fig 1D). Association between naive CD31<sup>+</sup> T cells (Fig 1C) or TRECs levels (Fig 1D), as dependent variables, and age at analysis (22-72 years), revealed that the age-dependent decline in naive CD31<sup>+</sup> T cells and TRECs was equivalent in both populations. Although the absolute number of naive CD31<sup>+</sup> thymic T cells decreases with aging, the absolute number of naive T cells remains stable in the young and the elderly<sup>7</sup>, a result of a compensatory proliferation of peripheral naive CD31<sup>-</sup> central T cells<sup>8</sup>. Naive CD4<sup>+</sup> CD31<sup>-</sup> T cell counts were dramatically lower in HL patients than in HC ( $p < 0.001$ ), whereas the CD31<sup>+</sup>/CD31<sup>-</sup> T cell ratio was not affected in HL patients ( $p = 0.27$ ) (Table I). According to the age, the naive CD4<sup>+</sup> CD31<sup>-</sup> T cell counts remained relatively stable in HL patients and, as expected,<sup>7</sup> in HC (see Fig E1, in this article's Online Repository at [www.jacionline.org](http://www.jacionline.org)).

Finally, we evaluated the impact of doses, time since radiotherapy, age at the treatment, modalities of chemotherapy and disease stage, on the naive CD31<sup>+</sup> thymic T cell numbers and TRECs levels. Results showed a more pronounced decrease in thymic output in HL patients receiving radiation doses of 40 Gy than in patients receiving a dose  $< 40$  Gy ( $p = 0.044$  for naive CD4<sup>+</sup> CD31<sup>+</sup> T cells;  $p = 0.004$  for TRECs levels) (Fig 1E-F). Patients treated at older ages have a more pronounced decrease in TRECs levels than patients treated younger (in univariate ( $p = 0.002$ ) and multivariate analysis – see Table E2) and most of the patients treated after 34 years of age had undetectable TRECs levels (see fig E2, in this article's Online Repository at [www.jacionline.org](http://www.jacionline.org)). The cut-off value for age at treatment associated with a lower number of naive CD31<sup>+</sup> T cells was explored using ROC analysis of sensitivity and specificity at different cut-off values. The number of CD31<sup>+</sup> naive T cells was lower in patients treated beyond the age of 34 years than in patients treated younger (area under the ROC curve = 0.73). Although TRECs levels were slightly lower in HL patients treated with ABVD than with other chemotherapies ( $p = 0.007$ ), naive CD31<sup>+</sup> T cell number was not dependent on the type of chemotherapy ( $p = 0.33$ ) (see fig E2). Finally, multivariate analysis showed that male patients had a

more pronounced decrease in naive CD4<sup>+</sup> CD31<sup>+</sup> T cells than female patients (p=0.007) (See Table E2). No association was observed between the decrease in thymic output and time since radiotherapy and the stage of HL.

Here we thus show that, long after treatment, HL patients exhibit a persistent and dramatic alteration of CD4<sup>+</sup> T cell homeostasis and a profound alteration of thymic function evidenced by a decrease in central, thymic naive T cells and TRECs, while memory CD4 T cell counts remained unaffected. We report that signs of immune senescence (decrease in naive T cells and TRECs and increase in CD28<sup>-</sup> CD4<sup>+</sup> T cells) occur earlier in HL patients than in healthy subjects. High doses of radiotherapy and treatment beyond the age of 34 years exacerbated the reduction in thymic output.

In conclusion, the age-dependent thymic involution is protracted in these patients, a setting that suggests a premature loss of thymic function. These results suggest that, with aging, patients may become more vulnerable to infections and aging-associated immune disorders.

The authors thank Mrs Marie-Line Loiry, Sophie Chaudet, Anne Huet and Catherine Daniel for expert technical assistance, Dr Stephane Supiot for advice on radiotherapy, Joanne Walker for advice in english language and Pr Norbert Ifrah for advice on Hodgkin lymphoma. We thank all the patients and volunteers healthy subjects who willingly took part in this study.

*Isabelle Pellier, MD, PhD<sup>a,e</sup>*

*Gilles Renier, MD, PhD<sup>a,f,\*</sup>*

*Josué Rakotonjanahary, MPH, MSc<sup>a,g,\*</sup>*

*Marie Audrain, PharmD, PhD<sup>b,h</sup>*

*Elsa Berardi, MSc<sup>a</sup>*

*Martine Gardembas, MD<sup>i</sup>*

*Aline Clavert, MD<sup>i</sup>*

*Marie Pierre Moles, MD<sup>i</sup>*

*Stéphanie Proust-Houdemont, MD<sup>a</sup>*

*Yves Reguerre, MD<sup>a</sup>*

*Emilie De Carli, MD<sup>a</sup>*

*Martine Medge, MD<sup>j</sup>*

*Erwan Garo<sup>c-e</sup>*

*Charline Miot, PhD<sup>a,c-e</sup>*

*Capucine Picard, MD, PhD<sup>b,k-o</sup>*

*Yves Delneste, PhD<sup>c-f</sup>*

*Alain Fischer, MD, PhD<sup>b,m-o</sup>*

*Aline Tanguy-Schmidt, MD<sup>c-e,i,\*\*</sup>*

*Pascale Jeannin, PharmD, PhD<sup>c-f,\*\*</sup>*

From the <sup>a</sup>Unité d’Onco-hémato-immunologie Pédiatrique, CHU Angers, Angers, France, <sup>b</sup>the Centre de Référence Déficits Immunitaires Hérités, AP-HP, France, <sup>c</sup>the Inserm UMR 892, Angers, France, <sup>d</sup>the CNRS UMR 6299, Angers, France, <sup>e</sup>the Université d’Angers, Angers, France, <sup>f</sup>the CHU d’Angers, Laboratoire d’Immunologie et d’Allergologie, Angers, France, <sup>g</sup>the Inserm, Centre d’Investigation Clinique et Epidémiologique 5, Hôpital Robert Debré, Paris, France, <sup>h</sup>The Laboratoire d’immunologie, CHU Nantes, Nantes, France, <sup>i</sup>the Département d’Hématologie, Service des maladies du sang, CHU Angers, Angers, France, <sup>j</sup>the Département d’oncologie radiothérapie, Institut de cancérologie de l’Ouest Paul Papin, Angers, France, <sup>k</sup>the Centre d’Etude des Déficits Immunitaires, Hôpital Universitaire Necker-Enfants Malades, AP-HP, Paris, France, <sup>l</sup>The Laboratoire de Génétique Humaine des Maladies Infectieuses, Inserm, UMR 980, Paris, France, <sup>m</sup>the Université Paris Descartes, Institut Imagine, Sorbonne Paris Cité Paris, France, <sup>n</sup>the Unité d’immunologie et d’hématologie pédiatrique, Hôpital Necker-Enfants Malades, Paris, France, and <sup>o</sup>the Inserm UMR 768, Paris, France.  
E-mail: pascalle.jeanninuniv-angers.fr

\* These authors contributed equally to this work.

\*\* These authors supervised equally this work.

Supported by an institutional grant from the Angers University Hospital and by a funding from the association “Les sapins de l’espoir”.

Disclosure of potential conflict of interest. The authors declare that they have no competing financial interests

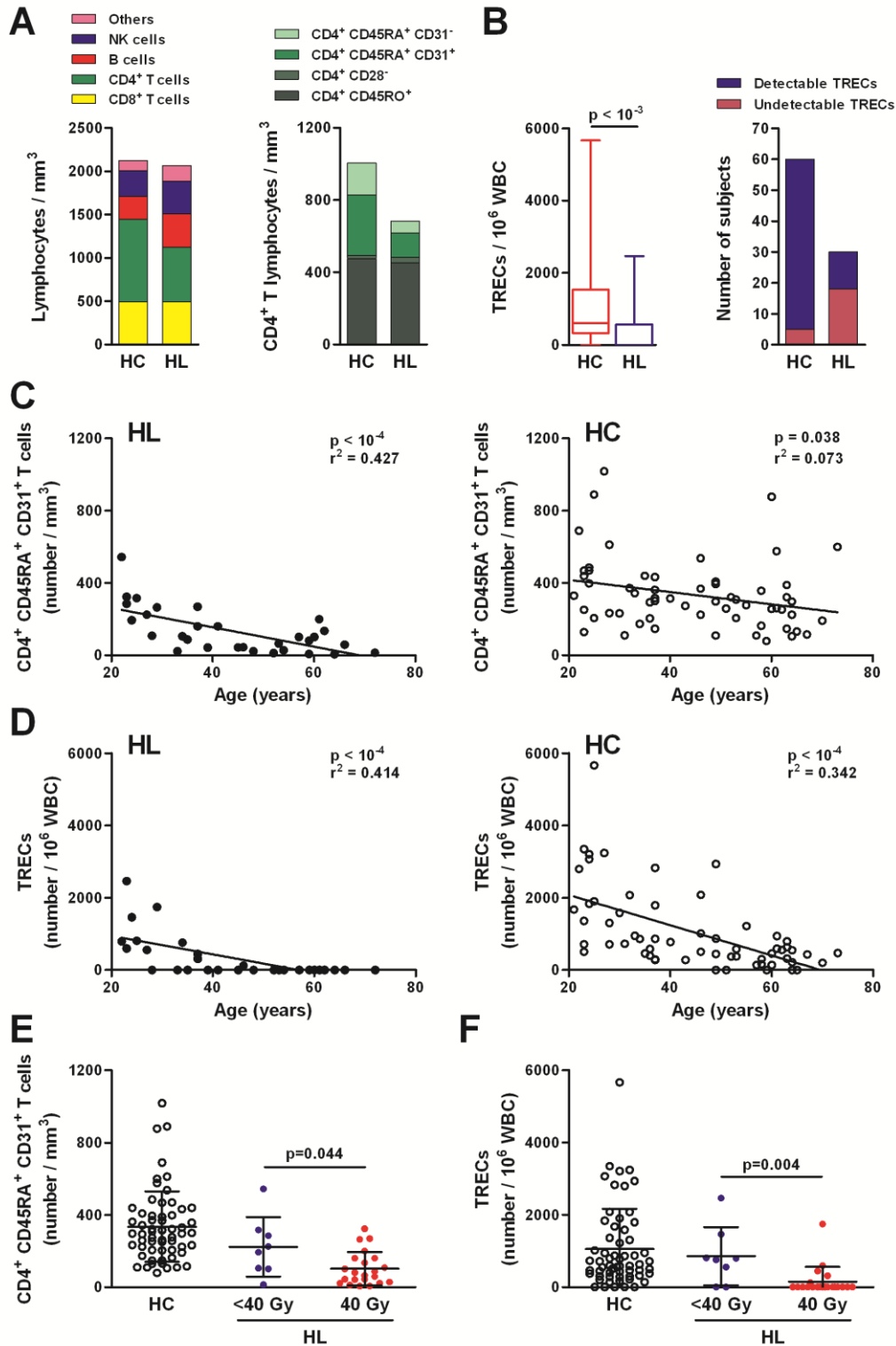
## REFERENCES

1. Bhatia S, Meadows AT. Long-term follow-up of childhood cancer survivors: future directions for clinical care and research. *Pediatr Blood Cancer* 2006; 46:143-8.
2. Kimmig S, Przybylski GK, Schmidt CA, Laurisch K, Mowes B, Radbruch A, et al. Two subsets of naive T helper cells with distinct T cell receptor excision circle content in human adult peripheral blood. *J Exp Med* 2002; 195:789-94.
3. Kohler S, Thiel A. Life after the thymus: CD31+ and CD31- human naive CD4+ T-cell subsets. *Blood* 2009; 113:769-74.
4. Thewissen M, Somers V, Hellings N, Fraussen J, Damoiseaux J, Stinissen P. CD4+CD28null T cells in autoimmune disease: pathogenic features and decreased susceptibility to immunoregulation. *J Immunol* 2007; 179:6514-23.

5. Parish ST, Wu JE, Effros RB. Sustained CD28 expression delays multiple features of replicative senescence in human CD8 T lymphocytes. *Journal of clinical immunology* 2010; 30:798-805.
6. den Braber I, Mugwagwa T, Vrisekoop N, Westera L, Mogling R, de Boer AB, et al. Maintenance of peripheral naive T cells is sustained by thymus output in mice but not humans. *Immunity* 2012; 36:288-97.
7. Kilpatrick RD, Rickabaugh T, Hultin LE, Hultin P, Hausner MA, Detels R, et al. Homeostasis of the naive CD4+ T cell compartment during aging. *J Immunol* 2008; 180:1499-507.
8. Mitchell WA, Lang PO, Aspinall R. Tracing thymic output in older individuals. *Clin Exp Immunol* 2010; 161:497-503.

Key words: naive T cells, thymopoiesis, radiotherapy, Hodgkin lymphoma, immune senescence, TRECs, homeostasis.

# FIGURE 1



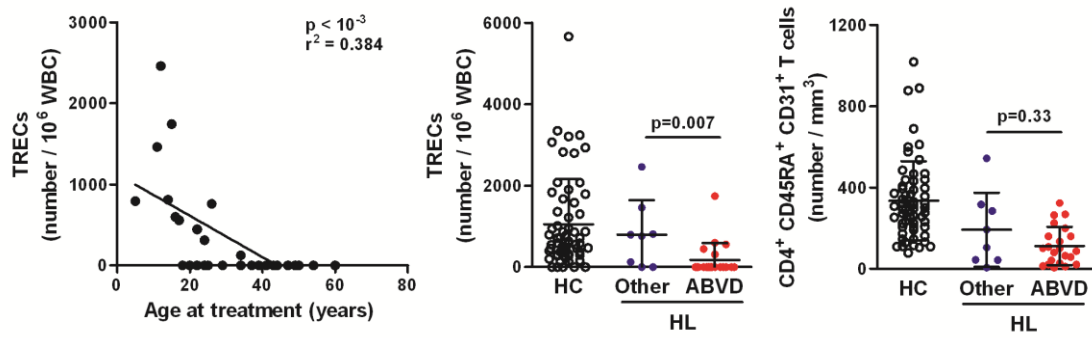
**Figure 1. Immune status and thymic output in Hodgkin's lymphoma (HL) patients and healthy controls (HC).** (A) Lymphocyte subsets. (B) Analysis of TRECs expression. Number of naive CD4<sup>+</sup>CD31<sup>+</sup> T cells (C and E) and TRECs number (D and F) depending on age and treatment.

**Table I: Characteristics of Hodgkin's lymphoma patients and healthy controls**

	Healthy subjects mean [sd]	Hodgkin's lymphoma patients mean [sd]	
Lymphocytes, (cells/mm <sup>3</sup> )	2123 [576]	2065 [1106]	<i>P</i> = .24
CD3 <sup>+</sup>	1531 [425]	1231 [649]	<b><i>P</i> = .02</b>
CD3 <sup>+</sup> CD4 <sup>+</sup> CD8 <sup>-</sup>	954 [302]	633 [293]	<b><i>P</i> &lt; .001</b>
CD3 <sup>+</sup> CD8 <sup>+</sup> CD4 <sup>-</sup>	492 [197]	493 [334]	<i>P</i> = .45
CD3 <sup>+</sup> CD4 <sup>+</sup> CD28 <sup>-</sup>	18 [23]	30 [53]	<i>P</i> = .35
CD4 <sup>+</sup> CD28 <sup>-</sup> /CD4 <sup>+</sup> (%)	2% [2.8]	4%	<b><i>P</i> = .02</b>
CD3 <sup>+</sup> CD4 <sup>-</sup> CD8 <sup>-</sup> TCRαβ <sup>+</sup>	16 [10]	11 [6]	<b><i>P</i> = .01</b>
CD4 <sup>+</sup> /CD8 <sup>+</sup> ratio in TCRαβ <sup>+</sup>	2.4 [1.2]	1.6 [0.6]	<b><i>P</i> = .003</b>
CD3 <sup>+</sup> TCRαβ <sup>+</sup> CD4 <sup>-</sup> CD8 <sup>+</sup>	448 [177]	444 [316]	<b><i>P</i> &lt; .001</b>
CD3 <sup>+</sup> TCRαβ <sup>+</sup> CD8 <sup>-</sup> CD4 <sup>+</sup>	949 [302]	630 [293]	<b><i>P</i> &lt; .001</b>
CD3 <sup>+</sup> TCRγδ <sup>+</sup> CD4 <sup>-</sup> CD8 <sup>-</sup>	48 [46]	64 [45]	<b><i>P</i> &lt; .001</b>
CD3 <sup>+</sup> CD4 <sup>+</sup> CD45RA <sup>+</sup>	512 [304]	202 [154]	<b><i>P</i> &lt; .001</b>
CD3 <sup>+</sup> CD4 <sup>+</sup> CD45RA <sup>+</sup> CD31 <sup>+</sup>	335 [195]	134 [125]	<b><i>P</i> &lt; .001</b>
CD3 <sup>+</sup> CD4 <sup>+</sup> CD45RA <sup>+</sup> CD31 <sup>-</sup>	177 [146]	67 [46]	<b><i>P</i> &lt; .001</b>
CD4 <sup>+</sup> CD45RA <sup>+</sup> CD31 <sup>+</sup> /CD4 <sup>+</sup> CD45RA <sup>+</sup> CD31 <sup>-</sup> T cell ratio	2.3 [1.16]	2 [1.29]	<i>P</i> = .27
CD3 <sup>+</sup> CD4 <sup>+</sup> CD45RO <sup>+</sup>	475 [153]	454 [249]	<i>P</i> = .21
CD3 <sup>-</sup> (CD56 <sup>+</sup> and/or CD16 <sup>+</sup> )	294 [159]	372 [307]	<i>P</i> = .16
CD3 <sup>-</sup> (CD56 <sup>+</sup> and /or CD16 <sup>+</sup> )/lymphocytes (%)	13.8% [6]	17.5 % [10]	<b><i>P</i> = .04</b>
CD19 <sup>+</sup>	265 [112]	382 [301]	<b><i>P</i> = .01</b>
CD19 <sup>+</sup> /lymphocytes (%)	12% [3,5]	17.7 % [7]	<b><i>P</i> &lt; .001</b>
CD19 <sup>+</sup> CD27 <sup>+</sup> /CD19 <sup>+</sup> (%)	30.9 (%) [12]	19 (%) [9]	<b><i>P</i> &lt; .001</b>
TRECs number/10 <sup>6</sup> WBC			
At least 100	n=55	n=12	
Less than 100	n=5	n=18	
Mean [sd]	1057 [1108]	647 [1750]	<b><i>P</i> &lt; .001</b>
Median [interquartile range]	610 [345-1470]	0 [0-598]	

WBC, white blood cells.





**Legend Fig E1.**

Analysis of TRECs numbers in Hodgkin's lymphoma patients according to the age at diagnosis (left panel). Analysis of TRECs (middle panel) and naive CD4<sup>+</sup> CD31<sup>+</sup> T cell (right panel) according to the type of chemotherapy. Horizontal bars indicate mean values  $\pm$  sd.

**Table E1: Characteristics of Hodgkin's lymphoma patients and healthy controls**

	Healthy controls	Hodgkin's lymphoma patients	<i>P</i>
Sex			
Male	22	11	<i>P</i> = 1
Female	38	19	
Age at analysis			
Mean age, years [sd]	44.1 [15.5]	43.8 [15.2]	
20-30	15	7	<i>P</i> = 1
31-45	14	8	
>45	31	15	
* Stage of Hodgkin's lymphoma			
II	NA	7	NA
III	NA	23	
† Chemotherapy regimen			
ABVD	NA	22	NA
VB- VP	NA	4	
Other	NA	8	
‡ Autoimmunity			
Yes	1	2	<i>P</i> = .25
No	59	28	
§ Thyroid abnormality			
Yes	7	19	<i>P</i> = .0001
No	52	9	
NA	1	2	
Numbers of infections per year			
Less 2 infections	58	23	<i>P</i> = .03
2 or more infections	1	5	
NA	1	2	

\* Patients were staged according to the Ann Arbor classification (Stage II, involvement of two or more lymph node regions on the same side of the diaphragm; Stage III, involvement of lymph node regions on both sides of the diaphragm, which may include the spleen).

† ABVD: doxorubicin, bleomycin, vinblastine, dacarbazine; VB-VP: vinblastine, bleomycin, etoposide (VP16), and Prednisone; Other: EBVM (Epirubicin, bleomycin Vinblastin, Methotrexate), VABEM (vindesine doxorubicin, carmustine, etoposide, methylprednisolone), BEACOPP baseline (bleomycin, etoposide, doxorubicin, cyclophosphamide, vincristine, procarbazine, prednisone), OPPA (vincristine, doxorubicin, prednisone, procarbazine), BEAM (carmustine, etoposide, cytosine arabinoside, melphalan).

‡ Autoimmunity is defined with an autoimmune disease as systemic lupus erythematosus or rheumatoid arthritis etc.

§ Hypothyroidism or hyperthyroidism measured by thyroid function tests.

|| Numbers of infections are defined as respiratory infections (eg, sinusitis, otitis, bronchitis) in one year and the need for antibiotics.

**Table E2: Factors associated with the number of CD31<sup>+thymic</sup> naïve cells and the TRECs status in multivariate analysis.** This multivariate analysis describes different factors associated with the number of CD31<sup>+thymic</sup> naïve cells (a and b) and with a small amount of TRECs (c and d) in the population including either Hodgkin's Lymphoma patients (HL) and healthy controls (HC) (a and c) or among HL patients (b and d). A positive regression coefficient means that the factor is associated with higher levels of CD31<sup>+thymic</sup> naïve cells or a risk of having a small amount of TRECs. A negative coefficient means a decrease of these parameters.

a) Factors associated with the number of CD31<sup>+thymic</sup> naïve cells in HL and HC.

	Coefficient	p	95%CI
Male	96.80	0.007	[26.2, 167.4]
Age at analysis	-3.60	0.002	[-5.8, -1.3]
Hodgkin's Lymphoma	-202.70	0.000	[-268.9, -136.5]

b) Factors associated with the number of CD31<sup>+thymic</sup> naïve cells in HL.

	Coefficient	p	95%CI
Age at treatment	-5.10	0.000	[-7.2, -3]
Thyroid abnormality	-72.30	0.030	[-137, -7.6]

c) Factors associated with a small amount of TRECs (less than 100 copies/10<sup>6</sup> WBC) in HL and HC

	Coefficient*	p	95%CI
Male	-1.45	0.081	[-3.09, 0.17]
Age at analysis	0.10	0.002	[0.03, 0.17]
Hodgkin's Lymphoma	4.06	0.000	[2.08, 6.05]

d) Factors associated with a small amount of TRECs (less than 100 copies/10<sup>6</sup> WBC) in HL

	Coefficient*	p	95%CI
Age at treatment	0.15	0.007	[0.04, 0.27]
Thyroid abnormality	1.47	0.231	[-0.94, 3.89]
Number of previous chemotherapies	0.80	0.519	[-1.63, 3.23]

\* With TRECs status analysis, the coefficients have a special meaning: the antilogarithm of the coefficient equals the odds ratio.

