



HAL
open science

New archaeometric data on Roman wine amphorae from Gallia Narbonensis. The pottery workshop at Lattara (Lattes, south France).

Verònica Martínez Ferreras, Fabrice Bigot

► To cite this version:

Verònica Martínez Ferreras, Fabrice Bigot. New archaeometric data on Roman wine amphorae from Gallia Narbonensis. The pottery workshop at Lattara (Lattes, south France). . 13th European Meeting on Ancient Ceramics, Sep 2015, Athènes, Greece. hal-01391483

HAL Id: hal-01391483

<https://hal.science/hal-01391483>

Submitted on 3 Nov 2016

HAL is a multi-disciplinary open access archive for the deposit and dissemination of scientific research documents, whether they are published or not. The documents may come from teaching and research institutions in France or abroad, or from public or private research centers.

L'archive ouverte pluridisciplinaire **HAL**, est destinée au dépôt et à la diffusion de documents scientifiques de niveau recherche, publiés ou non, émanant des établissements d'enseignement et de recherche français ou étrangers, des laboratoires publics ou privés.



Distributed under a Creative Commons Attribution - NoDerivatives 4.0 International License

New archaeometric data on Roman wine amphorae from *Gallia Narbonensis*. The pottery workshop at *Lattara* (Lattes, South France)

¹ ERAAUB, Department of Prehistory, Ancient History and Archaeology, University of Barcelona. Barcelona, Spain (vmartinez@ub.edu)

² Université Montpellier III, UMR 5140 CNRS Archéologie des Sociétés Méditerranéennes, Lattes, France (fabrice-bigot@hotmail.fr)

INTRODUCTION

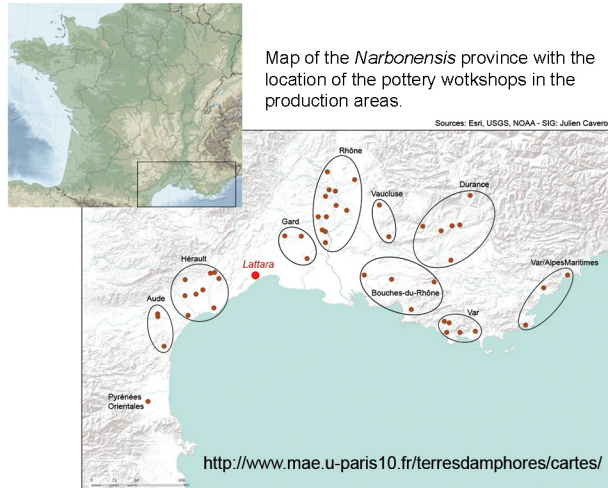
Viticulture was one of the main economic activities developed in the *Narbonensis* province during the Early Roman Empire. Numerous wine production centres and amphorae workshops emerged along the river basins.

Most of the amphora types produced to trade wine in the Western and Eastern Mediterranean exhibit globular/ovoid bodies with flat bases (types G1, G2, G3 and G4). Nevertheless, the contemporary Italic and Hispanic prototypes with pointed bases (Dr.1B and Dr.2/4) were also imitated in some pottery centres.

An important pottery workshop during 75-125 AD was located in the port city of *Lattara* (Lattes). The excavation of a massive pottery dump covering the large fosse of a destroyed kiln provided c. 1300 amphorae (mainly G1 and G4) together with slipped/unslipped wares, cooking pots and building materials.



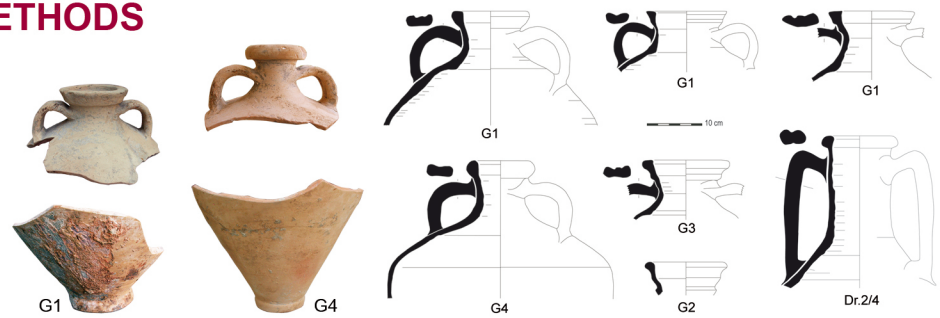
Amphorae from the pottery dump



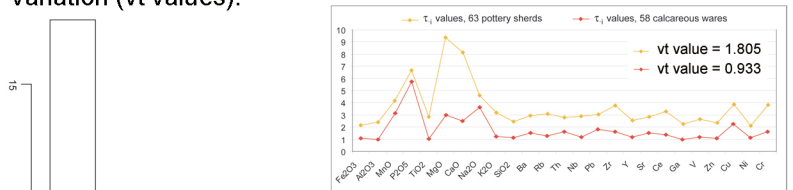
SAMPLING AND METHODS

The geochemical composition of 57 amphorae (types G1, G4 and a few G2, G3, Dr.1 and Dr.2/4), 4 common wares and 2 bricks was examined through XRF and XRD. Thin section analysis was carried out on 26 selected samples. Seven clayey sediments from the dump were also analysed to obtain a reference local elemental pattern to investigate the possibility of local provenance.

The results were compared with the XRF database of the amphorae produced at several workshops in the *Narbonensis* province, created by the UMR7041 ARSCAN and MSH MOM Lyon 2 (FRA) and available online (http://www.mae.u-paris10.fr/terresdamphores/).

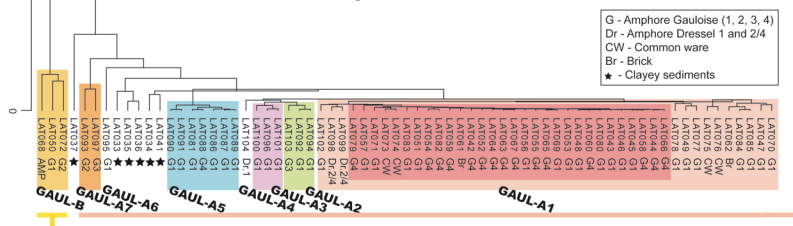


The Compositional Variation Matrix provides the vt and the τ_i values; most of the variability is introduced by MnO , P_2O_5 , MgO , CaO , Na_2O , K_2O , Pb , Zr , Ce , Cu , Co . The clays significantly contribute to the total variation (vt values).



Two main groups were identified:

- **GAUL-A**: Calcareous pottery, clustered in 7 chemical groups from which A1 corresponds to the *Lattara* RG.
- **GAUL-B**: Comprises 3 low calcareous sand tempered sherds classified as "gauloise sableuse".



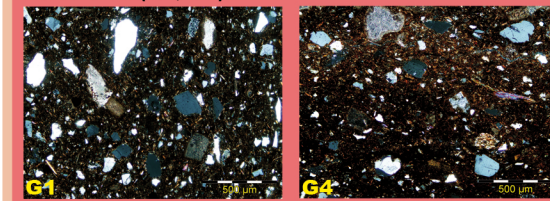
RESULTS

GAUL-A: Calcareous medium-coarse groups

(Thin-section photomicrographs 100x, XPL)

LATTARA POTTERY PRODUCTION

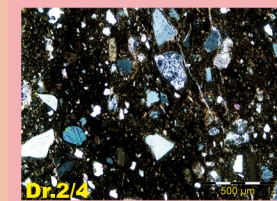
GAUL-A1 (G1, G4)



c.f.: Common, sub-angular inclusions
*** Qtz, Cal, Ca-fos
** Ms, Kfs, Met, Fe-Sed, op
* Am, Ep, Cpx, Grt

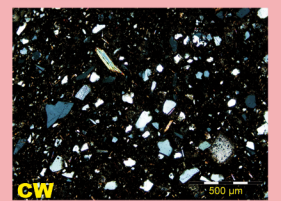
LOCAL-REGIONAL POTTERY PRODUCTION

GAUL-A1'



c.f.: Mod. abundant inc.
*** Qtz, Cal, Ca-fos
** Cht, Ms, Kfs, op
* Met, Am, Ep, Cpx

GAUL-A1''



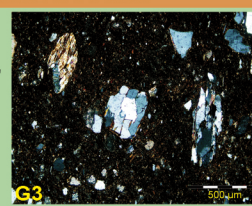
c.f.: Common, sub-ang/r. inc.
*** Qtz
** Ms, Kfs, Pl, Cal, Ca-fos
* Cht, Met, op

REGIONAL POTTERY PRODUCTION

GAUL-A2 (Type G1)

c.f.: Common sub-ang. inc., medium/coarse grain size.

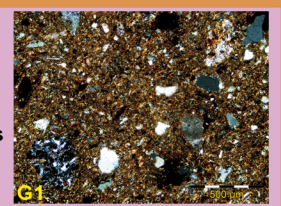
*** Qtz, Met, Cal
** Ms, Kfs, op
* Bt



GAUL-A3 (Type G1)

c.f.: Mod. abundant inc., sub-angular to sub-round.

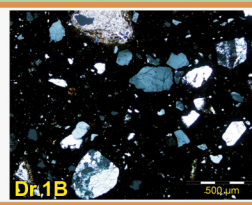
*** Clst, op, Qtz, Cal, Ca-fos
** Kfs, Ms, Met, Volc
* Cpx, Bt, Cht



GAUL-A4 (Type Dr.1B)

c.f.: Abundant, sub-round inclusions.

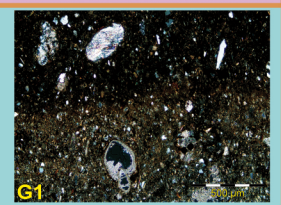
*** Qtz, Met, Cal, Ca-fos
** Cht, Kfs, Pl
* Ms, Grt, op



GAUL-A5 (Types G4, G1)

c.f.: Few inc., sub-angular to sub-rounded.

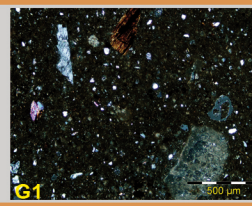
*** Cal, Ca-fos, Qtz
** Kfs, Pl, Met
* Am, Cpx



GAUL-A6 (Type G1)

c.f.: Few inc., sub-angular.

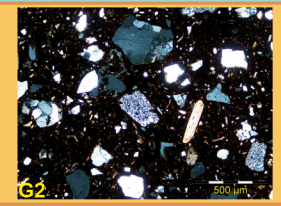
*** Qtz, Met, Bt, op
** Ms, Kfs, Cal, Ca-fos
* Cht, Sed.



GAUL-A7 (Types G2, G3)

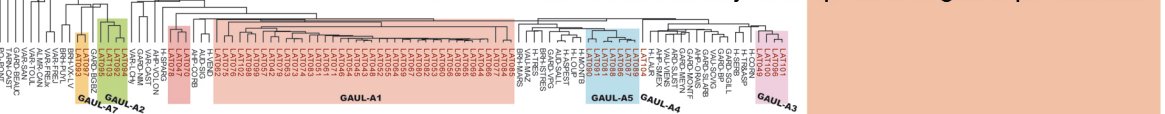
c.f.: Abundant inc., sub-rounded.

*** Qtz, Met
** Cht, Kfs, Ms, Cal, Ca-fos
* Am, Ep, op, Cpx



(Am: amphibole; Bt: biotite; Ca-fos: foraminifer; Cal: Calcite; Cht: chert; Clst: claystone; Cpx: clinopyroxene; Ep: epidote; Grt: garnet; Kfs: K-feldspar; Met: metamorphic rock; Ms: muscovite; op: opaque mineral; Pl: plagioclase; Qtz: quartz; Sed: sedimentary rock; Volc: volcanic rock)

XRF chemical data of the calcareous sherds from *Lattara* was compared with the compositional averages (RG) of several amphora productions in the *Narbonensis* province. The former are joined in a main group (A1 = *Lattara* Reference Group). Group A-3 resembles the amphorae produced in the central Hérault basin. The provenance of the rest of the sherds is uncertain but they correspond to regional productions.

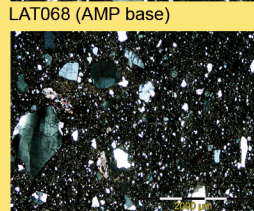
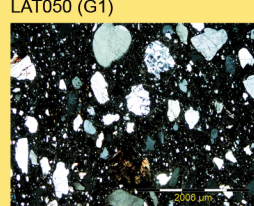
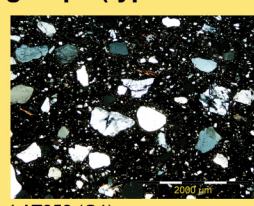
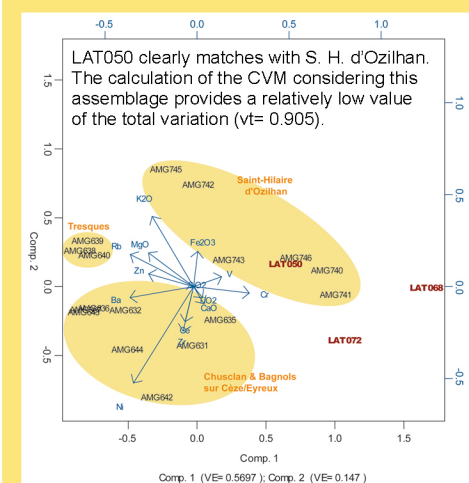


REGIONAL POTTERY PRODUCTION

GAUL-B: Low calcareous sand tempered groups (types G1&G2)

Coarse fabric with abundant subrounded inc.
c.f.: *** Qtz; ** Met, Kfs, Cht, Ms, op; * Cal

XRF data of samples LAT050, 68, 72 was compared with the 'sableuse' G1 amphorae produced in 4 *figlinae* from the Rhône basin in the Gard area.



Thin-section photomicrographs (40x, XPL)

CONCLUSIONS

The study reveals that the main amphora types produced in *Lattara* were the G1 and G4 together with common wares, building materials and probably the Dressel 2/4 type. The G1 was mainly used for local-regional diffusion and the G4 for large-scale trade. Imports from other pottery workshops located in the *Narbonensis* (G1 from the central Hérault basin, sand tempered amphorae from the Rhône basin in the Gard area and other regional productions) have been recognised.

ACKNOWLEDGEMENTS

To the responsables of the website "Terres d'amphores", especially to F. Laubenheimer and A. Schmitt; to J. Buxeda i Garrigós for having supervised the first characterisation of part of the sherds analysed.