



HAL
open science

Matched filter detection with dynamic threshold for cognitive radio networks

Fatima Salahdine, Naima Kaabouch, Hassan El Ghazi

► **To cite this version:**

Fatima Salahdine, Naima Kaabouch, Hassan El Ghazi. Matched filter detection with dynamic threshold for cognitive radio networks. *Wireless Networks and Mobile Communications (WINCOM), 2015 International Conference on, IEEE, Oct 2015, 2015-10-23, France. <10.1109/WINCOM.2015.7381345>. <hal-01371162>*

HAL Id: hal-01371162

<https://hal.science/hal-01371162v1>

Submitted on 24 Sep 2016

HAL is a multi-disciplinary open access archive for the deposit and dissemination of scientific research documents, whether they are published or not. The documents may come from teaching and research institutions in France or abroad, or from public or private research centers.

L'archive ouverte pluridisciplinaire **HAL**, est destinée au dépôt et à la diffusion de documents scientifiques de niveau recherche, publiés ou non, émanant des établissements d'enseignement et de recherche français ou étrangers, des laboratoires publics ou privés.



HAL Authorization

Matched Filter Detection with Dynamic Threshold for Cognitive Radio Networks

Fatima Salahdine^{1,2}, Hassan El Ghazi¹, Naima Kaabouch², Wassim Fassi Fihri¹

¹STRS Lab, National Institute of Posts & Telecommunication, Rabat, Morocco

²Electrical Engineering Department, University of North Dakota, Grand Forks, USA

Email: salahdine@inpt.ac.ma, elghazi@inpt.ac.ma, naima.kaabouch@enr.und.edu, wassim.fassifihri@gmail.com

Abstract—In cognitive radio networks, spectrum sensing aims to detect the unused spectrum channels in order to use the radio spectrum more efficiently. Various methods have been proposed in the past, such as energy, feature detection, and matched filter. These methods are characterized by a sensing threshold, which plays an important role in the sensing performance. Most of the existing techniques used a static threshold. However, the noise is random, and, thus the threshold should be dynamic. In this paper, we suggest an approach with an estimated and dynamic sensing threshold to increase the efficiency of the sensing detection. The matched filter method with dynamic threshold is simulated and its results are compared to those of other existing techniques.

Keywords—cognitive radio networks; spectrum sensing; energy detection; matched filter detection; autocorrelation based sensing; estimated dynamic threshold

I. INTRODUCTION

The use of smart devices has exponentially increased over the last decade, which resulted in an increase of spectrum channels demand. However, radio spectrum is a finite resource [1]. Some channels are highly used while other are sparsely used which caused a great spectrum scarcity. Studies have shown that there is significant scope of improving spectrum utilization [2]. One of the solutions proposed to address the spectrum scarcity problem is cognitive radio. This technology allows unlicensed users, secondary users (SU), to use the radio spectrum channels allocated to licensed users, primary users (PU), when the channels are temporally not being utilized by the PUs. According to Mitola [3], cognitive radio is an intelligent radio frequency transmitter/ receiver designed to detect available channels in a wireless spectrum and change transmission parameters enabling more communications and improving radio operating behavior.

One of the important functions in a cognitive radio is spectrum sensing, which allows an SU to detect the presence or absence of PU transmission in licensed frequency bands, and allow the SU to borrow unused spectrum from the PU. A number of sensing techniques have been proposed over the last decade [4]. These techniques are classified into two categories: cooperative sensing and non-cooperative sensing [5, 6]. The non-cooperative sensing category is sub-divided into three subcategories: energy, feature, and matched filter based sensing. Energy detection is the simplest technique which does not

require any information about the PU signal to operate. It works by comparing the received signal energy with an estimated threshold which depends on the noise power [7]. Correlation based sensing is a method based on the value of the autocorrelation coefficient of the received signal and exploits the autocorrelation features that exist in the transmitted signal and that are not present in the noise [8, 5]. Matched filter based sensing is a coherent pilot sensor which detects known PU signals. It maximizes the signal to noise ratio (SNR) at the output of the detector, but it requires a prior knowledge about the PU signal. Thus, it is assumed that the PU transmitter sends a pilot stream simultaneously with the data and the SU receiver has a perfect knowledge of the pilot stream to verify its transmission at the frequency band [1].

Sensing threshold is an important parameter in spectrum sensing. When a detector does not properly adjust its threshold, the sensing performance is degraded. A number of approaches, based on energy detection, were proposed [11-16]. As the sensing performance is highly affected by the estimation error of noise power, a dynamic estimation style of noise power is recommended in [11]. Adaptive threshold control is implemented in [12] with linear adaption of the threshold based on signal to interference plus noise ratio ($SINR$). This approach attains a considerably higher SU throughput than the fixed threshold approach, but maintains unacceptable false alarms. Adaptive threshold in unknown white Gaussian noise is presented in [13] with noise power estimation, keeping the false alarm rate at a preferred point under any noise level. It is based on a concept of a dedicated noise estimation channel in which only noise is received by SU. An improved energy detection method is proposed in [14], where misdetection of PU transmission due to sudden drop in PU transmission power is addressed by keeping an additional updated list of the latest fixed number of sensing events that are used to calculate an average test statistic value. A double-threshold technique is proposed in [15] with the aim of finding and localizing narrowband signals. Another technique is presented in [16] based on wideband spectrum sensing, which senses the signal strength levels within several frequency ranges to improve the opportunistic throughput of SU and decrease the interference to the PU.

In [7], each pair of (P_d, P_f) was associated with a particular threshold to make sensing decision. In [17], the sensing

threshold is determined dynamically by multiplying the theoretical threshold by a positive factor. Several papers do not mention how the threshold was selected. However, with a static threshold, the sensing decision is not reliable because of the uncertainty of the noise. In this work, we suggest an estimated and dynamic sensing threshold for energy detection, matched filter detection and correlation based detection to increase the probability of detection and the decision reliability.

To evaluate the performance of spectrum sensing techniques, several metrics were used, including the probability of detection, P_d , and the probability of false alarm, P_f . P_d is the probability that the SU declares the presence of a PU signal. The higher the P_d , the better the PU protection is. P_f is the probability that SU declares the presence of PU when the spectrum is idle. The lower the P_f , the more the sensing method is effective in detecting the signal [4].

The remaining of this paper is organized as follows. In section II, we describe the sensing methods. In section III we explain the simulation methodologies for each method. The results of this simulation are discussed in section IV. Finally, the conclusion is given in section V.

II. SPECTRUM SENSING TECHNIQUES

Spectrum sensing allows the cognitive radio users to learn about the radio environment by detecting the presence of an event using one or multiple sensors. It consists in detecting the PU signal transmission in a given time to make decision to transmit in a frequency band [7]. The spectrum sensing model can be formulated as follows

$$\begin{cases} y(n) = h * s(n) & H_0: \text{PU absent} \\ y(n) = h * s(n) + w(n) & H_1: \text{PU present} \end{cases} \quad (1)$$

where $n=1 \dots N$, N is the sample number, $y(n)$ is the SU received signal, $s(n)$ is the PU signal, $w(n)$ is the additive white Gaussian noise (AWGN) with zero mean and variance δ_w^2 , h is the complex channel gain of the sensing channel, H_0 denotes the PU signal is absent, and H_1 denotes the PU signal is present. The output T of the detector is compared to a threshold to make the right decision

if $T \geq \text{threshold}$ then PU signal is present
if $T < \text{threshold}$ then PU signal is absent

If PU signal is absent, SU can start to transmit its streams; if not, SU does not transmit or stops its transmission. Fig. 1 presents the general model of spectrum detection.

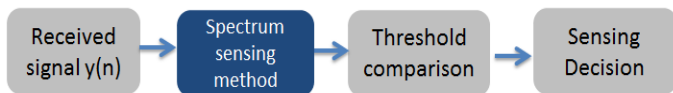


Fig. 1. General model of spectrum sensing.

This model was used for all techniques; for each technique we changed the spectrum sensing method block.

A. Energy detection method

The decision statistic of an energy detector can be calculated from the squared magnitude of the FFT averaged over N

samples. The output is the received signal energy called the test statistic T_{ED} as given by

$$T_{ED} = \sum_N y(n)^2 \quad (2)$$

where $n=1 \dots N$, N is the sample number, $y(n)$ is the SU received signal.

The two performance metrics (P_d , P_f) can be evaluated using the central limit theorem when N is larger than 250 ($N > 250$) to approximate the test statistics as a Gaussian. These two probabilities are given by

$$P_d = Q\left(\frac{\lambda - N(1+\gamma)}{\sqrt{2N(1+\gamma)^2}}\right) \quad (3)$$

$$P_f = Q\left(\frac{\lambda - N\delta_w^2}{\sqrt{2N\delta_w^4}}\right) \quad (4)$$

where Q is the Q-function, λ is the sensing threshold, γ is the SNR, $\hat{\lambda}$ is the average threshold $\hat{\lambda} = \lambda/\delta_w^2$.

The sensing threshold depends on noise power. It is expressed for a target P_f as

$$\lambda = (Q^{-1}(P_f) \sqrt{2N} + N)\delta_w^2 \quad (5)$$

Thus, the energy detection technique is sensitive to the noise uncertainty; however, its implementation is very simple [7].

B. Matched filter detection with an estimated threshold

It is the optimal filter that projects the received signal in the direction of the pilot x_p [10]. The test statistic is given by

$$T_{MFD} = \sum_N y(n) x_p^*(n) \quad (6)$$

The test statistics T_{MFD} is compared with a particular threshold to give the decision. T_{MFD} is a Gaussian random variable and a linear combination of Gaussian random variables. According to the Neyman-Pearson criteria [7], P_d and P_f are expressed as

$$P_d = Q\left(\frac{\lambda - E}{\sqrt{E\delta_w^2}}\right) \quad (7)$$

$$P_f = Q\left(\frac{\lambda}{\sqrt{E\delta_w^2}}\right) \quad (8)$$

where E is the PU signal energy. Sensing threshold is giving as a function of PU signal energy and noise variance

$$\lambda = Q^{-1}(P_f) \sqrt{E\delta_w^2} \quad (9)$$

Assuming that the signal is completely known as unreasonable and impractical, some communication systems contain pilot stream or synchronization codes for channel estimation and frequency band sensing. A hybrid matched filter structure is proposed in [18] based on traditional matched filter by mixing the segmented matched filter and the parallel matched filter to overcome the frequency offset sensitivity. This structure permits the balance between sensing time and hardware complexity. As both carrier frequency offset (CFC) and phase

noise (NP) demean the sensing performance of matched filter detection, in [19] matched filter detection performance is examined in presence of CFC and PN, and robust sensing techniques are proposed to overcome the negative impact of CFC and NP on detection performance.

C. Autocorrelation based sensing

In signal processing, for a given signal $s(t)$, the autocorrelation function is defined as [9]

$$R_{s,s}(\tau) = \int_{-\infty}^{+\infty} s(t) * s^*(t - \tau) dt \quad (10)$$

The sensing decision is based on the knowledge of the statistical distribution of the autocorrelation function. For random noise, the first lag of the autocorrelation is very small or negative, but when there is a signal, the autocorrelation at the first lag represents a significant value. Thus the sensing method consists of comparing lag0 and lag1 of the autocorrelation if the received signal and sensing decision is made as following:

$$\begin{aligned} \text{if } \text{lag}0 \gg \text{lag}1 & \quad \text{PU transmission is absent} \\ \text{if } \text{lag}0 \approx \text{lag}1 & \quad \text{PU transmission is present} \end{aligned}$$

Correlation threshold is the margin between the two lag values, for example, $\text{lag}0$ is superior to (λ %) of $\text{lag}1$, where λ is a percentage value that represents a decision margin [3].

III. SIMULATION METHODOLOGY

In our work, three detection methods are implemented following a specific methodology for each one. The general simulation model is presented in Fig. 2. PU signal is generated as a QPSK signal with N samples. The AWGN channel adds white Gaussian noise to the input signal with the same number of samples N . This random noise is generated according to the SNR range value and the input signal power. After the spectrum sensing method is applied to the output $y(n)$, the test statistic is calculated according to each sensing method and compared with the estimated dynamic threshold. Based on this comparison, the sensing decision is made.

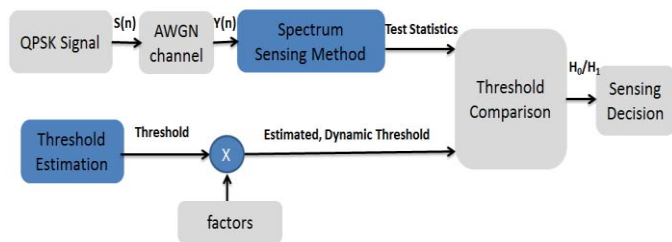


Fig. 2. Simulation model of spectrum sensing methods.

For the threshold estimation block, the threshold is estimated dynamically at each iteration, and multiplied by a threshold factor to see the impact of the threshold on detection performance. For each method, the threshold is estimated and then generated dynamically to perform the test comparison. An estimated dynamic threshold λ' is also used to simulate P_d and P_f for several values of SNR and sample number, which can be a strong point for our simulation results. λ' is giving as

$$\lambda' = k * \lambda \quad (11)$$

where λ is the estimated threshold based on each sensing method algorithm and k is a positive factor.

P_d and P_f are used to evaluate the performance of each sensing technique. The simulation process is done for a number of iterations which is called cycle number and it represents the total number of experiments. P_d is simulated as the ratio of the total number of detections, N_d , by the total number of experiments N_t . P_f is simulated as the ratio of the total number of times the signal is not detected, N_f , by the total number of experiments N_t . These two probabilities are given by

$$P_d = N_d / N_t \quad (12)$$

$$P_f = N_f / N_t \quad (13)$$

To evaluate the performance of a given technique, the simulation process, shown in Fig. 3, is implemented and simulated for N_t experiments to get P_d and P_f . At each iteration and for each sensing parameter, a variable count which is initialized to zero is incremented by one at each iteration. If the test statistic is greater than the sensing threshold, a variable n is incremented by one, and if not, a variable m initialized by zero will be incremented by one. At the end of the loop, after N_t experiments, the total number of detections N_d is the total number of n values and N_f is the total number of m values, so the probability of detection P_d and probability of false alarm P_f are the average value over N_t experiments.

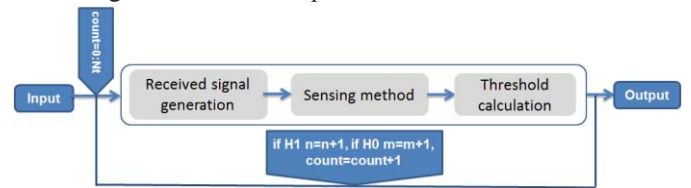


Fig. 3. Simulation algorithm for spectrum sensing methods.

The model inputs are

- Sample number is chosen as the number of samples that gives maximum value of P_d .
- Total number of experiments: 1000 cycles.
- SNR range: -20dB to +20dB.
- Threshold factors: 1, 2, 3, 4.

For each parameter setting, the outputs, N_d and N_f are obtained by varying SNR, or threshold, or number of samples. Afterwards, P_d and P_f are calculated for the different SNR values, N , and threshold.

In this paper, we chose to present the matched filter detection, detailed methodology and simulation using an estimated dynamic threshold approach. At each iteration of the loop, matched filter detection is done by convolving the received signal with some PU pilot stream, the output is averaged over N samples to get the test statistics T as shown in Fig.4.

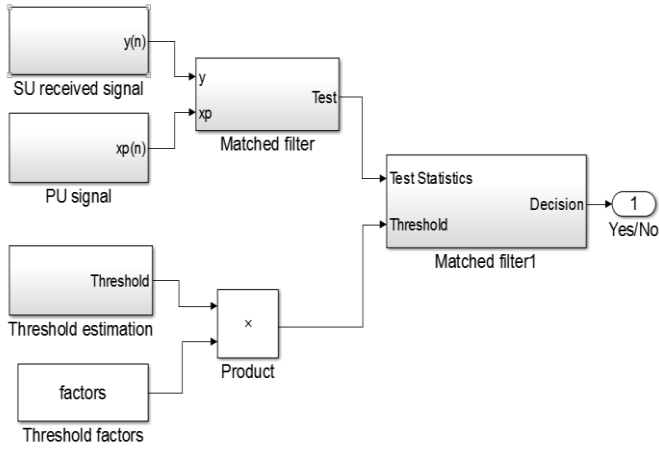


Fig. 4. Simulation model for matched filter detection.

To estimate the sensing threshold, we used the quite time approach which refers to the time period when it is assumed that PU signal is absent and only noise is transmitted. Sensing threshold is given by

$$\lambda = \sum_N w(n)x_p^*(n) \quad (14)$$

where λ represents the estimated threshold value, $n=1 \dots N$, N is the sample number, $w(n)$ is the additive white Gaussian noise, $x_p^*(n)$ is the PU pilot stream. At each iteration, the threshold value is generated dynamically using the quit time approach and multiplied by a threshold factor (1 to 4) to investigate the impact of the threshold on the performance of the sensing technique.

IV. RESULTS AND DISCUSSION

The results of the performance of the matched filter were compared to those of energy detection and autocorrelation techniques. To compare the three methods, simulations were done using the same parameters and varying SNR , threshold and number of samples N . Fig. 5 shows P_d as a function of SNR for the three aforementioned sensing techniques. In this simulation $N=1000$, and the threshold factor =1.

As one can see, P_d increases with SNR . For SNR values higher than 0dB, P_d is higher than 90%. Under high SNR values, in which the signal is higher than noise, matched filter detection achieves its 100% of detection with a small number of samples while energy detection presents a very high probability of detection. However, false alarm is very high for energy detection, which means that this detector is not able to distinguish between noise and signal. Autocorrelation based sensing presents a lower probability of detection comparing to the other methods. However, the lack of false alarm data does not allow us to compare the performances of the three sensing techniques.

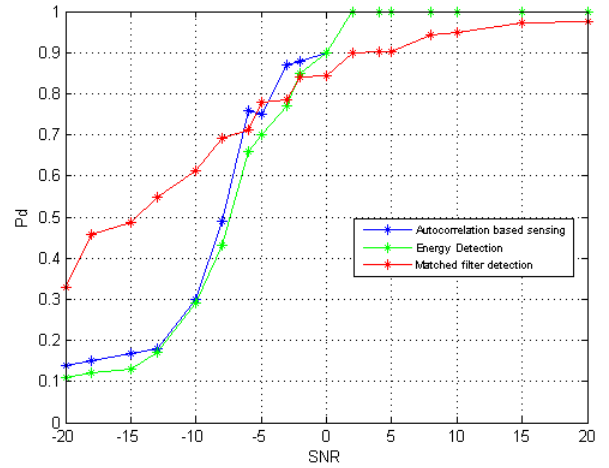


Fig. 5. Simulation results for sensing methods comparison P_d vs SNR .

To summarize, in order to obtain a good detection, each method has a particular behavior under certain environment conditions. For energy detection, it gives a good performance under high SNR values, and, thus works best only for high power signals, high threshold, and high number of samples. However, this method is not reliable because of the non-ability to distinguish between noise and signal after detection. On the other hand, matched filter sensing achieves a high performance for low sample number and can work under low SNR values. For the autocorrelation based detection, the results give low P_d under low SNR compared to the others methods.

In the second experiment, we focused on matched filter detection results. The simulation is done for 1000 experiments to get an average result of P_d and P_f for each set of parameters.

Fig. 6 represents P_d as a function of N for several values of SNR . For higher SNR (> -4dB), P_d is nearly equal to 100%. For lower SNR (< -20dB), P_d increases for N greater than 400 samples. P_d also increases with the increase of N and it achieves 100% value for $N=1000$. Thus, for small number of samples, the matched filter detector can work even at low SNR , and achieves 100% for 1000 samples.

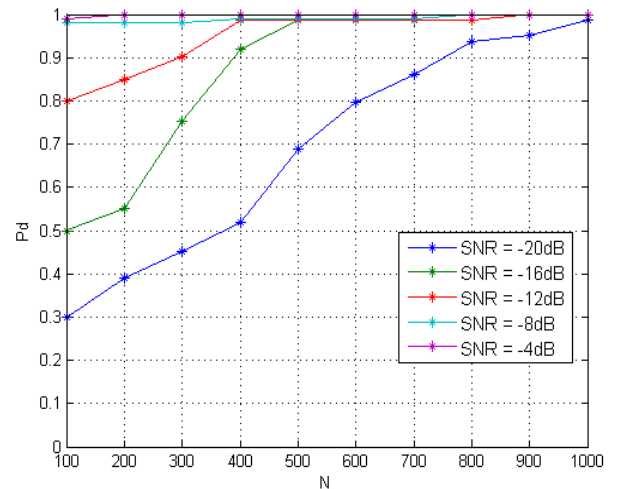


Fig. 6. Simulation results for P_d vs N with variable SNR .

P_d and P_f were calculated by varying the SNR from -20 dB to $+20$ dB for several values of threshold factor, N was chosen equal to 1000. Fig. 7 presents the P_d as a function of SNR for several values of threshold factor. For fixed threshold factor, P_d increases with SNR . As one can see, P_d decreases when the threshold factor increases.

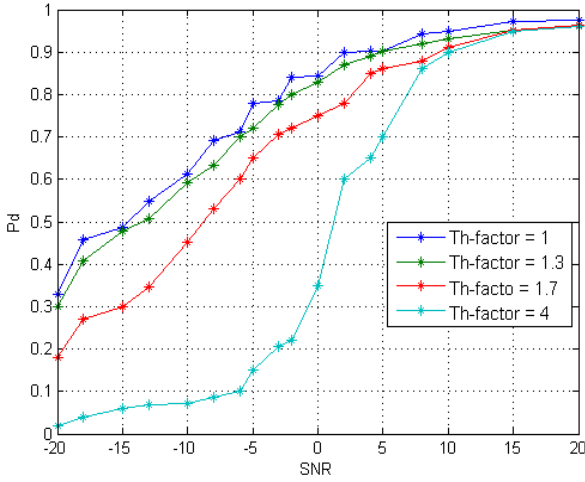


Fig. 7. Simulation results for P_d vs. SNR with variable threshold.

Fig. 8 presents P_f as a function of SNR for several values of threshold factor. For a high threshold factor ($Th_factor = 4$), P_f decreases for a low SNR values (< -10 dB); and when the threshold factor decreases, P_f increases. For a fixed threshold factor and low SNR , P_f is high. This figure also show the impact of the threshold on P_f which decreases with the increase of threshold and SNR .

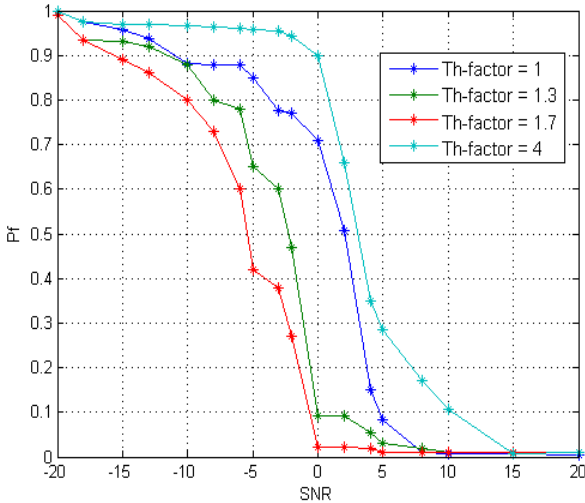


Fig. 8. Simulation results for P_f vs. SNR with variable threshold.

These simulation results and others show that matched filter sensing technique can work under low SNR and with a small number of samples.

Table I presents a comparison between the proposed simulation and the other spectrum sensing techniques, energy detection and autocorrelation.

TABLE I. SPECTRUM SENSING TECHNIQUES COMPARISON

Energy detection	Autocorrelation based sensing	Matched filter detection
Low complexity	High data processing	High complexity
Prior knowledge of PU signal is not required	Knowledge of statistical distribution of the autocorrelation function is required	Prior knowledge of PU signal is required
- Non-ability to distinguish between noise and signal after detection - Good performance under high SNR	- Ability to distinguish between PU signal and noise after detection - Robust against noise uncertainty	- High performance for low sample number - Ability to perform under low SNR region

V. CONCLUSION

In this paper, we described the basic sensing methods and their simulation results were discussed. From the results of the comparison, we can conclude that each method has its strengths and weaknesses. Energy detection is easy to implement and does not require any information about PU signal; however it is not able to distinguish between signal and noise. It has also a high false alarm. Matched filter sensing requires a perfect knowledge of PU signal, which is not practical, but has a good performance under low SNR . Nevertheless, autocorrelation based sensing is robust against noise uncertainty. Therefore, choosing one of these three sensing techniques depends on the SNR level, noise uncertainty of the transmission channel, and available information about the PU signal. In addition, using a dynamic threshold gives better sensing performance than when using a static threshold.

REFERENCES

- [1] H. Sun, A. Nallanathan, C. X. Wang, and Y. Chen, "Wideband spectrum sensing for cognitive radio networks: a survey," IEEE Wireless Commun. Mag., vol. 20, no. 2, pp. 74-81, April 2013.
- [2] N. Kaabouch and W. C. Hu, Handbook of Research on Software-Defined and Cognitive Radio Technologies for Dynamic Spectrum Management, IGI Global, Volumes I and II, October 2015.
- [3] H. Reyes, S. Subramaniam, and N. Kaabouch, "A bayesian network model of the bit error rate for cognitive radio networks," IEEE 16th Annual Wireless and Microwave Technology Conf. Cocoa Beach, vol., no., pp.1-4, April 2015.
- [4] W. Ejaz, N. U. Hasan, S. Lee, and H. S. Kim, "IBS: intelligent spectrum sensing scheme for cognitive radio networks," EURASIP Wireless Communication and Networking Journal, February 2013.
- [5] S. Subramaniam, H. Reyes, and N. Kaabouch, "Spectrum occupancy measurement: an autocorrelation based scanning technique using USRP," IEEE 16th Annual Wireless and Microwave Technology Conf. Cocoa Beach, vol., no., pp. 1-5, April 2015.
- [6] M. Akbari, M. M. Riahi, A. A. ElSaleh, I. Mahamod, "Improved soft fusion-based cooperative spectrum sensing using particle swarm optimization," IEICE Electronics Express, vol. 9, no. 6, pp. 436-442. 2012.
- [7] A. A. ElSaleh, M. Ismail, M. Akbari, M. M. Riahi, M. R. Manesh, S. A. Zavareh, "Minimizing the detection error of cognitive radio networks using particle swarm optimization," Int. Conf on Computer and Communication Engineering, vol., no., pp.877-881, July 2012.

- [8] H. Reyes, S. Subramaniam, and N. Kaabouch, "A spectrum sensing technique based on autocorrelation and euclidean distance and its comparison with energy detection for cognitive radio networks," Elsevier Computers & Electrical Engineering Journal, Elsevier, June 2015.
- [9] D. Cabric, A. Tkachenko, and R. W. Brodersen, "Spectrum sensing measurements of pilot, energy, and collaborative detection," IEEE Military Commun. Conf. Washington, vol., no., pp.1-7, October 2006.
- [10] F. Weidling, D. Datla, V. Petty, P. Krishnan, and G. J. Minden, "A framework for R.F. spectrum measurements and analysis," IEEE Int. Symp on New Frontiers in Dynamic Spectrum Access Networks. Baltimore, vol., no., pp. 573-576, November 2005.
- [11] L. Xiang, W. Bin, W. Hong, H. PinHan, B. Zhiqiang, and P. Lili, "Adaptive threshold control for energy detection based spectrum sensing in cognitive radios," IEEE Wireless Commun. Lett., vol. 1, pp. 448-451, July 2012.
- [12] C. H. Lim, "Adaptive energy detection for spectrum sensing in unknown white Gaussian noise," IET Commun., vol. 6, pp. 1884-1889, September 2012.
- [13] M. L. Benitez, and F. Casadevall, "Improved energy detection spectrum sensing for cognitive radio," IET Commun., vol. 6, pp. 785-796, May 2012.
- [14] J. Vartiainen, H. Sarvanko, J. Lehtomaki, M. Juntti, and M. Latvaaho, "Spectrum Sensing with LAD-based methods," IEEE 18th Int. Sym. on Personal, Indoor and Mobile Radio Communication, vol., no., pp. 1-5, September 2007.
- [15] Q. Zhi, C. Shuguang, A. H. Sayed, and H. V. Poor, "Wideband Spectrum Sensing in Cognitive Radio Networks," IEEE Int. Conf. Beijing, vol.,no., pp. 901-906, April 2008.
- [16] R. Tandra, and A. Sahai, "SNR walls for signal detection," IEEE Transl. J., vol. 2, no. 1, pp. 4, February 2008.
- [17] Z. Zhang, Q. Yang, L. Wang, and X. Zhou, "A novel hybrid matched filter structure for III 802.22 Standard," IEEE Asia Pacific Conf of Circuits and Systems. Kuala Lumpur, vol., no., pp. 652-655, December 2010.
- [18] Y. F. Sharkasi, D. McLernon, and M. Ghogho, "Robust spectrum sensing in the presence of carrier frequency offset and phase noise for cognitive radio," Wireless Telecommunications Sym. London, vol., no., pp. 1-5, April 2012.