



HAL
open science

Yet another p-adic hyperbolic disc

Antonin Guilloux

► **To cite this version:**

Antonin Guilloux. Yet another p-adic hyperbolic disc: Hilbert distance for p-adic fields. Groups, Geometry, and Dynamics, 2016, 10 (1), 10.4171/GGD/341 . hal-01370230

HAL Id: hal-01370230

<https://hal.science/hal-01370230>

Submitted on 4 Oct 2016

HAL is a multi-disciplinary open access archive for the deposit and dissemination of scientific research documents, whether they are published or not. The documents may come from teaching and research institutions in France or abroad, or from public or private research centers.

L'archive ouverte pluridisciplinaire **HAL**, est destinée au dépôt et à la diffusion de documents scientifiques de niveau recherche, publiés ou non, émanant des établissements d'enseignement et de recherche français ou étrangers, des laboratoires publics ou privés.

YET ANOTHER p -ADIC HYPERBOLIC DISC : HILBERT DISTANCE FOR p -ADIC FIELDS

ANTONIN GUILLOUX

We describe in this paper a geometric construction in the projective p -adic plane that gives, together with a suitable notion of p -adic convexity, some open subsets of $\mathbf{P}_2(\mathbf{Q}_p)$ naturally endowed with a “Hilbert” distance and a transitive action of $\mathrm{PGL}(2, \mathbf{Q}_p)$ by isometries. These open sets are natural analogues of the hyperbolic disc, more precisely of Klein’s projective model. But, unlike the real case, there is not only one such hyperbolic disc. Indeed, we find three of them if p is odd (and seven if $p = 2$).

Let us stress out that neither the usual notion of convexity nor that of connectedness as known for the real case are meaningful in the p -adic case. Thus, there will be a rephrasing game for the definitions of real convexity until we reach a formulation suitable for other local fields. It will lead us to a definition of p -adic convexity by duality. Although we will not recover the beautiful behaviour of real convexity, we will still be able to define the most important tool for our goals, namely the Hilbert distance.

We construct our analogues of the hyperbolic disc (once again, via the projective model of the hyperbolic plane) in a quite geometric, even naive, way. Our construction gives 2-dimensional objects over \mathbf{Q}_p . It is very different, in spirit and in facts, of Drinfeld p -adic hyperbolic plane [BC91]. The possible relations between the two objects remain still unexplored. Another object often viewed as an analogue of the hyperbolic disc is the tree of $\mathrm{PGL}(2, \mathbf{Q}_p)$ [Ser03]. We explore the relations between our discs and this tree, constructing a natural quasi-isometric projection from the discs to the tree. Eventually we explore the transformation groups of our discs. And, whereas the transformation group of the tree is huge, we prove that only $\mathrm{PGL}(2, \mathbf{Q}_p)$ acts on the discs preserving the convex structure.

CONTENTS

1.	Looking for a two-sheeted hyperboloid	2
1.1.	Special orthogonal groups and level sets	3
1.2.	The groups $\mathrm{Ad}(\mathrm{PSL}(2, \mathbf{k}))$ and $\mathrm{SO}(Q)$	5

1.3. Hyperboloids of one or two sheets	6
2. Projectivization and duality	9
2.1. The positive semi-cones	9
2.2. Duality	10
3. Convexity and Hilbert distance for open sets in the projective plane of local fields	11
3.1. Convexity in the setting of local fields	12
3.2. Hilbert distance, revisited	13
3.3. A generalized Hilbert distance	16
4. Geometry of the hyperbolic discs	18
4.1. The duals	18
4.2. Lines, short and long	19
4.3. The projective isometry group	20
4.4. The Hilbert distance on the discs	21
5. Links with the tree	23
6. The group of automorphisms	25
6.1. Multiplicative Hilbert distance	26
6.2. Every automorphism is projective	26
Conclusion	29
Annex : Proof of fact 1	29
References	31

1. LOOKING FOR A TWO-SHEETED HYPERBOLOID

In this section we follow the usual construction of the hyperboloid model for the hyperbolic space but over a local field \mathbf{k} . The point is to analyse the properties of squares in \mathbf{k} . We are mainly interested in the action of $\mathrm{PGL}(2, \mathbf{k})$ on \mathbf{k}^3 via the adjoint representation:

$$\mathrm{Ad} : \mathrm{PGL}(2, \mathbf{k}) \rightarrow \mathrm{SL}(3, \mathbf{k}).$$

It is an isomorphism with the group $\mathrm{SO}(Q)$, where Q denotes the quadratic form on \mathbf{k}^3 given by $Q(x, y, z) = xz - y^2$. This section describes the level surfaces of Q in $\mathbf{k}^3 \setminus \{0\}$. Each of them is a single $\mathrm{PGL}(2, k)$ -orbit (by Witt's theorem). We look at their decomposition into $\mathrm{PSL}(2, k)$ -orbits, like the two-sheeted hyperboloid in the real case. These level sets can be of one of the three following types:

- the isotropic cone, which is a finite union of $\mathrm{PSL}(2, \mathbf{k})$ -orbits,
- a single $\mathrm{PSL}(2, \mathbf{k})$ -orbit (a one-sheeted hyperboloid),
- the union of two $\mathrm{PSL}(2, \mathbf{k})$ -orbits (a two-sheeted hyperboloid).

The latter case is the most interesting for our concerns. A hyperbolic disc will be, in some sense, a positive cone on sheets of these hyperboloids (see section 2.2). We will achieve its construction in a fully elementary way. But, due to the lack of connectedness argument, some proofs rely on direct algebraic computations ; we will postpone it to an annex. Keeping in mind the real counterpart of these results should guide the intuition. We begin by recalling some general facts about orthogonal groups and gradually focus on the orthogonal group $SO(Q)$ described above.

1.1. Special orthogonal groups and level sets. Consider \mathbf{k} a field of characteristic different from 2, an integer $n \geq 1$, a $n + 1$ -dimensional \mathbf{k} -vector space V and a quadratic form q on V . Then Witt's theorem [O'M00, 42.F] implies that the special orthogonal group $SO(q)$ acts transitively on each level set of q in $V \setminus \{0\}$.

Consider the form $Q(x_0, \dots, x_n) = x_0x_n - x_1^2 - \dots - x_{n-1}^2$ on $V = \mathbf{k}^{n+1}$. The isotropic cone \mathcal{C} of Q , i.e. the set of vectors v with $Q(v) = 0$, decomposes into two orbits under the action of $SO(Q)$: the singleton $\{0\}$ and its complement.

Let us now assume moreover that \mathbf{k} has the following property: $x_1^2 + \dots + x_{n-1}^2$ is a non-zero square for any non-zero vector $(x_1, \dots, x_{n-1}) \in \mathbf{k}^{n-1} \setminus \{0\}$. This holds for any n if $\mathbf{k} = \mathbf{R}$ and for any field \mathbf{k} if $n = 2$. We prove then that the isotropic cone contains a positive semi-cone defined by the fact that x_0 is a square in \mathbf{k} ("positive" is an analogy with the real case in which the squares are the positive numbers). This semi-cone is stabilized by an explicit normal subgroup of $SO(Q)$ which is of finite index for any local field \mathbf{k} . The real case tells us a useful interpretation for this finite index subgroup: it becomes the connected component $SO^o(Q)$ - in the case $\mathbf{k} = \mathbf{R}$, the quadratic form Q has signature $(1, n)$. Let $(\mathbf{k}^*)^2$ be the set of squares (invertible) elements in \mathbf{k}^* and $\bar{\alpha} = \alpha(\mathbf{k}^*)^2$ the class modulo the squares of an element $\alpha \in \mathbf{k}^*$. We get the following proposition:

Proposition 1.1. *Consider the form Q over a field \mathbf{k} ($\text{char}(\mathbf{k}) \neq 2$) where $x_1^2 + \dots + x_{n-1}^2$ is a non-zero square for any non-zero vector $(x_1, \dots, x_{n-1}) \in \mathbf{k}^{n-1} \setminus \{0\}$. For any class $\bar{\alpha}$ in $\mathbf{k}^*/(\mathbf{k}^*)^2$, define the semi-cones:*

$$\mathcal{C}_{\bar{\alpha}} = \{(x_0, \dots, x_n) \in \mathcal{C} \setminus \{0\} \text{ such that } x_0 \text{ and } x_n \text{ belong to } \bar{\alpha} \cup \{0\}\}.$$

Then $\mathcal{C} \setminus \{0\}$ decomposes into the disjoint union of the semi-cones over the elements of $\mathbf{k}^/(\mathbf{k}^*)^2$. Moreover $SO(Q)$ acts by permutations on the set of semi-cones and we have an isomorphism*

$$SO(Q)/\text{Stab}(\mathcal{C}_{\bar{1}}) \simeq \mathbf{k}^*/(\mathbf{k}^*)^2.$$

Before proving the proposition, let us describe an avatar of Iwazawa decomposition of the group $\mathrm{SO}(Q)$. Let Q' be the quadratic form $x_1^2 + \dots + x_{n-1}^2$. Consider the three following subgroups of $\mathrm{SL}(n+1, \mathbf{k})$:

- $N^+ = \begin{pmatrix} 1 & 2^t w A & Q'(w) \\ 0 & A & w \\ 0 & 0 & 1 \end{pmatrix}$ for $A \in \mathrm{SO}(Q')$ and $w \in \mathbf{k}^{n-1}$.
- $N^- = \begin{pmatrix} 1 & 0 & 0 \\ v & B & 0 \\ Q'(v) & 2^t v B & 1 \end{pmatrix}$ for $B \in \mathrm{SO}(Q')$ and $v \in \mathbf{k}^{n-1}$.
- $H = \begin{pmatrix} x & 0 & 0 \\ 0 & Id & 0 \\ 0 & 0 & \frac{1}{x} \end{pmatrix}$ ($x \in \mathbf{k}^*$).

In the real case, the three following facts may be proven using geometric considerations. But elementary linear algebra leads to the same conclusion and works on any field.

Fact 1. • All three are subgroups of $\mathrm{SO}(Q)$ and H normalizes both N^+ and N^- .

- The subgroup N^+ is the stabilizer of $v_0 = \begin{pmatrix} 1 \\ 0 \\ \vdots \\ 0 \end{pmatrix}$ in $\mathrm{SO}(Q)$.
- The group $\mathrm{SO}(Q)$ decomposes as the product $N^- H N^+$.

With this fact, we are ready to proceed with the proof of the proposition.

Proof. First of all, we may remark that any non-zero isotropic element $v = (x_0, \dots, x_n)$ belongs to one of the semi-cones. Indeed, v being isotropic, we have the equation

$$x_0 x_n = Q'(x_1, \dots, x_{n-1}).$$

We assumed that Q' takes only square values, hence $x_0 x_n$ is either zero if $(x_1, \dots, x_{n-1}) = 0$ or a non-zero square. In the first case, as $v \neq 0$, we get that $x_0 \neq 0$ or $x_n \neq 0$. In the second case, the class \bar{x}_0 and \bar{x}_n are the same, as $x_0 x_n \in (\mathbf{k}^*)^2$. In any case, there is a unique class $\bar{\alpha}$ modulo square such that $\bar{\alpha} \cup \{0\}$ contains both x_0 and x_n . This proves the first part of the proposition.

To prove the second point, let us remark that both N^+ and N^- stabilize each semi-cone. Let us justify this for N^+ by considering an

arbitrary element

$$n = \begin{pmatrix} 1 & 2^t w A & Q'(w) \\ 0 & A & w \\ 0 & 0 & 1 \end{pmatrix}.$$

Consider an element $v = \begin{pmatrix} x_0 \\ \vdots \\ x_n \end{pmatrix}$ in $\mathcal{C} \setminus \{0\}$. If $x_0 \neq 0$ then v belongs to

$\mathcal{C}_{\overline{x_0}}$. And $n(v)$ has the same first coordinate as v . So it also belongs to $\mathcal{C}_{\overline{x_0}}$. Otherwise, x_0 vanishes and so do all the x_1, \dots, x_{n-1} (as $Q(v) = 0$). In this case, v belongs to $\mathcal{C}_{\overline{x_n}}$, and $n(v)$ is the vector:

$$n(v) = \begin{pmatrix} Q'(w)x_n \\ x_n w \\ x_n \end{pmatrix}.$$

It still belongs to $\mathcal{C}_{\overline{x_n}}$.

The isomorphism $\mathrm{SO}(Q)/\mathrm{Stab}(\mathcal{C}_{\overline{1}}) \simeq \mathbf{k}^*/(\mathbf{k}^*)^2$ is now easily obtained. Indeed, using the previous fact, we may write:

$$\mathrm{SO}(Q)/\mathrm{Stab}(\mathcal{C}_{\overline{1}}) = HN^-N^+/\mathrm{Stab}(\mathcal{C}_{\overline{1}}).$$

The product N^-N^+ is contained in $\mathrm{Stab}(\mathcal{C}_{\overline{1}})$. Hence we have a first isomorphism:

$$\mathrm{SO}(Q)/\mathrm{Stab}(\mathcal{C}_{\overline{1}}) \simeq H/\mathrm{Stab}_H(\mathcal{C}_{\overline{1}}).$$

And the stabilizer in H of the semi-cone $\mathcal{C}_{\overline{1}}$ is clearly the subgroup:

$$\begin{pmatrix} x & 0 & 0 \\ 0 & \mathrm{Id} & 0 \\ 0 & 0 & \frac{1}{x} \end{pmatrix} \text{ for } x \in (\mathbf{k}^*)^2.$$

Hence the quotient $H/\mathrm{Stab}_H(\mathcal{C}_{\overline{1}})$ is isomorphic to $\mathbf{k}^*/(\mathbf{k}^*)^2$ □

1.2. The groups $\mathrm{Ad}(\mathrm{PSL}(2, \mathbf{k}))$ and $\mathrm{SO}(Q)$. We focus now our attention on the case $n = 2$. We note $Q(x, y, z) = xz - y^2$. In this case, the adjoint representation is an isomorphism between $\mathrm{PGL}(2, \mathbf{k})$ and $\mathrm{SO}(Q)$. The determinant modulo squares gives an isomorphism:

$$\mathrm{PGL}(2, \mathbf{k})/\mathrm{PSL}(2, \mathbf{k}) \xrightarrow{\sim} \mathbf{k}^*/(\mathbf{k}^*)^2.$$

Under the adjoint representation, this isomorphism is exactly the same as the one of the proposition 1.1. It translates into an isomorphism between the quotient $\mathrm{SO}(Q)/\mathrm{Ad}(\mathrm{PSL}(2, \mathbf{k}))$ and $\mathbf{k}^*/(\mathbf{k}^*)^2$. For each

class $\bar{\alpha} \in \mathbf{k}^*/(\mathbf{k}^*)^2$ represented by some $\alpha \in \mathbf{k}^*$, the following diagonal matrix belongs to the corresponding class in $\mathrm{SO}(Q)/\mathrm{Ad}(\mathrm{PSL}(2, \mathbf{k}))$:

$$d_\alpha = \begin{pmatrix} \alpha & & \\ & 1 & \\ & & \alpha^{-1} \end{pmatrix}.$$

We denote by $d_{\bar{\alpha}}$ the class $d_\alpha \mathrm{Ad}(\mathrm{PSL}(2, \mathbf{k}))$ in $\mathrm{SO}(Q)/\mathrm{Ad}(\mathrm{PSL}(2, \mathbf{k}))$. The group $\mathrm{Ad}(\mathrm{PSL}(2, \mathbf{k}))$ thus identifies with the stabilizer of the semi-cones.

One may describe more precisely the case of \mathbf{k} a non-archimedean local field of characteristic $\neq 2$. Recall that the group $\mathbf{k}^*/(\mathbf{k}^*)^2$ is of order 4 and isomorphic to $(\mathbf{Z}/2\mathbf{Z})^2$ if the characteristic p of the residual field is odd. So there are 4 semi-cones in general. For characteristic 0 and residual characteristic 2, the situation is more complicated [O'M00]. Consider the case \mathbf{Q}_2 : then there are 8 classes modulo squares, and the group is isomorphic to $(\mathbf{Z}/2\mathbf{Z})^3$. So we have 8 semi-cones for \mathbf{Q}_2 .

We have decomposed the isotropic cone into semi-cones. We may now look at the hyperboloids, i.e. the decomposition of the other level sets of Q under the action of the subgroup $\mathrm{Stab}(\mathcal{C}_{\bar{1}})$. Shall we recover the hyperboloids of one or two sheets? Recall that we are looking for a model of the hyperbolic disc. In the real case, the first step is to see the two-sheeted hyperboloids. From now on, the field \mathbf{k} is a non-archimedean local field of characteristic different from 2.

1.3. Hyperboloids of one or two sheets. Throughout this section, \mathbf{k} is a non-archimedean local field of characteristic different from 2.

The homotheties of \mathbf{k}^3 change the value of Q by a square. So, up to homotheties, there are $\mathrm{Card}(\mathbf{k}^*/(\mathbf{k}^*)^2)$ level surfaces for Q different from the isotropic cone. Let $\bar{\alpha}$ be a class in $\mathbf{k}^*/(\mathbf{k}^*)^2$ and α an element of $\bar{\alpha}$. Define

$$v_\alpha = \begin{pmatrix} \alpha \\ 0 \\ 1 \end{pmatrix}.$$

Then we have $Q(v_\alpha) = \alpha$. We want to understand the stabilizer in $\mathrm{SO}(Q)$ of v_α , in order to decompose the hyperboloid $\mathrm{SO}(Q).v_\alpha$ into sheets. The situation is as follow:

Proposition 1.2. *Let $\bar{\alpha}$ be a class in $\mathbf{k}^*/(\mathbf{k}^*)^2$ and α an element of $\bar{\alpha}$.*

- (1) *If -1 belongs to $\bar{\alpha}$, then $\mathrm{SO}(Q).v_\alpha$ is a one-sheeted hyperboloid, i.e.*

$$\mathrm{SO}(Q).v_\alpha = \mathrm{Ad}(\mathrm{PSL}(2, \mathbf{k})).v_\alpha;$$

- (2) else $\mathrm{SO}(Q).v_\alpha$ is a two-sheeted hyperboloid, i.e. $\mathrm{SO}(Q).v_\alpha$ decomposes in two distinct $\mathrm{PSL}(2, \mathbf{k})$ -orbits.

Proof. First case: -1 belongs to $\bar{\alpha}$: then the orbit $\mathrm{SO}(Q).v_\alpha$ is homothetic to the orbit $\mathrm{SO}(Q).v_{-1}$. But we have $Q(-1, 0, 1) = Q(0, 1, 0)$. Witt's theorem implies that the orbit $\mathrm{SO}(Q).v_{-1}$ coincide with the orbit

$$\mathrm{SO}(Q). \begin{pmatrix} 0 \\ 1 \\ 0 \end{pmatrix}.$$

One may see that this latter orbit is a one-sheeted hyperboloid: the group

$$\mathrm{Stab} \begin{pmatrix} 0 \\ 1 \\ 0 \end{pmatrix}$$

contains all the matrices

$$d_\beta = \begin{pmatrix} \beta & & \\ & 1 & \\ & & \beta^{-1} \end{pmatrix}, \text{ for } \beta \in \mathbf{k}^*.$$

Hence we have

$$\mathrm{Ad}(\mathrm{PSL}(2, \mathbf{k})) \mathrm{Stab}(0, 1, 0) = \mathrm{SO}(Q),$$

which proves that

$$\mathrm{SO}(Q).(0, 1, 0) = \mathrm{Ad}(\mathrm{PSL}(2, \mathbf{k})).(0, 1, 0).$$

Second case: -1 does not belong to $\bar{\alpha}$: then the stabilizer of v_α is the orthogonal group of Q restricted to v_α^\perp . The form $Q|_{v_\alpha^\perp}$ is equivalent to the form $Q_\alpha(u, v) = -\alpha u^2 - v^2$. The latter is anisotropic: $Q(u, v) = 0$ would imply $\alpha = -\frac{v^2}{u^2}$, so -1 would belong to $\bar{\alpha}$. In order to understand $\mathrm{Ad}(\mathrm{PSL}(2, \mathbf{k})) \mathrm{Stab}(v_\alpha)$, we shall understand how the action of $\mathrm{Stab}(v_\alpha)$ permutes the semi-cones.

Let P be the affine plane $v_\alpha^\perp + \frac{1}{\alpha}v_\alpha$. The plane P is invariant under $\mathrm{Stab}(v_\alpha)$ and has equation:

$$\begin{pmatrix} a \\ b \\ c \end{pmatrix} \in P \text{ iff } \alpha c + a = 1.$$

Look at the intersection $P \cap \mathcal{C}$ of P and the isotropic cone. The action of $\mathrm{Stab}(v_\alpha)$ on \mathcal{C} will be transitive on the component of $P \cap \mathcal{C}$. So we

compute the set of $\bar{\beta} \in \mathbf{k}^*/(\mathbf{k}^*)^2$ such that P intersects $\mathcal{C}_{\bar{\beta}}$. A vector ${}^t(a, b, c)$ belongs to $P \cap \mathcal{C}$ if and only if its entries satisfy:

$$\begin{cases} \alpha c + a &= 1 \\ ac &= b^2 \end{cases}.$$

We are only interested in the common class $\bar{\beta}$ modulo squares of a and c (in order to determine the semi-cone $\mathcal{C}_{\bar{\beta}}$ the solution belongs to). The $\bar{\beta}$'s which are solutions are exactly those verifying:

$$1 \in \bar{\beta} + \alpha\bar{\beta}.$$

As $-1 \notin \bar{\alpha}$, this implies that $1 \in \bar{\beta}$ or $1 \in \alpha\bar{\beta}$. So those $\bar{\beta}$ are exactly the elements of:

$$\{[\alpha + y^2] \in \mathbf{k}^*/(\mathbf{k}^*)^2 \text{ for } y \in \mathbf{k}^*\}.$$

In other terms, this set is the norm group $\mathcal{N}_{[\mathbf{k}[\sqrt{-\alpha}];\mathbf{k}]}$ (modulo squares) of the quadratic extension $\mathbf{k}[\sqrt{-\alpha}]$ (see [O'M00]).

We know [O'M00, 63:13a] that this set is always an index 2 subgroup of $\mathbf{k}^*/(\mathbf{k}^*)^2$. As said before, the subgroup $\text{Stab}(v_\alpha)$ permutes the $\mathcal{C}_{\bar{\beta}}$'s which intersect P (by Witt's theorem). Hence it has two distinct orbits among the $\mathcal{C}_{\bar{\beta}}$'s, and the orbit of v_α is a two-sheeted hyperboloid. \square

Remark. For the very last point in the above proof, and $\mathbf{k} = \mathbf{Q}_p$, instead of referring to [O'M00], one may alternatively check the following without difficulties:

- P always intersects the semi-cone \mathcal{C}_1 associated to the class of squares,
- if p is odd, and $\bar{\alpha}$ has an even valuation in \mathbf{k} , P intersects the two $\mathcal{C}_{\bar{\beta}}$'s for $\bar{\beta}$ of even valuation,
- if p is odd, and $\bar{\alpha}$ has an odd valuation, P intersects \mathcal{C}_1 and $\mathcal{C}_{\bar{\alpha}}$,
- if $\mathbf{k} = \mathbf{Q}_2$, one verifies for each class that P intersects four semi-cones. For example, in \mathbf{Q}_2 , if $\bar{\alpha}$ is the class of squares, P intersects $\mathcal{C}_{\bar{\beta}}$ for $\bar{\beta}$ equals $\bar{1}$, $\bar{2}$, $\bar{5}$ and $\bar{10}$.

Another way to state the previous proposition is that for each subgroup \bar{K} of index 2 in $\mathbf{k}^*/(\mathbf{k}^*)^2$, there is a vector v_α in \mathbf{k}^3 such that the group $\text{Stab}(v_\alpha) \text{Ad}(\text{PSL}(2, \mathbf{k})) / \text{Ad}(\text{PSL}(2, \mathbf{k}))$ is isomorphic to \bar{K} . Those subgroups \bar{K} are the norm groups (modulo squares) of a quadratic extension of \mathbf{k} . We get the following corollary:

Corollary 1. *Let \bar{K} be a subgroup of index 2 in $\mathbf{k}^*/(\mathbf{k}^*)^2$.*

There is a unique $\bar{\alpha}$ in $\mathbf{k}^/(\mathbf{k}^*)^2$ such that \bar{K} is the set $\{[\alpha + y^2] \in \mathbf{k}^*/(\mathbf{k}^*)^2 \text{ for } y \in \mathbf{k}^*\}$ for any α in $\bar{\alpha}$. The group \bar{K} is equivalently described as the norm group (modulo squares) of the extension $\mathbf{k}[\sqrt{-\alpha}]$.*

Moreover for every α in this $\bar{\alpha}$, the orbit $\text{SO}(Q).v_\alpha$ is a two-sheeted hyperboloid.

We prefer to work with subgroups of \mathbf{k}^* and we hereafter denote by $K_{\bar{\alpha}}$ the subgroup of \mathbf{k}^* such that, for any α in $\bar{\alpha}$, we have:

$$K_{\bar{\alpha}} = \{\alpha x^2 + y^2 \in \mathbf{k}^* \text{ for } x, y \in \mathbf{k}^*\}$$

2. PROJECTIVIZATION AND DUALITY

A crucial point for the (real) projective model of the hyperbolic disc consists in the fact that the positive semi-cone over one sheet of the two-sheeted hyperboloid is a convex cone. It allows the construction of the natural Hilbert distance for an open convex subset of the sphere which turns out to be exactly the hyperbolic distance.

2.1. The positive semi-cones. We try here to understand the “positive semi-cone” over one of the previously defined sheets. In other terms, we will projectivize the geometry of the previous section, but only under action of "positive" homotheties, i.e. with ratio in $K_{\bar{\alpha}}$. We fix an $\bar{\alpha}$ in $\mathbf{k}^*/(\mathbf{k}^*)^2$ such that -1 does not belong to $\bar{\alpha}$. We are now interested in the orbits of $K_{\bar{\alpha}} \text{Ad}(\text{PSL}(2, \mathbf{k}))$ (the positive semi-cones) among the set

$$\{v \in \mathbf{k}^3 \text{ such that } Q(v) \in \bar{\alpha}\}.$$

Once again, we will study stabilizers of points and indices of subgroups to build up the geometry of the situation.

The group $\mathbf{k}^* \text{SO}(Q)$ acts transitively on the latter set. The index of $K_{\bar{\alpha}} \text{Ad}(\text{PSL}(2, \mathbf{k}))$ in $\mathbf{k}^* \text{SO}(Q)$ is 8 for odd residual characteristic (16 if $k = \mathbf{Q}_2$). Consider the usual vector

$$v_\alpha = \begin{pmatrix} \alpha \\ 0 \\ 1 \end{pmatrix}$$

for some α in $\bar{\alpha}$. Of course we have $Q(v_\alpha) = \alpha \in \bar{\alpha}$. And the stabilizer of v_α in $\mathbf{k}^* \text{SO}(Q)$ is generated by its stabilizer in $\text{SO}(Q)$ and the diagonal matrix

$$d = \begin{pmatrix} 1 & & \\ & -1 & \\ & & 1 \end{pmatrix} = -d_{-1}.$$

We therefore get the following lemma:

Lemma 2.1. *Consider the set*

$$\{v \in \mathbf{k}^3 \text{ such that } Q(v) \in \bar{\alpha}\}.$$

The number of disjoint $K_{\bar{\alpha}} \text{Ad}(\text{PSL}(2, \mathbf{k}))$ -orbits it decomposes into is:

- 4 orbits if -1 belongs to $K_{\bar{\alpha}}$.
- 2 orbits if -1 does not belong to $K_{\bar{\alpha}}$.

Proof. We have seen that $\text{Ad}(\text{PSL}(2, \mathbf{k})) \text{Stab}(v_\alpha)$ is of index 2 in $\text{SO}(Q)$. So the index of the group

$$K_{\bar{\alpha}} \text{Ad}(\text{PSL}(2, \mathbf{k})) \text{Stab}(v_\alpha)$$

in $k^* \text{SO}(Q)$ is 4 or 2 depending on whether d belongs to $K_{\bar{\alpha}} \text{Ad}(\text{PSL}(2, \mathbf{k}))$ or not. Now, -1 belongs to $K_{\bar{\alpha}}$ if and only if d belongs to $K_{\bar{\alpha}} \text{Ad}(\text{PSL}(2, \mathbf{k}))$. \square

As we are interested in the semi-cones, we will need an ad-hoc sphere, rather than the projective space:

Definition 2.1. For $\bar{\alpha}$ in $\mathbf{k}^*/(\mathbf{k}^*)^2$ such that -1 does not belong to $\bar{\alpha}$, the $\bar{\alpha}$ -sphere is:

$$\mathbf{S}_{\bar{\alpha}} = (\mathbf{k}^3 \setminus \{0\})/K_{\bar{\alpha}}.$$

Of course, the $\bar{\alpha}$ -sphere is a 2-covering of the projective space.

2.2. Duality. We are now prepared to deal with convexity properties. Convexity, in the usual real sense, may be interpreted as a positivity condition: a subset of the plane is convex if it is an intersection of half-spaces; or equivalently if it is the set of points which take *positive* values on a set of affine forms. We will here follow this idea, translating "positive" into "belonging to $K_{\bar{\alpha}}$ ".

The polar form of Q is the bilinear form B defined by:

$$B(v, v') = \frac{1}{2}[Q(v + v') - Q(v - v')].$$

Recall that $\mathcal{C}_{\bar{1}}$ is the semi-cone associated to the class of squares:

$$\mathcal{C}_{\bar{1}} = \{(a, b, c) \in \mathbf{k}^3 \setminus \{0\} \text{ such that } ac = b^2 \text{ and } a \text{ and } c \text{ are squares}\}$$

First of all, for any α in $\bar{\alpha}$, and $w \in \mathcal{C}_{\bar{1}}$, one checks that $B(v_\alpha, w)$ belongs to $K_{\bar{\alpha}}$. Using the action of $K_{\bar{\alpha}} \cdot \text{Ad}(\text{PSL}(2, \mathbf{k}))$, we even get the following duality phenomenon:

$$\forall \alpha \in \bar{\alpha}, \forall v \in K_{\bar{\alpha}} \text{Ad}(\text{PSL}(2, \mathbf{k})) \cdot v_\alpha \text{ and } \forall w \in \mathcal{C}_{\bar{1}}, \text{ we have } B(v, w) \in K_{\bar{\alpha}}.$$

The hope for a possible theory of p -adic convexity raises up with the following theorem:

Theorem 2.2. *Let $\bar{\alpha}$ be an element of $\mathbf{k}^*/(\mathbf{k}^*)^2$ such that $-1 \notin \bar{\alpha}$.*

We have equality between the two following sets:

- (1) $\{K_{\bar{\alpha}} \text{Ad}(\text{PSL}(2, \mathbf{k})) \cdot v_\alpha \text{ for } \alpha \in \bar{\alpha}\}$,
- (2) $\mathcal{H}_{\bar{\alpha}} = \{v \in \mathbf{k}^3 \text{ such that for all } w \in \mathcal{C}_{\bar{1}}, \text{ we have } B(v, w) \in K_{\bar{\alpha}}\}$.

$\mathcal{H}_{\bar{\alpha}}$ is the union of one or two $K_{\bar{\alpha}} \text{Ad}(\text{PSL}(2, \mathbf{Q}_p))$ -orbits: two if -1 belongs to $K_{\bar{\alpha}}$, else one.

Remark. The projectivization of $\mathcal{H}_{\bar{\alpha}}$ will be our hyperbolic discs. One should not be disappointed by the possibility for them to be the union of two distinct $K_{\bar{\alpha}} \text{Ad}(\text{PSL}(2, \mathbf{k}))$ -orbits. This will even be our preferred case later on. Let us recall, maybe in a yet cryptic way, that the tree of $\text{PSL}(2, \mathbf{Q}_p)$ is the union of two disjoint orbits under $\text{PSL}(2, \mathbf{Q}_p)$.

Proof. The set $\{v \in \mathbf{k}^3 \text{ such that } Q(v) \in \bar{\alpha}\}$ is a single $\mathbf{k}^* \text{SO}(Q)$ -orbit. It splits into $\mathcal{H}_{\bar{\alpha}}$ and its complementary, which is also the image of $\mathcal{H}_{\bar{\alpha}}$ under the following matrix, for any y not belonging to $K_{\bar{\alpha}}$:

$$d_y = \begin{pmatrix} y & & \\ & 1 & \\ & & y^{-1} \end{pmatrix}.$$

Both of them are $K_{\bar{\alpha}} \text{Ad}(\text{PSL}(2, \mathbf{k}))$ -invariant. Moreover, as d_y normalizes $\text{Ad}(\text{PSL}(2, \mathbf{k}))$, they decompose in the same number of orbits under $K_{\bar{\alpha}} \text{Ad}(\text{PSL}(2, \mathbf{k}))$. The previous lemma 2.1 implies that $\mathcal{H}_{\bar{\alpha}}$ splits into two orbits if -1 belongs to $K_{\bar{\alpha}}$, else is a single orbit. \square

We found our hyperbolic discs ! This section ends with the following definition:

Definition 2.2. Let $\bar{\alpha}$ be an element of $\mathbf{k}^*/(\mathbf{k}^*)^2$ such that $-1 \notin \bar{\alpha}$. The $\bar{\alpha}$ -hyperbolic disc, denoted by $\mathbf{D}_{\bar{\alpha}}$, is the projection of $\mathcal{H}_{\bar{\alpha}}$ to the $\bar{\alpha}$ -sphere $\mathbf{S}_{\bar{\alpha}}$.

Those are the main characters of our paper. We will endow them with a distance and study their geometry. Let us stress out that for each field \mathbf{k} one find several hyperbolic discs: one for each class $\bar{\alpha}$ not containing -1 . There are 3 of them if the residual characteristic is odd and 7 for \mathbf{Q}_2 . And they are different, in the sense that the action of $\text{PSL}(2, \mathbf{k})$ on them is different. It may have one or two orbits and the stabilizer of a point are not conjugated for different classes $\bar{\alpha}$.

3. CONVEXITY AND HILBERT DISTANCE FOR OPEN SETS IN THE PROJECTIVE PLANE OF LOCAL FIELDS

The present section tries to lay down the basis of a Hilbert geometry over local fields. We first define a notion of convexity inspired by (and applicable to) the hyperbolic discs just constructed ; then a natural distance for these convex sets (the Hilbert distance).

Hilbert geometries [Hil95, dlH93, Bea99, Ver05] are fascinating and well-studied objects. We deliberately focus in this text on the example of the hyperbolic discs and use the convexity as a way to define

an interesting structure on our $\mathbf{D}_{\bar{\alpha}}$. We nevertheless think that the existence of these examples gives a good motivation for studying in a more systematic way the hereafter proposed notion of convexity. As another example of a convex set and its Hilbert distance we describe the triangle.

3.1. Convexity in the setting of local fields. We propose here a definition for convexity in the setting of local fields, hoping it will prove convenient and useful. We choose to work in duality, copying the fact that a convex set in \mathbf{R}^2 may be defined as the positive side of a set of affine forms. This definition is also motivated by our example of hyperbolic discs and by the possibility (to be seen afterwards) to construct a Hilbert distance.

Fix a local field \mathbf{k} and H a subgroup of finite index in the multiplicative group \mathbf{k}^* . Choose an integer $n \geq 2$, V a $n + 1$ -dimensional \mathbf{k} -vector space and define the H -sphere of V :

$$\mathbf{S}_H(V) = (V \setminus \{0\})/H.$$

It is a finite covering of the projective space $\mathbf{P}(V)$. The H -spheres of V and its dual V^* are naturally in duality: for $a \in \mathbf{S}_H(V)$ and $b \in \mathbf{S}_H(V^*)$ the class $b(a)$ is well-defined in \mathbf{k}^*/H . We define the (H -)dual Ω° of a set Ω in $\mathbf{S}_H(V)$ as the set of forms taking values in H on points of Ω :

$$\Omega^\circ = \{f \in \mathbf{S}_H(V^*) \text{ such that } \forall x \in \Omega, f(x) \in H\}.$$

We may now take the bidual $(\Omega^\circ)^\circ$. By definition, Ω is included in its bidual $(\Omega^\circ)^\circ$.

Definition 3.1. A subset Ω of $\mathbf{S}_H(V)$ is *H-convex* if Ω coincides with its bidual $(\Omega^\circ)^\circ$.

One can alternatively say that Ω is *H-convex* if there is some set Ω' in $\mathbf{S}_H(V^*)$ such that Ω is the H -side of Ω' : Ω is the set of ω such that for all $\omega' \in \Omega'$, we have $\omega'(\omega) \in H$. Indeed, one take $\Omega' = \Omega^\circ$.

The previous definition immediately leads to the definition of a convex hull:

Definition 3.2. The *convex hull* of a subset C of $\mathbf{S}_H(V)$ is the subset $\text{Hull}(C) = (C^\circ)^\circ$ of $\mathbf{S}_H(V)$.

Observe that $\text{Hull}(C)$ is the smallest of $\mathbf{S}_H(V)$ containing C .

When $\mathbf{k} = \mathbf{R}$ and $H = \mathbf{R}_{>0}$, definitions 3.1 and 3.2 coincide with the usual definitions. When \mathbf{k} is any field and $H = \mathbf{k}^*$, the projection to the H -sphere of the complement to a finite union of hyperplanes is an example of convex set. And, in view of our theorem 2.2, the hyperbolic discs $\mathbf{D}_{\bar{\alpha}}$ we just defined are $K_{\bar{\alpha}}$ -convex.

Any polytope will be H -convex: take a finite set of forms and their common H -side. One may describe more precisely the triangle: for any local field \mathbf{k} and a finite index subgroup H of \mathbf{k}^* , we define the H -triangle \mathbf{T}_H : it is the set of points $[x, y, z]$ in the H -sphere whose three coordinates are in H . Then \mathbf{T}_H is the dual of set $\{e_1, e_2, e_3\}$ of the three coordinates forms.

3.2. Hilbert distance, revisited. This subsection is devoted to a rephrasing of the Hilbert distance in the real case. We want to redefine it without any mention to the ordering on \mathbf{R} . This is possible, even if the definition proposed might seem highly artificial for this real case. We will then move on in the next subsection to other fields, trying to transpose our new definition.

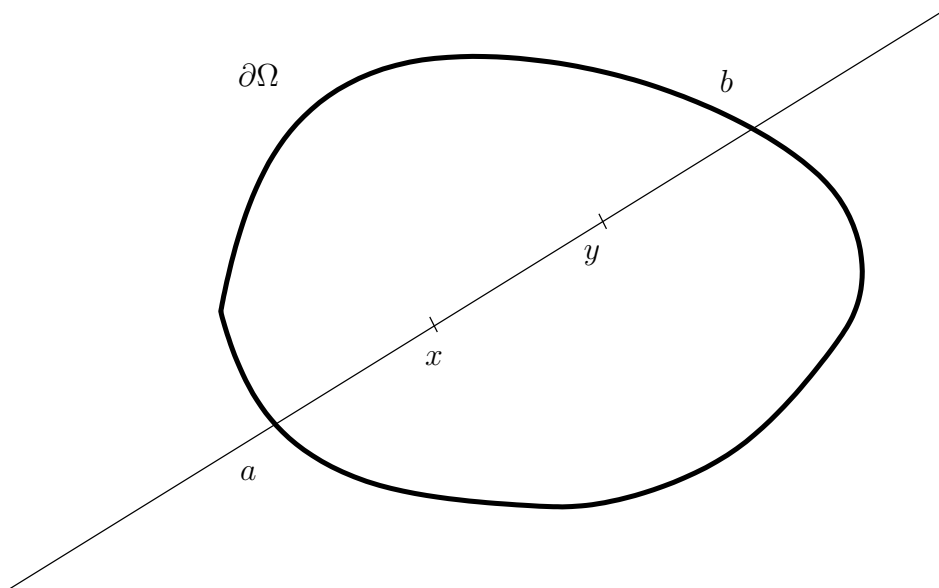


FIGURE 1. The Hilbert distance on Ω

We fix here an open, relatively compact and convex set Ω in the space \mathbf{R}^n and take $V = \mathbf{R}^{n+1}$, $H = \mathbf{R}_{>0}$. Via the adjunction of an hyperplane at infinity to \mathbf{R}^n , Ω becomes an open and proper convex set in the projective space $\mathbf{P}(V)$. So we have a convex lift (still called Ω) in the (usual) sphere. The Hilbert distance is classically defined in the following way:

for x and y in Ω , let a and b be the intersections between the line (xy) and the frontier $\partial\Omega$ of Ω , such that a, x, y, b are in this order on the line (xy) (see figure 1). Consider (noting zt the distance between

two points z and t):

$$D_{\Omega}(x, y) = [a, b, x, y] = \frac{ay}{ax} \frac{bx}{by}$$

and take its logarithm:

$$d_{\Omega}(x, y) = \ln([a, b, x, y]) = \ln\left(\frac{ay}{ax} \frac{bx}{by}\right).$$

It is well known that d_{Ω} is a distance [Hil95, Bea99]. The only point necessitating a proof is the triangular inequality. Moreover, it is invariant under projective transformation. Once again, we will not get further into the theory of Hilbert distance. We just want to define it in another way.

The first problem of this definition for other fields than \mathbf{R} is the word "boundary". In totally disconnected fields such boundaries tend to be void. We prefer to use the duality. So if φ and φ' belong to V^* , x and x' belong to V with neither $\varphi(x)$ nor $\varphi'(x')$ null, we note:

$$[\varphi, \varphi', x, x'] = \frac{\varphi(x')}{\varphi(x)} \frac{\varphi'(x)}{\varphi'(x')}$$

This formula is invariant under homothety on V or V^* , and under the action of $\text{GL}(V)$ conjointly on V and V^* .

Lemma 3.1. *Let Ω be an open proper convex set in the sphere, Ω° be its dual. Then we have, for all x and y in Ω :*

$$D_{\Omega}(x, y) = \max_{\varphi, \varphi' \in \Omega^{\circ}} [\varphi, \varphi', x, y]$$

So the Hilbert distance is the logarithm of this maximum.

Proof. Consider a' (resp. b') the intersection point between $\ker(\varphi)$ (resp. $\ker(\varphi')$) and the line (xy) . By convexity, and the fact that $\varphi \in \Omega^{\circ}$, a' and b' do not belong to Ω . And the theorem of Thales implies that $\frac{\varphi(x)}{\varphi(y)}$ equals $\frac{a'-x}{a'-y}$ (see figure 2) and the same with φ' and b' . Hence we get the equality between $[\varphi, \varphi', x, y]$ and $[a', b', x, y]$. The maximum of the latter is attained for $a' = a$ and $b' = b$, i.e. $\ker(\varphi)$ a supporting hyperplane of Ω through a , and $\ker(\varphi')$ through b . \square

At this point we do not mention $\partial\Omega$ any more, which is the first step. But we use the notion of maximum, unavailable in other fields. The following step is given by this lemma:

Lemma 3.2. *Let Ω be an open proper convex set in the sphere, Ω° be its dual. Then we have, for all x and y in Ω :*

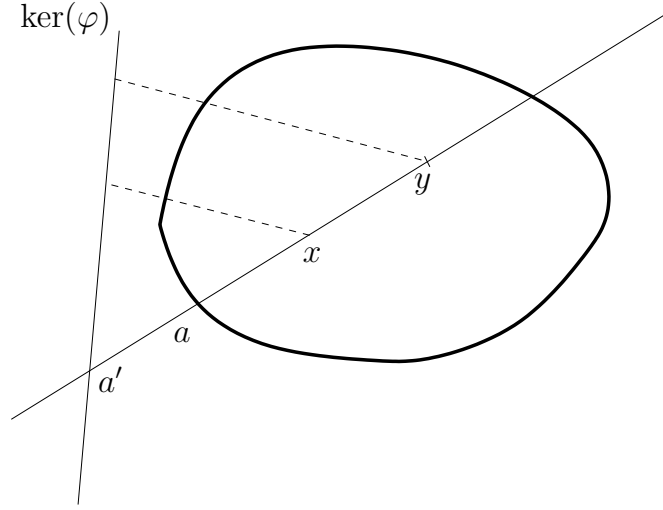


FIGURE 2. Rewriting the Hilbert distance

$$\{[\varphi, \varphi', x, y] \text{ for } \varphi, \varphi' \in \Omega^\circ\} = [D_\Omega(x, y)^{-1}, D_\Omega(x, y)].$$

Proof. First of all, we check that $[\varphi, \varphi', x, y] = [\varphi', \varphi, x, y]^{-1}$, so the first set contains $D_\Omega(x, y)$ (its maximum by the previous lemma) and $D_\Omega(x, y)^{-1}$ and is contained in the interval $[D_\Omega(x, y)^{-1}, D_\Omega(x, y)]$. Now Ω° is convex hence connected. We conclude by continuity. \square

We may now redefine the Hilbert distance via the Haar measure on \mathbf{R}^* . Choose the Haar measure μ on \mathbf{R}^* defined by the following, for $t > 1$:

$$\mu[t^{-1}, t] = \ln(t).$$

Then, the previous lemma yields immediately:

Proposition 3.3. *Let Ω be an open proper convex set in the sphere, Ω° be its dual. Then the distance $d_\Omega(x, y)$ is given by:*

$$d_\Omega(x, y) = \mu(\{[\varphi, \varphi', x, y] \text{ for } \varphi, \varphi' \in \Omega^\circ\}).$$

We have reached our goal: the latter number may be defined on any field and recovers the Hilbert distance in the real case.

Remark. In this form, the triangular inequality becomes easy, once we check that (with obvious notation) $[\varphi, \varphi', x, y] = [\varphi, \varphi', x, z][\varphi, \varphi', z, y]$ (see lemma 3.5). Easy indeed, but one still needs to use some properties of the real numbers, e.g. an ordering. This will be a further problem.

3.3. A generalized Hilbert distance. We now come back to a more general situation: let \mathbf{k} be \mathbf{R} or some non-archimedean local fields \mathbf{k} (of characteristic different from 2) and $|\cdot|$ its norm. Let H be a finite index subgroup of \mathbf{k}^* and V an $n + 1$ -dimensional \mathbf{k} -vector space. Fix a Haar measure μ on \mathbf{k}^* . We define a notion of symmetric ball:

Definition 3.3. The symmetric ball of radius r is the set

$$\{x \in \mathbf{k} \text{ such that } |x - 1| \leq r \text{ and } |x^{-1} - 1| \leq r\}.$$

We may also define the notion of proper convex set, extending the notion of properness in the real case:

Definition 3.4. Let Ω be a H -convex set in $S_H(V)$. The set Ω is proper if the intersection $\bigcap_{\varphi \in \Omega^\circ} \ker(\varphi)$ equals $\{0\}$.

We are now able to define a Hilbert distance on proper convex sets.

Theorem 3.4. *Let Ω be an open and proper H -convex set in $S_H(V)$, Ω° be its dual. For x, y in Ω , define $d_\Omega(x, y)$ as the measure for μ of the smallest symmetric ball containing $\{[\varphi, \varphi', x, y]$ for $\varphi, \varphi' \in \Omega^\circ\}$.*

Then d_Ω is a distance on Ω .

Proof. For this proof, we note $B_\Omega(x, y)$ the smallest symmetric ball containing the set $\{[\varphi, \varphi', x, y]$ for $\varphi, \varphi' \in \Omega^\circ\}$.

First of all, if $x \in \Omega$, we have $d_\Omega(x, x) = \mu(\{1\}) = 0$. Moreover, if $x \neq y$ are in Ω , fix X and Y some representatives in V (recall that Ω lives in the H -sphere). We cannot have some element $l \in k$ such that $\varphi(X) = l\varphi(Y)$ for all $\varphi \in \Omega^\circ$, because $X - lY$ would be in every $\ker(\varphi)$, contradicting the properness. Hence the set $\{[\varphi, \varphi', x, y]$ for $\varphi, \varphi' \in \Omega^\circ\}$ is not restricted to $\{1\}$ and the smallest symmetric ball containing it has a non empty interior. Its measure is not 0 and $d_\Omega(x, y) \neq 0$.

We have $[\varphi, \varphi', x, y] = [\varphi', \varphi, y, x]$. Hence we have $B_\Omega(x, y) = B_\Omega(y, x)$ and d_Ω is symmetric: $d_\Omega(x, y) = d_\Omega(y, x)$.

We have already mentioned that $[\varphi, \varphi', x, y] = [\varphi, \varphi', x, z][\varphi, \varphi', z, y]$. Hence, $B_\Omega(x, y)$ is included in the set $B_\Omega(x, z).B_\Omega(z, y)$. We check the following lemma:

Lemma 3.5. *If B and B' are two symmetric balls, we have $\mu(BB') \leq \mu(B) + \mu(B')$.*

Proof. If $\mathbf{k} = \mathbf{R}$, the symmetric balls of radius t in \mathbf{R}_+^* is $[t^{-1}, t]$ and we have $\mu([t^{-1}, t]) = \ln(t)$ (up to a constant). Hence we have

$$\mu([t^{-1}, t][s^{-1}, s]) = \mu([t^{-1}s^{-1}, st]) = \ln(t) + \ln(s).$$

If \mathbf{k} is a non archimedean local field, note \mathcal{O} the ring of integers, q^{-1} the norm of an uniformizer (for $\mathbf{k} = \mathbf{Q}_p$, this means $\mathcal{O} = \mathbf{Z}_p$ and $q = p$), let B_t be the symmetric ball of radius q^t , B_s of radius q^s (with $t \leq s$ integers). Then $\mu(B_t) = \frac{1}{q-1}q^{t+1}$ if $t < 0$ and $t+1$ if $t \geq 0$ (normalizing μ by $\mu(\mathcal{O}^*) = 1$). Moreover one checks that the product $B_t B_s$ is B_s if $t \leq 0$ or B_{t+s} . Hence the results also hold in this case. \square

It yields that d_Ω verifies the triangular inequality, and even in the p -adic case, an ultrametric inequality if a distance is lesser than 1. \square

Remark that in the real case, we just redefined the Hilbert distance, nothing more. We hope that this definition may give some nice non-standard Hilbert geometries. We shall try to get some insights on the possible geometries elsewhere. We focus in this paper on the first important examples, namely the hyperbolic discs $\mathbf{D}_{\bar{\alpha}}$. We study in the following section their geometry.

Let us discuss a bit the triangle before that. Let $\mathbf{k} = \mathbf{Q}_p$ and H be the subgroup of squares. Then one checks that the dual $(\mathbf{T}_H)^\circ$ of the triangle is composed of exactly three points in the H -sphere of $(\mathbf{Q}_p^3)'$: the projection of the three coordinate forms, denoted e_1 , e_2 and e_3 .

As the dual is finite, we really need to consider symmetric balls to fill up the sets of cross-ratios involved in the definition of distance. Indeed, if we had not filled up, we would always compute the measure of a finite set. With the definition we gave, take two points $P_1 = [p^{n_1}x : 1 : p^{n_2}y]$ and $P_2 = [p^{m_1}a : 1 : p^{m_2}b]$ in the triangle (with x, y, a and b in \mathbf{Z}_p^*). Let $N = n_1 - m_1$, $M = n_2 - m_2$. Then we have (normalizing the Haar measure μ on \mathbf{Q}_p such that $\mu(\mathbf{Z}_p^*) = 1$:

Proposition 3.6. *The distance in \mathbf{T}_H between P_1 and P_2 is the following:*

- *If $N = M = 0$, then the distance is less than 1.*
- *Else, it is $\max\{N, M, -N, -M, N - M, M - N\} + 1$.*

Moreover, on the balls of radius 1, the distance is ultrametric.

The proof is a direct application of the definition. An interesting consequence is the following one: with the notation above, one can define a map π from \mathbf{T}_H to $\mathbf{Z}[j = e^{\frac{2i\pi}{3}}]$ by sending $[p^{n_1}x : 1 : p^{n_2}y]$ to $(n_1 + n_2j)$. This map shrinks the balls B_{n_1, n_2} of radius 1 in \mathbf{T}_H to a point in $\mathbf{Z}[j]$. But if you equip $\mathbf{Z}[j]$ with the hexagonal norm, the map sends two points of \mathbf{T}_H at distance d to two points in $\mathbf{Z}[j]$ at distance $d - 1$. The figure 3 shows the image of the ball of center $[1 : 1 : 1]$ and of radius 2. This exhibits a striking analogy with the Hilbert distance

on the triangle in the real case, which is isometric to the hexagonal norm on the plane \mathbf{R}^2 .

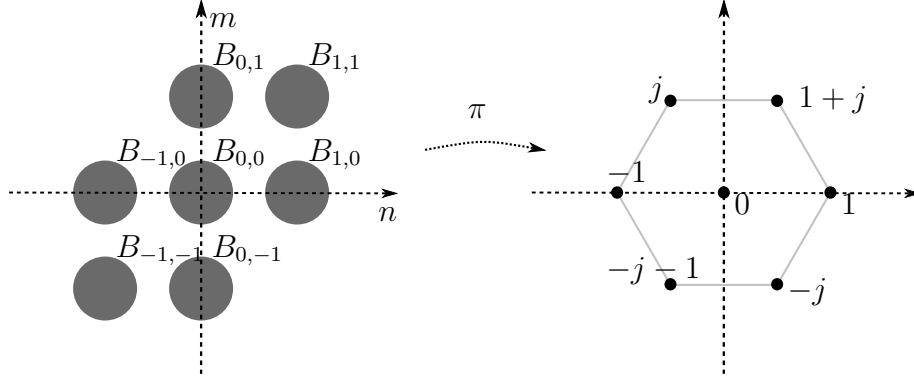


FIGURE 3. The Hilbert distance on the triangle

4. GEOMETRY OF THE HYPERBOLIC DISCS

The hyperbolic discs give nice examples of convex sets. The generalized Hilbert distance is defined and endow them with a geometry. We will describe a bit this geometry: what are their duals and isometry groups. Then we will actually compute the Hilbert distance.

Recall the setting of sections 1 and 2 : we work in a non-archimedean local field \mathbf{k} of characteristic $\neq 2$, $\bar{\alpha}$ is a fixed class in $\mathbf{k}^*/(\mathbf{k}^*)^2$ which does not contain -1 . We associated to it a subgroup $K_{\bar{\alpha}}$ of index 2 in $\mathbf{k}^*/(\mathbf{k}^*)^2$. We studied the quadratic form $Q(x, y, z) = xz - y^2$, and called B its polar form. We have defined the isotropic semi-cone $\mathcal{C}_{\bar{1}} \subset \mathbf{k}^3$ and we denoted $\mathcal{C}_{\bar{\alpha}}$ its projection in the $K_{\bar{\alpha}}$ -sphere¹. Thanks to B we have an identification between \mathbf{k}^3 and its dual, and so between their $K_{\bar{\alpha}}$ -spheres. With the definitions of the previous section, the meaning of theorem 2.2 is that the disc $\mathbf{D}_{\bar{\alpha}}$ is the convex $(\mathcal{C}_{\bar{\alpha}})^\circ$.

4.1. The duals. The description of the duals of the discs is required to compute the generalized Hilbert distance.

Proposition 4.1. *If -1 is a square in \mathbf{k} , or if $\bar{\alpha} \neq 1$, then the dual $\mathbf{D}_{\bar{\alpha}}^\circ$ of $\mathbf{D}_{\bar{\alpha}}$ is exactly the semi-cone $\mathcal{C}_{\bar{\alpha}}$.*

If -1 is not a square, and $\bar{\alpha} = 1$, then the dual $\mathbf{D}_{\bar{1}}^\circ$ is $\mathbf{D}_{\bar{1}} \cup \mathcal{C}_{\bar{1}}$.

¹It is only a slight abuse of notation, as the projections of the semi-cones $\mathcal{C}_{\bar{1}}$ and $\mathcal{C}_{\bar{\alpha}}$ in the $K_{\bar{\alpha}}$ -sphere are the same.

Proof. We know by theorem 2.2 that $\mathcal{C}_{\bar{\alpha}}$ is included in $\mathbf{D}_{\bar{\alpha}}^{\circ}$ and even that $\mathbf{D}_{\bar{\alpha}} = \mathcal{C}_{\bar{\alpha}}^{\circ}$. Moreover $\mathbf{D}_{\bar{\alpha}}^{\circ}$ does not intersect $\mathcal{C}_{\bar{\beta}}$ for $\beta \notin K_{\bar{\alpha}}$:

$$B((\alpha, 0, 1), (\beta, 0, 0)) = \beta \notin K_{\bar{\alpha}}.$$

Now, take some v outside of the isotropic cone. If v does not belong to $\mathbf{D}_{\bar{\alpha}}$ we may use the action of $\mathrm{PSL}(2, \mathbf{k})$ to send it (at the limit) in a semi-cone $\mathcal{C}_{\bar{\beta}}$ for $\bar{\beta} \neq \bar{\alpha}$ (the isotropic cone is the limit set for the action of $\mathrm{PSL}(2, \mathbf{k})$ on $\mathbb{P}(\mathbf{k}^3)$). Hence v does not belong to $\mathbf{D}_{\bar{\alpha}}^{\circ}$.

If v belongs to $\mathbf{D}_{\bar{\alpha}}$, up to the action of $\mathrm{PSL}(2, \mathbf{k})$ (and homothety), one may assume that $v = (\alpha x^2, 0, 1)$ for some $x \in \mathbf{k}$. We then get that, for any $v' = (a, b, c) \in \mathbf{D}_{\bar{\alpha}}$:

$$B(v, v') = (\alpha x^2 c + a) \in K_{\bar{\alpha}}$$

Choose $v' = (\alpha y^2, 0, 1)$. Then, we get $B(v, v') = \alpha(x^2 + y^2)$. This belongs to $K_{\bar{\alpha}}$ for any y if and only if -1 is not a square, and $\bar{\alpha} = \bar{1}$.

We conclude by the following: if -1 is not a square, and $\bar{\alpha} = \bar{1}$, take, v and w in $\mathbf{D}_{\bar{1}}$. Then up to the action of $K_{\bar{1}} \mathrm{Ad}(\mathrm{PSL}(2, \mathbf{k}))$, one may assume that $v = (x^2, 0, 1)$ and $w = (y^2, 0, 1)$ for some x, y in \mathbf{k} . And we have $B(v, w) = x^2 + y^2 \in K_{\bar{1}}$. \square

The second situation described (-1 not a square, $\bar{\alpha} = \bar{1}$) reminds us of the real case. The existence of the other ones shows the limits of the analogy. But in any case, the dual is big enough and $\mathbf{D}_{\bar{\alpha}}$ is a proper and open $K_{\bar{\alpha}}$ -convex set:

Corollary 2. *The hyperbolic disc $\mathbf{D}_{\bar{\alpha}}$ is a proper and open $K_{\bar{\alpha}}$ -convex set. It inherits a Hilbert distance $d_{\mathbf{D}_{\bar{\alpha}}}$.*

We will effectively compute the distance in section 4.4. Before that, let us try to describe a bit the geometry and isometries of these discs.

4.2. Lines, short and long. We have a natural notion of line in the disc $\mathbf{D}_{\bar{\alpha}}$. Consider a point $v \in \mathbf{D}_{\bar{\alpha}}$. Any (linear) plane in \mathbf{k}^3 projects to a projective line in $\mathbf{S}_{\bar{\alpha}}$. We call *line* in $\mathbf{D}_{\bar{\alpha}}$ the intersection of a line in $\mathbf{S}_{\bar{\alpha}}$ with $\mathbf{D}_{\bar{\alpha}}$.

Hence through two distinct points in $\mathbf{D}_{\bar{\alpha}}$, there is a unique line in $\mathbf{D}_{\bar{\alpha}}$. But there are two distinct kind of lines: short lines, which are compact in $\mathbf{S}_{\bar{\alpha}}$, and long lines, for which the closure intersects $\mathcal{C}_{\bar{\alpha}}$ in exactly two points.

Indeed, consider a point $v \in \mathbf{D}_{\bar{\alpha}}$. A line through v is determined by a vector w in v^{\perp} , such that the line is the projectivization of the plane P_w generated by v and w . Now we have seen that Q restricted to v^{\perp} is equivalent to the form $-\alpha x^2 - y^2$. Hence it takes values exactly in $-K_{\bar{\alpha}}$. So there are two cases:

- If $Q(w) \in -\bar{\alpha}$, then Q restricted to P_w is isotropic and the projection of P_w in $\mathbf{S}_{\bar{\alpha}}$ intersects $C_{\bar{\alpha}}$ in two points. We call it a *long line*.
- If $Q(w) \notin -\bar{\alpha}$, then Q restricted to P_w is anisotropic and the projection of P_w in $\mathbf{S}_{\bar{\alpha}}$ does not intersect $C_{\bar{\alpha}}$. Then the projection of P_w in $\mathbf{S}_{\bar{\alpha}}$ is the union of two disjoint compact sets: the points in $\mathbf{D}_{\bar{\alpha}}$ and its complementary. We call it a *short line*.

For a line l in $\mathbf{D}_{\bar{\alpha}}$, we note $P(l)$ the plane in \mathbf{k}^3 such that l is the projectivization of $P(l)$ (intersected with $\mathbf{D}_{\bar{\alpha}}$). For two lines through a point v , there is a well-defined notion of orthogonality, thanks to the bilinear form B :

Definition 4.1. Two lines l_1 and l_2 through a point v in $\mathbf{D}_{\bar{\alpha}}$ are orthogonal if $P(l_1) \cap v^\perp$ and $P(l_2) \cap v^\perp$ are orthogonal for B .

One checks that if -1 is not a square and $\bar{\alpha} = \bar{1}$, then the orthogonal of a long line is a long line.

4.3. The projective isometry group. We are now able to describe the group of projective isometries, and the transitivity of its action. We will discuss later (see section 6) the existence of non-projective isometries.

Proposition 4.2. *The group $\text{Isom}(\mathbf{D}_{\bar{\alpha}})$ of projective maps in $\text{GL}(3, \mathbf{k})/K_{\bar{\alpha}}$ preserving $\mathbf{D}_{\bar{\alpha}}$ acts by isometries on $\mathbf{D}_{\bar{\alpha}}$. It is isomorphic to $\text{PGL}(2, \mathbf{k})$, an element g of $\text{PGL}(2, \mathbf{k})$ acting by $\det(g) \text{Ad}(g)$.*

Its action is transitive on $\mathbf{D}_{\bar{\alpha}} \times C_{\bar{\alpha}}$.

Its action is transitive on the sets of long lines, and of short lines.

Its action is transitive on the flags “a point in a long line”.

Its action preserves orthogonality.

Remark. From now on, the action of $\text{PGL}(2, \mathbf{k})$ on $\mathbf{D}_{\bar{\alpha}}$ will always be the one described above.

Proof. The first part is classical in Hilbert geometry: a projective transformation preserves $\mathbf{D}_{\bar{\alpha}}$ if and only if it preserves its dual. Hence it preserves the Hilbert distance defined. Moreover, an element of $\text{GL}(3, \mathbf{k})/K_{\bar{\alpha}}$ which preserves $C_{\bar{\alpha}}$ preserves the isotropic cone of Q . So it belongs to the projective orthogonal group $\text{PO}(Q)$. As it shall preserve $\mathbf{D}_{\bar{\alpha}}$, one easily sees that it is the group described.

Now the stabilizer of $C_{\bar{\alpha}}$ is generated by $\text{Ad}(\text{PSL}(2, \mathbf{k}))$ and $d_{\bar{\alpha}}$. Fix the point $K_{\bar{\alpha}}.(1, 0, 0)$ in $C_{\bar{\alpha}}$. Its stabilizer is generated by $d_{\bar{\alpha}}$ and $\text{Ad}(P)$ where P is the parabolic subgroup $\begin{pmatrix} x & y \\ 0 & x^{-1} \end{pmatrix}$. Moreover any point in $C_{\bar{\alpha}}$, represented by a triple (x^2, xy, y^2) is the image of $(1, 0, 0)$ under

$\text{Ad} \begin{pmatrix} x & 0 \\ \frac{y}{2} & x^{-1} \end{pmatrix}$, proving the transitivity of the action on $\mathcal{C}_{\bar{\alpha}}$. Remark that any point in $\mathbf{D}_{\bar{\alpha}}$ is represented by a triple $(\alpha c^{-2} + c^{-2}b^2, cb, c^2)$ (up to the action of $K_{\bar{\alpha}}$). By the action of $\text{Ad}(P)$ (namely of $\text{Ad} \begin{pmatrix} c & b \\ 0 & c^{-1} \end{pmatrix}$), this point is sent to $v_{\alpha} = (\alpha, 0, 1)$. This proves the first transitivity claimed.

Now fix a short line l (resp a long line L) through v_{α} . Take another short line l' (resp. long line L'). Using the transitivity of $\text{Isom}(\mathbf{D}_{\bar{\alpha}})$ on $\mathbf{D}_{\bar{\alpha}}$, we send l' (resp L') on a short (resp. long) line through v_{α} . Eventually the stabilizer of v acts transitively on the set of directions $\langle w \rangle$ in v^{\perp} such that $Q(w) \notin -\bar{\alpha}$ (resp. $Q(w) \in -\bar{\alpha}$). So you may send l' to l , and L' to L .

The stabilizer of the long line $\{(x, 0, y), x, y \in K_{\bar{\alpha}}\}$ acts transitively on this line (indeed, it contains all the diagonal matrices with entries in $K_{\bar{\alpha}}$). Using the transitivity on the long lines, we get the transitivity on the flags.

The last point is straightforward. □

We may describe more precisely the action of $\text{PGL}(2, \mathbf{k})$ on $\mathcal{C}_{\bar{\alpha}}$:

Fact 2. *The action of $\text{PGL}(2, \mathbf{k})$ on $\mathcal{C}_{\bar{\alpha}}$ is isomorphic to its projective action on $\mathbf{P}_1(\mathbf{k})$ via the bijection:*

$$K_{\bar{\alpha}}(x^2, xy, y^2) \mapsto \mathbf{k}(x, y).$$

4.4. The Hilbert distance on the discs. Of course it is possible to effectively compute the distance. We only prove the result when $\mathbf{k} = \mathbf{Q}_p$ with $p \neq 2$ and $\bar{\alpha}$ has even valuation. Here we choose the Haar measure on \mathbf{Q}_p such that $\mu(\mathbf{Z}_p^*) = 1$ and fix $\alpha \in \bar{\alpha}$ of valuation 0. Thanks to the transitivity of the isometry group, we just have to compute two distances: first the distance between the point $v_{\alpha} = (\alpha, 0, 1)$ and a point $v_1 = (\alpha x^2, 0, 1)$ (for which v_{α} and v_1 define a long line), second the distance between v_{α} and some $v_2 = ((1 - ay)\alpha, 1, 1 + ay)$, where $a \in \mathbf{Z}_p^*$ is such that $1 + \alpha a^2$ does not belong to $-\bar{\alpha}$. Indeed in the second case, one checks that v_{α} and v_2 define a short line.

Proposition 4.3. *Assume $p \neq 2$ and $\bar{\alpha}$ has even valuation.*

First case : *The Hilbert distance $d_{\mathbf{D}_{\bar{\alpha}}}$ between the points $v_{\alpha} = (\alpha, 0, 1)$ and $v_1 = (\alpha x^2, 0, 1)$ on a long line is given by*

- $d_{\mathbf{D}_{\bar{\alpha}}}(v_{\alpha}, v_1) = 2n + 1$, if $\max(|x^2 - 1|, |x^{-2} - 1|) = p^{2n} \geq 1$.
- $d_{\mathbf{D}_{\bar{\alpha}}}(v_{\alpha}, v_1) = \frac{1}{p-1} p^{n+1}$, if $\max(|x^2 - 1|, |x^{-2} - 1|) = p^n < 1$.

Second case : *The Hilbert distance $d_{\mathbf{D}_{\bar{\alpha}}}$ between the points $v_{\alpha} = (\alpha, 0, 1)$ and $v_2 = ((1 - ay)\alpha, y, (1 + ay))$ on a short line is always*

lesser than one. If $|y| = 1$, it is 1. If $|y| = p^n < 1$, it is given by $\frac{1}{p-1}p^{n+1}$.

Remark. If $\bar{\alpha}$ has an odd valuation, one checks that the only modifications needed are the following. In the first case (long line), if $\max(|x^2 - 1|, |x^{-2} - 1|) = p^{2n} \geq 1$, then one gets $d_{\mathbf{D}_{\bar{\alpha}}}(v_{\alpha}, v_1) = 2n + \frac{1}{2}$. In the second case (short line), if $|y| = 1$, the distance becomes $\frac{1}{2}$.

Proof. We sketch the computation.

First case: Fix $w = (a, b, c)$ and $w' = (a', b', c')$ in the dual $\mathbf{D}_{\bar{\alpha}}^{\circ}$, choosing a, a', c and c' squares in \mathbf{Z}_p . We want to evaluate the cross-ratio:

$$\frac{B(w, v_1) B(w', v_{\alpha})}{B(w, v_{\alpha}) B(w, v_1)} = \frac{\alpha c x^2 + a}{\alpha c + a} \frac{\alpha c' + a'}{\alpha c' x^2 + a'}.$$

Taking $w = (1, 0, 0)$ and $w' = (0, 0, 1)$, the cross-ratio takes the value x^2 . Permuting w and w' , it equals x^{-2} . Let us show that all the cross-ratios belong to the smallest symmetric ball containing x^2 .

Suppose first that $|x^2| = p^{2n} \geq 1$. It is easily seen that the first ratio has a norm between 1 and p^{2n} (recall that there is no simplification between a square and α times a square). The second ratio has a norm between p^{-2n} and 1. Hence the cross-ratio has a norm between p^{-2n} and p^{2n} . This means it belongs to the symmetric ball in $K_{\bar{\alpha}}$ containing x^2 and x^{-2} . And this symmetric ball is the union:

$$\cup_{-n \leq k \leq n} p^{2k} \mathbf{Z}_p^*.$$

It has the stated measure.

If we have $|x^2 - 1| = p^n < 1$, i.e. $x^2 = 1 + x'$, then we may rewrite the cross-ratio:

$$\frac{B(w, v_1) B(w', v_{\alpha})}{B(w, v_{\alpha}) B(w, v_1)} = \frac{1 + x' \frac{\alpha c}{\alpha c + a}}{1 + x' \frac{\alpha c'}{\alpha c' + a'}}.$$

It is closer to 1 than x^2 , so belongs to the smallest symmetric ball containing x^2 , i.e. to $1 + p^n \mathbf{Z}_p$. It has measure $\frac{1}{p-1}p^{n+1}$.

Second case: first of all, we have $Q(v_2) = \alpha - (1 + \alpha a^2)y$. As it belongs to $\bar{\alpha}$ and we supposed that $-(1 + \alpha a^2)$ does not belong to $\bar{\alpha}$, it implies that $|y| \leq 1$. Fix $w = (d, e, f)$ and $w' = (d', e', f')$ in $\mathbf{D}_{\bar{\alpha}}^{\circ}$. We compute the cross-ratio:

$$\frac{B(w, v_2) B(w', v_{\alpha})}{B(w, v_{\alpha}) B(w, v_2)} = \frac{1 - ay(1 + \frac{2e}{a(\alpha f + d)})}{1 - ay(1 + \frac{2e'}{a(\alpha f' + d')})}.$$

One sees that the smallest symmetric ball containing these cross-ratios is \mathbf{Z}_p^* if $|y| = 1$, else $1 + |y| \mathbf{Z}_p$. \square

A remark on this proposition: the values taken by $d_{\mathbf{D}_{\bar{\alpha}}}$ are $\frac{1}{p-1}p^{n+1}$ for negative n , and $2n + 1$ for positive n (or $2n + \frac{1}{2}$). It proves that this distance is ultrametric at distance less than one. We will see that at large scales, it is not any more ultrametric. We define the ultrametric locus around a point:

Definition 4.2. For some point ω in $\mathbf{D}_{\bar{\alpha}}$, we denote by $\mathcal{U}(\omega)$ its ultrametric neighbourhood:

$$\mathcal{U}(\omega) = \{\omega' \text{ such that } d_{\mathbf{D}_{\bar{\alpha}}}(\omega, \omega') \leq 1\}.$$

Remarky that, for two points in a long line, we have a much more precise notion than the distance:

Definition 4.3. Let v and v' be two points in $\mathbf{D}_{\bar{\alpha}}$ defining a long line L . Let w and w' be the two intersection points between L and the isotropic semi-cone, $\varphi = B(w, \cdot)$ and $\varphi' = B(w', \cdot)$.

We denote by $D_{\bar{\alpha}}(v, v')$ the set $\{[\varphi, \varphi', v, v'], [\varphi', \varphi, v, v']\}$, and call it the multiplicative (Hilbert) distance between v and v' .

The Hilbert distance $d_{\bar{\alpha}}$ is a function of $D_{\bar{\alpha}}$, justifying the name of multiplicative distance:

Fact 3. *Let v and v' be two points in $\mathbf{D}_{\bar{\alpha}}$ defining a long line. Let $\{x, x^{-1}\} = D_{\bar{\alpha}}(v, v')$. Let $p^n = \max\{|x - 1|, |x^{-1} - 1|\}$.*

Then $d_{\bar{\alpha}}$ is given by $n + 1$ if $n \geq 0$, else by $\frac{1}{p-1}p^{n+1}$.

5. LINKS WITH THE TREE

We clarify here the links between the hyperbolic disc associated to an $\bar{\alpha}$ of even valuation in \mathbf{Q}_p with $p \neq 2$ and the more classical tree \mathcal{T} of $\mathrm{PSL}(2, \mathbf{Q}_p)$. We will not treat the case of a general non-archimedean local field in order to avoid heavy notations. However, it should be clear that the same phenomenon occurs in this more general case. The situation is a bit different for the discs associated to an $\bar{\alpha}$ of odd valuation. Let us recall briefly that the tree may be defined as follows [Ser03]:

- The vertices are the orders (up to isometry) in \mathbf{Q}_p^2 , i.e. the free \mathbf{Z}_p -modules of rank 2. It is also the set $\mathrm{PGL}(2, \mathbf{Q}_p) / \mathrm{PGL}(2, \mathbf{Z}_p)$.
- Two orders are linked by an edge if they are of index p one in the other.

The action of $\mathrm{PSL}(2, \mathbf{Q}_p)$ has two distinct orbits: the orbit of \mathbf{Z}_p^2 and the orbit of $\mathbf{Z}_p \cdot (1, 0) \oplus \mathbf{Z}_p \cdot (0, p)$. Two linked vertices belongs to different

orbits. One sees that this graph is a complete $p+1$ -tree². Its boundary at infinity is naturally identified with $\mathbf{P}_1(\mathbf{Q}_p)$. Two distinct points in $\mathbf{P}_1(\mathbf{Q}_p)$ represented by vectors v_1 and v_2 define a unique geodesic in the tree, composed by the orders of the form $\mathbf{Z}_p \cdot xv_1 \oplus \mathbf{Z}_p \cdot yv_2$.

The hyperbolic disc $\mathbf{D}_{\bar{\alpha}}$ and the tree are both homogeneous sets under $\mathrm{PGL}(2, \mathbf{Q}_p)$. The normalizer of a point in $\mathbf{D}_{\bar{\alpha}}$ is a compact subgroup, so it is included in a conjugate of $\mathrm{PGL}(2, \mathbf{Z}_p)$. We will check (by a tedious computation, unfortunately) that it is included in only one maximal compact subgroup. This holds because we supposed $\bar{\alpha}$ has even valuation. Hence, we have a well-defined and natural map from $\mathbf{D}_{\bar{\alpha}}$ to \mathcal{T} which turns out to be the collapse of each ultrametric locus on a vertex in the tree. This map is a covariant quasi-isometry:

Theorem 5.1. *For any $v \in \mathbf{D}_{\bar{\alpha}}$, there is a unique point $p := \pi_{\bar{\alpha}}(v) \in \mathcal{T}$ such that the stabilizer of p in $\mathrm{PGL}(2, \mathbf{Q}_p)$ contains the stabilizer of v in $\mathrm{PGL}(2, \mathbf{Q}_p)$. The projection $\pi_{\bar{\alpha}} : \mathbf{D}_{\bar{\alpha}} \rightarrow \mathcal{T}$ defines a quasi-isometry covariant for the action of $\mathrm{PGL}(2, \mathbf{Q}_p)$.*

Moreover, $\pi_{\bar{\alpha}}$ induces a bijection between the set of long lines in $\mathbf{D}_{\bar{\alpha}}$ and the set of geodesics in \mathcal{T} .

Remark. Before going on with the proof, let us point out the similarity with the case of the triangle (see section 3.3): in both cases, the projection collapsing the ultrametric loci maps our convex to a discretized version of their real counterpart. For the triangle, the vertices of an hexagonal net reflected the hexagonal norm on the plane, and here the vertices of a tree look very much like a discretized hyperbolic disc.

Proof. I have no other proof of the first point than a direct computation: choose some $\alpha \in \bar{\alpha}$ of valuation 0. The stabilizer $\mathrm{Stab}(v_\alpha)$ of $v_\alpha = (\alpha, 0, 1)$ in $\mathrm{GL}(2, \mathbf{Q}_p)$ is composed of the elements g of the form:

$$\begin{pmatrix} a & \alpha\epsilon c \\ c & \alpha a \end{pmatrix},$$

where $\epsilon = \det(g) = \pm 1$ and a and c are tied by the relation $c^2 = \frac{1}{\alpha}(\epsilon - a^2)$.

As $-\alpha$ is not a square, it yields that $a \in \mathbf{Z}_p$ and then $g \in \mathrm{PGL}(2, \mathbf{Z}_p)$.

Now take an element of $h \in \mathrm{PGL}(2, \mathbf{Q}_p)$, represented by a matrix

$$\begin{pmatrix} x & y \\ z & \alpha t \end{pmatrix}$$

²Let us also mention that one may interpret the whole tree (edges included) as the set of norms on \mathbf{Q}_p^2 [GI63].

in $\mathrm{GL}(2, \mathbf{Q}_p)$ of determinant D verifying $|D| = 1$ or p . The assumption $h \mathrm{Stab}(v_\alpha) h^{-1} \subset \mathrm{PGL}(2, \mathbf{Q}_p)$ gives us the system of conditions:

- (1) $a(tx - \epsilon yz) + c(ty + \alpha \epsilon yz) \in D\mathbf{Z}_p$
- (2) $axy(\epsilon - 1) - c(y^2 + \alpha \epsilon x^2) \in D\mathbf{Z}_p$
- (3) $atz(-\epsilon + 1) + c(t^2 + \alpha \epsilon z^2) \in D\mathbf{Z}_p$
- (4) $a(-zy + \epsilon tx) - c(ty + \alpha \epsilon zx) \in D\mathbf{Z}_p$

It should be verified for every $\epsilon = \pm 1$ and a, c tied by the relation $c^2 = \frac{1}{\alpha}(\epsilon - a^2)$. We deduce that $x^2, y^2, z^2, t^2, tx, yz, ty\dots$ belong to $D\mathbf{Z}_p$. So $|D| = 1$ and x, y, z and t belong to \mathbf{Z}_p . We conclude that h belongs to $\mathrm{PGL}(2, \mathbf{Z}_p)$.

This proves that the only maximal compact subgroup of $\mathrm{PGL}(2, \mathbf{Q}_p)$ containing $\mathrm{Stab}(v_\alpha)$ is $\mathrm{PGL}(2, \mathbf{Z}_p)$. As all the stabilizers are conjugated, the first point is proven.

The covariance is clear. So it is enough to understand $\pi_{\bar{\alpha}}$ along a long line, using the transitivity of $\mathrm{PGL}(2, \mathbf{Q}_p)$. One easily identifies the projection along the long line between $(1, 0, 0)$ and $(0, 0, 1)$:

$$\pi_{\bar{\alpha}}(\alpha x^2, 0, 1) = \mathbf{Z}_p \cdot (x, 0) \oplus \mathbf{Z}_p \cdot (0, 1).$$

Hence if v and v' are at distance d in $\mathbf{D}_{\bar{\alpha}}$, their projections $\pi_{\bar{\alpha}}(v)$ and $\pi_{\bar{\alpha}}(v')$ are at distance $E(\frac{d}{2})$. The projection is a quasi-isometry. It is nothing else than the collapse of the ultrametric loci in $\mathbf{D}_{\bar{\alpha}}$ to points in the tree.

The projection $\pi_{\bar{\alpha}}$ extends to the bijection $K_{\bar{\alpha}}(a^2, ab, b^2) \mapsto [a : b]$ from the isotropic cone $\mathcal{C}_{\bar{\alpha}}$ to $\mathbf{P}_1(\mathbf{Q}_p)$. As a long line (above) or a geodesic (in the tree) is uniquely defined by its ends in (respectively) $\mathcal{C}_{\bar{\alpha}}$ and $\mathbf{P}_1(\mathbf{Q}_p)$, the projection $\pi_{\bar{\alpha}}$ defines a covariant bijection between the long lines and the geodesics. \square

Remark. We won't be precise, but when the valuation of $\bar{\alpha}$ is odd and -1 is not a square, then each point in $\mathbf{D}_{\bar{\alpha}}$ has a well-defined projection to an *edge* of \mathcal{T} . It explains why $\mathrm{PSL}(2, \mathbf{Q}_p)$ may act transitively on these $\mathbf{D}_{\bar{\alpha}}$.

6. THE GROUP OF AUTOMORPHISMS

We show here that a transformation of $\mathbf{D}_{\bar{\alpha}}$ that preserves the multiplicative Hilbert distance is projective ; i.e. it belongs to $\mathrm{Isom}(\mathbf{D}_{\bar{\alpha}})$. It does not hold under the weaker hypothesis of preserving the Hilbert distance because the latter lacks precision. For example, the Hilbert distance by itself does not allow to define long lines as ‘‘geodesics’’, whereas the multiplicative Hilbert distance does.

Throughout this section, $\bar{\alpha}$ is a fixed element in $\mathbf{k}^*/(\mathbf{k}^*)^2$, represented by some $\alpha \in \mathbf{k}^*$.

6.1. Multiplicative Hilbert distance. Recall that we defined the notion of multiplicative Hilbert distance (definition 4.3). This notion will be enough to characterize in the following the action of $\mathrm{PGL}(2, \mathbf{k})$. Of course the multiplicative Hilbert distance is invariant under the action of $\mathrm{PGL}(2, \mathbf{k})$.

The action of $\mathrm{PGL}(2, \mathbf{k})$ becomes transitive on the pair of points at equal multiplicative distance:

Lemma 6.1. *For any x in \mathbf{k}^* , the action of $\mathrm{PGL}(2, \mathbf{k})$ on the set $\{(v, v') \in \mathbf{D}_{\bar{\alpha}}^2 \text{ such that } D(v, v') = \{x, x^{-1}\}\}$ is transitive*

Proof. Fix a pair (v, v') of points such that $D(v, v') = \{x, x^{-1}\}$. The group $\mathrm{PGL}(2, \mathbf{k})$ acts transitively on the flags (i.e. a point in a long line) by lemma 4.2, hence it sends v on $v_\alpha = K_{\bar{\alpha}}(\alpha, 0, 1)$, and v' on a point of the form $K_{\bar{\alpha}}(\alpha y^2, 0, 1)$. As $\mathrm{PGL}(2, \mathbf{k})$ preserves the multiplicative distance, we have either $y = x$ or $y = x^{-1}$. The action of $\begin{pmatrix} 0 & -x \\ \frac{1}{x} & 0 \end{pmatrix}$ fixes v_α and maps $K_{\bar{\alpha}}(\alpha x^2, 0, 1)$ to $K_{\bar{\alpha}}(\alpha, 0, x^2) = K_{\bar{\alpha}}(\alpha x^{-2}, 0, 1)$.

So the action of some element in $\mathrm{PGL}(2, \mathbf{k})$ maps the points v and v' to $K_{\bar{\alpha}}(\alpha, 0, 1)$ and $K_{\bar{\alpha}}(\alpha x^2, 0, 1)$, proving the transitivity. \square

We define now the notion of automorphism of $\mathbf{D}_{\bar{\alpha}}$ by asking that it preserves the multiplicative Hilbert distance. Indeed it seems reasonable to consider that this multiplicative distance is a natural invariant for two points in $\mathbf{D}_{\bar{\alpha}}$ lying on a long line. So a transformation of $\mathbf{D}_{\bar{\alpha}}$ which preserves its convex structure should preserve the multiplicative Hilbert distance:

Definition 6.1. Let T be a transformation of $\mathbf{D}_{\bar{\alpha}}$. It is an automorphism of $\mathbf{D}_{\bar{\alpha}}$ if it preserves the multiplicative distance, i.e.:

- if v and v' lie on a long line, so do $T(v)$ and $T(v')$.
- for any v and v' on a long line, we have $D(T(v), T(v')) = D(v, v')$.

The next section shows that any automorphism is indeed given by an element of $\mathrm{PGL}(2, \mathbf{k})$.

6.2. Every automorphism is projective.

Theorem 6.2. *Consider an automorphism T of $\mathbf{D}_{\bar{\alpha}}$.*

Then T is a projective transformation preserving the quadratic form Q , i.e. T belongs to $\mathrm{Isom}(\mathbf{D}_{\bar{\alpha}})$.

The proof is the same as in the real case: up to the action of $\text{Isom}(\mathbf{D}_{\bar{\alpha}})$, we may assume that T has a pointwise fixed long line and another fixed point. We prove that the multiplicative distance to these fixed points characterize any point in $\mathbf{D}_{\bar{\alpha}}$. We will need the notion of circle:

Definition 6.2. Let v be a point in $\mathbf{D}_{\bar{\alpha}}$ and $x \in \mathbf{k}^*$. The circle centered at v and of multiplicative radius $\{r, r^{-1}\}$ is the set:

$$C(v, r) = \{v' \in \mathbf{D}_{\bar{\alpha}} \text{ such that } D(v, v') = \{r, r^{-1}\}\}.$$

Remark. The multiplicative Hilbert distance is defined for points on a long line. So for any v' in the circle $C(v, r)$, the line (vv') is a long one.

We then study intersections of circles:

Lemma 6.3 (Two circles intersect in at most two points). *Consider two distinct points v and v' in $\mathbf{D}_{\bar{\alpha}}$ on a long line. Fix r and r' in $\mathbf{k}^* \setminus \{1\}$.*

Then there are at most two points in the intersection between the circles $C(v, r)$ and $C(v', r')$. If there are effectively two points, there is an involution $g \in \text{Isom}(\mathbf{D}_{\bar{\alpha}})$ which fixes v and v' and permutes these two points.

Proof. Once again, one may assume that we have $v = K_{\bar{\alpha}}(\alpha, 0, 1)$ and $v' = K_{\bar{\alpha}}(\alpha x^2, 0, 1)$ and the proof is a calculus. The idea is that both circles are curves of degree 2, hence may intersect in at most two points.

The circle $C(v, r)$ is the orbit of $K_{\bar{\alpha}}(\alpha r^2, 0, -1)$ under $\text{Stab}(v)$. And one may similarly see the circle $C(v', r')$ as the orbit:

$$\begin{pmatrix} x^2 & 0 & 0 \\ 0 & x & 0 \\ 0 & 0 & 1 \end{pmatrix} \text{Stab}(v) \cdot K_{\bar{\alpha}}(\alpha r'^2, 0, 1).$$

We have already described $\text{Stab}(v)$:

$$\text{Stab}(v) = \left\{ \text{Ad} \begin{pmatrix} a & -\alpha\epsilon c \\ c & \epsilon a \end{pmatrix} \text{ for } \epsilon = \pm 1 \text{ and } \alpha c^2 = \epsilon - a^2 \right\}.$$

Note that in the previous description one may transform (a, c) in $(-a, -c)$ without changing the element in $\text{Stab}(v)$. Hence the elements of $C(v, r)$ have coordinates:

$$(\alpha\epsilon a^2 r^2 + (1 - \epsilon a^2); (r^2 - 1)\epsilon a c; (1 - \epsilon a^2)r^2 + \epsilon a^2),$$

where $\epsilon = \pm 1$ and $\alpha c^2 = \epsilon - a^2$. For $C(v', r')$ we get:

$$(x^2(\alpha\epsilon' a'^2 r'^2 + (1 - \epsilon' a'^2)); (r'^2 - 1)\epsilon' a' c'; ((1 - \epsilon' a'^2)r'^2 + \epsilon' a'^2))$$

where $\epsilon' = \pm 1$ and $\alpha\epsilon'^2 = \epsilon' - a'^2$. As v and v' are distinct, we have $x \neq 1$. Hence the equality of the first and the third coefficients gives a linear system in the unknowns ϵa^2 and $\epsilon' a'^2$ which has at most one solution. Using the equality between the second coefficient, there are at most two solutions (r, s, t) and $(r, -s, t)$. Hence these two solutions are mapped one onto the other by the matrix:

$$\begin{pmatrix} 1 & 0 & 0 \\ 0 & -1 & 0 \\ 0 & 0 & 1 \end{pmatrix} \in \text{Stab}(v) \cap \text{Stab}(v').$$

□

We are now able to see that three multiplicative distances are enough to define a point in $\mathbf{D}_{\bar{\alpha}}$:

Lemma 6.4 (A point is defined by three multiplicative distances). *Let v_1, v_2 and v_3 be three distinct points in $\mathbf{D}_{\bar{\alpha}}$, any two of them lying on a long line, but the three of them not lying on the same long line.*

Then, for any r_1, r_2 and r_3 in \mathbf{k}^ there is at most one point in $\mathbf{D}_{\bar{\alpha}}$ at multiplicative distance $\{r_i, r_i^{-1}\}$ of the point v_i for $i = 1, 2$ and 3 .*

Proof. Fix the v_i 's and r_i 's. Suppose by contradiction that two points $v \neq v'$ in $\mathbf{D}_{\bar{\alpha}}$ are at multiplicative distances $\{r_i, r_i^{-1}\}$ of the point v_i for $i = 1, 2$ and 3 . One may assume that all the r_i are different of 1, because if $r_i = 1$, the only possible solution is v_i .

One of the v_i , say v_2 , does not belong to the line (vv') , because the v_i 's do not belong to the same line. Using the previous lemma, for any $i \neq j$ there is an involution t_{ij} in $\text{Isom}(\mathbf{D}_{\bar{\alpha}})$ fixing v_i and v_j such that $t_{ij}(v) = v'$. Hence $t_{12}t_{23}$ fixes the three distinct points v, v' and v_2 which are not on the same line. Hence $t_{12}t_{23}$ is a projective transformation of \mathbf{k}^3 which fixes pointwise the two distinct projective lines (vv') and (vv_2) . Hence it is an homothety. We get $t_{12} = t_{23}$.

It implies that the lines (v_1v_2) and (v_2v_3) are the same, which contradicts the assumption that the v_i 's do not belong to the same line. □

The proof of the theorem follows:

Proof of theorem 6.2. Consider an automorphism T . Consider 3 points v_1, v_2 and v_3 , two of them defining a long line, but the three of them not belonging to the same line.

The group $\text{Isom}(\mathbf{D}_{\bar{\alpha}})$ acts transitively on the couple of points at same multiplicative distance (lemma 6.1). So there is an element g_1 in $\text{Isom}(\mathbf{D}_{\bar{\alpha}})$ such that g_1T fixes v_1 and v_2 . As g_1T is still an automorphism, it sends v_3 to one of the at most two points at distance $D(v_1, v_3)$ of v_1 and $D(v_2, v_3)$ of v_2 . One then may choose, using lemma 6.3, some

g_2 in $\text{Isom}(\mathbf{D}_{\bar{\alpha}})$ such that $g_2 g_1 T$ fixes v_1, v_2 , and v_3 . By the lemma 6.4, $g_2 g_1 T$ is the identity.

It proves that T is a projective map, i.e. it belongs to $\text{Isom}(\mathbf{D}_{\bar{\alpha}})$. \square

CONCLUSION

It seems to the author that the construction described along this paper raises numerous questions. The notions of p -adic convexity and of Hilbert distance may not be suitably defined here ; but it would at least be interesting to test it on other examples and to see how rich p -adic Hilbert geometries are. As for the hyperbolic discs, their existence gives a geometric object whose transformation group is $\text{PGL}(2, \mathbf{k})$. They also deserve further studies. One may wonder if some problems or applications around the hyperbolic disc may be given a p -adic analogue. Here are three questions that seem worth exploring to me.

First of all, as mentioned in the introduction, the automorphisms of the tree form a huge group. We proved that if such an automorphism comes from an automorphism of the discs, then it acts as an element of $\text{PGL}(2, \mathbf{k})$. But the geometry of the discs gives us a lot of invariants. For example, we get a notion of pencil of geodesics: a pencil of geodesics in the tree is (the projection of) a set of lines passing through a point in the disc above. What does the group of automorphisms of the tree which map pencils to pencils look like? And there are other notions to study, e.g. orthogonality of long lines.

Secondly, one is tempted to see a lattice in $\text{PGL}(2, \mathbf{k})$ as the fundamental group of the quotient of hyperbolic discs by its action. Can we describe the p -adic surfaces that one obtains by this construction? In other words, what are the surfaces *uniformized* by the p -adic hyperbolic discs ?

Eventually, and that was the starting point of this work, the notion of convexity in the real projective plane (and projective spaces of higher dimension) is the very starting point of the theory of divisible convex sets and relates with the Hitchin component of representations of a surface group (see [Ben08] for a survey on divisible convex sets). Though we lack the mere notion of connectedness, are we able to develop an analogue of some parts of these beautiful theories ?

ANNEX : PROOF OF FACT 1

Recall the setting of our Iwazawa decomposition of the group $\text{SO}(Q)$. Let Q' be the quadratic form $x_1^2 + \dots + x_{n-1}^2$. Consider the three following subgroups of $\text{SL}(n+1, \mathbf{k})$:

- $N^+ = \begin{pmatrix} 1 & 2^t w A & Q'(w) \\ 0 & A & w \\ 0 & 0 & 1 \end{pmatrix}$ for $A \in \text{SO}(Q')$ and $w \in \mathbf{k}^{n-1}$.
- $N^- = \begin{pmatrix} 1 & 0 & 0 \\ v & B & 0 \\ Q'(v) & 2^t v B & 1 \end{pmatrix}$ for $B \in \text{SO}(Q')$ and $v \in \mathbf{k}^{n-1}$.
- $H = \begin{pmatrix} x & 0 & 0 \\ 0 & Id & 0 \\ 0 & 0 & \frac{1}{x} \end{pmatrix}$ ($t \in \mathbf{k}^*$).

The three following facts may be proven with geometric considerations in the real case. But elementary linear algebra leads to the same conclusion and works on any field.

Fact 4. • *All three are subgroups of $\text{SO}(Q)$ and H normalizes both N^+ and N^- .*

- *The subgroup N^+ is the stabilizer of $v_0 = \begin{pmatrix} 1 \\ 0 \\ \vdots \\ 0 \end{pmatrix}$ in $\text{SO}(Q)$.*
- *The group $\text{SO}(Q)$ decomposes as the product $N^- H N^+$.*

Proof. Let P be the matrix representing the quadratic form $2Q$ in the standard basis of \mathbf{k}^{n+1} :

$$P = \begin{pmatrix} 0 & 0 & 1 \\ 0 & -2Id & 0 \\ 1 & 0 & 0 \end{pmatrix},$$

such that $Q(v) = \frac{1}{2} {}^t v P v$ for any $v \in \mathbf{k}^{n+1}$. The group $\text{SO}(Q)$ is the group of matrices M in $\text{SL}(n+1, k)$ verifying ${}^t M P M = P$.

It is clear that H preserves Q and normalizes N^- and N^+ .

Let us prove that N^+ is the stabilizer of v_0 in $\text{SO}(Q)$ (it will also prove it is indeed a subgroup of $\text{SO}(Q)$!): a matrix in $\text{SO}(Q)$ stabilizing the vector v_0 also stabilizes its orthogonal. The latter is the subspace $\mathbf{k}^n \times \{0\}$ of vectors having the last coordinate equals to 0. Hence a

matrix M stabilizing v_0 has a first column $= \begin{pmatrix} 1 \\ 0 \\ \vdots \\ 0 \end{pmatrix}$ and the last line

$(0, \dots, 0, x)$ for some $x \in \mathbf{k}$. In other words, one may write:

$$M = \begin{pmatrix} 1 & {}^t v & y \\ 0 & A & w \\ 0 & 0 & x \end{pmatrix}$$

where A is a $(n - 1) \times (n - 1)$ -matrix, and v, w belong to \mathbf{k}^{n-1} . A straightforward computation gives:

$${}^tMPM = \begin{pmatrix} 0 & 0 & x \\ 0 & -2^tAA & xv - 2^tAw \\ x & {}^t(xv - 2^tAw) & 2xy - 2^tww \end{pmatrix}.$$

The equality ${}^tMPM = P$ leads to, successively, $x = 1$, $v = 2^tAw$, ${}^tAA = Id$, $y = {}^tww$. The last two may be translated into: $A \in \text{SO}(Q')$ and $y = Q'(w)$, which proves the fact. One may prove along the same

lines that N^- is the stabilizer of the vector $\begin{pmatrix} 0 \\ \vdots \\ 0 \\ 1 \end{pmatrix}$.

For the third claim, one shows that the product $N^-H = HN^-$ send v_0 to any isotropic vector $v = \begin{pmatrix} x_0 \\ \vdots \\ x_n \end{pmatrix} \in \mathcal{C} \setminus \{0\}$. Let $v' = \begin{pmatrix} x_1 \\ \vdots \\ x_{n-1} \end{pmatrix}$ and define the following matrix of N^- :

$$n^- = \begin{pmatrix} 1 & 0 & 0 \\ v' & Id & 0 \\ Q'(v') & 2^tv' & 1 \end{pmatrix}.$$

Then $n^-(v_0) = \begin{pmatrix} 1 \\ v' \\ Q'(v') \end{pmatrix}$. Now v is isotropic, i.e. $Q(v) = x_0x_n - Q'(v') = 0$, so $x_0x_n = Q'(v')$. It remains to consider the following matrix of H :

$$h = \begin{pmatrix} x_0 & 0 & 0 \\ 0 & Id & 0 \\ 0 & 0 & \frac{1}{x_0} \end{pmatrix}.$$

It verifies $hn^-(v_0) = v$.

We may conclude: let g be an element of $\text{SO}(Q)$ and choose two elements n^- and h such that $n^-h(v_0) = g(v_0)$. Then $(n^-h)^{-1}g$ fixes v_0 . So it belongs to N^+ and g belongs to n^-hN^+ . \square

REFERENCES

- [BC91] J.-F. Boutot and H. Carayol, *Uniformisation p -adique des courbes de Shimura: les th eor emes de Cerednik et de Drinfel'd*, Ast erisque (1991), no. 196-197, 7, 45–158, Courbes modulaires et courbes de Shimura (Orsay, 1987/1988).

- [Bea99] A. F. Beardon, *The Klein, Hilbert and Poincaré metrics of a domain*, J. Comput. Appl. Math. **105** (1999), no. 1-2, 155–162, Continued fractions and geometric function theory (CONFUN) (Trondheim, 1997).
- [Ben08] Yves Benoist, *A survey on divisible convex sets*, Geometry, analysis and topology of discrete groups, Adv. Lect. Math. (ALM), vol. 6, Int. Press, Somerville, MA, 2008, pp. 1–18.
- [dlH93] Pierre de la Harpe, *On Hilbert’s metric for simplices*, Geometric group theory, Vol. 1 (Sussex, 1991), London Math. Soc. Lecture Note Ser., vol. 181, Cambridge Univ. Press, Cambridge, 1993, pp. 97–119.
- [GI63] O. Goldman and N. Iwahori, *The space of \mathfrak{p} -adic norms*, Acta Math. **109** (1963), 137–177.
- [Hil95] D. Hilbert, *Ueber die gerade Linie als kürzeste Verbindung zweier Punkte*, Math. Ann. **46** (1895), 91–96.
- [O’M00] O. Timothy O’Meara, *Introduction to quadratic forms*, Classics in Mathematics, Springer-Verlag, Berlin, 2000, Reprint of the 1973 edition.
- [Ser03] Jean-Pierre Serre, *Trees*, Springer Monographs in Mathematics, Springer-Verlag, Berlin, 2003, Translated from the French original by John Stillwell, Corrected 2nd printing of the 1980 English translation.
- [Ver05] Constantin Vernicos, *Introduction aux géométries de Hilbert*, Actes de Séminaire de Théorie Spectrale et Géométrie. Vol. 23. Année 2004–2005, Sémin. Théor. Spectr. Géom., vol. 23, Univ. Grenoble I, Saint, 2005, pp. 145–168.

IMJ, PARIS 6, 4 PLACE JUSSIEU, 75005 PARIS. AGUILLOU@MATH.JUSSIEU.FR