



HAL
open science

An experimental and theoretical investigation on pentacoordinated cobalt(III) complexes with an intermediate $S=1$ spin state: How halide ligands affect their magnetic anisotropy

Deborah Brazzolotto, Marcello Gennari, Shengying Yu, Jacques Pecaut, Mathieu Rouzieres, Rodolphe Clérac, Maylis Orio, Carole Duboc

► To cite this version:

Deborah Brazzolotto, Marcello Gennari, Shengying Yu, Jacques Pecaut, Mathieu Rouzieres, et al.. An experimental and theoretical investigation on pentacoordinated cobalt(III) complexes with an intermediate $S=1$ spin state: How halide ligands affect their magnetic anisotropy. *Chemistry - A European Journal*, 2015, 22 (3), pp.925-933. 10.1002/chem.201502997 . hal-01366392

HAL Id: hal-01366392

<https://hal.science/hal-01366392v1>

Submitted on 20 Dec 2023

HAL is a multi-disciplinary open access archive for the deposit and dissemination of scientific research documents, whether they are published or not. The documents may come from teaching and research institutions in France or abroad, or from public or private research centers.

L'archive ouverte pluridisciplinaire **HAL**, est destinée au dépôt et à la diffusion de documents scientifiques de niveau recherche, publiés ou non, émanant des établissements d'enseignement et de recherche français ou étrangers, des laboratoires publics ou privés.

CHEMISTRY

A **European** Journal

Supporting Information

An Experimental and Theoretical Investigation on Pentacoordinated Cobalt(III) Complexes with an Intermediate $S = 1$ Spin State: How Halide Ligands Affect their Magnetic Anisotropy

Deborah Brazzolotto,^[a] Marcello Gennari,^[a] Shengying Yu,^[a] Jacques Pécaut,^[b] Mathieu Rouzières,^[c, d] Rodolphe Clérac,^[c, d] Maylis Orio,^{*[e]} and Carole Duboc^{*[a]}

chem_201502997_sm_miscellaneous_information.pdf

Supporting Information

Table S1. Summary of X-ray crystallographic data for **CoBr** and **CoI**.

	CoBr	CoI
Empirical formula	C ₃₈ H ₃₀ CoN ₂ S ₂ Br	C ₃₈ H ₃₀ CoN ₂ S ₂ I
Formula weight	717.60	764.59
Color, habit	Dark brown, plate	Dark brown, plate
Crystal size, mm	0.62x0.26x0.01	0.27x0.22x0.01
Crystal system	Monoclinic	Monoclinic
Space group	<i>P</i> 2 ₁ / <i>c</i>	<i>P</i> 2 ₁ / <i>c</i>
<i>a</i> , Å	14.5871(8)	14.783(2)
<i>b</i> , Å	14.9087(5)	14.9433(7)
<i>c</i> , Å	15.9418(8)	16.0542(14)
α deg.	90	90
β, deg.	113.697(6)	113.108(4)
γ, deg.	90	90
<i>V</i> , Å ³	3174.6(3)	3261.9(7)
<i>Z</i>	4	4
<i>T</i> , K	150(2)	150(2)
ρ (calc), Mg/m ³	1.501	1.557
μ, mm ⁻¹	1.962	1.631
θ range, deg.	3.07 to 30.51	2.91 to 26.37
No. of rflcn/obsv	33301 / 9677 (0.1000)	27360 / 6665 (0.1822)
GooF	1.000	1.024
<i>R</i> 1	0.0604	0.0985
<i>wR</i> 2	0.0970	0.1871

Table S2. Structural properties of optimized structures of CoCl.

	CoCl (X-ray)	CoCl (gaz phase)	CoCl (relativistic)	CoCl (solvation)	CoCl (dispersion)
Co-S1	2.196	2.223	2.215	2.235	2.192
Co-S2	2.206	2.243	2.232	2.234	2.217
Co-N1	1.992	2.004	2.023	1.994	1.958
Co-N2	2.027	2.022	2.040	2.007	1.974
Co-X	2.334	2.348	2.334	2.428	2.324
Maximum dev.	-	0.038	0.031	0.094	0.053
Average dev.	-	0.019	0.018	0.037	0.022
S1-Co-S2	78.4	80.4	80.6	80.3	79.3
S1-Co-N1	92.6	90.2	91.8	91.4	90.7
S1-Co-N2	142.2	143.8	148.3	146.4	142.2
S2-Co-N1	163.7	157.8	161.4	160.4	161.9
S2-Co-N2	97.7	95.6	95.6	95.6	97.1
N1-Co-N2	81.0	80.1	81.9	81.5	81.4
S1-Co-X	118.8	120.7	117.4	117.2	120.0
S2-Co-X	104.6	109.2	106.0	106.9	105.4
N1-Co-X	91.6	92.9	92.6	92.7	92.7
N2-Co-X	98.7	94.8	94.0	95.9	97.4
Maximum dev.	-	5.9	6.2	4.2	1.9
Average dev.	-	2.7	2.3	2.1	1.0

Table S3. Structural properties of optimized structures of **CoBr**.

Calc. (solv)	CoBr (X-ray)	CoBr (gaz phase)	CoBr (relativistic)	CoBr (solvation)	CoBr (dispersion)
Co-S1	2.190	2.220	2.214	2.228	2.187
Co-S2	2.198	2.240	2.187	2.229	2.214
Co-N1	1.993	2.003	1.957	1.994	1.957
Co-N2	2.022	2.022	1.972	2.004	1.972
Co-X	2.489	2.513	2.479	2.604	2.479
Maximum dev.	-	0.042	0.050	0.115	0.050
Average dev.	-	0.021	0.026	0.041	0.023
S1-Co-S2	78.6	80.5	79.4	80.5	79.4
S1-Co-N1	93.0	91.6	91.0	91.6	91.0
S1-Co-N2	143.5	147.3	143.2	147.3	143.2
S2-Co-N1	164.7	160.7	162.3	160.7	162.3
S2-Co-N2	98.1	95.5	97.1	95.5	97.1
N1-Co-N2	80.9	81.6	81.7	81.6	81.7
S1-Co-X	118.3	117.1	120.0	117.1	120.0
S2-Co-X	103.6	106.6	105.3	106.6	105.3
N1-Co-X	92.0	92.7	92.4	92.7	92.4
N2-Co-X	97.9	95.2	96.4	95.2	96.4
Maximum dev.	-	3.8	2.4	3.8	2.4
Average dev.	-	2.2	1.3	2.2	1.3

Table S4. Structural properties of optimized structures of **Col**.

Calc. (solv)	Col (X-ray)	Col (gaz phase)	Col (relativistic)	Col (solvation)	Col (dispersion)
Co-S1	2.178	2.216	2.209	2.222	2.180
Co-S2	2.187	2.238	2.180	2.224	2.209
Co-N1	1.985	1.998	1.955	1.991	1.968
Co-N2	2.017	2.025	1.968	2.000	1.955
Co-X	2.694	2.750	2.718	2.848	2.718
Maximum dev.	-	0.051	0.049	0.154	0.062
Average dev.	-	0.033	0.028	0.052	0.025
S1-Co-S2	78.9	79.8	79.5	80.6	79.5
S1-Co-N1	93.9	90.8	91.2	91.8	91.2
S1-Co-N2	145.	142.6	144.2	148.3	144.2
S2-Co-N1	165.6	161.4	163.0	161.4	163.0
S2-Co-N2	98.2	96.9	97.2	95.6	97.2
N1-Co-N2	80.6	80.8	81.9	81.9	81.9
S1-Co-X	118.4	123.2	119.3	117.4	119.3
S2-Co-X	101.9	106.9	104.2	106.0	104.2
N1-Co-X	92.5	91.7	92.7	92.6	92.7
N2-Co-X	95.7	93.6	96.2	94.0	96.2
Maximum dev.	-	4.8	2.7	4.2	2.7
Average dev.	-	2.5	1.3	2.2	1.3

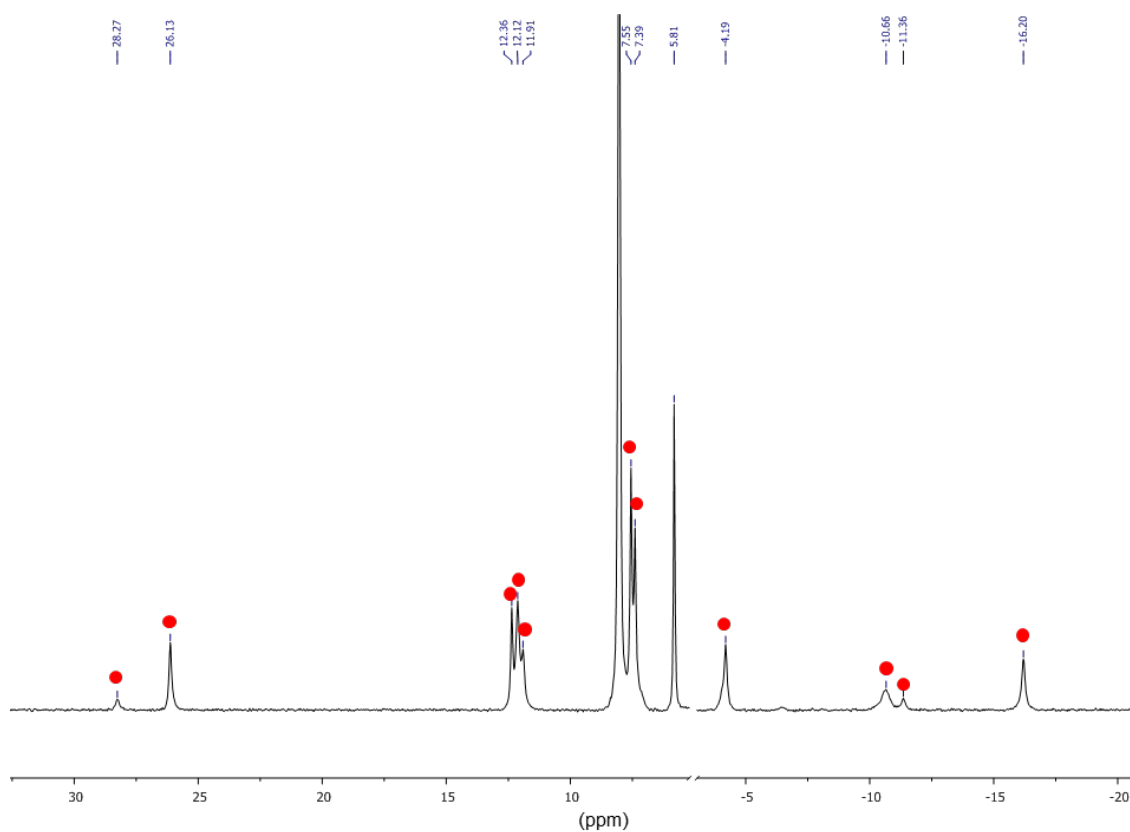


Figure S1. ^1H NMR spectrum of a d_7 -DMF solution of **CoBr** (protons belonging to **CoBr** are evidenced by a ■).

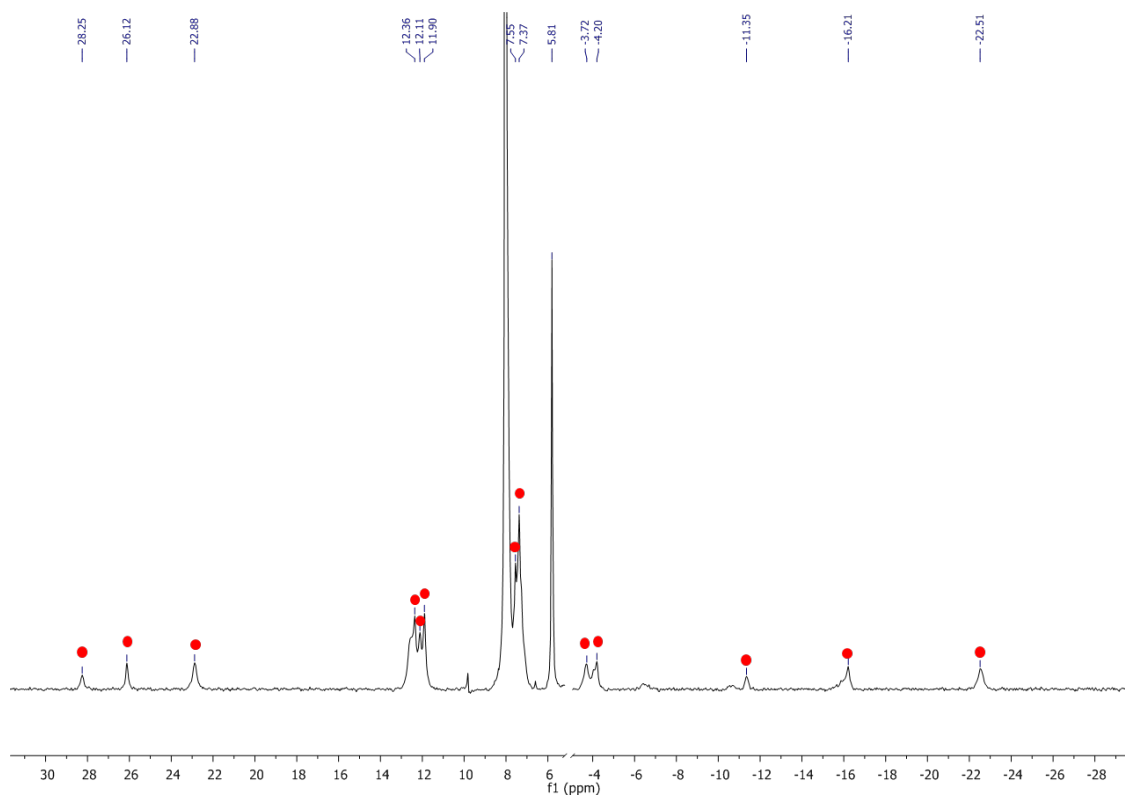


Figure S2. ^1H NMR spectrum of a d_7 -DMF solution of **CoI** (protons belonging to **CoI** are evidenced by a ■).

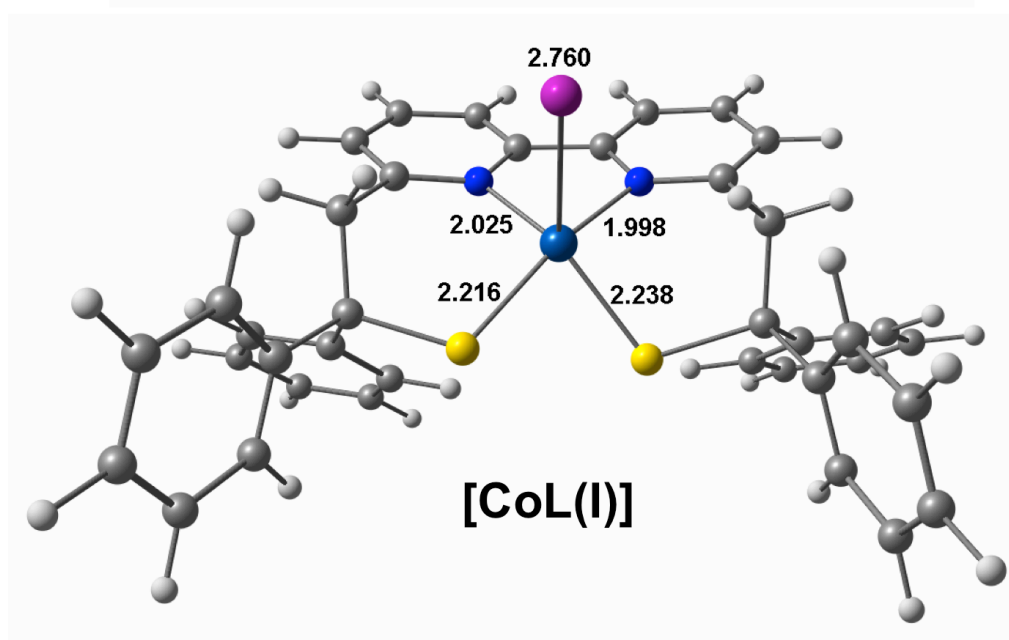
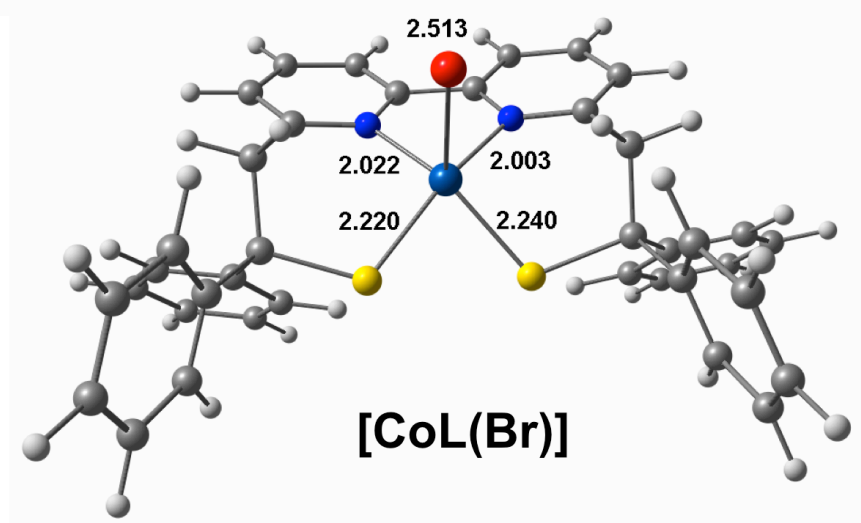
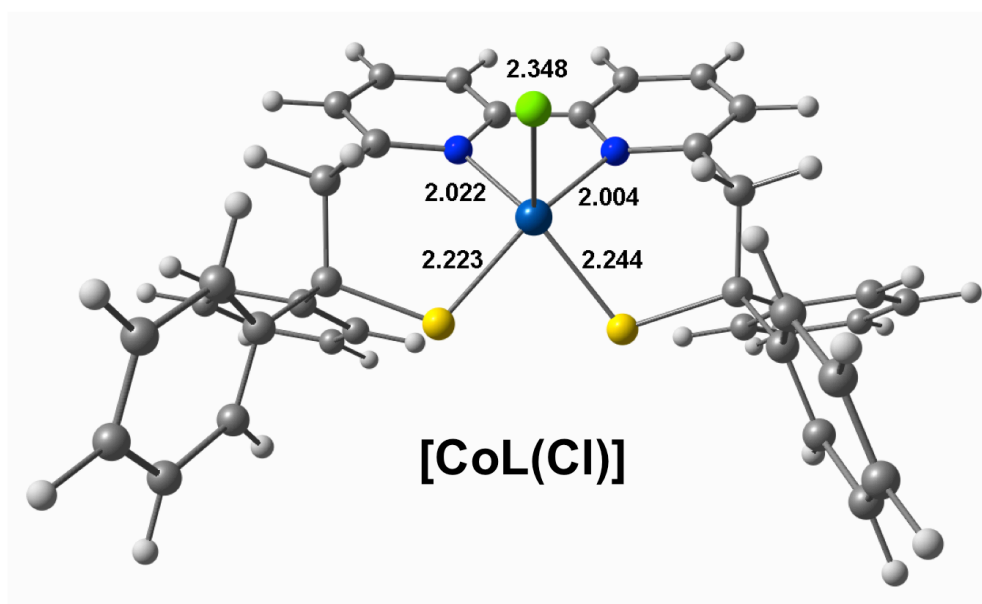


Figure S3. Optimized structures of **CoX** (X = Cl, Br, I).

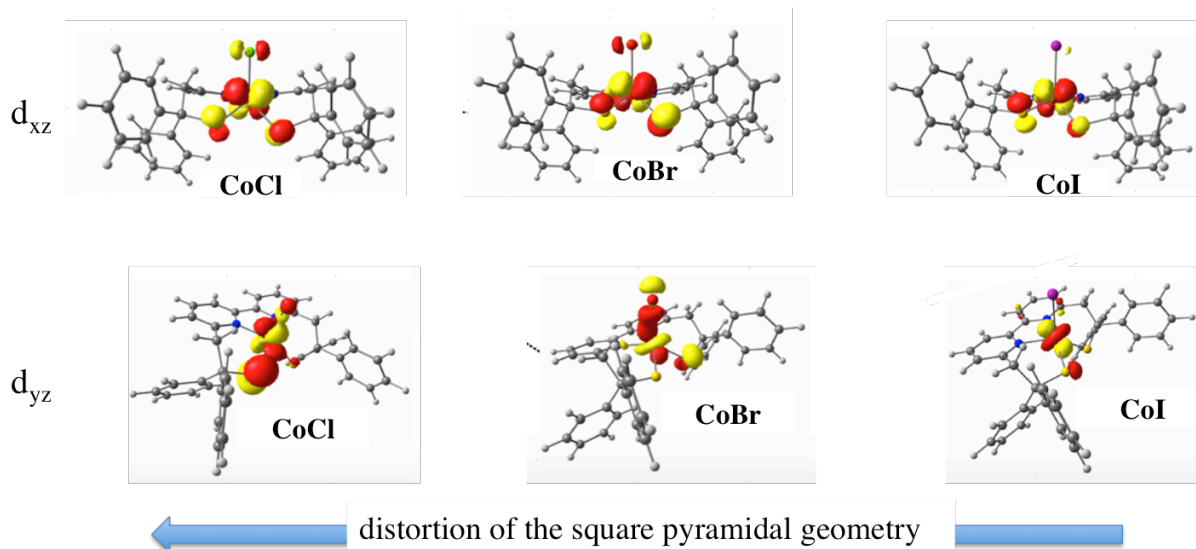


Figure S4. Representation of the two DOMOs of **CoX** with X = Cl, Br and I.

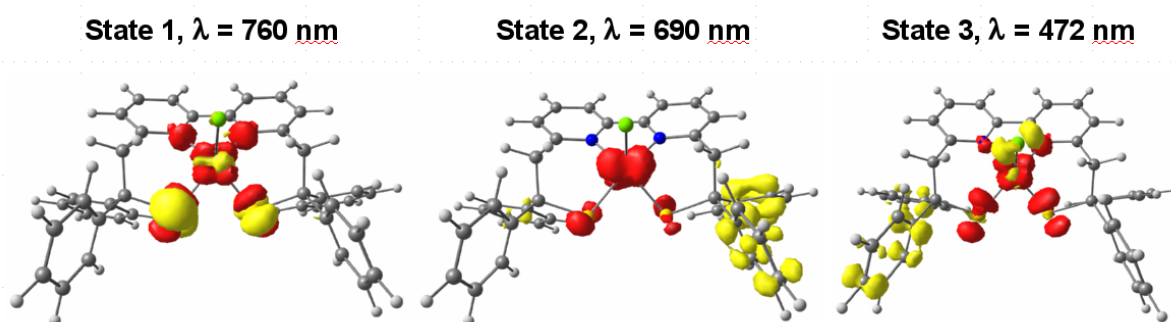


Figure S5. Difference electron density sketches of TD-DFT calculated transitions for **CoCl**.

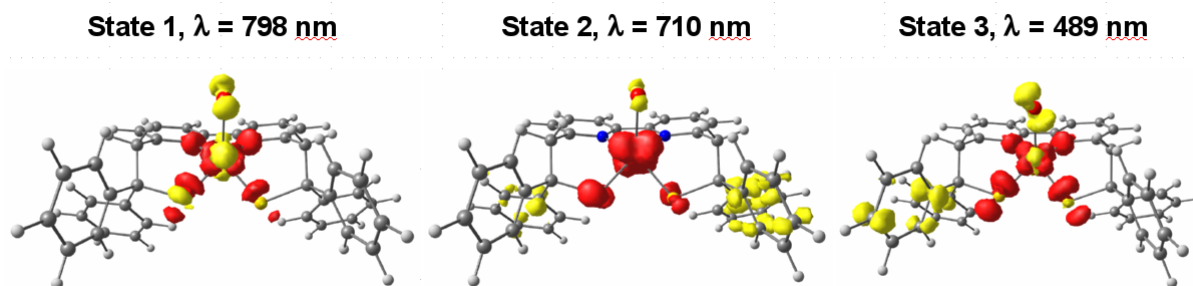


Figure S6. Difference electron density sketches of TD-DFT calculated transitions for **CoBr**.

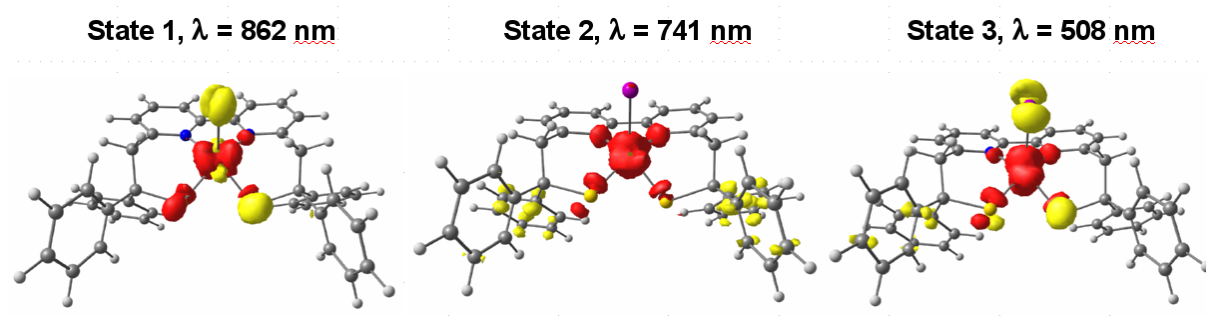


Figure S7. Difference electron density sketches of TD-DFT calculated transitions for **Col**.