



HAL
open science

Mapping a Knowledge-Based Malaria Hazard Index Related to Landscape Using Remote Sensing: Application to the Cross-Border Area between French Guiana and Brazil

Zhichao Li, Emmanuel Roux, Nadine Dessay, Romain Girod, Aurelia Stefani,
Mathieu Nacher, Adrien Moiret, F. Seyler

► **To cite this version:**

Zhichao Li, Emmanuel Roux, Nadine Dessay, Romain Girod, Aurelia Stefani, et al.. Mapping a Knowledge-Based Malaria Hazard Index Related to Landscape Using Remote Sensing: Application to the Cross-Border Area between French Guiana and Brazil. *Remote Sensing*, 2016, 8 (4), 10.3390/rs8040319 . hal-01355255

HAL Id: hal-01355255

<https://hal.science/hal-01355255v1>

Submitted on 22 Aug 2016

HAL is a multi-disciplinary open access archive for the deposit and dissemination of scientific research documents, whether they are published or not. The documents may come from teaching and research institutions in France or abroad, or from public or private research centers.

L'archive ouverte pluridisciplinaire **HAL**, est destinée au dépôt et à la diffusion de documents scientifiques de niveau recherche, publiés ou non, émanant des établissements d'enseignement et de recherche français ou étrangers, des laboratoires publics ou privés.

Article

Mapping a Knowledge-Based Malaria Hazard Index Related to Landscape Using Remote Sensing: Application to the Cross-Border Area between French Guiana and Brazil

Zhichao Li ^{1,*}, Emmanuel Roux ^{1,*}, Nadine Dessay ¹, Romain Girod ², Aurélia Stefani ³, Mathieu Nacher ³, Adrien Moiret ¹ and Frédérique Seyler ¹

¹ ESPACE-DEV, UMR 228 IRD/UM/UR/UG, Institut de Recherche pour le Développement, 500 rue Jean-François Breton, Montpellier 34000, France; nadine.dessay@ird.fr (N.D.); adrienmoiret@gmail.com (A.M.); Frederique.Seyler@ird.fr (F.S.)

² Unité d'Entomologie Médicale, Institut Pasteur de la Guyane, 23 Avenue Pasteur BP 6010, Cayenne Cedex 97306, French Guiana; rgirod@pasteur-cayenne.fr

³ EPaT Team (EA 3593), UFR de Médecine—Université des Antilles et de la Guyane, Cayenne Cedex 97336, French Guiana; aurelia.stefani@gmail.com (A.S.); mathieu.nacher66@gmail.com (M.N.)

* Correspondence: zhichao.li@teledetection.fr (Z.L.); emmanuel.roux@ird.fr (E.R.); Tel.: +33-467-415125 (Z.L. & E.R.)

Academic Editors: Zhong Lu and Prasad S. Thenkabail

Received: 8 February 2016; Accepted: 7 April 2016; Published: 11 April 2016

Abstract: Malaria remains one of the most common vector-borne diseases in the world and the definition of novel control strategies can benefit from the modeling of transmission processes. However, data-driven models are often difficult to build, as data are very often incomplete, heterogeneous in nature and in quality, and/or biased. In this context, a knowledge-based approach is proposed to build a robust and general landscape-based hazard index for malaria transmission that is tailored to the Amazonian region. A partial knowledge-based model of the risk of malaria transmission in the Amazonian region, based on landscape features and extracted from a systematic literature review, was used. Spatialization of the model was obtained by generating land use and land cover maps of the cross-border area between French Guiana and Brazil, followed by computing and combining landscape metrics to build a set of normalized landscape-based hazard indices. An empirical selection of the best index was performed by comparing the indices in terms of adequacy with the knowledge-based model, intelligibility and correlation with *P. falciparum* incidence rates. The selected index is easy to interpret and successfully represents the current knowledge about the role played by landscape patterns in malaria transmission within the study area. It was significantly associated with *P. falciparum* incidence rates, using the Pearson and Spearman correlation coefficients (up to 0.79 and 0.75, respectively; p -value < 0.001), and the linear regression coefficient of determination (reaching 0.63; p -values < 0.001). This study establishes a spatial knowledge-driven, landscape-based hazard malaria index using remote sensing that can be easily produced on a regular basis and might be useful for malaria prediction, surveillance, and control.

Keywords: remote sensing; land use and land cover; landscape metric; knowledge-based hazard modeling; malaria; cross-border area between French Guiana and Brazil

1. Introduction

Malaria is one of the most common vector-borne diseases in the world, with an estimated 214 million new cases and 438,000 deaths in 2015 [1]. The area of transmission mostly covers tropical and subtropical zones. In the Americas, the Amazonian region, which extends over nine countries

(Bolivia, Brazil, Colombia, Ecuador, France/French Guiana, Guyana, Peru, Suriname, and Venezuela), is the most affected by the disease. Among these countries, Brazil accounted for 42% of malaria cases and half of the deaths in the Americas (390,000 cases and 79 deaths) in 2014 [1].

The international borders of Brazil exhibit particularly critical conditions, cumulating health, socio-demographic, environmental, and political issues [2]. The cross-border area between French Guiana and the Brazilian state of Amapá (Figure 1) is symptomatic of such conditions that constitute an obstacle for malaria elimination [3]. Identifying, characterizing, and mapping malaria risk factors are of primary importance in order to better target control strategies and anticipate possible recrudescence of malaria due to environmental and socio-demographic changes and to the development of possible drug and insecticide resistance [4].

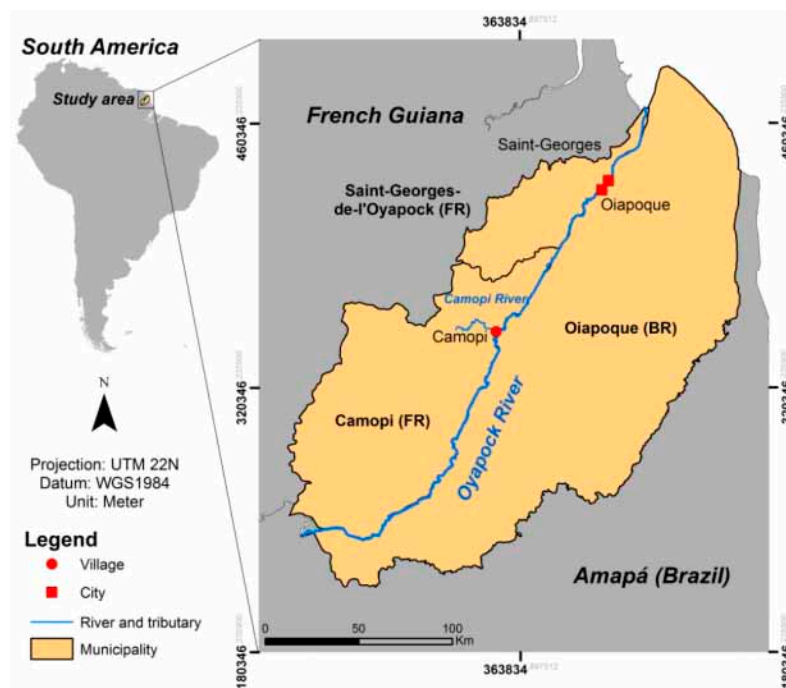


Figure 1. The cross-border area between French Guiana and Brazil.

Anopheles darlingi is considered as the principal vector of malaria in the Amazon region [5]. This species plays an evident role in malaria transmission in the Amapá State and in French Guiana, even if other species could be involved locally [6–8]. Its breeding sites are mainly the riverbanks and flooded areas, and the females usually exhibit a marked anthropophilic and exophilic behavior [9]. Moreover, the species shows a high efficiency in malaria transmission through high biting rates, susceptibility to *Plasmodium* infection and capacity to easily adapt to environmental changes due to human activities [5,9]. Natural and human-driven environmental changes, such as climate variability [10–13] and land use and land cover (LULC) changes [13–19], can determine the malaria distribution by influencing the habitats of adults and larvae. Prevention and treatment measures [20] and mobility of humans infected by *Plasmodium* [4,15] also influence such distribution.

Malaria risk mapping is traditionally obtained through various statistical techniques and data-driven modeling [5,12,13,16,21–26]. Such models are often either very specific or very general, as they are generated from data characterizing either local scale contexts at high resolutions, preventing obtaining reproducible results and to describe or predict large scale phenomena [23], or large scale contexts at low resolutions, preventing the ability to precisely describe disease transmission mechanisms [5,12,16]. Moreover, the necessary data are often incomplete and highly biased and, consequently, insufficient quantitatively and qualitatively for data-driven approaches [27,28], especially in these remote areas where epidemiological, entomological, and environmental monitoring are

inefficient and/or irregular. Finally, cross-border contexts provide very heterogeneous data in terms of nature and quality, due to differences in acquisition protocols, health policies, and/or peoples' behaviors in each country, making data-driven modeling approaches difficult to utilize.

Under such constrained circumstances, knowledge-based risk mapping appears particularly relevant. The review by Stevens *et al.* [29] emphasizes that knowledge-based risk mapping could provide a pertinent framework for modeling qualitative and quantitative variables in data-sparse contexts, integrating statistical methods and expert knowledge concerning vectors, reservoirs, and humans, and/or their interactions. Garni *et al.* [30] established hazard maps (*i.e.*, presence of both vectors and reservoirs) using expert and bibliographic knowledge and remote sensing data, and combining them with vulnerability maps for mapping the risk of occurrence of cutaneous leishmaniasis in Ghardaïa in Algeria. Vector habitat and risk maps were established using available entomological and epidemiological data. De Glanville *et al.* [28] predicted the suitability for African swine fever (ASF) endemicity in Africa using multi-criteria decision analysis, and validated its performance via statistical methods using available ASF outbreak data. Stefani *et al.* did a systematic review of the literature [14], and proposed a consensual knowledge-based model that qualitatively estimates the level of malaria transmission risk in the Amazon in relation to deforestation patterns. Knowledge-based risk modeling can elaborate the relationship between malaria vectors and environmental variables, explain interactions between environmental changes and vector dynamics, and provide a knowledge base to demonstrate how the environment affects malaria transmission [31]. In addition, knowledge-based risk modeling requires decomposing the malaria risk into independent factors easier to apprehend and quantify. The decomposition is a particularly tricky issue, especially when highly anthropophilic vectors (like *An. darlingi*) are involved, since the presence and the vector density strongly depend on the presence and the density of human beings. Stefani *et al.* did a systematic review of the literature [14], and proposed a consensual knowledge-based model that qualitatively estimates the level of malaria transmission risk in the Amazon in relation to deforestation patterns. More precisely, this model demonstrated that landscape features play a key role in the malaria risk construction, by generating more or less favorable conditions for the encounter between mosquitoes and human beings. In this study, it is assumed that the contribution of landscape features (*i.e.*, to what extent the landscape is a "factor of danger" in the context of malaria) can be separately assessed.

Landscape metrics are widely used to analyze landscape features for many studies related to landscape. Uuemaa *et al.* [32] showed that landscape metrics are appropriate for detecting by remote sensing data the changes in landscape composition and configuration caused by deforestation and forest fragmentation. In the framework of disease transmission, Ostfeld *et al.* [33] stated that landscape structure has "a strong potential to influence disease dynamics through impacts on both abiotic conditions and species interactions that are important to disease spread and prevalence". More specifically, the analysis of landscape structure permits to predict the presence of anopheline mosquitoes and shows that landscape management could be used for malaria control [34].

In this context, focusing on the relationship between landscape features and malaria transmission, the present paper proposes to perform the spatialization of the knowledge-based model in order to build a landscape-based malaria transmission hazard index. The method consisted of materializing the knowledge-based model through computation and combination of landscape metrics, using LULC maps derived from remote sensing images. The approach was applied to the cross-border region between French Guiana and Brazil and was evaluated using available malaria incidence data.

2. Materials and Methods

2.1. Study Area

The study was carried out in the cross-border region between French Guiana and Brazil, including the French municipalities of Camopi and Saint-Georges-de-l'Oyapock, which are located on the western bank of the Oyapock River that delimits the international border between French Guiana and Brazil,

and the Brazilian municipality of Oiapoque on the eastern bank of the river (Figure 1). According to the French National Institute of Statistics and Economic Studies (INSEE), Saint-Georges-de-l'Oyapock and Camopi had 3946 and 1645 inhabitants, respectively, in 2011 [35,36], whereas Oiapoque had 20,509 inhabitants in 2010, according to the Brazilian Institute of Geography and Statistics (IBGE) [37]. The climate in the study area is typically tropical, with an average annual temperature of 27 °C and humidity $\geq 80\%$. There are four seasons in the region, the long rainy season from April to June, the long dry season from July to November, the short rainy season from December to February, and the short dry season in March. The average annual precipitation is about 2500 mm in Camopi, 3400 mm in Saint-Georges-de-l'Oyapock, and 3300 mm in Oiapoque.

The Saint-Georges-de-l'Oyapock municipality consists of the city of Saint-Georges-de-l'Oyapock and several rural hamlets. Agricultural practices include traditional slash-and-burn agriculture with small plots and cattle farming. The Camopi municipality includes the village of Camopi (with about 1200 inhabitants in a main central hamlet and 28 hamlets within a 15 km² area, situated along the Oyapock and the Camopi Rivers) and Trois-Sauts (composed by 10 hamlets on the upper Oyapock River). The resident population of Camopi and Trois-Sauts is mainly composed of Amerindians (Wayampi and Teko ethnic groups). Most of the inhabitants live in traditional houses, locally called "carbets", which are made of wood with a roof of palm leaves, steel sheet, or tarpaulin. The main subsistence activities are hunting, fishing, slash-and-burn agriculture, and the gathering of forest products. On the French side, there are (legal and illegal) gold mining activities that lead to various degree of deforestation and the installation of semi-permanent human structures. On the Brazilian side, the Oiapoque municipality consists of the main city (Oiapoque) with a relatively high level of urbanization, and several rural localities. Agricultural practices include traditional slash-and-burn agriculture with small plots and cattle farming, but also large plots created at the expense of the native dense forest. Several protected areas exist within this cross-border zone, but with different levels of protection and natural sites, generating different land use patterns [38].

In Camopi, the annual incidence of malaria has exceeded 50% among children less than seven year old in the early 2000s [10], and has even reached 100% in 2006 [39]. From 2006 to 2012, the total number of reported malaria cases from Camopi and Trois-Sauts, a village in the municipality of Camopi, began to decrease, with a sharp reduction starting in 2009 [40,41]. In Saint-Georges-de-l'Oyapock, the main French town at the border with Brazil, a significant increasing trend was observed for the total number of reported malaria cases from 2005 to 2009, with a peak in 2007 [40]. After 2009, an apparent decrease was also observed [40,41]. However, a global recrudescence of the number of malaria cases occurred in the inland region (Saül, Cacao, Régina) and Eastern French Guiana (Camopi and Saint-Georges-de-l'Oyapock), with a global incidence rate reaching 55.2 cases per 1000 inhabitants in 2013 [4]. On the other side of the border, Oiapoque is the most affected municipality of the State of Amapá, with about 3940 cases reported between January and October 2011, representing a 12% increase when compared to the same period in 2010 [42]. Despite a 22.9% decrease in the number of cases between 2011 and 2012, this number and the transmission risk remained high, with 2838 reported cases and a 9.2% Annual Parasite Index (API) in 2013 [43].

2.2. Knowledge-Based Model

From an ecological standpoint, the knowledge-based model (Figure 2) is likely to represent the following process [14,44] where: (i) deforested areas provide favorable conditions for malaria vector breeding and feeding; and (ii) forest and secondary forest can define resting sites for adult mosquitoes that return to the forest and secondary forest after feeding. Consequently, the more the forest and secondary forest patches interact with deforested patches (situation described in the bottom-right box of Figure 2), the more the landscape is favorable to vectors and vector-human being encounters. Indeed, such landscape tends to maximize the densities of vector breeding (larvae) and resting (adults) sites and facilitate host seeking by shortening the distances between resting sites and hosts, which are

preferentially human beings regarding the marked anthropophilic behavior of *An. darlingi*, the main malaria vector in the region.

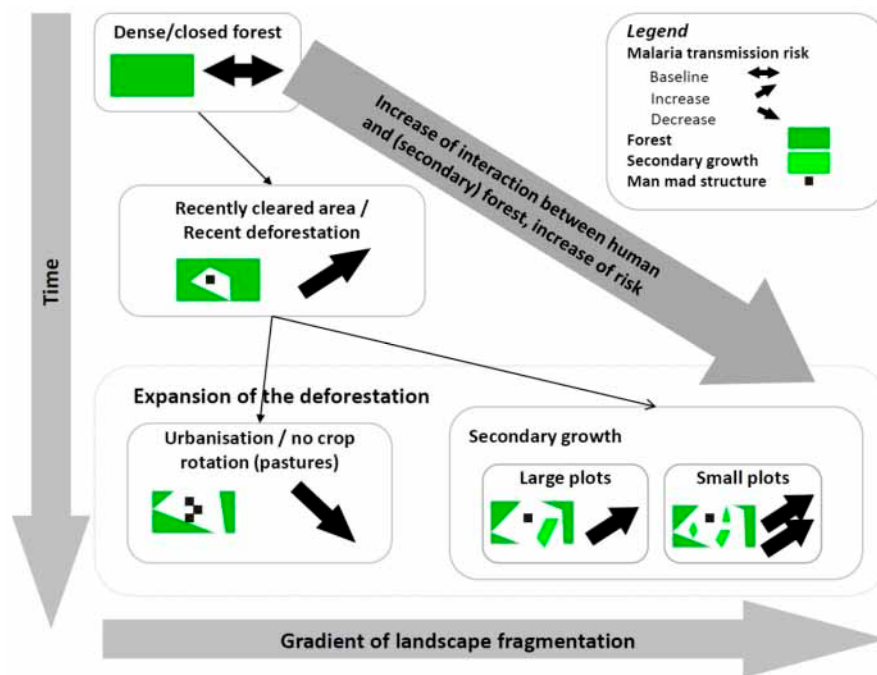


Figure 2. Knowledge-based model of malaria transmission risk associated with land use and land cover [14].

As such, this model provides a useful description of the role played by the landscape in the chance of encounters between humans and malaria vectors, and represents a solid foundation to build a landscape-based hazard index (*LHI*) related to malaria transmission. The *LHI* is related to two landscape features: a compositional one (*i.e.*, the relative surface occupied by forest and secondary forest); and a configurational one, involving the edge, shape, or subdivision of forest and secondary forest patches.

On the basis of the knowledge-based model, the *LHI* should: (i) correspond to a baseline level (the null value was chosen here) with no deforestation, *i.e.*, 100% forest and a minimum of configurational complexity (top box in Figure 2); (ii) range from “low” to “high” when human presence or activity is not null. Especially, the value of the hazard index should increase with an increase in configurational complexity for a given value of the proportion of forest and secondary forest (bottom-right box in Figure 2); and (iii) reach a null value when the anthropogenic pressure becomes the maximum as both the proportion of forest and secondary forest and the configurational complexity become null in this case (bottom-left box in Figure 2). Ultimately, the *LHI* should be intelligible and easy to interpret for public health managers who are not specialists in the area of landscape quantitative characterization and modeling.

2.3. Methodology of Model Implementation

The overall methodology is presented in Figure 3. The different steps are detailed hereafter.

Building the *LHI* requires the following steps: (1) the characterization of the LULC from satellite imagery. In this study, it is assumed that the different levels of deforestation observed at different locations in LULC map can represent the different stages of anthropization mentioned in the model. The model can, therefore, be implemented by using a static LULC characterization; (2) the computation of landscape metrics characterizing: (i) the relative surface occupied by forest and secondary forest; and (ii) the configurational complexity of forest and secondary forest; and (3) the combination of

the two landscape metrics in order to define a spatial index of landscape-based hazards linked to malaria transmission.

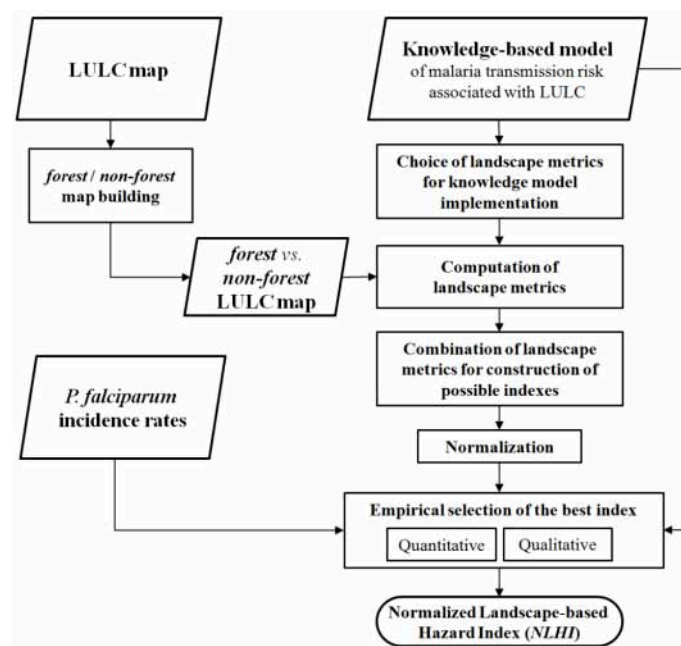


Figure 3. Summarized methodology for mapping a knowledge-based malaria hazard index related to the landscape.

2.3.1. Land Use and Land Cover Mapping

As described in the knowledge-based model, the LULC map composed of two classes, *forest* or *secondary forest* and *non-(forest or secondary forest)*, is required. Such a map was derived from an already available and more detailed LULC characterizations produced for various applications (biodiversity assessment, anthropogenic disturbance studies, malaria, etc.). The detailed LULC characterizations were based on two color SPOT 5 satellite images acquired on 17 October 2009 and 14 October 2012, and covering the village of Camopi and the areas of Saint-Georges-de-l'Oyapock and Oiapoque, respectively. Each image consists of four spectral bands (green, red, near infrared, and short-wave infrared) with 10 m spatial resolution. The initial LULC characterizations were based on a combination of unsupervised and supervised classifications, using ENVI 5.1 software. K-means clustering was carried out to extract clouds, cloud shadows, and water as they could be mistaken for other classes (see below) and were manually corrected by delineating their borders. Then, the identification and selection of training data were identified and selected by the visual interpretation of satellites images. The initial spectral bands and several textural bands (mean, homogeneity, entropy, second moment, and correlation) were applied together for implementing the Support Vector Machine (SVM) method. The definitive classes were: (1) *bare soil or building or road clouds*; (2) *cloud shadows*; (3) *clouds*; (4) *flooded forest (Varzea)*; (5) *forest*; (6) *gold mining areas*; (7) *herbaceous vegetation (pasture)*; (8) *intermedian vegetation (old fellow)*; (9) *low vegetation and traditional slash-and-burn agriculture*; (10) *mangrove*; (11) *savannah or rock outcrop*; (12) *treeless wetland*; (13) *vase*; and (14) *water*. The two LULC maps are represented in Figure 4.

In order to implement the knowledge-based model, the two initial LULC maps were post-processed with the following procedures: (i) *forest*, *flooded forest (Varzea)*, and *mangrove* were fused and simply denoted as *forest* hereafter; and (ii) all the other LULC classes were fused and simply denoted as *non-forest* hereafter. Clouds and cloud shadows caused data missing in LULC maps which were set to *NoData* and were not involved in landscape metric calculation.

The two post-processed maps were evaluated by randomly choosing 50 sites in each class (*forest* and *non-forest*) and establishing the actual land cover of the selected sites by photo-interpretations

of the 2.5-meter spatial resolution SPOT images resulting from the fusion of the color (used for initial classification) and panchromatic modes. Overall classification accuracies were of 0.94 and 0.93 for the maps of Camopi and Saint-Georges-de-l'Oyapock regions, respectively. Accuracies (true positive rate) for the *forest* class (*non-forest* class) were 0.91 (0.98) and 0.92 (0.94), for Camopi and Saint-Georges-de-l'Oyapock scenes, respectively. Eventually, *Kappa* coefficients were of 0.88 and 0.86, respectively.

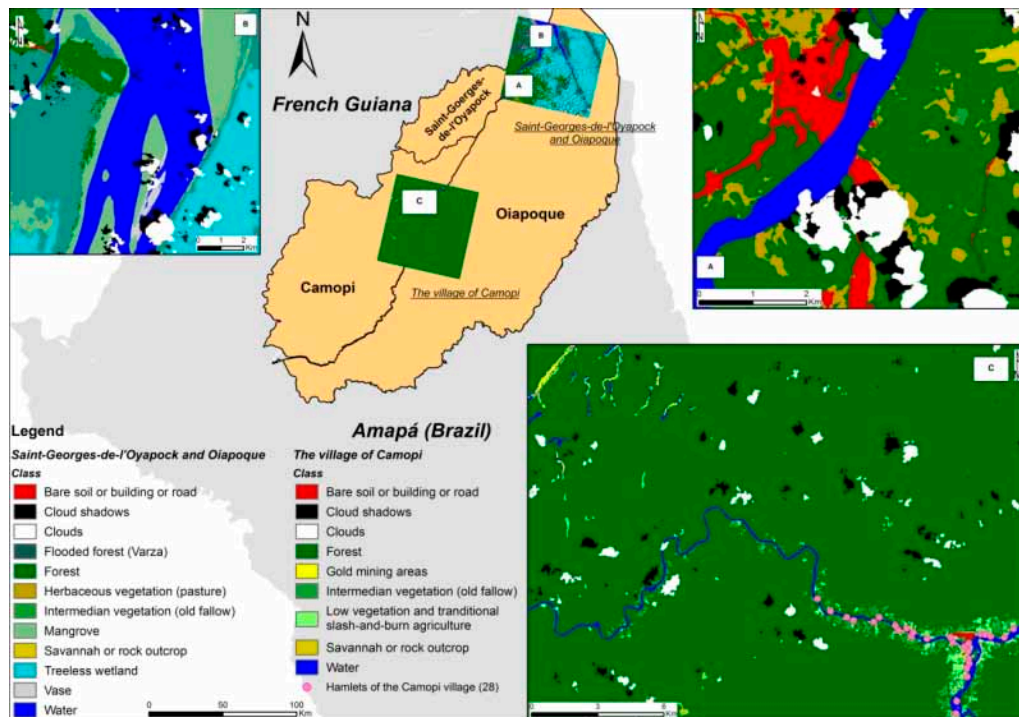


Figure 4. Land use and land cover characterizations of the study area.

2.3.2. Landscape Metric Computation

The relative surface of the *forest*, referred to as pF , was simply obtained by computing the percentage of *forest* in the computation window (see below for the definition of computation window) (see [45] and Table 1). The landscape configuration is a broader and vague notion related to several metrics (see [45] and Table 1): edge density (ED), patch density (PD), landscape division index ($DIVISION$), splitting index ($SPLIT$), perimeter-area ratio ($PARA$), shape index ($SHAPE$), fractal dimension index ($FRAC$), related circumscribing circle ($CIRCLE$), and contiguity index ($CONTIG$).

Moreover, $PARA$, $SHAPE$, $FRAC$, $CIRCLE$, and $CONTIG$ were initially computed at the patch level, and then the summary statistics were computed to provide a metric value at the landscape level. Mean (MN) and area-weighted mean (AM) (with the patch areas as weights) were chosen as summary statistics, resulting in a total of 14 configurational metrics (CM): ED , PD , $DIVISION$, $SPLIT$, $PARA_{MN}$, $PARA_{AM}$, $SHAPE_{MN}$, $SHAPE_{AM}$, $FRAC_{MN}$, $FRAC_{AM}$, $CIRCLE_{MN}$, $CIRCLE_{AM}$, $CONTIG_{MN}$, and $CONTIG_{AM}$.

The quantitative landscape characterization, based on *forest vs. non-forest* maps, requires defining a spatial window for the metric computation. Around any location in the study area (*i.e.*, around any pixel in the *forest vs. non-forest* maps), such a window corresponds to a zone where the landscape characteristics are the most likely to influence the chance of encounter of anopheles mosquitoes with human beings. While a discoidal window intuitively seems the most appropriate, the choice of the disk radius is not trivial. Stefani *et al.* used a data-driven selection for the optimal radius of the discoidal window to explain the malaria incidence rates in the village of Camopi, and concluded that the optimal

radius was 400 m for the *P. falciparum* and 100 m for the *P. vivax* incidence rates [46]. However, it was shown that *P. vivax* incidence was poorly correlated to the landscape features in comparison with *P. falciparum* incidence, suggesting that the *P. vivax* relapses were not correctly identified [46]. Therefore, only the *P. falciparum* incidence rates were used in the present study and the computation window was defined as a moving discoidal window with a 400 m radius. The computation of all the metrics was performed with the *forest vs. non-forest* raster grid as the input (the pixels being aligned with the ones of SPOT 5 image), a moving discoidal window of 400 m radius and an 8-connexity implementation of the algorithm, using FRAGSTATS software 4.2 (Amherst, MA, USA).

Table 1. Landscape metrics discussed in this study.

Metric (Abbreviation)	Description (Adapted from [45])	Units	Range
Percentage of forest (<i>pF</i>)	Percentage of <i>forest</i> in the computation window (ratio of <i>forest</i> area to area of computation window), multiplied by 100.	Percent	(0, 100)
Edge Density (<i>ED</i>)	Total length of <i>forest</i> edges in the computation window, per hectare.	Meters/hectare	≥ 0
Patch Density (<i>PD</i>)	Total number of patches of <i>forest</i> and <i>non-forest</i> in the computation window, per square meter.	Number/m ²	≥ 1.99
Landscape Division Index (<i>DIVISION</i>)	Probability that two randomly chosen pixels in the computation window are not situated in the same patch.	Proportion	(0, 1)
Splitting Index (<i>SPLIT</i>)	Number of patches one gets when dividing the computation window into parts of equal size in such a way that this new configuration leads to the same degree of landscape division as obtained for the observed landscape in the computation window.	No units	(1, number of cells in the landscape area squared)
Perimeter-area Ratio (<i>PARA</i>)	Simple ratio of patch perimeter to area for each patch in the computation window	No units	> 0
Shape Index (<i>SHAPE</i>)	Normalized ratio of patch perimeter to area in which the complexity of patch shape is compared to a square of the same size, for each patch in the computation window.	No units	≥ 1
Fractal Dimension Index (<i>FRAC</i>)	Normalized ratio of patch perimeter to area in which perimeter and area are log transformed. Reflecting shape complexity across a range of spatial scale (patch size), for each patch in the computation window.	No units	(1, 2)
Related Circumscribing Circle (<i>CIRCLE</i>)	Assessing shape based on the ratio of patch area to the area of the smallest circumscribing circle, for each patch in the computation window.	No units	(0, 1)
Contiguity Index (<i>CONTIG</i>)	Assessing patch shape based on the spatial connectedness, or contiguity, of cells within a patch, for each patch in the computation window. Large contiguous patches (small non-contiguous patches) result in low (high) configurational complexity. Note that this index corresponds to one minus the contiguity index as defined by Fragstats in order to be consistent with other complexity metrics.	No units	(0, 1)

2.3.3. Landscape-Based Hazard Index Construction

A set of *LHI* candidate measures that correspond to each of the different configurational metrics was computed using the *product* operator as conjunctive (logic AND) operator:

$$LHI = pF \times CM \quad (1)$$

The normalized Landscape-based Hazard Index (*NLHI*) was then defined for each *LHI*, varying from 0 (minimum) to 1 (maximum) for the study area:

$$NLHI = \frac{LHI - \min(LHI)}{\max(LHI) - \min(LHI)} \quad (2)$$

where $\min(LHI)$ and $\max(LHI)$ are the observed minimum and maximum values of the *LHI*, respectively, within the considered study area.

2.3.4. Qualitative Analysis

Some of the landscape metrics are often highly correlated among themselves [45,47,48]. The information content of the 14 CM was, therefore, analyzed by means of a Principal Component Analysis (PCA) for eliminating the redundant metrics among them. Moreover, the empirical behaviors of both the selected candidate CM and the associated *NLHI* were analyzed with regard to the criteria outlined in the *Knowledge-Based Model* section.

2.3.5. Quantitative Evaluation

In the absence of entomological data with sufficient temporal and spatial consistency with our LULC characterizations, the *NLHI* candidates were quantitatively evaluated using the incidence rate data at the hamlet level of the village of Camopi.

- Incidence rates

Malaria cases have been recorded since 1 January 2001 by following an open cohort study of children less than seven year old from the village of Camopi (see Stefani *et al.* [46], Hustache *et al.* [49] and Stefani *et al.* [10] for more details on this cohort). The *P. falciparum* incidence rates were computed for 28 of the 29 hamlets of the village of Camopi for the period of 2009–2013 (The *P. falciparum* incidence rates could not be computed for one hamlet because it did not include any children less than seven year old since 2009). In fact, 2009 corresponds to the acquisition year of the satellite image processed to produce the LULC map including the village of Camopi (see *Land use and land cover mapping* section). Considering the 2009–2013 period for the incidence computation instead of the year 2009 alone provided more robust incidence data. It was assumed that the deforestation rate, the agricultural practices, and the human settlements have not significantly changed during this period.

Using such epidemiological data to evaluate the candidate *NLHI* was done under the hypothesis that the *P. falciparum* incidence rates in Camopi are largely explained by the landscape features. As in Stefani *et al.* [46], the assumption is also made that the transmission is domiciliary, making it possible to link incidence rates to the dwellings and the environment features surrounding them; due to the small magnitude of the study area (15 km²), the spatial disparity of the incidence rates cannot be explained by climatic and/or major environmental disparities in space; finally, the children in the cohort share similar immunity levels and genetic susceptibility to malaria transmission [10]. However, according to Stefani *et al.* [10], the number of inhabitants in the home, the use of tropical repellents and domestic insecticides, the interventions of the county mosquito control services, and going to bed before 7:00 pm are protective factors against malaria transmission and can partially explain incidence rate disparities. In fact, we expect that the *NLHI* might predict the null or lower incidence rates with less accuracy than the higher ones, as the protective behaviors described above should make the incidence rates significantly lower, regardless of the landscape context. Thus, we defined two validation datasets by considering (i) all the hamlets of Camopi; and (ii) the hamlets exhibiting non-null incidence rates only.

- Computation of domiciliary *NLHI*

All households in the village of Camopi were geolocalized with the global positioning system (GPS)—Magellan eXplorist™ 600—or by digitalization from the aerial photographs of BD-ORTHO® [10,46]. For each *NLHI* candidate, the values were extracted for the locations of those households with at least one child less than seven year old included in the cohort, and then averaged at the hamlet level to explore the correlation between *NLHI* and *P. falciparum* incidence rates.

- Statistical relationship between incidence rates and candidate *NLHI*

The Pearson and Spearman correlation coefficients and the linear regression coefficient of determination between incidence rates, landscape metrics, and candidate *NLHI* were computed by considering either all the hamlets of Camopi or only those exhibiting non-null incidence rate values.

3. Results

3.1. Qualitative Analysis: Information Content Analysis of Configurational Metrics

PCA was applied to the pixels of a zone surrounding the village of Camopi in order to compare the information content of the 14 candidate CM. The zone contained more than 50% of the pixels of the entire *forest vs. non-forest* map of Camopi (more than 2 million pixels), permitting the consideration of all landscape contexts and provide robust PCA results. Figure 5, representing the first plane of the PCA results, shows that 83.86% of the total variance was explained by only two factorial axes, and that three groups of CM exhibited very high intra-group correlations: (i) *DIVISION* and *CIRCLE_AM*; (ii) *ED*, *PARA_AM*, and *CONTIG_AM*; and (iii) *CONTIG_MN* and *PARA_MN*. Figure 5 also shows that, although each metric was highly correlated to at least one other, some metrics appeared uncorrelated, such as *SHAPE_MN* and *CONTIG_MN* and, consequently, conveyed complementary information.

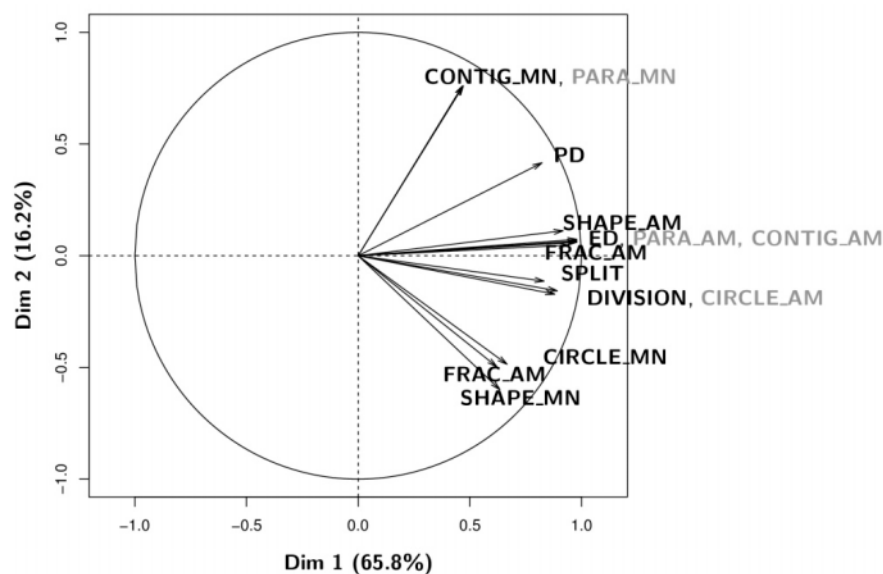


Figure 5. First factorial plane of Principal Component Analysis. Application to a uniformly random selection of a subset of pixels for the study zone and the configurational metrics. *_MN* and *_AM* suffixes are for the mean and area weighted mean statistics, respectively. Metrics represented in gray are not mentioned in the Results and Discussion sections due to their high correlation with others.

ED, *PARA_AM*, and *CONTIG_AM* are of particular interest as they were highly correlated with the first PCA axis (Dim 1) and appeared to be the most discriminating metrics, *i.e.*, the most likely to distinguish between different possible landscapes; they are located at a median position in the range of the metric coordinates on the second PCA axis (Dim 2) and, consequently, tend to realize a compromise of all the metrics regarding the information content. Among the three metrics, *ED*, which corresponds to the length (meters per hectare) of the edges between the *forest* and *non-forest* classes, is easy to interpret and intuitively corresponds perfectly to the notion of interaction between the two environments.

The candidate CM (*SHAPE_MN*, *FRAC_MN*, *CIRCLE_MN*, *SPLIT*, *DIVISION*, *ED*, *FRAC_AM*, *SHAPE_AM*, *PD*, and *CONTIG_MN*) and the associated *NLHI* were taken into account hereafter.

3.2. Qualitative Analysis: Empirical Behavior of Configurational Metrics and Associated *NLHI*

Figure 6 represents the spatialization of the 10 candidate CM in a sub-region around the village of Camopi. These results showed that many metric maps, particularly non-weighted averaged metrics, were “noisy”, with important spatial discontinuities that reflected the high sensitivity of the metrics based on a non-weighted averaging to the “appearance” of very small patches in the computation

window. This noise can be quite disconcerting to the users. In contrast, *ED* had a smooth appearance, making it less sensitive than the other metrics to small changes in the computation window.

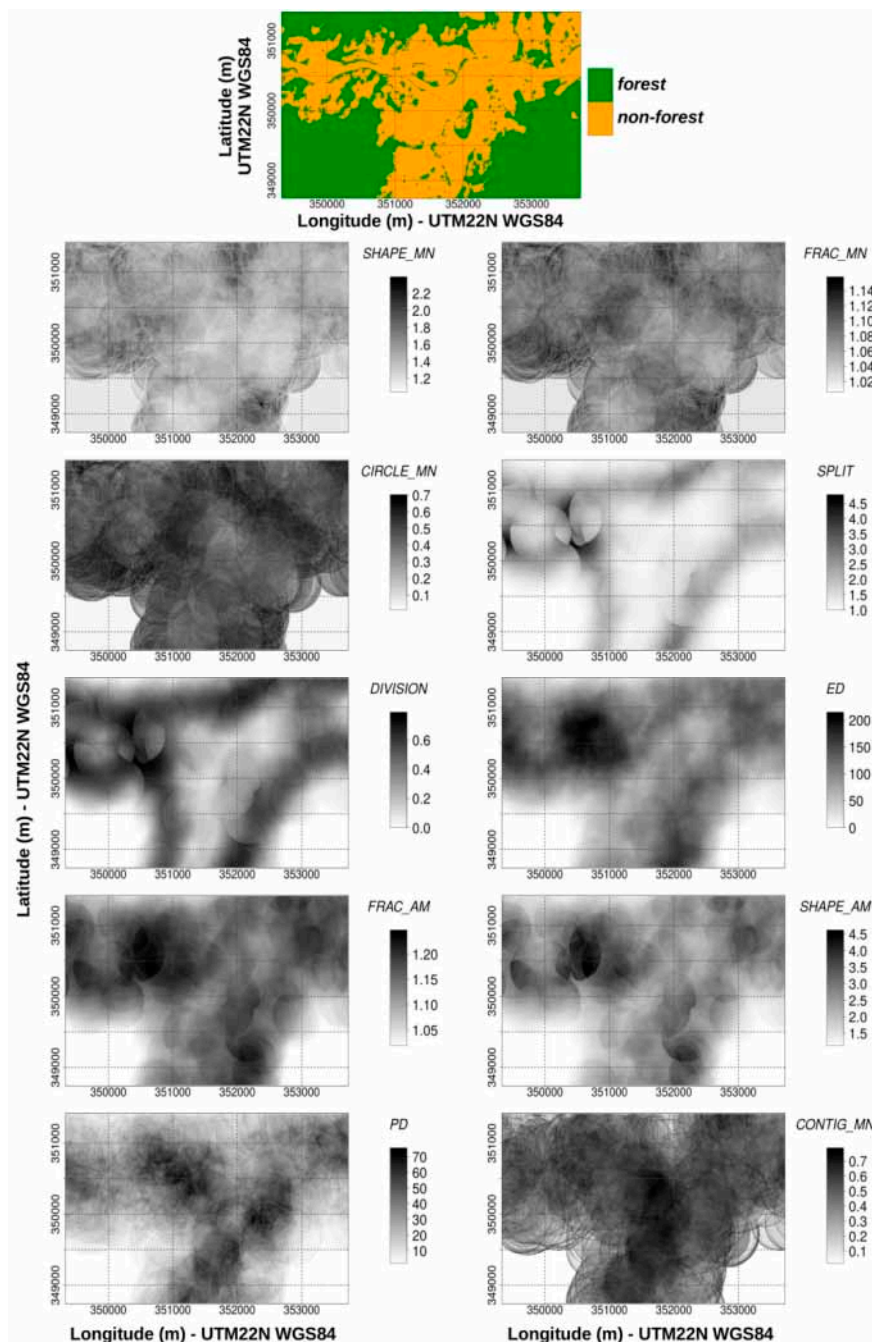


Figure 6. Spatialization of the configurational metrics. The top sub-figure represents the *forest vs. non-forest* map around the village of Camopi. The ten gray-scale images depict the configurational metric values for the same region for each sub-figure, with the metric name and legend on the right. Metrics were computed with the *forest vs. non-forest* maps, a moving discoidal window with a 400 m radius and an 8-connectivity implementation of the algorithm.

Figure 7 represents *NLHI* values as a function of both the *pF* and the CM used for their computations. The differences in empirical *NLHI* behavior were represented as a function of the CM used. For a given high value of *pF*, sharp changes in *NLHI* could be observed as a function of the CM (*SHAPE_MN*, *FRAG_MN*, *CIRCLE_MN*, and *CONTIG_MN*). This may reflect the high sensitivity

of these indices to small openings in the forest. Such specific behaviors are difficult to justify without complementary knowledge on the actual relationships between the hazard levels and the metric values.

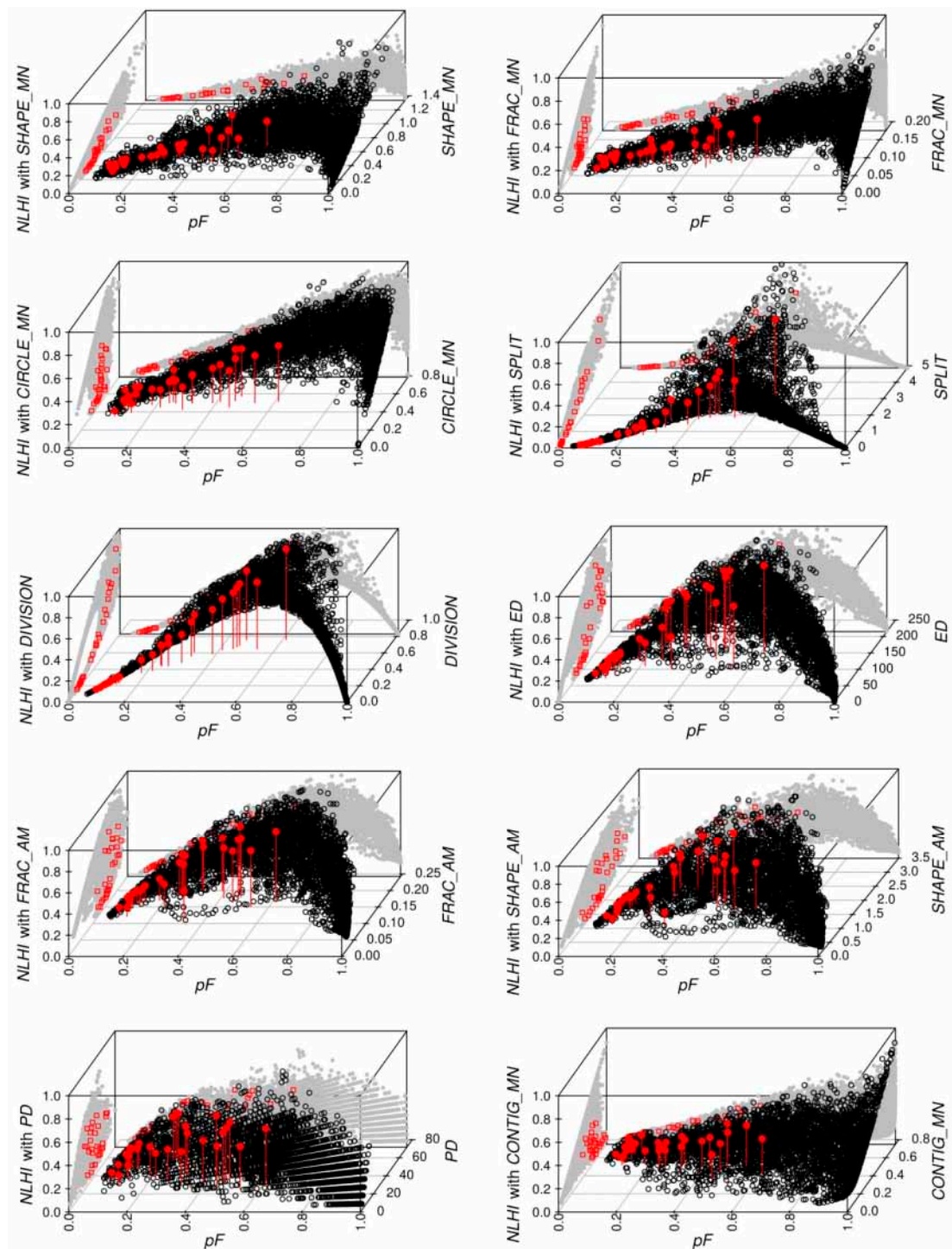


Figure 7. Three-dimensional plots of *NLHI* as a function of the $pF/100$ and configurational metrics. The x-axis (horizontal axis in bottom plane), y-axis (axis on the right in bottom plane), and z-axis (vertical axis on the left) represent the $pF/100$, the candidate CM and the corresponding *NLHI*, respectively. The gray dots represent the projections onto the xz-plane (back face of the box) and the yz-plane (left face). Red dots with vertical lines correspond to averaged values of the *NLHI* for the 28 hamlets of the Camopi village. Red squares correspond to the projections onto the xz-plane and the yz-plane of the averaged values for the 28 hamlets of the Camopi village.

3.3. Quantitative Evaluation: Relationship between NLHI and Actual Incidence Rates

Figure 8 presents the *P. falciparum* incidence rates for the 28 hamlets of Camopi, as a function of the NLHI values. While all the NLHI seemed to be correlated with the incidence rates (at least for non-null values), some (computed with *SHAPE_MN*, *FRAC_MN*, *CIRCLE_MN*, *PD*, *SHAPE_AM*, and *CONTIG_MN*) exhibited narrow ranges and, consequently, did not seem to significantly discriminate the different landscapes in terms of hazard level, notably for low hazard levels (for instance, NLHI computed with *SHAPE_MN*). By contrast, the NLHI with *DIVISION* and the NLHI with *ED* were more likely to achieve such discrimination.

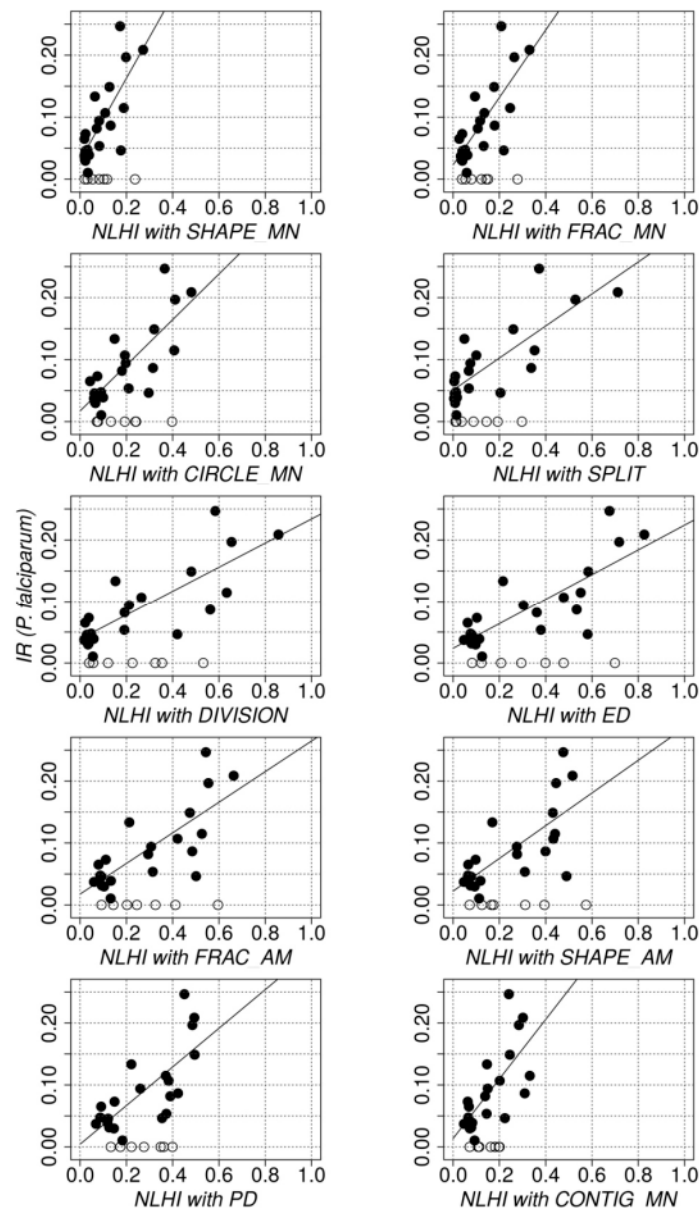


Figure 8. *P. falciparum* incidence rate values as a function of the NLHI. Black dots and circles correspond to non-null and null incidence rates, respectively. The line represents the regression line obtained using a linear regression model and non-null incidence rates only.

Results of the quantitative evaluation of the candidate CM and the associated indices are presented in Table 2. All candidate indices returned very significant (p -value lower than 0.001) Pearson and Spearman correlations and coefficient of determination when considering non-null incidence values

only. Results obtained with all incidence values were more differentiated. Only the indices built with *CIRCLE_MN*, *SPLIT*, *DIVISION*, and *ED* provided very significant (p -values < 0.001) Pearson coefficients and coefficients of determination. With all incidence values, no Spearman correlation coefficient was obtained. In many cases, the combination of pF and CM provides better correlation than using the pF or any CM separately.

Table 2. Quantitative evaluation of the relationship between *P. falciparum* incidence rates, landscape metrics, and candidate *NLHI*. In each cell, the three values correspond to the Pearson correlation coefficient, r ; the Spearman rank correlation coefficient, ρ ; and the coefficient of determination of a linear regression, R^2 . One and two asterisks correspond to a p -value lower than or equal to 0.01 and 0.001, respectively.

	Whole Dataset		Non Null Incidence Rates Only	
	Metric Alone	Candidate <i>NLHI</i>	Metric Alone	Candidate <i>NLHI</i>
	r ; ρ ; R^2	r ; ρ ; R^2	r ; ρ ; R^2	r ; ρ ; R^2
<i>pF</i>	0.61 **; 0.43; 0.37 **		0.78 **, 0.77 **, 0.60 **	
<i>SHAPE_MN</i>	0.33; 0.32; 0.11	0.54 *; 0.42; 0.30 *	0.61 *; 0.67 *; 0.37 *	0.77 **, 0.74 **, 0.59 **
<i>FRAC_MN</i>	0.11; 0.04; 0.01	0.55 *; 0.38; 0.30 *	0.20; 0.02; 0.04	0.76 **, 0.71 **, 0.57 **
<i>CIRCLE_MN</i>	0.15; 0.14; 0.02	0.60 **, 0.43; 0.35 **	0.18; 0.18; 0.03	0.79 **, 0.76 **, 0.62 **
<i>SPLIT</i>	0.65 **, 0.40; 0.42 **	0.68 **, 0.43; 0.47 **	0.83 **, 0.77 **, 0.69 **	0.81 **, 0.77 **, 0.65 **
<i>DIVISION</i>	0.54 *; 0.40; 0.29 *	0.64 **, 0.43; 0.40 **	0.79 **, 0.77 **, 0.62 **	0.80 **, 0.78 **, 0.64 **
<i>ED</i>	0.32; 0.24; 0.10	0.59 **, 0.43; 0.35 **	0.53; 0.56 *; 0.28	0.79 **, 0.75 **, 0.63 **
<i>FRAC_AM</i>	0.13; 0.11; 0.02	0.57 *; 0.42; 0.33 *	0.27; 0.39; 0.07	0.77 **, 0.74 **, 0.59 **
<i>SHAPE_AM</i>	0.04; 0.04; 0.00	0.50 *; 0.39; 0.25 *	0.13; 0.25; 0.02	0.71 **, 0.71 **, 0.51 **
<i>PD</i>	−0.31; −0.26; 0.09	0.57 *; 0.47; 0.33 *	−0.40; −0.37; 0.16	0.74 **, 0.76 **, 0.55 **
<i>CONTIG_MN</i>	−0.38; −0.34; 0.14	0.59 *; 0.44; 0.35 *	−0.65 *; −0.68 **, 0.43 *	0.71 **, 0.71 **, 0.50 **

Notes: * p -value \leq 0.01; ** p -value \leq 0.001.

3.4. Proposed *NLHI*

Combining the above qualitative and quantitative analysis, the *NLHI* computed using pF and *ED* was selected as the best landscape-based malaria hazard index. In fact, *ED* is an easy to interpret metric, the values of which do not depend on the connectivity computation option (Table 1). It appeared to efficiently discriminate the possible landscape contexts and realize a compromise of all of the metrics regarding the information content (Figure 5). It exhibited a smooth behavior in space (Figure 6) as well as a function of both pF and *ED* (Figure 7), making it an index less sensitive to small changes in the landscape and, therefore, more reliable for the generalization of the approach to the entire Amazonian region. Eventually, it provided very significant correlations with the evaluation data (Table 2).

Figure 9b shows the map of the proposed *NLHI* in the region around the village of Camopi resulting from the *forest vs. non-forest* map (Figure 9a). Figure 10b shows the map of the proposed *NLHI* in Oiapoque resulting from the *forest vs. non-forest* map (Figure 10a). In the village of Camopi, hazard-free areas consist of (i) dense *forest* areas, where there is no deforestation, and (ii) the areas (e.g., the interaction area of two rivers), where the anthropogenic pressure is high. High hazard areas (yellow to red) correspond to the areas, where the border between *forest* and *non-forest* is longer, and the percent of *forest* is higher. In Oiapoque, hazard-free areas correspond to the city center in Oiapoque, where anthropogenic pressure is high. High hazard areas (yellow to red) are around Oiapoque where the interaction degree between *forest* and *non-forest* is higher. Especially, the Oiapoque district named “Paraíso” exhibits high *NLHI* values.

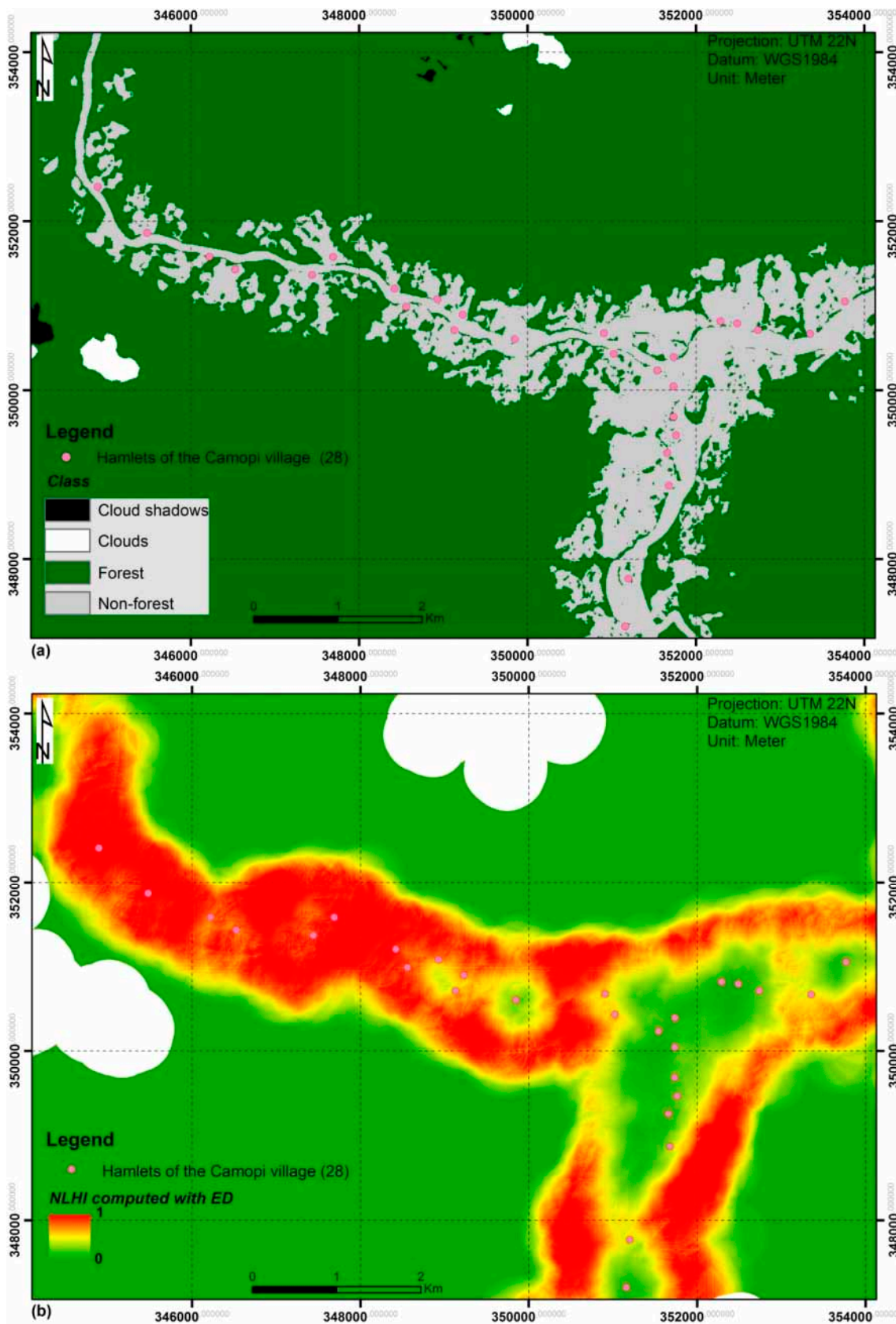


Figure 9. Maps resulting from the application of the proposed method in the region of Camopi. (a) Forest vs. non-forest map; and (b) map of the proposed NLHI (using pF and ED).

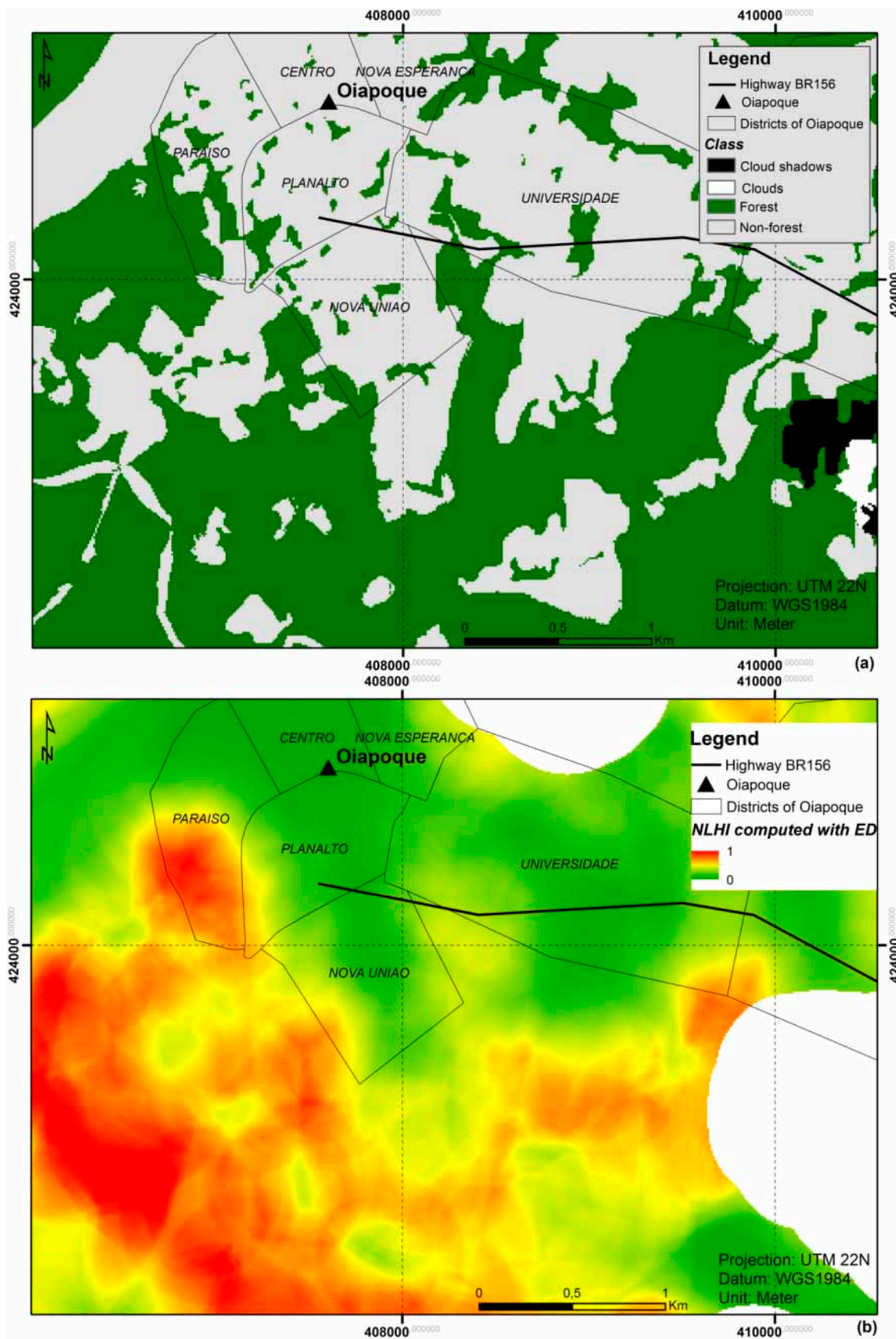


Figure 10. Maps resulting from the application of the proposed method in Oiapoque. (a) Forest vs. non-forest map; and (b) map of the proposed NLHI (using pF and ED). Polygons represent the districts of Oiapoque with their names.

The missing data in LULC maps (due to presence of clouds and cloud shadows) were set to NoData (see *Land Use and Land Cover Mapping* section) and were not used in the *NLHI* calculation. This caused the 400 m buffer zones around clouds and cloud shadows with missing *NLHI* values (white areas in Figures 9b and 10b).

4. Discussion

The proposed *NLHI*, obtained using *pF* and *ED*, is able to accurately represent the current and scientifically-founded knowledge on the relationship between LULC and malaria transmission in the Amazonian region. It provides a general and high sensitivity measure that accounts for various conditions, while maintaining a low sensitivity to low variations in the landscape metrics (Figure 7).

It is of interest that the combination of *pF* and CM provides better correlation in many cases than using the *pF* or any CM separately, supporting the use of such combination and confirming the impact of both the compositional and configurational aspects of the landscape.

The quantitative evaluations indicate that the proposed *NLHI* exhibits very significant (p -values < 0.01) relationships with malaria incidence rates, with a Pearson correlation coefficient (r) and a linear regression coefficient (R^2) equal to, respectively, 0.59 and 0.35 with the whole dataset, and to 0.79 and 0.63 with the non-null incidence rates. The Spearman rank correlation coefficient (ρ) appears only significant ($\rho = 0.75$) when taking into account the non-null incidence rates. The fact that some other indices computed with *SPLIT* and *DIVISION* metrics give higher coefficients does not invalidate the proposed one, because the malaria incidence rates (resulting from environmental and human factors that are not taken into account by the *NLHI*) cannot, by themselves, definitely and objectively determine which one is the best. The excellent correlations found between the possible indices and *P. falciparum* incidence rates can be explained by the fact that: (i) the *NLHI* implements a knowledge-based model that realizes a consensual synthesis of the conclusions of all the studies reviewed by Stefani *et al.* [14] and related to the impacts of land cover, land use, and landscape structure to malaria transmission; and (ii) the village of Camopi has quite homogeneous environmental and societal contexts where the landscape features play a key role in vector-human encounters and, thus, in malaria transmission. As previously discussed in the *Quantitative Evaluation* section, the hypothesis that the *P. falciparum* incidence rates in Camopi are largely explained by the landscape features, in this particular context, justifies the use of incidence rates as evaluation data.

Nevertheless, it is worth noting that the available evaluation data are not associated to all representative landscape contexts (see red points in Figure 7). Further investigations should be conducted to evaluate, quantitatively, the indices for the very high forest proportions.

We could not evaluate the proposed *NLHI* in the surrounding region of Saint-Georges-de-l'Oyapock and Oiapoque, as we did not benefit from sufficient data, both in quantity and quality. However, the results depicted in Figure 10b seem to correspond to the knowledge on environments at risk in this area. Especially, Paraíso district of Oiapoque, that exhibits high *NLHI* index values (Figure 10b), is associated to a very high risk of malaria transmission, according to an entomological study [43].

Although knowledge-based risk mapping has proven to be useful in a data-sparse context, there are two important limitations that should be underscored: (i) such mapping requires the gathering and analysis of an extensive knowledge on disease vectors, reservoirs, humans, and/or their interactions. This process needs a profound reflection and a long period of time [50]; and (ii) author bias may be associated with the identification, choice, and interpretation of the disease risk factors [29,30]. In the present study, a systematic literature review of the studies dealing with the relations between LULC and malaria transmission in the Amazon was done prior to establishing the model which, in conjunction with the consensual nature of the knowledge-based model, tends to reduce investigator bias and make the *NLHI* pertinent. The use of different possible landscape metrics also permits limiting the subjectivity of the approach. Furthermore, the availability of alternative significant metrics to

compute the *NLHI* provides a means by which to improve the index in the future, according to new scientific evidence on the relationships between hazard levels and landscape features.

The implementation of the knowledge-based model considers only *forest* and *non-forest* classes, whereas the model deals with the notion of deforestation. In this study, natural openings of the dense forest, like large rivers or rock outcrops, were considered in the same way as the anthropogenic openings. Particularly, the *NLHI* appears to be highly influenced by the hydrographic network. In fact, such impact is not due to the capacity of rivers for creating the mosquito breeding sites, but only to the capacity for producing the landscapes that favor the interactions between forested and non-forested areas. Rivers create such landscapes in two main ways, by creating openings in the dense forest (for large rivers), or maintaining gallery forests in anthropogenic areas.

Considering natural and anthropogenic forest openings in the same way is a fully assumed choice in order to define an index that reflects solely the landscape contribution to malaria transmission risk. In a second step, such an index should be combined with geographic layers characterizing the vector habitats and the human footprint [51] in order to consider which areas are actually associated with the presence of vectors and humans, and to what extent. More generally, it is worth noting that such a hazard index is only a component of a global and integrated risk index that should take into account spatialized information layers related to the presence and density of vectors and human populations, the presence of the parasite and the parasite load in the human populations, the human immunity level and genetic susceptibility, and climatic and behavioral factors. However, the restricted domain of interpretation of the *NLHI* does not minimize its value. In fact, to our knowledge, this work is the first attempt to spatialize the landscape contribution to malaria transmission, through a general and robust index. The separate assessment of landscape contribution can greatly improve integrated risk models as it has been previously stated in the *Introduction* section.

This study confirms that remote sensing is an efficient tool for identifying environmental features related to malaria transmission. However, the presence of clouds and cloud shadows results in missing data in optical satellite images, particularly in tropical areas. Moreover, many environment variables, like wetlands under vegetation cover, can correspond to the breeding sites for malaria vectors, and are not observable by optical remote sensing. Synthetic aperture radar (SAR) has the capability for penetrating such barriers and, consequently, might be used or combined with optical remote sensing for extracting environmental characteristics related to vector habitats [52]. Eventually, further works should consider the temporal aspects of the deforestation by producing diachronic land cover maps, and then the temporal evolution of the *NLHI* associated with malaria in the Amazonian region.

5. Conclusions

A knowledge-based risk mapping approach was developed to build a Normalized Landscape-based Hazard Index (*NLHI*) of malaria transmission from satellite images. The approach was validated with actual malaria incidence rates from the cross-border region between French Guiana and Brazil. The data show that landscape characterization based on remotely-sensed LULC maps permits the estimation of the landscape contribution to malaria risk transmission. Being based on consensual knowledge about the relations between LULC and malaria transmission in the Amazonian region and exploiting a simple characterization of the land cover (namely *forest vs. non-forest*), the present approach can be used on a regular basis to perform malaria transmission risk evaluations, and be easily generalized to the entire Amazonian region.

Acknowledgments: This study was supported by the China Scholarship Council, the OSE-Guyamapá project (FEDER-Guyane, PO-Amazonie call) the TéléPal project (CNES-TOSCA 2014 call) and the GAPAM-Sentinel project (Guyamazon call). SPOT images were provided by the SEAS-Guyane project. The authors would like to thank the members of the Environment, Societies and Health Risks inter-disciplinary work-group (ESoR group) of the ESPACE-DEV Unit for the constructive discussions that enriched the paper. The authors wish to thank BioMed Central Ltd. for the permission of reproduction of a figure. The Figure 2 was reproduced based on the original version (the Figure 3 in Stefani *et al.* [14]) which has been published by BioMed Central Ltd. BioMed Central Ltd. declares that the reproduction of figure is permitted free of charge and without formal written permission from BioMed Central Ltd. (as the original publisher) or the copyright holder.

Author Contributions: Z.L. participated in the research design, data collection, analysis and interpretation, and prepared the manuscript. E.R. participated in the research design, data collection, analysis and interpretation, and reviewed the manuscript. N.D. participated in the research design, data collection, analysis and interpretation, and reviewed the manuscript. A.S. was responsible for the children's cohort in Camopi and computed the incidence rates used for the validation method. A.M. produced the land use and land cover maps. R.G. and F.S. reviewed the manuscript. All authors read and approved the final manuscript.

Conflicts of Interest: The authors declare no conflict of interest.

Abbreviations

The following abbreviations are used in this manuscript:

AM	Area-weighted mean
API	Annual Parasite Index
ASF	African swine fever
CIRCLE	Related Circumscribing Circle
CM	Configurational metrics
CONTIG	Contiguity Index
DIVISION	Landscape Division Index
ED	Edge Density
FRAC	Fractal Dimension Index
GPS	Global Positioning System
IBGE	Brazilian Institute of Geography and Statistics
IGN	National Institute of Geographic and Forestry Information
INSEE	National Institute of Statistics and Economic Studies
LULC	Land use and land cover
LHI	Landscape-based Hazard Index
MN	Mean
NLHI	Normalization Landscape-based Hazard Index
PARA	Perimeter-area ratio
PCA	Principal Component Analysis
PD	Patch density
pF	Proportion of the forest
SAR	Synthetic aperture radar
SHAPE	Shape Index
SPLIT	Splitting Index
SVM	Support Vector Machine

References

1. WHO. *World Malaria Report 2015*; 9789241565158; WHO: Geneva, Switzerland, 2015.
2. Peiter, P.C. Living conditions, health status and health services availability along the brazilian border: A geographical approach. *Cad Saúde Pública* **2007**, *23*, 237–250. [[CrossRef](#)]
3. Wangdi, K.; Gatton, M.L.; Kelly, G.C.; Clements, A.C. Cross-border malaria: A major obstacle for malaria elimination. *Adv. Parasitol.* **2015**, *89*, 79–107. [[CrossRef](#)] [[PubMed](#)]
4. Musset, L.; Pelleau, S.; Girod, R.; Ardillon, V.; Carvalho, L.; Dusfour, I.; Gomes, M.S.M.; Djossou, F.; Legrand, E. Malaria on the guiana shield: A review of the situation in French Guiana. *Mem. Inst. Oswaldo Cruz* **2014**, *109*, 525–533. [[CrossRef](#)] [[PubMed](#)]

5. Sinka, M.E.; Rubio-Palis, Y.; Manguin, S.; Patil, A.P.; Temperley, W.H.; Gething, P.W.; Van Boeckel, T.; Kabaria, C.W.; Harbach, R.E.; Hay, S.I. The dominant anopheles vectors of human malaria in the Americas: Occurrence data, distribution maps and bionomic precis. *Parasites Vectors* **2010**, *3*. [[CrossRef](#)] [[PubMed](#)]
6. Galardo, A.K.; Arruda, M.; D'Almeida Couto, A.A.; Wirtz, R.; Lounibos, L.P.; Zimmerman, R.H. Malaria vector incrimination in three rural riverine villages in the Brazilian Amazon. *Am. J. Trop. Med. Hyg.* **2007**, *76*, 461–469. [[PubMed](#)]
7. Girod, R.; Roux, E.; Berger, F.; Stefani, A.; Gaborit, P.; Carinci, R.; Issaly, J.; Carme, B.; Dusfour, I. Unravelling the relationships between anopheles darlingi (diptera: Culicidae) densities, environmental factors and malaria incidence: Understanding the variable patterns of malarial transmission in French Guiana (South America). *Ann. Trop. Med. Parasitol.* **2011**, *105*, 107–122. [[CrossRef](#)] [[PubMed](#)]
8. Dusfour, I.; Issaly, J.; Carinci, R.; Gaborit, P.; Girod, R. Incrimination of anopheles (anopheles) intermedius peryassu, *an.* (Nyssorhynchus) nuneztovari gabaldon, *an.* (NYS.) oswaldoi peryassu as natural vectors of plasmodium falciparum in French Guiana. *Mem. Inst. Oswaldo Cruz* **2012**, *107*, 429–432. [[CrossRef](#)] [[PubMed](#)]
9. Hiwat, H.; Bretas, G. Ecology of anopheles darlingi root with respect to vector importance: A review. *Parasites Vectors* **2011**, *4*, 177. [[CrossRef](#)] [[PubMed](#)]
10. Stefani, A.; Hanf, M.; Nacher, M.; Girod, R.; Carme, B. Environmental, entomological, socioeconomic and behavioural risk factors for malaria attacks in Amerindian children of Camopi, French Guiana. *Malar. J.* **2011**, *10*, 246. [[CrossRef](#)] [[PubMed](#)]
11. Patz, J.A.; Olson, S.H. Malaria risk and temperature: Influences from global climate change and local land use practices. *Proc. Natl. Acad. Sci. USA* **2006**, *103*, 5635–5636. [[CrossRef](#)] [[PubMed](#)]
12. Olson, S.H.; Gangnon, R.; Elguero, E.; Durieux, L.; Guegan, J.F.; Foley, J.A.; Patz, J.A. Links between climate, malaria, and wetlands in the Amazon Basin. *Emerg. Infect. Dis.* **2009**, *15*, 659–662. [[CrossRef](#)] [[PubMed](#)]
13. Kraemer, M.U.; Hay, S.I.; Pigott, D.M.; Smith, D.L.; Wint, G.R.; Golding, N. Progress and challenges in infectious disease cartography. *Trends Parasitol.* **2016**, *32*, 19–29. [[CrossRef](#)] [[PubMed](#)]
14. Stefani, A.; Dusfour, I.; Correa, A.P.; Cruz, M.C.; Dessay, N.; Galardo, A.K.; Galardo, C.D.; Girod, R.; Gomes, M.S.; Gurgel, H.; *et al.* Land cover, land use and malaria in the Amazon: A systematic literature review of studies using remotely sensed data. *Mala. J.* **2013**, *12*, 192. [[CrossRef](#)] [[PubMed](#)]
15. Barbieri, A.F.; Sawyer, I.O.; Soares-Filho, B.S. Population and land use effects on malaria prevalence in the southern Brazilian Amazon. *Hum. Ecol.* **2005**, *33*, 847–874. [[CrossRef](#)]
16. Guerra, C.A.; Snow, R.W.; Hay, S.I. A global assessment of closed forests, deforestation and malaria risk. *Ann. Trop. Med. Parasitol.* **2006**, *100*, 189–204. [[CrossRef](#)] [[PubMed](#)]
17. Vittor, A.Y.; Gilman, R.H.; Tielsch, J.; Glass, G.; Shields, T.; Lozano, W.S.; Pinedo-Cancino, V.; Patz, J.A. The effect of deforestation on the human-biting rate of anopheles darlingi, the primary vector of falciparum malaria in the Peruvian Amazon. *Am. J. Trop. Med. Hyg.* **2006**, *74*, 3–11. [[PubMed](#)]
18. Vittor, A.Y.; Pan, W.; Gilman, R.H.; Tielsch, J.; Glass, G.; Shields, T.; Sanchez-Lozano, W.; Pinedo, V.V.; Salas-Cobos, E.; Flores, S.; *et al.* Linking deforestation to malaria in the Amazon: Characterization of the breeding habitat of the principal malaria vector, anopheles darlingi. *Am. J. Trop. Med. Hyg.* **2009**, *81*, 5–12. [[PubMed](#)]
19. Olson, S.H.; Gangnon, R.; Silveira, G.A.; Patz, J.A. Deforestation and malaria in Mancio Lima county, Brazil. *Emerg. Infect. Dis.* **2010**, *16*, 1108–1115. [[CrossRef](#)] [[PubMed](#)]
20. Fraser, B. Taking on malaria in the Amazon. *Lancet* **2010**, *376*, 1133–1134. [[CrossRef](#)]
21. Omumbo, J.A.; Hay, S.I.; Snow, R.W.; Tatem, A.J.; Rogers, D.J. Modelling malaria risk in east africa at high-spatial resolution. *Trop. Med. Int. Health* **2005**, *10*, 557–566. [[CrossRef](#)] [[PubMed](#)]
22. Zeilhofer, P.; dos Santos, E.S.; Ribeiro, A.L.; Miyazaki, R.D.; dos Santos, M.A. Habitat suitability mapping of anopheles darlingi in the surroundings of the Manso hydropower plant reservoir, Mato Grosso, Central Brazil. *Int. J. Health Geogr.* **2007**, *6*, 7. [[CrossRef](#)] [[PubMed](#)]
23. Maheu-Giroux, M.; Casapia, M.; Soto-Calle, V.E.; Ford, L.B.; Buckeridge, D.L.; Coomes, O.T.; Gyorkos, T.W. Risk of malaria transmission from fish ponds in the peruvian amazon. *Acta Trop.* **2010**, *115*, 112–118. [[CrossRef](#)] [[PubMed](#)]
24. Patil, A.P.; Gething, P.W.; Piel, F.B.; Hay, S.I. Bayesian geostatistics in health cartography: The perspective of malaria. *Trends Parasitol.* **2011**, *27*, 246–253. [[CrossRef](#)] [[PubMed](#)]
25. Stuckey, E.M.; Smith, T.A.; Chitnis, N. Estimating malaria transmission through mathematical models. *Trends Parasitol.* **2013**, *29*, 477–482. [[CrossRef](#)] [[PubMed](#)]

26. Hardy, A.; Mageni, Z.; Dongus, S.; Killeen, G.; Macklin, M.G.; Majambare, S.; Ali, A.; Msellem, M.; Al-Mafazy, A.W.; Smith, M.; *et al.* Mapping hotspots of malaria transmission from pre-existing hydrology, geology and geomorphology data in the pre-elimination context of Zanzibar, United Republic of Tanzania. *Parasites Vectors* **2015**, *8*, 41. [[CrossRef](#)] [[PubMed](#)]
27. Clements, A.C.; Pfeiffer, D.U.; Martin, V. Application of knowledge-driven spatial modelling approaches and uncertainty management to a study of rift valley fever in Africa. *Int. J. Health Geogr.* **2006**, *5*, 57. [[CrossRef](#)] [[PubMed](#)]
28. De Glanville, W.A.; Vial, L.; Costard, S.; Wieland, B.; Pfeiffer, D.U. Spatial multi-criteria decision analysis to predict suitability for African swine fever endemicity in Africa. *BMC Vet. Res.* **2014**, *10*, 9. [[CrossRef](#)] [[PubMed](#)]
29. Stevens, K.B.; Pfeiffer, D.U. Spatial modelling of disease using data- and knowledge-driven approaches. *Spat Spatiotemporal Epidemiol.* **2011**, *2*, 125–133. [[CrossRef](#)] [[PubMed](#)]
30. Garni, R.; Tran, A.; Guis, H.; Baldet, T.; Benallal, K.; Boubidi, S.; Harrat, Z. Remote sensing, land cover changes, and vector-borne diseases: Use of high spatial resolution satellite imagery to map the risk of occurrence of cutaneous leishmaniasis in Ghardaia, Algeria. *Infect. Genet. Evol.* **2014**, *28*, 725–734. [[CrossRef](#)] [[PubMed](#)]
31. Alimi, T.O.; Fuller, D.O.; Quinones, M.L.; Xue, R.D.; Herrera, S.V.; Arevalo-Herrera, M.; Ulrich, J.N.; Qualls, W.A.; Beier, J.C. Prospects and recommendations for risk mapping to improve strategies for effective malaria vector control interventions in Latin America. *Malaria J.* **2015**, *14*, 519. [[CrossRef](#)] [[PubMed](#)]
32. Uuemaa, E.; Mander, Ü.; Marja, R. Trends in the use of landscape spatial metrics as landscape indicators: A review. *Ecol. Indic.* **2013**, *28*, 100–106. [[CrossRef](#)]
33. Ostfeld, R.S.; Glass, G.E.; Keesing, F. Spatial epidemiology: An emerging (or re-emerging) discipline. *Trends Ecol. Evol.* **2005**, *20*, 328–336. [[CrossRef](#)] [[PubMed](#)]
34. Overgaard, H.J.; Ekbom, B.; Suwonkerd, W.; Takagi, M. Effect of landscape structure on anopheline mosquito density and diversity in Northern Thailand: Implications for malaria transmission and control. *Landsc. Ecol.* **2003**, *18*, 605–619. [[CrossRef](#)]
35. INSEE. Insee. Saint-Georges (97038). Available online: <http://www.insee.fr/fr/themes/comparateur.asp?codegeo=com-97308> (accessed on 11 February 2015).
36. INSEE. Insee. Camopi (97356). Available online: <http://www.insee.fr/fr/themes/comparateur.asp?codegeo=com-97356> (accessed on 11 February 2015).
37. IBGE. Oiapoque. Available online: <http://cod.ibge.gov.br/12XVS> (accessed on 12 February 2015).
38. Boyrie, A.; Laques, A.E.; Gurgel, H.C. Avaliação de políticas públicas para o desenvolvimento a partir de um estudo sobre a fragmentação da floresta na bacia do oiapoque (guiana francesa/amapá). In Proceedings of the 16th Brazilian Symposium of Remote Sensing, Foz do Iguaçu, Brazil, 13–18 April 2013.
39. Carme, B.; Ardillon, V.; Girod, R.; Grenier, C.; Joubert, M.; Djossou, F.; Ravachol, F. Update on the epidemiology of malaria in French Guiana. *Med. Trop.* **2009**, *69*, 19–25.
40. Ardillon, V.; Eltges, F.; Chocho, A.; Chantilly, S.; Carvalho, L.; Flamand, C.; Carme, B. *Evolution de la Situation Epidémiologique du Paludisme en Guyane de 2005 à 2011*; French Institute for Public Health Surveillance: Saint-Maurice, French, 2012.
41. Ardillon, V.; Carvalho, L.; Prince, C.; Djossou, F. *Bilan 2012 de la Situation Epidémiologique du Paludisme en Guyane*; French Institute for Public Health Surveillance: Saint-Maurice, French, 2013.
42. Cenci, D.; Ferreira, A.C.; Santelli, S. *Situation Epidémiologique du Paludisme dans L'état D'amapà et dans la Minicipalité D'oiapoque (Brésil)*; French Institute for Public Health Surveillance: Saint-Maurice, French, 2012.
43. Zanini, V.M.; Gomes, M.S.M.; Galardo, A.K.R.; Lima, A.C.S.F.; Correa, A.P.S.A.; Stefani, A.; Roux, E.; Souza, R.T.L.; Póvoa, M.M.; Souto, R.N.P. Potencial de transmissão de malária no município de oiapoque-Amapá-Brasil. In Proceedings of the 50th Congress of the Brazilian Society of Tropical Medicine, Rio Branco, Brazil, 21–24 September 2014.
44. Tadei, W.P.; Thatcher, B.D.; Santos, J.M.; Scarpassa, V.M.; Rodrigues, I.B.; Rafael, M.S. Ecologic observations on anopheline vectors of malaria in the brazilian amazon. *Am. J. Trop. Med. Hyg.* **1998**, *59*, 325–335. [[PubMed](#)]
45. McGarigal, K.; Cushman, S.; Ene, E. Fragstats v4: Spatial Pattern Analysis Program for Categorical and Continuous Maps. Available online: <http://www.umass.edu/landeco/research/fragstats/fragstats.html> (accessed on 4 April 2016).

46. Stefani, A.; Roux, E.; Fotsing, J.M.; Carme, B. Studying relationships between environment and malaria incidence in Camopi (French Guiana) through the objective selection of buffer-based landscape characterisations. *Int. J. Health Geogr.* **2011**, *10*, 65. [[CrossRef](#)] [[PubMed](#)]
47. Carvalho, F.M.V.; De Marco, P.; Ferreira, L.G. The cerrado into-pieces: Habitat fragmentation as a function of landscape use in the savannas of central Brazil. *Biol. Conserv.* **2009**, *142*, 1392–1403. [[CrossRef](#)]
48. Hargis, C.D.; Bissonette, J.A.; David, J.L. The behavior of landscape metrics commonly used in the study of habitat fragmentation. *Landsc. Ecol.* **1998**, *13*, 167–186. [[CrossRef](#)]
49. Hustache, S.; Nacher, M.; Djossou, F.; Carme, B. Malaria risk factors in Amerindian children in French Guiana. *Am. J. Trop. Med. Hyg.* **2007**, *76*, 619–625. [[PubMed](#)]
50. Hongoh, V.; Hoen, A.G.; Aenishaenslin, C.; Waaub, J.P.; Belanger, D.; Michel, P.; Lyme, M.C. Spatially explicit multi-criteria decision analysis for managing vector-borne diseases. *Int. J. Health Geogr.* **2011**, *10*, 70. [[CrossRef](#)] [[PubMed](#)]
51. De Thoisy, B.; Richard-Hansen, C.; Goguillon, B.; Joubert, P.; Obstancias, J.; Winterton, P.; Brosse, S. Rapid evaluation of threats to biodiversity: Human footprint score and large vertebrate species responses in French Guiana. *Biodivers. Conserv.* **2010**, *19*, 1567–1584. [[CrossRef](#)]
52. Machault, V.; Vignolles, C.; Borch, F.; Vounatsou, P.; Pages, F.; Briolant, S.; Lacaux, J.P.; Rogier, C. The use of remotely sensed environmental data in the study of malaria. *Geospat. Health* **2011**, *5*, 151–168. [[CrossRef](#)] [[PubMed](#)]



© 2016 by the authors; licensee MDPI, Basel, Switzerland. This article is an open access article distributed under the terms and conditions of the Creative Commons Attribution (CC-BY) license (<http://creativecommons.org/licenses/by/4.0/>).