



HAL
open science

Temporal Dynamics of Active Prokaryotic Nitrifiers and Archaeal Communities from River to Sea

Mylène Hugoni, Hélène Agogué, Najwa Taib, Isabelle Domaizon, Anne Moné,
Pierre E. Galand, Gisèle Bronner, Didier Debroas, Isabelle Mary

► **To cite this version:**

Mylène Hugoni, Hélène Agogué, Najwa Taib, Isabelle Domaizon, Anne Moné, et al.. Temporal Dynamics of Active Prokaryotic Nitrifiers and Archaeal Communities from River to Sea. *Aquatic Microbial Ecology*, 2015, 70 (2), pp.473-483. 10.1007/s00248-015-0601-z . hal-01354835

HAL Id: hal-01354835

<https://hal.science/hal-01354835v1>

Submitted on 22 Aug 2016

HAL is a multi-disciplinary open access archive for the deposit and dissemination of scientific research documents, whether they are published or not. The documents may come from teaching and research institutions in France or abroad, or from public or private research centers.

L'archive ouverte pluridisciplinaire **HAL**, est destinée au dépôt et à la diffusion de documents scientifiques de niveau recherche, publiés ou non, émanant des établissements d'enseignement et de recherche français ou étrangers, des laboratoires publics ou privés.

Temporal dynamics of active prokaryotic nitrifiers and archaeal communities from river to sea

Mylène Hugoni^{1,2}, H  l  ne Agogu  ³, Najwa Taib^{1,2}, Isabelle Domaizon⁴, Anne Mon  ^{1,2}, Pierre

5 E. Galand⁵, Gis  le Bronner^{1,2}, Didier Debroas^{1,2}, Isabelle Mary^{1,2}

(1) Clermont Universit  , Universit   Blaise Pascal, Laboratoire "Microorganismes : G  nome et Environnement", BP 10448, F-63000 CLERMONT-FERRAND, France;

(2) CNRS, UMR 6023, LMGE, F-63171 AUBIERE, France;

10 (3) Littoral, Environnement et Soci  t  s (LIENS), UMR 7266, CNRS, University of La Rochelle, F-17000 La Rochelle, France;

(4) Institut National de la Recherche Agronomique, UMR 42 Centre Alpin de Recherche sur les R  seaux Trophiques et Ecosyst  mes Limniques, F-74200 Thonon les Bains, France;

(5) Sorbonne Universit  s, UPMC Univ Paris 06, CNRS, Laboratoire d'Ecog  ochimie des
15 Environnements Benthiques (LECOB), Observatoire Oc  anologique, 66650, Banyuls sur Mer, France.

Correspondance: Isabelle Mary, LMGE, Laboratoire Microorganismes: G  nome et Environnement, UMR CNRS 6023, University Blaise Pascal (Clermont-Ferrand II), 24
20 avenue des Landais, BP 80026, Aubi  re 63171, France. Tel.: + 33 4 73 40 74 70; fax: + 33 4 73 40 76 70; e-mail: isabelle.mary@univ-bpclermont.fr

25 **Abstract**

To test if different niches for potential nitrifiers exist in estuarine systems, we assessed by pyrosequencing the diversity of archaeal gene transcript markers for taxonomy (16S rRNA) during an entire year along a salinity gradient in surface waters of the Charente estuary (Atlantic coast, France). We further investigated the potential for estuarine prokaryotes to oxidize ammonia and hydrolyze urea by quantifying thaumarchaeal *amoA* and *ureC*, and bacterial *amoA* transcripts. Our results showed a succession of different nitrifiers from river to sea with bacterial *amoA* transcripts dominating in the freshwater station while archaeal transcripts were predominant in the marine station. The 16S rRNA sequence analysis revealed that *Thaumarchaeota* Marine Group I (MGI) were the most abundant overall but other archaeal groups like *Methanosaeta* were also potentially active in winter (December-March) and *Euryarchaeota* Marine Group II (MGII) were dominant in seawater in summer (April-August). Each station also contained different *Thaumarchaeota* MGI phylogenetic clusters, and the clusters' microdiversity was associated to specific environmental conditions suggesting the presence of ecotypes adapted to distinct ecological niches. The *amoA* and *ureC* transcript dynamics further indicated that some of the *Thaumarchaeota* MGI subclusters were involved in ammonia oxidation through the hydrolysis of urea. Our findings show that ammonia oxidizing *Archaea* and *Bacteria* were adapted to contrasted conditions and that the *Thaumarchaeota* MGI diversity probably corresponds to distinct metabolisms or life strategies.

45

Keywords: Ammonia oxidation / *amoA* / *Archaea* / gradient / diversity

50 **Introduction**

During the last decades, studies on microbial ecology have provided compelling evidence of the ubiquity and abundance of *Archaea* in a wide variety of aquatic habitats [1,2]. Further, the discovery of genes encoding enzymes related to nitrification in archaeal metagenomes from soil and marine waters [3-5] and the isolation of the first autotrophic archaeal nitrifier, 55 *Nitrosopumilus maritimus* [6] have led to a dramatic shift in the classical view that *Bacteria* were the main responsible for nitrification.

The wide distribution of ammonia oxidizing *Archaea* (AOA), affiliated with *Thaumarchaeota*, across a variety of aquatic environments is now well established through reports on the abundance of the gene encoding archaeal ammonia monooxygenase α -subunit 60 (*amoA*) in oceanic waters [7,8] and freshwater ecosystems [9,10]. Nevertheless, the relative contribution of AOA *versus* ammonia oxidizing *Bacteria* (AOB) remains unclear and factors that regulate ammonia oxidizing microorganisms' activity and diversity in aquatic ecosystems have not yet been fully elucidated. While in marine ecosystems AOA often outnumber AOB [8,11], the ecology of nitrifiers appears more complex along salinity gradients. Indeed, some 65 studies reported that AOB dominate under saline estuarine conditions [12-14], while others showed that AOA always dominate in estuarine systems [15]. In lakes, contrasting results have been reported as AOB were absent from an oligotrophic high-altitude lake [16] but were predominant in nutrient-rich compared to oligotrophic waters [9]. Additionally the discovery that some *Thaumarchaeota* may degrade urea to use nitrogen for their metabolism [17,18], 70 and the absence of the *ureC* gene (encoding the alpha subunit of a putative archaeal urease) in the representative marine isolate, *Nitrosopumilus maritimus* [19], raises new questions about the existence of different archaeal nitrifier ecotypes able to cope with different environmental conditions or potential competitors [17,18,20]. However, little is known about their possible niche differentiation associated with their various metabolisms [17,21] and their ability to

75 assimilate inorganic carbon [22]. In particular, their potential activity in relation to seasonal changes, salinity and chemical gradients, remains poorly understood.

Microbial communities in estuaries and some coastal margins vary greatly in space and time because of sharp gradients in salinity and nutrients [23,24]. The mixing of fresh- and saltwater creates steep physico-chemical gradients that are coupled to shifts in the resident
80 microbial communities, and particularly ammonia oxidizers [15]. Community transitions from marine to freshwater are explained by salinity, which is the main factor driving community structure globally [25,26]. Temperature, nitrite and ammonia concentrations, and net primary productivity have, however, also been shown to produce major effects on the nitrifiers community structure. Transitions between bacterial and archaeal ammonia oxidizers
85 communities have been frequently detected [13,27,28].

Estuarine *Archaea* usually originate from both marine and freshwater environments but also from soils and sediments [15,29]. In riverine ecosystems, *Euryarchaeota* and *Thaumarchaeota* are both present but their proportion can vary according to the studied location. Indeed, *Thaumarchaeota* dominated in the Rhine river, while *Euryarchaeota* were
90 the most abundant in the arctic Mackenzie river [30,31]. Even though the diversity of riverine *Archaea* starts to be described, their ecology and seasonal dynamics remain poorly understood because of the lack of temporal surveys. In addition, the potential activity (at the 16S rRNA level) of riverine archaeal communities is not known as aquatic microorganisms have traditionally been studied at the DNA level [32,33]. However, the recent use of both 16S
95 rRNA genes and 16S rRNA has shown the importance of differentiating the potentially active communities from the total communities for a better understanding of the ecology of aquatic microorganisms [34,35].

Here we studied an estuary to test at a domain level whether *Bacteria* and *Archaea* had different niches for nitrification. We then looked more specifically at *Archaea* to test if

100 different thaumarchaeal ecotypes had different habitats and metabolisms. We quantified
thaumarchaeal *amoA* and *ureC* transcripts in comparison to bacterial *amoA* over one year
along a salinity gradient in the surface water of the Charente Estuary (west coast of France),
and we described the community structure of potentially active *Archaea* by pyrosequencing
cDNA from the V3-V5 region of 16S rRNA gene.

105

Materials and Methods

Study sites, sampling and chemical analyses

The Charente is a 350 km coastal river draining a 10,000 km² basin and emerging in the bay
of Marennes Oleron. The sampling area (Figure 1) started at St-Savinien, upstream of the
110 Charente (freshwater station, 45°52'37"N, 00°41'10"W) and ended in the Charente estuary
(marine station, 45°59'54", 01°09'56"W), with one intermediary station (mesohaline station,
45°58'11"N, 01°00'50"W). Each station was characterized by a specific salinity class ranging
from 0 to 35 PSU (Supplementary Table 1). Surface water (0.5 m depth) was collected
monthly in each station from April 2011 to March 2012, except May 2011 in the marine
115 station, by using a 10-L Niskin Bottle. Water temperature, salinity and pH were determined
with a multiparameter probe (YSI GRANT 3800). Phosphate (PO₄³⁻) and ammonia (NH₄⁺)
contents were analyzed using Merck colorimetric kits (Millipore) according to standard
American Public Health Association (1992) methods. Chlorophyll *a* (Chl*a*) concentration was
determined by spectrophotometry [36,37].

120

RNA extraction and pyrosequencing

A sub-sample (300 mL) added with an equal volume of RNA Later (ammonia sulfate 7.93 M,
sodium citrate 0.025 M, EDTA 0.02 M, pH 5.2) was pre-filtered through 5-µm pore-size
polycarbonate filters (Millipore) and collected on 0.2-µm pore-size (pressure <10 kPa)

125 polycarbonate filters (Millipore) and stored at -80°C until nucleic acid extraction. The RNA
extraction method was modified from Hugoni *et al.* [35] using a combination of mechanic and
enzymatic cell lysis, followed by extraction using the AllPrep DNA/RNA kit (Qiagen,
Valencia, CA). The RNA samples were tested for the presence of contaminating genomic
DNA by PCR and then reverse transcribed with random primers using the SuperScript[®] VILO
130 (Invitrogen). The amplification of the V3-V5 region of the 16S rRNA genes was performed
with universal archaeal primers Arch349F and Arch806R (Table 1, [38]), followed by
pyrosequencing using a Roche 454 GS-FLX system with titanium chemistry by a commercial
laboratory (MR.DNA, Shallowater, TX, USA).

135 **Bioinformatic analysis**

The 16S rRNA pyrosequencing dataset represented 175,637 raw sequences. Cleaning
procedures consisted in the elimination of sequences presenting ambiguous bases “N”, a
quality score < 25 , length less than 200bp and with a mismatch in the forward primer. The
remaining reads were clustered at 97% similarity threshold [39] and representative sequence
140 for each OTU were inserted in phylogenetic trees for taxonomic annotation. The process was
automated by PANAM that also computed richness and diversity indexes, Chao1 and
Shannon respectively ([http://code.google.com/p/panam-phylogenetic-annotation/
downloads/list](http://code.google.com/p/panam-phylogenetic-annotation/downloads/list); [40]). Chimeras were detected using Uchime [41] and represented 1% of the
cleaned sequences. After the removal of sequences affiliated with *Bacteria*, the dataset
145 contained a total of 27,803 archaeal sequences distributed into 1825 OTUs (Supplementary
Table 1). Several sequences were affiliated with *Bacteria* belonging to the *Verrucomicrobia*
phylum suggesting that the chosen *Archaea* primers were not as specific as thought, and that
they may not have amplified all archaeal sequences in the estuary. For the analysis of the

seasonal dynamics, the 16S rRNA samples were randomly resampled down to 212 sequences
150 using PANAM.

A phylogenetic tree including OTUs retrieved in the 3 sampling stations was
constructed by aligning both OTUs and reference sequences from the literature using Muscle
[42] and neighbor joining phylogenies were built using Mega5 [43] and a bootstrap iteration
of 500. This allowed us to delineate major *Thaumarchaeota* MGI clusters and evaluate the
155 proportion of OTUs belonging to each cluster retrieved in each station.

RT quantitative PCR analysis

The qPCR protocol modified from Hugoni *et al.* [9] targeted the cDNA transcribed and
included the primers described in the Table 1. Briefly, transcript numbers of thaumarchaeal
160 *amoA* and *ureC* and bacterial *amoA* were determined in triplicate. The reaction mixture (25
 μL) contained MESA GREEN qPCR MasterMix Plus for SYBR Assay[®] (1X, Eurogentec)
added with 0.8 μg of BSA, 0.7 μM of primers and ultra-pure sterile water. One μL of cDNA
was added to 24 μL of mix in each well. qPCR reactions consisted of an initial denaturing
step at 94°C (for 15min for thaumarchaeal *amoA*, and 5min for thaumarchaeal *ureC* and
165 bacterial *amoA* transcripts) followed by 40 cycles (thaumarchaeal *amoA*: 94°C 15sec, 52°C
30sec, 72°C 30sec; thaumarchaeal *ureC*: 94°C 1min, 55°C 1min, 72°C 2min and bacterial
amoA: 95°C 30sec, 56°C 40sec, 72°C 2min). Standard curves were generated from a mix of
clone representatives from the environments studied (sequences were obtained using the Arch
AmoR and Arch AmoF primers [44] and have been archived in GenBank under accession
170 numbers: KF432403 and KF432404 for the thaumarchaeal *ureC* gene, JN089917 and
JN089905 for the archaeal *amoA* gene, JX003650 and JX003657 for the bacterial *amoA*
gene). All reactions were performed with standard curves spanning from 10^1 to 10^8 copies per
 μL . Mean PCR efficiencies and correlation coefficients for standard curves were as follows:

for the thaumarchaeal *ureC* assay, 98 %, $r^2 = 0.98$, for the thaumarchaeal *amoA* assay, 108 %, $r^2 = 1.00$, and for the bacterial *amoA* assay, 107 %, $r^2 = 1.00$.

Statistical analysis

Canonical correspondence analysis (CCA) was performed to assess the relationships between active archaeal taxonomic groups and environmental parameters. CCA was performed on 6 environmental factors (temperature, salinity, Chla content, pH, phosphate, and ammonium concentrations) and the taxonomic groups abundance matrix (inferred from 16S rRNA reads number).

To explain the variation of archaeal *amoA* and *ureC* transcripts abundance, a redundancy analysis (RDA) was used after a forward selection [45] of the 10 thaumarchaeal OTUs susceptible to explain a significant part of changes in archaeal *amoA* and *ureC* transcripts abundance (inferred from the qPCR assays).

The statistical analyses were conducted using R associated to the package VEGAN (<http://cran.r-project.org/web/packages/vegan/index.html>).

Results

Environmental characteristics of the Charente estuary

Three stations of the Charente estuary (Figure 1) were sampled monthly during one year along a salinity gradient (Supplementary Table 1). The freshwater, mesohaline and marine stations were characterized by a mean salinity of 0, 14.9 and 33.2 PSU and a mean Chla concentration of 17.6, 4.34 and 2.74 $\mu\text{g L}^{-1}$, respectively (Supplementary Table 1). Ammonia concentrations were on average lower in the marine station (0.019 mg L^{-1} , $\text{SD}=0.034$) than in the freshwater station (0.081 mg L^{-1} , $\text{SD}=0.035$). Conversely phosphate concentrations were

higher in the marine station (0.096 mg L⁻¹, SD=0.056) than in the freshwater station (0.038 mg L⁻¹, SD=0.034).

200

Bacterial and archaeal *amoA* and archaeal *ureC* transcript dynamics

Archaeal and bacterial *amoA* transcript numbers were quantified by RT-qPCR during one year (Figure 2.A and B). Few archaeal *amoA* transcripts were detected overall in the freshwater station. Nevertheless, three distinct periods of higher transcript numbers were observed: one from May to June, then a second during September and October and finally from December to January (Figure 2.A). The mesohaline station was characterized by higher archaeal *amoA* transcript numbers from May to September with a peak in June. Conversely, the marine archaeal *amoA* transcript numbers showed an increase in abundance from October to January, with a peak in January.

210

In the freshwater station, bacterial *amoA* transcript numbers increased first in June and then peaked in September, reaching up to 225 times more transcripts than *Archaea* at the same period (Figure 2.B). In the mesohaline station, bacterial *amoA* transcripts showed similar dynamics to that of *Archaea* with three peaks, although their magnitude was overall lower. The marine station had the lowest number of bacterial *amoA* transcripts, with an increase from August to October, earlier in the year compared to archaeal *amoA*.

215

Thaumarchaeal *ureC* transcript abundance was also determined using RT-qPCR during a one-year period to assess the genetic potential of estuarine *Archaea* for ureolytic nitrogen metabolism (Figure 2.C). Transcript numbers were overall very low but were still within the detection range according to our standard curve. The freshwater station presented the highest transcripts abundance that corresponded precisely to the periods of highest archaeal *amoA* abundance in this station. In both the mesohaline and marine stations, lower

220

numbers of *ureC* transcripts were detected all year, except in May and June at the mesohaline station when numbers were slightly higher.

225 **Active Archaea community structure and dynamics**

The changes in the community structure of active archaeal populations were evaluated over time from river to sea by pyrosequencing cDNA from the 16S rRNA gene (Supplementary Table 1). The community diversity was evaluated through the Shannon index on normalized datasets, and was significantly higher in the freshwater than in the marine station (t-test, $p = 0.008$, Supplementary Figure 1). Moreover, the number of OTUs was also different between stations with 550 OTUs observed in the freshwater station against 923 and 352 in the mesohaline and marine stations respectively. We did not manage to amplify archaeal cDNA from October to November at the marine station.

We evaluated active archaeal community composition, based on 16S rRNA transcripts, and focused on the three main periods of high archaeal *amoA* transcripts abundance. In the freshwater station, different patterns of community composition were visible with time (Figure 3). The 16S rRNA *Thaumarchaeota* MGI sequences were more abundant from April to November representing about 83% of the archaeal sequences. These *Thaumarchaeota* were dominated by 11 different OTUs with best Blast match to sequences recovered from lacustrine freshwaters, groundwater, rivers and mangrove sediments. In contrast, the number of sequences affiliated with methanogenic groups (i.e. *Methanosaeta*, *Methanoregula*, *Methanoculleus*, *Methanomicrobiales*, *Methanospirillum*) increased from December to March reaching up to 60% of the sequences. Five methanogen OTUs all belonging to the *Methanosaeta* genus dominated. They were closely related to sequences found in salt marsh and lacustrine sediments, but also retrieved in groundwater and wetlands.

Among *Euryarchaeota* we detected few members of the Rice Cluster-V (RC-V) and Deep-sea Hydrothermal Vent Euryarchaeotic Group – 6 (DHVEG-6).

In the mesohaline station, the potentially active archaeal community was clearly dominated by *Thaumarchaeota* MGI all year round (from 86% to 93% of the sequences, Figure 3), but by different subgroups at different times (Figure 4). Within *Euryarchaeota*, few methanogenic lineages were retrieved in the mesohaline station and, *Euryarchaeota* MGII represented about 7% of the sequences between December and March.

In the marine station, we could also distinguish changes with seasons. From April to August, *Thaumarchaeota* MGI represented about 17% of the 16S rRNA transcripts, the remaining being almost exclusively *Euryarchaeota* MGII sequences (around 81%). Conversely, from December to March, *Thaumarchaeota* MGI represented about 70% of the sequences while *Euryarchaeota* MGII accounted for 27% of the sequences. Six abundant *Thaumarchaeota* OTUs were related to marine waters sequences but also to lacustrine freshwater, groundwater, rivers and mangrove sediment. On the other hand, the fifteen abundant *Euryarchaeota* OTUs were related to marine sequences.

The canonical correspondence analysis showed that *Euryarchaeota* MGII was mainly related to salinity and consequently to the marine station. On the other hand, the potentially active *Thaumarchaeota* MGI were linked to the mesohaline station, while the majority of euryarchaeal groups (i.e. methanogenic lineages, RC-V, Lake Dagow Sediment cluster (LDS), Miscellaneous Euryarchaeotic Group (MEG), Miscellaneous Crenarchaeotic Group (MCG)) were related to ammonia and to the freshwater station (Supplementary Figure 2).

We used all *Thaumarchaeota* MGI OTUs retrieved in all the stations to build a phylogenetic tree. The potentially active OTUs fell into six major subclusters (Figure 4). Among them, the clusters Marine A and B were initially recovered in marine ecosystems [35,46] and the clusters Freshwater A and B, in freshwaters [9,44]. Interestingly, we also

found OTUs belonging to a subcluster related to sediments. OTUs present in the freshwater station belonged mainly to the Freshwater A and Sediment associated groups, while those in the mesohaline and the marine stations clustered mainly with sequences belonging to the Marine A subcluster. OTUs common to both the freshwater and the mesohaline stations fell
275 into the Sediment subcluster while those that were specific of the mesohaline and marine station mostly fell into the Marine A subcluster.

We further analyzed *Thaumarchaeota* MGI OTUs present in the mesohaline station and identified 3 monophyletic subclusters within the *Thaumarchaeota* MGI_Marine A cluster (Figure 4). Each of these subclusters had a specific seasonal dynamics (Supplementary Table
280 2 and 3). The first subcluster named MGI.A.b was potentially active from April to August, the second named MGI.A.a from September to November and the last one called MGI.A.c from December to March (Figure 4).

To gain insight into possible associations between 16S rRNA OTUs and functional genes, we used a forward redundancy analysis (RDA) of *amoA* and *ureC* transcript
285 abundances against the most abundant thaumarchaeal OTUs retrieved in all sampling stations (Figure 5). The ten most informative OTUs (i.e. accounting for 77% of the total variation) were selected to build a RDA. It showed that the potential ureolytic metabolism was correlated to three OTUs (R16_HUJB0N002GU20W, R24_HUJB0N002JCR91 and R10_HUJB0N002JLORV), affiliated with the Sediment and Freshwater A subclusters (Figure
290 4). On the other hand, the *amoA* potential activity was correlated with six OTUs among which five were affiliated with the Marine A subcluster while the last one was affiliated with the Freshwater B subcluster.

Discussion

295 The quantification of *amoA* transcript abundance in the surface waters of the Charente estuary
over a 1-year period showed a transition in active ammonia-oxidizing populations from AOB
in freshwaters to AOA in marine waters. The higher AOB transcript numbers in the
freshwater station is in agreement with previous studies suggesting that AOB potential
nitrification rates were inhibited in high salinity environment (around 30 PSU [27]).
300 Nevertheless, even if salinity appears to be an important factor in determining AOB
distribution, Bernhard *et al.* [27] showed that AOB exhibited a broad range of salinity
tolerance, suggesting that other environmental parameters needed to be considered to
understand their activity dynamics. In contrast, AOA potential activity was very low in
freshwater, while intermediary estuarine conditions (mesohaline station) favored higher
305 transcript abundance through the whole year. In contrast, previous studies based on DNA,
have shown that archaeal *amoA* genes were more abundant in freshwater [13,14,47].
However, these studies and our data showed that the highest thaumarchaeal transcript
abundance was retrieved when ammonia concentrations were the lowest, probably because of
the high apparent affinity of *Thaumarchaeota* for reduced nitrogen [48]. In the marine station,
310 thaumarchaeal *amoA* transcript numbers were more important during the winter period,
consistent with previous results showing highest archaeal *amoA* gene abundance in winter in
the Mediterranean Sea [7]. Winter may be a period during which *Thaumarchaeota* MGI are
more active and win the competition for ammonia against *Bacteria* [49]. In our study, AOA
activity evaluated through 16S rRNA could not be statistically linked to any of the
315 environmental parameters measured, suggesting that other factors (i.e. other physico-chemical
parameters or bottom up controls) shape AOA activity in this ecosystem.

We detected possible *Thaumarchaeota* MGI ecotypes presenting different seasonal
dynamics and associated with varying levels of potential ammonia oxidation activity. In
particular, the changes observed among Marine A subclusters suggest that the phylogenetic

320 diversity was associated with contrasted seasonal conditions. The variable potential activity levels of the different *Thaumarchaeota* MGI subclusters could suggest an adaptation to different niches and may indicate an ecological specialization, supporting the notion that different *Thaumarchaeota* MGI could have different metabolisms [21]. Although we could not precisely define ecological niches in the present study, our work confirms the idea that

325 *Thaumarchaeota* MGI is composed of different ecotypes, as previously proposed for the coastal Mediterranean Sea [35,50] and lakes [16,51,52]. The use of ureolysis to supply ammonia when AOB activity dominates is a possible example of the specific adaptations of some *Thaumarchaeota* MGI ecotypes to particular niches. This was illustrated in our study through the finding that the *Thaumarchaeota ureC* transcripts were detected in the freshwater

330 station, when AOB *amoA* transcripts outnumbered AOA. *Thaumarchaeota* MGI could use urea to fuel nitrification and thus adopt an alternative metabolic pathway when the availability of ammonia is limited and/or when competitors are present [18]. In our study, the presence of *ureC* transcripts was associated to the presence of specific *Thaumarchaeota* MGI OTUs affiliated with the Freshwater A and Sediment subclusters. Not all *Thaumarchaeota* MGI

335 OTUs might be able to use urea for nitrification, as illustrated by the weak *ureC* transcripts number found in the marine station despite the high abundance of *Thaumarchaeota* and as suggested by the absence of the *ureC* gene in the *N. maritimus* genome [19]. Thus we hypothesize that only some specific clusters have the ureolytic potential, and that this metabolism is preferentially present in *Thaumarchaeota* from freshwater systems. However,

340 caution is needed when interpreting such results as the detection of genes and transcripts does not warranty metabolic activities of *Archaea*. It was for instance recently suggested that *Thaumarchaeota* expressing *amoA* are not obligate ammonia oxidizers [53], and thus *amoA*-carrying *Archaea* are not necessarily ammonia oxidizers [54]. More work is needed to understand if and what AOA are involved in urea utilization and under which conditions.

345 The occurrence of active methanogenic groups in the freshwater station, particularly
abundant during the winter months (December-March), may be due to the presence of
sediments or mud mixed with the water during rainfalls and/or storms. Our results also
suggest that the types of methanogens present may thrive better in freshwater environments
rather than in marine and brackish environments. The retrieval of sequences affiliated with
350 methanogens in the mesohaline station could suggest that they were slowly dispersed from
their habitat (i.e. freshwater), resulting in decreasing activity with increasing salinity [55].
Some specific freshwater groups like LDS or RC-V clusters were also found (4.8 and 11.9 %
of the reads respectively), indicating discharge from nearby rivers and from the catchment
area. The RC-V and LDS cluster represent highly diverse groups of *Euryarchaeota* detected
355 in various ecosystems [56]. They have been identified in rivers [30,31] where they represent a
large proportion of the archaeal cell counts [31]. In the marine station, there was a clear
succession between *Thaumarchaeota* MGI and *Euryarchaeota* MGII. The predominance of
potentially active *Thaumarchaeota* MGI occurred during the winter period, as previously
shown in the North-Western Mediterranean Sea [35]. *Euryarchaeota* MGII dominated the
360 active archaeal assemblage during the summer period. The putative presence of genes
encoding the proteorhodopsin, retrieved in members of marine *Euryarchaeota* MGII.a [57,58]
could explain the ecological success of this group in the marine station. Our study also
confirms the potential activity of some less abundant groups, like Marine Benthic Group B
(MBG-B) and the recently proposed “*Bathyarchaeota*” formerly known as Miscellaneous
365 Crenarchaeotic Group [59,60] retrieved in the freshwater and mesohaline stations. This
suggests that these groups considered as ubiquitous [61] and usually found in sediments [62]
could be active in estuarine water column. A recent study using a single-cell genome
approach reported that some members of the MCG are capable of protein remineralization in

anoxic sediments and it may be that these organisms are undertaking such a process in this
370 environment [63].

In summary, our study clearly showed that the potential activity of prokaryotic
nitrifiers was influenced by the physico-chemical gradients retrieved through an estuarine
ecosystem. At the domain level, *Archaea* and *Bacteria* occupied different ecological niches
with AOB being more active in freshwater and AOA in marine waters. Our results also
375 suggest the presence of different thaumarchaeal ecotypes, which maybe able to degrade urea
adding to the growing evidence that additional metabolisms may be present within
Thaumarchaeota.

Acknowledgments

380 We thank P. Pineau, N. Lachaussée, M. Breret, F. Mornet, L. Beaugeard, J. Lavaud and J.
Jourde for the sampling. We thank A. Vellet, I. Louati, M. Breret and C. Lavergne for their
technical support during the experimentations, J.C. Auguet for providing us the map of the
sampling location of the stations. This work was supported by a CNRS Program Ecosphère
Continentale et Côtière (EC2CO, 2010–2012). The work of PE Galand was supported by the
385 Agence Nationale de la Recherche (ANR) project MICADO (ANR-11JSV7-003-01).

References

1. DeLong EF (1992) *Archaea* in coastal marine environments. Proc Natl Acad Sci USA 89:
5685-5689.
- 390 2. Auguet JC, Casamayor EO (2008) A hotspot for cold *crenarchaeota* in the neuston of high
mountain lakes. Environ Microbiol 10: 1080-1086.
3. Hallam SJ, Mincer TJ, Schleper C, Preston CM, Roberts K, et al. (2006) Pathways of
carbon assimilation and ammonia oxidation suggested by environmental genomic
analyses of marine *Crenarchaeota*. PLoS Biol 4: e95.
- 395 4. Treusch AH, Leininger S, Kletzin A, Schuster SC, Klenk HP, et al. (2005) Novel genes for
nitrite reductase and Amo-related proteins indicate a role of uncultivated mesophilic
crenarchaeota in nitrogen cycling. Environ Microbiol 7: 1985-1995.

5. Venter JC, Remington K, Heidelberg JF, Halpern AL, Rusch D, et al. (2004) Environmental genome shotgun sequencing of the Sargasso Sea. *Science* 304: 66-74.
- 400 6. Konneke M, Bernhard AE, de la Torre JR, Walker CB, Waterbury JB, et al. (2005) Isolation of an autotrophic ammonia-oxidizing marine archaeon. *Nature* 437: 543-546.
7. Galand PE, Gutierrez-Provecho C, Massana R, Gasol J, Casamayor EO (2010) Inter-annual recurrence of archaeal assemblages in the coastal NW Mediterranean Sea. *Limnol Oceanogr* 55: 2117-2125.
- 405 8. Mincer TJ, Church MJ, Taylor LT, Preston C, Karl DM, et al. (2007) Quantitative distribution of presumptive archaeal and bacterial nitrifiers in Monterey Bay and the North Pacific Subtropical Gyre. *Environ Microbiol* 9: 1162-1175.
9. Hugoni M, Etien S, Bourges A, Lepere C, Domaizon I, et al. (2013) Dynamics of ammonia-oxidizing *Archaea* and *Bacteria* in contrasted freshwater ecosystems. *Res Microbiol* 164: 360-370.
- 410 10. Vissers EW, Anselmetti FS, Bodelier PL, Muyzer G, Schleper C, et al. (2013) Temporal and spatial coexistence of archaeal and bacterial amoA genes and gene transcripts in Lake Lucerne. *Archaea* 2013: 289478.
11. Beman JM, Popp BN, Francis CA (2008) Molecular and biogeochemical evidence for ammonia oxidation by marine *Crenarchaeota* in the Gulf of California. *ISME J* 2: 429-441.
- 415 12. Magalhães C, Machado A, Bordalo A (2009) Temporal variability in the abundance of ammonia oxidizing bacteria vs. *archaea* in sandy sediments of the Douro River estuary, Portugal. *Aqua Microbial Ecol* 56: 13-23.
- 420 13. Mosier AC, Francis CA (2008) Relative abundance and diversity of ammonia-oxidizing *archaea* and bacteria in the San Francisco Bay estuary. *Environ Microbiol* 10: 3002-3016.
14. Santoro AE, Francis CA, de Sieyes NR, Boehm AB (2008) Shifts in the relative abundance of ammonia-oxidizing *bacteria* and *archaea* across physicochemical gradients in a subterranean estuary. *Environ Microbiol* 10: 1068-1079.
- 425 15. Bernhard AE, Bollmann A (2010) Estuarine nitrifiers: New players, patterns and processes. *Estuar, Coastal Shelf Sci* 88: 1-11.
16. Auguet JC, Triado-Margarit X, Nomokonova N, Camarero L, Casamayor EO (2012) Vertical segregation and phylogenetic characterization of ammonia-oxidizing *Archaea* in a deep oligotrophic lake. *ISME J* 6: 1786-1797.
- 430 17. Qin W, Amin SA, Martens-Habbena W, Walker CB, Urakawa H, et al. (2014) Marine ammonia-oxidizing archaeal isolates display obligate mixotrophy and wide ecotypic variation. *Proc Natl Acad Sci USA* 111: 12504-12509.
18. Alonso-Saez L, Waller AS, Mende DR, Bakker K, Farnelid H, et al. (2012) Role for urea in nitrification by polar marine *Archaea*. *Proc Natl Acad Sci USA* 109: 17989-17994.
- 435 19. Walker CB, de la Torre JR, Klotz MG, Urakawa H, Pinel N, et al. (2010) *Nitrosopumilus maritimus* genome reveals unique mechanisms for nitrification and autotrophy in globally distributed marine crenarchaea. *Proc Natl Acad Sci USA* 107: 8818-8823.
20. Pedneault E, Galand PE, Potvin M, Tremblay JE, Lovejoy C (2014) Archaeal amoA and ureC genes and their transcriptional activity in the Arctic Ocean. *Sci Rep* 4: 4661.
- 440 21. Beam JP, Jay ZJ, Kozubal MA, Inskeep WP (2014) Niche specialization of novel Thaumarchaeota to oxic and hypoxic acidic geothermal springs of Yellowstone National Park. *ISME J* 8: 938-951.
- 445 22. Konneke M, Schubert DM, Brown PC, Hugler M, Standfest S, et al. (2014) Ammonia-oxidizing archaea use the most energy-efficient aerobic pathway for CO₂ fixation. *Proc Natl Acad Sci U S A* 111: 8239-8244.

23. Herlemann DP, Labrenz M, Jurgens K, Bertilsson S, Waniek JJ, et al. (2011) Transitions in bacterial communities along the 2000 km salinity gradient of the Baltic Sea. *ISME J* 5: 1571-1579.
- 450 24. Kirchman DL, Dittel AI, Malmstrom RR, Cottrell MT (2005) Biogeography of major bacterial groups in the Delaware Estuary. *Limnol Oceanogr* 50: 1697-1706.
25. Lozupone CA, Knight R (2007) Global patterns in bacterial diversity. *Proc Natl Acad Sci USA* 104: 11436-11440.
- 455 26. Auguet JC, Barberan A, Casamayor EO (2009) Global ecological patterns in uncultured *Archaea*. *ISME J* 4: 182-190.
27. Bernhard AE, Tucker J, Giblin AE, Stahl DA (2007) Functionally distinct communities of ammonia-oxidizing bacteria along an estuarine salinity gradient. *Environ Microbiol* 9: 1439-1447.
- 460 28. Santoro AE, Casciotti K, Francis CA (2010) Activity, abundance and diversity of nitrifying archaea and bacteria in the central California Current. *Environ Microbiol Reports* 12: 1989-2006.
29. Galand PE, Lovejoy C, Pouliot J (2008) Microbial community diversity and heterotrophic production in a coastal Arctic ecosystem: A stamukhi lake and its source waters. *Limnol Oceanogr* 53: 813-823.
- 465 30. Galand PE, Lovejoy C, Vincent WF (2006) Remarkably diverse and contrasting archaeal communities in a large arctic river and the coastal Arctic Ocean. *Aquat Microb Ecol* 44: 115-126.
31. Herfort L, Kim JH, Coolen MJL, Abbas B, Schouten S, et al. (2009) Diversity of *Archaea* and detection of crenarchaeotal *amoA* genes in the river Rhine and Têt. *Aquat Microb Ecol* 55: 189-201.
- 470 32. Alonso-Saez L, Balague V, Sa EL, Sanchez O, Gonzalez JM, et al. (2007) Seasonality in bacterial diversity in north-west Mediterranean coastal waters: assessment through clone libraries, fingerprinting and FISH. *FEMS Microbiol Ecol* 60: 98-112.
- 475 33. Mary I, Cummings DG, Biegala IC, Burkill PH, Archer SD, et al. (2006) Seasonal dynamics of bacterioplankton community structure at a coastal station in the western English Channel *Aqua Microbial Ecol* 42: 119-126.
34. Campbell BJ, Yu L, Heidelberg JF, Kirchman DL (2011) Activity of abundant and rare *bacteria* in a coastal ocean. *Proc Natl Acad Sci USA* 108: 12776-12781.
- 480 35. Hugoni M, Taib N, Debroas D, Domaizon I, Jouan Dufournel I, et al. (2013) Structure of the rare archaeal biosphere and seasonal dynamics of active ecotypes in surface coastal waters. *Proc Natl Acad Sci USA* 110: 6004-6009.
36. Lorenzen CJ (1967) Determination of chlorophyll and pheopigments: spectrophotometric equations. *Limnol Oceanogr* 12: 343-346.
37. Strickland J, Parsons T (1968) A practical handbook of sea water analysis.
- 485 38. Takai K, Horikoshi K (2000) Rapid detection and quantification of members of the archaeal community by quantitative PCR using fluorogenic probes. *Appl Environ Microbiol* 66: 5066-5072.
39. Kim M, Morrison M, Yu Z (2011) Evaluation of different partial 16S rRNA gene sequence regions for phylogenetic analysis of microbiomes. *J Microbiol Methods* 84: 81-87.
- 490 40. Taib N, Mangot JF, Domaizon I, Bronner G, Debroas D (2013) Phylogenetic affiliation of SSU rRNA genes generated by massively parallel sequencing: new insights into the freshwater protist diversity. *PLoS One* 8: e58950.
- 495 41. Edgar RC, Haas BJ, Clemente JC, Quince C, Knight R (2011) UCHIME improves sensitivity and speed of chimera detection. *Bioinformatics* 27: 2194-2200.

42. Edgar RC (2004) MUSCLE: multiple sequence alignment with high accuracy and high throughput. *Nucleic Acids Res* 32: 1792-1797.
43. Tamura K, Peterson D, Peterson N, Stecher G, Nei M, et al. (2011) MEGA5: molecular evolutionary genetics analysis using maximum likelihood, evolutionary distance, and maximum parsimony methods. *Mol Biol Evol* 28: 2731-2739.
- 500 44. Francis CA, Roberts KJ, Beman JM, Santoro AE, Oakley BB (2005) Ubiquity and diversity of ammonia-oxidizing *archaea* in water columns and sediments of the ocean. *Proc Natl Acad Sci USA* 102: 14683-14688.
45. Borcard D, Legendre P, Drapeau P (1992) Partialling out the spatial component of ecological variation. *Ecology* 73: 1045-1055.
- 505 46. Massana R, DeLong EF, Pedros-Alio C (2000) A few cosmopolitan phylotypes dominate planktonic archaeal assemblages in widely different oceanic provinces. *Appl Environ Microbiol* 66: 1777-1787.
47. Abell GC, Revill AT, Smith C, Bissett AP, Volkman JK, et al. (2010) Archaeal ammonia oxidizers and nirS-type denitrifiers dominate sediment nitrifying and denitrifying populations in a subtropical macrotidal estuary. *ISME J* 4: 286-300.
- 510 48. Martens-Habbena W, Berube PM, Urakawa H, de la Torre JR, Stahl DA (2009) Ammonia oxidation kinetics determine niche separation of nitrifying Archaea and Bacteria. *Nature* 461: 976-979.
- 515 49. Winter C, Bouvier T, Weinbauer MG, Thingstad TF (2010) Trade-offs between competition and defense specialists among unicellular planktonic organisms: the "killing the winner" hypothesis revisited. *Microbiol Mol Biol Rev* 74: 42-57.
50. Sintes E, Bergauer K, De Corte D, Yokokawa T, Herndl GJ (2013) Archaeal *amoA* gene diversity points to distinct biogeography of ammonia-oxidizing *Crenarchaeota* in the ocean. *Environ Microbiol* 15: 1647-1658.
- 520 51. Auguet JC, Casamayor EO (2013) Partitioning of *Thaumarchaeota* populations along environmental gradients in high mountain lakes. *FEMS Microbiol Ecol* 84: 154-164.
52. Restrepo-Ortiz CX, Auguet JC, Casamayor EO (2013) Targeting spatiotemporal dynamics of planktonic SAGMGC-1 and segregation of ammonia-oxidizing thaumarchaeota ecotypes by newly designed primers and quantitative polymerase chain reaction. *Environ Microbiol* 16: 689-700.
- 525 53. Mußmann M, Brito I, Pitcher A, Sinninghe Damste JS, Hatzenpichler R, et al. (2011) Thaumarchaeotes abundant in refinery nitrifying sludges express *amoA* but are not obligate autotrophic ammonia oxidizers. *Proc Natl Acad Sci USA* 108: 16771-16776.
- 530 54. Pester M, Rattei T, Flechl S, Grongroft A, Richter A, et al. (2011) *amoA*-based consensus phylogeny of ammonia-oxidizing *archaea* and deep sequencing of *amoA* genes from soils of four different geographic regions. *Environ Microbiol* 14: 525-539.
55. Pulliam HR (1988) Sources, sinks, and population regulation. *The American Naturalist* 132: 652-661.
- 535 56. Barberan A, Fernandez-Guerra A, Auguet JC, Galand PE, Casamayor EO (2011) Phylogenetic ecology of widespread uncultured clades of the Kingdom *Euryarchaeota*. *Mol Ecol* 20: 1988-1996.
57. Frigaard NU, Martinez A, Mincer TJ, DeLong EF (2006) Proteorhodopsin lateral gene transfer between marine planktonic Bacteria and *Archaea*. *Nature* 439: 847-850.
- 540 58. Iverson V, Morris RM, Frazar CD, Berthiaume CT, Morales RL, et al. (2012) Untangling genomes from metagenomes: revealing an uncultured class of marine *Euryarchaeota*. *Science* 335: 587-590.
59. Meng J, Xu J, Qin D, He Y, Xiao X, et al. (2014) Genetic and functional properties of uncultivated MCG archaea assessed by metagenome and gene expression analyses. *ISME J* 8: 650-659.
- 545

60. Webster G, O'Sullivan LA, Meng Y, Williams AS, Sass AM, et al. (2015) Archaeal community diversity and abundance changes along a natural salinity gradient in estuarine sediments. *FEMS Microbiol Ecol* 91: 1-18.
- 550 61. Inagaki F, Nunoura T, Nakagawa S, Teske A, Lever M, et al. (2006) Biogeographical distribution and diversity of microbes in methane hydrate-bearing deep marine sediments on the Pacific Ocean Margin. *Proc Natl Acad Sci USA* 103: 2815-2820.
62. Singh SK, Verma P, Ramaiah N, Chandrashekar AA, Shouche YS (2010) Phylogenetic diversity of archaeal 16S rRNA and ammonia monooxygenase genes from tropical estuarine sediments on the central west coast of India. *Res Microbiol* 161: 177-186.
- 555 63. Lloyd KG, Schreiber L, Petersen DG, Kjeldsen KU, Lever MA, et al. (2013) Predominant *archaea* in marine sediments degrade detrital proteins. *Nature* 496: 215-218.

Figures and tables legend

560

Figure 1. Location of sampling stations (median position over 12 sampling dates) along the Charente Estuary. The freshwater station was called A, the mesohaline station: C, and the marine station: E.

Figure 2. Abundances of thaumarchaeal (A) and bacterial (B) *amoA* transcripts and (C) 565 thaumarchaeal *ureC* transcripts per mL of water during the one year survey.

Figure 3. Proportion of 16S rRNA genes transcripts for archaeal groups retrieved in the freshwater station, the mesohaline station, and the marine station during three distinct periods: from April to August, from September to November and from December to March.

Figure 4. 16S rRNA transcripts phylogenetic tree including potentially active 570 *Thaumarchaeota* MGI OTUs retrieved in the three sampling stations of the Charente estuary. Bootstrap values >40 are shown. Histograms on the right represented the number of OTUs retrieved in each station, in the freshwater and mesohaline stations, in the mesohaline and marine stations and in the 3 stations. Seasonal changes in *Thaumarchaeota* OTUs from the Marine A cluster were illustrated for OTUs in the mesohaline station which were active from 575 September to November (■), from April to August (●), and from December to March (▲).

Figure 5. RDA plot of *ureC* and *amoA* transcripts abundance (□) compared with active abundant *Thaumarchaeota* MGI OTUs (▲) according to the stations sampling points (●). The correspondant abbreviated names for OTUs were as follows: R24_HUJ (R24_HUJB0N002JCR91), R10_HUJ (R10_HUJB0N002JLORV), R16_HUJ (R16_HUJB0N002GU20W), R34_HUJ (R34_HUJB0N002JELSP), R8_HTR (R8_HTRM39R02IN9W4), R16_HUJ (R16_HUJB0N002ITPEH), R17_HTR (R17_HTRM39R02HMXG2), R22_HTR (R22_HTRM39R02HVYCX), D32_HUJ (D32_HUJB0N002F6TFA), R22_HTR (R22_HTRM39R02GQZTZ).

Table 1. Primers used for qPCR and pyrosequencing, and PCR annealing conditions used in
585 this study.

Supplementary Data

Supplementary Figure 1. Box plot of Shannon index from the three different sampling stations. A significant difference in diversity between two stations is marked with a star (*, $p < 0.008$).

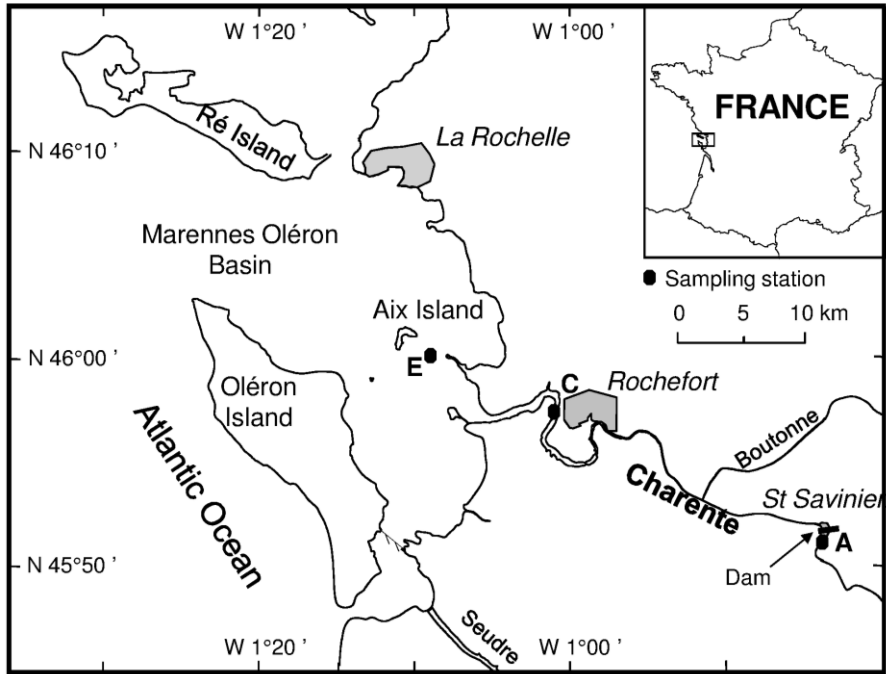
Supplementary Figure 2. Ordination diagram from CCA of major active archaeal groups compared with environmental data.

Supplementary Table 1. Quality checked (QC) and *Archaea* affiliated sequences obtained for each sample from surface water collected monthly in the Charente estuary. Environmental parameters (temperature, salinity, pH and Chl a , ammonia and phosphates concentrations) associated to each point are presented. ND: not determined.

Supplementary Table 2. Mean number of 16S rRNA sequences associated with each abundant OTU retrieved in the freshwater, mesohaline and marine stations. ND: not determined.

Supplementary Table 3. Monthly community structure at the subcluster level in *Thaumarchaeota* MGI. Number of OTUs were presented for each subgroup and number of sequences between brackets. ND: not determined.

605



610

Figure 1. Hugoni *et al.*

615

620

625

630

635

640

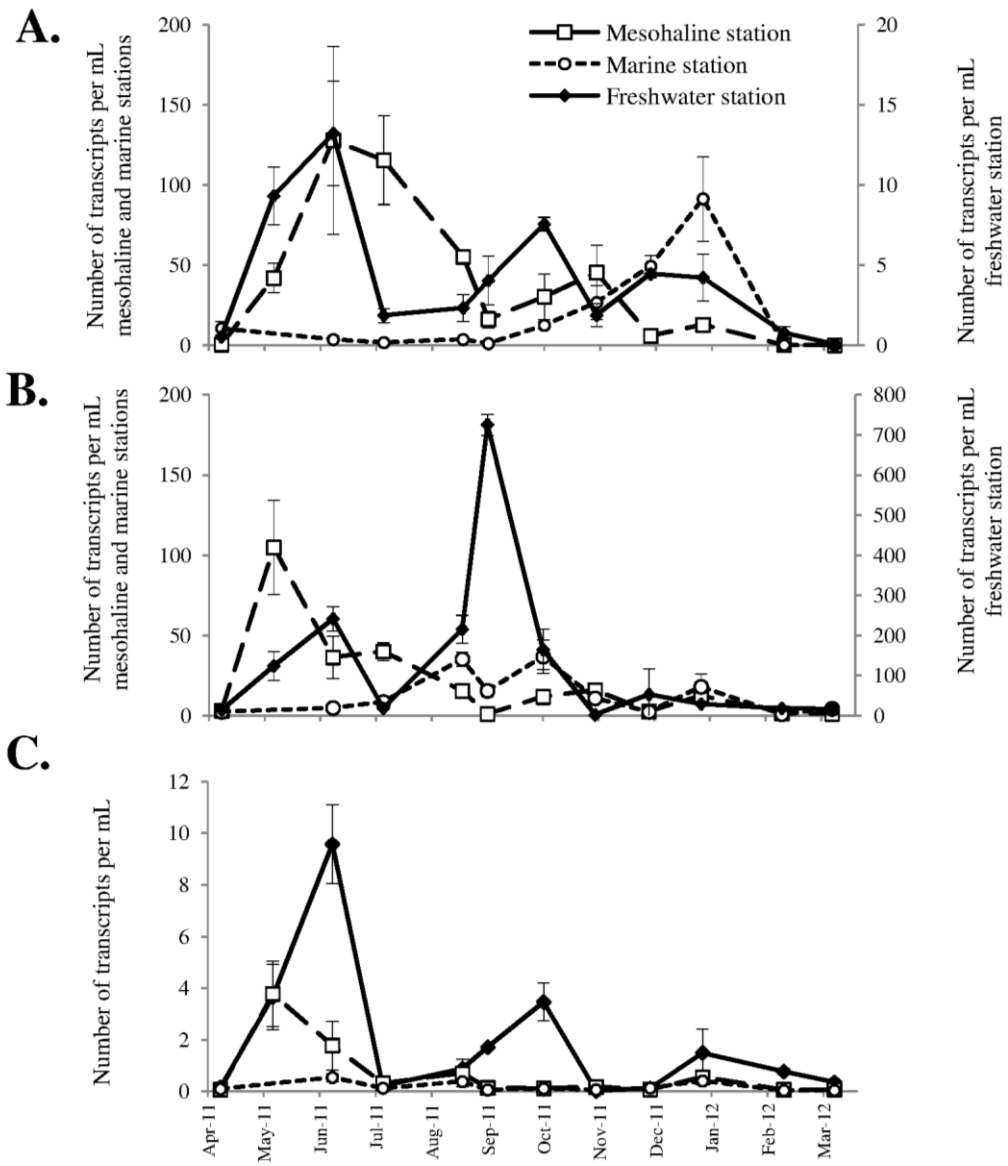
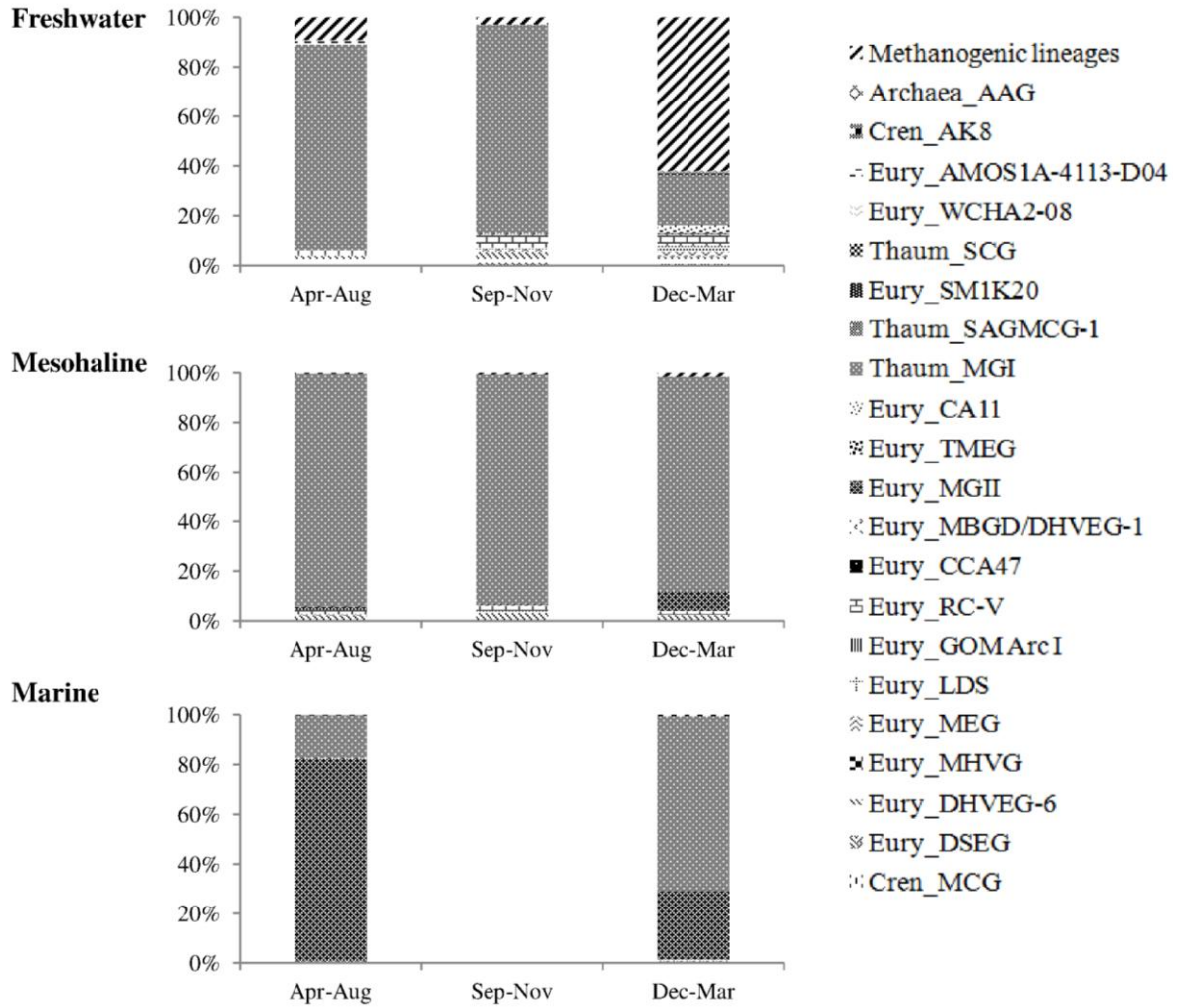


Figure 2. Hugoni *et al.*

645

650



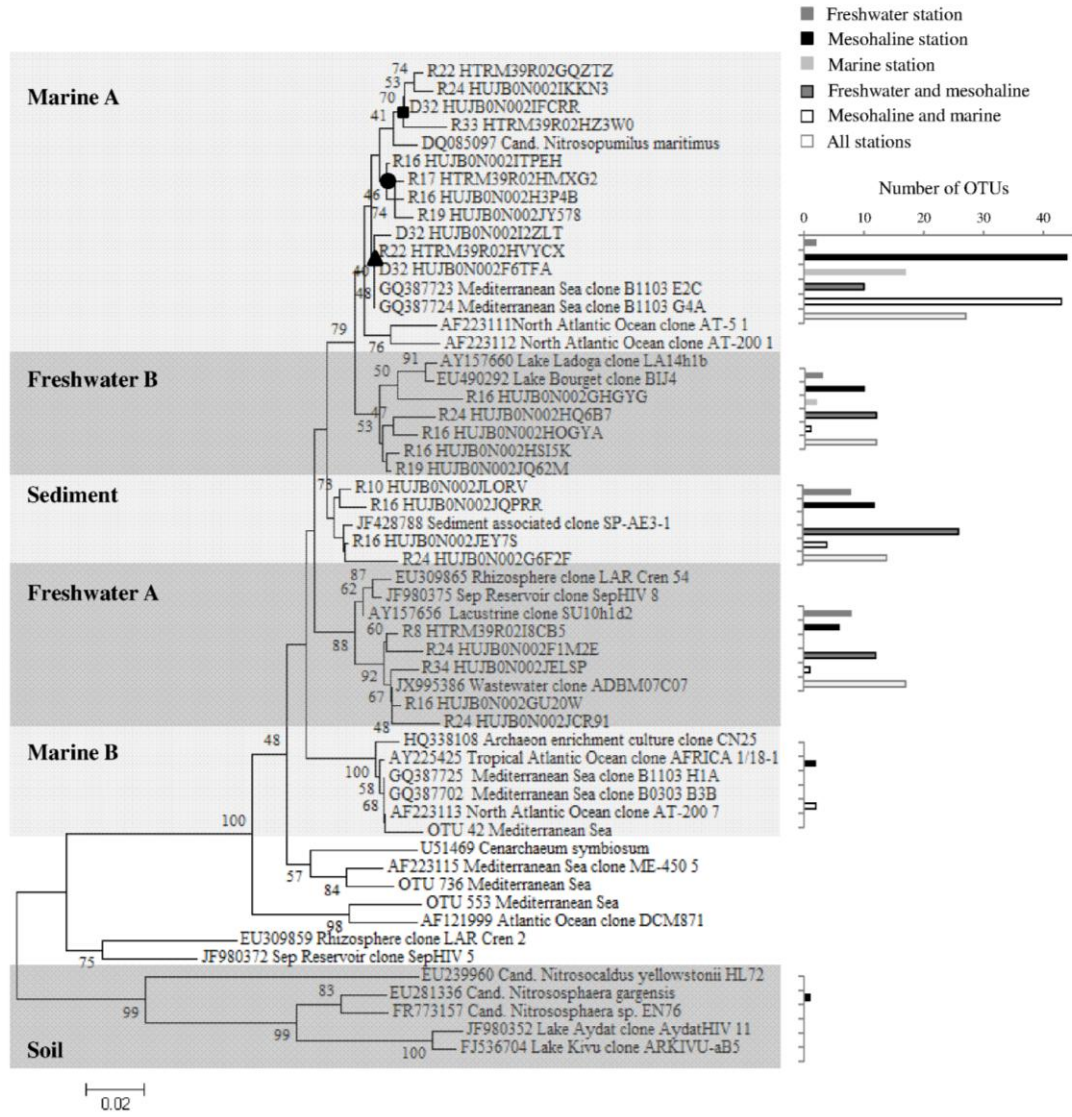
660

Figure 3. Hugoni *et al.*

665

670

675



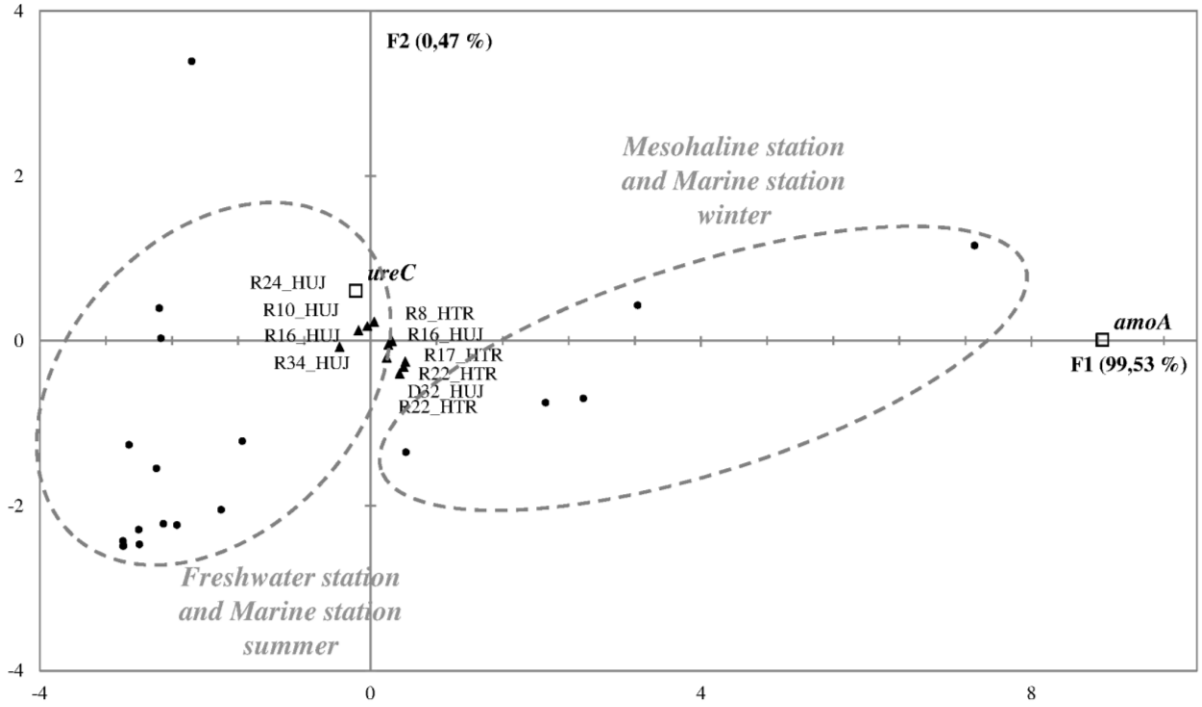
685

Figure 4. Hugoni *et al.*

690

695

700



705

Figure 5. Hugoni *et al.*

710

715

720

725

730

Application	Primer	Primer sequence 5' – 3'	Annealing temperature	Targeted group	Reference
qPCR	amoA-1F	GGGGTTTCTACTGGTGGT	56°C	β-proteobacterial <i>amoA</i>	Rotthauwe <i>et al.</i> , 1997
	AmoA-RNEW	CCCCTCBGSAAAVCCTTCTTC			
	CrenAmoAModF	TGGCTAAGACGMTGTA	52°C	Thaumarchaeal <i>amoA</i>	Mincer <i>et al.</i> , 2007
	CrenAmoAModR	AAGCGGCCATCCATCTGTA			
Thaum-UreC F	ATGCAATYTGTAATGGAACWACWAC	55°C	Thaumarchaeal <i>ureC</i>	Alonso-Saez <i>et al.</i> , 2012	
Thaum-UreC R	AGTTGTYCCCAATCTTCATGTAATTTTA				
Pyrosequencing	Arch349F	GYGCASCAGKCGMGAAW	55°C	Archaeal 16S rRNA	Takai <i>et al.</i> , 2000
	Arch 806R	GGACTACVSGGGTATCTAAT			
	amoA-1F	GGGGTTTCTACTGGTGGT	56°C	β-proteobacterial <i>amoA</i>	Rotthauwe <i>et al.</i> , 1997
	Bacamo2R	CCCCTCKGSAAAGCCTTCTTC			
	Arch-amoAF	STAATGGTCTGGCTTAGACG	53°C	Thaumarchaeal <i>amoA</i>	Francis <i>et al.</i> , 2005
	Arch-amoAR	GCGGCCATCCATCTGTATGT			

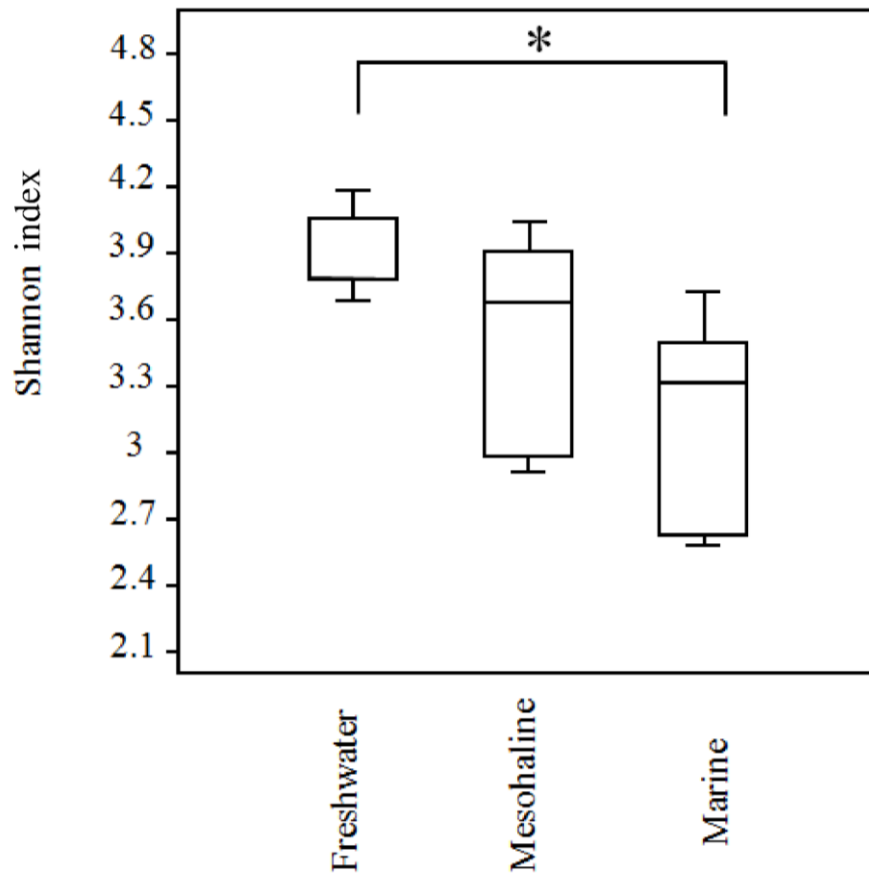
735

Table 1. Hugoni *et al.*

740

745

750



755

Supplementary Figure 1. Hugoni *et al.*

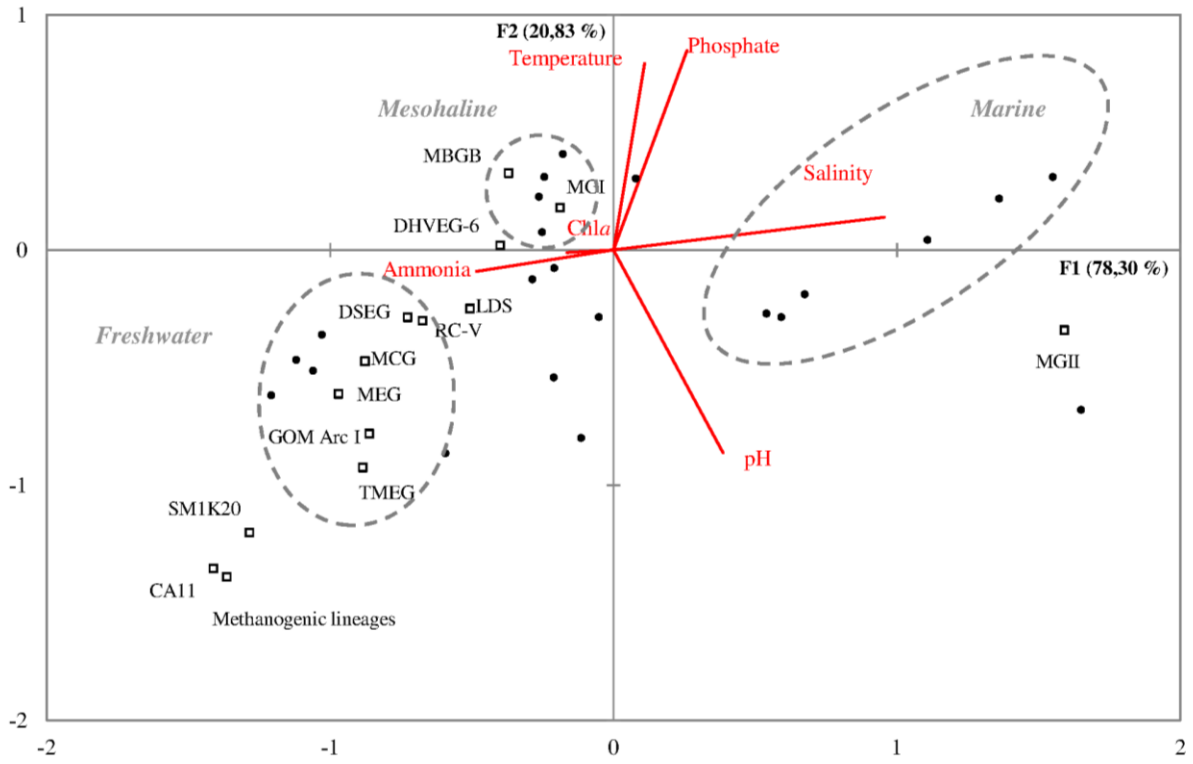
760

765

770

775

780



Supplementary Figure 2. Hugoni *et al.*

785

790

795

800

805

810

	Date	QC seq.	Archaea affiliated sequences	Thaumarchaeota affiliated sequences	Temp. (°C)	Sal. (PSU)	pH	Chl a (µg.L ⁻¹)	NH ₄ ⁺ (mg.L ⁻¹)	PO ₄ ³⁻ (mg.L ⁻¹)
		16SrRNA								
Freshwater	14/04/2011	ND	ND	ND	16.9	0	8.65	3.618	0.113	0.008
	13/05/2011	ND	ND	ND	20.7	0	8.39	6.686	0.030	0.018
	15/06/2011	2966	177	147	21.7	0	8.28	28.48	0.081	0.008
	13/07/2011	4163	52	0	23.7	0	8.04	5.658	0.143	0.082
	26/08/2011	1613	20	0	23.5	0	8.18	63.665	0.036	0.111
	09/09/2011	3351	116	90	21.7	0	8.13	56.069	0.049	0.021
	10/10/2011	2057	212	158	18.3	0	8.22	33.94	0.065	0.056
	08/11/2011	3055	1616	1375	13.8	0	8.14	2.031	0.078	0.034
	08/12/2011	4909	394	229	11.5	0	8.21	0.691	0.122	0.014
	06/01/2012	5171	592	118	10.5	0	8.14	1.57	0.068	0.024
20/02/2012	4501	946	41	7.2	0	8.1	7.089	0.081	0.011	
19/03/2012	306	35	0	12.1	0	ND	1.751	0.108	0.069	
Mesohaline	14/04/2011	ND	ND	ND	15.4	14.3	8.48	5.264	0.0	0.011
	13/05/2011	ND	ND	ND	19.4	14.7	8.5	3.296	0.011	0.011
	15/06/2011	734	356	318	21	14.5	7.91	3.873	0.317	0.043
	13/07/2011	16263	7229	6833	22.1	15.4	7.78	5.054	0.043	0.114
	26/08/2011	1610	797	699	22.8	14.7	7.89	9.805	0.064	0.079
	09/09/2011	ND	ND	ND	21.1	14.3	7.58	4.276	0.0	0.069
	10/10/2011	4136	2798	2607	18	14.7	7.79	4.669	0.032	0.085
	08/11/2011	1169	724	645	13.7	14.3	7.9	2.736	0.033	0.056
	08/12/2011	1198	808	759	11.9	14.6	7.98	1.383	0.0	0.056
	06/01/2012	5042	3418	3041	10.2	15.7	8.12	0.661	0.05	0.03
20/02/2012	ND	ND	ND	5.9	14.7	7.91	1.895	0.058	0.03	
19/03/2012	4784	1878	1478	10.4	15.2	7.87	9.28	0.020	0.056	
Marine	14/04/2011	2313	1688	415	13.7	33.2	8.58	0.898	0.0	0.056
	15/06/2011	3298	1632	166	18.7	34.3	8.03	2.908	0.0	0.091
	13/07/2011	1909	586	97	21	35	8.03	5.078	0.0	0.088
	26/08/2011	ND	ND	ND	21.8	34.2	8.23	4.48	0.0	0.095
	09/09/2011	ND	ND	ND	20.7	35	8.07	1.946	0.0	0.062
	10/10/2011	ND	ND	ND	18.3	35.3	7.99	2.912	0.0	0.072
	08/11/2011	ND	ND	ND	14.5	34.8	8.03	1.312	0.0	0.261
	08/12/2011	429	337	310	12.6	33.6	8.02	0.803	0.0	0.072
	06/01/2012	1059	708	646	10.5	28.3	8.1	0.939	0.0599	0.075
20/02/2012	914	334	219	6	32.8	7.95	1.419	0.071	0.082	
19/03/2012	1179	350	43	9.5	33.7	7.9	7.5	0.082	0.098	

815

Supplementary Table 1. Hugoni *et al.*

820

825

830

Station	MGI Subcluster	Representative OTU	Average number of sequences		
			Apr-Aug	Sep-Nov	Dec-Mar
Freshwater station	Marine A	D32_HUJB0N002IFCRR	0	14	0
		R34_HUJB0N002JELSP	17	60	24
	Freshwater A	R16_HUJB0N002GU20W	16	43	10
		R24_HUJB0N002JCR91	5	39	8
		R8_HTRM39R02I8CB5	1	20	1
	Freshwater B	R24_HUJB0N002HQ6B7	10	20	3
		R16_HUJB0N002HSI5K	7	20	3
		R8_HTRM39R02IN9W4	0	15	2
	Sediment	R16_HUJB0N002JEY7S	19	44	9
		R10_HUJB0N002JLORV	6	20	5
R7_HTRM39R02F36EW		5	20	3	
Mesohaline station	Marine A.c	R22_HTRM39R02HVYCX	49	66	398
		D32_HUJB0N002F6TFA	5	19	303
		D32_HUJB0N002I2ZLT	1	6	84
	Marine A.b	R16_HUJB0N002H3P4B	323	101	47
		R19_HUJB0N002JY578	52	18	9
		R17_HTRM39R02HMXG2	59	16	3
		R16_HUJB0N002ITPEH	175	73	24
		R16_HUJB0N002ICU9P	87	34	8
		Marine A.a	D32_HUJB0N002IFCRR	129	131
	R17_HTRM39R02HNRQI		26	115	3
	Sediment	R16_HUJB0N002JEY7S	181	71	31
		R10_HUJB0N002JLORV	48	17	11
	Freshwater A	R24_HUJB0N002JCR91	48	24	18
		R16_HUJB0N002GU20W	115	43	50
		R34_HUJB0N002JELSP	199	84	78
Freshwater B		R24_HUJB0N002HQ6B7	81	38	47
	R16_HUJB0N002HSI5K	47	19	29	
Marine station	Marine A	D32_HUJB0N002F6TFA	34	ND	88
		R22_HTRM39R02HVYCX	47	ND	75
		D32_HUJB0N002I2ZLT	12	ND	18
		D32_HUJB0N002IFCRR	26	ND	12
		R16_HUJB0N002H3P4B	12	ND	7
		R25_HTRM39R02GJ5BA	10	ND	8

Supplementary Table 2. Hugoni *et al.*

835

840

MGI Subcluster	14-Apr	15-Jun	13-Jul	26-Aug	9-Sep	10-Oct	8-Nov	8-Dec	6-Jan	20-Feb	19-Mar
Marine A	ND	0	ND	ND	0	1 (1)	1 (42)	1 (1)	0	0	ND
Freshwater A	ND	4 (39)	ND	ND	4 (21)	4 (57)	4 (405)	4 (75)	4 (37)	3 (17)	ND
Freshwater B	ND	3 (17)	ND	ND	2 (15)	2 (9)	3 (140)	3 (16)	3 (8)	0	ND
Sediment	ND	3 (30)	ND	ND	3 (15)	3 (29)	3 (209)	3 (28)	3 (18)	2 (4)	ND
Marine A	ND	8 (140)	10 (2243)	10 (334)	ND	10 (894)	10 (258)	10 (516)	10 (2166)	ND	8 (269)
Freshwater A	ND	3 (35)	3 (977)	3 (75)	ND	3 (225)	3 (74)	3 (24)	3 (64)	ND	3 (349)
Freshwater B	ND	2(22)	2 (322)	2 (40)	ND	2 (95)	2 (18)	2 (3)	2 (8)	ND	2 (217)
Sediment	ND	2 (25)	2 (630)	2 (33)	ND	2 (135)	2 (39)	2 (19)	2 (37)	ND	2 (70)
Marine A	6 (307)	6 (78)	ND	ND	ND	ND	ND	6 (221)	6 (480)	6 (116)	1 (12)
Freshwater A	0	0	ND	ND	ND	ND	ND	0	0	0	0
Freshwater B	0	0	ND	ND	ND	ND	ND	0	0	0	0
Sediment	0	0	ND	ND	ND	ND	ND	0	0	0	0

845

Supplementary Table 3. Hugoni *et al.*