



HAL
open science

Emergence of the Coastal Urban Region of Klaipeda (Lithuania)

Jelena Galiniene, Daiva Verkuleviciute-Kriukiene, Sébastien Gadal

► **To cite this version:**

Jelena Galiniene, Daiva Verkuleviciute-Kriukiene, Sébastien Gadal. Emergence of the Coastal Urban Region of Klaipeda (Lithuania). 1st Conference: Baltic Earth: Earth System Science for the Baltic Sea Region, Jun 2016, Nida, Lithuania. , 2016, 10.13140/RG.2.1.1123.9920 . hal-01348470

HAL Id: hal-01348470

<https://hal.science/hal-01348470>

Submitted on 24 Jul 2016

HAL is a multi-disciplinary open access archive for the deposit and dissemination of scientific research documents, whether they are published or not. The documents may come from teaching and research institutions in France or abroad, or from public or private research centers.

L'archive ouverte pluridisciplinaire **HAL**, est destinée au dépôt et à la diffusion de documents scientifiques de niveau recherche, publiés ou non, émanant des établissements d'enseignement et de recherche français ou étrangers, des laboratoires publics ou privés.

EMERGENCE OF THE COASTAL URBAN REGION OF KLAIPEDA (LITHUANIA)

Jelena Galiniene^{1,2}, Daiva Verkuleviciute-Kriukiene¹ and Sébastien Gadal²

¹ Klaipėda University, Address: 84, H. Manto, LT-93185, Klaipėda, Lithuania

² Aix-Marseille Université, CNRS ESPACE UMR 7300

Introduction

Coastal zones are among those areas that have been subject to intense human pressure due to their natural resources. As a transitional zone, between land and sea, coastal zone holds some of the most valuable and productive habitats on earth. Huge amount of energy circulate in these zones, which attracts all sort of human interest and activities (Rivis et al., 2016; Schlacher et al., 2014; Bicknell et al., Sperr et al., 2006). A great number of population lives near the coastal zone.

Direct and indirect degradation of coastal zone and waters has been reducing natural productivity, as well as mutilating environmental functions that human being using. Due to chaotic coastal zones occupation and their unsustainable patterns of uses, it will lead to resources exhaustion (Sperr et al., 2006).

Landscapes have been shaped over the centuries by processes related to human land use, which are reflected in regional landscape patterns (Juskevicius et al., 2013; Renetzeder et al., 2009). It is important to gain a better understanding of the nature and magnitude of urban climate modification, in order to assess the contribution of urban areas to climate change and also what impact climate change may have on urban areas (Hughes, 2006).

The goal of this study is to analyze the impact of urban sprawl on landscape around Klaipėda, Lithuania (Fig. 1). The main aims are: (I) find differences in location of settlements during period since 2005 to 2013; (II) predict possible settlements expansion till 2020; (III) evaluate possible urban sprawl impact on Klaipėda city and suburbs.

Study area and methods

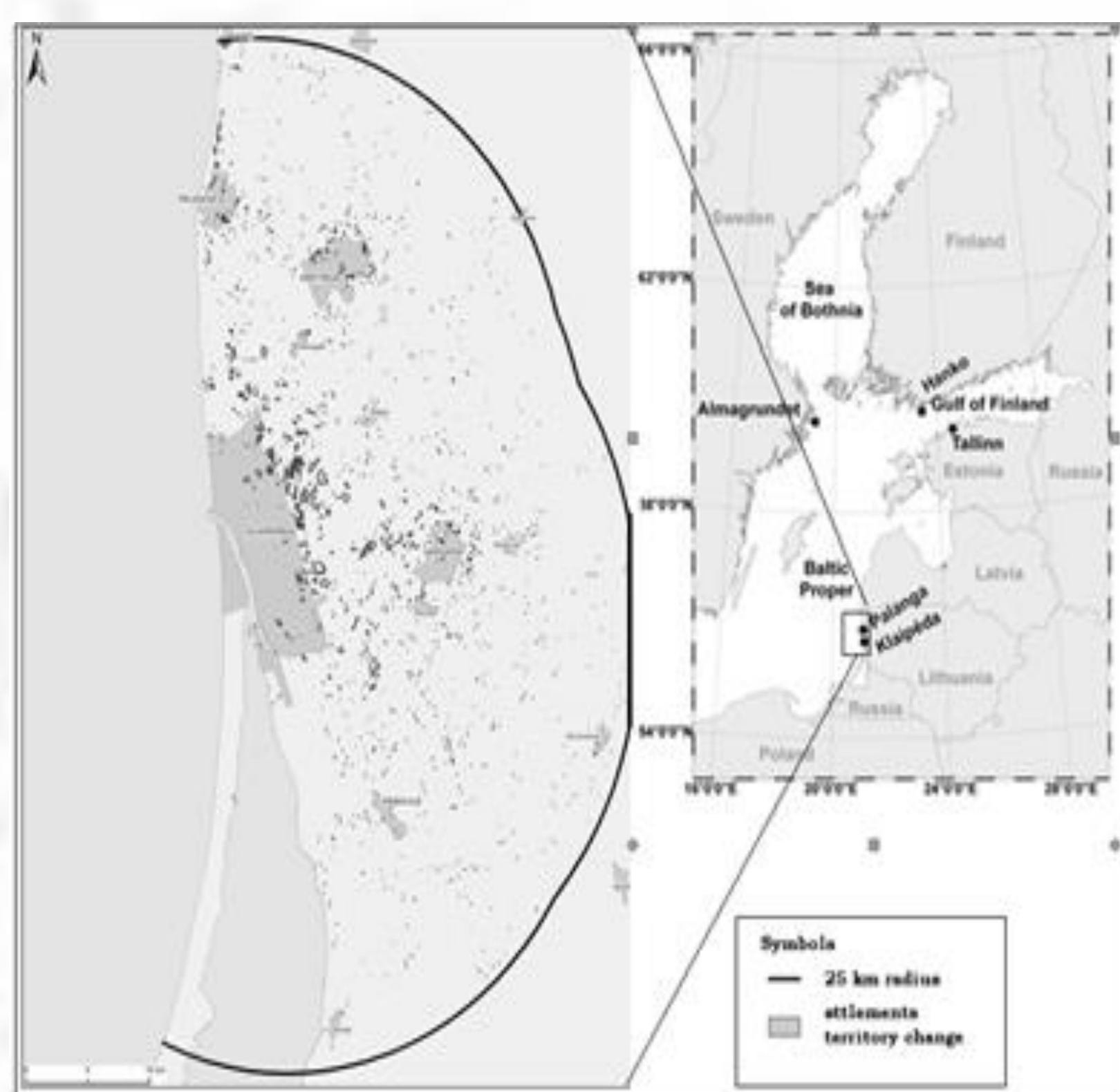


Fig.1. Settlements expansion 2005-2013 in study area.

Baltic Sea and coast is one of the most vital natural resources of Lithuania. Only a small part of Baltic Sea coast belongs to Lithuania (~91 km.). On the Baltic Sea coast situated Klaipėda city is the largest town at the western Lithuania, with the number of 158 541 population (2013 Census data). Here is located one of the non-freezing harbors at the south-eastern part of Baltic Sea. In Klaipėda surrounding settlements is located several tourist recreation attraction points, and summer resorts, such as well-known Palanga and Nida, Marine museum with the only one dolphinarium in all Baltic countries and many others.

At the same time almost 0,5% of Klaipėda city territory and 48% of Klaipėda district territory belongs to the National park area and Natura 2000 or other prohibited area (State Cadastre of Protected Areas, 2014). As notes Darijus Veteikis (2011) very short line of coast (almost 91 km) belongs to Lithuania, but despite this, more when a half of it (51 km) is under various restrictions. Despite this, in this area has been concentrated various economic and social activities which forcing together to share the area with natural landscapes of great value (Veteikis et al., 2011).

In study area was included territories in 25 km radius from Klaipėda city according to D.Cesnavicius (1998) and M.Cirtautas (2013) methodology. Regarding this methodology, in study area were included Klaipėda city, part of Klaipėda district, part of Kretinga district, Palanga city, Neringa and part of Silute district, municipalities (fig. 1).

In order to get the most accurate data on suburbanization processes, was gathered several methods: GIS, using orthophoto and georeferential GDB10LT databases and also mathematical – statistical method in comparison with received visual results. GIS methods were used to identify changes in the land cover change in Klaipėda and its surroundings. Both – macro (city level) and micro level (suburbs) changes were investigated during research.

In this study, was used year 2005 and 2013 layers of Lithuanian territory M 1:10 000 georeferential database year 2005 and 2013 and the 2005 and 2010 Lithuanian territory digital orthophoto M 1:10 000 map ORT10LT (Fig.1). Orthophoto's map layers were used to make geometrical correction of georeferential GDB10LT database layers in order to look for settlements territorial change during analyzed period.

Results

Study shows, what the biggest suburbanization processes in Klaipėda have been spotted in 5-10 km eastwards and not significantly in south – east and northern direction from the city (Fig. 2;3;5). Territory in 5 km distance from Klaipėda city centre have increased by 632,65 ha, as well as in all studied area enlarged by 1090,94 ha. The most significant suburbanization processes have been in settlements of Klaipėda district: Slengiai, Triušėliai, Budrikai, Mazuriškiai. Here was recorded by 56,63% of all changes in Klaipėda district.



Fig.2. Urban sprawl in Klaipėda district 2005-2013, ha.

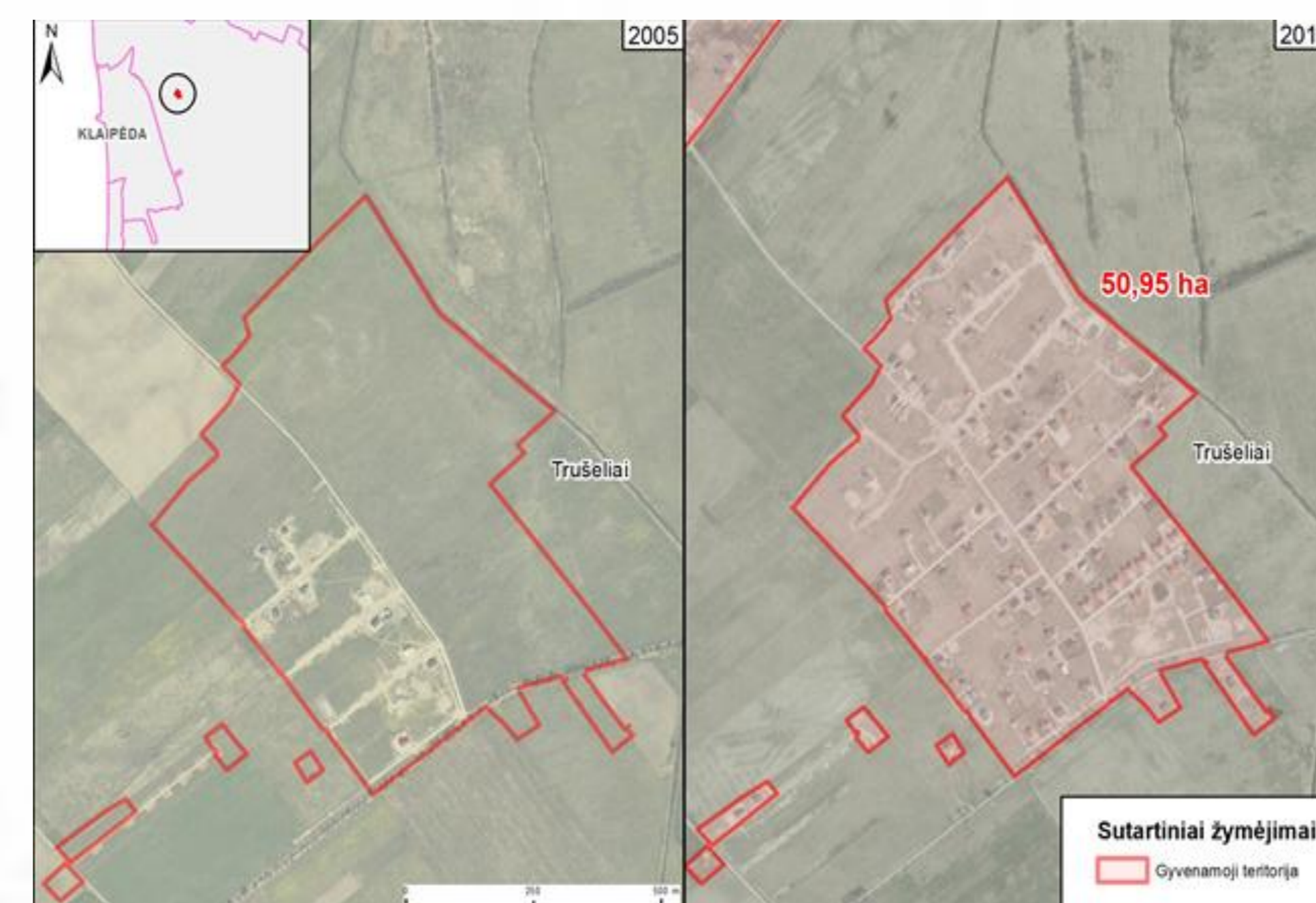


Fig.3 The biggest territorial change (Trušėlių km.) 2005-2010, ha.

One of the best indicator, showing urban sprawl and change of physical landscape is the change of number of population in city and suburban areas (Cirtautas 2015, Newman et al. 2014; Europos Sąjungos regioninė politika 2007). Correlation shows, what population number in Klaipėda city is decreasing but in Klaipėda district increases exponentially ($r = -0,8613$) (fig. 4).

According georeferential data analysis, settlements territory of Klaipėda city suburbs expanded by 1090,94 ha during by 2005-2013. Mostly, suburbs have expanded eastwards and northern in 5 km distance from Klaipėda city (632,65 ha) that is directions parallel to the highway Klaipėda-Vilnius, and on the way to Palanga resort.

If territorial growth of settlements around Klaipėda city will be the same as during 2005-2013 period, settlements around Klaipėda city in 5 km radius, would expand up to 1245,77 ha till year 2020. Future urban sprawl direction should remain the same – eastwards and northern from Klaipėda city.

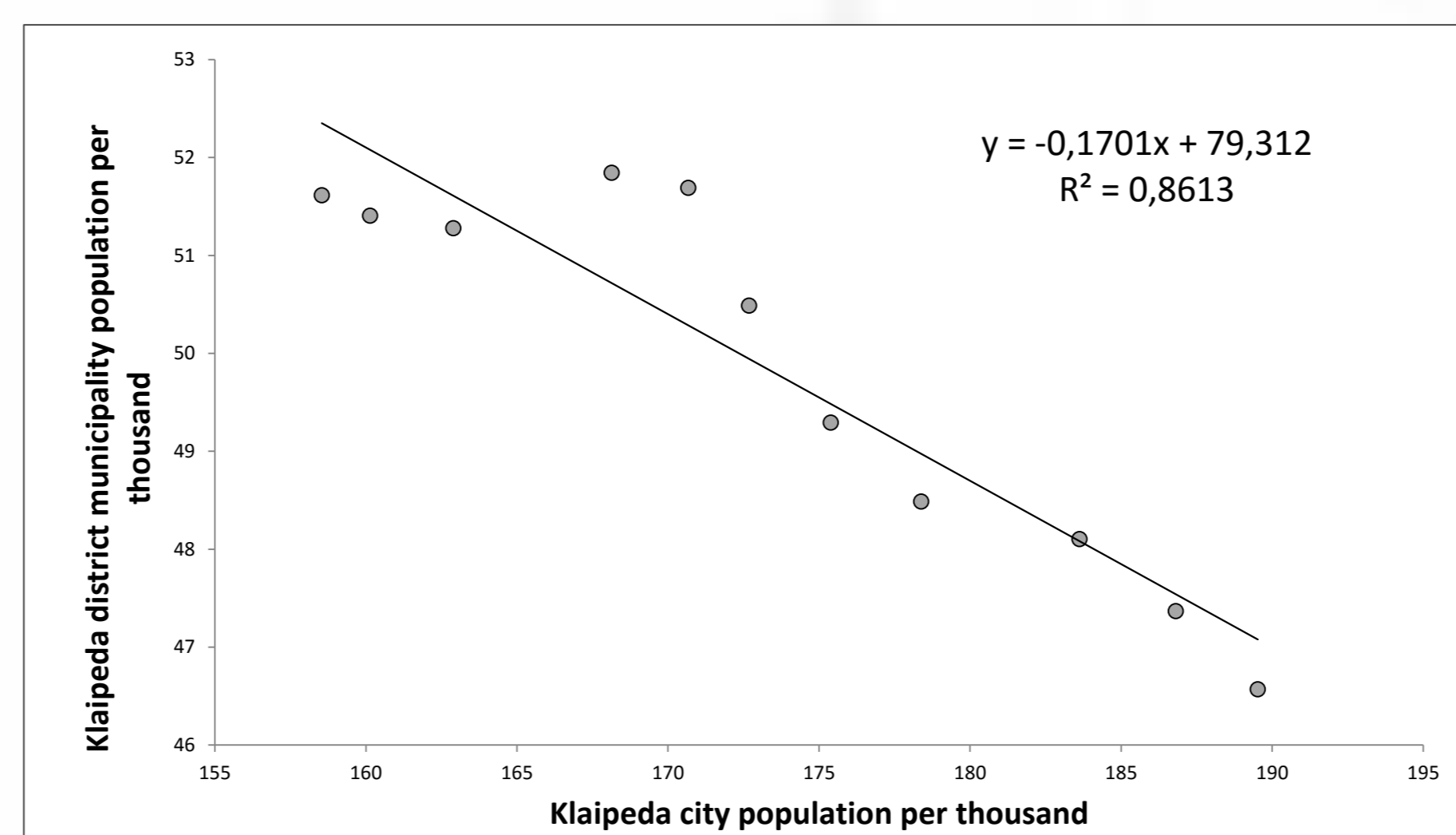


Fig.4. Correlation between Klaipėda city and Klaipėda district municipality population, per thousand. Source: Lithuanian Statistical Department, 2013. N=11; $r = -0,8613$, $p < 0,005$, $\alpha = 0,05$.

Conclusions

- Study shows, what the biggest suburbanization processes in Klaipėda have been spotted in 5-10 km eastwards and not significantly in south – east and northern direction from the city (Fig. 5). Territory in 5 km distance from Klaipėda city centre have increased by 632,65 ha, as well as in all studied area enlarged by 1090,94 ha. The most significant suburbanization processes have been in settlements of Klaipėda district: Slengiai, Triušėliai, Budrikai, Mazuriškiai. Here was recorded by 56,63% of all changes in Klaipėda district.
- One of the best indicator, showing urban sprawl and change of physical landscape is the change of number of population in city and suburban areas (Cirtautas 2015, Newman et al. 2014; Europos Sąjungos regioninė politika 2007). Correlation shows, what population number in Klaipėda city is decreasing but in Klaipėda district increases exponentially ($r = -0,8613$).
- According georeferential data analysis, settlements territory of Klaipėda city suburbs expanded by 1090,94 ha during by 2005-2013. Mostly, suburbs have expanded eastwards and northern in 5 km distance from Klaipėda city (632,65 ha) that is directions parallel to the highway Klaipėda-Vilnius, and on the way to Palanga resort.
- If territorial growth of settlements around Klaipėda city will be the same as during 2005-2013 period, settlements around Klaipėda city in 5 km radius, would expand up to 1245,77 ha till year 2020. Future urban sprawl direction should remain the same – eastwards and northern from Klaipėda city.

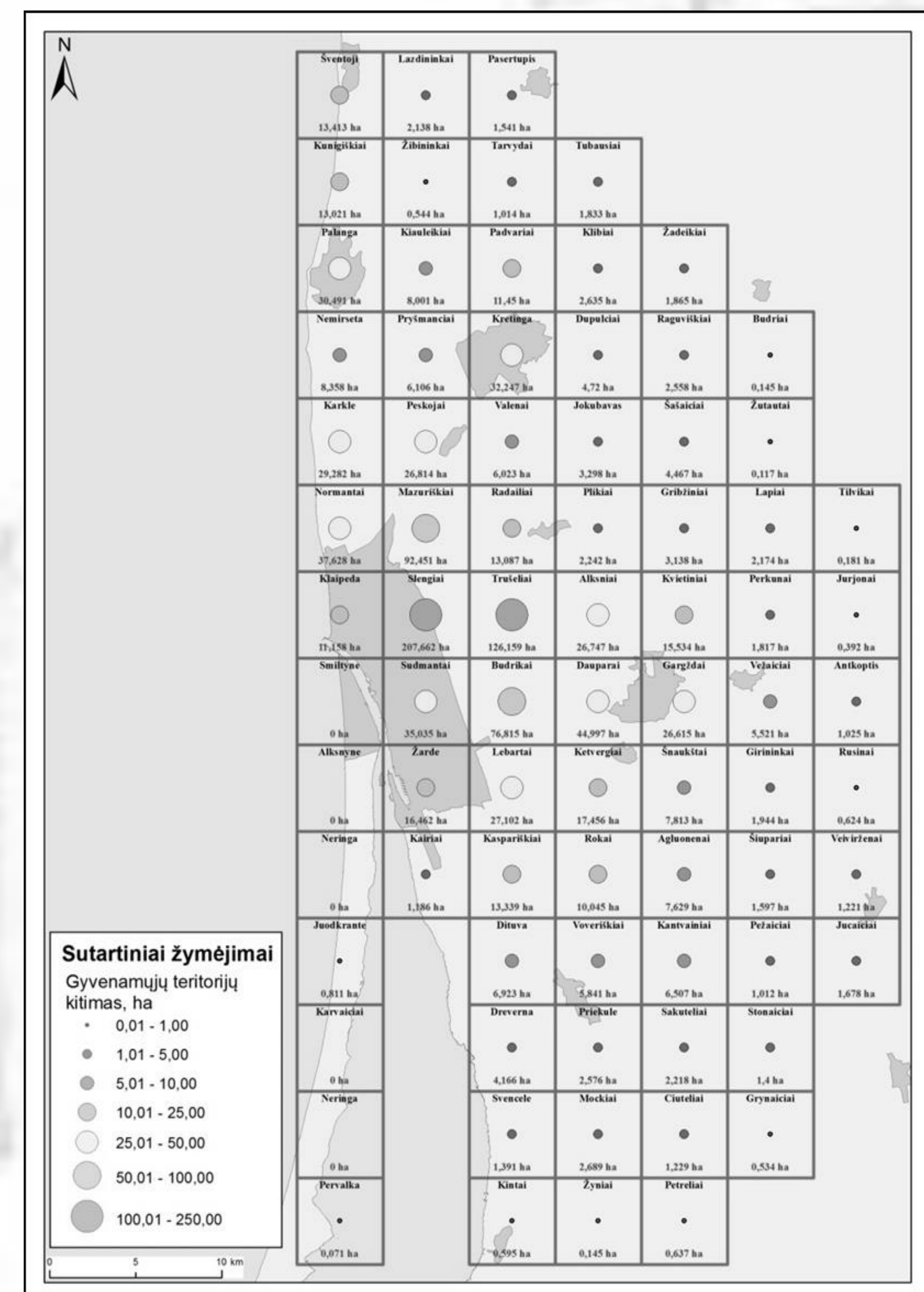


Fig.5. Settlements territorial change after digitalization (a) and change in ha (b) during period of 2005-2013.

References

- Brand, C., Preston, J.M., 2009. '60-20 emission'—The unequal distribution of greenhouse gas emissions from personal, non-business travel in the UK. *Transport policy*, 17 (2010) 9-19.
- Bouwman, M.E., Voogd, H., 2005. Mobility and the Urban-Rural Continuum. *GBER*, vol. 4, No.3, pp.60-69.
- Cirtautas, M., 2014. Centralizuotai kaupiamų statistinių duomenų panaudojimas priemiesčių gyvenamųjų vietovių raidos tyrimuose. Kvalifikacinio mokslo darbo Nr. 367 ataskaita, Urbanistinės analizės mokslo laboratorija, VGTU, Vilnius.
- Cirtautas, M., 2013. Urban Sprawl of Major Cities in the Baltic States. *Architecture and Urban Planning*. Vilnius Gediminas Technical University, 2013/7, p.72-79.
- Cheng, J., Masser, I., Ottens, H., 2003. Understanding urban growth system: theories and methods. Department of Urban and Regional Planning and Geo-Information Management, International Institute for Geo-Information Science and Earth Observation (ITC), The Netherlands.
- Europos Sąjungos regioninė politika, 2007. *Augantys regionai, auganti Europa. Ketvirtoji ekonominės ir socialinės sanglaudos ataskaita*, 15-16.
- European Journal of Spatial Development 2012. Published by Nordregio, Nordic Centre for Spatial Development and OTB Research Institute, Delft University of Technology.
- Gadal, S., 2011 (a). The socio-ecological challenge of the metropolised territories: key-notes. University of Versailles Saint-Quentin-en-Yvelines.
- Gadal, S., 2011 (b). Urban multilevel geographical information satellite generation. University of Versailles Saint-Quentin-en-Yvelines.
- Galiniene, J., 2013. Klaipėda city demographical economical future model. Master thesis. University of Klaipėda.
- Jansen, J.O., Christensen, H.T., Gram-Hanssen, K., 2011. Sustainable urban development – compact cities or consumer practices? *Danish Journal of Geoinformatics and Land Management*, Vol. 46(2011), No.1, pp.50-64.
- Newman, M., 2005. The compact city Fallacy. *Journal of Planning Education and Research* 25:11-26.
- Newman, L., Nixon, D., 2014. Farming in an Agriurban Ecovillage Development: An Approach to Limiting Agricultural/Residential Conflict. *Sage Open*, October-December 2014: 1–10.
- Poom, A., Ahas, R., Orru, K., 2014. The impact of residential location and settlement hierarchy on ecological footprint. *Environment and Planning A*, volume 46, pp. 2369-2384.
- Shatu, F.M., Kamruzzaman, Md., Deilami, K. 2014. Did Brisbane grow smartly? Drivers of city growth 1991-2001 and lessons for current policies. *Sage Open*, 2014: 1-19.
- Sudhira, H.S., Ramachandra, T.V., Jagadish, K.S., 2004. Urban sprawl: metrics, dynamics and modelling using GIS. *International Journal of Applied Earth Observation and Geoinformation*, Volume 5 (1), 29-39.
- Zaleckis, K., Kamičaitytė-Virbašienė, J., 2010. Darnus urbanistinių struktūrų vystymasis: Kauno miesto atvejis. *Kauno technologijos universitetas*.
- Zhong, C., Huang, X., Arisona, S.M., Schmitt, G., Batty, M. 2014 (a). Inferring building functions from probabilistic model using public transportation data. *Computers, Environment and Urban Systems* 48 (2014) 124-137.
- Zhong, C., Huang, X., Arisona, S.M., Schmitt, G., Batty, M. 2014 (b). Detecting the dynamics of urban structure through spatial network analysis. *International Journal of Geographical Information Science*, Taylor & Francis.
- Žaromskis, R., 2001. Skirtingos žmonių veiklos poveikis pietryčių Baltijos krantų raidai. *Geografinis metraštis*, Vilnius, 34 (1), 59-72.
- Wang, Y., Hayashi, Y., Chen, J., Li, Q., 2014. Changing urban form and transport CO2 emissions: an empirical analysis of Beijing, China. *Sustainability* 2014, 6, 4558-4579.
- Кавалюкас, П., 1984. Проблема комплексной оценки антропологического потенциала территории. *Geographia Lituanica*, Vilnius, XXI, 180-190.