



**HAL**  
open science

## 3D printing of gas jet nozzles for laser-plasma accelerators

Andreas Döpp, Emilien Guillaume, Cédric Thauray, Julien Gautier, Kim Ta Phuoc, Victor Malka

► **To cite this version:**

Andreas Döpp, Emilien Guillaume, Cédric Thauray, Julien Gautier, Kim Ta Phuoc, et al.. 3D printing of gas jet nozzles for laser-plasma accelerators. *Review of Scientific Instruments*, 2016, 21 (3), pp.250 - 261. 10.1063/1.4958649 . hal-01347352

**HAL Id: hal-01347352**

**<https://hal.science/hal-01347352>**

Submitted on 6 Nov 2019

**HAL** is a multi-disciplinary open access archive for the deposit and dissemination of scientific research documents, whether they are published or not. The documents may come from teaching and research institutions in France or abroad, or from public or private research centers.

L'archive ouverte pluridisciplinaire **HAL**, est destinée au dépôt et à la diffusion de documents scientifiques de niveau recherche, publiés ou non, émanant des établissements d'enseignement et de recherche français ou étrangers, des laboratoires publics ou privés.

## 3D printing of gas jet nozzles for laser-plasma accelerators

A. Döpp, E. Guillaume, C. Thaury, J. Gautier, K. Ta Phuoc, and V. Malka

Citation: [Review of Scientific Instruments](#) **87**, 073505 (2016); doi: 10.1063/1.4958649

View online: <http://dx.doi.org/10.1063/1.4958649>

View Table of Contents: <http://aip.scitation.org/toc/rsi/87/7>

Published by the [American Institute of Physics](#)

---

### Articles you may be interested in

[High density gas jet nozzle design for laser target production](#)

[Review of Scientific Instruments](#) **72**, 2961 (2001); 10.1063/1.1380393

[Supersonic gas jets for laser-plasma experiments](#)

[Review of Scientific Instruments](#) **83**, 053304 (2012); 10.1063/1.4719915

[Note: Real-time monitoring via second-harmonic interferometry of a flow gas cell for laser wakefield acceleration](#)

[Review of Scientific Instruments](#) **87**, 086103 (2016); 10.1063/1.4960399

[Generation of 20 kA electron beam from a laser wakefield accelerator](#)

[Physics of Plasmas](#) **24**, 023108 (2017); 10.1063/1.4975613

[A nonlinear theory for multidimensional relativistic plasma wave wakefields](#)

[Physics of Plasmas](#) **13**, 056709 (2006); 10.1063/1.2203364

[Development and characterization of very dense submillimetric gas jets for laser-plasma interaction](#)

[Review of Scientific Instruments](#) **83**, 033507 (2012); 10.1063/1.3697859

---



## 3D printing of gas jet nozzles for laser-plasma accelerators

A. Döpp, E. Guillaume, C. Thaury, J. Gautier, K. Ta Phuoc, and V. Malka

LOA, ENSTA ParisTech, CNRS, École Polytechnique, Université Paris-Saclay, 828 Boulevard des Maréchaux, 91762 Palaiseau Cedex, France

(Received 5 May 2016; accepted 29 June 2016; published online 20 July 2016)

Recent results on laser wakefield acceleration in tailored plasma channels have underlined the importance of controlling the density profile of the gas target. In particular, it was reported that the appropriate density tailoring can result in improved injection, acceleration, and collimation of laser-accelerated electron beams. To achieve such profiles, innovative target designs are required. For this purpose, we have reviewed the usage of additive layer manufacturing, commonly known as 3D printing, in order to produce gas jet nozzles. Notably we have compared the performance of two industry standard techniques, namely, selective laser sintering (SLS) and stereolithography (SLA). Furthermore we have used the common fused deposition modeling to reproduce basic gas jet designs and used SLA and SLS for more sophisticated nozzle designs. The nozzles are characterized interferometrically and used for electron acceleration experiments with the SALLE JAUNE terawatt laser at Laboratoire d'Optique Appliquée. *Published by AIP Publishing.* [<http://dx.doi.org/10.1063/1.4958649>]

### I. INTRODUCTION

Particle accelerators are an essential tool in science, industry, and medicine. While a century of R&D has led to a high level of control and stability, field emission and subsequent vacuum breakdown still limit the maximum field gradients to around 100 MV/m.<sup>1</sup> This bottleneck prevents high energy accelerators from becoming more compact and affordable. Plasma-based accelerators overcome these limitations by use of a pre-ionized medium and can thus reach higher acceleration gradients, in excess of 100 GV/m.<sup>2</sup> In particular, it was observed that electrons can be accelerated to highly relativistic energies in the wake of an intense laser pulse propagating through a plasma.<sup>3</sup> Moreover, it has been demonstrated that the kinetic energy of these electron beams can be converted on a millimeter scale into energetic photon beams using, e.g., bremsstrahlung conversion,<sup>4,5</sup> magnetic undulators,<sup>6</sup> inverse Compton backscattering,<sup>7,8</sup> or betatron emission from plasma wigglers.<sup>9</sup>

The density profile of the plasma target plays a crucial role for the operation of a laser-wakefield accelerator. In particular, many recent innovations were achieved by means of target engineering. For instance, it has been shown that longitudinal density tailoring can be used to localize electron injection,<sup>10,11</sup> increase the beam energy,<sup>12</sup> and reduce the beam energy spread<sup>13</sup> and the beam divergence.<sup>14</sup> Target engineering is therefore very important for the advance of the research field. However, there are a number of problems with the current target manufacturing technology. One is that the targets become more and more complex and the traditional manufacturing techniques are brought to their limits. Also, most high-intensity lasers are located at user facilities and laser-plasma acceleration experiments have a typical duration of a few weeks. With conventional production chains, it is therefore often impossible to innovate targets during a campaign. As an alternative, we have investigated the usage of 3D printers for gas jet manufacturing.

The paper is structured as follows: First, we give an overview of gas targets for laser wakefield acceleration and the most common 3D printing technologies. Then we present results using different techniques and compare their performance. Last, we discuss how 3D printed nozzles perform in experiments on laser-driven electron acceleration and what are the merits of the technology in this special field of applications.

### II. GAS JET TARGETS FOR LASER-PLASMA ACCELERATORS

Laser wakefield accelerators rely on a plasma to act as both electron injector and accelerator.<sup>2</sup> This plasma is created via ionization of a gas target and in order to permit a laser pulse to propagate, the electron density  $n_e$  has to be below the critical density  $n_c \approx 1.7 \times 10^{21} \times (\lambda_0[\mu\text{m}])^{-2}$ . During propagation through the plasma, the ponderomotive force of the laser pulse excites a plasma wave in its wake that serves as accelerating structure. However, as the laser propagates in an underdense plasma at a group velocity  $v_g \approx (1 - n_e/2n_c)c_0$ , the laser driver and the electrons (with a velocity close to the speed of light in vacuum  $v_e \approx c_0$ ) slowly move with respect to each other. Once the electrons have reached a decelerating region of the plasma wave, they are “dephased” and start losing energy. In a flat density profile, the resulting dephasing length  $L_d \propto n_e^{-3/2}$  then defines the maximum attainable beam energy, leading to an approximate scaling  $E_{\text{max}} \propto n_e^{-1}$ , see Ref. 2. As operation beyond dephasing is inefficient, the accelerator length is usually optimized around the dephasing length. This relation is illustrated in Fig. 1, which shows a collection of experimental data from Ref. 15, with the scalings of beam energy and matched plasma density. While longer, low-density targets are adequate to produce beams of highest energy, high density targets can be of interest to produce beams with high charge. Here the reduced group velocity of the laser

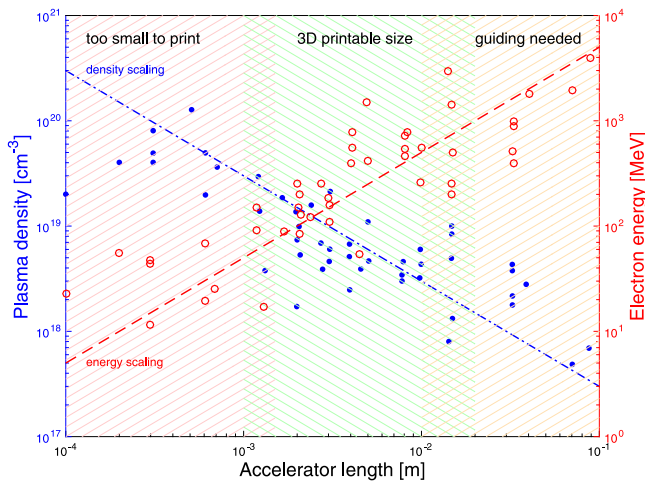


FIG. 1. Scalings of dephasing-limited laser-plasma accelerators. As discussed in Ref. 2, higher beam energies can be reached at reduced plasma density, which in turn requires longer acceleration length due to the reduced wakefield amplitude. The lines show the basic scalings, which agree well with the marked data from various experiments on laser wakefield acceleration.<sup>15</sup> As we will discuss in this paper, structures smaller than a millimeter can currently not be produced using common 3D printers. The technology is ideal for nozzle sizes in the range between 2 - 10 mm. Above this, capillary targets may be the better choice due to their additional guiding capabilities.

can facilitate self-injection of electrons into the accelerator.<sup>16</sup> Furthermore, the accelerator length is limited by depletion of the driving laser pulse. As a result, terawatt-class facilities often use jets of a few millimeters length, while petawatt-class lasers employ centimeter-scale targets.

Several different types of such targets have been developed and the most common designs are discharge and dielectric capillaries, gas cells, and gas jets. The first three types have a similar layout, where the laser is focused into a tube with a diameter in the order of 100  $\mu\text{m}$ . Note that careful alignment of the laser beam is imperative since even a slight misalignment can damage or destroy the target. Discharge targets provide a preformed plasma with a transverse density gradient that can provide auxiliary guiding of the laser pulse.<sup>17</sup> The discharge-based accelerator can therefore be operated at lower plasma density than self-guided laser-plasma accelerators (where the laser creates a focusing density gradient) and is often chosen for high energy experiments.<sup>18,19</sup> However, during our studies in the past, the complexity of the discharge target has led to stability issues. Dielectric capillary tubes work as waveguides and therefore provide additional guiding of outer Airy laser modes.<sup>20</sup> Gas cells have a similar design, but provide no additional guiding capabilities. Yet they offer certain advantages, e.g., some designs allow to easily vary the acceleration length.<sup>21</sup> In both cases, the gas is supplied from a reservoir of some hundred millibar backing pressure and the gas density is constant inside the target, with entrance and exit gradients of the order of their diameter.<sup>22</sup>

Gas jets are different from the above layouts as the laser is focused onto a gas that flows freely into the vacuum chamber. A gas jet primarily consists of a high-pressure gas valve and an individually designed exit nozzle. Many laboratories rely on Series 9 pulse valves by Parker Hannifin Corp., which operate at up to 50-80 bars and a sub-millisecond reaction time. Onto

the valve exit different nozzles can be mounted. These nozzles are produced usually using computerized numerical control (CNC) milling in aluminum, with most designs relying on a conical De Laval layout that leads to a supersonic gas flow downstream.<sup>23,24</sup> The nozzles have usually exit diameters of a few millimeters, but also nozzles of more than a centimeter diameter have been used for GeV electron acceleration.<sup>25</sup> A very particular type gas jet nozzle has been developed for laser-driven proton acceleration. Here near-critical plasma densities are reached, which requires operation at very high pressure (>100 bars) and small exit diameters (<1 mm).<sup>26</sup>

There are a number of reasons why gas jets have been the most common type of gas target used for laser wakefield acceleration during the past decade. First, their open geometry makes them much simpler to align and offers good accessibility for diagnostics, which is interesting for prototyping and proof-of-concept setups. But furthermore their superior stability and durability makes them a frequent choice for permanent setups. Note that gas cells have a similar performance. Indeed, De Laval nozzles with a circular exit are more suitable for short acceleration length (some millimeters), because otherwise a large proportion of gas is released without use into the vacuum chamber. Last, the longitudinal density profile in gas jets can be tailored to an extent that has not yet been demonstrated with other targets. For example, the gas flow from a single nozzle can be manipulated with a blade to create sharp transitions<sup>10,13</sup> or the flow of multiple exit nozzles can be combined to create density ramps in the profile.<sup>27</sup>

### III. ADDITIVE MANUFACTURING TECHNOLOGIES (3D PRINTING)

What is commonly called 3D printing<sup>28</sup> is a number of different technologies for additive layer manufacturing.<sup>29-31</sup> These technologies have been essentially developed since the 1980s and have recently drawn a lot of public attention.<sup>32</sup> While many applications, e.g., in engineering, biotechnology, and chemistry have been considered,<sup>33</sup> the technology still faces many challenges and each novel application has to be carefully reviewed.<sup>34</sup>

There are a number of motivations for the usage of 3D printers. First, pieces can be produced directly from a CAD drawing,<sup>28</sup> which make it ideal for rapid prototyping. The time from finishing a 3D model to using it ranges from a few hours (if an in-house printer is available) to a few days (for outsourced production). Furthermore the field is rapidly evolving and recently a number of enterprises offer manufacturing at very competitive prices (usually much cheaper than milling). These advantages hold especially for small, individual pieces such as gas jet nozzles. Note that the technology is not competitive in case of larger pieces and batch production.<sup>31</sup> Last, additive manufacturing can offer more freedom in the design than conventional milling does. However, in order for this argument to hold, we need to respect some guidelines, which we are going to discuss in this paper. As readers from the laser and accelerator communities may not be familiar with additive manufacturing, we will briefly introduce the most common consumer and commercial technologies (see also Fig. 2).

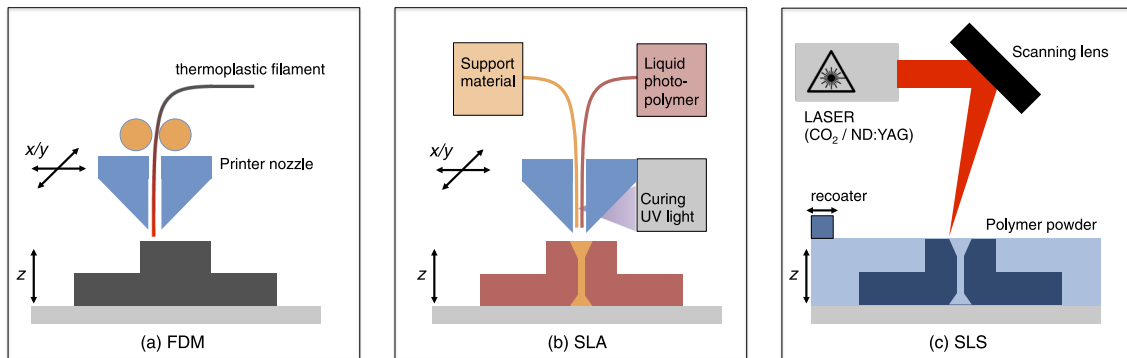


FIG. 2. Illustration of three different additive manufacturing techniques. (a) Fused deposition modeling, (b) PolyJet, a variation of stereolithography, and (c) selective laser sintering.

### A. Fused deposition modeling (FDM)

The basic concept of Fused deposition modeling (FDM)<sup>42</sup> is similar to a common hot glue gun: a thermoplastic filament is fed through a hot nozzle. Due to the heating, the filament melts and is extruded. When the material is “printed” onto the underlying layer of material, it cools down and solidifies. Due to their conceptual simplicity, FDM printers are used in most consumer printers (MakerBot, Printbot, etc.) as well as for free and open source hardware projects like RepRap or Fab@Home. Such printers are low-cost and easily affordable even for small laboratories and research groups. For our study we have used a commercial FDM printer (HP DesignJet 3D, now relabeled uPrint SE), which prints at a layer thickness of 0.25 mm.

### B. Stereolithography (SLA)

Stereolithography (SLA) is a technique used in many commercial printers, based on induced polymerization by light.<sup>35</sup> Here a liquid photopolymer (resin) is printed onto a surface and hardens when it is illuminated by a UV laser. In contrast to the FDM machines, most SLA printers have no moving head and instead the laser scans over the liquid polymer bath using a scanning mirror. Once the laser has scanned one entire layer, a leveling blade passes to smoothen the surface. Also SLA printers need to create a support structure that is removed after printing.

For this study, we have relied on PolyJet, a particular type of SLA, developed by Stratasys. Here the photopolymer is delivered in the form of droplets, which are immediately solidified by a UV light in the printer head. In principle, the resolution of the technique is limited by the droplet size and not by the laser spot size as conventional SLA. The Stratasys Objet30 Pro printer, which we used in this study, has a layer thickness of 28  $\mu\text{m}$  and an xy resolution of 42  $\mu\text{m}$ . In principle, this technique should lead to the highest resolution (see the discussion in Sec. IV).

### C. Selective laser sintering (SLS)

In selective laser sintering (SLS), a high power laser, typically a pulsed  $\text{CO}_2$  or ND:YAG laser, is focused on a

powder that is then locally fused via sintering.<sup>36</sup> The powder can be a metal compound or a polymer, e.g., nylon. Once a whole layer has been selectively sintered, the recoater applies a new layer of powder and the procedure repeats. A main difference to FDM and SLA is that SLS does not require any support structures as the un-sintered powder itself acts as support.

SLS systems are much more expensive than FDM and SLA systems as they require high power lasers for the sintering process. In this study, we used an EOS Formiga P110 printer, which uses a 30 W  $\text{CO}_2$  laser coupled to an F-theta scanning lens. The printer material is a PA 12 based fine polyamide (PA 2200) with an average grain size of 60  $\mu\text{m}$ . The layer thickness is 60–150  $\mu\text{m}$ .

## IV. 3D PRINTING FOR LASER-PLASMA ACCELERATORS

The use of 3D printing for laser wakefield accelerators has been pioneered at University of Michigan, where targets, especially gas cells, were produced using SLA.<sup>37</sup> The group presented very promising results, e.g., 100  $\mu\text{m}$  diameter nozzles.<sup>38</sup> However, these parts required post-processing of the nozzles because the narrowest part of the nozzle was blocked.

We have tested FDM, SLA, and SLS printers and experienced similar issues, even at diameters exceeding >500  $\mu\text{m}$ . When trying to address these issues with the commercial manufacturer, we were advised to avoid channels smaller than 2 mm. However, such basic guidelines are oriented to the wide public and usually differ substantially from the requirements for special application. This lack of specific documentation has also been acknowledged in the mechanical engineering community.<sup>39</sup>

During our first tests, we found that the quality of the printed pieces depends on the nozzle height, aperture, and the print direction. In order to evaluate the actual limitations of the systems, we have performed a more systematic evaluation that involved the basic shapes that form a gas jet nozzle, i.e., tubes and hollow cones. As an example, a study of different cone opening angles (a) using a transparent resin is shown in Fig. 3(a).



The main design failure is when a gas jet gets blocked, so we especially investigated the influence that the performance of the printers has on the production of tubes of different sizes. We therefore conceived a test object consisting of holes of 0.1–5 mm diameter and 1, 2, 5, and 10  $\mu\text{m}$  thickness (Fig. 3(d)). Backlit photographs, taken with a Canon EOS 600D digital camera, for both SLA and SLS are shown in Figs. 3(b) and 3(c). Using the backlighting, it is evident which holes are blocked with material and therefore unsuitable for gas jet design. We observe not only a diameter dependence, but also strong influence of the channel depth, especially in the SLA case.

At 1 mm thickness, the SLS printed piece is open up to diameters of 0.9 mm. Below this the channel is still open, but the holes are smaller than intended (see Fig. 3(e)), and at less than 0.7 mm the holes are blocked. At 2 mm thickness already holes of 1 mm are not always reproducible and above only holes with diameters greater than 1.5 mm remain open. For SLA we observe an even stronger dependence on the aspect ratio: while thin samples of 1 mm thickness remain open for diameters  $\geq 0.7$  mm, the pieces get quickly stuck with increasing thickness of the sample. For 5 mm channels, only samples with an opening  $\geq 2$  mm remain unblocked. At 10 mm thickness, this value increases to 3 mm (see Fig. 3).

We also used a Zeiss Axio Imager.A2m microscope to look in detail at the quality of the tube openings for 1 mm depth and 0.8–2.0 mm diameter (Figs. 3(e) and 3(f)). It is obvious that SLS (e) and SLA (f) have a very different performance. The granular SLS reproduces well the circular shape at 2 mm diameter, but struggles with 0.8 mm. So while it seemed in Fig. 3(c) that SLA performs well for thin samples, the microscopy images show that the shape is not well reproduced.

Figure 4(a) shows the schematics of a standard nozzle design. We created a set of test nozzles for exit diameters  $D_e = 1 - 3$  mm, different Mach numbers  $M \simeq D_e/D_0 = 2 - 4$  and opening angles  $\varphi = 10^\circ - 30^\circ$ . The total set consists of 45 different nozzle heads for each SLA and SLS. Again we find that only nozzles with diameters greater than 2 mm can be printed without the need of post-processing. As an example, Figs. 4(c) and 4(d) show interferometric measurements of the gas flow from Mach 3 nozzles of 3 mm diameter. The measurements are taken in vacuum with a HeNe laser illuminating the sample. The beam is then self-interfered using a Nomarski interferometer.<sup>40</sup> Assuming circular symmetry, we apply an Abel transform to obtain estimations for the gas density from the measured phase shift. While the exit hole  $D_e$  is better reproduced by SLS than SLA (see Figs. 3(e) and 3(f)), we observe that the SLA gas flow is more homogeneous than the SLS jet. This is due to the fact that SLS, though leading to a less regular exit hole shape, has a better performance of printing small tubes of several millimeter lengths as seen in Figs. 3(b) and 3(c). This results in an overall better printing of the entrance hole  $D_0$  than for the SLS case. Also, the resin has a reduced surface roughness compared to the grains used for SLA, which should also increase the Mach number in favor of SLS.

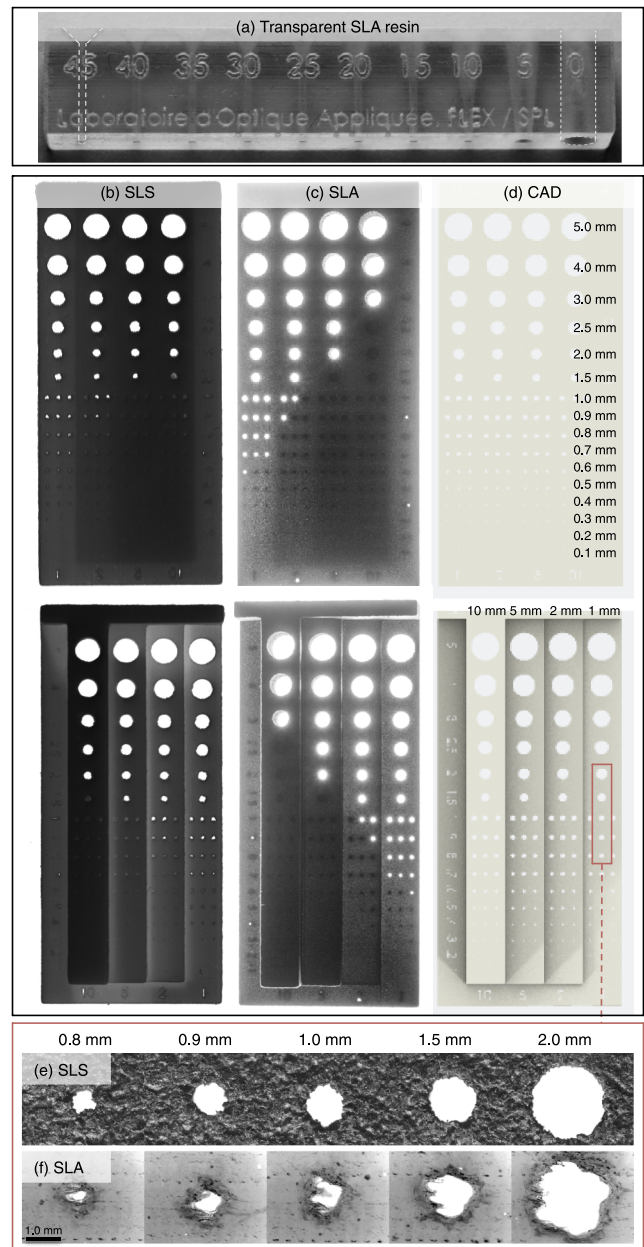


FIG. 3. (a) Example for a cone test print with different opening angles  $\varphi$ . (b)–(f) Test prints to determine the effective resolution of SLA and SLS printers. (d) is a render of the original CAD model, with holes from 0.1 to 5.0 mm diameter and depth from 1 to 10 mm. (b) and (c) show backlit photographs of the front and back of the test piece. (e) and (f) show microscopy images for a selection of holes marked by the red rectangle in (d).

## V. APPLICATION IN EXPERIMENTS

After the initial characterization from Sec. IV, we have employed 3D printed gas jet nozzles in laser wakefield acceleration experiments. For this we used the SALLE JAUNE Laser at Laboratoire d'Optique Appliquée. The system delivers linearly polarized 1 J/28 fs (FWHM) pulses at a central wavelength of 810 nm, which are then focused onto the gas target with an off-axis parabola. As reservoir gas we have used pure helium.

In a first experiment, we have used FDM printed jets. The density profile of the jet is shown in Fig. 4(b). We observe acceleration of self-injected electrons<sup>21</sup> to energies in the 100–300 MeV range. As the results of this experiment will be

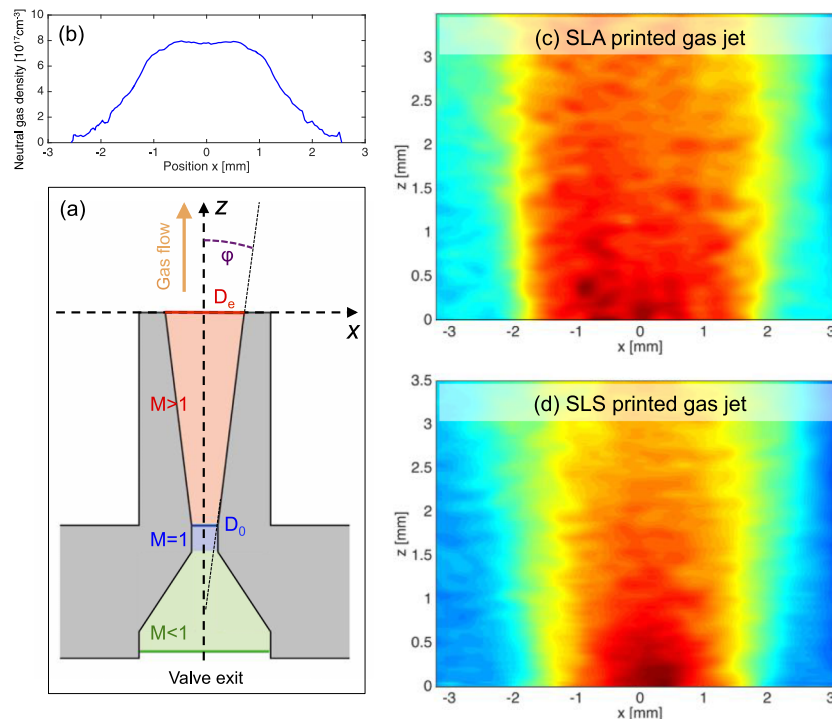


FIG. 4. (a) Schematic design of a supersonic de Laval nozzle. Main parameters are the inner diameter  $D_0$  and the exit diameter  $D_e$ , the Mach number  $M$  and the opening angle  $\phi$ . (b) Interferometrically measured density profiles at  $z = 0.3$  mm for a FDM printed jet. (c) and (d) show density profile maps  $n_e(x, z)$  for SLA and SLS printed nozzles, respectively.

published elsewhere, we will focus our discussion on the performance of the jet. First of all, we have not experienced significant performance differences between 3D printed and CNC milled nozzles. During test the nozzles easily withstood backing pressures of up to 50 bars (higher pressures were not tested). Also, while the laser-plasma interaction leads to visible degradation of the surface, performance of the jet showed no significant change over several hundred laser shots. Furthermore it was reported that 3D printed materials suffer from significant outgassing.<sup>41</sup> However, for the experimental requirements of laser wakefield acceleration (vacuum pressures of  $\sim 10^{-3}$  to  $10^{-5}$  mbar), this is no problem and 3D printed parts can be used without concerns.

One of the main premises of 3D printing is the possibility to create complex geometries. Such geometries can be required for advanced experimental configuration, like a laser-plasma accelerator coupled to a laser-plasma lens.<sup>14</sup> Here a single laser pulse serves as driver for the wakefield accelerator, but also creates focusing fields in a subsequent jet. This second jet needs to be placed just a few millimeters behind the exit of the first. The jets cannot be placed opposing to each other, as this would cause turbulences in the gas flow. Instead, the nozzle exit has to be placed close to the outer edge of the valve. Using traditional production techniques, such jets would be produced using either milling of two separate pieces or by molding. The former requires high accuracy in production and alignment, while molding requires a core to be produced and micro-molding is rather costly. As an alternative, we have designed a new gas jet nozzle whose exit is displaced with respect to the valve. The initial CAD model was imported into the computational fluid dynamics software ANSYS FLUENT, where we simulated the gas expansion into vacuum on a 2D

adaptive mesh. As shown in Fig. 5(a), there is little influence of the design on the flow symmetry at the exit. We therefore went on to print the nozzle using SLS and SLA. As expected from our previous study, the deep channel was blocked for SLS printing. Instead we chose the SLA nozzle and post-processed the exit with a drill. The nozzle was then used in the experiment on relativistic electron beam focusing using a laser-plasma lens. While the design could not provide a sharp density profile due to the sonic flow, it allowed the nozzle to be placed very close to the exit of a first gas jet and thus serve as focusing element for the electron beam.<sup>14</sup>

## VI. CONCLUSIONS AND OUTLOOK

In conclusion, we have presented the current state of our ongoing investigations on various 3D printing (additive manufacturing) techniques for the production of gas jet nozzles. Using commercial printers, we estimate as a current design guideline to print at least with a minimal diameter of 1 mm in order to avoid obstructions in the gas channel. As seen in Fig. 1, this will be sufficient for most experiments on laser wakefield acceleration. We also demonstrated that 3D printing allows the design of unconventional nozzle designs for special applications, e.g., as second nozzle for a laser-plasma lens. As 3D printed parts possess a good structural integrity (except shear stress along the print layer), we have also started to investigate further usage in experiment. For instance, the technique is well-suited to design and timely produce personalized mounts. Also, for certain materials, an additional surface treatment, e.g., with acetone, may serve as simple solution to improve the print quality. Including the continuing price reduction, availability of new materials, and

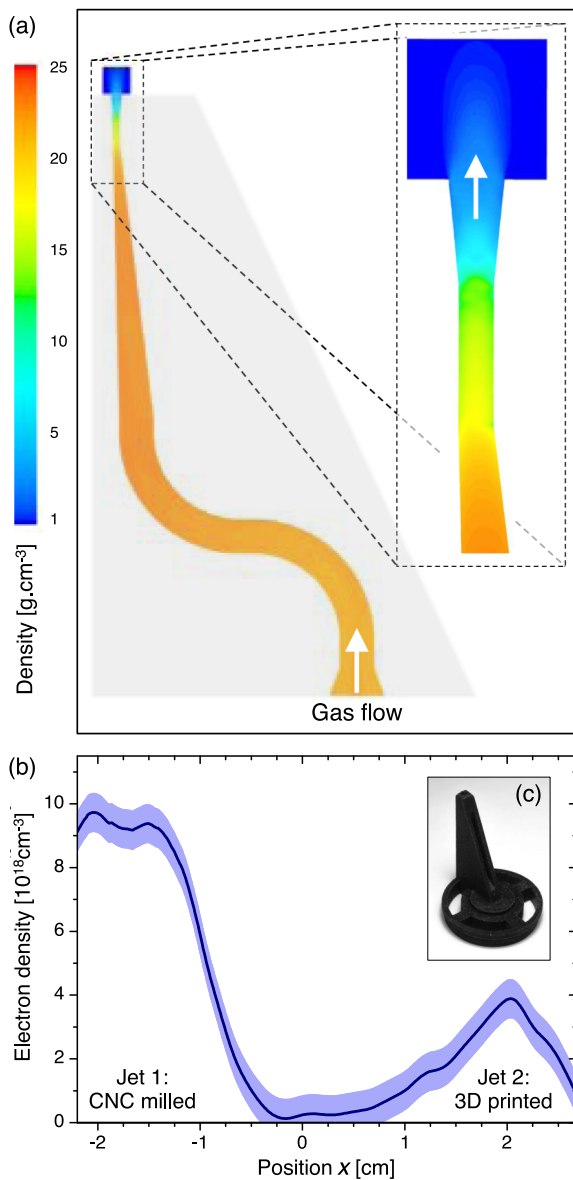


FIG. 5. (a) ANSYS FLUENT simulation of the density profile in an asymmetric gas jet nozzle. As seen in the enlarged frame the exit flow is mostly symmetric, despite the asymmetrical layout. (b) Interferometric gas density measurements along the laser propagation from experiments on laser-plasma lensing.<sup>14</sup> Due to the sonic expansion, the gas profile of the 3D printed jet is peaked, while the supersonic flow of the adjacent aluminum nozzle leads to a sharper density transition. The final printed nozzle design is shown as inset (c).

so forth, we anticipate that the technology will soon find its way into more laboratory applications.

## ACKNOWLEDGMENTS

The authors acknowledge support from the Agence Nationale pour la Recherche through the FENICS Project No. ANR-12-JS04-0004-01, the Agence Nationale pour la Recherche through the FEMTOMAT Project No. ANR-13-BS04-0002, the X-Five ERC Project (Contract No. 339128), EuCARD2/ANAC2 EC FP7 Project (Contract No. 312453), LA3NET Project (No. GA-ITN-2011-289191), and GARC Project No. 15-03118S. A.D. acknowledges S. Zierke (RWTH Aachen University), F. Sylla (SourceLab), and C. Ruiz

(Universidad de Salamanca) for helpful discussions, and FabLab (Institut d'Optique) and Sculpteo for printing services and support.

- <sup>1</sup>H. Wiedemann, *Particle Accelerator Physics*, 4th ed. (Springer International Publishing, 2015).
- <sup>2</sup>E. Esarey, C. B. Schroeder, and W. P. Leemans, *Rev. Mod. Phys.* **81**, 1229 (2009).
- <sup>3</sup>V. Malka, S. Fritzler, E. Lefebvre, M.-M. Aleonard, F. Burgy, J. P. Chambaret, J.-F. Chemin, K. Krushelnick, G. Malka, and S. Mangles, *Science* **298**, 1596 (2002).
- <sup>4</sup>Y. Glinec, J. Faure, L. L. Dain, S. Darbon, T. Hosokai, J. J. Santos, E. Lefebvre, J. P. Rousseau, F. Burgy, B. Mercier, and V. Malka, *Phys. Rev. Lett.* **94**, 025003 (2005).
- <sup>5</sup>A. Döpp, E. Guillaume, C. Thauray, A. Lifschitz, F. Sylla, J. P. Goddet, A. Tafzi, G. Iaquanello, T. Lefrou, P. Rousseau, E. Conejero, C. Ruiz, K. Ta Phuoc, and V. Malka, "A bremsstrahlung gamma-ray source based on stable ionization injection of electrons into a laser wakefield accelerator," *Nucl. Instrum. Methods Phys. Res., Sect. A* (published online 2016).
- <sup>6</sup>H. P. Schlenvoigt, K. Haupt, A. Debus, F. Budde, O. Jackel, S. Pfotenhauer, H. Schwoerer, E. Rohwer, J. G. Gallacher, E. Brunetti, R. P. Shanks, S. M. Wiggins, and D. A. Jaroszynski, *Nat. Phys.* **4**, 130 (2008).
- <sup>7</sup>K. Ta Phuoc, S. Corde, C. Thauray, V. Malka, A. Tafzi, J. P. Goddet, R. C. Shah, S. Sebban, and A. Rousse, *Nat. Photonics* **6**, 308 (2012).
- <sup>8</sup>N. D. Powers, I. Ghebregziabher, G. Golovin, C. Liu, S. Chen, S. Banerjee, J. Zhang, and D. P. Umstadter, *Nat. Photonics* **8**, 28 (2013).
- <sup>9</sup>A. Rousse, K. T. Phuoc, R. Shah, A. Pukhov, E. Lefebvre, V. Malka, S. Kiselev, F. Burgy, J. P. Rousseau, D. Umstadter, and D. Hulin, *Phys. Rev. Lett.* **93**, 135005 (2004).
- <sup>10</sup>K. Schmid, A. Buck, C. M. S. Sears, J. M. Mikhailova, R. Tautz, D. Herrmann, M. Geissler, F. Krausz, and L. Veisz, *Phys. Rev. Spec. Top.-Accel. Beams* **13**, 091301 (2010).
- <sup>11</sup>A. Buck, J. Wenz, J. Xu, K. Khrennikov, K. Schmid, M. Heigoldt, J. M. Mikhailova, M. Geissler, B. Shen, F. Krausz, S. Karsch, and L. Veisz, *Phys. Rev. Lett.* **110**, 185006 (2013).
- <sup>12</sup>A. Döpp, E. Guillaume, C. Thauray, A. Lifschitz, K. Ta Phuoc, and V. Malka, *Phys. Plasmas* **23**, 056702 (2016).
- <sup>13</sup>E. Guillaume, A. Döpp, C. Thauray, K. Ta Phuoc, A. Lifschitz, G. Grittani, J. P. Goddet, A. Tafzi, S. W. Chou, L. Veisz, and V. Malka, *Phys. Rev. Lett.* **115**, 155002 (2015).
- <sup>14</sup>C. Thauray, E. Guillaume, A. Döpp, R. Lehe, A. Lifschitz, K. T. Phuoc, J. Gautier, J. P. Goddet, A. Tafzi, A. Flacco, F. Tissandier, S. Sebban, A. Rousse, and V. Malka, *Nat. Commun.* **6**, 1 (2015).
- <sup>15</sup>S. Mangles, *CERN Yellow Rep.* **1**, 289 (2016).
- <sup>16</sup>C. Benedetti, C. B. Schroeder, E. Esarey, F. Rossi, and W. P. Leemans, *Phys. Plasmas* **20**, 103108 (2013).
- <sup>17</sup>A. Butler, D. J. Spence, and S. M. Hooker, *Phys. Rev. Lett.* **89**, 185003 (2002).
- <sup>18</sup>W. P. Leemans, B. Nagler, A. J. Gonsalves, C. Tóth, K. Nakamura, C. G. R. Geddes, E. Esarey, C. B. Schroeder, and S. M. Hooker, *Nat. Phys.* **2**, 696 (2006).
- <sup>19</sup>W. P. Leemans, A. J. Gonsalves, H. S. Mao, K. Nakamura, C. Benedetti, C. B. Schroeder, C. Toth, J. Daniels, D. E. Mittelberger, S. S. Bulanov, J. L. Vay, C. G. R. Geddes, and E. Esarey, *Phys. Rev. Lett.* **113**, 245002 (2014).
- <sup>20</sup>J. Ju, K. Svensson, A. Döpp, H. E. Ferrari, K. Cassou, O. Neveu, G. Genoud, F. Wojda, M. Burza, A. Persson, O. Lundh, C. G. Wahlstrom, and B. Cros, *Appl. Phys. Lett.* **100**, 191106 (2012).
- <sup>21</sup>S. Corde, A. Lifschitz, G. Lambert, K. T. Phuoc, X. Davoine, R. Lehe, D. Douillet, A. Rousse, V. Malka, and C. Thauray, *Nat. Commun.* **4**, 1501 (2013).
- <sup>22</sup>J. Ju and B. Cros, *J. Appl. Phys.* **112**, 113102 (2012).
- <sup>23</sup>S. Semushin and V. Malka, *Rev. Sci. Instrum.* **72**, 2961 (2001).
- <sup>24</sup>K. Schmid and L. Veisz, *Rev. Sci. Instrum.* **83**, 053304 (2012).
- <sup>25</sup>Z. Najmudin, S. Kneip, M. S. Bloom, S. P. D. Mangles, O. Chekhlov, A. E. Dangor, A. Döpp, K. Ertel, S. J. Hawkes, J. Holloway, C. J. Hooker, J. Jiang, N. C. Lopes, H. Nakamura, P. A. Norreys, P. P. Rajeev, C. Russo, M. J. V. Streeter, D. R. Symes, and M. Wing, *Philos. Trans. R. Soc., A* **372**, 20130032 (2014).
- <sup>26</sup>F. Sylla, M. Veltcheva, S. Kahaly, A. Flacco, and V. Malka, *Rev. Sci. Instrum.* **83**, 033507 (2012).
- <sup>27</sup>G. Golovin, S. Chen, N. Powers, C. Liu, S. Banerjee, J. Zhang, M. Zeng, Z. Sheng, and D. Umstadter, *Phys. Rev. Spec. Top.-Accel. Beams* **18**, 011301 (2015).



- <sup>28</sup>E. Sachs, M. Cima, and J. Cornie, *CIRP Annals - Manufact. Technol.* **39**(1), 201–204 (1990).
- <sup>29</sup>G. N. Levy, R. Schindel, and J. P. Kruth, *CIRP Ann. - Manuf. Technol.* **52**, 589 (2003).
- <sup>30</sup>K. V. Wong and A. Hernandez, *ISRN Mech. Eng.* **2012**, 1.
- <sup>31</sup>B. P. Conner, G. P. Manogharan, A. N. Martof, L. M. Rodomsky, C. M. Rodomsky, D. C. Jordan, and J. W. Limperos, *Addit. Manuf.* **1**, 64 (2014).
- <sup>32</sup>B. Berman, *Bus. Horiz.* **55**, 155 (2014).
- <sup>33</sup>B. C. Gross, J. L. Erkal, S. Y. Lockwood, C. Chen, and D. M. Spence, *Anal. Chem.* **86**, 3240 (2014).
- <sup>34</sup>W. Gao, Y. Zhang, D. Ramanujan, K. Ramani, Y. Chen, C. B. Williams, C. C. L. Wang, Y. C. Shin, S. Zhang, and P. D. Zavattieri, *Comput.-Aided Des.* **69**, 65 (2015).
- <sup>35</sup>P. F. Jacobs, *Rapid Prototyping & Manufacturing: Fundamentals of Stereolithography* (Society of Manufacturing Engineers, 1992).
- <sup>36</sup>J. P. Kruth, P. Mercelis, J. Van Vaerenbergh, L. Froyen, and M. Rombouts, *Rapid Prototyping J.* **11**, 26 (2005).
- <sup>37</sup>M. Vargas, W. Schumaker, Z. H. He, Z. Zhao, K. Behm, V. Chvykov, B. Hou, K. Krushelnick, A. Maksimchuk, V. Yanovsky, and A. G. R. Thomas, *Appl. Phys. Lett.* **104**, 174103 (2014).
- <sup>38</sup>S. W. Jolly, Z. He, C. McGuffey, W. Schumaker, K. Krushelnick, and A. G. R. Thomas, *Rev. Sci. Instrum.* **83**, 073503 (2012).
- <sup>39</sup>D. D. Hernandez, *Int. J. Aviat., Aeronaut. Aerosp.* **2**, 1 (2015).
- <sup>40</sup>R. Benattar, C. Popovics, and R. Sigel, *Rev. Sci. Instrum.* **50**, 1583 (1979).
- <sup>41</sup>A. P. Povilus, C. J. Wurdien, Z. Vendeiro, M. Baquero-Ruiz, and J. Fajans, *J. Vac. Sci. Technol., A* **32**, 033001 (2014).
- <sup>42</sup>B. N. Turner and S. A. Gold, *Rap. Prototyping J.* **21**(3), 250–261 (2015).