



HAL
open science

Interactions at the Peptide/Silicon Surfaces: Evidence of Peptide Multilayer Assembly

Zsuzsanna Pápa, Sathish Kumar Ramakrishnan, Marta Martin, Thierry Cloitre, László Zimányi, Jessica Márquez, Judit Budai, Zsolt Tóth, Csilla Gergely

► To cite this version:

Zsuzsanna Pápa, Sathish Kumar Ramakrishnan, Marta Martin, Thierry Cloitre, László Zimányi, et al.. Interactions at the Peptide/Silicon Surfaces: Evidence of Peptide Multilayer Assembly. *Langmuir*, 2016, 10.1021/acs.langmuir.6b00916 . hal-01343767

HAL Id: hal-01343767

<https://hal.science/hal-01343767v1>

Submitted on 27 Nov 2024

HAL is a multi-disciplinary open access archive for the deposit and dissemination of scientific research documents, whether they are published or not. The documents may come from teaching and research institutions in France or abroad, or from public or private research centers.

L'archive ouverte pluridisciplinaire **HAL**, est destinée au dépôt et à la diffusion de documents scientifiques de niveau recherche, publiés ou non, émanant des établissements d'enseignement et de recherche français ou étrangers, des laboratoires publics ou privés.

Interactions at the peptide/silicon surfaces – Evidence of peptide multilayer assembly

Zsuzsanna Pápa, Sathish Kumar Ramakrishnan, Marta Martin, Thierry Cloitre,
Laszlo Zimanyi, Jessica Marquez, Judit Budai, Zsolt Toth, and Csilla Gergely

Langmuir, **Just Accepted Manuscript** • DOI: 10.1021/acs.langmuir.6b00916 • Publication Date (Web): 17 Jun 2016

Downloaded from <http://pubs.acs.org> on June 18, 2016

Just Accepted

“Just Accepted” manuscripts have been peer-reviewed and accepted for publication. They are posted online prior to technical editing, formatting for publication and author proofing. The American Chemical Society provides “Just Accepted” as a free service to the research community to expedite the dissemination of scientific material as soon as possible after acceptance. “Just Accepted” manuscripts appear in full in PDF format accompanied by an HTML abstract. “Just Accepted” manuscripts have been fully peer reviewed, but should not be considered the official version of record. They are accessible to all readers and citable by the Digital Object Identifier (DOI®). “Just Accepted” is an optional service offered to authors. Therefore, the “Just Accepted” Web site may not include all articles that will be published in the journal. After a manuscript is technically edited and formatted, it will be removed from the “Just Accepted” Web site and published as an ASAP article. Note that technical editing may introduce minor changes to the manuscript text and/or graphics which could affect content, and all legal disclaimers and ethical guidelines that apply to the journal pertain. ACS cannot be held responsible for errors or consequences arising from the use of information contained in these “Just Accepted” manuscripts.



Interactions at the peptide/silicon surfaces – Evidence of peptide multilayer assembly

Zsuzsanna Pápa ^{a*}, Sathish Kumar Ramakrishan ^{b,c*}, Marta Martin ^b, Thierry Cloitre ^b, László Zimányi ^d, Jessica Márquez ^{d,e}, Judit Budai ^a, Zsolt Toth ^f, Csilla Gergely ^{b#}.

^a Department of Optics and Quantum Electronics, University of Szeged, Szeged, Hungary.

^b Laboratoire Charles Coulomb (L2C), UMR 5221 CNRS-Université de Montpellier, Montpellier, France.

^c Nanobiology Institute, Yale University, West Haven, CT, United States

^d Institute of Biophysics, Biological Research Centre of the Hungarian Academy of Sciences, Szeged, Hungary

^e Faculty of Chemical Sciences, Universidad Autónoma de San Luis Potosí, San Luis Potosí, Mexico

^f Department of Oral Biology and Experimental Dental Research, University of Szeged, Szeged, Hungary

*These authors contributed equally to this work.

KEYWORDS: ellipsometric evaluation, peptide layer, patterned layer, atomic force microscopy, surface coverage

Abstract

Selective deposition of peptides from liquid solutions to n- and p-doped silicon has been demonstrated. The selectivity is governed by peptide/silicon adhesion differences. A non-invasive, fast characterization of the obtained peptide layers is required to promote their application for interfacing silicon-based devices with biological material. In this study we show that spectroscopic ellipsometry – a method increasingly used for the investigation of bio-interfaces – can provide essential information about the amount of adsorbed peptide material and the degree of coverage on silicon surfaces. We observed the formation of peptide multilayers for a strongly binding adhesion peptide on p-doped silicon. Application of the patterned layer ellipsometric evaluation method combined with Sellmeier-dispersion led to physically consistent results, which describe well the optical properties of peptide layers in the visible spectral range. This evaluation allowed the estimation of surface coverage, which is an important indicator of adsorption quality. The ellipsometric findings were well supported by atomic force microscopy results.

1. Introduction

Hybrid systems constituted by inorganic materials interfaced with peptides or proteins resulted in the emergence of new, promising applications for directed materials engineering, nanophotonics and bionanotechnology.¹⁻³ Due to their technological versatility, silicon (Si) containing materials and nanostructured silicon materials such as nanocrystals, nanorods, nanowires, and porous silicon have become increasingly popular for applications in storage, batteries and sensing devices.⁴⁻⁶ Control of Si surface chemistry is crucial either for fabricating electronic devices or to couple organic molecules for sensing. However, device functionality can be seriously limited by complex phenomena at the solid/liquid interface often resulting in a loss of activity of biological molecules due to their unfolding upon immobilization. Therefore, various surface modification strategies are employed to avoid unwanted denaturation of biomolecules when adsorbed on Si. Classical chemical methods of functionalization raise concerns related to toxic effects, loss of biomolecule activity or binding affinities.⁷ Bio-inspired routes for controlling surface chemistry and morphology overcome these drawbacks and provide high level of integration and miniaturization from nano to millimetric scale. Peptide-route functionalization of Si with small peptides by simple adsorption provides a satisfying solution in terms of control of the extent of surface modification, of selectivity and ease of implementation compared to other surface modification strategies.⁸⁻¹¹ Combinatorial phage libraries are widely used to isolate high affinity peptides against a given target material.^{12, 13} Selective recognition mechanisms of the isolated peptides are well exploited to engineer functional hybrid materials, but the underlying molecular mechanism remains unknown.

Numerous theoretical studies addressed the mechanism of adhesion between peptide and inorganic substrate.¹⁴⁻¹⁷ In a recent work of our group,¹⁸ we investigated the adsorption on the n-type silicon of three 12-mer peptides that were previously elaborated by phage display technology (P1, P2 and P3, see Table 1).⁸ Molecular dynamics simulations have been performed to reveal the organization of the peptides on the surface and to identify the amino acids

1
2
3 responsible for stronger binding based on the distance to the surface. We have shown that both
4 the amino acid sequence and the molecular architecture of the peptide are key determinants for
5 the selective binding of peptides onto Si. According to the calculations, in the case of n^+ -type Si,
6 P2 showed better adhesion than P1, whereas in the case of p^+ -type Si, the best binding properties
7 could be predicted for the P3 peptide.
8
9

10
11
12 Although theoretical studies can provide the understanding of the molecular assembly processes
13 and dynamics at the level of single amino acid or peptide, the reliability of simulation models is
14 dependent on the accuracy of the force field parameters used. Silicon is a very challenging
15 material to model due to its heterogeneity and tendency of forming oxide upon immediate
16 exposure to air or water. Available force fields are entirely dependent on parameterization based
17 on the bulk properties of silicon and have not been validated to study biomolecule-inorganic
18 interface.¹⁹⁻²¹ Significant developments were made in the past,²² but a reliable force field is yet to
19 be developed based on experimental evidence. The challenge is to validate the calculated peptide
20 structure, its surface recognition efficiency and the percentage of coverage, as yet there are no
21 published experimental data available to test the accuracy of the theoretical results. Techniques
22 such as ellipsometry, atomic force microscopy (AFM) or Fourier transform infrared spectroscopy
23 in attenuated total reflection mode (ATR-FTIR) can provide meaningful data for surface
24 coverage, which can be used in theoretical calculations. Ellipsometry is increasingly employed to
25 investigate protein layers in both the visible and the infrared spectral range due to its detection
26 sensitivity and flexibility.^{23, 24} Ellipsometric evaluation provided a wealth of information such as
27 thickness and structure of the layers, and their optical properties.²⁵⁻²⁷ On the other hand, AFM
28 was previously employed to calculate the peptide adhesion coefficient on silica surface and
29 subsequently validated with theoretical simulations.²⁸ Merging information from several
30 experimental methods facilitates the development of accurate and reliable force fields for
31 theoretical calculations.
32
33
34
35
36
37
38
39
40
41
42
43
44
45
46
47
48

49 Our previous theoretical and experimental findings revealed specific adhesion trends for some
50 peptides against n^+ and p^+ -Si substrates. The sequences of the investigated peptides presenting
51 different levels of affinity for these substrates are listed in Table 1. While the P1 peptide
52 displayed similar adherence to both types of Si, P2 and P3 peptides showed higher affinity for n^+
53 and p^+ -Si, respectively. The PC4 peptide was also studied as a truncated variant of P3 exhibiting
54
55
56
57
58
59
60

enhanced adhesion for p⁺-Si.²⁹ The biotinylated forms (using a GGSK linker) of the P1 and P3 peptides were also considered as these molecules can be used to detect various streptavidin-associated species.⁸ With the aim to comprehend and control the design of peptide-silicon interfaces, we now performed spectroscopic ellipsometry and AFM experiments providing information on the refractive index, thickness, and surface coverage of peptide layers on n-type and p-type silicon.

Table 1. Sequence of peptides exhibiting high affinity for n⁺, or p⁺- type silicon as obtained by the phage display technique⁸ and/or synthesized according to the notations in references 18 (P1, P2, P3) and 27 (PC4). ^aThe isoelectric point values were calculated using the pI/Mw tool at <http://expasy.org>.

<i>Peptides</i>	<i>Surface</i>	<i>pI^a</i>
SVSVGMPKSPRP (P1)	n ⁺ , p ⁺ -Si	11
LLADTTHHRPWT (P2)	n ⁺ -Si	6.92
SPGLSLVSHMQT (P3)	p ⁺ -Si	6.46
SLVSHMQT (PC4)	p ⁺ -Si	6.46
SVSVGMPKSPRP-GGSK- biotin (P1-B)	n ⁺ , p ⁺ -Si	11.17
SPGLSLVSHMQT-GGSK-biotin (P3-B)	p ⁺ -Si	8.49

2. Materials and Methods

2.1 Peptides

Prior to this work, a phage display 12mer peptide library was used to isolate the specific peptides against n⁺ and p⁺ silicon surfaces.⁸ Based on their obtained sequences, peptides were synthesized by the standard solid phase peptide synthesis (SPPS) method using Fmoc chemistry on Fmoc

1
2
3 Rink amide PS resin. The synthesis of biotinylated peptides, P1B and P3B, was reported in our
4 previous work.²⁹ The synthesized crude peptides were purified by high performance liquid
5 chromatography and analyzed by LC/MS, 1H, and 13C NMR and used without further
6 purification. Absorbance of the peptides diluted in phosphate-buffered saline solution containing
7 0.1% Tween-20 (130 mM PBST/10) at 20 μ M concentration was measured with a UV/vis
8 (UNICAM UV4) spectrophotometer in the 2.5-6.5 eV range using a 1 cm cuvette.
9
10
11
12
13

14 **2.2 Peptide adsorption on silicon**

15
16
17 Silicon (100) wafers, highly doped by either boron (p^+) or phosphorous (n^+), were first exposed
18 to HF for 10 min to remove native oxide, then rinsed with deionized water for one minute. The
19 surfaces were then incubated with the synthesized peptides at 20 μ M concentration diluted in
20 130 mM PBS solution containing 0.1% Tween-20 (PBST/10) in presence of 0.1% bovine serum
21 albumin (BSA) for 2 hours. The role of Tween and BSA was to prevent nonspecific interactions
22 on the surface. Then a thorough rinsing step in PBST/10 and distilled water was performed to
23 remove unbound peptides. The samples were then gently dried with N_2 before recording their
24 reflectivity spectra.
25
26
27
28
29
30
31

32 **2.3 Spectroscopic ellipsometry**

33
34 Spectroscopic ellipsometry measures the complex reflectance ratio, ρ , as a function of photon
35 energy (wavelength), which is described by two angles (Ψ and Δ) according to the following
36 equation:
37
38
39

$$40 \rho = \frac{r_p}{r_s} = tg(\Psi)e^{i\Delta},$$

41
42
43
44
45 where r_p and r_s are the reflectance of the light polarized parallel and perpendicular to the plane of
46 incidence, respectively, $tg(\Psi)$ is the amplitude of ρ , while Δ is its phase. ρ is in correlation with
47 the optical properties of bulk materials, which are characterized by the refractive index - n , and
48 the extinction coefficient - k or, equivalently, by the real and imaginary parts of the complex
49 dielectric function (ϵ_1 and ϵ_2 , respectively). In case of single- or multilayers on a bulk substrate,
50 the polarization state of reflected light depends on the structure and the thickness(es) of the
51 layer(s) besides their optical properties. To obtain the characteristics of the investigated samples,
52 their structural and optical properties have to be modeled. During an indirect fitting procedure
53
54
55
56
57
58
59
60

1
2
3 the n , k and thickness values in the model are varied until an appropriate fit of the measured Ψ
4 and Δ spectra is found based on the Mean Square Error (MSE) value.³⁰ If appropriate MSE
5 values are reached, the actual n , k and thickness values of the model are considered as the ones of
6 the investigated sample.
7
8
9

10
11 In this study, Ψ and Δ values were measured as a function of the photon energy using a Woollam
12 M2000 rotating compensator ellipsometer in the range of 1.24–5 eV (1000–248 nm). Angles of
13 incidences were chosen close to the Brewster angle of silicon; 65°, 70° and 75°. The samples
14 were gently dried and then measured at three different positions (size of the illuminated spot was
15 in the range of a few mm²). Measurement errors arise from the standard deviations of the
16 evaluation results of these different measurement positions for a given sample. Analysis of the
17 spectra was performed using the WVASE32 software.
18
19
20
21
22
23
24
25

26 27 **2.4 Atomic force microscopy**

28 AFM images on samples prepared in the same way as for ellipsometry were recorded in air using
29 an Asylum MFP-3D head equipped with a Molecular Force Probe 3D controller (Asylum
30 Research, Santa Barbara, CA, USA). Tapping (AC) mode was selected as the imaging mode, and
31 rectangular silicon nitride cantilevers from Olympus (OMCL-AC160TM, Tokyo, Japan) with a
32 spring constant of 4nN/nm were employed. The spring constant was determined using the
33 thermal noise method within the software supplied. Height, amplitude, and phase images were
34 recorded. In the last mode, compositional variations were measured by the phase lag of the
35 vibrating probe with respect to the external excitation. Phase lag of the oscillation allows us to
36 explore tip–surface elastic and inelastic interactions, giving a qualitative measure of the energy
37 dissipation involved in the contact between the tip and the sample, which depends on a number
38 of factors, including viscoelasticity, adhesion, variations in composition, hardness and the
39 chemical nature of the sample. Several trace and retrace scans were performed over a given
40 surface area to ensure reproducible images. The images were typically taken at 1 Hz scan rate
41 and digitized in 512×512 pixels. They were first recorded at 80×80 μm^2 , and then at 20×20 μm^2
42 to achieve better resolution. At least three 20×20 μm^2 images of different zones were recorded
43 and used for the statistical analysis for each sample. Covered surface ratios were also calculated
44 using the supplied software.
45
46
47
48
49
50
51
52
53
54
55
56
57
58
59
60

3. Results and discussion

3.1 Absorbance measurements

Since ellipsometry is an indirect measurement technique, the final results strongly depend on the applied model. In order to find the appropriate ellipsometric model it is useful to perform some independent measurements on the investigated samples. First, the absorbance of the peptide solutions was determined (Fig. 1).

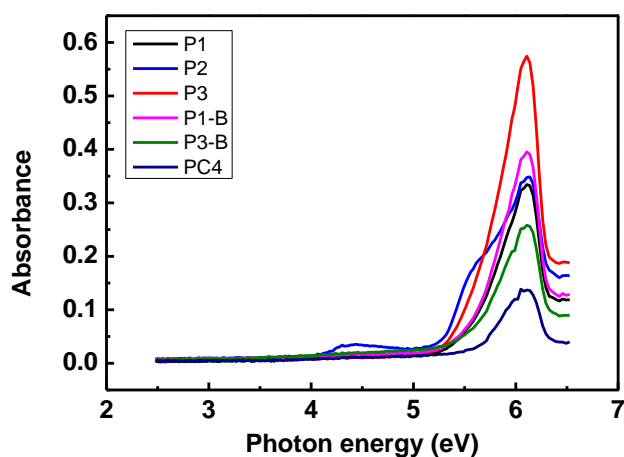


Fig. 1: Absorbance spectra of the peptide solutions. Strong absorption peaks are only present in the UV region, outside the spectral range covered by ellipsometry. For the abbreviations in the legend, see table 1.

According to the absorbance measurements, the peptide solutions can be considered transparent under 5 eV, i.e. in the spectral range of ellipsometric measurements. Based on these results, a transparent layer can be assumed in the ellipsometric model, which is a good starting point for modeling.

3.2 Ellipsometry

Ψ and Δ curves

In Fig. 2 (a) and (b), Ψ and Δ curves are shown as measured on n-type and p-type silicon surfaces before and after coating (as for example) with P3 peptide. The same measurements were performed for all the peptides listed in table 1. It was emphasized earlier that to get exact information from ellipsometric measurements, an optical model needs to be built. However, the difference between the curves measured before and after peptide deposition can already provide certain useful information.

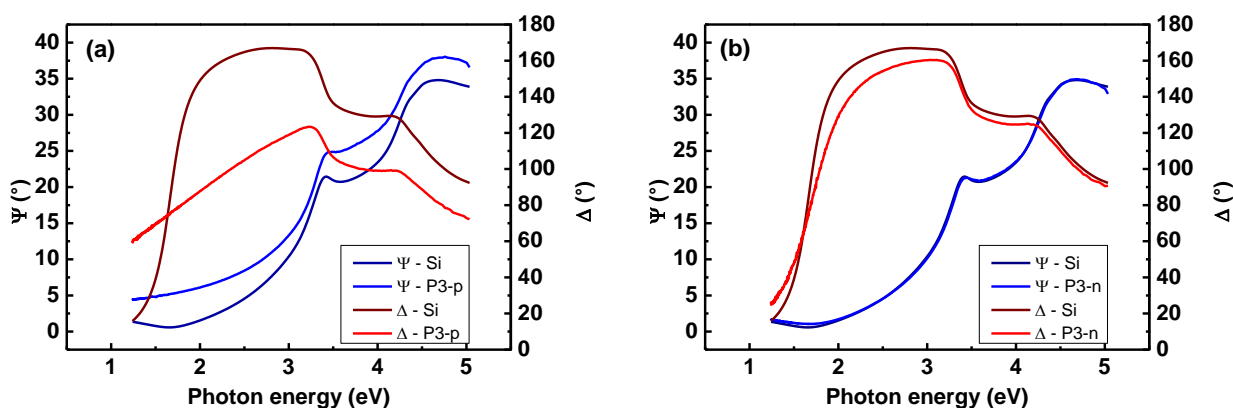


Fig. 2: Ψ and Δ curves related to P3 peptide deposited onto p-type (a) and n-type silicon (b). Data of uncoated silicon are also presented in both cases.

Clear differences versus Ψ and Δ of uncoated silicon are observable in the case of the P3 peptide deposited onto the p-type substrate. Much smaller differences between the curves correspond to smaller polarization changes caused by the peptide layer on n-type Si. This can be related to the optical properties and the amount of the deposited material. Assuming that peptides have similar optical properties on the p and n-type Si surfaces, the observed changes indicate different amounts of material deposited onto p-type or n-type Si surfaces. Note that Δ values follow more sensitively the changes on the sample surface, as has been shown earlier for rough Si surfaces and even for proteins as well.^{31, 32}

If the difference between the data of uncoated silicon and the data measured on peptide layers are plotted for each peptide (table 1) deposited onto p- and n-type substrates, one can have a first insight into the binding affinity of the peptides (Fig. 3).

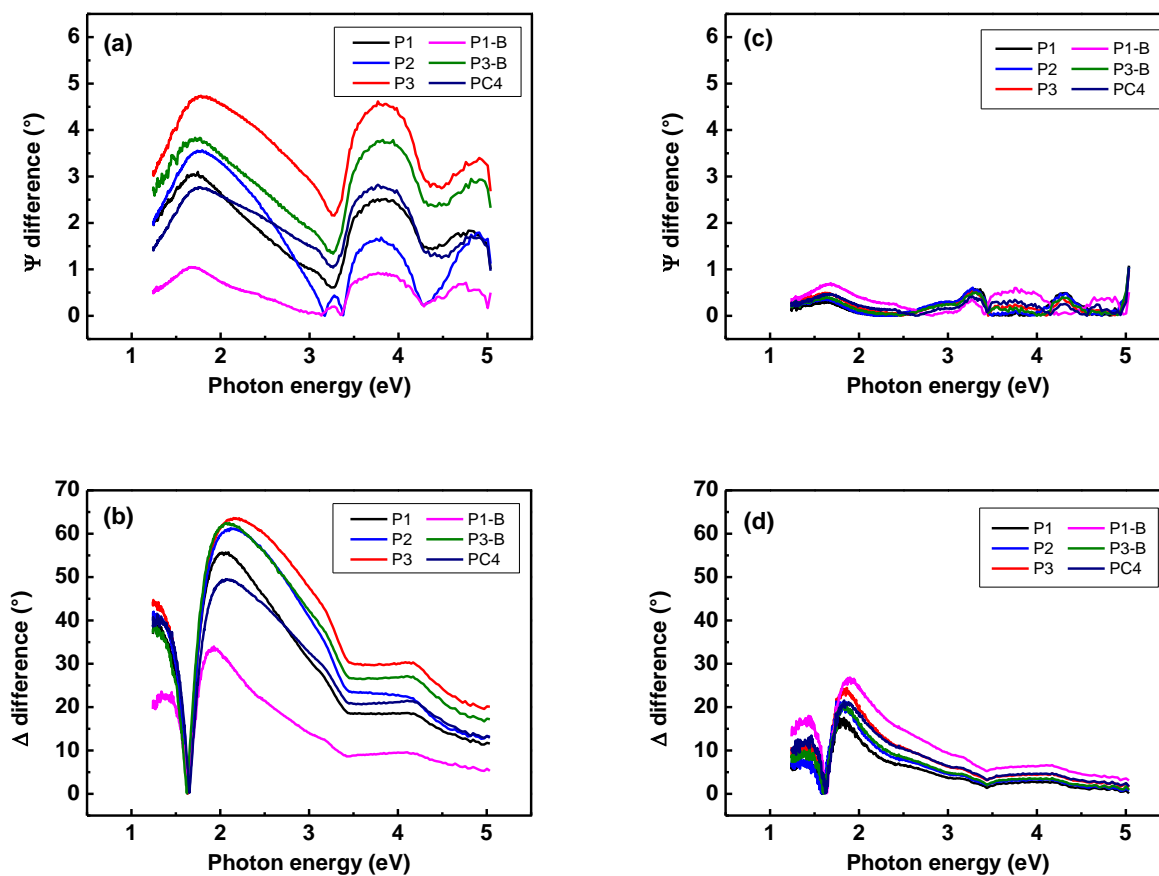


Fig. 3: Difference between the Ψ and Δ spectra of uncoated silicon and samples coated with peptide layers. Graphs (a) and (b) show Ψ and Δ differences measured on p-type silicon samples, and graphs (c) and (d) relate to n-type silicon samples. For easier comparison, the differences of Ψ curves and differences of Δ curves are plotted using the same scale for all the substrates.

In the case of p-type substrates, the changes are much larger than in the case of n-type substrates, which indicate a more efficient binding of the investigated peptides to p-type silicon. By considering only the differences measured on p-type samples, it can be stated that the largest effect relates to P3 peptide, and the weakest adhesion can be observed in the case of P1-B peptide.

Ellipsometric evaluation of peptide layers

During sample preparation, silicon substrates were treated with hydrofluoric acid in order to remove the native oxide layer. After oxide removal, two differently doped control samples (a p-type and an n-type) were measured with ellipsometry, and the others were coated with peptides. The native oxide layer builds up very rapidly on the surface so its thickness cannot be considered as zero. Oxide thickness measurements on both p- and n-type control samples resulted close to 1 nm (p-type: 0.913 nm, n-type: 1.064 nm), so the thickness of the native oxide layer was fixed at 1 nm during the evaluation process.

The applied ellipsometric model consisted of the silicon substrate (optical data from³³), the native oxide layer and the peptide layer.

Based on the results of the absorbance measurements, a dispersion law suitable for transparent materials was used to describe the optical behavior of peptide layers. The Sellmeier-dispersion relation is defined by the following formulas³⁴

$$\varepsilon_1(E) = n^2(E) = \varepsilon_\infty + \sum_{n=1}^2 \frac{A_n}{E_n^2 - E^2} \quad \varepsilon_2(E) = 0$$

It describes the refractive index dispersion, as a function of photon energy (E) of transparent materials by using absorption peaks (poles) outside the investigated spectral range. The curvature of ε_1 is determined by the amplitude (A_n) and by the position (E_n) of the absorption peak while the absolute value can be tuned by adding an offset (ε_∞). In case of application of Sellmeier-dispersion, the Kramers-Kroenig relations, which ensure that the resulting optical properties do not lead to unphysical results, are fulfilled automatically. However, by modeling the optical properties of the peptide layers with Sellmeier dispersion relations, the MSE values remained high, and the measured and fitted curves did not overlap properly (see Supplementary information). This model deals with perfect layers (i.e. layers defined by parallel interfaces and not showing any discontinuity), while proteins, for instance, often aggregate and do not form a continuous layer.³⁵ Therefore, the ellipsometric model was extended with an island-like (patterned) character of the peptide layer. This second model contains again a non-absorbing layer, but it is assumed that the layer does not cover perfectly the substrate. The optical properties of the peptides were modeled in the framework of this patterned layer model again

with Sellmeier dispersion relations. Concerns might arise on the eventual optical anisotropy inside organic multilayers as reported for protein (flagellin) films³⁶ containing chain-like domains, positioned perpendicular to the surface. In our case, the investigated peptides are very small, containing only 12 aminoacids so the formation of fibrous, chain-like structures can be excluded and anisotropy can be neglected during modeling.

To model the partial coverage of the films, the so-called patterned layer tool was applied in the WVASE32 software. In case of a patterned layer the observed polarization change is partially originating from areas where both the top peptide layer and the native oxide underlayer are present, and from areas where there is no peptide. Reflection from different layer structures causes different polarization changes that are averaged within the model. The percentage of the coverage was a fitting parameter during evaluation (the “covered surf.” parameter gives the fraction of the illuminated area where the peptide layer is present). This means that besides thickness and optical properties of the layer the percentage of coverage was also adjusted during the fitting, and after finding the minimal MSE, the model provided these parameters. Since the binding of the peptide layer is weak in the case of n-type substrates, the amount of peptide deposited onto this surface is small as already reported by the Ψ and Δ ellipsometric curves. Therefore, the optical dispersion properties of the peptide layers were fixed at the values observed for the p-type samples during the evaluation of n-type samples, too. The results of the ellipsometric evaluation with the not perfectly covering layer for p- and n-type samples are presented in Table 2 and Figs. 4 and 5. As n and k values were not fitted in the case of n-type samples these are not indicated in the table.

Sample	$n @ 532$ nm	$k @ 532$ nm	covered surf. (%)	MSE	effective thickness (nm)	covered surf. (%)	MSE	effective thickness (nm)
P1	1.52 (0.10)	0.0	30.9 (7.1)	10.3 (5.2)	5.7 (3.5)	2.5 (0.4)	6.2 (0.4)	0.6 (0.1)
P2	1.65 (0.10)	0.0	25.7 (2.4)	14.9 (5.0)	5.8 (1.3)	11.0 (10.4)	9.8 (6.2)	2.1 (2.6)
P3	1.54 (0.02)	0.0	44.7 (3.6)	17.4 (0.7)	10.6 (1.2)	5.1 (0.5)	5.5 (0.5)	1.1 (0.1)
P1-B	1.66 (0.12)	0.0	22.2 (7.4)	5.6 (1.7)	2.8 (1.5)	8.2 (4.9)	4.7 (0.9)	1.3 (1.1)
P3-B	1.63 (0.12)	0.0	36.7 (3.6)	11.4 (4.8)	6.5 (1.2)	4.2 (1.1)	5.7 (0.8)	1.0 (0.4)
PC4	1.56 (0.02)	0.0	36.0 (3.3)	7.0 (0.8)	5.7 (0.6)	5.2 (0.2)	9.9 (5.3)	1.1 (0.1)
			p-type Si				n-type Si	

Table 2: Optical properties, thicknesses of peptide layers and surface coverage obtained from the ellipsometric model. Standard deviation is given in brackets.

By applying the patterned layer model, the mean square error drop to half compared to the previous model (see Supplementary information). The obtained MSE values are reasonable and indicate that the patterned character of the layer improved the modeling significantly. The refractive index dispersion of a typical Sellmeier-layer (for P3 peptide) resulting from this model is presented in Fig. 4. The extinction coefficient is zero by definition. The obtained optical properties are in accordance with literature data, further supporting that the patterned model describes properly the samples.³²

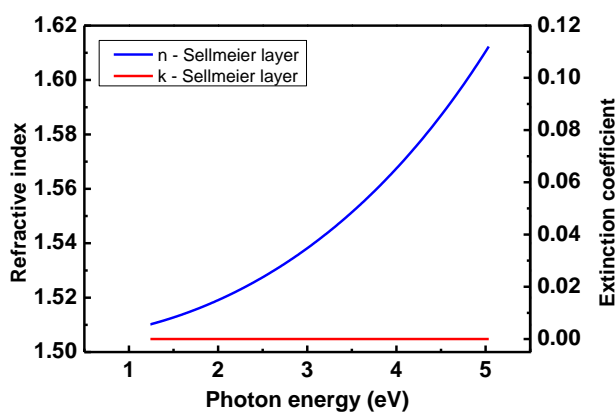


Fig. 4: Refractive index dispersion of the Sellmeier-patterned layer describing P3 peptide. Extinction coefficient is zero by definition.

Taking into consideration the surface coverages that are much lower for n-Si (see table 2.) we can state that peptides generally adsorbed better onto p-type Si. The thicknesses were also obtained on the measured peptide layer patches (data not shown). While in case of a continuous thin film, the film thickness characterizes the amount of the deposited material, in case of the patterned model, a new quantity, the effective film thickness had to be introduced by multiplying the percentage of the covered area by the layer thickness. Naturally, the effective thickness would coincide with the thickness when the percentage of the covered area is 100. These

effective film thicknesses calculated for the different peptides on p-type and n-type silicon substrates are listed in Table 2 and can be seen in Fig. 5. The obtained values indicate also that peptides prefer p-type silicon. In our previous theoretical simulation, we observed the exactly same phenomenon from the perspective of binding affinity in the order from p⁺-specific peptide to n⁺-specific peptide; SPGLSLVSHMQT (P3) > SVSVGMKPSRP (P1) > LLADTTHHRPWT (P2).¹⁸ This indicates that the simulation can be well adopted in studying organic-inorganic interfaces for better designing of high affinity peptides.

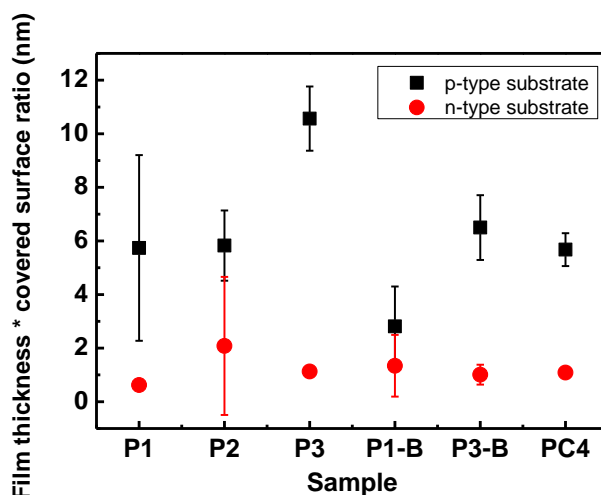


Fig. 5: Effective film thickness of peptide layers adsorbed on p-type (black squares) and n-type silicon substrates (red circles) as determined by ellipsometry

3.3 Atomic force microscopic investigation of the peptide layers

To complement our ellipsometry investigations with morphological information on the peptide layers atomic force microscopy (AFM) was employed. In particular, we used AFM in tapping mode to map simultaneously the shape, height and compositional variations of the adsorbed specific peptides on n-type and p-type Si surfaces. Fig. 6 presents AFM height (panels A, B, C and D), amplitude (panels E, F, G and H) and phase images (panels I, J, K and L) of P1, P2, P3 and PC4 peptides adsorbed on p-type Si surfaces. (For P1-B, P3-B adsorbed on p-type Si surfaces and P1, P2, P3 and PC4 peptides adsorbed on n-type Si surfaces, see supplementary information). Height or topography images enable to estimate both height (z) and lateral (xy) dimensions, thus to estimate peptide coverage of the Si surface. Amplitude images are similar to height images, but they display the shape of the specimen more clearly. They depict the map of

1
2
3 the slope of the sample, showing how the tip is deflected as it encounters sample topography.
4
5 Finally, phase images represent maps of how the phase of the cantilever oscillation is affected by
6
7 its interaction with the surface, enabling compositional variations to be detected, which are
8
9 otherwise unnoticeable in the height or amplitude images. The features depicted in the phase
10
11 images exhibit the compositional variations within the explored area, evidencing the
12
13 corresponding peptide and the Si substrate.

14 From these three types of images there is much information to be derived even without
15
16 processing any quantitative analysis. First, it can be clearly seen that peptides do not form a
17
18 homogeneous layer on the Si surfaces, supporting the applied ellipsometric model. Peptides form
19
20 island-like structures with different lateral dimensions and heights. Phase images clearly
21
22 demonstrate that the areas of larger heights in the topography images correspond to material
23
24 having different composition than the Si surface.
25
26
27
28
29
30
31
32
33
34
35
36
37
38
39
40
41
42
43
44
45
46
47
48
49
50
51
52
53
54
55
56
57
58
59
60

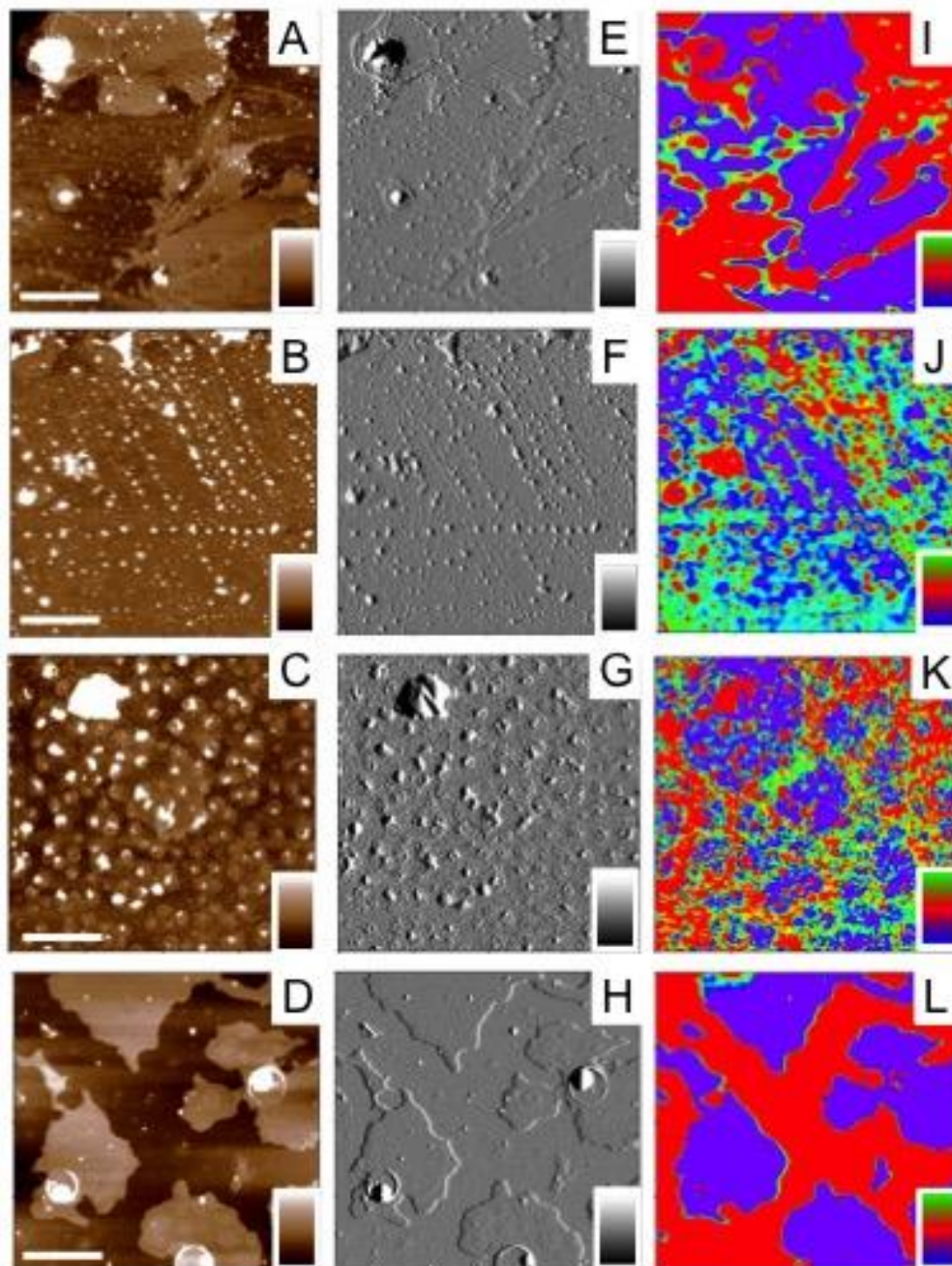


Fig. 6: AFM images: height (panels A, B, C and D), amplitude (panels E, F, G and H) and phase images (panels I, J, K and L) of P1, P2, P3 and PC4 peptides adsorbed on p-type Si surfaces, respectively. Height images enable to estimate both height and peptide coverage of the Si surface. Phase images give qualitative evidence of the compositional variations within the explored area of each sample. Color bars for height images range from 0 to 10 μm , for amplitude images from 0 to 5 nm and for phase images from 0 to 5°. (Scale bars = 5 μm).

Further we performed a detailed and quantitative analysis of height and surface coverage of the peptide films. Fig. 7 depicts corresponding height histograms to Fig. 6 A, B, C and D images. All histograms were fitted using one Gaussian distribution ($R^2 \geq 0.97$), providing the height of the layers formed by P1, P2, P3 and PC4 peptides on p-type Si.

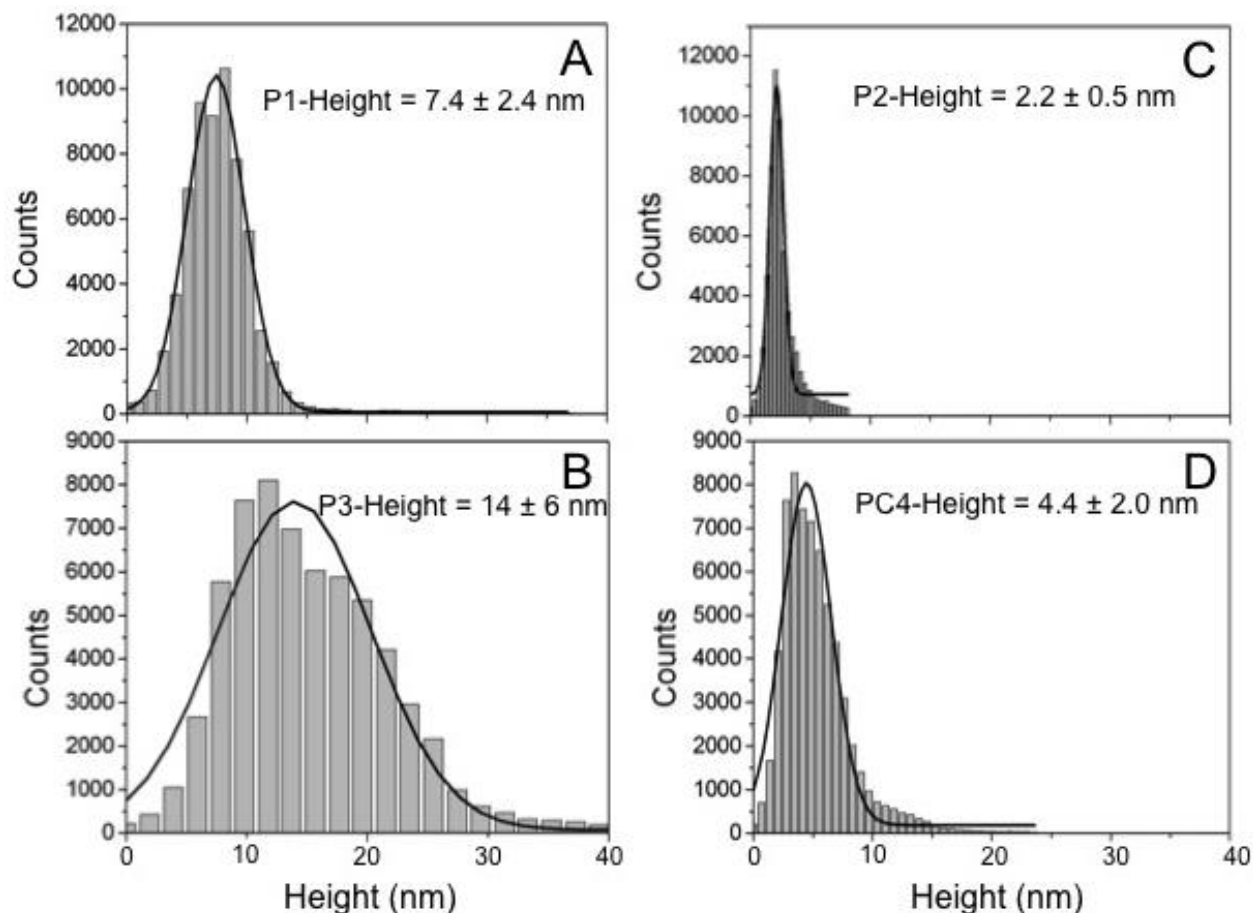


Fig. 7: Peptide layer height distributions on p-Si for P1 (A), P2 (C), P3 (B) and PC4 (D) peptides. Histograms were fitted using one Gaussian distribution. Mean height values are also shown.

Covered surface ratios were also calculated when possible. These values were determined for peptides on p-type surfaces using height images shown in Fig. 6 and for peptides on n-type surfaces using images presented in the supplementary information. As height values were derived by averaging heights obtained on at least three different surfaces, these data indicate the effective thickness (modulated by the surface coverage) of the peptide layers. The results are gathered in Table 3 and the effective thicknesses are also presented in Fig. 8.

Sample	p-type Si		n-type Si	
	effective thickness (nm)	covered surf. (%)	effective thickness (nm)	covered surf. (%)
P1	8.2 (0.8)	33.5	1.9 (0.2)	0.12
P2	3.5 (0.6)	13.1	2.5 (0.4)	0.09
P3	12.0 (1.0)	70.2	2.5 (0.1)	0.8
P1-B	3.3 (0.5)	18.7	2.0 (0.1)	0.32
P3-B	6.6 (0.6)	37.4	2.4 (0.3)	7.3
PC4	5.3 (0.4)	28.6	2.1 (0.3)	1.63
Control thickness (nm)			0.74 (0.07)	

Table 3: Effective thickness of peptide layers and percentage of surface coverage values obtained by AFM.

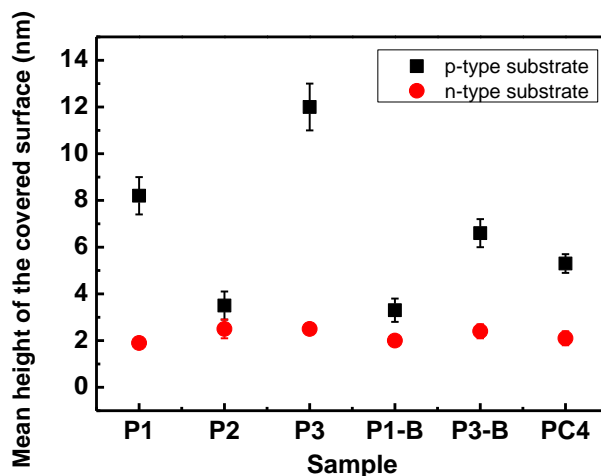


Fig. 8: Effective film thickness of peptide layers formed on p-type (black squares) and n-type silicon substrates (red circles), as obtained from AFM measurements.

The AFM results corroborate the ellipsometric conclusions, i.e. that the investigated peptides bind more effectively to p-type Si than to n-type. The observed surface coverage and film

1
2
3 thickness correlate well with the results of the ellipsometry studies employing the patterned layer
4 model
5

6
7 The effective film thicknesses follow the same tendency as observed in the case of ellipsometry
8 investigations for both substrates (c.f. Figs. 5 and 8). Even though in case of p-type substrate the
9 trends observed in thickness and coverage are similar for both AFM and ellipsometry results (c.f.
10 Tables 2 and 3), the strict comparison of the results is not trivial as the ellipsometer measures
11 regions much larger than those scanned by the AFM. In case of n-type substrates, such direct
12 comparison of thickness and coverage does not reveal similarities since the amount of deposited
13 material is so small that the optical data had to be fixed accompanied by increased uncertainty in
14 the results. However, the effective thickness values in these cases can still be used to compare
15 the results of the two measurement techniques. The peptides adsorb in very thin layers on n-type
16 Si with a maximum of about 2.5 nm for P2 peptide, whereas they form thick layers on p-type Si
17 up to about 12 nm for the P3 peptide, suggesting a multilayer assembling of these very small,
18 sub-nanometric sized 12-mer peptides on the surface. Similar multilayer formation has been
19 reported for peptide-mineral systems.³⁷ Authors proposed that the formation of a monolayer of
20 peptide requires the peptide concentration ranging from 0.05 to 0.2 μM depending on peptide
21 orientation. We have used higher, 20 μM peptide concentration solutions for our experiment, the
22 same as in our previous studies to get good detection limit for biosensing applications. The
23 formation of the patched peptide islands indicates the different affinity of the studied peptides
24 towards the p-type Si surface.
25
26
27
28
29
30
31
32
33
34
35
36
37
38
39
40
41

42 **Conclusions**

43
44 In this work, the adhesion differences of specific peptides to n- and p-type silicon have been
45 investigated using spectroscopic ellipsometry. Since ellipsometry is an indirect characterization
46 technique, AFM was also applied to support our findings. It was shown experimentally that
47 binding of the investigated peptides is more effective in the case of p-type Si substrates, as
48 expected from previous theoretical findings.¹⁸ We've proved that in cases when only the
49 differences between the binding properties of several peptides are addressed, ellipsometry can
50 provide valuable information even without evaluating the recorded data, just by comparing the Ψ
51 and Δ difference curves. It was presented that, if the amount of the deposited material is large
52
53
54
55
56
57
58
59
60

1
2
3 enough (effective thickness exceeding ~5 nm), ellipsometry combined with patterned modeling
4 can provide the optical properties, thickness and surface coverage of peptide layers. Furthermore,
5 in cases when there is just a little adsorbed material, as for the n-type substrates, where the
6 optical properties cannot be deduced, ellipsometry can still be used to determine the effective
7 thickness of the films.
8

9
10
11 The presented results corroborate our previous theoretical findings¹⁸ and also the the
12 experimentally determined binding efficiency of Si adhering peptides.²⁹ Collectively, these
13 results provide several meaningful parameters that play a critical role in peptide binding to Si.
14 These data can be valuable when accurate hybrid force fields need to be developed for molecular
15 dynamics studies of silicon-peptide hybrid materials.
16
17
18
19
20
21
22

23 Our work presents an evidence for spontaneous peptide multilayer assembly. Numerous are the
24 papers reporting characterization of peptide self-assembly in the bulk solution, but much less
25 work has been published on the interfacial self-assembly of short peptides in the vicinity of a
26 planar surface. The advantage of short peptides is their ability to self-assembly to form various
27 nanostructures that are attractive to many technological applications. Due to their structural
28 complementarities, peptides adsorb and self-assemble at planar interfaces via electrostatic
29 interactions, hydrogen bonding and hydrophobic effects.¹⁴ Anchoring various biomolecules
30 through self-assembled peptides onto silicon might found promising applications when devices
31 incorporating biological functionality are engineered.
32
33
34
35
36
37
38
39
40
41

42 ASSOCIATED CONTENT

43
44 **Supporting Information.** Supplementary figures. This material is available free of charge via
45 the Internet at <http://pubs.acs.org>.
46
47
48
49
50

51 AUTHOR INFORMATION

52 **Corresponding Author**

53
54
55
56 Csilla Gergely
57
58
59
60

1
2
3 #To whom correspondence should be addressed. Csilla.gergely@univ-montp2.fr
4
5

6 **Author Contributions**

7
8
9 The manuscript was written through contributions of all authors. All authors have given approval
10 to the final version of the manuscript.
11
12

13 **Funding Sources**

14
15 Any funds used to support the research of the manuscript should be placed here (per journal
16 style).
17
18
19

20 **ACKNOWLEDGMENT**

21
22 We are grateful for the financial support offered by the CNRS/MTA cooperation project Nr.
23 26126.
24
25
26
27
28
29
30
31

32 **ABBREVIATIONS**

33 AFM, atomic force microscopy; BSA, bovine serum albumin; LC/MS, liquid chromatography–
34 mass spectrometry; NMR, nuclear magnetic resonance; PBST, phosphate buffered saline with
35 Tween; SPPS, solid phase peptide synthesis.
36
37
38
39
40

41 **REFERENCES**

- 42
43
44 1. Chiu, C. Y.; Li, Y.; Ruan, L.; Ye, X.; Murray, C. B.; Huang, Y. Platinum nanocrystals
45 selectively shaped using facet-specific peptide sequences. *Nat Chem* 2011, 3, 393-9.
46
47 2. Song, T.; Lee, S. T.; Sun, B. Q. Silicon nanowires for photovoltaic applications: The
48 progress and challenge. *Nano Energy* 2012, 1, 654-673.
49
50 3. Sanchez, C.; Julian, B.; Belleville, P.; Popall, M. Applications of hybrid organic-inorganic
51 nanocomposites. *Journal of Materials Chemistry* 2005, 15, 3559-3592.
52
53 4. Neiner, D.; Kauzlarich, S. M. Hydrogen-Capped Silicon Nanoparticles as a Potential
54 Hydrogen Storage Material: Synthesis, Characterization, and Hydrogen Release. *Chemistry
55 of Materials* 2010, 22, 487-493.
56
57
58
59
60

- 1
2
3 5. Bogart, T. D.; Lu, X.; Korgel, B. A. Precision synthesis of silicon nanowires with crystalline
4 core and amorphous shell. *Dalton Trans* 2013, 42, 12675-80.
- 6
7 6. Harraz, F. A. Porous silicon chemical sensors and biosensors: A review. *Sensors and*
8 *Actuators B-Chemical* 2014, 202, 897-912.
- 9
10 7. Nel, A.; Xia, T.; Madler, L.; Li, N. Toxic potential of materials at the nanolevel. *Science*
11 2006, 311, 622-7.
- 12
13
14 8. Estephan, E.; Saab, M. B.; Agarwal, V.; Cuisinier, F. J. G.; Larroque, C.; Gergely, C.
15 Peptides for the Biofunctionalization of Silicon for Use in Optical Sensing with Porous
16 Silicon Microcavities. *Advanced Functional Materials* 2011, 21, 2003-2011.
- 17
18
19 9. de Jonge, L. T.; Leeuwenburgh, S. C. G.; Wolke, J. G. C.; Jansen, J. A. Organic-Inorganic
20 Surface Modifications for Titanium Implant Surfaces. *Pharmaceutical Research* 2008, 25,
21 2357-2369.
- 22
23
24 10. Pantarotto, D.; Partidos, C. D.; Graff, R.; Hoebeke, J.; Briand, J.-P.; Prato, M.; Bianco, A.
25 Synthesis, Structural Characterization, and Immunological Properties of Carbon Nanotubes
26 Functionalized with Peptides. *Journal of the American Chemical Society* 2003, 125, 6160-
27 6164.
- 28
29
30 11. Schwemmer, T.; Baumgartner, J.; Faivre, D.; Börner, H. G. Peptide-Mediated
31 Nanoengineering of Inorganic Particle Surfaces: A General Route toward Surface
32 Functionalization via Peptide Adhesion Domains. *Journal of the American Chemical*
33 *Society* 2012, 134, 2385-2391.
- 34
35
36 12. Seker, U. O.; Demir, H. V. Material binding peptides for nanotechnology. *Molecules* 2011,
37 16, 1426-51.
- 38
39
40 13. Brown, S. Metal-recognition by repeating polypeptides. *Nature biotechnology* 1997, 15,
41 269-72.
- 42
43
44 14. Oren, E. E.; Tamerler, C.; Sarikaya, M. Metal recognition of septapeptides via polypod
45 molecular architecture. *Nano letters* 2005, 5, 415-9.
- 46
47
48 15. Ramakrishnan, S. K.; Martin, M.; Cloitre, T.; Firlej, L.; Cuisinier, F. J.; Gergely, C. Insights
49 on the facet specific adsorption of amino acids and peptides toward platinum. *J Chem Inf*
50 *Model* 2013, 53, 3273-9.
- 51
52
53 16. Ramakrishnan, S. K.; Martin, M.; Cloitre, T.; Firlej, L.; Gergely, C. Design rules for metal
54 binding biomolecules: understanding of amino acid adsorption on platinum crystallographic
55 facets from density functional calculations. *Physical chemistry chemical physics : PCCP*
56 2015, 17, 4193-8.
- 57
58
59
60

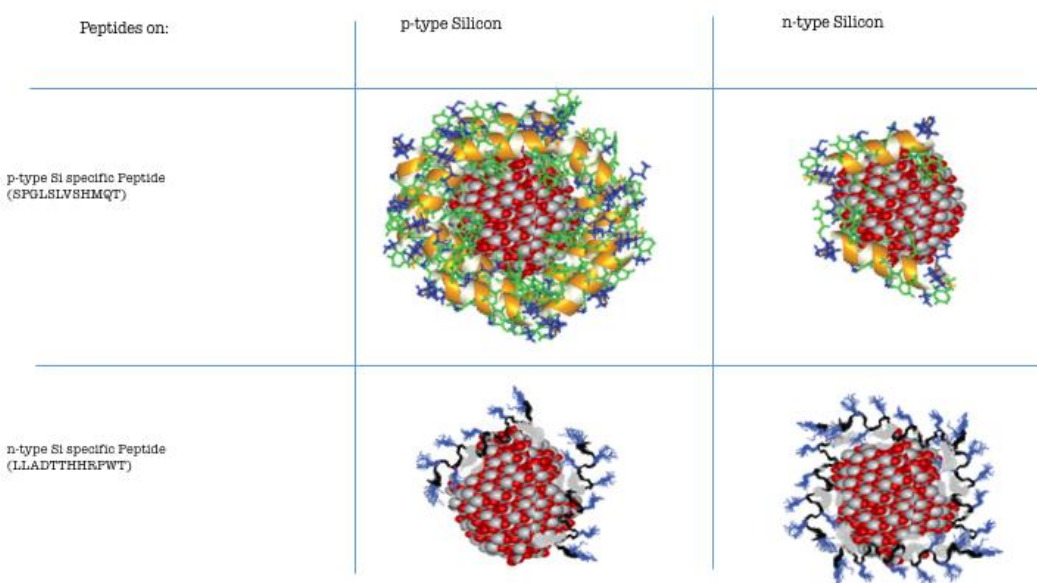
17. Heinz, H.; Farmer, B. L.; Pandey, R. B.; Slocik, J. M.; Patnaik, S. S.; Pachter, R.; Naik, R. R. Nature of molecular interactions of peptides with gold, palladium, and Pd-Au bimetal surfaces in aqueous solution. *Journal of the American Chemical Society* 2009, 131, 9704-14.
18. Ramakrishnan, S. K.; Martin, M.; Cloitre, T.; Firlej, L.; Gergely, C. Molecular mechanism of selective binding of peptides to silicon surface. *J Chem Inf Model* 2014, 54, 2117-26.
19. Tangney, P.; Scandolo, S. An ab initio parametrized interatomic force field for silica. *The Journal of chemical physics* 2002, 117, 8898.
20. Lopes, P. E. M.; Murashov, V.; Tazi, M.; Demchuk, E.; MacKerell, A. D. Development of an Empirical Force Field for Silica. Application to the Quartz–Water Interface. *The Journal of Physical Chemistry B* 2006, 110, 2782-2792.
21. Kermode, J. R.; Cereda, S.; Tangney, P.; Vita, D. A. A first principles based polarizable O(N) interatomic force field for bulk silica. *The Journal of chemical physics* 2010, 133, 94102.
22. Cruz-Chu, E. R.; Aksimentiev, A.; Schulten, K. Water-silica force field for simulating nanodevices. *J Phys Chem B* 2006, 110, 21497-508.
23. Garcia-Caurel, E.; Drevillon, B.; De Martino, A.; Schwartz, L. Application of Fourier transform infrared ellipsometry to assess the concentration of biological molecules. *Appl Opt* 2002, 41, 7339-45.
24. Schaferling, M.; Nagl, S. Optical technologies for the read out and quality control of DNA and protein microarrays. *Anal Bioanal Chem* 2006, 385, 500-17.
25. Hinrichs, K.; Gensch, M.; Esser, N. Analysis of organic films and interfacial layers by infrared spectroscopic ellipsometry. *Appl Spectrosc* 2005, 59, 272-82.
26. Mikhaylova, Y.; Ionov, L.; Rappich, J.; Gensch, M.; Esser, N.; Minko, S.; Eichhorn, K.-J.; Stamm, M.; Hinrichs, K. In Situ Infrared Ellipsometric Study of Stimuli-Responsive Mixed Polyelectrolyte Brushes. *Analytical Chemistry* 2007, 79, 7676-7682.
27. Kang, S.; Prabhu, V. M.; Soles, C. L.; Lin, E. K.; Wu, W.-I. Methodology for Quantitative Measurements of Multilayer Polymer Thin Films with IR Spectroscopic Ellipsometry. *Macromolecules* 2009, 42, 5296-5302.
28. Bachmann, M.; Goede, K.; Sickinger, A. G.; Grundmann, M.; Irbäck, A.; Janke, W. Microscopic mechanism of specific peptide adhesion to semiconductor substrates. *Angewandte Chemie International Edition* 2010, 49, 9530-9533.
29. Ramakrishnan, S. K.; Jebors, S.; Martin, M.; Cloitre, T.; Agarwal, V.; Mehdi, A.; Martinez, J.; Subra, G.; Gergely, C. Engineered Adhesion Peptides for Improved Silicon Adsorption. *Langmuir : the ACS journal of surfaces and colloids* 2015, 31, 11868-74.

- 1
 - 2
 - 3
 - 4
 - 5
 - 6
 - 7
 - 8
 - 9
 - 10
 - 11
 - 12
 - 13
 - 14
 - 15
 - 16
 - 17
 - 18
 - 19
 - 20
 - 21
 - 22
 - 23
 - 24
 - 25
 - 26
 - 27
 - 28
 - 29
 - 30
 - 31
 - 32
 - 33
 - 34
 - 35
 - 36
 - 37
 - 38
 - 39
 - 40
 - 41
 - 42
 - 43
 - 44
 - 45
 - 46
 - 47
 - 48
 - 49
 - 50
 - 51
 - 52
 - 53
 - 54
 - 55
 - 56
 - 57
 - 58
 - 59
 - 60
30. Woollam, J. A.; Johs, B. D.; Herzinger, C. M. Overview of variable-angle spectroscopic ellipsometry (VASE): I. Basic theory and typical applications. *Proceedings of SPIE, CR72*, 1999.
31. Fujiwara, H. *Spectroscopic Ellipsometry*. John Wiley & Sons, Ltd: Chichester, UK, 2007.
32. Arwin, H. *Adsorption of Proteins at Solid Surfaces*. Springer-Verlag Berlin Heidelberg: 2014; p 29-46.
33. Herzinger, C. M.; Johs, B.; McGahan, W. A.; Woollam, J. A.; Paulson, W. Ellipsometric determination of optical constants for silicon and thermally grown silicon dioxide via a multi-sample, multi-wavelength, multi-angle investigation. *Journal of Applied Physics* 1998, 83, 3323.
34. JA, W. *Guide to Using WVASE32*. J. A. Woollam Co., Inc: 2010.
35. Ruso, J. M.; Pineiro, A. *Proteins in Solution and at Interfaces: Methods and Applications in Biotechnology and Materials Science*; 1 edition ed.; Wiley: 2013.
36. Kovacs, N.; Patko, D.; Orgovan, N.; Kurunczi, S.; Ramsden, J. J.; Vonderviszt, F.; Horvath, R. Optical Anisotropy of Flagellin Layers: In Situ and Label-Free Measurement of Adsorbed Protein Orientation Using OWLS. *Analytical Chemistry* 2013, 85, 5382-5389.
37. Patwardhan, S. V.; Emami, F. S.; Berry, R. J.; Jones, S. E.; Naik, R. R.; Deschaume, O.; Heinz, H.; Perry, C. C. Chemistry of aqueous silica nanoparticle surfaces and the mechanism of selective peptide adsorption. *Journal of the American Chemical Society* 2012, 134, 6244-56.

1
2
3
4
5
6 Insert Table of Contents Graphic and Synopsis Here
7
8

9 Interactions at the peptide/silicon surfaces – Evidence of peptide multilayer assembly

10
11 Zsuzsanna Pápa, Sathish Kumar Ramakrishan, Marta Martin, Thierry Cloitre, László Zimányi,
12 Jessica Márquez, Judit Budai, Zsolt Toth, Csilla Gergely
13
14
15
16
17
18



19
20
21
22
23
24
25
26
27
28
29
30
31
32
33
34
35
36
37
38 Schema on differential adsorption of specific adhesion peptides on p-, and n-type silicon.
39
40
41
42
43
44
45
46
47
48
49
50
51
52
53
54
55
56
57
58
59
60