



**HAL**  
open science

**The type III effector RipAX2 confers avirulence of  
[i]Ralstonia solanacearum[/i] to the eggplant AG91-25,  
carrying the resistance gene Ers1**

Jérémy Guinard, Keke Wang, Fabien Lonjon, Lakshmi Sujeeun, Marco E.  
Mechan Llontop, Anne-Claire Noel, Patrick Barberis, Stéphane Genin,  
Marie-Christine Brand-Daunay, Jacques Dintinger, et al.

► **To cite this version:**

Jérémy Guinard, Keke Wang, Fabien Lonjon, Lakshmi Sujeeun, Marco E. Mechan Llontop, et al.. The type III effector RipAX2 confers avirulence of [i]Ralstonia solanacearum[/i] to the eggplant AG91-25, carrying the resistance gene Ers1. 6. International Bacterial Wilt Symposium (IBWS), Jul 2016, Toulouse, France. hal-01343635

**HAL Id: hal-01343635**

**<https://hal.science/hal-01343635>**

Submitted on 5 Jun 2020

**HAL** is a multi-disciplinary open access archive for the deposit and dissemination of scientific research documents, whether they are published or not. The documents may come from teaching and research institutions in France or abroad, or from public or private research centers.

L'archive ouverte pluridisciplinaire **HAL**, est destinée au dépôt et à la diffusion de documents scientifiques de niveau recherche, publiés ou non, émanant des établissements d'enseignement et de recherche français ou étrangers, des laboratoires publics ou privés.

# The type III effector RipAX2 confers avirulence of *Ralstonia solanacearum* to the eggplant AG91-25, carrying the resistance gene Ers1

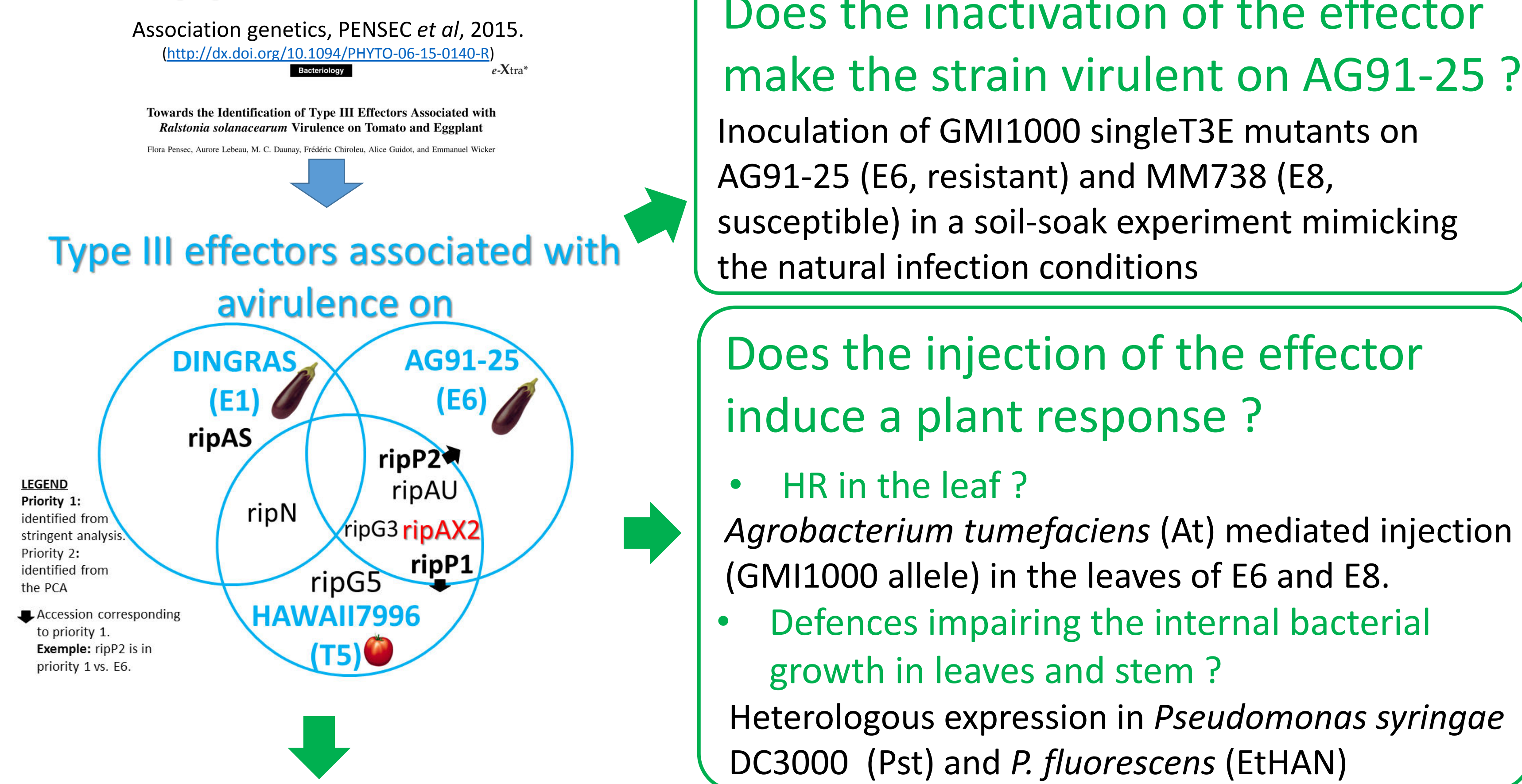


- Among Solanaceae, highest bacterial wilt-resistance levels have been observed in eggplant.
- The resistance of AG91-25 is conferred by a combination of the major locus Ers1 and QTLs (talk S. Salgon, session 4).
- To decipher the molecular basis governing *R. solanacearum*-eggplant interactions, we investigated the contribution of type III effectors to the avirulence to AG91-25.
- We present the first results on the avirulence function of RipAX2, a Zn-dependant protease.

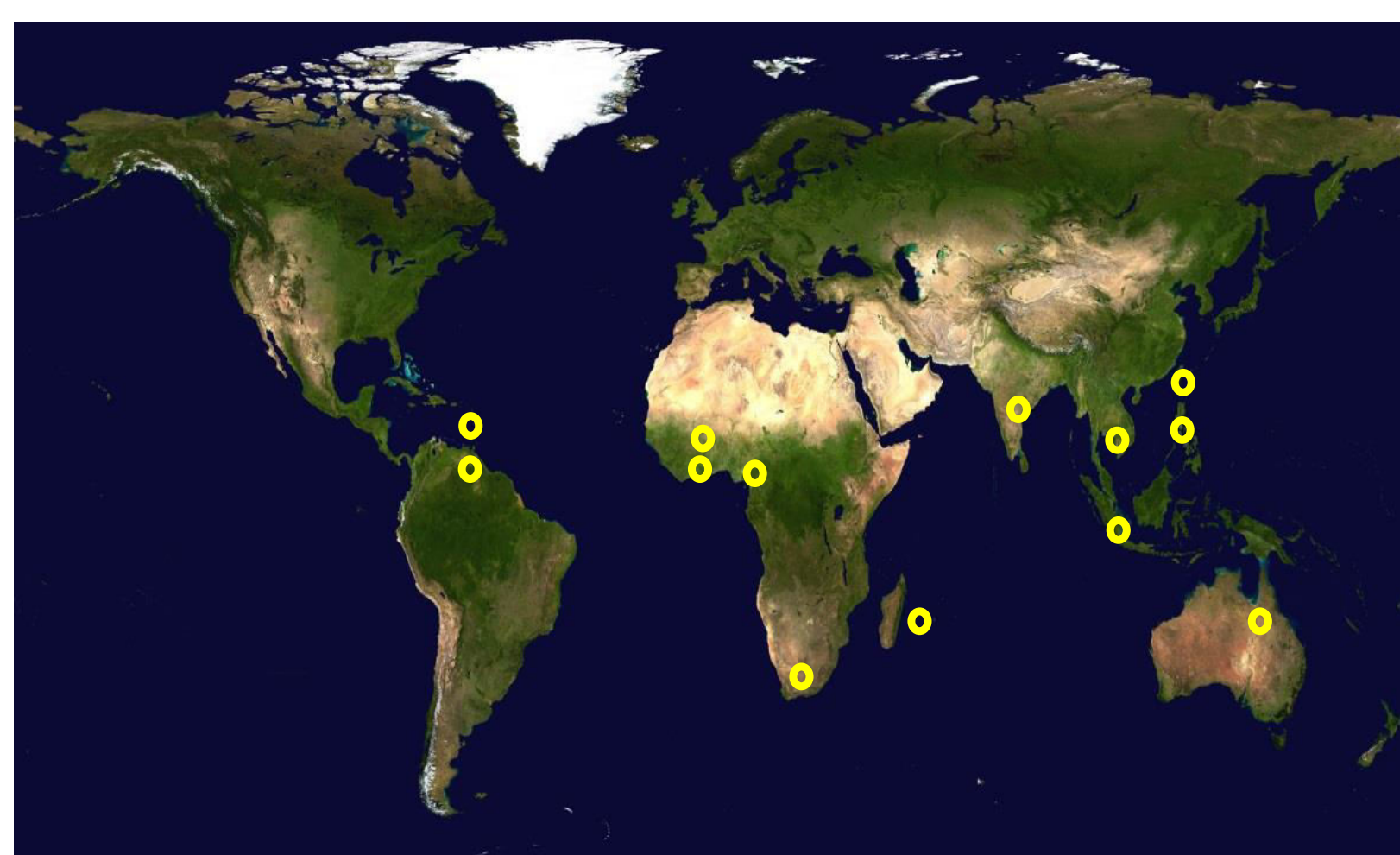
Jérémy GUINARD<sup>1,2</sup>, Keke WANG<sup>3</sup>, Fabien LONJON<sup>3</sup>, Lakshmi SUJEEUN<sup>1</sup>, Marco E. MECHAN LLONTOP<sup>4</sup>, Anne-Claire CAZALE<sup>3</sup>, Patrick BARBERIS<sup>3</sup>, Stéphane GENIN<sup>3</sup>, Marie-Christine DAUNAY<sup>5</sup>, Jacques DINTINGER<sup>1</sup>, Stéphane POUSSIER<sup>2</sup>, Boris VINATZER<sup>4</sup>, Nemo PEETERS<sup>3</sup>, Emmanuel WICKER<sup>1</sup>

<sup>1</sup>CIRAD, UMR PVBMT, Saint Pierre, Reunion Isl., France; <sup>2</sup>Université de la Réunion, UMR PVBMT, Saint Denis, Reunion Isl., France; <sup>3</sup>LIPM, Université de Toulouse, INRA, CNRS, Castanet-Tolosan, France; <sup>4</sup>Virginia Tech, Department PPPWS, Blacksburg, VA, USA; <sup>5</sup>INRA, UR1052, Avignon-Montfavet, France

## The approach



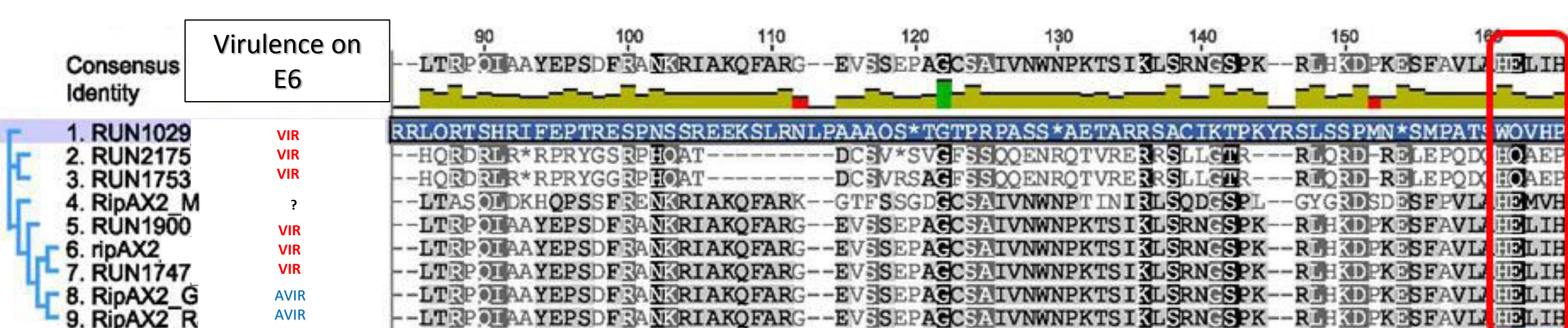
## What is the effector prevalence and allelic diversity in natural pathogen populations ? Is avirulence conferred by specific alleles ?



- 91 strains from 13 geographical locations
  - phylotype I (66) , IIA (9), IIB (10), III (6)
- Virulence phenotyping on E6 and E8 by soil-soak experiment (28 days, 30°C day /24°C night): 69 strains
- Full-length PCR and sequencing, including the upstream promoter region
- 9 complete genomic sequences, phylotype I and III (Guinard et al 2016, Genome Announcements; doi: [10.1128/genomeA.01415-15](https://doi.org/10.1128/genomeA.01415-15))

## 3. RipAX2-eggplant E6 : a different story than with *Solanum torvum*

- The critical residue for avirulence to *S. torvum* is E<sub>149</sub>, within the putative Zinc-binding motif HExxH).
- In E6 -avirulent (GMI1000, RS1000) AND virulent strains, E<sub>149</sub> and the HELIH motif are conserved.



## 4. RipAX2 is highly prevalent in Rs natural populations

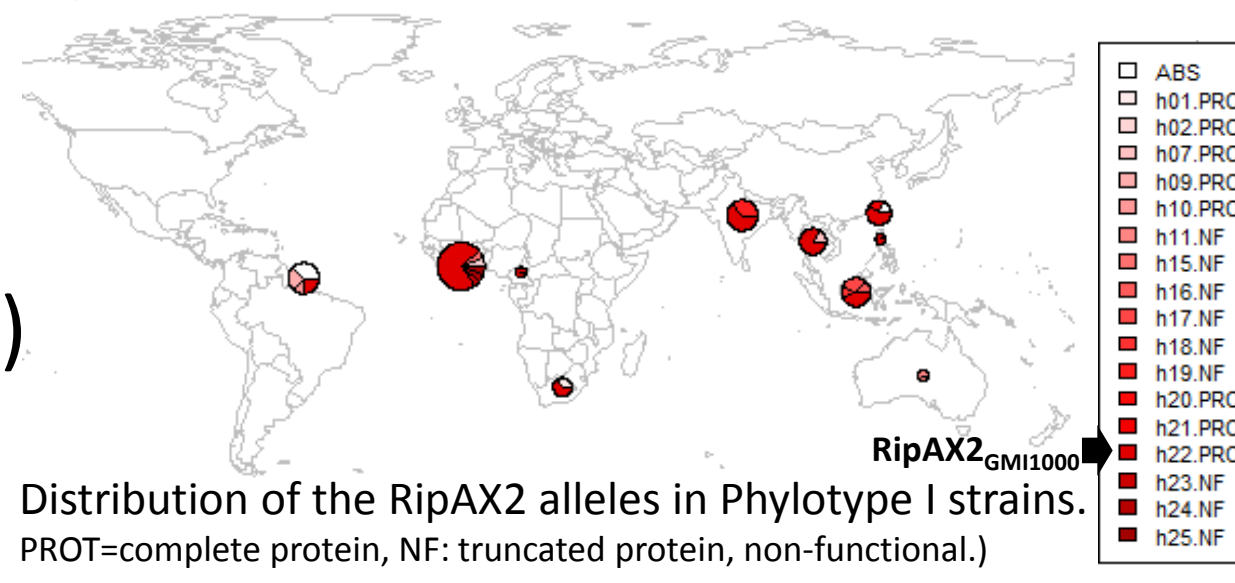
- Significantly more present in phylotype I, preferentially absent in phylotype II.

26 alleles

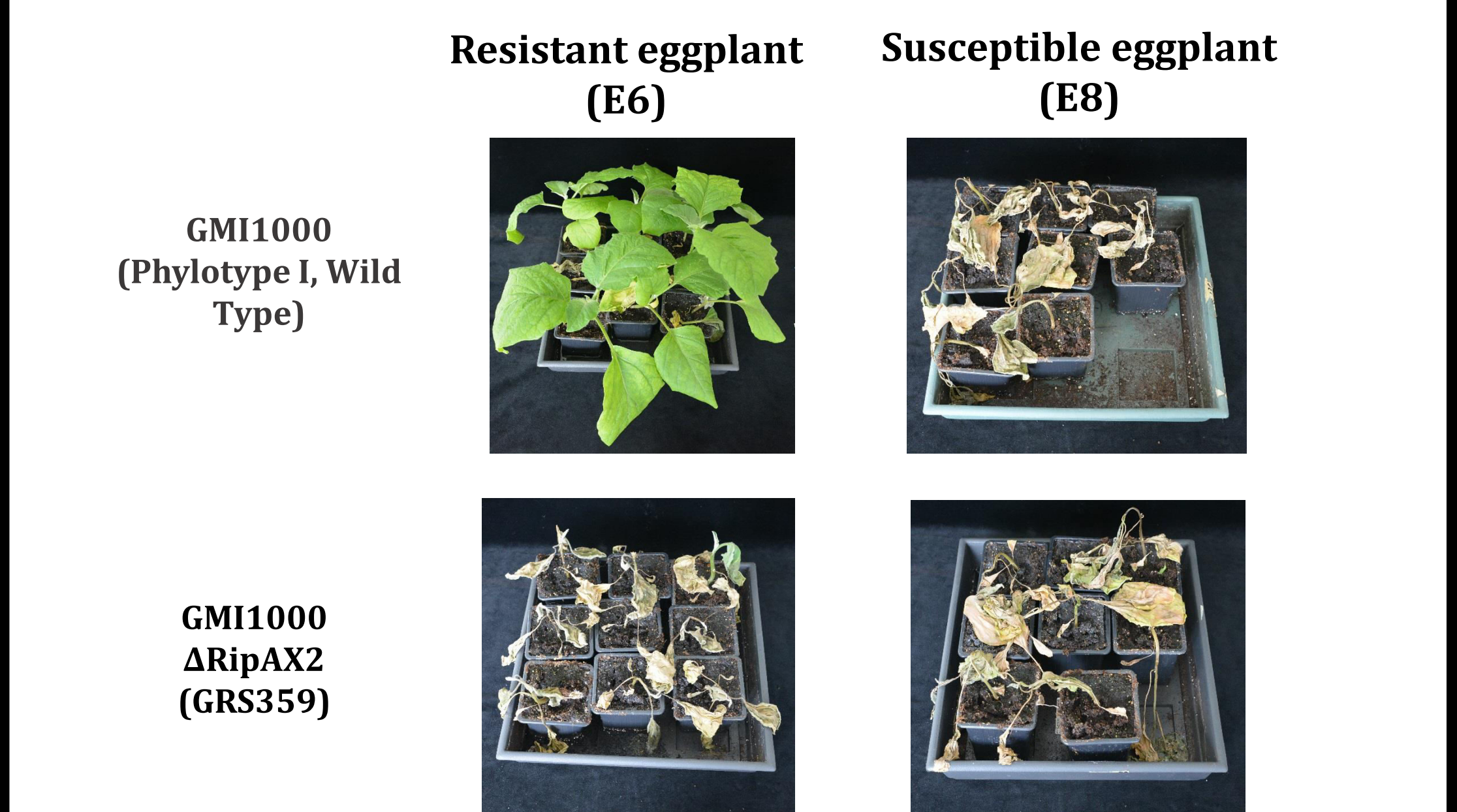
- One dominant allele: RipAX2<sub>GMI1000</sub> (60.3%)
  - present in I, IIA, IIB
- Allelic richness: Asia (8) > Africa (7) > South America (4) > Indian Ocean (1)
- 13 truncated proteins

Phylotype	Abs	Pres	Total	χ <sup>2</sup>
I	4	62	66	***
IIA	5	4	9	**
IIB	7	3	10	***
III	2	4	6	NS
Total	18	73	91	

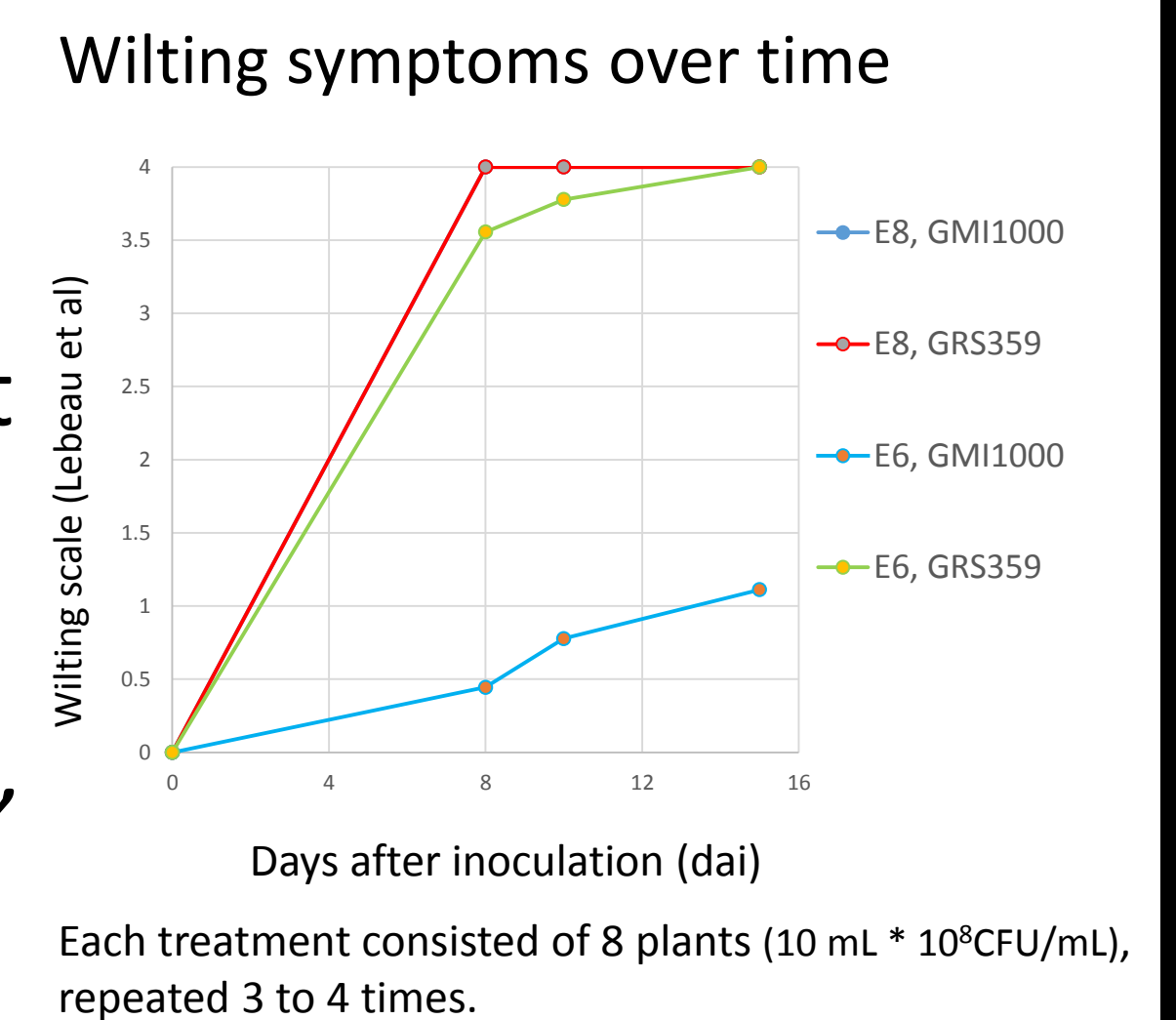
χ<sup>2</sup> \*\*\* NS



## 1. RipAX2 is strongly involved in the control of GMI1000 by AG91-25



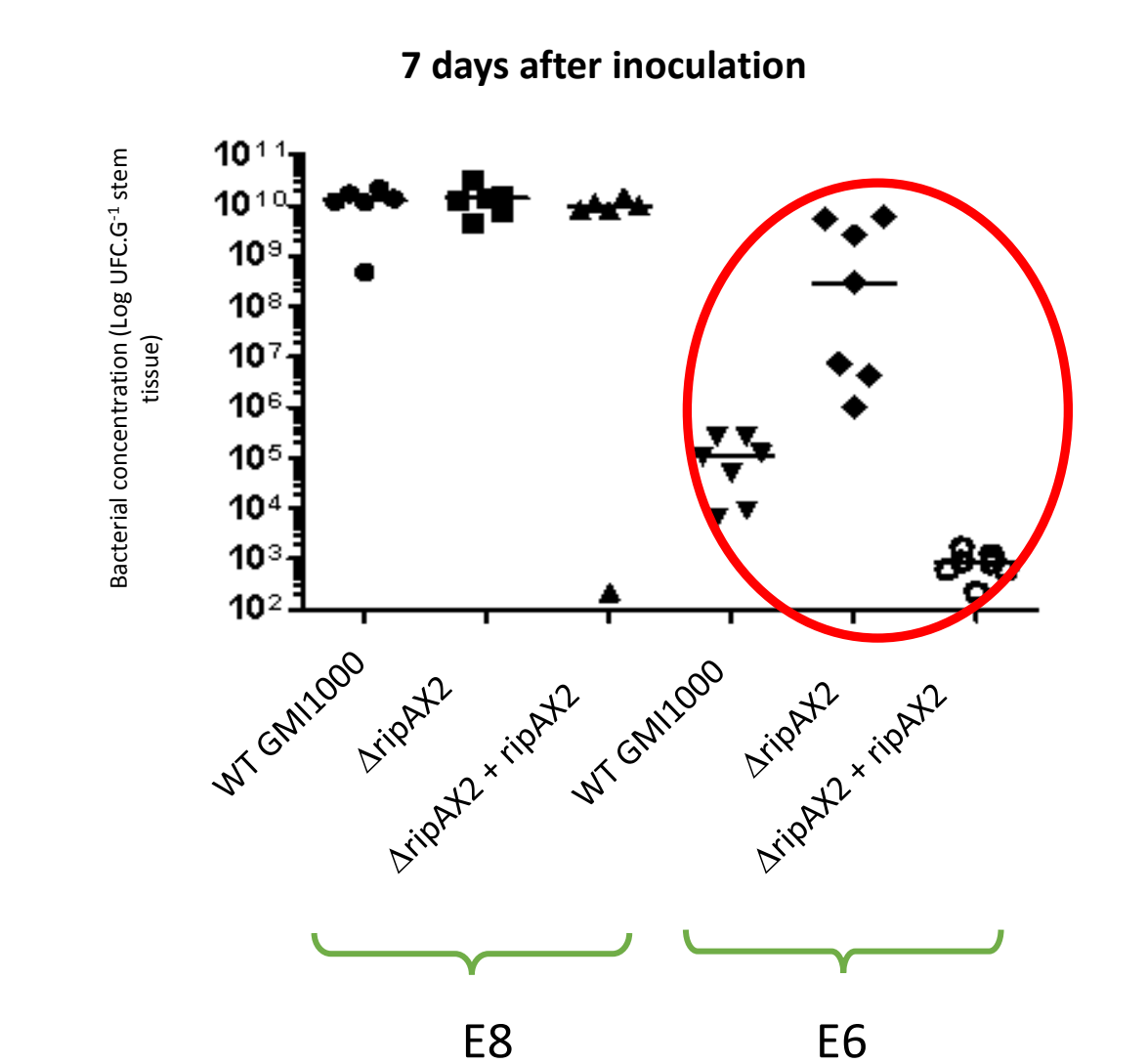
- 15 effector mutants were tested.
- The ΔRipAX2 mutant was virulent to AG91-25.
- RipAX2 induces HR on *Solanum torvum*, a wild relative of eggplant (Nahar et al, 2014)



## 2. RipAX2 does not induce HR in leaves, and may be recognized in the stem

Leaf infiltration of RipAX2-expressing At and Pst does not trigger E6 resistance

In E6 stem, RipAX2 induces a 4 magnitude-decrease of the bacterial load.



An organ-specific control of GMI1000 by AG91-25 ?

## 5. Alleles vs virulence: an ongoing study

No alleles	Protein	Phenotype on E6 (No strains)	
		Avirulent	Virulent
1	ABSENTE	7	10
13	Functional	31	8
13	Truncated	9	4
Total		47	22

• 3 functional alleles associated with virulence

• Strains carrying the GMI1000 allele are not all avirulent

Phenotype on E6 (No strains)	
Avirulent	Virulent
25	5

We identified three potential strategies for Rs to bypass E6 resistance: (i) gene deletion, (ii) pseudogenisation, (iii) modification of the promoting regions. Deeper functional analyses are needed.

## Acknowledgements

Sylvain LEBON, Jean-Michel BAPTISTE, Fanny MAILLOT, Edith LALLEMAND-MAMOSAS, Marie TERVILLE, Frédéric CHIROLEU

