



HAL
open science

Post-entry blockade of small ruminant lentiviruses by wild ruminants

Leticia Sanjosé, Helena Crespo, Laure Blatti-Cardinaux, Idoia Glaria, Carlos Martínez-Carrasco, Eduardo Berriatua, Beatriz Amorena, Damián de Andrés, Giuseppe Bertoni, Ramses Reina

► To cite this version:

Leticia Sanjosé, Helena Crespo, Laure Blatti-Cardinaux, Idoia Glaria, Carlos Martínez-Carrasco, et al.. Post-entry blockade of small ruminant lentiviruses by wild ruminants. *Veterinary Research*, 2016, 47 (1), pp.1. <10.1186/s13567-015-0288-7>. <hal-01341453>

HAL Id: hal-01341453

<https://hal.science/hal-01341453v1>

Submitted on 4 Jul 2016

HAL is a multi-disciplinary open access archive for the deposit and dissemination of scientific research documents, whether they are published or not. The documents may come from teaching and research institutions in France or abroad, or from public or private research centers.

L'archive ouverte pluridisciplinaire **HAL**, est destinée au dépôt et à la diffusion de documents scientifiques de niveau recherche, publiés ou non, émanant des établissements d'enseignement et de recherche français ou étrangers, des laboratoires publics ou privés.



HAL Authorization

RESEARCH ARTICLE

Open Access



Post-entry blockade of small ruminant lentiviruses by wild ruminants

Leticia Sanjosé¹, Helena Crespo¹, Laure Blatti-Cardinaux³, Idoia Glaria¹, Carlos Martínez-Carrasco², Eduardo Berriatua², Beatriz Amorena¹, Damián De Andrés¹, Giuseppe Bertoni³ and Ramses Reina^{1*}

Abstract

Small ruminant lentivirus (SRLV) infection causes losses in the small ruminant industry due to reduced animal production and increased replacement rates. Infection of wild ruminants in close contact with infected domestic animals has been proposed to play a role in SRLV epidemiology, but studies are limited and mostly involve hybrids between wild and domestic animals. In this study, SRLV seropositive red deer, roe deer and mouflon were detected through modified ELISA tests, but virus was not successfully amplified using a set of different PCRs. Apparent restriction of SRLV infection in cervids was not related to the presence of neutralizing antibodies. In vitro cultured skin fibroblastic cells from red deer and fallow deer were permissive to the SRLV entry and integration, but produced low quantities of virus. SRLV got rapidly adapted in vitro to blood-derived macrophages and skin fibroblastic cells from red deer but not from fallow deer. Thus, although direct detection of virus was not successfully achieved in vivo, these findings show the potential susceptibility of wild ruminants to SRLV infection in the case of red deer and, on the other hand, an in vivo SRLV restriction in fallow deer. Altogether these results may highlight the importance of surveilling and controlling SRLV infection in domestic as well as in wild ruminants sharing pasture areas, and may provide new natural tools to control SRLV spread in sheep and goats.

Introduction

In the last century we have witnessed the emergence of acquired immunodeficiency syndrome, multidrug-resistant tuberculosis and tick-borne related diseases as a result of the interactions between humans and zoonotic pathogens in a pathway including wildlife and domestic animals [1].

Small ruminant lentiviruses (SRLV) infection is present in sheep and goats from Europe [2], America [3–5], Australia [6], Africa [7] and Asia [8, 9]. Economic impact of SRLV infection, highly dependent on environmental factors, breed/individual susceptibility, production system, farming practices and age of culling is often underestimated and still under study [10]. The premature removal of infected animals and the consequent increased replacement rate is a major consequence of SRLV infection. SRLV infected sheep have shown decreased fertility

and number of lambs per birth, as well as a reduction of birth weight and weight gain from birth to weaning [11, 12]. Animals with advanced disease present a significantly reduced body weight at slaughter, and their carcass may not qualify for human consumption [13]. The most obvious positive result observed following the eradication of SRLV infections in goats' herds is the disappearance of clinical cases of carpal arthritis and the improved health of the flocks [10]. This combined with the elimination of a viral infection showing a negative impact on milk production [14–16] may well explain the financial success of a combined eradication campaign comprising SRLV, such as "The Norwegian Healthier Goats program" [17].

SRLV are able to cross inter-species barrier thereby infecting sheep and goats through horizontal and lactogenic routes [10]. Since the first descriptions of natural transmissions of Visna Maedi virus (VMV) to goats, or Caprine arthritis encephalitis virus (CAEV) to sheep [18], many research groups have reported cross-species transmission in different countries [19–21]. Recently,

*Correspondence: ramses.reina@unavarra.es

¹ Instituto de Agrobiotecnología (CSIC-Universidad Pública de Navarra-Gobierno de Navarra), Avda, Pamplona, 123, 31192 Mutilva-Navarra, Spain
Full list of author information is available at the end of the article

new genotypes, subtypes and recombinant SRLV viruses have been described widening significantly their genetic and antigenic heterogeneity, likely conferring them a wider spectrum of cell and host tropism. *Env* and LTR genomic regions have been related to cell tropism by modifying the receptor usage [22] or by enhancing the promoter activity depending on the transcription factors present in a particular cell type, respectively [23]. Typically, the virus exists in the infected host as a continuum of related but divergent genetic variants called quasispecies that compartmentalize in different tissues or body fluids [24, 25] potentially favoring cross-species transmission.

The transmission of infectious agents from reservoir animal populations, often from domesticated species to wildlife in shared pastures or breeding areas (spill-over), may lead to the emergence of a range of infectious diseases in the wildlife. Spill-over is particularly important for endangered species and may also occur from wildlife to domestic animals (spill-back) affecting animal production [1]. A well-known example of adaptation to a new host is the human immunodeficiency virus (HIV) that successfully overcame the intrinsic restriction factors constitutive of the species-specific barrier, to successfully infect humans [26]. HIV-2 is a human adapted variant of the simian immunodeficiency virus (SIV) from Sooty mangabeys (*Cercocebus atys*) [27], and HIV-1 may be similarly derived from a chimpanzee (*Pan troglodytes*) SIV [28]. There are different examples of inter-species transmission of lentiviruses displaying more attenuated/virulent phenotype in the new host. In general, SIV cause no observable disease in their natural hosts but may become severe pathogens in novel host species [29]. In the case of BIV, which is non-pathogenic for *Bos taurus*, the transmission to *Bos javanicus* resulted in lethal Jembrana disease [30].

During the last decades many species of wild ruminants have been reintroduced and others have expanded their population across Europe, both in density and geographical range. Transmission of pathogens from or to domestic ruminants poses serious problems since infected wildlife and domestic ruminants may represent a pathogen reservoir to each other [31]. So far, SRLV have been found in Alpine ibexes (*Capra ibex*) from French Alps in contact with domestic goats as well as in hybrids derived from this contact, both of which showed proviral sequences related to CAEV present in local domestic goats [32]. In Rocky Mountain goats (*Oreamnos americanus*), CAEV is able to be transmitted by lactogenic and horizontal routes causing a severe multisystemic disease involving lungs, central nervous system and joints [33]. Mouflon (*Ovis aries musimon*) and domestic sheep hybrids are also susceptible to

CAEV infection [34]; however, among a 101 wild mouflon population from Spain, none showed positive serology against VMV [35]. Similar results were obtained when analyzing sera from red deer in California [36–38], suggesting lack of susceptibility of these wild ruminants to SRLV.

This study aims at providing further evidence of the potential susceptibility of wild ruminants to SRLV infection. We present serological evidence that different wild ruminants may have mounted an antibody response to SRLV. Additionally, we explored the susceptibility of red and fallow deer cells to different SRLV strains for entry, integration, replication and production of infectious viral particles.

Materials and methods

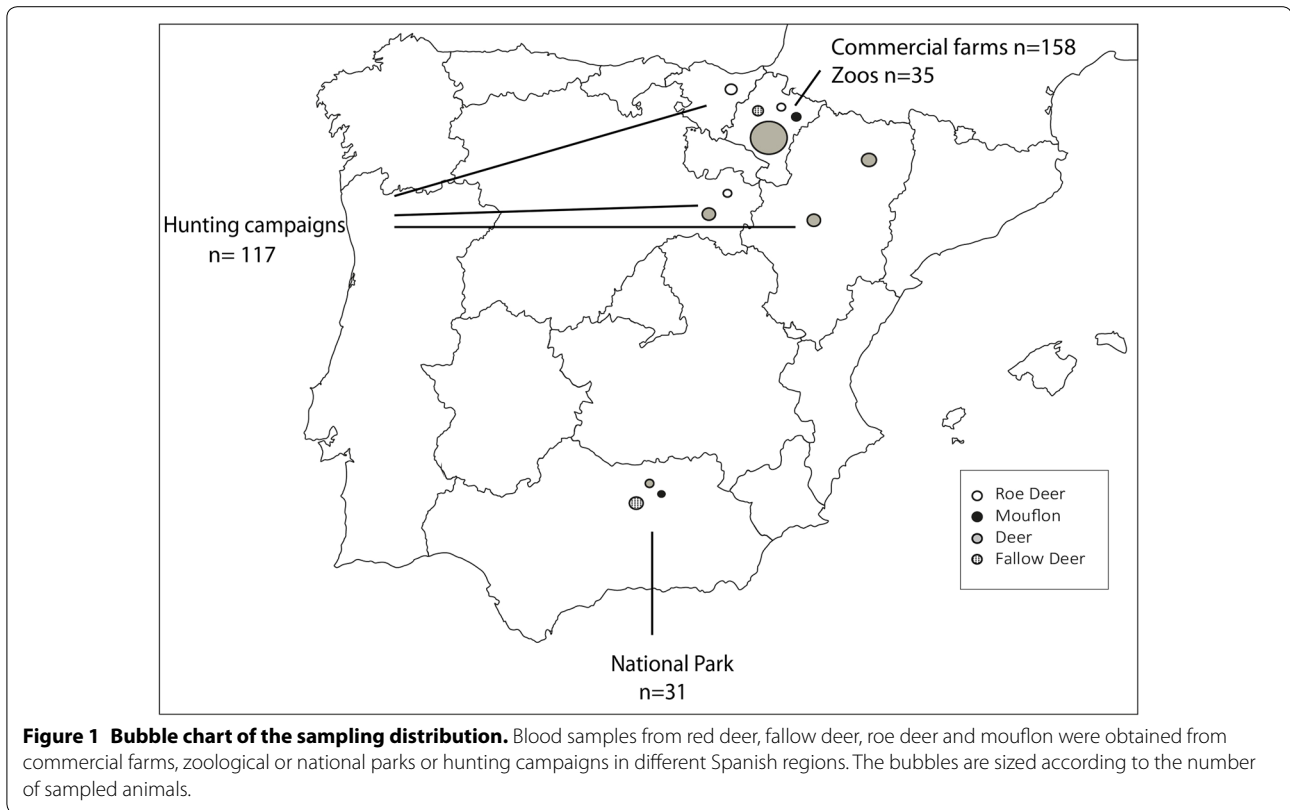
Animals and samples

259 red deer (*Cervus elaphus*), 36 roe deer (*Capreolus capreolus*), 40 fallow deer (*Dama dama*) and 16 mouflon (*Ovis aries musimon*) from different origins as specified in Figure 1, were sampled to obtain whole blood in EDTA-3 K as anticoagulant. Deer were from zoos (4%), national parks (4%), production farms (61%) and hunting campaigns (31%). Roe deer were all from hunts, fallow deer from zoos (37.5%) and national parks (62.5%) and mouflon were from zoos (62.5%) or national parks (37.5%).

Plasma was obtained and stored at -20°C for serological determinations and buffy coat for PCR analyses. Peripheral blood leucocytes (PBLs) were isolated from buffy coat samples by density gradient centrifugation and resuspended in PBS for DNA extraction using QIAamp[®] DNA Blood Mini Kit (Qiagen).

Serological analysis

Plasma samples were analyzed for SRLV antibodies by four different ELISA methods. Commercial ELISAs for detection of SRLV antibodies were slightly modified in order to detect IgG from wild ruminant species. This was achieved in a first round, by using protein Pierce Purified Recomb[®] Protein G Peroxidase conjugated (Recombinant Protein G, Pierce) or secondly, with a secondary antibody able to cross-react with a wide range of ruminant species, including red deer and fallow deer (EG5, Ingenasa). ELISA plates used included commercial Chekit (AG-CHEKIT CAEV/MVV kit, IDEXX Switzerland), ELITEST (Elitest-MVV Hyphen-Biomed, France) and a previously described home-made ELISA that is based on coating with single synthetic peptides alone or in combination [39]. Procedures were carried out following manufacturer's instructions with the exception of the conjugate antibody which, as mentioned, was substituted by a secondary antibody able to react with wild species' IgG.



PCR

DNA samples from fifteen seropositive and four seronegative animals were subjected to amplification by described PCRs for SRLV and BIV detection (Table 1). Thermal amplification protocols were adapted to annealing temperature of each primer pair and results were analyzed in 1% agarose gels. Bands of the expected molecular weight were cut and purified using ATP Gel/PCR extraction kit (ATP Biotech Inc.). Purified products were cloned into pGEMT-easy vector (Promega) following manufacturer's instructions and sequenced using M13 primers.

Cells and SRLV in vitro infection

Red deer (DSF) and fallow deer (FSF) skin fibroblasts were obtained from skin biopsies, isolated by trypsin disruption and cultured in DMEM medium supplemented with 10% foetal bovine serum (FBS), 1% L-glutamine and 1% antibiotic/antimycotic mix (Sigma-Aldrich). Previously obtained ovine skin fibroblasts (OSF) or goat synovial membrane cells (GSM) were used as control cells as indicated throughout the experiments.

Blood derived macrophages (BDM) from deer and fallow deer were also obtained as described [40]. Briefly, buffy coat diluted in PBS was loaded onto Ficoll-Paque Premium 1.084 (GE Healthcare) gradient to isolate peripheral blood mononuclear cells. BDM were obtained

by adherence and cultured in RPMI 1640 supplemented with 1% L-glutamine, 1% non-essential amino acids, 50 μ M β -mercaptoethanol, 1% vitamins, 10 mM sodium pyruvate and 10% foetal bovine serum (FBS). Sheep BDM were also obtained for comparative purposes. Cultures with fibroblast-like cells overgrowth were discarded.

Established cultures were maintained and used in experimental infections with Ev1 [41], CAEV-Co [42], A4 [21] and Ov496 strains of SRLV [19]. In vitro infection was carried out at 0.1 and 1 TCID₅₀/cell in DMEM 2% medium in the case of Ev1 and 496 strains and with 20 copies/cell in the case of CAEV-Co and A4 isolates. After 16 h, cells were washed three times with PBS and resuspended in lysis buffer AL (Qiagen) for DNA extraction and amplification of viral DNA with described primers (Table 1). For confirmatory purposes, DNA from in vitro infected fibroblastic cells was subjected to PCR with primers Craft-Oslo, A4-SU and CO-SU, for strains EV1, 496 and A4, CAEV-Co, respectively (Table 1). Amplicons were purified, cloned into pGEMT-easy vector and sequenced (StabVida). Additionally, after washing with PBS, cultures were maintained 10 days post inoculation for RT-activity determinations following manufacturer's instructions for Ev1 and 496 strains (HS-Lenti RT Activity Kit, Cavid). Viral quantification (viral RNA copies/ μ L) of A4 and CAEV-Co strains in the supernatants was

Table 1 Primers covering gag, pol, LTR and env regions, were used for the SRLV detection by PCR

PCR assay	Primers	Sequence 5'-3'	References		
Gag nested PCR	GAG F1	TGG TGA RKC TAG MTA GAG ACA TGG	[64]		
	GAG F2	CAA ACW GTR GCA ATG CAG CAT GG			
	POL R1	CAT AGG RGG HGC GGA CGG CAS CA			
	POL R2	GCG GAC GGC ASC ACA CG			
Pol nested PCR	P28	CAT GAA GAG GGG ACA AAT CAG CA	[18]		
	P34	TAC ATT GGG TGC CTG GAC ATA A			
	P32	TAC CTG DGT TGG TCC YWG CCA CT			
	P33	CTT CCC AVA GTA CCT GDG TTG GTC			
	P29	GGT GCC TGG ACA TAA AGG GAT TC			
	P35	GCC ACT CTC CTG RAT GTC CTC T			
Gag-Can nested PCR	CAEV F0	AAC TGA AAC TTC GGG GAC GCC TG	[5]		
	CAEV F1	AAG GTA AGT GAC TCT GCT GTA CGC			
	CAEV F2	TGG TGA GTC TAG ATA GAG ACA TGG			
	CAEV R0	GTTATCTCGTCCTAATACTTCTACTGG			
	CAEV R1	TTT TTC TCC TTC TAC TAT TCC YCC			
	CAEV R2	GGA CGG CAC CAC ACG TAK CCC			
	MVV F0	AAG TAA GGT AAG AGA GAC ACC TAC TGG			
	MVV F1	TAG ATA GAG ACA TGG CGA AGC AAG CTC			
	MVV F2	GAC AGA AGG GAA CTG TCT ATG GGC			
	MVV R0	GGT GGT GCT TCT GTT ACA ACA TAG G			
	MVV R1	GGA CGG CAC CAC ACG TGG			
	MVV R2	CCC CTC CTG YTG TTT CCC TG			
	BIV nested PCR	POL3		ACA ACG GGC CGT GCT TTA CTG	[65]; [66]
		POL4		CCT CTT CCT CTA TTA CTG CTG C	
POL5		GAR AAT CTA TGT AAG TAT CTG GG	Unpublished data (Nadin-Davis)		
POL6		CTG TTY CTT ACG TAA CAC CAC T			
P09		CAC TGG ACG AGA TGA GGT AGT	[67]		
P06		TGG TAG TCT GAT AAA TGG CA			
P04		CAG GCT CTT AAG GAA ATT GT			
P11		CCA TCC TTG TGG TAG AAC ATT			
Craft-Oslo	Craft-Fw	TGA CAG AAG GAA ATT GTY TRT GG	[68]		
	Oslo-Rv	GGC ATC ATG GCT AAT ACT TCT AA			
LTR PCR	LTR-Fw	TGA CAC AGC AAA TGT AAC CGC AAG	[69]		
	LTR-Rv	CCA CGT TGG GCG CCA GCT GCG AGA			
CO qPCR	612-F	GAA CTC AGC CAC AAG AGG AAG AA	[70]		
	613-R	CCT GCG GCA GCT ACT ATT GC			
	614 Probe	FAM AACTAGCATAATGACCAAGCCAACGCCTCT BHQ-1			
A4 qPCR	Fs7631/Fg6221	ACA AAC TGG ACC ACC ATG CA	[21]		
	Rg6221	CTA GTG TTC CAT TTC CTG TTC TGT TTA			
	Probe g6221	FAM GGC AAC TGT TCW CAG TGT GTT AAT GYA ACG BHQ-1			
A4-SU PCR	SU5-1F	GTA GAT GTG TAC AAA GAC CAG	[21]		
	SU5-1R	CTG CCT CTA ACA CTT GCT GC			
CO-SU PCR	B1-SU5-1R	TGC CTC TAA CAC ATC CTG CTG TGC	[70]		
	B1-SU5-1F	GGT GGA ACA TAT GAC AGG AG			

Primers able to amplify bovine immunodeficiency virus were included

done by qPCR (Qiagen QuantiTec Probe RT-PCR) using primers and TaqMan probes g6621 and 614 respectively (Table 1).

BDM supernatants were collected at 3, 10 and 14 days and the CAEV-Co and A4 viral RNA was quantified by real time PCR using specific primers and Taqman probes (Table 1).

LTR promoter activity

LTR basal activity from strains A4 [21], KV1772 [43], Ov496 [19] and CAEV-Co [42] was assayed using a luciferase reporter system. Briefly, DSE, FSF and GSM cells (10^5 in 24-well plates) were transfected with 200 ng of each LTR construction using 4 μ L of Lipofectamine-LTX Reagent and 0.2 μ L of PLUS-Reagent (Life Technologies). Plasmids pGL4.13 [luc2/SV40] and “empty” p-GL4.10 [luc2] were used as positive and negative controls, respectively. At the same time, 20 ng of pGL4.73 [hRluc/SV40] Vector (Promega) were cotransfected, so that the firefly activity was standardized according to the Renilla luciferase activity. After 24 h, cells were harvested with Passive Lysis 5X Buffer (Promega), and firefly and renilla luciferase activity were measured following manufacturer’s instructions. Results were expressed as: Relative Luminescence Units (RLU) firefly luminescence/RLU Renilla luminescence.

Entry assay

CAEV (including human alkaline phosphatase, AP) [22] virions pseudotyped with ENV proteins from strains Ev1 [41], CAEV-Co [42], 697 [44], Roccaverano [45] and Seui [46] of SRLV, as well as Vesicular Stomatitis virus protein G (VSV-G) produced in 293-T cells as described [22, 47] were used to transduce red deer and fallow deer skin fibroblasts. Briefly, pseudoviruses were incubated with target cells and after 72 h cells were washed three times with PBS and endogenous AP activity blocked by heating at 65 °C 1 h in a humidified chamber. After blocking, NCTBI reagent was added to cells for 2–24 h and finally reaction was stopped with normal water. Stained cells were visualized and counted under light microscopy by two experts.

Western blot

Sodium dodecyl sulfate–polyacrylamide gel electrophoresis (SDS-PAGE) was carried out using Ev1 and 496 infected DSE, FSF and OSF extracts. For Western blot analysis, monoclonal antibodies against p25 (VPM70, kindly provided by Dr B. Blacklaws, University of Cambridge, UK) was used undiluted. Anti-mouse IgG peroxidase-conjugated (Pierce) was used as secondary antibody. In addition, sera from two experimentally infected sheep with SRLV strains from genotype A and B respectively were used to reveal protein production. Reactions were developed by chemiluminescence (Amersham ECL Western blotting detection reagents; GE Healthcare, Buckinghamshire, UK).

Neutralizing antibody (NtAb) assay

Heat inactivated sera from ELISA positive red deer ($n = 6$) were serially diluted in DMEM 2% FBS in a

96-well plate and incubated 1:1 (vol/vol) with 100 TCID₅₀ of strain Ev1. Six wells were used per serum dilution. After mixing and incubating overnight at 4 °C, the mixture was added to sheep fibroblasts. After 2 h at 37 °C, 5% CO₂, the supernatant containing the virus and serum mixture was removed and after washing DMEM 2% FBS was added. Following a 7 day incubation at 37 °C and 5% CO₂ cytopathic effect (CPE, syncytia formation) was screened by microscopy. The NtAb titer was defined as the reciprocal of the serum dilution in which 50% of the culture wells showed no signs of infection.

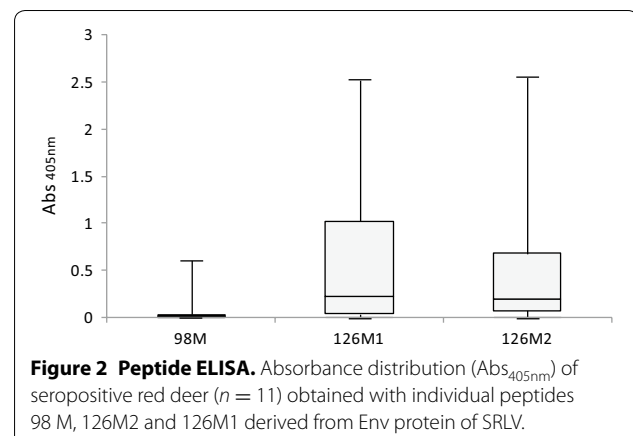
Results

ELISA

Using the home-made ELISA based on synthetic peptides and protein G as conjugate, SRLV antibodies were detected in 14 out of 193 (7%) red deer and one mouflon out of 10 analyzed. Using a secondary antibody able to react against wild ruminant species (EG5, Ingenasa), increased the number of seropositive red deer to 20 out of 141 (14%) and, moreover, allowed the detection of SRLV antibodies in 3 out of 36 roe deer (8%) and one mouflon, but not in fallow deer. Combining results using protein G and EG5 conjugates SRLV antibodies were detected in 26 out of 259 (10%) red deer, 3 out of 36 roe deer and one out of 16 analyzed mouflon.

Single peptide ELISA analyses indicated that peptides 126M1 and 126M2 were responsible for the seropositivity in most of the animals (Figure 2).

In order to confirm specificity of these antibody reactions, some sera were also tested for anti-SRLV antibodies using commercial ELISA (Chekit and Elitest). None of the animals that were seropositive to the peptide ELISA were seropositive to the Elitest with protein G or commercial secondary antibody conjugates. In contrast, 2 red deer that were seronegative to the peptide ELISA were



seropositive with the modified Chekit test using EG5 conjugate.

Seropositive deer were mainly found (15 out of 20 seropositive deer) in commercial farms which represents the largest sample source, followed by hunting campaigns with 4 seropositive animals. Seropositive roe deer were from hunts and the seropositive mouflon was from a zoo.

Seropositive animals were tested for the presence of neutralizing antibodies obtaining titres ranging from 3 to 40.

Screening PCRs

Some bands of the expected size were obtained following PCR amplification using different sets of primers (Table 1). However, after purification, cloning and sequencing none corresponded to known SRLV proviral sequences, instead they matched bovine genomic sequences. Therefore, PCRs for the bovine immunodeficiency virus (BIV) were performed in DNA samples from seropositive and seronegative deer, but none of the amplified products presented a lentiviral-type sequence, they were all identified as genomic DNA.

In vitro infection and entry assay

After being unable to demonstrate virus presence in wild ruminants by PCR in vivo, we decided to shift to in vitro experimental infection and transduction experiments. For this, as indicated in the particular experiments, DSF, FSF and BDM cultures were obtained and infected with SRLV strains belonging to genotype A (Ev1 and Swiss A4) or genotype B (CAEV-Co and Ov496). After 16 h, CPE was evident in cells from both species (red deer and fallow deer) only in the case of Ev1 virus. Since this effect may correspond to a virus over load, viral stocks were titrated again and infection was repeated with similar results.

To clarify if these results correspond to a differential ability of SRLV in entering the cell, entry assays using CAEV-AP virions pseudotyped with envelopes from different SRLV strains were carried out. Although all the tested strains were able to enter into red deer and fallow deer cells, there were differences among them. Red deer cells were more susceptible to Seui, Ev1 and CAEV-Co strains in that order, while FSF mainly allowed the entrance of Ev1 strain from genotype A. Strains Roccaverano, and to a lesser extend 697, showed the lowest values in both cell types (Figure 3).

Post entry restriction

Once demonstrated the SRLV ability to enter into red deer and fallow deer cells, we checked further steps of the viral cycle such as integration and RNA production. PCR at 16 h post-inoculation showed positive

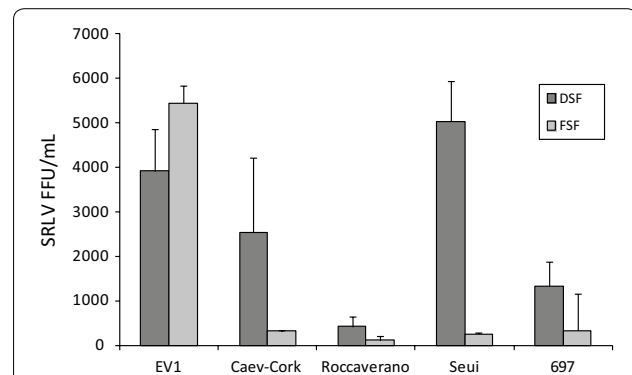


Figure 3 Entry assay with pseudotyped SRLV. Infectivity of CAEV-AP virions pseudotyped with Env proteins from Ev1, CAEV-Cork, Roccaverano, Seui and 697 SRLV strains on red deer skin fibroblasts (DSF) and fallow deer skin fibroblasts (FSF). Results are expressed as focus-forming units per milliliter (FFU/mL).

results in all cases confirming, the permissive entry and the presence of viral DNA within red deer and fallow deer cells. Regardless of the high transcriptional activity of the LTR in fibroblastic cells from deer and fallow deer (Figure 4), RNA production was confirmed only in the case of Ev1 infection in red deer cells 48 h after inoculation.

In spite of these positive correlates of lentiviral productive infection, RT activity in the supernatants was negative in all cases at 7 and 10 days, suggesting low or no production of viral particles to the supernatants (Figures 5A and B). In order to check whether Ev1 and 496 viruses were completely absent from DSF and FSF supernatants, we transferred them to fresh ovine fibroblasts. After 7 days, RT activity from both viruses started to increase only in the case of DSF, reaching positive

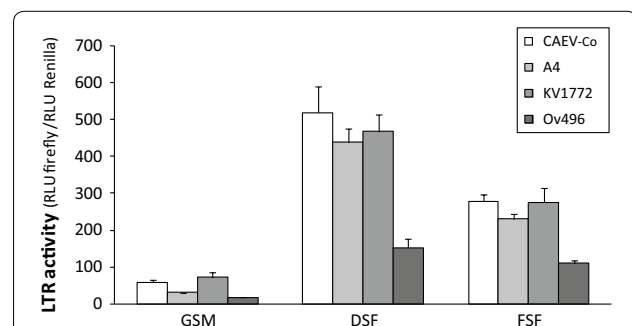
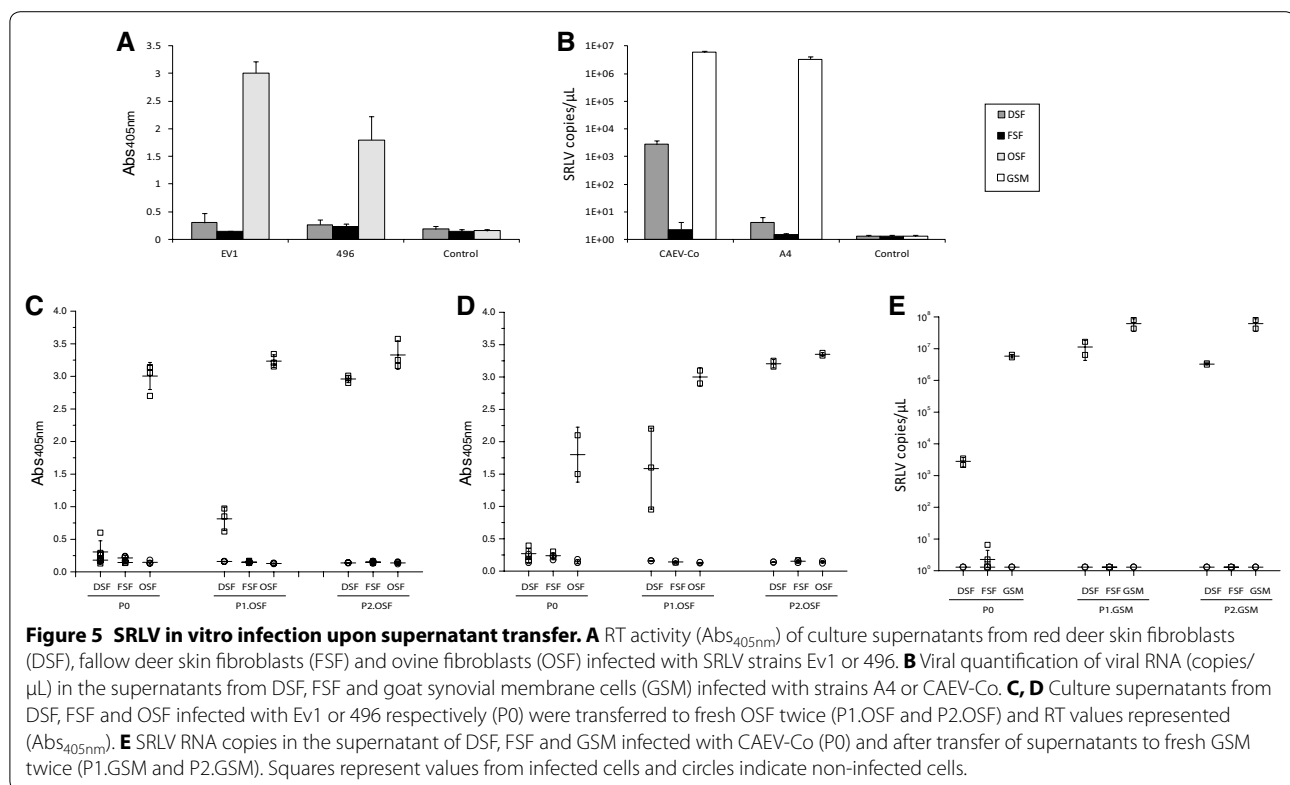


Figure 4 LTR promoter activity. LTR-U3-R region of SRLV strains CAEV-Co, A4, Kv1772 and Ov496 transfected in goat synovial membrane cells (GSM), red deer skin fibroblasts (DSF) and fallow deer skin fibroblasts (FSF). Results are expressed as the ratio between the relative firefly luminescence (RLU) and the Renilla luminescence.



control values at the second supernatant transfer in OSF (Figures 5C and D).

In the case of strains A4 and CAEV-Co, viral RNA was detectable in the supernatants 7 days post-inoculation only in CAEV-Co infected cells. As above, supernatants from these infected-cells were used to infect GSM cells. After 7 days, viral RNA increased in the supernatant for CAEV-Co strain but remained undetectable for A4 strain (Figure 5E).

Furthermore, infected DSF and FSF were passed weekly by trypsinization and after the first passage strains Ev1, 496 and CAEV-Co showed increased production only in DSF, being the strain A4 not able to replicate. At the second passage, Ev1 was able to destroy the cellular monolayer whereas strain 496 was adapted to DSF causing persistent infection similar to ovine fibroblasts. Virus production after passages in FSF remained always negative (Figure 6).

Production of GAG and ENV viral proteins was evaluated by western-blot using monoclonal antibodies anti-p25 and polyclonal sera from infected sheep, aiming at improving cross-reactivity. In agreement with RT activity, capsid protein production was detected in red deer cells infected with strains Ev1 and 496 at the second passage, and in OSF after inoculation with culture supernatant from infected DSF. Also in agreement was the absence of capsid protein in FSF cells neither with 496

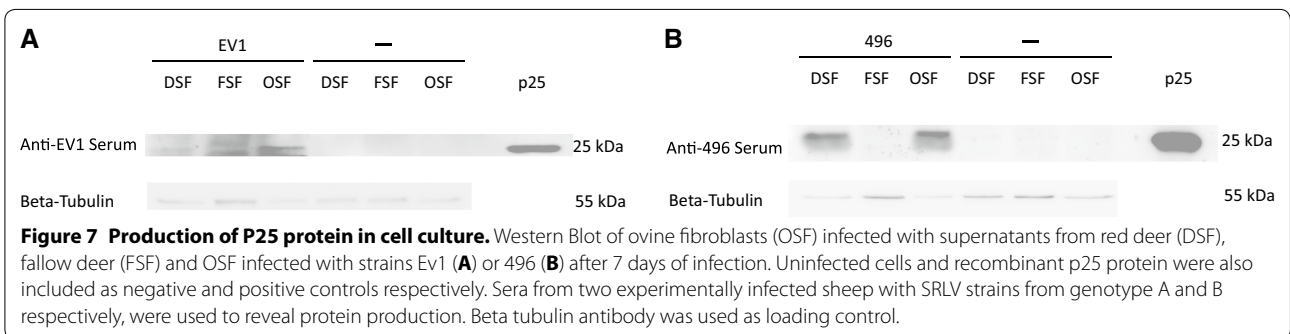
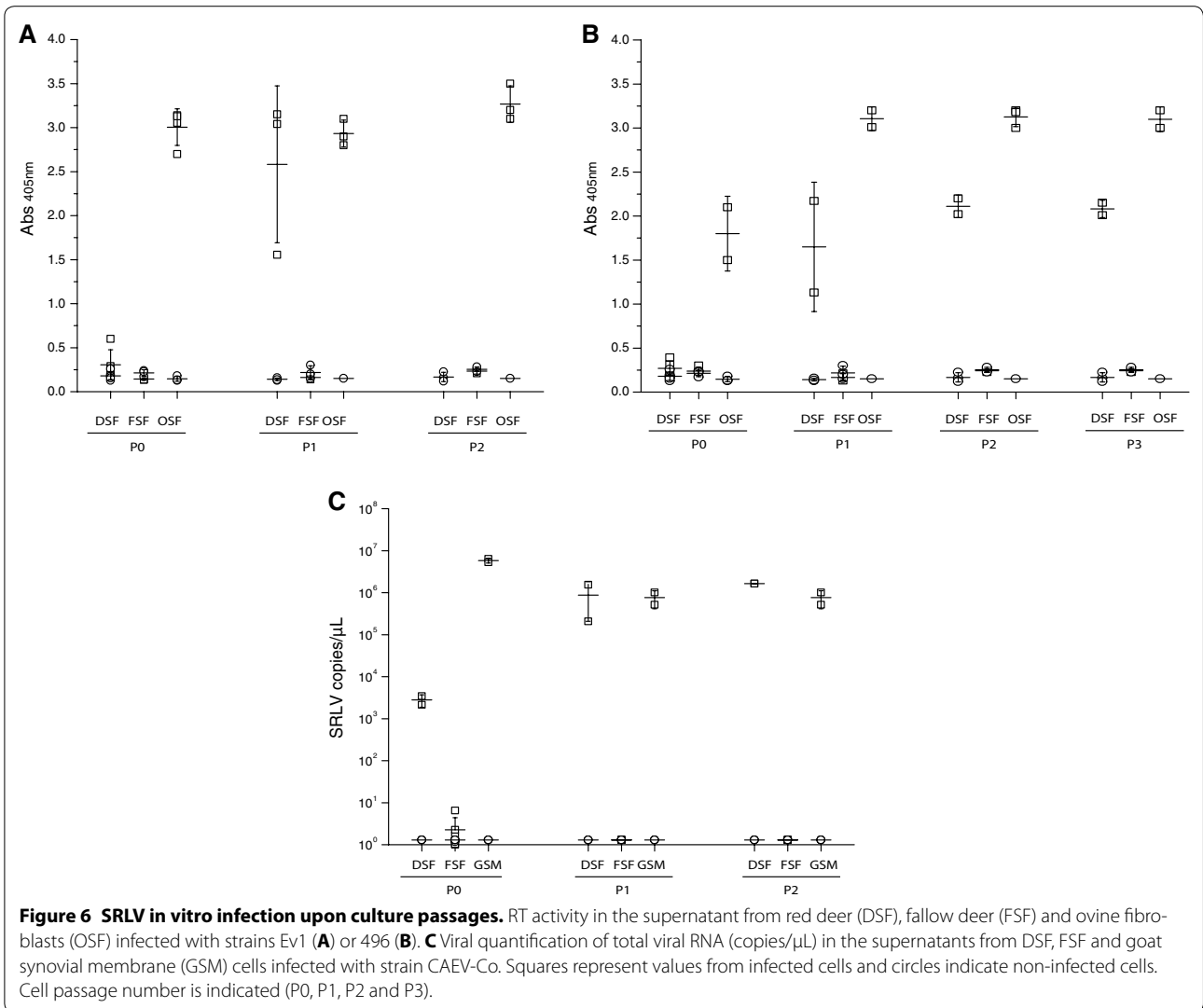
nor Ev1 SRLV strains (Figure 7). Env protein was not specifically detected with the antisera used.

Red deer BDM allowed Swiss A4 infection but few viral RNA copies were amplified from the supernatant. Instead, CAEV-Co replicated more efficiently reaching values obtained with ovine BDM. Fallow deer BDMs showed a more restricted phenotype, similar to that observed in skin fibroblasts showing undetectable virus production. Sheep BDM differentially allowed the replication of SRLV A4 and CAEV-Co strains. While A4 replicated at high titres, CAEV-Co RNA was produced at low levels in the supernatant, confirming the impaired replication of this virus in ovine cells (data not shown).

Discussion

The emergence of the devastating HIV epidemics in the human population following cross species transmission from the natural non-human primate host, in which these lentiviruses cause non-pathogenic persistent infections [48], highlights the ability of this group of viruses to cross the species barrier, adapt to a new host and dramatically increase their virulence.

Transgression of the species-specific barrier by SRLV has been explored in cattle through experimental infection of cows with CAEV-Co strain [49]. SRLV infection induced a persistent antibody production, similar to



that observed in sheep or goats, suggesting viral protein production. However, this was not accompanied by productive long-term infection; indeed although authors demonstrated proviral integration into leukocytes and

tissues, infection did not persist more than 4 months, and virus was not recovered even after attempts to reactivate viral replication. Virus clearance was unlikely due to the humoral response, since antibodies were not neutralizing.

Here, we show positive serological reaction against different SRLV antigen preparations in red deer, roe deer and mouflon, being fallow deer negative. However, this serological reaction was not accompanied by the detection of SRLV sequences by PCR in vivo. In vitro, skin cell cultures from red deer and fallow deer did not produce detectable levels of SRLV Gag or RT proteins in spite of the presence of syncytia and viral DNA and RNA. Infection was rescued by transferring supernatants from red deer skin fibroblasts infected in vitro, to fully permissive ovine fibroblasts suggesting the production of low levels of virus. Although highly dependent on the infecting strain, virus adaptation could be induced in DSF through periodical cell passages in vitro. In contrast, fallow deer cells did not support SRLV infection despite supernatant transfer or cell passages in agreement with serological findings. These results may suggest that SRLV are at different steps in the viral adaptation to red deer and fallow deer. In the last case, host may have evolved to mount an effective long-lasting restriction mechanism of lentiviral replication in vivo. Neutralizing antibodies were detected in ELISA positive sera from red deer however, they unlikely play an important role in the viral infection restrictive pathway as described in caprine and ovine species [21, 50]. Serological reaction was mostly detected by home-made ELISA in comparison with commercial tests as described for ovine and caprine infections likely due to the inclusion of novel epitopes providing wider cross-reactivity [39, 51]. Reaction was mainly directed against peptides 126M1 and 126M2 suggesting a potential SRLV infection involving multiple genotypes. Synthetic peptide ELISA performance was better using secondary antibody than protein G whose specificity against IgG from sheep and goats is moderate and unknown in red deer [52]. Contact with sheep or goats cannot be excluded in animals coming from hunts or national parks, however seropositive animals were mainly found in commercial farms and zoos in which these contacts are at present highly restricted.

Intra-individual SRLV viral reservoir is represented by proviral integration into monocytes that after maturation to tissue macrophages become permissive to viral replication. Wild ruminants could act as inter-individual reservoir potentially responsible for the re-emergence of infection in domestic small ruminant flocks [32]. The high SRLV genome plasticity is translated into a wide tropism that allows the generation of immune escape mutants and the colonization of new target cells and hosts [53]. Accordingly, cells from humans, monkey, hamster, mice, quail, cows [49, 54, 55] and, as shown in this study, red deer and fallow deer are permissive to SRLV entry since viral DNA was detected in vitro upon infection of DSF and FSF. Consequently, amplification and adaptation to a broad spectrum of host species could

be expected. Indeed, SRLV are causing natural cross-species infection in wild ruminants following contact during the free grassing season in wilderness areas, potentially generating uncontrollable reservoir of viruses [32]. This could eventually represent a major obstacle in SRLV eradication programs in domestic sheep and goat flocks.

Endogenous retroviruses from cervids (CERVVs) have been described in Mule deer (*Odocoileus hemionus*) genome [56], confirming previous contacts with retroviruses. Strong humoral and T cell responses are elicited against human retroviruses, especially to HERV-K10 in healthy but mostly in cancer patients due to higher viral expression [57, 58]. However, small ruminants do not mount a strong humoral or cellular immune response against exogenous JSRV, likely due to the presence of a related endogenous counterpart that induce tolerance [59]. Interestingly, sequences from CERV *gag* region were compared with VMV-like isolates and preliminary analyses indicate some degree of structural similarity between both sets of sequences that might explain the presence of serological reaction in the absence of an exogenous lentivirus in vivo. Unfortunately, it is unknown whether red deer develop a detectable antibody production against CERV.

Antigenic cross-reactivity with CAEV in humans has been reported likely due to the consumption of contaminated caprine dairy products [60] potentially favoring SRLV adaptation to humans. In fact, numerous emerging infectious diseases including zoonosis have been originated from wildlife [1, 61]. Domestic animals have been selected for centuries towards a specific production (milk, meat, wool, etc.) and have not been subjected to the same natural selection pressure as their wildlife counterparts and as a result, they are less resistant to a high number of pathogens [62]. However, repeated contacts of potentially susceptible wildlife with domestic SRLVs may lead to the emergence of new adapted lentivirus variants [32].

Lack of viral proteins in cultured cells from wild ruminants could be a consequence of the abnormal processing of the Env protein in these cell types. This has been previously described in sheep choroid plexus cells infected with CAEV-like virus [63]. However, if this was the case no CPE would be expected in DSF cells. Moreover, in vitro findings in this study clearly show the presence of newly synthesized infectious particles in DSF and the ability of SRLV to adapt rapidly to cells from wild ruminants in vitro. However, since in vivo lentivirus cross-species transmission is a rare event that only occurs under specific circumstances other factors related to the host immune response may hamper the progression of infection.

The host innate immunity may play an important role in counteracting infection independent of the presence of

antibodies which are generated following antigenic presentation in the presence or absence of viral replication. Remarkably, cell factors involved in innate and adaptive immunity may evolve much quicker than those required for cell survival likely contributing to lentiviral resistance. Intracellular restriction mechanisms described in small ruminants include tripartite motif containing (TRIM5 α) and APOBEC3, both leading to proteasomal degradation of viral proteins and therefore sharing the MHC-I antigenic presentation pathway that could result in antibody production in the absence of viral replication. On the other hand, tetherin, which impedes normal virus release without affecting proviral load or RNA transcripts. Therefore a future study on SRLV restriction due to intrinsic factors from wild ruminants is warranted.

In summary, our results suggest that cells from the Cervidae family are susceptible to SRLV infection *in vitro* but factors involved at post-entry steps are controlling infection spread *in vivo*. These results may indicate that cervids have a bystander role in SRLV epidemiology.

Competing interests

The authors declare that they have no competing interests.

Author details

¹ Instituto de Agrobiotecnología (CSIC-Universidad Pública de Navarra-Gobierno de Navarra), Avda, Pamplona, 123, 31192 Mutilva-Navarra, Spain. ² Animal Health Department, Regional Campus of International Excellence "Campus Mare Nostrum", Universidad de Murcia, 30100 Murcia, Spain. ³ Institute of Virology and Immunology, Bern, Switzerland.

Authors' contributions

LS carried out the serological screening, PCR and *in vitro* experiments. HC carried out entry assays and *in vitro* infections. IG and LBC were involved in LTR promoter activity determinations, macrophage culture and SRLV infection. CMC and EB were involved in the sampling of tissues and in the writing of the manuscript. BA and DA searched for funding resources, coordinated the sampling process and were involved in the writing of the manuscript. GB and RR designed this study and were involved in work supervision and writing of the manuscript. All authors read and approved the final manuscript.

Acknowledgements

Funded by CICYT (AGL2010-22341-C04-01 and AGL2013-49137-C3-1-R) and Navarra's Government (IIQ010449.R11 and IIQ14064.R11). L. Sanjosé was a FPI fellow of the Spanish MINECO and R. Reina had contracts from the Public University of Navarra and CSIC. We acknowledge Marta Gil Antona for sampling in hunting expeditions and Hunting Associations (FEDEMCA, Tragsa, INTIA, etc.) for their collaboration in the obtention of samples. We acknowledge support in the publication fee by the CSIC Open Access Publication Support Initiative through its Unit of Information Resources for Research (URICI).

Received: 31 July 2015 Accepted: 13 November 2015

Published online: 06 January 2016

References

1. Daszak P, Cunningham AA, Hyatt AD (2000) Emerging infectious diseases of wildlife—threats to biodiversity and human health. *Science* 287:443–449
2. Ramirez H, Reina R, Amorena B, de Andres D, Martinez HA (2013) Small ruminant lentiviruses: genetic variability, tropism and diagnosis. *Viruses* 5:1175–1207
3. Cutlip RC, Lehmkuhl HD, Sacks JM, Weaver AL (1992) Prevalence of antibody to caprine arthritis-encephalitis virus in goats in the United States. *J Am Vet Med Assoc* 200:802–805
4. Ravazzolo AP, Reischak D, Peterhans E, Zanoni R (2001) Phylogenetic analysis of small ruminant lentiviruses from Southern Brazil. *Virus Res* 79:117–123
5. L'Homme Y, Ouardani M, Levesque V, Bertoni G, Simard C, Pisoni G (2011) Molecular characterization and phylogenetic analysis of small ruminant lentiviruses isolated from Canadian sheep and goats. *Virology* 418:271–281
6. Ellis TM, Robinson WF, Wilcox GE (1988) The pathology and aetiology of lung lesions in goats infected with caprine arthritis-encephalitis virus. *Aust Vet J* 65:69–73
7. Querat G, Audoly G, Sonigo P, Vigne R (1990) Nucleotide sequence analysis of SA-OMVV, a visna-related ovine lentivirus: phylogenetic history of lentiviruses. *Virology* 175:434–447
8. Tolari F, Al-Ramadneh W, Mazzei M, Carrozza ML, Forzan M, Bandecchi P, Grego E, Rosati S (2013) Small ruminant lentiviruses in Jordan: evaluation of sheep and goat serological response using recombinant and peptide antigens. *Trop Anim Health Prod* 45:1335–1340
9. Tageldin MH, Johnson EH, Al-Busaidi RM, Al-Habsi KR, Al-Habsi SS (2012) Serological evidence of caprine arthritis-encephalitis virus (CAEV) infection in indigenous goats in the Sultanate of Oman. *Trop Anim Health Prod* 44:1–3
10. Peterhans E, Greenland T, Badiola J, Harkiss G, Bertoni G, Amorena B, Eliaszewicz M, Juste RA, Krassnig R, Lafont JP, Lenihan P, Petursson G, Pritchard G, Thorley J, Vitu C, Mornex JF, Pépin M (2004) Routes of transmission and consequences of small ruminant lentiviruses (SRLVs) infection and eradication schemes. *Vet Res* 35:257–274
11. Keen JE, Hungerford LL, Littledike ET, Wittum TE, Kwang J (1997) Effect of ewe ovine lentivirus infection on ewe and lamb productivity. *Prev Vet Med* 30:155–169
12. Pekelder JJ, Veenink GJ, Akkermans JP, Van Eldik P, Elving L, Houwers DJ (1994) Ovine lentivirus induced indurative lymphocytic mastitis and its effect on the growth of lambs. *Vet Rec* 134:348–350
13. Arsenault J, Dubreuil P, Girard C, Simard C, Belanger D (2003) Maedi-visna impact on productivity in Quebec sheep flocks (Canada). *Prev Vet Med* 59:125–137
14. Martinez-Navalon B, Peris C, Gomez EA, Peris B, Roche ML, Caballero C, Goyena E, Berriatua E (2013) Quantitative estimation of the impact of caprine arthritis encephalitis virus infection on milk production by dairy goats. *Vet J* 197:311–317
15. Ryan DP, Greenwood PL, Nicholls PJ (1993) Effect of caprine arthritis-encephalitis virus-infection on milk cell count and N-acetyl-beta-glucosaminidase activity in dairy goats. *J Dairy Res* 60:299–306
16. Leitner G, Silanikove N, Merin U (2008) Estimate of milk and curd yield loss of sheep and goats with intramammary infection and its relation to somatic cell count. *Small Rumin Res* 74:221–225
17. Nagel-Alne GE, Asheim LJ, Hardaker JB, Solverod L, Lindheim D, Valle PS (2014) The Norwegian Healthier Goats programme—a financial cost-benefit analysis. *Prev Vet Med* 114:96–105
18. Shah C, Huder JB, Boni J, Schonmann M, Muhlherr J, Lutz H, Schupbach J (2004) Direct evidence for natural transmission of small-ruminant lentiviruses of subtype A4 from goats to sheep and vice versa. *J Virol* 78:7518–7522
19. Glaria I, Reina R, Crespo H, de Andres X, Ramirez H, Biescas E, Perez MM, Badiola J, Lujan L, Amorena B, de Andres D (2009) Phylogenetic analysis of SRLV sequences from an arthritic sheep outbreak demonstrates the introduction of CAEV-like viruses among Spanish sheep. *Vet Microbiol* 138:156–162
20. Fras M, Leboeuf A, Labrie FM, Laurin MA, Singh Sohal J, L'Homme Y (2013) Phylogenetic analysis of small ruminant lentiviruses in mixed flocks: multiple evidence of dual infection and natural transmission of types A2 and B1 between sheep and goats. *Infect Genet Evol* 19:97–104
21. Cardinaux L, Zahno ML, Deubelbeiss M, Zanoni R, Vogt HR, Bertoni G (2013) Virological and phylogenetic characterization of attenuated small ruminant lentivirus isolates eluding efficient serological detection. *Vet Microbiol* 162:572–581

22. Hotzel I, Cheevers W (2002) Differential receptor usage of small ruminant lentiviruses in ovine and caprine cells: host range but not cytopathic phenotype is determined by receptor usage. *Virology* 301:21–31
23. Oskarsson T, Hreggvidsdottir HS, Agnarsdottir G, Matthiasdottir S, Ogmundsdottir MH, Jonsson SR, Georgsson G, Ingvarsson S, Andresson OS, Andressdottir V (2007) Duplicated sequence motif in the long terminal repeat of maedi-visna virus extends cell tropism and is associated with neurovirulence. *J Virol* 81:4052–4057
24. Ramirez H, Reina R, Bertolotti L, Cenoz A, Hernandez MM, San Roman B, Glaria I, de Andres X, Crespo H, Jauregui P, Benavides J, Polledo L, Perez V, Garcia-Marin JF, Rosati S, Amorena B, de Andres D (2012) Study of compartmentalization in the visna clinical form of small ruminant lentivirus infection in sheep. *BMC Vet Res* 8:8
25. Pisoni G, Moroni P, Turin L, Bertoni G (2007) Compartmentalization of small ruminant lentivirus between blood and colostrum in infected goats. *Virology* 369:119–130
26. Sharp PM, Hahn BH (2011) Origins of HIV and the AIDS pandemic. *Cold Spring Harb Perspect Med* 1:a006841
27. Hirsch VM, Olmsted RA, Murphey-Corb M, Purcell RH, Johnson PR (1989) An African primate lentivirus (SIVsm) closely related to HIV-2. *Nature* 339:389–392
28. Gao F, Bailes E, Robertson DL, Chen YL, Rodenburg CM, Michael SF, Cummins LB, Arthur LO, Peeters M, Shaw GM, Sharp PM, Hahn BH (1999) Origin of HIV-1 in the chimpanzee *Pan troglodytes troglodytes*. *Nature* 397:436–441
29. Kaur A, Grant RM, Means RE, McClure H, Feinberg M, Johnson RP (1998) Diverse host responses and outcomes following simian immunodeficiency virus SIVmac239 infection in sooty mangabeys and rhesus macaques. *J Virol* 72:9597–9611
30. Soeharsono S, Wilcox GE, Dharma DM, Hartaningsih N, Kertayadnya G, Budiantono A (1995) Species differences in the reaction of cattle to Jembrana disease virus infection. *J Comp Pathol* 112:391–402
31. VandeWoude S, Troyer J, Poss M (2010) Restrictions to cross-species transmission of lentiviral infection gleaned from studies of FIV. *Vet Immunol Immunopathol* 134:25–32
32. Erhouma E, Guiguen F, Chebloune Y, Gauthier D, Lakhal LM, Greenland T, Mornex JF, Leroux C, Alogninouwa T (2008) Small ruminant lentivirus proviral sequences from wild ibexes in contact with domestic goats. *J Gen Virol* 89:1478–1484
33. Patton KM, Bildfell RJ, Anderson ML, Cebra CK, Valentine BA (2012) Fatal Caprine arthritis encephalitis virus-like infection in 4 Rocky Mountain goats (*Oreamnos americanus*). *J Vet Diagn Invest* 24:392–396
34. Guiguen F, Mselli-Lakhal L, Durand J, Du J, Favier C, Fornazero C, Grezel D, Balleydier S, Hausmann E, Chebloune Y (2000) Experimental infection of Mouflon-domestic sheep hybrids with caprine arthritis-encephalitis virus. *Am J Vet Res* 61:456–461
35. Lopez-Olvera JR, Vidal D, Vicente J, Perez M, Lujan L, Gortazar C (2009) Serological survey of selected infectious diseases in mouflon (*Ovis aries musimon*) from south-central Spain. *Eur J Wildl Res* 55:75–79
36. Clark RK, Jessup DA, Kock MD, Weaver RA (1985) Survey of desert bighorn sheep in California for exposure to selected infectious diseases. *J Am Vet Med Assoc* 187:1175–1179
37. Cutlip RC, Lehmkühl HD, Brogden KA, Schmerr MJ (1991) Seroprevalence of ovine progressive pneumonia virus in various domestic and wild animal species, and species susceptibility to the virus. *Am J Vet Res* 52:189–191
38. Chomel BB, Carniciu ML, Kasten RW, Castelli PM, Work TM, Jessup DA (1994) Antibody prevalence of eight ruminant infectious diseases in California mule and black-tailed deer (*Odocoileus hemionus*). *J Wildl Dis* 30:51–59
39. Sanjosé A, Pinczowski P, Crespo H, Perez M, Glaria I, Gimeno M, de Andres D, Amorena B, Lujan L, Reina R (2015) Diagnosing infection with small ruminant lentiviruses of genotypes A and B by combining synthetic peptides in ELISA. *Vet J* 204:88–93
40. Cross ML, Thomson AJ, Slobbe LJ, Griffin JF, Buchan GS (1996) Macrophage function in deer. *Vet Immunol Immunopathol* 49:359–373
41. Sargan DR, Bennet ID, Cousens C, Roy DJ, Blacklaws BA, Dalziel RG, Watt NJ, McConnell I (1991) Nucleotide-sequence of EV1, a British isolate of maedi visna virus. *J Gen Virol* 72:1893–1903
42. Saltarelli M, Querat G, Konings DAM, Vigne R, Clements JE (1990) Nucleotide sequence and transcriptional analysis of molecular clones of CAEV which generate infectious virus. *Virology* 179:347–364
43. Andresson OS, Elser JE, Tobin GJ, Greenwood JD, Gonda MA, Georgsson G, Andressdottir V, Benediksdottir E, Carlsdottir HM, Mantyla EO (1993) Nucleotide sequence and biological properties of a pathogenic proviral molecular clone of neurovirulent visna virus. *Virology* 193:89–105
44. Glaria I, Reina R, Ramirez H, de Andres X, Crespo H, Jauregui P, Salazar E, Lujan L, Perez MM, Benavides J, Perez V, Polledo L, Garcia-Marin JF, Riezu JI, Borras F, Amorena B, de Andres D (2012) Visna/Maedi virus genetic characterization and serological diagnosis of infection in sheep from a neurological outbreak. *Vet Microbiol* 155:137–146
45. Reina R, Grego E, Bertolotti L, De Meneghi D, Rosati S (2009) Genome analysis of small-ruminant lentivirus genotype E: a caprine lentivirus with natural deletions of the dUTPase subunit, vpr-like accessory gene, and 70-base-pair repeat of the U3 region. *J Virol* 83:1152–1155
46. Reina R, Bertolotti L, Dei Giudici S, Puggioni G, Ponti N, Profiti M, Patta C, Rosati S (2010) Small ruminant lentivirus genotype E is widespread in Sarda goat. *Vet Microbiol* 144:24–31
47. Juganaru M, Reina R, Bertolotti L, Stella MC, Profiti M, Armentano M, Bollo E, Amorena B, Rosati S (2011) In vitro properties of small ruminant lentivirus genotype E. *Virology* 410:88–95
48. Wolfe ND, Prosser TA, Carr JK, Tamoufe U, Mpoudi-Ngole E, Torimiro JN, LeBreton M, McCutchan FE, Birx DL, Burke DS (2004) Exposure to nonhuman primates in rural Cameroon. *Emerg Infect Dis* 10:2094–2099
49. Morin T, Guiguen F, Bouzar BA, Villet S, Greenland T, Grezel D, Gounel F, Gally K, Garnier C, Durand J, Alogninouwa T, Mselli-Lakhal L, Mornex JF, Chebloune Y (2003) Clearance of a productive lentivirus infection in calves experimentally inoculated with caprine arthritis-encephalitis virus. *J Virol* 77:6430–6437
50. Andressdottir V, Skraban R, Matthiasdottir S, Lutley R, Agnarsdottir G, Thorsteinsdottir H (2002) Selection of antigenic variants in maedi-visna virus infection. *J Gen Virol* 83:2543–2551
51. de Andres X, Ramirez H, Bertolotti L, San Roman B, Glaria I, Crespo H, Jauregui P, Minguion E, Juste R, Leginagoikoa I, Perez M, Lujan L, Badiola JJ, Polledo L, Garcia-Marin JF, Riezu JI, Borras-Cuesta F, de Andres D, Rosati S, Reina R, Amorena B (2013) An insight into a combination of ELISA strategies to diagnose small ruminant lentivirus infections. *Vet Immunol Immunopathol* 152:277–288
52. Kramsky JA, Manning EJ, Collins MT (2003) Protein G binding to enriched serum immunoglobulin from nondomestic hoofstock species. *J Vet Diagn Invest* 15:253–261
53. Hafliadottir BS, Matthiasdottir S, Agnarsdottir G, Torsteinsdottir S, Petursson G, Andresson OS, Andressdottir V (2008) Mutational analysis of a principal neutralization domain of visna/maedi virus envelope glycoprotein. *J Gen Virol* 89:716–721
54. Lyall JW, Solanky N, Tiley LS (2000) Restricted species tropism of maedi-visna virus strain EV-1 is not due to limited receptor distribution. *J Gen Virol* 81:2919–2927
55. Bruett L, Clements JE (2001) Functional murine leukemia virus vectors pseudotyped with the visna virus envelope show expanded visna virus cell tropism. *J Virol* 75:11464–11473
56. Elleder D, Kim O, Padhi A, Bankert JG, Simeonov I, Schuster SC, Wittekindt NE, Motamery S, Poss M (2012) Polymorphic integrations of an endogenous gammaretrovirus in the mule deer genome. *J Virol* 86:2787–2796
57. Sauter M, Roemer K, Best B, Afting M, Schommer S, Seitz G, Hartmann M, Mueller-Lantzsch N (1996) Specificity of antibodies directed against Env protein of human endogenous retroviruses in patients with germ cell tumors. *Cancer Res* 56:4362–4365
58. Wang-Johanning F, Radvanyi L, Rycay K, Plummer JB, Yan P, Sastry KJ, Piyathilake CJ, Hunt KK, Johanning GL (2008) Human endogenous retrovirus K triggers an antigen-specific immune response in breast cancer patients. *Cancer Res* 68:5869–5877
59. Palmarini M, Mura M, Spencer TE (2004) Endogenous betaretroviruses of sheep: teaching new lessons in retroviral interference and adaptation. *J Gen Virol* 85:1–13
60. Tesoro-Cruz E, Feria-Romero IA, Orozco-Suarez S, Hernandez-Gonzalez R, Silva-García R, Valladares-Salgado A, Bekker-Mendez VC, Blanco-Favela F, Aguilar-Setien A (2009) Frequency of the serological reactivity against the caprine arthritis encephalitis lentivirus gp135 in children who consume goat milk. *Arch Med Res* 40:204–207
61. Minardi da Cruz JC, Singh DK, Lamara A, Chebloune Y (2013) Small ruminant lentiviruses (SRLVs) break the species barrier to acquire new host range. *Viruses* 5:1867–1884

62. Mariante ADS, Egito AA (2002) Animal genetic resources in Brazil: result of five centuries of natural selection. *Theriogenology* 57:223–235
63. Chebloune Y, Sheffer D, Karr BM, Stephens E, Narayan O (1996) Restrictive type of replication of ovine/caprine lentiviruses in ovine fibroblast cell cultures. *Virology* 222:21–30
64. Grego E, Bertolotti L, Quasso A, Profiti M, Lacerenza D, Muz D, Rosati S (2007) Genetic characterization of small ruminant lentivirus in Italian mixed flocks: evidence for a novel genotype circulating in a local goat population. *J Gen Virol* 88:3423–3427
65. Nadin-Davis SA, Chang SC, Smith H, Jacobs RM (1993) Detection of bovine immunodeficiency-like virus by the polymerase chain reaction. *J Virol Methods* 42:323–336
66. Lew AE, Bock RE, Miles J, Cuttill LB, Steer P, Nadin-Davis SA (2004) Sensitive and specific detection of bovine immunodeficiency virus and bovine syncytial virus by 5' Taq nuclease assays with fluorescent 3' minor groove binder-DNA probes. *J Virol Methods* 116:1–9
67. Suarez DL, Whetstone CA (1998) PCR diagnosis of the bovine immunodeficiency-like virus. *Methods Mol Biol* 92:67–79
68. Rimstad E, East NE, Torten M, Higgins J, DeRock E, Pedersen NC (1993) Delayed seroconversion following naturally acquired caprine arthritis-encephalitis virus infection in goats. *Am J Vet Res* 54:1858–1862
69. Zanoni RG, Nauta IM, Kuhnert P, Pauli U, Pohl B, Peterhans E (1992) Genomic heterogeneity of small ruminant lentiviruses detected by PCR. *Vet Microbiol* 33:341–351
70. Ravazzolo AP, Nenci C, Vogt HR, Waldvogel A, Obexer-Ruff G, Peterhans E, Berton G (2006) Viral load, organ distribution, histopathological lesions, and cytokine mRNA expression in goats infected with a molecular clone of the caprine arthritis encephalitis virus. *Virology* 350:116–127

Submit your next manuscript to BioMed Central
and we will help you at every step:

- We accept pre-submission inquiries
- Our selector tool helps you to find the most relevant journal
- We provide round the clock customer support
- Convenient online submission
- Thorough peer review
- Inclusion in PubMed and all major indexing services
- Maximum visibility for your research

Submit your manuscript at
www.biomedcentral.com/submit

