



HAL
open science

Host-parasite interactions from the inside: Plant reproductive ontogeny drives specialization in parasitic insects

Thomas Boivin, Cindy Gidoin, Patrick von Aderkas, Jonathan Safrana, Jean-Noël Candau, Alain Chalon, Marion Sondo, Mohamed El Maataoui

► **To cite this version:**

Thomas Boivin, Cindy Gidoin, Patrick von Aderkas, Jonathan Safrana, Jean-Noël Candau, et al.. Host-parasite interactions from the inside: Plant reproductive ontogeny drives specialization in parasitic insects. PLoS ONE, 2015, 10 (10), 14 p. <10.1371/journal.pone.0133146>. <hal-01331462>

HAL Id: hal-01331462

<https://hal.science/hal-01331462v1>

Submitted on 13 Jun 2016

HAL is a multi-disciplinary open access archive for the deposit and dissemination of scientific research documents, whether they are published or not. The documents may come from teaching and research institutions in France or abroad, or from public or private research centers.

L'archive ouverte pluridisciplinaire **HAL**, est destinée au dépôt et à la diffusion de documents scientifiques de niveau recherche, publiés ou non, émanant des établissements d'enseignement et de recherche français ou étrangers, des laboratoires publics ou privés.



Distributed under a Creative Commons CC BY 4.0 - Attribution - International License

RESEARCH ARTICLE

Host-Parasite Interactions from the Inside: Plant Reproductive Ontogeny Drives Specialization in Parasitic Insects

Thomas Boivin^{1*}, Cindy Gidoïn¹, Patrick von Aderkas², Jonathan Safrana¹, Jean-Noël Candau^{1,3}, Alain Chalon¹, Marion Sondo¹, Mohamed El Maâtaoui⁴

1 INRA, UR 629 Ecologie des forêts méditerranéennes, F-84914, Avignon, France, **2** University of Victoria, Department of Biology, Centre for Forest Biology, Victoria, BC, V8W 3N5, Canada, **3** Natural Resources Canada, Canadian Forest Service, Great Lakes Forestry Centre, Sault Ste Marie, ON, P6A 2E5, Canada, **4** Univ Avignon, EA 4279, BP 21239, F-84916, Avignon, Cedex 9, France

* thomas.boivin@avignon.inra.fr



OPEN ACCESS

Citation: Boivin T, Gidoïn C, von Aderkas P, Safrana J, Candau J-N, Chalon A, et al. (2015) Host-Parasite Interactions from the Inside: Plant Reproductive Ontogeny Drives Specialization in Parasitic Insects. *PLoS ONE* 10(10): e0139634. doi:10.1371/journal.pone.0139634

Editor: Patrizia Falabella, University of Basilicata, ITALY

Received: June 3, 2015

Accepted: September 14, 2015

Published: October 6, 2015

Copyright: © 2015 Boivin et al. This is an open access article distributed under the terms of the [Creative Commons Attribution License](http://creativecommons.org/licenses/by/4.0/), which permits unrestricted use, distribution, and reproduction in any medium, provided the original author and source are credited.

Data Availability Statement: All relevant data are within the paper and its Supporting Information file.

Funding: TB, CG, MS, AC, JS and MEM received grants from the French Agence Nationale pour la Recherche (ANR 10 INTB 1705 04-MACBI), <http://www.agence-nationale-recherche.fr/>. PvA and JNC received grants from The Natural Sciences and Engineering Research Council of Canada, Strategic Partnership Program grant (STPGP 396881-2010), <http://www.nserc-crsng.gc.ca/>. The funders had no role in study design, data collection and analysis, decision to publish, or preparation of the manuscript.

Abstract

Host plant interactions are likely key drivers of evolutionary processes involved in the diversification of phytophagous insects. Granivory has received substantial attention for its crucial role in shaping the interaction between plants and their seed parasites, but fine-scale mechanisms explaining the role of host plant reproductive biology on specialization of seed parasites remain poorly described. In a comparative approach using plant histological techniques, we tested the hypotheses that different seed parasite species synchronize their life cycles to specific stages in seed development, and that the stage they target depends on major differences in seed development programs. In a pinaceous system, seed storage products are initiated before ovule fertilization and the wasps target the ovule's nucellus during megagametogenesis, a stage at which larvae may benefit from the by-products derived from both secreting cells and dying nucellar cells. In a cupressaceous system, oviposition activity peaks later, during embryogenesis, and the wasps target the ovule's megagametophyte where larvae may benefit from cell disintegration during embryogenesis. Our cytological approach shows for the first time how, despite divergent oviposition targets, different parasite species share a common strategy that consists of first competing for nutrients with developing plant structures, and then consuming these developed structures to complete their development. Our results support the prediction that seed developmental program is an axis for specialization in seed parasites, and that it could be an important parameter in models of their ecological and taxonomic divergence. This study provides the basis for further investigating the possibility of the link between plant ontogeny and pre-dispersal seed parasitism.

Competing Interests: The authors have declared that no competing interests exist.

Introduction

Seeds are highly sought after by many animal species as they are extremely aggregated in space with high local abundance relative to other food resources, and as they generally contain nutrient with greater energy than other plant structures [1]. Granivory has received substantial attention for its crucial role in plant demography, spatial distribution, diversity and evolution [2–4]. Moreover, there are numerous features that distinguish granivory from other forms of herbivory in shaping the interaction between plants and their seed parasites [5,6]. Host plant interactions are well-established drivers of the evolutionary processes involved in the diversification of phytophagous insects [7–9].

During seed development, most plants invest substantial resources to provide their embryos with compounds upon which they may draw during embryogenesis and germination [10]. To take advantage of this situation many seed parasites evolved towards an endophytic life-cycle within seed tissues during their early development (pre-dispersal seed parasites). The onset of such host-parasite interactions is thus most likely linked with host plant reproductive biology. The two major groups of seed plants, angiosperms and gymnosperms, indeed initiate the allocation of nutrients to the ovule in two different ways. Most angiosperms and some gymnosperms (e.g. Cupressaceae), require pollination to ensure the normal development of both female gametophyte (megagametophyte) and ovule; nutrient products only begin to accumulate following fertilization [11–13]. In some other gymnosperms (e.g. cycads and Pinaceae), storage may begin in megagametophytes prior to fertilization [14], sometimes even in the absence of pollination (e.g. *Pseudotsuga*). However, unpollinated megagametophytes will eventually abort, resulting in a so-called empty seeds [12,15,16]. Such variation in host reproductive pathways presents different targets for seed parasites seeking storage reserves, for which phenological synchrony with the reproductive stages of their host may be under strong selection and drive ecological specialization [6,17,18]. When feeding on seeds of angiosperms or cupressaceous gymnosperms, the parasite's reproductive success should depend first on fertilization success and then on the ability to find fertilized ovules to lay eggs. Conversely, seed parasites exploiting ovules of pinaceous gymnosperms that produce nutrients even when pollination has not occurred can theoretically target earlier developmental stage of ovules, including pre-fertilization stages [16,19]. Understanding how host-seed parasite interactions take place requires within-season studies of seed parasitism patterns and these have received little attention so far. A major limit to what is currently known is partly a consequence of the tradition of linking phenology of oviposition to external fruit, cone or seed morphology only [20–23]. Plant histological techniques have proven to be successful in investigating the biology and broader evolutionary patterns in cynipid gall wasps [24,25], another family of plant host parasites that share phenological constraints on oviposition with seed endoparasites.

This study aimed at providing cytohistological insights into the role of host reproductive ontogeny in driving seed insect specialization through oviposition strategies. We specifically tested the hypothesis that major differences in seed development programs result in different specific oviposition targets to which seed parasites synchronize their life cycles. Plant parasitism by seed chalcid wasps of the *Megastigmus* genus (Hymenoptera: Torymidae) is an ideal model system with which to address this issue, because this insect group not only occurs on a wide range of angiosperm (Rosaceae and Anacardiaceae) and gymnosperm hosts (Pinaceae, Taxodiaceae and Cupressaceae), but features strong plant-parasite specificities, which have greatly influenced their evolutionary history [26,27]. *Megastigmus* is a highly invasive genus of over 125 species worldwide, half of which are specialist seed feeders that complete their development within the confines of the seed, at a density of only one larva per seed [28,29]. All species are univoltine and share a similar life cycle. Adults emerge from seeds for a brief period,

females oviposit in multiple host trees during a narrow window of development of the host female reproductive structures, and larvae consume both the megagametophyte and the seed embryo before entering a period of developmental arrest (larval diapause) for one to five years [28]. Some *Megastigmus* species target conifer species with ovules at prefertilization stages, others target conifers with ovules that are post-fertilization [16]. In the best-studied system, *M. spermotrophus* females can target Douglas-fir ovules with developing megagametophytes within ovules that are at a prefertilization stage [19]. One of the unusual aspects of this host-parasite interaction is that the insect is able to redirect seed ontogeny to the larva's advantage. Although Douglas-fir megagametophytes are able to develop in the absence of pollen until the time of fertilization, megagametophyte degenerate if ovules are not pollinated. However, if they are parasitized by *M. spermotrophus*, unfertilized ovules not only fail to abort, but they begin to accumulate storage reserves as if they had been fertilized. The fattening seed is consumed by the manipulative parasitic larva [19]. A comparative review of published phenologies of cupressaceous and pinaceous conifers suggested that closer investigation of oviposition in relation to ovule developmental stage should reveal more strategies than are currently known [16]. To address this knowledge gap, we tested here whether *Megastigmus* species specialized on Pinaceae differ in the ovular tissues that they target during oviposition from species specialized on Cupressaceae. The pinaceous representative that we studied was the Atlas cedar *Cedrus atlantica* Manetti, which is parasitized by two species, *M. schimitscheki* Novitzky and *M. pinsapinis* Hoffmeyer. The cupressaceous representative was the evergreen cypress *Cupressus sempervirens* L., which is parasitized by *M. wachtli* Seitner. There is phylogenetic evidence of a taxonomic radiation following initial host adaptation between wasp species exploiting pinaceous and cupressaceous hosts [26,27].

In both pinaceous and cupressaceous host-parasite systems, we superimposed the phenologies of wasp oviposition and host reproductive development. By sectioning ovules before, during and after fertilization, we were able to pinpoint the earliest stages of oviposition and identify the timing of seed development as one important factor that could drive the evolution of the specificity of the interactions between plants and their seed parasites.

Material and Methods

Study systems

The reproductive development of conifer megagametophytes is conservative. The megaspore mother cells undergo meiotic divisions that result in the production of a tetranucleate coenomegaspore that initiate the megagametophyte. Successive waves of mitosis lead to the formation of a free-nuclear stage. In *Cupressus sempervirens* early megagametophyte development occurs from March until early May [30]. The coenocyte then cellularizes, differentiates archeogonia, which mature to form eggs that are receptive early in July. Fertilization is immediately followed by proembryogenesis that extends until the ovule development is suspended in October for winter dormancy [31]. The cypress seed wasp *M. wachtli* is a common species specialized on *C. sempervirens* occurring from the eastern Mediterranean basin to Southern Europe with records extending back from several centuries [32]. Adults emerge in the beginning of summer from two-year old cones and then oviposit immediately in the young growing ones. The last larval instar enters diapause in late summer of the same year. From studies of *Cedrus deodara* [33], we know that *Cedrus* spp. share the same megagametophyte developmental sequence with *Cupressus*. However, in the pinaceous representative in our study—*Cedrus atlantica*—our knowledge of reproductive phenology is poor as it relies exclusively on the external morphology of the cones [34,35]. Two cedar seed wasps, *M. schimitscheki* and *M. pinsapinis*, are specialized on the *Cedrus* genus [36,37]. They exploit and compete for *C. atlantica*

seeds in southern France [38]. *M. schimitscheki* and *M. pinsapinis* adults emerge in spring (May–June) from seeds released by two-year cones during the previous fall, and then immediately oviposit in young growing cones. Adults of *M. schimitscheki* always emerge 10–20 days earlier than *M. pinsapinis* ones, while both species enter larval diapause in late August [39].

Host sampling and cytohistology

Young growing cones were collected in 2011 from trees in two southeastern host populations in which preliminary field work confirmed the presence of their respective seed-specialized wasps: (i) a windbreak plantation of *C. sempervirens* in Montfavet, France (43°55'03.90"N, 4°52'46.98"E, 23 m asl.) and (ii) a natural stand of *Cedrus atlantica* in Luberon, France (43°47'47.50"N, 5°14'28.50"E, 670 m asl.). In each host population, five cones per tree were collected weekly and the same day from five trees during the period of oviposition activity of the wasps. This resulted in 11 (from June 22 to August 31) and 10 (from April 6 to June 8) sampling sessions on the same trees for *Cupressus sempervirens* and *Cedrus atlantica*, respectively. Harvested trees were chosen with similar age, size, and exposure to both light and wind. Collecting cones on the same day and on similar trees limits interindividual discrepancies in cone developmental stages in conifers such as Douglas fir, cedar and the evergreen cypress [19,33,40]. All the sites in this study are located in nationally owned stands and as such did not require a specific permission for cone collection for experimental purposes. In addition, this study was formerly approved by the French Ministry of Agriculture, Food and Forests (MAAP) as a contribution to the sanitary characterization of French forest reproductive material. None of the field surveys in the present study involved endangered or protected species.

All cones were longitudinally sliced the day of their collection using a razor blade and immediately fixed in formalin-acetic acid-alcohol (1/1/8, V/V/V). To promote good penetration of the fixative products specimens were subjected to vacuum for 20 minutes and stored in FAA until required. They were then rinsed 4 hours in tap water and placed in 70% alcohol. Ovules were excised from fixed cone slices, dehydrated in a graded alcohol series (80–100%) and embedded in methacrylate resin (Technovit 7100, Heraeus-Kulzer GmbH, Wehrheim, Germany). Sections (3 µm thickness) were serially cut using a rotary microtome (Reichert-Young Supercut 2065, Wien, Austria), and were then mounted on microscope slides. Periodic acid Schiff's reagent (PAS) procedure was used to visualize polysaccharides (pink), and Naphthol Blue Black was used to visualize proteins (dark blue) [40]. Images were captured using a Leica DFC 300 FX digital camera mounted on a DMR light microscope and analysed using LAS software (Leica). Among each lot of 25 cones collected the same day, at least three randomly chosen samples were sectioned and then analysed per date of collection. Attention was paid to megagametophyte and embryo development in parasitized ovules.

Parasite sampling and oviposition timing

The *Cupressus sempervirens* plantation at Montfavet was sampled for diapausing *Megastigmus wachtli* larvae in February 2011. Ten two-year-old cones per tree were collected randomly from each of 30 trees. Cypress cones naturally open and release seeds a few weeks after collection. Seeds were maintained in well-aired, transparent plastic boxes under natural conditions for the duration of the experiment. In November 2010, diapausing *M. schimitscheki* larvae were sampled by collecting two-year old cones of *C. atlantica* in the Luberon natural cedar stand. *M. pinsapinis* larvae were sampled at the same period but in La Vis, another natural cedar stand (Table 1), because this species is strongly outcompeted by *M. schimitscheki* at Luberon [38]. This results in too low *M. pinsapinis* abundance levels for sampling in this area, although this species can still be observed occasionally in the field. Previous work on cedar

Table 1. Seasonal timing of female emergence in seed wasps specialized on *Cedrus atlantica* (*M. schimitscheki* and *M. pinsapinis*) and *Cupressus sempervirens* (*M. wachtli*) in southeastern France. Estimates of 50% emergence events and their 95% confidence intervals (95% CI) were calculated using a probit analysis, in which emergence proportions and Julian dates were transformed to probits and log10, respectively.

Host-plant (family)	Wasp species	Sample collection			Female emergences in 2011		
		Sample site	GPS coordinates	Year of collection	N	Temporal range	Emergence 50% (95% CI)
<i>C. atlantica</i> (Pinaceae)	<i>M. schimitscheki</i>	Luberon	43°47'47.50"N, 5°14'28.50"E	2010	90	May 2–15	May 9 (May 8–10)
	<i>M. pinsapinis</i>	La Vis	43°54'27.33"N, 3°29'26.89"E	2010	451	May 12–27	May 18 (May 16–20)
<i>C. sempervirens</i> (Cupressaceae)	<i>M. wachtli</i>	Montfavet	43°55'03.90"N, 4°52'46.98"E	2011	178	July 4-August 11	July 20 (July 17–23)

doi:10.1371/journal.pone.0139634.t001

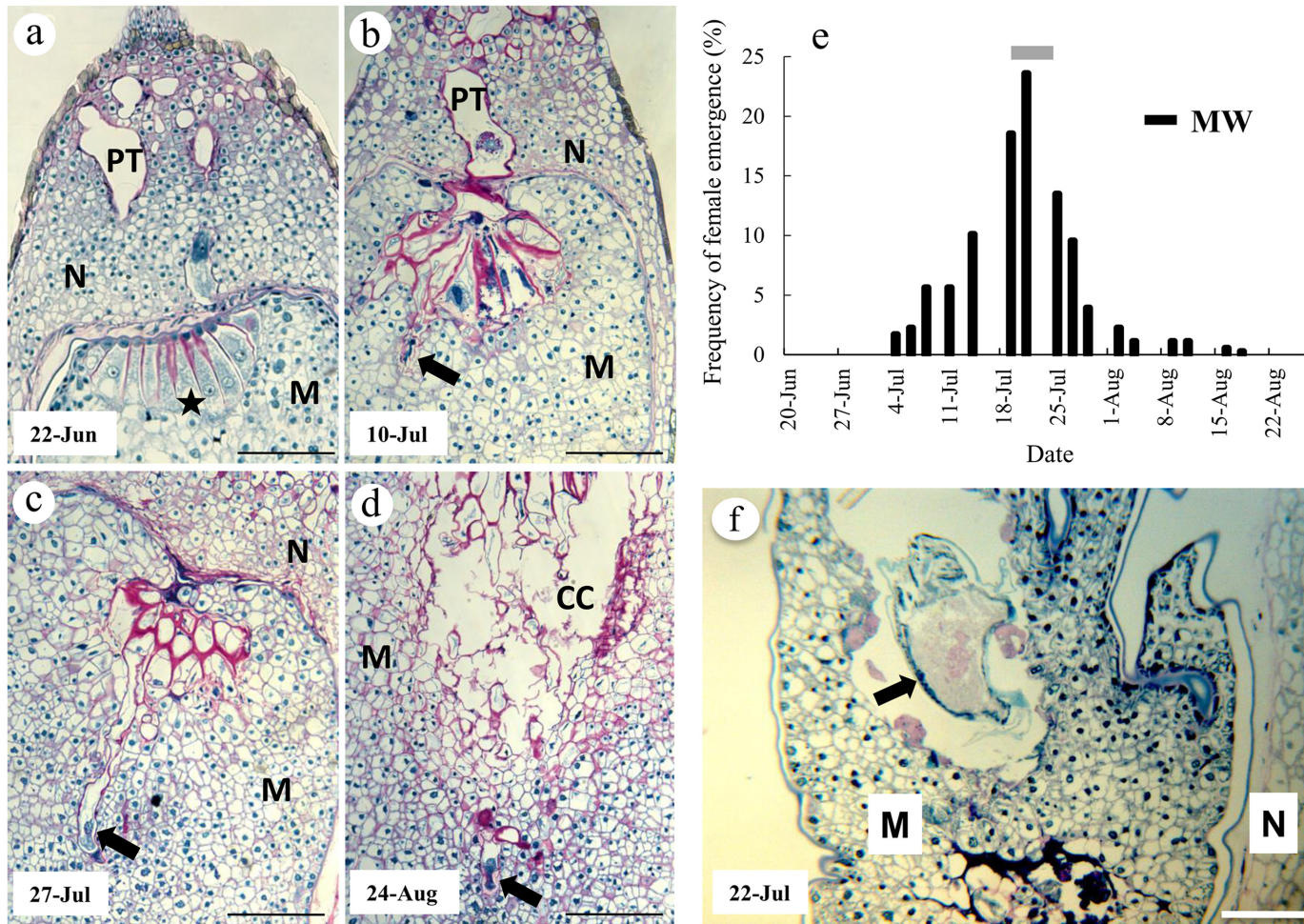
wasps showed that French larvae populations collected in different stands but reared in the same conditions after collection were consistently synchronous at adult emergence [39]. For *M. pinsapinis*, we therefore expected that the La Vis population could be used as a surrogate of the existing but not sampled Luberon population when it came to examining the question of phenology matching between cedars and *M. pinsapinis* reproduction time schedule. In each stand, five two-year-old cones were collected per tree from 10 trees. Cones were individually dissected to extract the seeds. Each of the *C. atlantica* seed lots were maintained in well-aired, transparent plastic boxes under natural conditions for the duration of the experiment. Wasp-infested seed lots of *Cupressus sempervirens* and *Cedrus atlantica* were kept and surveyed at the sites where cones were sampled for the cytohistological studies (i.e. Montfavet and Luberon, respectively) to ensure that the observed phenologies of both hosts and parasites resulted from similar local environmental conditions.

Megastigmus female oviposition begins as soon as they emerge. Most of the eggs of a female are laid during the first week post-emergence [16,20,39,41]. This allows us to use the emergence period as a proxy of the oviposition period, and to consider that the time period during which 50% of emergence had occurred coincided with the highest levels of oviposition activity. In each seed lot, wasp adult emergences were recorded daily and each emerging individual was identified to species and sexed (see Tables A and B in S1 Dataset). Preliminary tests for normality of data were performed by using a Kolmogorov-Smirnov test at the 5% threshold. Emergence patterns of females were further expressed as daily cumulative percentages of emergence, and then characterized using their temporal range and their 50% frequency of occurrence estimated using a probit analysis [42,43]. For this purpose, emergence proportions and Julian dates were transformed to probits and log10, respectively. In an iterative approach, an approximate linearity of the relationship between the transformed variables allowed estimations of linear regression parameters, from which the 50% emergence events and their associated 95% confidence intervals were calculated. Probit analyses were performed using the R program [44]. At each site, daily visual observations of the behaviour of wasps were done to check for consistency between adult emergence records from our seed lots and female oviposition activity in the wild. One hour-long direct observations of ovipositing *M. wachtli* (at Montfavet) and *M. schimitscheki* and *M. pinsapinis* (at Luberon) females were done on 30–40 trees located around the seed lots.

Results

Parasitism strategy in the cupressaceous system

We compared the ontogeny of *Cupressus sempervirens* female reproductive structures with seasonal timing of the oviposition activity of the seed wasp *M. wachtli* (Fig 1). In the *Cupressus*



2011 had cellularized megagametophytes with mature archegonia (Fig 1a). At this prefertilization stage, the female gametophytic tissue constituted the major component of ovules. Except in the micropylar region (Fig 1a) where the nucellus was thicker, the nucellus was generally reduced to few cell layers. Of these, the innermost layers in contact with megagametophyte were in a state of disintegration. Ovules collected on July 10, 2011 were fertilized: proembryos were observed that had begun to enter the surrounding female gametophytic tissue (Fig 1b). Ovules collected on July 27 and on August 24, 2011 had early-stage embryos more fully pushed into the megagametophyte (Fig 1c and 1d). By August 24, 2011, a corrosion cavity had formed by the disintegration of the most central cells of the megagametophyte that surrounded the developing embryos (compare Fig 1c and 1d).

Larvae were observed in sections of parasitized megagametophytic tissues collected on July 22, 2011 (Fig 1f). The larvae were surrounded by remnants of collapsed megagametophyte cells as well as by amorphous materials resulting from cell death.

Parasitism strategy in the pinaceous system

We compared the ontogeny of *Cedrus atlantica* female reproductive structures with seasonal timing of the oviposition activity of the seed wasps *M. schimitscheki* and *M. pinsapinis* (Fig 2). As expected [39], adult females of *M. schimitscheki* emerged earlier (from May 2 to May 15, 2011) than those of *M. pinsapinis* (from May 12 to May 27, 2011) in the *C. atlantica* seed lots. The highest emergence rates for *M. schimitscheki* and *M. pinsapinis* were estimated to be around the May 9 and May 18, 2011, respectively (Table 1; Fig 2e). This reflected the typical phenological discrepancy previously described for these species [39]. Complementary daily field observations revealed that *M. schimitscheki* and *M. pinsapinis* females were ovipositing on Luberon cedar cones from May 5 to May 28, 2011 and from May 9 to June 5, 2011, respectively. These results confirmed that emergence records in our cedar seed lots were a reliable proxy of the seasonal timing of oviposition in the wild. Cones of *C. atlantica* were collected once a week during 10 weeks from April 6 to June 8, 2011, which clearly encompassed the wasps' oviposition periods. This allowed us to describe the reproductive ontogenic stages of cedar ovules before the highest wasp oviposition activity period (April 27, 2011), as well as during (May 10 and May 18, 2011) and after this period (June 1, 2011) (Fig 2a–2d).

Cytological analyses of *C. atlantica* ovules sampled on April 27, 2011 showed that the megagametophytes were at an early free-nuclear phase (Fig 2a). They had a protein-rich cytoplasm that occupied the central region of the ovules. The surrounding nucellar cells appeared to be subjected to an intense lysis as attested by the presence of numerous profiles of collapsing cells with shrunken cytoplasm and disintegrating walls (Fig 2a). A mucilaginous zone composed of a mixture of polysaccharides and proteins is found surrounding the megagametophyte. Sections from ovules harvested on May 10, 2011 had well developed megagametophytes at an early stage of cellularization (Fig 2b). At this stage, nucellar cell breakdown produced a large cavity (not shown) containing disintegrating cells and a mucilage-like substances staining positive for polysaccharides and proteins (Fig 2b). Ovules collected on May 18, 2011 had megagametophytes undergoing archegonial formation (Fig 2c). Fertilization had occurred by June 1, 2011: proembryos were observed in corrosion cavities (Fig 2d). The megagametophyte tissue occupied almost the entire volume of central ovule; of the nucellus, only a thin layer of mucilaginous material remained (not shown).

Larvae were found within the disintegration zone of the innermost nucellar tissue of parasitized ovules collected on May 10, 2011 (Fig 2f). Larvae were surrounded by cell wall remnants of collapsing nucellar cells and by detritus due to cell disintegration. What differed in the ovular tissues between parasitized and non-parasitized seeds was only the presence of a larva and

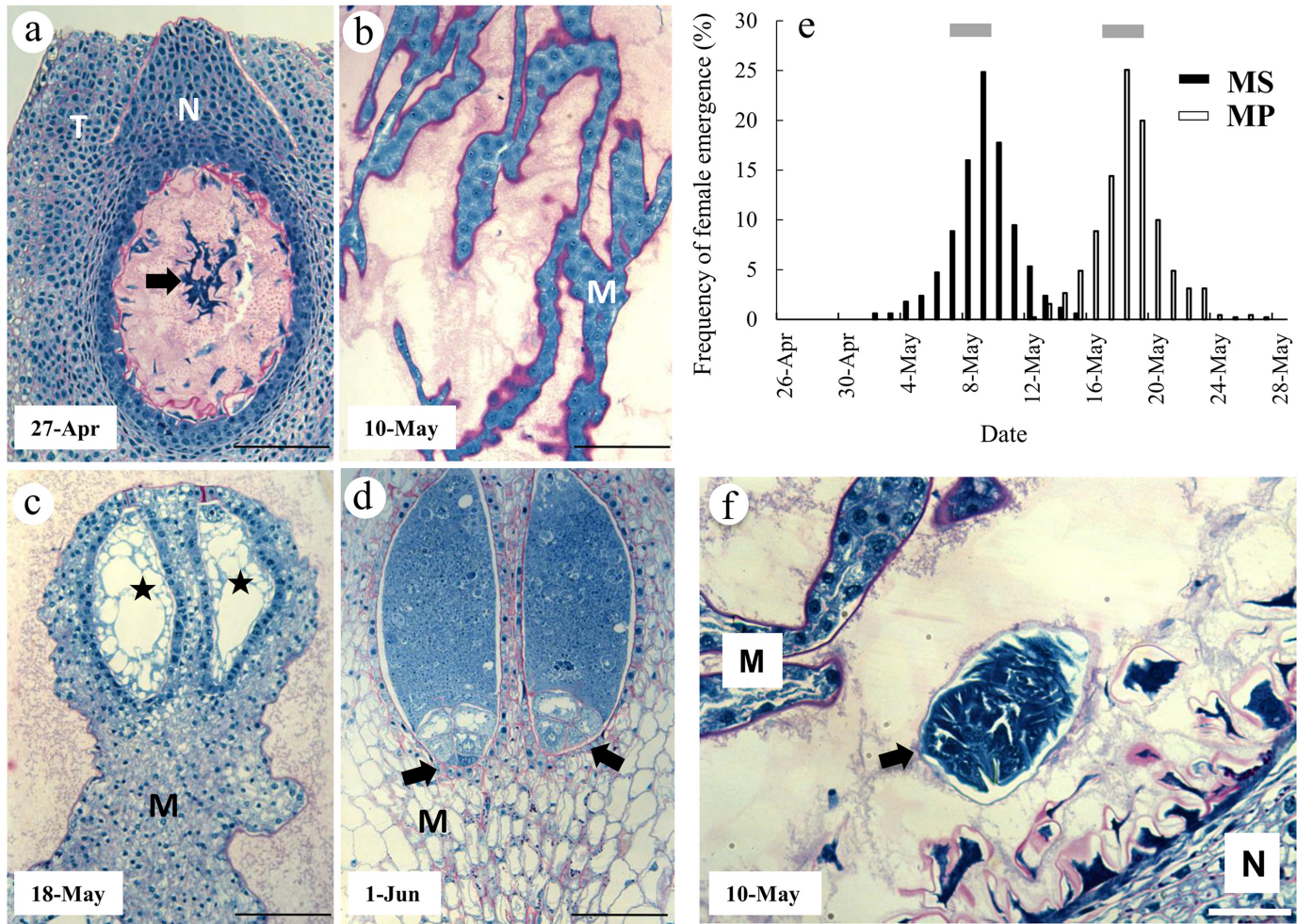


Fig 2. Comparison of the ontogeny of *Cedrus atlantica* female reproductive structures with seasonal timing of the oviposition activity of the seed wasps *M. schimitscheki* (MS) and *M. pinsapis* (MP) in southeastern France. **a**, Longitudinal section of an ovule collected on April 27, 2011 showing integuments (T) and nucellus (N). The megagametophyte (arrow) occupies the central cavity within an amorphous, PAS positive matrix derived from the disintegration of nucellar cells. **b**, Megagametophyte at early cellularization stage from an ovule collected on May 10, 2011. Note the presence of PAS positive substance all around the megagametophyte extensions. **c**, Section from an ovule collected on May 18, 2011 showing cellularized megagametophyte with early archegonia initials (stars). **d**, Section from an ovule collected on June 1, 2011 showing fertilized archegonia at early proembryogenesis (arrows). M, megagametophyte; N, nucellus; T, integuments. Scale bars 150 = μ m, **a** and **c**; 75 μ m, **b** and **d**. **e**, Frequencies of oviposition activity in MS and MP; oviposition begins at female emergence. Grey bars: periods of maximal oviposition activity. **f**, Section of a *C. atlantica* parasitized ovule collected on May 10, 2011 and showing a larva (arrow) between the degenerating nucellus (N) and the cellularized megagametophyte (M). Bar 200 = μ m.

doi:10.1371/journal.pone.0139634.g002

tissues that have been consumed. We did not detect any particular specialized structure resulting from insect parasitism.

Discussion

A central finding of our study is the implication that ecological specialization in pre-dispersal seed parasites is possibly due to synchronization of oviposition timing with the onset of nutrient formation within the targeted plant tissues. In the life cycle of coniferous hosts both megagametogenesis and embryogenesis represent nutrient-abundant stages [12], our data show that early stages of larval development in *Megastigmus* species have specialized to take advantage of these situations to the detriment of seed development. Two different nutrient sources for *Megastigmus* larvae are characterized in our Pinaceae-Cupressaceae comparative approach. In the

pinaceous system, oviposition activity in both *M. schimitscheki* and *M. pinsapinis* peaks during megagametogenesis. At this stage, the cytohistological analysis shows that inner nucellar cells are subjected to an intense lytic process, similar to programmed cell death, which results in the production of an amorphous, mucilage-like substance rich in both polysaccharides and proteins. Other studies have shown that sporopollenin may be released from these tapetum-like layers, providing materials to the developing megaspore wall [45]. Interestingly, in all the parasitized ovules examined at this stage, eggs and early larvae are observed to be confined to the inner nucellus, precisely in the vicinity of collapsing cell layers. This suggests that the primary resources targeted by the cedar wasp larvae are the by-products derived from secreting cells as well as from dying nucellar cells. In agreement with previous research on Douglas fir and *M. spermotrophus* [19], we speculate that parasite targeting of early ovule development followed by larva's redirection of host seed ontogeny is common on the Pinaceae. In the cupressaceous system, oviposition activity in *M. wachtli* peaks later, during embryogenesis. By this stage, the ovule's nucellus has largely disappeared. As a result, larvae are confined to the interior of the megagametophyte, where they probably benefit from both collapsing cells and the amorphous material generated by cell disintegration during corrosion cavity formation that accompanies embryogenesis. These results are consistent with similar approaches conducted on gall wasp communities (Hymenoptera: Cynipidae), which also require specific tissues at specific developmental stages in their hosts, and for which the timing and site of oviposition are essential to successful gall development [46,47]. The precise deposition of eggs in leaf bud tissues is key to species specific differences in gall structure, and may have influenced species radiation in the single genus *Diplolepis* on wild roses [25]. However, we do not detect any wound response to the presence of a larva in both cedar and cypress ovules, i.e. a layer of tissue formed in response to larval feeding activity, as would be found in galls. This implies that these seed wasps evolved towards the use of a plant structure that is naturally acting as a sink for nutrients. Apparently tolerated by the plant, larval development is then favoured by oviposition in this sink. Post-fertilization *Megastigmus* species thus contrast with gall wasps by apparently exploiting their host plant passively at the appropriate time in development, instead of initiating its developmental program as gallers do. Whether pre-fertilization *Megastigmus* species may be considered as gallers by redirecting ovule development is still a matter of debate because the insect does not induce a novel plant structure from a histological point of view, but the larva still prevents megagametophyte degeneration and induces differentiation of plant storage tissues [19]. The mechanisms involved in the prevention of seed abortion are still unknown. One could however postulate that the larva maintains the gradient of the nutrient sink by its rate of consumption of plant tissue, which possibly define a new guild in insect-plant interactions. Comparing such phytophagous insect groups that evolved towards intimate relationships between host phenology and resource supply to larvae, we posit that the strength of host-parasite interaction ranges from passive host exploitation (post-fertilization seed wasps), to active host manipulation without new host structure (pre-fertilization seed wasps) and to active host manipulation with new host structure (gall wasps).

Host plant interactions have been considered for a long time as critical drivers of the evolutionary processes involved in the diversification of phytophagous insects [7–9]. The specificity of the interactions between plants and their parasites depends on a number of factors, one of which is trophic mode. Previous research has indicated that pre-dispersal seed parasites tend to be exceptionally host specific [26,27,48,49]. Parasitism during the seed pre-dispersal phase provides critical study cases in this context as it tends to exclude generalists, while favouring specialists. Insects are indeed adapted to synchronize their life-cycles with the ephemeral availability of seeds from a few closely related host plants, which is likely to reflect specialization [6]. In particular, insect species in which both oviposition and larval development occur

on immature seeds may be under strong selection for synchronizing their life history with appropriate reproductive stages of their host plant [17,18]. By linking both the phenologies and the targets of oviposition in highly-specialized seed wasps and the reproductive ontogeny of their hosts, we provide here novel cytohistological appreciation of how specific host-seed parasite interactions may be shaped.

Cones of conifers generally display continuous development in both size and internal structure that leads to a progressive lignification following embryogenesis and during the seed maturation phase [28,50]. Thus, even if seed wasps have specialized through the exploitation of different nutrient sources at the time eggs are laid within the ovule, oviposition success should be primarily linked to penetration success through the cone scale and bract complex. In the Pinaceae, intensive cone structural changes with time define a narrow favourable window for *Megastigmus* to oviposit as females lay eggs by inserting their ovipositor directly through the young cone scales [16]. Their ability to access ovules thus decreases as the scales harden or their size exceeds that of the ovipositor [38,39]. Conversely, temporal cone structural changes in the Cupressaceae may not severely affect female penetration success as the size of a mature cone is not a limiting factor with respect to ovipositor length, and *Megastigmus* females tend to penetrate between or at the external limit of cone scales, which is likely to limit physical constraints to oviposition [21,32]. Consequently, parasite specialization on the Pinaceae may also result from selection for synchronizing oviposition timing with early morphological stages of cones, while specialization on the Cupressaceae may have been shaped independently from temporal changes in cone structure. This is supported by the shorter adult emergence spread in cedar wasps (2–3 weeks) than in the cypress wasp (6 weeks).

Animals are expected to develop foraging strategies that maximize fitness, e.g. many herbivore insect species have adjusted their phenology and oviposition choices with the occurrence of target host organs that maximize growth and survival of their progeny [51,52]. Our work suggests that both pre- and post-fertilization parasitism strategies might have noticeably divergent fitness implications for seed-specialized parasites. In the case of post-fertilization seed parasitism, this study provides the first evidence that parasites synchronize oviposition timing with the beginning of embryogenesis, i.e. when the storage reserve accumulation that is essential to larval development is triggered. Our approach suggests that a similar strategy may be used in angiosperm seed parasites, such as *Macrodasyceas hirsutum* Kamijo (Hymenoptera: Torymidae) which oviposit exclusively in fertilized seeds of the mochi tree, *Ilex integra* Thund. [53]. The implication is that this strategy makes the insect's reproductive success dependent on the plant's fecundity, i.e. pollination and fertilization. Insect success further depends on the ability of ovipositing females to detect such fertilized ovules. In the case of parasitism of pre-fertilization seed, reproductive success of the parasites is not linked to plant fecundity because, consistently with the seminal work on *M. spermatrophus* and Douglas fir [19], insects that adopt this strategy probably have the ability to prevent abortion in the event of pollination or fertilization failure. We speculate a link of such fitness implications with the successful radiation of the pre-fertilization *Megastigmus* species from an ancestral post-fertilization clade over evolutionary time scales [27]. Species specialized on the Pinaceae indeed account for a third of the total species diversity in the phytophagous group of the *Megastigmus* genus [29].

If this study shows how plant reproductive phenology can be a key factor in the evolution of host specialization in insect parasites, one important applied outcome is that a pre-fertilization parasitism strategy may favour invasiveness in such pest forest insects. Distribution patterns and abundance of univoltine and short-lived herbivores are expected to be noticeably affected by disrupting factors of synchrony between their life history and host plant phenology such as changes in climate or distribution range [52,54]. This may have a more critical meaning for specialists, for which the possibility of refugia on alternative hosts is limited. In a context of

increasing worldwide unregulated seed trades, trans-continental successful invasions of seed wasps have been abundantly reported in pinaceous ecosystems, while they are surprisingly lacking in cupressaceous ones [26,55,56]. Targeting host reserves accumulated before fertilization may be more advantageous than targeting those accumulated after fertilization. There may be three reasons. First, independence from the presence of a fertilized host at emergence counterbalances the possibility of host-parasite phenological asynchrony in the new environment [54]. Second, independence from a host's fecundity limits the parasite's susceptibility to spatio-temporal variation in suitable resources in which to oviposit, e.g. in years (or areas) when pollen production or pollination-fertilization success is low. Finally, because the benefits of ovipositing should be maximized per unit time spent foraging while minimizing the costs [6], the possibility of targeting any ovule in any cone and of preventing seed abortion may efficiently reduce the amount of time required to find those that are suitable for larval development and ensure a sustainable environment for larval growth. Consequently, we posit that developing a pre-fertilization targeting strategy probably makes better parasitic invaders, and pinaceous ecosystems may be more vulnerable to seed-specialist invasions than cupressaceous ones. This hypothesis is supported by the results of a recent survey that shows very low rates of *Megastigmus* parasitism in New World cupressaceous species compared to pinaceous [57].

Supporting Information

S1 Dataset. Raw emergence data of cedar and cypress seed wasps used in this study. (XLSX)

Acknowledgments

We thank two anonymous reviewers for their valuable comments on the manuscript. The authors declare that they have no conflict of interest.

Author Contributions

Conceived and designed the experiments: TB MEM PvA. Performed the experiments: TB MEM JS AC MS. Analyzed the data: TB MEM. Contributed reagents/materials/analysis tools: CG JNC. Wrote the paper: TB MEM PvA.

References

1. Jordano P. Fruits and frugivory. In: Fenner M (ed.) *Seeds: the ecology of regeneration in plant communities*. CABI, Wallingford. 2000;125–166.
2. Hulme PE. Post-dispersal seed predation: consequences for plant demography and evolution. *Perspectives in Plant Ecology Evolution and Systematics*. 1998; 1:32–46.
3. Maron JL, Crone E. Herbivory: effects on plant abundance, distribution and population growth. *Proceedings of the Royal Society B*. 2006; 273:2575–2584. PMID: [17002942](#)
4. Kolb A, Ehrlén J, Eriksson O. Ecological and evolutionary consequences of spatial and temporal variation in pre-dispersal seed predation. *Perspectives in Plant Ecology Evolution and Systematics*. 2007; 9:79–100.
5. Janzen DH. Seed predation by animals. *Annual Review in Ecology and Systematics*. 1971; 2:465–492.
6. Hulme PE, Benkman CW. Granivory. In: Herrera CM, Pellmyr O, eds. *Plant-Animal Interactions: An Evolutionary Approach*. Oxford, Blackwell, 2002;132–154.
7. Ehrlich PR, Raven PH. Butterflies and plants: a study in coevolution. *Evolution*. 1964;586–608.
8. Jousset E, Cruaud A, Genson G, Chevenet F, Footitt RG, Cœur d'acier A. Is ecological speciation a major trend in aphids? Insights from a molecular phylogeny of the conifer-feeding genus *Cinara*. *Frontiers in zoology*. 2013; 10:56. doi: [10.1186/1742-9994-10-56](#) PMID: [24044736](#)
9. Hamm CA, Fordyce JA. Patterns of host plant utilization and diversification in the brush-footed butterflies. *Evolution*. 2015; 69:589–601. doi: [10.1111/evo.12593](#) PMID: [25546268](#)

10. Linkies A, Graeber K, Knight C, Leubner-Metzger G. The evolution of seeds. *New Phytologist*. 2010; 186: 817–831. doi: [10.1111/j.1469-8137.2010.03249.x](https://doi.org/10.1111/j.1469-8137.2010.03249.x) PMID: [20406407](https://pubmed.ncbi.nlm.nih.gov/20406407/)
11. Singh H. *Embryology of Gymnosperms*, 1st edn. Berlin, Gebrüder Borntraeger. 1978.
12. Owens JN, Blake MD. *Forest tree seed production: a review of literature and recommendations for future research*, 1st edn. Chalk River: Petawawa National Forestry Institute. 1985.
13. Arista M, Ortiz PL, Talavera S. Reproductive cycles of two allopatric subspecies of *Juniperus oxycedrus* (Cupressaceae). *Flora*. 2001; 196:114–120.
14. Woodenberg WR, Berjak P, Pammentier NW. Development of cycad ovules and seeds: Implication of the ER in primary cellularisation of the megagametophyte in *Encephelartos natalensis* Dyer and Verdoorn. *Plant Growth Regulation*. 2010; 62:265–278.
15. Powell GR, Tosh KJ. The pollination mechanism and development after bud burst of cones of *Larix laricina*. *Canadian Journal of Botany*. 1991; 69:1179–1187.
16. Rouault G, Turgeon J, Candau JN, Roques A, von Aderkas P. Oviposition strategies of conifer seed chalcids in relation to host phenology. *Naturwissenschaften*. 2004. 91:472–480. PMID: [15729760](https://pubmed.ncbi.nlm.nih.gov/15729760/)
17. McClure M, Quiring DT, Turgeon JJ. Proximate and ultimate factors influencing oviposition site selection by endoparasites on conifer seed cones: two sympatric dipteran species on larch. *Entomologia Experimentalis et Applicata*. 1998. 87:1–13.
18. Harman HM. The effect of variability in the phenology of the reproductive stages of Scotch broom (*Cytisus scoparius*) on the synchronization of the life stages of broom seed beetle (*Bruchidius villosus*) in New Zealand. *Biological Control*. 1999; 15:228–234.
19. von Aderkas P, Rouault G, Wagner R, Rohr R, Roques A. Seed parasitism redirects ovule development in Douglas fir. *Proceedings of the Royal Society B*. 2005; 272:1491–1496. PMID: [16011924](https://pubmed.ncbi.nlm.nih.gov/16011924/)
20. Hedlin AF. Studies on the Balsam-fir seed chalcid, *Megastigmus specularis* Walley (Hymenoptera, Chalcididae). *Canadian Entomologist*. 1956; 88:691–697.
21. Roques A, Raimbault JP, Goussard F. La colonisation des cônes et des galbules des genévriers méditerranéens par les insectes et acariens et son influence sur les possibilités de régénération naturelle de ces essences. *Ecologia Mediterranea*. 1984; 10:147–169.
22. Van Klinken RD. Total annual seed loss on a perennial legume through predation by insects: the importance of within-season seed and seed feeder dynamics. *Austral Ecology*. 2005; 30:414–425.
23. Rossi MN, da Silva Rodrigues LM, Ishino MN, Kestrin D. Oviposition pattern and within-season spatial and temporal variation of pre-dispersal seed predation in a population of *Mimosa bimucronata* trees. *Arthropod Plant Interactions*. 2011; 5:209–2017.
24. Stone GN, Cook JM. The structure of cynipid oak galls: patterns in the evolution of an extended phenotype. *Proceedings of the Royal Society of London, B*. 1998; 265:979–988.
25. Shorthouse JD, Leggo JJ, Sliva MD, Lalonde RG. Has egg location influenced the radiation of *Diplolepis* (Hymenoptera: Cynipidae) gall wasps on wild roses? *Basic and Applied Ecology*. 2005; 6:423–434.
26. Auger-Rozenberg MA, Kerdelhué C, Magnoux E, Turgeon J, Rasplus JY, Roques A. Molecular phylogeny and evolution of host-plant use in conifer seed chalcids in the genus *Megastigmus* (Hymenoptera: Torymidae). *Systematic Entomology*. 2006; 31:47–64.
27. Boivin T, Henri H, Vavre F, Gidoin C, Veber P, Candau JN, et al. Epidemiology of asexuality induced by the endosymbiotic *Wolbachia* across phytophagous wasp species: host plant specialization matters. *Molecular Ecology*. 2014; 23:2362–75. doi: [10.1111/mec.12737](https://doi.org/10.1111/mec.12737) PMID: [24673824](https://pubmed.ncbi.nlm.nih.gov/24673824/)
28. Turgeon JJ, Roques A, de Groot P. Insect fauna of coniferous seed cones: diversity, host plant interactions, and management. *Annual Review of Entomology*. 1994; 39:175–212.
29. Grissell EE. An annotated catalog of world Megastigminae (Hymenoptera: Chalcidoidea: Torymidae). *Contributions of the American Entomological Institute*. 1999; 31:1–92.
30. El Maâtaoui M, Pichot C, Alzubi H, Grimaud N. Cytological basis for a tetraspory in *Cupressus sempervirens* L. megagametogenesis and its implications in genetic studies. *Theoretical and Applied Genetics*. 1998; 96:776–779.
31. Sallandrouze A, Faurobert M, El Maâtaoui M. Characterisation of the developmental stages of cypress zygotic embryos by two-dimensional electrophoresis and by cytochemistry. *Physiologia Plantarum*. 2002. 114:608–618. PMID: [11975736](https://pubmed.ncbi.nlm.nih.gov/11975736/)
32. Roques A, Raimbault JP. Cycle biologique et répartition de *Megastigmus wachtli* (Seitn.) (Hymenoptera: Torymidae), chalcidien ravageur des graines de cyprès dans le Bassin Méditerranéen. *Journal of Applied Entomology*. 1986; 101:370–381.
33. Roy Chowdury C. The morphology and embryology of *Cedrus deodara* Loud. *Phytomorphology*. 1961; 11:283–304.

34. Toth J. Contribution à l'étude de la fructification et de la régénération naturelle du cèdre de l'Atlas (*Cedrus atlantica* Manetti) dans le sud de la France. PhD dissertation, University of Marseilles, Marseilles, France. 1978.
35. Krouchi F, Derridj A, Lefèvre F. Year and tree effect on reproductive organisation of *Cedrus atlantica* in a natural forest. *Forest Ecology and Management*. 2004; 197:181–189.
36. Fabre JP, Auger-Rozenberg MA, Chalon A, Boivin S, Roques A. Competition between exotic and native insects for seed resources in trees of a Mediterranean forest ecosystem. *Biological Invasions*. 2004; 6:11–22.
37. Auger-Rozenberg MA, Boivin T, Magnoux E, Courtin C, Roques A, Kerdelhué C. Inferences on population history of a seed chalcid wasp: invasion success despite a severe founder effect from an unexpected source population. *Molecular Ecology*. 2012; 21:6086–6103. doi: [10.1111/mec.12077](https://doi.org/10.1111/mec.12077) PMID: [23110419](https://pubmed.ncbi.nlm.nih.gov/23110419/)
38. Gidoïn C, Roques L, Boivin T. Linking niche theory to ecological impacts of successful invaders: insights from resource fluctuation-specialist herbivore interactions. *Journal of Animal Ecology*. 2015; 84:396–406. doi: [10.1111/1365-2656.12303](https://doi.org/10.1111/1365-2656.12303) PMID: [25318584](https://pubmed.ncbi.nlm.nih.gov/25318584/)
39. Boivin T, Rouault G, Chalon A, Candau J-N. Differences in life history strategies between an invasive and a competing resident seed predator. *Biological Invasions*. 2008; 10:1013–1025.
40. El Maâtaoui M, Pichot C. Nuclei and cell fusion cause polyploidization in the megagametophyte of common cypress, *Cupressus sempervirens* L. *Planta*. 1999; 208: 345–351.
41. Miller JM. Oviposition of *Megastigmus spermotrophus* in the seed of Douglas-fir. *Journal of Agricultural Research*. 1916; 6:65–68.
42. Finney DJ. *Statistical Method in Biological Assay*, 1st edn. London, Charles Griffin & Co. 1978.
43. Boivin T, Bouvier JC, Beslay D, Sauphanor B. Phenological segregation of insecticide-resistant genotypes in the codling moth *Cydia pomonella* (Lepidoptera: Tortricidae): a case study of ecological divergences associated with adaptive changes in populations. *Genetical Research*. 2003; 81:169–177. PMID: [12929908](https://pubmed.ncbi.nlm.nih.gov/12929908/)
44. R Development Core Team. *R: A Language and Environment for Statistical Computing* R Foundation for Statistical Computing, Vienna, Austria. 2010.
45. Pettitt JM. The megaspore wall in gymnosperms: ultrastructure in some zooidogamous forms. *Proceedings of the Royal Society B*. 1977; 195:497–515.
46. Weis AE, Walton R, Crego CL. Reactive plant tissue sites and the population biology of gall makers. *Annual Review of Entomology*. 1988; 33:467–86.
47. Stone GN, Schönrogge K, Atkinson RJ, Bellido D, Pujade-Villar J. The population biology of oak gall wasps (Hymenoptera: Cynipidae). *Annual Review of Entomology*. 2002; 47:633–668. PMID: [11729087](https://pubmed.ncbi.nlm.nih.gov/11729087/)
48. Hughes J, Vogler AP. The phylogeny of acorn weevils (genus *Curculio*) from mitochondrial and nuclear DNA sequences: the problem of incomplete data. *Molecular Phylogeny and Evolution*. 2004; 32:601–615.
49. Bonal R, Espelta JM, Vogler AP. Complex selection on life-history traits and the maintenance of variation in exaggerated rostrum length in acorn weevils. *Oecologia*. 2011; 167:1053–1061. doi: [10.1007/s00442-011-2036-7](https://doi.org/10.1007/s00442-011-2036-7) PMID: [21674207](https://pubmed.ncbi.nlm.nih.gov/21674207/)
50. Roques A. Biologie et répartition de *Megastigmus spermotrophus* Wachtl. (Hymenoptera Chalcidoidea Torymidae) et des autres insectes liés aux cônes dans les peuplements forestiers et vergers à graines français de sapin de Douglas *Pseudotsuga menziesii* (Mirb.). *Acta Oecologica Oecologia Applicata*. 1981; 2:161–180.
51. Moegenburg SM. Sabal palmetto seed size: Causes of variation, choices of predators, and consequences for seedlings. *Oecologia*. 1996; 106:539–543.
52. Yukawa J. Synchronization of gallers with host plant phenology. *Population Ecology*. 2000; 42:105–113.
53. Takagi E, Iguchi K, Suzuki M, Togashi K. Selective oviposition in fertilized seed of *Ilex integra* by the wasp *Macrodasyceras hirsutum* (Hymenoptera: Torymidae). *European Journal of Entomology*. 2010; 107:197–202.
54. Singer MC, Parmesan C. Phenological asynchrony between herbivorous insects and their hosts: signal of climate change or pre-existing adaptive strategy? *Philosophical Transactions of the Royal Society B: Biological Sciences*. 2010; 365:3161–3176.
55. Roques A, Sun JH, Auger-Rozenberg MA, Hua O. Potential invasion of China by exotic insect pests associated with tree seeds. *Biodiversity and Conservation*. 2003; 12:2195–2210.

56. Auger-Rozenberg MA, Roques A. Seed wasp invasions promoted by unregulated seed trade affect vegetal and animal biodiversity. *Integrative Zoology*. 2012; 7:228–246. doi: [10.1111/j.1749-4877.2012.00308.x](https://doi.org/10.1111/j.1749-4877.2012.00308.x) PMID: [22938521](https://pubmed.ncbi.nlm.nih.gov/22938521/)
57. Candau JN, Dickey A. *Megastigmus* parasitism of North American Cupressaceae. *Forest Genetics Council of British Columbia, TICTalk*. 2015; 12:22–25