



HAL
open science

Dielectrics in a time-dependent electric field: a real-time approach based on density-polarization functional theory

M Grüning, D Sangalli, Claudio Attaccalite

► **To cite this version:**

M Grüning, D Sangalli, Claudio Attaccalite. Dielectrics in a time-dependent electric field: a real-time approach based on density-polarization functional theory. *Physical Review B*, 2016, 94 (3), pp.035149. 10.1103/PhysRevB.94.035149 . hal-01320532

HAL Id: hal-01320532

<https://hal.science/hal-01320532v1>

Submitted on 24 May 2016

HAL is a multi-disciplinary open access archive for the deposit and dissemination of scientific research documents, whether they are published or not. The documents may come from teaching and research institutions in France or abroad, or from public or private research centers.

L'archive ouverte pluridisciplinaire **HAL**, est destinée au dépôt et à la diffusion de documents scientifiques de niveau recherche, publiés ou non, émanant des établissements d'enseignement et de recherche français ou étrangers, des laboratoires publics ou privés.

Dielectrics in a time-dependent electric field: a real-time approach based on density-polarization functional theory

M. Grüning,^{1,2} D. Sangalli,^{3,2} and C. Attaccalite^{4,5,2}

¹*School of Mathematics and Physics, Queen's University Belfast, Belfast BT7 1NN, Northern Ireland, UK*

²*European Theoretical Spectroscopy Facilities (ETSF)*

³*Istituto di Struttura della Materia of the CNR, Via Salaria Km 29.3, I-00016 Montelibretti, Italy*

⁴*CNRS/Univ. Grenoble Alpes, Institut Néel, F-38042 Grenoble, France*

⁵*CNRS/Aix-Marseille Université, Centre Interdisciplinaire de Nanoscience de Marseille UMR 7325 Campus de Luminy, 13288 Marseille cedex 9, France*

In the presence of a (time-dependent) macroscopic electric field the electron dynamics of dielectrics cannot be described by the time-dependent density only. We present a real-time formalism that has the density and the macroscopic polarization \mathcal{P} as key quantities. We show that a simple local functional of \mathcal{P} already captures long-range correlation in linear and nonlinear optical response functions. Specifically, after detailing the numerical implementation, we examine the optical absorption, the second- and third-harmonic generation of bulk Si, GaAs, AlAs and CdTe at different level of approximation. We highlight links with ultranonlocal exchange-correlation functional approximations proposed within linear response time-dependent density functional theory framework.

PACS numbers: 78.20.Bh Theory, models, and numerical simulation

I. INTRODUCTION

Time-dependent density-functional theory¹ (TD-DFT) is a standard tool in the computation of the optical response of molecules and in general of finite systems. In contrast TD-DFT is rarely employed for the study of the optical response of extended systems such as periodic crystals. The main reason is that within the common approximations TD-DFT fails to describe excitonic effects which typically dominate the optical spectra of insulators and semiconductors.²

Though commonly attributed to the approximation for the exchange–correlation (xc) density functional, the problem of TD-DFT for periodic crystals is more fundamental. Calculations of optical response of periodic crystal use periodic boundary conditions. TD-DFT is based on the Runge-Gross theorem¹ that establishes the one-to-one correspondence between the time-dependent densities and scalar external potentials. However, for periodic systems in a time-dependent homogeneous electric field only the one-to-one correspondence between the time-dependent currents and potentials (scalar and vector) can be established and time-dependent current density functional theory (TD-CDFT) is then the correct theoretical framework.^{3,4} In particular it is the optical limit, i.e. the case in which the transferred momentum $\mathbf{q} \rightarrow 0$, which cannot be described starting from the density only. One could still work with functionals that depends on the density-only, but there is a price to pay. All the equations have to be worked out with a finite but very small momentum and the $\mathbf{q} \rightarrow 0$ limit can be performed only at the end of the calculation. Furthermore in order to describe excitonic effect the xc functionals have to be ultranonlocal and to diverge as $\mathbf{q} \rightarrow 0$.⁵ Such an approach is used within the linear response framework but it is not feasible within a real-time framework since for practical reasons calculations have to be performed

directly at $\mathbf{q} = 0$. Thus one needs to go beyond the density-only treatment. As a clear indication of this, the macroscopic polarization and the response functions cannot be calculated within a density-only scheme at $\mathbf{q} = 0$.⁶ Problems are not limited to the time-dependent case. Even in the static limit, e.g. for dielectrics in a static homogeneous electric field, Gonze and coworkers proved that “*the potential is not a unique functional of the density, but depends also on the macroscopic polarization*”.⁷ In this case then the theory has to be generalized to consider functionals of both the density and the polarization in what is called density–polarization functional theory (DPFT). The latter can be obtained from TD-CDFT in the static limit.

Here we propose a real-time approach based on DPFT for calculating the optical response properties of dielectrics, thus considering functionals of both the time-dependent density and the macroscopic bulk polarization. Real-time approaches allows in principle to calculate the optical response at all order so to access nonlinear properties,⁸ including nonperturbative extreme nonlinear phenomena⁹ and to simulate real-time spectroscopy experiments.¹⁰ It is highly desirable then to have computational inexpensive first principles real-time approaches, such as TD-DFT, that include excitonic effects. In particular here we consider an effective electric field which is a functional of the macroscopic polarization. We employ simple local functionals of the polarization^{3,11} either fitted to reproduce the linear optical spectra¹² or derived from the jellium with gap model kernel.¹³

In the following, we review DPFT and we extend it to the case of time-dependent electric fields. We discuss briefly the approximations for the effective electric field and we present how the relevant response functions are calculated from the macroscopic polarization. Then, we show that for the optical absorption, the second- and third-harmonic generation of semiconductors the simple

local functionals of the polarization account for excitonic effects similarly to the ultranonlocal kernel within the density-only response framework. In the conclusion we discuss the proposed approach as an alternative to existing schemes based on TD-DFT and TD-CDFT.

II. DENSITY POLARIZATION FUNCTIONAL THEORY

The coupling of an external electromagnetic field with a dielectric is described via the electromagnetic potentials and thus is gauge dependent. In the present manuscript we use the length gauge which is obtained from the multipolar gauge within the electric-dipole approximation (EDA).¹⁴ This implies that we assume a spatially uniform electric field. Such macroscopic electric field enters via a scalar potential, $\varphi(\mathbf{r}) = -\mathcal{E}^{\text{ext}} \cdot \mathbf{r}$, whose corresponding energy has generally the form

$$E_\varphi = -\Omega \mathcal{E}^{\text{ext}} \cdot \mathcal{P} \quad (1)$$

where Ω is the volume and \mathcal{P} is the bulk macroscopic polarization that is then the key quantity to describe the coupling of dielectrics with external fields (in the velocity gauge the coupling would have been instead via the macroscopic current).

For finite systems (i.e. in which the electronic density n goes to zero when $\mathbf{r} \rightarrow \infty$), Eq. 1 is equivalent to $\int n(\mathbf{r})\varphi(\mathbf{r})d\mathbf{r}$ and $\mathcal{P} = \int n(\mathbf{r})\mathbf{r}d\mathbf{r}$. However these expressions are ill-defined when periodic boundary conditions are imposed.¹⁵ The Modern Theory of Polarization¹⁶ provides a correct definition for the macroscopic bulk polarization in terms of the many-body geometric phase. For a system of independent particles in a periodic potential the polarization \mathcal{P} along the Cartesian direction α is given by¹⁷

$$\mathcal{P}_\alpha = -\frac{ief}{(2\pi)^3} \sum_n^{\text{occ}} \int d\mathbf{k} \langle u_{\mathbf{k}n} | \partial_{k_\alpha} u_{\mathbf{k}n} \rangle, \quad (2)$$

where f the spin occupation, and $|u_{\mathbf{k}n}\rangle$ the periodic part of the Bloch function $|\phi_{\mathbf{k}n}\rangle$.

Equation (2) seems to suggest that, though \mathcal{P} cannot be expressed as an explicit functional of the electron density n , it is still an implicit functional of n through the Bloch functions obtained from the solution of the KS equation. As we discuss in the following subsection however, for a dielectric in a macroscopic electric field the macroscopic polarization needs to be considered as an independent variable. Accordingly the macroscopic part of the external electric field \mathcal{E}^{ext} cannot be included via the potential v^{ext} , since the associated energy functional would be ill-defined. In such approach the KS equations and the associated Bloch functions depend on both the density and the macroscopic polarization of the system.

A. Static case

An infinite periodic crystal (IPC) in a macroscopic electric field \mathcal{E}^{ext} does not have a ground-state. Therefore the Hohenberg-Kohn theorem cannot be applied and DFT cannot be used. In particular the density does not suffice to describe the system as the one-to-one mapping between density and external potential does not hold: one can devise an external macroscopic electric field that applied to a system of electrons in an IPC does not change its density n . The works of Gonze Ghosez and Godby,⁷ Resta¹⁸, Vanderbilt¹⁹ and of Martin and Ortiz²⁰ established that in addition to the density, the macroscopic (bulk) polarization \mathcal{P} is needed to characterize IPC in a macroscopic electric field. With some cautions the proof of the Hohenberg-Kohn theorem can be extended²⁰ to demonstrate the existence of the invertible mapping

$$(n(\mathbf{r}), \mathcal{P}) \leftrightarrow (\bar{v}^{\text{ext}}(\mathbf{r}), \mathcal{E}^{\text{ext}})$$

where \bar{v}^{ext} is the periodic microscopic part of the external potential. Then the total energy of an IPC is a functional of both the electron density n and the macroscopic polarization \mathcal{P} :

$$E[n, \mathcal{P}] = \bar{F}[n, \mathcal{P}] + \int_\Omega n(\mathbf{r})\bar{v}^{\text{ext}}(\mathbf{r})d\mathbf{r} - \Omega \mathcal{E}^{\text{ext}} \cdot \mathcal{P}, \quad (3)$$

where \bar{F} , the internal energy, is a universal functional of both n and \mathcal{P} (see Ref. 20 for details). and is defined in the usual way as the sum of the expectation the kinetic and electron-electron interaction operators

$$\bar{F}[n, \mathcal{P}] = \langle \Psi | \hat{T} + \hat{V}_{ee} | \Psi \rangle. \quad (4)$$

The difference with the internal energy within standard DFT is that the N -particle wavefunction Ψ is not an eigenstate of the original Hamiltonian (which does not have a ground state), but of an auxiliary Hamiltonian which commutes with the translation operator (see Ref. 20 for details). Notice that DPFT is not the only way to treat IPC in a electric field within a density functional framework: as an alternative Umari and Pasquarello proposed \mathcal{E} -DFT, a density functional theory depending on the electric field.²¹

The Kohn-Sham equations can be extended as well to treat IPC in a macroscopic electric field.²⁰ In particular the Kohn-Sham crystal Hamiltonian takes the form:

$$H_{\mathbf{k}}^s = -\frac{1}{2}(\nabla + i\mathbf{k})^2 + \bar{v}^s(\mathbf{r}) - \Omega \mathcal{E}^s \cdot \nabla_{\mathbf{k}} \quad (5)$$

which is a functional of both the density and the polarization. In Eq. (5) the Kohn-Sham microscopic (periodic) potential \bar{v}^s is defined as

$$\bar{v}^s(\mathbf{r}) = \bar{v}^{\text{ext}}(\mathbf{r}) + \bar{v}^{\text{H}}(\mathbf{r}) + \bar{v}^{\text{xc}}(\mathbf{r}) \quad (6)$$

$\bar{v}^{\text{ext}}(\mathbf{r})$, \bar{v}^{H} are respectively the microscopic external and Hartree potential. The total classical potential is defined

as $\bar{v}^{\text{tot}}(\mathbf{r}) = \bar{v}^{\text{ext}}(\mathbf{r}) + \bar{v}^{\text{H}}(\mathbf{r})$. \bar{v}^{xc} is the functional derivative of the xc energy with respect to the density. $\bar{v}^{\text{ext}}(\mathbf{r})$ here describes the field generated by the ions, i.e. the electron-ion interaction in the Coulomb gauge and neglecting retardation effects. The last term of the RHS of Eq. (5)—that originates from the last term in the RHS of Eq. (3)—constitutes the key difference with respect to the zero-field KS equations. $\nabla_{\mathbf{k}}$ is the polarization operator derived by functional-differentiating \mathcal{P} [Eq. (2)] with respect to the KS eigenstates. \mathcal{E}^s is the KS macroscopic field

$$\mathcal{E}^s = \mathcal{E}^{\text{ext}} + \mathcal{E}^{\text{H}} + \mathcal{E}^{\text{xc}}, \quad (7)$$

that contains the corresponding macroscopic components of \bar{v}_s . Note that these macroscopic components cannot be included via the potential which would be ill-defined when imposing periodic boundary conditions. The \mathcal{E}^{xc} is defined as the partial derivative of the xc energy with respect to the polarization density field. The sum of the macroscopic external and Hartree fields defines the total classical field:

$$\mathcal{E}^{\text{tot}} = \mathcal{E}^{\text{ext}} + \mathcal{E}^{\text{H}}. \quad (8)$$

At zero-field, that is when no macroscopic external electric field \mathcal{E}^{ext} is applied, the macroscopic component of the ionic potential and of the Hartree component exactly cancel as a consequence of the charge neutrality of the system and the macroscopic xc component vanishes. In this situation standard density-only functional theory can be used.

As \bar{v}^s and \mathcal{E}^s are functionals of the density and the polarization, the Kohn-Sham equations for the KS orbitals $\{\phi_{n\mathbf{k}}\}$ have to be solved self-consistently with the density (spin unpolarized case)

$$n(\mathbf{r}) = 2 \sum_{\text{occ}} |\phi_{n\mathbf{k}}(\mathbf{r})|^2 \quad (9)$$

and the polarization expressed in terms of a Berry phase [Eq. (2)].

B. Time-dependent case

The Runge-Gross theorem¹ is the basis of TD-DFT. It establishes the one-to-one mapping between the time-dependent scalar potential and the time-dependent density. For the case in which a time-dependent vector potential is present Ghosh and Dhara⁴ showed that the mapping can be established between the current-density and the vector potential. More recently Maitra and co-workers³ showed that TD-CDFE is the correct framework for IPC in homogeneous electric fields.

The time-dependent change in the polarization density field \mathbf{p} is related to the time-dependent current-density \mathbf{j} by

$$\mathbf{p}(\mathbf{r}; t) = \int_{-\infty}^t dt' \mathbf{j}(\mathbf{r}; t') \quad (10)$$

In a dielectric we can then use either $\mathbf{p}(\mathbf{r}, t)$ or $\mathbf{j}(\mathbf{r}, t)$ as main variable to describe an IPC in a time-dependent finite homogeneous electric field. Furthermore we can consider separately the microscopic and the macroscopic components of $\mathbf{p}(\mathbf{r}, t)$: $\mathcal{P}(t)$ and $\bar{\mathbf{p}}(\mathbf{r}, t)$. The latter quantity is fully determined by the density through the continuity equation. Then we can extend to the time-dependent case the one-to-one mapping

$$(n(\mathbf{r}, t), \mathcal{P}(t)) \leftrightarrow (\bar{v}^{\text{ext}}(\mathbf{r}, t), \mathcal{E}^{\text{ext}}(t)).$$

The time-dependent Kohn-Sham crystal Hamiltonian has the same form of the equilibrium KS Hamiltonian:

$$H_{\mathbf{k}}^s(t) = -\frac{1}{2} (\nabla + i\mathbf{k})^2 + \bar{v}^s(\mathbf{r}, t) - \Omega \mathcal{E}^s(t) \cdot \nabla_{\mathbf{k}}. \quad (11)$$

We rewrite the external field and potential as the contribution at equilibrium, $\mathcal{E}^{\text{ext},0}$ and $\bar{v}^{\text{ext},0}(\mathbf{r})$ plus the time-dependent perturbation:

$$\mathcal{E}^{\text{ext}}(t) = \mathcal{E}^{\text{ext},0} + \Delta \mathcal{E}^{\text{ext}}(t), \quad (12)$$

$$\bar{v}^{\text{ext}}(\mathbf{r}, t) = \bar{v}^{\text{ext},0}(\mathbf{r}) + \Delta v^{\text{ext}}(\mathbf{r}, t). \quad (13)$$

Then,

$$\bar{v}^s(\mathbf{r}, t) = v^{s,0}(\mathbf{r}) + \Delta \bar{v}^s(\mathbf{r}, t) \quad (14)$$

$$\mathcal{E}^s(t) = \mathcal{E}^{s,0} + \Delta \mathcal{E}^s(t), \quad (15)$$

where the 0 superscript denotes that the functional is evaluated in presence of the equilibrium fields, thus at equilibrium density and polarization. We then restrict ourselves to consider the case with no external macroscopic electric field at equilibrium, i.e. $\mathcal{E}^{\text{ext},0} = \mathbf{0}$, and to a macroscopic-only time dependent perturbation, i.e. $\Delta \bar{v}^{\text{ext}}(\mathbf{r}, t) = 0$. Therefore

$$\Delta \bar{v}^s(\mathbf{r}, t) = \Delta \bar{v}^{\text{H}} + \Delta \bar{v}^{\text{xc}} \quad (16)$$

$$\Delta \mathcal{E}^s(t) = \mathcal{E}^s(t) \quad (17)$$

Finally, the TD-KS equations for the periodic part $u_{n\mathbf{k}}$ of the Bloch function can be expressed as

$$i\partial_t u_{n\mathbf{k}} = \left(H_{\mathbf{k}}^{s,0} + \Delta \bar{v}^s(\mathbf{r}, t) - \Omega \mathcal{E}^s(t) \cdot \nabla_{\mathbf{k}} \right) u_{n\mathbf{k}}, \quad (18)$$

and have to be solved consistently with the time-dependent density and polarization. The latter has the same form of the static polarization [Eq. (18)] with the difference that $|v_{\mathbf{k}n}\rangle$ are the time-dependent valence bands.²²

In the time dependent case and within the EDA, it can be shown straightforwardly that the Hamiltonian in Eq. (11) can be derived from the KS Hamiltonian of TD-CDFE with a gauge transformation from the velocity to the length gauge.³

III. EXPRESSIONS FOR THE KOHN-SHAM ELECTRIC FIELD

The KS electric field in Eq. (7) is the sum of three components. It seems natural to consider the external component \mathcal{E}^{ext} as an input of the calculation, i.e.

$\mathcal{E}^{\text{ext}} = \mathcal{E}^{\text{inp}}$. The total classical field \mathcal{E}^{tot} is then calculated from Eq. (8) by adding the Hartree component that in the EDA is the polarization $\mathcal{E}^H = \mathcal{P}$. This is not the only possible choice nor always the most convenient. When calculating linear and nonlinear optical susceptibilities, which do not depend on the total or external fields, it is numerically more convenient to choose the total classical field as input field. As this work objective is the calculations of optical susceptibilities we adopt indeed $\mathcal{E}^{\text{inp}} = \mathcal{E}^{\text{tot}}$. The two choices for the input field, i.e. either the total or external field, have been referred as “longitudinal geometry” and “transverse geometry” by Yabana and coworkers²³ and are discussed in more length in Appendix A.

While the choice of the input field is a matter of computational convenience, the choice of the expression for the xc macroscopic electric field is critical to the accuracy of the results. Like the microscopic xc potential no exact expression is known and one should resort to an approximation for the functional form of the xc field. Contrary to the microscopic xc potential for which hundreds of approximations exist,²⁴ except for the work of Aulbur and coworkers²⁵ we are not aware of approximations for the xc macroscopic field. What does exist in the literature are xc kernels within the TD-DFT and TD-CDFE that give a non-zero contribution to the response in the optical limit. In what follows we link the xc kernel with the macroscopic field (similarly to Refs. 3 and 11). In fact in the linear response limit the xc electric field is related to the polarization \mathbf{p} (see for example Refs. 3, 11) through the xc kernel $\underline{\underline{F}}^{\text{xc}}$. The latter describes how the xc electric field (both microscopic and macroscopic) changes when the polarization is perturbed. $\underline{\underline{F}}^{\text{xc}}$ can be defined independently through the Dyson equation connecting the polarization response function of the physical system, $\underline{\underline{\chi}}$, to the polarization response function of the KS system, $\underline{\underline{\chi}}^s$. By rewriting the relation between \mathcal{E}^{xc} and $\underline{\underline{F}}^{\text{xc}}$ in reciprocal space²⁶ one obtains³ for the macroscopic component ($\mathbf{G} = 0$)

$$\mathcal{E}^{\text{xc}}(t) = \int dt' \left[\underline{\underline{F}}_{=00}^{\text{xc}}(t-t') \mathcal{P}(t') - i \sum_{\mathbf{G}' \neq 0} \underline{\underline{F}}_{=0\mathbf{G}'}^{\text{xc}}(t-t') \frac{n_{\mathbf{G}'}(t')}{G'^2} \mathbf{G}' \right], \quad (19)$$

and for the microscopic components $\mathcal{E}_{\mathbf{G}}^{\text{xc}}$ ($\mathbf{G} \neq 0$)

$$\mathcal{E}_{\mathbf{G}}^{\text{xc}}(t) = \int dt' \left[\underline{\underline{F}}_{=\mathbf{G}0}^{\text{xc}}(t-t') \mathcal{P}(t') - i \sum_{\mathbf{G}' \neq 0} \underline{\underline{F}}_{=\mathbf{G}\mathbf{G}'}^{\text{xc}}(t-t') \frac{n_{\mathbf{G}'}(t')}{G'^2} \mathbf{G}' \right]. \quad (20)$$

The first term on the RHS of Eq. (19) is directly proportional to the macroscopic polarization, the second term involves the density and is the microscopic contribution to the macroscopic field. Note that as we assume the

EDA we do not have the contribution from the microscopic transverse current as in Maitra and coworkers.³ The variation of the microscopic xc potential $\Delta \bar{v}^{\text{xc}}$ can be written in terms of the microscopic components $\mathcal{E}_{\mathbf{G}}^{\text{xc}}$ as

$$\Delta \bar{v}_{\mathbf{G}}^{\text{xc}}(t) = i \frac{\mathbf{G} \cdot \mathcal{E}_{\mathbf{G}}^{\text{xc}}(t)}{G^2}. \quad (21)$$

Berger¹¹ has recently proposed an approximation for $\underline{\underline{F}}_{=00}^{\text{xc}}$ from current-density functional theory. The approximation however requires the knowledge of the Random-Phase-approximation (RPA) static dielectric function: while within a linear response approach this does not require any additional calculation, within a real-time approach the RPA static dielectric function needs to be computed beforehand. Furthermore Berger¹¹ neglects the microscopic contribution.

An alternative way to derive approximations for $\underline{\underline{F}}^{\text{xc}}$ is to rely on the standard TD-DFT xc kernel f^{xc} . The latter describes how the xc potential changes when the density is perturbed and is defined from the Dyson equation relating the density-density response of the physical and the KS system. The two kernels can be related via the equation

$$f_{\mathbf{G}\mathbf{G}'}^{\text{xc}}(\mathbf{q} \rightarrow 0; t-t') = \lim_{\mathbf{q} \rightarrow 0} \frac{\underline{\underline{F}}_{\mathbf{G}\mathbf{G}'}^{\text{xc}}(t-t') \cdot \underline{\underline{g}}}{|\mathbf{q} + \mathbf{G}| |\mathbf{q} + \mathbf{G}'|}. \quad (22)$$

where $\underline{\underline{g}}$ is the metric tensor.

For example the long-range corrected (LRC) approximations $f^{\text{xc}} \approx f^{\text{LRC}}$, which take the form

$$f_{\mathbf{G}\mathbf{G}'}^{\text{LRC}}(\mathbf{q} \rightarrow 0; t-t') = \lim_{\mathbf{q} \rightarrow 0} \frac{-\alpha^{\text{LRC}} \delta_{\mathbf{G},0} \delta_{\mathbf{G}',0}}{|\mathbf{q}|^2} \delta(t-t'), \quad (23)$$

can be used. Then $\underline{\underline{F}}_{=00}^{\text{xc}} \cdot \underline{\underline{g}}$ can be approximated with any of the α^{LRC} (we assume $\alpha > 0$) proposed in the literature. Unfortunately all the approximations proposed so far^{12,27} neglect the dependence of α on the reciprocal lattice vectors. Furthermore most of the approximations relies on empirical parameters, with the exception of the family of bootstrap kernels^{28,29} that relate α to the electronic screening in an expression equivalent to that derived by Berger from TD-CDFE.

In this work, we derive the $\underline{\underline{F}}^{\text{xc}}$ needed in Eq. (19) from the Jellium with Gap Model (JGM) kernel proposed by Trevisanutto and coworkers.¹³ The latter kernel is a functional of the electronic density n and of the fundamental gap of the material E_{gap} . In the optical limit the JGM kernel takes the form of a long-range corrected approximation with α^{LRC} defined as the cell average¹³ of

$$\alpha^{\text{JGM}}(\mathbf{r}; t) = 4\pi \tilde{B} \left[1 - \exp \left(-\frac{E_{\text{gap}}^2}{4\pi n \tilde{B}} \right) \right]. \quad (24)$$

In the equation above $\tilde{B} = (B + E_{\text{gap}})/(1 + E_{\text{gap}})$, where $B = B[n]$ is a functional of the density found by fitting the local field factor of the homogeneous electron gas

from Quantum Montecarlo data.³⁰ For cubic systems we thus consider $\underline{F}^{\text{xc}} \approx \underline{F}^{\text{JGM}}$ with

$$\underline{F}_{\underline{\mathbf{0G}}}^{\text{JGM}}(t-t') = -\frac{1}{2}\alpha_{\underline{\mathbf{G}}}^{\text{JGM}}(t)\underline{I}\delta(t-t') \quad (25a)$$

$$\underline{F}_{\underline{\mathbf{G0}}}^{\text{JGM}}(t-t') = -\frac{1}{2}\alpha_{\underline{\mathbf{G}}}^{*\text{JGM}}(t)\underline{I}\delta(t-t'). \quad (25b)$$

where $\alpha_{\underline{\mathbf{G}}}^{\text{JGM}}(t)$ is the Fourier transform of Eq. (24) and \underline{I} is the identity tensor. Notice that we symmetrized $\underline{F}_{\underline{\mathbf{G,G}}}^{\text{JGM}}$ so to obtain a Hermitian kernel. Other strategies of symmetrization have been proposed in the literature, see Ref. 13 and reference therein. Like standard approximations for the kernel this approximation neglects memory effects (i.e. the macroscopic field at time t depends on the values of the density and polarization only at time t) and it is thus frequency independent.

Finally, inserting this approximation for the kernel [Eq. (25)] in the expression for the xc fields [Eq. (19)–(20)] and using Eq. (21) we obtain

$$\begin{aligned} \mathcal{E}^{\text{JGM}}(t) &= \alpha_{\underline{\mathbf{0}}}^{\text{JGM}}(t)\mathcal{P}(t) - \frac{i}{2}\sum_{\underline{\mathbf{G}}\neq\mathbf{0}}\alpha_{\underline{\mathbf{G}}}^{\text{JGM}}(t)\frac{n_{\underline{\mathbf{G}}}(t)}{G^2}\underline{\mathbf{G}} \\ \Delta\bar{v}_{\underline{\mathbf{G}}}^{\text{JGM}}(t) &= \frac{i}{2}\sum_{\underline{\mathbf{G}}\neq\mathbf{0}}\frac{\alpha_{\underline{\mathbf{G}}}^{*\text{JGM}}(t)}{G^2}\underline{\mathbf{G}}\cdot\mathcal{P}(t), \end{aligned} \quad (26)$$

where the second term in the RHS of Eq. (20) is zero due to our symmetrization strategy [Eq. (25)]. In our calculations we will use either Eq. (26) and or an $\alpha^{\text{opt}}\mathcal{P}$ approximation for the macroscopic xc electric field in which α^{opt} is a parameter which gives the best agreement between the computed and experimental optical absorption spectra. The two approximations will be referred as JGM polarization function (JGM-PF) and optimal polarization functional (opt-PF).

IV. COMPUTATIONAL DETAILS

The eigensolutions $\{| \phi_{m\mathbf{k}}^0 \rangle\}$ of the zero-field Hamiltonian are calculated using the plane-wave pseudopotential density-functional code ABINIT³¹ within the local density approximation for the xc energy. The kinetic cutoff, the lattice constant and the components included in the valence and type of the pseudopotential used in these calculations are collected in Table I. We have employed norm-conserving pseudopotentials of the Troullier-Martins type³² for Si, AlAs and CdTe, and of the Hamann type³³ for GaAs. For all the systems we have used four shifted $8 \times 8 \times 8$ Monkhorst-Pack meshes³⁴ to converge the ground-state density. The periodic part $\{| u_{m\mathbf{k}}^0 \rangle\}$ of the so-generated eigensolutions are used as a basis to expand the time-dependent KS Bloch-functions (or more precisely their periodic part)

$$|u_{n\mathbf{k}}(t)\rangle = \sum_m |u_{m\mathbf{k}}^0\rangle \langle u_{m\mathbf{k}}^0 | u_{n\mathbf{k}}(t) \rangle = \sum_m |u_{m\mathbf{k}}^0\rangle c_{mn}^{\mathbf{k}}(t) \quad (27)$$

and the TD-KS equations [Eq. (18)] can be rewritten as the equation of motions for the coefficients $c_{nm}^{\mathbf{k}}$. We obtained converged spectra by truncating the sum in Eq. (27) at $m = 9$ bands for Si, $m = 11$ bands for AlAs and GaAs, and $m = 13$ for CdTe.

System	K (Ha)	a_{latt} (Bohr)	atom ₁	atom ₂
Si	14	10.260	Si: $3s^23p^2$	
GaAs	30	10.677	Ga: $4s^24p^1$	As: $4s^24p^3$
AlAs	20	10.696	Al: $3s^23p^1$	As: $4s^24p^3$
CdTe	40	12.249	Cd: $4d^{10}5s^2$	Te: $4d^{10}5s^25p^4$

TABLE I. Parameters for the DFT calculations. The kinetic energy cutoff K , the lattice constant a_{latt} and the non frozen electrons explicitly included in valence.

The derivatives with respect to the crystal momentum that appear in Eqs. (2) and (5) for the polarization and the polarization operator are evaluated numerically. Following Souza and coworkers²² the polarization is rewritten as

$$\mathcal{P}_{\alpha} = -\frac{ef}{2\pi\Omega}\frac{\mathbf{a}_{\alpha}}{N_{\mathbf{k}_{\alpha}^{\perp}}}\sum_{\mathbf{k}_{\alpha}^{\perp}}\text{Im}\ln\prod_{i=1}^{N_{\mathbf{k}_{\alpha}^{\perp}}-1}\det S(\mathbf{k}_i, \mathbf{k}_i + \Delta\mathbf{k}_{\alpha}). \quad (28)$$

where Ω is the cell volume, a is the lattice vector, $N_{\mathbf{k}_{\alpha}^{\perp}}$ is the number of \mathbf{k} -points in the plane perpendicular to reciprocal lattice vector \mathbf{b}_{α} and Δk_{α} the spacing between two successive \mathbf{k} points in the α direction. S is the overlap matrix

$$S_{mn}(\mathbf{k}, \mathbf{k} + \Delta\mathbf{k}_{\alpha}) = \langle u_{m\mathbf{k}} | u_{n\mathbf{k} + \Delta\mathbf{k}_{\alpha}} \rangle. \quad (29)$$

The field coupling operator $\hat{w}_{\mathbf{k}} = \mathcal{E} \cdot \nabla_{\mathbf{k}}$ is calculated as

$$\hat{w}_{\mathbf{k}}(\mathcal{E}) = \frac{ie}{4\pi}\sum_{i=\alpha}^3 N_{\alpha}^{\parallel}(\mathcal{E} \cdot \mathbf{a}_{\alpha})\frac{4D(\Delta\mathbf{k}_{\alpha}) - D(2\Delta\mathbf{k}_{\alpha})}{3}, \quad (30)$$

where $N_{\mathbf{k}_{\alpha}^{\parallel}}$ is the number of \mathbf{k} -points along the reciprocal lattice vector \mathbf{b}_{α} and

$$D(\Delta\mathbf{k}_{\alpha}) = \frac{1}{2}\left(\hat{P}_{\mathbf{k}_i + \Delta\mathbf{k}_{\alpha}} - \hat{P}_{\mathbf{k}_i - \Delta\mathbf{k}_{\alpha}}\right), \quad (31)$$

$$\hat{P}_{\mathbf{k}_i + \Delta\mathbf{k}_{\alpha}} = \sum_n^{\text{occ}} |\tilde{u}_{n\mathbf{k}_i + \Delta\mathbf{k}_{\alpha}}\rangle \langle u_{n\mathbf{k}_i}| \quad (32)$$

In the definition for the projector [Eq.(32)] $|\tilde{u}_{n\mathbf{k}_i + \Delta\mathbf{k}_{\alpha}}\rangle$ are gauge-covariant,²² i.e. are constructed so that transform under unitary transformation in the same way as $|u_{n\mathbf{k}_i}\rangle$:

$$|\tilde{u}_{n\mathbf{k}_i + \Delta\mathbf{k}_{\alpha}}\rangle = \sum_m^{\text{occ}} [S^{-1}(\mathbf{k}, \mathbf{k} + \Delta\mathbf{k}_{\alpha})]_{mn} |u_{m\mathbf{k}_i + \Delta\mathbf{k}_{\alpha}}\rangle. \quad (33)$$

Equation (30), proposed by Nunes and Gonze,³⁵ corresponds to approximate the Gauge covariant derivative in

Eq. (18) with a finite difference five-point midpoint formula. The truncation error in this expression converges as $\mathcal{O}(\Delta\mathbf{k}^4)$ whereas the three-point midpoint formula proposed in Ref. 22 and used in our previous works^{36,37} converges as $\mathcal{O}(\Delta\mathbf{k}^2)$. Though more cumbersome, we prefer Eq. (30), since we noticed that when using polarization dependent functionals the EOMs are very sensitive to numerical error. To converge the spectra we considered $24 \times 24 \times 24$ mesh for Si and GaAs, $18 \times 18 \times 18$ for AlAs and CdTe.

In the TD-KS equation [Eq. (18)] we introduce a phenomenological dephasing by adding a decay operator

$$R_{n\mathbf{k}}(t) = \frac{1}{\tau_{n\mathbf{k}}} \{ |u_{n\mathbf{k}}(t)\rangle \langle u_{n\mathbf{k}}(t)| - |u_{n\mathbf{k}}^0\rangle \langle u_{n\mathbf{k}}^0| \} \quad (34)$$

where the dephasing time τ can depend on the band and crystal momentum indices. Those parameters take into account memory-effects from missing electron correlation and from the coupling with the “environment” (e.g. defects, phonons) that eventually lead to the finite lifetime of the excitation. Those parameters can be in principle obtained from theory, for example in the context of Green’s function theory they can be obtained from the imaginary part of a self-energy. Here we choose a dephasing time τ independent from the band and crystal momentum indices in such a way to reproduce the broadening of the experimental spectrum. For the nonlinear optical spectra we used a broadening of 0.2 eV equivalent to a dephasing time of 6.58 fs. For the absorption spectra we used a broadening of 0.02 eV equivalent to a dephasing time of about 60 fs, and in the post-processing we applied a further Gaussian broadening of 0.1 eV.

We introduce as well a scissor operator $\Delta H_{\mathbf{k}}^{QP}$ to correct the KS band gap. The value of the scissor correction can be calculated from first principles (e.g. from *GW* calculations³⁸), but in this work we choose the correction so to reproduce the band gap values found in the literature (Table II). Table II reports further the optimal value for α used in the opt-PF approximation as suggested by Botti and co-workers¹². For CdTe—for which to our knowledge there are no time-dependent DFT calculations with the LRC kernel—we use 0.2 which is obtained from the fit proposed in Ref 12 to extract the optimal α from the experimental dielectric constant.³⁹

The final EOM is thus

$$i\partial_t |u_{n\mathbf{k}}(t)\rangle = \left[\mathbf{H}_{\mathbf{k}}^s(t) + \Delta H_{\mathbf{k}}^{QP} + iR_{\mathbf{k}}(t) \right] |u_{n\mathbf{k}}\rangle. \quad (35)$$

We perform real-time simulations using a development version of YAMBO⁴⁰. For the nonlinear optical properties we input a weak monochromatic electric field for a comb of frequencies in the range of interest and we obtain the frequency dependent response functions from the polarization by Fourier inversion formula (see Ref. 36 for details and App. A). For the linear optical properties we input a delta like pulse and obtain the frequency dependent response from the polarization by Fourier transform. The EOMs are integrated using the numerical method

proposed in Ref. 22 and used in previous works^{36,37} with a time-step 0.01 fs.

Par/Sys	Si	GaAs	AlAs	CdTe
α	0.2	0.2	0.35	0.2
Δ (eV)	0.6	0.8	0.9	1.0

TABLE II. Material dependent parameters used in the simulations: the parameter α employed in the opt-PF approximation and the value of the scissor operator.

V. RESULTS

We considered the optical properties of bulk Si, which has a diamond structure, and GaAs, AlAs and CdTe, which have zincblende structure. The two structures are similar, both are face-centered cubic systems with a two atom basis (at the origin, and at 1/4 of the unit cell in each direction). In silicon the two atoms are identical, in the zincblende structures are the different atoms of the II-VI (CdTe) or III-V (GaAs and AlAs) compound. In terms of crystal symmetries this implies that at variance with silicon they miss the inversion symmetry, and therefore have a dipole-allowed SHG. In what follows we study linear and nonlinear optical properties contrasting the standard TD-LDA with the real-time DPFT approach.

A. Optical absorption

The experimental optical spectra on Si⁴¹, GaAs⁴², CdTe⁴³ and AlAs⁴⁴ (Fig. 1, black dashed lines) show qualitative similarities. They all present two main features, a peak at about 3-3.5 eV (referred as E_1) and stronger second peak at 4.5-5.0 eV (referred as E_2). In GaAs and CdTe, containing heavier third/fourth rows atoms, the E_1 peak is split because of the spin-orbit interaction. Note that we do not include spin-orbit in the Kohn-Sham Hamiltonian and therefore we do not reproduce the splitting at any level of the theory.

Figure 1 compares the experimental optical absorption spectra with $-\Im[\chi_{ii}]$ (i.e. the imaginary part of the diagonal of the polarizability tensor, where i is any of the directions x, y, z , see App. A), obtained from the RPA and the TD-LDA (without scissor correction). For the considered systems the two approximations produce very similar spectra. As the only difference between the TD-LDA and the RPA is the microscopic xc potential, one can infer that the effect of the latter is minor as already discussed in the literature.^{2,45} The most striking difference between the experimental and calculated spectra is the onset that is underestimated by 0.5–1.0 eV. When a scissor operator is added (see Table II) the agreement is improved though for Si, GaAs and AlAs the E_2 peak is slightly blue-shifted and more importantly the E_1 peak is either underestimated or appears as a shoulder. Indeed

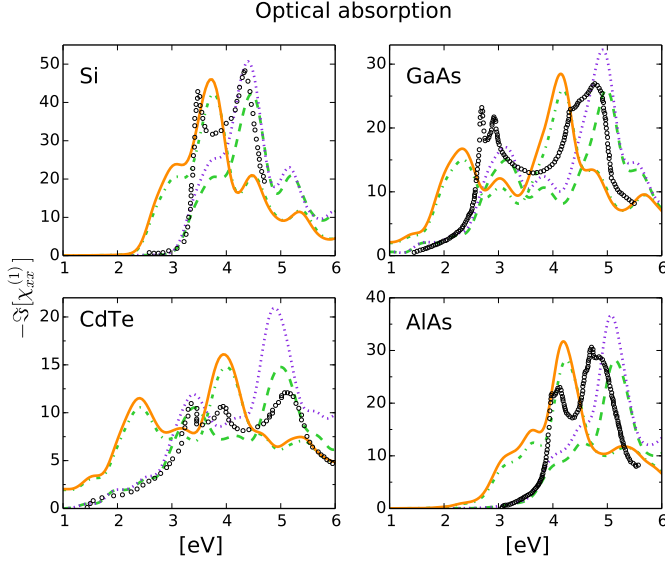


FIG. 1. Optical absorption in bulk Si (top left), GaAs (top right), CdTe (bottom left) and AlAs (bottom right): experimental optical absorption spectra (open circles) are compared with real-time simulations at different levels of approximation: TD-LDA (continuous orange line), RPA (green dash-dotted line), both without the scissor correction, and the IPA (violet dotted line) and RPA (green dashed line) with scissor correction.

the underestimation of the E_1 peak intensity in semiconductor by TD-LDA (and similar TD-DFT approximations) is well known and a signature of missing long-range correlation (see for example Refs. 2, 45–47). Comparison of the RPA spectra and the independent particle approximation (IPA) spectra shows that crystal local fields effects mostly reduces the intensity of the E_2 peak by 15–25%. The experimental optical spectrum of CdTe is well caught within the RPA, but for the overestimation of the E_2 peak intensity.

Figure 2 shows the effects of the macroscopic xc field that is added through the approximated PFs discussed in Sec. III. For Si, GaAs and AlAs a clear improvement is observed for the opt-PF: both intensity and position of the peaks are reproduced reasonably well. For CdTe adding the xc macroscopic field lead to an overestimation of the E_1 peak intensity which was well caught within the RPA. On the other hand the E_1/E_2 intensity ratio is better reproduce by the PFs than within RPA. For the JGM-PF the agreement is in general less satisfactorily. In particular for Si the E_1 peak intensity is still visibly underestimated, while for AlAs it is overestimated. The main difference between the two approximation is the value of α : in the opt-PF, α is a parameter optimized to reproduce the optical spectra; in the JGM-PF α is determined from the jellium with a gap model. The model does not reproduce the optimal value. For Si, $\alpha^{\text{JGM}} \approx 0.11$ and for AlAs $\alpha^{\text{JGM}} \approx 0.52$ respectively smaller and larger than the optimal value reported in Table II.

It is worth to notice that the xc macroscopic field in the JGM-PF has as well a microscopic contribution. For

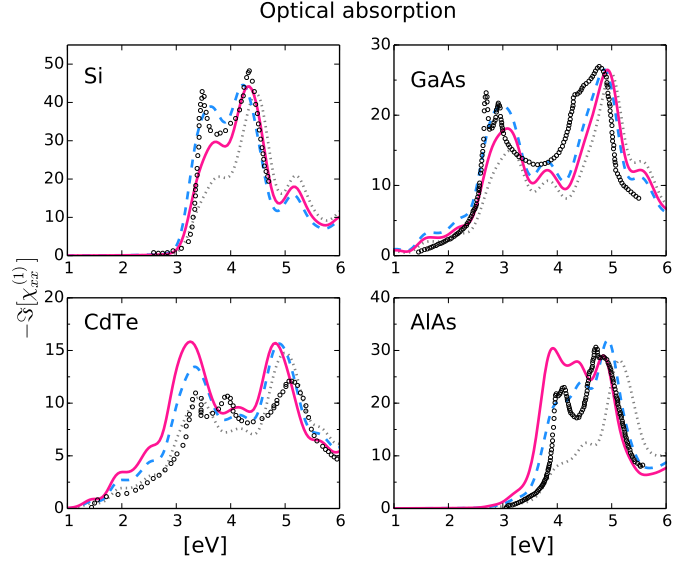


FIG. 2. Optical absorption in bulk Si (top left), GaAs (top right), CdTe (bottom left) and AlAs (bottom right): experimental optical absorption spectra (open circles) are compared with real-time simulations at different levels of approximation: opt-PF (blue dashed line), JGM (pink continuous line), RPA(gray dotted line). All approximations include the scissor operator correction.

AlAs this contribution is singled out in the right panel of Fig. 5 where it is shown to reduce slightly the absorption. For silicon (not shown) the microscopic contribution to the macroscopic field is negligible.

B. Effect of xc macroscopic field on optical absorption

It is interesting to analyze how an apparently simple approximation for the xc macroscopic field such as the $\alpha\mathcal{P}$ (in the opt-PF and JGM-PF) correctly “distinguishes” where to increase the optical absorption spectrum at RPA level. This information is “encoded” in the macroscopic polarization. In fact, in the linear response limit the effective Kohn-Sham electric field within the proposed PF approximations takes the form

$$\mathcal{E}^s(\omega) = (1 - \alpha \underline{\chi}(\omega)) \mathcal{E}^{\text{tot}}(\omega).$$

That is, the intensity of the applied field is either amplified or reduced depending on the sign of $\Re[\chi_{ii}(\omega)]$ since $\Im[\chi_{ii}(\omega)] \geq 0$ for any positive ω . In Fig. 3 (upper panel) we see that indeed the sign of $-\Re[\chi_{ii}^0(\omega)]$ (the real part of the RPA macroscopic response function) follows closely that of the correction induced by xc macroscopic contribution $-\alpha\mathcal{P}$ which has been calculated by subtracting the optical absorption obtained by the RPA, $\Im[\chi_{ii}^0]$, from the optical absorption obtained by opt-PF, $\Im[\chi_{ii}]$. To gain an insight on how the sign of $\Re[\chi_{ii}^0]$ is linked to the localization of the excitation we consider the phasor representation of $\chi_{ii}^0(\omega) = |\chi_{ii}^0(\omega)| \exp(i\phi)$: the com-

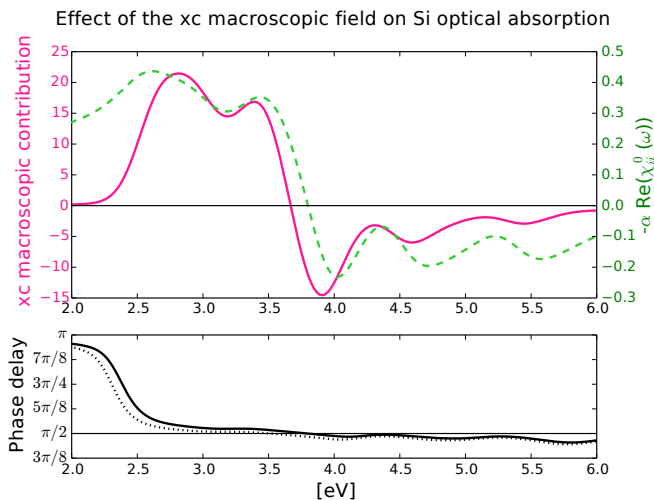


FIG. 3. Upper panel: Contribution of the macroscopic xc field to the optical spectrum of Si calculated as the difference between the the opt-PF and the RPA optical absorption spectra (pink continuous line) compared with $-\alpha\Re(\chi_{ii}^0)$ (green dashed line). Bottom panel: phase delay ϕ between the polarization and the applied electric field as a function of the applied field frequency at the RPA (dotted line) and opt-PF (continuous line) level of approximation. The horizontal line highlight the $\phi = \pi/2$ delay. See text.

plex argument ϕ (see bottom panel of Fig. 3) gives the phase delay between \mathcal{P} and \mathcal{E} . In particular a delay of $\phi = \pi/2$ corresponds to in-phase oscillation of the macroscopic polarization current $\mathcal{J} = -\partial\mathcal{P}/\partial t$ with \mathcal{E} . Where the optical absorption is negligible those oscillations are plasmons; where instead it is non-negligible they can be considered as a signature of delocalized excitations (note that in fact the optical absorption has a maximum at $\phi = \pi/2$). Heuristically, for more localized excitations we may expect a phase delay larger than $\pi/2$, and for delocalized excitations a phase delay smaller than $\pi/2$.

Then, the $\cos\phi$, and $\Re(\chi_{ii})$ which is proportional to it, are negative for localized excitations and positive for the more delocalized ones. A correction proportional to $-\Re(\chi_{ii})$ then increases the absorption in correspondence of more localized excitation and decreases it for more delocalized excitations. Note as well that in the RPA the phase delay is overestimated. Then the absorption, proportional to $\sin\phi$ is too small for $\phi > \pi/2$ (localized excitation) and too large for $\phi < \pi/2$ (delocalized excitation).

C. SHG of GaAs, AlAs and CdTe

In zincblende structures the only independent non-zero SHG component⁵² is $\chi_{xyz}^{(2)}$ (or its equivalent by permutation). The module of the calculated $\chi_{xyz}^{(2)}$ for the systems under study is reported in Fig. 4 and compared with experimental values where available. Note that when the energies are not corrected by a scissor (left panel) for

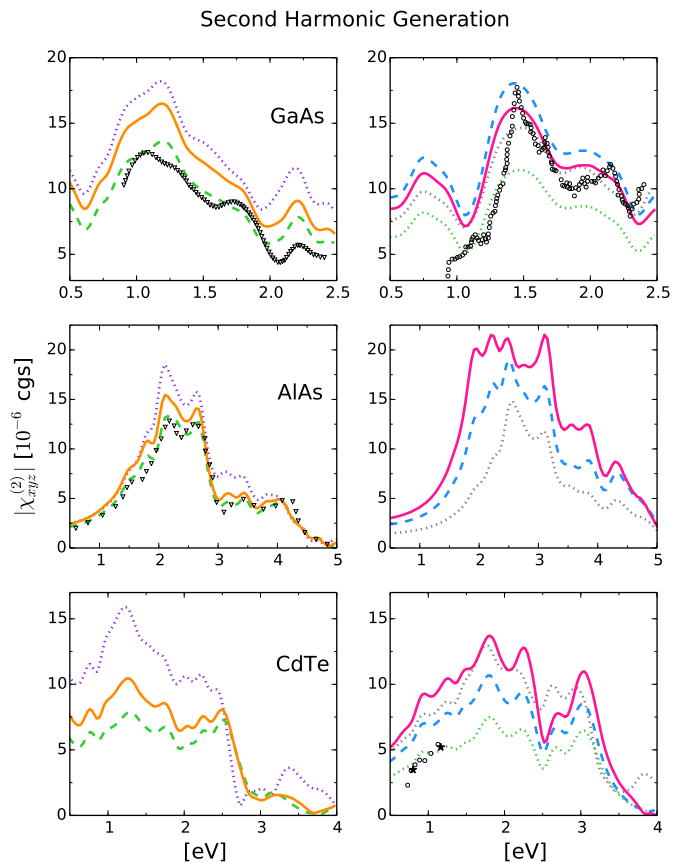


FIG. 4. SHG spectra of GaAs (top panels), AlAs (middle panels) and CdTe (bottom panels) obtained from real-time simulations at different levels of approximation. Left panels: IPA (dotted violet), RPA (dashed green) and TD-LDA (continuous orange)—all without scissor operator correction. For comparison we included the RPA spectrum of GaAs and AlAs calculated by Luppi et al.⁴⁸ (open triangles). Right panels: opt-PF (dashed blue) and JGM-PF (continuous pink) are compared with IPA (dotted gray) and RPA for CdTe and GaAs. Available experimental results are shown for GaAs (open circles)⁴⁹ and CdTe (open circles⁵⁰ and stars⁵¹).

both GaAs and CdTe a large part of the energy range of the SH spectra is in the absorption region where both one-photon and two-photon resonances contribute to the intensity. For AlAs the part of the SH spectra below 2 eV is instead in the transparency region of the material (only two-photon contributions). When the scissor-correction to the energy is applied (right panel), the transparency region for GaAs and CdTe is below 1 eV and for CdTe below 3 eV. In the transparency region only two-photon resonances contribute. Comparing the TD-LDA with the RPA and the independent particle (IP) spectra (left panel) shows that crystal local field effects (that tend to reduce the overall SH intensity) are partially compensated by the microscopic xc effects (that tend to increase the SH intensity). In general both effects are relatively stronger than for the optical absorption. Applying the scissor correction does not correspond to a simple shift (like in the optical absorption case) but changes the spec-

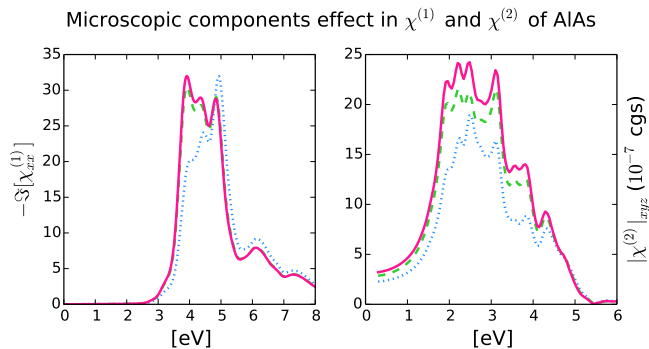


FIG. 5. Effect of microscopic components in the JGM-PF on the optical absorption (right panel) and SHG (left panel) of AlAs. The plots compare JGM-PF spectra with (green dashed line) and without microscopic effects (magenta continuous line) and the opt-PF (blue dotted line).

tra. Firstly the SH intensity is reduced overall (because of sum rules), secondly the intensity is redistributed as the scissor modifies the relative position of one-photon and two-photon resonances (that are shifted by a half of the scissor value). For GaAs and CdTe the addition of macroscopic correlation through the approximated PF leads to an enhancement of about 40% in GaAs and 80% in CdTe with respect to the RPA. On the other hand as discussed for those systems local field effects are very large and in fact the spectra from the PF are not significantly different than at the IP level, meaning an almost exact cancellation of the crystal local effects and the macroscopic xc effects as describe by the approximated PFs. Only in the case of AlAs, the macroscopic correlation enhances significantly the SH, adds features and redistributes relative weights with respect to the IP approximation.

Regarding the comparison with experiment (right panel), in GaAs the peak at 1.5 eV and the feature at 2.2 eV in the experimental SHG are fairly reproduced by the opt-PF and JGM-PF approximations. All approximations significantly overestimate the SH for energies below 1 eV. A similar breakdown of the opt-PF approximation (that within the response theory context corresponds with the long-range corrected kernel) has been observed by Luppi and coworkers and traced back to the errors in the theoretical macroscopic dielectric function.⁵³ For CdTe, the approximation that is closer to experimental results (which however are available only around 1 eV) is the RPA while both PF approximations overestimate the experimental SH. This is consistent with the results for optical absorption for which the RPA gives the best agreement among all approximations considered.

We have also compared our results from real-time simulations with those obtained from a response approach by Luppi and co-workers⁵³ and we found a good agreement, slightly better than our previous work³⁶ thanks to the higher order approximation for the covariant derivative [Eq. (30)]. In the left panel of Fig. 4 we show for example

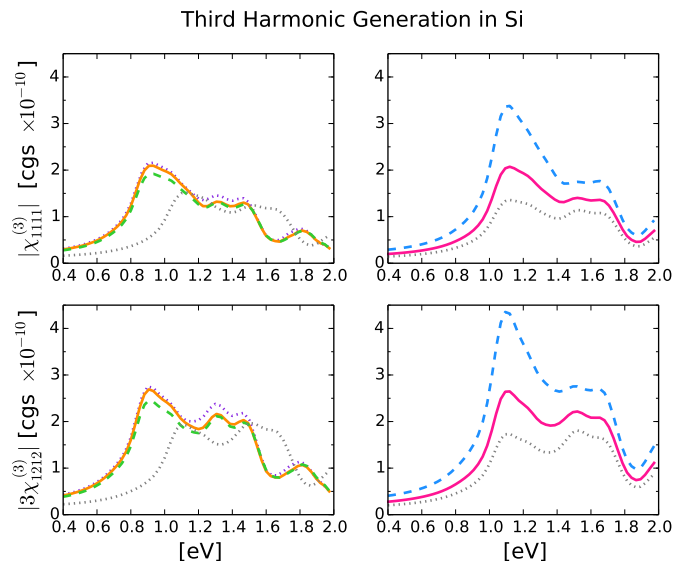


FIG. 6. THG of Si: $|\chi_{1111}^{(3)}|$ and $|3\chi_{1212}^{(3)}|$ components (see text). Spectra obtained from real-time simulations at different levels of approximation. Left panels: TD-LDA (continuous orange line), RPA (green dashed line), IPA (dotted violet line) without scissor operator correction are compared with and IPA (gray dotted line) with scissor operator correction. Right panels: JGM-PF (continuous pink line), opt-PF (blue dashed line) and RPA (gray dotted line) with scissor operator correction.

the comparison for the RPA. There is a very good correspondence between the two spectra for AlAs. For GaAs there are small, but still visible differences which we argue are due to the different pseudopotentials used. In fact we obtain a similar variation in our results when repeating the calculations with different pseudopotentials. It is known that SHG is very sensitive to changes in the electronic structure and that is turn changes when using different pseudopotentials. This is particularly true in the case of GaAs and the sensitivity on the pseudopotential choice was also observed in the referenced calculations. Note that in the pseudopotentials we used d orbitals are considered as core electrons, whereas they are included as valence electrons in the calculation of Luppi and coworkers.⁵³ On the other hand pseudopotentials including d electrons that we were testing did not provide a much better agreement.

D. THG of Si

The THG for Si has two independent components, $\chi_{1212}^{(3)} \equiv \chi_{xyxy}^{(3)}$ and $\chi_{1111}^{(3)} \equiv \chi_{xxxx}^{(3)}$. In the expression for the TH polarization along the direction i ,

$$P_i(3\omega) = 3\chi_{1212}^{(3)}\epsilon_i(\omega)|\epsilon(\omega)|^2 + (\chi_{1111}^{(3)} - 3\chi_{1212}^{(3)})\epsilon_i^3(\omega),$$

$3\chi_{1212}^{(3)}$ is the isotropic contribution, while $\chi_{1111}^{(3)}$ the anisotropic contribution. Figure 6 shows the calculations for $A = |\chi_{1111}^{(3)}|$ and $B = |3\chi_{1212}^{(3)}|$, the modules

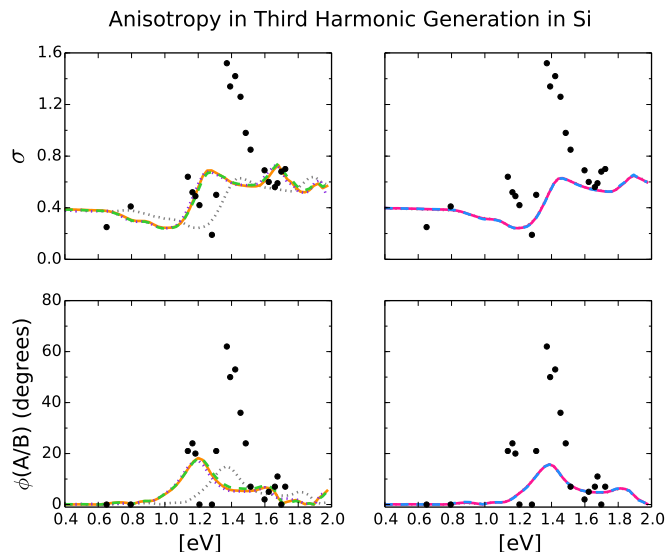


FIG. 7. THG of Si: anisotropy parameters σ and ϕ (see text). Experimental data (open circles)⁵⁴ compared with results obtained from real-time simulations at different levels of approximation. Left panels: TD-LDA (continuous orange line), RPA (green dashed line), IPA (dotted violet line) without scissor operator correction are compared with the IPA (gray dotted line) with scissor operator correction. Right panels: JGM-PF (continuous pink line), opt-PF (blue dashed line) and RPA (gray dotted line) with scissor operator correction.

of the 1111 and 1212 components of the THG of Si.⁵⁴ The TD-LDA spectra (left panels) both present two main features, a peak around 0.9 eV (three-photon resonance with E_1) and a shoulder around 1.4 eV (three-photon resonance with E_2). Both features are more intense and pronounced in the $|3\chi_{1212}^{(3)}|$. Results within TD-LDA resemble closely those obtained within the RPA and IP approximation. For the E_1 three-photon resonance the microscopic xc effects cancel with the local-field effects, so that TD-LDA almost coincides with the IP approximation. For higher energies instead, the TD-LDA and RPA spectra are practically identical. Applying a scissor operator does not simply shift the peaks by an amount of about 1/3 of the scissor value. The overall intensity of the spectra is reduced (as expect from sum rules) and as well the relative intensity of the E_1/E_2 resonances changes. Specifically the ratio is close to or even smaller than 1 in the scissor corrected spectra, while is $\approx 1.2 - 1.3$ in the uncorrected spectra. The macroscopic xc field introduced with the approximations for the PF (right panels) enhances the intensity of the spectra and as well the E_1/E_2 ratio. Consistently with what observed for the linear response the largest α (opt-PF for silicon) produces the largest correction.

Experimental measurements are available for the ratio R_1 between the THG signal obtained with 45 and 0 incident angles and for the ratio R_2 between the THG signal obtained with circularly polarized light and linearly polarized light at 0 incident angle. From those

measurements then $\sigma = |1 - B/A|$ and the phase $\phi(B/A)$ can be deduced.⁵⁴ The experimental results are reported in Fig. 7. Both σ and $\phi(A/B)$ present two features at about 1.1 eV and 1.4 eV in correspondence of the three-photon E_1 and E_2 resonances. All the theoretical results are very similar irrespective of the approximation used and the differences observed for the $A = |\chi_{1111}^{(3)}|$ and $B = |3\chi_{1212}^{(3)}|$ in Fig. 6. The results from the scissor corrected approximations (right panels) are just shifted by 1/3 of the scissor operator. When compared with the experiment all the approximation reasonably reproduce the behavior at energies lower than 1 eV. However for both σ and $\phi(A/B)$ (we consider here only the scissor corrected approximations which have resonances at the correct energies) the peak in correspondence of the E_1 resonance is missing and the feature in correspondence of the E_2 resonance much less pronounced than in experiment. When compared with calculations from Moss and coworkers⁵⁵ at the independent particle level from the electronic structure calculated either with empirical tight-binding and semi-ab-initio band-structure techniques, the intensity we found for A and B are similar to the latter, but the main spectral features are similar to the former. To notice that the THG based on empirical tight-binding shows in the σ and ϕ spectra a peak at 1.1 eV.

VI. SUMMARY AND CONCLUSIONS

We have implemented a real-time density functional approach suitable for infinite periodic crystals in which we work within the so-called length gauge and calculate the polarization as a dynamical Berry phase.²² This approach, in addition to the electron density considers also the macroscopic polarization as a main variable and extends to the time-dependent case the DPFT introduced in the nineties^{7,18-20} to correctly treat IPC in electric fields within a density functional framework. In the corresponding time-dependent KS equations next to the microscopic xc potential also appears a macroscopic xc electric field which is a functional of the macroscopic polarization (and eventually of the microscopic density). We have derived approximations for the xc electric field exploiting the connection with long-range corrected approximations for xc kernel within the linear response theory. We have considered two approximations, the optimal polarization functional, linked to the long-range corrected xc kernel proposed on Ref. 12 and the Jellium with a gap model polarization functional linked to the analogous approximation for the xc kernel.¹³ We have applied this approach, that we refer to as real-time DPFT, to calculate the optical absorption, second and third harmonic generation in different semiconductors (Si, GaAs, AlAs and CdTe). We have compared results with “standard” real-time TD-DFT, namely without macroscopic xc effects, and to experimental results where available. The general trend is an overall improvement over standard TD-DFT

as to be expected from the results obtained within the response framework.¹² Of the considered approximations, the opt-PF provides the best agreement with the experiment.

The approach here proposed combines the flexibility of a real-time approach, with the efficiency of DPFT in capturing long-range correlation. It allows calculations beyond the linear regime (e.g. second- and third-harmonic generation, four-wave mixing, Fourier spectroscopy or pump-probe experiments) that includes excitonic effects. It is an alternative approach to real-time TD-DFT for extended system proposed by Bertsch, Rubio and Yabana.⁵⁶ At variance with our approach the latter uses the velocity gauge—which has the advantage of using the velocity operator that is well defined in periodic systems—rather than the position operator that requires special attention. On the other hand, although this approach have shown promising results,^{57,58} it turns to be quite cumbersome for studying response functions beyond the linear regime due to the presence of divergences that in principle should cancel, but that are difficult to treat numerically.⁵⁹ Furthermore non-local operators—such as pseudo-potentials or the scissor operator—are cumbersome to treat in velocity gauge⁶⁰ while they are trivial in length gauge.

Similarly to any density-functional approaches, a delicate point is the approximation of the xc effects. In addition to the xc potential as in standard DFT, in this approach we also need an approximation for the macroscopic xc field. Though for the systems here studied the opt-PF approximation seems to work well, such a good performance cannot be expected in general. For example, based on the experience from linear response calculations, this approximation is not expect to work very well for large gap insulators or systems with a reduced dimensionality (e.g. nanostructures or layers) in which the electronic screening is small.⁶¹ Furthermore, in the opt-PF the α is chosen has a material dependent parameter rather than obtained from first-principles. In this respect within the other approximation here studied, JGM-PF, α is determined from first-principles but not always has the optimal value. Further studies then should try to develop universal approximations to the polarization functional, possibly going beyond the linear response formulation that was here used in the derivation of the polarization functionals.

VII. ACKNOWLEDGMENTS

This work used the computing facilities of the Atomistic Simulation Centre–Queen’s University Belfast, of the CINaM Aix-Marseille Université, of the ARCHER UK National Supercomputing Service (<http://www.archer.ac.uk>) through EPSRC grant EP/K0139459/1 allocated to the UKCP Consortium, and of the “Curie” national GENGI-IDRIS supercomputing center under contract No. x2012096655. CA acknowl-

edges EUSpec Cost Action MP1306. DS acknowledges the *Futuro in Ricerca* grant No. RBFR12SW0J of the Italian Ministry of Education, University and Research MIUR, the European Union project MaX *Materials design at the eXascale* H2020-EINFRA-2015-1, Grant agreement n. 676598 and *Nanoscience Foundries and Fine Analysis - Europe* H2020-INFRAIA-2014-2015, Grant agreement n. 654360.

Appendix A: Induced field and response functions

One of the objectives of atomistic simulations is the calculation of the macroscopic dielectric function or of related response functions of dielectrics. Within TD-DFT such goal is achieved via the calculations of the microscopic density–density response function $\tilde{\chi}^{\rho\rho}$, defined via the equation

$$\delta n_{\mathbf{G}}(\mathbf{q}, \omega) = \tilde{\chi}_{\mathbf{G}\mathbf{G}'}^{\rho\rho}(\mathbf{q}, \omega) \delta v_{\mathbf{G}'}^{\text{ext}}(\mathbf{q}, \omega). \quad (\text{A1})$$

Here \mathbf{G} are the reciprocal lattice vectors and ω the frequency obtained from the Fourier transforms $\mathbf{r} \rightarrow \mathbf{G}$ and $t \rightarrow \omega$. In addition to $\tilde{\chi}^{\rho\rho}$, the irreducible response function $\chi^{\rho\rho}$ and the auxiliary response function $\bar{\chi}^{\rho\rho}$ can be defined via

$$\delta n_{\mathbf{G}}(\mathbf{q}, \omega) = \chi_{\mathbf{G}\mathbf{G}'}^{\rho\rho}(\mathbf{q}, \omega) \delta v_{\mathbf{G}'}^{\text{tot}}(\mathbf{q}, \omega) \quad (\text{A2})$$

$$\delta n_{\mathbf{G}}(\mathbf{q}, \omega) = \bar{\chi}_{\mathbf{G}\mathbf{G}'}^{\rho\rho}(\mathbf{q}, \omega) [\delta v_{\mathbf{G}'}^{\text{ext}}(\mathbf{q}, \omega) + \delta \bar{v}_{\mathbf{G}'}^{\text{H}}(\mathbf{q}, \omega)] \quad (\text{A3})$$

To linear order and at finite momentum (i.e. $\mathbf{q} \neq \mathbf{0}$), the longitudinal microscopic dielectric function can be derived from the response functions,

$$\epsilon_{\mathbf{G}\mathbf{G}'}^{-1}(\mathbf{q}, \omega) = \delta_{\mathbf{G},\mathbf{G}'} + 4\pi \frac{\tilde{\chi}_{\mathbf{G}\mathbf{G}'}^{\rho\rho}(\mathbf{q}, \omega)}{|\mathbf{q} + \mathbf{G}'||\mathbf{q} + \mathbf{G}'|}, \quad (\text{A4})$$

$$\epsilon_{\mathbf{G}\mathbf{G}'}(\mathbf{q}, \omega) = \delta_{\mathbf{G},\mathbf{G}'} - 4\pi \frac{\chi_{\mathbf{G}\mathbf{G}'}^{\rho\rho}(\mathbf{q}, \omega)}{|\mathbf{q} + \mathbf{G}'||\mathbf{q} + \mathbf{G}'|}. \quad (\text{A5})$$

The longitudinal macroscopic dielectric function can then be obtained as $\epsilon_M(\mathbf{q}, \omega) = 1/\epsilon_{\mathbf{0}\mathbf{0}}^{-1}(\mathbf{q}, \omega)$. Absorption experiment however are described at $\mathbf{q} = \mathbf{0}$ where the dielectric function $\epsilon_M(\omega) \equiv \epsilon_M(\mathbf{0}, \omega)$ can be obtained only via a limiting process. They are defined as

$$\epsilon_M(\omega) = \left[1 + 4\pi \lim_{\mathbf{q} \rightarrow \mathbf{0}} \frac{\tilde{\chi}_{\mathbf{0}\mathbf{0}}^{\rho\rho}(\mathbf{q}, \omega)}{|\mathbf{q}|^2} \right]^{-1} \quad (\text{A6})$$

$$\epsilon_M(\omega) = 1 - 4\pi \lim_{\mathbf{q} \rightarrow \mathbf{0}} \frac{\bar{\chi}_{\mathbf{0}\mathbf{0}}^{\rho\rho}(\mathbf{q}, \omega)}{|\mathbf{q}|^2}. \quad (\text{A7})$$

As we observed in the introduction this approach is at least problematic in real-time simulation, where it is numerically more convenient to directly work at $\mathbf{q} = \mathbf{0}$ and thus the density–density response function cannot be used.

Within DPFT the key quantity is the one which relates the macroscopic electric field \mathcal{E}^{tot} or \mathcal{E}^{ext} to the first order polarization $\mathcal{P}^{(1)}$.

$$\mathcal{P}^{(1)}(\omega) = \underline{\tilde{\chi}}(\omega) \mathcal{E}^{\text{ext}}(\omega) \quad (\text{A8})$$

$$\mathcal{P}^{(1)}(\omega) = \underline{\chi}(\omega) \mathcal{E}^{\text{tot}}(\omega). \quad (\text{A9})$$

$\underline{\underline{\chi}}(\omega) = \underline{\underline{\chi}}^{(1)}(\omega)$ is the (first-order) polarizability; $\tilde{\underline{\underline{\chi}}}(\omega) = \underline{\underline{\chi}}^{(1)}(\omega)$ is the quasi-polarizability. Since we obtain the polarizability dividing the Fourier transform of the time-dependent polarization by the input electric field, we obtain either $\tilde{\underline{\underline{\chi}}}(\omega)$ or $\underline{\underline{\chi}}(\omega)$ depending on whether we assume $\mathcal{E}^{\text{inp}} = \mathcal{E}^{\text{ext}}$ or $\mathcal{E}^{\text{inp}} = \mathcal{E}^{\text{tot}}$. Notice that in this framework we have already made the distinction between macroscopic fields, described in terms of $\mathcal{E}^{\text{ext}}/\mathcal{E}^{\text{tot}}$, and microscopic ones, described in terms of $\bar{v}^{\text{tot}}/\bar{v}^{\text{tot}}$. $\tilde{\underline{\underline{\chi}}}(\omega)$ and $\underline{\underline{\chi}}(\omega)$ are thus macroscopic functions. The longitudinal dielectric function can be obtained, to first order in the field, as

$$\epsilon_M(\omega) = [1 + \tilde{\chi}_{ii}(\omega)]^{-1}, \quad (\text{A10})$$

$$\epsilon_M(\omega) = 1 - \chi_{ii}(\omega), \quad (\text{A11})$$

where $\tilde{\chi}_{ii}$ is any of the diagonal components of $\underline{\underline{\chi}}$.

More in general the n -order polarization can be expressed as

$$\mathcal{P}^{(n)}(t) = \int dt_1 \dots dt_n \times \underline{\underline{\chi}}^{(n)}(t - t_1, \dots, t - t_n) \times \mathcal{E}^{\text{tot}}(t_1) \dots \mathcal{E}^{\text{tot}}(t_n), \quad (\text{A12})$$

where $\underline{\underline{\chi}}^{(n)}$ is the n -order polarizability related to n -order nonlinear optical properties. Also here we could define the $\tilde{\underline{\underline{\chi}}}^{(n)}$ as the response to the external field. The two can be related from the equation

$$\tilde{\underline{\underline{\chi}}}^{(n)}(\omega) = \underline{\underline{\chi}}^{(n)}(\omega)(1 - \underline{\underline{\chi}}^{(1)})^n \quad (\text{A13})$$

As for the linear case we obtain either $\tilde{\underline{\underline{\chi}}}^{(n)}(\omega)$ or $\underline{\underline{\chi}}^{(n)}(\omega)$ depending on whether we assume $\mathcal{E}^{\text{inp}} = \mathcal{E}^{\text{ext}}$ or $\mathcal{E}^{\text{inp}} = \mathcal{E}^{\text{tot}}$. However, since usually $\underline{\underline{\chi}}^{(n)}(\omega)$ is the quantity considered in the literature the last choice is more convenient in nonlinear optics.

-
- ¹ E. Runge and E. K. U. Gross, Phys. Rev. Lett. **52**, 997 (1984).
² S. Botti, A. Schindlmayr, R. Del Sole, and L. Reining, Reports on Progress in Physics **70**, 357 (2007).
³ N. T. Maitra, I. Souza, and K. Burke, Physical Review B **68**, 045109 (2003).
⁴ S. K. Ghosh and A. K. Dhara, Phys. Rev. A **38**, 1149 (1988).
⁵ L. Reining, V. Olevano, A. Rubio, and G. Onida, Phys. Rev. Lett. **88**, 066404 (2002).
⁶ R. M. Martin, Phys. Rev. B **9**, 1998 (1974).
⁷ X. Gonze, P. Ghosez, and R. Godby, Physical Review Letters **74**, 4035 (1995).
⁸ Y. Takimoto, F. D. Vila, and J. J. Rehr, The Journal of Chemical Physics **127**, 154114 (2007).
⁹ K.-M. Lee, C. M. Kim, S. A. Sato, T. Otobe, Y. Shinohara, K. Yabana, and T. M. Jeong, Journal of Applied Physics **115**, 053519 (2014).
¹⁰ T. Otobe, Y. Shinohara, S. Sato, and K. Yabana, arXiv preprint arXiv:1504.01458 (2015).
¹¹ J. A. Berger, Phys. Rev. Lett. **115**, 137402 (2015).
¹² S. Botti, F. Sottile, N. Vast, V. Olevano, L. Reining, H.-C. Weissker, A. Rubio, G. Onida, R. Del Sole, and R. Godby, Physical Review B **69**, 155112 (2004).
¹³ P. E. Trevisanutto, A. Terentjevs, L. A. Constantin, V. Olevano, and F. Della Sala, Physical Review B **87**, 205143 (2013).
¹⁴ D. H. Kobe, American Journal of Physics **50**, 128 (1982).
¹⁵ E. Blount, in *Solid State Physics, Advances in Research and Applications*, edited by F. Seitz and D. Turnbull (Academic New York, 1962).
¹⁶ R. Resta, Rev. Mod. Phys. **66**, 899 (1994).
¹⁷ R. D. King-Smith and D. Vanderbilt, Phys. Rev. B **47**, 1651 (1993).
¹⁸ R. Resta, Physical Review Letters **77**, 2265 (1996).
¹⁹ D. Vanderbilt, Physical Review Letters **79**, 3966 (1997).
²⁰ R. Martin and G. Ortiz, Physical Review B **56**, 1124 (1997).
²¹ P. Umari and A. Pasquarello, International Journal of Quantum Chemistry **101**, 666 (2005).
²² I. Souza, J. Íñiguez, and D. Vanderbilt, Phys. Rev. B **69**, 085106 (2004).
²³ K. Yabana, T. Sugiyama, Y. Shinohara, T. Otobe, and G. F. Bertsch, Phys. Rev. B **85**, 045134 (2012).
²⁴ M. A. Marques, M. J. Oliveira, and T. Burnus, Computer physics communications **183**, 2272 (2012).
²⁵ W. G. Aulbur, L. Jönsson, and J. W. Wilkins, Physical Review B **54**, 8540 (1996).
²⁶ In general the expression of the xc electric field in terms of \vec{F}^{xc} is an integral along a path in the infinite dimensional space of the densities/macroscopic polarizations. Such integral does not depend on the path if \vec{F}^{xc} is defined as a functional derivative of some function. Furthermore here we consider the case where \vec{F}^{xc} is a local (or semi-local) functional. Then the infinite dimensional integral reduces to a simple three-dimensional integral which, in reciprocal space, can be represented as a sum over the \mathbf{G} vectors.
²⁷ S. Botti, A. Fourreau, F. m. c. Nguyen, Y.-O. Renault, F. Sottile, and L. Reining, Phys. Rev. B **72**, 125203 (2005).
²⁸ S. Rigamonti, S. Botti, V. Veniard, C. Draxl, L. Reining,

- and F. Sottile, Phys. Rev. Lett. **114**, 146402 (2015).
- ²⁹ S. Sharma, J. K. Dewhurst, A. Sanna, and E. K. U. Gross, Phys. Rev. Lett. **107**, 186401 (2011).
- ³⁰ M. Corradini, R. Del Sole, G. Onida, and M. Palummo, Phys. Rev. B **57**, 14569 (1998).
- ³¹ X. Gonze *et al.*, Computational Materials Science **25**, 478 (2002).
- ³² N. Troullier and J. L. Martins, Phys. Rev. B **43**, 1993 (1991).
- ³³ D. R. Hamann, Phys. Rev. B **40**, 2980 (1989).
- ³⁴ H. J. Monkhorst and J. D. Pack, Phys. Rev. B **13**, 5188 (1976).
- ³⁵ R. W. Nunes and X. Gonze, Phys. Rev. B **63**, 155107 (2001).
- ³⁶ C. Attaccalite and M. Grüning, Physical Review B **88**, 235113 (2013).
- ³⁷ M. Grüning and C. Attaccalite, Phys. Rev. B **89**, 081102 (2014).
- ³⁸ F. Aryasetiawan and O. Gunnarsson, Reports on Progress in Physics **61**, 237 (1998).
- ³⁹ J. Singh *et al.*, *Physics of Semiconductors and their Heterostructures*, Vol. 84 (McGraw-Hill New York, 1993).
- ⁴⁰ A. Marini, C. Hogan, M. Gruning, and D. Varsano, Comp. Phys. Comm. **180**, 1392 (2009).
- ⁴¹ P. Lautenschlager, M. Garriga, L. Vina, and M. Cardona, Phys. Rev. B **36**, 4821 (1987).
- ⁴² P. Lautenschlager, M. Garriga, S. Logothetidis, and M. Cardona, Phys. Rev. B **35**, 9174 (1987).
- ⁴³ S. Adachi, T. Kimura, and N. Suzuki, Journal of Applied Physics **74** (1993).
- ⁴⁴ M. Garriga, M. Kelly, and K. Ploog, Thin solid films **233**, 122.
- ⁴⁵ G. Onida, L. Reining, and A. Rubio, Reviews of Modern Physics **74** (2002).
- ⁴⁶ W. Hanke and L. J. Sham, Phys. Rev. Lett. **43**, 387 (1979).
- ⁴⁷ W. Hanke and L. J. Sham, Phys. Rev. B **21**, 4656 (1980).
- ⁴⁸ E. Luppi, H. Hübener, and V. Véniard, Phys. Rev. B **82**, 235201 (2010).
- ⁴⁹ S. Bergfeld and W. Daum, Physical review letters **90**, 036801 (2003).
- ⁵⁰ I. Shoji, T. Kondo, A. Kitamoto, M. Shirane, and R. Ito, J. Opt. Soc. Am. B **14**, 2268 (1997).
- ⁵¹ J. I. Jang, S. Park, D. J. Clark, F. O. Saouma, D. Lombardo, C. M. Harrison, and B. Shim, J. Opt. Soc. Am. B **30**, 2292 (2013).
- ⁵² R. W. Boyd, in *Nonlinear Optics (Third Edition)*, edited by R. W. Boyd (Academic Press, Burlington, 2008) third edition ed., pp. 1 – 67.
- ⁵³ E. Luppi, H. Hübener, and V. Véniard, Physical Review B **82**, 1 (2010).
- ⁵⁴ D. J. Moss, H. M. van Driel, and J. E. Sipe, Opt. Lett. **14**, 57 (1989).
- ⁵⁵ D. Moss, E. Ghahramani, J. Sipe, and H. van Driel, Physical Review B **41**, 1542 (1990).
- ⁵⁶ G. F. Bertsch, J.-I. Iwata, A. Rubio, and K. Yabana, Phys. Rev. B **62**, 7998 (2000).
- ⁵⁷ K. Yabana, T. Sugiyama, Y. Shinohara, T. Otobe, and G. Bertsch, Physical Review B **85**, 045134 (2012).
- ⁵⁸ V. A. Goncharov, The Journal of chemical physics **139**, 084104 (2013).
- ⁵⁹ C. Aversa and J. E. Sipe, Phys. Rev. B **52**, 14636 (1995).
- ⁶⁰ M. Tokman, Physical Review A **79**, 053415 (2009).
- ⁶¹ F. Sottile, K. Karlsson, L. Reining, and F. Aryasetiawan, Phys. Rev. B **68**, 205112 (2003).