



HAL
open science

Electrical characterization of Calcium Aluminate (CA) in presence of chloride ions

Marcela Torres-Luque, Johann F. Osma, Mauricio Sánchez-Silva, Emilio Bastidas-Arteaga, Franck Schoefs

► **To cite this version:**

Marcela Torres-Luque, Johann F. Osma, Mauricio Sánchez-Silva, Emilio Bastidas-Arteaga, Franck Schoefs. Electrical characterization of Calcium Aluminate (CA) in presence of chloride ions. 14th International Congress on the Chemistry of Cement, 2015, Pékin, China. hal-01316411

HAL Id: hal-01316411

<https://hal.science/hal-01316411v1>

Submitted on 20 May 2016

HAL is a multi-disciplinary open access archive for the deposit and dissemination of scientific research documents, whether they are published or not. The documents may come from teaching and research institutions in France or abroad, or from public or private research centers.

L'archive ouverte pluridisciplinaire **HAL**, est destinée au dépôt et à la diffusion de documents scientifiques de niveau recherche, publiés ou non, émanant des établissements d'enseignement et de recherche français ou étrangers, des laboratoires publics ou privés.

Electrical characterization of Calcium Aluminate (CA) in presence of chloride ions

M. Torres-Luque^{1*}, J.F. Osma², M. Sánchez-Silva¹, E. Bastidas-Arteaga³, F. Schoefs³

1. Department of Civil and Environmental Engineering, Universidad de Los Andes, Bogotá, Colombia
2. CMUA, Department of Electrical and Electronics Engineering, Universidad de Los Andes, Bogotá, Colombia
3. GeM UNR, Institut de recherche en génie civil et mécanique, Université de Nantes, Nantes, France

Abstract

Chloride ingress is one of the major causes of reinforced concrete degradation. Chlorides accelerate the breaking of the protective layer of rebars favoring pitting corrosion; furthermore, corrosion products generate cracks in concrete, which further accelerate chloride ingress, increase porosity and reduce the strength. From a chemical perspective, the presence of chlorides and its diffusion into the reinforced concrete matrix is highly influenced by the content and distribution of aluminates (C_3A), in the same way, in concretes where ultra-rapid strength development and controlled expansion are required the presence of CA determine the chloride diffusion. This can be explained because chlorides react with aluminates to form Friedel's salts and other compounds. Although these reactions have been widely studied, their electrical changes still require further evaluation and analysis.

These experimental works use dielectric spectroscopy (DS), a technique that applying an alternating voltage and measuring phase and magnitude of current can determine the dielectric behavior variation. Also, this technique has shown good potential for measuring chlorides in other materials. Within this context, the main objective of this paper is to present the results of a study of the dielectrical behavior of calcium aluminate (in presence of mayenite and other ferrite compounds) when it interacts with solutions of chloride ions (Cl⁻) at different concentrations (0-1M) using DS. In addition, the paper includes a structural characterization, by SEM, which provides information about changes in the microstructure and the spatial distribution of chemical elements. The results show that changes in dielectric parameters of CA are proportional to chloride content; in addition, chlorides preferentially interact in those zones where Al, Ca, and O are.

Originality

The Chlorides react with some of the cement's compounds, and its interaction with aluminates (C_3A and CA) reduces the diffusion rate of chloride ions in cements. Although these reactions have been widely studied, their electrical changes still require further consideration. From this perspective, the main contribution of this study is the evaluation and analysis of electrical changes of calcium aluminates in presence of different chloride solutions. These electrical properties can be used with advantage as an alternative to measure chloride content in reinforced concrete.

Keywords: Calcium aluminate, dielectric spectroscopy, chlorides, microstructural characterization

* Corresponding author: mm.torres118@uniandes.edu.co, Tel +57-310-7659440

1. Introduction

Chloride ingress is one of the major causes of reinforcement corrosion in concrete structures. Chlorides accelerate the breaking of the protective layer of rebar allowing pitting corrosion. These failures weaken the strength of the material, and corrosion products generate cracks into the structure (Glasser et al. 2008; Andrade et al. 2011).

On the other hand, calcium aluminates (CA, C₃A, C₄AF, C₁₂A₇, cement chemistry notation) are usually used in the steel industry as refractory mixed oxides and in the cement community as hydraulic materials. Nowadays, other applications are developing such as optical devices, oxygen ionic conductors, and catalysts (Chang et al. 2014). Aluminates such as CaO•Al₂O₃ (CA) and 3CaO•Al₂O₃ (C₃A) are essential in cementitious materials, because they are refractory binders (Scian et al. 1987). Thermodynamic studies about calcium aluminates report their formation at temperatures near 1100°C, when Ca ions diffuse into the Al₂O₃ (Scian et al. 1987; Mohamed and Sharp 2002).

According to (Yildirim et al. 2011) aluminate content in cements is decisive in the chloride presence and diffusion. This can be explained because chlorides react with calcium aluminates in presence of water to form Friedel's salts. In general, chloride salts (i.e. CaCl₂, NaCl or KCl) dissociate in water, and then react with aluminates. Chloride ions go inside hydrated aluminate structure (Ca₂Al(OH)₆)⁺ replacing OH⁻ ions, and forming a distorted "Brucite-like" main layers separated by interlayers of Cl⁻ and H₂O molecules. (Balonis et al. 2010; Lannegrand et al. 2001; Abate and Scheetz 1995; Chang et al. 2014). Although these reactions have been widely studied, their electrical changes still require further evaluation and analysis.

One of these electrical changes is the electric polarization that affects dielectric constant and conductivity (resistivity). Polarization is the alignment of the dipoles in presence of an electric field, and causes stored charge increasing in the material. Four principle types of polarization exist: molecular, electronic, interfacial, and ionic. Molecular polarization is due to the alignment of permanent dipole (e.g. water molecule) with the external electric field, this kind of polarization remains after electric field is removed. When in presence of an external electric field, electrons in the atom of a material shift away from the positively charged nucleus, it is called electronic polarization, and like molecular polarization this one is temporary. Interfacial polarization occurs when charge mobility is accelerated by an electric field, and is stopped by a physical barrier making charge accumulation at that place. This phenomenon is predominant in the low frequency range of 10⁻³ to 10³ Hz. Finally, ionic polarization happens when anions and cations in crystals are relatively displaced from their normal positions (Pokkuluri 1998; Callister 2008; Ma and Boggs 2014).

Until now, the study of electrical parameters changes on concrete through radio frequencies (3Hz – 300GHz) have been used for detecting chloride (Al-Qadi et al. 1997), and dielectric parameters' variation have been studied for determining changes on the microstructure of cements due to hardening and admixtures presence (Tsonos et al. 2009; Wen and Chung 2001). These experimental works use dielectric spectroscopy (DS), a technique that applying an alternating voltage and measuring phase and magnitude of current can determine the dielectric behavior variation (Tsonos et al. 2009). Also, this technique has shown good potential for measuring chlorides in other materials, such as food (Castro-Giráldez et al. 2010).

For these reasons, the main objective of this research is to study the dielectrical behavior of CA (in presence of other aluminate phases and ferrite compounds in less proportion) when it interacts with chloride ions (Cl⁻) using dielectric spectroscopy (DS). In addition, structural characterization, by SEM, complements this study, giving information about microstructural changes and spatial distribution of chemical elements.

2. Experimental details

Commercial monocalcium aluminate was given by Parexlanko, its commercial name is Ternal® RG. To control and to understand the material's properties and behavior, it has been characterized structurally and electrically. Following subsections explain the procedures for both characterizations.

2.1. Electrical characterization

An impedance analyzer Agilent 4294A Dielectric text fixture 16451B was used to characterize the aluminates before, during, and after they react with chlorides. The frequency range was between 100 Hz and 5 MHz and the area (A) of the plates is $1.13 \times 10^{-3} \text{ m}^2$. This device works between 0°C and 55°C, for these experiments the temperature is $19^\circ\text{C} \pm 1^\circ\text{C}$, and it was necessary to do open/short compensation. Calcium aluminate powder (6,6g) is laid and tamped with a rammer during 120sec until it reaches a thickness between $1.84 \times 10^{-3} \text{ m}$ and $2.27 \times 10^{-3} \text{ m}$. Figure 1 shows CA sample before and after tamping.

Water deionized (0M) and three NaCl solutions were used to test the dielectrical behavior of CA: 0,5M, 0,7M and 1,0M. Table 1 lists the name and characteristics of each test. In addition, measurements were performed 1 minute after 1mL of NaCl solution is added to CA and every 10 minutes for 1 hour to determine time dependency. Each experiment was performed by triplicate.

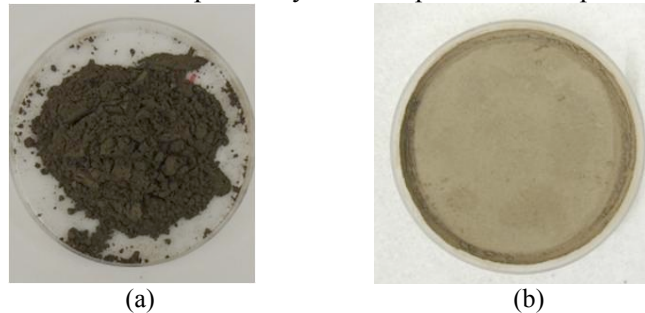


Figure 1 CA samples (a) before and (b) after preparation

Tab. 1 Tests conditions

| Sample name | NaCl Concentration (M - Molar) |
|-------------|--------------------------------|
| CA | 0 (Dried) |
| CAH | 0 (Hydrated) |
| CACI0,5 | 0,5 |
| CACI0,7 | 0,7 |
| CACI1 | 1,0 |

2.2. Structural characterization

Before making electrical characterization, calcium aluminate was characterized by X Ray Diffraction (XRD), using Bragg Brentano geometry by powder diffractometry in a Rigaku Ultima III equipment at a speed of $0.6^\circ 2\theta/\text{min}$ in the range $5-42^\circ 2\theta$, according to reported researches (Brown and Badger 2000; Sugiyama et al. 2008). Additionally, CA samples were studied by Scanning Electron Microscopy (SEM) and energy dispersive X-ray spectroscopy (EDX), using a microscope JEOL, model JSM 6490-LV at environmental pressure and 2000x, at Universidad de los Andes.

3. Results and Discussion

XRD characterization (Figure 2) demonstrated that the aluminate Ternal®RG given by Parexlanko presented small traces of iron oxide, mayenite (C_{12}A_7) and other ferrous components ($\text{Ca}_2\text{Fe}_2\text{O}_3$). Also, it showed the presence of monocalcium aluminate, $\text{CaO} \cdot \text{Al}_2\text{O}_3$ (CA) that was the principal compound of the sample.

In general, all of the tests presented the same tendency (Figure 3). It means, in the first 10 minutes of each experiment, they reached a steady value. Figure 3 suggests that relative permittivity does not depend on the time nor the frequency at this range. It is important to take into account that interaction depends on diffusion processes, and it is possible that outliers could be explained because of that. These results state that polarization mechanisms are constant, because of that, dielectric behavior is virtually independent of frequency (Callister 2008; Pokkuluri 1998).

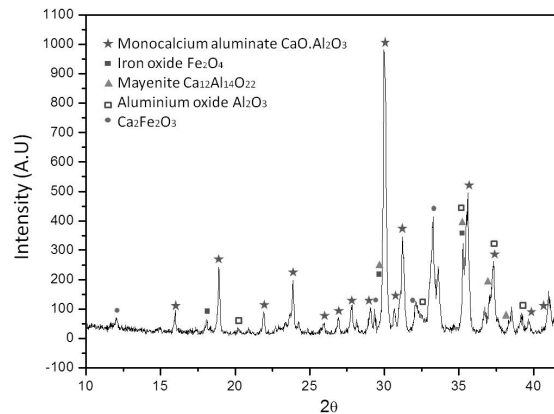


Figure 2 XRD Spectrum of Aluminate Ternal®RG

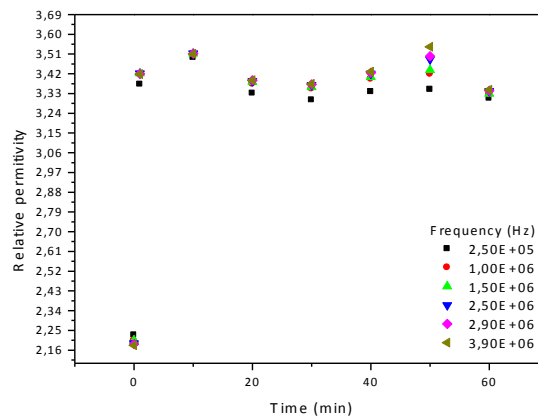


Figure 3 Effect of time on CA's behavior when 0.7 M NaCl solutions are added at specific frequencies. At min 0 the CA was dried.

In contrast, Figure 4 shows the change in relative permittivity as chloride solution concentration was increased. The effect of chloride solutions was to increase the measured relative permittivity. It means that parallel plates capacitance arises due to the ingress of Cl and Na ions that caused an ionic polarization inside the material.

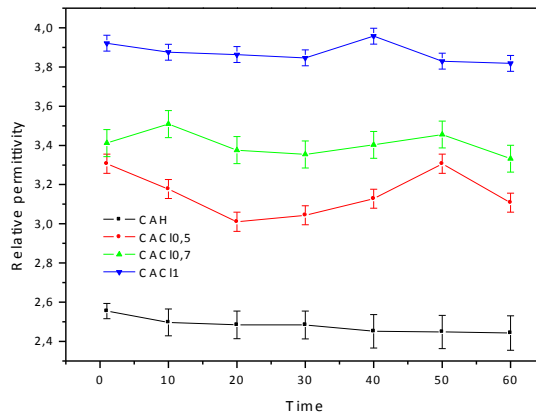


Figure 4 Time effect on CA's electrical behavior when 0M, 0.5M, 0.7M and 1M NaCl solutions are added. Each data set is the mean of three

Figure 5 demonstrates that relative permittivity is proportional to chloride concentration through:

$$\epsilon_r = 2.438 + 1.391X \quad (1)$$

Where: ϵ_r = relative permittivity, and X = chloride concentration [M].

It means that ionic polarization of NaCl and molecular polarization of H₂O lead to higher values of the dielectric constant allowing the increased of stored charge in the CA. Also, ionic penetration into the material causes that electric resistivity decrease, and of course, conductivity increases.

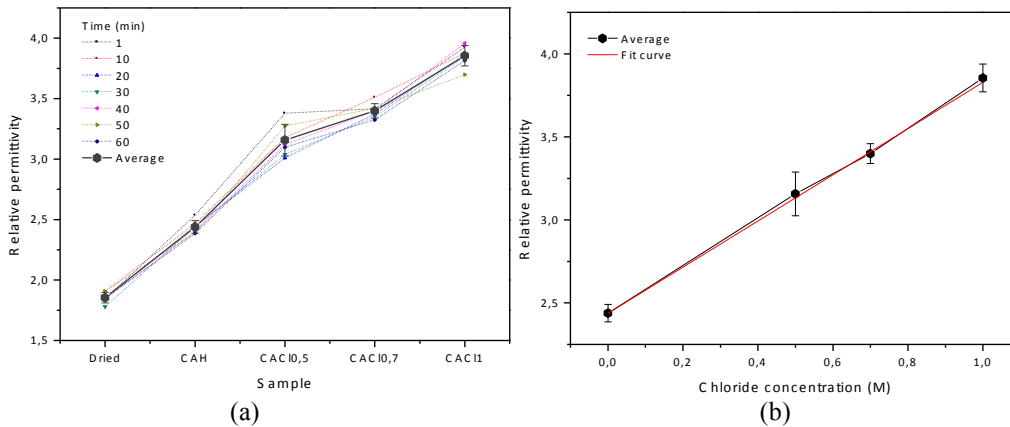


Figure 5 (a) Effect of chloride content on measured relative permittivity for CA dried and exposed to 0M, 0.5M, 0.7M and 1M NaCl solutions; (b) Correlation between chloride concentration and relative permittivity

Figure 6 shows the impact of NaCl solutions on the CA's microstructure. These images show acicular formation on the samples' surface. This behavior was presented for all interactions solutions-samples. Figure 6a displays the microstructure of the CA after deionized H₂O is added. The micrograph shows that the CA was homogeneously hydrated and also, that the structure was not closed by the process, it means that even when the CA was hydrated, it allowed water and ions penetration. Additionally, this image shows the formation of acicular structures. Likewise, Figure 6b also shows acicular structures on the surface. According with (Cornell et al. 1989) acicular growth can be explained by the formation of goethite (α -FeO(OH)) that, as it is shown by Figure 7 is one of the products of hydration of the iron presented in the CA used in this research.

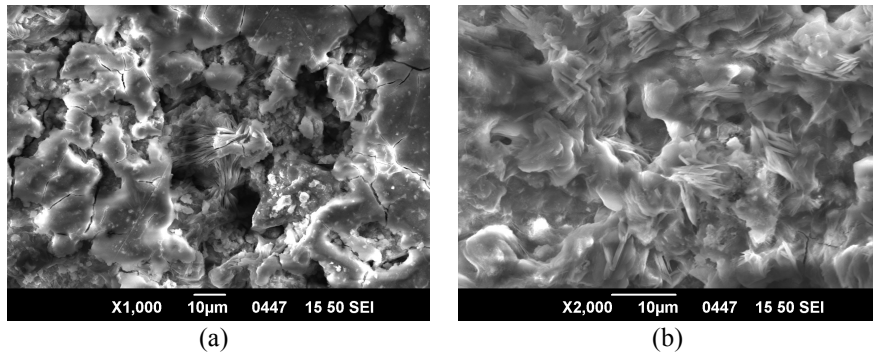


Figure 6 Micrography of CA when (a) 0M and (b) 0.7 M NaCl solutions are added

Figure 7 states that goethite (13° , 17° , 27°) is present on calcium aluminate surfaces as soon as it comes in contact with water. On the other hand, it is possible to identify the presence of hydrated aluminates (CAH_{10}), that is formed by the reaction of water and CA at low temperatures, $\sim 20^\circ\text{C}$ Taylor 1997). This compound is represented by the peaks in 6.8° and 11.8° (Chotard et al. 2011) of the XRD spectra.

Figure 8a displays an image on $\text{CACl}_{0,5}$ samples. And figures 8 b,c,d,e,f and g show the spatial distribution of Al, Ca, Fe, O, Na and Cl, respectively. As they illustrate, Na^+ and Cl^- were present on the presence of Al, Ca and O. This fact could be due to the reaction between Al, Ca, O and Cl ions. These maps also show that even when XRD spectrum (Figure 2) illustrated that there are little traces of Fe that, according to these images, was homogeneously distributed in the sample; Na^+ and Cl^- did not interact with it. Similarly, Figure 9 shows that CA exposed to 0,7M NaCl solution presented the same behavior as $\text{CACl}_{0,5}$ in other words, those places where Ca, Al and O were present were also the preferential places for Na^+ and Cl^- .

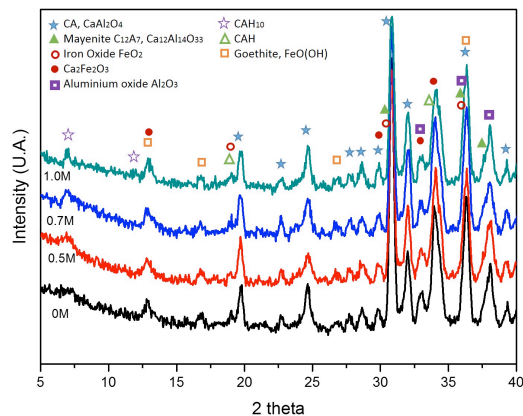


Figure 7 XRD spectrum of dried Aluminate after its interaction with aqueous chloride solutions (0M, 0.5M, 0.7M, 1.0M)

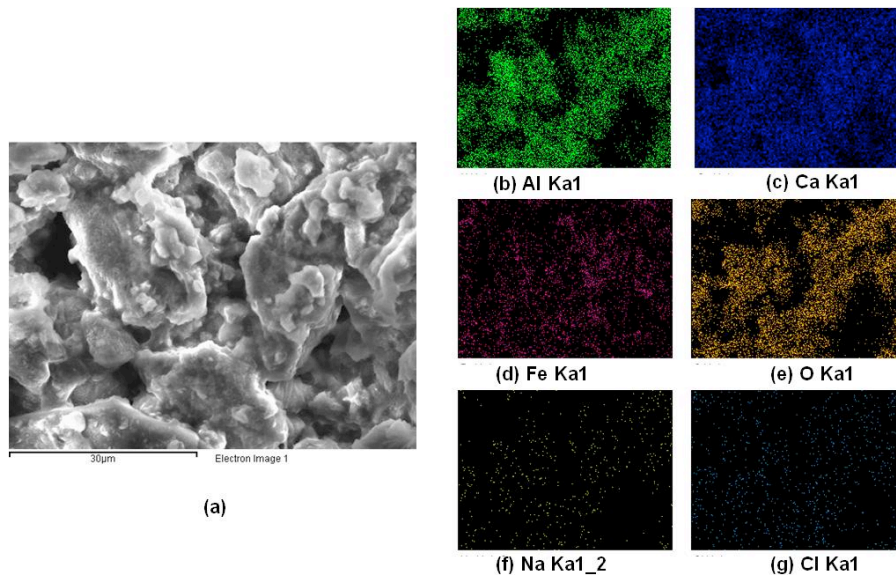


Figure 8 EDX map of CA when 0,5M NaCl solutions are added

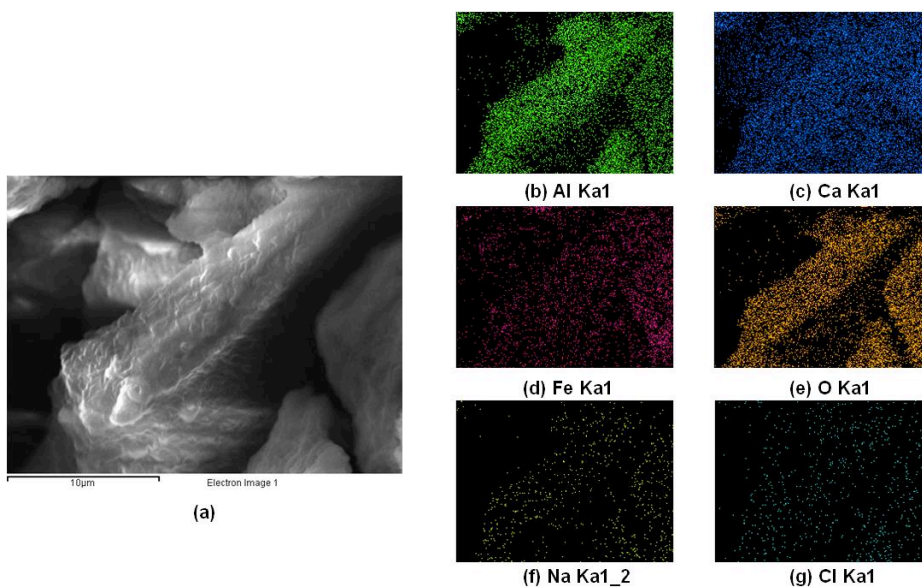


Figure 9 EDX map of CA when 0,7M NaCl solutions are added

4. Conclusions

The results of this study can be summarized as follows:

Electric permittivity changes of monocalcium aluminate caused by chloride ions presence and water were observed by DS. Through this technique it has been demonstrated that chloride and water presence have a measurable impact in the dielectric properties of the material

Experiments show that CA's dielectric behavior is independent of frequency and time. It means that i) polarization mechanisms constantly work during and after the contact with chloride solutions, and ii) interaction between CA and Cl^- is fast and reaches a steady state quickly; however, that interaction can be not homogeneous causing shifts in measuring.

SEM micrographies and XRD spectra illustrate that acicular structures are due to interaction between iron presented in CA and deionized water and not because of reactions between CA and Cl^- .

EDX maps state that Na and Cl ions have preferential places for interacting. In fact, these ions are fixed where Al, Ca and O exist.

These results suggest that monitoring CA's dielectric behavior can be used for measuring chloride concentration on RC since measurements are steady at the first hour of reaction.

5. Acknowledgements

The authors would like to thank the financial support of Departamento Administrativo de Ciencia, Tecnología e Innovación - Colciencias conv. 528 – 2011 and thank the staff of the Cleanroom laboratory - Department of Electrical and Electronics Engineering of Universidad de los Andes, for their help and support.

6. References

- Abate, C., and B. E. Scheetz. 1995. Aqueous Phase Equilibria in the System CaO-Al₂O₃-CaCl₂-H₂O: The Significance and Stability of Friedel's Salt. *Journal of the American Ceramic Society* 78 (4):939-944.
- Al-Qadi, I. L., R. Haddad, and S. M. Riad. 1997. Detection of Chlorides in Concrete Using Low Radio Frequencies. *Journal of Materials in Civil Engineering* 9 (1):29-34.
- Andrade, C., M. Castellote, and R. d'Andrea. 2011. Measurement of ageing effect on chloride diffusion coefficients in cementitious matrices. *Journal of Nuclear Materials* 412 (1):209 - 216.
- Balonis, M., B. Lothenbach, G. L. Saout, and F. P. Glasser. 2010. Impact of chloride on the mineralogy of hydrated Portland cement systems. *Cement and Concrete Research* 40 (7):1009 - 1022.
- Brown, P. W., and S. Badger. 2000. The distributions of bound sulfates and chlorides in concrete subjected to mixed NaCl, MgSO₄, Na₂SO₄ attack. *Cement and Concrete Research* 30 (10):1535 - 1542.
- Callister, J., W.D. 2008. Electrical properties. In *Fundamental of materials science and engineering, an integrated approach*: John Wiley & Sons, Ltd., 460-515.
- Castro-Giráldez, M., P. J. Fito, and P. Fito. 2010. Application of microwaves dielectric spectroscopy for controlling pork meat (*Longissimus dorsi*) salting process. *Journal of Food Engineering* 97 (4):484 - 490.
- Chang, Y.-P., P.-H. Chang, Y.-T. Lee, T.-J. Lee, Y.-H. Lai, and S.-Y. Chen. 2014. Morphological and structural evolution of mesoporous calcium aluminate nanocomposites by microwave-assisted synthesis. *Microporous and Mesoporous Materials* 183 (0):134 - 142.
- Chotard, T., Gimet-Breart, N., Smith, A., Fargeot, D., Bonnet, J. P. 2001. Application of ultrasonic testing to describe the hydration of calcium aluminate cement at the early age. *Cement and Concrete Research* 31 (3):405 - 412.
- Gault, C. Cornell, R. M., R. Giovanoli, and W. Schneider. 1989. Review of the hydrolysis of iron(III) and the crystallization of amorphous iron(III) hydroxide hydrate. *Journal of Chemical Technology & Biotechnology* 46 (2):115-134.
- Glasser, F. P., J. Marchand, and E. Samson. 2008. Durability of concrete - Degradation phenomena involving detrimental chemical reactions. *Cement and Concrete Research* 38 (2):226 - 246.
- Lannegrand, R., G. Ramos, and R. Talero. 2001. Estado del conocimiento sobre la sal de Friedel. *Materiales de Construcción* 51:63-71.
- Ma, S., and S. Boggs. 2014. 50+ Years of impedance measurement and spectroscopy, and implementation of virtual spectroscopy based on finite element analysis. *Electrical Insulation Magazine, IEEE* 30 (1):25-31.
- Mohamed, B. M., and J. H. Sharp. 2002. Kinetics and mechanism of formation of tricalcium aluminate, Ca₃Al₂O₆. *Thermochimica Acta* 388:105 - 114.
- Pokkuluri, K. 1998. Effect of admixtures, chlorides, and moisture on dielectric properties of portland cement concrete in the low microwave frequency range, Virginia Polytechnic Institute.
- Scian, A. N., J. M. P. López, and E. Pereira. 1987. High alumina cements. Study of CaO.Al₂O₃ formation. I. Stoichiometric mechanism. *Cement and Concrete Research* 17 (2):198 - 204.
- Sugiyama, T., W. Ritthichauy, and Y. Tsuji. 2008. Experimental investigation and numerical modeling of chloride penetration and calcium dissolution in saturated concrete. *Cement and Concrete Research* 38:49-67.
- Taylor, H. F. W. 1997. *Calcium aluminate, expansive and other cements* in Cement chemistry, Thomas Telford: 295 - 322.
- Tsonos, C., I. Stavrakas, C. Anastasiadis, A. Kyriazopoulos, A. Kanapitsas, and D. Triantis. 2009. Probing the microstructure of cement mortars through dielectric parameters' variation. *Journal of Physics and Chemistry of Solids* 70:576 - 583.
- Wen, S., and D. D. L. Chung. 2001. Effect of admixtures on the dielectric constant of cement paste. *Cement and Concrete Research* 31 (4):673 - 677.
- Yildirim, H., T. Ilica, and O. Sengul. 2011. Effect of cement type on the resistance of concrete against chloride penetration. *Construction and Building Materials* 25:1281-1288.