



HAL
open science

Lagrangian model of copepod dynamics: Clustering by escape jumps in turbulence

Hamidreza Ardeshiri, I. Benkaddad, François G Schmitt, Sami Souissi,
Federico Toschi, Enrico Calzavarini

► **To cite this version:**

Hamidreza Ardeshiri, I. Benkaddad, François G Schmitt, Sami Souissi, Federico Toschi, et al.. Lagrangian model of copepod dynamics: Clustering by escape jumps in turbulence. *Physical Review E: Statistical, Nonlinear, and Soft Matter Physics*, 2016, 93 (4), pp.043117. 10.1103/PhysRevE.93.043117 . hal-01315382

HAL Id: hal-01315382

<https://hal.science/hal-01315382>

Submitted on 4 May 2022

HAL is a multi-disciplinary open access archive for the deposit and dissemination of scientific research documents, whether they are published or not. The documents may come from teaching and research institutions in France or abroad, or from public or private research centers.

L'archive ouverte pluridisciplinaire **HAL**, est destinée au dépôt et à la diffusion de documents scientifiques de niveau recherche, publiés ou non, émanant des établissements d'enseignement et de recherche français ou étrangers, des laboratoires publics ou privés.

Lagrangian model of copepod dynamics: Clustering by escape jumps in turbulenceH. Ardeshiri,^{1,2,*} I. Benkaddad,² F. G. Schmitt,² S. Souissi,² F. Toschi,^{3,4} and E. Calzavarini¹¹*Université de Lille, CNRS, FRE 3723, LML, Laboratoire de Mécanique de Lille, F 59000 Lille, France*²*Université de Lille, CNRS, Université de Littoral Côte d'Opale, UMR 8187, LOG, Laboratoire d'Océanologie et de Géoscience, F 62930 Wimereux, France*³*Department of Applied Physics and Department of Mathematics and Computer Science, Eindhoven University of Technology, 5600 MB, Eindhoven, The Netherlands*⁴*Istituto per le Applicazioni del Calcolo CNR, Via dei Taurini 19, 00185 Rome, Italy*

(Received 8 January 2016; published 18 April 2016)

Planktonic copepods are small crustaceans that have the ability to swim by quick powerful jumps. Such an aptness is used to escape from high shear regions, which may be caused either by flow perturbations, produced by a large predator (i.e., fish larvae), or by the inherent highly turbulent dynamics of the ocean. Through a combined experimental and numerical study, we investigate the impact of jumping behavior on the small-scale patchiness of copepods in a turbulent environment. Recorded velocity tracks of copepods displaying escape response jumps in still water are here used to define and tune a Lagrangian copepod (LC) model. The model is further employed to simulate the behavior of thousands of copepods in a fully developed hydrodynamic turbulent flow obtained by direct numerical simulation of the Navier-Stokes equations. First, we show that the LC velocity statistics is in qualitative agreement with available experimental observations of copepods in turbulence. Second, we quantify the clustering of LC, via the fractal dimension D_2 . We show that D_2 can be as low as ~ 2.3 and that it critically depends on the shear-rate sensitivity of the proposed LC model, in particular it exhibits a minimum in a narrow range of shear-rate values. We further investigate the effect of jump intensity, jump orientation, and geometrical aspect ratio of the copepods on the small-scale spatial distribution. At last, possible ecological implications of the observed clustering on encounter rates and mating success are discussed.

DOI: [10.1103/PhysRevE.93.043117](https://doi.org/10.1103/PhysRevE.93.043117)**I. INTRODUCTION**

The study of swimming microorganisms and their interaction with fluid flows has attracted enormous attention in the past decade. A line of research has focused on characterizing individual swimming strategies by means of experiments [1–3] as well as by theoretical and numerical modeling [4,5]. A second direction of study devoted to the consequences of swimming on population dynamics, e.g., by focusing on encounter rates and other collective behaviors [6–10]. A third direction focused on the mutual interactions of microorganisms with the fluid-flow environment, in particular bioinduced flow fluctuations, sometimes dubbed as bacterial turbulence [11–13], or, vice-versa, on active matter clustering induced by nonhomogeneous flows or fluid turbulence [14–22]. The present study will focus on this latter aspect, in particular on copepod's dynamics in turbulent flow.

Copepods are the most diversified crustaceans in the aquatic environment whose length ranges from 0.1 mm to a few millimeters. They are important to global ecology and to the carbon cycle [23] (see also Refs. [24] and [25]). Although copepods are not at the top of the food web, they have a major role in the marine ecosystem because they are the secondary producers in the ecological food web linking phytoplankton cells (the primary producers) to fish larvae and even to large mammals such as whales. Copepods also consume the mosquito larvae, acting as control mechanism for malaria [26]. They are of great importance in fishery industry. A central issue in breeding fish species is the external food supply. Most fishes

prefer copepods to other zooplankton species (i.e., rotifers) and they grow bigger in shorter time when eating copepods [27,28].

Living in a fluid environment characterized by body-scale Reynolds number up to 1000, they are subjected to the physics of the flow field both in viscous and inertial regime [29]. Copepods typically have a short, cylindrical body with antennas, few pairs of swimming legs, and tails. Using their antennas, copepods can sense the disturbance, which is caused either by the presence of predators or by high turbulent regions in the flow. Kiørboe *et al.* [30,31] performed series of experiments, investigating the effect of nonuniform flow motion on copepods. In order to find the component of the flow that copepods react the most to, the copepods were put into a time-dependent siphon flow (which ideally generates a pure longitudinal deformation rate), in an oscillating chamber where copepods experience only acceleration, in a couette device producing shear deformation, and finally in a rotating cylinder where acceleration and vorticity are both present. The conclusion of this study was that these small crustaceans react to the flow deformation rate. Kiørboe also reported [32] that there are two threshold values of the deformation rate: the upper one, around 10 s^{-1} , which corresponds to either the presence of predators or to a region where turbulence intensity is high, and the lower one, 1 s^{-1} , which corresponds to regions in the flow where turbulence intensity is lower or food abundance is not enough for copepods. These tiny crustaceans find themselves at ease in regions in between these two thresholds. To avoid uncomfortable regions, copepods exhibit a rapid escape in the flow that is often dubbed a *jump*. Buskey *et al.* [33,34] showed that copepod's velocity can reach the rate of 500 body length per second (0.5 m/s) while jumping. The mechanical energy produced during their

*hamidreza.ardeshiri@polytech-lille.fr

escape is reported to be very high (8×10^{-5} J/s) [35], which makes copepods, relative to their size, among the fastest and the strongest animals in the world.

Buskey [33,34] also reported that males and females respond differently to hydrodynamic stimulus in terms of response latency, jump speed, number of thrusts, distance jumped, and many other parameters. According to their investigations, copepods jump in an unpredictable direction, but rarely in the backward direction of their motion. Other studies have considered the mating behavior of copepods [36] and the effect of salinity on copepod's dynamics and copepod's encounter rate [37,38]. Copepods are also sensitive to light stimuli, being attracted by natural light sources [39].

In the past two decades many studies have been conducted to quantify the dynamics of copepods. Most of them focused on their behavior in still water [36–38], while less studies have studied the dynamics in their natural living environment because of the difficulties of such experimental investigations. Few works have been devoted to the dynamics of copepods in turbulent flows [40–44]. However, the densities of copepods used in these studies are often lower than the maximum densities that can be encountered in the field.

The numerical simulation can provide a tool that integrates our current knowledge on copepod dynamics and uses a high number of individuals. The objective of the present study is to simulate copepods numerically in turbulence to characterize their dynamics induced by a behavior model. To achieve this goal, our strategy is twofold: on one hand, new experimental measurements and observations available in the literature [45–51], along with the aforementioned copepods properties, should be considered in detail in order to introduce a realistic and physical model. On the other hand, fundamental knowledge on simulation of particles in turbulent flows, available in numerical and experimental studies on particles in turbulence [52–56], is needed to couple the physics and biology in the numerical model.

The paper is organized as follows: Sec. II describes the experimental framework used to stimulate copepods. We then analyze copepods' trajectories to introduce a model equation describing copepods' behavior. Furthermore, similarity analysis is performed to tune the LC model and its numerical implementation is explained at the end of this section. Section III details the single-point statistics, fractal dimension, and orientation dynamics of copepods. The paper ends with conclusion and outlook on future works.

II. METHODS

A. Experimental jump data analysis

We begin by presenting an analysis of a new experimental trajectory data set of the estuarine copepod, *Eurytemora affinis*, recorded at LOG Laboratory between May and June 2015. Copepods that originated from the Seine river estuary (France) are maintained in the laboratory under optimal conditions for several generations. The experimental setup is a shallow-depth aquarium, $63 \times 53 \times 6$ mm³ in length, height, and depth, respectively, with two light sources on the lateral side (53×6 mm²). The water is kept still and at a temperature of $(18 \pm 1)^\circ\text{C}$ and salinity of 15 psu. Copepods

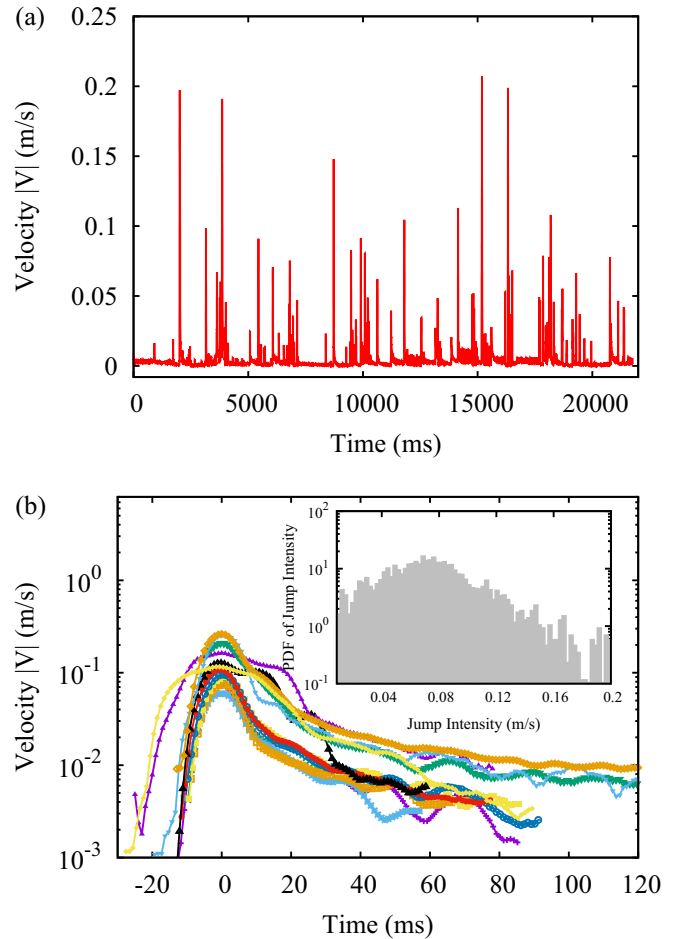


FIG. 1. (a) The copepod velocity relative to temporal sequence with multiple jumps occurring in response to stimulus. (b) Several jumps superposed by a shift, taking as reference time that are associated with their peak position. Almost all of the jumps decay exponentially. (Inset) The probability density function (PDF) of the jump intensity.

were introduced one at a time into the aquarium and their dynamics were filmed. A total of 14 individuals were analyzed (7 males and 7 females). A copepod in the aquarium is lead to jump preferentially along the horizontal direction by switching on just one of the light sources. The copepod dynamics in a vertical plane is recorded by a high-speed camera (1000 frames/s) and the single trajectory is extracted by means of particle-tracking velocimetry software (TEMA Motion by Image Systems). In such a way hundreds of trajectories are recorded, each with an average time length of 19 s. A typical copepod velocity signal as a function of time is shown in Fig. 1(a). We see extremely abrupt spikes (jumps) alternating to calm, nearly immobile, phases.

In order to see if the velocity signal of the jump events share some common features, we zoom in on the signal and superpose several jumps by a shift taking as reference their peak position. In Fig. 1(b) we can appreciate that almost all of the jumps, after a steep rise, display a similar decay. We associate such a decay to a purely hydrodynamical effect. It can be interpreted as a drag-induced decay of an instantaneous acceleration. The inset panel in Fig. 1 shows that

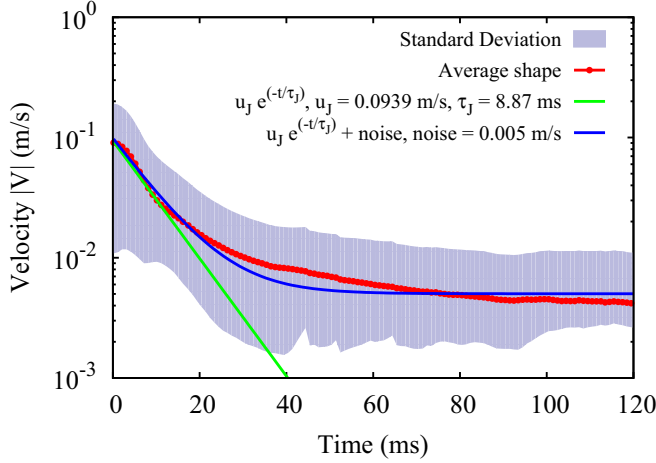


FIG. 2. Average shape of copepod velocity (over about 730 jumps): mean value (red line) and standard deviation (shaded area). Note that an error along the horizontal direction due to the uncertainty in the identification of jump peaks may be present but has been omitted here. Green line: Fitted exponential function $u_J e^{-t/\tau_J}$ where u_J is the jump intensity and τ_J is the decaying time of the jump. Blue line: Same fit with the addition of a noise velocity offset.

the probability density function (PDF) of the jump intensity has a maximum value around ~ 0.07 m/s. Note that spikes are identified based on a threshold on the time-averaged velocity of the copepods in each copepod's trajectory.

We then average the data set of jumps in order to obtain an averaged shape of jump. This is shown in Fig. 2, from which we can deduce the average jump velocity amplitude $u_J = 0.0939$ m/s and the mean decaying time $\tau_J = 8.87$ ms. We also see that for a long time the velocity reaches a very low plateau at 5×10^{-3} m/s $\sim 1/20 u_J$, which we are tempted to associate to a weak random wandering behavior of the copepod.

The distribution of jumps in time in the experimental data set seems to deviate from an exponential distribution, suggesting the existence of a memory effect. This may, however, be dependent on the type of stimulus (the light source), which is continuous in time, very different from the one due to the presence of a variable-flow shear rate. This aspect will, therefore, not be taken into account in the model presented in the next section. We plan to investigate interjump statistics more carefully in the future, when experiments with mechanically induced stimulus may be available.

B. Model equation for copepods dynamics

In this section we introduce a simple model system of copepods' dynamics. This representation is based on the idea that the copepods' trajectories in a fluid can be mimicked by properly defined active particles. Similar models have been successfully employed for the description of the behavior of phytoplankton, such as chlamydomonas [16,57,58], both in laminar and, more recently, in turbulent flows [14,15,22]. Copepods, and zooplankton in general, display higher complexity compared, e.g., to algae species because of their higher motility. The model relies both on biological and hydrodynamical assumptions. First, we assume that copepods respond always in the same way to external flow disturbances.

Their jump reaction is embedded in their neural system. Furthermore, the stimulus triggering the jump is highly stylized; we only take into account a mechanical signal with a single threshold, to be specified later on, and ignore any other activity induced by light, food, or chemistry (e.g., pheromones). On the mechanical side, we assume that copepods are small enough that their center of mass can be considered a perfect fluid tracer in a flow, except for the time when a jump event takes place. In hydrodynamic terms, this means that copepods are assumed to be rigid, homogeneous, neutrally buoyant particles with a size that is of the order of the dissipative scale of the flow. Gravity force has no role in producing acceleration or torque. Only the drag force effect is taken into account during the jumps. Finally, copepods are coupled to the fluid in a one-way fashion, they react and are carried by it, but they do not modify the surrounding flow; copepods-copepods interactions are also neglected. Adding all together the above hypothesis, the LC equation of motion is as follows:

$$\dot{\mathbf{x}}(t) = \mathbf{u}(\mathbf{x}(t), t) + \mathbf{J}(t, t_i, t_e, \dot{\gamma}, \mathbf{p}), \quad (1)$$

where $\mathbf{u}(\mathbf{x}(t), t)$ is the velocity of the carrying fluid at time t and position $\mathbf{x}(t)$ and where \mathbf{J} is an added velocity term that describes the active behavior (jump) of the copepod. $\mathbf{J}(t, t_i, t_e, \dot{\gamma}, \mathbf{p})$ is a function of time t ; it depends also on an initial and a final time t_i and t_e , on flow shear rate value $\dot{\gamma}$, and on orientation vector \mathbf{p} . If copepods are taken to be spherical in shape, their orientation dynamics is given by

$$\dot{\mathbf{p}}(t) = \boldsymbol{\Omega} \cdot \mathbf{p}(t), \quad (2)$$

where $\boldsymbol{\Omega}$ is the fluid rotation rate antisymmetric tensor, defined as $\Omega_{ij} = 1/2(\partial_i u_j - \partial_j u_i)$. A more general form of Eq. (2), valid for axisymmetric ellipsoidal particles, is as follows:

$$\dot{\mathbf{p}}(t) = \left\{ \boldsymbol{\Omega} + \frac{\alpha^2 - 1}{\alpha^2 + 1} [\mathcal{S} - \mathbf{p}^T(t) \cdot \mathcal{S} \cdot \mathbf{p}(t)] \right\} \cdot \mathbf{p}(t), \quad (3)$$

where $\alpha \equiv l/d$ is the aspect ratio of the ellipsoids given by the ratio of length (l) to diameter (d), which is typically around 3 for *E. affinis*. The above equation was first proposed by Jeffery, and its full derivation is detailed in Ref. [59]. Its phenomenology in turbulent flows has been investigated more recently in Ref. [54]. Notice that here we designate by \mathcal{S} the fluid deformation rate symmetric tensor as $S_{ij} = 1/2(\partial_i u_j + \partial_j u_i)$ and the shear rate is then defined as $\dot{\gamma} = \sqrt{2\mathcal{S} : \mathcal{S}}$. We note that the fact that the jump term is assumed to depend on $\dot{\gamma}$ represents a generalization to the 3D geometry of Kiørboe's empirical findings [32]. For the jump term we propose the following functional form:

$$\mathbf{J}(t, t_i, t_e, \dot{\gamma}, \mathbf{p}) = H[\dot{\gamma}(t_i) - \dot{\gamma}_T] H[t_e - t] u_J e^{\frac{t-t_i}{\tau_J}} \mathbf{p}(t_i), \quad (4)$$

where $H[x]$ denotes the Heaviside step function, $\dot{\gamma}_T$ is a threshold value of the shear rate, u_J and τ_J are two characteristic parameters characterizing the jump shape, its velocity amplitude (u_J), and duration τ_J , respectively. The first H step function models the fact that a jump can begin only when the shear rate is above the given threshold value, while the second step function accounts for the fact that the jump time span is finite. The initial and final time of a jump

are defined as:

$$t_i = t \quad \text{if} \quad (\dot{\gamma}(t) > \dot{\gamma}_T) \cap (t > t_e), \quad (5)$$

$$t_e = t_i + c \tau_J = t_i + \log(10^2) \tau_J. \quad (6)$$

In other words, we assume that a jump cannot begin if a previous jump has not finished ($t > t_e$) and that a jump terminates when its amplitude has decreased to a negligible level, here taken as one percent of the initial amplitude, i.e., $|J(t_e)| = 10^{-2}|J(t_i)|$.

C. Model tuning for turbulent flows

We now take into account the presence of the oceanic flow environment surrounding the copepods. The properties of oceanic turbulence relevant for our work have been studied by, among others, MacKenzie *et al.* [60] and Jimenez [61]. In these surveys it was observed that the mean value of the turbulent kinetic energy dissipation rate, $\epsilon = 2\nu\mathcal{S} : \mathcal{S}$, varies from about $10^{-8} \text{ m}^2\text{s}^{-3}$ in open ocean to $10^{-4} \text{ m}^2\text{s}^{-3}$ in coastal zones (although it is also sensitive to the wind speed conditions and on the depth). The value of ϵ along with the kinematic viscosity of sea water, ν , allows us to estimate the Kolmogorov scales of ocean turbulence: The dissipative length $\eta = (\nu^3/\epsilon)^{1/4}$, time $\tau_\eta = (\nu/\epsilon)^{1/2}$, and velocity $u_\eta = (\nu\epsilon)^{1/4}$. The order of magnitude estimate as from Ref. [61] for these quantities are reported in Table I. According to the same authors the typical Taylor-scale Reynolds number Re_λ in the ocean can reach values up to $O(10^2)$.

Given that the typical size of copepods is of the order of millimeters, it is clear that the relevant flow scales for their dynamics are close to the Kolmogorov scale or below in turbulence [29]. When the LC model is recast in a dimensionless form in terms of these scales, we get three dimensionless groups of parameters: τ_J/τ_η , u_J/u_η , and $\tau_\eta\dot{\gamma}_T$. These parameters, together with the flow Re_λ , fully specify the working conditions (or tuning) of the copepods-in-turbulence model.

In this study we take as reference for the energy dissipation rate the value $\epsilon = 10^{-6} \text{ m}^2\text{s}^{-3}$, and by taking into account the dimensional values estimated for the copepods jump intensity u_J and jump decaying time τ_J , the ratios $u_J/u_\eta = 93.9$ and $\tau_J/\tau_\eta = 0.00887$ can be deduced from the similarity analysis. This tells us that in ordinary turbulence conditions

TABLE I. Reference properties of the ocean turbulent flow as from Ref. [61]. ϵ is the mean turbulent energy dissipation rate, and η , τ_η , and u_η are the turbulence space, time, and velocity dissipative scales, respectively. Re_λ is the Taylor-scale-based Reynolds number. Their approximate range of variability is given together with the reference values chosen for the similarity analysis in the present study.

| Parameter | Unit | Range | | This study |
|---------------------|---------------------------|--------------------|--------------------|------------|
| ν | m^2s^{-1} | $\sim 10^{-6}$ | | 10^{-6} |
| ϵ | m^2s^{-3} | 10^{-8} | 10^{-4} | 10^{-6} |
| η | m | 3×10^{-3} | 3×10^{-4} | 10^{-3} |
| τ_η | s | 10 | 0.1 | 1 |
| u_η | m s^{-1} | 3×10^{-4} | 3×10^{-3} | 10^{-3} |
| Re_λ | — | $O(10^2)$ | | 80 |

the copepods possess an almost instantaneous reaction, since their response time is about one-hundredth of the smallest scale of turbulence. On the opposite the velocity reached during a jump is of a magnitude that is comparable if not higher to the one of turbulent velocity fluctuations. Finally, we note that we do not have any experimental guess for the magnitude of $\dot{\gamma}_T$, therefore the value $\tau_\eta\dot{\gamma}_T$ is a free parameter of our model.

D. Numerical implementation of the LC model and of the turbulent flow simulation

The copepods-in-turbulence model system is conveniently implemented via an Eulerian-Lagrangian approach, meaning that the trajectory $\mathbf{x}(t)$ of each individual copepod is computed by means of Lagrangian tracking method applied to Eq. (1) [62,63], while the fluid flow is obtained by solving the field equations of incompressible fluid-dynamics, i.e., Navier-Stokes equations, in turbulent conditions. All the particles are advanced in time using Adams-Bashforth method with a time step equal to $\delta t = 1.4 \times 10^{-3}\tau_\eta$, the same time step as for the integration of the Navier-Stokes equations. Such a choice of time step shall also satisfy the constraint $\delta t \ll \tau_J$.

A direct numerical simulation (DNS) approach was used to solve the Navier-Stokes equations for homogeneous isotropic turbulence by means of a pseudospectral method:

$$\partial_t \mathbf{u} + \mathbf{u} \cdot \nabla \mathbf{u} = -\nabla p / \rho + \nu \Delta \mathbf{u} + \mathbf{f}, \quad (7)$$

where $\mathbf{u}(\mathbf{x}(t), t)$ is the incompressible ($\nabla \cdot \mathbf{u} = 0$) fluid velocity field, p is the pressure, ν is the kinematic viscosity, and ρ is the fluid density. The \mathbf{f} is the forcing that is applied on large scales to sustain the statistically stationary turbulence. The solution domain is a cube of length $L = 2\pi$ with $N^3 = 128^3$ grid points, subject to periodic boundary condition. Aliasing error is controlled by omitting the wave number larger than $k = 2/3 \times (2\pi N/L)$, to reach the Taylor-Reynolds number of the flow $\text{Re}_\lambda = \sqrt{15}u_{\text{rms}}^2/(\nu\epsilon)^{1/2} \approx 80$, where u_{rms} is the single component root mean square velocity fluctuation. $k_{\text{max}}\eta > 1.4$, in which $k_{\text{max}} = N/3$ and η is the Kolmogorov length scale, assures that small scales structures are well resolved.

III. RESULTS AND DISCUSSION

As mentioned above, the LC model is characterized by three control parameters: the jump intensity u_J , the decaying time of the jump τ_J , and the shear rate threshold value $\dot{\gamma}_T$, which are conveniently presented in dimensionless form in terms of turbulence dissipative scale units. Since the LC model is just one-way coupled to the fluid, in the numerics we can perform simultaneous simulations of several families of copepods in the same turbulent flow, where each family is characterized by the triplet $[u_J/u_\eta, \tau_J/\tau_\eta, \dot{\gamma}_T\tau_\eta]$.

In agreement with the experimental observation we always keep fixed the decaying time of the jump to the value $\tau_J/\tau_\eta = 10^{-2}$, while the other parameters are varied independently in the ranges $u_J/u_\eta \in [1, 400]$ and $\tau_\eta\dot{\gamma}_T \in [0, 4]$. Note that if $\dot{\gamma}_T = 0$, according to the model, all the particles will jump in a synchronous way. In order to avoid such an unphysical feature, the time t_e for each particle is initialized by a random variable with homogeneous distribution in the interval $[0, \log(10^2)\tau_J]$.

We perform a series of simulations with multiple families, with about 2.56×10^5 particles per family.¹ The simulation was started and particles were let displace for about 2 eddy turnover times, after that during the following ~ 2 eddy turnover times about 10 instantaneous distributions of LC particles were saved for analysis. Copepods are modeled as solid sphere particles, and orientation vector affected by fluid rotation rate [Eq. (2)], unless otherwise noted. For comparison a set of passive fluid tracers are also included in all our simulations.

A. Single-point statistics

In order to see how the LC dynamics in turbulence differ from that of a fluid tracer, we first address the velocity single-point statistics. The PDF of the absolute value of single-component velocity for the copepods, i.e., $|\dot{x}_i|$, is shown in Fig. 3. Tracers, the particles that move along the streamlines, agree with a Gaussian distribution, while for copepods a slower decaying tail is found. This deviation becomes more pronounced at increasing the jump intensity for a given threshold value of the shear rate, as shown in Fig. 3(a). It also appears that low jump intensities $u_J < 10u_\eta$ are not strong enough to make effective changes on the copepods PDF. On the other hand, increasing the threshold value of the shear rate leads to fewer jumps; therefore, in this case copepods behave almost like tracers. Their deviation in velocity distribution from the Gaussian indeed increases by decreasing the shear rate threshold value as can be seen in Fig. 3(b).

The general trend of the observed deviation from Gaussianity can be predicted by means of the following probabilistic model. We suppose that the instantaneous single cartesian component velocity of LC particles can be approximated by the sum of three statistical independent random variables. The first variable accounts for the turbulent velocity field contribution; therefore, it is a Gaussian with zero mean and the same standard deviation as the one measured in the DNS. The second and third variable mimic, respectively, the jump direction and its intensity: we assume that the orientation is random uniform in the solid angle and that the jumps happen uniformly in time. One can obtain the resulting PDF for the LC particle velocity from the convolution of the three elementary PDFs associated to the three described random variables. The resulting density distribution function when compared to the LC measurements at low threshold value $\tau_\eta \dot{\gamma}_T = 0.21$ (i.e., when copepods jump very frequently), shows an overall qualitative agreement with a slight deviation in the tails [see Fig. 3(b)].

Such a discrepancy comes from the fact that in reality the jump directions develop some correlations with the underlying flow, via Eq. (2), while the probabilistic model neglects it. One can make use of the approximate probabilistic model to estimate the average fraction of particle performing jumps as a function of the shear-rate threshold value. This is done by introducing an adjustable parameter accounting for the probability that a given particle is actually jumping and by fitting the model to the PDF curves. Figure 4 shows the fitted

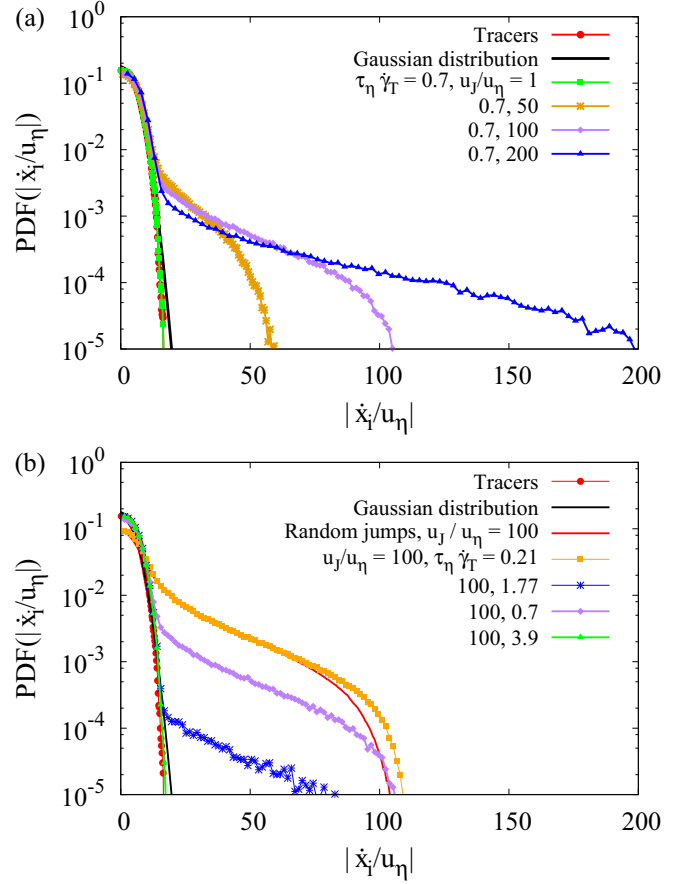


FIG. 3. Probability density function of absolute value of single component velocity $|\dot{x}_i/u_\eta|$ for the copepods (a) at constant threshold value $\tau_\eta \dot{\gamma}_T = 0.7$ and different jump intensities. Gaussian distribution is a statistic distribution here with the measured root mean square velocity of the Eulerian field as the standard deviation (b) at constant jump intensity $u_J/u_\eta = 100$ for different shear rate threshold values. Random jumps correspond to the expected velocity distribution when randomly oriented jumps occur uniformly in time on top of the turbulent velocity field.

predictions obtained with such a procedure (which confirm the validity of the probabilistic model), while the inset of the same figure displays the inferred jump percentage as a function of the shear rate threshold value. We observe an exponential decrease as $\dot{\gamma}_T$ is raised. For the value $\tau_\eta \dot{\gamma}_T = 0.5$, the jumping particle fraction is around 50%.

We finally observe that the shape of the PDF displayed by the LC model is also in qualitative agreement with a recently published experimental study [43], despite the fact that the experiment has been performed in low Reynolds number conditions (up to $Re_\lambda \simeq 30$). What has not been reported yet in experimental studies is a quantification of the three-dimensional spatial distribution of copepods in turbulence. We do this in the next section by means of a fractal dimension characterization.

B. Correlation dimension analysis

The distribution of the LC particles is illustrated by Fig. 5, where we show the instantaneous particle positions in two-dimensional slices of thickness $\sim \eta$, visualizing at the same

¹In physical dimension this corresponds to a number density of $O(1)$ LC particles per cm^3 , a density comparable to the one found for real copepods estuarine water.

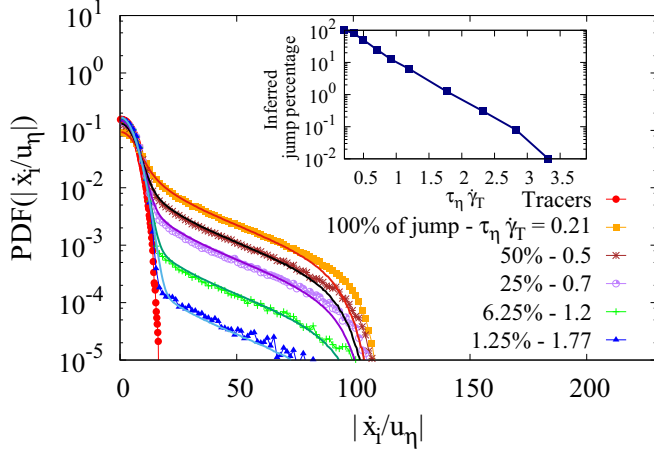


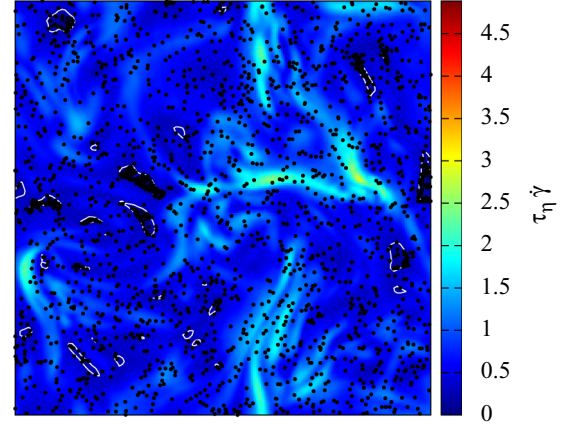
FIG. 4. Probability density function of absolute value of single-component velocity $|\dot{x}_i/u_\eta|$ for the copepods at constant jump intensity $u_j/u_\eta = 100$ for different shear rate threshold values. Fitted PDF curves correspond to the percentage of jump of copepods. (Inset) Deduced percentage of jump as a function of the shear rate threshold value $\tau_\eta \dot{\gamma}_T$.

time the values of shear-rate of the carrying flow. Contrary to fluid tracers, LC particles are nonhomogeneously dispersed in regions where turbulence intensity is below the given shear-rate threshold, according to the model. In the panels of Fig. 5, we also highlight the $\dot{\gamma}_T$ values by contour lines, we name, respectively, *comfort* and *alert* regions the locations which are below or above these fixed $\dot{\gamma}_T$ values. In Fig. 5(a), which corresponds to $\dot{\gamma}_T = 0.35 \tau_\eta^{-1}$, the alert region is the dominant one. In this situation the great majority of LC particles are jumping but they manifestly fail to reach the few available comfort islands. This may be due both to the fact that islands are small and that they are short lived: one shall bear in mind the interplay between space and time in this problem. Figure 5(b) shows a condition where comfort and alert regions are equally probable. We notice a pronounced aggregation of particles in the alert areas surrounding the comfort regions, while the latter are efficiently evacuated. Finally, Fig. 5(c) illustrates what happens when the alert behavior is triggered only by a few extreme shear-rate filamentary regions. The LC particles manage to avoid them quite efficiently but in the overall picture they seem to be mostly homogeneously distributed. (See Supplemental Material [64] for the 2D visualization of copepods' motion in turbulent flow at $\tau_\eta \dot{\gamma}_T = 0.92$.)

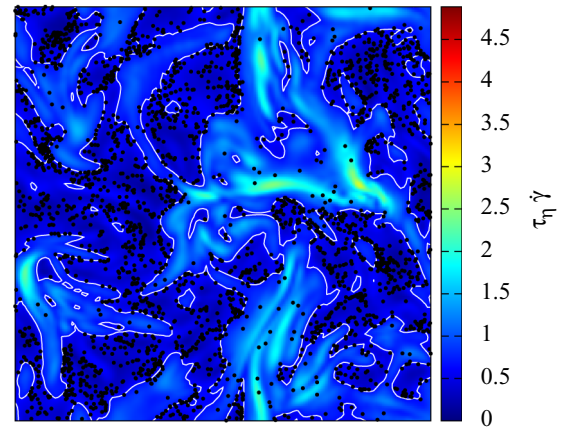
In order to better quantify the patchiness of the LC particles we compute their correlation dimension (D_2), which is a measure of the dimensionality of a set of points. According to the Grassberger and Procaccia algorithm [65], the D_2 is defined as the scaling exponent of the probability of finding a pair of particles with a separation distance less than r : $P_2(|X_2 - X_1| < r) \propto r^{D_2}$ as $r \rightarrow 0$. In other words, if

$$C(r) = \frac{2}{N(N-1)} \sum_{i < j} H(r - |X_i - X_j|) \quad (8)$$

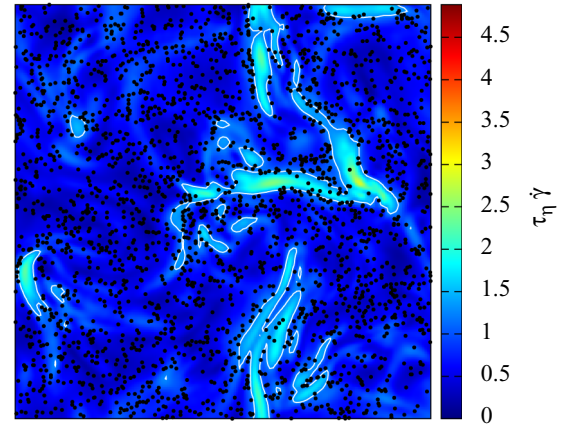
decreases like a power law, then $D_2 = \lim_{r \rightarrow 0} \frac{\log C(r)}{\log r}$. Figure 6 shows the D_2 value in the two-dimensional parameter space



(a) $\tau_\eta \dot{\gamma}_T = 0.35$



(b) $\tau_\eta \dot{\gamma}_T = 0.92$



(c) $\tau_\eta \dot{\gamma}_T = 1.77$

FIG. 5. Patchiness of the copepods from the simulations. Shading shows the instantaneous field of the absolute value of the shear rate of the Eulerian field (a) distribution of the copepods with $u_j/u_\eta = 250$ and $\tau_\eta \dot{\gamma}_T = 0.35$, (b) distribution of the copepods with $u_j/u_\eta = 250$ and $\tau_\eta \dot{\gamma}_T = 0.92$, and (c) distribution of the copepods with $u_j/u_\eta = 250$ and $\tau_\eta \dot{\gamma}_T = 1.77$. Contour lines are traced at the corresponding value of $\dot{\gamma}_T$ on each panel.

composed by the intensity of the jump and the shear rate threshold value. The clustering ($D_2 < 3$) is discernible when the prescribed shear rate threshold value is less than $2.8 \tau_\eta^{-1}$,

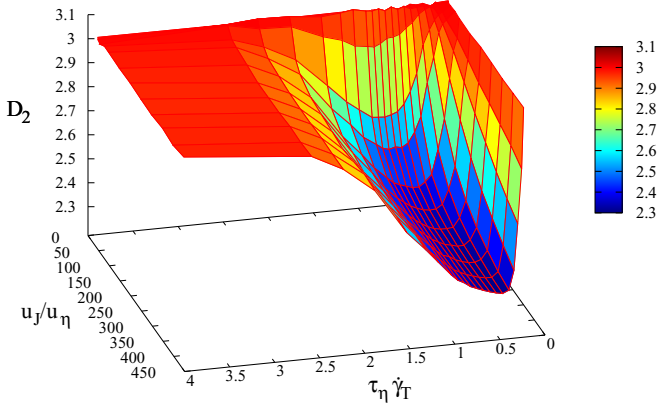


FIG. 6. Correlation dimension D_2 of copepods as a function of jump intensity u_J/u_η and threshold value $\tau_\eta \dot{\gamma}_T$.

and it is maximal, $D_2 \simeq 2.3$, at around $0.5 \tau_\eta^{-1}$. On the other hand, we observe a saturation of clustering as u_J is increased. In order to better appreciate these two features, i.e., the minimum with respect to $\tau_\eta \dot{\gamma}_T$ and a saturation as a function of u_J/u_η , two two-dimensional cuts of the $D_2(\dot{\gamma}_T, u_J)$ surface are shown in Fig. 7.

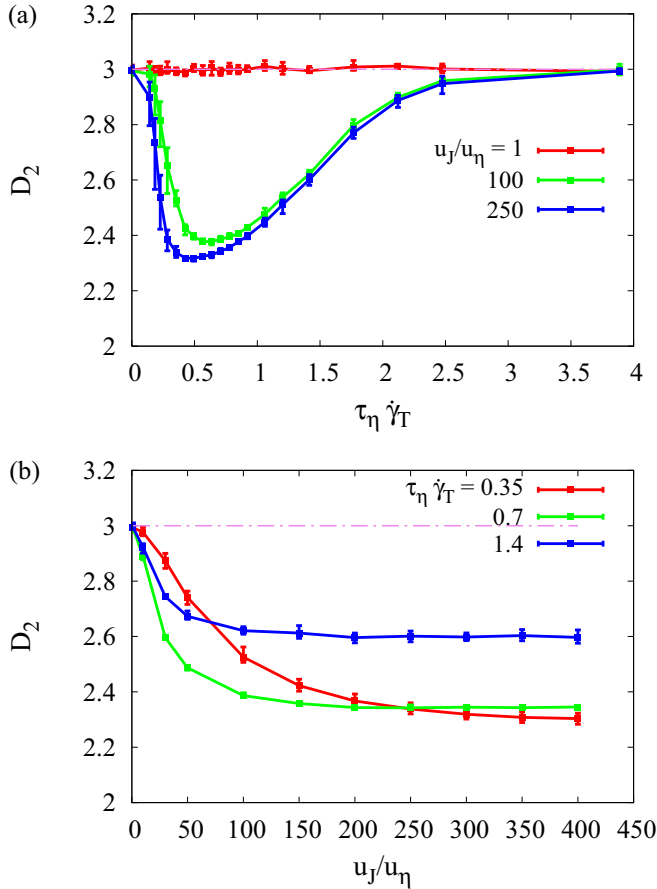


FIG. 7. Lateral view of correlation dimension of the copepods as a function of the jump intensity u_J/u_η and threshold value $\tau_\eta \dot{\gamma}_T$. Error bars indicate the range of variability of the measurements from 10 independent particle snapshots.

One may wonder why there is an optimum and what is its physical meaning. Copepods are prone to jump in order to escape from regions of alert ($\dot{\gamma} > \dot{\gamma}_T$), to reach regions where $\dot{\gamma} < \dot{\gamma}_T$; therefore, the chance for a jump to be successful (assuming it to be randomly oriented) depends on the size of the comfort region, in other words to the volume, $\mathcal{V}_{\dot{\gamma} < \dot{\gamma}_T}$. On the other hand, clustering would be maximum if we have numerous successful jumps, and obviously the number of jumps depends on $\mathcal{V}_{\dot{\gamma} > \dot{\gamma}_T}$. This implies that copepods clustering is expected to be proportional to $\mathcal{V}_{\dot{\gamma} < \dot{\gamma}_T} \cdot \mathcal{V}_{\dot{\gamma} > \dot{\gamma}_T}$. Now, substituting the volume of comfortable regions with $\mathcal{V}_{\text{tot}} - \mathcal{V}_{\dot{\gamma} > \dot{\gamma}_T}$ leads to $\mathcal{V}_{\dot{\gamma} > \dot{\gamma}_T} \cdot (\mathcal{V}_{\text{tot}} - \mathcal{V}_{\dot{\gamma} > \dot{\gamma}_T})$. One direct consequence is that the clustering would be maximum when $\mathcal{V}_{\dot{\gamma} > \dot{\gamma}_T} = \mathcal{V}_{\text{tot}}/2$. This can explain the existence of the optimum of D_2 as a function of $\tau_\eta \dot{\gamma}_T$ as shown in Fig. 7(a) as well as its trend as a function of $\dot{\gamma}_T$. Note, however, that this argument is based on the simplifying assumption that there is no correlation between the orientation of a LC particle at jump and its position respect to the comfort area, and also it neglects the spatial structure of the shear rate field.

How can we determine the value of $\dot{\gamma}$ for which the condition of $\mathcal{V}_{\dot{\gamma} > \dot{\gamma}_T} = \mathcal{V}_{\text{tot}}/2$ occurs? One possibility is to perform an Eulerian measurement of the $\dot{\gamma}(x, t)$ field over space and time. Another option is to look at the fraction of time spent by tracers in alert regions, $T_{\dot{\gamma} > \dot{\gamma}_T}/T_{\text{tot}}$ (with T_{tot} the total time of the measurement). Since tracers explore evenly all the region of the flow this is equivalent to measure the volume ratio $\mathcal{V}_{\dot{\gamma} > \dot{\gamma}_T}/\mathcal{V}_{\text{tot}}$. In particular, in order to increase the statistical sampling we look at the global mean value $\langle T_{\dot{\gamma} > \dot{\gamma}_T} \rangle / T_{\text{tot}}$ where the average is over the total number of particles (N_{tot}):

$$\langle T_{\dot{\gamma} > \dot{\gamma}_T} \rangle = \frac{1}{N_{\text{tot}}} \sum_{i=1}^{N_{\text{tot}}} \int_0^{T_{\text{tot}}} H(\dot{\gamma}_i(t) - \dot{\gamma}_T) dt. \quad (9)$$

The plot in Fig. 8 shows the trend of $\langle T_{\dot{\gamma} > \dot{\gamma}_T} \rangle / T_{\text{tot}}$ as function of $\dot{\gamma}_T$ both for tracers and LC particles. It confirms that copepods reside less in alert regions compared to tracers. Moreover, the difference among the two time fractions can be used as an alternative clustering indicator. It has, in fact, a similar trend

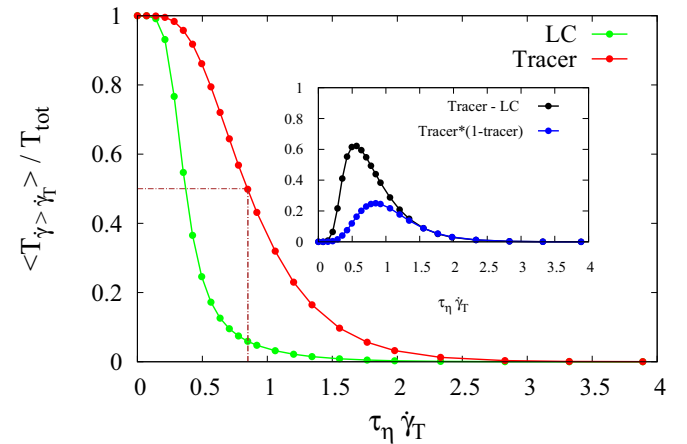


FIG. 8. Time fraction spent in alert regions by tracer and copepods as a function of the threshold value. Inset: difference of time fraction between tracers and LC particles and prediction based on $\mathcal{V}_{\dot{\gamma} > \dot{\gamma}_T}/\mathcal{V}_{\text{tot}}$ measurement.

as the $D_2(\dot{\gamma}_T)$ function and shows a peak for the same value of $\dot{\gamma}_T$ (inset of Fig. 8). The prediction that clustering varies as $\mathcal{V}_{\dot{\gamma} > \dot{\gamma}_T} \cdot (\mathcal{V}_{\text{tot}} - \mathcal{V}_{\dot{\gamma} > \dot{\gamma}_T})$ is in qualitative agreement with the observed trend, it is in quite good agreement in the large $\dot{\gamma}_T$ regime; however, it fails to capture the correct value at which the maximum appears, giving $\tau_\eta \dot{\gamma}_T = 0.85$ instead of 0.5. Finally, we note that the case of maximal clustering at $D_2 \simeq 2.3$ corresponds to a condition where the LC particles concentrate in nearly two-dimensional sheets, which envelop the *alert* regions [as can be also inferred from the visualisation in Fig. 5(b)].

We can offer a qualitative physical explanation for the observed D_2 saturation for high values of u_J at fixed $\dot{\gamma}_T$ [Fig. 7(b)]. The argument is as follow: one may expect that there is clustering if the time to escape from an alert region is less than the lifetime of such a region: $\tau_{\text{escape}} < \tau_{\dot{\gamma}_T}$. The former time can be estimated as $\tau_{\text{escape}} = l_{\dot{\gamma}_T}/u_J$, where $l_{\dot{\gamma}_T}$ is the typical size of the alert region characterized by a shear-rate $\dot{\gamma} > \dot{\gamma}_T$. This implies that LC particles form clusters and the D_2 measure is lead to saturate to a constant value if $u_J > l_{\dot{\gamma}_T}/\tau_{\dot{\gamma}_T}$. This latter ratio can be thought as a threshold-dependent escape velocity $u_{\dot{\gamma}_T} = l_{\dot{\gamma}_T}/\tau_{\dot{\gamma}_T}$. From the correlation dimension measurement this escape velocity is estimated to be of the order of $100 u_\eta$, i.e., of the order of the large scale velocity, with a weak decreasing trend at increasing $\dot{\gamma}_T$.

We finally observe that when the flow field associated to the Lagrangian particles, $\mathbf{v} = \dot{\mathbf{x}}$, displays a weak compressibility, it can be shown [15,66] that D_2 depends on the flow divergence by the relation $D_2 = 3 - c(\nabla \cdot \mathbf{v})^2$ with c a proportionality constant and angular brackets denoting time and space average. If this argument is applied to the LC model we observe that the divergence can be different from zero only at the interface between comfort and alert regions. This is because in comfort regions ($\nabla \cdot \mathbf{v} = \nabla \cdot \mathbf{u} = 0$) and in alert regions ($\nabla \cdot \mathbf{v} = \nabla \cdot \mathbf{u} + \nabla \cdot \mathbf{J} = 0$, as we can safely assume the jump term to be spatially constant). At the interface, however, the change from the fluid velocity intensity u to $u + u_J$ has a spatial transition scale roughly proportional to $u_J \cdot \log(10^2)\tau_J$, which leads to a non-null divergence. This explains the LC accumulation that we observe in correspondence of the alert and comfort interfaces, which effectively acts as sink or source term of the LC velocity field (see in particular the central panel of Fig. 5). By following this line of reasoning, one can guess that the minimum value of D_2 will correspond to the case where the surface of alert and comfort interface is maximum (and not of volumes, as stated above). This has clearly a dependence on the threshold $\dot{\gamma}_T$ and much less, if any, on u_J . Despite the qualitative agreement of this observation with our numerical results, we have not been able yet to confirm it quantitatively in the weakly compressible limit of the LC model.

C. Particle orientational dynamics

What is the importance of particle orientation for the nonhomogenous distribution of particles? The effect of the geometrical aspect ratio of the particles, together with the direction of their jump on the fractal dimension are addressed here. The fluid deformation rate symmetric tensor S_{ij} comes into play by modeling copepods as elongated particles with aspect ratio equal to 3 (e.g., the relevant aspect

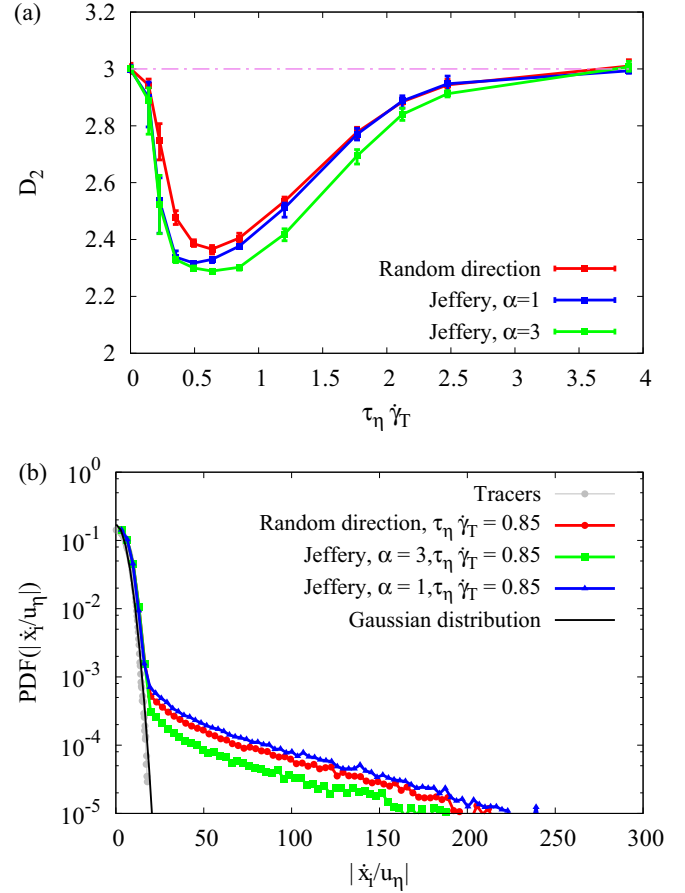


FIG. 9. (a) Effect of the aspect ratio and direction of the jump on the fractal dimension; (red) copepod as solid sphere particles, their direction of the jump is random in the solid angle; (blue) copepod as solid sphere particles with an orientation; and (green) as elongated particles. Both jump in a direction following the Jeffery's equation. (b) PDF of the absolute value of the single component velocity for (red) random direction case and (green) Jeffery's case with aspect ratio of 3. All cases are computed at $u_J/u_\eta = 250$.

ratio for *E. affinis* copepod). Its effect on the jump direction selection leads to enhanced clustering of the particles for jump intensity $u_J/u_\eta = 250$. Copepods can also jump in random direction in the solid angle independently from the rotation rate and deformation rate of the Eulerian field. Less clustering in this case is logical since the jumping direction has no relation with the fluid flow. These behaviors can be found in more details in Fig. 9, where we address the influence of jump direction on the PDF of the copepods velocity.

IV. CONCLUSIONS AND PERSPECTIVES

In this study we have considered a Lagrangian model for active particles. The model is trimmed in a way to reproduce some dynamical features experimentally observed in the motion of copepods in still water. Its main characteristics is the possibility to locally acquire an extra-velocity (jump) in response to a variation of the fluid-flow conditions surrounding the particle. The direction of the jump is ruled by the hydrodynamics of small neutrally buoyant particles. The

Lagrangian model has been coupled to a turbulent developed flow described by the incompressible Navier-Stokes equations.

We have shown that jump escape reaction from spatiotemporal events characterized by high shear-rate leads to nonhomogeneous spatial distributions of active particles. This clustering mechanism, however, is effective only when the reaction threshold is close to values of the order of τ_η^{-1} in a very narrow range. The fact that the range is narrow is ultimately linked to the intermittent distribution of the turbulence dissipation rate [67]. We have shown that clustering approaches its maximum when the threshold rate value $\dot{\gamma}_T$ roughly divide the shear-rate ($\dot{\gamma}$) spatial field in equal-volume regions. Since this mechanism mainly depends on the average value of small-turbulence scales rather than on their fluctuations, we expect it to have a weak dependence on the Reynolds number of the turbulent flow. A second implication of the model is that for any given shear-rate reaction value $\dot{\gamma}_T$ there is a maximal intensity jump velocity beyond which clustering cannot be further increased. Finally, the analysis of the correlation dimension suggests the formation of local quasibidimensional clusters enclosing the nonpermitted flow regions. From a physical point of view, we remark that the clustering mechanism at work in turbulence for the LC model is different from the one shown in other model systems of particulate active matter. For instance, the clustering observed for motile algal cells in turbulence is given by the gyrotactic effect, which is a nonisotropic effect induced by the presence of the external gravity field [22]. On the opposite, the LC model discussed here is isotropic but it is nonhomogeneous in space (it depends on the local value of the shear rate). We have tested the fact that clustering also appears when LC particles are made sensitive to other flow quantities such as enstrophy or fluid acceleration. The minimal fractal dimension we observed is always above the value of 2, confirming the fact that particles in this case aggregate in order to cover the surface of the forbidden regions. Based on these observations we do not expect that such clustering processes could lead to filamentary like clusters, $D_2 \simeq 1$, as the ones observed for microbubbles in turbulent flows. Another notable result is the negligible impact of the particle orientational dynamics on the clustering. This is likely to be linked to the limited duration of jumps (note that here $\tau_J \ll \tau_\eta$), but might become important for longer jumps, particularly in the modeling of larger motile plankton. The negligible impact of orientation for the case examined here suggests the possibility to formulate accurate eulerian mean-field particle models based on the introduction of a space-dependent effective diffusivity (κ) whose amplitude may be linked directly to jump shape parameters, via a dimensional relation of the type $\kappa \propto u^2 \tau_J$.

From a more biological perspective, although behavioral mechanisms leading to clustering had been already suggested in the past, such as the formation of patches through swimming

against the flow [68], the possibility of cluster formation by escape jumps in a no-mean flow situation was never reported before. As discussed in Ref. [38], clustering of copepods has an ecological importance: an effect may be to strongly increase the contact rate with mates, and hence improve the reproduction. Indeed, several models have been proposed to express copepod contact rates in turbulence [69–71], reviewed in Ref. [72]. In case of clustering, the contact rate is strongly increased [38,73–75]. The clustering that would result from a behavior of predator avoidance (a reaction to turbulent shears similar to predators’ signals) would have as side effect a positive consequence with a strong enhancement of the mating contact rate. Of course, such copepod concentration could also attract predators. Due to different tradeoffs, each copepod species may have an optimal jump behavior in response to turbulence. For example, the copepod *E. affinis* used in our experimental section is an estuarine species adapted to maintain the bulk of its population in a salinity gradient in highly turbulent conditions [76,77]. By using high-frequency sampling data of all life stages of *E. affinis*, Schmitt *et al.* [77] confirmed that the late developmental stages (mainly adults) exhibited active vertical migration during the flood. Consequently, the population was not homogeneously distributed in the water column, as dense patches are observed during short time window and near the bottom [76].

Our model can be improved in the future to test such situations with tidally induced turbulence in shallow estuaries where copepods can use their jump abilities to simply avoid to be flushed out of their optimal habitat. This could lead to the identification of some optimal clustering strategy that may be in relation with the dome-shapes proposed earlier, on purely speculative intuitions [78,79]. The presented LC model can also be improved by refining the jumping protocol in order to take into account the fact that the temporal sequence of jumps in copepods occurs in fast sequences (bursts) interposed to inactive moments. Another possible direction of research concerns the investigation of the impact of a spatial radius of perception for copepods to react to turbulent shear. This may produce a smoothing or a delay in the perceived turbulent signal.

ACKNOWLEDGMENTS

The authors acknowledge support from European COST Action MP1305 “Flowing Matter” and the “GIP Seine-Aval ZOOGLOBAL project”. Dominique Menu is acknowledged for technical help concerning the copepod experiment devices, and Regis Sion for advices and help on the use of the fast camera. Marion Roussin and Guéno le Alizard are thanked for help with copepod sorting. We acknowledge discussion with Massimo Cencini and Guido Boffetta. H.A. is supported by the Ph.D. grant for interdisciplinary research “Allocation President 2013” of the Universit  de Lille 1.

-
- [1] H. C. Berg and L. Turner, Movement of microorganisms in viscous environments, *Nature* **278**, 349 (1979).
 [2] R. Di Leonardo, L. Angelani, D. Dell’Arciprete, G. Ruocco, V. Iebba, S. Schippa, M. P. Conte, F. Mecarini, F. De Angelis, and

- E. Di Fabrizio, Bacterial ratchet motors, *Proc. Natl. Acad. Sci. USA* **107**, 9541 (2010).
 [3] A. W. Visser and T. Ki rboe, Plankton motility patterns and encounter rates, *Oecologia* **148**, 538 (2006).

- [4] E. Lauga, Bacterial hydrodynamics, *Annu. Rev. Fluid Mech.* **48**, 105 (2016).
- [5] J. Teran, L. Fauci, and M. Shelley, Viscoelastic Fluid Response can Increase the Speed and Efficiency of a Free Swimmer, *Phys. Rev. Lett.* **104**, 038101 (2010).
- [6] J. P. Hernandez-Ortiz, C. G. Stoltz, and M. D. Graham, Transport and Collective Dynamics in Suspensions of Confined Swimming Particles, *Phys. Rev. Lett.* **95**, 204501 (2005).
- [7] A. Baskaran and M. C. Marchetti, Statistical mechanics and hydrodynamics of bacterial suspensions, *Proc. Natl. Acad. Sci. USA* **106**, 15567 (2009).
- [8] R. A. Lambert, F. Picano, W. P. Breugem, and L. Brandt, Active suspensions in thin films: Nutrient uptake and swimmer motion, *J. Fluid Mech.* **733**, 528 (2013).
- [9] E. Lushi, H. Wioland, and R. E. Goldstein, Fluid flows created by swimming bacteria drive self-organization in confined suspensions, *Proc. Natl. Acad. Sci. USA* **111**, 9733 (2014).
- [10] K. Drescher, J. Dunkel, L. H. Cisneros, S. Ganguly, and R. E. Goldstein, Fluid dynamics and noise in bacterial cell-cell and cell-surface scattering, *Proc. Natl. Acad. Sci. USA* **108**, 10940 (2011).
- [11] C. Hohenegger and M. J. Shelley, Stability of active suspensions, *Phys. Rev. E* **81**, 046311 (2010).
- [12] J. Dunkel, S. Heidenreich, K. Drescher, H. H. Wensink, M. Bär, and R. E. Goldstein, Fluid Dynamics of Bacterial Turbulence, *Phys. Rev. Lett.* **110**, 228102 (2013).
- [13] A. Kaiser, A. Peshkov, A. Sokolov, B. ten Hagen, H. Löwen, and I. S. Aranson, Transport Powered by Bacterial Turbulence, *Phys. Rev. Lett.* **112**, 158101 (2014).
- [14] O. A. Croze, G. Sardina, M. Ahmed, M. A. Bees, and L. Brandt, Dispersion of swimming algae in laminar and turbulent channel flows: consequences for photobioreactors, *J. R. Soc. Interface* **10**, 20121041 (2013).
- [15] W. M. Durham, E. Climent, M. Barry, F. De Lillo, G. Boffetta, M. Cencini, and R. Stocker, Turbulence drives microscale patches of motile phytoplankton, *Nat. Commun.* **4**, 1 (2013).
- [16] T. J. Pedley and J. O. Kessler, Hydrodynamic phenomena in suspensions of swimming microorganisms, *Annu. Rev. Fluid Mech.* **24**, 313 (1992).
- [17] T. A. Warnaas and M. Hondzo, Small-scale fluid motion mediates growth and nutrient uptake of *Selenastrum capricornutum*, *Freshwater Biol.* **51**, 999 (2006).
- [18] J. S. Guasto, R. Rusconi, and R. Stocker, Fluid mechanics of planktonic microorganisms, *Annu. Rev. Fluid Mech.* **44**, 373 (2012).
- [19] M. S. Bergstedt, M. M. Hondzo, and Cotner J. B, Effects of small scale fluid motion on bacterial growth and respiration, *Freshwater Biol.* **49**, 28 (2004).
- [20] R. Stocker, Marine microbes see a sea of gradients, *Science* **338**, 628 (2012).
- [21] K. Gustavsson, F. Berglund, P. R. Jonsson, and B. Mehlig, Preferential Sampling and Small-Scale Clustering of Gyrotactic Microswimmers in Turbulence, *Phys. Rev. Lett.* **116**, 108104 (2016).
- [22] F. De Lillo, M. Cencini, W. M. Durham, M. Barry, R. Stocker, E. Climent, and G. Boffetta, Turbulent Fluid Acceleration Generates Clusters of Gyrotactic Microorganisms, *Phys. Rev. Lett.* **112**, 044502 (2014).
- [23] C. Frangoulis, E. D. Christou, and J. H. Hecq, Comparison of marine copepod outfluxes: Nature, rate, fate and role in the carbon and nitrogen cycles, *Adv. Marine Biol.* **47**, 253 (2005).
- [24] S. Satapoomin, Carbon content of some common tropical andaman sea copepods, *J. Plankton Res.* **21**, 2117 (1999).
- [25] S. H. Jonasdottir, A. W. Visser, K. Richardson, and M. R. Heath, Seasonal copepod lipid pump promotes carbon sequestration in the deep north atlantic, *Proc. Natl. Acad. Sci. U.S.A.* **112**, 12122 (2015).
- [26] T. C. Walter and G. Boxshall, "World of copepods database", <http://www.marinespecies.org/copepoda> (2015).
- [27] G. H. Theilacker and A. M. Kimball, Rotifers and copepods as larval fish foods, *CalCOFI Rep.* **25**, 80 (1984).
- [28] A. Souissi, S. Souissi, and B. W. Hansen, Physiological improvement in the copepod *eurytemora affinis* through thermal and multi-generational selection, *Aquaculture Res.* (2014).
- [29] J. Yen, Life in transition: balancing inertial and viscous forces by planktonic copepods, *Biol. Bull.* **198**, 213 (2000).
- [30] T. Kiørboe, E. Saiz, and A. Visser, Hydrodynamic signal perception in the copepod *acartia tonsa*, *Marine Ecol. Progr. Ser.* **179**, 97 (1999).
- [31] T. Kiørboe and A. Visser, Predator and prey perception in copepods due to hydromechanical signals, *Marine Ecol. Progr. Ser.* **179**, 81 (1999).
- [32] T. Kiørboe, *A Mechanistic Approach to Plankton Ecology* (Princeton University Press, Princeton, NJ, 2008).
- [33] E. J. Buskey, P. H. Lenz, and D. K. Hartline, Escape behavior of planktonic copepods in response to hydrodynamic disturbances: high speed video analysis, *Marine Ecol. Progr. Ser.* **235**, 135 (2002).
- [34] E. J. Buskey and D. K. Hartline, High-speed video analysis of the escape responses of the copepod *acartia tonsa* to shadows, *Biol. Bull.* **204**, 28 (2003).
- [35] P. H. Lenz and D. K. Hartline, Reaction times and force production during escape behavior of a calanoid copepod, *undinula vulgaris*, *Marine Biol.* **133**, 249 (1999).
- [36] C. H. Lee, H. U. Dahms, S. H. Cheng, S. Souissi, F. G. Schmitt, R. Kumar, and J. S. Hwang, Mating behavior of *pseudodiaptomus annandalei* (copepoda, calanoida) at calm and hydrodynamically disturbed waters, *Marine Biol.* **158**, 1085 (2011).
- [37] S. Souissi, F. G. Michalec, G. Dur, S. Mahjoub, F. G. Schmitt, and J. S. Hwang, How does salinity influence the swimming speed of the estuarine calanoid copepod *eurytemora affinis*? Reply, *J. Plankton Res.* **32**, 1227 (2010).
- [38] F. G. Schmitt and L. Seuront, Intermittent turbulence and copepod dynamics: Increase in encounter rates through preferential concentration, *Marine Syst.* **70**, 263 (2008).
- [39] D. A. Fields, S. D. Shema, H. I. Browman, T. Q. Browne, and A. B. Skiftesvik, Light primes the escape response of the calanoid copepod, *calanus finmarchicus*, *PLoS ONE* **7**, e39594 (2012).
- [40] M. Moison, F. G. Schmitt, S. Souissi, L. Seuront, and J. S. Hwang, Symbolic dynamics and entropies of copepod behavior under non-turbulent and turbulent conditions, *Marine Syst.* **77**, 388 (2009).
- [41] R. J. Waggett and E. J. Buskey, Copepod escape behavior in non-turbulent and turbulent hydrodynamic regimes, *Marine Ecol. Progr. Ser.* **334**, 193 (2007).

- [42] J. Yen, K. D. Rasberry, and D. R. Webster, Quantifying copepod kinematics in a laboratory turbulence apparatus, *Marine Syst.* **69**, 283 (2008).
- [43] F. G. Michalec, S. Souissi, and M. Holzner, Turbulence triggers vigorous swimming but hinders motion strategy in planktonic copepods, *J. R. Soc. Interface* **12**, 20150158 (2015).
- [44] F. G. Michalec, F. G. Schmitt, S. Souissi, and M. Holzner, Characterization of intermittency in zooplankton behavior in turbulence, *Eur. Phys. J. E* **38**, 108 (2015).
- [45] H. Jiang and T. R. Osborn, Hydrodynamics of copepods: A review, *Surveys Geophys.* **25**, 339 (2004).
- [46] H. Jiang and G. A. Paffenhofer, Hydrodynamic signal perception by the copepod oithona plumifera, *Marine Ecol. Progr. Ser.* **373**, 37 (2008).
- [47] H. Jiang and T. Kiørboe, The fluid dynamics of swimming by jumping in copepods, *J. R. Soc. Interface* **8**, 1090 (2011).
- [48] T. Kiørboe, A. Anderson, V. J. Langlois, and H. H. Jakobsen, Unsteady motion: Escape jumps in planktonic copepods, their kinematics and energetics, *J. R. Soc. Interface* **7**, 1591 (2010).
- [49] J. Yen and D. M. Fields, Escape response of acartia hudsonica (copepoda) nauplii from the flow field of temora longicornis (copepoda), *Ergebnisse der Limnologie/ Advances in Limnology. Stuttgart* **36**, 123 (1992).
- [50] P. H. Lenz, A. E. Hower, and D. K. Hartline, Force production during pereopod power strokes in calanus finmarchicus, *Marine Syst.* **49**, 133 (2004).
- [51] L. A. Duren and J. J. Videler, Escape from viscosity: The kinematics and hydrodynamics of copepod foraging and escape swimming, *J. Exp. Biol.* **206**, 269 (2003).
- [52] F. Toschi and E. Bodenschatz, Lagrangian properties of particles in turbulence, *Annu. Rev. Fluid Mech.* **41**, 375 (2009).
- [53] G. A. Voth, A. La Porta, A. M. Crawford, J. Alexander, and E. Bodenschatz, Measurement of particle accelerations in fully developed turbulence, *J. Fluid Mech.* **469**, 121 (2002).
- [54] S. Parsa, E. Calzavarini, F. Toschi, and G. A. Voth, Rotation Rate of Rods in Turbulent Fluid Flow, *Phys. Rev. Lett.* **109**, 134501 (2012).
- [55] L. Chevillard and C. Meneveau, Orientation dynamics of small, triaxial-ellipsoidal particles in isotropic turbulence, *J. Fluid Mech.* **737**, 571 (2013).
- [56] C. Zhan, G. Sardina, E. Lushi, and L. Brandt, Accumulation of motile elongated micro-organisms in turbulence, *J. Fluid Mech.* **739**, 22 (2014).
- [57] R. Stocker and W. M. Durham, Tumbling for stealth? *Science* **325**, 400 (2009).
- [58] J. O. Kessler, Hydrodynamic focusing of motile algal cells, *Nature* **313**, 218 (1985).
- [59] G. B. Jeffery, The motion of ellipsoidal particles immersed in a viscous fluid, *Proc. Roy. Soc. A* **102**, 161 (1992).
- [60] B. R. MacKenzie and W. C. Leggett, Wind-based models for estimating the dissipation rates of turbulent energy in aquatic environments: Empirical comparisons, *Marine Ecol. Progr. Ser.* **94**, 207 (1993).
- [61] J. Jiménez, Oceanic turbulence at millimeter scales, *Sci. Mar.* **61**, 47 (1997).
- [62] K. D. Squires and J. K. Eaton, Particle response and turbulence modification in isotropic turbulence, *Phys. Fluids A* **2**, 1191 (1990).
- [63] S. Elghobashi and G.C. Truesdell, On the twoway interaction between homogeneous turbulence and dispersed solid particles. i: Turbulence modification, *Phys. Fluids A* **5**, 1790 (1993).
- [64] See Supplemental Material at <http://link.aps.org/supplemental/10.1103/PhysRevE.93.043117> for 2D visualization of copepod's motion in turbulent flow.
- [65] P. Grassberger and I. Procaccia, Measuring the strangeness of strange attractors, *Physica D: Nonlin. Phenom.* **9**, 189 (1983).
- [66] G. Falkovich, K. Gawedzki, and M. Vergassola, Particles and fields in fluid turbulence, *Rev. Mod. Phys.* **73**, 913 (2001).
- [67] U. Frisch, *Turbulence: The Legacy of A. N. Kolmogorov* (Cambridge University Press, Cambridge, 1995).
- [68] A. Genin, J. S. Jaffe, R. Reef, C. Richter, and P. J. Franks, Swimming against the flow: A mechanism of zooplankton aggregation, *Science* **308**, 860 (2005).
- [69] B. J. Rothschild and T. R. Osborn, Small-scale turbulence and plankton contact rates, *J. Plankton Res.* **10**, 465 (1998).
- [70] G. T. Evans, The encounter speed of moving predator and prey, *J. Plankton Res.* **11**, 415 (1989).
- [71] A. W. Visser and B. R. MacKenzie, Turbulence-induced contact rates of plankton: The question of scale, *Marine Ecol. Progr. Ser.* **166**, 307 (1998).
- [72] D. M. Lewis and T. J. Pedley, Planktonic contact rates in homogeneous isotropic turbulence: Theoretical predictions and kinematic simulations, *J. Theor. Biol.* **205**, 377 (2000).
- [73] L. P. Wang, A. S. Wexler, and Y. Zhou, Statistical mechanical descriptions of turbulent coagulation, *Phys. Fluids* **10**, 2647 (1998).
- [74] W. C. Reade and L. R. Collins, Effect of preferential concentration on turbulent collision rates, *Phys. Fluids* **12**, 2530 (2000).
- [75] L. R. Collins and A. Keswani, Reynolds number scaling of particle clustering in turbulent aerosols, *New J. Phys.* **6**, 119 (2004).
- [76] D. Devreker, S. Souissi, J. C. Molinero, and F. Nkubito, Trade-offs of the copepod eurytemora affinis in mega-tidal estuaries: Insights from high-frequency sampling in the seine estuary, *J. Plankton Res.* **30**, 1329 (2008).
- [77] F. G. Schmitt, D. Devreker, G. Dur, and S. Souissi, Direct evidence of tidally-oriented behavior of the copepod eurytemora affinis in the seine estuary, *Ecol. Res.* **26**, 773 (2011).
- [78] P. Cury and C. Roy, Optimal environmental window and pelagic fish recruitment success in upwelling areas, *Can. J. Fish. Aquatic Sci.* **46**, 670 (1989).
- [79] B. R. MacKenzie, Turbulence, larval fish ecology and fisheries recruitment: A review of field studies, *Oceanol. Acta* **23**, 357 (2000).