



HAL
open science

A two-way model for nonlinear acoustic waves in a non-uniform lattice of Helmholtz resonators

Jean-François Mercier, Bruno Lombard

► **To cite this version:**

Jean-François Mercier, Bruno Lombard. A two-way model for nonlinear acoustic waves in a non-uniform lattice of Helmholtz resonators. *Wave Motion*, 2017, 72, pp.260-275. 10.1016/j.wavemoti.2017.04.004 . hal-01312801v3

HAL Id: hal-01312801

<https://hal.science/hal-01312801v3>

Submitted on 5 Apr 2017

HAL is a multi-disciplinary open access archive for the deposit and dissemination of scientific research documents, whether they are published or not. The documents may come from teaching and research institutions in France or abroad, or from public or private research centers.

L'archive ouverte pluridisciplinaire **HAL**, est destinée au dépôt et à la diffusion de documents scientifiques de niveau recherche, publiés ou non, émanant des établissements d'enseignement et de recherche français ou étrangers, des laboratoires publics ou privés.

A two-way model for nonlinear acoustic waves in a non-uniform lattice of Helmholtz resonators

Jean-François Mercier^{a,*}, Bruno Lombard^b

^a*POEMS, CNRS UMR 7231 CNRS-INRIA-ENSTA, 91762 Palaiseau, France*

^b*Aix Marseille Univ, CNRS, Centrale Marseille, LMA, Marseille, France*

Abstract

Propagation of high amplitude acoustic pulses is studied in a 1D waveguide connected to a lattice of Helmholtz resonators. An homogenized model has been proposed by Sugimoto (J. Fluid. Mech., **244** (1992)), taking into account both the nonlinear wave propagation and various mechanisms of dissipation. This model is extended here to take into account two important features: resonators of different strengths and back-scattering effects. An energy balance is obtained, and a numerical method is developed. A closer agreement is reached between numerical and experimental results. Numerical experiments are also proposed to highlight the effect of defects and of disorder.

Keywords: nonlinear acoustics, solitary waves, Burgers equation, fractional derivatives, diffusive representation, time splitting, shock-capturing schemes

1. Introduction

We are concerned here with the dynamics of nonlinear waves in lattices. This subject has stimulated researches in a wide range of areas, including the theory of solitons and the dynamics of discrete networks. Numerous studies have been led in electromagnetism and optics [20], and many physical phenomena have been highlighted, such as discrete breathers [24, 3, 13], chaotic phenomena [15, 50], dynamical multistability [49, 27] and solitons or solitary waves [26, 19]. We focus more specifically on solitary waves, which

*Corresponding author. Tel.: +33 491 16 44 13.

Email addresses: jean-francois.mercier@ensta.fr (Jean-François Mercier), lombard@lma.cnrs-mrs.fr (Bruno Lombard)

have been first observed and studied for surface waves in shallow water [41]. The main feature of these waves is that they can propagate without change of shape and with a velocity depending of their amplitude [39]. They have been studied in many physical systems, as in fluid dynamics, optics or plasma physics.

For elastic waves, numerous works have highlighted the existence of solitary waves in microstructured solids [12], periodic structures such as lattices or crystals [6, 17, 18], elastic layers [23, 31, 33], layered structures coated by film of soft material [22], periodic chains of elastics beads [1, 8, 35] and uniform or inhomogeneous rods [7, 21, 2].

On the contrary, only a few works have dealt with acoustic solitary waves. Such a lack is mainly explained by the fact that the intrinsic dispersion of acoustic equations is too low to compete with the nonlinear effects, preventing from the occurrence of solitons. To observe these waves, geometrical dispersion must be introduced. It has been the object of the works of Sugimoto and his co-authors [45, 43, 44, 46], where the propagation of nonlinear waves was considered in a tube connected to an array of Helmholtz resonators. A model incorporating both the nonlinear wave propagation in the tube and the nonlinear oscillations in the resonators has been proposed. Theoretical and experimental investigations have shown the existence of acoustic solitary waves [45]. We have developed a numerical modeling, and we have successfully compared simulations with experimental data [40, 28].

One fundamental assumption underlying Sugimoto's model is that all the resonators are the same, which allows to use a homogenization process. The drawback of this approach is that the reflection of an incident wave by a defect (for instance, a resonator different from the others) cannot be considered. Similarly, wave propagation across resonators with variable features cannot be investigated. However, the case of variable resonators is important when studying the influence of manufacturing defects or the influence of aging of the guiding device on the wave propagation.

The aim of this paper is to remedy these limitations, by building a model predicting two-way propagation across variable resonators. For this purpose, we introduce a discrete description of the resonators. A consequence is that the requirement of a long wavelength is no longer necessary. Second, we allow the reflection of waves. Finally, we reformulate the viscothermal losses, which leads to a formulation suitable for an energy balance. The new model writes as a single system coupling three unknowns, the velocity of the right-going wave u^+ , the velocity of the left-going wave u^- and the total excess pressure

in the resonators p , induced by both waves:

$$\begin{cases} \frac{\partial u^+}{\partial t} + \frac{\partial}{\partial x} \left(a_0 u^+ + b \frac{(u^+)^2}{2} \right) + \frac{c}{a_0} \frac{\partial^{1/2}}{\partial t^{1/2}} u^+ - d \frac{\partial^2 u^+}{\partial x^2} = -e(1 - 2mp) \frac{\partial p}{\partial t}, \\ \frac{\partial u^-}{\partial t} + \frac{\partial}{\partial x} \left(-a_0 u^- + b \frac{(u^-)^2}{2} \right) + \frac{c}{a_0} \frac{\partial^{1/2}}{\partial t^{1/2}} u^- - d \frac{\partial^2 u^-}{\partial x^2} = +e(1 - 2mp) \frac{\partial p}{\partial t}, \\ \frac{\partial^2 p}{\partial t^2} + f \frac{\partial^{3/2}}{\partial t^{3/2}} p + gp - m \frac{\partial^2 (p^2)}{\partial t^2} + n \left| \frac{\partial p}{\partial t} \right| \frac{\partial p}{\partial t} = h(u^+ - u^-). \end{cases} \quad (1)$$

The precise meaning of u^\pm , p and the coefficients in (1) will be detailed along section 2. Some of the coefficients incorporate the individual features of the resonators and vary with x .

The paper is organized as follows. In section 2, the general equations in the tube and in the resonators are given, and the new model (1) is derived. In section 3, a first-order formulation is followed: it allows to determine an energy balance and also to build a numerical scheme. In section 4, comparisons with experimental data show that a closer agreement is obtained than with the original Sugimoto's model. Numerical simulations are performed to investigate the properties of the acoustic solitary waves, in particular the robustness to defects and to random disorder. Conclusions and prospects are drawn in section 5. Technical results are given in the appendices.

2. The new model

In this part, we derive Eq. (1). The configuration under study is made up of an air-filled tube connected to uniformly distributed cylindrical Helmholtz resonators (see Fig. 1). The geometrical parameters are the radius of the guide R , the axial spacing between successive resonators D , the radius of the neck r , the length of the neck L , the radius of the cavity r_h and the height of the cavity H , which can vary from one resonator to the other. The cross-sectional area of the guide is $A = \pi R^2$ and that of the neck is $B = \pi r^2$, the volume of each resonator is $V = \pi r_h^2 H$.

2.1. Equations in the tube

2.1.1. General equations

Here we recall briefly the general equations governing the nonlinear acoustic waves in a tube [43]. The physical parameters are the ratio of specific

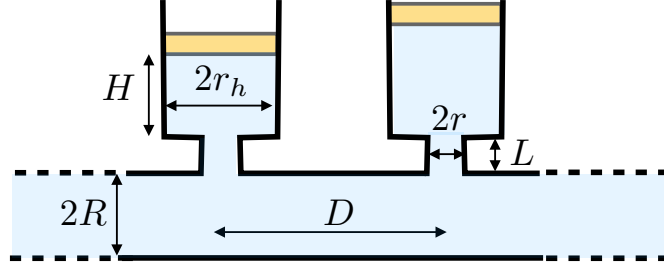


Figure 1: sketch of the guide connected with Helmholtz resonators.

heats at constant pressure and volume γ ; the pressure at equilibrium p_0 ; the density at equilibrium ρ_0 ; the Prandtl number Pr ; the kinematic viscosity ν ; and the ratio of shear and bulk viscosities μ_v/μ . One defines the linear sound speed a_0 , the coefficient of nonlinearity b , the sound diffusivity ν_d and the coefficient of attenuation d by

$$a_0 = \sqrt{\frac{\gamma p_0}{\rho_0}}, \quad b = \frac{\gamma + 1}{2}, \quad \nu_d = \nu \left(\frac{4}{3} + \frac{\mu_v}{\mu} + \frac{\gamma - 1}{\text{Pr}} \right), \quad d = \frac{\nu_d}{2}. \quad (2)$$

The characteristic angular frequency ω and the parameter of nonlinearity ε are

$$\omega = \frac{2\pi a_0}{\lambda}, \quad \varepsilon = \frac{\gamma + 1}{2} \frac{u}{a_0}, \quad (3)$$

where λ is the typical wavelength imposed by the source, and u is the amplitude of the gas velocity. The following assumptions are made:

- low-frequency regime ($\omega < \omega^* = \frac{1.84 a_0}{R}$), so that only the plane mode propagates [4];
- weak acoustic nonlinearity: $\varepsilon \ll 1$ [16].

Thanks to the first assumption, we can restrict to unidirectional propagation. Under the second assumption of weak nonlinearities, we are allowed to use Riemann invariants along the characteristics, noted with the \pm subscript according to the way of propagation. Then, starting from the compressible Navier-Stokes equations, the flow in the tube can be described by the following nonlinear equation for the horizontal velocities u^\pm [43]:

$$\frac{\partial u^\pm}{\partial t} + (\pm a_0 + b u^\pm) \frac{\partial u^\pm}{\partial x} = \pm \frac{a_0}{2\rho_0} F^\pm + d \frac{\partial^2 u^\pm}{\partial x^2}, \quad (4)$$

with

$$F^\pm(x) = \frac{1}{A} \int_{\sigma(x)} (\rho v_n^\pm)(x, y(s), z(s)) ds. \quad (5)$$

The diffusivity of sound in the tube is introduced by the coefficient d .

F^\pm is the mean mass flux at position x , with v_n^\pm the small deviation of the component of the velocity normal inward to the inner surface of the tube (v_n^\pm lies in the $y - z$ plane). The integral is taken along the periphery $\sigma(x)$ of the cross-section at x (see Fig. 2) with s the curvilinear abscissa. F^\pm is due to the coupling between the main flow u^\pm and two areas, represented in beige on Fig. 3. It takes into account the connections of the main tube with the resonators, and the wall friction due to the presence of a viscous boundary layer on the boundary of the tube.

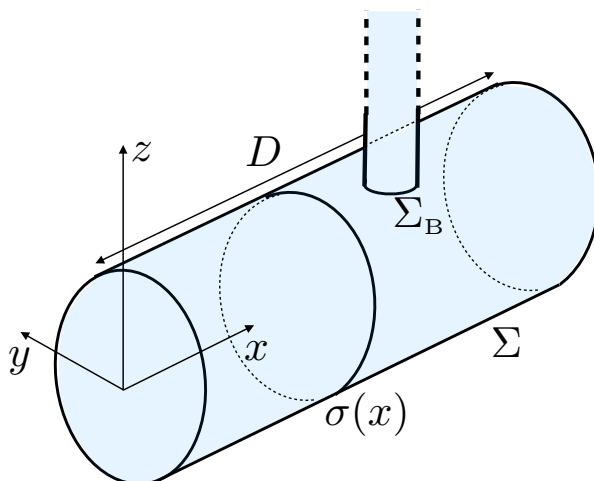


Figure 2: perspective view of the tube. The unit portion Σ of the tube is connected to one resonator through the surface Σ_B . σ is a path along the boundary of a cross section of the tube.

We note Σ a part of length D (thus connected to only one resonator) of the tube, represented in Fig. 2. We note Σ_B the part of Σ connected to the cylindrical resonator, of area B . For simplicity, the junction between a resonator and the main tube is approximated by as a disc. The real shape is more complicated: it is the intersection of two perpendicular tubes of

different diameters. It follows [43]:

$$\begin{aligned}\rho v_n^\pm &= -Q \quad \text{on } \Sigma_B, \\ &= \rho_0 v_b^\pm \quad \text{on } \Sigma \setminus \Sigma_B,\end{aligned}\tag{6}$$

with

$$\begin{aligned}Q &= \frac{V}{a_0^2 B} (1 - 2mp) \frac{\partial p}{\partial t}, \\ v_b^\pm &= C \sqrt{\nu} \frac{\partial^{-1/2}}{\partial t^{-1/2}} \frac{\partial u^\pm}{\partial x},\end{aligned}\tag{7}$$

where

$$m = \frac{\gamma - 1}{2\gamma p_0}.\tag{8}$$

Q is the mass flux density over B into the resonator cavity (see Fig. 2). The reader is referred to the sections 2-1 and 2-2 of [43] for a detailed derivation of (7). The expression of Q follows from the conservation laws in the throat and from the adiabatic relation in the cavity, up to the second order.

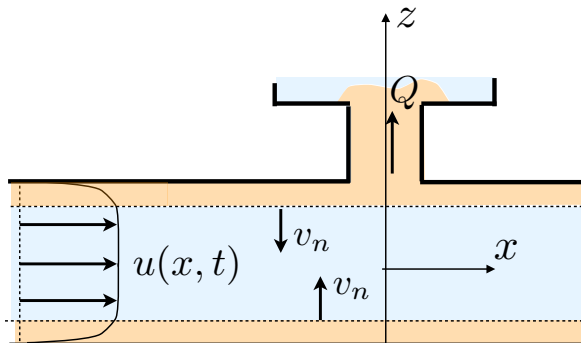


Figure 3: definition of v_n^\pm . In beige is represented the viscous boundary layer and the inside of the resonators. v_n^\pm is defined on the boundary of this beige area.

In (7), v_b^\pm is the velocity at the edge of the viscothermal boundary layer. It involves a fractional operator of order $-1/2$, thus proportional to $1/(i\omega)^{1/2}$ in the frequency domain [5]. C is the dissipation in the boundary layer:

$$C = 1 + \frac{\gamma - 1}{\sqrt{\text{Pr}}}.\tag{9}$$

These expressions are obtained by solving matching conditions between the boundary layer and the main flow in the guide (section 2-1 of [42]).

The Riemann-Liouville fractional integral of order 1/2 of a causal function $w(t)$ (thus $w(0) = 0$) is defined by

$$\frac{\partial^{-1/2}}{\partial t^{-1/2}} w(t) = \frac{H(t)}{\sqrt{\pi t}} * w = \frac{1}{\sqrt{\pi}} \int_0^t (t - \tau)^{-1/2} w(\tau) d\tau, \quad (10)$$

where $*$ is the convolution product in time, and $H(t)$ is the Heaviside step function [38].

2.1.2. Determination of the flux F^\pm

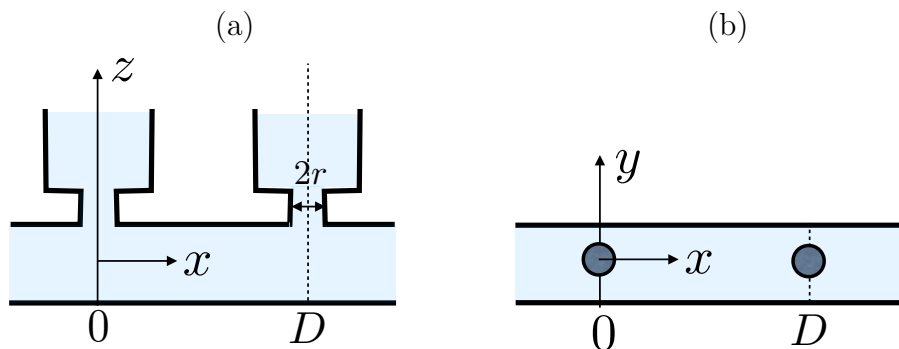


Figure 4: portion of length D of the tube. View from the side (a). View from above (b).

For convenience, Σ is taken as the part $x \in]-r, D-r[$, the part Σ_B being then centered at $x = 0$, located in $x \in]-r, r[$ (see Fig. 4). Then the flux F^\pm can be determined at each position x , depending on two cases.

Case 1: $x \in]r, D-r[$. Then $\sigma(x)$ is a disc of radius R and $\rho v_n^\pm = \rho_0 v_b^\pm$ on σ . Therefore

$$\begin{aligned} F^\pm(x) &= \frac{1}{A} \int_0^{2\pi} (\rho v_n^\pm)(x, R \sin \theta, R \cos \theta) R d\theta, \\ &= \frac{1}{A} (2\pi R) \rho_0 v_b^\pm(x), \end{aligned}$$

where θ is measured with respect to the z axis (as α in Fig. 5(a)).

Case 2: $x \in]-r, r[$. A cross section of the tube at $x \in]-r, r[$ is sketched in Fig. 5(a). The integration path $\sigma(x)$ is made of two parts: (i) a line of length $2\ell(x)$ on which $\rho v_n^\pm = -Q$; (ii) a portion of a circle of radius R , between the angles $\theta = \alpha$ and $\theta = 2\pi - \alpha$, on which $\rho v_n^\pm = \rho_0 v_b^\pm$. Using Fig. 5(b) representing Σ_B seen from above, it follows that:

$$\ell(x) = \begin{cases} 0 & \text{for } x \in]r, D - r[, \\ \sqrt{r^2 - x^2} & \text{for } x \in]-r, r[. \end{cases} \quad (11)$$

Using Fig. 5(a), one finds also that $\alpha(x) = \arcsin(\ell(x)/R)$. Then (5) becomes:

$$\begin{aligned} F^\pm(x) &= \frac{1}{A} \left[\int_{\alpha(x)}^{2\pi - \alpha(x)} (\rho_0 v_b^\pm)(x, R \sin \theta, R \cos \theta) R d\theta - \int_{-\ell(x)}^{\ell(x)} Q(x) ds \right], \\ &= \frac{2}{A} \{ [\pi - \alpha(x)] R \rho_0 v_b^\pm(x) - Q(x) \ell(x) \}. \end{aligned}$$

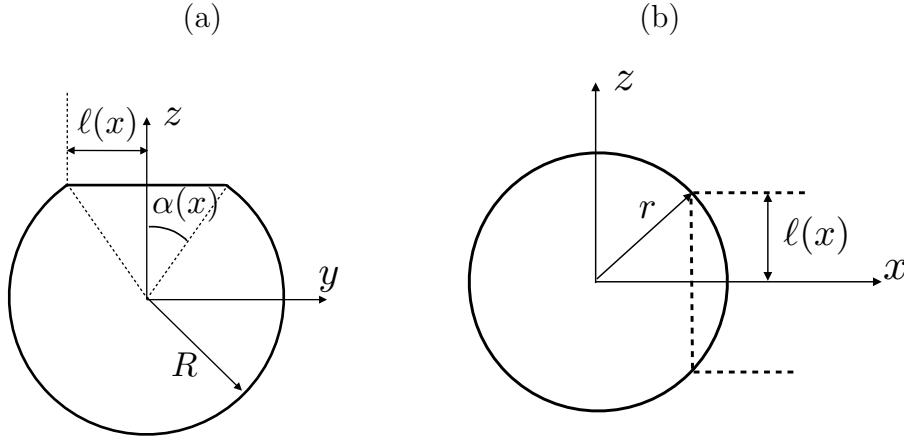


Figure 5: (a) $\sigma(x)$ for $x \in]-r, r[$; (b) view from above of the resonators in $x \in]-r, r[$.

To sum up, using the values of Q and v_b^\pm from (7), one deduces that for all $x \in]-r, D - r[$:

$$\frac{a_0}{2\rho_0} F^\pm = c(x) \frac{\partial^{-1/2}}{\partial t^{-1/2}} \frac{\partial u^\pm}{\partial x} e(x) (1 - 2mp) \frac{\partial p}{\partial t}, \quad (12)$$

where we have introduced the functions

$$\begin{cases} c(x) &= c_0 \left[1 - \frac{1}{\pi} \arcsin \left(\frac{\ell(x)}{R} \right) \right], \\ e(x) &= e_0 \ell(x), \end{cases} \quad (13)$$

with the coefficients

$$c_0 = \frac{C a_0 \sqrt{v}}{R}, \quad e_0 = \frac{V}{\rho_0 a_0 AB}, \quad (14)$$

and V the volume of the resonator at $x = 0$.

This result has been obtained for a unit part of the tube located in $x \in]-r, D-r[$. Now, we consider the entire tube, in which the resonators are

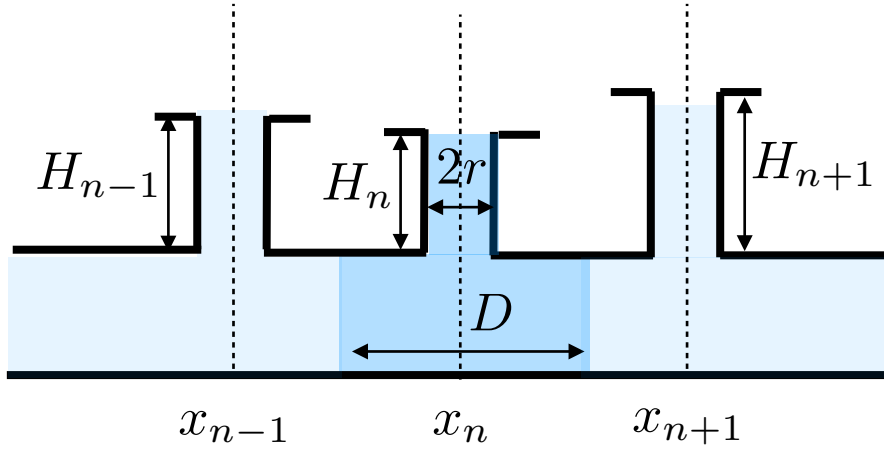


Figure 6: side view of the guide connected to Helmholtz resonators. The i -th cell is highlighted in grey.

centered at $x_i = iD$, $i = 1, 2, \dots$ (see Fig. 6). We note V_i the volume (and H_i the height) of the i -th resonator at x_i . In the i -th cell $x \in [x_i - D/2, x_i + D/2]$ (represented in grey on Fig. 6) and based on (12), Eq. (4) takes the form

$$\frac{\partial u^\pm}{\partial t} + \frac{\partial}{\partial x} \left(\pm a_0 u^\pm + b \frac{(u^\pm)^2}{2} \right) \mp c(x) \frac{\partial^{-1/2}}{\partial t^{-1/2}} \frac{\partial u^\pm}{\partial x} - d \frac{\partial^2 u^\pm}{\partial x^2} = \mp e(x) (1 - 2mp) \frac{\partial p}{\partial t}. \quad (15)$$

The coefficients $c(x)$ and $e(x)$ are defined by

$$\begin{cases} c(x) &= c_0 \left[1 - \frac{1}{\pi} \arcsin \left(\frac{\ell_i(x)}{R} \right) \right], \\ e(x) &= e_i \ell_i(x), \end{cases} \quad (16)$$

where

$$\ell_i(x) = \begin{cases} 0 & \text{for } r < |x - x_i| \leq \frac{D}{2}, \\ \sqrt{r^2 - (x - x_i)^2} & \text{for } |x - x_i| \leq r, \end{cases} \quad (17)$$

c_0 is defined in (14), and

$$e_i = \frac{V_i}{\rho_0 a_0 AB}. \quad (18)$$

2.1.3. Reformulation of the viscothermal losses

The fractional integrals in (15) have two drawbacks: they prevent from obtaining an energy balance, and the dispersion relation is singular at zero frequency [30]. It is therefore preferable to replace them by fractional derivatives. Based on the linear approximation $(\partial u^\pm / \partial t) \pm a_0 (\partial u^\pm / \partial x) \approx 0$, one has

$$\frac{\partial^{-1/2}}{\partial t^{-1/2}} \frac{\partial u^\pm}{\partial x} \approx \mp \frac{1}{a_0} \frac{\partial^{1/2}}{\partial t^{1/2}} u^\pm. \quad (19)$$

The rigorous derivation of this step is detailed in Appendix A. Injecting (19) in (15) yields finally the first two equations of (1).

2.2. Equation in the resonators

The excess pressure p in a resonator of volume V satisfies the equation [36, 37]:

$$\frac{\partial^2 p}{\partial t^2} + f \frac{\partial^{3/2} p}{\partial t^{3/2}} + gp - m \frac{\partial^2 p^2}{\partial t^2} + n \left| \frac{\partial p}{\partial t} \right| \frac{\partial p}{\partial t} = gp', \quad (20)$$

where

$$f = \frac{2\sqrt{\nu}}{r} \frac{L'}{L_e}, \quad g = \frac{a_0^2 B}{L_e V}, \quad n = \frac{V}{B L_e \rho_0 a_0^2}, \quad (21)$$

and where p' is the excess pressure at the mouth of the tube. The coefficients m in (8) and n in (21) describe nonlinear processes in the resonators. The semi-empirical coefficient n accounts for the jet loss resulting from the difference in inflow and outflow patterns [43, 46]. These nonlinear processes have to be included to get a good agreement with the experimental measurements

[40]. The Caputo fractional derivative of order $3/2$ is obtained by applying (10) to $\partial^2 p / \partial t^2$. Corrected lengths have been introduced: $L' = L + 2r$ accounts for the viscous end corrections, and the corrected length $L_e = L + \eta$ accounts for the end corrections at both ends of the neck, where $\eta \approx 0.82r$ is determined experimentally [43].

In the one-way model [43], a linear approximation is used to link the right-going fields in the tube: $p'^+ = (\gamma p_0 / a_0) u^+$. In a symmetric way, $p'^- = -(\gamma p_0 / a_0) u^-$. Here p' is induced by both the right-going waves and the left-going waves; assuming linearity gives

$$p' = p'^+ + p'^- = \frac{\gamma p_0}{a_0} (u^+ - u^-). \quad (22)$$

Injecting (22) in (20) leads to

$$\frac{\partial^2 p}{\partial t^2} + f \frac{\partial^{3/2} p}{\partial t^{3/2}} + gp - m \frac{\partial^2 p^2}{\partial t^2} + n \left| \frac{\partial p}{\partial t} \right| \frac{\partial p}{\partial t} = h(u^+ - u^-), \quad (23)$$

with $h = g(\gamma p_0 / a_0)$.

For resonators of variable volume, Eq. (23) becomes, for $|x - x_i| \leq r$ ($i = 1, 2, \dots$)

$$\frac{\partial^2 p}{\partial t^2} + f \frac{\partial^{3/2} p}{\partial t^{3/2}} + g(x)p - m \frac{\partial^2 p^2}{\partial t^2} + n(x) \left| \frac{\partial p}{\partial t} \right| \frac{\partial p}{\partial t} = h(x)(u^+ - u^-), \quad (24)$$

with

$$g(x) = \frac{a_0^2 B}{L_e V_i}, \quad n(x) = \frac{V_i}{B L_e \rho_0 a_0^2}, \quad h(x) = \frac{\gamma p_0}{a_0} g(x). \quad (25)$$

One recognizes the third equation in (1). The functions $g(x)$, $h(x)$ and $n(x)$ depend on x because the resonators have different heights, but they are constant on each resonator. They just depend on i , the index of the resonators. The equation (24) is not solved outside the resonators (that is on $r < |x - x_i| \leq D/2$) contrary to Sugimoto's model recalled in (B.6b).

In Appendix B, we show that the original model of Sugimoto [43] can be recovered from the new model (1). Note also that (1) can be easily extended to the case of resonators not periodically placed; only the values of x_i need to be changed.

3. First-order system

In this part, Eq. (1) is formulated as a first-order system, which enables us to determine an energy balance and to build a numerical scheme.

3.1. Diffusive approximation

The fractional derivatives in (1) are nonlocal in time and they rely on the full history of the solution, which is numerically memory-consuming. An alternative approach is based on a diffusive representation of fractional derivatives, and then on its approximation. This method has already been presented in [40, 28] and we just recall it briefly. The half-order integral (10) of $w(t)$ is written

$$\frac{\partial^{-1/2}}{\partial t^{-1/2}} w(t) \simeq \sum_{\ell=1}^N \mu_{\ell} \varphi_{\ell}(t), \quad (26)$$

where the diffusive variables $\varphi_{\ell}(t) = \varphi(t, \theta_{\ell})$ satisfy the ODE

$$\begin{cases} \frac{\partial \varphi_{\ell}}{\partial t} = -\theta_{\ell}^2 \varphi_{\ell} + \frac{2}{\pi} w, \\ \varphi_{\ell}(0) = 0. \end{cases} \quad (27)$$

The approximation (26) follows from the approximation of an integral thanks to a quadrature formula on N points, with weights μ_{ℓ} and nodes θ_{ℓ} , which are issued from an optimization process.

To get fractional derivatives of orders 1/2 and 3/2, we differentiate (26) in terms of t . Then we deduce:

$$\frac{\partial^{1/2} w}{\partial t^{1/2}} = \frac{\partial}{\partial t} \frac{\partial^{-1/2} w}{\partial t^{-1/2}} \simeq \sum_{\ell=1}^N \mu_{\ell} \frac{\partial \varphi_{\ell}}{\partial t}(t) = \mu_{\ell} \left(-\theta_{\ell}^2 \varphi_{\ell} + \frac{2}{\pi} w \right). \quad (28)$$

Similarly, the derivative of order 3/2 is written

$$\frac{\partial^{3/2} w}{\partial t^{3/2}} = \frac{\partial}{\partial t} \frac{\partial^{1/2} w}{\partial t^{1/2}} \simeq \sum_{\ell=1}^N \mu_{\ell} \frac{\partial \xi_{\ell}}{\partial t}(t), \quad (29)$$

where we have introduced $\xi_{\ell} = \partial \varphi_{\ell} / \partial t$. The diffusive variable $\xi_{\ell}(t)$ satisfies the following ODE (derivative of (27)):

$$\begin{cases} \frac{\partial \xi_{\ell}}{\partial t} = -\theta_{\ell}^2 \xi_{\ell} + \frac{2}{\pi} \frac{\partial w}{\partial t}, \\ \xi_{\ell}(0) = 0. \end{cases} \quad (30)$$

The initial condition is obtained using $w(0) = 0$, since we consider causal data. Thanks to these diffusive approximations, Eq. (1) can be written as

the following system

$$\left\{ \begin{aligned} & \frac{\partial u^\pm}{\partial t} + \frac{\partial}{\partial x} \left(\pm a_0 u^\pm + b \frac{(u^\pm)^2}{2} \right) \\ & = -\frac{c}{a_0} \sum_{\ell=1}^N \mu_\ell \left(-\theta_\ell^2 \varphi_\ell^\pm + \frac{2}{\pi} u^\pm \right) + d \frac{\partial^2 u^\pm}{\partial x^2} \mp e(1-2mp)q, \end{aligned} \right. \quad (31a)$$

$$\left\{ \begin{aligned} & \frac{\partial p}{\partial t} = q, \end{aligned} \right. \quad (31b)$$

$$\left\{ \begin{aligned} & \frac{\partial q}{\partial t} = h(u^+ - u^-) - gp - f \sum_{\ell=1}^N \mu_\ell \left(-\theta_\ell^2 \xi_\ell + \frac{2}{\pi} q \right) + m \frac{\partial^2 p^2}{\partial t^2} - n |q| q, \end{aligned} \right. \quad (31c)$$

$$\left\{ \begin{aligned} & \frac{\partial \varphi_\ell^\pm}{\partial t} = -\theta_\ell^2 \varphi_\ell^\pm + \frac{2}{\pi} u^\pm, \quad \ell = 1 \dots N, \end{aligned} \right. \quad (31d)$$

$$\left\{ \begin{aligned} & \frac{\partial \xi_\ell}{\partial t} = -\theta_\ell^2 \xi_\ell + \frac{2}{\pi} q, \quad \ell = 1 \dots N. \end{aligned} \right. \quad (31e)$$

Contrary to [28], all the initial conditions are null: $u^\pm = 0$, $p = 0$, $\frac{\partial p}{\partial t} = 0$. If this were not the case, then the diffusive representation of the 3/2 derivative would imply non-null initial conditions on ξ_ℓ in (30). The interested reader is referred to [30] for additional details on this topic.

3.2. Energy balance

The system (31) is suitable to define an energy and to prove the energy decreasing, in an infinite medium and for smooth solutions:

Result 1. *Let*

$$\mathcal{E} = \mathcal{E}_1^+ + \mathcal{E}_1^- + \mathcal{E}_2 \quad \text{and} \quad \mathcal{K} = \mathcal{K}_1^+ + \mathcal{K}_1^- + \mathcal{K}_2, \quad (32)$$

with

$$\mathcal{E}_1^\pm = \frac{1}{2} \int_{\mathbb{R}} \left((u^\pm)^2 + \frac{\pi}{2} \frac{c}{a_0} \sum_{\ell=1}^N \mu_\ell \theta_\ell^2 (\varphi_\ell^\pm)^2 \right) dx, \quad (33a)$$

$$\mathcal{E}_2 = \frac{1}{2} \int_{\mathbb{R}} \left(\frac{eg}{h} p^2 + \frac{e}{h} (1 - 2mp) q^2 + \frac{\pi}{2} \frac{ef}{h} \sum_{\ell=1}^N \mu_\ell \theta_\ell^2 \xi_\ell^2 \right) dx, \quad (33b)$$

$$\mathcal{K}_1^\pm = \frac{\pi}{2} \int_{\mathbb{R}} \frac{c}{a_0} \sum_{\ell=1}^N \mu_\ell \left(\frac{\partial \varphi_\ell^\pm}{\partial t} \right)^2 dx + \int_{\mathbb{R}} d \left(\frac{\partial u^\pm}{\partial x} \right)^2 dx, \quad (33c)$$

$$\mathcal{K}_2 = \int_{\mathbb{R}} \left(\frac{en}{h} q^2 \left(|q| - \frac{m}{n} q \right) + \frac{\pi}{2} \frac{ef}{h} \sum_{\ell=1}^N \mu_\ell \left(\frac{\partial \xi_\ell}{\partial t} \right)^2 dx \right). \quad (33d)$$

We neglect the $2mp$ terms in the tube, ie in the evolution equations of u^\pm in (1). Then the following energy balance holds:

$$\frac{d\mathcal{E}}{dt} = -\mathcal{K}. \quad (34)$$

The proof is reported in Appendix C. Four remarks are raised by (34).

- \mathcal{E}_1^\pm and \mathcal{K}_1^\pm involve quantities in the tube, notably the kinetic energy $(u^\pm)^2$; \mathcal{E}_2 and \mathcal{K}_2 involve quantities in the resonators, notably the potential energy with terms proportional to p^2 and q^2 .
- We have not succeeded in obtaining a proof by accounting for the $2mp$ term in the advection equations. Nevertheless, the hypothesis $2mp \simeq 0$ is consistent with Sugimoto's work, where only the influence of m in the resonators equation has been considered: see (B.6a). It is also consistent with the hypothesis of a weak nonlinear regime. Indeed, as shown in [40, 28]:

$$2mp \approx (\gamma - 1) \frac{u^+ - u^-}{a_0}, \quad (35)$$

which is lower than 1 under the hypothesis of weak nonlinearity $|u^\pm| \ll a_0$.

- The term \mathcal{E} in (32) is positive if $\mu_\ell > 0$ and $1 - 2mp > 0$. The first condition is imposed when the coefficients of the diffusive representation are determined during the optimisation process [40]. The second condition is satisfied in the weak nonlinear regime.

- The term \mathcal{K} in (32) is positive if $\mu_\ell > 0$ and $m < n$. The first condition has been already discussed. The second condition reads $m/n = \frac{\gamma-1}{2} \frac{BL_e}{V} < 1$, where BL_e is the resonator neck volume, and V is the volume of the resonators. For the experimental configuration under study, this ratio is lower than 1 and thus the condition is satisfied.

3.3. Numerical scheme

In this part, we present the numerical resolution of (31) with null initial conditions. Source terms $s^\pm(t)$ at x_{s^\pm} model the acoustic sources of right-going waves and left-going waves: $u^+(x_{s^+}, t) = s^+(t)$, $u^-(x_{s^-}, t) = s^-(t)$. For numerical purpose, it is necessary to write the evolution equations as a first-order system in time. To do so, the term $\partial^2 p^2 / \partial t^2$ in Eq. (31c) is expanded and leads to

$$(1 - 2mp) \frac{\partial q}{\partial t} = h(u^+ - u^-) - gp - f \sum_{\ell=1}^N \mu_\ell \left(-\theta_\ell^2 \xi_\ell + \frac{2}{\pi} q \right) + 2mq^2 - n|q|q.$$

The $(4 + 3N)$ unknowns for the counter-propagating waves are gathered in the vector

$$\mathbf{U} = (u^+, u^-, p, q, \varphi_1^+, \dots, \varphi_N^+, \varphi_1^-, \dots, \varphi_N^-, \xi_1, \dots, \xi_N)^T. \quad (36)$$

Then the nonlinear systems (31) is written in the form

$$\frac{\partial}{\partial t} \mathbf{U} + \frac{\partial}{\partial x} \mathbf{F}(\mathbf{U}) = \mathbf{G} \frac{\partial^2}{\partial x^2} \mathbf{U} + \mathbf{S}(\mathbf{U}), \quad (37)$$

where \mathbf{F} is the flux function

$$\mathbf{F} = \left(a_0 u^+ + b \frac{(u^+)^2}{2}, -a_0 u^- + b \frac{(u^-)^2}{2}, 0, 0, \dots, 0 \right)^T, \quad (38)$$

and where the source term \mathbf{S} is

$$\mathbf{S} = \begin{pmatrix} -\frac{c}{a_0} \sum_{\ell=1}^N \mu_\ell \left(-\theta_\ell^2 \varphi_\ell^+ + \frac{2}{\pi} u^+ \right) - e(1 - 2mp) q \\ -\frac{c}{a_0} \sum_{\ell=1}^N \mu_\ell \left(-\theta_\ell^2 \varphi_\ell^- + \frac{2}{\pi} u^- \right) + e(1 - 2mp) q \\ q \\ \frac{1}{1 - 2mp} \left(h(u^+ - u^-) - gp - f \sum_{\ell=1}^N \mu_\ell \left(-\theta_\ell^2 \xi_\ell + \frac{2}{\pi} q \right) + 2mq^2 - n|q|q \right) \\ -\theta_\ell^2 \varphi_\ell^+ + \frac{2}{\pi} u^+, \quad \ell = 1 \dots N \\ -\theta_\ell^2 \varphi_\ell^- + \frac{2}{\pi} u^-, \quad \ell = 1 \dots N \\ -\theta_\ell^2 \xi_\ell + \frac{2}{\pi} q, \quad \ell = 1 \dots N \end{pmatrix}. \quad (39)$$

As soon as $m \neq 0$ and $n \neq 0$, $\mathbf{S}(\mathbf{U})$ is no longer a linear operator ($m = 0 = n$ has been considered in [28]). The Jacobian matrix $\frac{\partial \mathbf{F}}{\partial \mathbf{U}}$ in (38) is diagonalizable with real eigenvalues: $a_0 + b u^+$, $-a_0 + b u^-$ and 0 with multiplicity $3N + 2$, which ensures propagation with finite velocity. These eigenvalues do not depend on the quadrature coefficients μ_ℓ and θ_ℓ . The diagonal matrix $\mathbf{G} = \text{diag}(d, d, 0, \dots, 0)$ incorporates the volume attenuation.

Let us describe briefly the numerical procedure; additional details can be found in [40, 28]. To compute the N quadrature coefficients μ_ℓ and θ_ℓ in (39), we use a nonlinear optimization with the positivity constraints $\mu_\ell \geq 0$ and $\theta_\ell \geq 0$ [40]. In order to integrate the system (37), a grid is introduced, with a uniform spatial mesh size Δx and a variable time step Δt_n . The computations are done with $N_x = 1000$ grid nodes. The approximation of the exact solution $\mathbf{U}(x_j = j \Delta x, t_n = t_{n-1} + \Delta t_n)$ is denoted by \mathbf{U}_j^n . A stability analysis [28] leads to the restriction on the time step

$$\beta = \frac{a_{\max}^{(n)} \Delta t_n}{\Delta x} \left(1 + \frac{1}{\text{Pe}} \right) \leq 1. \quad (40)$$

In the CFL condition (40), $\text{Pe} = \frac{a_{\max}^{(n)}}{2d} \Delta x \approx 10^5$ is the discrete Péclet

number, with the maximal velocity

$$a_{\max}^{(n)} = a_0 + b \max_j [\max(|u_j^{n+}|, |u_j^{n-}|)]. \quad (41)$$

In practice, we choose $\beta = 0.95$. To treat the system (37), a Strang splitting is used [48], ensuring both simplicity and efficiency: the original equation (31) is split in a propagative equation and a forcing equation, which are solved successively with adequate time increments. The propagative part is solved by a standard second-order TVD scheme (a finite-volume scheme with flux limiters) for nonlinear hyperbolic PDE [25] combined with a centered finite-difference approximation [28].

4. Results

γ	p_0 (Pa)	ρ_0 (kg/m ³)	Pr	ν (m ² /s)	μ_v/μ
1.403	10 ⁵	1.177	0.708	1.57 10 ⁻⁵	0.60
R (m)	D (m)	r (m)	L (m)	r_h (m)	H (m)
0.025	0.1	0.01	0.02	0.0215	0.02, 0.07 or 0.13

Table 1: Physical parameters of the air at 15 °C, and geometrical parameters of the tube with resonators.

4.1. Test 1: comparison with experiments

The first result is based on the experimental measurements detailed in [40]. The reader is referred to this paper for a complete description of the experimental and numerical setups. The physical and geometrical parameters are given in table 1. The explosion of a balloon at $x = 0$ generates a shock wave, which propagates along a tube of length 6.15 m. This wave interacts with resonators regularly spaced from $x = 0.2$ m up to the end of the tube. Two models are compared: the one-way model with constant coefficients (ie the original Sugimoto’s model used in [40]) and the two-way model with variable coefficients developed here. The computations are done on 5000 grid nodes. A preliminary numerical study has been performed to verify that this discretization is sufficiently fine to capture the converged solution, at the scale of the figures. The same remark holds for all the forthcoming tests.

Fig. 7 (a-b) compares the excess pressure p' , defined in Eq. (22), simulated by the models or measured experimentally. Two heights are considered:

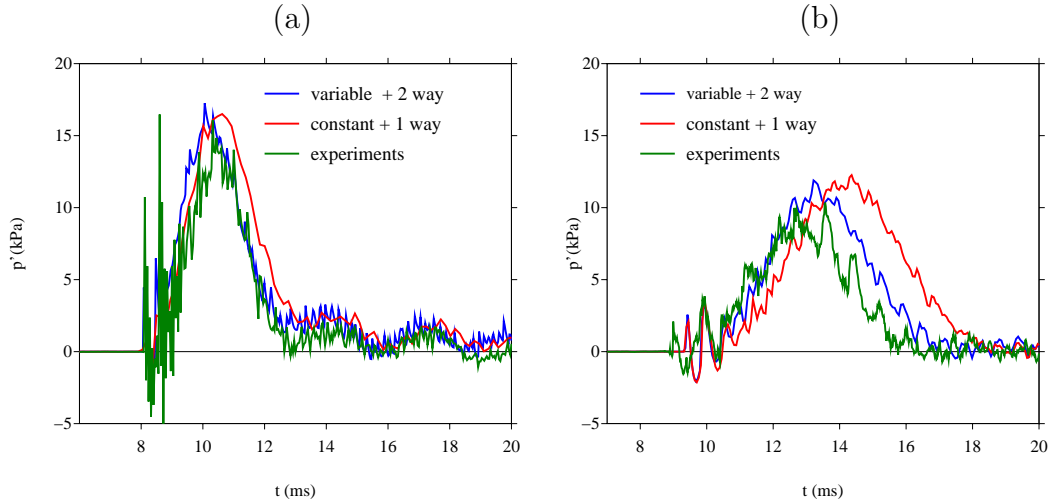


Figure 7: Test1. Time history of the excess pressure p' at $x_r = 2.8$ m. Comparison between the models and the experiments. (a): $H = 7$ cm; (b): $H = 13$ cm.

$H = 7$ cm (a) and $H = 13$ cm (b). The signal is measured at $x_r = 2.8$ m. For both models, a good agreement is observed between the simulated data and the experimental results. The best agreement is obtained with the new model, especially for larger resonators heights. It is observed that higher resonators yield smaller waves with a larger support. Moreover, the arrival time of the central peak is around 10 ms in (a) and 14 ms in (b), which indicates that higher resonators generate slower waves, as predicted by the theory [43].

4.2. Test 2: amplitude dependence of the velocity

From now on, we investigate the properties of the two-way model thanks to numerical experiments. As a second test, we consider the spatial domain $[0, 10]$ m, discretized on 5000 grid nodes with $N = 4$ memory variables. A time-variable punctual source at $x_s = 5$ m is used to generate right-going and left-going waves:

$$u^\pm(x_s, t) = A^\pm G(t), \quad (42)$$

where G is a causal Gaussian pulse with $G(0) = 0$ and with a central frequency $f_c = 650$ Hz. The amplitudes are $A^+ = 20$ m/s and $A^- = A^+/2 = 10$ m/s.

Figure 8(a,b) display snapshots of p' , defined in Eq. (22), at different times, for two resonators heights: $H = 0$ cm (a), and $H = 2$ cm (b). In

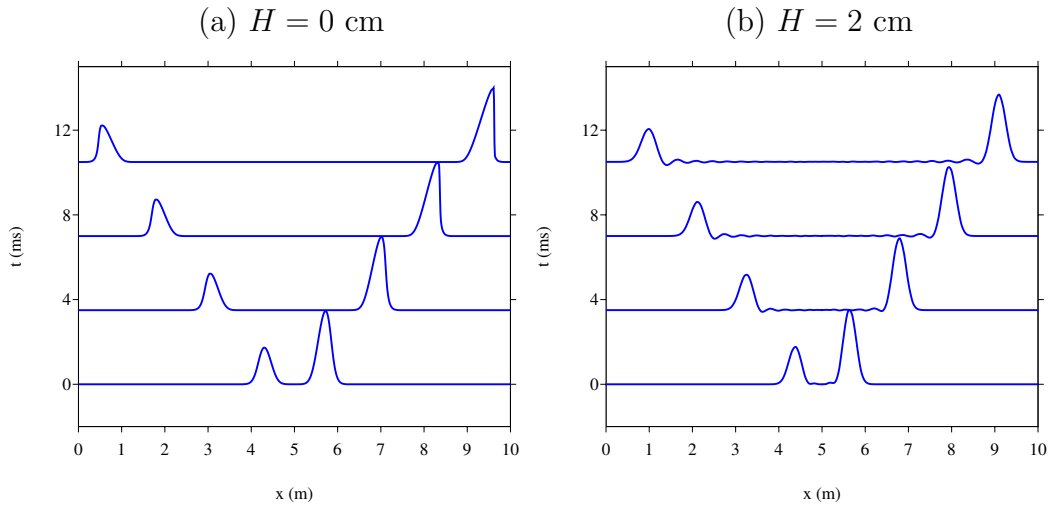


Figure 8: Test 2. Snapshots of the excess pressure p' generated by a source point at $x = 5$ m, at various instants. (a): $H = 0$ cm (no resonators); (b): $H = 2$ cm.

the first case without resonators, the viscothermal losses are insufficient to prevent the occurrence of shocks in finite time, as analysed theoretically in [42]. On the contrary, resonators create smooth waves (b).

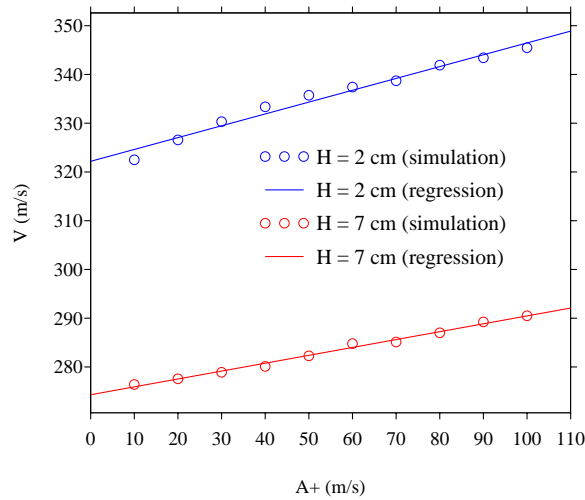


Figure 9: Test 2. Velocity of the nonlinear waves versus the forcing amplitude A^+ for different heights of the resonators.

From Figure 8, one estimates the velocity \mathcal{V} of the nonlinear waves. Figure 9 shows the results obtained by varying the amplitude A^+ of the forcing, from 10 m/s to 100 m/s, and for two heights H of the resonators. It is observed that \mathcal{V} increases linearly with A^+ , which is a typical signature of solitary waves. At a given forcing, \mathcal{V} is also greater for smaller height H , as in the first test of section 4.1.

4.3. Test 3: interaction with defects

In this test, the source of right-going waves is localized at the left edge of the computational domain ($x = -5$ m). The amplitude of the forcing is $A^+ = 20$ m/s; from now on, $A^- = 0$ m/s. The height of the resonators is $H = 2$ cm, except for the resonator at $x = 0$ m, where $H = 0.1$ cm. Figure 10 displays snapshot of p' at different times. The position of the defect is denoted by a vertical dotted line. At $t = 10$ ms, the incident wave has not yet crossed the defect (figure 10(a)) and exhibits a smooth shape already seen in the second test.

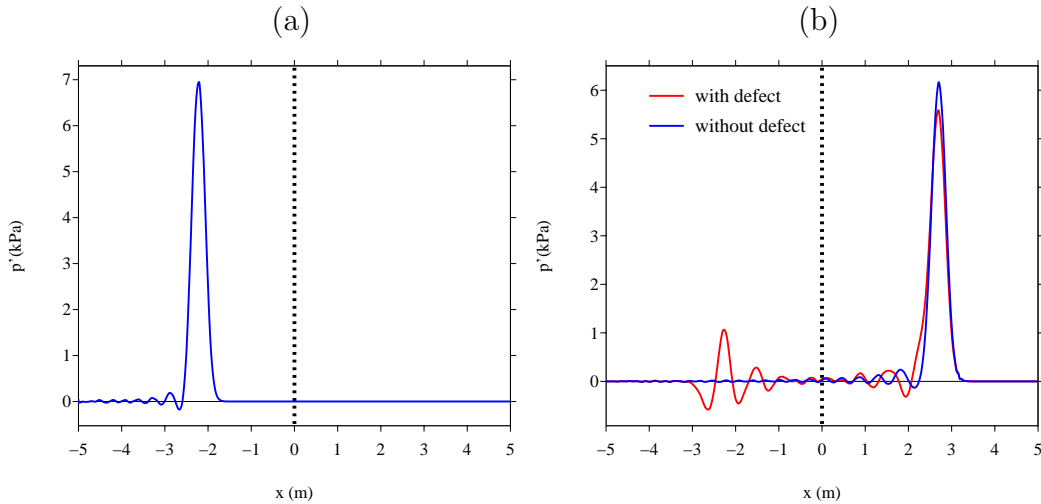


Figure 10: Test 3. Snapshots of p' at $t = 10$ ms (a) and $t = 25$ ms (b). All the resonators have the height $H = 2$ cm, except at $x = 0$ (vertical dotted line), where $H = 0.1$ cm.

Figure 10(b) shows p' at $t = 25$ ms, after the interaction with the defect. The amplitude of the transmitted wave (in red) has been slightly modified, compared to the perfect case without defect (in blue). More important, a left-going wave has been generated by the defect. This effect cannot be

predicted by the one-way model with constant coefficients, and it constitutes an original feature of the new model.

4.4. Test 4: propagation in a random medium

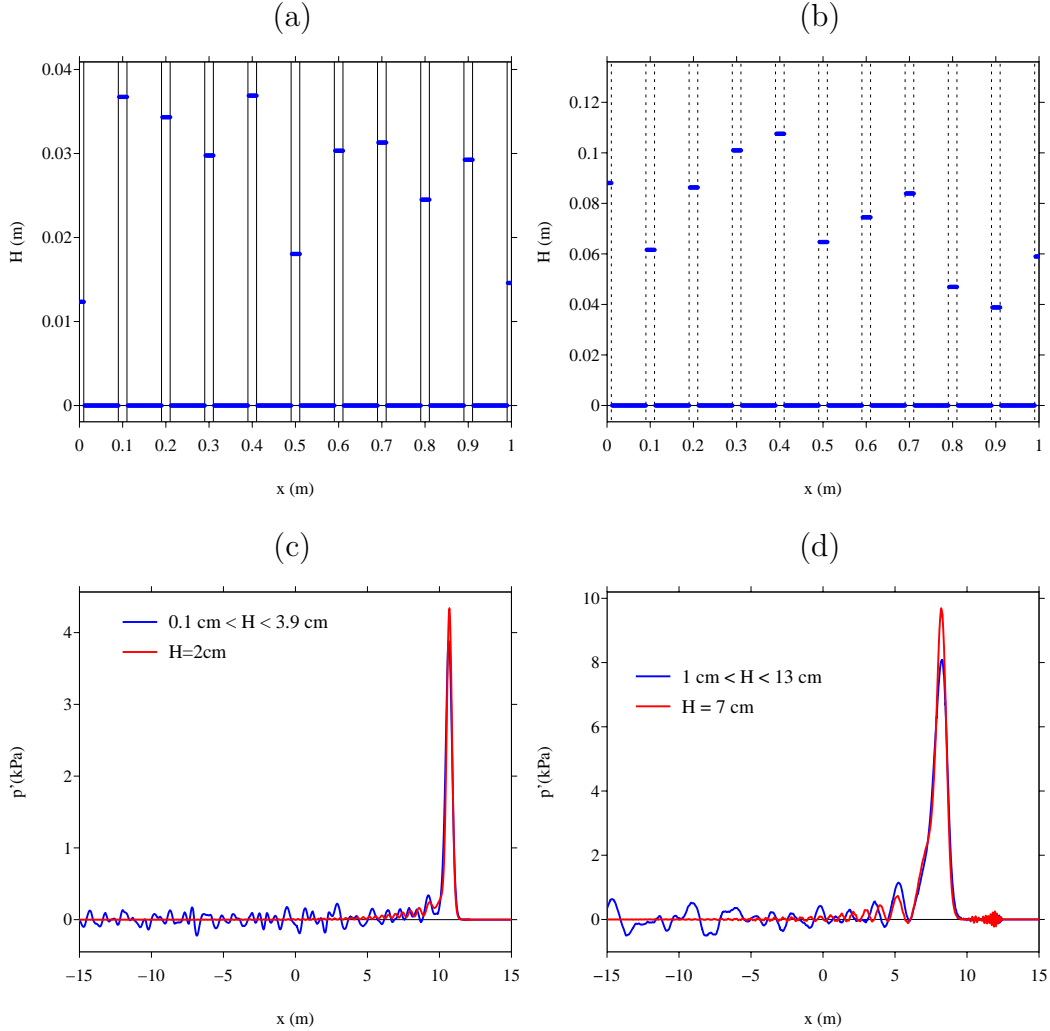


Figure 11: Test 4. Left: $\bar{H} = 2$ cm (a-c); right: $\bar{H} = 7$ cm (b-d). Top: discretizations of the random heights. The grid nodes are denoted by blue points; the vertical dotted lines denote the positions of the resonators. Bottom: snapshots of p' at $t = 80$ ms in the unperturbed medium (red) and in the random medium (blue).

As a fourth and last test, we examine the effect of a random disorder on the propagation of nonlinear waves. The domain $[-15, 15]$ m is discretized on

15000 grid nodes, ensuring 10 grid nodes inside each resonator. The random height of each resonator is uniformly distributed between H_{\min} and H_{\max} , which gives rise to random values of the coefficients e , g , n and h in (1). Figure 11 illustrates two configurations. The first configuration has a mean height $\bar{H} = 2$ cm, with $H_{\min} = 0.1$ cm and $H_{\max} = 3.9$ cm, and a forcing amplitude of right-going waves $A^+ = 20$ m/s (a,c). The second configuration has a mean height $\bar{H} = 7$ cm, with $H_{\min} = 1$ cm and $H_{\max} = 13$ cm, and a forcing amplitude $A^+ = 100$ m/s (b,d). A zoom between 0 and 1 m illustrates the values of H in 11 resonators (in blue), denoted by vertical solid lines (a,b).

Figure 11(c,d) shows a snapshot of p' at $t = 80$ ms without disorder (blue line) and with a random selection of H (red line). With randomness, a coda is observed behind the main wavefront. The amplitude and the location of the peak are only slightly modified, which indicates the robustness of the nonlinear wave when perturbed by some noise. It constitutes an additional signature of solitary waves.

5. Conclusion

The goal of this paper was to build a model describing the propagation of nonlinear wave across a variable lattice of Helmholtz resonators. Contrary to previous works [43, 46, 40], the new model takes into account the individual features of each resonator and the backscattering effects. Doing so has enabled us to study the effect of disorder or of an individual defect on the propagation of nonlinear waves.

The numerical experiments have highlighted various properties of the new model. First, the Helmholtz resonators prevent from the occurrence of shocks and yield large-amplitude smooth structures. Moreover, the velocity of waves increases linearly with the amplitude, which confirms the terminology of "acoustic solitary waves". These properties were already included in the original Sugimoto's model [43], but here a better agreement is obtained with experimental results. Second, diffraction effects have been displayed when a local variation of the height of the resonator is introduced in the lattice. Third and last, robustness to disorder has been observed by performing simulations in random lattices.

This work motivates new experimental investigations. The setup used in [40] enables to examine whether the effects seen in figures 10-11 are confirmed experimentally. New theoretical and numerical [51] developments to

study the propagation in a stochastic medium are also motivated, for instance concerning the robustness of acoustic solitary waves in random media [14]. Lastly, adequate choices of defects in the lattice could produce localized modes, generalizing the results presented in the linear case in [47].

Acknowledgement

The authors thank O. Richoux who gave access to his experimental measurements. Agnès Maurel is also greatly acknowledged for her support. We thank also the anonymous Reviewers for their constructive remarks.

Appendix A. Transformation of the fractional integral

Here we prove (19). To simplify, we restrict to a right-way propagation in (15), and we note $u = u^+$ and $p = p^+$:

$$\frac{\partial u}{\partial t} + \frac{\partial}{\partial x} \left(a_0 u + b \frac{u^2}{2} \right) - c \frac{\partial^{-1/2}}{\partial t^{-1/2}} \frac{\partial u}{\partial x} - d \frac{\partial^2 u}{\partial x^2} = -e(1 - 2mp) \frac{\partial p}{\partial t}. \quad (\text{A.1})$$

with the coefficients defined in (8) and (16). The first step is to write (A.1) in a dimensionless form. Given a central frequency f_0 , we define the characteristic wavelength $\lambda = a_0/f_0$. We introduce the non-dimensional quantities, indexed by a tilde: $x = \lambda \tilde{x}$, $t = \tilde{t}/f_0$, $u = u_0 \tilde{u}$ and $p = p_0 \tilde{p}$, where u_0 is the characteristic velocity, that will be determined later. We get:

$$\frac{\partial \tilde{u}}{\partial \tilde{t}} + \frac{\partial}{\partial \tilde{x}} \left(\tilde{u} + \tilde{b} \frac{\tilde{u}^2}{2} \right) - \tilde{c} \frac{\partial^{-1/2}}{\partial \tilde{t}^{-1/2}} \frac{\partial \tilde{u}}{\partial \tilde{x}} - \tilde{d} \frac{\partial^2 \tilde{u}}{\partial \tilde{x}^2} = -\tilde{e}(1 - 2\tilde{m}\tilde{p}) \frac{\partial \tilde{p}}{\partial \tilde{t}}, \quad (\text{A.2})$$

with

$$\tilde{b} = Mb = M \frac{\gamma + 1}{2}, \quad \tilde{c} = \frac{c}{a_0} \sqrt{\frac{\lambda}{a_0}}, \quad \tilde{d} = \frac{d}{a_0 \lambda}, \quad \tilde{e} = \frac{ep_0}{u_0} = \frac{V}{2AD\gamma M}, \quad \tilde{m} = mp_0 = \frac{\gamma - 1}{2\gamma}. \quad (\text{A.3})$$

$M = u_0/c_0$ is the characteristic Mach number. The typical value of M is obtained by equalizing \tilde{b} and \tilde{e} :

$$\tilde{b} = \tilde{e} \Leftrightarrow M = \sqrt{\frac{V}{AD\gamma(\gamma + 1)}}. \quad (\text{A.4})$$

To find an approximation of (A.2), we introduce the small parameter $\varepsilon = \max(\tilde{b}, \tilde{c}, \tilde{d}, \tilde{e})$. Then we define new quantities, defined with hats, by the relation $v = \varepsilon \hat{v}$, with $v = b, c, d$ or e , such that all the quantities with a hat are at most equal to one. Then, starting from (A.2), we get:

$$\begin{aligned}
\frac{\partial \tilde{u}}{\partial \tilde{x}} &= -\frac{\partial \tilde{u}}{\partial \tilde{t}} - \varepsilon \hat{b} \tilde{u} \frac{\partial \tilde{u}}{\partial \tilde{x}} + \varepsilon \hat{d} \frac{\partial^2 \tilde{u}}{\partial \tilde{x}^2} - \varepsilon \hat{e} (1 - 2\tilde{m}\tilde{p}) \frac{\partial \tilde{p}}{\partial \tilde{t}} + \varepsilon \hat{c} \frac{\partial^{-1/2}}{\partial \tilde{t}^{-1/2}} \frac{\partial \tilde{u}}{\partial \tilde{x}}, \\
&= -\frac{\partial \tilde{u}}{\partial \tilde{t}} - \varepsilon \hat{b} \tilde{u} \frac{\partial \tilde{u}}{\partial \tilde{x}} + \varepsilon \hat{d} \frac{\partial^2 \tilde{u}}{\partial \tilde{x}^2} - \varepsilon \hat{e} (1 - 2\tilde{m}\tilde{p}) \frac{\partial \tilde{p}}{\partial \tilde{t}} \\
&+ \varepsilon \hat{c} \frac{\partial^{-1/2}}{\partial \tilde{t}^{-1/2}} \left(-\frac{\partial \tilde{u}}{\partial \tilde{t}} - \varepsilon \hat{b} \tilde{u} \frac{\partial \tilde{u}}{\partial \tilde{x}} + \varepsilon \hat{d} \frac{\partial^2 \tilde{u}}{\partial \tilde{x}^2} - \varepsilon \hat{e} (1 - 2\tilde{m}\tilde{p}) \frac{\partial \tilde{p}}{\partial \tilde{t}} + \varepsilon \hat{c} \frac{\partial^{-1/2}}{\partial \tilde{t}^{-1/2}} \frac{\partial \tilde{u}}{\partial \tilde{x}} \right), \\
&= -\frac{\partial \tilde{u}}{\partial \tilde{t}} - \varepsilon \hat{b} \tilde{u} \frac{\partial \tilde{u}}{\partial \tilde{x}} + \varepsilon \hat{d} \frac{\partial^2 \tilde{u}}{\partial \tilde{x}^2} - \varepsilon \hat{e} (1 - 2\tilde{m}\tilde{p}) \frac{\partial \tilde{p}}{\partial \tilde{t}} - \varepsilon \hat{c} \frac{\partial^{1/2} \tilde{u}}{\partial \tilde{t}^{1/2}} + O(\varepsilon^2),
\end{aligned}$$

where we have used

$$\frac{\partial^{1/2} \tilde{u}}{\partial \tilde{t}^{1/2}} = \frac{\partial^{-1/2}}{\partial \tilde{t}^{-1/2}} \frac{\partial \tilde{u}}{\partial \tilde{t}}.$$

Therefore (A.2) can be approximated by:

$$\frac{\partial \tilde{u}}{\partial \tilde{t}} + \frac{\partial}{\partial \tilde{x}} \left(\tilde{u} + \tilde{b} \frac{\tilde{u}^2}{2} \right) - \tilde{c} \frac{\partial^{1/2} \tilde{u}}{\partial \tilde{t}^{1/2}} - \tilde{d} \frac{\partial^2 \tilde{u}}{\partial \tilde{x}^2} = -\tilde{e} (1 - 2\tilde{m}\tilde{p}) \frac{\partial \tilde{p}}{\partial \tilde{t}}, \quad (\text{A.5})$$

where neglected terms are small, of order ε^2 . Using the values of Table 1, $M = 0.21$ is obtained from (A.4), in agreement with the experiments made in [40], for $f_0 = 500$ Hz. From this Mach value, we deduce finally

$$\tilde{b} = 0.22 = \tilde{e}, \quad \tilde{c} = 0.010, \quad \tilde{d} = 8.2410^{-8}, \quad \tilde{m} = 0.14. \quad (\text{A.6})$$

Coming back to real quantities yields the first two equations in (1).

Appendix B. Comparison with Sugimoto's model

Here we prove that the original model of Sugimoto [43] can be recovered from the new model (1). In this aim, we introduce three ingredients:

- a restriction to only one-way propagations: for right-going waves ($u^- = 0$), we note p^+ the associated pressure p . Similarly, for left-going waves ($u^+ = 0$), we note p^- the pressure p ;

- in the tube, the coefficient of adiabatic nonlinearity $2mp$ is neglected;
- an averaged description of the geometry is used: for identical resonators of volume V , a continuous approximation of the tube geometry is introduced and a mean value of the flux is used:

$$\bar{F}^\pm = \frac{1}{D} \int_{x=0}^D F^\pm(x) dx. \quad (\text{B.1})$$

Using (13) and (14), one deduces the mean value

$$\bar{e} = \frac{1}{D} \int_{x=0}^D e(x) dx = e_0 \frac{B}{2D} = \frac{V}{2\rho_0 a_0 A D}. \quad (\text{B.2})$$

Also, thanks to the approximation for $R \gg r$:

$$\arcsin\left(\frac{\sqrt{r^2 - x^2}}{R}\right) \simeq \frac{\sqrt{r^2 - x^2}}{R}. \quad (\text{B.3})$$

Using (13) and (14), we obtain the mean value

$$\bar{c} = \frac{1}{D} \int_{x=0}^D c(x) dx = c_0 \left(1 - \frac{r^2}{2RD}\right) = C a_0 \sqrt{\nu} \left(\frac{1}{R} - \frac{B}{2AD}\right) = C a_0 \sqrt{\nu} \frac{1}{R^*}, \quad (\text{B.4})$$

with

$$\frac{1}{R^*} = \frac{1}{R} - \frac{B}{2AD}. \quad (\text{B.5})$$

Using these two ingredients, the system (1) degenerates in two families of uncoupled equations:

$$\left\{ \begin{array}{l} \frac{\partial u^\pm}{\partial t} + \frac{\partial}{\partial x} \left(\pm a_0 u^\pm + b \frac{(u^\pm)^2}{2} \right) \mp \bar{c} \frac{\partial^{-1/2}}{\partial t^{-1/2}} \frac{\partial u^\pm}{\partial x} - d \frac{\partial^2 u^\pm}{\partial x^2} = \mp \bar{e} \frac{\partial p^\pm}{\partial t} \quad (\text{B.6a}) \\ \frac{\partial^2 p^\pm}{\partial t^2} + f \frac{\partial^{3/2} p^\pm}{\partial t^{3/2}} + g p^\pm - m \frac{\partial^2 (p^\pm)^2}{\partial t^2} + n \left| \frac{\partial p^\pm}{\partial t} \right| \frac{\partial p^\pm}{\partial t} = \pm h u^\pm, \quad (\text{B.6b}) \end{array} \right.$$

which corresponds to the model proposed in [43, 46] and studied in [40].

Appendix C. Energy balance

Here we prove the result 1. The first step is to rewrite the system (31), eliminating the term $2m|p| \ll 1$ in (31a) and using (30), to get the following system:

$$\left\{ \begin{array}{l} \frac{\partial u^\pm}{\partial t} + \frac{\partial}{\partial x} \left(\pm a u^\pm + b \frac{(u^\pm)^2}{2} \right) = -\frac{c}{a_0} \sum_{\ell=1}^N \mu_\ell \frac{\partial \varphi_\ell^\pm}{\partial t} + d \frac{\partial^2 u^\pm}{\partial x^2} \mp e q \end{array} \right. \quad (\text{C.1a})$$

$$\frac{\partial p}{\partial t} = q, \quad (\text{C.1b})$$

$$\left\{ \begin{array}{l} \frac{\partial q}{\partial t} = h(u^+ - u^-) - gp - f \sum_{\ell=1}^N \mu_\ell \frac{\partial \xi_\ell}{\partial t} + m \frac{\partial^2 p^2}{\partial t^2} - n |q| q, \end{array} \right. \quad (\text{C.1c})$$

$$\frac{\partial \varphi_\ell^\pm}{\partial t} = -\theta_\ell^2 \varphi_\ell^\pm + \frac{2}{\pi} u^\pm, \quad \ell = 1, \dots, N, \quad (\text{C.1d})$$

$$\left\{ \begin{array}{l} \frac{\partial \xi_\ell}{\partial t} = -\theta_\ell^2 \xi_\ell + \frac{2}{\pi} q, \quad \ell = 1, \dots, N. \end{array} \right. \quad (\text{C.1e})$$

From (C.1d) and (C.1e), it follows

$$u^\pm = \frac{\pi}{2} \left(\frac{\partial \varphi_\ell^\pm}{\partial t} + \theta_\ell^2 \varphi_\ell^\pm \right), \quad q = \frac{\pi}{2} \left(\frac{\partial \xi_\ell}{\partial t} + \theta_\ell^2 \xi_\ell \right). \quad (\text{C.2})$$

In (C.1c), the derivative of p^2 is modified, using

$$\frac{\partial^2}{\partial t^2} (p^2) q = \frac{\partial}{\partial t} (p q^2) + q^3. \quad (\text{C.3})$$

This relation is easy to check by expanding both sides of the equality. Next we multiply (C.1c) by q , and using (C.1b), (C.2) and (C.3) leads to

$$\begin{aligned} q \frac{\partial q}{\partial t} &= h(u^+ - u^-) q - gpq - f \sum_{\ell=1}^N \mu_\ell \frac{\partial \xi_\ell}{\partial t} q + m \frac{\partial^2 p^2}{\partial t^2} q - n |q| q^2, \\ &= h(u^+ - u^-) q - gp \frac{\partial p}{\partial t} - \frac{\pi}{2} f \sum_{\ell=1}^N \mu_\ell \left(\frac{\partial \xi_\ell}{\partial t} + \theta_\ell^2 \xi_\ell \right) \frac{\partial \xi_\ell}{\partial t} + m \frac{\partial}{\partial t} (p q^2) \\ &\quad - n q^2 \left(|q| - \frac{m}{n} q \right). \end{aligned} \quad (\text{C.4})$$

Therefore, we get

$$\begin{aligned}
(u^+ - u^-)q &= \frac{1}{2} \frac{\partial}{\partial t} \left(\frac{g}{h} p^2 + \frac{1}{h} (1 - 2mp) q^2 + \frac{\pi f}{2h} \sum_{\ell=1}^N \mu_\ell \theta_\ell^2 \xi_\ell^2 \right) \\
&\quad + \frac{\pi f}{2h} \sum_{\ell=1}^N \mu_\ell \left(\frac{\partial \xi_\ell}{\partial t} \right)^2 + \frac{n}{h} q^2 \left(|q| - \frac{m}{n} q \right).
\end{aligned} \tag{C.5}$$

Besides, (C.1a) is multiplied by u^\pm and integrated in space. After summation and integration by parts (the data are compactly supported), we get

$$\begin{aligned}
\int_{\mathbb{R}} \left(u^+ \frac{\partial u^+}{\partial t} + u^- \frac{\partial u^-}{\partial t} \right) dx &= - \int_{\mathbb{R}} \frac{c}{a_0} \sum_{\ell=1}^N \mu_\ell \left(u^+ \frac{\partial \varphi_\ell^+}{\partial t} + u^- \frac{\partial \varphi_\ell^-}{\partial t} \right) dx \\
&\quad - \int_{\mathbb{R}} d \left(\left(\frac{\partial u^+}{\partial x} \right)^2 + \left(\frac{\partial u^-}{\partial x} \right)^2 \right) dx - \int_{\mathbb{R}} e (u^+ - u^-) q dx.
\end{aligned} \tag{C.6}$$

Thanks to the relations (C.2) and (C.5), the previous equation is simplified and the conclusion follows.

- [1] M. de Billy, A. C. Hladky-Hennion, *On the formation of envelope solitons with tube ended by spherical beads*, Ultrasonics, **52** (2012), 851-860.
- [2] M. de Billy, A. C. Hladky-Hennion, *Generation of transversal envelope soliton in polymeric and wooden rods*, Ultrasonics, **54** (2014), 1281-1288.
- [3] N. Boechler, G. Theocharis, S. Job, P. G. Kevrekidis, M. A. Porter, C. Daraio, *Discrete breathers in one-dimensional diatomic granular crystals*, Phys. Rev. Lett., **104**(24) (2010), 244302.
- [4] A. Chaigne, J. Kergomard, *Acoustics of Musical Instruments*, Springer-Verlag (2016).
- [5] W. Chester, *Resonant oscillations in closed tubes*, J. Fluid Mech., **18** (1964), 44-64.
- [6] A. P. Chetverikov, W. Ebeling, M. G. Velarde, *Localized nonlinear, soliton-like waves in two-dimensional anharmonic lattices*, Wave Motion, **48** (2011), 753-760.

- [7] H. H. Dai, Y. Huo, *Solitary waves in an inhomogeneous rod composed of a general hyper elastic material*, Wave Motion, **35** (2002), 55-69.
- [8] C. Daraio, V. F. Nesterenko, E. B. Herbold, S. Jin, *Tunability of solitary wave properties in one-dimensional strongly nonlinear phononic crystals*, Phys. Rev. E, **73**(2) (2006), 026610.
- [9] T. Dauxois, M. Peyrard, *Physics of Solitons*, Cambridge University Press (2006).
- [10] K. Diethelm, *An investigation of some nonclassical methods for the numerical approximation of Caputo-type fractional derivatives*, Numer. Algor., **47** (2008), 361-390.
- [11] J. Engelbrecht, V. Fridman, E. Pelinovski, *Nonlinear Evolution Equations*, Longman, Harlow (1988).
- [12] J. Engelbrecht, A. Berezovski, A. Salupere, *Nonlinear deformation waves in solids and dispersion*, Wave Motion, **44** (2007), 493-500.
- [13] B. F. Feng, T. Kawahara, *Discrete breathers in two-dimensional nonlinear lattices*, Wave Motion, **45**(2) (2007), 68-82.
- [14] J. P. Fouque, J. Garnier, G. Papanicolaou and K. Solna, *Wave propagation and time reversal in randomly layered media*, **56**, Springer Science and Business Media (2007).
- [15] M. Grabowski, P. Hawrylak, *Wave propagation in a nonlinear periodic medium*, Phys. Rev. B, **41**(9) (1990), 5783-5791.
- [16] M. F. HAMILTON, D. T. BLACKSTOCK, *Nonlinear Acoustics*, Academic Press (1998).
- [17] H. Y. Hao, H. J. Maris, *Experiments with acoustic solitons in crystalline solids*, Phys. Rev. B, **64**(6) (2001), 064302.
- [18] P. Hess, A.M. Lomonosov, *Solitary surface acoustic waves and bulk solitons in nanosecond and picosecond laser ultrasonics*, Ultrasonics, **50** (2010), 167-171.
- [19] Y. V. Kartashov, B. A. Malomed, L. Torner, *Solitons in Nonlinear Lattices*, Rev. Mod. Phys., **83**(1) (2011), 247-305.

- [20] P. G. Kevrekidis, *Nonlinear waves in lattices: past, present, future*, IMA J. Appl. Math., **76**(3) (2011), 389-423.
- [21] K. R. Khusnutdinova, A. M. Samsonov, *Fission of longitudinal strain solitary wave in a delaminated bar*, Phys. Rev. E, **77**(6) (2008), 06603.
- [22] A. S Kovalev, A. P. Mayer, C. Eckl, G. A. Maugin, *Solitary Rayleigh waves in the presence of surface nonlinearities*, Phys. Rev. E, **66**(3) (2002), 036615.
- [23] S. V. Kuznetsov, *Soliton-like lamb waves*, J. Appl. Math. Mech., **73** (2009), 71-76.
- [24] N. Lazarides, M. Eleftheriou, G. P. Tsironis, *Discrete breathers in nonlinear magnetic metamaterials*, Phys. Rev. Lett., **97**(15) (2006), 157406.
- [25] R. J. LeVeque, *Numerical methods for conservation laws*, 2nd Edition, Birkhäuser-Verlag (1992).
- [26] Q. Li, C. M. Soukoulis, S. Pnevmatikos, E. N. Economou, *Scattering properties of solitons in nonlinear disordered chains*, Phys. Rev. B, **38**(16) (1988), 11888-11891.
- [27] Q. Li, C. T. Chan, K. M. Ho, C. M. Soukoulis, *Wave propagation in nonlinear photonic band-gap materials*, Phys. Rev. B, **53**(23) (1996), 1577-1585.
- [28] B. Lombard, J. F. Mercier, *Numerical modeling of nonlinear acoustic waves in a tube connected with Helmholtz resonators*, J. Comput. Phys., **259** (2014), 421-443.
- [29] B. Lombard, J.F. Mercier, O. Richoux, *Numerical investigation of acoustical solitons*, Proceedings of the Estonian Academy of Sciences, **64**(3) 304-310 (2015).
- [30] B. Lombard, D. Matignon, *Diffusive approximation of a time-fractional Burgers equation in nonlinear acoustics*, SIAM J. Appl. Math., 76-5 (2016), 1765-1791.
- [31] A. M. Lomonosov, P. Hess, *Nonlinear surface acoustic waves: Realization of solitary pulses and fracture*, Ultrasonics, **48** (2008), 482-487.

- [32] D. Matignon, *An introduction to fractional calculus*, Scaling, Fractals and Wavelets (Digital Signal and Image Processing Series), ISTE-Wiley, 2008.
- [33] A. P. Mayer, *Nonlinear surface acoustic waves: Theory*, Ultrasonics, **48** (2008), 478-481.
- [34] L. Menguy, J. Gilbert, *Weakly nonlinear gas oscillations in air-filled tubes; solutions and experiments*, Acta Acustica united with Acustica, **86**(5) (2000), 798-810.
- [35] M. Moleron, A. Leonard, C. Daraio, *Solitary waves in chain of repelling magnets*, J. Appl. Phys., **115** (2014), 184901.
- [36] P. Monkewitz, N. M. Nguyen-Vo, *The response of Helmholtz resonators to external excitation. Part 1. Single resonators*, J. Fluid Mech., **151** (1985), 477-497.
- [37] P. Monkewitz, *The response of Helmholtz resonators to external excitation. Part 2. Arrays of slit resonators*, J. Fluid Mech., **156** (1985), 151-166.
- [38] I. Podlubny, *Fractional Differential Equations*, Academic Press (1999).
- [39] M. Remoissenet, *Waves Called Solitons: Concepts and Experiments*, Springer-Verlag, New-York (1999).
- [40] O. Richoux, B. Lombard, J. F. Mercier, *Generation of acoustic solitary waves in a lattice of Helmholtz resonators*, Wave Motion, **56** (2015), 85-99.
- [41] J. S. Russell, *Report on Waves, Made to the Meetings of the British Association in 1842-1843*, Report of the British Association for the Advancement of Science, John Murray, London (1844).
- [42] N. Sugimoto, *Burgers equation with a fractional derivative; hereditary effects on nonlinear acoustic waves*, J. Fluid Mech., **225** (1991), 631-653.
- [43] N. Sugimoto, *Propagation of nonlinear acoustic waves in a tunnel with an array of Helmholtz resonators*, J. Fluid Mech., **244** (1992), 55-78.

- [44] N. Sugimoto, *Acoustic solitary waves in a tunnel with an array of Helmholtz resonators*, J. Acoust. Soc. Am., **99**(4) (1996), 1971-1976.
- [45] N. Sugimoto, M. Masuda, J. Ohno, D. Motoi, *Experimental demonstration of generation and propagation of acoustic solitary waves in an air-filled tube*, Phys. Rev. Lett., **83**(20) (1999), 4053-4056.
- [46] N. Sugimoto, M. Masuda, K. Yamashita, H. Horimoto, *Verification of acoustic solitary waves*, J. Fluid Mech., **504** (2004), 271-299.
- [47] N. Sugimoto, *Localized mode of sound in a waveguide with Helmholtz resonators*, J. Fluid Mech., **546** (2006), 89-111.
- [48] E. F. Toro, *Riemann Solvers and Numerical Methods for Fluid Dynamics. A Practical Introduction*, Springer-Verlag (1999).
- [49] Y. Wan, C. M. Soukoulis, *Wave transmission in one-dimensional nonlinear lattice: multi stability and noise*, Springer Proceedings in Physics: Disorder and Nonlinearity, **39**, Springer-Verlag, Berlin (1989).
- [50] Y. Wan, C. M. Soukoulis, *One-dimensional nonlinear Schrödinger equation: A nonlinear dynamical approach*, Phys. Rev. A, **41**(2) (1990), 800-809.
- [51] D. Xiu, D., *Numerical methods for stochastic computations: a spectral method approach*, Princeton University Press (2010).