



Empirical Mode Decomposition for Noninvasive Atrial Fibrillation Dominant Frequency Estimation

Antonio Hidalgo-Muñoz, Ana Maria Tome, Vicente Zarzoso

► To cite this version:

Antonio Hidalgo-Muñoz, Ana Maria Tome, Vicente Zarzoso. Empirical Mode Decomposition for Non-invasive Atrial Fibrillation Dominant Frequency Estimation. 23rd European Signal Processing Conference (EUSIPCO-2015), Aug 2015, Nice, France. pp.2581-2585, 10.1109/EUSIPCO.2015.7362851 . hal-01302680

HAL Id: hal-01302680

<https://hal.science/hal-01302680>

Submitted on 14 Apr 2016

HAL is a multi-disciplinary open access archive for the deposit and dissemination of scientific research documents, whether they are published or not. The documents may come from teaching and research institutions in France or abroad, or from public or private research centers.

L'archive ouverte pluridisciplinaire **HAL**, est destinée au dépôt et à la diffusion de documents scientifiques de niveau recherche, publiés ou non, émanant des établissements d'enseignement et de recherche français ou étrangers, des laboratoires publics ou privés.

EMPIRICAL MODE DECOMPOSITION FOR NONINVASIVE ATRIAL FIBRILLATION DOMINANT FREQUENCY ESTIMATION

Antonio R. Hidalgo-Muñoz¹, Ana M. Tomé² and Vicente Zarzoso¹

¹ I3S Laboratory, University of Nice Sophia Antipolis, CNRS, France

² DETI/ IEETA, University of Aveiro, Portugal

ABSTRACT

The dominant frequency (DF) of the atrial activity signal is arguably one of the most relevant features characterizing atrial fibrillation (AF), the most common cardiac arrhythmia. Its accurate estimation from noninvasive acquisition modalities such as the electrocardiogram (ECG) can avoid risks of potential complications to patients in a cost-effective manner. However, the approximation of the underlying intracardiac atrial activity by noninvasive techniques such as average beat subtraction or blind source separation has not always been satisfactory. In the present work, a new approach based on the ensemble empirical mode decomposition (EEMD) is proposed for AF DF estimation. Our results suggest that EEMD provides more accurate estimates of intracardiac AF DF than alternative noninvasive methods. In addition, the empirical nature of EEMD overcomes important drawbacks of other techniques, simplifying its implementation in automatic tools for diagnosis aid.

Index Terms— Atrial fibrillation, dominant frequency, electrocardiogram, empirical mode decomposition

1. INTRODUCTION

Atrial fibrillation (AF) is the most common sustained arrhythmia encountered in clinical practice, particularly in elderly people [9]. This cardiac disease consists in disorganized electrical wavefronts propagating across the atria, triggered by ectopic foci around the pulmonary veins, preventing a good synchronization between atrial pumping and ventricular activity. This dysfunction is reflected in the surface electrocardiogram (ECG) in the form of quasi-periodic sawtooth-like fibrillatory waves (f-waves), usually in the range of 3 to 9 Hz, instead of the P-wave preceding the QRST complex in normal sinus rhythm [9].

The estimation of the AF dominant frequency (DF) from the standard surface ECG remains a challenging problem, and it requires a preprocessing step typically based on average beat subtraction (ABS) [1] or blind source separation (BSS) [14] to cancel out the QRST

complex of ventricular activity. Several approaches aim at computing the AF DF from different standpoints to check the correlation between the surface manifestation of AF and intracardiac measurements [4, 7], but correlation results are perfectible. While modern computer aided diagnosis systems require efficient and simple tools to tackle the intrinsic variability of biomedical signals, few research works have actually managed to cope with the unavoidable difficulties of automatic AF DF computation.

The present study applies the ensemble empirical mode decomposition (EEMD) [13] to noninvasively extract atrial spectral information in patients suffering from AF. This technique is a noise-assisted variant of the empirical mode decomposition (EMD) [8], which uses empirical knowledge of oscillations intrinsic to a time series in order to represent them as a superposition of components with well-defined instantaneous frequencies. These approaches hint at promising signal processing techniques to deal with problems of a multi-scale nature as in cardiovascular electrophysiology based applications. Unlike other traditional decompositions such as the Fourier transform, the EMD is a data-driven technique that reflects in a natural way the characteristics of the signals under study without requiring a predetermined basis system, letting frequency as well as amplitude vary over time [8, 13].

EMD has been applied to analyze ECG signals for different purposes. Some applications of this technique mainly concern the artifact rejection stage of ECG preprocessing, either to eliminate high frequency noise artifacts or to reduce the low frequency contribution due to respiration [3]. EMD has also been employed as a feature extraction method to detect ventricular fibrillation [2]. A similar approach is carried out in [12] directly for QRS complex detection. Furthermore, an EMD block to extract spectral features from ECG has been included in a predictive model for determining paroxysmal AF termination [10]. However, the obtained surface DF estimates are not linked to intracardiac values in that study. On the other hand, the ensemble version currently begins to arouse interest for ECG analysis. For instance, EEMD is applied on ECG identification in [15].

This work analyzes the ability of EEMD to estimate the intracardiac AF DF from the surface ECG. The technique is compared to alternative methodologies for atrial activity analysis, such as ABS for QRST complex cancellation [1] and BSS based on independent component analysis (ICA) [14].

A. R. Hidalgo-Muñoz is partially funded by the University of Nice Sophia Antipolis. V. Zarzoso is a member of the *Institut Universitaire de France*.

2. DATABASE

2.1. Study population

Sixty-one consecutive patients (51 male, 61.5 ± 10.6 years) having persistent and long-lasting persistent AF [9] (AF history = 62.3 ± 56.3 months, current AF episode = 7.14 ± 11.1 months) were included in the study. All patients were treated at the Cardiology Department of Princess Grace Hospital, Monaco. The study was approved by the Institutional Committee on Human Research. According to institutional guidelines, all patients gave written informed consent.

2.2. Signal acquisition

One minute standard 12-lead ECG was acquired at a sampling rate of 977 Hz (Prucka Engineering, Inc., Houston, TX, USA). ECG signals were filtered by a 4th-order zero-phase bandpass type-II Chebyshev filter with a lower cutoff frequency of 0.5 Hz and an upper cutoff frequency of 40 Hz to remove baseline wander, power line and myoelectric interference as well as high frequency artifacts.

Simultaneously to the ECG, an atrial electrogram (EGM) was also acquired for each patient by placing a bipolar catheter within the left atrial appendage (left atrial diameter = 47.4 ± 6.92 mm).

3. SIGNAL PROCESSING

3.1. Ensemble empirical mode decomposition

The basic EMD is a heuristic unsupervised data decomposition technique, with no need for *a priori* defined basis system. This technique adaptively and locally decomposes any nonstationary time series as a sum of intrinsic mode functions (IMF), representing zero-mean amplitude and frequency modulated components [8]. Perfect reconstruction is assured by superimposing all extracted IMFs together with the residual trend. The empirical nature of EMD offers the advantage over other signal decomposition techniques of not being constrained by conditions that often can only be roughly assumed, especially in biological signals.

According to EMD, the original signal $x(t)$ can be expressed as

$$x(t) = \sum_{j=1}^J c^{(j)}(t) + r(t) \quad (1)$$

where $c^{(j)}(t)$ represents the j th IMF and $r(t)$ the remaining residual trend.

During sifting, mode mixing as well as boundary artifacts can be avoided by a variant called ensemble EMD (EEMD) [13]. This is a noise-assisted data analysis method consisting in adding white noise of finite amplitude to the raw data, and then applying the EMD algorithm. This procedure is repeated several times, and each IMF is finally calculated as an ensemble average of the corresponding

IMFs obtained over the noise realizations. With a growing ensemble number, the resultant IMF is expected to converge to the most accurate IMF. However, the ensemble factor will depend on the application goal and the most relevant frequency range under study. The added noise is treated as random noise that appears in the measurement. In this way, the EMD of the n th noisy observation will be

$$x_n(t) = x(t) + \epsilon_n(t) = \sum_{j=1}^J c_n^{(j)}(t) + r_n(t) \quad (2)$$

where $x(t)$ is the original signal (in our case, the ECG signal), $\epsilon_n(t)$ is the n th random noise realization and $c_n^{(j)}$ represents the j th IMF obtained for the n th noisy observation. Thus, the resultant IMF $c^{(j)}$ is computed by averaging the ensemble $c_n^{(j)}$, $n = 1, 2, \dots, E$.

Therefore, EEMD requires setting two parameters, besides J , namely the ensemble size E and a proper standard deviation $\sigma_{noise} = \gamma \sigma_{signal}$ of additive Gaussian noise, where σ_{signal} denotes the standard deviation of the original signal amplitude distribution. Usually, both parameters are chosen empirically [13].

In this study, $E = \{5, 10, 15\}$ and $\gamma = \{0.05, 0.1, 0.2\}$ were tested. These are usual values found in the literature [15]. All 10 s signal segments recorded in lead V1 were decomposed into $J = 8$ IMFs, a number high enough to cover the spectral range of interest.

3.2. Adaptive singular value cancellation

Adaptive singular value cancellation (ASVC) belongs to the family of ABS-based methods for cancelling ventricular activity from ECG signals to keep only the atrial activity [1]. The use of this particular technique is justified by the high degree of temporal redundancy present in the ECG.

Firstly, the algorithm detects the R-peaks and both the starting and ending points of every QRST complex. Then, all the QRST complexes are aligned on their R-peak locations and their eigenvector sequence is computed by means of singular value decomposition (SVD). In this way, the most representative ventricular activity can be obtained by the highest variance according to the eigenvalues and used as the cancelling template. Next, this template is adapted to the width and amplitude of every QRST occurrence, and temporally re-aligned with the R-peaks. Finally, each customized template is subtracted from its corresponding QRST complex. Thus, the atrial activity is preserved in these segments, where it was masked by the ventricular activity contribution.

This SVD-based algorithm provides a more accurate ventricular activity representation, better adapted to each individual QRST complex, than traditional ABS approaches, and a more reliable atrial activity extraction is consequently expected. This methodology has been widely used in the AF framework for f-wave analysis [1].

In this work, the ASVC-based analysis was applied on 20 s segments from lead V1, so that the number of beats

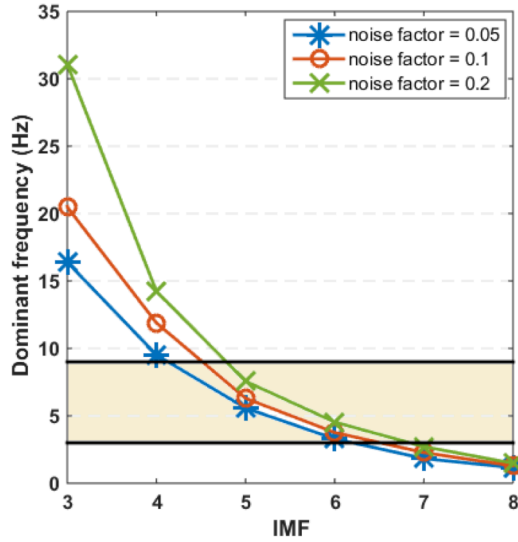


Fig. 1. Mean DF values for several IMFs computed in lead V1 over the AF patient database for different noise factors γ , with ensemble size $E = 5$. The horizontal solid lines mark the typical AF DF interval (3 to 9 Hz).

was sufficiently high to guarantee an accurate algorithm performance [1].

3.3. RobustICA-f

Another approach to noninvasive atrial activity extraction exploits the spatial diversity of the multi-lead ECG by means of BSS based on ICA. In this study, we employ the RobustICA-f algorithm proposed in [14], since it has been shown to compare favorably to other atrial signal extraction techniques [6]. RobustICA-f searches for directions of maximum independence within the space of data by relying on higher order statistics (kurtosis). By working in the frequency domain, this method simultaneously exploits the statistical independence between atrial and ventricular components and the narrowband character of the atrial activity signal.

In this study we applied RobustICA-f to 20 s segments of the 12-lead ECG. Out of the independent sources estimated by the algorithm, the one with the highest spectral concentration and DF in the range of 3 to 9 Hz was selected as the atrial source [14]. However, an accurate source selection required visual confirmation, since the above automatic criteria sometimes led to residual ventricular activity (T-wave components) overlapping in the frequency range of interest.

3.4. AF DF estimation

The surface AF DF was determined as the maximal peak frequency of Welch's power spectral density after applying one of the different noninvasive methods for atrial signal extraction described in the previous section.

Concerning invasive recordings, 20 s segments were preprocessed following the method proposed by Botteron and Smith [5] to overcome the drawbacks brought by the

sharp biphasic morphology of the atrial depolarization waves in bipolar EGMs, which makes Fourier analysis unsuitable for representing the depolarization rate of the atrial tissue. After this preprocessing step, the intracardiac AF DF was also determined as the maximal peak frequency of Welch's power spectral density.

4. RESULTS

4.1. Intrinsic mode function DF

To determine which IMFs present DF values belonging to the typical AF frequency range (between 3 and 9 Hz) [9], EEMDs were performed in lead V1 of every patient for different values of the noise factor γ . For a given value of γ , the DF of each IMF was averaged over the AF patient database. Results are depicted in Fig. 1. IMFs 1 and 2 are omitted from this plot as they correspond to noisy artifacts, whose frequency content has most probably no biological meaning. Results by EMD are also discarded due to its sensitivity to spurious artifacts.

According to the range of interest, IMFs number 5 and 6 are the modes that may represent the fibrillatory activity for any of the noise factors tested. However, $\gamma = 0.1$ was the selected value for subsequent analysis, since it yields the closest estimate of the mean intracardiac frequency in the case of IMF 5. Interestingly this noise factor value is also typically used in research works dealing with EEMD [15].

Table 1 shows the DF values as a function of the ensemble factor E . There are no relevant differences in the measurements for different ensemble factors. Hence, to reduce computational cost and simplify the interpretation, only the case with $E = 5$ and $\gamma = 0.1$ is considered in the sequel.

E	IMF 4 (Hz)	IMF 5 (Hz)	IMF 6 (Hz)
5	11.89	6.30	3.76
10	11.57	6.52	3.86
15	12.05	6.40	3.78

Table 1. Average DF values in lead V1 obtained for different values of the ensemble size E over the AF patient database, with noise factor $\gamma = 0.1$.

4.2. Accuracy of ECG AF DF estimates

Table 2 compiles the basic statistics of DF values computed by the different methods considered in this work, including the benchmark values from intracardiac EGM. To evaluate the accuracy of the approximation, the difference between surface ECG and intracardiac EGM AF DF estimations was computed. Table 3 shows the mean difference between DF value obtained by the three noninvasive approaches explained in Sec. 2 and the intracardiac DF value. Note that there is not statistically significant difference between the intracardiac DF values and the DF from IMF 5 after decomposition by means of EEMD. IMF 5 also presents the most favorable CI in the sense that zero is included within its range, whereas the rest of techniques

have a tendency to underestimate the EGM measures (negative mean difference and CI). Hence, IMF 5 approximates most accurately the intracardiac DF values among the noninvasive approaches considered.

AF DF measurement	Mean (Hz)	Std. Deviation
Intracardiac	6.12	0.92
RobustICA-f	5.41	1.34
ASVC	5.65	0.93
EEMD (IMF 5)	6.30	1.30
EEMD (IMF 6)	3.76	0.97

Table 2. DF mean and standard deviation values by different computation methods over the AF patient database. Ensemble size $E = 5$ and noise factor $\gamma = 0.1$ were used in the EEMD.

Method	Difference (Hz)	Difference CI (95%)	Sig.
RobustICA-f	-0.72	[-1.04, -0.40]	<0.001
ASVC	-0.47	[-0.74, -0.21]	0.001
EEMD (IMF 5)	0.19	[-0.17, 0.55]	0.291
EEMD (IMF 6)	-2.36	[-2.70, -2.01]	<0.001

Table 3. Mean differences and confidence intervals (CI) when comparing the intracardiac DF with the surface DF estimated by the methods of Table 2. Sig.: significance value after applying paired t-tests over the AF patient database to contrast intracardiac and noninvasively estimated DF values.

To check if there exist relevant spatial variations across the different lead locations for the EEMD method, Table 4 shows the accuracy values in terms of mean difference and CI for every lead. Of note that lead V1 presents the lowest difference that is not statistically different from zero.

Figure 2 shows an example of a raw ECG signal from an AF patient from our database and Fig. 3 shows the resultant IMF 5 from the same patient, whose DF estimation by means of EEMD was exact in comparison to the intracardiac DF value (5.10 Hz).

ECG lead	Difference (Hz)	Difference CI (95%)	Sig.
I	1.17	[0.70, 1.65]	<0.001
II	0.42	[0.01, 0.83]	0.044
III	0.66	[0.17, 1.16]	0.009
aVR	0.83	[0.37, 1.29]	0.001
aVL	0.68	[0.21, 1.14]	0.005
aVF	0.82	[0.38, 1.27]	<0.001
V1	0.19	[-0.17, 0.55]	0.291
V2	0.82	[0.36, 1.28]	<0.001
V3	1.25	[0.84, 1.66]	<0.001
V4	1.69	[1.26, 2.12]	<0.001
V5	1.63	[1.15, 2.11]	<0.001
V6	1.24	[0.79, 1.69]	<0.001

Table 4. Mean differences and confidence intervals (CI) when comparing the intracardiac DF with the estimated surface DF by means of EEMD (IMF 5) for every lead in the standard ECG.

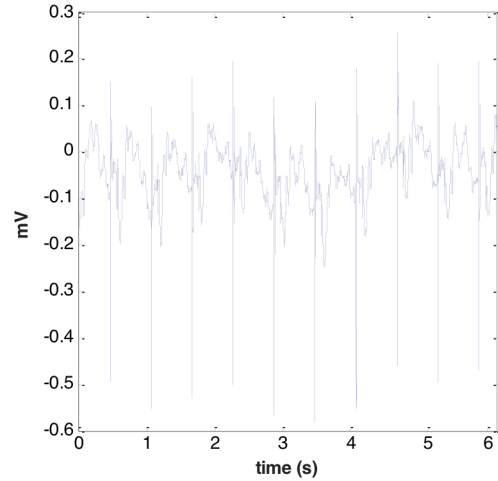


Fig. 2. A lead V1 signal from our AF ECG database.

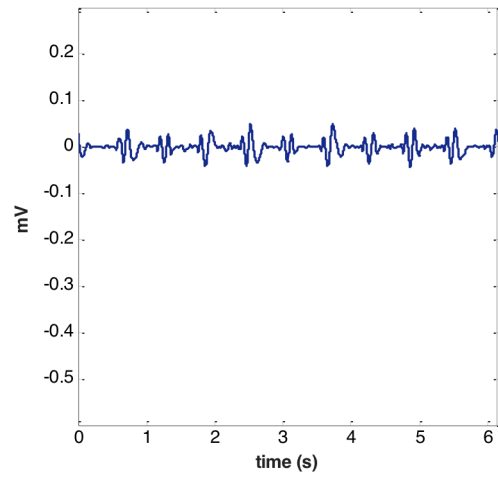


Fig. 3. IMF 5 obtained by EEMD with ensemble size $E = 5$ and noise factor $\gamma = 0.1$ on the ECG signal of Fig. 2.

5. DISCUSSION

In any clinical context, protocols to obtain physiological information about internal organs, such as the heart, from noninvasive measurements are highly desirable. In addition, reliable, powerful and easy to handle automatic signal processing techniques are also encouraged. Following this line, EEMD shows interesting advantages over other mathematical approaches to estimate noninvasively spectral features of intracardiac signals.

A preliminary analysis concluded that IMF 5 with ensemble factor $E = 5$ approximates well the AF DF (Fig. 1, Table 1) needing a small number of iterations of the EMD algorithm. Then, we focused on the mean difference and its associated CI between the true DF (considering the intracardiac recordings as benchmark) and the IMF DF. According to the results detailed in Tables 2 and 3, EEMD is the method that best approximates the intracardiac AF DF. This fact is reflected in the mean difference < 0.2 Hz and a short CI around zero, pointing to a narrow error

margin with a 95% of significance level, robust against outliers.

Even more relevant, the measurements obtained by means of EEMD show no statistically significant difference between groups, meaning that this technique neither overestimates nor underestimates the DF. Variability around the average DF values in the study population is relatively small (Table 2), but is in agreement with other studies on persistent forms of AF.

Techniques based on BSS for noninvasive atrial activity extraction need several ECG leads (sufficient spatial diversity) [6, 14], whereas EEMD can be applied on single leads. In addition, selecting the proper source linked to the atrial activity is not trivial. Although some criteria exist for choosing atrial sources (see Sec. 3.3), visual inspection was required in our analysis to check the selection of the most suitable source from RobustICA-f. Indeed, the method failed in 11 out of the 61 cases, due to the presence of several possible atrial sources, thus hampering the automatic processing. By contrast, EEMD does not suffer from the scaling and permutation indeterminacies typical of BSS techniques.

Furthermore, EEMD works properly without requiring QRST cancellation. Therefore, the mathematical complexity of the implementation is reduced and shorter time intervals can yield satisfactory performance, as shown in our experiments. Research works dealing with EMD and ECG are concerned with QRST amplitude distortion as a consequence of the decomposition [3, 15]. This is not a crucial issue for AF analysis, since we are just interested in atrial activity while ventricular activity is considered as an artifact. A residual T-wave contribution can be observed in Fig. 3, but these waves are modulated by a higher frequency component that cannot be derived from ventricular activity and seems to be linked to atrial activity. It should be remarked, however, that our goal is AF DF estimation and not atrial waveform recovery.

Showing the highest accuracy in Table 4, V1 is the lead that best represents the atrial activity and the consequent AF DF, in line with previous works pointing to this lead as the most suitable for AF analysis [11].

6. CONCLUSIONS

This work has applied the EMD approach to estimate the intracardiac DF from AF ECGs. The results have been compared to other noninvasive techniques such as BSS (RobustICA-f) and QRST complex cancellation (ASVC). In our AF patient database, EEMD outperforms the other techniques in terms of mean difference between the intracardiac AF DF, considered as ground truth, and its noninvasive computation from the surface ECG, and thus arises as the most accurate option to implement an automatic and efficient algorithm to extract spectral information for AF analysis. Future works should deepen the study of IMF properties to evaluate other atrial signal features characterizing AF, such as amplitude or spatiotemporal variability. The sample size robustness of EMD should also be assessed.

REFERENCES

- [1] R. Alcaraz, and J.J. Rieta, "Adaptive singular value cancellation of ventricular activity in single-lead atrial fibrillation electrocardiogram," *Physiological Measurement*, vol. 29, no. 12, pp. 1351-1369, 2008.
- [2] M.A. Arafat, J. Sied, and K. Hasan, "Detection of ventricular fibrillation using empirical mode decomposition and Bayes decision theory," *Computers in Biology and Medicine*, vol. 39, pp. 1051-1057, 2009.
- [3] M. Blasco-Velasco, B. Weng, and K.E. Barner, "ECG signal denoising and baseline wander correction based on the empirical mode decomposition," *Computers in Biology and Medicine*, vol. 38, pp. 1-13, 2008.
- [4] M. Bojarnejad, J.R. Blake, J. Bourke, E. Shepherd, A. Murray, and P. Langley, "Non-invasive estimation of left atrial dominant frequency in atrial fibrillation from different electrode sites: insight from body surface potential mapping," *J. Atrial Fibrillation*, vol. 7, no. 3, pp. 6-10, 2014.
- [5] G.W. Botteron, and J.M. Smith, "A technique for measurement of the extent of spatial organization of atrial activation during atrial fibrillation in the intact human heart," *IEEE Transactions on Biomedical Engineering*, vol. 42, no. 6, pp. 579-586, 1995.
- [6] M. Garibaldi and V. Zarzoso, "Algorithms for atrial signal extraction in atrial fibrillation ECGs: a comparison based on the correlation between endocardial and surface dominant frequency," In: *Proc. 7th International Workshop on Biosignal Interpretation*, Como, Italy, 2012.
- [7] N.W. Hsu, Y.J. Lin, C.T. Tai, et al., "Frequency analysis of the fibrillatory activity from surface ECG lead V1 and intracardiac recordings: implications for mapping of AF," *Europace*, vol. 10, no. 4, pp. 438-443, 2008.
- [8] N.E. Huang, Z. Shen, S.R. Long, M.C. Wu, H.H. Shih, Q. Zheng, N.C. Yen, C.C. Tung, and H.H. Liu, "The empirical mode decomposition and the Hilbert spectrum for nonlinear and non-stationary time series analysis," *Proc. Royal Society of London. Series A: Mathematical, Physical and Engineering Sciences*, vol. 454, no. 1971, pp. 903-995, 1998.
- [9] C.T., January, L.S. Wann, J.S. Alpert, M.E. Field, H. Calkins, K.T. Murray, J.C. Cleveland et al., "2014 AHA/ACC/HRS guideline for the management of patients with atrial fibrillation: executive summary," *J. American College Cardiol.*, vol. 64, no. 21, pp. 2246-2280, 2014.
- [10] M. Mohebbi, and H. Ghassemian, "Predicting termination of paroxysmal atrial fibrillation using empirical mode decomposition of the atrial activity and statistical features of the heart rate variability," *Medical and Biological Engineering and Computing*, vol. 52, pp. 415-427, 2014.
- [11] S. Petrutiu, J. Ng, G.M. Nijm, H. Al-Angari, S. Swiryn, and A.V. Sahakian, "Atrial fibrillation and waveform characterization," *IEEE Engineering in Medicine and Biology Magazine*, vol. 25, no. 6, pp. 24-30, 2006.
- [12] Z.E.H. Slimane, and A. Naït-Ali, "QRS complex detection using empirical mode decomposition," *Digital Signal Processing*, vol. 20, pp. 1221-1228, 2010.
- [13] Z. Wu, and N.E. Huang, "Ensemble empirical mode decomposition: a noise-assisted data analysis method," *Adv. Adaptive Data Analysis*, vol. 1, no. 1, pp.1-41, 2009.
- [14] V. Zarzoso, and P. Comon, "Robust independent component analysis by iterative maximization of the kurtosis contrast with algebraic optimal step size," *IEEE Transactions on Neural Networks*, vol. 21, no. 2, pp. 248-261, 2010.
- [15] Z. Zhao, L. Yang, D. Chen, and Y. Luo, "A human ECG identification system based on ensemble empirical mode decomposition," *Sensors*, vol. 13, no. 5, pp. 6832-6864, 2013.