



HAL
open science

Super-linear spreading in local bistable cane toads equations

Emeric Bouin, Christopher Henderson

► **To cite this version:**

Emeric Bouin, Christopher Henderson. Super-linear spreading in local bistable cane toads equations. 2016. hal-01293988

HAL Id: hal-01293988

<https://hal.science/hal-01293988>

Preprint submitted on 25 Mar 2016

HAL is a multi-disciplinary open access archive for the deposit and dissemination of scientific research documents, whether they are published or not. The documents may come from teaching and research institutions in France or abroad, or from public or private research centers.

L'archive ouverte pluridisciplinaire **HAL**, est destinée au dépôt et à la diffusion de documents scientifiques de niveau recherche, publiés ou non, émanant des établissements d'enseignement et de recherche français ou étrangers, des laboratoires publics ou privés.

Super-linear spreading in local bistable cane toads equations

Emeric Bouin ^{*} Christopher Henderson [†]

March 25, 2016

Abstract

In this paper, we study the influence of an Allee effect on the spreading rate in a local reaction-diffusion-mutation equation modeling the invasion of cane toads in Australia. We are, in particular, concerned with the case when the diffusivity can take unbounded values. We show that the acceleration feature that arises in this model with a Fisher-KPP, or monostable, non-linearity still occurs when this non-linearity is instead bistable, despite the fact that this kills the small populations. This is in stark contrast to the work of Alfaro, Gui-Huan, and Mellet-Roquejoffre-Sire in related models, where the change to a bistable non-linearity prevents acceleration.

Key-Words: Structured populations, reaction-diffusion equations, front acceleration

AMS Class. No: 35Q92, 45K05, 35C07

1 Introduction

1.1 The biological model

The invasion of cane toads in Australia has interesting features different from the standard spreading observed in most other species. The experimental data [29, 33] show that the invasion speed has steadily increased during the eighty years since the toads were introduced in Australia. In addition, the younger individuals at the edge of the invasion front have a significantly different morphology compared to other populations – their legs tend to be on average much longer than away from the front. This is just one example of a non-uniform space-trait distribution – see, for instance, a study on the expansion of bush crickets in Britain [34]. Several works have addressed the front invasions in ecology, where the trait is related to the dispersal ability [3, 15]. It has been observed that selection of more mobile individuals can occur, even if they have no advantage in their reproductive rate, due to the spatial sorting [1, 23, 29, 30].

In this paper, we focus on a model for this phenomenon (proposed in [4], based on the classical Fisher-KPP equation [17, 24]). The population density is structured by a spatial variable, $x \in \mathbb{R}$, and a motility variable $\theta \in \Theta \stackrel{\text{def}}{=} [\underline{\theta}, \infty)$, with a fixed $\underline{\theta} > 0$. This population undergoes diffusion in the trait variable θ , with a constant diffusion coefficient $\alpha > 0$, representing mutation, and in the

^{*}CEREMADE - Université Paris-Dauphine, UMR CNRS 7534, Place du Maréchal de Lattre de Tassigny, 75775 Paris Cedex 16, France. E-mail: bouin@ceremade.dauphine.fr

[†]Labex MILYON & UMPA & INRIA NUMED Team, Ecole Normale Supérieure de Lyon, UMR CNRS 5669 'UMPA', 46 allée d'Italie, F-69364 Lyon cedex 07, France. E-mail: christopher.henderson@ens-lyon.fr

spatial variable, with the diffusion coefficient θ , representing the effect of the trait on the spatial spreading rates of the species.

In the model proposed in [4], the reaction is of non-local, monostable type. In the case where Θ is bounded, the problem has been shown to be well-posed [35] and exhibit travelling-wave solutions [9]. When Θ is unbounded, sharp results have been proven for the local analogue while weaker results have been obtained for the non-local equation [8, 12]. In particular, the Cauchy problem exhibits propagation of of the order $t^{3/2}$.

1.2 Motivation

With a monostable non-linearity, acceleration, i.e. super-linear spreading of level sets, has been shown in various settings in mathematical biology [7, 11, 13, 14, 16, 18, 20–22, 26, 32]. We mention, in particular, the existence of acceleration for Fisher-KPP with fat-tailed initial data and for Fisher-KPP with the fractional Laplacian. In these models, acceleration is related to the notion of pulled fronts. In particular, we see that small populations far from the origin grow exponentially, causing the acceleration. Recently, in these settings, it has been shown that when the non-linearity is ignition or bistable type, there is no acceleration [2, 19, 27]. Indeed, the small populations that drive the acceleration are killed when the non-linearity is bistable. In other words, acceleration is a tail phenomenon, so when a bistable non-linearity kills the tails, there is no acceleration.

In this article, we obtain results in stark contrast with the results discussed above. Indeed, we demonstrate propagation of the order $t^{3/2}$ in the local cane toads equation with a bistable non-linearity. This shows that, for the cane toads equation, acceleration is a bulk phenomenon, i.e. that it is not driven by small populations far from the origin.

1.3 Main results

Fix a bistable non-linearity $f : [0, 1] \rightarrow [0, \infty]$ that is Lipschitz continuous function such that there exists $\alpha \in (0, \frac{1}{2})$ with

$$f(u) \geq u(u - \alpha)(1 - u).$$

We assume also that $f(0) = f(1) = 0$. We are interested in the long-time asymptotics of solutions to the Cauchy problem

$$\begin{cases} u_t = \theta u_{xx} + u_{\theta\theta} + f(u), & (t, x, \theta) \in \mathbb{R}^+ \times \mathbb{R} \times \Theta, \\ u_\theta(t, x, \underline{\theta}) = 0, & (t, x) \in \mathbb{R}^+ \times \mathbb{R}, \\ u(0, x, \theta) = u_0(x, \theta) & (x, \theta) \in \mathbb{R} \times \Theta. \end{cases} \quad (1.1)$$

The initial data function u_0 is assumed to satisfy

$$u_0 \geq \mathbb{1}_{\mathbb{R}^- \times [\underline{\theta}, (1+\lambda)\underline{\theta}]},$$

where $\lambda > 0$.

Our interest is in understanding where the “front” of u is. In other words, we will fix a level set and understand its propagation. Using the same equation with a monostable non-linearity as a super-solution to (1.1), the results from [8, 12] show that no level set can move faster than $O(t^{3/2})$. Our main result is to show that a lower bound of the same order holds as well.

Theorem 1.1. *Fix any $m \in (0, 1)$. There exists $\lambda_0 \in \mathbb{R}_+^*$, depending only on α and θ , and $\gamma \in \mathbb{R}_+^*$, depending only on α , such that if $\lambda \geq \lambda_0$ then*

$$\liminf_{t \rightarrow \infty} \frac{\max\{x : \exists \theta \in \Theta, u(t, x, \theta) = m\}}{t^{3/2}} \geq \gamma.$$

Before we continue, we note that we expect that this theorem holds in much greater generality. However, our interest is in showing that the acceleration in the cane toads equation is a also bulk phenomenon, as opposed to a tail phenomenon. Hence, we seek to simply show that acceleration occurs despite the bistable non-linearity, and we do not attempt to find the most general setting or the sharpest bounds.

To prove this theorem, we will follow a similar strategy as in a previous paper by the authors and Ryzhik [12] and that also appears in [6, 31]. In rough words, we will slide a suitable “bump” along suitable trajectories in the phase plane $\mathbb{R} \times \Theta$, making sure that the ball remains below the solution of the original Cauchy problem (1.1). Once the trajectories are well chosen, this will imply the acceleration phenomena claimed in theorem 1.1. However, the “bump” sub-solution is significantly more complicated to create in this setting than in the monostable one. Indeed, in [12], the sub-solution is created almost entirely with the linearized (around zero) problem. In our setting, of course, the linearized problem decays to zero on any traveling ball. We describe how to overcome this difficulty below. This is the main technical difficulty in the present article.

1.4 Strategy of the proof: constructing the sub-solution

We will now end this introduction by describing and presenting more precisely the major objects that are needed to prove theorem 1.1, namely the suitable trajectory and “bump”. To begin, we fix a large $T > 0$ and any level set height $m \in (0, 1)$. We then define a trajectory in the space $\mathbb{R} \times \Theta$ by

$$t \mapsto (X_T(t), \Theta_T(t)),$$

for any $t \in [0, T]$. The coordinate functions (X_T, Θ_T) will be defined later on (see section 2), and are crucial for our analysis. In order to slide a bump along this trajectory, we define the moving (growing) ellipse

$$\mathcal{E}_{t,\Lambda} = \left\{ (x, \theta) \in \mathbb{R} \times \Theta : \frac{(x - X_T(t))^2}{\Theta_T(t)} + (\theta - \Theta_T(t))^2 \leq \Lambda^2 \right\} \quad (1.2)$$

and the moving (growing) annulus

$$\mathcal{A}_{t,\Lambda} = \left\{ (x, \theta) \in \mathbb{R} \times \Theta : \Lambda^2 \leq \frac{(x - X_T(t))^2}{\Theta_T(t)} + (\theta - \Theta_T(t))^2 \leq 4\Lambda^2 \right\}, \quad (1.3)$$

where Λ is a positive constant to be chosen later that encodes the sizes of this two objects. For now, our only assumption on Λ is that $\Lambda \leq \lambda\theta/8$. Our goal is to build a sub-solution to (1.1) on the bigger ellipse $\mathcal{A}_{t,\Lambda} \cup \mathcal{E}_{t,\Lambda}$, what we called a “bump” above.

Since it is the main issue of the paper, let us now explain how we build a sub-solution on $\mathcal{A}_{t,\Lambda} \cup \mathcal{E}_{t,\Lambda}$. We shall patch together a solution $w^+ \geq \alpha$ on $\mathcal{E}_{t,\Lambda}$ of

$$\begin{cases} w_t^+ = \theta w_{xx}^+ + w_{\theta\theta}^+ + f_r(w^+), & (x, \theta) \in \mathcal{E}_{t,\Lambda}, \\ w^+ \equiv \alpha, & (x, \theta) \in \partial\mathcal{E}_{t,\Lambda}, \end{cases} \quad (1.4)$$

and a positive solution $w^- \leq \alpha$ on $\mathcal{A}_{t,\Lambda}$ of

$$\begin{cases} w_t^- = \theta w_{xx}^- + w_{\theta\theta}^- + f_r(w^-), & (x, \theta) \in \mathcal{A}_{t,\Lambda}, \\ w^- \equiv \alpha, & (x, \theta) \in \partial\mathcal{E}_{t,\Lambda}, \\ w^- \equiv 0, & (x, \theta) \in \partial\mathcal{A}_{t,\Lambda} \setminus \partial\mathcal{E}_{t,\Lambda}. \end{cases} \quad (1.5)$$

Notice that in these two previous definitions, there is a small but important discrepancy between the nonlinearities used and in (1.1). The new non-linearity f_r is defined as follows for any $r \in (2\alpha, 1]$:

$$f_r(u) \stackrel{\text{def}}{=} \begin{cases} u(u - \alpha)(1 - u), & \text{for } u \leq \alpha, \\ c_r u(u - \alpha)(r - u), & \text{for } u \geq \alpha. \end{cases} \quad (1.6)$$

where we define $c_r = (1 - \alpha)(r - \alpha)^{-1}$. It is easily verified that $f_r(u) \leq f(u)$ for all u , and it is clear that f_r is Lipschitz continuous. For technical reasons, we are required to take r to be slightly less than 1 in the sequel.

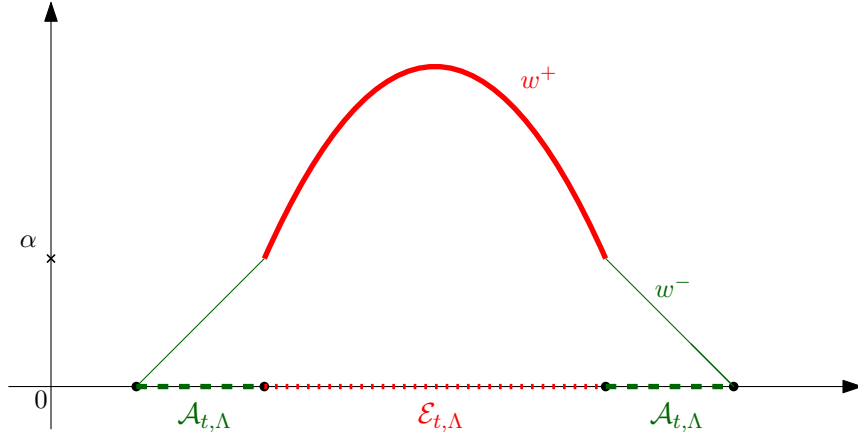


Figure 1.1: Schematic plot of the flying saucer like sub-solution w that is slid along the trajectory. The bolded green line denotes the set \mathcal{A}_t , the red dotted one the set \mathcal{E}_t .

Now that we have defined w^\pm , we obtain a sub-solution w of (1.1) on $\mathbb{R}^+ \times \mathbb{R} \times \Theta$ defined by

$$w(t, x, \theta) = w^+ \mathbb{1}_{\mathcal{E}_{t,\Lambda}} + w^- \mathbb{1}_{\mathcal{A}_{t,\Lambda}}. \quad (1.7)$$

By construction, w is Lipschitz continuous. However, it need not be a C^1 function along $\partial\mathcal{A}_{t,\Lambda} \setminus \partial\mathcal{E}_{t,\Lambda}$ and $\partial\mathcal{E}_{t,\Lambda}$. In order to be a sub-solution, we must check the convexity of w along both boundaries. The positivity of w^- ensures that the convexity of w is correct at the boundary $\partial\mathcal{A}_{t,\Lambda} \setminus \partial\mathcal{E}_{t,\Lambda}$. However, to make sure that it is indeed a sub-solution at the boundary $\partial\mathcal{E}_{t,\Lambda}$ we need to check properly that the normal derivatives along this boundary are well ordered:

$$|\partial_n w^+| \geq |\partial_n w^-| \quad \text{on } \partial\mathcal{E}_{t,\Lambda}, \quad (1.8)$$

where ∂_n is the (outward) normal derivative to the boundary of $\mathcal{E}_{t,\Lambda}$. This is the main technical issue at hand in the proof.

1.5 Numerics and comments

Numerics

Let us enlighten theorem 1.1 by showing in fig. 1.2 some numerical insights of the acceleration behavior. One can compare these to [8,10] that are numerics related to the study of the acceleration in the nonlocal cane toads equation.

A nonlocal bistable model

We conclude the introduction by discussing a nonlocal version of (1.1):

$$\begin{cases} n_t = \theta n_{xx} + n_{\theta\theta} + n(\rho - \alpha)(1 - \rho), & (t, x, \theta) \in \mathbb{R}^+ \times \mathbb{R} \times \Theta, \\ \rho(t, x) := \int_{\underline{\theta}}^{\infty} n(t, x, \theta) d\theta, & (t, x) \in \mathbb{R}^+ \times \mathbb{R}, \\ n_{\theta}(t, x, \underline{\theta}) = 0, & (t, x) \in \mathbb{R}^+ \times \mathbb{R}, \\ n(0, x, \theta) = n_0(x, \theta) & (x, \theta) \in \mathbb{R} \times \Theta. \end{cases} \quad (1.9)$$

It is easy to see that one may bound the propagation rate above by using the monostable model with growth rate $r = \sup_{\rho \in \mathbb{R}^+} ((\rho - \alpha)(1 - \rho))$. This implies that the propagation can be no faster than $O(t^{3/2})$. However, obtaining a lower bound is significantly more complicated. We are led to the following conjecture, which we are unable to prove at this time.

Conjecture 1.2. *The model (1.9) exhibits acceleration. That is, the level sets of ρ move super-linearly in time.*

We provide some numerics in fig. 1.3 to support this conjecture. However, the proof of such a result is far beyond the scope of this paper. Indeed, it requires to study the dynamics of the zone where ρ is greater than α , which is not at the edge of the front at all, so that an argument by contradiction as in [12] is impossible. Moreover, to our knowledge, it is not possible to derive a probabilistic framework such as in [8] (and the references therein) to be able to study the nonlocal model (1.9). As new tools will be needed to study this model, we thus leave this conjecture for further investigation.

Outline of the article

In section 2, we give the main outline of the proof of theorem 1.1 assuming the main proposition 2.1. In section 3, we prove this proposition by finishing the construction of the subsolution (1.7), and reducing it to showing a proposition 3.2 that gives (1.8). This main lemma involves understanding a related steady state problem, which we analyze in sections 4 and 5.

Acknowledgments

EB is very grateful to Cambridge University for its hospitality during the second semester of the academic year 2015-2016. EB and CH acknowledge the support of the ERC Grant MATKIT (ERC-

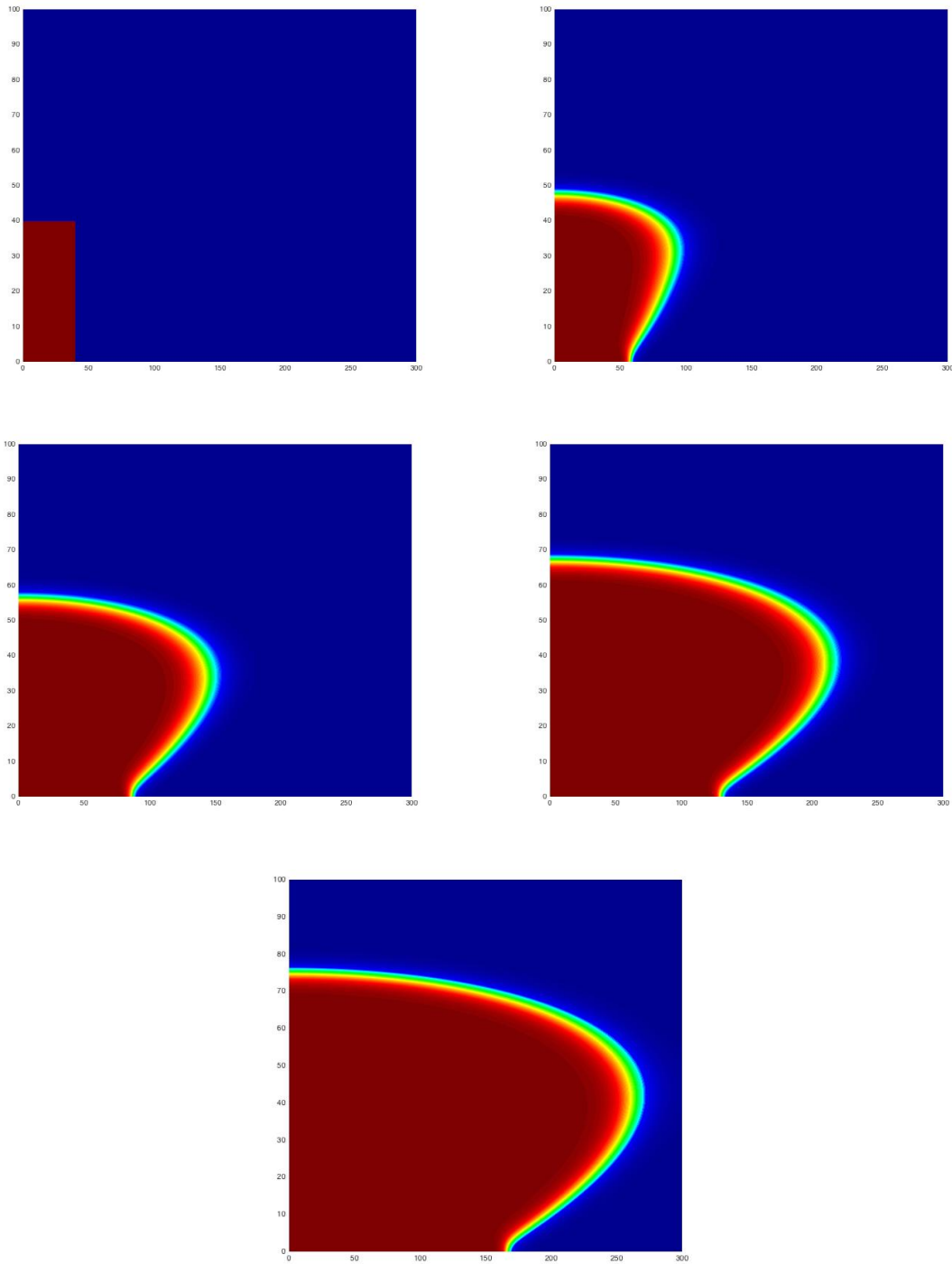


Figure 1.2: Numerical simulations of the Cauchy problem of equation (1.1) at a fixed time, in the phase space $\mathbb{R} \times \Theta$. From top left to bottom right: *the initial data*, $t = 30$, $t = 60$, $t = 90$, $t = 120$. One can track the accelerated behavior, for example on the space axis. The invasion at the back in the θ -direction is expected to be linear in time. This pattern is very similar as for the monostable cane toads equation, see also [8, 10, 12].

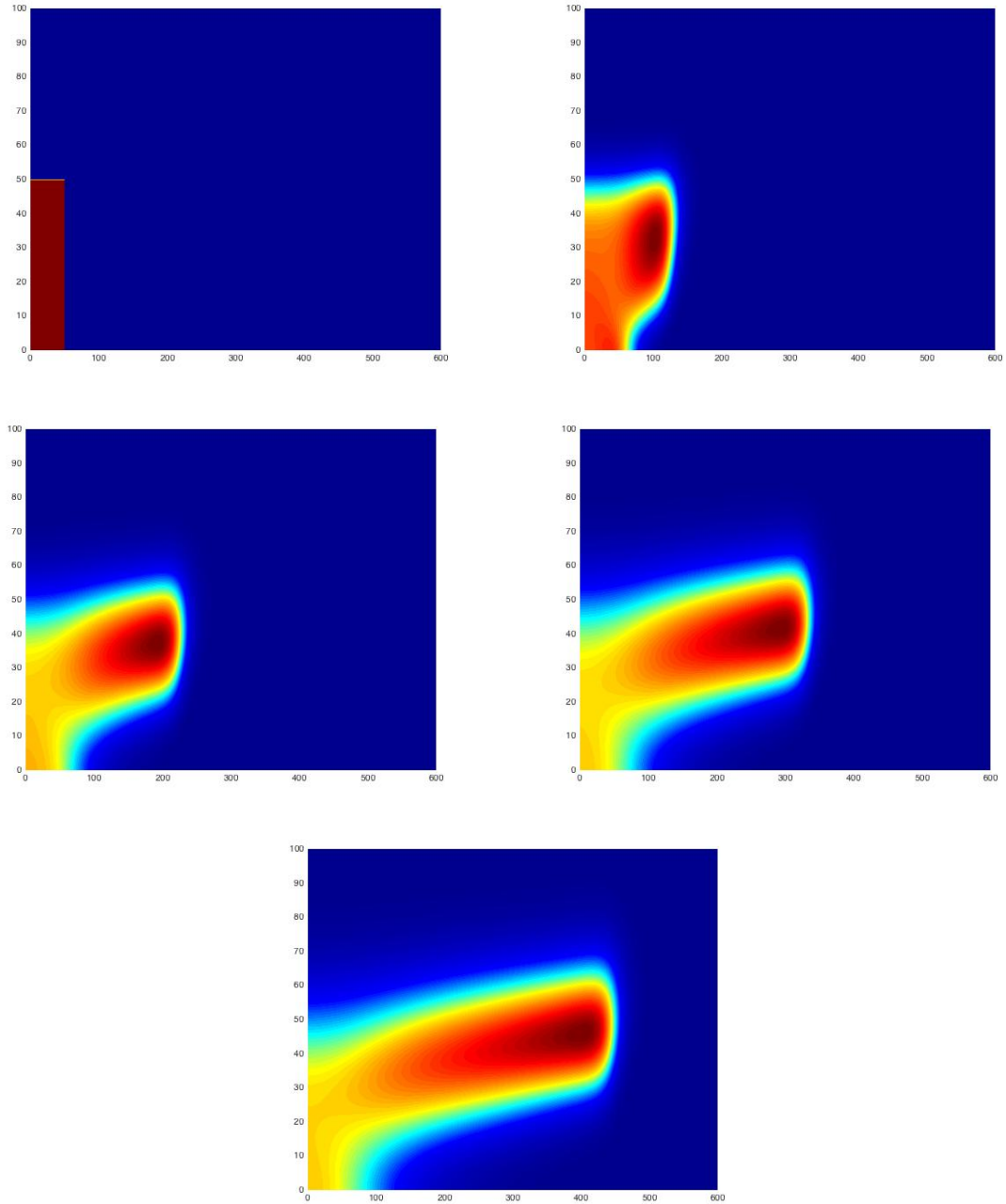


Figure 1.3: Numerical simulations of the Cauchy problem of equation (1.9) at a fixed time, in the phase space $\mathbb{R} \times \Theta$. From top left to bottom right: *the initial data*, $t = 30$, $t = 60$, $t = 90$, $t = 120$. Here we see the distinctive "up-and-over" behavior that leads to acceleration for the non-local, monostable model. One can track the accelerated behavior, for example on the space axis.

2011-StG). Part of this work was performed within the framework of the LABEX MILYON (ANR-10-LABX-0070) of Université de Lyon, within the program “Investissements d’Avenir” (ANR-11-IDEX-0007) operated by the French National Research Agency (ANR). In addition, this project has received funding from the European Research Council (ERC) under the European Unions Horizon 2020 research and innovation programme (grant agreement No 639638).

2 The acceleration feature - proof of theorem 1.1

In this section, we prove theorem 1.1. For this purpose, we first define carefully the trajectory that has been introduced in the previous section. Second, we take for granted the existence of a sub-solution of the form (1.7) (this will be the object of section 3) and we show how this implies the acceleration feature stated in theorem 1.1.

We now define the trajectory $t \in [0, T] \mapsto (X_T(t), \Theta_T(t)) \in \mathbb{R} \times \Theta$. For this purpose, we concatenate two trajectories $t \mapsto (X_T^{(1)}(t), \Theta_T^{(1)}(t))$ and $t \mapsto (X_T^{(2)}(t), \Theta_T^{(2)}(t))$:

$$X_T = \begin{cases} X_T^{(1)}, & t \in [0, \frac{T}{2}], \\ X_T^{(2)}, & t \in [\frac{T}{2}, T], \end{cases} \quad \Theta_T = \begin{cases} \Theta_T^{(1)}, & t \in [0, \frac{T}{2}], \\ \Theta_T^{(2)}, & t \in [\frac{T}{2}, T]. \end{cases}$$

These latter trajectories are defined by

$$\forall t \in \left[0, \frac{T}{2}\right], \quad (X_T^{(1)}, \Theta_T^{(1)})(t) = \left(-\frac{\lambda}{4}\underline{\theta}, ct + \left(1 + \frac{3\lambda}{4}\right)\underline{\theta}\right),$$

and

$$\forall t \in \left[\frac{T}{2}, T\right], \quad (X_T^{(2)}, \Theta_T^{(2)})(t) = \left(\frac{c(t - \frac{T}{2})T}{\sqrt{\frac{cT}{2} + (1 + \frac{3\lambda}{4})\underline{\theta}}} - \frac{\lambda}{4}\underline{\theta}, \frac{cT}{2} + \left(1 + \frac{3\lambda}{4}\right)\underline{\theta}\right).$$

In related works [10, 12] about the standard local and non-local cane toads equations, some trajectories of the same kind have been introduced.

Before continuing, we point out that our choice of $\Lambda \leq \lambda\underline{\theta}/8$ gives us that

$$\mathcal{E}_{0,\Lambda} \cup \mathcal{A}_{0,\Lambda} \subset (-\infty, 0] \times [\underline{\theta}, (1 + \lambda)\underline{\theta}].$$

This implies that w will initially sit below u , allowing us to apply the maximum principle. With this in mind, we state in (a very minimalist fashion) a proposition that will imply our main theorem 1.1.

Proposition 2.1. *Fix $m \in (0, 1)$. There exist positive constants λ_0 , Λ_0 , T_0 , and c_0 , such that if $\Lambda \geq \Lambda_0$, $T \geq T_0$, and $c \leq c_0$, then there exists a sub-solution w of the form (1.7) satisfying (1.8) such that*

$$\forall (x, \theta) \in \mathcal{E}_{T, \frac{\Lambda}{2}}, \quad w^+(T, x, \theta) \geq m. \quad (2.1)$$

In addition, all constants λ_0 , Λ_0 , c_0 , and T_0 are bounded for m bounded away from 1, and λ_0 depends on Λ .

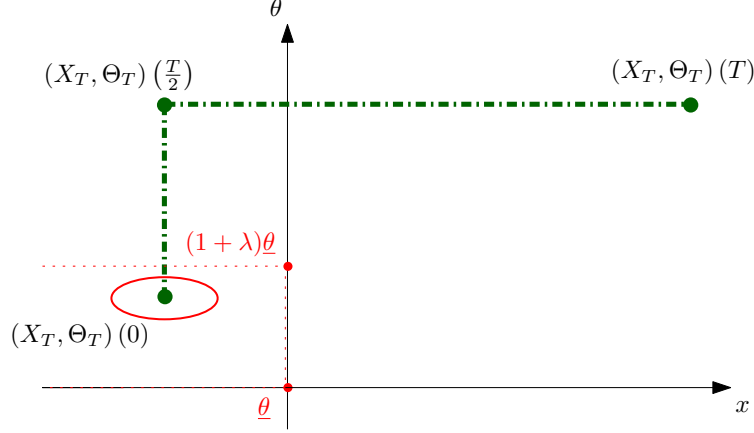


Figure 2.1: Plot of the trajectory in the phase plane (x, θ) . We emphasize that the first part of the trajectory corresponds to a movement towards large traits only in the θ -direction, whereas the second part of the trajectory corresponds to a movement towards large space positions only in the x -direction, *at an accelerated spreading rate*. The red dotted line is the support of the initial condition. The red bold line is the initial support of the subsolution w : it sits inside the support of the initial condition.

We will prove this proposition in section 3. Let us now conclude the proof of theorem 1.1.

We simply write, as a consequence of the comparison principle, the following:

$$\begin{aligned}
\liminf_{T \rightarrow \infty} \frac{\max \{x : \exists \theta \in \Theta, u(T, x, \theta) \geq m\}}{T^{3/2}} &\geq \liminf_{T \rightarrow \infty} \frac{\max \{x : \exists \theta \in \Theta, w^+(T, x, \theta) \geq m\}}{T^{3/2}} \\
&\geq \liminf_{T \rightarrow \infty} \frac{X_T^{(2)}(T)}{T^{3/2}} \\
&= \liminf_{T \rightarrow \infty} \left(\frac{\frac{c}{2}T^2}{T^{3/2} \left(\sqrt{\frac{cT}{2}} + (1 + \frac{3\lambda}{4})\underline{\theta} \right)} - \frac{\sqrt{(1 + \frac{3\lambda}{4})\underline{\theta}}}{T^{3/2}} \right) \\
&= \sqrt{\frac{c}{2}}.
\end{aligned}$$

After calling the latter constant γ , this finishes the proof.

Remark 2.2. *To find optimal constants, one could write a general framework for the trajectories such as for the cane toads equation in [12] and try to optimize afterwards. However, in this paper, the suboptimal trajectories are not the only reason for sub-optimality. One would have to quantify all the constants in various lemmas in this paper, that are not strongly related to the definition of the trajectories themselves. Since this is not our main interest, we opt for the simplest possible presentation.*

3 Building the sub-solution w along trajectories

In this section, we will prove proposition 2.1, by working on the two components of the trajectories separately. Since we want to build a sub-solution along a trajectory (X_T, Θ_T) , we work in the moving coordinates introduced in [12])

$$y = \frac{x - X_T}{\sqrt{\Theta_T}}, \quad \eta = \theta - \Theta_T.$$

The moving ellipse and annulus $\mathcal{E}_{t,\Lambda}$ and $\mathcal{A}_{t,\Lambda}$ are respectively transformed into the following stationary circle and annulus \mathcal{E}_Λ and \mathcal{A}_Λ :

$$\mathcal{E}_\Lambda = \{(y, \eta) : y^2 + \eta^2 \leq \Lambda^2\}, \quad \mathcal{A}_\Lambda = \{(y, \eta) : \Lambda^2 \leq y^2 + \eta^2 \leq 4\Lambda^2\}.$$

The Dirichlet boundary condition that we enforce on $\partial\mathcal{E}_{t,\Lambda}$ pushes us to make the following change of unknown functions:

$$w^+(t, x, \theta) = \alpha + v^+(t, y, \eta), \quad w^-(t, x, \theta) = \alpha - v^-(t, y, \eta).$$

We see directly that v^+ and v^- solve respectively, for $t \in [0, T]$,

$$\begin{cases} v_t^+ - c_1(y, t)v_y^+ - c_2(t)v_\eta^+ = d(\eta, t)v_{yy}^+ + v_{\eta\eta}^+ + f_r(\alpha + v^+), & (y, \eta) \in \mathcal{E}_\Lambda, \\ v^+(t, y, \eta) = 0, & (y, \eta) \in \partial\mathcal{E}_\Lambda. \end{cases} \quad (3.1)$$

$$\begin{cases} v_t^- - c_1(y, t)v_y^- - c_2(t)v_\eta^- = d(\eta, t)v_{yy}^- + v_{\eta\eta}^- - f_r(\alpha - v^-), & (y, \eta) \in \mathcal{A}_\Lambda, \\ v^-(t, y, \eta) = 0, & (y, \eta) \in \partial\mathcal{E}_\Lambda, \\ v^-(t, y, \eta) = \alpha, & (y, \eta) \in \partial\mathcal{A}_\Lambda \setminus \partial\mathcal{E}_\Lambda. \end{cases} \quad (3.2)$$

where we have defined

$$c_1(y, t) := \frac{\dot{X}_T}{\sqrt{\Theta_T}} + \frac{y\dot{\Theta}_T}{2\Theta_T}, \quad c_2(t) := \dot{\Theta}_T, \quad d(\eta, t) := 1 + \frac{\eta}{\Theta_T}.$$

The maximum principle assures us that $0 \leq v^- \leq \alpha$ holds everywhere in time and space as long as the initial conditions of v^- satisfy the same bound. Similarly, The maximum principle assures us that $0 \leq v^+ \leq r - \alpha$ holds everywhere in time and space as long as the initial conditions of v^+ satisfy the same bound.

We now need to fix the initial conditions. It is easy to see that the non-constant coefficients in the equation vanish as λ tends to infinity. Hence, it behooves us to look at the steady state solutions to (3.1) and (3.2) where the dependence on λ disappears.

We define for $i = 1, 2$, corresponding to each part of the trajectory,

$$c_{(i)}^\infty := \left(c_{1,(i)}^\infty, c_{2,(i)}^\infty \right).$$

For clarity, we emphasize that $c_{(1)}^\infty$ corresponds to the limit of the functions c_1 and c_2 on the interval $[0, T/2]$ and $c_{(2)}^\infty$ corresponds to the limit of the functions c_1 and c_2 on the interval $[T/2, T]$.

For any $\Lambda \in \mathbb{R}^+$, we thus look for solutions $\varphi_{(i)}^\pm$ of

$$\begin{cases} -\Delta\varphi_{(i)}^- - c_{(i)}^\infty \cdot \nabla\varphi_{(i)}^- = -f_{r_{(i)}}(\alpha - \varphi_{(i)}^-), & (y, \eta) \in \mathcal{A}_\Lambda, \\ \varphi_{(i)}^-(y, \eta) = 0, & (y, \eta) \in \partial\mathcal{E}_\Lambda, \\ \varphi_{(i)}^-(y, \eta) = \alpha, & (y, \eta) \in \partial\mathcal{A}_\Lambda \setminus \partial\mathcal{E}_\Lambda. \end{cases} \quad (3.3)$$

and

$$\begin{cases} -\Delta\varphi_{(i)}^+ - c_{(i)}^\infty \cdot \nabla\varphi_{(i)}^+ = f_{r_{(i)}}(\alpha + \varphi_{(i)}^+), & (y, \eta) \in \mathcal{E}_\Lambda, \\ \varphi_{(i)}^+(y, \eta) = 0, & (y, \eta) \in \partial\mathcal{E}_\Lambda, \end{cases} \quad (3.4)$$

where we choose $r_{(1)} = 1$ and we leave $r_{(2)} \in (\max\{m, 2\alpha\}, 1)$ to be determined. We now state the lemma regarding these steady solutions that we require.

Lemma 3.1. *There exists positive constants c_0 and Λ_0 such that if $\|c_{(i)}^\infty\| \leq c_0$ and $\Lambda > \Lambda_0$, then there exist non-trivial solutions $\varphi_{(i)}^-$ and $\varphi_{(i)}^+$ to (3.3) and (3.4), respectively. Moreover, if $\varphi_{(i)}^+$ is any steady solution to (3.4), then for any $\epsilon > 0$, there exist Λ_ϵ and $L_\epsilon \leq \Lambda_\epsilon/2$, both depending only on ϵ such that if $\Lambda > \Lambda_\epsilon$ then*

$$\varphi_{(i)}^+(y, \eta) \geq r_{(i)} - \alpha - \epsilon \quad (3.5)$$

whenever $\text{dist}((y, \eta), \partial\mathcal{E}_\Lambda) > L_\epsilon$.

We postpone the proof of this lemma to section 4. We now complete the definition of the function w by setting the initial conditions

$$v_{(1)}^-(0, \cdot) = \varphi_{(1)}^-, \quad v_{(1)}^+(0, \cdot) = \varphi_{(1)}^+,$$

and

$$v_{(2)}^-(T/2, \cdot) = \varphi_{(2)}^-, \quad v_{(2)}^+(0, \cdot) = \varphi_{(2)}^+.$$

With $v_{(i)}^\pm$ defined, we may now state a proposition guaranteeing that w will satisfy the condition (1.8) ensuring that it is a sub-solution. This proposition will be proved at the end of this section.

Proposition 3.2. *There exists positive constants Λ_0 , T_0 , and c_0 , such that if $\Lambda \geq \Lambda_0$, $T \geq T_0$, and $c \leq c_0$, then v^+ and v^- , defined above, satisfy*

$$|\partial_n v_{(i)}^+| \geq |\partial_n v_{(i)}^-| \quad (3.6)$$

on \mathcal{E}_Λ .

With the initial conditions we have fixed for v^\pm , it is clear that as Λ tends to infinity, v^\pm should tend to φ^\pm uniformly in the C^1 topology. The following lemma ensures that this convergence holds and is uniform in T .

Lemma 3.3. *Fix $\epsilon > 0$. There exists Λ_ϵ and λ_ϵ such that if $\Lambda \geq \Lambda_\epsilon$ and $\lambda \geq \lambda_\epsilon$ then*

$$\|v_{(i)}^\pm(t, \cdot) - \varphi_{(i)}^\pm(\cdot)\|_{C^1} \leq \epsilon.$$

Moreover, this convergence holds uniformly in t .

We postpone the proof of this Lemma until the dedicated section 5. We now show how the combination of lemma 3.1 and lemma 3.3 finally implies proposition 2.1. After changing variables it is equivalent to proving the same result for v^+ . This is exactly now that we are going to travel along the trajectory (X_T, Θ_T) and play with parameters.

We start with the first part of the trajectory. Fix a positive constant $\epsilon < (1 - m)/3$. The discussion above implies that we may find Λ_0, T_0 and δ_0 such that if $\Lambda \geq \Lambda_0, T \geq T_0$, and $c \leq c_0$, then we have that v^+ gives a subsolution to u such that

$$u\left(\frac{T}{2}, \cdot\right) \geq \alpha + v^+\left(\frac{T}{2}, \cdot\right) \geq \varphi_{(1)}^+(\cdot) - \epsilon + \alpha \geq 1 - 2\epsilon \quad (3.7)$$

on the set $\mathcal{E}_{\Lambda/2}$. This concludes our sliding over the first part of the trajectory.

First, by increasing Λ_0 if necessary, we may find $r_{(2)} := r \geq \epsilon + m$ in the interval $(2\alpha, 1 - 2\epsilon)$. By the maximum principle any solution to (1.4) will be less than or equal to r .

With the choice $\Lambda' = \Lambda/2$, we find that, by increasing T_0 and Λ_0 , if necessary, if $T \geq T_0$ and $\Lambda' \geq \Lambda_0$, then w is a sub-solution to u such that

$$u(T, \cdot) \geq w_{(2)}^+(T, \cdot) = v_{(2)}^+(T, \cdot) + \alpha \geq \varphi_{(2)}^+(\cdot) - \epsilon + \alpha \geq m.$$

on the set $\mathcal{E}_{\frac{\Lambda}{2}}$. We point out that (3.7) is crucial to guarantee that w is a sub-solution to u on the interval $[T/2, T]$.

We finish this section by reducing proposition 3.2 to the following lemma.

Lemma 3.4. *For Λ sufficiently large,*

$$|\partial_n \varphi_{(i)}^+(\Lambda \hat{v})| > |\partial_n \varphi_{(i)}^-(\Lambda \hat{v})| \quad (3.8)$$

holds uniformly in $\hat{v} \in \mathbb{S}^1(\mathbb{R}^2)$.

We postpone the proof of this lemma to section 4 below.

Proof of proposition 3.2. Fix any unit vector $\hat{v} \in \mathbb{S}^1(\mathbb{R}^2)$ and look at any point $\Lambda \hat{v}$ on the boundary of \mathcal{E}_Λ . Then (3.6) follows from lemma 3.3 and lemma 3.4. \square

4 Lemmas about the steady solutions

In this section, we prove lemma 3.1 and lemma 3.4, which give the desired behavior for the steady states $\varphi_{(i)}^\pm$.

Proof of lemma 3.1. The existence of φ^\pm is an easy result of a fixed point argument using the principle Dirichlet eigenfunction as a sub-solution to obtain non-triviality. As such, we omit it here.

We now show the lower bound for φ^+ . We first show a preliminary lower bound for φ^+ that we will bootstrap to the lower bound (2.1). Let L be a constant yet to be determined. Let (y_L, η_L) be the location of the maximum of

$$e^{-\frac{1}{2}c^\infty \cdot (y, \eta)} \cos\left(\frac{\pi y}{2L}\right) \cos\left(\frac{\pi \eta}{2L}\right).$$

Now fix any point (y_0, η_0) to be determined and define

$$\tilde{\psi}(y, \eta) = e^{-\frac{1}{2}c^\infty \cdot (y+y_L-y_0, \eta+\eta_L-\eta_0)} \cos\left(\frac{\pi}{2L}(y+y_L-y_0)\right) \cos\left(\frac{\pi}{2L}(\eta+\eta_L-\eta_0)\right), \quad (4.1)$$

Notice that, by construction, the maximum of $\tilde{\psi}$ occurs at (y_0, η_0) . Define

$$\psi = \frac{\gamma}{\tilde{\psi}(y_0, \eta_0)} \tilde{\psi}, \quad (4.2)$$

where γ is a small parameter to be chosen later. It is easy to check that

$$-\Delta\psi - c^\infty \cdot \nabla\psi - f_r(\alpha + \psi) \leq \left(\frac{\|c^\infty\|^2}{4} + \frac{\pi^2}{2L^2} - \frac{c_r\alpha(r-\alpha)}{2} \right) \psi \leq 0,$$

on the set

$$\mathcal{C} = \{(y, \eta) \mid |y - (y_0 - y_L)| = L \text{ or } |\eta - (\eta_0 - \eta_L)| = L\}.$$

The first inequality follows by a simple computation and by choosing γ sufficiently small, depending only on r and f , such that

$$\frac{c_r\alpha(r-\alpha)}{2}u \leq f_r(\alpha + u)$$

for all $u \in [0, \gamma]$. The last inequality follows by decreasing c_0 and increasing L , if necessary.

Hence, ψ is sub-solution to φ^+ which satisfies Dirichlet boundary conditions on the square \mathcal{C} . This implies that as long as $\mathcal{C} \subset \mathcal{E}_\Lambda$, we have $\psi \leq \varphi^+$ on \mathcal{C} . We point out that a weak condition for $\mathcal{C} \subset \mathcal{E}_\Lambda$ is that

$$\text{dist}((y_0, \eta_0), \partial\mathcal{E}_\Lambda) \geq 2L + |y_L| + |\eta_L|. \quad (4.3)$$

This, in turn, implies that

$$\varphi^+(y_0, \eta_0) \geq \gamma,$$

and this may be valid as soon as (y_0, η_0) satisfy (4.3).

Now we claim that φ^+ tends to $r - \alpha$ locally uniformly in the set $\mathcal{E}_{\Lambda-L}$ as Λ and L tend to ∞ . To prove this, we argue by contradiction. If this is not true, then we may find a positive $\epsilon > 0$, sequences $L_k \leq \Lambda_k/2$ tending to infinity, and a sequence of points $(y_k, \eta_k) \in \mathcal{E}_{\Lambda_k-L_k}$ such that $\varphi^+(y_k, \eta_k) \leq r - \alpha - \epsilon$.

Let $\varphi_k^+(y, \eta) = \varphi^+(y+y_k, \eta+\eta_k)$. Elliptic regularity ensures that φ_k^+ converges locally uniformly in \mathcal{C}^2 to a function φ_∞^+ . By assumption, we have that $\varphi_\infty^+(0, 0) \leq r - \alpha - \epsilon$. By our work above, we have that $\varphi_\infty^+ \geq \gamma$ everywhere. By the maximum principle, we have that $\varphi_\infty^+ \leq r - \alpha$ everywhere. Finally, we have that φ_∞^+ satisfies (3.4). We may assume that $(0, 0)$ is a positive global local minimum for φ_∞ since, if not, we may simply re-center the equation again, taking limits if necessary. It is apparent, however, that a solution to (3.4) can only have a minimum at the zeros of $f_r(\alpha + \cdot)$, which are 0 and $r - \alpha$. Thus, we arrive at a contradiction. Hence, it must be that φ^+ tends uniformly to $r - \alpha$, finishing the proof of the claim. \square

We are now in a position to prove lemma 3.4, showing the ordering of the normal derivatives for the steady states $\varphi_{(i)}^\pm$.

Proof of lemma 3.4. We assume the contrary. Suppose there is a sequence of \hat{v}_k and Λ_k , with Λ_k tending to infinity, such that

$$|\partial_n \varphi^+(\Lambda_k \hat{v}_k)| \leq |\partial_n \varphi^-(\Lambda_k \hat{v}_k)| + o_{k \rightarrow +\infty}(1), \quad (4.4)$$

By the compactness of the unit circle, \hat{v}_k converges (up to a subsequence) to some unit vector \hat{v}_∞ .

Define $(y_k, \eta_k) = \Lambda_k \hat{v}_k$. We center the solutions on it. In other words, we define

$$z_k^-(y, \eta) = \varphi^-(y_k + y, \eta_k + \eta), \quad z_k^+(y, \eta) = \varphi^+(y_k - y, \eta_k - \eta).$$

The new function z_k^+ satisfies

$$\begin{cases} -\Delta z_k^+ + c^\infty \cdot \nabla z_k^+ = f_r(\alpha + z_k^+), & (y - y_k, \eta - \eta_k) \in \mathcal{E}_{\Lambda_k}, \\ z_k^+(y, \eta) = 0, & (y - y_k, \eta - \eta_k) \in \partial \mathcal{E}_{\Lambda_k}, \end{cases} \quad (4.5)$$

We point out that the condition

$$\begin{aligned} (y - y_k, \eta - \eta_k) \in E_{\Lambda_k} &\iff \|(y, \eta)\|^2 - 2(y, \eta) \cdot (\Lambda_k \hat{v}_k) + \Lambda_k^2 \leq \Lambda_k^2, \\ &\iff \|(y, \eta)\|^2 \leq 2\Lambda_k(y, \eta) \cdot \hat{v}_k. \end{aligned}$$

The new function z_k^- satisfies

$$\begin{cases} -\Delta z_k^- - c^\infty \cdot \nabla z_k^- = -f_r(\alpha - z_k^-), & (y + y_k, \eta + \eta_k) \in \mathcal{A}_{\Lambda_k}, \\ z_k^-(y, \eta) = 0, & (y + y_k, \eta + \eta_k) \in \partial \mathcal{E}_{\Lambda_k}, \\ z_k^-(y, \eta) = \alpha, & (y + y_k, \eta + \eta_k) \in \partial \mathcal{A}_{\Lambda_k} \setminus \partial \mathcal{E}_{\Lambda_k}. \end{cases} \quad (4.6)$$

We point out that the condition

$$\begin{aligned} (y + y_k, \eta + \eta_k) \in A_{\Lambda_k} &\iff \Lambda_k^2 \leq \|(y, \eta)\|^2 + 2(y, \eta) \cdot (\Lambda_k \hat{v}_k) + \Lambda_k^2 \leq 4\Lambda_k^2, \\ &\iff 0 \leq \|(y, \eta)\|^2 + 2\Lambda_k(y, \eta) \cdot \hat{v}_k \leq 3\Lambda_k^2, \end{aligned}$$

By elliptic regularity theory, we may take local uniform limits to obtain z^- and z^+ as the limits of z_k^- and z_k^+ , respectively, which solve

$$\begin{cases} -\Delta z^+ + c^\infty \cdot \nabla z^+ = f_r(\alpha + z^+), & (y, \eta) \in P, \\ z^+(y, \eta) = 0, & (y, \eta) \in \partial P, \end{cases} \quad (4.7)$$

and

$$\begin{cases} -\Delta z^- - c^\infty \cdot \nabla z^- = -f_r(\alpha - z^-), & (y, \eta) \in P, \\ z^-(y, \eta) = 0, & (y, \eta) \in \partial P, \end{cases} \quad (4.8)$$

where we have defined the half-plane

$$P \stackrel{\text{def}}{=} \{(y', \eta') : (y', \eta') \cdot \hat{v}_\infty > 0\}.$$

Due to lemma 3.1, we conclude the following about z^\pm . In addition, $z^\pm(y, \eta)$ is uniformly positive away from this boundary. Furthermore, $z^+(y, \eta)$ converges to $r - \alpha$ and $z^-(y, \eta)$ converges to α as the distance between (y, η) and ∂P tends to infinity.

Finally, we point out that (4.4) implies that $\partial_n z^+(0, 0) \leq \partial_n z^-(0, 0)$, where we have removed the absolute values since the sign of both quantities is clearly positive.

This contradicts the following lemma, which we prove in the following section as it requires the results from lemma 5.1.

Lemma 4.1. *There exists $\delta > 0$ such that if $\|c^\infty\| \leq \delta$ then $\partial_n z^+(0, 0) > \partial_n z^-(0, 0)$.*

Since we have reached a contradiction, it must be that (3.8) holds for all Λ sufficiently large. This finishes the proof of lemma 3.4. \square

5 Convergence to the steady states: Proof of lemma 3.3

Before we prove lemma 3.3, we prove a few useful lemmas. The first of these is the uniqueness of solutions to the related steady half-plane problem. We require this to prove lemma 4.1, stated above.

We also note that lemma 5.1 with $c^\infty = 0$ is well-known. We include the proof of the case with constant c^∞ , which is virtually unchanged, for completeness.

Lemma 5.1. *Let $(y_b, \eta_b) \in \mathbb{R}^2$ and $\hat{v} \in \mathbb{S}^1(\mathbb{R}^2)$. Define*

$$P = \{(y, \eta) : 0 \leq (y + y_b, \eta + \eta_b) \cdot \hat{v}\}.$$

For any choice of c^∞ , there is at most one solution to

$$\begin{cases} -\Delta z^+ + c^\infty \cdot \nabla z^+ = f_r(\alpha + z^+), & (y, \eta) \in P, \\ z^+(y, \eta) = 0, & (y, \eta) \in \partial P, \end{cases} \quad (5.1)$$

which satisfies Dirichlet boundary conditions on ∂P and which tends uniformly to $r - \alpha$ as $\text{dist}((y, \eta), \partial P)$ tends to infinity.

In addition, for any choice of c^∞ , there is at most one solution to

$$\begin{cases} -\Delta z^- + c^\infty \cdot \nabla z^- = -f_r(\alpha - z^-), & (y, \eta) \in P, \\ z^-(y, \eta) = 0, & (y, \eta) \in \partial P, \end{cases} \quad (5.2)$$

which satisfies Dirichlet boundary conditions on ∂P and which tends uniformly to α as $\text{dist}((y, \eta), \partial P)$ tends to infinity.

Proof of lemma 5.1. We show the argument for z^+ but the argument for z^- is identical. By rotation and translation, we may assume that $\hat{v} = (1, 0)$ and that $(y_b, \eta_b) = (0, 0)$. We will use a sliding method [5].

We proceed by contradiction and assume that z_1 and z_2 solve (5.1) and satisfy $z_2(y_0, \eta_0) < z_1(y_0, \eta_0)$ for some point (y_0, η_0) .

Fix $u_0 \in (0, r - \alpha)$ large enough such that

$$\tilde{f}(u) := u(\alpha + u)(r - \alpha - u)$$

is monotonically decreasing for $u \geq u_0$. Since z_1 and z_2 tend uniformly to $r - \alpha$ as they tends to infinity, we may find L such that if $y > L$, then $z_i(\tau, y, \eta) \geq u_0$ for $i = 1, 2$.

We define

$$z_2^\tau(y, \eta) := z_2(y + \tau, \eta).$$

Since z_2 converges locally uniformly to $r - \alpha$ as y tends to infinity, we may find τ_0 sufficiently large that $z_2^{\tau_0} > z_1$ on the set

$$P_L = \{(y, \eta) \in P : 0 < y < L\}.$$

We claim that $z_2^{\tau_0} \geq z_1$ on P . If not, let $\psi = z_2^{\tau_0} - z_1$ and let $G = \{\psi < 0\}$. It is easy to see that $G \subset P \setminus P_L$, by construction. Also, it is easy to check that ψ satisfies

$$-\Delta\psi - c^\infty \cdot \nabla\psi = \underbrace{\left(\frac{\tilde{f}(z_2^{\tau_0}) - \tilde{f}(z_1)}{z_2^{\tau_0} - z_1} \right)}_{:=\hat{f}(y,\eta)} \psi,$$

on the set G . Since ψ is zero on ∂G and since $\hat{f} \leq 0$ by our assumptions on L and u_0 , the maximum principle ensures that $\psi \equiv 0$ on G , which is a contradiction. Hence, we have that $z_2^{\tau_0} \geq z_1$ on P .

Let

$$\bar{\tau} = \inf\{\tau : z_2^\tau \geq z_1 \text{ on } P\},$$

and notice that $\bar{\tau} \leq \tau_0$. By continuity, it follows that $z_2^{\bar{\tau}} \geq z_1$. We claim that $\bar{\tau} = 0$, and we proceed by supposing the opposite, that is $\bar{\tau} > 0$. There are two cases: either $\inf_{P_L} (z_2^{\bar{\tau}} - z_1) > 0$, or $\inf_{P_L} (z_2^{\bar{\tau}} - z_1) = 0$.

We handle the former case first. In this case, elliptic regularity ensures that z_1, z_2 are uniformly Lipschitz continuous, and that we may then decrease $\bar{\tau}$ to a positive constant $\bar{\tau}' < \bar{\tau}$ and preserve the fact that $z_2^{\bar{\tau}'} \geq z_1$ on P_L . Arguing as above, this implies that $z_2^{\bar{\tau}'} \geq z_1$ on P . This is contradicts the definition of $\bar{\tau}$.

Now we handle the latter case. Assume that $\inf_{P_L} (z_1^{\bar{\tau}} - z_2) = 0$. Then there exists a sequence of points $(y_k, \eta_k) \in P_L$ such that $z_1^{\bar{\tau}}(y_k, \eta_k) - z_2(y_k, \eta_k)$ tends to zero. Defining

$$\psi_{1,k}(y, \eta) = z_1(y + y_k, \eta + \eta_k), \quad \psi_{2,k}(y, \eta) = z_2^{\bar{\tau}}(y + y_k, \eta + \eta_k).$$

By elliptic regularity, we may, taking a subsequence if necessary, find $\bar{\psi}_i$ which are the local limits of $\psi_{i,k}$ as k tends to infinity. In addition, y_k converges to some \bar{y} since $(y_k, \eta_k) \in P_L$ implies that y_k is bounded. Hence we have that $\bar{\psi}_i$ satisfy (5.1) on P_L and satisfy that

$$\bar{\psi}_1(0, 0) = \bar{\psi}_2(0, 0).$$

By the maximum principle, this implies that $\bar{\psi}_1 \equiv \bar{\psi}_2$ on P_L . On the other hand, since $\bar{\tau} > 0$, we have that, $\psi_2(y, \eta)$ is positive for $y = -\bar{y}$ while $\psi_1(y, \eta)$ is zero for $y = -\bar{y}$. This is a contradiction.

Hence, it must hold that $\bar{\tau} = 0$. By the definition of $\bar{\tau}$, this implies that $z_2 = z_2^{\tau=0} \geq z_1$. This contradicts our original assumption that $z_2(y_0, \eta_0) < z_1(y_0, \eta_0)$. This finishes our proof. \square

With lemma 5.1 in hand, we may now conclude the proof lemma 4.1.

Proof of lemma 4.1. Suppose that this is not true. Then there exist a sequence δ_k tending to 0 as k goes to infinity and a sequence c_k^∞ such that

$$\|c_k^\infty\| \leq \delta_k$$

and functions z_k^+ and z_k^- solving (4.7) and (4.8) respectively which satisfy

$$\partial_n z_k^+(0, 0) \leq \partial_n z_k^-(0, 0). \quad (5.3)$$

By elliptic regularity theory, we may take local uniform limits to obtain that z_k^+ and z_k^- converge to z_∞^+ and z_∞^- , respectively, which are the unique solutions to (4.7) and (4.8) with $c^\infty = 0$.

Rotating if necessary, we may now assume that $\hat{v} = (1, 0)$. Using lemma 5.1, it is easy to see that z_∞^+ and z_∞^- depend only on the y -variable. It is easily checked that

$$(\forall u > 0) \quad f_r(\alpha + u) \leq -f_r(\alpha - u).$$

Hence, we may use a sliding technique [5] (see also lemma 5.1 below) to show that $z_\infty^+ > z_\infty^-$. Finally, the Hopf Lemma implies that $\partial_n z_\infty^+ > \partial_n z_\infty^-$, which contradicts (5.3). This finishes the proof. \square

The following lemma addresses the issue of uniqueness for the steady problem (3.4) on the bounded ellipse \mathcal{E}_Λ . While we expect uniqueness to hold in this setting, we are unable to prove it because f_r need not satisfy the condition that $f_r(\alpha + u)/u$ that is usually used for uniqueness results of this type. As such, we settle for a type of asymptotic uniqueness, stated below.

Lemma 5.2. *For any $\epsilon > 0$, there exists Λ_ϵ such that if $\Lambda \geq \Lambda_\epsilon$ any two positive solutions to (3.4) must be ϵ -close in the L^∞ norm.*

Proof of lemma 5.2. Suppose the opposite, that there is a positive constant ϵ , a sequence of Λ_k tending to infinity, and two sequences of functions $\varphi_{1,k}$ and $\varphi_{2,k}$ which both solve (3.4) such that $\|\varphi_{1,k} - \varphi_{2,k}\|_\infty \geq \epsilon$. Then we may find a sequence of points (y_k, η_k) such that $\varphi_{1,k}(y_k, \eta_k) \geq \varphi_{2,k}(y_k, \eta_k) + \epsilon$. We may select (y_k, η_k) to be a local maximum of $\varphi_{1,k} - \varphi_{2,k}$.

Now define functions

$$\tilde{\varphi}_{i,k}(y, \eta) = \varphi_{i,k}(y + y_k, \eta + \eta_k) \quad \text{for } i = 1, 2.$$

By elliptic regularity, it follows that $\tilde{\varphi}_{i,k}$ converge, along a subsequence, if necessary, locally uniformly to $\tilde{\varphi}_i$.

There are two cases to consider here: either (y_k, η_k) remains a finite distance from the boundary of B_{Λ_k} or it does not. The latter cannot happen due to lemma 3.1. Hence it follows that $\tilde{\varphi}_i$ solve (3.4) on a half-space

$$P = \{(y, \eta) : (y + y_\infty, \eta + \eta_\infty) \cdot \hat{v} > 0\}$$

for some unit vector \hat{v} and some translation (y_∞, η_∞) , with Dirichlet boundary conditions on ∂P . From lemma 5.1, we know that (3.4) has a unique positive solution on P . From this, it follows that $\tilde{\varphi}_1 = \tilde{\varphi}_2$. This contradicts the fact that $\tilde{\varphi}_1(0, 0) \geq \tilde{\varphi}_2(0, 0) + \epsilon$. This contradiction finishes the proof of the claim. \square

Lastly, we need one more ingredient in order to prove lemma 3.3. This is a uniform lower bound to v^\pm to ensure that when taking limits in the arguments, we do not lose positivity of v^\pm .

Lemma 5.3. *There exists Λ_0 and λ_0 such that if $\Lambda \geq \Lambda_0$ and $\lambda \geq \lambda_0$, then v^+ and v^- are uniformly positive for any subset K of \mathcal{E} and \mathcal{A} , respectively. Moreover, the lower bound may be chosen in such a way to depend only on the distance between the subset K and the boundary $\partial\mathcal{E}$ and $\partial\mathcal{A}$, respectively.*

Proof of lemma 5.3. This follows easily by using the time dependent eigenvalues of Lemmas 5.1 and 5.2 from [12] along with the strategy from lemma 3.1. As such we omit the proof. \square

We now finally tackle the convergence result of lemma 3.3.

Proof of lemma 3.3. Before we begin, we point out that, by parabolic regularity, it is enough to show that v^\pm converges to φ^\pm uniformly in L^∞ . In addition, we prove the claim for v^+ and φ^+ , but the proof is identical for v^- and φ^- .

Fix $\epsilon > 0$. Choose Λ_ϵ large enough that we may apply lemma 5.2 to get that all non-trivial solutions to (3.4) are within $\epsilon/4$ in the L^∞ norm.

Now we proceed by contradiction. Namely, we assume that there exists $y_k, \eta_k, \lambda_k, T_k$ and $t_k \in [0, T_k]$ such that λ_k and T_k tend to infinity and such that

$$|v^+(t_k, y_k, \eta_k) - \varphi^+(y_k, \eta_k)| \geq \epsilon.$$

Define $v_k(t, \cdot) = v^+(t + t_k, \cdot)$.

By the compactness of \mathcal{E} , we have that (y_k, η_k) tends, along a sub-sequence if necessary, to a point $(\bar{y}, \bar{\eta})$. In addition, lemma 5.3 ensures that v_k is uniformly positive on any compact subset of E .

There are two cases: either t_k is bounded or not. If it is bounded, then the choice of initial conditions for v^+ along with parabolic regularity, see e.g. [25], implies that v_k converges to φ^+ . Hence it must be that t_k tends to infinity.

In this case, it is easy to check that v_k^+ falls within $3\epsilon/4$ of a steady state of (3.4). Indeed, consider the limit $v_\infty^+(t, y, \eta)$. First, notice that this must solve the parabolic analogue of (3.4). Second, notice that, for any $t_0 > 0$,

$$w_0(y, \eta) \leq v_\infty(-t_0, y, \eta)$$

for a positive lower bound w_0 , independent of t_0 , given by lemma 5.3. Using the linearized equation for v_∞ it is clear that we may find $\underline{w}_0 \leq w_0$ which is a super-solution to the related elliptic problem (3.4). Letting \underline{w} be the solution to the parabolic analogue of (3.4) starting from \underline{w}_0 we have that

$$\underline{w}(t_0, y, \eta) \leq v_\infty(0, y, \eta)$$

by the maximum principle. By our choice of initial conditions, it must be that $\underline{w}_\tau > 0$ for all times and for all y and η . By the boundedness of \underline{w} , it follows that \underline{w}_τ tends uniformly to zero and hence, to a solution of eq. (3.4). We may similarly find an upper bound for $v_\infty(0, y, \eta)$ in terms of a non-trivial solution of eq. (3.4). Hence, choosing t_0 large enough and applying lemma 5.2 with the choice $\epsilon' = \epsilon/8$, we have that v_∞ is within $\epsilon/4$ of a steady state.

Applying lemma 5.2 again implies that v^+ and φ^+ are within $\epsilon/2$, using again our choice of Λ above. However, this contradicts our assumption that $|v^+(0, \bar{y}, \bar{\eta}) - \varphi^+(\bar{y}, \bar{\eta})| \geq \epsilon$, finishing the proof. □

References

- [1] C.D. Thomas A.D. Simmons. Changes in dispersal during species range expansions. *The American Naturalist*, 164(3):378–395, 2004.
- [2] M. Alfaro. Slowing allee effect vs. accelerating heavy tails in monostable reaction diffusion equations. submitted. <http://arxiv.org/abs/1505.04626>.
- [3] A. Arnold, L. Desvillettes, and C. Prévost. Existence of nontrivial steady states for populations structured with respect to space and a continuous trait. *Commun. Pure Appl. Anal.*, 11(1):83–96, 2012.
- [4] O. Bénichou, V. Calvez, N. Meunier, and R. Voituriez. Front acceleration by dynamic selection in fisher population waves. *Phys. Rev. E*, 86:041908, 2012.
- [5] H. Berestycki and L. Nirenberg. On the method of moving planes and the sliding method. *Boletim da Sociedade Brasileira de Matemática - Bulletin/Brazilian Mathematical Society*, 22(1):1–37.
- [6] Henri Berestycki, François Hamel, and Grégoire Nadin. Asymptotic spreading in heterogeneous diffusive excitable media. *J. Funct. Anal.*, 255(9):2146–2189, 2008.
- [7] J. Berestycki, É. Brunet, J.W. Harris, S.C. Harris, and M.I. Roberts. Growth rates of the population in a branching Brownian motion with an inhomogeneous breeding potential. *Stochastic Process. Appl.*, 125(5):2096–2145, 2015.
- [8] N. Berestycki, C. Mouhot, and G. Raoul. Existence of self-accelerating fronts for a non-local reaction-diffusion equations. <http://arxiv.org/abs/1512.00903>.
- [9] E. Bouin and V. Calvez. Travelling waves for the cane toads equation with bounded traits. *Nonlinearity*, 27(9):2233–2253, 2014.
- [10] E. Bouin, V. Calvez, N. Meunier, S. Mirrahimi, B. Perthame, G. Raoul, and R. Voituriez. Invasion fronts with variable motility: phenotype selection, spatial sorting and wave acceleration. *C. R. Math. Acad. Sci. Paris*, 350(15-16):761–766, 2012.
- [11] E. Bouin, V. Calvez, and G. Nadin. Propagation in a kinetic reaction-transport equation: travelling waves and accelerating fronts. *Arch. Ration. Mech. Anal.*, 217(2):571–617, 2015.
- [12] E. Bouin, C. Henderson, and L. Ryzhik. Super-linear spreading in local and non-local cane toads equations. submitted. <http://arxiv.org/pdf/1512.07793>.
- [13] X. Cabré, A.-C. Coulon, and J.-M. Roquejoffre. Propagation in Fisher-KPP type equations with fractional diffusion in periodic media. *C. R. Math. Acad. Sci. Paris*, 350(19-20):885–890, 2012.

- [14] X. Cabré and J.-M. Roquejoffre. The influence of fractional diffusion in Fisher-KPP equations. *Comm. Math. Phys.*, 320(3):679–722, 2013.
- [15] N. Champagnat and S. Méléard. Invasion and adaptive evolution for individual-based spatially structured populations. *J. Math. Biol.*, 55(2):147–188, 2007.
- [16] A.-C. Coulon and J.-M. Roquejoffre. Transition between linear and exponential propagation in Fisher-KPP type reaction-diffusion equations. *Comm. Partial Differential Equations*, 37(11):2029–2049, 2012.
- [17] R. Fisher. The wave of advance of advantageous genes. *Ann. Eugenics*, 7:355–369, 1937.
- [18] J. Garnier. Accelerating solutions in integro-differential equations. *SIAM J. Math. Anal.*, 43(4):1955–1974, 2011.
- [19] C. Gui and T. Huan. Traveling wave solutions to some reaction diffusion equations with fractional Laplacians. *Calc. Var. Partial Differential Equations*, 54(1):251–273, 2015.
- [20] F. Hamel and L. Roques. Fast propagation for KPP equations with slowly decaying initial conditions. *J. Differential Equations*, 249(7):1726–1745, 2010.
- [21] J. W. Harris and S. C. Harris. Survival probabilities for branching Brownian motion with absorption. *Electron. Comm. Probab.*, 12:81–92 (electronic), 2007.
- [22] C. Henderson. Propagation of solutions to the Fisher-KPP equation with slowly decaying initial data. *Commun. Math. Sci.*, to appear. <http://arxiv.org/abs/1505.07921>.
- [23] H. Kokko and A. López-Sepulcre. From individual dispersal to species ranges: Perspectives for a changing world. *Science*, 313(5788):789–791, 2006.
- [24] A.N. Kolmogorov, I.G. Petrovskii, and N.S. Piskunov. Étude de l'équation de la chaleur de matière et son application à un problème biologique. *Bull. Moskov. Gos. Univ. Mat. Mekh.*, 1:1–25, 1937. See [28] pp. 105-130 for an English translation.
- [25] N. V. Krylov. *Lectures on elliptic and parabolic equations in Hölder spaces*, volume 12 of *Graduate Studies in Mathematics*. American Mathematical Society, Providence, RI, 1996.
- [26] S. Méléard and S. Mirrahimi. Singular limits for reaction-diffusion equations with fractional Laplacian and local or nonlocal nonlinearity. *Comm. Partial Differential Equations*, 40(5):957–993, 2015.
- [27] A. Mellet, J.-M. Roquejoffre, and Y. Sire. Existence and asymptotics of fronts in non local combustion models. *Commun. Math. Sci.*, 12(1):1–11, 2014.
- [28] P. Pelcé, editor. *Dynamics of curved fronts*. Perspectives in Physics. Academic Press Inc., Boston, MA, 1988.
- [29] B.L. Phillips, G.P. Brown, J.K. Webb, and R. Shine. Invasion and the evolution of speed in toads. *Nature*, 439(7078):803–803, 2006.
- [30] O. Ronce. How does it feel to be like a rolling stone? Ten questions about dispersal evolution. *Annual Review of Ecology, Evolution, and Systematics*, 38(1):231–253, 2007.

- [31] J.-M. Roquejoffre and L. Ryzhik. Lecture notes in a Toulouse school on KPP and probability. 2014.
- [32] J.-M. Roquejoffre and A. Tarfulea. Gradient estimates and symmetrization for fisher-kpp front propagation with fractional diffusion. *preprint*, 2015. <http://arxiv.org/abs/1502.06304>.
- [33] R. Shine, G.P. Brown, and B.P. Phillips. An evolutionary process that assembles phenotypes through space rather than through time. *Proc. Natl. Acad. Sci. USA*, 108(14):5708 – 5711, 2011.
- [34] C. D. Thomas, E .J. Bodsworth, R. J. Wilson, A. D. Simmons, Z. G. Davis, M. Musche, and L. Conradt. Ecological and evolutionary processes at expanding range margins. *Nature*, 411:577 – 581, 2001.
- [35] O. Turanova. On a model of a population with variable motility. *Math. Models Methods Appl. Sci.*, 25(10):1961–2014, 2015.