



HAL
open science

Genetic subgroup of small ruminant lentiviruses that infects sheep homozygous for TMEM154 frameshift deletion mutation A4 Δ 53

Michael L Clawson, Reid Redden, Gennie Schuller, Michael P Heaton, Aspen Workman, Carol G Chitko-Mckown, Timothy Pl Smith, Kreg A Leymaster

► **To cite this version:**

Michael L Clawson, Reid Redden, Gennie Schuller, Michael P Heaton, Aspen Workman, et al.. Genetic subgroup of small ruminant lentiviruses that infects sheep homozygous for TMEM154 frameshift deletion mutation A4 Δ 53. *Veterinary Research*, 2015, 46 (1), pp.22. 10.1186/s13567-015-0162-7. hal-01290671

HAL Id: hal-01290671

<https://hal.science/hal-01290671>

Submitted on 16 Nov 2016

HAL is a multi-disciplinary open access archive for the deposit and dissemination of scientific research documents, whether they are published or not. The documents may come from teaching and research institutions in France or abroad, or from public or private research centers.

L'archive ouverte pluridisciplinaire **HAL**, est destinée au dépôt et à la diffusion de documents scientifiques de niveau recherche, publiés ou non, émanant des établissements d'enseignement et de recherche français ou étrangers, des laboratoires publics ou privés.

SHORT REPORT

Open Access

Genetic subgroup of small ruminant lentiviruses that infects sheep homozygous for *TMEM154* frameshift deletion mutation A4^Δ53

Michael L Clawson^{1*}, Reid Redden², Gennie Schuller¹, Michael P Heaton¹, Aspen Workman¹, Carol G Chitko-McKown¹, Timothy PL Smith¹ and Kreg A Leymaster¹

Abstract

Small ruminant lentivirus (SRLV) infections of sheep are influenced by genetics on both the host and pathogen sides. Genetic variation in the ovine transmembrane 154 (*TMEM154*) gene associates with infection susceptibility, and distinct SRLV genetic subgroups infect sheep in association with their *TMEM154* diplotypes. In this study, a novel SRLV subgroup was identified that naturally infected sheep with various *TMEM154* diplotypes, including those homozygous for a rare frameshift mutation (A4 delta53), which is predicted to abolish *TMEM154* protein function. Thus, these SRLVs may infect sheep that lack functional *TMEM154*, and may not be restricted by *TMEM154* diplotypes in establishing infections.

Introduction, methods and results

Small ruminant lentiviruses (SRLVs) are genetically diverse retroviruses that infect monocytes, macrophages, dendritic cells, and microglial cells of domestic sheep, goats, and wild ruminants [1-4]. Infections persist for the lifetime of the host, causing chronic inflammation and a slow progression to disease [5,6]. Common symptoms of SRLV infection in sheep include interstitial pneumonia with dyspnea, indurative mastitis, and cachexia [7]. There are no available preventative vaccines or cures for SRLVs, and the disease affects sheep and goats in the U.S. and around much of the world [8-11].

In sheep, there is a strong genetic component to the relative risk of SRLV infection on both the host and pathogen sides [12,13]. On the host side, genetic variation in the ovine transmembrane 154 (*TMEM154*) gene associates with SRLV infection susceptibility [12,14]. The biological function of *TMEM154* is unknown; however, it is predicted to be a type I membrane protein based on its amino acid sequence. Twelve non-synonymous SNPs have been detected in regions of *TMEM154* that encode predicted

leader or extracellular domains of the protein, giving rise to 12 haplotypes that each encode different isoforms (Table 1) [12]. Haplotypes 1, 2, and 3 are the most common haplotypes found in sheep, and all three have an effect on SRLV susceptibility. Sheep with a copy of either haplotype 2 or 3, both of which encode a glutamate amino acid residue at position 35 (E35) of the extracellular portion of *TMEM154*, have an increased risk of SRLV infection. Conversely, sheep homozygous for haplotype 1, which encodes a lysine residue at position 35 (K35), have a decreased risk of infection (Table 1) [12,15].

On the pathogen side, two SRLV subgroups defined by genetic variation within segments of proviral *gag* and *env* genes, associate with alleles of the ovine *TMEM154* E35K polymorphism [13]. SRLV subgroup 1 associates with homozygous and hemizygous *TMEM154* K35 genotypes with the K allele encoded by haplotype 1, and subgroup 2 associates with hemi- and homozygous *TMEM154* E35 genotypes with the E allele encoded by haplotypes 2 or 3 (Table 1) [13]. Thus, some SRLVs have adapted to infect sheep with distinct *TMEM154* E35K genotypes and can influence *TMEM154* E35K susceptibility to infection.

The biology responsible for *TMEM154* E35K associations with SRLV infection susceptibility, and SRLV subgroup associations with *TMEM154* E35K genotypes is unknown. While a portion of *TMEM154* is predicted to

* Correspondence: mike.clawson@ars.usda.gov

¹United States Department of Agriculture (USDA) Agricultural Research Service (ARS), U.S. Meat Animal Research Center (USMARC), State Spur 18D, Clay Center, NE 68933, USA

Full list of author information is available at the end of the article

Table 1 Ovine *TMEM154* haplotypes and their associations with infection susceptibility and SRLV subgroups

Haplotype	Amino acid at position indicated												Allelic effect ^b	SRLV association
	4 ^a	13	14	25	31	33	35	44	70	74	82	102		
1	R	A	L	T	E	D	K	T	N	I	E	I	Less-susceptible	Subgroup 1
2	R	A	L	T	E	D	E	T	I	I	E	I	Highly-susceptible	Subgroup 2
3	R	A	L	T	E	D	E	T	N	I	E	I	Highly-susceptible	Subgroup 2
4	A	P ^c	F ^c	P ^c	R ^c	T ^c	N ^c	W ^c	NA ^d	NA	NA	NA	Unknown	Unknown, can be infected by Subgroup 4 (this study)
6	R	A	L	T	E	D	E	T	N	I	Y	NA	Unknown	Unknown
9	R	A	L	T	E	N	E	T	N	I	E	I	Unknown	Unknown
10	R	A	H	T	E	D	K	T	N	I	E	I	Unknown	Unknown
11	R	A	L	I	E	D	E	T	N	I	E	I	Unknown	Unknown
12 ^e	R	A	L	T	E	D	E	T	N	F	E	I	Unknown	Unknown
13	R	V	L	T	E	N	E	T	N	I	E	I	Unknown	Unknown
14	R	A	L	T	E	D	E	T	N	I	E	T	Unknown	Unknown
15 ^e	R	A	L	T	Q	D	E	T	N	F	E	I	Unknown	Unknown

^aNumbers refer to amino acid positions in [GenBank:HM355886].

^bDoes not account for SRLV subgroups.

^cResult of frameshift mutation at amino acid position 4.

^dNot applicable due to preceding premature stop codon.

^eHaplotype observed in wild sheep.

extend from the host cell into the external milieu, it is not known if *TMEM154* serves as a receptor, or co-receptor for SRLV attachment to the host cell, affects viral processing within the cell, or exit from it, or has a different biological function regarding SRLV infection. It is also not known if genetic variation in proviral *gag* and/or *env* directly causes SRLV subgroups to associate with *TMEM154* E35K genotypes, or is in linkage disequilibrium with causal alleles elsewhere in the SRLV genome. However, given that SRLV subgroups and *TMEM154* E35K genotypes associate with each other through apparent coevolution, *TMEM154* is implicated as having a critical role in SRLV infections, leading us to hypothesize that sheep lacking functional *TMEM154* may be completely resistant to SRLV infection.

TMEM154 A4Δ53 is a frameshift mutation that is predicted to abolish protein function [12]. With leader peptide, the ovine *TMEM154* precursor protein encoded by haplotypes 1, 2, and 3 is 191 amino acids, and yields a mature protein of 161 amino acids once the predicted leader peptide has been removed [12]. *TMEM154* A4Δ53 is part of haplotype 4, and encodes a single nucleotide deletion at amino acid position four of the precursor protein which results in an extensive change of amino acid coding at and downstream of amino acid four, and the first of multiple premature stop codons starting at amino acid position 54 (Table 1). Consequently, a truncated 53 amino acid protein with little homology to other *TMEM154* isoforms results from the mutation, and sheep that are homozygous for *TMEM154* A4Δ53 constitute natural *TMEM154* “knockouts”. Although generally rare, the

TMEM154 A4Δ53 allele has been found in multiple sheep breeds in the U.S., and in sheep from Turkey, Iran, Spain, France, and India [12,16]. Thus, sheep homozygous for *TMEM154* A4Δ53 are distributed throughout multiple geographical regions that may have their own distinct SRLV populations.

As part of a research surveillance program, a flock of approximately 250 sheep at North Dakota State University was sampled for SRLV infection and *TMEM154* diplotypes. The flock was comprised of multiple breeds including Columbia, Dorset, Hampshire, and Katahdin. Members of the flock were approved for research use by the animal care and use committee of the North Central Region-Sustainable Agriculture Research and Education program (Project Number FNC13-929). *TMEM154* diplotypes were scored using a commercially run matrix-assisted laser desorption/ionization-time-of-flight mass spectrometry (MALDI-TOF MS) assay (GeneSeek, Lincoln, NE, USA) [16], and SRLV infection status was determined serologically using a commercially run competitive enzyme linked immunosorbent assay (cELISA), (GeneSeek [17]). Over 50% of the flock was infected, including a Hampshire ewe and a Katahdin ewe that were both *TMEM154* “4,4” diplotypes, and thus homozygous for *TMEM154* A4Δ53 (Table 2).

The MALDI-TOF MS genotyping results for both of the *TMEM154* “4,4” ewes, were confirmed with Sanger sequencing of *TMEM154* DNA and cDNA amplified from their blood. The sequencing was conducted on PCR-generated amplicons of *TMEM154* exons 1 and 2, and *TMEM154* cDNA that was RT-PCR amplified with

Table 2 SRLV-infected sheep sampled for proviral *gag* sequence

Animal ID	Breed	Age	<i>TMEM154</i> diplotype	SRLV <i>gag</i> GenBank #
6004	Dorset	7	1,1	KP120553
7006	Dorset	6	1,1	KP120547
7056	Columbia	6	1,1	KP120545
8344	Columbia	5	1,1	KP120540
9032	Columbia	4	1,1	KP120543
261	Dorset	3	1,2	KP120554
6012	Dorset	7	1,2	KP120549
7028	Dorset	6	1,2	KP120539
9451	Dorset	4	1,2	KP120541
256	Hampshire	3	1,4	KP120542
6542	Hampshire	7	1,4	KP120544
7434	Hampshire	6	1,4	KP120546
8539	Katahdin	5	1,4	KP120555
9322	Hampshire	4	1,4	KP120548
15	Hampshire	3	2,4	KP120552
1150	Hampshire	2	4,4	KP120550
8540	Katahdin	5	4,4	KP120551

previously described reagents and conditions [12,16]. The sequences were produced with an ABI 3730 capillary sequencer (PE Applied Biosystems, Foster City, CA, USA) and assembled into complete contigs with Phred and Phrap [18,19], Polyphred (version 6.10), and Consed software [20], and visually genotyped. By DNA and cDNA sequence, both ewes were homozygous for *TMEM154* A4Δ53 and had *TMEM154* “4,4” diplotypes [GenBank: KP142216 - KP142219]. Thus, the *TMEM154* DNA and corresponding mRNA sequences were identical, with no evidence of alternate splicing of *TMEM154* at the transcript sequence level.

To verify the infection status of the two seropositive ewes with *TMEM154* “4,4” diplotypes, and to characterize the SRLVs they were infected by, nested PCR for SRLV proviral *gag* was conducted on blood DNAs isolated from the two animals (Table 2). Additionally, the PCR was conducted on blood DNAs from 15 seropositive ewes of the same flock with other *TMEM154* diplotypes, to determine if similar SRLVs had infected sheep with or without *TMEM154* “4,4” diplotypes (Table 2). Previously described reagents, conditions, and methods were used for the PCR [13]. The amplicons were Sanger sequenced and assembled with Phred, Phrap, Polyphred (version 6.10), and Consed software [18-20]. All 17 seropositive ewes were confirmed positive for SRLV infection by proviral *gag* amplification and sequence.

In addition to the recent classification of SRLV subgroups 1 and 2 that associate with sheep *TMEM154* E35K

genotypes, SRLVs from around the world have been typed into major genotype groups A-E, and into subtypes within the genotype groups based on *gag* and/or *pol* variation [13,21-23]. To characterize the SRLVs infecting the North Dakota sheep, their *gag* sequences were compared to 1) those of SRLVs from North America and elsewhere in the world, and 2) the top ten closest blast matches to the *gag* sequence from one of the infected *TMEM154* “4,4” ewes in a Neighbor-Net phylogenetic network (Figure 1) and a Neighbor-Joining tree (Figure 2), (see Additional file 1 for sequence information). The network was constructed as SRLVs can have recombinant genomes [24,25], including those that comprise subgroups 1 and 2 [13], and the network accounted for recombinant sequences. The

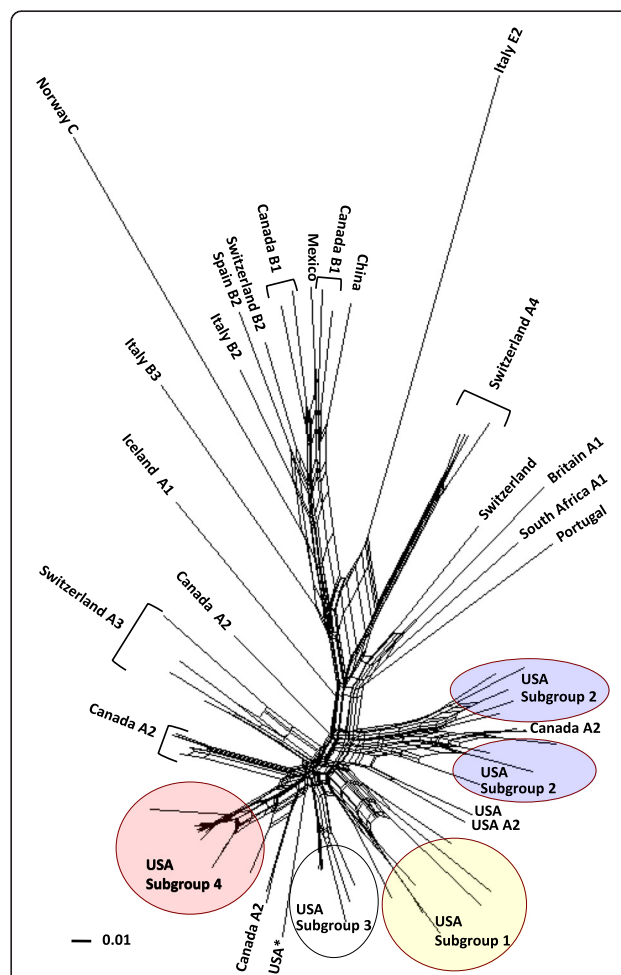
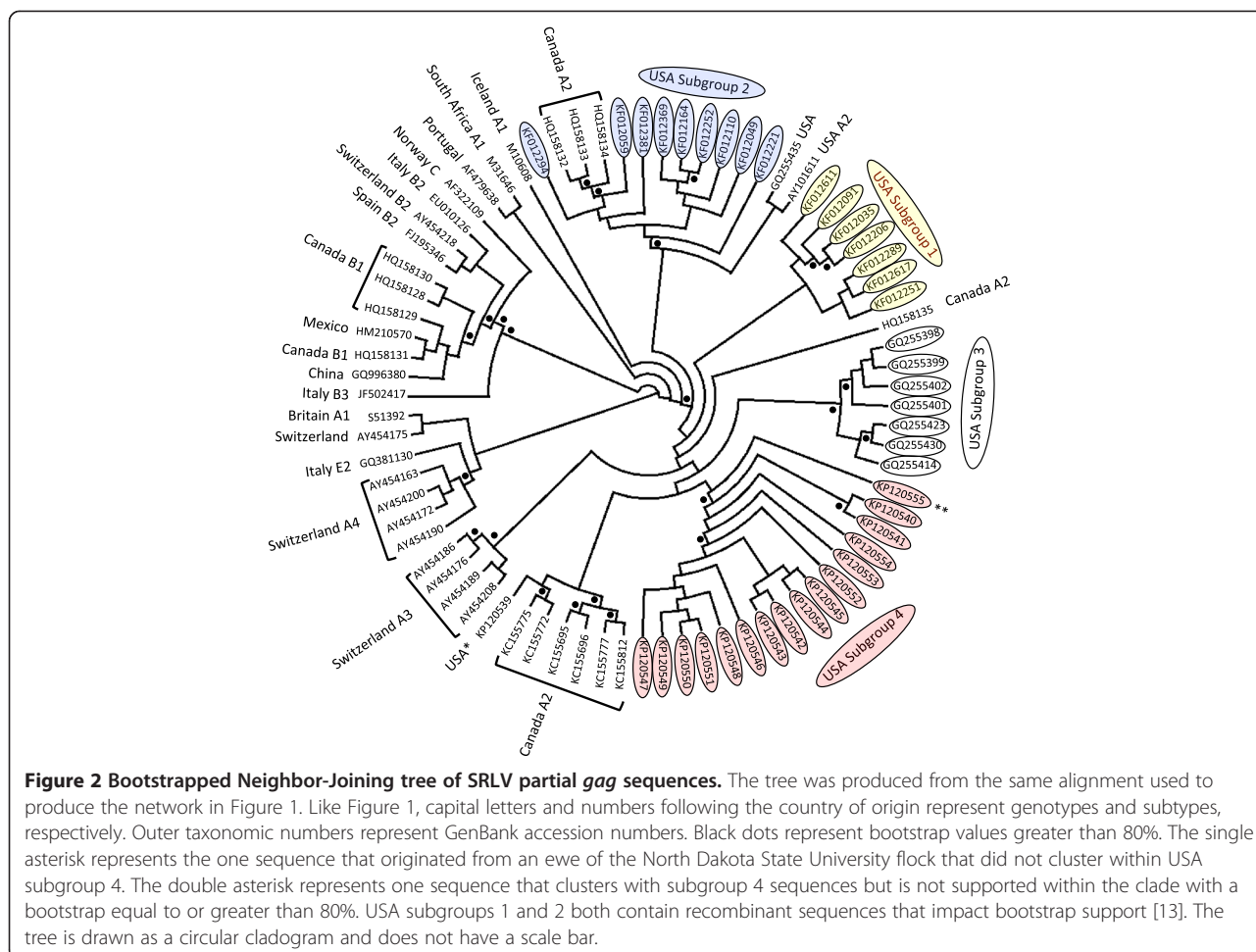


Figure 1 Neighbor-Joining network of SRLV partial *gag* sequences. The sequences were either produced in this study or were available from GenBank, and with amplification primer sites excluded correspond to nucleotide positions 1290–1771 of reference sequence [GenBank: NC_001452]. Capital letters and numbers following the country of origin represent genotypes and subtypes, respectively. The asterisk represents the one sequence [GenBank: KP120539] that originated from a ewe of the North Dakota State University flock that did not cluster within USA subgroup 4. The scale bar represents substitutions per site.



Neighbor-Joining tree was constructed to evaluate clade support with bootstraps, although Neighbor-Joining trees do not account for recombinant sequences. The network was constructed in SplitsTree (version 4.12.3) [26]. The tree was constructed in PHYLIP [27] using the programs Seqboot, Dnadist, Neighbor, and Consense, and viewed in Dendroscope [28]. Both the network and the tree were produced from a *gag* alignment generated with ClustalW in MacVector (version 12.0.6), with an F84 model of substitution and a transition/transversion ratio of two. The tree was bootstrapped with 1000 pseudoalignments. Sequence representatives of SRLV subgroups 1 and 2 were included in the analyses, as were those of what we describe as subgroup 3, which infected a flock of sheep in the Western United States [29], and has not been tested for an association with *TMEM154* genotypes.

Of the North Dakota proviral *gag* sequences, 16 of 17 sequences clustered together in both the Neighbor-Net phylogenetic network and the Neighbor-Joining tree, indicating that a distinct SRLV subgroup infected members of the flock (USA Subgroup 4, Figures 1 and 2). Additionally, within the Neighbor-Joining tree, 15 of 16

sequences within the clade were supported by a bootstrap value greater than 80%, delineating a clear genetic distinction of these strains from all others in the tree as a subgroup (USA Subgroup 4, Figure 2). The *gag* sequences from both of the infected *TMEM154* “4,4” diplotype ewes placed in this subgroup, as did the sequences from ewes with *TMEM154* “1,1”, “1,2”, “1,4”, and “2,4” diplotypes (Figure 2, Table 2). This demonstrates that SRLVs of subgroup 4 are not restricted to infecting only sheep with *TMEM154* “4,4” diplotypes. Both the network and the tree show that USA subgroups 1, 2, 3, and 4 either contain or are flanked by genotype A, subtype A2 sequences. Additionally, the Neighbor-Joining tree has two bootstrap values greater than 80% that collectively support the clustering of all four USA subgroups with A2 sequences, with subtype A3 sequences from Switzerland comprising a related but separate clade (Figure 2). This indicates that all four USA subgroups are members of the A2 subtype.

The one SRLV *gag* sequence from a member of the North Dakota flock that was distinct from subgroup 4 originated from an ewe with a *TMEM154* 1,2 diplotype

that was born in 2007, most likely in South Dakota. This ewe was introduced into the North Dakota flock in 2009. It is possible that she was infected with an SRLV prior to her introduction to the North Dakota flock.

Discussion

Subgroup 4 SRLVs can infect sheep with *TMEM154* “4,4” diplotypes that are homozygous for the *TMEM154* A4A53 mutation, as well as sheep that do not have haplotype 4. This indicates that subgroup 4 SRLVs do not require functional *TMEM154* to infect sheep, and may be able to infect sheep with any *TMEM154* diplotypes. The mechanism(s) or host receptors that subgroup 4 SRLVs use to infect sheep in the absence of functional *TMEM154* are unknown. Additionally, whether or not other SRLV subgroups infect cells in the same manner as subgroup 4 members at low frequency is also unknown. Additional barriers to infection that are independent of the *TMEM154* locus may be required to prevent infection of sheep by subgroup 4 SRLVs.

All four SRLV subgroups that have been identified in the U.S. place within the A2 subtype. SRLV genotype A is highly diverse with 15 subtypes currently known [23]. To better understand the context of ovine *TMEM154* allele associations with SRLV infection susceptibility, it would be interesting to know if SRLV members of other A subtypes, genotypes B-E, and any circulating recombinant forms vary by an association with *TMEM154* alleles, including an ability to infect sheep with *TMEM154* “4,4” diplotypes. Additionally, it would be beneficial to obtain full-length genomic sequences from members of the SRLV subgroups to identify viral alleles that are biologically responsible for *TMEM154* associations, potential interactions, or lack thereof. Ultimately, knowledge at this level could lead to precision control of ovine SRLV infection through genetic management of both the host and the pathogen.

Additional file

Additional file 1: gag sequences used for phylogenetic trees of Figures 1 and 2. Table containing the following information for the *gag* sequences used to construct the phylogenetic trees of Figures 1 and 2: GenBank accession number, genetic subgroup affiliation, phylotype, production in this study, country of origin.

Competing interests

The authors declare that they have no competing interests.

Authors' contributions

Conceived and designed the experiments; MLC, RR, GS, MPH, AW, GPH, CGCM, TPLS, KAL. Performed the experiments; GS. Contributed reagents/materials/analysis tools; MLC, RR, GS, MPH, KAL. Analyzed the results; MLC, RR, GS, MPH, AW, GPH, CGCM, TPLS, Wrote the manuscript; MLC. Revised the manuscript with critical intellectual content; MLC, RR, GPS, MPH, AW, GPH, CGCM, TPLS, KAL. All authors read and approved the final manuscript.

Acknowledgments

This work was supported by the Agricultural Research Service and by funding from the North Central Region–Sustainable Agricultural Research and Education program. We thank Jan Watts for secretarial support. The use of product and company names is necessary to accurately report the methods and results; however, the United States Department of Agriculture (USDA) neither guarantees nor warrants the standard of the products, and the use of names by the USDA implies no approval of the product to the exclusion of others that may also be suitable. The USDA is an equal opportunity provider and employer.

Author details

¹United States Department of Agriculture (USDA) Agricultural Research Service (ARS), U.S. Meat Animal Research Center (USMARC), State Spur 18D, Clay Center, NE 68933, USA. ²Department of Animal Sciences, North Dakota State University, Fargo, ND 58108-6050, USA.

Received: 25 November 2014 Accepted: 4 February 2015

Published online: 05 March 2015

References

1. Leroux C, Cruz J, Mornex J-F (2010) SRLVs: A genetic continuum of lentiviral species in sheep and goats with cumulative evidence of cross species transmission. *Curr HIV Res* 8:94–100
2. Patton KM, Bildfell RJ, Anderson ML, Cebra CK, Valentine BA (2012) Fatal *Caprine arthritis encephalitis virus*-like infection in 4 rocky mountain goats (*Oreamnos americanus*). *J Vet Diagn Invest* 24:392–396
3. Erhouma E, Guiguen F, Chebloune Y, Gauthier D, Lakhal LM, Greenland T, Mornex JF, Leroux C, Alogninouwa T (2008) Small ruminant lentivirus proviral sequences from wild ibexes in contact with domestic goats. *J Gen Virol* 89:1478–1484
4. Ryan S, Tiley L, McConnell I, Blacklaws B (2000) Infection of dendritic cells by the Maedi-Visna lentivirus. *J Virol* 74:10096–10103
5. Pépin M, Vitu C, Russo P, Mornex J-F, Peterhans E (1998) Maedi-visna virus infection in sheep: a review. *Vet Res* 29:341–367
6. Blacklaws BA, Harkiss GD (2010) Small ruminant lentiviruses and human immunodeficiency virus: cousins that take a long view. *Curr HIV Res* 8:26–52
7. Pritchard GC, Dawson M (2000) Maedi-visna. In: Martin WB, Aitken ID (ed) *Diseases of Sheep*, 3rd edition. Oxford: Blackwell Science, Osney Mead, Oxford, UK, pp 187–191
8. Gudnadóttir M, Demosthenous A, Hadjisavvas T (2013) Vaccination delays maedi-visna lentivirus infection in a naturally-infected sheep flock. *BMC Vet Res* 9:16
9. Keen JE, Hungerford LL, Littledike ET, Wittum TE, Kwang J (1997) Effect of ewe ovine lentivirus infection on ewe and lamb productivity. *Prev Vet Med* 30:155–169
10. Reina R, Berriatua E, Luján L, Juste RA, Sánchez A, de Andrés D, Amorena B (2009) Prevention strategies against small ruminant lentiviruses: an update. *Vet J* 182:31–37
11. Clements JE, Zink MC (1996) Molecular biology and pathogenesis of animal lentivirus infections. *Clin Microbiol Rev* 9:110–117
12. Heaton MP, Clawson ML, Chitko-McKown CG, Leymaster KA, Smith TP, Harhay GP, White SN, Herrmann-Hoesing LM, Mousel MR, Lewis GS, Kalbfleisch TS, Keen JE, Laegreid WW (2012) Reduced lentivirus susceptibility in sheep with *TMEM154* mutations. *PLoS Genet* 8:e1002467
13. Sider LH, Heaton MP, Chitko-McKown CG, Harhay GP, Smith TPL, Leymaster KA, Laegreid WW, Clawson ML (2013) Small ruminant lentivirus genetic subgroups associate with sheep *TMEM154* genotypes. *Vet Res* 44:64
14. White SN, Mousel MR, Herrmann-Hoesing LM, Reynolds JO, Leymaster KA, Neibergs HL, Lewis GS, Knowles DP (2012) Genome-wide association identifies multiple genomic regions associated with susceptibility to and control of ovine lentivirus. *PLoS One* 7:e47829
15. Leymaster KA, Chitko-McKown CG, Clawson ML, Harhay GP, Heaton MP (2013) Effects of *TMEM154* haplotypes 1 and 3 on susceptibility to ovine progressive pneumonia virus following natural exposure in sheep. *J Anim Sci* 91:5114–5121
16. Heaton MP, Kalbfleisch TS, Petrik DT, Simpson B, Kijas JW, Clawson ML, Chitko-McKown CG, Harhay GP, Leymaster KA, Consortium ISG (2013) Genetic testing for *TMEM154* mutations associated with lentivirus susceptibility in sheep. *PLoS One* 8:e55490

17. Herrmann LM, Cheevers WP, McGuire TC, Adams DS, Hutton MM, Gavin WG, Knowles DP (2003) Competitive-inhibition enzyme-linked immunosorbent assay for detection of serum antibodies to caprine arthritis-encephalitis virus: diagnostic tool for successful eradication. *Clin Diagn Lab Immunol* 10:267–271
18. Ewing B, Hillier L, Wendl MC, Green P (1998) Base-calling of automated sequencer traces using phred I Accuracy assessment. *Genome Res* 8:175–185
19. Ewing B, Green P (1998) Base-calling of automated sequencer traces using phred II Error probabilities. *Genome Res* 8:186–194
20. Gordon D, Abajian C, Green P (1998) Consed: a graphical tool for sequence finishing. *Genome Res* 8:195–202
21. Shah C, Boni J, Huder JB, H-R. V, Muhlherr J, Zanoni R, Miserez R, Lutz H, Schupbach J: Phylogenetic analysis and reclassification of caprine and ovine lentiviruses based on 104 new isolates: evidence for regular sheep-to-goat transmission and worldwide propagation through livestock trade. *Virology* 2004, 319:12–26
22. Grego E, Bertolotti L, Quasso A, Profiti M, Lacerenza D, Muz D, Rosati S (2007) Genetic characterization of small ruminant lentivirus in Italian mixed flocks: evidence for a novel genotype circulating in a local goat population. *J Gen Virol* 88:3423–3427
23. Kuhar U, Barlič-Maganja D, Grom J (2013) Phylogenetic analysis of small ruminant lentiviruses detected in Slovenia. *Vet Microbiol* 162:201–206
24. L'Homme Y, Leboeuf A, Arseneault J, Fras M (2015) Identification and characterisation of an emerging small ruminant lentivirus circulating recombinant form (CRF). *Virology* 475:159–171
25. Santry LA, de Jong J, Gold AC, Walsh SR, Menzies PI, Wootton SK (2013) Genetic characterization of small ruminant lentiviruses circulating in naturally infected sheep and goats in Ontario, Canada. *Virus Res* 175:30–44
26. Huson DH, Bryant D (2006) Application of phylogenetic networks in evolutionary studies. *Mol Biol Evol* 23:254–267
27. PHYLIP (Phylogeny Inference Package) version 3.69: [<http://evolution.genetics.washington.edu/phylip.html>]
28. Huson DH, Richter DC, Rausch C, Dezulian T, Franz M, Rupp R (2007) Dendroscope: an interactive viewer for large phylogenetic trees. *BMC Bioinformatics* 8:460
29. Herrmann-Hoesing LM, Broughton-Neiswanger LE, Gouine KC, White SN, Mousel MR, Lewis GS, Marshall KL, Knowles DP (2010) Evaluation of a caprine arthritis-encephalitis virus/maedi-visna virus indirect enzyme-linked immunosorbent assay in the serological diagnosis of ovine progressive pneumonia virus in U.S. sheep. *Clin Vaccine Immunol* 17:307–310

Submit your next manuscript to BioMed Central and take full advantage of:

- Convenient online submission
- Thorough peer review
- No space constraints or color figure charges
- Immediate publication on acceptance
- Inclusion in PubMed, CAS, Scopus and Google Scholar
- Research which is freely available for redistribution

Submit your manuscript at
www.biomedcentral.com/submit

