



HAL
open science

Mediterranean water-mass variability in T-S coordinates

Loïc Jullion, Sjoerd Groeskamp, Anne Petrenko, A. M. Doglioli

► **To cite this version:**

Loïc Jullion, Sjoerd Groeskamp, Anne Petrenko, A. M. Doglioli. Mediterranean water-mass variability in T-S coordinates. Ocean Sciences Meeting, Feb 2016, Nouvelle Orleans, United States. 2016. hal-01286527

HAL Id: hal-01286527

<https://hal.science/hal-01286527v1>

Submitted on 11 Mar 2016

HAL is a multi-disciplinary open access archive for the deposit and dissemination of scientific research documents, whether they are published or not. The documents may come from teaching and research institutions in France or abroad, or from public or private research centers.

L'archive ouverte pluridisciplinaire **HAL**, est destinée au dépôt et à la diffusion de documents scientifiques de niveau recherche, publiés ou non, émanant des établissements d'enseignement et de recherche français ou étrangers, des laboratoires publics ou privés.

Mediterranean water-mass variability in Θ - S coordinates

Mediterranean Institute of Oceanography, France
Lamont-Doherty Earth Observatory, USA

L. Jullion, S. GROESKAMP, A. PETRENKO, A. DOGLIOLI



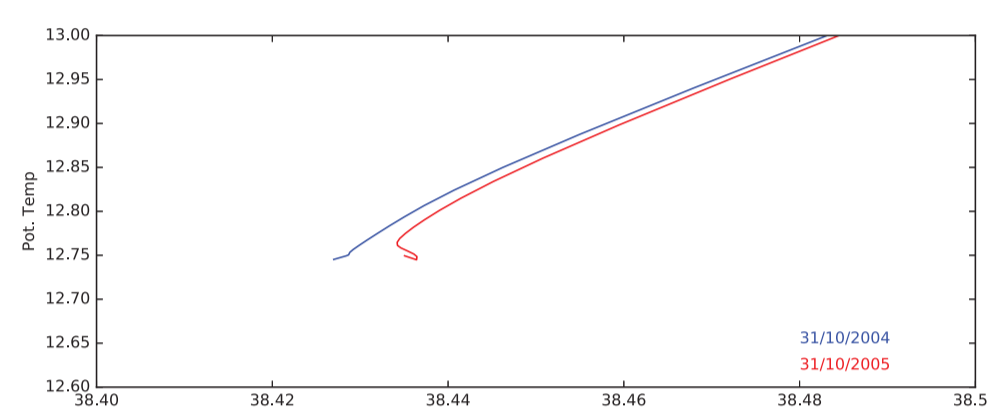
Session PO14F: Ocean Circulation and Biogeochemistry in a Water Mass Framework
Poster No 90863

Motivations

The Mediterranean Sea is a miniature ocean with an overturning circulation but with reduced time and spatial scales.

Two major transient events have driven drastic changes in the thermohaline properties of Mediterranean Bottom Waters:

- In the eastern basin, the Eastern Mediterranean Transient (EMT) resulted in a switch from the Adriatic Sea to the Aegean Sea as the main bottom water formation site in 1991-1992 [1].
- In the western basin, the Western Mediterranean Transition (WMT) resulted in the formation of a new, warmer, saltier bottom water between 200 and 2006 [2].



Change in Θ - S properties in the Western Mediterranean Basin during the intense episode of bottom water formation during the winter 2004-2005

These water-mass anomalies spread across the basin in a few years allowing to investigate the impact of such changes on the Mediterranean Overturning Circulation.

Data and Methods

We use 33 years of output from the regional circulation model NEMO-MED12 model. The model has a horizontal resolution of $\frac{1}{12}^\circ$ (~ 7 km) and 75 vertical levels.

Boundary conditions:

- Exchanges with the Atlantic: Buffer zone from the 2005 World Ocean Atlas for Θ and S .
- Surface: daily evaporation, precipitation, radiative and turbulent heat fluxes, and momentum fluxes from the ARPERA data set
- River runoff and exchanges with the Black Sea included as surface freshwater forcing.

We investigate the contribution from air-sea fluxes and mixing (all mixing processes altogether) to water-mass transformation and variability in the Mediterranean Sea by projecting the model's output in a water-mass framework.

Θ - S framework: Cross-haline and cross-thermal fluxes (see [4] for example):

$$G_\Theta = \frac{\overbrace{1\partial Q}^{\text{air-sea fluxes}}}{c \frac{\partial \Theta}{\partial S}} - \frac{\overbrace{1\partial F_\Theta}^{\text{mixing}}}{c \frac{\partial \Theta}{\partial S}} \quad (1)$$

$$G_S = \frac{\overbrace{\partial S}^{\text{air-sea fluxes}}}{\partial S} - \frac{\overbrace{\partial F_S}^{\text{mixing}}}{\partial S} \quad (2)$$

Cross-haline and cross-thermal fluxes from the water-mass transformation vector \mathbf{J} :

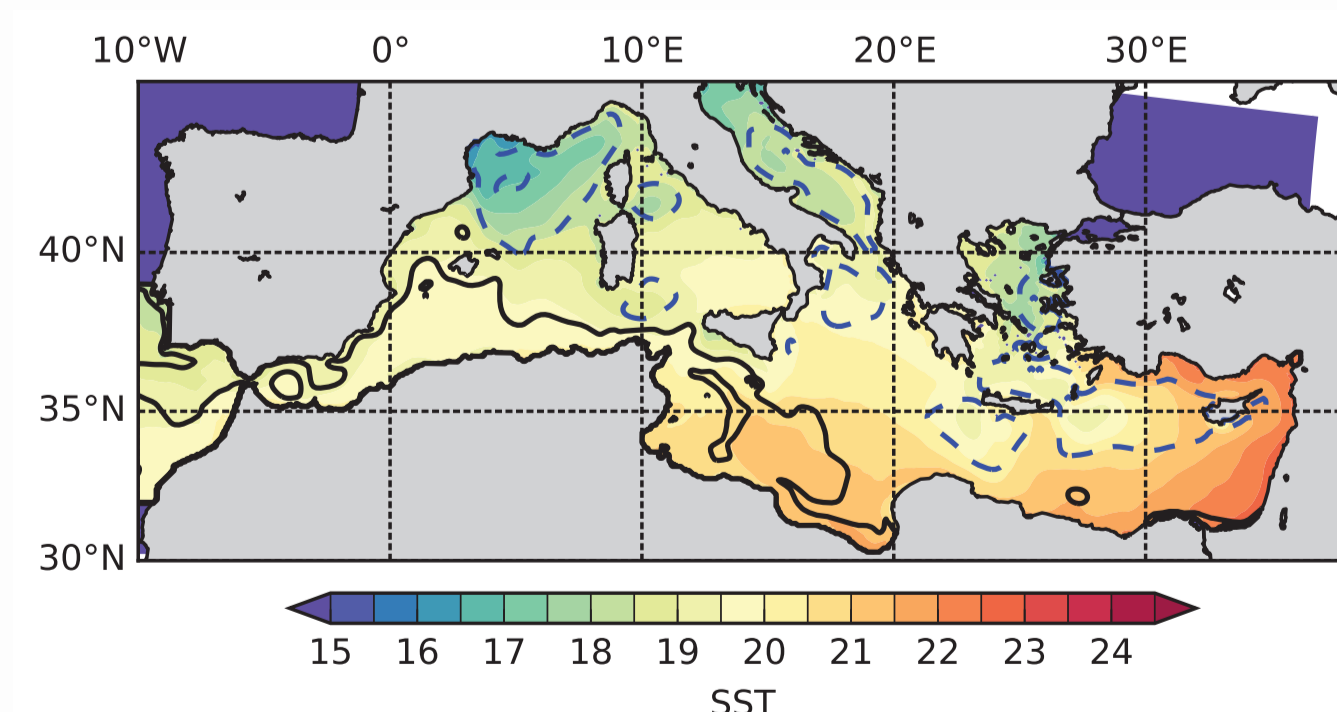
$$\mathbf{J} = \left(\frac{\partial G_S}{\partial \Theta}, \frac{\partial G_\Theta}{\partial S} \right) \quad (3)$$

\Rightarrow We compute G_S and G_Θ from the model's velocity, temperature and salinity fields [3]

\Rightarrow We compute air-sea contributions from the model's air-sea fluxes and deduce the water-mass transformation due to mixing (all mixing processes) as:

$$-\frac{1\partial F_\Theta}{c \frac{\partial \Theta}{\partial S}} = G_\Theta + \frac{1\partial Q}{c \frac{\partial \Theta}{\partial S}} \quad (4)$$

$$-\frac{\partial F_S}{\partial S} = G_S - \frac{\partial S}{\partial S} \quad (5)$$



\rightarrow Negative SSH
 \rightarrow Positive SSH

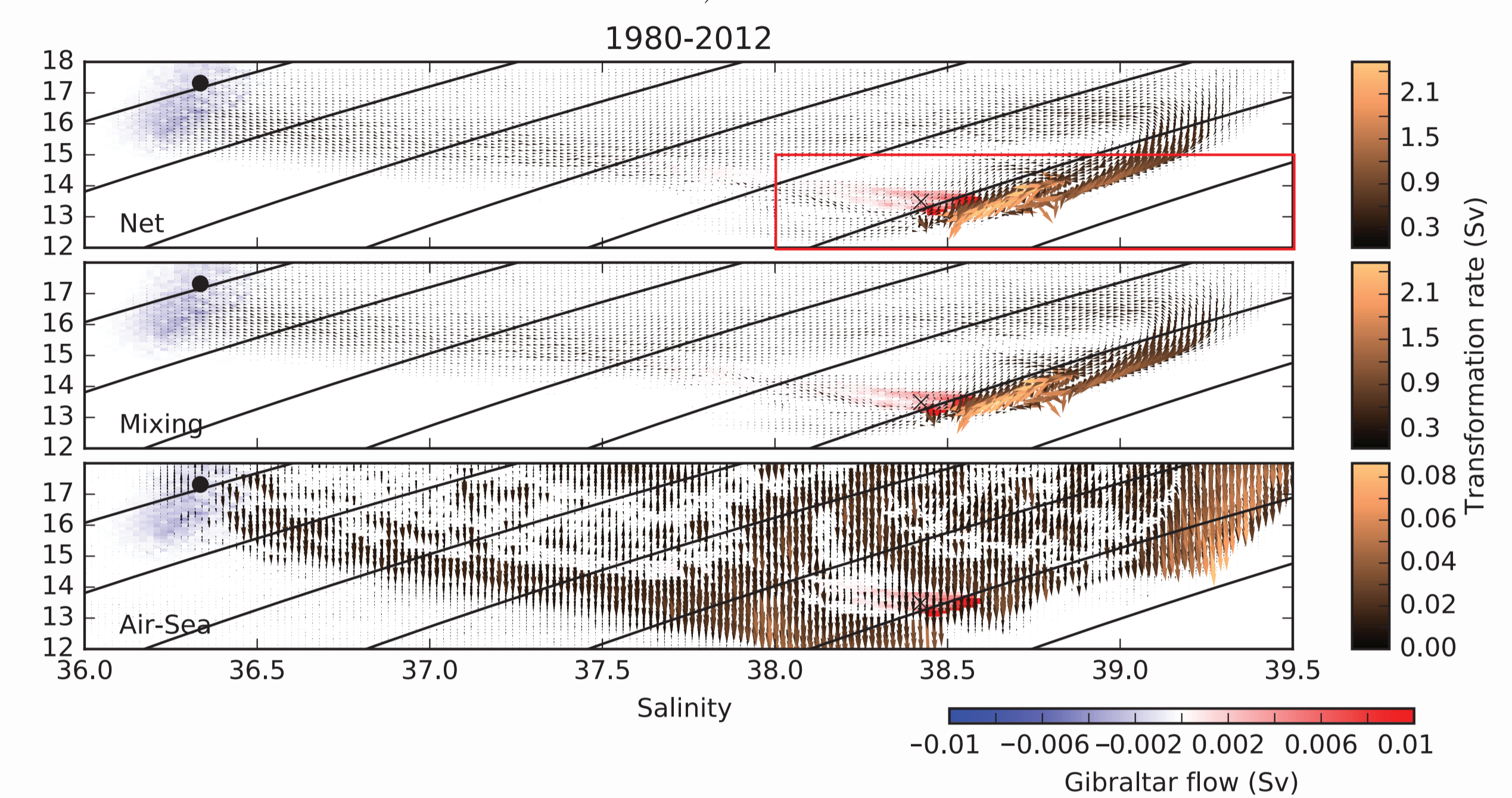
\Rightarrow Mean (1980-2012) Sea Surface Temperature and sea surface height.

\Rightarrow The inflow of Atlantic Water is illustrated by the positive SSH

\Rightarrow Main gyres are shown

water-mass transformation

The net water-mass transformation vectors (\mathbf{J} top) as well as the contribution from mixing (middle) and air-sea fluxes (bottom - **Mind the smaller values on colorbar**) for the entire Mediterranean basin.



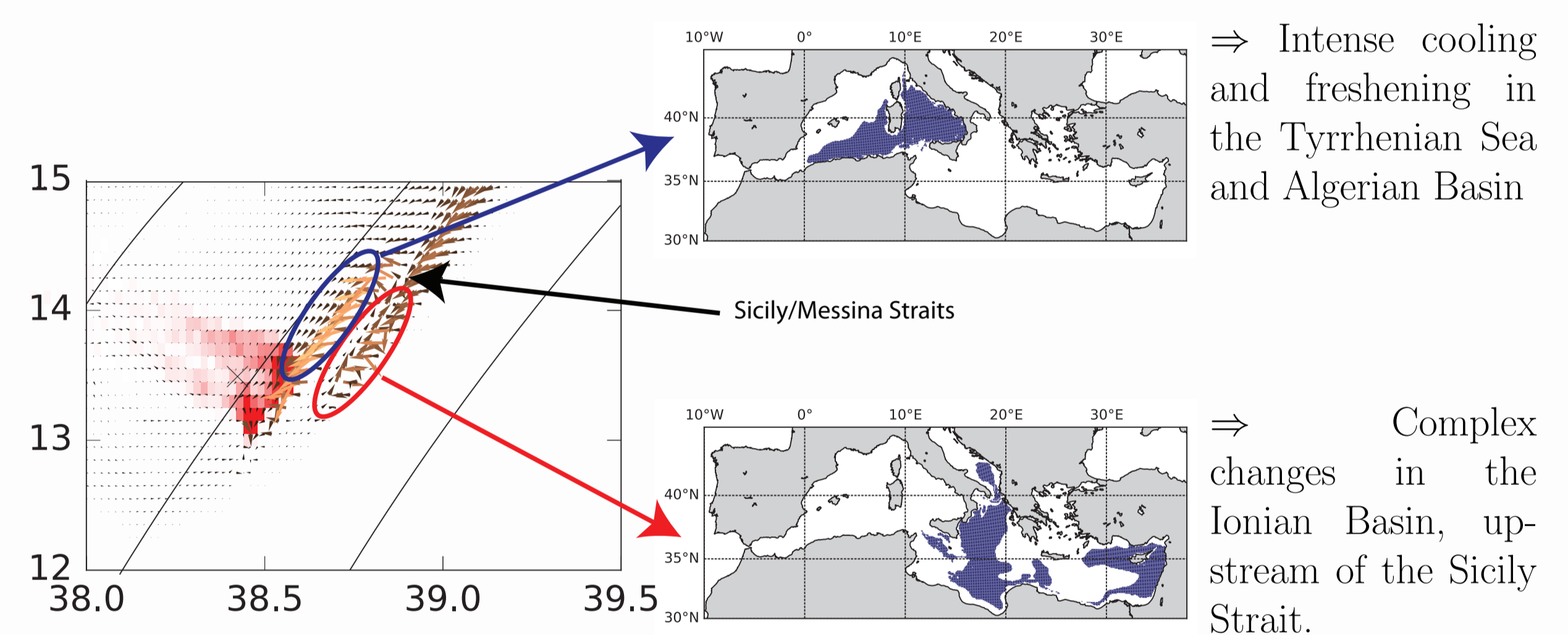
Strong salinification (36 to 39) followed by cooling and freshening.

Mixing seems to be the dominant player.

Air-sea fluxes induce a cooling and salinification particularly in the Eastern Basin.

Intense water-mass transformation in the high salinity water-masses (in the Eastern Basin).

Zoom on the Θ - S range where strong water-mass changes occur and map into geographical space:



Complex water-mass transformations (involving both diapycnal and isopycnal mixing) on both sides of the Sicily Strait to reach Θ - S properties of the outflow at Gibraltar Strait.

Take Home message

\Rightarrow Θ - S framework allows to track the water-mass transformation between inflow and outflow at Gibraltar

\Rightarrow Mixing (isopycnal and diapycnal) plays a dominant role

\Rightarrow Hot spots of water-mass transformations in the Eastern and Tyrrhenian basins.

\Rightarrow Sicily and Messina Straits seem to play a pivotal role where diapycnal mixing occurs.

\Rightarrow Bottom waters span a small Θ - S range

Perspectives

\Rightarrow Investigate changes in water-mass transformation vectors for different time periods (pre/post EMT and WMT)

\Rightarrow Focus on deep water cells

\Rightarrow What are the dominant mixing processes involved?

[1] Roether et al. *Science* **271** (1996) 333

[2] Schroeder et al. *Geophys. Res. Lett.* **35** (2008) L18605

[3] Groeskamp et al. *J. Phys. Oceanogr.* **44** (2014) 1735

[4] Pemberton et al. *J. Phys. Oceanogr.* **45** (2015) 1025

Contact: Loic Jullion
(loic.jullion@mio.osupytheas.fr)