



HAL
open science

Switching field distributions with spin transfer torques in perpendicularly magnetized spin-valve nanopillars

D. B. Gopman, D. Bedau, Stéphane Mangin, E. E. Fullerton, J. A. Katine, A.
D. Kent

► **To cite this version:**

D. B. Gopman, D. Bedau, Stéphane Mangin, E. E. Fullerton, J. A. Katine, et al.. Switching field distributions with spin transfer torques in perpendicularly magnetized spin-valve nanopillars. *Physical Review B: Condensed Matter and Materials Physics (1998-2015)*, 2014, 89 (13), pp.99 - 99. 10.1103/PhysRevB.89.134427 . hal-01282616

HAL Id: hal-01282616

<https://hal.science/hal-01282616>

Submitted on 24 Oct 2017

HAL is a multi-disciplinary open access archive for the deposit and dissemination of scientific research documents, whether they are published or not. The documents may come from teaching and research institutions in France or abroad, or from public or private research centers.

L'archive ouverte pluridisciplinaire **HAL**, est destinée au dépôt et à la diffusion de documents scientifiques de niveau recherche, publiés ou non, émanant des établissements d'enseignement et de recherche français ou étrangers, des laboratoires publics ou privés.



Switching field distributions with spin transfer torques in perpendicularly magnetized spin-valve nanopillars

D. B. Gopman,^{1,*} D. Bedau,² S. Mangin,³ E. E. Fullerton,⁴ J. A. Katine,² and A. D. Kent¹

¹*Department of Physics, New York University, New York, New York 10003, USA*

²*HGST San Jose Research Center, San Jose, California 95135, USA*

³*Institut Jean Lamour, Université de Lorraine, UMR CNRS 7198 Nancy, France*

⁴*CMRR, University of California at San Diego, La Jolla, California 92093, USA*

(Received 6 December 2013; revised manuscript received 7 April 2014; published 28 April 2014)

We present switching field distributions of spin-transfer-assisted magnetization reversal in perpendicularly magnetized Co/Ni multilayer spin-valve nanopillars at room temperature. Switching field measurements of the Co/Ni free layer of spin-valve nanopillars with a 50 nm × 300 nm ellipse cross section were conducted as a function of current. The validity of a model that assumes a spin-current-dependent effective barrier for thermally activated reversal is tested by measuring switching field distributions under applied direct currents. We show that the switching field distributions deviate significantly from the double exponential shape predicted by the effective barrier model, beginning at applied currents as low as half of the zero field critical current. Barrier heights extracted from switching field distributions for currents below this threshold are a monotonic function of the current. However, the thermally induced switching model breaks down for currents exceeding the critical threshold.

DOI: [10.1103/PhysRevB.89.134427](https://doi.org/10.1103/PhysRevB.89.134427)

PACS number(s): 85.75.Bb, 75.60.Jk, 75.76.+j

I. INTRODUCTION

Spin-transfer driven magnetization reversal is of great fundamental interest and has a direct impact on magnetic information storage technologies [1]. Nanostructures with perpendicular magnetic anisotropy are of particular importance to storage applications [2–4]. The all-perpendicular geometry yields reduced critical currents I_c , high uniaxial symmetry, and high spin-torque switching efficiency, i.e., a small ratio of the critical current to energy barrier I_c/U [5–7]. Implementation of competitive spin-transfer devices requires low critical currents while maintaining sufficient thermal stability to suppress thermally activated switching between magnetization configurations.

Understanding the thermal stability of a nanomagnet under spin-transfer torque (STT) is of critical importance to predicting device performance, particularly in the subthreshold current drive regime in which devices can still switch by thermal activation. In the absence of STT, the probability that at finite temperature a nanomagnet's direction of magnetization switches in an applied magnetic field is expected to follow a simple model of thermal activation over an energy barrier [8,9]. A widely used recent model predicts that spin-transfer torques lead to a spin-current-dependent effective energy barrier for thermally assisted transitions [10,11]. This model predicts that a nanomagnet under STT reaches a new steady state that corresponds to an equilibrium distribution over magnetic configurations with an effective potential energy landscape that is modified by the current. The predictions from this model were investigated numerically using Fokker-Planck calculations [12,13] and empirically using dwell-time measurements of in-plane magnetized nanopillar devices [14].

Recent spin-torque switching studies in perpendicularly magnetized nanopillar spin valves have applied this model.

Experimentally obtained energy barrier heights were shown to be much lower than the uniaxial barrier height determined by the entire magnetic free layer volume [15]. Nevertheless, the switching appears well described by thermally overcoming a single energy barrier, whose height is related to an excited magnetic subvolume in the free layer element [16]. Standard measurements probing the effects of spin torques on switching—current-field state diagrams and measurements of the Stoner-Wohlfarth astroid—also appear to agree with the simple effective barrier model [6,17–19].

In order to further test the validity of this effective model under STT, it is important to probe the thermal switching behavior of a spin-torque-driven nanomagnet. We focus on the magnetization reversal characteristics of the Co-Ni free layer (FL) element in all metallic spin-valve (SV) nanopillars with a perpendicularly magnetized polarizing reference layer (RL) composed of Co-Ni and Co-Pt. Spin valves with both the polarizer and the free layer having perpendicular magnetic anisotropy (PMA) are a uniaxial model system, in which all of the contributions (internal and external fields, anisotropy axis, and spin-current axis) are nearly aligned perpendicular to the film plane. Co-Ni multilayered films show high PMA, significant spin polarization, and low Gilbert damping compared to other PMA systems (Co/Pt, Co/Pd, FePt) [20–24]. Furthermore, the all-metal system allows us to generate current densities higher than those possible in magnetic tunnel junctions [25].

In this paper we focus on the influence of STT on thermally assisted reversal. After a brief description of the spin valves studied here, we demonstrate a variety of methods to probe the thermally activated reversal characteristic of a nanomagnet. We begin by introducing standard measurements probing the effects of spin torques on switching—the current-field state diagram. We then present measurements of the coercivity versus field-sweep rate under several direct currents to probe changes in the spin-current-dependent effective energy barrier height. Finally, we focus on statistical measurements of the

*daniel.gopman@physics.nyu.edu

switching field under finite direct currents. Using a switching field model for thermal activation over a single energy barrier, we extract the effective barrier height from switching field distribution measurements at each applied current in order to monitor the evolution of the effective barrier height with current. We have obtained over 5000 switching events at each applied current, which allows us to sample a relatively large number of the statistically rare events at the distribution tails. These statistically rare events are indicators of where deviations from an equilibrium (effective barrier) model first emerge. We use a Gauss quantile plot of the switching field distributions to highlight the data at the distribution tails and demonstrate deviations of our data from the model for the top one percent of the switching probability for currents below the zero-field critical switching current I_c . Furthermore, significant deviations from the equilibrium model emerge after exceeding this current threshold.

II. DEVICE FABRICATION AND ELECTRICAL MEASUREMENTS

The Co/Ni nanopillars studied here are part of an all-perpendicular spin-valve device. Details on materials and sample preparation have been reported previously [6]. The magnetic multilayered structure consists of a Pt(3)/[Co(0.25)/Pt(0.52)] \times 4/Co(0.25)/[Ni(0.6)/Co(0.1)] \times 2 hard reference layer and a [Co(0.1)/Ni(0.6)] \times 2/Co(0.2)/Pt(3) free layer separated by a 4 nm Cu spacer layer and patterned into $50 \times 300 \text{ nm}^2$ ellipse-shaped nanopillars by a process that combines e -beam and optical lithography. Figure 1(a) presents a scanning electron micrograph of a representative $50 \times 300 \text{ nm}^2$ ellipse. Measurements were taken at room temperature and with fields applied within 3 deg of the free layer easy axis. The reference layer magnetization switches for an applied field close to 1 T. Since no fields greater than 0.3 T are applied during the measurements, the reference layer is expected to remain fixed and pointing along the direction of negative magnetic fields, unless otherwise specified.

The magnetization of the free layer is probed indirectly with four-probe measurements of the spin-valve magnetoresistance. Figure 1(b) portrays the measurement geometry and circuit

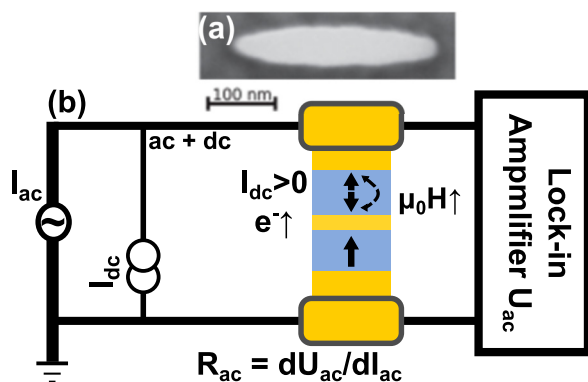


FIG. 1. (Color online) (a) Scanning electron micrograph of a patterned $50 \times 300 \text{ nm}^2$ ellipse-shaped spin-valve nanopillar and (b) magnetotransport measurement setup and definition of current direction.

diagram for measurements of the free layer magnetization orientation. The differential resistance was measured using a small amplitude ac current ($I_{ac} = 100 \mu\text{A rms}$) at a frequency of 10 kHz and lock-in amplifier, with a $300 \mu\text{s}$ time constant. Lock-in data was acquired at a rate of 1 kHz. To avoid significant spin-transfer effects, this ac current was designed to be lower than the room temperature, zero-field critical current, $I_c \approx 5 \text{ mA} \gg I_{ac}$. For experiments under constant dc current, the positive current direction corresponds to electrons flowing from the fixed polarizing layer (unidirectional arrow) to the free layer (bidirectional arrow).

III. STATE DIAGRAM: EFFECT OF SPIN-TRANSFER TORQUES ON COERCIVITY

The current-field state diagram investigates the stability of different spin-valve states under STT from electric currents as well as applied magnetic fields. This diagram reveals the regions of applied fields and currents that exhibit only an antiparallel (AP) or parallel (P) state as well as bistable regions where either AP or P states can be stabilized. Figure 2 illustrates the state diagram of one of our $50 \times 300 \text{ nm}^2$ SV devices alongside the method for generating the diagram from a series of field hysteresis loops under many different applied currents. Figure 2(a) presents a resistance versus perpendicular

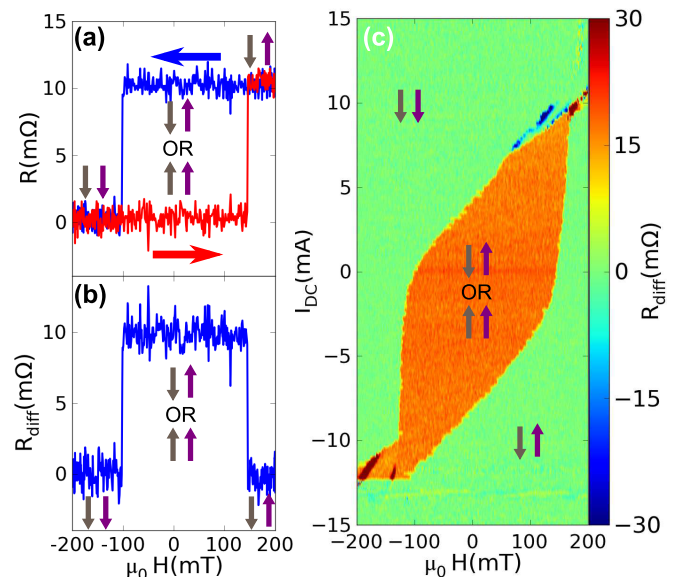


FIG. 2. (Color online) Experimental state diagram of a $50 \times 300 \text{ nm}^2$ ellipse spin-valve device: (a) Red and blue curves show the increasing and decreasing branches of the resistance versus perpendicular applied field hysteresis loop. (R is the resistance deviations from $R_0 = 3.218 \Omega$.) (b) We subtract the resistances of the decreasing branch from the increasing branch $R_{diff}(H) = R_{dec}(H) - R_{inc}(H)$. (c) A series of resistance difference traces from hysteresis loops at applied currents $|I_{dc}| \leq 15 \text{ mA}$ is used to generate an interpolated density map to determine the state diagram. This density map corresponds to the states available to the spin-valve device: Green regions indicate only one state (antiparallel or parallel), which orange regions represent an area of bistability. Vertical arrows illustrate the magnetization orientations of the two layers in each region.

applied field hysteresis loop with a decreasing field (AP \rightarrow P) and an increasing field (P \rightarrow AP) branch. The resistance difference between the AP \rightarrow P and P \rightarrow AP branches at each applied field value is plotted in Fig. 2(b), revealing field ranges with a low resistance difference, indicating that only one state (AP or P) is stable. There is also a region with a substantial resistance difference, indicating a region of bistability. The set of resistance difference traces obtained from field hysteresis loops at a series of currents is interpolated into a density map that is presented as the state diagram in Fig. 2(c). A trend line can be seen along the perimeter between the orange (bistable) region and the green (AP or P) regions. The linear dependence of the switching currents with applied field in a region surrounding zero field can be understood within a modified Néel-Brown law in which the spin current modifies the effective barrier separating AP and P states. This result is consistent with finite temperature calculations of the current-field evolution of the state diagram [26]. It is noteworthy that the effective barrier model is only approximately valid, and its range of applicability is confined to the high barrier regime, which can be modified by the current amplitude. Critical to this study is the effective barrier height before switching. We can estimate the barrier height by considering the measurement time (1 ms) and an approximate attempt time (1 ns). The barrier before switching can be estimated from these two time scales: $\ln(10^{-3}/10^{-9}) \sim 10 \gg 1$. Thus, for the currents used in our study, it appears reasonable to use this approximate model.

The critical switching current at room temperature and zero field, $I_c(H=0)$, is 5 mA for AP \rightarrow P and -7 mA for P \rightarrow AP. The sudden increase in slope dI_c/dH for fields $|\mu_0 H| \gtrsim 100$ mT cannot be understood by a modified Néel-Brown law, but tilts of the applied field relative to the uniaxial axis and higher-order terms in the uniaxial potential energy landscape (e.g., $\sin^{2n} \theta, n \geq 2$) may be important for the origin of the deviations from the predicted linear dependence [17].

IV. FIELD-SWEEP RATE MEASUREMENTS

We can probe changes in the thermal stability of a nanomagnet under STT through variable field-sweep rate measurements. The evolution of the mean switching field versus field-sweep rate is sensitive to the nanomagnet's thermal stability factor $\xi = E_0/k_B T$, where E_0 is the barrier height at zero applied field, k_B is the Boltzmann constant, and $T = 300$ K for our measurements. We assume an Arrhenius-type law for thermal activation $\Gamma(H) = \Gamma_0 \exp(-\xi \varepsilon^\eta)$, where $\varepsilon = (1 - H/H_{c0})$ and $\eta = 1.5$ [27–29] determine the scaling of the thermal stability with field, H_{c0} is the switching field at zero temperature and we assume $\Gamma_0 = 1$ GHz. Then, the cumulative probability that the nanomagnet does not switch under a magnetic field ramped linearly in time ($dH/dt = v = \text{const.}$) from zero up to a field H has the form of a double exponential:

$$P_{\text{NS}}(H) = \exp \left[- \int_0^H \Gamma(H')/v dH' \right]. \quad (1)$$

This thermal activation expression models the experimentally obtained switching field distributions that we will introduce further below, but also yields an approximate expression for

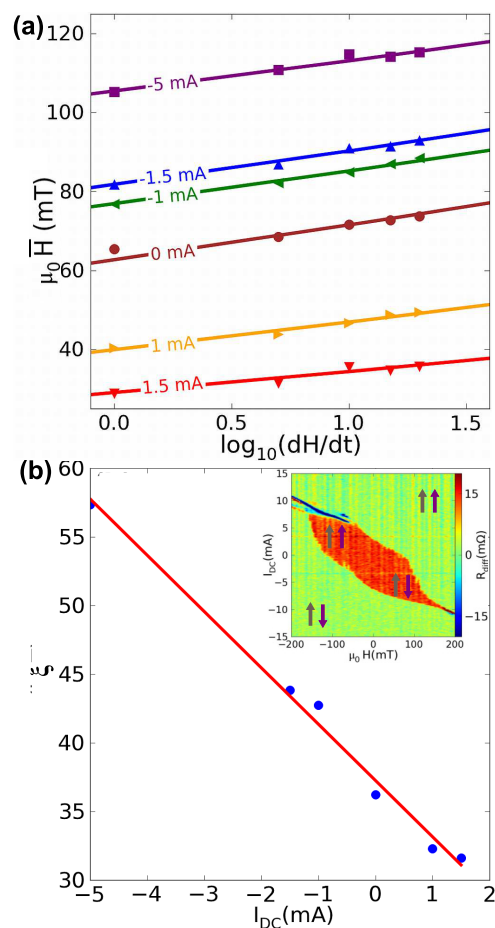


FIG. 3. (Color online) (a) Dependence of the mean switching field ($\mu_0 \bar{H}$) of the AP \rightarrow P transition on field-sweep rate (dH/dt) for a second 50×300 nm² ellipse spin-valve device of the same composition with somewhat different characteristics subjected to several applied dc currents. (b) Evolution of the extracted effective thermal stability parameter (ξ) versus dc current (I_{dc}) obtained from best-fit lines [Eq. (2)] to data in (a). Inset to (b) showing the state diagram for this second device.

the mean switching field for a given field ramping rate v :

$$\bar{H}(v) \cong H_{c0} \left\{ 1 - \left[\xi \ln \left(\frac{\Gamma_0 H_{c0}}{\eta v \xi \varepsilon^{\eta-1}} \right) \right]^{1/\eta} \right\}. \quad (2)$$

We use the above expression to fit the evolution of the mean switching field with sweep rate for a series of direct currents in order to determine the evolution of the thermal stability parameter ξ with current.

We have conducted statistical switching field measurements under STT of multiple spin-valve devices, presenting similar behavior although with varying thermal stability. To better highlight the features general to these devices, we will present the results in this section on variable field-sweep rate measurements on a second spin-valve device of the same size and composition with somewhat different characteristics than the device studied in Fig. 2. Figure 3(a) shows the evolution of the mean switching field for the AP \rightarrow P transition versus the logarithm of the field-sweep rate along with best-fit trendlines fitting the data from Eq. (2). From these trend lines, we have extracted the thermal stability ξ for each applied current. The

evolution of the thermal stability versus applied current is plotted in Fig. 3(b), with the state diagram for this device provided in the inset as comparison to the device studied in Fig. 2. Applying a linear fit to the data set consistent with an effective barrier model [10], we extrapolate a zero-temperature critical switching current $I_{c0} = 9$ mA. This value is consistent with the closing of the bistable region of the state diagram plotted in the inset.

In Fig. 3 we present results on the mean switching field of an AP \rightarrow P transition that agrees with the predictions of an effective barrier model under STT. We will proceed further to offer a more rigorous test to the model through statistical measurements distributions under STT. We will investigate the entire switching field distribution to test the extent to which the data agrees with the switching field model at the distribution tails. In the following section we demonstrate that plotting the switching field distributions on a Gauss quantile scale permits us to better assess the quality of fit to our statistical data at the rare events comprising the tails of the distributions.

V. QUANTILE SCALE PLOTTING OF THE SWITCHING FIELD DISTRIBUTIONS

Figure 4 shows the distributions of switching fields for over 5000 switching field events, AP \rightarrow P, under direct currents of 2.5 mA [Figs. 4(b) and 4(d)] and 5 mA [Figs. 4(a) and 4(c)], for the SV device first introduced in Fig. 2. The switching field distributions in the top half [Figs. 4(a) and 4(b)] are plotted on linear axes for both applied field $\mu_0 H$ and for the cumulative nonswitching probability P_{NS} , while in the bottom half [Figs. 4(c) and 4(d)] we plot P_{NS} on a Gaussian quantile scale. This rescaling permits us to qualitatively assess (a) the double-exponential character of thermal activation [Eq. (1)] giving rise to the asymmetric shape of the distribution (e.g., non-Gauss) and (b) the quality of fitting the rare events at the

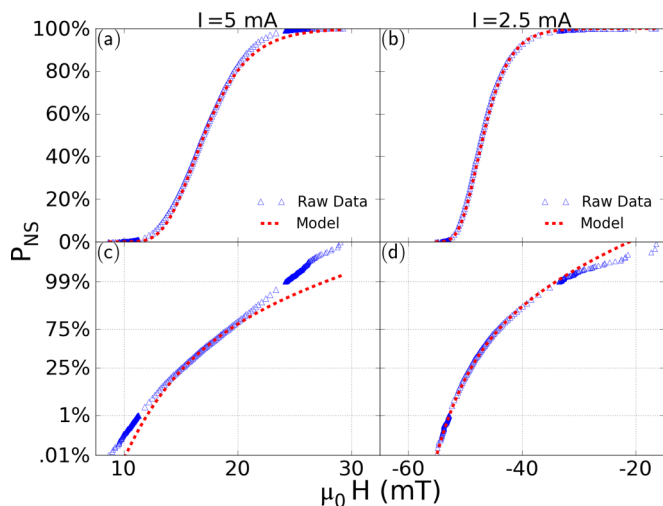


FIG. 4. (Color online) Switching field distributions for AP \rightarrow P transition under constant dc currents [(b) and (d) 2.5 mA and (a) and (c) 5 mA]. (a) and (b) Plotted on a linear y scale. (c) and (d) Plotted on a Gauss quantile y scale rescaled by $Y = \sqrt{2} \operatorname{inverf}(2y - 1)$ to magnify the data sets at the tails of the distributions. This plotting scheme highlights deviations of the data from the thermal activation model at the distribution tails.

tail of our distribution by stretching the y axis around where the tails of the distribution is condensed on a linear scale. We map the y axis representing P_{NS} onto a Gauss-quantile scale using the following rescaling of the y axis:

$$Y = \sqrt{2} \operatorname{inverf}(2y - 1), \quad (3)$$

in which inverf is the inverse error function. For a normal (Gaussian) distribution, the data will be on a line whose slope is equal to the inverse of σ , the standard deviation of the mean. The symmetric shape of a Gauss distribution is inconsistent with switching field distributions, in which thermal activation skews the distribution toward lower fields. This is why our switching field data curves away from an imaginary tangent line at the median ($P_{NS} = 0.5$) due to the double-exponential character of thermal activation.

Figures 4(a) and 4(c) clearly show that the switching field distribution under a 5 mA current (open blue triangles) deviates sharply from the thermal activation model (dashed red line). The deviations appear over a sufficiently large region of the distribution that it is visible even on the linearly scaled axis in Fig. 4(a). However, when we compare the distributions under a 2.5 mA current in Figs. 4(b) and 4(d), the deviations are too subtle to ascertain from the linearly scaled plot in the top right corner. Once we plot our data on the Gauss quantile-scaled y axis, disagreement between data and model at the tails of this distribution becomes clear. This result shows that a deep statistical survey of the switching field reveals problems at high current density and the gradual onset of deviations from our model at the distribution tails.

VI. TESTING THE MODEL: SWITCHING FIELD DISTRIBUTIONS UNDER CONSTANT DC CURRENTS

In this section we will test the scope of the “modified barrier” model by conducting deep statistical measurements of the switching field over a wide range of dc currents. Assuming thermal activation over a single energy barrier, at fixed temperature the cumulative probability to remain in a metastable magnetization state under finite field $\mu_0 H$ is given by the double-exponential expression in Eq. (1). Our previous switching field studies taken in zero dc current were consistent with the single barrier model and serve as a baseline from which to compare switching distributions with finite dc currents [30,31]. In order to test the effective barrier model, we will permit the thermal stability and zero-temperature coercive field to vary in Eq. (1), as spin currents may modify the thermal stability ξ as well as the effective anisotropy field H_{c0} for switching.

Figure 5 shows the distributions of switching fields for 5000 switching events, both AP \rightarrow P and P \rightarrow AP, under direct currents of ± 5 , ± 2.5 , and 0 mA for the first device shown in Fig. 2. Curves to the right of zero magnetic field correspond to P \rightarrow AP transitions and to the left correspond to the AP \rightarrow P transitions. The switching field distributions for the 5000 events at each current are plotted on a Gaussian quantile scale, introduced previously in Sec. V to assess the quality of fitting the rare events at the tails of our distributions.

For the single barrier model we apply to each data set, we observe qualitatively good agreement of the fits to the majority of our measured switching field data. Furthermore, the centers of the distributions are shifted according to the applied currents. This behavior is consistent with the evolution

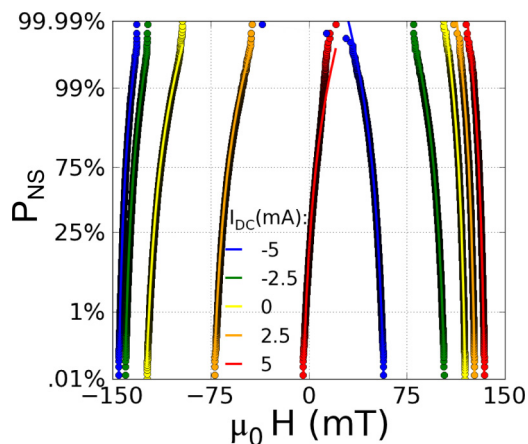


FIG. 5. (Color online) Switching field distributions for 5000 events under direct currents ($I_{dc} = 0, \pm 2.5, \pm 5$ mA) plotted on a Gauss quantile scale. AP \rightarrow P (P \rightarrow AP) distributions fall to the left (right) of the imaginary line at $\mu_0 H = 0$.

of the switching field with applied current presented earlier in the state diagram boundaries. However, we note that the first 1% of AP \rightarrow P transitions for $I_{dc} = 2.5$ and 5 mA occur with lower probability than the model would predict, extrapolating outward from the median. We note that deviations from the model at 5 mA also coincide with the onset of switching for the AP \rightarrow P transition at zero applied field (see Fig. 2).

We extract the best-fit thermal stability factor for each switching field distribution, by fitting the thermal activation model to our data assuming a constant prefactor $\Gamma_0 = 1$ GHz and $v = 100$ mT/s, the linear sweep rate of the applied external magnetic field. The best-fit parameter ξ is shown as a function of applied current in Fig. 6. The dissimilarity between ξ for the AP \rightarrow P and P \rightarrow AP transitions at zero direct current is a common feature in perpendicularly magnetized SV devices and is related to an asymmetry caused by the polarizer dipole field [30]. We note that the trend for small currents is a

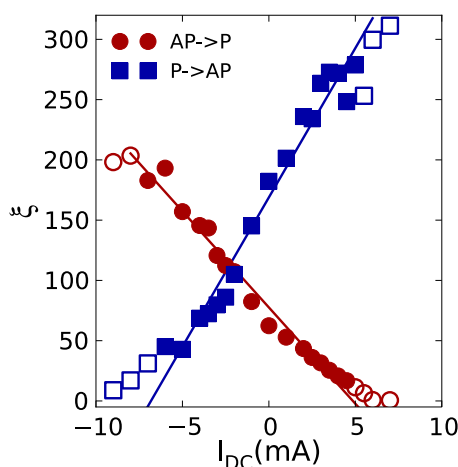


FIG. 6. (Color online) Effective thermal stability ξ versus direct current I_{dc} for $|I_{dc}| < 9$ mA. Thermal stability $\xi = E_0/k_B T$ for AP \rightarrow P (P \rightarrow AP) transitions are referenced to 300 K and plotted as red circles (blue squares). Hollow symbols represent extracted barrier heights for switching distributions that do not agree well with the model.

monotonic decrease in ξ for increasingly positive (negative) currents for the AP \rightarrow P (P \rightarrow AP) transition, which is in good agreement with the effective barrier picture. On the other hand, as the current becomes increasingly negative (positive), the thermal stability for the AP \rightarrow P (P \rightarrow AP) transition levels off. This is in contrast to the effective barrier model, which would predict a steadily increasing ξ with current [10]. Additionally, the deviation in our barrier height ξ scaling with current appears to be consistent with the deviations in the linearity of the barrier height or the deviations in the evolution of the switching rate with current as calculated by Taniguchi *et al.* [32,33]. While the current densities considered in this study fall below the thresholds considered by Taniguchi *et al.* (greater than 80% of the critical current I_c), it is possible that the onset of these deviations occurs for lower current densities in perpendicularly magnetized elements. We denote these deviations from the model with hollow symbols in Fig. 6 to contrast with the switching field distributions that closely follow the monotonic trend line. We also apply hollow symbols for ξ values extracted from switching field distributions that appreciatively deviate from the best model fit. As we will discuss below, this is also a consideration due to changes in the shape of the underlying switching field distribution for the higher current densities.

For sufficiently high current densities, the switching field distributions show clear deviations from the thermal distribution model, whose double-exponential shape is evident in Fig. 5. Figure 7(a) illustrates the switching field distributions for large negative applied currents of -9 , -11 , -11.3 , and -11.5 mA. At higher negative currents ($I_{dc} \leq -11$ mA) the switching field distribution develops a kink (compared with $I_{dc} = -9$ mA), which could indicate a crossover between different competing reversal modes. These competing modes may involve excitation of the polarizer layer and are likely associated with the precessional modes typically seen at the edges of the bistable region of the state diagram, as in Fig. 2(a).

Figure 7(b) illustrates the switching field distributions for large positive applied currents of $+5$, $+5.5$, $+6$, and $+7$ mA. At 5 mA, the shape of the switching field distribution first loses its curvature and the switching rate ($-dP_{NS}/dH$) exceeds the thermal distribution model (dashed line) for fields below the median. Moreover, the switching rate for fields above the median is lower than predicted. This results in apparently linear distributions at 5.5, 6, and 7 mA when plotted on a Gauss quantile scale (compared to solid line), indicating that the switching rates are symmetric for a given deviation from the median switching field $\Delta = |H - H_0|$.

In order to test whether any thermal process with multiple pathways can describe the data, we calculated switching field distributions assuming that multiple switching pathways are available for thermal activation. As it has been seen that spin-transfer torques can redistribute energy across fluctuation modes in a nanomagnet [34,35], competing fluctuation modes could be the origin of a distribution of switching pathways. We begin with a Gaussian distribution of switching rates Γ_i , each with their own energy barrier ξ_i . However, the energy barrier mainly determines the extent to which the P_{NS} curve bends above the knee, which makes it impossible for a distribution of these switching pathways to create a Gaussian switching field distribution.

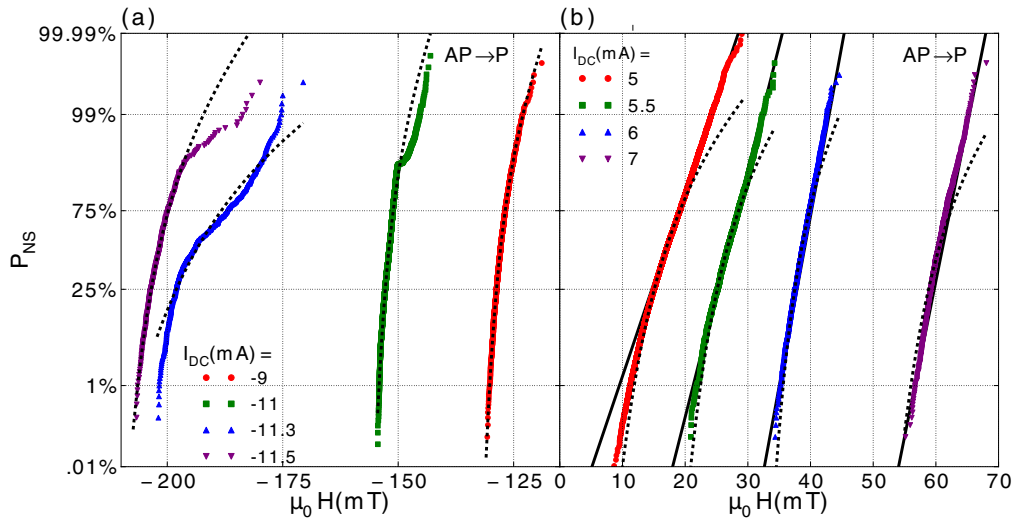


FIG. 7. (Color online) Deviation of the switching field distributions from the predicted double-exponential shape at high currents. Switching distributions plotted on a Gauss quantile scale for (a) $I_{dc} = -9, -11, -11.3, -11.5$ mA reveal a kink for $I_{dc} \leq -11$ mA and (b) $I_{dc} = 5, 5.5, 6, 7$ mA become apparently linear on a Gauss quantile scale. Broken lines in (a) and (b) represent the best-fit thermal activation curve to the data. Solid lines in (b) represent the best-fit Normal distribution to the data.

While the origin of the change in the shape of the switching field distributions is unclear, several factors may play a role at high currents. The nearly symmetric distributions in Fig. 7(b) exhibit a lower switching rate for the low field, high- P_{NS} events than predicted by a thermal activation model, which may indicate that spin-transfer torques suppress the fluctuations that would result in thermal switching. Another possibility is that the large current densities exceeding 10^{11} A/m² may be driving the nanomagnet into an intermediate regime between thermally assisted reversal and deterministic (ballistic) switching in which neither a deterministic switching model nor a thermally assisted switching model is valid [15]. Switching field distributions at these higher currents may be reflecting this intermediate regime.

Recent work by Taniguchi *et al.* demonstrates that the switching rate, attempt frequency, and the scaling are individually sensitive to the magnitude of applied current and/or magnetic field (through field-induced changes in the critical current) [32,36]. While the threshold at which these effects begin to strongly influence the dynamics are quite close to the critical current in the Taniguchi work (focusing on dynamics in an in-plane magnetized element), it may extend to lower currents and fields in a perpendicularly magnetized element, for which the switching dynamic is qualitatively different than in the in-plane geometry.

The double exponential behavior [Eq. (1)] is limited to a regime where the overall switching rate is relatively small. Although experiments are conducted in the long-time (1 ms) regime, rare events at the tails of the switching field distribution may reveal dynamics outside the scope of the double exponential model. However, the breakdown is most significant in the high damping regime (e.g., when the spin-transfer torque and the damping are effectively collinear and parallel to the initial state and the overall switching rate should be suppressed). The origin for the behavior that deviates from the single barrier/double exponential model remains unclear.

In conclusion, we have tested the effective barrier model for spin-transfer-assisted thermally activated reversal of spin-valve nanopillars with perpendicular magnetization. Although the effective temperature model catches the salient features of the average switching behavior seen in state diagram measurements, a closer investigation demonstrates a gradual deviation at the tails of a nanomagnet's switching distribution under increasing spin-transfer torques. This shows that deep statistical measurements of the switching field combined with presentation on a Gauss quantile scale can reveal the onset and degree of deviation of the switching distributions from the thermal activation model. Clear deviations from the thermal switching model become apparent at currents exceeding the zero-field switching current. In particular, the switching rate at the distribution tails is significantly reduced, which may indicate a suppression of the thermal activation by the STT. The deviations suggest a sudden change in the switching process and a breakdown in the validity of a model of thermally induced switching. This could have significant impact on magnetic memory cells in which the bit write error rate in the tails may deviate significantly from the effective barrier model. Also, we demonstrate that the barrier height versus current dependence levels off for large current values. The origin of this as well as the effect of switching out of a dynamic state is not well understood. Nevertheless, our results demonstrate the need for additional investigations on the thermal stability of a nanomagnet under large spin-transfer torques.

ACKNOWLEDGMENTS

This research was supported at NYU by NSF Grants No. DMR-1006575 and No. NSF-DMR-1309202, as well as the Partner University Fund (PUF) of the Embassy of France. Research at UL supported by ANR-10-BLANC-1005 "Friends," the European Project (OP2M FP7-IOF-2011-298060), and the Region Lorraine. Work at UCSD supported by NSF Grant No. DMR-1008654.

- [1] J. A. Katine and E. E. Fullerton, *J. Magn. Magn. Mater.* **320**, 1217 (2008).
- [2] A. D. Kent, *Nat. Mater.* **9**, 699 (2010).
- [3] S. Ikeda, K. Miura, H. Yamamoto, K. Mizunuma, H. D. Gan, M. Endo, S. Kanai, J. Hayakawa, F. Matsukura, and H. Ohno, *Nat. Mater.* **9**, 721 (2010).
- [4] A. Brataas, A. D. Kent, and H. Ohno, *Nat. Mater.* **11**, 372 (2012).
- [5] J. Z. Sun, *Phys. Rev. B* **62**, 570 (2000).
- [6] S. Mangin, D. Ravelosona, J. A. Katine, M. J. Carey, B. D. Terris, and E. E. Fullerton, *Nat. Mater.* **5**, 210 (2006).
- [7] S. Mangin, Y. Henry, D. Ravelosona, J. A. Katine, and E. E. Fullerton, *Appl. Phys. Lett.* **94**, 012502 (2009).
- [8] L. Neel, *Ann. Geophys.* **5**, 99 (1949).
- [9] W. F. Brown, *Phys. Rev.* **130**, 1677 (1963).
- [10] Z. Li and S. Zhang, *Phys. Rev. B* **69**, 134416 (2004).
- [11] J. Z. Sun, *IBM J. Res. Dev.* **50**, 81 (2006).
- [12] D. M. Apalkov and P. B. Visscher, *Phys. Rev. B* **72**, 180405 (2005).
- [13] H. Liu, D. Bedau, J. Z. Sun, E. E. Fullerton, J. A. Katine, and A. D. Kent, *J. Magn. Magn. Mater.* **358**, 233 (2014).
- [14] I. N. Krivorotov, N. C. Emley, A. G. F. Garcia, J. C. Sankey, S. I. Kiselev, D. C. Ralph, and R. A. Buhrman, *Phys. Rev. Lett.* **93**, 166603 (2004).
- [15] D. Bedau, H. Liu, J. Z. Sun, J. A. Katine, S. Mangin, and A. D. Kent, *Appl. Phys. Lett.* **97**, 262502 (2010).
- [16] J. Z. Sun, R. P. Robertazzi, J. Nowak, P. L. Trouilloud, G. Hu, D. W. Abraham, M. C. Gaidis, S. L. Brown, E. J. O'Sullivan, W. J. Gallagher, and D. C. Worledge, *Phys. Rev. B* **84**, 064413 (2011).
- [17] S. Le Gall, J. Cucchiara, M. Gottwald, C. Berthelot, C.-H. Lambert, Y. Henry, D. Bedau, D. B. Gopman, H. Liu, A. D. Kent, J. Z. Sun, W. Lin, D. Ravelosona, J. A. Katine, E. E. Fullerton, and S. Mangin, *Phys. Rev. B* **86**, 014419 (2012).
- [18] D. C. Worledge, G. Hu, D. W. Abraham, J. Z. Sun, P. L. Trouilloud, J. Nowak, S. Brown, M. C. Gaidis, E. J. O'Sullivan, and R. P. Robertazzi, *Appl. Phys. Lett.* **98**, 022501 (2011).
- [19] Y. Henry, S. Mangin, J. Cucchiara, J. A. Katine, and E. E. Fullerton, *Phys. Rev. B* **79**, 214422 (2009).
- [20] G. H. O. Daalderop, P. J. Kelly, and F. J. A. denBroeder, *Phys. Rev. Lett.* **68**, 682 (1992).
- [21] F. J. A. Denbroeder, E. Janssen, W. Hoving, and W. B. Zeper, *IEEE Trans. Magn.* **28**, 2760 (1992).
- [22] J.-L. Beaujour, W. Chen, K. Krycka, C. Kao, J. Z. Sun, and A. D. Kent, *Eur. Phys. J. B* **59**, 475 (2007).
- [23] S. Girod, M. Gottwald, S. Andrieu, S. Mangin, J. McCord, E. E. Fullerton, J. L. Beaujour, B. J. Krishnatreya, and A. D. Kent, *Appl. Phys. Lett.* **94**, 262504 (2009).
- [24] J. M. L. Beaujour, A. D. Kent, D. Ravelosona, I. Tudosa, and E. E. Fullerton, *J. Appl. Phys.* **109**, 033917 (2011).
- [25] D. Bedau, H. Liu, J. J. Bouzaglou, J. Z. Sun, J. A. Katine, S. Mangin, and A. Kent, *Appl. Phys. Lett.* **96**, 022514 (2010).
- [26] R. Zhu and P. B. Visscher, *J. Appl. Phys.* **103**, 07A722 (2008).
- [27] The arguments presented in this paper are valid for $1 \leq \eta \leq 2$, and only have a minor effect on the fitting parameters. $\eta = 1.5$ is taken because this applies to cases in which a magnetic field is applied with a slight offset to the free layer easy axis.
- [28] R. H. Victora, *Phys. Rev. Lett.* **63**, 457 (1989).
- [29] W. T. Coffey, D. S. F. Crothers, J. L. Dormann, L. J. Geoghegan, Y. P. Kalmykov, J. T. Waldron, and A. W. Wickstead, *Phys. Rev. B* **52**, 15951 (1995).
- [30] D. B. Gopman, D. Bedau, S. Mangin, C. H. Lambert, E. E. Fullerton, J. A. Katine, and A. D. Kent, *Appl. Phys. Lett.* **100**, 062404 (2012).
- [31] D. B. Gopman, D. Bedau, G. Wolf, S. Mangin, E. E. Fullerton, J. A. Katine, and A. D. Kent, *Phys. Rev. B* **88**, 100401(R) (2013).
- [32] T. Taniguchi, Y. Utsumi, M. Marthaler, D. S. Golubev, and H. Imamura, *Phys. Rev. B* **87**, 054406 (2013).
- [33] T. Taniguchi, Y. Utsumi, and H. Imamura, *Phys. Rev. B* **88**, 214414 (2013).
- [34] V. E. Demidov, S. Urazhdin, E. R. J. Edwards, M. D. Stiles, R. D. McMichael, and S. O. Demokritov, *Phys. Rev. Lett.* **107**, 107204 (2011).
- [35] A. Slavin and V. Tiberkevich, *IEEE Trans. Magn.* **45**, 1875 (2009).
- [36] T. Taniguchi and H. Imamura, *J. Appl. Phys.* **115**, 17C708 (2014).