



HAL
open science

Whey proteins promote post prandial positive nitrogen balance in a muscle wasting situation but probably for a too short period of time to translate into muscle sparing

Aurélia Revel, Marianne Jarzaguet, Carole Migné, Isabelle Savary-Auzeloux,
Didier Remond, Dominique Dardevet

► **To cite this version:**

Aurélia Revel, Marianne Jarzaguet, Carole Migné, Isabelle Savary-Auzeloux, Didier Remond, et al.. Whey proteins promote post prandial positive nitrogen balance in a muscle wasting situation but probably for a too short period of time to translate into muscle sparing. 8. International Conference on Cachexia, Sarcopenia and Muscle Wasting, Dec 2015, Paris, France. n.p., 2015. hal-01271962

HAL Id: hal-01271962

<https://hal.science/hal-01271962>

Submitted on 9 Feb 2016

HAL is a multi-disciplinary open access archive for the deposit and dissemination of scientific research documents, whether they are published or not. The documents may come from teaching and research institutions in France or abroad, or from public or private research centers.

L'archive ouverte pluridisciplinaire **HAL**, est destinée au dépôt et à la diffusion de documents scientifiques de niveau recherche, publiés ou non, émanant des établissements d'enseignement et de recherche français ou étrangers, des laboratoires publics ou privés.

Why proteins promote post prandial positive nitrogen balance in a muscle wasting situation but probably for a too short period of time to translate into muscle sparing.

Revel Aurélia, Jarzaguet Marianne, Migné Carole, Savary-Auzeloux Isabelle, Rémond Didier, Dardevet Dominique.
INRA, Centre Clermont-Ferrand – Theix, UMR 1019 Unité de Nutrition Humaine, F-63122 Saint-Genès-Champagnelle, France

Background

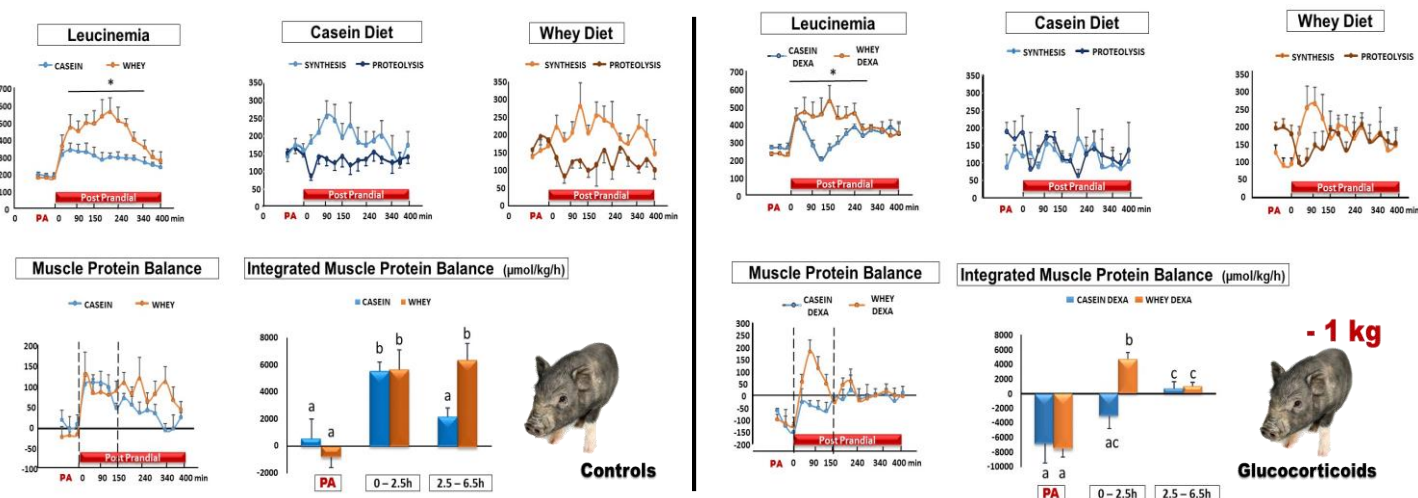
Muscle wasting occurred by an imbalance of muscle protein metabolism. Most of catabolic states are characterized by both an insulin and amino acid resistance which result into a food intake inefficiency to promote positive nitrogen balance during the post prandial period. So far, fast digested proteins (i.e whey) have been shown to be more efficient than casein to promote a stimulation of muscle protein synthesis (PS) in such situations; however, muscle mass is rarely improved.

Our hypothesis is that this stimulation occurs only for a short period of time in the fed state, which remains insufficient to induce a significant increase in muscle mass. To address this point, a protein synthesis and and proteolysis (PRO) kinetic study at the muscle level is required.

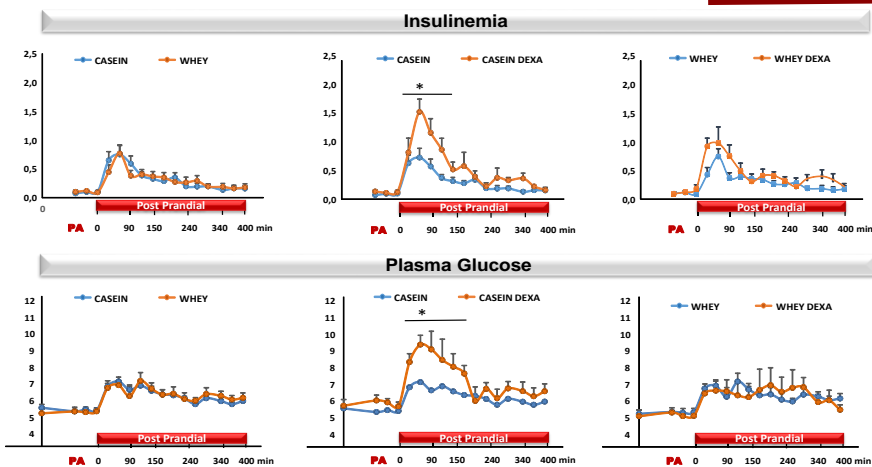
Methods

Adult mini pigs were catheterized into both the femoral artery and vein and infused with ¹³C Phe to assess continuously muscle protein synthesis and proteolysis. The catabolic state was induced by glucocorticoid treatment (8d); both casein and whey effects on PS and PRO were tested over time for 6.5 h.

Results



Our results confirmed that in catabolic situations, a positive muscle protein balance occurred only for a short period of time in the fed state with whey, which probably remains insufficient to induce a significant increase in muscle mass.



Whey protein diet was able to counteract the hyperglycaemia and hyperinsulinemia (insulin resistance) associated with the catabolic state

Conclusions

Whey protein diet was able to decrease the insulin resistance- associated with the catabolic state

Whey proteins allowed to restore a positive nitrogen balance but only for a short period of time

Need of complementary strategies to prolong the duration of the whey-induced anabolism during catabolic states in order to translate in efficient muscle mass sparing