



HAL
open science

Selection of a green manufacturing process based on CAD features

Raoudha Gaha, Bernard Yannou, Abdelmajid Benamara

► **To cite this version:**

Raoudha Gaha, Bernard Yannou, Abdelmajid Benamara. Selection of a green manufacturing process based on CAD features. *International Journal of Advanced Manufacturing Technology*, 2016, 87 (5), pp.1335-1343. 10.1007/s00170-015-7499-y . hal-01271926

HAL Id: hal-01271926

<https://hal.science/hal-01271926>

Submitted on 20 Sep 2016

HAL is a multi-disciplinary open access archive for the deposit and dissemination of scientific research documents, whether they are published or not. The documents may come from teaching and research institutions in France or abroad, or from public or private research centers.

L'archive ouverte pluridisciplinaire **HAL**, est destinée au dépôt et à la diffusion de documents scientifiques de niveau recherche, publiés ou non, émanant des établissements d'enseignement et de recherche français ou étrangers, des laboratoires publics ou privés.

Selection of green manufacturing process based on CAD-features

Raoudha GAHA, Bernard YANNOU and Abdelmajid BENAMARA

Abstract – Environmentally Conscious Manufacturing Process (ECMP) has become an obligation to the environment and to the society itself, enforced primarily by governmental regulations and customer perspective on environmental issues. ECMP involves integrating environmental thinking into new product development. This is especially true in the Computer Aided Design (CAD) phase which is the last phase in the design process. At this stage more than 80% of choices are done. Feature technology (FT), the core of CAD phase, is then used to integrate environmental aspects. Also, integrations realized on CAD systems, such as Computer Aided Manufacturing (CAM), Computer Aided Process Plan (CAPP) and Product Life Management (PLM) are explored to eco-design products. This paper presents a new methodology for the selection of a green manufacturing process based on CAD features and CAD/CAM/CAPP/PLM integrations. First we present an overview of works using FT in CAD phase to reduce the environmental impacts of a manufacturing process. Secondly, we propose an approach based on FT for selecting an ECMP to promote new simple eco-design tool which helps inexperienced eco-designers. Finally, a case study is considered to validate the proposed approach and results are commented.

Keywords: Green manufacturing process / CAD model / LCA / Feature technology / Scenarios.

Nomenclature

CAD = Computer Aided Design
CAPP = Computer Aided Process Planning.
CAM = Computer Aided Manufacturing
EE= Environmental Evaluation
EI(s)= Environmental Impact(s)
FU = Functional Unit

Raoudha GAHA (✉)^a, Bernard YANNOU^b, Abdelmajid BENAMARA^a.

^a Laboratoire Génie Mécanique, Ecole Nationale d'Ingénieurs de Monastir, Université de Monastir, Rue Ibn Aljazzar 5019 Monastir, Tunisie,
raoudha.gaha@gmail.com.

^b Laboratoire Genie Industriel, Ecole Centrale Paris, Grande Voie des Vignes
92290 Chatenay-Malabry, France.

ECMP = Environmentally Conscious Manufacturing Process

EIs = Environmental Impacts

FT = Feature Technology

FUC = Functional Unit Coefficient

IPO = Input-Process-Output

LCA = life Cycle Assessment

LCI = Life Cycle Inventory

SLCA = Simplified Life Cycle Assessment

1. Introduction

Face to the growing awareness of environmental concerns issued from human activities, eco-design aims at offering a comprehensive approach for the products and services development field, especially during the design process [1-2]. However in the late detailed design phase, the designer action field is seriously limited as he/she may handle few degrees of freedom. Manufacturing process is one of these degrees of freedom for CAD designer. In the literature environmentally conscious manufacturing process is widely studied; Ilgin and Gupta classified more than 500 researches on that domain [3]. However, fewer methods have been developed for an environmental evaluation in CAD phase of possible manufacturing process plan scenarios to facilitate decision making. In this phase, features are the core of a geometric model. According to Bidarra et al. [4], modeling features compared to conventional geometric modeling enables the combination of functional and engineering information on the form in a product model. For Ghodous [5], this Feature technology (FT) facilitates the integration between different phases of product development such as design and manufacturing. FT serves also to integrate CAD systems and Eco-design tools such as Life Cycle Assessment (LCA) software. Hence we propose a new methodology based on features to generate possible process plans from one side and to evaluate environmentally each scenario in order to select the greenest one on the other side.

In this paper we start by a state of the art of benefits attempted by the integration between CAD and Computer aided process plans (CAPP) based on FT. Secondly, we present a literature review of works integrating environmental evaluation into manufacturing process. Thirdly, we propose our approach. Finally we apply our methodology into a case study for validation.

2. Feature technology and environmentally conscious manufacturing process: Overview

A feature is a local shape of a product directly related to the manufacturing process. Smith and Dagli [6] define features as high-level design primitives with their attributes, their qualifiers and restrictions which affect the functionality and/or the ability for the product to be manufactured. It was used to reduce the environmental impact playing with different parameters in the production phase. Works, evaluating Environmental Impacts (EIs) of production processes, found in the literature can be divided into three groups; (1) selection of green process planning from different alternatives (2) selection of green process parameters such as cutting fluid or machining tool. The integration of Computer Aided Design (CAD) and Computer Aided Process Planning (CAPP), as realized by Yifei et al. [7], represents a success in generating different possible process plans in real time and their corresponding EIs. It becomes possible to select the most appropriate machining tools with low EIs and also the optimum machining scenario. These benefits are possible thanks to features models that provide the necessary data for a Life Cycle Inventory (LCI).

We present below the most important works that guided us.

2.1. Analysis of CAD/CAPP integration with features

The integration between CAD and CAPP (Computer Aided Process Plan) systems is based on Feature Technology (FT). Many researches are focused on this integration.

Based on feature technology, Jiang et al. propose an automatic process planning system for the quick generation of manufacturing process plans directly from CAD drawings [8]. Features are also used to identify the finish-cut machinable volume by getting the rough-machined part from the final part [9]. Moreover we find in literature different researches which are oriented to elaborate a process sequence in a CAPP for a component based on features. For examples, Yusof and Case [10] established a STEP compliant CAD/CAPP/CAM (Computer Aided Manufacturing) system for turning operations. Features are explored to select an optimal Setup plan machining features of prismatic parts [11]. Kumar presents a methodology that can model any given component using cut features (mimicking machining operation) and produce an optimal choice of machine tools for machining that component [12]. Deja and Siemiatkowski [13] present a conceptual scheme which generates alternative process plans as a network.

2.2. EIs evaluation of process plans and selection of the greenest one

The evaluation of manufacturing environmental impacts is studied in most research works. It is aimed at limiting or avoiding the use of processes which have an impact on ecosystems, human health, etc. Various proposed approaches have been utilized to evaluate the environmentally oriented metrics of manufacturing processes, ranging from experimental investigations to the development of mechanical models. Jiang et al [14] present in their work an overview of these approaches. Then, they propose an environmental performance assessment method for manufacturing process plans. The method developed uses actual values for various environmental measures for the different operations in the plan to form an impact matrix.

Le Borhis et al. [15] developed a methodology based on a predictive model of flow consumption that is defined from the manufacturing path and the part CAD model.

Sheng et al. and Munoz et al. [16-18] analyze, in their respective work, the environmental impact of dissimilar waste streams. They apply a scoring system which evaluates factors such as toxicity, carcinogenesis, irritation, flammability, and reactivity, reducing complexity of processing alternatives through a feature-based approach. A hierarchical part planning strategy for environmentally conscious machining is developed [19], and it is shown that a feature can be machined with different scenarios. The purpose is to choose the least impactful set of machining sequences. Figure 1 shows the example considered by Sheng [16] to demonstrate the influence of changing the order of machining sequences on environmental impacts of a production process. In [16], Sheng decomposes the environmental impact component into "micro" analyses of individual features [19] and "macro" analyses of feature interactions [20]. To evaluate the resources and environment attributes of manufacturing process, Zhang, H. et al. [21] present an IPO (Input-Process-Output) model and an evaluation index system in order to select the greenest process plan.

More than the evaluation of EIs, features are useful for selecting green process planning, such as the multi-objective optimization decision-making framework model of process planning for green manufacturing established by Cao et al. [22] to put forward a new process planning strategy for green manufacturing and to develop a process planning software tool. In 2006, Tan et al [23] developed a new production process which determines a method focusing on sustainable manufacturing. It is based on case-based reasoning, expert systems, and feature technology for designing a new component's

process flow. A sustainable development assessment is the basis of this process flow.

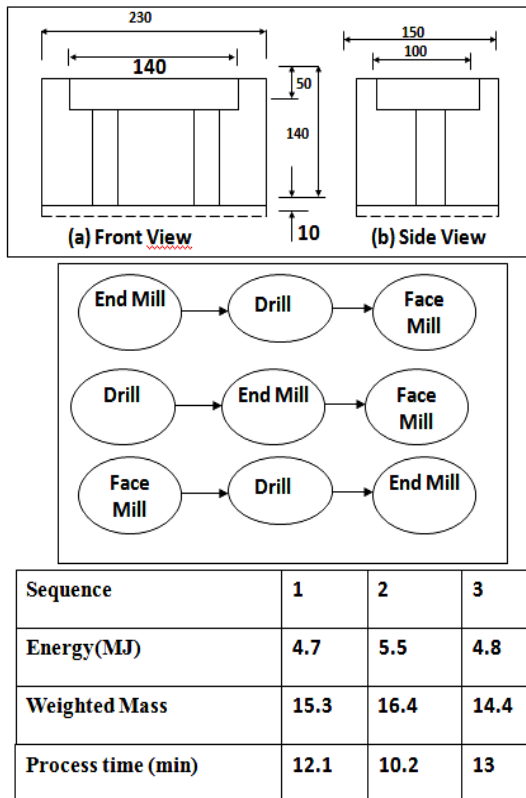


Fig.1 Influence of machining sequences order on the EIs of a part consisting of three types of features: a pocket, a hole and a finished planar face [16]

Zhao et al. [24] also propose a method for environmentally conscious process planning. The method begins with an existing process plan, and then identifies impactful process steps, and associated design features, in terms of manufacturing cost and environmental impact. Alternative processes that can achieve these features are then considered to generate alternative process plans. This might be useful to integrate into CAD-LCA integrated systems to help a designer comparing different alternatives till features attribution. Nawata et al. [25] propose a new life-cycle design system specifically applicable to machined parts. The system automatically generates life-cycle assessment (LCA) feedback for the design process through the effective linkage of life-cycle inventory data with computer-aided design/computer-aided manufacturing (CAD/CAM) data by feature-based modeling. Hence, a determining idea coming out of CAD/CAM/CAPP integration is the possible generation of different machining scenarios.

Each scenario has environmental impacts related to the parameters of the process plan attributed. Feature technology, in CAD phase, can help the designer select, from possible alternatives, the greenest process.

2.3. Selection of green process parameters

Manufacturing process planning is based on a set of parameters such as cutting tool, cutting fluid, or machining tool. Tan, et al [26] used feature technology in selecting the most ecological cutting fluid, and machining tool because they are important parameters in developing green products. In a similar vein, the selection of an ecological machine tool is the aim of Jiang and Zhang's study [27], where they develop the model called Vector Projection Method. This method, based on feature technology, creates a reference index system to justify machine tool selection, by considering resource consumption and environmental impact due to part features which needs an energy input/expenditure (electric mechanic, pneumatic, etc.) to be realized. Estimating the required energy and optimizing it presents a challenge for green manufacture. Possible production energy consumption scenarios in a feature level are studied by Deshpande [28], and assessed through MT Connect standard methodology. Other process parameters, such as finish cut and feed rate generate EIs due to their relation to the part quality. Helu et al. [29], using feature technology, develop a methodology showing that the impact of green machining strategies such as part quality on achieved surface quality is most influenced by the finish cut(s) and feed rate. Improving part quality can also reduce life cycle EIs. Zhang et al. [30], present a study on optimized principles of process parameters (such as cutting depth, cutting velocity and feed rate) for environmentally friendly machining austenitic stainless steel with high efficiency and little energy consumption.

CAD and CAPP integrations may also allow to define more Life Cycle scenarios during the detailed product-process definition of a part or assembling. It is, therefore, necessary to integrate these benefits into CAD-LCA integrated tools to perform environmental assessment in real time and also choose the greenest process plan from existing possible scenarios. These contributions can be accompanied by a green end of life with promotion of design phase disassembly and recyclability.

Figure 2 summarizes benefits achieved from CAD/CAM/CAPP integration by using FT. These benefits confirm the ability to enrich features with required LCA data. In this paper, we are interested in the manufacturing phase of a part life cycle.

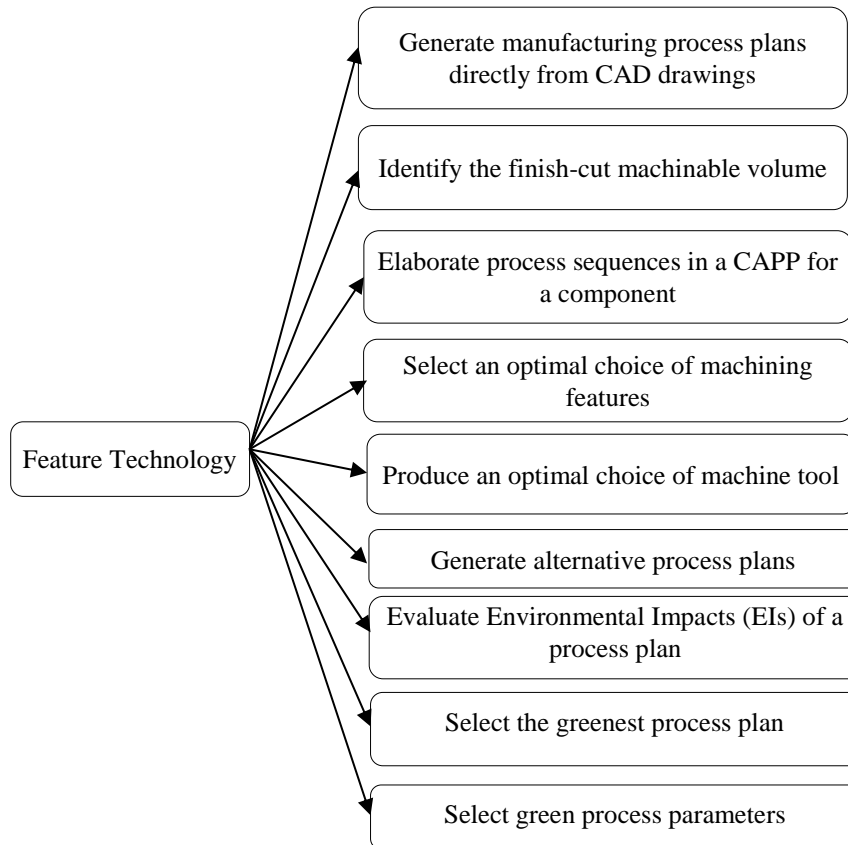


Fig .2 Benefits of CAD/CAM/CAPP integration based on FT

4. Proposed approach

In our methodology we explore feature technology to evaluate the environmental impact of a product manufacturing process from the geometric modeling phase by an LCA tool. In fact, it consists in giving the designer the machining environmental impact of the current CAD model once a feature is attributed. The methodology presented is an algorithm that allows the designer to see the machining environmental impact of each feature chosen in a real time and presents him an optimal scenario in terms of environment by using CAD, CAM, CAPP and PLM systems. These systems can provide many types of product information such as geometric and non geometric (material, tolerances or engineering constraints). CAM and CAPP systems can provide information about manufacturing processes and PLM systems can include the requirements phase, analysis and design stages, manufacturing, product launch, distribution, quality assurance, in-service maintenance and spare parts provisions. Some missing data are included in databases such as those of *EcoInvent* [31] and “*Bilan Produit*” [32] where impacts such as earlier manufacturing operations and raw materials processing are already included.

Hence, the extracted and included data are enriching features, in CAD phase, with different types of information in order to practice and LCA,

which consists in four stages defined by standard organizations (ISO14040) [33]; goal and scope, life cycle inventories, life cycle analysis and result interpretation as shown in Figure 3.

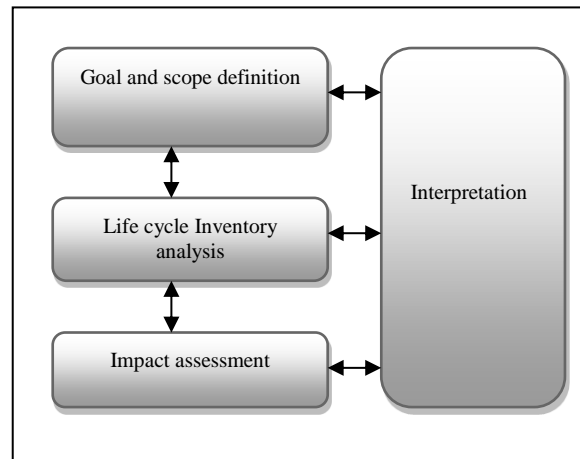


Fig. 3 LCA stages (ISO 14040)

Enriching feature make it a Life Cycle Inventory (LCI) model. This model can be used for an Environmental Evaluation during CAD phase.

Our approach is composed of seven steps as shown in figure 4:

- The first step is done by the designer in selecting a feature from CAD system data base.
- In the second step, the designer designates a m

aterial. The right material might be inexistent in CA D database, but could exist in LCA database. In this case, the designer can access to both databases.

- The third step is based on CAD/CAM/CAPP s ystems. In this step there is a generation of different possible alternative machining scenarios.

- In the fourth step, Environmental Evaluation (EE) is realized and the designer gives only the Func tional Unit (FU), which is established from the main technical characteristics of the product studied (we p ropose the FU related to the whole product) and the necessary data for realizing Simplified Life Cycle A sssessment (SLCA) is extracted automatically from C AD/CAM/CAPP systems. Data extraction is done th roughout generic algorithm that will be described in future works. The environmental impact calculus is done based on Morbidoni's Work [34] where the m anufacturing part environmental impact can be calc ulated by the proposed simplified approach given by Equation 1:

$$LCA_{Part, manuf} = LCA_{Energy\ consumption} + LCA_{Waste\ material} + LCA_{cutting\ fluid} + \dots + \sum_{i=1}^n LCA_{feature.i} \quad (eq.1)$$

Where;

$LCA_{Prod. manuf}$ =environmental impact of part manufacturing phase

$LCA_{Energy\ consumption}$ =environmental impact of part energy consumption during manufacturing process

$LCA_{waste\ material}$ =environmental impact of part waste material

$LCA_{cutting\ fluid}$ environmental impact of lubricant used for machining the part

$LCA_{feature.i}$ =total environmental impact of feature i.

The method used for calculus is the CML method [35]. It is a method which respects the standardized procedure of environmental assessment. In this met hod, environmental impacts are calculated along wit h four steps: classification, characterisation, normati on and assessment.

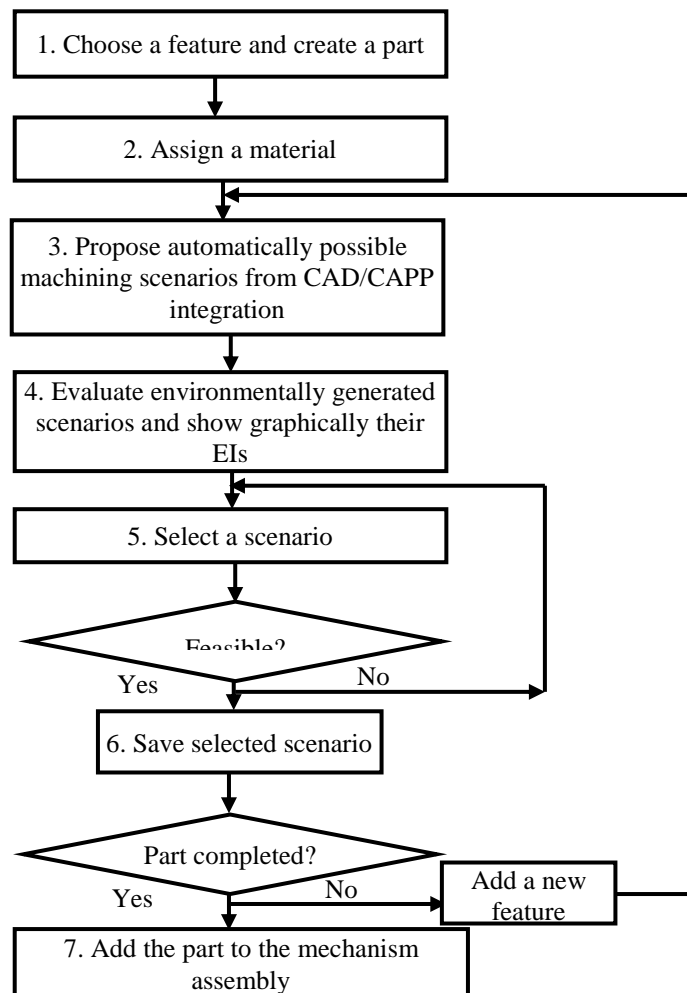


Fig.4 Proposed methodology for selecting green manufacturing process based on feature technology

After an environmental impact calculus of manufa cturing processes, a comparative graphic between sc enarios is shown to the designer. The graphic repres entation is with End-points Impacts (Resources, Hu man Health and Eco-system damages) in a Single S

core. This allows the non environmental expert desi gner to understand Environmental Impacts (EIs). Th is step is the final stage of an LCA according to ISO 14040 [33].

- In the fifth step, a scenario is selected (the opti

mum one). Therefore, a feasibility test is practiced; if the selected scenario is feasible then step six is reached, else another scenario is selected and tested.

- The sixth step consists in saving the selected machining scenario if the feasibility test is positive.

- The seventh step is reached if the test of finishing designing part is positive; otherwise the last four steps will be redone (Steps 3, 4, 5 and 6).

The calculus, in this paper, is realized on global machining processes, in order to approve the feasibility of our approach. However, we propose, in our work [36, 37] a methodology based on process

plan activities aiming at selecting the optimum scenario having the best compromise environmental impact versus cost.

Figure 5 represents a framework of a new Ecodesign tool, oriented green manufacturing, applying the approach proposed previously, which we name “Green-CAD”. It is composed of a connector which collects necessary data for LCA tool from CAD, CAM, CAPP and PLM systems which collaborate together on the same part. Once the environmental evaluation is done, graphical representation is shown to the designer. The graphic allows to see, at the user interface, the optimal scenario from proposed ones.

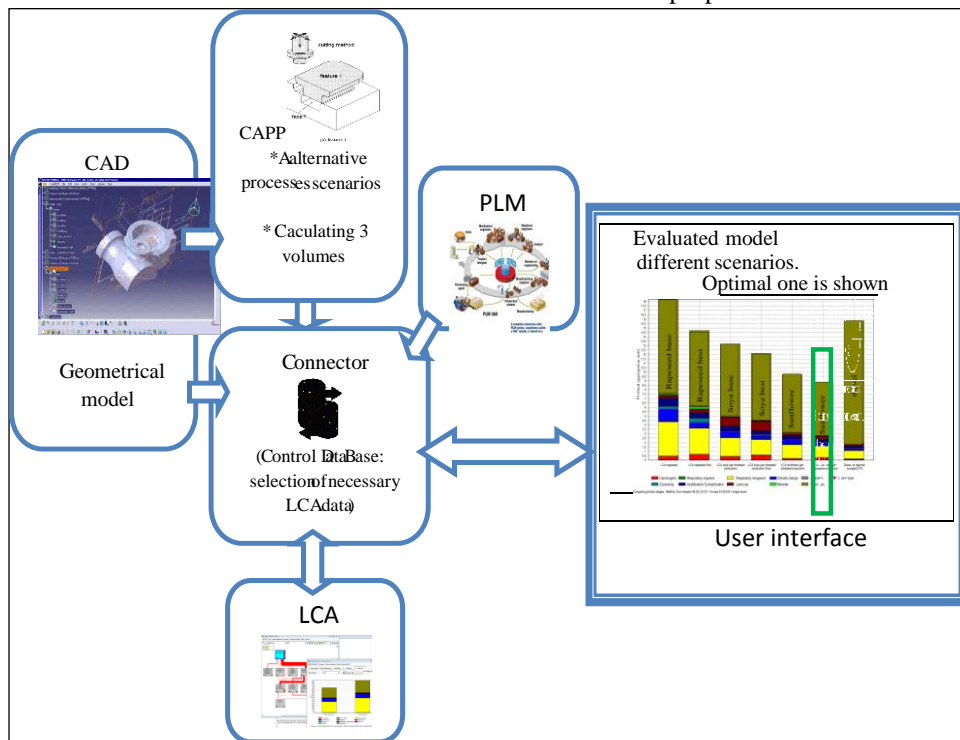


Fig.5 CAD/CAM/CAPP/PLM Integration Framework: “Green-CAD” Framework

5. Case study

To reach the final part, the designer assigns features. For each assigned feature, manufacturing scenarios can be generated, each scenario being associated with its own EIs. Our methodology, as shown before, consists of; firstly proposing alternative manufacturing scenarios after each feature selected, secondly evaluating environmentally proposed scenarios and finally comparing between the obtained results in order to help the designer choosing the most ecological one. We further illustrate the proposed methodology with a case study. We consider the part shown in the right side of figure 4 which is a part made of brass and weighting 1kg. Based on features, there are two models that can be used for the sample part; the design model and the process model. In our study we consider the process model, where each feature or a set of features requires a manufacturing process. By combinatorial rules and data extracted from

integrated systems (CAM, CAPP and PLM) to CAD system, possible manufacturing scenarios are proposed. Then, based on the integrated CAD/LCA system, that we proposed previously, EIs of each scenario are assessed.

Based on features, the identification of geometric forms of the considered part allows to generate four possible scenarios to realize it, as shown in figure 6.

- Scenario 1: the part can be made by *Molding*, then *Surfacing*, then *Inferior Milling* and *Superior Milling* processes.
- Scenario 2: the part can be obtained only by *Molding* process.
- Scenario 3: the part can be made by “*Molding*”, then *Surfacing* and *Welding* processes.
- Scenario 4: the part can be made by *Molding*, then *Surfacing*, then *Drilling* and *Thread* processes.

A Simplified LCA is performed, by using the tool “Bilan Produit”, which is a software developed by ADEME institution [30]. The database used was established in collaboration with EcoInvent Centre and the Swiss Centre for life Cycle inventories [29], in order to assess the environmental impact of each scenario and compare them. By using the CML method [35], calculated impacts are presented in the following categories considered for each step: Energy consumption NR (MJ eq), Use resources (kgSbeq), Greenhouse GWP 100 mod (kg CO2eq), Acidification (kg SO2 eq), Eutrophication (air ground water) (kg PO4eq), Photochemical pollution (kg C2H4), Aquatic Ecotoxicity (kg1.4-DBeq) and Human toxicity (kg 1.4-DB eq). These impact

indicators are expressed in units incomprehensible by non environmental expert designers. The normation occurs by taking the ratio between the value of product’s impact and the reference value of the normation. The normation chosen in this software takes as reference the daily consumption of an average European.

The results are expressed in points, in order to allow the designer to globally apprehend which is the most ecological scenario. For the final part, four machining scenarios are proposed, the comparison between their environmental impacts are shown in figure 7 which highlights that *scenario 4* is the most ecological one.

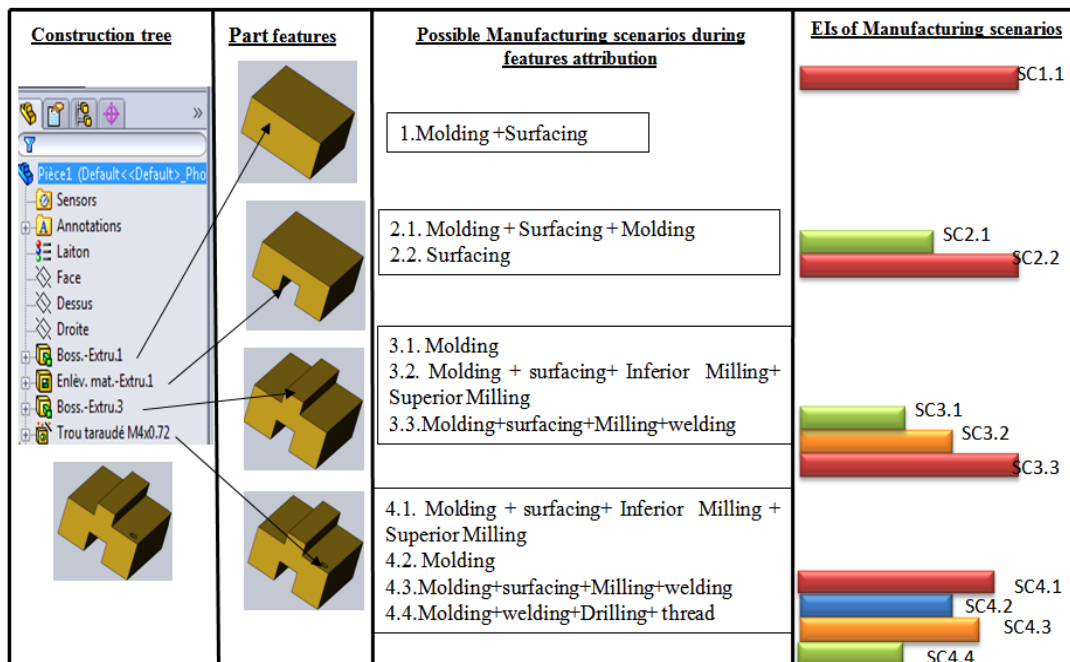


Fig.6 A model for generation and comparison of possible manufacturing scenarios for a part case study

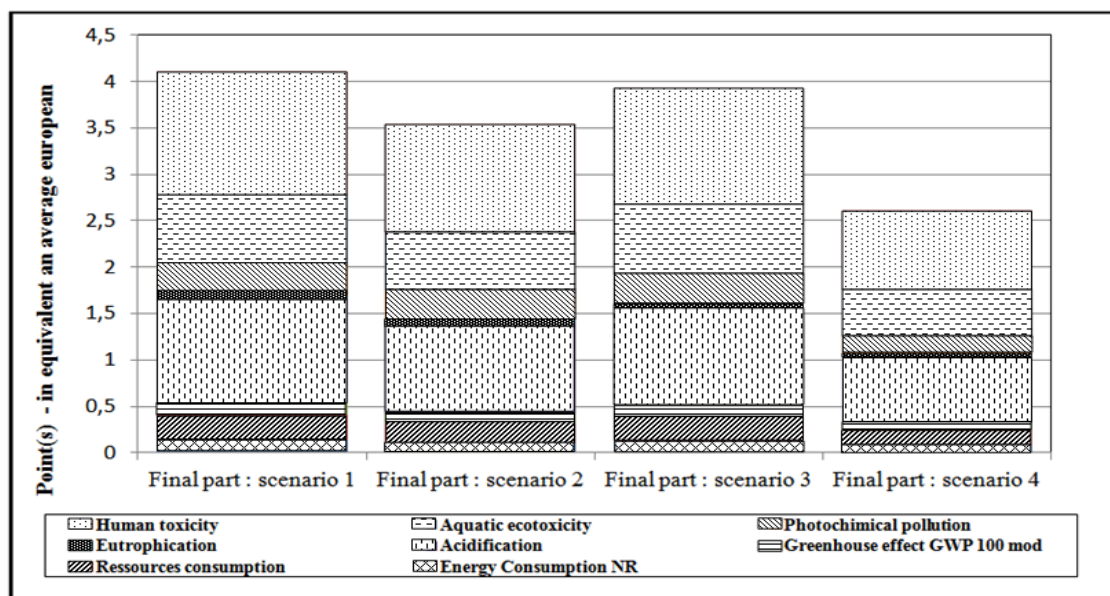


Fig.7 Comparison of environmental impacts of possible manufacturing scenarios for the final part

6. Conclusion

This paper presents the necessity of lowering EIs of manufacturing processes. It recalls some researches aiming at helping designers choosing the ECMP in CAD phase. Feature technology is used, in generating scenarios in CAPP and for the choice of greenest ones in terms of environmental impacts. Our proposed approach, also, explores feature technology to evaluate environmentally possible manufacturing processes of a product from the geometric modeling phase by an LCA tool in real time. A case study is developed to show the manufacturing scenarios generation and their related environmental impacts, which are calculated with the CML method. From this work, we deduce that FT enables the efficient retrieval of necessary Life Cycle Inventory (LCI) data. Hence, as a continuation to be published, we are developing the concept of "eco-feature" to model design data integration in the detail design phase and prepare a mechanical product to real-time simplified LCAs.

7. REFERENCES

- BREZET, J.C., (1997), Dynamics in Ecodesign practice, UNEP Industry and Environment. Vol. 20, N° 1-2, pp. 21-24, Paris.
- M.Janin (2000) Démarche d'éco-conception en entreprise, un enjeu: construire la cohérence entre outils et processus, PHD THESIS ENSAM, 2000.
- Ilgin, M. A., & Gupta, S. M. (2010). Environmentally conscious manufacturing and product recovery (ECMPRO): a review of the state of the art. *Journal of Environmental Management*, 91(3), 563-591.
- Bidarra R. and Bronsvoort WF. (2000) Semantic feature modeling-Computer Aided Design. - 2000. -Vol. 32. - pp. 201--25.
- Ghoudous P. (1996) Modélisation Intégrée de Données de Produit et de Processus de Conception [Rapport] : Tech-report. - Lyon - FRANCE : Université Claude Bernard - Lyon1, 1996.
- Smith A. E. and Dagli C. H. (1995) Manufacturing feature identification for intelligent design - Intelligent Systems in Design and Manufacturing. - Boston, MA, USA, 1995. - 17-21. - pp. 213--230.
- Yifei, T., Dongbo, L., Changbo, L., & Minjian, Y. (2008). A feature-extraction-based process-planning system. *The International Journal of Advanced Manufacturing Technology*, 38(11-12), 1192-1200.
- Jiang, B., Lau, H., Chan, F. T., and Jiang, H. (1999). An automatic process planning system for the quick generation of manufacturing process plans directly from CAD drawings. *Journal of Materials Processing Technology*, 87(1), 97-106.
- Arivazhagan A, Mehta NK, Jain PK, "A STEP AP 203/214 based Machinable Volume Identifier for Identifying the Finish Cut Machinable Volumes from Rough Machined parts" Published in "International Journal of Advanced Manufacturing Technology" Springer Publishers Ltd. UK. Volume 42, Numbers 9-10 / June, 2009, P.No.850-872, DOI 10.1007/s00170-008-1659-2. (L13-16)
- Yusof, Y., and Case, K. (2008). STEP compliant CAD/CAPP/CAM system for turning operations. In Proceedings of the World Congress on Engineering and Computer Science (pp. 22-24).
- Hebbal, S. S., and Mehta, N. K. (2008). Setup planning for machining the features of prismatic parts. *International Journal of Production Research*, 46(12), 3241-3257
- Kumar, E. (2010). Optimal choice of a machine tool for a machining job in cae environment (Doctoral dissertation, Brunel University).
- Deja, M., & Siemiatkowski, M. S. (2012). Feature-based generation of machining process plans for optimised parts manufacture. *Journal of Intelligent Manufacturing*, 1-16.
- Jiang, Z., Zhang, H., & Sutherland, J. W. (2012). Development of an environmental performance assessment method for manufacturing process plans. *The International Journal of Advanced Manufacturing Technology*, 58(5-8), 783-790.
- Le Bourhis, F., Kerbrat, O., Hascoët, J. Y., & Mognol, P. (2013). Sustainable manufacturing: evaluation and modeling of environmental impacts in additive manufacturing. *The International Journal of Advanced Manufacturing Technology*, 69(9-12), 1927-1939.
- Sheng, P., Srinivasan, M., and Kobayashi, S. (1995). Multi-objective process planning in environmentally conscious manufacturing: a feature-based approach. *CIRP Annals-Manufacturing Technology*, 44(1), 433-437.
- Munoz, A. A., and P. Sheng (1995). "An analytical approach for determining the environmental impact of machining processes." *Journal of Materials Processing Technology* 53.3 (1995): 736-758.
- Sheng, P., Srinivasan, M., and Chryssolouris, G. (1996). Hierarchical part planning strategy for environmentally conscious machining. *CIRP Annals-Manufacturing Technology*, 45(1), 455-460.
- Srinivasan, M., and Sheng, P. (1999). Feature-based process planning for environmentally conscious machining-Part 1: microplanning. *Robotics and Computer-Integrated Manufacturing*, 15(3), 257-270.
- Srinivasan, M., and Sheng, P. (1999). Feature based process planning in environmentally conscious machining-Part 2: macroplanning. *Robotics and Computer-Integrated Manufacturing*, 15(3), 271-281.
- Zhang, H., Zhang, X. G., and Wang, Y. H. (2010). The Evaluation of Resources and Environment Attributes of Manufacturing Process Based on Scatter Degree Combination Evaluation Method. *Applied Mechanics and Materials*, 37, 1466-1472.
- Cao, H. J., Liu, F., He, Y., and Zhang, H. (2002). Study on model set based process planning strategy for green manufacturing. *Jisuanji Jicheng Zhizao Xitong/Computer Integrated Manufacturing System*(China), 8(12), 978-982.
- Tan, X., Liu, F., Dacheng, L., Li, Z., Wang, H., and Zhang, Y. (2006). Improved methods for process routing in enterprise production processes in terms of

- sustainable development II. *Tsinghua Science and Technology*, 11(6), 693-700
24. Zhao, F., Murray, V. R., Ramani, K., and Sutherland, J. W. (2012). Toward the development of process plans with reduced environmental impacts. *Frontiers of Mechanical Engineering*, 1-16.
25. Nawata, Shoji, and Tojiro Aoyama (2001). "Life-cycle design system for machined parts-linkage of LCI data to CAD/CAM data." *Environmentally Conscious Design and Inverse Manufacturing, 2001. Proceedings EcoDesign 2001: Second*
26. Tan, X. C., Liu, F., Cao, H. J., and Zhang, H. (2002). A decision-making framework model of cutting fluid selection for green manufacturing and a case study. *Journal of materials processing technology*, 129(1), 467-470.
27. Jiang, Z., and Zhang, H. (2006, November). A vector projection method to evaluating machine tool alternatives for green manufacturing. In *Technology and Innovation Conference, 2006. ITIC 2006. International (pp. 640-643)*. IET.
28. Deshpande, A., Snyder, J., and Scherrer, D. (2011, June). Feature level energy assessments for discrete part manufacturing. In *39th Annual SME North American Manufacturing Research Conference (NAMRC)*.
29. Helu, M., Behmann, B., Meier, H., Dornfeld, D., Lanza, G., and Schulze, V. (2012). Impact of green machining strategies on achieved surface quality. *CIRP Annals-Manufacturing Technology*.
30. Zhang, Y., Zou, P., Li, B., & Liang, S. (2015). Study on optimized principles of process parameters for environmentally friendly machining austenitic stainless steel with high efficiency and little energy consumption. *The International Journal of Advanced Manufacturing Technology*, 1-11.
31. Frischknecht, R., Jungbluth, N., Althaus, H. J., Doka, G., Heck, T., Hellweg, S., ... & Wernet, G. (2007). *Overview and methodology*. Ecoinvent Rep, 1.
32. Bilan produit ADEME, Bilan Produit 2008, <http://www.ademe.fr/bilanproduit/>
33. ISO 14040:1997. Environmental management—life cycle assessment—principles and framework.
34. Morbidoni, A., Favi, C., & Germani, M. (2011). CAD-Integrated LCA Tool: Comparison with dedicated LCA Software and Guidelines for the improvement. *Glocalized Solutions for Sustainability in Manufacturing*, 569-574.
35. Guinée J., Heijungs R. (1992): *Environmental life cycle assessment of products: Guide*, CML, Leiden, The Netherlands.
36. Gaha, R., Benamara, A., & Yannou, B. (2015). An Environmental Impact/Cost Model for Evaluating Multiple Feature-Based Machining Methods. In *Design and Modeling of Mechanical Systems-II (pp. 21-27)*. Springer International Publishing.
37. Gaha R., Yannou B., Benamara A. (2014) 'A New Eco-design Approach on CAD systems', *International Journal of Precision Engineering and Manufacturing*, vol. 15, no. 7 (July 2014), pp. 1443-1451, doi: 10.1007/s12541-014-0489-4