



HAL
open science

Fungal microbiota dysbiosis in IBD.

Harry Sokol, Valentin Leducq, Hugues Aschard, Hang-Phuong Pham, Sarah Jegou, Cecilia Landman, David Cohen, Giuseppina Liguori, Anne Bourrier, Isabelle Nion-Larmurier, et al.

► **To cite this version:**

Harry Sokol, Valentin Leducq, Hugues Aschard, Hang-Phuong Pham, Sarah Jegou, et al.. Fungal microbiota dysbiosis in IBD.. Gut, 2016, 66 (6), pp.1039-1048. <10.1136/gutjnl-2015-310746>. <hal-01270909>

HAL Id: hal-01270909

<https://hal.science/hal-01270909v1>

Submitted on 9 Feb 2016

HAL is a multi-disciplinary open access archive for the deposit and dissemination of scientific research documents, whether they are published or not. The documents may come from teaching and research institutions in France or abroad, or from public or private research centers.

L'archive ouverte pluridisciplinaire **HAL**, est destinée au dépôt et à la diffusion de documents scientifiques de niveau recherche, publiés ou non, émanant des établissements d'enseignement et de recherche français ou étrangers, des laboratoires publics ou privés.



Distributed under a Creative Commons CC BY-NC 4.0 - Attribution - Non-commercial use - International License



OPEN ACCESS

ORIGINAL ARTICLE

Fungal microbiota dysbiosis in IBD

Harry Sokol,^{1,2,3,4} Valentin Leducq,^{1,4} Hugues Aschard,⁵ Hang-Phuong Pham,⁶ Sarah Jegou,^{1,4} Cecilia Landman,^{3,4} David Cohen,^{1,2} Giuseppina Liguori,⁷ Anne Bourrier,^{3,4} Isabelle Nion-Larmurier,^{3,4} Jacques Cosnes,^{3,4} Philippe Seksik,^{3,4} Philippe Langella,^{2,4} David Skurnik,^{8,9} Mathias L Richard,^{2,4} Laurent Beaugerie^{3,4}

► Additional material is published online only. To view please visit the journal online (<http://dx.doi.org/10.1136/gutjnl-2015-310746>).

For numbered affiliations see end of article.

Correspondence to

Dr Harry Sokol, Service de Gastroentérologie et Nutrition, Hôpital Saint-Antoine, 184 rue du faubourg St Antoine, Paris 75571, cedex 12, France; harry.sokol@aphp.fr

Received 17 September 2015

Revised 12 January 2016

Accepted 14 January 2016

ABSTRACT

Objective The bacterial intestinal microbiota plays major roles in human physiology and IBDs. Although some data suggest a role of the fungal microbiota in IBD pathogenesis, the available data are scarce. The aim of our study was to characterise the faecal fungal microbiota in patients with IBD.

Design Bacterial and fungal composition of the faecal microbiota of 235 patients with IBD and 38 healthy subjects (HS) was determined using 16S and ITS2 sequencing, respectively. The obtained sequences were analysed using the Qiime pipeline to assess composition and diversity. Bacterial and fungal taxa associated with clinical parameters were identified using multivariate association with linear models. Correlation between bacterial and fungal microbiota was investigated using Spearman's test and distance correlation.

Results We observed that fungal microbiota is skewed in IBD, with an increased Basidiomycota/Ascomycota ratio, a decreased proportion of *Saccharomyces cerevisiae* and an increased proportion of *Candida albicans* compared with HS. We also identified disease-specific alterations in diversity, indicating that a Crohn's disease-specific gut environment may favour fungi at the expense of bacteria. The concomitant analysis of bacterial and fungal microbiota showed a dense and homogenous correlation network in HS but a dramatically unbalanced network in IBD, suggesting the existence of disease-specific inter-kingdom alterations.

Conclusions Besides bacterial dysbiosis, our study identifies a distinct fungal microbiota dysbiosis in IBD characterised by alterations in biodiversity and composition. Moreover, we unravel here disease-specific inter-kingdom network alterations in IBD, suggesting that, beyond bacteria, fungi might also play a role in IBD pathogenesis.

INTRODUCTION

Crohn's disease (CD) and UC, the two primary types of IBD, are lifelong conditions that usually affect young subjects and substantially alter their quality of life. The exact pathogenesis of IBD remains unknown; however, studies over the last decade have demonstrated that IBD involves an altered immune response towards gut microbiota in genetically predisposed subjects and under the influence of environmental factors. The bacterial microbiota in IBD has been thoroughly investigated, and several groups worldwide observed a bacterial dysbiosis (an imbalance in composition)

Significance of this study

What is already known on this subject?

- The bacterial intestinal microbiota is unbalanced in IBDs and plays a role in its pathogenesis.
- The fungal microbiota has been poorly studied despite several clues of its role in IBD pathogenesis.
- Card9 and Dectin1, two key molecules involved in the innate immunity against fungi, strongly influence mice susceptibility to intestinal inflammation and the fungal microbiota.

What are the new findings?

- The faecal fungal microbiota is imbalanced in patients with IBD.
- The concomitant analysis of the bacterial microbiota in the same subjects showed many correlations between bacterial and fungal components with differences between IBD and healthy subjects, suggesting the existence of disease-specific inter-kingdom alterations.

How might it impact on clinical practice in the foreseeable future?

- These results support the role of fungal microbiota in IBD pathogenesis and indicate a new potential therapeutic target.

that is characterised by a reduced biodiversity, a decrease in some bacteria belonging to the Firmicutes phylum (such as *Faecalibacterium prausnitzii*) and an increase in bacteria belonging to the Proteobacteria phylum such as *Escherichia coli*.¹⁻⁵ However, other microorganism types colonising the human gut have not been thoroughly investigated. With the exception of a recent study highlighting the possible role of the enteric virome in IBD,⁶ the data are scarce, particularly regarding fungal microbiota. Fungi have long been suspected in IBD pathogenesis. Many years ago, antibodies directed against *Saccharomyces cerevisiae* mannan (Anti *Saccharomyces cerevisiae* antibody (ASCA)) were shown to be associated with CD. Moreover, several IBD-associated genes, such as Card9, are involved in immune responses to fungi.⁷ In mice, gut inflammation promotes fungi proliferation;⁸ conversely, some fungi can modulate susceptibility

To cite: Sokol H, Leducq V, Aschard H, et al. *Gut* Published Online First: [please include Day Month Year] doi:10.1136/gutjnl-2015-310746

Inflammatory bowel disease

to inflammation in a negative (*Candida albicans*) or positive (*Saccharomyces boulardii*) manner.^{8–11} Finally, mice lacking major genes involved in fungi sensing, such as Dectin-1 or Card9, have an increased fungal microbiota load and are more susceptible to colitis.^{12–13} These data suggest a link between fungal microbiota and IBD pathogenesis.

Here, we characterised the fungal microbiota in both healthy subjects (HS) and patients with well-phenotyped IBD using high-throughput sequencing technology. In the corresponding patients, we also determined the bacterial microbiota composition and the sequence of 22 single-nucleotide polymorphisms (SNPs) in genes known to be involved in fungal susceptibility. We observed a clear fungal dysbiosis in patients with IBD. Moreover, a correlation analysis suggested altered inter-kingdom relations in IBD. Finally, while somewhat lacking in power, our genotype–fungal microbiota analysis suggested that genes may be a driving factor of the fungal microbiota dysbiosis in IBD.

Overall, the data presented in this study represent the most comprehensive analysis of fungal microbiota in patients with IBD to date and provide a rationale to support the role of fungal microbiota in IBD pathogenesis. These data thus pave the way for intervention studies targeting fungal microbiota.

RESULTS

Bacterial dysbiosis in IBD

Our study population was composed of 235 patients with well-phenotyped IBD and 38 HS (see online supplementary 1). We first analysed the bacterial fraction of the microbiota using 16S sequencing. A beta diversity analysis showed a clustering of samples according to disease phenotypes (figure 1A, B, online supplementary figure S1). Compared with HS samples, the alpha diversity (assessed using four different indexes) was significantly decreased in UC and CD and particularly in samples from patients in flare (figure 1C, D, online supplementary figure S2). In all phenotypes, the bacterial microbiota was dominated by bacteria from Firmicutes, Bacteroidetes and Proteobacteria phyla (figure 1E, F, online supplementary figure S3). These data are in accordance with the published literature and validate the quality of our cohort and the methods used.

Altered fungal microbiota diversity in IBD

Using ITS2 sequencing, we then assessed the composition of the fungal microbiota in our population. The clustering between the samples according to disease phenotype was weaker than with bacterial microbiota (figure 2A, B, online supplementary figure S4A). Notably, no statistically significant difference was observed between samples from patients with CD and UC or between samples from patients with IBD in remission and HS. However, a difference was observed between samples from patients with IBD in flare and HS ($p=0.0008$) or patients with IBD in remission ($p=0.0007$). This fungal microbiota-specific signal in flare was observed with a higher intensity in UC ($p=0.0002$) than in CD ($p=0.006$; see online supplementary figure S4B–C). Similar to the results found with the bacterial microbiota, the alpha diversity of the fungal microbiota was decreased in patients with IBD (figure 2C, online supplementary figure S5A–D). This feature was primarily found in samples from patients with UC, whereas fungi diversity was largely similar among the HS and patients with CD. To explore the equilibrium between bacteria and fungi diversity in the gut, we then determined the fungi-to-bacteria diversity ratio. This ratio was increased in IBD samples and particularly in CD and flares (figure 2D, online supplementary figure S5E–G). The highest ratio was found among patients with CD and demonstrated ileal involvement. In both

HS and patients with IBD, the fungal microbiota was dominated by fungi from the Ascomycota and Basidiomycota phyla with some variations according to disease phenotype (figure 2E, F, online supplementary figure S6). Among the most dominant genera were *Saccharomyces*, *Debaryomyces*, *Penicillium*, *Kluyveromyces* and *Candida*. Interestingly, *Saccharomyces*, *Debaryomyces* and *Kluyveromyces* are found in food (cheese, bread, beer notably); they might be routinely ingested in this French cohort, suggesting a possible influence of the diet habits, although a specific study is needed to explore this hypothesis.

These data show specific alterations in fungal microbiota diversity in parallel with modifications of the bacterial microbiota. Taken together, this suggests that the environmental changes during inflammation might affect differently fungi and bacteria and induce an altered fungal–bacterial inter-kingdom relationship in IBD.

Distortion in bacterial and fungal microbiota composition in IBD

We identified the microbial features associated with disease phenotype and used a multivariate association test to control for the effects of potential confounding factors such as age, gender, smoking and treatment (multivariate association with linear models (MaAsLin); see ‘Materials and methods’ for details). Regarding bacterial microbiota, we observed an alteration in the abundance of several taxa in IBD compared with HS, in flare compared with remission and in IBD with ileal involvement compared with IBD without ileal involvement (figure 3A; see online supplementary figures S7A and 8, table S1 for full MaAsLin output). Many of these taxa have been reported in previous studies,^{1–5} including Ruminococcaceae, Lachnospiraceae, Enterobacteriaceae, Pasteurellaceae, Rikenellaceae and Gemellaceae. Notably, *Ruminococcus*, *Coprococcus*, *Blautia*, *Eubacterium* and *Dorea* abundance were decreased in IBD, *Roseburia*, *Faecalibacterium*, *Dorea* and *Blautia* abundance were decreased in IBD flare and *Ruminococcus gnavus* was increased in ileal CD. In addition to confirming these already demonstrated associations, we also found new associations such as a decrease in *Anaerostipes* in IBD and particularly in flare and in ileal CD. We also found an increase of *Streptococcus anginosus* in IBD and an increase of *Aggregatibacter segnis* and *Actinobacillus* (two members of the Pasteurellaceae family) in IBD flare compared with remission.

When analysing fungal microbiota, we identified a lower number of associations with the disease phenotype (figure 3B; see online supplementary figure S7B, table S2 for full MaAsLin output). One of the most striking features was the increased abundance of Basidiomycota in IBD and particularly in flare, which was balanced by an equivalent decrease in Ascomycota. Among the decreased Ascomycota in IBD and in flare, *Malassezia sympodialis* was identified. However, the *Saccharomyces* genus and particularly *S. cerevisiae* species exhibited the strongest signals. We thus performed real-time qPCR targeting *S. cerevisiae* on the same samples and confirmed a clear decrease in *S. cerevisiae* both in the absolute number and regarding the proportion in IBD and particularly in flare (figure 3C, online supplementary figure S9A–B). Although *C. albicans* abundance is increased in CD,¹⁴ *Candida* was not identified to be associated with disease phenotype in the multivariate analysis. We thus performed real-time qPCR targeting *C. albicans* on the same samples to specifically examine this microorganism. The *C. albicans* proportion and absolute number were significantly increased in IBD flare compared with IBD in remission (figure 3D, E, online supplementary figure S9C). We investigated correlations between their respective

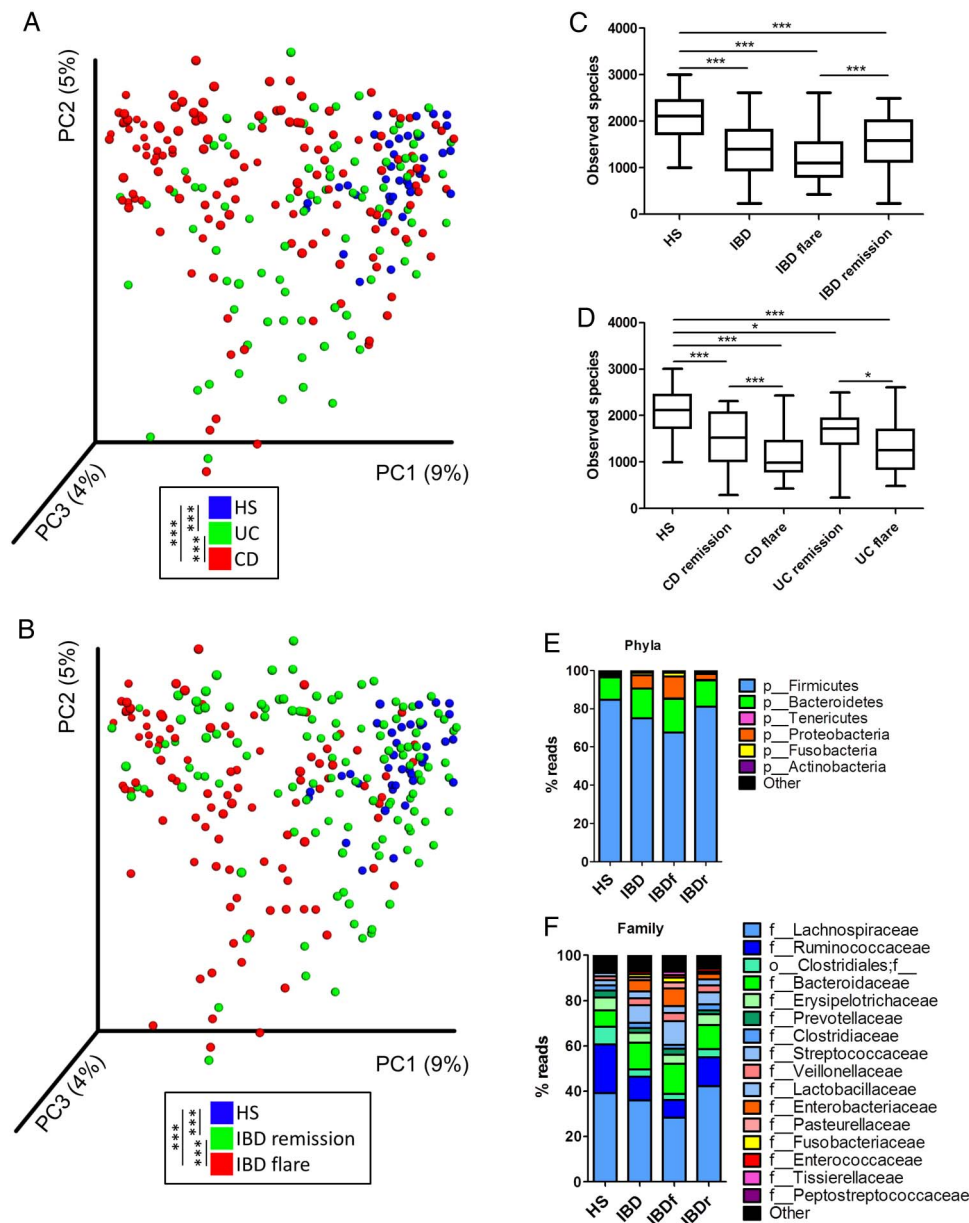


Figure 1 Altered bacterial microbiota biodiversity and composition in IBD. (A and B) Beta diversity. Principal coordinate analysis of Bray–Curtis distance with each sample coloured according to the disease phenotype. PC1, PC2 and PC3 represent the top three principal coordinates that captured most of the diversity. The fraction of diversity captured by the coordinate is given as a percentage. Groups were compared using Permanova method. (C and D) Observed species number describing the alpha diversity of the bacterial microbiota in the various groups studied (Kruskal–Wallis test with Dunn’s multiple comparison test). (E and F) Global composition of bacterial microbiota at the phyla and family levels. Healthy subjects (HS) and patient subgroups are labelled on the x-axis and expressed as the relative operational taxonomic unit (OTUs) abundance for each group. In all panels: * $p < 0.05$; ** $p < 0.01$; *** $p < 0.001$. CD, Crohn’s disease.

abundance. Basidiomycota and Ascomycota abundances exhibited a strong negative correlation with each other (see online supplementary figure S9D). Moreover, the Basidiomycota-to-Ascomycota abundance ratio was dramatically different according to the disease phenotype with higher values in IBD flare compared with IBD in remission and HS (figure 3F–G), suggesting that this ratio could represent a fungal dysbiosis index.

S. cerevisiae induces a regulatory response of dendritic cells

Due to the sequencing and qPCR results, we hypothesised that *S. cerevisiae* and *C. albicans* could respectively exert a protective and worsening role in the inflammatory process. As a proof of principle, we assessed the interleukin (IL)6 and IL10 production

of murine bone marrow-derived dendritic cells (BMDCs) after stimulation with the two heat-killed yeast strains. The IL6 production was similar among *S. cerevisiae* and *C. albicans*; however, the production of the anti-inflammatory cytokine IL10 was significantly higher following stimulation with *S. cerevisiae*, suggesting an anti-inflammatory effect of *S. cerevisiae* compared with *C. albicans* (figure 4). Interestingly, the observed effects were Card9-dependent because cytokine production was nearly abolished in DC from Card9 KO mice. This confirmed the central role of this gene in host–fungi interactions.

IBD microbiota show-specific bacteria–fungi associations

We next assessed whether the fungi microbiota composition was correlated with the bacterial composition. To address this, we

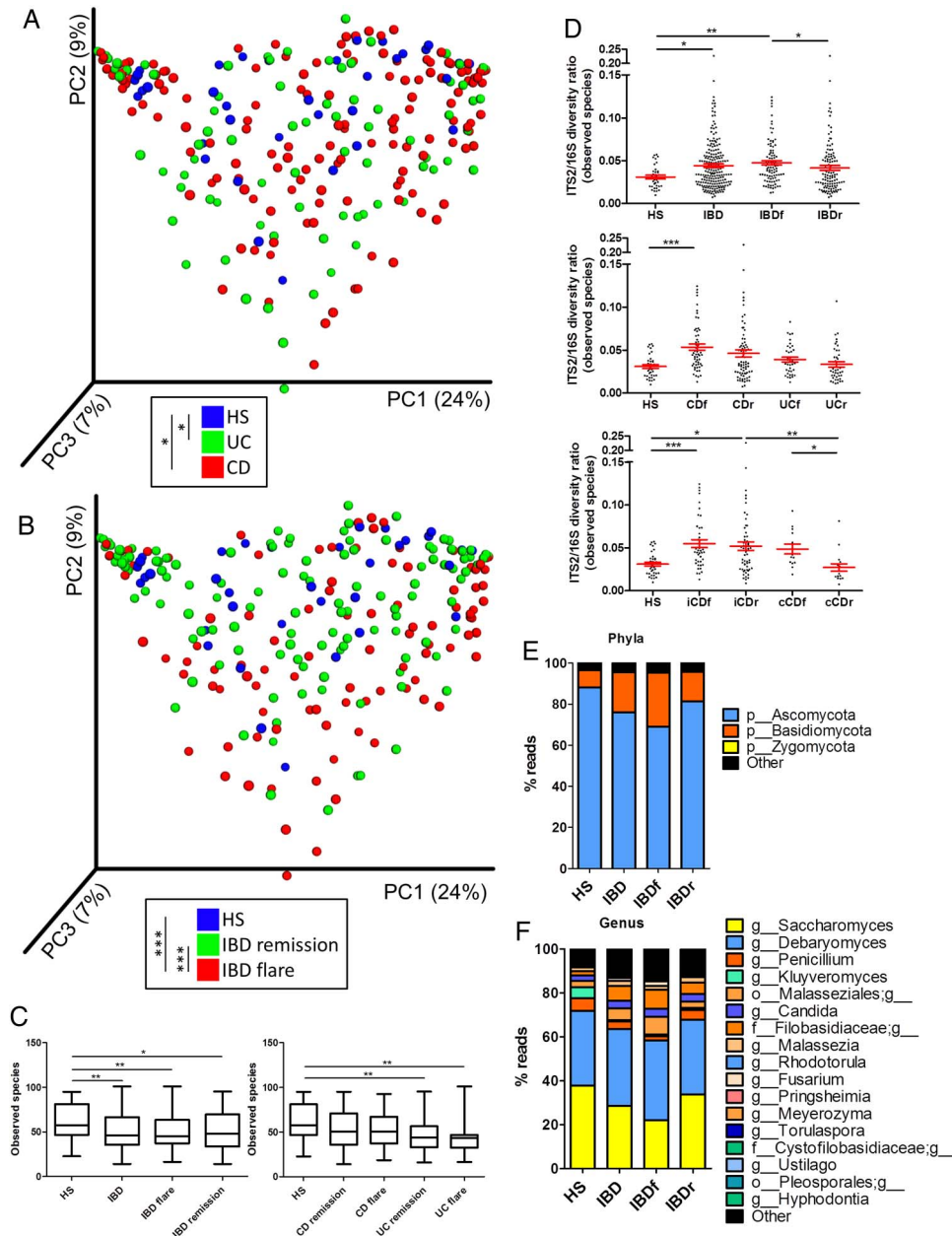


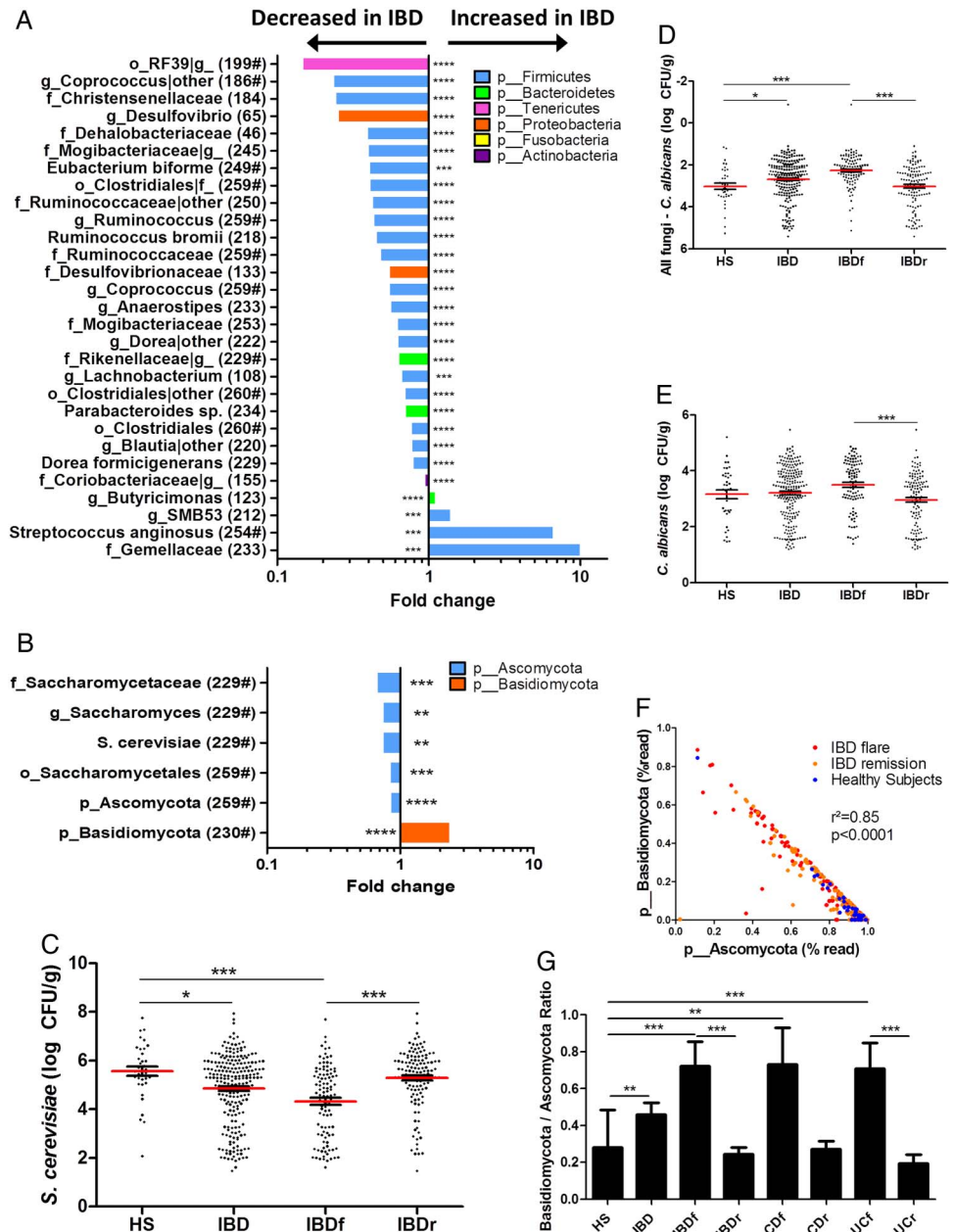
Figure 2 Altered fungal microbiota biodiversity and composition in IBD. (A and B) Beta diversity. Principal coordinate analysis of Bray–Curtis distance with each sample coloured according to the disease phenotype. PC1, PC2 and PC3 represent the top three principal coordinates that captured most of the diversity. The fraction of diversity captured by the coordinate is given as a percentage. Groups were compared using Permanova method. (C) Observed species number describing the alpha diversity of the fungal microbiota in the various groups studied. (D) ITS2/16S observed species ratio (Kruskal–Wallis test with Dunn’s multiple comparison test). (E and F) Global composition of fungal microbiota at the phyla and genus levels. Healthy subjects (HS) and patient subgroups are labelled on the x-axis and expressed as relative OTUs abundance for each group. In all panels: * $p < 0.05$; ** $p < 0.01$; *** $p < 0.001$. CD, Crohn’s disease.

investigated a correlation at the genus level according to disease phenotype. We observed a disease-specific pattern with a higher number of significant correlations in UC compared with HS (figure 5). Although the number of correlations was similar in HS and in CD, the strength of the correlations was weaker in CD (figure 5).

Interestingly, in patients with IBD, there was a positive correlation between the abundance of *Saccharomyces* and the abundance of several bacteria that display reduced abundance in IBD such as *Bifidobacterium*, *Blautia*, *Roseburia* and *Ruminococcus*. On the other hand, unidentified Malasseziales followed an opposite pattern. Then, to demonstrate the global intra-

kingdom and inter-kingdom equilibrium according to disease phenotype, we built correlation networks at the genus level involving both bacteria and fungi (figure 6). In HS, the bacterial and fungi diversity was high (figures 1 and 2), with a network showing no marked foci of attractions with both positive and negative correlations distributed throughout the nodes. Strikingly, the CD and UC networks were dramatically different. Notably, many negative correlations connecting genera from the Proteobacteria phylum to members of the Firmicutes phylum were observed in IBD. Involvement of fungi genera from the Basidiomycota phylum, and particularly unidentified Malasseziales, in correlations was decreased in CD but increased

Figure 3 Bacterial and fungal taxa associated with IBD. (A and B) Differences in abundance are shown for the bacterial and fungal taxa detected using a multivariate statistical approach (see 'Material and Methods'). The fold change for each taxon was calculated by dividing the mean abundance in the cases by that of the controls. The number of subjects that have any presence (>0) of the indicated taxon is indicated in brackets, and taxon with a mean abundance of >0.5% in at least one of the groups is indicated with '#'. (C) Absolute *Saccharomyces cerevisiae* abundance in the faecal microbiota quantified using qRT-PCR (mean \pm SEM). (D) Relative proportion of *Candida albicans* calculated by subtracting the log number of *C. albicans* from the log number of all fungi. (E) Absolute *C. albicans* abundance in the faecal microbiota quantified using qRT-PCR (mean \pm SEM). (F) Basidiomycota/Ascomycota relative abundance ratio in the various groups studied (Kruskal–Wallis test with Dunn's multiple comparison test, * $p < 0.05$; ** $p < 0.01$; *** $p < 0.001$; **** $p < 0.0001$). CD, Crohn's disease; HS, healthy subjects.



in UC compared with HS. Similar results were obtained when Spearman's test was used to build the correlation network (data not shown).

Taken together, these results suggest a complex relationship between the bacteria and fungi in the gut microbiota and that specific alterations are present in CD and UC.

Fungal microbiota–genotype association

In mice, the gut bacterial microbiota has been shown to be influenced by host genes.^{15 16} Substantial data suggest similar effects in humans.^{17 18} However, no data are available regarding fungal microbiota. We thus tested for a correlation between the relative abundance of fungal taxa associated with the disease phenotype (Basidiomycota and Ascomycota phyla as well as *S. cerevisiae* and *M. sympodialis* species) and the CARD9 SNPs associated with IBD as well as several other SNPs that have been involved in defective responses to fungi.^{12 19–23} We used standard linear regression and adjusted all analyses for age, gender, smoking

and treatment. With a total of 84 tests, the Bonferroni corrected p value threshold for an initial alpha of 5% was 6×10^{-4} . As shown in [table 1](#), which presents the 10 most significant associations, no test passed that threshold. Such a stringent significance threshold led to only limited power for our population. For example, we had 80% power to detect SNP explaining 10% (or more) of the variance of the tested taxa, but <2% power to detect SNP explaining 1% of the variance. While the presence of taxa-associated SNPs and the magnitude of the SNP effect remain to be determined, large effect size (eg, $\geq 10\%$) appear unlikely in regard of the marginal effect of these SNPs on IBD. However, we identified interesting trends: notably, a Dectin1 SNP associated with medically refractory UC (rs2078178, 'T' allele¹²) was negatively correlated with the abundance of *M. sympodialis* (itself decreased in IBD flare). In the same manner, the IBD-associated CARD9 SNP (rs10781499, 'A' allele²¹) was negatively correlated with the abundance of *S. cerevisiae* (itself decreased in IBD).

Inflammatory bowel disease

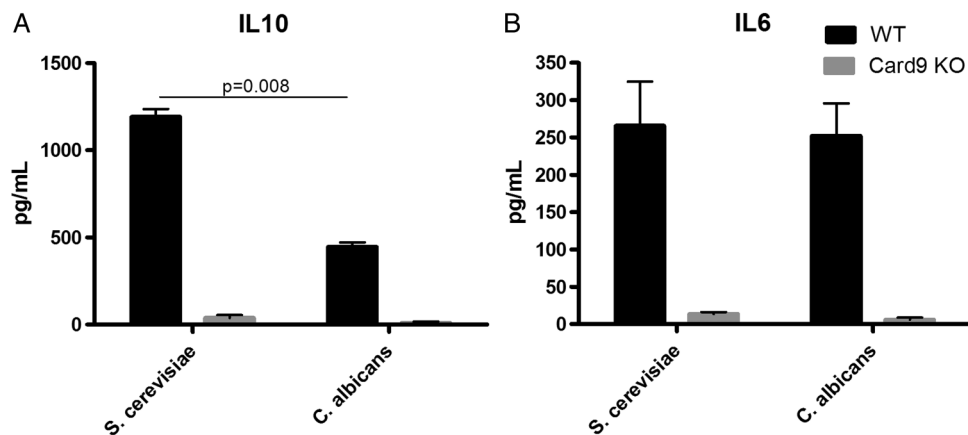


Figure 4 *Saccharomyces cerevisiae* and *Candida albicans* induces distinct dendritic cell response. Interleukin (IL)10 (A) and IL6 (B) secretion by mouse bone marrow-derived dendritic cells following stimulation with *S. cerevisiae* and *C. albicans* (mean±SEM). The numbers of mice per experiment are n=5–15 (Mann–Whitney *U* test). KO, knockout; WT, wildtype.

DISCUSSION

In this study, we showed that disease-specific changes in the fungal gut microbiota are present in IBD. The simultaneous

analysis of both the fungal and the bacterial microbiota enabled the elucidation of differences in the inter-kingdom equilibrium between patients with IBD and HS.

Figure 5 Specific bacteria–fungi correlation pattern in IBD. Distance correlation plots of the relative abundance of fungi and bacteria genera. Healthy subjects (HS) (left), UC (middle) and Crohn’s disease (CD) (right). Statistical significance was determined for all pairwise comparisons; only significant correlations (*p* value <0.05 after false discovery rate correction) are displayed. Positive values (blue squares) indicate positive correlations, and negative values (red squares) indicate inverse correlations. The shading of the square indicates the magnitude of the association; darker shades are more strongly associated than lighter shades. The sign of the correlation was determined using Spearman’s method.

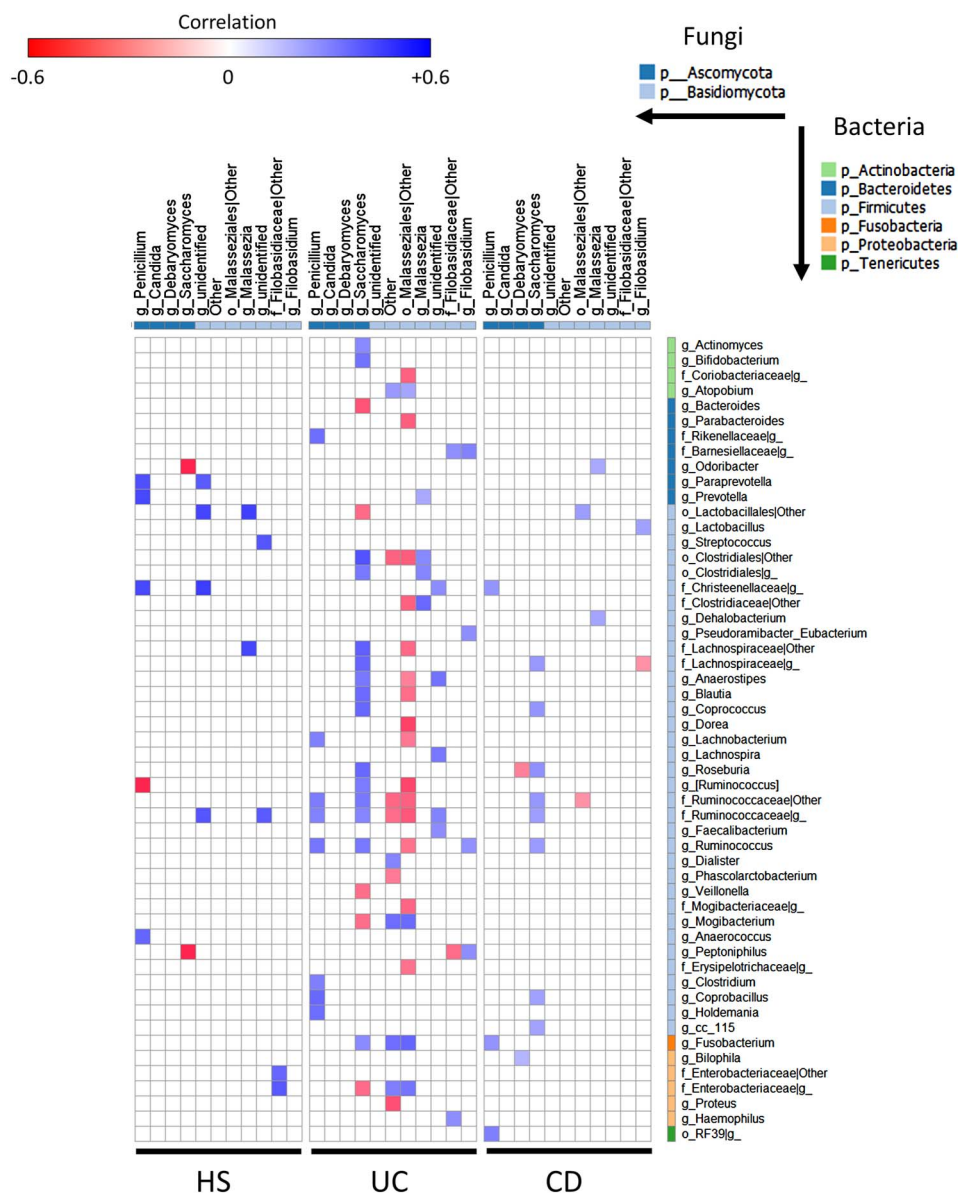
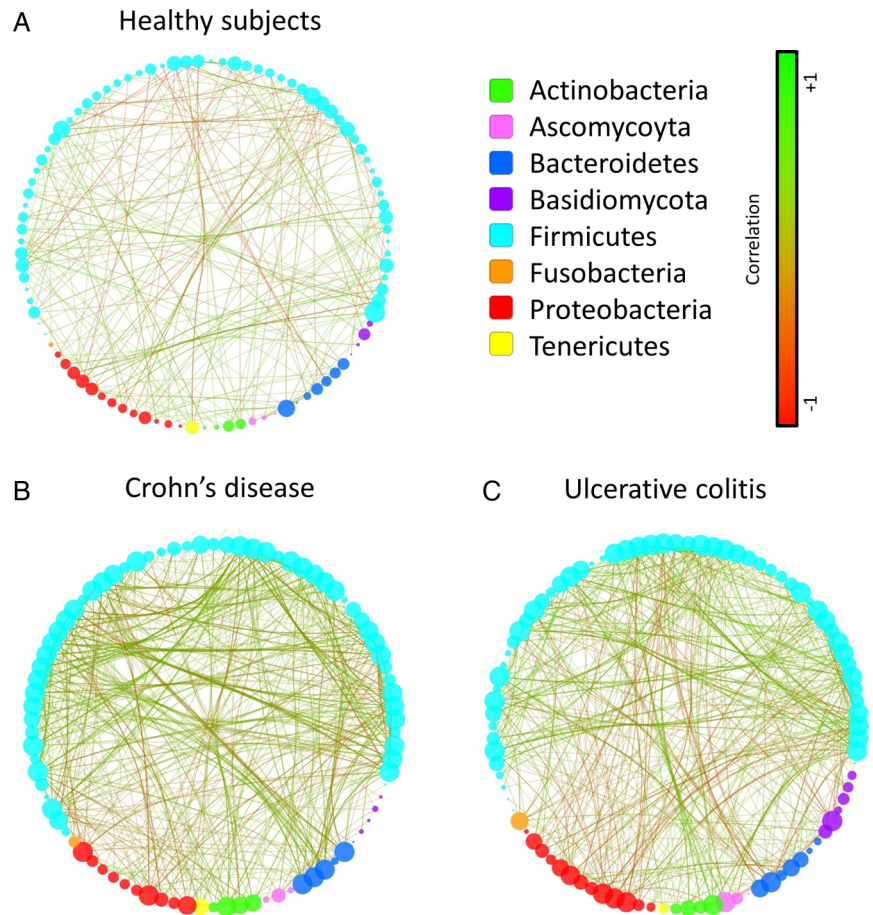


Figure 6 Imbalance trans-kingdom network in IBD. Correlation network in healthy subjects (A), Crohn's disease (B) and UC (C) generated using Cytoscape. Each circle (node) represents a microbial genus, its colour represents the bacterial or fungal phylum it belongs to and its size represents the number of direct edges that it has. The edge colour indicates the magnitude of the distance correlation; green indicates positive correlation and red indicates negative correlation (determined using spearman test). Statistical significance was determined for all pairwise comparisons; only significant correlations (p value <0.05 after false discovery rate correction) are displayed.



Bacterial biodiversity was decreased in both CD and UC. However, fungal biodiversity was decreased only in UC. For CD, this suggests that CD-specific environmental changes may favour fungi at the expense of bacteria. These results were particularly observed in CD patients with ileal involvement. Notably, CD patients without ileal involvement behave like UC patients with decreased fungal biodiversity (see online supplementary figure S5A, D) and only small changes in their ITS2/16S biodiversity ratio (figure 2D). Decreases in fungal gut microbiota have recently been observed in paediatric patients with IBD.²⁴ However, the number of patients analysed in that study did not enable the authors to discriminate them according to disease phenotype and thus precluded the elucidation of CD patients' specificities. The ileum is a major actor in intestinal

physiology, notably by producing antimicrobial peptides and absorbing bile acids, two functions that are altered in ileal CD and with a potential high impact on luminal bacteria and fungi.^{25–28} These alterations in ileal CD could be involved in the specific microbiota alterations observed.

In accordance with published data, the fungal faecal microbiota composition of both HS and patients with IBD were dominated by fungi from the Ascomycota and the Basidiomycota phyla.^{7 24 29 30} Ascomycota and Basidiomycota abundances were strongly negatively correlated with each other and were among the most important discriminative features between IBD and HS microbiota as well as between IBD flare and remission. Logically, the Basidiomycota-to-Ascomycota abundance ratio differed between patients with IBD and HS. Compared with

Table 1 Ten most significant associations between IBD-associated fungi taxa and tested single-nucleotide polymorphisms (SNPs)

Outcome	SNP	Coded allele	Gene	Beta	p Value
s__ <i>Malassezia sympodialis</i>	rs2078178	T	Dectin-1	-0.264	0.003
s__ <i>Malassezia sympodialis</i>	rs4833095	T	TLR1	0.198	0.019
p__Ascomycota	rs5743611	G	TLR1	0.545	0.036
s__ <i>Malassezia sympodialis</i>	rs3901533	T	Dectin-1	-0.204	0.044
p__Basidiomycota	rs5743611	G	TLR1	-0.504	0.050
p__Ascomycota	rs2287886	G	DC-SIGN	-0.197	0.058
s__ <i>Malassezia sympodialis</i>	rs5743618	T	TLR1	-0.139	0.072
s__ <i>Saccharomyces cerevisiae</i>	rs10781499	G	CARD9	0.193	0.072
s__ <i>Saccharomyces cerevisiae</i>	rs3775291	G	TLR3	0.193	0.079
s__ <i>Malassezia sympodialis</i>	rs10841845	G	Mincle	-0.146	0.081

HS, the ratio was high in patients with IBD in flare (either UC or CD) but was normal in remission, suggesting that this imbalance between Basidiomycota and Ascomycota may be either driven by inflammation or involved in the inflammatory process.

We showed that *S. cerevisiae* represents a major component of the normal fungal microbiota. Its decrease, confirmed via real-time qPCR, was independently associated with IBD (vs HS) and with flare (vs remission). *S. cerevisiae* has recently been shown to reduce colitis induced by adherent-invasive *E. coli*, a bacteria associated with ileal CD, in CEACAM6-expressing mice.³¹ *S. boulardii*, a probiotic yeast closely related to *S. cerevisiae*,³² has been shown to exhibit anti-inflammatory effects in several colitis models⁷ as well as beneficial effects in the prevention of antibiotic-associated diarrhoea, acute diarrhoea, *Clostridium difficile* infection and enteral feeding-related diarrhoea.³³ Taken together, these data suggest that *S. cerevisiae* could be poorly adapted to an inflammatory environment and/or that it has an anti-inflammatory potential. This raises the possibility of using fungi in new therapeutic approaches in a manner similar to what is currently being developed with several bacterial types. The results obtained using an in vitro BMDC system suggest that *S. cerevisiae* may exhibit regulatory effects on the host, notably by inducing IL10 production. These results are in accordance with another study reporting an increased expression of IL10 in the colons of mice receiving *S. cerevisiae* in a colitis setting.³⁴ Further experiments with *S. cerevisiae* and other fungi, such as *M. sympodialis*, will be necessary to determine the role of these species in the gut and during intestinal inflammation.

Although *Candida* was among the most abundant genera in our studied population, it was not identified to be associated with disease phenotype in the multivariate analysis. This may be due to the high heterogeneity within the *Candida* genera and to the difficulty in identifying fungi at the species level using our sequencing approach. Indeed, the majority of the sequences identified as belonging to the *Candida* genera were not assigned to a specific species. Because several studies showed an increased level of *C. albicans* in patients with IBD,^{7 24 30} we assessed its abundance in the same samples using real-time qPCR. We confirmed a significant increase of *C. albicans* abundance in patients with IBD and particularly in flare.

We herein identified a disease-specific fungal microbiota dysbiosis with shifts in composition involving the two dominant fungi phyla Ascomycota and Basidiomycota and several fungi species including *S. cerevisiae*, *M. sympodialis* and *C. albicans*. Although changes in the fungal microbiota of patients with IBD could be connected with their altered dietary habits,³⁵ these shifts potentially also play a role in the inflammatory process. Very little is known on the influence of *M. sympodialis* on intestinal inflammation. *Malassezia* is a genus found on the skin of mammals and associated with numerous conditions from dandruff to atopic eczema or pityriasis.³⁶ Despite that *Malassezia* clearly belongs to the human skin microbiota, species of this genus have been frequently identified in the human gut microbiota, suggesting possible colonisation of the gut.⁷ Indeed, the genome of *Malassezia* shows the presence of genes coding for secreted enzymes similar to the well-known human pathogen *C. albicans*. Additionally, *M. sympodialis* is known to secrete potent allergens that might increase local inflammation in injured part of gut of patients with IBD.³⁷ Recent data show that *M. sympodialis* can activate mast cells to release cysteinyl leukotrienes and enhance the mast cell IgE response, which could contribute to inflammation.³⁸ Moreover, we found

alterations of the fungi–bacteria diversity balance in CD that might be explained by modified inter-kingdom interactions.

Fungi and bacteria coexist within the gut and may directly interact. Commensal fungi and bacteria can be found together in regions of the mouse gut.¹² Antibiotics treatment in mice leads to major fungi expansions that are then reduced following antibiotic cessation,³⁹ suggesting a balance between fungal and bacterial microbiota. In addition to differences in the ITS2/16S biodiversity ratio, we noted a disease-specific pattern for the inter-kingdom network. We performed a correlation analysis aiming at globally investigating the gut microbiota equilibrium. It showed an imbalanced microbial network in patients with IBD. In UC, the number and the intensity of the correlations between fungi and bacteria were increased. This suggested tighter interactions. On the other hand, the high ITS2/16S biodiversity ratio in CD associated with the weaker correlations between fungi and bacteria suggested a disconnection between the two kingdoms. Therefore, the role of the fungi microbiota may differ according to UC versus CD pathogenesis. In UC, the restricted biodiversity in bacteria and fungi is associated with new inter-kingdom interactions that may be involved in the inflammatory process. However, CD is characterised by disrupted connections between bacterial and fungal microbiota. This suggests that their respective effects on pathogenesis may be independent. Further studies are needed to elucidate more precisely the functional connections within and between kingdoms in the gut microbiota.

Finally, although our study was not of sufficient power to statistically demonstrate an association between genotype and fungal microbiota, we identified some trends suggesting that SNPs associated with IBD or IBD severity may influence fungal microbiota dysbiosis.

CONCLUSION

In addition to elucidating bacterial dysbiosis, our study identified a distinct fungal microbiota dysbiosis in IBD that is characterised by alterations in biodiversity and composition. Moreover, here, we unravel disease-specific inter-kingdom network alterations in IBD, suggesting that, in addition to bacteria, fungi may also play a role in IBD pathogenesis. Identifying the key players of these inter-kingdom interactions and understanding how they influence or are influenced by gut inflammation are further research avenues to pursue.

MATERIALS AND METHODS

Patients and samples collection

All patients were recruited at the Gastroenterology Department of the Saint Antoine Hospital (Paris, France) and provided informed consent. A diagnosis of IBD was defined according to clinical, radiological, endoscopic and histological criteria. None of the study participants had taken antibiotics or used colon-cleansing products for at least two months prior to enrolment. Patient characteristics are presented in online supplementary table S1. Faecal samples were collected from 235 patients with IBD and 38 HS. Whole stools were collected in sterile boxes and immediately homogenised, and 0.2 g aliquots were frozen at -80°C for further analysis.

Microbiota analysis in healthy subjects and patients with IBD

Faecal samples were subjected to DNA extraction as previously described.³ The DNA samples were then used for 16S and ITS2 gene sequencing and sequence analysis (see online supplementary materials and methods). For specific analysis of *C. albicans*

and *S. cerevisiae* population, real-time quantitative PCR on the faecal DNA was done (see online supplementary materials and methods).

In vitro experiments on the response of dendritic cells to *S. cerevisiae* and *C. albicans*

BMDCs were generated as described in the online supplementary materials and methods. BMDCs were stimulated with heat-killed *C. albicans* or *S. cerevisiae* at a multiplicity of infection (MOI) of 10 during 18 h and the cell culture supernatant was used for ELISA analysis (see online supplementary materials and methods).

Genotyping is described in the online supplementary materials and methods.

Statistical analysis

GraphPad Prism V6.0 (San Diego, California, USA) was used for all analyses and graph preparation. For all graph data, the results are expressed as mean±SEM, and statistical analyses were performed using the two-tailed non-parametric Mann–Whitney U test or Kruskal–Wallis test with Dunn's multiple comparison test. Statistical significance of sample grouping for beta diversity analysis was performed using Permanova method (9999 permutations). Differences with a p value <0.05 were considered significant.

MaAsLin, a multivariate statistical framework, was used to find associations between clinical metadata and microbial community abundance.¹⁴

Correlation within microbial taxa abundance data was measured by correlation proposed by Szekely and Rizzo⁴⁰ and recommended by Simon and Tibshirani.⁴¹ It was used with success in other microbiota data analysis⁴² as well as in human genetic to identify gene network.⁴³ It is scale free and allows detecting non-linear relationship. The distance correlation is bounded by 0 and 1 and is equal to 0 if there is independence between variables. A statistical test is provided to assess for the dependence between variables and is shown powerful and easy to compute.⁴¹ In addition to the distance correlation, the Spearman's correlation sign was computed to describe heuristically the direction of association between microbial taxa. The distance correlation was computed under R-3.2.3 using the package *energy* v1.6.2. The p values were corrected using Benjamini and Hochberg to control false discovery rate. Correlation networks were built using Cytoscape 3.1.1.

To investigate correlations between fungi taxa and genotype, we performed a systematic association screening between the four major independent taxa that were previously identified to be associated with IBD (vs HS) or with flare (vs remission) (figure 3B, online supplementary figure S7B) and the 21 common candidate SNPs. All outcomes were standardised using a rank normal transformation using the function *mtransform* from the R package *GenABEL* (<http://cran.r-project.org/web/packages/GenABEL/index.html>). We used standard linear regression and adjusted all analyses for age, gender, smoking and treatment.

Author affiliations

¹Sorbonne University—UPMC Univ Paris 06, INSERM ERL 1157, Avenir Team Gut Microbiota and Immunity, UMR 7203, Saint-Antoine Hospital, AP-HP, UPMC Univ Paris 06, Paris, France

²Micalis Institute, INRA, AgroParisTech, Université Paris-Saclay, Jouy-en-Josas, France

³Department of Gastroenterology, Saint Antoine Hospital, Paris, France

⁴Inflammation-Immunopathology-Biotherapy Department (DHU i2B), Paris, France

⁵Department of Epidemiology, Harvard School of Public Health, Boston, Massachusetts, USA

⁶ILTOO Pharma, iPEPS ICM, Hôpital Pitié Salpêtrière, Paris, France

⁷Department of Medical and Surgical Sciences, University of Bologna, Bologna, Italy

⁸Division of Infectious Diseases, Department of Medicine, Brigham and Women's Hospital, Harvard Medical School, Boston, Massachusetts, USA

⁹Massachusetts Technology and Analytics, Brookline, Massachusetts, USA

Acknowledgements The authors thank Christophe Hennequin from CH Saint Antoine for providing them with the *S. cerevisiae* strain. They also thank Elodie Drouet and the Clinical Research Assistant team of Unité de Recherche Clinique de l'Est Parisien (Assistance Publique—Hôpitaux de Paris and UPMC Paris 06) for their help in obtaining the IBD patient samples.

Contributors HS conceived and designed the study, performed data analysis and wrote the manuscript. VL and SJ conducted all experiments unless otherwise indicated below. HA performed the statistical analysis of genetic data. H-PP performed the statistical analysis of the pyrosequencing data. DC and MLR performed the in vitro experiments. CL, AB, IN-L, GL, JC, PS, PL, DS, MLR, LB, and HS discussed the experiments and results.

Funding This study was supported by the Broad Medical Research Program, the INSERM cohort grant and the Association Francois Aupetit.

Competing interests None declared.

Patient consent Obtained.

Ethics approval Local ethics committee of Comite de Protection des Personnes Ile-de-France IV, IRB 00003835, Suivitheque study, registration number 2012/05NICB.

Provenance and peer review Not commissioned; externally peer reviewed.

Open Access This is an Open Access article distributed in accordance with the Creative Commons Attribution Non Commercial (CC BY-NC 4.0) license, which permits others to distribute, remix, adapt, build upon this work non-commercially, and license their derivative works on different terms, provided the original work is properly cited and the use is non-commercial. See: <http://creativecommons.org/licenses/by-nc/4.0/>

REFERENCES

- Morgan XC, Tickle TL, Sokol H, *et al.* Dysfunction of the intestinal microbiome in inflammatory bowel disease and treatment. *Genome Biol* 2012;13:R79.
- Sokol H, Pigneur B, Watterlot L, *et al.* Faecalibacterium prausnitzii is an anti-inflammatory commensal bacterium identified by gut microbiota analysis of Crohn disease patients. *Proc Natl Acad Sci USA* 2008;105:16731–6.
- Sokol H, Seksik P, Furet JP, *et al.* Low counts of Faecalibacterium prausnitzii in colitis microbiota. *Inflamm Bowel Dis* 2009;15:1183–9.
- Willing BP, Dicksved J, Halfvarson J, *et al.* A pyrosequencing study in twins shows that gastrointestinal microbial profiles vary with inflammatory bowel disease phenotypes. *Gastroenterology* 2010;139:1844–54.e1.
- Gevers D, Kugathasan S, Denson LA, *et al.* The treatment-naive microbiome in new-onset Crohn's disease. *Cell Host Microbe* 2014;15:382–92.
- Norman JM, Handley SA, Baldridge MT, *et al.* Disease-specific alterations in the enteric virome in inflammatory bowel disease. *Cell* 2015;160:447–60.
- Richard ML, Lamas B, Liguori G, *et al.* Gut fungal microbiota: the Yin and Yang of inflammatory bowel disease. *Inflamm Bowel Dis* 2015;21:656–65.
- Jawahara S, Thuru X, Standaert-Vitse A, *et al.* Colonization of mice by *Candida albicans* is promoted by chemically induced colitis and augments inflammatory responses through galectin-3. *J Infect Dis* 2008;197:972–80.
- Chen X, Yang G, Song JH, *et al.* Probiotic yeast inhibits VEGFR signaling and angiogenesis in intestinal inflammation. *PLoS ONE* 2013;8:e64227.
- Jawahara S, Poulain D. Saccharomyces boulardii decreases inflammation and intestinal colonization by *Candida albicans* in a mouse model of chemically-induced colitis. *Med Mycol* 2007;45:691–700.
- Zwolinska-Wcislo M, Brzozowski T, Budak A, *et al.* Effect of *Candida* colonization on human ulcerative colitis and the healing of inflammatory changes of the colon in the experimental model of colitis ulcerosa. *J Physiol Pharmacol* 2009;60:107–18.
- Iliev ID, Funari VA, Taylor KD, *et al.* Interactions between commensal fungi and the C-type lectin receptor Dectin-1 influence colitis. *Science* 2012;336:1314–17.
- Sokol H, Conway KL, Zhang M, *et al.* Card9 mediates intestinal epithelial cell restitution, T-helper 17 responses, and control of bacterial infection in mice. *Gastroenterology* 2013;145:591–601.e3.
- Standaert-Vitse A, Sendid B, Joossens M, *et al.* *Candida albicans* colonization and ASCA in familial Crohn's disease. *Am J Gastroenterol* 2009;104:1745–53.
- Couturier-Maillard A, Secher T, Rehman A, *et al.* NOD2-mediated dysbiosis predisposes mice to transmissible colitis and colorectal cancer. *J Clin Invest* 2013;123:700–11.
- Larsson E, Tremaroli V, Lee YS, *et al.* Analysis of gut microbial regulation of host gene expression along the length of the gut and regulation of gut microbial ecology through MyD88. *Gut* 2012;61:1124–31.

Inflammatory bowel disease

- 17 Knights D, Silverberg MS, Weersma RK, *et al.* Complex host genetics influence the microbiome in inflammatory bowel disease. *Genome Med* 2014;6:107.
- 18 Sadaghian Sadabad M, Regeling A, de Goffau MC, *et al.* The ATG16L1-T300A allele impairs clearance of pathosymbionts in the inflamed ileal mucosa of Crohn's disease patients. *Gut* 2015;64:1546–52.
- 19 Caliz R, Canet LM, Lupianez CB, *et al.* Gender-specific effects of genetic variants within Th1 and Th17 cell-mediated immune response genes on the risk of developing rheumatoid arthritis. *PLoS ONE* 2013;8:e72732.
- 20 Ferwerda B, Ferwerda G, Plantinga TS, *et al.* Human dectin-1 deficiency and mucocutaneous fungal infections. *N Engl J Med* 2009;361:1760–7.
- 21 Jostins L, Ripke S, Weersma RK, *et al.* Host-microbe interactions have shaped the genetic architecture of inflammatory bowel disease. *Nature* 2012;491:119–24.
- 22 Sainz J, Lupianez CB, Segura-Catena J, *et al.* Dectin-1 and DC-SIGN polymorphisms associated with invasive pulmonary Aspergillus infection. *PLoS ONE* 2012;7:e32273.
- 23 Ma X, Liu Y, Zhang H, *et al.* Evidence for genetic association of CARD9 and SNAPC4 with ankylosing spondylitis in a Chinese Han population. *J Rheumatol* 2014;41:318–24.
- 24 Chehoud C, Albenberg LG, Judge C, *et al.* Fungal signature in the Gut Microbiota of pediatric patients with inflammatory bowel disease. *Inflamm Bowel Dis* 2015;21:1948–56.
- 25 Bajor A, Gillberg PG, Abrahamsson H. Bile acids: short and long term effects in the intestine. *Scand J Gastroenterol* 2010;45:645–64.
- 26 Duboc H, Rajca S, Rainteau D, *et al.* Connecting dysbiosis, bile-acid dysmetabolism and gut inflammation in inflammatory bowel diseases. *Gut* 2013;62:531–9.
- 27 Selsted ME, Ouellette AJ. Mammalian defensins in the antimicrobial immune response. *Nat Immunol* 2005;6:551–7.
- 28 Wehkamp J, Schmid M, Stange EF. Defensins and other antimicrobial peptides in inflammatory bowel disease. *Curr Opin Gastroenterol* 2007;23:370–8.
- 29 Hoffmann C, Dollive S, Grunberg S, *et al.* Archaea and fungi of the human gut microbiome: correlations with diet and bacterial residents. *PLoS ONE* 2013;8:e66019.
- 30 Mukherjee PK, Sendid B, Hoarau G, *et al.* Mycobiota in gastrointestinal diseases. *Nat Rev Gastroenterol Hepatol* 2015;12:77–87.
- 31 Sivignon A, de Vallee A, Barnich N, *et al.* *Saccharomyces cerevisiae* CNCM I-3856 prevents colitis induced by AIEC bacteria in the transgenic mouse model mimicking Crohn's disease. *Inflamm Bowel Dis* 2015;21:276–86.
- 32 Edwards-Ingram L, Gitsham P, Burton N, *et al.* Genotypic and physiological characterization of *Saccharomyces boulardii*, the probiotic strain of *Saccharomyces cerevisiae*. *Appl Environ Microbiol* 2007;73:2458–67.
- 33 McFarland LV. Systematic review and meta-analysis of *Saccharomyces boulardii* in adult patients. *World J Gastroenterol* 2010;16:2202–22.
- 34 Jawhara S, Habib K, Maggiotto F, *et al.* Modulation of intestinal inflammation by yeasts and cell wall extracts: strain dependence and unexpected anti-inflammatory role of glucan fractions. *PLoS ONE* 2012;7:e40648.
- 35 Van Kruiningen HJ, Joossens M, Vermeire S, *et al.* Environmental factors in familial Crohn's disease in Belgium. *Inflamm Bowel Dis* 2005;11:360–5.
- 36 Saunders CW, Scheynius A, Heitman J. *Malassezia* fungi are specialized to live on skin and associated with dandruff, eczema, and other skin diseases. *PLoS Pathog* 2012;8:e1002701.
- 37 Buentke E, Heffler LC, Wilson JL, *et al.* Natural killer and dendritic cell contact in lesional atopic dermatitis skin—*Malassezia*-influenced cell interaction. *J Invest Dermatol* 2002;119:850–7.
- 38 Selander C, Engblom C, Nilsson G, *et al.* TLR2/MyD88-dependent and -independent activation of mast cell IgE responses by the skin commensal yeast *Malassezia sympodialis*. *J Immunol* 2009;182:4208–16.
- 39 Dollive S, Chen YY, Grunberg S, *et al.* Fungi of the murine gut: episodic variation and proliferation during antibiotic treatment. *PLoS ONE* 2013;8:e71806.
- 40 Szekely GJ, Rizzo ML. Brownian distance covariance. *The Annals of Applied Statistics*. *Ann Appl Stat* 2009;3:1236–65.
- 41 Simon N, Tibshirani R. Comment on "detecting novel associations in large data sets" by Reshef *et al.*, Science Dec 16, 2011. arXiv 2014;1401.
- 42 Liu R, Ge Y, Holden PA, *et al.* Analysis of soil bacteria susceptibility to manufactured nanoparticles via data visualization. *Beilstein J Nanotechnol* 2015;6:1635–51.
- 43 Zhang KK, Xiang M, Zhou L, *et al.* Gene-network and familial analyses uncover a gene network involving Tbx5/Osr1/Pcsk6 interaction in the second heart field for atrial septation. *Hum Mol Genet* Published Online First 2016.



Fungal microbiota dysbiosis in IBD

Harry Sokol, Valentin Leducq, Hugues Aschard, Hang-Phuong Pham, Sarah Jegou, Cecilia Landman, David Cohen, Giuseppina Liguori, Anne Bourrier, Isabelle Nion-Larmurier, Jacques Cosnes, Philippe Seksik, Philippe Langella, David Skurnik, Mathias L Richard and Laurent Beaugerie

Gut published online February 3, 2016

Updated information and services can be found at:
<http://gut.bmj.com/content/early/2016/02/03/gutjnl-2015-310746>

These include:

- Supplementary Material** Supplementary material can be found at:
<http://gut.bmj.com/content/suppl/2016/02/03/gutjnl-2015-310746.DC1.html>
- References** This article cites 41 articles, 10 of which you can access for free at:
<http://gut.bmj.com/content/early/2016/02/03/gutjnl-2015-310746#BIBL>
- Open Access** This is an Open Access article distributed in accordance with the Creative Commons Attribution Non Commercial (CC BY-NC 4.0) license, which permits others to distribute, remix, adapt, build upon this work non-commercially, and license their derivative works on different terms, provided the original work is properly cited and the use is non-commercial. See: <http://creativecommons.org/licenses/by-nc/4.0/>
- Email alerting service** Receive free email alerts when new articles cite this article. Sign up in the box at the top right corner of the online article.

Topic Collections Articles on similar topics can be found in the following collections
[Open access](#) (246)

Notes

To request permissions go to:
<http://group.bmj.com/group/rights-licensing/permissions>

To order reprints go to:
<http://journals.bmj.com/cgi/reprintform>

To subscribe to BMJ go to:
<http://group.bmj.com/subscribe/>