



**HAL**  
open science

# MOSAIIC: City-Level Agent-Based Traffic Simulation Adapted to Emergency Situations

Guillaume Czura, Patrick Taillandier, Pierrick Tranouez, Éric Daudé

► **To cite this version:**

Guillaume Czura, Patrick Taillandier, Pierrick Tranouez, Éric Daudé. MOSAIIC: City-Level Agent-Based Traffic Simulation Adapted to Emergency Situations. International Conference on Social Modeling and Simulation, plus Econophysics Colloquium 2014, Oct 2014, Kobe, Japan. pp.265-274, 10.1007/978-3-319-20591-5\_24 . hal-01267004

**HAL Id: hal-01267004**

**<https://hal.science/hal-01267004>**

Submitted on 4 Feb 2016

**HAL** is a multi-disciplinary open access archive for the deposit and dissemination of scientific research documents, whether they are published or not. The documents may come from teaching and research institutions in France or abroad, or from public or private research centers.

L'archive ouverte pluridisciplinaire **HAL**, est destinée au dépôt et à la diffusion de documents scientifiques de niveau recherche, publiés ou non, émanant des établissements d'enseignement et de recherche français ou étrangers, des laboratoires publics ou privés.

## Metadata of the chapter that will be visualized online

---

Chapter Title	MOSAIC: City-Level Agent-Based Traffic Simulation Adapted to Emergency Situations	
Copyright Year	2015	
Copyright Holder	The Author(s)	
Author	Family Name	<b>Czura</b>
	Particle	
	Given Name	<b>Guillaume</b>
	Suffix	
	Email	guillaume.czura@gmail.com
Author	Family Name	<b>Taillandier</b>
	Particle	
	Given Name	<b>Patrick</b>
	Suffix	
	Email	patrick.taillandier@univ-rouen.fr
Author	Family Name	<b>Tranouez</b>
	Particle	
	Given Name	<b>Pierrick</b>
	Suffix	
	Email	pierrick.tranouez@univ-rouen.fr
Author	Family Name	<b>Daudé</b>
	Particle	
	Given Name	<b>Éric</b>
	Suffix	
	Email	eric.daude@univ-rouen.fr
Abstract	<p>In this paper, we present MOSAIC, an agent-based model to simulate the road traffic of a city in the context of a catastrophic event. Whether natural (cyclone, earthquake, flood) or human (industrial accident) in origin, catastrophic situations modify both infrastructures (buildings, road networks) and human behaviors, which can have a huge impact on human safety. Because the heterogeneities of human behaviors, of land-uses and of network topology have a great impact on the traffic flows, the agent-based modeling is particularly adapted to this subject. In this paper, we focus on the new traffic model itself: the way geographical data is used to build a network, the various behaviors of our agents, from the individual to the collective level.</p>	

---

# Chapter 24

## MOSAIC: City-Level Agent-Based Traffic Simulation Adapted to Emergency Situations

Guillaume Czura, Patrick Taillandier, Pierrick Tranouez, and Éric Daudé

**Abstract** In this paper, we present MOSAIC, an agent-based model to simulate the road traffic of a city in the context of a catastrophic event. Whether natural (cyclone, earthquake, flood) or human (industrial accident) in origin, catastrophic situations modify both infrastructures (buildings, road networks) and human behaviors, which can have a huge impact on human safety. Because the heterogeneities of human behaviors, of land-uses and of network topology have a great impact on the traffic flows, the agent-based modeling is particularly adapted to this subject. In this paper, we focus on the new traffic model itself: the way geographical data is used to build a network, the various behaviors of our agents, from the individual to the collective level.

### 24.1 Introduction

Nowadays, traffic simulations are often used by urban planners to make decisions concerning road infrastructures. Many models have been developed these last years. These models are grouped according to their levels of representation: macroscopic [1], mesoscopic [2], microscopic [3] and nanoscopic [4].

A modeling approach that is particularly well-fitted for micro-simulation is agent-based modeling. It allows to consider the heterogeneity of driver behaviors and to take into account the global impact of local processes.

Such approach is increasingly used as many frameworks allowing urban planners to easily build their own scenarios (MATSIM [5], SUMO [6], AgentPolis [7]) are

- 
- AQ1 G. Czura (✉) • P. Taillandier  
UMR CNRS IDEES 6266, University of Rouen, Rouen, France
- AQ2 e-mail: [guillaume.czura@gmail.com](mailto:guillaume.czura@gmail.com); [patrick.taillandier@univ-rouen.fr](mailto:patrick.taillandier@univ-rouen.fr)
- P. Tranouez  
EA LITIS 4108, University of Rouen, Mont-Saint-Aignan, France
- AQ3 e-mail: [pierrick.tranouez@univ-rouen.fr](mailto:pierrick.tranouez@univ-rouen.fr)
- É. Daudé  
UMIFRE CNRS-MAE 20, CSH of Delhi  
e-mail: [eric.daude@univ-rouen.fr](mailto:eric.daude@univ-rouen.fr)

developed. However, if these frameworks are often well-adapted to traffic in normal condition, very few tools allow the simulation of uncommon events such as natural or technological hazards. Actually, in this context, being able to simulate the traffic in a realistic way while taking into account the road infrastructure (crossing, traffic signals. . .), the properties of the cars (length, max speed. . .) and the personality of the drivers (tendency to respect the norms) is mandatory. Most other frameworks work at a higher level, supposing regularities and statistical behaviors. But in a disaster individual decisions can lead to important collective consequences. Two drivers can leave their car, thus blocking hundred behind them. Drivers may react to things they see, fleeing by taking one-way streets in reverse, creating a jam in the road leading to this street. Individual-based modeling and micro-simulation are the only way to incorporate those possibilities, not just origin destination matrices and shortest path algorithms. For modelers without high level programming skills, adapting these platforms to specific application contexts is out of reach as they require to write code in JAVA or C++. As a result, many simulators are still developed from scratch or with a generic platform (e.g. [8–10]).

In this paper, we propose a new generic model dedicated to traffic simulation based on the work of [10–12] called MOSAIIC. This model, which have been implemented using the GAMA modeling platform [13], is easily tunable through a specific modeling language. Moreover, this model manages road infrastructures and traffic signals, input from real geographical data, as well as a detailed implementation of cars and drivers: choice of destination, acceleration and deceleration according to the surrounding traffic and the regulation, lanes changing, crossroads crossing etc. In addition, it allows to take into account the personality of each driver: respect of norms (traffic light, right of way, speed limits. . .), the management of tailgating.

The paper is organized as follows: Sect. 24.2 is dedicated to the presentation of the generic MOSAIIC Agent-based model. Section 24.3 concludes and presents some perspectives.

## 24.2 The MOSAIIC Agent-Based Traffic Model

As stated in the previous section, we chose to implement the model with the GAMA platform. The GAMA platform provides modelers—who quite often are not developers—with tools to develop highly complex models. In particular, it offers a complete modeling language (GAML: GAmA Modeling Language) and an integrated development environment that allows modelers to quickly and easily build models. Indeed, the GAML language is as simple to use and to understand as the Netlogo modeling language [14] and does not require high level programming skills. In addition, GAMA provides different features that can be used by modelers to develop traffic models. In particular, GAMA allows to simply load GIS data (shapefiles, OSM data. . .), to define graphs from polyline geometries, to compute

shortest paths and to move agents on a polyline networks. At last, it integrates an extension dedicated to fine-scale traffic simulation [15].

### 24.2.1 Structure of the Network

A key issue for our model is to be versatile enough to be usable with most of classic road GIS data, in particular OSM<sup>1</sup> data. We choose then to use a classic format for the roads and nodes (Fig. 24.1). Each road is a polyline composed of road sections (segments). Each road has a target node and a source node. Each node knows all its input and output roads. A road is considered as directed. For bidirectional roads, 2 roads have to be defined corresponding to both directions. Note that for some GIS data, only one road is defined for bidirectional roads, and the nodes are not explicitly defined. In this case, it is very easy, using the GAML language, to create the reverse roads and the corresponding nodes (it only requires few lines of GAML).

A road can be composed of several lanes (Fig. 24.2). The vehicles are able to change at any time its lane and even use a lane of the reverse road. In this case, the vehicle “cross” the road (for example going from Road 2 to Road 1 in the Fig. 24.1). Legal speed is another property of the modeled road. Note that even if the user of the model has no information about these values for some of the roads (the OSM data are often incomplete), it is very easy using the GAML language to fill in the missing values by a default values. It is also possible to change these values dynamically

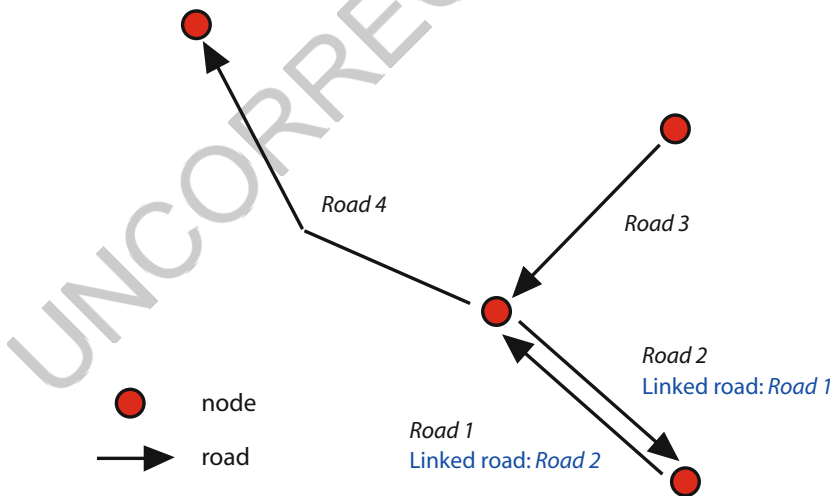
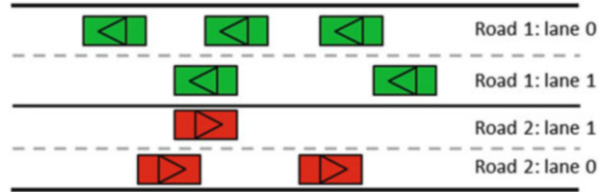


Fig. 24.1 Roads and nodes description in the model

<sup>1</sup>OSM: OpenStreetMap.

Fig. 24.2 Roads and lanes description in the model



during the simulation (for example, to model that after an accident, a lane of a road 84  
is closed or that the speed of a road is decreased by the authorities). 85

In order to give the modelers the possibility to simply add dynamics to these 86  
infrastructures (e.g. to add a deterioration dynamic to roads), we chose to represent 87  
all the road infrastructures (road, traffic signals) as agents. 88

For each roads, a list of predefined variables is defined. Some of them are linked 89  
to the road properties: 90

- *lanes*: number of lanes. 91
- *maxspeed*: maximum authorized speed on the road. 92

In the same way, for each nodes, a list of predefined variables is defined. Amongst 93  
them, the most important is the list of stop signals, and for each stop, the list of roads 94  
concerned by it. 95

The complete list of variables for roads and nodes can be founded in [15]. 96

### 24.2.2 Driver Agents 97

Concerning the driver agents, we propose a driving model based on the one proposed 98  
by Tranouez et al. [10]. Each driver agent has a planned trajectory that consists in a 99  
succession of edges. When the driver agent enters a new edge, it first chooses its lane 100  
according to the traffic density, with a bias for the rightmost lane. The movement 101  
on an edge is inspired by the Intelligent Driver Model [16]. A difference with our 102  
driving model is that in our model the drivers have the possibility to change their 103  
lane at any time (and not only when entering a new edge). In addition, we have 104  
defined more variables for the driver agents in order to give more possibilities for 105  
the modelers to tune the driver behavior. 106

The driver agents have several variables that will define the car properties and the 107  
personality of the driver, ranging from the length of the vehicle to the probabilities 108  
of respecting right of way. The values of these variables can be modified at any time 109  
during the simulation. For example, the probability to take a reverse road can be 110  
increased if the driver is stuck for several minutes behind a slow vehicle. 111

**24.2.3 Dynamics of the Model** 112

One step of the simulation represents 1 s. The dynamics of the model is based six consecutive steps: 113  
114

1. Each road agent computes the potential traffic jams 115
2. Each traffic signal computes its new state. 116
3. New drivers arrive in the simulation 117
4. Drivers that do not have a path to reach their destination (or that should recompute them owing to changes in their context) compute it. 118  
119
5. Drivers drive toward their final target. Note that the driving step is asynchronous. agents move one after the other. The order of activation of the driver Agents depend on their distance to the end of their current road: the drivers closer to the road end are activated first. 120  
121  
122  
123
6. Drivers that reach their final target are removed from the simulation 124

**24.2.3.1 Traffic Jam Management** 125

AQ5

Each road has the capability to compute the traffic jams on it. A traffic jam is defined as the presence on the road of at least *number\_threshold* drivers of which the speed is inferior to *speed\_threshold*. The *number\_threshold* variable depends on the capacity of the road (will be lower for a small road than for a long road) and the *speed\_threshold* variable on the *max\_speed* on the road. A traffic jam becomes real for drivers if it exists for at least *time\_threshold*. 126  
127  
128  
129  
130  
131

**24.2.3.2 Traffic Signal Update** 132

Each traffic signal (only traffic light in our model) update its state counter. 133

**24.2.3.3 New Driver Arrival** 134

According to the current time and the data provided, a certain number of drivers are created. We assume that the model user has data (scenario) concerning the number of drivers departing at each period of time (for instance, there are often more drivers departing at 8AM than at 11PM). These drivers are located on one of the nodes according to the scenario data. Indeed, we assume here that the user has also data concerning the Origin and Destination of drivers. According to this data, a probability to use each node as an origin is computed and used to define the initial location of each new driver. In the same way, a probability to use each node as a destination according to a given origin is computed and used to define the final target of each new driver. 135  
136  
137  
138  
139  
140  
141  
142  
143  
144

#### 24.2.3.4 Computation of the Path

145

A driver can compute the path between its current location and its final target using a graph structure (each road will be an edge of the graph). In order to do so, the driver will use its own weights concerning for the edge. We defined four profiles of driver (i.e. four types of weight):

- minimize the travel distance 150
- minimize the travel time 151
- minimize the travel time and favorise roads with many lanes 152
- minimize the travel time and avoid traffic lights 153

In addition, when a driver perceived that its path will cross at least one known uncommon event (traffic jam, blocked roads), it will test a the *proba\_avoid\_event* probability to define if it will try to avoid it or not. If it tries to avoid it, it has two specific behaviors that will depends on the test of the *proba\_know\_map* probability. If the driver knows the map, it will compute a new shortest path taking into account all the information it has concerning uncommon events. In the other case, it will just try to choose through heuristics roads without uncommon events that will allow it to move closer to its final target.

#### 24.2.3.5 Driving Step

162

The driving action of the driver agents work as follow: while the agent has the time to move, it first defines the speed he tries to reach based on different variables. Then, the agent moves toward the current target and computes the remaining time (Fig. 24.3). More specifically, each driver has a remaining time which is initially set to 1 s. Remaining time decreases after it drives, and it can continue to drive until remaining time becomes 0 or it has to stop at the intersection.

During the movement, the agents can change lanes (see below). If the agent reaches its final target, it stops; if it reaches its current target (that is not the final target), it tests if it can cross the intersection to reach the next road of the current path. If it is possible, it defines its new target and continues to move. The function that defines if the agent crosses or not the intersection to continue to move works as follow (Fig. 24.4): first, it updates its known uncommon events by adding all the uncommon events it perceives (the ones at a distance lower than its *perception\_distance*). If its current path crosses an uncommon event, it will apply its path computation action. After that, it tests if the road is blocked by a driver at the intersection (if the road is blocked, the agent does not cross the intersection). Then, if there is at least one stop signal at the intersection (traffic signal, stop sign. . .), for each of these signals, the agent tests its probability to respect or not the signal (note that the agent has a specific probability to respect each type of signals). If there is no stopping signal or if the agent does not respect it, the agent checks if there is at least one vehicle coming from a right (or left if the agent drives on the left side) road at a distance lower than its security distance (i.e. minimal distance to the closest vehicle



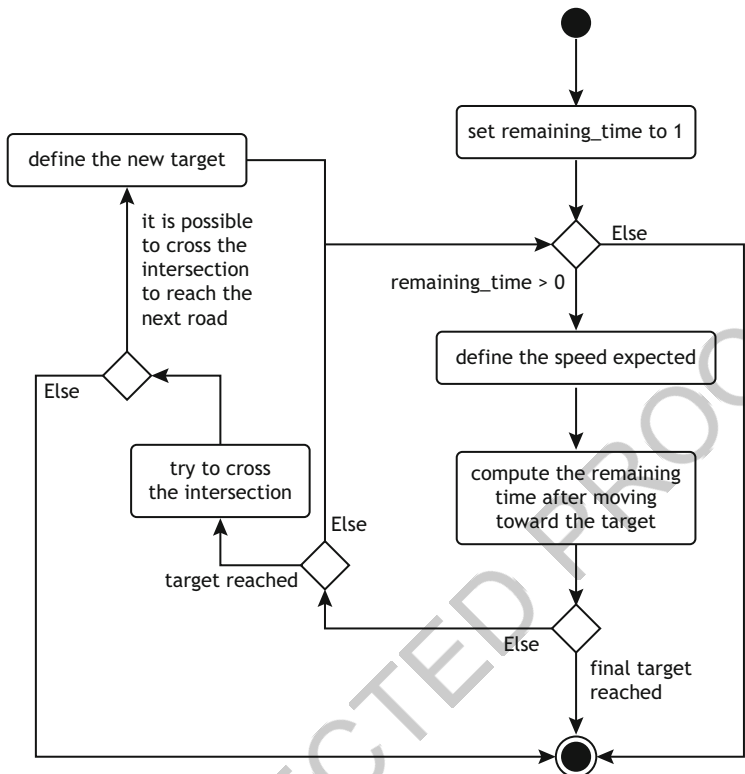


Fig. 24.3 Agent driving action algorithm

from which the agent feels safe). If there is one, it tests its probability to respect 185  
this priority. If there is no vehicle from the right roads or if it chooses to do not 186  
respect the right priority, it tests if it is possible to cross the intersection to its target 187  
road without blocking the intersection (i.e. if there is enough space in the target 188  
road). If it can cross the intersection, it crosses it; otherwise, it tests its probability 189  
to block the node: if the agent decides nevertheless to cross the intersection, then 190  
the perpendicular roads will be blocked at the intersection level (these roads will be 191  
unblocked when the agent is going to move). 192

Concerning the movement of the driver agents on the current road, the agent 193  
moves from a section of the road (i.e. segment composing the polyline) to another 194  
section according to the remaining time and to the maximal distance that the agent 195  
can moves (Fig. 24.4). For each road section, the agent first computes the initial 196  
remaining distance it can travel according the remaining time and its speed (i.e. 197  
max distance it can travel if there is no other vehicle). Then, the agent computes 198  
its security distance (i.e. minimal distance to the next vehicle from which the 199  
agent feels safe) according to its speed and its *security\_distance\_coeff*. While its 200  
remaining distance is not null, the agent computes the maximal distance it can travel 201

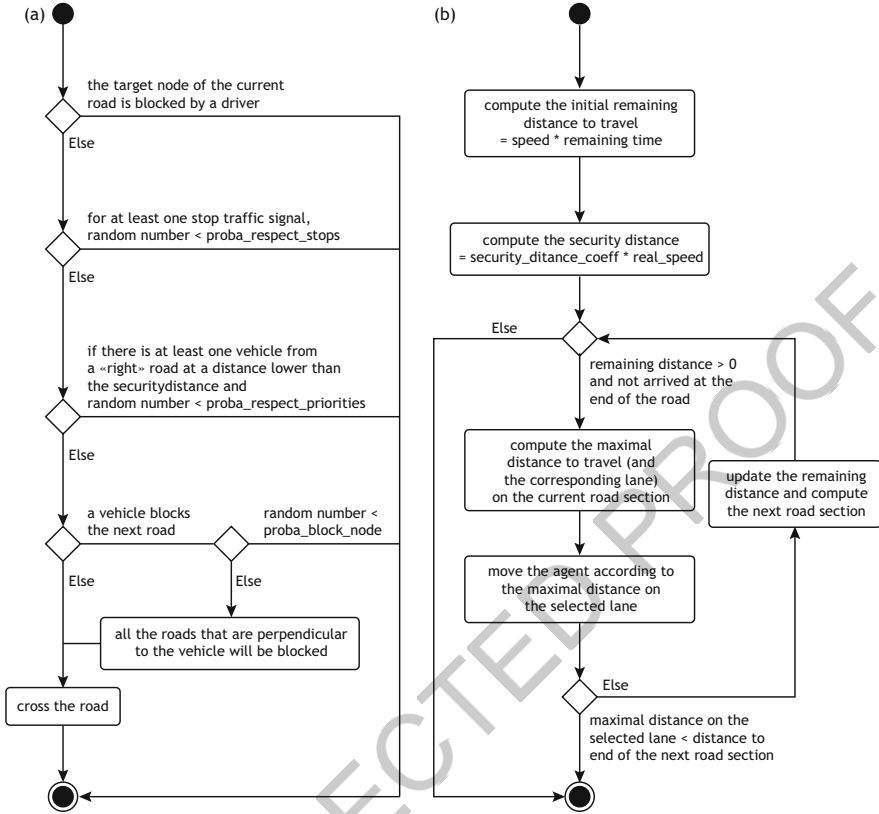


Fig. 24.4 (a) Crossing of an intersection (case where the driver drives on the right side of the road) and (b) Move on the current road algorithms

(and the corresponding lane), then it moves according to this distance (and updates its current lane if necessary). If the agent is not blocked by another vehicle and can reach the end of the road section, it updates its current road section and continues to move. The agent changes lanes if it computes it could go further in its time slot on another lane.

Figure 24.5 shows a snapshot of a simulation carried out for the agglomeration of Rouen (France).

### 24.3 Conclusion

In this paper, we presented a new generic traffic model. From this model, which was implemented with the GAMA platform, traffic simulations with a detailed representation of the driver operational behaviors can be built. In particular, it

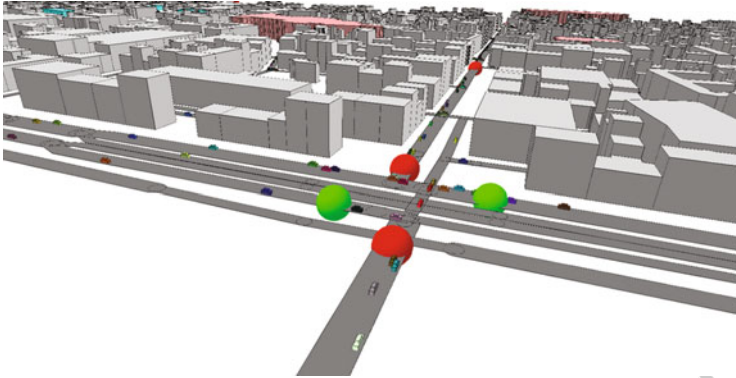


Fig. 24.5 MOSAIIC traffic model applied to Rouen agglomeration, France

models the road infrastructures and traffic signals, the lane changes of the drivers 213  
and their respect of norms. In comparison to the use of existing traffic simulation 214  
frameworks, the advantage of our model is to enable modelers to easily define 215  
models adapted to their application context. 216

We plan to enrich the model in order to make the driver agents more cognitive, 217  
in particular concerning their choice of path and their adaptation to their current 218  
context in emergency situation. For this, we plan to give the driver agents a BDI 219  
architecture that can be based on [17, 18]. 220

If the model is already capable to simulate tens of thousands of driver agents, 221  
we plan to improve its efficiency by using High Performance Computing and in 222  
particular distribution on GPU to enable large scale simulations with millions of 223  
driver agents. 224

At last, we plan as well to develop new tools to help people to prepare their data. 225  
The goal will be to offer the possibility from incomplete OSM data to automatically 226  
fill the missing attributes, and to create a consistent network (with its infrastructure 227  
and traffic signals). A particular attention will be brought on traffic signals and traffic 228  
lights. 229

**Acknowledgements** This research was funded by the project MOSAIIC, funded by the Region 230  
Haute-Normandie, the Large-Scale Research Network TERA and the Technological Risk Control 231  
Network (TRCN). 232

**Open Access** This book is distributed under the terms of the Creative Commons Attribution Non- 233  
commercial License which permits any noncommercial use, distribution, and reproduction in any 234  
medium, provided the original author(s) and source are credited. 235

## References

236

1. Kotsialos A, Papageorgiou M, Diakaki C, Pavlis Y, Middleham F (2002) *IEEE Trans Intell Transp Syst* 3(4):282 237  
238
2. Waldeer K (2004) *Transp Theory Stat Phys* 33(1):31 239
3. Miller JE, Hunt DJ, Abraham JE, Salvini PA (2004) *Comput Environ Urban Syst* 28:9 240
4. Daiheng N (2003) *Intelligent vehicles symposium*, pp 47–52 241
5. Balmer M, Rieser M, Meister K, Charypar D, Lefebvre N, Nagel K, Axhausen K (2009) *Multi-agent systems for traffic and transportation engineering*. Information Science Reference, Hershey, pp 57–78 242  
243  
244
6. Krajzewicz D, Erdmann J, Behrisch M, Bieker L (2012) *Int J Adv Syst Meas* 5(3&4):128 245
7. Jakob M, Moler Z (2013) *Proceedings of the 16th IEEE intelligent transportation systems conference (ITSC 2013)* 246  
247
8. Horn M (2002) *Transp Res A Policy Pract* 36(2):167 248
9. Banos A, Marilleau N, Team M (2012) *ECSS* 249
10. Tranouez P, Daudé E, Langlois P (2012) *J Nonlinear Syst Appl* 3(2):98 250
11. Daudé É, Provitolo D, Dubos-Paillard E, Gaillard D, Eliot E, Langlois P, Zimmermann E, Saint-Gérand T (2009) *From system complexity to emergent properties*. Springer, Berlin/Heidelberg, pp 165–178 251  
252  
253
12. Daudé É, Tranouez P, Langlois P (2009) *The 3rd international conference on complex systems and applications*, pp 116–121 254  
255
13. Grignard A, Taillandier P, Gaudou B, Vo D, Huynh N, Drogoul A (2013) *PRIMA 2013: principles and practice of multi-agent systems*. Lecture Notes in computer science, vol 8291. Springer, Berlin, pp 117–131 256  
257  
258
14. Wilensky U (1999) *Netlogo*. Technical report. Center for Connected Learning and Computer-Based Modeling, Northwestern University, Evanston, IL. <http://www.ccl.northwestern.edu/netlogo/> 259  
260  
261
15. Taillandier P (2014) *Eighth international workshop on agents in traffic and transportation (ATT)* 262  
263
16. Kesting A, Treiber M, Helbing D (2007) *J Transp Res Board* 1999:86 264
17. Taillandier P, Therond O, Gaudou B (2012) *International environmental modelling and software society (iEMSs)* 265  
266
18. Le VM, Gaudou B, Taillandier P, Vo DA (2013) *Advanced methods and technologies for agent and multi-agent systems (KES-AMSTA)*. *Frontiers in artificial intelligence and applications*, vol 252. IOS Press, Amsterdam, pp 395–403 267  
268  
269

AUTHOR QUERIES

- AQ1. Please note the author 'Guillaume Czura' has been set as corresponding author. Please check.
- AQ2. "City/Country" has been inserted in the affiliation field. Please check if it is correct.
- AQ3. Please provide a complete affiliation for the author "Éric Daudé".
- AQ4. Please note that the '.' has been changed to '...' in the sentence 'traffic light, right of way...'. Please check and correct if necessary.
- AQ5. Please check if the section headings are assigned to appropriate levels.

UNCORRECTED PROOF