



HAL
open science

The Mutualistic Side of Wolbachia–Isopod Interactions: Wolbachia Mediated Protection Against Pathogenic Intracellular Bacteria

Christine Braquart-Varnier, Mine Altinli, Romain Pigeault, Frédéric D.
Chevalier, Pierre Grève, Didier Bouchon, Mathieu Sicard

► **To cite this version:**

Christine Braquart-Varnier, Mine Altinli, Romain Pigeault, Frédéric D. Chevalier, Pierre Grève, et al.. The Mutualistic Side of Wolbachia–Isopod Interactions: Wolbachia Mediated Protection Against Pathogenic Intracellular Bacteria. *Frontiers in Microbiology*, 2015, 6, 10.3389/fmicb.2015.01388 . hal-01266760

HAL Id: hal-01266760

<https://hal.science/hal-01266760v1>

Submitted on 27 Mar 2019

HAL is a multi-disciplinary open access archive for the deposit and dissemination of scientific research documents, whether they are published or not. The documents may come from teaching and research institutions in France or abroad, or from public or private research centers.

L'archive ouverte pluridisciplinaire **HAL**, est destinée au dépôt et à la diffusion de documents scientifiques de niveau recherche, publiés ou non, émanant des établissements d'enseignement et de recherche français ou étrangers, des laboratoires publics ou privés.



The Mutualistic Side of *Wolbachia*–Isopod Interactions: *Wolbachia* Mediated Protection Against Pathogenic Intracellular Bacteria

Christine Braquart-Varnier^{1†‡}, Mine Altinli^{2†‡}, Romain Pigeault³, Frédéric D. Chevalier⁴, Pierre Grève¹, Didier Bouchon¹ and Mathieu Sicard^{2*}

¹ Laboratoire Écologie et Biologie des Interactions – Equipe Écologie, Évolution, Symbiose – UMR CNRS 7267, Université de Poitiers, Poitiers, France, ² Institut des Sciences de l'Évolution, CNRS—Université de Montpellier-IRD (UMR 5554), Montpellier, France, ³ IRD 224-Université de Montpellier, Maladies Infectieuses et Vecteurs: Écologie, Génétique, Évolution et Contrôle, Équipe Interaction Parasitaires et Adaptation, Montpellier, France, ⁴ Texas Biomedical Research Institute, San Antonio, TX, USA

OPEN ACCESS

Edited by:

Puttaraju H. P.,
Bangalore University, India

Reviewed by:

Amparo Latorre,
University of Valencia, Spain
Ewa Anna Chrostek,
Max Planck Institute for Infection
Biology, Germany

*Correspondence:

Mathieu Sicard
mathieu.sicard@univ-montp2.fr

[†]These authors have contributed
equally to this work.

[‡]These authors are co-first authors.

Specialty section:

This article was submitted to
Evolutionary and Genomic
Microbiology,
a section of the journal
Frontiers in Microbiology

Received: 30 June 2015

Accepted: 23 November 2015

Published: 16 December 2015

Citation:

Braquart-Varnier C, Altinli M,
Pigeault R, Chevalier FD, Grève P,
Bouchon D and Sicard M (2015)
The Mutualistic Side
of *Wolbachia*–Isopod Interactions:
Wolbachia Mediated Protection
Against Pathogenic Intracellular
Bacteria. *Front. Microbiol.* 6:1388.
doi: 10.3389/fmicb.2015.01388

Wolbachia is a vertically transmitted endosymbiont whose radiative success is mainly related to various host reproductive manipulations that led to consider this symbiont as a conflictual reproductive parasite. However, lately, some *Wolbachia* have been shown to act as beneficial symbionts by protecting hosts against a broad range of parasites. Still, this protection has been mostly demonstrated in artificial *Wolbachia*-host associations between partners that did not co-evolved together. Here, we tested in two terrestrial isopod species *Armadillidium vulgare* and *Porcellio dilatatus* whether resident *Wolbachia* (native or non-native) could confer protection during infections with *Listeria ivanovii* and *Salmonella typhimurium* and also during a transinfection with a *Wolbachia* strain that kills the recipient host (i.e., wVulC in *P. dilatatus*). Survival analyses showed that (i) *A. vulgare* lines hosting their native *Wolbachia* (wVulC) always exhibited higher survival than asymbiotic ones when infected with pathogenic bacteria (ii) *P. dilatatus* lines hosting their native wDil *Wolbachia* strain survived the *S. typhimurium* infection better, while lines hosting non-native wCon *Wolbachia* strain survived the *L. ivanovii* and also the transinfection with wVulC from *A. vulgare* better. By studying *L. ivanovii* and *S. typhimurium* loads in the hemolymph of the different host-*Wolbachia* systems, we showed that (i) the difference in survival between lines after *L. ivanovii* infections were not linked to the difference between their pathogenic bacterial loads, and (ii) the difference in survival after *S. typhimurium* infections corresponds to lower loads of pathogenic bacteria. Overall, our results demonstrate a beneficial effect of *Wolbachia* on survival of terrestrial isopods when infected with pathogenic intracellular bacteria. This protective effect may rely on different mechanisms depending on the resident symbiont and the invasive bacteria interacting together within the hosts.

Keywords: *Wolbachia*, infection, immunocompetence, *Listeria*, *Salmonella*, terrestrial isopods, *Armadillidium vulgare*, *Porcellio dilatatus*

INTRODUCTION

Symbioses, defined as intimate interactions between two or more species, can range from mutualism, where both partners benefit from the relationship, to parasitism where one of the partners exploits the other. In order to be maintained and become widespread in the host population, vertically transmitted symbionts adopt some strategies to manipulate their host's reproduction and/or to provide their host with fitness benefits (Haïne, 2008). The advantages of beneficial symbiotic relations can generally be categorized into two main functions: nutrition or protection (Douglas, 2011). In the case of vertically transmitted primary symbionts (i.e., via oocyte), this benefit is usually nutritional, through which the symbiont improves the specialized diet of the host, providing essential nutrients such as amino acids or vitamins (Gross et al., 2009). There is also clear evidence that symbionts can be involved in protection against predators and pathogens (Scarborough et al., 2005; Hedges and Johnson, 2008; Jaenike et al., 2010; Xie et al., 2010). This protection might be achieved with a direct interference with the pathogens or predators by the production of toxic compounds (Davidson et al., 2001; Jaenike and Perlman, 2002). Alternatively this protection can be caused indirectly by the competition between the symbiont and the pathogens for limited resources (Caragata et al., 2013) or by the modulation of host physiology including immune system (de Souza et al., 2009; Kaiser et al., 2010; Weiss et al., 2011). Although the underlying mechanisms of protective symbiosis are not yet unraveled (Douglas, 2011), the existence of protection against pathogens mediated by the presence of a vertically transmitted symbiont is supported by many studies (Haïne, 2008; Brownlie and Johnson, 2009).

Even though symbiotic relationships are abundant in both vertebrates and invertebrates, an outstanding diversity of vertically transmitted symbionts has been shown only in the latter (Yen and Barr, 1971; Hurst et al., 1999; Stouthamer et al., 1999; Dunn and Smith, 2001; von der Schulenburg et al., 2001). Being one of the most common vertically transmitted symbiotic bacteria among Cuticulata, *Wolbachia* are found widespread in arthropods and may infect up to 50% of the arthropod species (Weinert et al., 2015). The success of their vertical transmission mainly relies on the manipulation of the reproduction of their hosts in different ways. For example, feminization induced by *Wolbachia* forces infected genetic males to develop in functional females, thus becoming able to transmit *Wolbachia*, resulting in a female bias in the population (Bouchon et al., 2008). Another example of a host reproduction manipulation strategy of *Wolbachia* is the cytoplasmic incompatibility (CI) that gives a fitness advantage to infected females by causing mortality of the embryos when uninfected females copulate with infected males (Serbus et al., 2008). In addition to the ability of the *Wolbachia* to manipulate their hosts reproduction, some interactions have been reported to be detrimental on various host life history traits, including body size (Hoffmann and Turelli, 1988), fecundity (Hoffmann et al., 1990; Fleury et al., 2000), survival (Fleury et al., 2000; Tagami et al., 2001), larval competitiveness (Huïgens et al., 2004), mating choice (Rigaud and Moreau, 2004) as well as the hosts' immunity

(Fytrou et al., 2006; Braquart-Varnier et al., 2008; Sicard et al., 2010).

Recent studies showed that *Wolbachia* is not always conflictual and may also act as a mutualist with its hosts by being protective (i.e., increasing their host's survival during a pathogenic challenge; Teixeira et al., 2008; Gross et al., 2009; Bian et al., 2010; Glaser and Meola, 2010; Zélé et al., 2012; Eleftherianos et al., 2013) or improving nutrition (Hosokawa et al., 2010). The first protective mutualistic effect of the presence of a native *Wolbachia* (*wMel*) against several viruses has been demonstrated in *Drosophila melanogaster* (Hedges et al., 2008; Teixeira et al., 2008). However, this protection seems limited to viruses (Rottschaefer and Lazzaro, 2012; Ye et al., 2013). On the other hand, in mosquitoes, in addition to the reports of a protective effect against viruses (i.e., Dengue, Chikungunya, in *Aedes aegypti* and *Aedes albopictus*; Moreira et al., 2009), protection against protozoans (Moreira et al., 2009), filarial nematodes (Kambris et al., 2009), as well as two bacteria species (i.e., *Erwinia carotovora* and *Salmonella typhimurium*; Kambris et al., 2009; Ye et al., 2013) have been linked to the presence of *Wolbachia*. However, all these observations were made using mosquitoes artificially transinfected with *wMel* and *wMelpop* from *Drosophila* (but see Zélé et al., 2012). Though interesting, these situations do not represent natural symbiotic systems where *Wolbachia* would have evolved toward being mutualistic by conferring protection to their host against pathogens.

The *Wolbachia*-isopod symbiotic systems constitute tractable experimental models for transinfection experiments and therefore to study the effects of native and non-native *Wolbachia* on the phenotype of their hosts (Moret et al., 2001; Le Clec'h et al., 2013). Besides, previous studies have been conducted to understand the effects of the *Wolbachia* on the hosts' immune parameters. These studies have pointed out an immunodepressing effect of the presence of *Wolbachia* during ageing of the terrestrial isopod *Armadillidium vulgare*: 2-years-old females exhibited lower phenoloxidase (PO) activity (Sicard et al., 2010), lower hemocyte density and sometimes even bacteremia in their hemolymph (Braquart-Varnier et al., 2008). The reported presence, in some individuals, of bacteria from the environment suggests that those micro-organisms may constitute a threat in some cases, especially in older animals and/or when the isopod's immune parameters are low (Braquart-Varnier et al., 2008). However, in younger individuals (i.e., 1-year-old animals) of two isopod species (*A. vulgare* and *Porcellio dilatatus*), no such negative effects of *Wolbachia* on immune parameters were observed suggesting that *Wolbachia* would only cause immunodepression in older animals (Sicard et al., 2010; Pigeault et al., 2014).

Considering the contrasted influence of *Wolbachia* on isopods' (i) immune parameters (i.e., PO activity, hemocyte density, phagocytosis, proportion of hemocyte types; Braquart-Varnier et al., 2008; Sicard et al., 2010; Pigeault et al., 2014) and (ii) immune gene expression (Chevalier et al., 2012), the impact of the presence of *Wolbachia* on their host immunocompetence when facing a pathogen had to be directly assessed. As some environmental bacteria were detected, in some cases, in the isopod hemolymph, it appeared pertinent to study the

TABLE 1 | Isopod lines used in this study and their main characteristics: gender of studied animals, their origins, their symbiotic condition [asymbiotic, symbiotic (naturally or experimentally infected)], the *Wolbachia* strain that they harbor.

Species	Line	Gender	Origin	<i>Wolbachia</i> status	Resident <i>Wolbachia</i> strain	Pathogen injections
<i>Armadillidium vulgare</i>	WXa	♀	Denmark	Asymbiotic	—	<i>Salmonella typhimurium</i> and <i>Listeria ivanovii</i>
	WXw	♀	Denmark	Symbiotic	wVulC ^{WX}	<i>S. typhimurium</i> and <i>L. ivanovii</i>
	BF	♀	France	Asymbiotic	—	<i>S. typhimurium</i> and <i>L. ivanovii</i>
	BFwVulC	♀	BF line	Experimentally infected	wVulC ^{ZN}	<i>S. typhimurium</i> and <i>L. ivanovii</i>
	ZN	♀	France	Symbiotic	wVulC ^{ZN}	<i>S. typhimurium</i> and <i>L. ivanovii</i>
<i>Porcellio dilatatus</i>	dilatatus A	♀ and ♂	France	Asymbiotic	—	wVulC ^{WX} , <i>S. typhimurium</i> and <i>L. ivanovii</i>
	dilatatus A- wDil	♀ and ♂	dilatatus A line	Experimentally infected	wDil	wVulC ^{WX} , <i>S. typhimurium</i> and <i>L. ivanovii</i>
	dilatatus A- wCon	♀ and ♂	dilatatus A line	Experimentally infected	wCon	wVulC ^{WX} , <i>S. typhimurium</i> and <i>L. ivanovii</i>

impact of resident *Wolbachia* on the survival of terrestrial isopods against bacterial pathogens by injecting them directly into the hemolymph. Despite comprehensive investigations, no specific cultivable bacterial pathogens of terrestrial isopod have been described to date (Braquart-Varnier and Sicard, personal observation). Thus, we chose to investigate this question with two intracellular bacterial pathogens ecologically relevant and already demonstrated to be pathogenic toward arthropods: the Gram-positive *Listeria ivanovii* and the Gram-negative *S. typhimurium*, which were both detected in soil samples (Jacobsen and Bech, 2012; Sauders et al., 2012). In parallel with our investigation on ‘conventional’ bacterial pathogens, we also studied the impact of a resident vertically transmitted *Wolbachia* on the detrimental effect caused by the transinfection of the wVulC strain from *A. vulgare* to *P. dilatatus* (Le Clec’h et al., 2012). Indeed such transinfection has led to the death of all asymbiotic individuals (i.e., without *Wolbachia*; Le Clec’h et al., 2012). Resident *Wolbachia* (either native or non-native) might affect the host survival in case of such multiple infections (i.e., the resident *Wolbachia* strain and the invasive strain) in two main ways: (i) causing a decrease in wVulC induced mortality due to negative interference between the two *Wolbachia* strains, (ii) or causing an increase in wVulC induced mortality due to the additive costs that can result from multiple infections (López-Villavicencio et al., 2011). All the three ‘pathogens’ used in this study are considered to share a similar intracellular niche with the resident *Wolbachia* and thus can potentially compete with the resident symbiont for resources (Caragata et al., 2013; Sicard et al., 2014b). Such competition could in return decrease the success of the pathogens (Loker et al., 2004). *Wolbachia* could also interfere with pathogenic bacteria directly via the production of toxic compounds or in a more indirect way, by modulating the host physiology (Kaiser et al., 2010), particularly the host immune system (Kambris et al., 2009).

The present study aimed to test whether resident *Wolbachia* (either native or not) can modulate the survival of the terrestrial isopods when infected with the pathogenic intracellular bacteria *L. ivanovii* and *S. typhimurium* as well as after the transinfection with *Wolbachia* (wVulC). We showed in both *A. vulgare* and

P. dilatatus that the presence of a native *Wolbachia* can increase their ability to survive pathogenic bacterial infections. We thus reveal a ‘mutualistic side’ of *Wolbachia*–isopod interactions, which were considered until now as quite conflictual ones.

MATERIALS AND METHODS

Biological Material

Isopod Lines

We studied the impact of resident *Wolbachia* on their host survival when infected with intracellular pathogenic bacteria with lines of two terrestrial isopod host species. These two host species were chosen because each of them allowed to test the effect of different parameters: (i) the model *A. vulgare* allowed us to test the impact of the feminizing *Wolbachia* wVulC but also of their different host’s population of origin while (ii) the model *P. dilatatus* allowed us to test the effect of two CI-inducing *Wolbachia* genotypes (native versus non-native) on the same host genetic background. In *A. vulgare* lines, the impact of *Wolbachia* on the survival when injected with the pathogenic bacteria could not be tested in males as no males of this species were infected with *Wolbachia* due to the feminization process. However, for *P. dilatatus*, it was possible to test the effect of gender as they host CI-inducing strains, wDil and wCon, which infect both sexes (Sicard et al., 2014a).

In a previous study, Le Clec’h et al. (2013), had introduced by injection the native *Wolbachia* strain (wDil) isolated from a *P. dilatatus* symbiotic line (Sicard et al., 2014a), and a non-native CI *Wolbachia* strain (wCon) isolated from *Cylisticus convexus* (Moret et al., 2001) in recipient individuals from the asymbiotic *P. dilatatus* line (dilatatus A line; Table 1; Sicard et al., 2014a). Both *Wolbachia* are since then stably transmitted from injected mothers to further generations resulting in two independent lines maintained in the laboratory so called ‘dilatatus A-wCon’ and ‘dilatatus A-wDil’ (Table 1).

We used two *A. vulgare* asymbiotic lines (WXa from Helsingor and BF from Nice; Table 1) and two *A. vulgare* symbiotic lines infected with wVulC (ZN from Celles-Sur-Belles and WXw from

Helsingor; **Table 1**). We also created the BFwVulC line to have BF individuals infected with *Wolbachia* wVulC with the same genetic background as BF asymbiotic population. This line was generated by injection of *Wolbachia* from ZN females in BF recipient females following the procedure described in Le Cléc'h et al. (2013). Recipient females were then crossed with BF males to create this new line. Then, females and males from the BFwVulC line are crossed together at each generation to maintain the line. Animals from the BFwVulC line are infected with *Wolbachia* wVulC but have the 'genetic background' of BF asymbiotic line. The sex-ratio deviance due to *Wolbachia* infection in BFwVulC line was similar to the one observed in ZN line (data not shown). All the individuals from the different lines were grown at 20°C, in plastic breeding boxes, on humid soil and fed with dead lime-tree leaves. All animals used in this study were 1-year-old.

Pathogenic Intracellular Bacteria

Two phylogenetically distant intracellular pathogenic bacteria species, *L. ivanovii* (Phylum: Firmicutes) and *S. typhimurium* (Phylum: Proteobacteria), were injected into *A. vulgare* and *P. dilatatus* individuals from the different lines. *L. ivanovii* are Gram-positive intracellular bacteria, which are facultative anaerobe, non-spore forming rods (Vázquez-Boland et al., 2001). *L. ivanovii* has been shown to establish an intracellular infection causing moderate mortality in *D. melanogaster* (Rottschaefer and Lazzaro, 2012). The Gram-negative bacteria from the serotype *Salmonella enterica* serotype Typhimurium are facultative aerobic non-spore forming bacilli (Velge et al., 2012). *S. typhimurium* is considered as having a broad host range since they are able to infect the cells of many vertebrates (Velge et al., 2012) as well as invertebrates, such as *D. melanogaster* (Rottschaefer and Lazzaro, 2012). The strain used in this study expressed constitutively GFP.

Salmonella and Listeria Injections Bacterial Cultures

For *S. typhimurium* and *L. ivanovii* injections, bacteria from glycerol stocks were cultured overnight at 37°C in liquid LB medium (Luria Bertani Broth Base, Invitrogen) or in BHI medium (Brain-Heart Infusion, BD) respectively. These cultures were then used to grow bacterial colonies on LB plates or BHI plates at 37°C (LB or BHI with 15 g/L agar) until colonies reached a 5 mm diameter. Before each injection experiment, one colony of either *S. typhimurium* or *L. ivanovii* from solid cultures was added to 5 mL of LB or BHI liquid medium and incubated overnight at 37°C. One hundred microliter of the overnight culture was added to 5 mL of LB or BHI and incubated at 37°C to reach a 0.7 optical density (OD) at 600 nm. One milliliter of the 0.7 OD culture was then centrifuged (at 13000 g, 4°C, 2 min). The supernatant was disposed and the pellet was resuspended in 1 mL of fresh LB or BHI medium. The resulting suspension contained around 10⁵ bacteria/μL for *S. typhimurium* and 10⁶ bacteria/μL for *L. ivanovii*. The *S. typhimurium* suspension was then diluted by 10 in order to obtain a 10⁴ bacteria/μL suspension used for challenging both the *A. vulgare* and *P. dilatatus* individuals. Regarding the *L. ivanovii*, the initial 10⁶ bacteria/μL suspension was used to challenge the *A. vulgare* individuals. Due to the higher susceptibility of *P. dilatatus* to *L. ivanovii* (data not shown), the

L. ivanovii suspension was diluted by 10 to reach 10⁵ bacteria/μL to challenge *P. dilatatus*.

For each independent replicate (for both survival and pathogen multiplication experiments), all the bacterial cultures were prepared separately. Additionally, to check the actual number of injected bacteria, serial dilutions were made to obtain around 1 bacteria/μL, and 100 μL of this dilution was streaked on solid LB plates or BHI plates depending on the bacteria.

Survival Assays

A Hamilton syringe with fine glass needle was used to inject 1 μL of the bacterial suspension (*S. typhimurium* or *L. ivanovii*) or 1 μL of the control solution (LB or BHI sterile liquid medium respectively) into the general cavity. All batches comprised six individuals of each line (WXa, WXw, BF, BFwVulC, ZN, dilatatus A, dilatatus A-wCon, and dilatatus A-wDil) and were independently replicated five times ($n = 30$). For each replicate, three individuals from each line received the control treatment ($n = 15$ per line). After the injections of *L. ivanovii* or *S. typhimurium*, the animals from the same replicate were kept in a plastic box with moist paper and checked every 4 h to record the mortality during 144 h for *S. typhimurium* challenged individuals or 200 h for *L. ivanovii* challenged individuals (as the mortality appeared later for *L. ivanovii* injected isopods).

Pathogen Multiplication in Asymbiotic versus Symbiotic Animals

In order to compare the *L. ivanovii* and *S. typhimurium* loads between symbiotic (BFwVulC, dilatatus A-wDil) and asymbiotic (BF, dilatatus A) lines, animals were injected in three independent replicates with *S. typhimurium* (BFwVulC $n = 20$, BF $n = 20$; dilatatus A $n = 32$, dilatatus A-wDil = 24) or with *L. ivanovii* (BFwVulC $n = 30$; BF $n = 30$; dilatatus A $n = 15$; dilatatus A-wDil $n = 15$). Five microliters of hemolymph of each injected animals were sampled 24 h post-injection (PI). Sampled hemolymph from *S. typhimurium* infected isopods was diluted by 10⁶ in LB to reach a countable number of *S. typhimurium* colonies and 100 μL of these dilutions were streaked on two independent LB plates. All colonies grown on the plates were morphologically similar. However, to check whether the colonies on the plates were actually *S. typhimurium*, we spread them on a slide and checked under epifluorescence microscope (Olympus IX81) at $\lambda = 411$ nm for GFP expression. Sampled hemolymph from *L. ivanovii* infected isopods were added to 95 μL of BHI and directly streaked on BHI plates (no further dilution needed due to the low amount of *L. ivanovii* in hemolymph). The plates were then incubated overnight and the CFUs were counted the next day. To check whether the colonies showing the proper morphology all belonged to *L. ivanovii*, we sequenced randomly some of them on 16S rDNA.

Transinfection of P. dilatatus with wVulC from A. vulgare: Consequences on Survival and Mobility

Asymbiotic dilatatus A along with symbiotic dilatatus A-wCon and dilatatus A-wDil males (**Table 1**) were injected either with the wVulC suspension (obtained from crushed ovaries

of infected females) or with the control suspension (obtained from crushed ovaries of uninfected females). To do so, a Hamilton syringe with a fine glass needle was used to inject 2 μ L of filtered ovaries suspension from WXw or WXa females (Table 1) prepared as described in Le Cléc'h et al. (2013) into the general cavity of the animals, through a small hole pierced at the posterior part of the animal. For each treatment, three independent replicates were conducted ($n = 21$ received wVulC injection for dilatatus A, dilatatus A-wCon, and dilatatus A-wDil while $n = 27$ received the control treatment).

After injection of wVulC into dilatatus A, dilatatus A-wCon, and dilatatus A-wDil individuals, injected animals from each replicate were kept at 20°C in a plastic rearing box on humid soil and fed with dried lime-tree leaves soil. The survival was recorded every 15 days starting at day 1 until day 112. In addition, a mobility test was performed on the survivors every 15 days, starting from day 60 until the day 105, by measuring the time the animals move in a Petri dish during a period of 180 s (Le Cléc'h et al., 2012).

Detection and Density of Wolbachia

We quantified the density of *Wolbachia* by qPCR, both in the suspensions injected to *P. dilatatus* (i.e., when wVulC is injected as the invasive pathogen) and in the animals that received pathogenic bacterial injections (i.e., quantification of the resident *Wolbachia*: wCon, wDil in *P. dilatatus* and wVulC in *A. vulgare*) using either ovary or leg samples. The latter can be sampled without killing the animals allowing us to use the same animal both to measure the quantity of *Wolbachia* and to inject pathogens. Total DNA was extracted using the protocol described by Kocher et al. (1989) and the Nanodrop 1000 spectrophotometer was used to estimate the total DNA concentration and quality (ratios OD 260/280 nm). Reactions of qPCR were performed, as previously described in Le Cléc'h et al. (2012), using Roche LightCycler 480 to measure the copy number of the *Wolbachia* surface protein (*wsp*) gene. In short, each 10 μ L reaction contained 5 μ L of SYBRGreen Master Mix (Roche), 0.5 μ L of 10 μ M specific primers *wsp208f* (5'-TGG-TGC-AGC-ATT-TAC-TCCAG-3') and *wsp413r* (5'-TCG-CCTT-GATAAG-CAA-AAC-CA-3'), 3 μ L of sterile water and 1 μ L of DNA (corresponding to a range of 5–50 ng). The thermal cycle starts with a 10 min initial denaturation at 95°C followed by 45 cycles of 10 s of denaturation at 95°C, 10 s of annealing at 60°C and 20 s of elongation at 72°C. The specificity of the PCR product was verified with a melting curve (65–97°C) that was recorded at the end of the each reaction. The *wsp* copy number was estimated with the help of the standard curve plotted using a dilution of the *wsp* purified PCR product (2.63×10^3 *wsp*.copies μ L⁻¹). The *wsp* copy number was then divided by the total DNA amount of the sample in ng in order to obtain normalized values for comparison between samples. For each sample two independent technical replicates were made.

Statistical Analyses

R 3.2.2 was used for all of the statistical analysis.

Wolbachia Titer

Shapiro-Wilk and Levene's tests were conducted to check normality and homoscedasticity of the number of *wsp* copy/ng of total DNA. A *t*-test with Bonferroni correction for multiple testing was used when the data followed a normal distribution and variances of the samples were homogenous. A Wilcoxon-rank test was performed when the data was not normally distributed.

Isopod Survival After *L. ivanovii* and *S. typhimurium* Injections

A global mixed effects Cox proportional hazards model was fitted using the "coxme" R package. Bacterial injection (i.e., control/*Salmonella* or *Listeria*), *Wolbachia* status (presence/absence for *A. vulgare*; presence of different *Wolbachia* strains/absence of *Wolbachia* for *P. dilatatus*) as well as gender (for *P. dilatatus*) and population of origin (for *A. vulgare*) were included in the models as fixed effects. As the experiments were performed on different independent groups of individuals, a block effect was included as a random effect in the models. The latter analysis showed a low variance between independent groups (i.e., blocks) indicating the repeatability of the experiments. Each model was also fitted without control groups. This allowed us to compare the survival of the different asymbiotic and symbiotic lines when infected with the pathogenic bacteria. Survival of the different lines was compared pairwise to assess the difference between their survival times using the log-rank test.

Consequences of wVulC Transinfection on *P. dilatatus* Life History Traits

Models were fitted for the days 60, 75, and 105 PI in order to test differences in survival during the course of the infection of *P. dilatatus* by wVulC. Survival was modeled using a mixed effects Cox proportional hazards model as described above. For the analysis of the mobility, the 'nlme' package (version 3.1-120) was used to fit a mixed effect linear model with a random block effect. In both analyses, first a global model including all of the three lines (i.e., dilatatus A, dilatatus A wCon, and dilatatus A wDil) was performed. Then, further analysis was made to clarify the effect of the presence of each of the *Wolbachia* strains (i.e., wDil, wCon) on mobility and survival, when the host was infected with wVulC. Additionally, the log-rank test was used to compare the survival times of each lineage pairwise.

RESULTS

Wolbachia Density in Symbiotic *A. vulgare* and *P. dilatatus*

Females of symbiotic *A. vulgare* lines were found infected with *Wolbachia* as expected (using leg samples; Figure 1A). The *Wolbachia* density did not differ significantly between the lines that are naturally (ZN, WXw) or experimentally (BFwVulC) infected with wVulC (*t*-test with Bonferroni correction; ZN and BFwVulC: $t = 0.133$, $df = 17$, $p = 1.00$; WXw and BFwVulC:

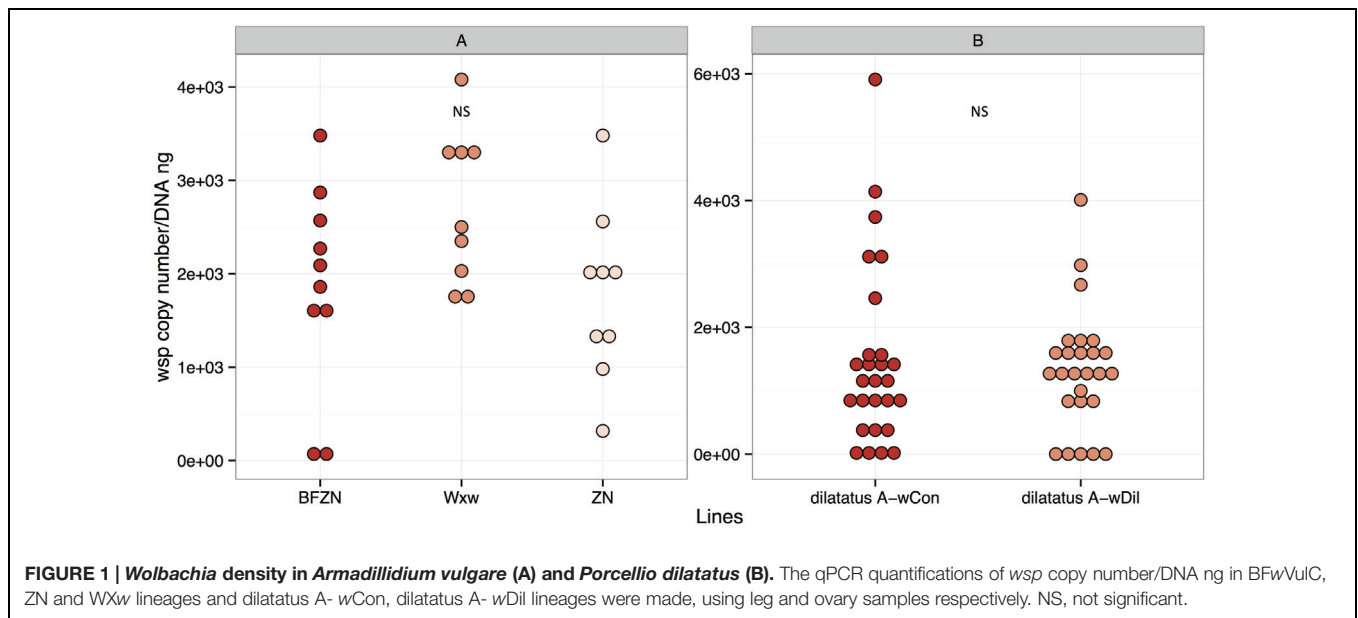


TABLE 2 | Survival analyses of the different *A. vulgare* and *P. dilatatus* lines when injected with *S. typhimurium* or *L. ivanovii*.

	<i>S. typhimurium</i> injections			<i>L. ivanovii</i> injections		
	df	Deviance	<i>p</i>	df	Deviance	<i>p</i>
<i>P. dilatatus</i>						
With control						
Bacterial injection	1	77.193	<0.001	1	35.156	<0.001
<i>Wolbachia</i> status	2	22.244	<0.001	2	0.877	0.645
Gender	1	6.191	<0.001	1	7.863	0.005
Without control						
<i>Wolbachia</i> status	2	22.244	<0.001	2	0.739	0.691
Gender	1	6.191	0.013	1	10.396	0.001
<i>A. vulgare</i>						
With control						
Bacterial injection	1	20.141	<0.001	1	6.322	0.012
<i>Wolbachia</i> status	1	5.737	0.017	1	24.630	<0.001
Population of origin	2	6.860	0.032	2	10.606	0.005
Without control						
<i>Wolbachia</i> status	1	7.943	0.001	1	15.302	<0.001
Population of origin	2	7.568	0.023	2	31.630	<0.001

Isopods were injected either with *S. typhimurium* or *L. ivanovii* and their survival was recorded. A mixed effect Cox proportional hazards model was fitted with and without the controls using the survival data of the lineages to estimate the effects of the treatment, the presence of *Wolbachia*, the different *Wolbachia* strains, the gender (only in *P. dilatatus*), the population of origin (only in *A. vulgare*) on the survival and the replicate blocks as a random effect. In bold, statistically significant values ($p < 0.05$).

$t = 1.903$, $df = 17$, $p = 0.19$; ZN and WXw: $t = 2.228$, $df = 16$, $p = 0.16$; **Figure 1A**).

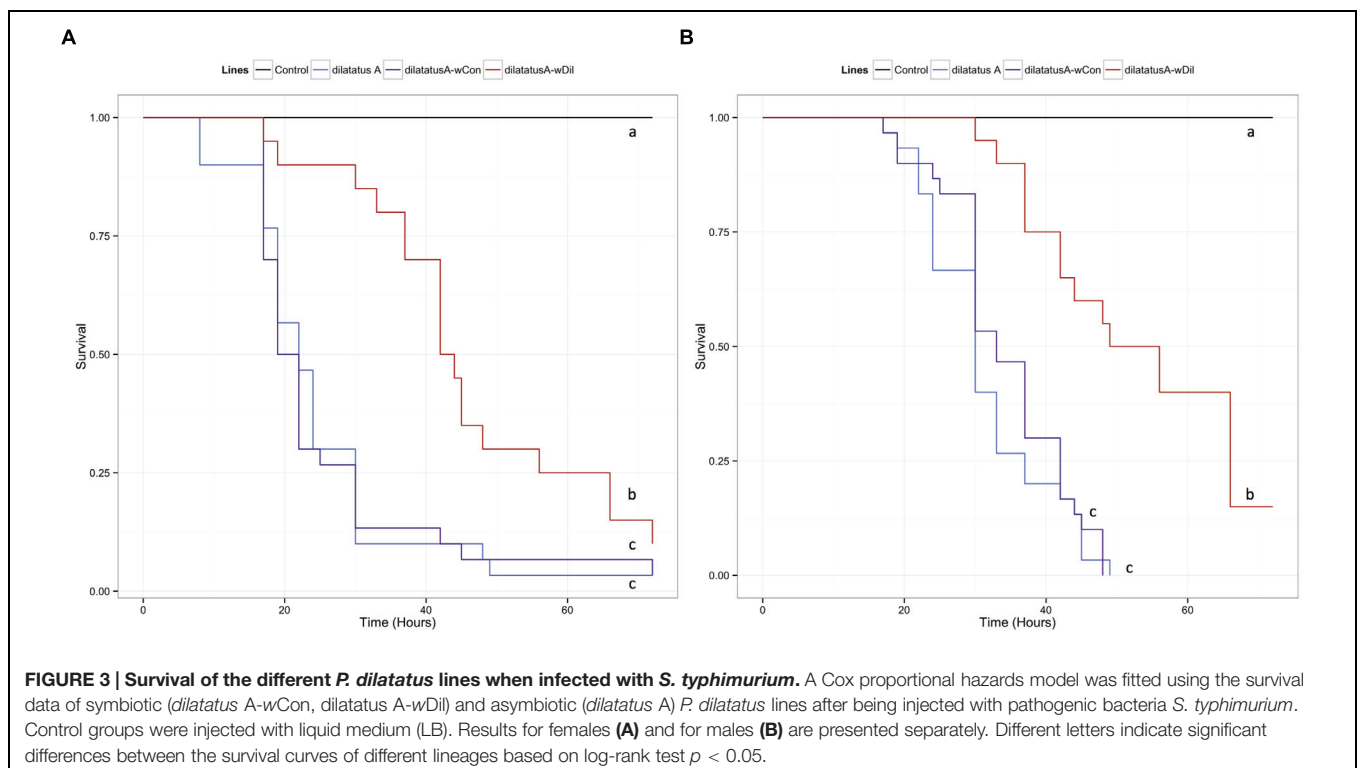
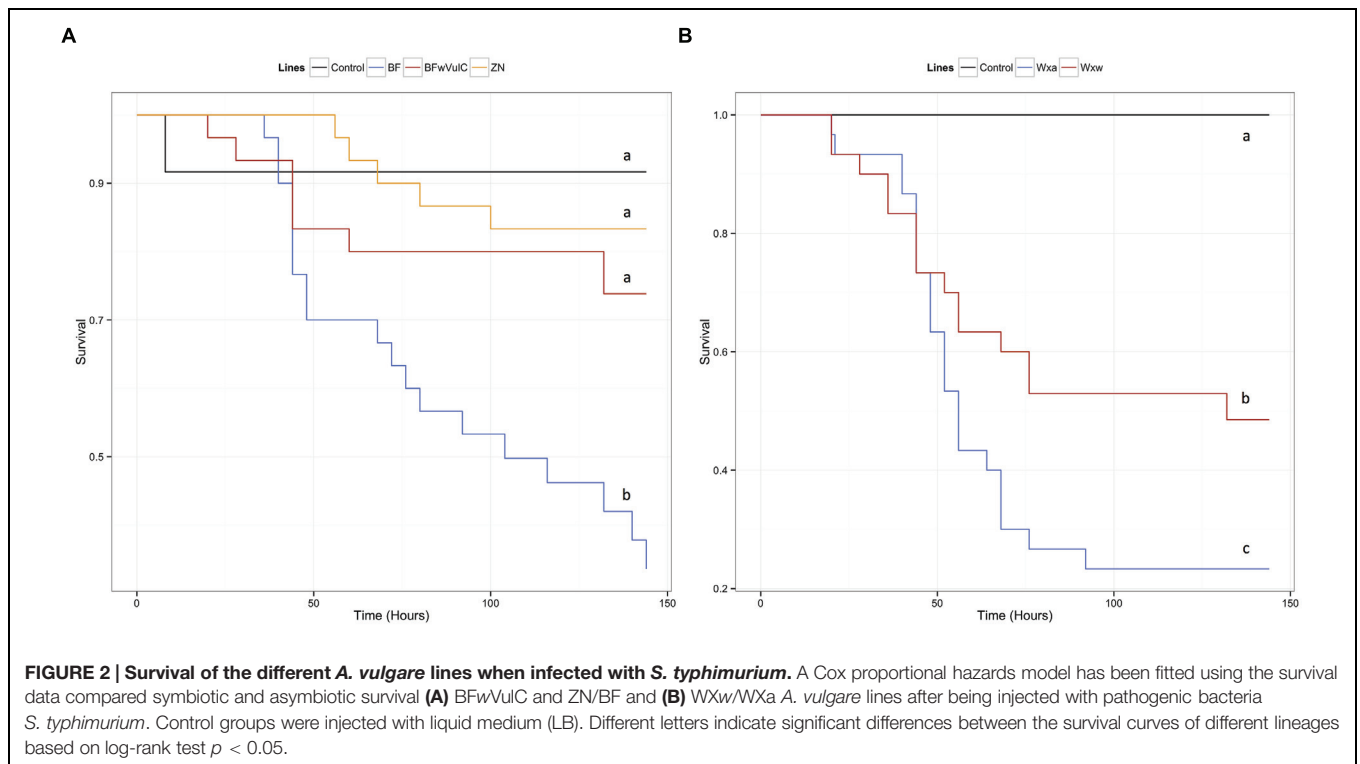
The symbiotic *P. dilatatus* individuals from the lines dilatatus A-wCon and dilatatus A-wDil were also proved to be all infected with *Wolbachia* using ovary samples (**Figure 1B**). The density of *Wolbachia* in both lines was similar as already reported in Pigeault et al. (2014) (Wilcoxon-rank sum test, $W = 361$, $p = 0.866$).

The number of *wsp* copies in the wVuIC bacterial suspensions injected for transinfection of *P. dilatatus* was around of 1×10^6 *wsp* copy/ μ L.

The Impact of *Wolbachia* on the Survival of Terrestrial Isopods Infected with *L. ivanovii* and *S. typhimurium*

Global Survival Analysis

For both isopod species, the global survival models including all treatment groups (controls without injection of pathogens included), showed that *L. ivanovii* and *S. typhimurium* injections always significantly reduced the survival of terrestrial isopods (**Table 2**): both *L. ivanovii* and *S. typhimurium* were pathogenic for both isopod host species. The presence or absence of



pathogenic bacteria in the injection explained an important part of the deviance between treatments. However, this was not the only significant explanatory factor. In the global model indeed, the symbiotic status (i.e., individual infected or not with

Wolbachia) of the host also explained an important part of the deviance, with the exception of *P. dilatatus* individuals injected with *L. ivanovii* for which *Wolbachia* presence did not influence the survival (Table 2).

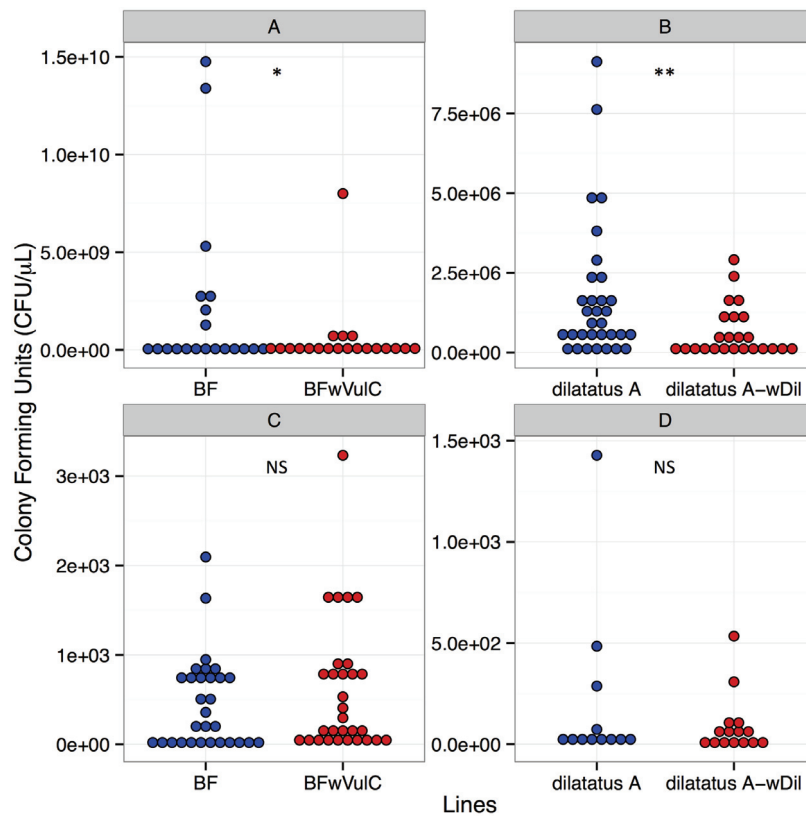


FIGURE 4 | *Salmonella typhimurium* (A,B) and *Listeria ivanovii* (C,D) CFUs in *A. vulgare* and *P. dilatatus*. CFUs of *S. typhimurium* from *A. vulgare* hemolymph (A), from *P. dilatatus* hemolymph (B), CFUs of *L. ivanovii* from *A. vulgare* hemolymph (C) and CFUs of *L. ivanovii* from *P. dilatatus* hemolymph (D). * $p < 0.05$, ** $p < 0.01$. NS, not significant.

Other explanatory factors were specific to each of the isopod species. In *A. vulgare*, the effect of the population of origin showed that this factor also significantly explained a part of the deviance (Table 2; Figures 2 and 5). In *P. dilatatus*, the global model showed that the survival depended significantly on the gender when injected with *L. ivanovii* or *S. typhimurium*: females survived better than males (Table 2; Figures 3 and 6).

Impact of *Wolbachia* on *S. typhimurium* Infections

Survival

A reduced submodel was fitted after excluding the control groups (i.e., injection of sterile culture media) to evaluate which parameter (gender, population of origin, *Wolbachia* status) still explained significantly the deviance in the survival of animals infected with *S. typhimurium*.

In *A. vulgare*, the presence of *Wolbachia* explained an important part of deviance in survival: symbiotic lines survived the *S. typhimurium* infection better than asymbiotic ones (Table 2). Originating from the same line and only differing in their symbiotic condition, BFwVulC individuals survived better than BF ones (log-rank test: $\chi^2 = 7.2$, $df = 1$, $p = 0.007$, Figure 2A). On the other hand, BFwVulC showed a very similar survival pattern to the other symbiotic lineage ZN (log-rank test:

$\chi^2 = 0.7$, $df = 1$, $p = 0.405$, Figure 2A), even though they did not come from the same line but have the same *Wolbachia* strain. Similarly, the symbiotic lineage WXw survived better than the asymbiotic WXa originated from the same initial population (log-rank test: $\chi^2 = 3.8$, $df = 1$, $p = 0.049$, Figure 2B).

In *P. dilatatus*, the reduced submodel showed that both the *Wolbachia* status and at a lower extent the gender, explained significantly a part of the deviance (Table 2). The survival of *P. dilatatus* when injected with *S. typhimurium* differed not only between symbiotic and asymbiotic animals, but also depending on the resident *Wolbachia* strain present (i.e., native wDil and non-native wCon). Pairwise comparison of survival data with log-rank test showed that dilatatus A-wDil animals infected with native *Wolbachia* survived better than both dilatatus A-wCon and asymbiotic dilatatus A ones. This pattern was observed for females and males (for females, dilatatus A and dilatatus A-wDil: log-rank test, $\chi^2 = 9.4$, $df = 1$, $p = 0.002$; dilatatus A-wCon and dilatatus A-wDil: log-rank test, $\chi^2 = 7.7$, $df = 1$, $p = 0.006$, Figure 3A; for males, dilatatus A and dilatatus A-wDil: log-rank test, $\chi^2 = 25.3$, $df = 1$, $p < 0.001$, dilatatus A-wCon and dilatatus A-wDil: log-rank test, $\chi^2 = 22.1$, $df = 1$, $p < 0.001$, Figure 3B). However, the survival of asymbiotic dilatatus A and symbiotic dilatatus A-wCon was not significantly different (females: dilatatus A and dilatatus A-wCon: log-rank

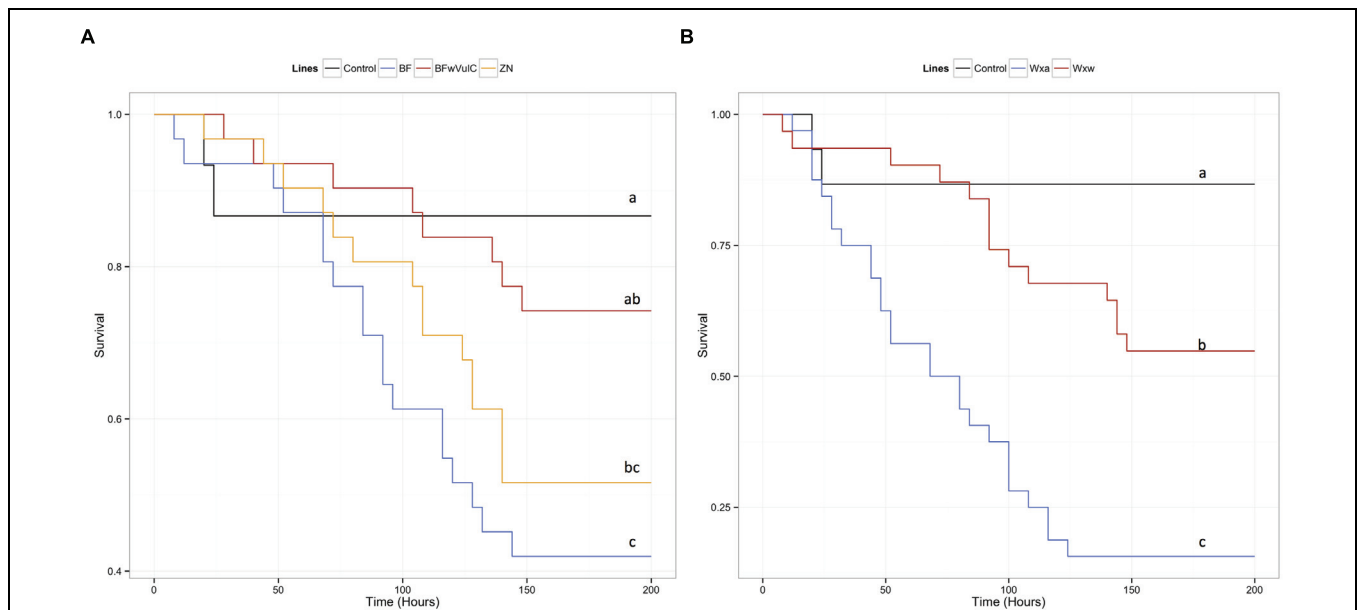


FIGURE 5 | Survival of the different *A. vulgare* lines when infected with *L. ivanovii*. A Cox proportional hazards model has been fitted using the survival data compared symbiotic and asymptomatic survival (A) BFwVulC and ZN/BF and (B) Wxw/Wxa. *A. vulgare* lines after being injected with pathogenic bacteria *L. ivanovii*. Control groups were injected with liquid medium (BHI). Different letters indicate significant differences between the survival curves of different lineages based on log-rank test $p < 0.05$.

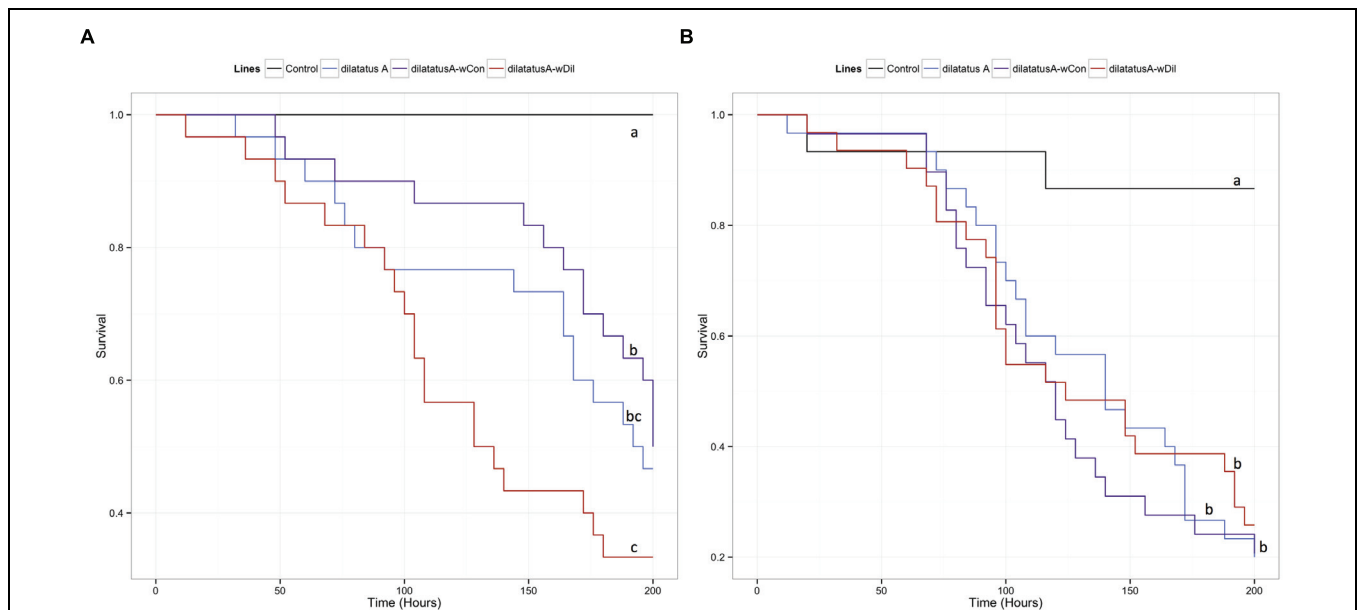
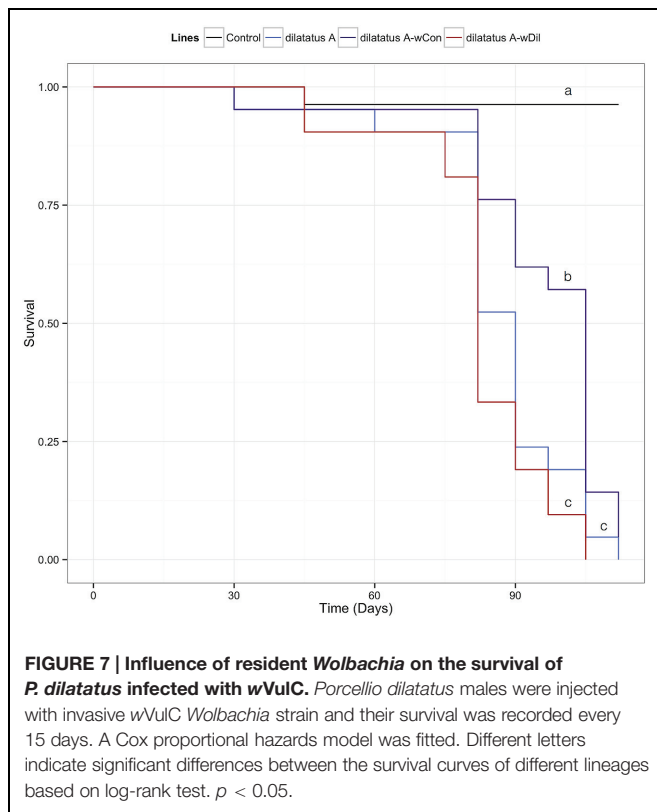


FIGURE 6 | Survival of the different *P. dilatatus* lines when infected with *L. ivanovii*. A Cox proportional hazards model was fitted using the survival data of symbiotic (*dilatatus A-wCon*, *dilatatus A-wDil*) and asymptomatic (*dilatatus A*) individuals after being injected with pathogenic bacteria *L. ivanovii*. Results for females (A) and for males (B) are presented separately. Control groups were injected with liquid medium (BHI). Different letters indicate significant differences between the survival curves of different lineages based on log-rank test. $p < 0.05$.

test, $\chi^2 = 0.2$, $df = 1$, $p = 0.683$, **Figure 3A**; males: *dilatatus A* and *dilatatus A-wCon*: log-rank test, $\chi^2 = 0.6$, $df = 1$, $p = 0.435$, **Figure 3B**). These results showed that only *P. dilatatus* individuals harboring the native *Wolbachia* strain *wDil* survived better than the other lines when infected with *S. typhimurium*.

Pathogen Load

Twenty-four hours PI, hemolymph samples were taken from animals injected with *S. typhimurium* to compare the pathogen load (i.e., CFUs) between asymptomatic (BF, *dilatatus A*) and symbiotic (BFwVulC, *dilatatus A-wCon*, *dilatatus A-wDil*)



animals. In both *A. vulgare* and *P. dilatatus*, the pathogen load in the hemolymph was higher than the amount that was initially injected (at least 400 times higher). Moreover, in both *A. vulgare* and *P. dilatatus*, CFUs from *S. typhimurium* was significantly higher in asymbiotic animals compared to the symbiotic ones (BF/BFwVulC: $W = 274$, $p = 0.043$, **Figure 4A**; dilatatus A/dilatatus A-wDil $W = 631.5$, $p = 0.006$, **Figure 4B**).

Impact of *Wolbachia* on *L. ivanovii* Infections

Survival

In *A. vulgare*, similar to the global model, the reduced submodel showed that both the *Wolbachia* status and the origin of the population explained significantly a part of the deviance (**Table 2**). Pairwise comparison of survival data showed that symbiotic BFwVulC females survived significantly better than asymbiotic BF ones (log-rank test, $\chi^2 = 4.7$, $df = 1$, $p = 0.029$, **Figure 5A**) while survival of BFwVulC and ZN did not differ from each other (log-rank test, $\chi^2 = 3.2$, $df = 1$, $p = 0.075$, **Figure 5A**). In addition, symbiotic WXw females survived significantly better than asymbiotic WXa when injected with *L. ivanovii* (log-rank test, $\chi^2 = 16.7$, $df = 1$, $p < 0.001$, **Figure 5B**).

In *P. dilatatus*, a significant part of the deviance in survival was explained in the reduced submodel by the factor 'gender': females surviving better than males (**Table 2**). In this case, the *Wolbachia* status did not significantly affect the survival in the model ($p = 0.691$; **Table 2**). However, pairwise comparison of survival data showed a weak effect of *Wolbachia* status; there was actually

no significant difference between the survival of asymbiotic and symbiotic females infected with *L. ivanovii* (dilatatus A and dilatatus A-wCon: log-rank test, $\chi^2 = 0.3$, $df = 1$, $p = 0.579$; dilatatus A and dilatatus A-wDil: log-rank test, $\chi^2 = 1.8$, $df = 1$, $p = 0.180$; **Figure 6A**). However, there was a significant difference in survival between females infected with different *Wolbachia*: dilatatus A-wCon females survived better than dilatatus A-wDil ones (log-rank test, $\chi^2 = 4$, $df = 1$, $p = 0.046$; **Figure 6B**). This pattern was not confirmed in males for which no difference due to the presence of any of the *Wolbachia* strains was detected (log-rank test: $\chi^2 = 0.4$, $df = 2$, $p = 0.813$; **Figure 6B**).

Pathogen Load

Twenty-four hours PI, hemolymph was sampled from *L. ivanovii* injected animals to compare the pathogen loads between asymbiotic (BF, dilatatus A) and symbiotic (BFwVulC, dilatatus A-wCon, dilatatus A-wDil) animals. The mean of the pathogen load in the hemolymph was more than 60 times lower than the initially injected *L. ivanovii* amount. No significant difference between asymbiotic and symbiotic animals was detected in any of the isopod models (for *A. vulgare*: $W = 425.5$, $p = 0.723$, **Figure 4C**; for *P. dilatatus*: $W = 90$, $p = 1$, **Figure 4D**).

Influence of Resident *Wolbachia* on Invasive *Wolbachia*

Survival

The negative effect of the *wVulC* infection on the survival of the animals was detected from day 90 PI (**Figure 7**; **Table 3**). Pairwise comparisons of survival data with log-rank test showed that the differential effect of the *Wolbachia* status (asymbiotic, dilatatus A-wDil, or dilatatus A-wCon) became apparent at day 105 PI (**Table 3**): globally, dilatatus A-wCon survived significantly longer than dilatatus A individuals and dilatatus A-wDil ones (log-rank test, dilatatus A-wDil and dilatatus A-wCon: $\chi^2 = 12.2$, $df = 1$, $p < 0.001$; dilatatus A and dilatatus A-wCon: $\chi^2 = 5.8$, $df = 1$, $p = 0.015$; **Figure 7**).

Mobility

Leg tremors and seizures caused by the *wVulC* infection were observed during the course of experiment for all lines. The mobility of the animals injected with *wVulC* decreased compared to the control group, starting from the day 60 PI (**Table 3**). This decrease continued until the last days of the infection monitoring in all lines. However, the decrease of mobility due to *wVulC* was lower for symbiotic dilatatus A-wCon individuals compared to the other symbiotic lineage dilatatus A-wDil at both days 75 and 105 PI (**Table 3**; **Figure 8**).

DISCUSSION

The potential mutualistic nature of *Wolbachia* as a protective symbiont was revealed few years ago by the interactions between *Wolbachia* and RNA viruses in *Drosophila* (Hedges et al., 2008; Teixeira et al., 2008). Since then, the protection conferred by the presence of *Wolbachia* has been reported against various natural enemies. However, this has mainly been observed in artificially

TABLE 3 | Influence of resident *Wolbachia* on the survival and mobility of *P. dilatatus* infected with wVulC.

	Day 60 PI			Day 75 PI			Day 105 PI		
	df	Deviance	<i>p</i>	df	Deviance	<i>p</i>	df	Deviance	<i>p</i>
Comparisons between <i>dilatatus</i> A, <i>dilatatus</i> A-wCon, and <i>dilatatus</i> A-wDil									
Mobility									
Bacterial injection	1	15.245	<0.001	1	26.701	<0.001	1	18.135	<0.001
<i>Wolbachia</i> status	2	3.535	0.171	2	6.635	0.036	2	6.080	0.048
Survival									
Bacterial injection	1	0.604	0.436	1	1.285	0.257	1	42.591	<0.001
<i>Wolbachia</i> status	2	0.993	0.608	2	1.576	0.448	2	9.218	0.01
Comparisons between <i>dilatatus</i> A-wCon and <i>dilatatus</i> A-wDil									
Mobility									
Bacterial injection	1	11.681	0.001	1	20.181	<0.001	1	18.138	<0.001
<i>Wolbachia</i> status	1	1.612	0.204	1	5.724	0.017	1	6.080	0.014
Survival									
Bacterial injection	1	0.214	0.643	1	3.413	0.064	1	32.185	<0.001
<i>Wolbachia</i> status	1	2.078	0.149	1	0.149	0.245	1	8.475	0.004

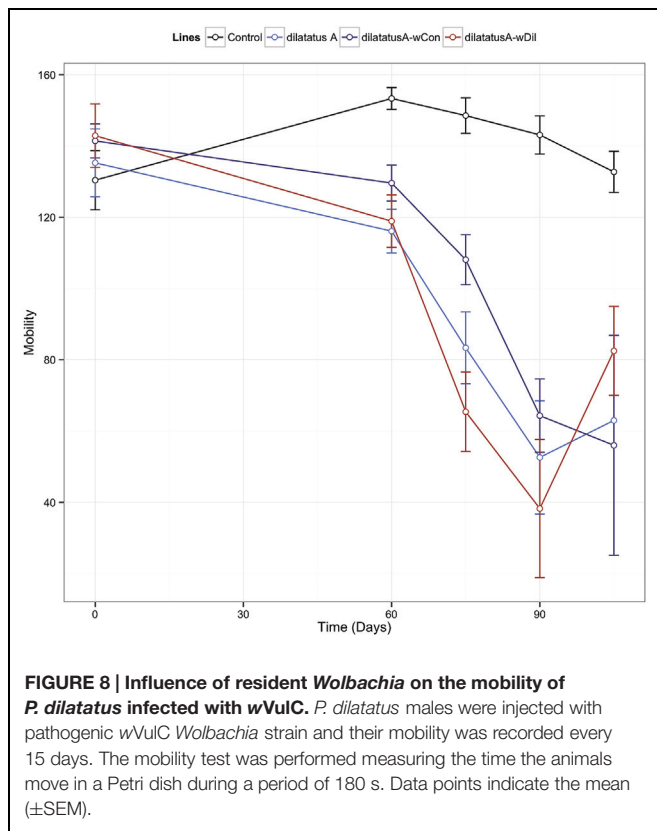
Porcellio dilatatus males were injected with invasive wVulC *Wolbachia* strain and their survival as well as their mobility was recorded on the days 60, 75, and 105 PI. A mixed effects linear model with random block effect was used to analyze mobility data. A mixed effects Cox proportional hazards model was fitted using the survival data of the lineages to estimate the effects of the treatment and the *Wolbachia* status. For both models, first a global model with all of the lineages (symbiotic *dilatatus* A-wCon, *dilatatus* A-wDil and asymbiotic *dilatatus* A) was fitted, then further analysis was made to clarify the differences between symbiotic *dilatatus* A-wCon and *dilatatus* A-wDil lineages with help of a sub-model. In bold, statistically significant values ($p < 0.05$).

established host-*Wolbachia* associations either when a naturally naive host was transfected with *Wolbachia* (Kambris et al., 2009; Ye et al., 2013), or when a non-naive host (i.e., host species for which some individuals are infected by another *Wolbachia* strain) was transfected with a new *Wolbachia* strain (Blagrove et al., 2012). The aim of our study was to find out whether a resident *Wolbachia* has a protective effect against intracellular bacterial pathogens in terrestrial isopods.

In *A. vulgare*, we showed that lines harboring the feminizing *Wolbachia* wVulC (BFwVulC, ZN, WXw) survived both *L. ivanovii* and *S. typhimurium* injections better than their asymbiotic counterparts (BF, WXa). This demonstrates that wVulC behaves as a protective symbiont for *A. vulgare*. Moreover, even if our analyses of the different lines coming from different populations of origins showed an influence of 'host-background' in the protection phenotype, the major source of variation in survival to pathogenic bacteria is clearly the absence or presence of *Wolbachia* wVulC. A prevailing effect of *Wolbachia* on *A. vulgare* physiology was already demonstrated by studying several immune parameters (Braquart-Varnier et al., 2008; Sicard et al., 2010). In 1-year-old *A. vulgare*, the same age as the animals used in the present study, the presence of wVulC influences both PO activities (Sicard et al., 2010) and hemocyte type proportions (i.e., increase in hyaline and semi-granular hemocyte, and decrease in granular hemocyte percentage; Chevalier et al., 2011). Besides native wVulC *Wolbachia* presence leads to a down regulation of some immune genes in the whole body of *A. vulgare*, including genes involved in stress response, detoxification, autophagy, AMP synthesis (including two Gram-positive AMPs: armadillidin and crustin), pathogen recognition and proteolytic cascades in ovaries (Chevalier et al., 2012), while most of these genes tend,

on the contrary, to be up-regulated in the immune tissues of *Wolbachia* infected animals (Chevalier et al., 2012). The previously described immunodepressive effects of *Wolbachia* presence might be somehow compensated by the general up-regulation of immune genes specifically in the immune tissues hence causing the observed protective effect. However, the global picture of *Wolbachia* influence on *A. vulgare* immune system is not yet unraveled and the protection against bacterial pathogens demonstrated here cannot be linked to any previously demonstrated effect of *Wolbachia* presence. Besides any immune system stimulation, such protection effect of the presence of *Wolbachia* could also be the result of negative interferences between resident symbiont and invasive bacteria in diverse possible ways.

In *P. dilatatus*, the two CI-inducing *Wolbachia* strains (non-native wCon and native wDil) both conferred protection of both females and males against pathogenic bacteria. However, each resident *Wolbachia* increased survival against different invasive pathogenic bacteria: the native wDil conferred better resistance to *S. typhimurium* infection while wCon conferred a slightly higher resistance against *L. ivanovii*. Previous assessments of the influence of both *Wolbachia* strains on some *P. dilatatus* immune parameters (PO, hemocyte load and phagocytosis rate) indicated that the two *Wolbachia* strains influence the immune system differently: the non-native wCon is overall more immunostimulating than the native wDil (Pigeault et al., 2014). wCon as a non-native *Wolbachia* strain of *P. dilatatus* might trigger more general immune pathways than the native wDil strain does, suggesting an immune stimulation due to the presence of the foreign *Wolbachia*. However, an alternative hypothesis not implying mediation via immunity may also explain such patterns of protection: wDil could interact harder with *Salmonella* and



counteracts its multiplication while *wCon* would interact harder with *Listeria*. For *P. dilatatus*, we also demonstrate an effect of gender on survival: females survived better than males when challenged with pathogenic bacteria. This suggests that isopod females invest more in immunity than males, as already reported by measuring immune parameters in Pigeault et al. (2014).

Previous transinfection experiments with *P. dilatatus* as a recipient host demonstrated that *wVulC* coming from *A. vulgare* resulted in strong pathogenicity when interacting with this new host (Le Clec'h et al., 2012, 2013, 2014). In the present work, the *wVulC* strain was injected into asymbiotic (*dilatatus A*) but also for the first time in symbiotic animals (i.e., *dilatatus A-wCon* or *dilatatus A-wDil*). Our results confirmed the pathogenicity of *wVulC* on *P. dilatatus* and we observed the previously reported symptoms (reduced mobility, leg tremors, seizures) suggesting a neurologic pathology (Le Clec'h et al., 2012, 2013). Nonetheless, *dilatatus A-wCon* survived longer and some symptoms such as reduced mobility were postponed compared to the other lines. The difference in survival rates following *wVulC* injections was not related to the load of resident *Wolbachia*. Therefore the reason for this difference could result from difference in the interactions between *wVulC* and the resident strain within the intracellular niche.

Our results demonstrate for the first time in any model a protection conferred by native *Wolbachia* strains against pathogenic intracellular bacteria: an important proportion (up to 70%) of the symbiotic animals survived the infection (even several weeks after infection; personal observation) while all

the asymbiotic animals died. Such a strong benefit due to the presence of *Wolbachia* has only been previously reported for infection of extracellular *E. carotovora* in the naive host *A. aegypti* transinfected with non-native *Wolbachia* strains from *Drosophila* (Kambris et al., 2009; Ye et al., 2013). Other investigations on bacterial protection conferred by *Wolbachia* conducted on *D. melanogaster* naturally infected with native *Wolbachia* showed that symbiotic animals did not survive better than their asymbiotic counterparts when infected with pathogenic bacteria such as *L. ivanovii* and *S. typhimurium* as well as *Burkholderia cepacia*, *E. carotovora*, and *Mycobacterium marinum* (Rottschaefer and Lazzaro, 2012; Ye et al., 2013). Similarly, *Drosophila simulans* naturally infected with *Wolbachia* did not show any difference in terms of mortality compared to the flies without *Wolbachia*, when infected with *E. carotovora*, *Pseudomonas aeruginosa*, and *Serratia marcescens* (Wong et al., 2011). Based on these studies, it was suggested that the mechanism responsible for the protective effect against pathogenic bacteria, only observed in artificial associations between *Wolbachia* and mosquitoes, could result from an immune stimulation triggered only by non-native transinfected *Wolbachia* (Moreira et al., 2009; Bian et al., 2010; Ye et al., 2013). As such immune priming would be unlikely to be triggered in long-term associations between *Wolbachia* and their arthropod hosts, several authors concluded that a protective effect of *Wolbachia* against intracellular bacteria in natural symbiotic systems was not likely to be found (Rottschaefer and Lazzaro, 2012; Ye et al., 2013). However, in isopod models, we showed a protection against pathogenic bacteria in situations for which immune stimulation caused by the introduction of non-native *Wolbachia* in a new host cannot explain the protection phenotype. Even though in the BFWVulC and *dilatatus-wDil* lines, the *Wolbachia* have been artificially introduced, the *Wolbachia* strain *wVulC* is widely distributed all over the world in *A. vulgare* populations (Cordaux et al., 2004) while *wDil* is widely distributed in *P. dilatatus* (Grève, personal communication). Therefore, there are co-evolutionary histories between these symbiotic partners.

By measuring the concentration of pathogenic bacteria in the hemolymph of the injected animals, we investigated whether the observed protection would be due to a true resistance phenomenon which would result in reduced pathogen load, or tolerance which would result in a similar pathogen load but increased survival (Schneider and Ayres, 2008). In *S. typhimurium* infection, symbiotic BFWVulC (*A. vulgare*) and *dilatatus A-wDil* (*P. dilatatus*) lines showed lower pathogen load in their hemolymph than asymbiotic BF (*A. vulgare*) and *dilatatus A* (*P. dilatatus*) lines respectively. Therefore, the better survival of symbiotic animals would correspond to a decrease in bacterial load in the hemolymph (i.e., higher resistance). On the other hand, we did not find any difference in *L. ivanovii* load in the hemolymph of the isopods 24 h PI (Figure 4) or even 48 h PI (personal observation). These results suggest that the difference in survival between lines after *Listeria* injection was not linked to difference in pathogenic bacterial loads. However, further investigations would be required to have a firm conclusion on the latter, since in our experiments *Listeria* was clearly

pathogenic while we were not able to detect a proper infection (i.e., multiplication) in the hemolymph.

Maternally inherited *Wolbachia* strains induce either feminization or CI in terrestrial isopods. As these reproductive manipulations and in general *Wolbachia* infections can have severe costs on host fitness, they are considered as conflictual interactions. Indeed various *Wolbachia* strains are linked to some detrimental effects on their host's fitness, such as wVulC strain in *A. vulgare* causing reduced progeny and survival (Braquart-Varnier et al., 2008; Sicard et al., 2010). Given that *Wolbachia* are quite widespread in host populations despite their apparent fitness costs, we hypothesize that the observed protection effect could compensate for the costs, and that *Wolbachia* can become a mutualist, especially if infections by environmental bacteria constitute an important threat for terrestrial isopods. Moreover in *P. dilatatus*, the native wDil strain has recently been shown to increase the reproduction of its host (Pigeault et al., 2014). If antibacterial protection conferred by the same *Wolbachia* is paired with a reproductive benefit (Pigeault et al., 2014), reproductive parasitism might continue to manipulate host reproduction while being a mutualist at the same time, resulting in a so called 'Jekyll and Hyde' infection, where beneficial and

conflictual traits co-exist together in the same symbiotic system (Zug and Hammerstein, 2014).

FUNDING

This work was supported by the Ministère de l'Enseignement Supérieur et de la Recherche and the Agence Nationale de la Recherche (ADaWOL ANR-09-JCJC-0109-01 coordinated by MS and ImmunSymbArt ANR-10-BLAN-1701 coordinated by DB). MA was financially supported by the European Commission through the program Erasmus Mundus Master Course – International Master in Applied Ecology (EMMC-IMAE; FPA 532524-1-FR-2012-ERA MUNDUS-EMMC).

ACKNOWLEDGMENTS

We thank Dr. Winka Le Clec'h for her valuable comments on the project. We thank Julien Dauphin, Carine Delaunay, Gaetan Mappa, and Maryline Raimond for their technical assistance. We also thank all the technical staff of the UMR EBI CNRS 7267.

REFERENCES

- Bian, G., Xu, Y., Lu, P., Xie, Y., and Xi, Z. (2010). The endosymbiotic bacterium *Wolbachia* induces resistance to dengue virus in *Aedes aegypti*. *PLoS Pathog.* 6:e1000833. doi: 10.1371/journal.ppat.1000833
- Blagrove, M. S. C., Arias-Goeta, C., Failloux, A.-B., and Sinkins, S. P. (2012). *Wolbachia* strain wMel induces cytoplasmic incompatibility and blocks dengue transmission in *Aedes albopictus*. *Proc. Natl. Acad. Sci. U.S.A.* 109, 255–260. doi: 10.1073/pnas.1112021108
- Bouchon, D., Cordaux, R., and Grève, P. (2008). "Feminizing *Wolbachia* and the evolution of sex determination in isopods," in *Insect Symbiosis*, Vol. 3, *Contemporary Topics in Entomology*, eds K. Bourtzis and T. A. Miller (Boca Raton, FL: CRC Press), 273–294. doi: 10.1201/9781420064117.ch12
- Braquart-Varnier, C., Lachat, M., Herbinière, J., Johnson, M., Caubet, Y., Bouchon, D., et al. (2008). *Wolbachia* mediate variation of host immunocompetence. *PLoS ONE* 3:e3286. doi: 10.1371/journal.pone.003286
- Brownlie, J. C., and Johnson, K. N. (2009). Symbiont-mediated protection in insect hosts. *Trends Microbiol.* 17, 348–354. doi: 10.1016/j.tim.2009.05.005
- Caragata, E. P., Rancès, E., Hedges, L. M., Gofton, A. W., Johnson, K. N., O'Neill, S. L., et al. (2013). Dietary cholesterol modulates pathogen blocking by *Wolbachia*. *PLoS Pathog.* 9:e1003459. doi: 10.1371/journal.ppat.1003459
- Chevalier, F., Herbinière-Gaboreau, J., Bertaux, J., Raimond, M., Morel, F., Bouchon, D., et al. (2011). The immune cellular effectors of terrestrial isopod *Armadillidium vulgare*: meeting with their invaders, *Wolbachia*. *PLoS ONE* 6:e18531. doi: 10.1371/journal.pone.0018531
- Chevalier, F., Herbinière-Gaboreau, J., Charif, D., Mitta, G., Gavory, F., Wincker, P., et al. (2012). Feminizing *Wolbachia*: a transcriptomics approach with insights on the immune response genes in *Armadillidium vulgare*. *BMC Microbiol.* 12:S1. doi: 10.1186/1471-2180-12-S1-S1
- Cordaux, R., Michel-Salzat, A., Frelon-Raimond, M., Rigaud, T., and Bouchon, D. (2004). Evidence for a new feminizing *Wolbachia* strain in the isopod *Armadillidium vulgare*: evolutionary implications. *Heredity (Edinb.)* 93, 78–84. doi: 10.1038/sj.hdy.6800482
- Davidson, S. K., Allen, S. W., Lim, G. E., Anderson, C. M., and Haygood, M. G. (2001). Evidence for the biosynthesis of bryostatins by the bacterial symbiont "candidatus endobugula sertula" of the bryozoan *Bugula neritina*. *Appl. Environ. Microbiol.* 67, 4531–4537. doi: 10.1128/AEM.67.10.4531-4537.2001
- de Souza, D. J., Bézier, A., Depoix, D., Drezen, J.-M., and Lenoir, A. (2009). Blochmannia endosymbionts improve colony growth and immune defence in the ant *Camponotus fellah*. *BMC Microbiol.* 9:29. doi: 10.1186/1471-2180-9-29
- Douglas, A. E. (2011). Lessons from studying insect symbioses. *Cell Host Microbe* 10, 359–367. doi: 10.1016/j.chom.2011.09.001
- Dunn, A. M., and Smith, J. E. (2001). Microsporidian life cycles and diversity: the relationship between virulence and transmission. *Microbes Infect.* 3, 381–388. doi: 10.1016/S1286-4579(01)01394-6
- Eleftherianos, L., Atri, J., Accetta, J., and Castillo, J. C. (2013). Endosymbiotic bacteria in insects: guardians of the immune system? *Front. Physiol.* 4:46. doi: 10.3389/fphys.2013.00046
- Fleury, F., Vavre, F., Ris, N., Fouillet, P., and Boulétreau, M. (2000). Physiological cost induced by the maternally-transmitted endosymbiont *Wolbachia* in the *Drosophila* parasitoid *Leptopilina heterotoma*. *Parasitol.* 121(Pt 5), 493–500. doi: 10.1017/S0031182099006599
- Fytrou, A., Schofield, P. G., Kraaijeveld, A. R., and Hubbard, S. F. (2006). *Wolbachia* infection suppresses both host defence and parasitoid counter-defence. *Proc. Biol. Sci.* 273, 791–796. doi: 10.1098/rspb.2005.3383
- Glaser, R. L., and Meola, M. A. (2010). The native *Wolbachia* endosymbionts of *Drosophila melanogaster* and *Culex quinquefasciatus* increase host resistance to west nile virus infection. *PLoS ONE* 5:e11977. doi: 10.1371/journal.pone.0011977
- Gross, R., Vavre, F., Heddi, A., Hurst, G. D. D., Zchori-Fein, E., and Bourtzis, K. (2009). Immunity and symbiosis. *Mol. Microbiol.* 73, 751–759. doi: 10.1111/j.1365-2958.2009.06820.x
- Haine, E. R. (2008). Symbiont-mediated protection. *Proc. Biol. Sci.* 275, 353–361. doi: 10.1098/rspb.2007.1211
- Hedges, L. M., Brownlie, J. C., O'Neill, S. L., and Johnson, K. N. (2008). *Wolbachia* and virus protection in insects. *Science* 322:702. doi: 10.1126/science.1162418
- Hedges, L. M., and Johnson, K. N. (2008). Induction of host defence responses by *Drosophila* C virus. *J. Gen. Virol.* 89, 1497–1501. doi: 10.1099/vir.0.83684-0
- Hoffmann, A. A., and Turelli, M. (1988). Unidirectional incompatibility in *Drosophila simulans*: inheritance, geographic variation and fitness effects. *Genetics* 119, 435–444.

- Hoffmann, A. A., Turelli, M., and Harshman, L. G. (1990). Factors affecting the distribution of cytoplasmic incompatibility in *Drosophila simulans*. *Genetics* 126, 933–948.
- Hosokawa, T., Koga, R., Kikuchi, Y., Meng, X.-Y., and Fukatsu, T. (2010). *Wolbachia* as a bacteriocyte-associated nutritional mutualist. *Proc. Natl. Acad. Sci. U.S.A.* 107, 769–774. doi: 10.1073/pnas.0911476107
- Huigens, M. E., Hohmann, C. L., Luck, R. F., Gort, G., and Stouthamer, R. (2004). Reduced competitive ability due to *Wolbachia* infection in the parasitoid wasp *Trichogramma kaykai*. *Entomol. Exp. Appl.* 110, 115–123. doi: 10.1111/j.0013-8703.2004.00126.x
- Hurst, G. D. D., Bandi, C., Sacchi, L., Cochrane, A. G., Bertrand, D., Karaca, I., et al. (1999). *Adonia variegata* (Coleoptera: Coccinellidae) bears maternally inherited Flavobacteria that kill males only. *Parasitology* 118, 125–134. doi: 10.1017/S0031182098003655
- Jacobsen, C. S., and Bech, T. B. (2012). Soil survival of *Salmonella* and transfer to freshwater and fresh produce. *Food Res. Int.* 45, 557–566. doi: 10.1016/j.foodres.2011.07.026
- Jaenike, J., and Perlman, S. J. (2002). Ecology and evolution of host-parasite associations: mycophagous *Drosophila* and their parasitic nematodes. *Am. Nat.* 160(Suppl.), S23–S39. doi: 10.1086/342137
- Jaenike, J., Unckless, R., Cockburn, S. N., Boelio, L. M., and Perlman, S. J. (2010). Adaptation via symbiosis: recent spread of a *Drosophila* defensive symbiont. *Science* 329, 212–215. doi: 10.1126/science.1188235
- Kaiser, W., Huguët, E., Casas, J., Commin, C., and Giron, D. (2010). Plant green-island phenotype induced by leaf-miners is mediated by bacterial symbionts. *Proc. R. Soc. B Biol. Sci.* 277, 2311–2319. doi: 10.1098/rspb.2010.0214
- Kambris, Z., Cook, P. E., Phuc, H. K., and Sinkins, S. P. (2009). Immune activation by life-shortening *Wolbachia* and reduced filarial competence in mosquitoes. *Science* 326, 134–136. doi: 10.1126/science.1177531
- Kocher, T. D., Thomas, W. K., Meyer, A., Edwards, S. V., Pääbo, S., Villablanca, F. X., et al. (1989). Dynamics of mitochondrial DNA evolution in animals: amplification and sequencing with conserved primers. *Proc. Natl. Acad. Sci. U.S.A.* 86, 6196–6200. doi: 10.1073/pnas.86.16.6196
- Le Clech, W., Braquart-Varnier, C., Raimond, M., Ferdy, J. B., Bouchon, D., and Sicard, M. (2012). High virulence of *Wolbachia* after host switching: when autophagy hurts. *PLoS Pathog.* 8:e1002844. doi: 10.1371/journal.ppat.1002844
- Le Clech, W., Raimond, M., Bouchon, D., and Sicard, M. (2014). Strength of the pathogenicity caused by feminizing *Wolbachia* after transfer in a new host: strain or dose effect? *J. Invertebr. Pathol.* 116, 18–26. doi: 10.1016/j.jip.2013.12.003
- Le Clech, W., Raimond, M., Guillot, S., Bouchon, D., and Sicard, M. (2013). Horizontal transfers of feminizing versus non-feminizing *Wolbachia* strains: from harmless passengers to pathogens. *Environ. Microbiol.* 15, 2922–2936. doi: 10.1111/1462-2920.12172
- Loker, E., Loker, E., Adema, C., Adema, C., Zhang, S., Zhang, S., et al. (2004). Invertebrate immune systems-not homogenous, not simple, not well understood. *Immunol. Rev.* 198, 10–24. doi: 10.1111/j.0105-2896.2004.0117.x
- López-Villavicencio, M., Courjol, F., Gibson, A. K., Hood, M. E., Jonot, O., Shykoff, J. A., et al. (2011). Competition, cooperation among kin, and virulence in multiple infections. *Evolution (N. Y.)* 65, 1357–1366. doi: 10.1111/j.1558-5646.2010.01207.x
- Moreira, L. A., Iturbe-Ormaetxe, I., Jeffery, J. A., Lu, G., Pyke, A. T., Hedges, L. M., et al. (2009). A *Wolbachia* Symbiont in *Aedes aegypti* limits infection with dengue, chikungunya, and plasmodium. *Cell* 139, 1268–1278. doi: 10.1016/j.cell.2009.11.042
- Moret, Y., Juchault, P., and Rigaud, T. (2001). *Wolbachia* endosymbiont responsible for cytoplasmic incompatibility in a terrestrial crustacean: effects in natural and foreign hosts. *Heredity (Edinb.)* 86, 325–332. doi: 10.1046/j.1365-2540.2001.00831.x
- Pigeault, R., Braquart-Varnier, C., Marcadé, I., Mappa, G., Mottin, E., and Sicard, M. (2014). Modulation of host immunity and reproduction by horizontally acquired *Wolbachia*. *J. Insect Physiol.* 70, 125–133. doi: 10.1016/j.jinsphys.2014.07.005
- Rigaud, T., and Moreau, J. (2004). A cost of *Wolbachia*-induced sex reversal and female-biased sex ratios: decrease in female fertility after sperm depletion in a terrestrial isopod. *Proc. Biol. Sci.* 271, 1941–1946. doi: 10.1098/rspb.2004.2804
- Rottschaefer, S. M., and Lazzaro, B. P. (2012). No effect of *Wolbachia* on resistance to intracellular infection by pathogenic bacteria in *Drosophila melanogaster*. *PLoS ONE* 7:e40500. doi: 10.1371/journal.pone.0040500
- Sauders, B. D., Overvest, J., Fortes, E., Windham, K., Schukken, Y., Lembo, A., et al. (2012). Diversity of *Listeria* species in urban and natural environments. *Appl. Environ. Microbiol.* 78, 4420–4433. doi: 10.1128/AEM.00282-12
- Scarborough, C. L., Ferrari, J., and Godfray, H. C. J. (2005). Aphid protected from pathogen by endosymbiont. *Science* 310:1781. doi: 10.1126/science.1120180
- Schneider, D. S., and Ayres, J. S. (2008). Us about treating infectious diseases. *Nat. Rev. Immunol.* 8, 889–895. doi: 10.1038/nri2432
- Serbus, L. R., Casper-Lindley, C., Landmann, F., and Sullivan, W. (2008). The genetics and cell biology of *Wolbachia*-host interactions. *Annu. Rev. Genet.* 42, 683–707. doi: 10.1146/annurev.genet.41.110306.130354
- Sicard, M., Bouchon, D., Ceyrac, L., Raimond, R., Thierry, M., Le Clech, W., et al. (2014a). Bidirectional cytoplasmic incompatibility caused by *Wolbachia* in the terrestrial isopod *Porcellio dilatatus*. *J. Invertebr. Pathol.* 121, 28–36. doi: 10.1016/j.jip.2014.06.007
- Sicard, M., Dittmer, J., Grève, P., Bouchon, D., and Braquart-Varnier, C. (2014b). A host as an ecosystem: *Wolbachia* coping with environmental constraints. *Environ. Microbiol.* 16, 3583–3607. doi: 10.1111/1462-2920.12573
- Sicard, M., Chevalier, F., De Vlechouwer, M., Bouchon, D., Grève, P., and Braquart-Varnier, C. (2010). Variations of immune parameters in terrestrial isopods: a matter of gender, aging and *Wolbachia*. *Naturwissenschaften* 97, 819–826. doi: 10.1007/s00114-010-0699-2
- Stouthamer, R., Breeuwer, J. A., and Hurst, G. D. (1999). *Wolbachia pipientis*: microbial manipulator of arthropod reproduction. *Annu. Rev. Microbiol.* 53, 71–102. doi: 10.1146/annurev.micro.53.1.71
- Tagami, Y., Miura, K., and Stouthamer, R. (2001). How does infection with parthenogenesis-inducing *Wolbachia* reduce the fitness of *Trichogramma*? *J. Invertebr. Pathol.* 78, 267–271. doi: 10.1006/jipa.2002.5080
- Teixeira, L., Ferreira, Á., and Ashburner, M. (2008). The bacterial symbiont *Wolbachia* induces resistance to RNA viral infections in *Drosophila melanogaster*. *PLoS Biol.* 6:e2. doi: 10.1371/journal.pbio.1000002
- Vázquez-Boland, J. A., Kuhn, M., Berche, P., Chakraborty, T., Domi, G., González-zorn, B., et al. (2001). *Listeria* pathogenesis and molecular virulence determinants. *Clin. Microbiol. Rev.* 14, 584–640. doi: 10.1128/CMR.14.3.584
- Velge, P., Wiedemann, A., Rosselin, M., Abed, N., Boumart, Z., Chaussé, A. M., et al. (2012). Multiplicity of *Salmonella* entry mechanisms, a new paradigm for *Salmonella* pathogenesis. *Microbiologyopen* 1, 243–258. doi: 10.1002/mbo3.28
- von der Schulenburg, J. H. G., Habig, M., Sloggett, J. J., Webberley, K. M., Bertrand, D., Hurst, G. D. D., et al. (2001). Incidence of male killing *Rickettsia* spp. (alpha proteobacteria) in the ten spot ladybird beetle *Adalia decempunctata* L. (Coleoptera: Coccinellidae). *Appl. Environ. Microbiol.* 67, 270–277. doi: 10.1128/AEM.67.1.270
- Weinert, L. A., Araujo-Jnr, E. V., Ahmed, M. Z., and Welch, J. J. (2015). The incidence of bacterial endosymbionts in terrestrial arthropods. *Proc. R. Soc. Lond. B Biol. Sci.* 282. doi: 10.1098/rspb.2015.0249
- Weiss, B. L., Wang, J., and Aksoy, S. (2011). Tsetse immune system maturation requires the presence of obligate symbionts in larvae. *PLoS Biol.* 9:e1000619. doi: 10.1371/journal.pbio.1000619
- Wong, Z. S., Hedges, L. M., Brownlie, J. C., and Johnson, K. N. (2011). *Wolbachia*-mediated antibacterial protection and immune gene regulation in *Drosophila*. *PLoS ONE* 6:e1000619. doi: 10.1371/journal.pone.0025430
- Xie, J., Vilchez, I., and Mateos, M. (2010). Spiroplasma bacteria enhance survival of *Drosophila hydei* attacked by the parasitic wasp *Leptopilina heterotoma*. *PLoS ONE* 5:e12149. doi: 10.1371/journal.pone.0012149

- Ye, Y. H., Woolfit, M., Rancès, E., O'Neill, S. L., and McGraw, E. A. (2013). *Wolbachia*-associated bacterial protection in the mosquito *Aedes aegypti*. *PLoS Negl. Trop. Dis.* 7:e2362. doi: 10.1371/journal.pntd.0002362
- Yen, J. H., and Barr, A. R. (1971). New hypothesis of the cause of cytoplasmic incompatibility in *Culex pipiens* L. *Nature* 232, 657–658. doi: 10.1038/232657a0
- Zélé, F., Nicot, A., Duron, O., and Rivero, A. (2012). Infection with *Wolbachia* protects mosquitoes against Plasmodium-induced mortality in a natural system. *J. Evol. Biol.* 25, 1243–1252. doi: 10.1111/j.1420-9101.2012.02519.x
- Zug, R., and Hammerstein, P. (2014). Bad guys turned nice? A critical assessment of *Wolbachia* mutualisms in arthropod hosts. *Biol. Rev.* 90, 89–111. doi: 10.1111/brv.12098

Conflict of Interest Statement: The authors declare that the research was conducted in the absence of any commercial or financial relationships that could be construed as a potential conflict of interest.

Copyright © 2015 Braquart-Varnier, Altinli, Pigeault, Chevalier, Grève, Bouchon and Sicard. This is an open-access article distributed under the terms of the Creative Commons Attribution License (CC BY). The use, distribution or reproduction in other forums is permitted, provided the original author(s) or licensor are credited and that the original publication in this journal is cited, in accordance with accepted academic practice. No use, distribution or reproduction is permitted which does not comply with these terms.