



**HAL**  
open science

## Not all IGHV3-21 chronic lymphocytic leukemias are equal: prognostic considerations

Panagiotis Baliakas, Andreas Agathangelidis, Anastasia C Hadzidimitriou, Lesley-Ann Sutton, Eva Minga, Athina Tsanousa, Lydia Scarfò, Zadie Davis, Xiao-Jie Yan, Tait Shanafelt, et al.

► **To cite this version:**

Panagiotis Baliakas, Andreas Agathangelidis, Anastasia C Hadzidimitriou, Lesley-Ann Sutton, Eva Minga, et al.. Not all IGHV3-21 chronic lymphocytic leukemias are equal: prognostic considerations. *Blood*, 2015, 125 (5), pp.856-859. 10.1182/blood-2014-09-600874 . hal-01265855

**HAL Id: hal-01265855**

**<https://hal.science/hal-01265855>**

Submitted on 14 Dec 2023

**HAL** is a multi-disciplinary open access archive for the deposit and dissemination of scientific research documents, whether they are published or not. The documents may come from teaching and research institutions in France or abroad, or from public or private research centers.

L'archive ouverte pluridisciplinaire **HAL**, est destinée au dépôt et à la diffusion de documents scientifiques de niveau recherche, publiés ou non, émanant des établissements d'enseignement et de recherche français ou étrangers, des laboratoires publics ou privés.

## LYMPHOID NEOPLASIA

## Not all IGHV3-21 chronic lymphocytic leukemias are equal: prognostic considerations

Panagiotis Baliakas,<sup>1</sup> Andreas Agathangelidis,<sup>2,3</sup> Anastasia Hadzidimitriou,<sup>1,4</sup> Lesley-Ann Sutton,<sup>1</sup> Eva Minga,<sup>4</sup> Athina Tsanoua,<sup>5</sup> Lydia Scarfò,<sup>2,3</sup> Zadi Davis,<sup>6</sup> Xiao-Jie Yan,<sup>7</sup> Tait Shanafelt,<sup>8</sup> Karla Plevova,<sup>9</sup> Yorick Sandberg,<sup>10</sup> Fie Juhl Vojdeman,<sup>11</sup> Myriam Boudjogra,<sup>12</sup> Tatiana Tzenou,<sup>13</sup> Maria Chatzouli,<sup>14</sup> Charles C. Chu,<sup>7</sup> Silvio Veronese,<sup>15</sup> Anne Gardiner,<sup>6</sup> Larry Mansouri,<sup>1</sup> Karin E. Smedby,<sup>16</sup> Lone Bredo Pedersen,<sup>11</sup> Denis Moreno,<sup>17</sup> Kirsten Van Lom,<sup>18</sup> Véronique Giudicelli,<sup>17</sup> Hana Skuhrova Francova,<sup>9</sup> Florence Nguyen-Khac,<sup>19</sup> Panagiotis Panagiotidis,<sup>13</sup> Gunnar Juliusson,<sup>20</sup> Lefteris Angelis,<sup>5</sup> Achilles Anagnostopoulos,<sup>21</sup> Marie-Paule Lefranc,<sup>17</sup> Monica Facco,<sup>22,23</sup> Livio Trentin,<sup>22,23</sup> Mark Catherwood,<sup>24</sup> Marco Montillo,<sup>15</sup> Christian H. Geisler,<sup>11</sup> Anton W. Langerak,<sup>10</sup> Sarka Pospisilova,<sup>9</sup> Nicholas Chiorazzi,<sup>7</sup> David Oscier,<sup>6</sup> Diane F. Jelinek,<sup>25</sup> Nikos Darzentas,<sup>26</sup> Chrysoula Belessi,<sup>14</sup> Frederic Davi,<sup>19</sup> Paolo Ghia,<sup>2,3</sup> Richard Rosenquist,<sup>1</sup> and Kostas Stamatopoulos<sup>1,4,21</sup>

<sup>1</sup>Department of Immunology, Genetics and Pathology, Science for Life Laboratory, Uppsala University, Uppsala, Sweden; <sup>2</sup>Università Vita-Salute San Raffaele, Milan, Italy; <sup>3</sup>Division of Molecular Oncology and Department of Onco-Hematology, Istituto di Ricovero e Cura a Carattere Scientifico, San Raffaele Scientific Institute, Milan, Italy; <sup>4</sup>Institute of Applied Biosciences, Centre for Research and Technology-Hellas, Thessaloniki, Greece; <sup>5</sup>Department of Informatics, Aristotle University of Thessaloniki, Thessaloniki, Greece; <sup>6</sup>Department of Haematology, Royal Bournemouth Hospital, Bournemouth, United Kingdom; <sup>7</sup>The Feinstein Institute for Medical Research, North Shore-Long Island Jewish Health System, Manhasset, NY; <sup>8</sup>Division of Hematology, Department of Medicine, Mayo Clinic, Rochester, MN; <sup>9</sup>Central European Institute of Technology, Masaryk University and University Hospital Brno, Brno, Czech Republic; <sup>10</sup>Department of Immunology, Erasmus Medical Center, University Medical Center Rotterdam, Rotterdam, The Netherlands; <sup>11</sup>Department of Hematology, Rigshospitalet, Copenhagen, Denmark; <sup>12</sup>Hôpital Pitié-Salpêtrière, Service d'Hématologie Biologique, Paris, France; <sup>13</sup>First Department of Propaedeutic Medicine, University of Athens, Athens, Greece; <sup>14</sup>Hematology Department, Nikea General Hospital, Piraeus, Greece; <sup>15</sup>Molecular Pathology Unit and Haematology Department, Niguarda Cancer Center, Niguarda Ca' Granda Hospital, Milan, Italy; <sup>16</sup>Department of Medicine, Solna, Clinical Epidemiology Unit, Karolinska Institutet, Stockholm, Sweden; <sup>17</sup>ImMunoGeneTics (IMGT), Université de Montpellier, Laboratoire d'Informatique Gaspard-Monge, Institut de Génétique Humaine, Montpellier, France; <sup>18</sup>Department of Hematology, Erasmus Medical Center, University Medical Center Rotterdam, Rotterdam, The Netherlands; <sup>19</sup>Hematology Department and University Pierre et Marie Curie, Hôpital Pitié-Salpêtrière, Paris, France; <sup>20</sup>Lund University and Hospital Department of Hematology, Lund Stem Cell Center, Lund, Sweden; <sup>21</sup>Hematology Department and Hematopoietic Cell Transplantation Unit, Georgios Papanicolaou Hospital, Thessaloniki, Greece; <sup>22</sup>Department of Medicine, Hematology and Clinical Immunology Branch, Padua University School of Medicine, Italy; <sup>23</sup>Venetian Institute of Molecular Medicine, Padova, Italy; <sup>24</sup>Department of Hemato-Oncology, Belfast City Hospital, Belfast, United Kingdom; <sup>25</sup>Department of Immunology, Mayo Clinic, Rochester, MN; and <sup>26</sup>Central European Institute of Technology, Masaryk University, Brno, Czech Republic

## Key Points

- CLL stereotyped subset #2 (IGHV3-21/IGLV3-21) is uniformly aggressive independently of somatic hypermutation status.
- The prognosis for non-subset #2/IGHV3-21 CLL resembles that of the remaining CLL cases with similar somatic hypermutation status.

**An unresolved issue in chronic lymphocytic leukemia (CLL) is whether IGHV3-21 gene usage, in general, or the expression of stereotyped B-cell receptor immunoglobulin defining subset #2 (IGHV3-21/IGLV3-21), in particular, determines outcome for IGHV3-21-utilizing cases. We reappraised this issue in 8593 CLL patients of whom 437 (5%) used the IGHV3-21 gene with 254/437 (58%) classified as subset #2. Within subset #2, immunoglobulin heavy variable (IGHV)-mutated cases predominated, whereas non-subset #2/IGHV3-21 was enriched for IGHV-unmutated cases ( $P = .002$ ). Subset #2 exhibited significantly shorter time-to-first-treatment (TTFT) compared with non-subset #2/IGHV3-21 (22 vs 60 months,  $P = .001$ ). No such difference was observed between non-subset #2/IGHV3-21 vs the remaining CLL with similar IGHV mutational status. In conclusion, IGHV3-21 CLL should not be axiomatically considered a homogeneous entity with adverse prognosis, given that only subset #2 emerges as uniformly aggressive, contrasting non-subset #2/IGHV3-21 patients whose prognosis depends on IGHV mutational status as the remaining CLL. (*Blood*. 2015;125(5):856-859)**

## Introduction

The somatic hypermutation (SHM) status of the immunoglobulin heavy variable (IGHV) genes is one of the most robust prognostic markers in chronic lymphocytic leukemia (CLL), allowing the

identification of 2 groups with markedly different behavior. Those with no or few somatic mutations (“unmutated,” U-CLL) experience an aggressive disease, whereas those with a heavier

Submitted September 22, 2014; accepted December 9, 2014. Prepublished online as *Blood* First Edition paper, December 17, 2014; DOI 10.1182/blood-2014-09-600874.

P.G., R.R., and K.S. contributed equally to this study.

The online version of this article contains a data supplement.

The publication costs of this article were defrayed in part by page charge payment. Therefore, and solely to indicate this fact, this article is hereby marked “advertisement” in accordance with 18 USC section 1734.

© 2015 by The American Society of Hematology

SHM load (“mutated,” M-CLL) follow more indolent disease courses.<sup>1,2</sup>

However, patient stratification into M-CLL and U-CLL should not be unconditional: indeed, cases with borderline IGHV germline identity (GI) should be evaluated and characterized with caution because they comprise a mixture of indolent and aggressive cases.<sup>3-6</sup> Moreover, cases with particular B-cell receptor immunoglobulin (BcR IG; eg, those expressing specific IGHV genes) have been reported to not abide by the M-CLL/U-CLL categorization rule.<sup>7-9</sup> A paradigmatic example concerns IGHV3-21 gene usage, which has been correlated with shorter overall survival (OS) independently of SHM status.<sup>10-12</sup> Interestingly, more than half of CLL cases utilizing the IGHV3-21 gene display highly similar variable heavy complementarity determining region 3 (VH CDR3) sequences and light-chain gene usage<sup>9-14</sup>; thus, they fulfill the criteria of BcR IG stereotypy, a frequent phenomenon in CLL, occurring in ~30% of patients. These IGHV3-21-stereotyped cases form the largest stereotyped subset within CLL, namely subset #2 (~3% of all CLL),<sup>15</sup> with a distinctive biological profile.<sup>16-18</sup> Realizing that subset #2 represents such a major fraction of IGHV3-21 CLL inevitably raised questions about the relative prognostic significance of IGHV3-21 gene usage per se as opposed to subset #2 membership. Put differently, is it the specific gene or the particular stereotyped BcR IG that is linked to clinical aggressiveness?

Previous studies seeking answers to this question have reached quite contradictory results, likely because of the small cohort sizes and the different end points (time to first treatment [TTFT] and/or OS).<sup>10,11,13,14,19,20</sup> Although the jury is still out, IGHV3-21 gene usage is notably considered a feature of high-risk CLL and taken into consideration in the context of prospective clinical trials (NCT01243190, NCT01269385, NCT01625741, NCT00562328), clearly indicating the need for careful reappraisal, which is the focus of our study.

## Study design

### Patients

Overall, 8593 CLL patients were included in the study (supplemental Table 1, available on the *Blood* Web site). The study was approved by the local Ethics Review Committees.

### Biological markers

Interphase fluorescence in situ hybridization, CD38 and zeta-associated protein 70 (ZAP70) expression, polymerase chain reaction amplification, sequence analysis, and interpretation of IGHV-IGHD-IGHJ rearrangements, including stereotyped subset assignment, were performed as reported<sup>21-23</sup> (see also supplemental Methods).

### Statistical analysis

Differences in frequencies were evaluated using descriptive statistics. OS was measured from the date of diagnosis until the last follow-up or death, whereas TTFT was evaluated from the diagnostic date until the date of initial treatment. Survival curves were constructed with the Kaplan-Meier method, and the log-rank test was used to determine differences between survival proportions. Multivariate Cox regression models were used to test the simultaneous effect of factors on outcomes taking into account the relative effect of remaining parameters. All statistical analyses were performed using Statistica Software 10.0 (Stat Soft Inc., Tulsa, OK).

**Table 1. Main clinicobiological features of stereotyped subset #2 and non-subset #2/IGHV3-21 cases included in the survival analysis**

	Subset #2 (n = 212)	Non-subset #2/ IGHV3-21 (n = 143)	P
Male	132/254, 62%	87/183, 61%	ns
Age (median)	63.5 y	62.2 y	ns
Binet A	72/156, 46%	50/81, 61%	<b>.023</b>
U-CLL	86/212, 40%	84/143, 59%	<b>.0007</b>
CD38 expression	35/92, 38%	31/73, 42%	ns
ZAP70 expression	23/54, 43%	16/33, 48%	ns
del(13q)	50/81, 61%	27/51, 53%	ns
Trisomy 12	5/103, 5%	5/65, 8%	ns
del(11q)	23/109, 21%	10/70, 14%	ns
del(17p)	4/103, 4%	3/69, 4%	ns
TTFT	22 mo	60 mo	<b>.001</b>
TTFT (M-CLL)	23 mo	154 mo	<b>&lt;.0001</b>
TTFT (U-CLL)	19 mo	30 mo	ns

del(13q): isolated deletion of chromosome 13q; ns: nonsignificant. *P* values in bold indicate statistically significant differences.

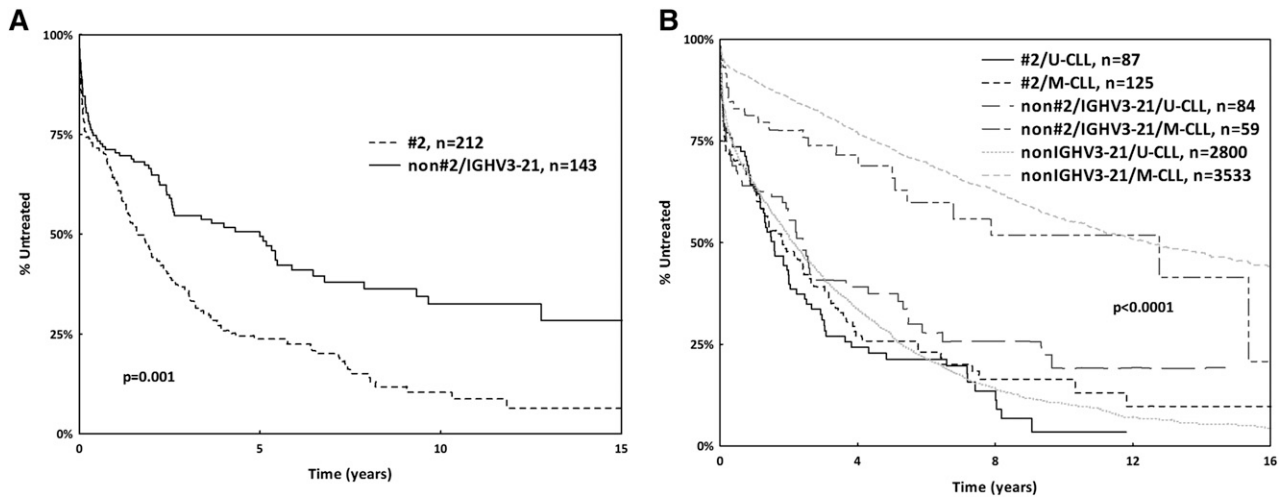
## Results and discussion

Within our series, 437/8593 cases (5%) expressed IGHV3-21 BcR IG. Of these, 254 (58%) were assigned to subset #2 as they shared homologous VH CDR3 sequences of identical length,<sup>15</sup> whereas the remaining 183 (42%) IGHV3-21-expressing cases exhibited heterogeneous VH CDR3 lengths and amino acid composition (“non-subset #2/IGHV3-21”; supplemental Table 2).

No differences were observed between subset #2 vs non-subset #2/IGHV3-21 cases regarding age at diagnosis, gender distribution, CD38 and ZAP70 expression, or cytogenetic abnormalities detected by fluorescence in situ hybridization; subset #2 was enriched for Binet B/C cases (Table 1 and supplemental Table 3). Both groups exhibited mixed SHM status (ie, were composed of both M-CLL and U-CLL); however, non-subset #2/IGHV3-21 cases had overall a significantly lower ( $P = .002$ ) SHM load, with 53% (97/183) of the non-subset #2/IGHV3-21 cases composed of U-CLL as opposed to 39% (98/254) of subset #2 cases. Subset #2 was enriched for cases with borderline identity (97% to 97.99%), whereas non-subset #2/IGHV3-21 M-CLL cases carried a heavier SHM load, more frequently displaying IGHV GI below 97% (supplemental Table 2A).

In order to avoid the possible confounding effects of different treatments, survival analysis was restricted to assessing TTFT in 6744 cases with treatment information (IGHV3-21:  $n = 355$ , 5.2%). Subset #2 exhibited a short median TTFT of 22 months, similar to all non-IGHV3-21 U-CLL (24 months,  $P = ns$ ). Within subset #2, gender, CD38 or ZAP70 expression, the presence of del(13q) or del(17p), and also SHM status had no impact on TTFT (supplemental Table 4 and supplemental Figure 1). Notably, however, among M-CLL subset #2 cases, the presence of del(11q) was associated with significantly shorter TTFT (13 vs 29 months,  $P = .03$ ); no such differences were observed among U-CLL subset #2 cases ( $P = .26$ ; supplemental Figure 2A-C).

In contrast, non-subset #2/IGHV3-21 cases had significantly longer TTFT compared with subset #2 CLL (60 vs 22 months,  $P = .001$ ; Figure 1A), also when limiting the analysis to Binet stage-A cases ( $P = .01$ ; supplemental Figure 2D). This was because of the superior outcome of non-subset #2/IGHV3-21 M-CLL cases (median TTFT 153 months) vs non-subset #2/IGHV3-21 U-CLL cases, which did



**Figure 1. Kaplan Meier curves for TTFT.** (A) Subset #2 exhibits significantly shorter TTFT compared with non-subset #2/IGHV3-21 CLL. (B) No difference regarding TTFT between non-subset #2/IGHV3-21 cases and the remaining CLL. Subset #2 exhibits TTFT similar to that of U-CLL independently of IGHV gene mutational status.

not differ significantly from subset #2 or all remaining U-CLL cases utilizing IGHV genes other than IGHV3-21 (30 vs 22 vs 24 months, respectively,  $P = .4$ ). Given the aforementioned differences in SHM load, we also investigated separately cases carrying IGHV genes with <97% GI and found again significantly longer TTFT for non-subset #2/IGHV3-21 vs subset #2 cases (supplemental Figure 3). In multivariate analysis, U-CLL was the only parameter with independent significance ( $P = .01$ ; supplemental Table 5), indicating that the prognosis of non-subset #2/IGHV3-21 cases is associated with SHM status (Figure 1B) rather than use of a specific IGHV gene and BcR IG as is the case with subset #2.

This conclusion is based on TTFT assessment and also confirmed within early stage patients only. Most published studies reached an opposite conclusion when assessing OS,<sup>10,11,19</sup> which can be considered a limitation because patients may have been treated differently. That notwithstanding, it is worth mentioning that we could not discern any impact of SHM status on OS within subset #2, whereas the OS of non-subset #2/IGHV3-21 cases was influenced by the SHM status (supplemental Figure 4). However, definitive conclusions regarding OS can be reached only by prospective studies on uniformly treated patients.

Interestingly, our study also suggests the possibility to further refine prognosis within subset #2, where the presence of del(11q) within M-CLL subset #2 cases seems to be associated with a more unfavorable clinical profile. Further investigations are required before reaching definitive conclusions regarding this issue and, more generally, the precise impact of genetic aberrations (eg, *SF3B1* mutations), which are very frequent in subset #2, yet their prognostic implications remain disputed.<sup>17,18</sup>

In conclusion, IGHV3-21 gene usage in CLL should not be axiomatically considered as an adverse prognostic indicator (ie, not included tout court in the stratification algorithm of prospective clinical trials). Hence, subset #2 emerges as uniformly aggressive, thus contrasting with non-subset #2/IGHV3-21 patients whose prognosis differs depending on SHM status, similar to all other CLL. Consequently, we argue that knowledge about subset #2 membership is clinically relevant, in particular for stratification purposes within clinical trials. More generally, our findings also support the concept of stratifying CLL based on the molecular

features of the BcR IG,<sup>24</sup> the ideal clonotypic marker, present in every CLL clone and unaffected by clonal evolution.<sup>25</sup>

## Acknowledgments

This work was supported in part by the ENosAI project (code 09SYN-13-880) cofunded by the European Union and the General Secretariat for Research and Technology of Greece; the KRIPIS action, funded by the General Secretariat for Research and Technology of Greece; the Swedish Cancer Society, the Swedish Research Council, Uppsala University Hospital, and Lion's Cancer Research Foundation, Uppsala; the National Institutes of Health, National Cancer Institute (grant CA136591) (D.F.J.); Associazione Italiana per la Ricerca sul Cancro (AIRC) (Investigator Grant and Special Program Molecular Clinical Oncology, 5 per mille #9965) and Ricerca Finalizzata 2010 (RF-2010-2318823), Italian Ministry of Health, Roma; Central European Institute of Technology (CEITEC) grants MU (CZ.1.05/1.1.00/02.0068), SuPreMMe (CZ.1.07/2.3.00/20.0045), and NT13493/2012-4.

## Authorship

Contribution: P.B. performed research and wrote the manuscript; A. Agathangelidis, A.H., L.-A.S., E.M., A.T., L.S., Z.D., X.-J.Y., T.S., K.P., Y.S., F.J.V., M.B., T.T., M.C., C.C.C., S.V., A.G., L.M., K.E.S., L.B.P., D.M., K.V.L., V.G., H.S.F., F.N.-K., P.P., G.J., L.A., A. Anagnostopoulos, M.-P.L., M.F., L.T., M.C., M.M., C.H.G., A.W.L., S.P., N.C., D.O., D.F.J., N.D., C.B., and F.D. performed research; P.G., R.R., and K.S. designed the study and wrote the manuscript; and all authors approved the manuscript.

Conflict-of-interest disclosure: The authors declare no competing financial interests.

Correspondence: Kostas Stamatopoulos, Institute of Applied Biosciences, Center for Research and Technology Hellas, 57001 Thessaloniki, Greece; e-mail: kostas.stamatopoulos@gmail.com.

## References

- Damle RN, Wasil T, Fais F, et al. Ig V gene mutation status and CD38 expression as novel prognostic indicators in chronic lymphocytic leukemia. *Blood*. 1999;94(6):1840-1847.
- Hamblin TJ, Davis Z, Gardiner A, Oscier DG, Stevenson FK. Unmutated Ig V(H) genes are associated with a more aggressive form of chronic lymphocytic leukemia. *Blood*. 1999;94(6):1848-1854.
- Hamblin TJ, Davis ZA, Oscier DG. Determination of how many immunoglobulin variable region heavy chain mutations are allowable in unmutated chronic lymphocytic leukaemia - long-term follow up of patients with different percentages of mutations. *Br J Haematol*. 2008;140(3):320-323.
- Kröber A, Seiler T, Benner A, et al. V(H) mutation status, CD38 expression level, genomic aberrations, and survival in chronic lymphocytic leukemia. *Blood*. 2002;100(4):1410-1416.
- Langerak AW, Davi F, Ghia P, et al; European Research Initiative on CLL (ERIC). Immunoglobulin sequence analysis and prognostication in CLL: guidelines from the ERIC review board for reliable interpretation of problematic cases. *Leukemia*. 2011;25(6):979-984.
- Ghia P, Stamatopoulos K, Belessi C, et al; European Research Initiative on CLL. ERIC recommendations on IGHV gene mutational status analysis in chronic lymphocytic leukemia. *Leukemia*. 2007;21(1):1-3.
- Agathangelidis A, Vardi A, Baliakas P, Stamatopoulos K. Stereotyped B-cell receptors in chronic lymphocytic leukemia. *Leuk Lymphoma*. 2014;55(10):2252-2261.
- Bomben R, Dal-Bo M, Benedetti D, et al. Expression of mutated IGHV3-23 genes in chronic lymphocytic leukemia identifies a disease subset with peculiar clinical and biological features. *Clin Cancer Res*. 2010;16(2):620-628.
- Stamatopoulos K, Belessi C, Moreno C, et al. Over 20% of patients with chronic lymphocytic leukemia carry stereotyped receptors: pathogenetic implications and clinical correlations. *Blood*. 2007;109(1):259-270.
- Thorsélius M, Kröber A, Murray F, et al. Strikingly homologous immunoglobulin gene rearrangements and poor outcome in VH3-21-using chronic lymphocytic leukemia patients independent of geographic origin and mutational status. *Blood*. 2006;107(7):2889-2894.
- Tobin G, Thunberg U, Johnson A, et al. Chronic lymphocytic leukemias utilizing the VH3-21 gene display highly restricted Vlambda2-14 gene use and homologous CDR3s: implicating recognition of a common antigen epitope. *Blood*. 2003;101(12):4952-4957.
- Tobin G, Thunberg U, Johnson A, et al. Somatically mutated Ig V(H)3-21 genes characterize a new subset of chronic lymphocytic leukemia. *Blood*. 2002;99(6):2262-2264.
- Bomben R, Dal Bo M, Capello D, et al. Comprehensive characterization of IGHV3-21-expressing B-cell chronic lymphocytic leukemia: an Italian multicenter study. *Blood*. 2007;109(7):2989-2998.
- Ghia P, Stamatopoulos K, Belessi C, et al. Geographic patterns and pathogenetic implications of IGHV gene usage in chronic lymphocytic leukemia: the lesson of the IGHV3-21 gene. *Blood*. 2005;105(4):1678-1685.
- Agathangelidis A, Darzentas N, Hadzidimitriou A, et al. Stereotyped B-cell receptors in one-third of chronic lymphocytic leukemia: a molecular classification with implications for targeted therapies. *Blood*. 2012;119(19):4467-4475.
- Marincevic M, Cahill N, Gunnarsson R, et al. High-density screening reveals a different spectrum of genomic aberrations in chronic lymphocytic leukemia patients with 'stereotyped' IGHV3-21 and IGHV4-34 B-cell receptors. *Haematologica*. 2010;95(9):1519-1525.
- Rossi D, Spina V, Bomben R, et al. Association between molecular lesions and specific B-cell receptor subsets in chronic lymphocytic leukemia. *Blood*. 2013;121(24):4902-4905.
- Strefford JC, Sutton LA, Baliakas P, et al. Distinct patterns of novel gene mutations in poor-prognostic stereotyped subsets of chronic lymphocytic leukemia: the case of SF3B1 and subset #2. *Leukemia*. 2013;27(11):2196-2199.
- Cahill N, Sutton LA, Jansson M, et al. IGHV3-21 gene frequency in a Swedish cohort of patients with newly diagnosed chronic lymphocytic leukemia. *Clin Lymphoma Myeloma Leuk*. 2012;12(3):201-206.
- Ghia EM, Jain S, Widhopf GF II, et al. Use of IGHV3-21 in chronic lymphocytic leukemia is associated with high-risk disease and reflects antigen-driven, post-germinal center leukemogenic selection. *Blood*. 2008;111(10):5101-5108.
- Baliakas P, Iskas M, Gardiner A, et al. Chromosomal translocations and karyotype complexity in chronic lymphocytic leukemia: a systematic reappraisal of classic cytogenetic data. *Am J Hematol*. 2014;89(3):249-255.
- Murray F, Darzentas N, Hadzidimitriou A, et al. Stereotyped patterns of somatic hypermutation in subsets of patients with chronic lymphocytic leukemia: implications for the role of antigen selection in leukemogenesis. *Blood*. 2008;111(3):1524-1533.
- Thunberg U, Johnson A, Roos G, et al. CD38 expression is a poor predictor for VH gene mutational status and prognosis in chronic lymphocytic leukemia. *Blood*. 2001;97(6):1892-1894.
- Stevenson FK, Caligaris-Cappio F. Chronic lymphocytic leukemia: revelations from the B-cell receptor. *Blood*. 2004;103(12):4389-4395.
- Baliakas P, Hadzidimitriou A, Sutton LA, et al. Clinical effect of stereotyped B-cell receptor immunoglobulins in chronic lymphocytic leukaemia: a retrospective multicentre study. *Lancet Haematol*. 2014;1(2):e74-e84.