



**HAL**  
open science

## Effect of temperature, food availability, and estradiol injection on gametogenesis and gender in the pearl oyster *Pinctada margaritifera*

V. Teaniniuraitemoana, M. Leprêtre, P. Levy, V. Vanaa, S. Parrad, Nabila Gaertner-Mazouni, Yannick Gueguen, Arnaud Huvet, Gilles Le Moullac

### ► To cite this version:

V. Teaniniuraitemoana, M. Leprêtre, P. Levy, V. Vanaa, S. Parrad, et al.. Effect of temperature, food availability, and estradiol injection on gametogenesis and gender in the pearl oyster *Pinctada margaritifera*. *Journal of Experimental Zoology Part A: Ecological Genetics and Physiology*, 2016, 325 (1), pp.13-24. 10.1002/jez.1992 . hal-01260132

**HAL Id: hal-01260132**

**<https://hal.science/hal-01260132>**

Submitted on 12 Jan 2021

**HAL** is a multi-disciplinary open access archive for the deposit and dissemination of scientific research documents, whether they are published or not. The documents may come from teaching and research institutions in France or abroad, or from public or private research centers.

L'archive ouverte pluridisciplinaire **HAL**, est destinée au dépôt et à la diffusion de documents scientifiques de niveau recherche, publiés ou non, émanant des établissements d'enseignement et de recherche français ou étrangers, des laboratoires publics ou privés.

# Effect of Temperature, Food Availability, and Estradiol Injection on Gametogenesis and Gender in the Pearl Oyster *Pinctada margaritifera*



VAIHITI TEANINIURAITEMOANA<sup>1</sup>,  
 MAXIME LEPRÊTRE<sup>1</sup>, PEVA LEVY<sup>1</sup>,  
 VINCENT VANAA<sup>1</sup>, SOPHIE PARRAD<sup>1</sup>,  
 NABILA GAERTNER-MAZOUNI<sup>2</sup>,  
 YANNICK GUEGUEN<sup>3</sup>, ARNAUD HUVET<sup>4</sup>,  
 AND GILLES LE MOULLAC<sup>1\*</sup>

<sup>1</sup>Ifremer, UMR 241 Ecosystèmes Insulaires Océaniques (EIO), Labex CORAIL, Centre du Pacifique, Taravao, Tahiti, French Polynesia

<sup>2</sup>Université de la Polynésie Française, UMR 241 Ecosystèmes Insulaires Océaniques (EIO), Labex CORAIL, Faa'a, Tahiti, French Polynesia

<sup>3</sup>Ifremer, UMR 5244 Interactions Hôtes-Pathogènes-Environnement (IHPE), Université de Montpellier, Montpellier Cedex 5, France

<sup>4</sup>Ifremer, UMR 6539 Laboratoire des sciences de l'Environnement Marin (LEMAR), ZI de la Pointe du Diable, Plouzané, France

## ABSTRACT

The black-lip pearl oyster *Pinctada margaritifera* is a protandrous hermaphrodite species. Its economic value has led to the development of controlled hatchery reproduction techniques, although many aspects remain to be optimized. In order to understand reproductive mechanisms and their controlling factors, two independent experiments were designed to test hypotheses of gametogenesis and sex ratio control by environmental and hormonal factors. In one, pearl oysters were exposed under controlled conditions at different combinations of temperature (24 and 28°C) and food level (10,000 and 40,000 cells mL<sup>-1</sup>); whereas in the other, pearl oysters were conditioned under natural conditions into the lagoon and subjected to successive 17β-estradiol injections (100 μg per injection). Gametogenesis and sex ratio were assessed by histology for each treatment. In parallel, mRNA expressions of nine marker genes of the sexual pathway (*pmarg-foxl2*, *pmarg-c43476*, *pmarg-c45042*, *pmarg-c19309*, *pmarg-c54338*, *pmarg-vit6*, *pmarg-zglp1*, *pmarg-dmrt*, and *pmarg-fem1-like*) were investigated. Maximum maturation was observed in the treatment combining the highest temperature (28°C) and the highest microalgae concentration (40,000 cells mL<sup>-1</sup>), where the female sex tended to be maintained. Injection of 17β-estradiol induced a significant increase of undetermined stage proportion 2 weeks after the final injection. These results suggest that gametogenesis and gender in adult pearl oysters can be controlled by environmental factors and estrogens. While there were no significant effects on relative gene expression, the 3-gene-pair expression ratio model of the sexual pathway of *P. margaritifera*, suggest a probable dominance of genetic sex determinism without excluding a mixed sex determination mode (genetic + environmental). *J. Exp. Zool.* 9999A:XX-XX, 2015. © 2015 Wiley Periodicals, Inc.

**How to cite this article:** Teaniniuraitemoana V, Leprêtre M, Levy P, Vanaa V, Parrad S, Gaertner-Mazouni N, Gueguen Y, Huvet A, Le Moullac G. 2015. Effect of temperature, food availability, and estradiol injection on gametogenesis and gender in the pearl oyster *Pinctada margaritifera*. *J. Exp. Zool.* 9999A:XX–XX.

The black pearl industry, which is the second most important economic resource for French Polynesia after tourism, is based on the exploitation of the black-lip pearl oyster *Pinctada margaritifera* (L.). Breeding of selected donor oyster lines providing high-performance graft tissue is a way to improve the production of quality pearls (Tayalé et al., 2012; Ky et al., 2013, 2014). Such genetic selection is based on controlled pearl oyster reproduction in laboratory, which requires an understanding of the physiological mechanisms involved and the factors controlling them (Gueguen et al., 2013). The artificial reproduction of the pearl oyster *P. margaritifera* implies being able to control gametogenesis and the synchronization of maturity stages of the breeders, but most important, requires the management of sex ratio for broodstock husbandry, which appears to be the main limitation. Indeed, reproduction of pearl oyster under controlled conditions mainly depends on the availability of females, which unfortunately are not abundant among young farmed batches of this species due to its protandrous hermaphroditism (Tranter, '58). This particular reproductive strategy represents a problem of generation time for the renewal of oyster lines in hatcheries because it takes 4–5 years for a significant number of females to produce offspring (Chávez-Villalba et al., 2011).

In the animal kingdom, sex determination can be genetic (GSD); environmental (ESD); or the result of an interaction of both these factors (Valenzuela et al., 2003; Wedekind and Stelkens, 2010). The main factors involved in ESD mechanisms are temperature, food availability, and population density (Pradeep et al., 2012). In marine bivalves, only a few studies have covered the influence of these latter parameters on sex ratio. Stenyakina et al. (2010) showed a male-biased sex ratio in fasting mussel *M. charruana*. In Pacific oyster *Crassostrea gigas*, an alternative and irregular protandrous hermaphrodite, a male-biased sex ratio was obtained in adults by conditioning at low temperature (8°C) (Fabioux et al., 2005) whereas in spat of the same species it was obtained by conditioning at high temperature (25°C) (Santerre et al., 2013).

The pearl oyster is a suspension feeder particularly abundant in the Polynesian archipelagos where annual temperatures range from 22 to 31°C (Zanini and Salvat, 2000; Fournier et al., 2012; Le Moullac et al., 2012). *P. margaritifera* reaches sexual maturity at the end of its first year. Its production of gametes is continuous, asynchronous, and linked to the pearl oyster size (Pouvreau et al., 2000). Most studies show that the reproduction cycle in bivalves is generally influenced by environmental factors (Sastry, '79; Bayne and Newell, '83; Gervis and Sims, '92). In temperate areas,

Fabioux et al. (2005) showed that the gametogenic cycle of *C. gigas* depends on temperature and food availability. In tropical area such as French Polynesia, however, there is no clear seasonal cycle because there is little temperature variations. Pearl oysters are reproductively active almost all year round (Pouvreau et al., 2000; Le Moullac et al., 2012), with abundant trophic resources promoting gametogenesis and spawning (Fournier et al., 2012). A recent study in *P. margaritifera* confirmed that gametogenesis is modulated by food level: under-feeding decreases or stops germinal activity preventing any resumption of gametogenesis (Le Moullac et al., 2013). However, a better understanding of the influence of environmental factors on gametogenesis remains essential for controlling this crucial step in the rearing cycle.

Although some debates occur in the scientific community (Scott, 2012, 2013), fluctuations in levels of sex steroids have been found to be correlated with the sexual maturation cycle in a number of bivalves, thus suggesting that sex steroids may play important stimulatory roles in their reproductive regulation (Matsumoto et al., '97; Osada et al., 2004; Gauthier-Clerc et al., 2006; Ketata et al., 2007). This hypothesis is supported by Varaksina and Varaksin ('91) and Varaksina et al. ('92) who reported that injections of estradiol, progesterone and testosterone stimulated both oogenesis and spermatogenesis in adult Japanese scallop *Mizuhopecten yessoensis*. In the clam *Mulinia lateralis*, administration of methyltestosterone accelerated sex maturation and resulted in an increase in spawning frequency (Moss, '89), while estradiol injections stimulated vitellogenesis in the oyster *C. gigas* (Li et al., '98; Osada et al., 2003). There is also evidence indicating that the gender of bivalves can be affected by sex steroids. Moss ('89), showed that methyltestosterone fed to spawned clam *M. lateralis* increased the male/female ratio from 0.8 to 1.6. Mori et al. ('69) showed that injection of estradiol into the oyster

Grant sponsor: ANR "POLYPERL" project; grant number: ANR-11-AGRO-006; grant sponsor: Contract Project "BiodiPerl"; grant sponsor: la Délégation à la Recherche de Polynésie française.

Conflicts of interest: None.

\*Correspondence to: Gilles Le Moullac, Ifremer, UMR 241 EIO, Centre du Pacifique, BP 7004, 98719 Taravao, French Polynesia, France.

E-mail: Gilles.Le.Moullac@ifremer.fr

Received 17 May 2015; Revised 29 September 2015; Accepted 30 September 2015

DOI: 10.1002/jez.1992

Published online XX Month Year in Wiley Online Library (wileyonlinelibrary.com).

*C. gigas* at early stages of seasonal maturation induced sex reversal from male to female. In the pearl oyster *P. margaritifera*, no studies have yet been published on the possible effects of sex steroids on gametogenesis or gender determination.

The genetic and/or environmental process that establishes the gender of an organism (Penman and Piferrer, 2008), leads to specific molecular cascades transforming an undifferentiated gonad into a testis or an ovary (Piferrer and Guiguen, 2008). Recently, a gonad transcriptome analysis of *P. margaritifera*, using Illumina-based RNAseq, made it possible to propose a new model of the reproduction of *P. margaritifera* based on a dual histo-molecular approach (Teaniuiraitemoana et al., 2015); this revealed that the regression phase of the gonad could open the time window for adult sex-determination. In addition, after examining expression of nine identified marker genes of the sexual pathway, a model was formed based on the expression ratios of three gene pairs. This model makes it possible to predict sexual pathway in this hermaphrodite species. This three-genes-pair ratio sexual pathway signature concerns the ratios *pmarg-c43476/pmarg-fem1-like*, *pmarg-foxl2/pmarg-c54338*, and *pmarg-foxl2/pmarg-fem1-like* and strongly suggests the involvement of *pmarg-foxl2* and *pmarg-fem1-like* in sex determination and differentiation in *P. margaritifera* (Teaniuiraitemoana et al., 2015).

In this context, the main objective of the present study was to examine, using two separate experiments: (i) the effect of environmental combinations of temperature (24 and 28°C) and trophic level (10,000 and 40,000 microalgae cells mL<sup>-1</sup>); and (ii) the effect of injected 17β-estradiol (100 μg) on gender, especially sex ratio, gametogenesis, and mRNA level of nine marker genes of the sexual pathway.

## MATERIALS AND METHODS

### Biological Material

The effect of environmental factors (temperature and trophic level) has been tested on 360 three-years-old male and female adult pearl oysters with an average size of 118 mm ± 8.67. These pearl oysters were transported from Takaroa (Tuamotu Archipelago, French Polynesia) to Vairao lagoon (Tahiti, French Polynesia) where they were acclimated for 3.5 months.

The effect of 17β-estradiol injection was tested on 260 two and a half-years-old male pearl oysters with an average size of 65 mm ± 8.13. These pearl oysters were issued from a multi-familial cross, according to Ky et al. (2013), in the Ifremer hatchery by crossbreeding broodstock oysters (four males and six females) originated from the Apataki atoll (Tuamotu Archipelago, French Polynesia) in June 2011, and were reared in the Vairao lagoon.

### Initial Biopsy and Standardization by Gonad Regression

Before the start (d0) of the two experiments (environmental: Exp1, February to April 2013; and hormonal: Exp2, January to

March 2014), all pearl oysters (n = 360 for Exp1 and n = 260 for Exp2) were labeled individually and sexed by biopsy. They were then placed in the lagoon for a minimum of 2 weeks for recovery. The biopsy was performed using a needle mounted on a piston syringe inserted in the gonadic part of the visceral mass to collect the gametes. Sex was determined by observation under a binocular dissecting microscope (Leica MZ8, Germany).

After the recovery period in the lagoon, pearl oysters were subjected to a period of under-feeding to stop the production of gonial cells (Le Moullac et al., 2013) and synchronize gametogenesis. For Exp1, oysters were placed randomly in eight tanks (250 L) and then fed for 7 days on 4,400 cells mL<sup>-1</sup> microalgae (1/3 *Chaetoceros gacilis* and 2/3 *Isochrysis galbana*) at a temperature of 28°C. For Exp 2, oysters were placed randomly in 26 tanks (30L) and maintained for 10 days with continuously renewed sea water at 28°C and a mean chlorophyll-*a* concentration of 0.015 μg L<sup>-1</sup>. This phase ended by the sampling of 40 and 20 individuals in Exp1 and Exp2, respectively, to define the initial state in gametogenesis of population in each experiment before treatments.

### Pearl Oyster Conditioning According to Temperature and Trophic Level (Exp1)

Pearl oysters were reared at two trophic levels (10,000 cells mL<sup>-1</sup> and 40,000 cells mL<sup>-1</sup>) and two temperatures (24–28°C) for 8 weeks. Four experimental treatments were realized in the laboratory in duplicate (24°C-10,000 cells mL<sup>-1</sup>, 24°C-40,000 cells mL<sup>-1</sup>, 28°C-10,000 cells mL<sup>-1</sup>, 28°C-40,000 cells mL<sup>-1</sup>). Oysters (n = 320) were distributed between eight experimental tanks (250 L), with 32 males and 8 females per tank. Seawater renewal (100 L h<sup>-1</sup>) was maintained constant. Homogenization of the environment in the tanks was achieved by “air-lifts,” and photoperiod was maintained at 12:12. The tanks were cleaned once a week. Pearl oysters were fed with a mixed diet composed of 2:1 (v:v) of *Isochrysis galbana* (T-Iso) and *Chaetoceros gracilis* cells, supplied continuously with Blackstone dosing pumps (Hanna Instruments, France). Cooled sea water was produced using a plate heat exchanger stocked with cold fresh water, and warmed sea water was produced using a 2,500-watt electric heater. Each rearing tank was sampled automatically every 3 min for fluorescence and temperature measurements. The fluorometer (Seapoint Chlorophyll Fluorometer, Seapoint Sensors Inc., UK) was first calibrated for algal concentration (cells mL<sup>-1</sup>) and the temperature probe was calibrated using a reference electronic thermometer (Ebro TFX 430, Conrad, Germany). After 30 days (d30), 16 males and 4 females were randomly sampled from each tank. The 160 remaining pearl oysters were sacrificed at the end of the experiment after 60 days (d60) to assess the final state.

### Pearl Oyster Conditioning Using Estradiol Injection (Exp2)

17β-estradiol (E<sub>2</sub>) was purchased from Sigma–Aldrich (Stenheim, Germany). E<sub>2</sub> was dissolved in 100% ethanol, which was then

diluted 1:100 with 1- $\mu\text{m}$  filtered sterilized seawater to give a 0.5  $\mu\text{g } \mu\text{L}^{-1}$  stock solution. From this solution, 200  $\mu\text{L}$  were injected directly into the gonad of each animal ( $n = 120$ ). The remaining pearl oyster ( $n = 120$ ), were injected with 200  $\mu\text{L}$  of a 1:100 mixture of ethanol and sterilized seawater to serve as a control. Three successive injections were performed once a week at the beginning (day 0, d0), at day 7 (d7) and at day 14 (d14) of the experiment. To minimize stress caused by gonad injections, oysters were anesthetized using  $\text{MgCl}_2$  following the protocol provided by Suquet et al. (2009). After each injection, the pearl oysters were put back in the lagoon, where they were hung on ropes in groups of 20 on a submerged long-line at 7 m depth. Two weeks after the last injection (d28), the first half of the pearl oysters was collected. The second half was sacrificed at the end of the experiment, 6 weeks after the final injection (d56).

### Histology

For each oyster, gonad tissue was sampled for histological examination using methods described by Fournier et al. (2012). After dissection, each visceral masse was fixed for 48 hr in formalin solution 10% diluted in seawater before being transferred to 70% ethanol for preservation. Then, the visceral masses were cut along the sagittal plane with a microtome blade and were dehydrated through a graded ethanol series, embedded in paraffin, sectioned at 3–4  $\mu\text{m}$  on a rotary microtome, stained with Giemsa dye and, finally, mounted on microscope slides. Gonad development stage and sex were then determined under a light microscope (Leica 4000) and thus, samples were classified according to the ten different categories of gonadic tissues described previously in Teaniniuraitemoana et al. (2014): male and female at “Early” stage (the gonad is in early gametogenesis), “Intermediate” stage (the gonad is developing), at “Mature” stage (the oyster is ready to spawn), “Regressed” stage (the gonad has stopped generating gametes); “Inversion” (the gonad presents male and female gametes together), and “Undetermined” (the gonad contains no gametes at all).

### Real Time PCR

For each oyster, a piece of gonad tissue was sampled, put in RNAlater™ (Qiagen, France) (50 mg/mL) and then stored at  $-80^\circ\text{C}$  for subsequent total RNA extraction.

Total RNA was extracted using TRIzol® Reagent (Invitrogen, France) and treated with DNase I using a DNA-free™ Kit (Ambion, France) following manufacturer's instructions. RNA concentrations were measured using an ND-100 spectrophotometer (Nanodrop Technologies, USA) at 260 nm, using the conversion factor 1 OD = 40  $\mu\text{g}/\text{mL}$  RNA. For each sample, 0.5  $\mu\text{g}$  of total RNA were reverse-transcribed using a Transcriptor First Strand cDNA Kit (Roche, France) and amplified by real time PCR on a Stratagene MX3000P. The amplification reaction contained 12.5  $\mu\text{L}$  2X SYBR green qPCR Master Mix (Stratagene, France), 10  $\mu\text{L}$  cDNA template, and 2.5  $\mu\text{L}$  of each primer (4  $\mu\text{M}$ ) in a final

volume of 25  $\mu\text{L}$ . Each run included a positive cDNA control and a blank control (water) for each primer pair. Relative gene expression was calculated using two reference genes, *ef1a* and *gapdh1*, using the  $2^{-\Delta\text{Ct}}$  method (Livak and Schmittgen, 2001), as follows:

$$\text{Relative expression}_{(\text{target gene, sample } x)} = 2^{\Delta\text{Ct}} (\text{Ct}_{\text{target gene, sample } x} - \text{Ct}_{\text{reference gene, sample } x})$$

PCR efficiency (E) was estimated for each primer pair by determining the slopes of standard curves obtained from serial dilution analysis of the cDNA control to ensure that E ranged from 90 to 110%. The nine primer pairs used for amplification and described in Teaniniuraitemoana et al. (2015) are listed in Table 1.

### Molecular Sexual Pathway Determination

To determine the molecular sexual pathway of oysters, we used the model proposed by Teaniniuraitemoana et al. (2015) based on the expression ratios of four genes: *pmarg-c43476/pmarg-fem1-like*, *pmarg-foxl2/pmarg-c54338*, and *pmarg-foxl2/pmarg-fem1-like*. According to this model, oysters are molecularly on the female pathway when they combine a *pmarg-c43476/pmarg-fem1-like* gene ratio  $\geq 0.02225$  and a *pmarg-foxl2/pmarg-c54338* gene ratio  $\geq 12.25$ ; or a *pmarg-c43476/pmarg-fem1-like* gene ratio  $\geq 0.02225$ , a *pmarg-foxl2/pmarg-c54338* gene ratio  $< 12.25$  and a *pmarg-foxl2/pmarg-fem1-like* gene ratio  $\geq 0.1003$ . Oysters are on the male pathway when they present a *pmarg-c43476/pmarg-fem1-like* gene ratio  $< 0.02225$  or a combining *pmarg-c43476/pmarg-fem1-like* gene ratio  $\geq 0.02225$ , a *pmarg-foxl2/pmarg-c54338* gene ratio  $< 12.25$  and a *pmarg-foxl2/pmarg-fem1-like* gene ratio  $< 0.1003$ .

### Statistical Analysis

Gametogenesis, sex ratio, and sexual pathway were analyzed using Fischer's exact test in XLStat software. The mean of relative gene expressions were compared using the non-parametric Kruskal–Wallis test, and pair wise multiple comparisons were carried out according to the procedure of Wilcoxon using Bonferroni correction in R software (R Development Core Team, 2011). All these statistical analyses were conducted with the threshold of significance  $\alpha = 0.05$ .

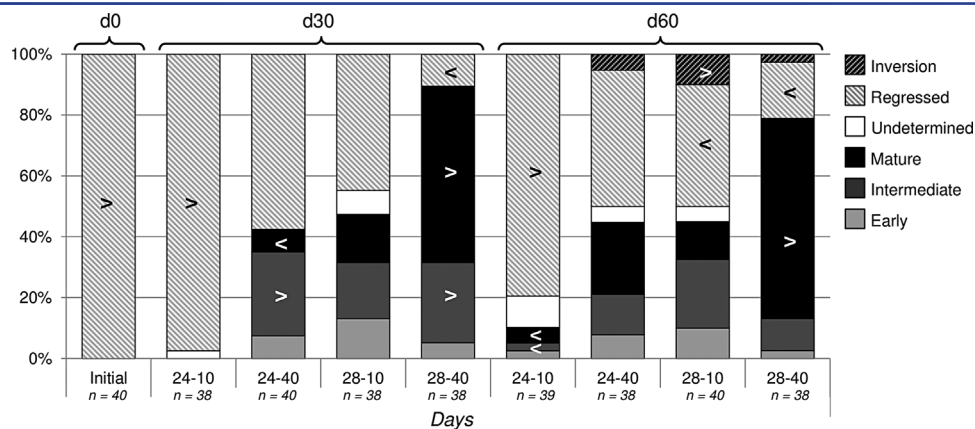
## RESULTS

### Effects of Temperature and Trophic Level on Gametogenesis and Sex Ratio

Significant differences in the proportion of reproductive stages were revealed between the different treatments (Fisher's exact test;  $P$ -value  $< 0.05$ ) in the two experiments (Figs. 1 and 2). At d0 of experimentation (initial state), there was a significantly higher proportion of regressed gonads, than that expected, with 100% and 80% in Exp1 and Exp2, respectively, probably caused by the initial under-feeding.

Table 1. Primers used for real time PCR.

Gene names	Genbank accession numbers	Primer names	Forward vs reverse	Sequences (5'-3')
<i>pmarg-foxl2</i>	KJ907378	FOXL2_1S	F	TCCGGATCACAGTGTCTCAG
		FOXL2_1AS	R	GACAGCAACGCACAGAATGT
<i>pmarg-c43476</i>	KM874285	C43476_VF_1S	F	ACCCTTACCAATCACCTGC
		C46476_VF_1AS	R	TAACCAGGCCCGGGACTAT
<i>pmarg-c45042</i>	KM874286	C45042_VF_2S	F	GAGTGGGAAGCAAGACAGACCA
		C45042_VF_2AS	R	TCCCAGAGGTTGCCAGAATAC
<i>pmarg-c19309</i>	KM874287	C19309_NFMRF_2S	F	GATGCACTAGACACGCCTGA
		C19309_NFMRF_2AS	R	ACATGGATCTCTGTAAACGCGT
<i>pmarg-c54338</i>	KM874288	C54338_NFMRF_1S	F	CGTCTTCTCTAATTCACG
		C54338_NFMRF_1AS	R	CAGTACACACCATGATTGA
<i>pmarg-vit6</i>	KM874283	Vit-6_2S	F	GTCCGCCAGTAAACAAAGA
		Vit-6_2AS	R	CAATGTTGGTCCAGCTTCT
<i>pmarg-zglp1</i>	KM874284	ZGLP1_4S	F	AGGCTTCTTTGTCAGACCACA
		ZGLP1_4AS	R	GTGCTGAGAGATGTGATCCCA
<i>pmarg-dmrt</i>	KJ907374	Dmrt_2S	F	AACCTCTGGGTGACAACCTGG
		Dmrt_2AS	R	ATCCAGGACCACAGGTTTCAG
<i>pmarg-fem1-like</i>	KJ907377	FEM-1_4S	F	ACTCCACAACCAGCTTTCACA
		FEM-1_4AS	R	GTGCCGATGTGACACTGAGA
<i>ef1a</i>	—	EF1a5_S	F	CCACGAGTCTTACCAGAGG
		EF1a5_AS	R	TGGATCACTTTTGCTGTCTCC
<i>gapdh1</i>	—	GAPDH1_S	F	AGGCTTGATGACCACTGTCC
		GAPDH1_AS	R	AGCCATCCCCTCAACTTC



**Figure 1.** Frequency of maturity stages observed by histology in the environmental experiment (Exp1). Number of animals (n) sampled at each sampling time and each treatment are indicated below each histogram. The corresponding sampling times are indicated above histograms with horizontal brackets. > indicates a significant higher number and < a significant lower number between conditions than predicted ( $P < 0.05$ , Fisher's exact test). 24-10: 24°C-10,000 cells  $\text{mL}^{-1}$ ; 24-40: 24°C-40,000 cells  $\text{mL}^{-1}$ ; 28-10: 28°C-10,000 cells  $\text{mL}^{-1}$ ; 28-40: 28°C-40,000 cells  $\text{mL}^{-1}$ ; d0: the beginning of the experiment; d30: after 30 days of conditioning; and d60: after 60 days of conditioning, the end of the experiment.

In the experiment testing environmental factors (Exp1, Fig. 1), after 60 days of conditioning, a significantly lower proportion (5%) of mature gonads was obtained than expected for pearl oysters conditioned at 24°C and 10,000 cells mL<sup>-1</sup>. For pearl oysters conditioned at 28°C and 40,000 cells mL<sup>-1</sup>, a significantly higher proportion (65.7%) of mature gonads was obtained than expected. In this latter treatment, a higher proportion of mature pearl oyster than the expected distribution was also found after only 30 days of conditioning. Regressed gonads were observed in all temperature and trophic level combinations. Significantly higher proportions of regressed gonads were found in the treatment combining 24°C and 10,000 cells mL<sup>-1</sup> after both 30 and 60 days of conditioning. Pearl oysters in the regressed stage were also found in the treatment 28°C-40,000 cells mL<sup>-1</sup>, but in significantly lower numbers than the expected distribution.

In addition, Fisher's exact test revealed significant differences in the proportion of females and animals in inversion ( $P$ -value <0.001; Table 2). Conversely, the proportion of males did not change significantly. At d30, changes in the sex ratio were found only at low trophic level. In the 28°C-10,000 cells mL<sup>-1</sup> treatment, three individuals became sexually undifferentiated, plus one female animal died. At d60, significant effects of environmental factors on the sex ratio were observed. At low trophic level and 28°C, a significant proportion of females (50%) was undergoing inversion to become male. In pearl oysters fed with a concentration of 40,000 cells mL<sup>-1</sup>, a significantly smaller proportion of inversion was observed. At 24°C, two "female to male" inversions were observed whereas only one was seen at 28°C.

#### Effects of Estradiol Injection on Sex Ratio and Gametogenesis

In the hormonal experiment (Exp2, Fig. 2), after 28 days, there were significantly higher proportions of regressed and undifferentiated gonads for pearl oysters injected with 17β-estradiol. These two stages were not found at all after 56 days in this treatment, where the mature stage then appeared significantly dominant (51%) as in the control treatment (60%). Some pearl oysters in regression were also found in the control group at the end of the experiment (2%) but in significantly lower proportions than in the expected distribution.

The effect of 17β-estradiol injection was only tested in males in order to evaluate whether induction of male to female sex-reversal was possible in *P. margaritifera*. Fisher's exact test ( $P$ -value <0.05) revealed significant differences in the proportion of male pearl oysters compared with the expected distribution (Table 2). Indeed, for pearl oysters injected with 17β-estradiol and sampled at d28, there was a significant lower proportion (82%) of males, whereas the proportion of undetermined individuals appeared significantly higher (18%) than expected.

#### Gene Expression Analysis Reveals Male Pearl Oysters at the Onset of Female Differentiation

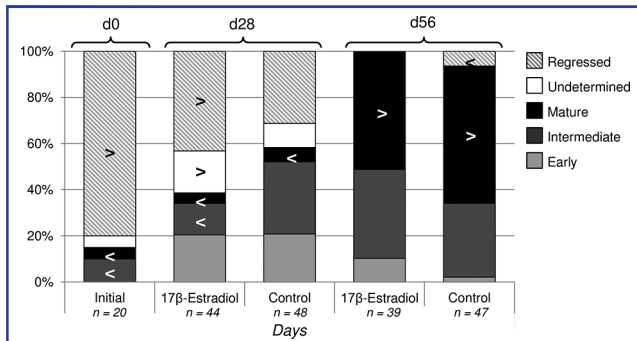
Gene expression analysis of nine candidate marker genes (*pmarg-foxl2*, *pmarg-c43476*, *pmarg-c45042*, *pmarg-c19309*, *pmarg-c54338*, *pmarg-vit6*, *pmarg-zglp1*, *pmarg-dmrt*, and *pmarg-fem1-like*) was performed on regressing male and undetermined samples after 60 days of conditioning in Exp1 and after 28 days in Exp2. Statistical tests carried out on mRNA

**Table 2.** Number of male, female, as well as undetermined and inversion stages of *Pinctada margaritifera* in each condition of the two experiments.

Time	Condition	Male	Female	Undetermined	Inversion
Experiment 1 (Exp1)					
d0	—	32	8	0 <sup>a</sup>	0 <sup>a</sup>
d30	24°C–10,000 cells mL <sup>-1</sup>	31	7	1	0 <sup>a</sup>
	24°C–40,000 cells mL <sup>-1</sup>	32	8	0 <sup>a</sup>	0 <sup>a</sup>
	28°C–10,000 cells mL <sup>-1</sup>	29	6	3	0 <sup>a</sup>
	28°C–40,000 cells mL <sup>-1</sup>	30	8	0 <sup>a</sup>	0 <sup>a</sup>
d60	24°C–10,000 cells mL <sup>-1</sup>	30	5	4	0 <sup>a</sup>
	24°C–40,000 cells mL <sup>-1</sup>	28	6	2	2
	28°C–10,000 cells mL <sup>-1</sup>	32	2 <sup>a</sup>	2	4 <sup>b</sup>
	28°C–40,000 cells mL <sup>-1</sup>	30	7	0 <sup>a</sup>	1
Experiment 2 (Exp2)					
d0	—	19	0	1	0
d28	17β-Estradiol	36 <sup>a</sup>	0	8 <sup>b</sup>	0
	Control	43	0	5	0
d56	17β-Estradiol	39	0	0 <sup>a</sup>	0
	Control	47 <sup>b</sup>	0	0 <sup>a</sup>	0

<sup>a</sup>A significant lower number between conditions ( $P$  < 0.05, Fisher exact test).

<sup>b</sup>A significant higher number.



**Figure 2.** Frequency of maturity stages observed by histology in the hormonal experiment (Exp2). Number of animals (n) sampled at each sampling time and each treatment are indicated below each histogram. The corresponding sampling times are indicated above histograms with horizontal brackets. > indicates a significant higher number and < a significant lower number between conditions than expected ( $P < 0.05$ , Fisher's exact test). 17β-Estradiol: oysters injected with a 0.5 μg μL<sup>-1</sup> 17β-estradiol solution; Control: oysters injected with a 1:100 mixture of ethanol and sterilized seawater (Control solution); d0: the beginning of the experiment; d28: after 28 days of experiment, 2 weeks after the final injection; and d56: after 56 days of experiment, 6 weeks after the final injection, the end of the experiment.

levels did not show significant effects of environmental factors (Kruskal-Wallis) or 17β-estradiol injection (Wilcoxon) on gene expression.

However, the use of the 3-gene-pair expression ratio model of the sexual pathway of *P. margaritifera*, proposed in Teaniniuraitemoana et al. (2015), on the present gene expression dataset revealed that nine male pearl oysters exhibited a female sexual

molecular pathway (i.e., combining a *pmarg-c43476/pmarg-fem1-like* gene ratio  $\geq 0.02225$  and a *pmarg-foxl2/pmarg-c54338* gene ratio  $\geq 12.25$ ; or combining a *pmarg-c43476/pmarg-fem1-like* gene ratio  $\geq 0.02225$ , a *pmarg-foxl2/pmarg-c54338* gene ratio  $< 12.25$ , and a *pmarg-foxl2/pmarg-fem1-like* gene ratio  $\geq 0.1003$ ) (Table 3). One of these specimens was found in the treatment 28°C-10,000 cells mL<sup>-1</sup> and another in 28°C-40,000 cells mL<sup>-1</sup> and three were found in the treatment 24°C-10,000 cells mL<sup>-1</sup> in Exp1. In Exp2, we found two individuals among the oysters injected with 17β-estradiol and two others in the control condition. Regarding their proportions, the Fisher's exact test revealed significant differences in Exp1 but not in Exp2. Indeed, the proportion of oysters on the female and male pathways was significantly lower in treatments 24°C-40,000 cells mL<sup>-1</sup> and 28°C-40,000 cells mL<sup>-1</sup>, respectively, than the expected proportions ( $P$ -value  $< 0.05$ ; Fisher's exact test).

Comparing gene expression between individuals determined molecularly to be on female and male sexual pathways; Wilcoxon test revealed significant differences for *pmarg-foxl2* and *pmarg-fem1-like* mRNA levels but not for the seven other genes tested (Fig. 3). Indeed, the mRNA level of *pmarg-foxl2* appeared significantly higher ( $4.6E-05 \pm 9.7E-05$ ;  $P$ -value  $< 0.05$ ) in oysters on the female sexual pathway than in those on the male sexual pathway, whereas *pmarg-fem1-like* appeared significantly lower ( $1E-03 \pm 4.4E-03$ ;  $P$ -value  $< 0.01$ ).

**DISCUSSION**

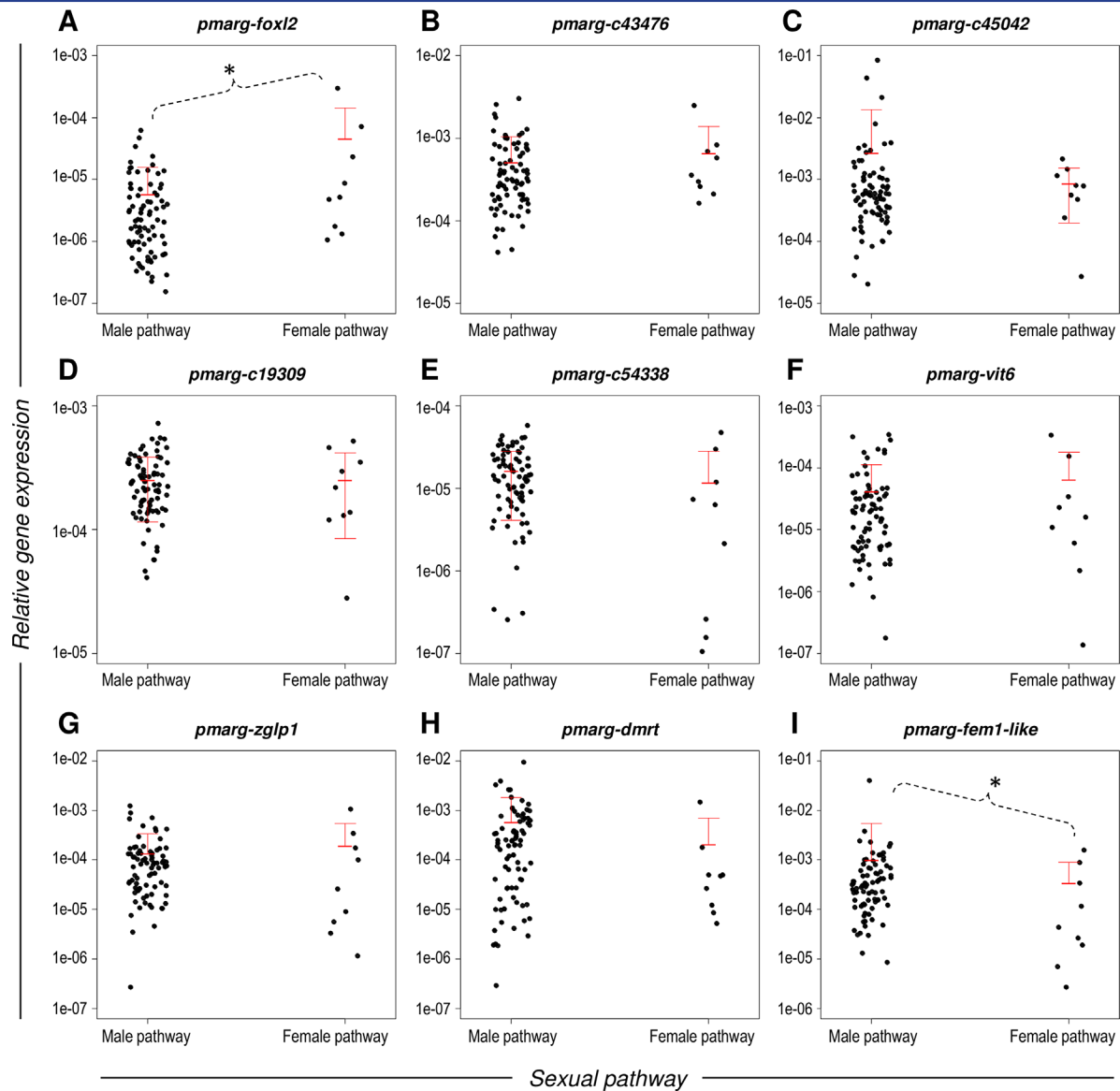
In this study, we report the effect of different combination of temperature, food quantity, and 17β-estradiol on gender determination and dynamics of gametogenesis in adult *P. margaritifera*. For this purpose, we conducted two separated experiments. In the first experiment, oysters were reared in controlled conditions of light, temperature, and food availability.

**Table 3.** Number of pearl oysters *Pinctada margaritifera* determined in male or female sexual pathway using the predictive 3-gene-pair expression ratio model of the sexual pathway proposed in Teaniniuraitemoana et al. (2015).

Condition	Female pathway	Male pathway	Total
<b>Experiment 1 (Exp1)</b>			
24°C-10,000 cells mL <sup>-1</sup>	3	24	27
24°C-40,000 cells mL <sup>-1</sup>	0 <sup>a</sup>	13	13
28°C-10,000 cells mL <sup>-1</sup>	1	12	13
28°C-40,000 cells mL <sup>-1</sup>	1	1 <sup>a</sup>	2
Subtotal	5	50	55
<b>Experiment 2 (Exp2)</b>			
17β-Estradiol	2	20	22
Control	2	11	13
Subtotal	4	31	35
<b>Total</b>	<b>9</b>	<b>81</b>	<b>90</b>

<sup>a</sup>A significant lower number between conditions ( $P < 0.05$ , Fisher exact test).





**Figure 3.** Relative expression profiles (real time PCR) of *pmarg-foxl2* (A), *pmarg-c43476* (B), *pmarg-c45042* (C), *pmarg-c19309* (D), *pmarg-c54338* (E), *vit-6* (F), *zglp1* (G), *pmarg-dmrt* (H), and *pmarg-fem1-like* (I) in pearl oysters on male and female sexual pathways. \* indicates statistically significant differences determined by a Wilcoxon test ( $P < 0.05$ ).

In the second experiment, oysters were injected three times at weekly intervals with  $17\beta$ -estradiol and reared in natural conditions into the lagoon.

#### Effect of Food Availability and Temperature

*Effect on Gender Determination.* The main objective of our environmental experiment was to test the hypothesis of environmental sex determinism (ESD) in *P. margaritifera* adults.

Numerous vertebrates exhibit this sex determinism mode, mainly consisting in “temperature-dependent sex determination”

(TSD) (Pieau et al., '99). For instance, among reptiles, gonadic differentiation is known to be biased towards female at high temperature in most turtle species (Shoemaker and Crews, 2009), but biased towards male in some lizards (Hulin et al., 2009). In marine bivalves, only a few studies have shown the effect of environmental factors on sex ratio as a manner of induction of a male-biased sex ratio (Fabioux et al., 2005; Stenyakina et al., 2010; Santerre et al., 2013). Our results show a significant sex ratio change, determined histologically, for oysters conditioned at high temperature and low trophic level. Indeed in these

environmental conditions, 50% of the initial females changed sex after 60 days, probably due to an energetic deficit. However, when looking at the molecular level using the three-gene-pair expression ratio model, the proportion of regressed males identified as being on the male sexual pathway was significantly lower than expected in the treatment combining higher temperature conditions (28°C) with high trophic level (40,000 cells mL<sup>-1</sup>). It is therefore highly likely that we could induce a sex-reversal from male to female using such conditions. Most previous studies that revealed a change in sex ratio in adult bivalves were conducted with a long conditioning time, generally over 1 year, as in the Pacific oyster *C. gigas* (more males at approximately 8°C) (Fabioux et al., 2005) or as in the tropical Cortez oyster *C. corteziensis* (more females at 9°C) (Rodríguez-Jaramillo et al., 2008). Our experiment lasted only 2 months, which corresponds to two reproductive cycles in *P. margaritifera*, but this duration could be insufficient to observe a significant effect of an environmental factor, especially temperature, on sex ratio.

The energetic deficit, hypothesized above, as source of sex inversion of 50% of the females, could be explained by the temperature fixed at 28°C that would have increased the oxygen consumption and the metabolic rates, increasing the need for energy, as already demonstrated from 24 to 27°C (Chávez-Villalba et al., 2013). Furthermore, in some molluscs, the production of female gametes is supposed to be more energetically costly than the production of male gametes, estimated at 50% more energy (Russell-Hunter, '79). To achieve sex inversion, pearl oysters should initiate gametogenesis to renew a reproductive cycle. Bayne, ('76) indicated that gametogenesis only begins when energetic reserves are sufficient. Poorly fed pearl oysters probably do not have enough energy from the diet and reserves at 28°C to initiate gametogenesis and therefore change sex. At 28°C and a high trophic level considered as a sufficient input of energy, we found only one female in the course of sexual inversion, suggesting that there are other forcing factors. A recent study on *P. margaritifera*, has shown that at equal ingestion, females assimilate organic matter of ingested food better than males, and thus require a higher oxygen consumption (Chávez-Villalba et al., 2013). This suggests that when females are subjected to a stress, an increase of their oxygen consumption could exacerbate the energetic deficit. Rearing techniques may be partially responsible and considered as stressful. We could hypothesize that the weekly cleaning generated a detrimental chronic stress for maintaining the female sex or/and the manifestation of new females. Some previous work has shown that the proportion of females has decreased for cultured pearl oysters compared with the natural stocks (Thielley, '93). In addition, Lacoste et al. (2014) observed a negative effect of monthly cleaning on female sex on farmed pearl oysters reared in a lagoon. It therefore appeared important to find non-stressful cleaning methods in order to consider only the effect of the

environmental factors and promote females in aquaculture rearing. Energetic cost of sex inversion would be also of great interest for further studies to understand and to model sex determinism in *P. margaritifera*.

*Effect on Gametogenesis.* Food availability is known to be an important factor for bivalve development, affecting broodstock energy reserves, fecundity, quality and quantity of eggs, and larval development (Berntsson et al., '97; Utting and Millican, '97; Hendriks et al., 2003; Delgado and Pérez-Camacho, 2005). In *P. margaritifera*, the present study clearly demonstrates, in experimental conditions, that the trophic level is a key parameter in the control of gametogenesis. Low trophic level seemed detrimental to the production of gametes, resulting in a high proportion of oysters in regression and therefore the cessation of gonial cell production. Conversely, a high concentration of microalgae promoted gonial cell proliferation and gamete maturation. These results confirm those of a study carried out by Le Moullac et al. (2013) showing that gonadic maturation and gonial proliferation of the pearl oyster is controlled by microalgal concentration. In this previous study, only 11% of individuals showed complete gametogenesis at the end of the first month of conditioning, whereas in our study, under the effect of a higher trophic level (x 2.5), the proportion of oysters with complete gametogenesis reached 60%. The role of temperature in gametogenesis has also been demonstrated in many species of bivalves. Indeed, it was shown that elevated temperatures in temperate zone (i.e., 19–20°C) promoted reproductive effort and maturation of germ cells (Fabioux et al., 2005; Martínez and Pérez, 2003). More precisely, it has been shown that the temperature regulates the speed and thus the duration of gametogenesis (Enríquez-Díaz et al., 2009). From a bioenergetic point of view, conditions were met in the present study to provide the maximum energy to oysters, i.e., a temperature of 28°C (Yukihira et al., 2000) and a trophic level close to saturation (Le Moullac et al., 2013). Under these conditions, pearl oysters realized complete gametogenesis, going to spawning for some male and female individuals (data not shown). This study therefore offers an avenue for conditioning pearl oysters for reproductive maturation, but further research will be required to test for an effect of food quantity and quality on gamete quality and on the subsequent implications for offspring.

#### Effect of 17 $\beta$ -Estradiol

The role of estrogens in the hormonal regulation of bivalve reproduction was suggested to be similar to that which they fulfill in vertebrate endocrine systems. Many studies in vertebrates, especially teleosts, showed that 17 $\beta$ -estradiol has a significant effect on reproduction, stimulating ovarian development and vitellogenin synthesis (De Vlaming et al., '80; Chang et al., '95; Kang et al., 2002). In this context, we made the first test of the potential feminizing effect of 17 $\beta$ -estradiol by directly injecting

it into male gonads of *P. margaritifera*. While no sex reversal from male to female was established during this experiment, a significantly lower proportion of male and a significantly higher proportion of undetermined oysters were found in the 17 $\beta$ -estradiol-injected group after 28 days (i.e., 14 days after the third injection). Furthermore, regarding gametogenesis, we also found significantly lower proportions of intermediate and mature gonads. These results strongly suggested that 17 $\beta$ -estradiol has a negative effect on male gonad development in *P. margaritifera*, as in fishes. For example, Chang et al. ('95) observed that E<sub>2</sub> treatment completely suppressed testicular development and spermiation in 2-years-old black porgy *Acanthopagrus schlegelii*. However, in *P. margaritifera*, it seemed that this negative effect disappears 6 weeks after the last injection, giving way to a positive effect on spermatogenesis. Indeed, although at the end of the experiment, a significantly higher proportion of mature gonads was reported in 17 $\beta$ -estradiol-injected oysters than in the control group, we observed an increase of sperm motility under the microscope for mature oysters of the 17 $\beta$ -estradiol-injected group compared with the control group at this time (data not shown). These results may seem to be contradictory to previous reports indicating the feminizing effect of estradiol in bivalves (Mori et al., '69; Varaksina and Varaksin, '91), but these effects are in accordance with other reports showing that estradiol can stimulate male reproductive activities. Indeed, it has been reported in other marine bivalves that estradiol stimulates spermatogenesis (Varaksina et al., '92; Wang and Croll, 2004), potentiates sperm release and spawning (Wang and Croll, 2003, 2006). If we supposed that 17 $\beta$ -estradiol quantity decreased in the gonad over the experiment, we can suggest that a residual quantity of 17 $\beta$ -estradiol (at the end of the experiment) could have a positive effect on spermatogenesis, whereas a high dose leads to the regression of the male differentiation. Therefore, our results show an effect of 17 $\beta$ -estradiol in reproduction of *P. margaritifera*, but further studies are needed to elucidate its function and mechanism of action.

#### Probable Dominance of Genetic Sex Determinism in Adult *P. Margaritifera*

The application of the model of the sexual pathway of *P. margaritifera* to real-time PCR results revealed that nine regressed male pearl oysters, overall the experiments, were molecularly on the female sexual pathway (i.e., across all conditions whether in the environmental and hormonal experiments). These nine animals represent 10% of the total analyzed pearl oysters. This ratio is not different to the female ratio found in population of this average height (Chávez-Villalba et al., 2011), suggesting that whatever an environmental or hormonal treatment applied here, a previously established genetic control seems to be dominant. In the Pacific oyster *C. gigas*, two genetic models have been proposed for sex determination (Guo et al., '98; Hedrick and Hedgecock, 2010). Whatever the model, the authors

assumed that sex in *C. gigas* would be controlled by a single major gene. Herein, we showed that among the nine marker genes only *pmarg-foxl2* and *pmarg-fem1-like* appeared significantly differently expressed between pearl oysters in male and female sexual pathways, indicating that these two genes are involved at the top of the molecular cascades of sex determination in *P. margaritifera*. More recently, Santerre et al. (2013) suggested that *C. gigas* exhibits a mixed sex determination (GSD + TSD), as can be observed for many fishes and amphibians (Valenzuela et al., 2003). In *P. margaritifera*, we did not exclude a mixed sex determination mode, GSD with ESD, but it appeared that adult sex determinism in this species is governed by more complex mechanisms. Indeed, this study covered only the effect of the exogenous factors temperature and food availability and the endogenous factor estradiol in adult pearl oysters. More studies will be required to better understand sex determination in this species, such as spat sex determination as recently studied in *C. gigas* (Santerre et al., 2013), an alternative hermaphrodite mollusc, or with regard to population density as in *Crepidula fornicata*, a sequential hermaphrodite mollusc (Proestou, 2005).

Furthermore, this study also confirmed the utility and the capacity of the previously determined model based on the expression of three gene pairs to identify oysters at the onset of the female pathway.

#### CONCLUSIONS

In the present study, we found evidence for the environmental and, for the first time, hormonal control of the reproduction of *P. margaritifera*. Although no sex-reversal from male to female was observed, we suggest that environmental factors, and especially temperature combining with a predominant genetic control mechanism, are involved in the gender determination of adult pearl oysters. Furthermore, high temperature and high trophic level appeared the best combination for broodstock conditioning in future breeding programs aimed at the sustainable development of pearl farming in French Polynesia. However, the sex determinism of *P. margaritifera* remains to be explored, with the two candidate genes *pmarg-foxl2* and *pmarg-fem1-like* as the best starting points. Herein we covered adult sex determinism and it would be of great interest to study sex determinism in spat during first gonadic differentiation, like Santerre et al. (2013) in the Pacific oyster *C. gigas*.

#### ACKNOWLEDGMENTS

The authors are indebted to M. Sham Koua, M. Maihota, N. L. Tetaura, C. Soyey, H. Aurentz, and A. Cizeron for their helpful assistance. We thank H. McCombie for her help in editing the English language.

#### LITERATURE CITED

Bayne BL. 1976. Aspects of reproduction in bivalve molluscs. *Estuar Process* 1:432–448.

- Bayne BL, Newell RC. 1983. Physiological energetics of marine molluscs. In: Saleuddin ASM, Wilbur KM, editors. *The Mollusca* vol 4. London: Academic Press. p 407–515.
- Berntsson KM, Jonsson PR, Wångberg SA, Carlsson AS. 1997. Effects of broodstock diets on fatty acid composition, survival, and growth rates in larvae of the European flat oyster, *Ostrea edulis*. *Aquaculture* 154:139–153.
- Chang CF, Lau EL, Lin BY. 1995. Estradiol-17 $\beta$  suppresses testicular development and stimulates sex reversal in protandrous black porgy, *Acanthopagrus schlegelii*. *Fish Physiol Biochem* 14:481–488.
- Chávez-Villalba J, Soyez C, Huvet A, et al. 2011. Determination of gender in the pearl oyster *Pinctada margaritifera*. *J Shellfish Res* 30:231–240.
- Chávez-Villalba J, Soyez C, Aurentz H, Le Moullac G. 2013. Physiological responses of female and male black-lip pearl oysters (*Pinctada margaritifera*) to different temperatures and concentrations of food. *Aquat Living Resour* 26:263–271.
- Delgado M, Pérez-Camacho A. 2005. Histological study of the gonadal development of *Ruditapes decussatus* (L.) (Mollusca: Bivalvia) and its relationship with available food. *Sci Mar* 69:87–97.
- De Vlaming VL, Wiley HS, Delahunty G, Wallace RA. 1980. Goldfish (*Carassius auratus*) vitellogenin: induction, properties, and relationship to yolk proteins. *Comp Biochem Physiol Part B* 67:613–623.
- Enríquez-Díaz M, Pouvreau S, Chávez-Villalba J, Le Pennec M. 2009. Gametogenesis, reproductive investment, and spawning behavior of the Pacific giant oyster *Crassostrea gigas*: evidence of an environment-dependent strategy. *Aquac Int* 17:491–506.
- Fabioux C, Huvet A, Le Souchu P, Le Pennec M, Pouvreau S. 2005. Temperature and photoperiod drive *Crassostrea gigas* reproductive internal clock. *Aquaculture* 250:458–470.
- Fournier J, Levesque E, Pouvreau S, Le Pennec M, Le Moullac G. 2012. Influence of plankton concentration on gametogenesis and spawning of the black lip pearl oyster *Pinctada margaritifera* in Ahe atoll lagoon (Tuamotu Archipelago, French polynesia). *Mar Pollut Bull* 65:463–470.
- Gauthier-Clerc S, Pellerin J, Amiard JC. 2006. Estradiol-17 $\beta$  and testosterone concentrations in male and female *Mya arenaria* (Mollusca bivalvia) during the reproductive cycle. *Gen Comp Endocrinol* 145:133–139.
- Gervis MH, Sims NA. 1992. The biology and culture of pearl oysters (Bivalvia: Pteriidae). *ICLARM Stud Rev* 21:1–49.
- Gueguen Y, Montagnani C, Joubert C, et al. 2013. Characterization of molecular processes involved in the pearl formation in *Pinctada margaritifera* for the sustainable development of pearl farming industry in French Polynesia. In: Watabe S, Maeyama K, Nagasawa H, editors. *Recent advances in pearl research*. Tokyo: TERRAPUB. p 183–193.
- Guo X, Hedgecock D, Hershberger WK, Cooper K, Allen K. 1998. Genetic determinants of protandric sex in the Pacific oyster, *Crassostrea gigas* Thunberg. *Evolution* 52:394–402.
- Hedrick PW, Hedgecock D. 2010. Sex determination: genetic models for oysters. *J Hered* 101:602–611.
- Hendriks IE, Van Duren LA, Herman PM. 2003. Effect of dietary polyunsaturated fatty acids on reproductive output and larval growth of bivalves. *J Exp Mar Bio Ecol* 296:199–213.
- Hulin V, Delmas V, Girondot M, Godfrey MH, Guillon JM. 2009. Temperature-dependent sex determination and global change: are some species at greater risk? *Oecologia* 160:493–506.
- Kang IJ, Yokota H, Oshima Y, et al. 2002. Effect of 17 $\beta$ -estradiol on the reproduction of Japanese medaka (*Oryzias latipes*). *Chemosphere* 47:71–80.
- Ketata I, Guerrazi F, Rebai T, Hamza-Chaffai A. 2007. Variation of steroid concentrations during the reproductive cycle of the clam *Ruditapes decussatus*: a one year study in the gulf of Gabès area. *Comp Biochem Physiol A Mol Integr Physiol* 147:424–431.
- Ky CL, Blay C, Sham-Koua M, et al. 2013. Family effect on cultured pearl quality in black-lipped pearl oyster *Pinctada margaritifera* and insights for genetic improvement. *Aquat Living Resour* 26:133–145.
- Ky CL, Blay C, Sham-Koua M, Lo C, Cabral P. 2014. Indirect improvement of pearl grade and shape in farmed *Pinctada margaritifera* by donor “oyster” selection for green pearls. *Aquaculture* 432:154–162.
- Lacoste E, Le Moullac G, Levy P, Gueguen Y, Gaertner-Mazouni N. 2014. Biofouling development and its effect on growth and reproduction of the farmed pearl oyster *Pinctada margaritifera*. *Aquaculture* 434:18–26.
- Le Moullac G, Tiapari J, Teissier H, Martinez E, Cochard JC. 2012. Growth and gonad development of the tropical black-lip pearl oyster, *Pinctada margaritifera* (L.), in the Gambier archipelago (French Polynesia). *Aquac Int* 20:305–315.
- Le Moullac G, Soyez C, Sham-Koua M, et al. 2013. Feeding the pearl oyster *Pinctada margaritifera* during reproductive conditioning. *Aquac Res* 44:404–411.
- Li Q, Osada M, Suzuki T, Mori K. 1998. Changes in vitellin during oogenesis and effect of estradiol-17 $\beta$  on vitellogenesis in the Pacific oyster *Crassostrea gigas*. *Invertebr Reprod Dev* 33:87–93.
- Livak KJ, Schmittgen TD. 2001. Analysis of relative gene expression data using real-time quantitative PCR and the 2 $^{-\Delta\Delta C(T)}$  Method. *Methods* 25:402–408.
- Martínez G, Pérez H. 2003. Effect of different temperature regimes on reproductive conditioning in the scallop *Argopecten purpuratus*. *Aquaculture* 228:153–167.
- Matsumoto T, Osada M, Osawa Y, Mori K. 1997. Gonadal estrogen profile and immunohistochemical localization of steroidogenic enzymes in the oyster and scallop during sexual maturation. *Comp Biochem Physiol Part B Biochem Mol Biol* 118:811–817.
- Mori K, Muramatsu T, Nakamura Y. 1969. Effect of steroid on oyster III: sex reversal from male to female in *Crassostrea gigas* by estradiol-17 $\beta$ . *Bull Japanese Soc Sci Fish* 35:1072–1076.
- Moss SM. 1989. Effects of exogenous androgens on growth, biochemical composition, and reproduction of the coot clam, *Mulinia lateralis*. *Pacific Sci* 43:200.
- Osada M, Takamura T, Sato H, Mori K. 2003. Vitellogenin synthesis in the ovary of scallop, *Patinopecten yessoensis*: control by estradiol-

- 17 beta and the central nervous system. *J Exp Zool A Comp Exp Biol* 299:172–179.
- Osada M, Tawarayama H, Mori K. 2004. Estrogen synthesis in relation to gonadal development of Japanese scallop, *Patinopecten yessoensis*: gonadal profile and immunolocalization of P450 aromatase and estrogen. *Comp Biochem Physiol B Biochem Mol Biol* 139:123–128.
- Penman DJ, Piferrer F. 2008. Fish gonadogenesis. Part I: genetic and environmental mechanisms of sex determination. *Rev Fish Sci* 16:16–34.
- Pieau C, Dorizzi M, Richard-Mercier N. 1999. Temperature-dependent sex determination and gonadal differentiation in reptiles. *Cell Mol Life Sci* 55:887–900.
- Piferrer F, Guiguen Y. 2008. Fish gonadogenesis. Part II: Molecular biology and genomics of sex differentiation. *Rev Fish Sci* 16:35–55.
- Pouvreau S, Gangnery A, Tiapari J, et al. 2000. Gametogenic cycle and reproductive effort of the tropical blacklip pearl oyster, *Pinctada margaritifera* (Bivalvia: Pteriidae), cultivated in Takapoto atoll (French Polynesia). *Aquat Living Resour* 13:37–48.
- Pradeep PJ, Sriyaya TC, Papini A, Chatterji AK. 2012. Effects of triploidy induction on growth and masculinization of red tilapia [*Oreochromis mossambicus* (Peters, 1852) × *Oreochromis niloticus* (Linnaeus, 1758)]. *Aquaculture* 6:181–187.
- Proestou DA. 2005. Sex change in *Crepidula fornicata*: influence of environmental factors on reproductive success and the timing of sex change.
- R Development Core Team R 2011. R: A Language and Environment for Statistical Computing. *R Found Stat Comput* 1:409.
- Rodríguez-Jaramillo C, Hurtado MA, Romero-Vivas E, et al. 2008. Gonadal development and histochemistry of the Tropical oyster, *Crassostrea corteziensis* (Hertlein, 1951) during an annual reproductive cycle. *J Shellfish Res* 27:1129–1141.
- Russell-Hunter WD. 1979. The evolution of filter-feeding bivalves. In: *A life of invertebrates*. New-York: MacMillan Publishing Company. p 656.
- Santerre C, Sourdain P, Marc N, et al. 2013. Oyster sex determination is influenced by temperature—first clues in spat during first gonadic differentiation and gametogenesis. *Comp Biochem Physiol A Mol Integr Physiol* 165:61–69.
- Sastry AN. 1979. Pelecypoda (excluding Ostreidae). In: Giese AC, Pearse JS, editors. *Reproduction of marine molluscs*. New York: Academic Press. p 113–292.
- Scott AP. 2012. Do mollusks use vertebrate sex steroids as reproductive hormones? Part I: critical appraisal of the evidence for the presence, biosynthesis and uptake of steroids. *Steroids* 77:1450–1468.
- Scott AP. 2013. Do mollusks use vertebrate sex steroids as reproductive hormones? II. Critical review of the evidence that steroids have biological effects. *Steroids* 78:268–281.
- Shoemaker CM, Crews D. 2009. Analyzing the coordinated gene network underlying temperature-dependent sex determination in reptiles. *Semin Cell Dev Biol* 20:293–303.
- Stenyakina A, Walters LJ, Hoffman EA, Calestani C. 2010. Sex expression and environmental-stress in a mollusk, *Pinctada margaritifera*. *Mol Reprod Dev* 77:222–230.
- Suquet M, De Kermoyan G, Araya RG, et al. 2009. Anesthesia in Pacific oyster, *Crassostrea gigas*. *Aquat Living Resour* 22:29–34.
- Tayalé A, Gueguen Y, Treguier C, et al. 2012. Evidence of donor effect on cultured pearl quality from a duplicated grafting experiment on *Pinctada margaritifera* using wild donors. *Aquat Living Resour* 25:269–280.
- Teaniniuraitemoana V, Huvet A, Levy P, et al. 2014. Gonad transcriptome analysis of pearl oyster *Pinctada margaritifera*: identification of potential sex differentiation and sex determining genes. *BMC Genomics* 15:491.
- Teaniniuraitemoana V, Huvet A, Levy P, et al. 2015. Molecular signatures discriminating the male and the female sexual pathways in the pearl oyster *Pinctada margaritifera*. *PLoS ONE* 10:e0122819.
- Thielley M. 1993. Etude cytologique de la gamétogénèse, de la sex-ratio et du cycle de reproduction chez l'huître perlière *Pinctada margaritifera* (L) var. *cumingii* (Jameson), (mollusque, bivalves). Comparaison avec le cycle de *Pinctada maculata* (Gould).
- Tranter D. 1958. Reproduction in australian pearl oysters (Lamelli-branchia). IV. *Pinctada margaritifera* (Linnaeus). *Mar Freshw Res* 9:509–525.
- Utting SD, Millican PF. 1997. Techniques for the hatchery conditioning of bivalve broodstocks and the subsequent effect on egg quality and larval viability. *Aquaculture* 155:45–54.
- Valenzuela N, Adams DC, Janzen FJ, et al. 2003. Pattern does not equal process: exactly when is sex environmentally determined? *Am Nat* 161:676–683.
- Varaksina GS, Varaksin AA. 1991. Effects of estradiol, progesterone, and testosterone on oogenesis of yezo scallop. *Biol Morya* 3:61–68.
- Varaksina GS, Varaksin AA, Maslennikova LA. 1992. The role of gonadal steroid hormones in the spermatogenesis of the scallop *Mizuhopecten yessoensis*. *Biol Morya* 3:77–83.
- Wang C, Croll RP. 2003. Effects of sex steroids on in vitro gamete release in the sea scallop, *Placopecten magellanicus*. *Invertebr Reprod Dev* 44:89–100.
- Wang C, Croll RP. 2004. Effects of sex steroids on gonadal development and gender determination in the sea scallop, *Placopecten magellanicus*. *Aquaculture* 238:483–498.
- Wang C, Croll RP. 2006. Effects of sex steroids on spawning in the sea scallop, *Placopecten magellanicus*. *Aquaculture* 256:423–432.
- Wedekind C, Stelkens RB. 2010. Tackling the diversity of sex determination. *Biol Lett* 6:7–9.
- Yukihira H, Lucas JS, Klumpp DW. 2000. Comparative effects of temperature on suspension feeding and energy budgets of the pearl oysters *Pinctada margaritifera* and *P. maxima*. *Mar Ecol Prog Ser* 195:179–188.
- Zanini JM, Salvat B. 2000. Assessment of deep water stocks of pearl oysters at Takapoto Atoll (Tuamotu Archipelago, French Polynesia). *Coral Reefs* 19:83–87.