



HAL
open science

Towards Big Data in Medical Imaging

Salima Benbernou, Mehdi Bentounsi, Pierre Bourdoncle, Mustapha Lebbah,
Mourad Ouziri, Soror Sahri

► **To cite this version:**

Salima Benbernou, Mehdi Bentounsi, Pierre Bourdoncle, Mustapha Lebbah, Mourad Ouziri, et al..
Towards Big Data in Medical Imaging. Symposium IDV - Imageries du Vivant, Jan 2016, Cap Hornu,
France. hal-01259590

HAL Id: hal-01259590

<https://hal.science/hal-01259590>

Submitted on 29 Jan 2016

HAL is a multi-disciplinary open access archive for the deposit and dissemination of scientific research documents, whether they are published or not. The documents may come from teaching and research institutions in France or abroad, or from public or private research centers.

L'archive ouverte pluridisciplinaire **HAL**, est destinée au dépôt et à la diffusion de documents scientifiques de niveau recherche, publiés ou non, émanant des établissements d'enseignement et de recherche français ou étrangers, des laboratoires publics ou privés.

Salima Benbernou¹, Mehdi Bentounsi^{1*}, Pierre Bourdoncle², Mustapha Lebbah³, Mourad Ouziri¹, and Soror Sahri¹

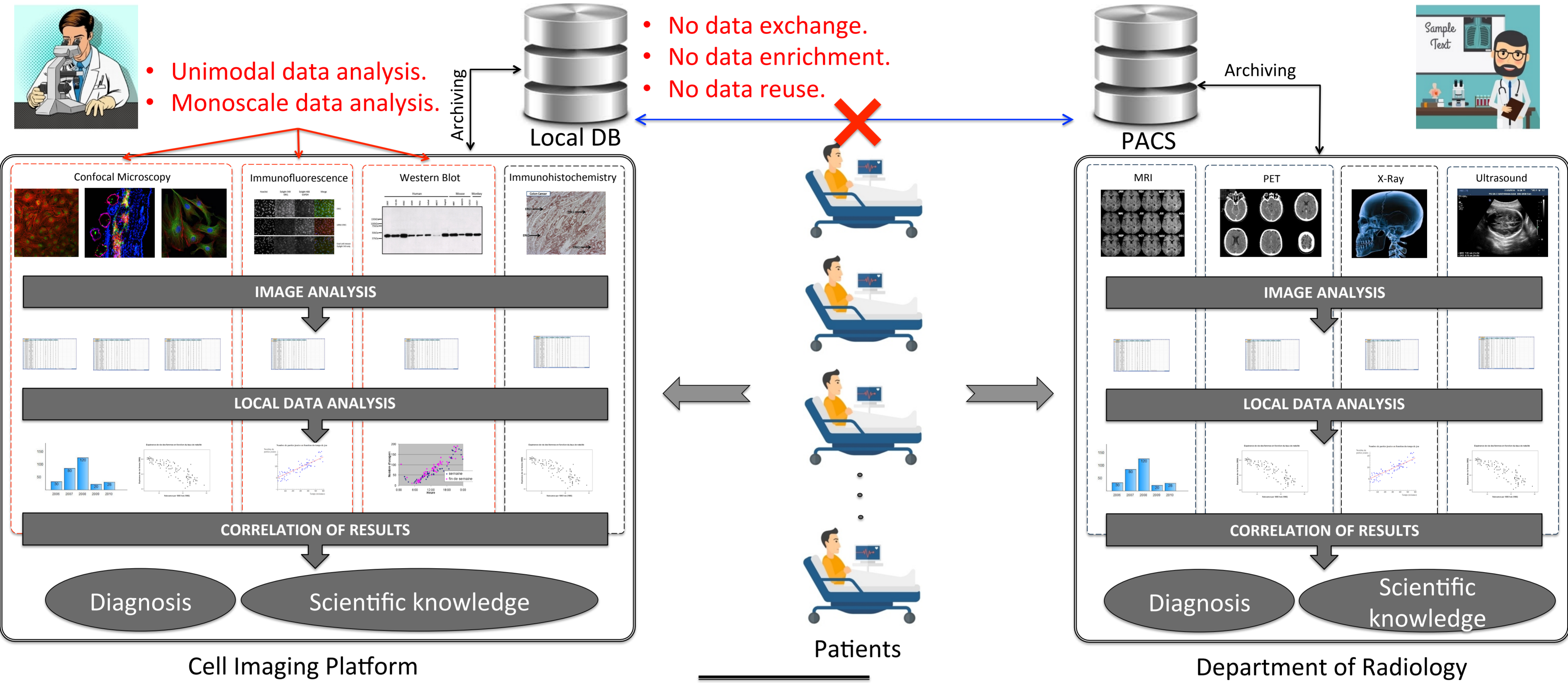
* mehdi.bentounsi@parisdescartes.fr

⁽¹⁾diNo research group, LIPADE, Université Paris Descartes, Sorbonne Paris Cité

⁽²⁾Plateforme Cochin-Imagerie, Institut Cochin

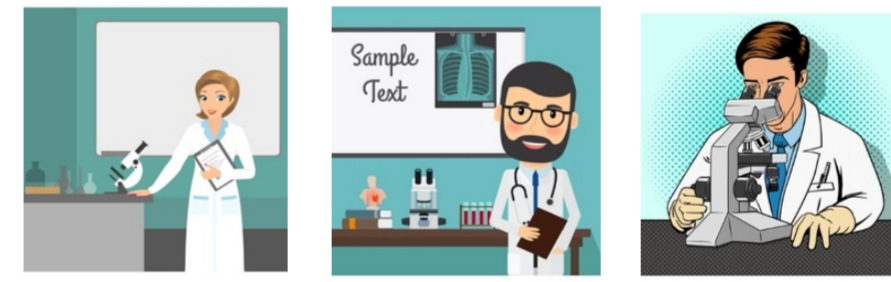
⁽³⁾LIPN, Université Paris 13, Sorbonne Paris Cité

Background



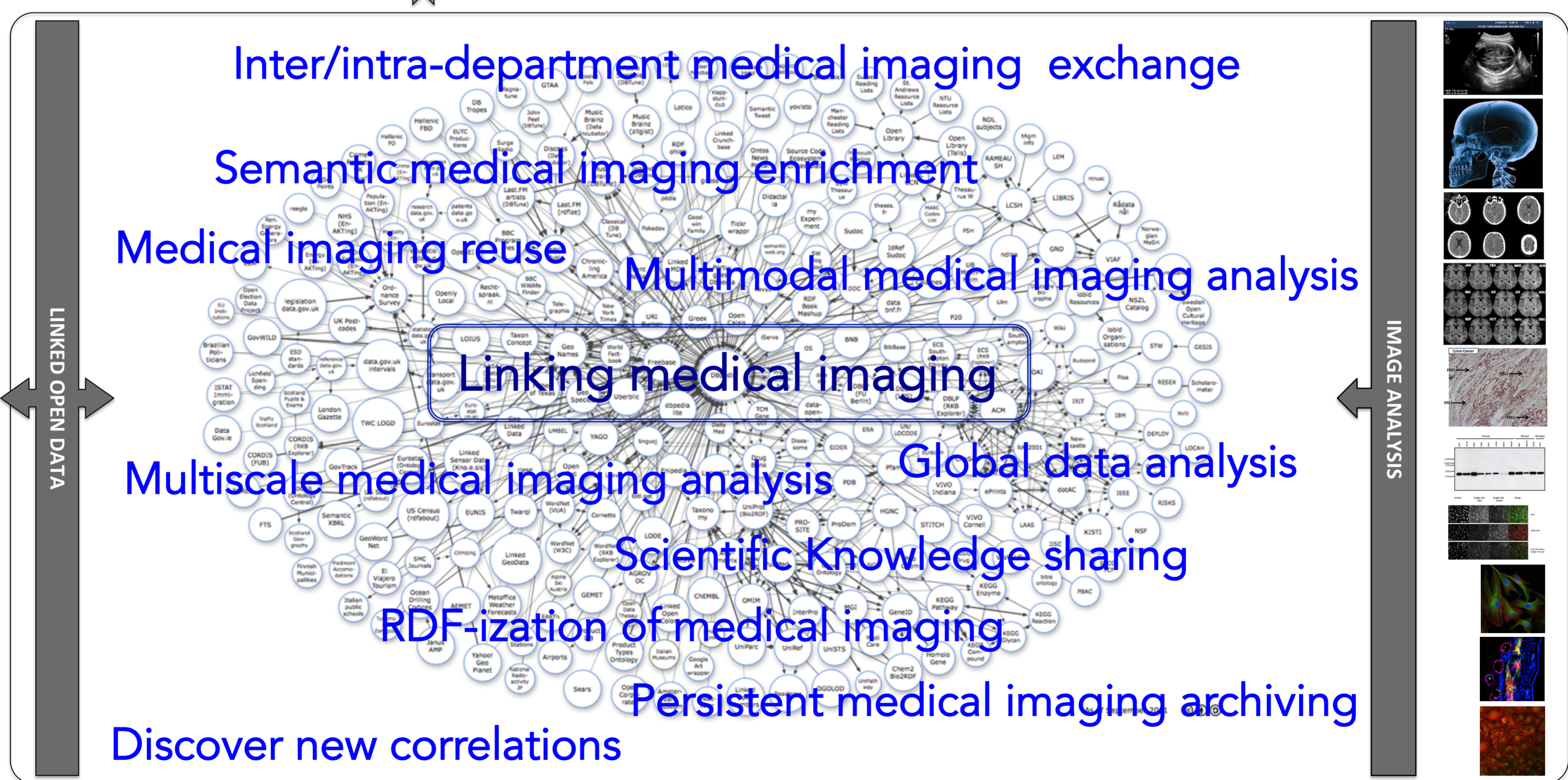
Objectives

Diagnosis improvement



Health professionals and scientists

Open Data



IDV Virtual Datacenter

MAGI 2

CUMULUS

S-CAPAD

SPC Cloud and HPC infrastructures : CIRRUS