



**HAL**  
open science

## Genetic characterization of *Trypanosoma cruzi* DTUs in wild *Triatoma infestans* from Bolivia: predominance of TcI

Simone Brenière, Claudia Aliaga, Etienne Waleckx, Rocio Buitrago, R. Salas, Christian Barnabé, Michel Tibayrenc, François Noireau

► **To cite this version:**

Simone Brenière, Claudia Aliaga, Etienne Waleckx, Rocio Buitrago, R. Salas, et al.. Genetic characterization of *Trypanosoma cruzi* DTUs in wild *Triatoma infestans* from Bolivia: predominance of TcI. PLoS Neglected Tropical Diseases, 2012, 6 (5), pp.e1650. 10.1371/journal.pntd.0001650 . hal-01256078

**HAL Id: hal-01256078**

**<https://hal.science/hal-01256078>**

Submitted on 14 Jan 2016

**HAL** is a multi-disciplinary open access archive for the deposit and dissemination of scientific research documents, whether they are published or not. The documents may come from teaching and research institutions in France or abroad, or from public or private research centers.

L'archive ouverte pluridisciplinaire **HAL**, est destinée au dépôt et à la diffusion de documents scientifiques de niveau recherche, publiés ou non, émanant des établissements d'enseignement et de recherche français ou étrangers, des laboratoires publics ou privés.

# Genetic Characterization of *Trypanosoma cruzi* DTUs in Wild *Triatoma infestans* from Bolivia: Predominance of TcI

Simone Frédérique Brenière<sup>1,2\*</sup>, Claudia Aliaga<sup>1,2</sup>, Etienne Waleckx<sup>1,2</sup>, Rosio Buitrago<sup>1,2</sup>, Renata Salas<sup>1,2</sup>, Christian Barnabé<sup>1,2</sup>, Michel Tibayrenc<sup>1</sup>, François Noireau<sup>1,3†</sup>

**1** MIVEGEC (Université de Montpellier 1 et 2, CNRS 5290, IRD 224), Maladies Infectieuses et Vecteurs: Ecologie, Génétique, Evolution et Contrôle, Institut de Recherche pour le développement (IRD), Representation in Bolivia, La Paz, Bolivia, **2** Instituto Nacional de Laboratorios de Salud (INLASA), Laboratorio de Entomología Médica, La Paz, Bolivia, **3** IIBISMED, Facultad de Medicina, Universidad Mayor de San Simón, Cochabamba, Bolivia

## Abstract

**Background:** The current persistence of *Triatoma infestans* (one of the main vectors of Chagas disease) in some domestic areas could be related to re-colonization by wild populations which are increasingly reported. However, the infection rate and the genetic characterization of the *Trypanosoma cruzi* strains infecting these populations are very limited.

**Methodology/Principal Findings:** Of 333 wild *Triatoma infestans* specimens collected from north to south of a Chagas disease endemic area in Bolivia, we characterized 234 stocks of *Trypanosoma cruzi* using mini-exon multiplex PCR (MMPCR) and sequencing the glucose phosphate isomerase (*Gpi*) gene. Of the six genetic lineages (“discrete typing units”; DTU) (TcI–VI) presently recognized in *T. cruzi*, TcI (99.1%) was overdominant on TcII (0.9%) in wild Andean *T. infestans*, which presented a 71.7% infection rate as evaluated by microscopy. In the lowlands (Bolivian Chaco), 17 “dark morph” *T. infestans* were analyzed. None of them were positive for parasites after microscopic examination, although one TcI stock and one TcII stock were identified using MMPCR and sequencing.

**Conclusions/Significance:** By exploring large-scale DTUs that infect the wild populations of *T. infestans*, this study opens the discussion on the origin of TcI and TcV DTUs that are predominant in domestic Bolivian cycles.

**Citation:** Brenière SF, Aliaga C, Waleckx E, Buitrago R, Salas R, et al. (2012) Genetic Characterization of *Trypanosoma cruzi* DTUs in Wild *Triatoma infestans* from Bolivia: Predominance of TcI. PLoS Negl Trop Dis 6(5): e1650. doi:10.1371/journal.pntd.0001650

**Editor:** Ricardo E. Gürtler, Universidad de Buenos Aires, Argentina

**Received:** July 6, 2011; **Accepted:** April 7, 2012; **Published:** May 29, 2012

**Copyright:** © 2012 Brenière et al. This is an open-access article distributed under the terms of the Creative Commons Attribution License, which permits unrestricted use, distribution, and reproduction in any medium, provided the original author and source are credited.

**Funding:** This work was funded by the National Agency for Research (ANR, France), the UNICEF/UNDP/World Bank/WHO Special Program for Research and Training in Tropical Diseases (TDR, no. A70596), the IDRC Canada grant no. 103696-012, and the IRD France. The funders had no role in study design, data collection and analysis, decision to publish, or preparation of the manuscript.

**Competing Interests:** The authors have declared that no competing interests exist.

\* E-mail: Frederique.Breniere@ird.fr

† Deceased.

## Introduction

*Trypanosoma cruzi*, the agent of Chagas disease, is a serious threat to health in the Americas, accounting for the highest disease burden in Latin American, with eight to nine million people infected and 25–90 million at risk [1–3]. This parasite, which belongs to the order Kinetoplastida, is mainly transmitted by blood-sucking bug vectors (Hemiptera, Reduviidae, Triatominae) but also by blood transfusion and oral transmission. Moreover, newborns can be infected through vertical transmission. There are currently 141 recognized species of triatomines, but only five of them, belonging to three genera (*Triatoma*, *Rhodnius*, and *Panstrongylus*) can be considered important vectors of Chagas disease [4]. With the exception of one species (*T. rubrofasciata*), all Triatominae have populations living in natural habitats in contact with wild mammals, birds, or reptiles [5–8]. *T. cruzi* is found in three overlapping ecosystems. One is related to the wild environment and involves wild populations of triatomines and mammals (sylvatic cycle); the second one depends on artificial structures

surrounding human dwellings where vector populations associated to domestic and synanthropic animals live (peridomestic cycle); the third one occurs in dwellings and involves triatomines living indoors, humans, and domestic animals (domestic cycle).

Population genetics analyses have shown that *T. cruzi* has a predominantly clonal mode of evolution and exhibits considerable phenotypic and genetic diversity [9]. This population genetics model refers to genetic clonality, i.e., limited or absent genetic recombination with persistence of durable multilocus associations, whatever the cytological mechanism of reproduction [10]. Six distinct genetic lineages or discrete typing units (DTUs) [11] have been described [12,13]. They have recently been validated by a committee of experts and labeled TcI to TcVI [14]. TcI is ubiquitous and prevalent in different sylvatic cycles. However, it is responsible for the large majority of human infections in the Amazon basin and more northern countries as well as part of the infections in South Cone countries of South America. It exhibits considerable genetic diversity [9,15,16] with possible subclustering [17,18]. TcII, V, and VI are mainly associated with domestic

## Author Summary

Chagas disease is a neglected parasitic disease transmitted by bugs (vectors) and represents a serious health problem in the Americas. Although the transmission generally occurs in the houses where the bugs are living, wild populations of vectors are now considered a problem because these populations might enter the houses and recolonize them after eliminating of house populations by insecticide spraying. This is the case of the Southern countries where *Triatoma infestans*, the principal vector, transmits *Trypanosoma cruzi* the agent of the disease. This parasite presents a large genetic variability and it is important to know which *T. cruzi* genotypes are carried by the vectors. The authors found that in the wild *T. infestans* from the Bolivian Andean region, a principal group of genotype was circulating. In the lowlands (Bolivian Chaco), another additional genotype group was detected. Together with exploring at large scale which genotypes are infecting *T. infestans* wild populations, this study opens the discussion on the origin *T. cruzi* genotype groups. Also this study completes our basic knowledge on *T. cruzi* subspecific genetic variability, and therefore brings new tools for molecular epidemiology of Chagas disease.

cycles and prevalent in human infections in the Southern Cone countries; TcV and TcVI are hybrid genotypes, whose putative ancestors are TcII and TcIII [19,20]. Finally, TcIII and IV are more rarely sampled throughout the endemic area and seem to be specific to sylvatic cycles, with few reports of human infection.

In Bolivia, *Triatoma infestans* (Hemiptera: Reduviidae) remains the main domestic vector of *T. cruzi*. It is the target of the National Control Program based on house-spraying with residual insecticides. Wild populations of *T. infestans* are now seriously considered a problem to keep the villages free of triatomines [21–23]. Sylvatic populations of the vector have been described in different Andean valleys in Bolivia [21,22,24,25]. Moreover, the detection of wild

foci of *T. infestans* in the Bolivian Chaco has extended the distribution of wild populations to the lowlands of Bolivia [26].

Two main genotypes belonging to TcI and TcV were previously identified in the domestic cycle in regions where *T. infestans* was the vector [27–33]. Moreover, these genotypes had been identified in strict sympatry in the same host [27,34]. In contrast, few data are available on DTUs circulating in sylvatic *T. infestans*. Dujardin et al. [35] found that wild *T. infestans* were infected with the same *T. cruzi* genotypes as domestic *T. infestans* (TcI and TcV), with the same frequencies. They took this as additional evidence of a lack of speciation between wild and domestic *T. infestans*. Another study identified TcI as the only DTU in a wild focus located in the valley of Cochabamba, Bolivia [25].

Among the genetic markers that can identify the different *T. cruzi* groups the non-transcribed spacer region of the mini-exon gene was previously proposed to discriminate *T. cruzi* I (now TcI), *T. cruzi* II (now TcII), *T. cruzi* zymodeme 3 (now TcIV), using the mini-exon multiplex PCR (MMPCR) [36]. Recently, the MMPCR analysis was applied on a large sample of stocks (previously characterized by multilocus typing) belonging to the six DTUs, showed 3 DTU tags: a 200 bp PCR product for TcI, a 250 bp for TcII, TcV and TcVI and a 150 bp for TcIII and TcIV [37]. This method was also successfully applied for rapid DTU identification in triatomine digestive tracts [5,38]. Moreover, among housekeeping genes, the glucose-6-phosphate isomerase (*Gpi*), a single-copy nuclear gene, presented a sequence polymorphism that is valuable for characterization of DTUs [19,39].

In this study, we applied the MMPCR and *Gpi* sequencing for the characterization of *T. cruzi* DTUs directly in the digestive tract of wild *T. infestans* collected in Bolivia.

## Materials and Methods

### Origin of *T. infestans* populations

The triatomines were sampled in sylvatic environments from April to November 2009 (Figure 1). Collections were carried out using mice-baited adhesive traps [40] in different ecotopes such as



**Figure 1. Sampling sites of wild populations of *Triatoma infestans* in Bolivia.** The sites were numbered from 1 to 36, Bolivian department names are indicated, for the DTU *T. cruzi* results see in Table 1. doi:10.1371/journal.pntd.0001650.g001

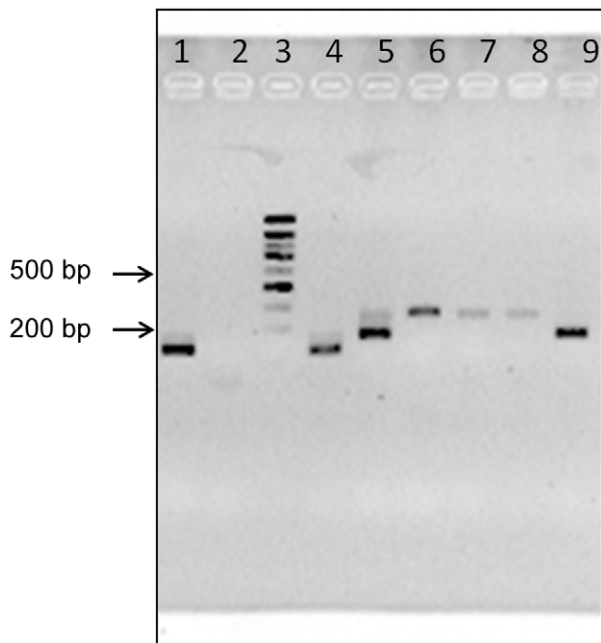
**Table 1.** Geographical origin, ecotopes of wild triatomines and *T. cruzi* identification by MMPCR.

Geographical origin								DTU groups of <i>T. cruzi</i> <sup>d</sup>		
N° site	Ecoregion <sup>a</sup>	Latitude (S)	Longitude (W)	Alt. (m)	Area	Ecotopes <sup>b</sup>	No. of specimens <sup>c</sup>	TcI	TcII, TcV, TcVI	TcIII, TcIV
1	BSIA	16°41'21.0"	68°00'40.9"	2679	A	1	5	5		
2	BSIA	16°42'08.0"	68°00'16.3"	2821	A	2	2	1		
3	BSIA	16°42'42.9"	67°59'25.3"	2732	A	3, 4	23	21		
4	BSIA	16°42'56.3"	67°52'13.6"	2459	A	3, 5	6	5		
5	BSIA	16°43'11.1"	67°52'26.5"	2380	A	3, 6, 7	11	9		
6	BSIA	16°48'51.5"	67°42'18.3"	1873	A	1, 6, 7, 8	19	19		
7	BSIA	16°49'43.3"	67°42'17.0"	1957	A	1, 7, 9	19	19		
8	BSIA	16°53'12.2"	67°42'43.1"	2095	A	7	13	13		
9	BSIA	16°55'48.8"	67°41'32.9"	2182	A	4, 8	18	16		
10	BSIA	17°00'30.1"	67°39'25.2"	2356	A	4, 6, 7	47	43		
11	BSIA	17°01'54.8"	67°40'38.6"	2159	A	2	2	1		
12	BSIA	17°03'55.6"	67°39'51.4"	2619	A	1, 3, 5, 7	5	5		
13	BSIA	17°04'07.7"	67°39'25.5"	2645	A	4, 7	5	5		
14	BSIA	17°04'24.2"	67°38'42.7"	2543	A	7	1	1		
15	BSIA	17°04'25.2"	67°37'59.7"	2493	A	6, 7, 10	5	5		
16	BSIA	17°04'44.6"	67°37'57.0"	2602	A	6, 7, 9	17	16		
17	BSIA	17°07'32.0"	67°35'59.5"	2864	A	7, 11	6	3		
18	BSIA	17°08'10.8"	67°35'17.9"	2767	A	3, 4, 6, 9	6	4		
19	BSIA	17°42'45.2"	66°29'38.8"	2583	A	7	9	9		
20	BSIA	17°25'39.2"	66°15'32.1"	2576	A	4, 7	11	11		
21	BSIA	17°27'45.5"	66°18'51.0"	2543	A	7	3	3		
22	BSIA	17°28'37.5"	66°08'16.1"	2710	A	7	14	4		
23	BSIA	17°59'16.4"	65°50'11.1"	2059	A	7, 8	10			1
24	BSIA	18°00'44.5"	65°48'32.6"	2025	A	7	4	3		
25	BSIA	18°01'50.9"	65°47'18.7"	1968	A	8	11			1
26	BSIA	18°06'21.0"	65°45'31.3"	2571	A	8	5			
27	PP	21°37'16.8"	65°48'46.0"	2963	A	6	7	7		
28	PP	21°44'51"	65°49'26.0"	3080	A	4	30			
29	CS	18°35'52.6"	65°07'33.4"	1754	I <sup>g</sup>	3, 7	1			1
30	BTB	19°55'39.2"	63°54'08.8"	1039	I <sup>g</sup>	uk <sup>e</sup>	1	1		
31	GC	19°21'20.8"	62°34'10.2"	398	N-A	12, uk <sup>f</sup>	3			
32	GC	20°11'10.1"	63°61'21.7"	614	N-A	12	2		1 <sup>h</sup>	
33	GC	20°15'09.1"	62°58'26.9"	573	N-A	12	6			
34	GC	21°09'25.3"	63°22'30.7"	488	N-A	12	1			
35	GC	21°22'37.0"	63°21'34.8"	351	N-A	12	2	1 <sup>h</sup>		
36	GC	21°50'50.6"	63°14'51.6"	443	N-A	12	3			
Total							333	229	1	3

<sup>a</sup>The ecoregions are according to Ibsch et al. (2008), BSIA Bosque Seco Inter Andino, PP Prepuna, CS Chaco Serrano, BTB Bosque Tucumano Boliviano, GC Gran Chaco;  
<sup>b</sup>1 crack, 2 cliff, 3 under vegetation, 4 burrow, 5 adobe wall, 6 stone wall, 7 under stones, 8 cave, 9 hollow ground, 10 bird nest, 11 graves, 12 hollow tree, uk unknown;  
<sup>c</sup>Total number of specimens tested by MMPCR;  
<sup>d</sup>DTUs Discrete Typing Unit were identified by MMPCR, the undetermined samples were MMPCR negative;  
<sup>e</sup>Specimen captured on the exterior wall of a house;  
<sup>f</sup>Captured by light traps.  
<sup>g</sup>Between Andean and non-Andean areas.  
<sup>h</sup>These specimens were dark morphs.  
 doi:10.1371/journal.pntd.0001650.t001

under bush and bromeliads, rocks, burrows, hollow trees, and stone walls. The bugs were transported alive to the laboratory for species confirmation using morphological taxonomic keys [41].

Table 1 summarizes the geographical and ecotope origin of the collected *T. infestans* according to the ecoregions defined in [42]. Briefly, the majority of the bugs were collected in Andean valleys



**Figure 2. Illustrating electrophoresis of MMPCR products.** Ez-vision stained 3% agarose gel containing MMPCR products obtained from DNA extracts of reference strains and current digestive tracts of *T. infestans*. Lane 1, sample Tor05; lane 2, PCR negative sample; lane 3, the molecular weight marker Smart Ladder (Eurogentec, Angers, France); lane 4–6, reference strains (M6241c6, P209c11 and MNc12 respectively); lane 7–8, sample Char09 (two independent PCR); lane 9, sample Lur112. See Table 2 for DTUs information.  
doi:10.1371/journal.pntd.0001650.g002

where sylvatic foci have been previously described [21,24] and the others were collected from new foci in the Bolivian Chaco where the “dark morph” type of *T. infestans* was discovered [22,26]. Before dissection, feces from each bug were examined for the presence of trypanosomatid by direct microscopic observation at  $\times 400$  magnification (mo). Bugs were then dissected under a safety hood, and the digestive tracts stored at  $-20^{\circ}\text{C}$ .

#### Mini-exon multiplex PCR (MMPCR)

DNA was extracted from triatomine digestive tracts with the QIAamp DNA mini kit (Quiagen, Courtaboeuf, France), according to the blood sample protocol. The multiplex primer set was as previously described: three oligonucleotides derived from the hypervariable region of *T. cruzi* mini-exon repeats, and a common downstream oligonucleotide, corresponding to sequences present in the best conserved region of the mini-exon gene used as opposing primer in the multiplex reaction. PCR conditions were according to Fernandes et al. [36], with slight modifications. DNA was amplified in a 25  $\mu\text{l}$  reaction volume containing 1 $\times$  reaction buffer, 1.5 mM  $\text{MgCl}_2$ , 50  $\mu\text{M}$  of each nucleotide, 0.2  $\mu\text{M}$  of each primer, 0.5 UI of Taq polymerase (Roche Applied Science, Penzberg, Germany). The amplifications were performed in a thermocycler (Eppendorf, Hamburg, Germany), in previously described conditions [36]. PCR products were separated on 3% agarose gel using the molecular weight marker Smart Ladder (Eurogentec, Angers, France) and visualized under UV with Ez-vision (Amresco, Solon, OH, USA). The discrimination between DTUs was according to Aliaga et al. [37].

#### PCR of the *T. cruzi* glucose-6-phosphate isomerase fragment

A 652 bp fragment was amplified with a set of primers, forward (*Gpi-L*) starting at position 591 of the gene (5'-CGCCATGTTGT-GAATATTGG-3') and reverse (*Gpi-R*) starting at position 1246 (5'-TTCCATTGCTTTCCATGTCA-3'), from a subsample of 15 DNAs which had given an intense MMPCR band. DNA was amplified in a 25  $\mu\text{l}$  reaction volume containing 0.75 mM  $\text{MgCl}_2$ , 0.2 mM of each nucleotide, 0.4  $\mu\text{M}$  of each primer, 2.5 UI of Taq DNA polymerase (Roche Applied Science, Penzberg, Germany), and 20 ng of DNA template. The amplification took place in a thermocycler (Eppendorf, Hamburg, Germany), with the following cycle conditions:  $94^{\circ}\text{C}$  for 3 min;  $94^{\circ}\text{C}$  for 1 min,  $58^{\circ}\text{C}$  for 1 min, and  $72^{\circ}\text{C}$  for 1 min (35 cycles);  $72^{\circ}\text{C}$  for 5 min. Purification and direct sequencing of both strands of DNA amplicons were performed by the company MACROGEN (Seoul, South Korea). Sequences were aligned and corrected using BioEdit software v. 7.0.9 [43], and a 458 bp partial sequence was resolved for each sequence (from nucleotide site 691–1148).

## Results

#### Mini-exon multiplex PCR (MMPCR) analysis

A total of 333 DNA samples from digestive tracts of wild *T. infestans* were processed in MMPCR for DTU identification. Among them 20.1% were adults of both sexes, 64.1% 4<sup>th</sup> and 5<sup>th</sup> instar nymphs, and 15.8% 2<sup>nd</sup> and 3<sup>rd</sup> instar nymphs. Before dissection, the bug feces were examined (85.0% of the total sample) using microscopy. The parasite infection rate was 71.7% in Andean specimens while no positive insect was found among the 17 specimens from Chaco (GC ecoregion). The accordance between microscopic observation and MMPCR was 82%, with 93.1% of positive MMPCR when mo was positive and 17.5% when mo was negative. The identification of the three DTUs was assessed by determining the molecular weight of the MMPCR products for each sample (Table 1, Figure 2). The results showed that the large majority (98.3%) of the 234 wild *T. infestans* specimens were infected by TcI (PCR products of 200 bp). Only one sample from an adult *T. infestans* (“dark morph” type) collected at site 32 (GC ecoregion) gave a 250 bp MMPCR product corresponding to TcII, TcV, or TcVI. Three other samples (sites 23, 25, and 29) gave a 150 bp MMPCR products corresponding to either TcIII or TcIV. The MMPCR product of the specimen of the latter group captured at site 29 was sequenced and the DNA fragment (64 bp) matched the TcIII reference stock named M5631 (accession No AF050521.1 and AY367126.1, 98% identity).

#### Sequence variability of the *Gpi* gene from *T. cruzi* infecting wild *T. infestans*

A partial sequence of the *Gpi* obtained from 15 samples (13 from the set corresponding to TcI, one from the set corresponding to TcII, TcV, or TcVI, and one from the set corresponding to either TcIII or TcIV) were sequenced in order to explore the variability within TcI and to discriminate the DTUs within the other sets. The 458 bp partial sequences (starting at site 691 and ending at site 1148 of the entire CL Brener stock gene, accession no. XM815802.1) were aligned with the sequences corresponding to *T. cruzi* reference stocks belonging to the six DTUs previously deposited in GenBank (Table 2). With no ambiguity, each sequence under study had been attributed to a DTU. Within TcI, 3 sequences were observed: the most frequent (11 stocks) presented 100% identity with the two identical sequences from TcI reference stocks (OPS21 and P/209) deposited in GenBank;

**Table 2.** Variable sites of glucose phosphate isomerase gene of *T. cruzi* identified in wild *T. infestans* compared with reference stocks.

Name	Accession no.	DTU <sup>a</sup>	No. of current stock	Country	Area <sup>b</sup>	Nucleotide position																							
						715	739	784	805	811	828	829	830	831	832	856	859	863	898	913	940	945	1030	1051	1108				
OPS21	AY484472	TcI		Venezuela		A	A	A	T	T	G	T	G	T	G	A	G	A	G	T	C	A	G	T	C	G	C	T	
P/209cl1	AY484473	TcI		Bolivia		.	.	.	.	.	.	.	.	.	.	.	.	.	.	.	.	.	.	.	.	.	.	.	
Aiq02 <sup>c</sup>	JN6533335	TcI	1	Bolivia	A	.	.	.	.	.	.	.	.	.	.	.	.	.	.	.	.	.	.	.	.	.	.	.	
Lur 112 <sup>cd</sup>	JN653324-34	TcI	11	Bolivia	A	.	.	.	.	.	.	.	.	.	.	.	.	.	.	.	.	.	.	.	.	.	.	.	
Vis01c	JN6533336	TcI	1	Bolivia	A	.	.	.	.	.	.	.	.	.	.	.	.	.	.	.	.	.	.	.	.	.	.	.	
Tu18cl2	AY484477	TcII		Brazil		.	T	.	C	C	A	.	.	.	.	.	.	.	.	.	T	T	G	.	.	A	.	G	
CBBcl3	AY484476	TcII		Chile		.	T	.	C	C	A	.	.	.	.	.	.	.	.	.	T	T	G	.	.	A	.	G	
Char09 <sup>c</sup>	JN6533338	TcII	1	Bolivia	NA	.	T	.	C	C	A	.	.	.	.	.	.	.	.	.	T	T	G	.	.	A	.	G	
M6241cl6	AY484478	TcIII		Brazil		.	.	.	.	.	.	.	.	.	.	.	.	.	.	.	.	.	.	.	.	.	.	.	
X110/8	AY484479	TcIII		Paraguay		.	.	.	.	.	.	.	.	.	.	.	.	.	.	.	.	.	.	.	.	.	.	.	
Tor05 <sup>c</sup>	JN6533337	TcIII	1	Bolivia	A	.	.	.	.	.	.	.	.	.	.	.	.	.	.	.	.	.	.	.	.	.	.	.	
Canllcl11	AY484474	TcIV		Brazil		.	.	.	.	.	.	.	.	.	.	.	.	.	.	.	.	.	.	.	.	.	.	.	
EP272	AY484475	TcIV		Colombia		.	.	.	.	.	.	.	.	.	.	.	.	.	.	.	.	.	.	.	.	.	.	.	
MNGl2	AY484480	TcV		Chile		.	W	.	Y	Y	R	K	R	K	R	R	K	R	K	.	Y	.	Y	.	G	.	M	.	S
Bug2148cl11	AY484481	TcV		Brazil		.	W	.	Y	Y	R	R	R	R	R	R	R	R	R	.	Y	.	Y	.	G	.	M	.	S
ClBrener	AY484482	TcVI		Brazil		R	W	.	Y	Y	Y	K	R	R	K	R	K	R	K	.	.	.	.	.	R	.	.	.	
TulaCl2	AY484483	TcVI		Chile		R	W	.	Y	Y	Y	R	K	R	K	R	K	R	K	.	.	.	.	.	G	.	M	.	S

<sup>a</sup>DTU, Discrete Typing Unit;  
<sup>b</sup>A for Andean, NA for Non-Andean (lowland);  
<sup>c</sup>Samples under study;  
<sup>d</sup>Ten other samples had identical sequence, they were from Northern Andean area.  
 doi:10.1371/journal.pntd.0001650.t002

the two other sequences exhibited a single mutation and the Vis01 stock identified in a triatomine bug captured at site 27, presented a heterozygous pattern at nucleotide position 940. The sequence of the Char09 of the second set (corresponding to TcII, TcV, or TcVI), detected in a “dark morph” (site 32), presented 100% identity with two identical TcII reference stocks (Tu18cl2 and CBBcl3). For the sample of the last set corresponding to either TcIII or TcIV (Tor05 from site 25), the sequence presented 100% identity with two identical TcIII reference stocks (M6241cl6 and X110/8).

## Discussion

Recently, an active search for new foci of wild *T. infestans* in Bolivia enabled us to show that their distribution was broader than initially described [21,44]. Also, few data on the genetic characterization of *T. cruzi* stocks infecting these vector populations were available, apart from the work by Dujardin et al ([35], conducted using multilocus enzyme electrophoresis, and the detection of the only TcI at Cotapachi 15 km west of Cochabamba city (Andean area) [25]. In the present context, where wild *T. infestans* highly infected can enter houses and recolonize them after domestic populations have been eliminated by insecticide spraying, it is important to know which *T. cruzi* DTUs are carried by the vectors. In this study, 234 *T. cruzi* stocks isolated from wild *T. infestans* were characterized by MMPCR. The vectors came from several areas mainly situated in two ecoregions in Bolivia, the Inter-Andean Dry Forest and the Gran Chaco where the “dark morph” was found. Regarding the detection of parasites in bugs, the correlation between detection of infection by microscopy (mo) and by the method of MMPCR was high (82%). However, some infected bugs (mo positive) were MMPCR negative probably due to the presence of inhibitors factors of the polymerase in the DNA extracts. At the contrary, several samples mo negatives were MMPCR positive, which allowed us to detect and identify few strains in dark morph specimens. In the overall sample, the TcI DTU is widely dominant, but in the Andean and intermediate areas TcIII stocks were detected. In the lowlands, only TcI and TcII were characterized in the “dark morph” specimens.

Interestingly, the DTU distribution in wild *T. infestans* is very different from that reported in domestic *T. infestans* collected before the vector control campaigns undertaken on a large scale in Bolivia since 2003; the frequencies of TcI only, TcV only, and mixed infections (TcI and TcV) were 38.6%, 16.8% and 32.7% respectively [31]. At the same time, TcV was mostly detected in patients during the chronic phase of the infection while both TcI and TcV were detected in younger patients with early infection [28,45]. As for the vectors, it was suggested that the domiciliation of *T. infestans* had taken place in high Andean valleys and that the

dispersal of domestic *T. infestans* to other areas had occurred by human transport [46,47]. The current observations do not fit these hypotheses, since the only TcI (and to a lesser extent TcIII) would then have been introduced into domestic cycles but not TcV, unless it is assumed that TcV disappeared from the wild *T. infestans* cycle in the Andes valleys after its domiciliation.

Among the six *T. cruzi* DTUs, TcV and TcVI are composed of stocks that appear to be recent hybrids between TcII and TcIII [19]. Consequently, it is tempting to speculate that they might have arisen in an area where the putative parental DTUs coexist. Moreover, this hybridization event is still considered to have occurred much earlier than human colonization in South America [48]. Consequently, parental and hybrid DTUs are likely to coexist in the sylvatic cycle in a putative geographical area in South America. Lately, the Andean origin of *T. infestans* was challenged by the hypothesis of Chaquena origin [26,44,49,50]. If parental and hybrid DTUs are not found in the sylvatic cycle in the Andes, an alternative might be the Gran Chaco region. There is no information regarding the genetic characterization of *T. cruzi* in the sylvatic cycle at the Bolivian lowlands, except for a report of a TcVI stock isolated from a *Didelphis marsupialis* specimen captured on the Amazon slope [51]. In the Paraguayan Chaco, TcII, TcIII and TcV have been identified in different wild mammal species [52] and in the Argentinean Chaco TcI was identified in *Didelphis albiventris* and TcVI in one *Conepatus chinga* [53]. In spite of fairly scarce data, the hypothesis that hybrid DTUs may have originated in Chaco should be considered, especially considering the detection of all DTUs except for TcIV in the domestic cycle in the Bolivian Gran Chaco (unpublished data). The search for DTUs circulating in sylvatic cycles will provide more valid information on the evolution of *T. cruzi* than studies conducted in domestic cycles where the geographical distribution of the DTUs is skewed by passive transport of parasites (human migration, triatomine transports) and by the selection of specific DTUs by hosts, considering that host diversity is lower in the domestic cycle than in sylvatic cycles.

## Acknowledgments

We are particularly grateful for the direction of the Inlasa (Instituto de Laboratorios de Salud, La Paz, Bolivia), and Dr. José Raphael Gutiérrez and Dr. Walter Agreda for hosting this work in the Department of Entomology, directed by Dr. Tamara Chavez.

## Author Contributions

Conceived and designed the experiments: SFB CB FN. Performed the experiments: CA. Analyzed the data: SFB CA CB. Contributed reagents/materials/analysis tools: SFB CA EW RB RS FN. Wrote the paper: SFB CA CB MT FN.

## References

- Schmunis GA, Yadon ZE (2010) Chagas disease: a Latin American health problem becoming a world health problem. *Acta Trop* 115: 14–21.
- Hotez PJ, Bottazzi ME, Franco-Paredes C, Ault SK, Periago MR (2008) The neglected tropical diseases of Latin America and the Caribbean: a review of disease burden and distribution and a roadmap for control and elimination. *Plos Negl Trop Dis* 2: e300.
- WHO (2007) World Health Organization Global health atlas. Available: <http://www.who.int/globalatlas/>. Accessed 2 March 2008.
- Noireau F, Dujardin JP (2010) Biology of Triatominae. In: Telleria J, Tibayrenc M, eds. *American Trypanosomiasis Chagas disease One hundred Years of Research*. London: Elsevier. pp 149–164.
- Bosseno MF, Barnabé C, Sierra MJ, Kengne P, Guerrero S, et al. (2009) Wild ecotopes and food habits of *Triatoma longipennis* infected by *Trypanosoma cruzi* lineages I and II in Mexico. *Am J Trop Med Hyg* 80: 988–991.
- Salvatella R, Calegari L, Puime A, Basmadjian Y, Rosa R, et al. (1994) Feeding pattern of *Triatoma rubrovaria* (Blanchard, 1843) (Hemiptera, Triatominae) in peridomestic habitats, of a rural area of Uruguay. *Rev Inst Med Trop Sao Paulo* 36: 311–320.
- Salvatella R, Rosa R, Basmadjian Y, Puime A, Calegari L, et al. (1995) Ecology of *Triatoma rubrovaria* (Hemiptera, Triatominae) in wild and peridomestic environments of Uruguay. *Mem Inst Oswaldo Cruz* 90: 325–328.
- Freitas SP, Lorosa ES, Rodrigues DC, Freitas AL, Goncalves TC (2005) Feeding patterns of *Triatoma pseudomaculata* in the state of Ceara, Brazil. *Rev Saude Publica* 39: 27–32.
- Tibayrenc M, Ward P, Moya A, Ayala FJ (1986) Natural populations of *Trypanosoma cruzi*, the agent of Chagas disease, have a complex multiclonal structure. *Proc Natl Acad Sci Usa* 83: 115–119.
- Tibayrenc M, Barnabé C, Telleria J (2010) Reticulate Evolution in *Trypanosoma cruzi*: Medical and Epidemiological Implications. In: Telleria J, Tibayrenc M,

- eds. American trypanosomiasis Chagas disease One hundred years of research. Burlington: Elsevier. pp 475–488.
11. Tibayrenc M (1998) Integrated genetic epidemiology of infectious diseases: the Chagas model. Mem Inst Oswaldo Cruz 93: 577–580.
  12. Barnabé C, Brisse S, Tibayrenc M (2000) Population structure and genetic typing of *Trypanosoma cruzi*, the agent of Chagas disease: a multilocus enzyme electrophoresis approach. Parasitology 120: 513–526.
  13. Brisse S, Barnabé C, Tibayrenc M (2000) Identification of six *Trypanosoma cruzi* phylogenetic lineages by random amplified polymorphic DNA and multilocus enzyme electrophoresis. Int J Parasitol 30: 35–44.
  14. Zingales B, Andrade SG, Briones MR, Campbell DA, Chiari E, et al. (2009) A new consensus for *Trypanosoma cruzi* intraspecific nomenclature: second revision meeting recommends TcI to TcVI. Mem Inst Oswaldo Cruz 104: 1051–1054.
  15. Llewellyn MS, Miles MA, Carrasco HJ, Lewis MD, Yeo M, et al. (2009) Genome-scale multilocus microsatellite typing of *Trypanosoma cruzi* discrete typing unit I reveals phylogenetic structure and specific genotypes linked to human infection. Plos Pathog 5: e1000410.
  16. Lewicka K, Brenière SF, Barnabé C, Dedet JP, Tibayrenc M (1995) An isoenzyme survey of *Trypanosoma cruzi* genetic variability in sylvatic cycles from French Guiana. Exp Parasitol 81: 20–28.
  17. Cura CI, Mejía-Jaramillo AM, Duffy T, Burgos JM, Rodriguero M, et al. (2010) *Trypanosoma cruzi* I genotypes in different geographical regions and transmission cycles based on a microsatellite motif of the intergenic spacer of spliced-leader genes. Int J Parasitol 40: 1599–1607.
  18. Herrera C, Guhl F, Falla A, Fajardo A, Montilla M, et al. (2009) Genetic Variability and Phylogenetic Relationships within *Trypanosoma cruzi* I Isolated in Colombia Based on Minixion Gene Sequences. J parasitol Res pii 897364.
  19. Broutin H, Tarrieu F, Tibayrenc M, Oury B, Barnabé C (2006) Phylogenetic analysis of the glucose-6-phosphate isomerase gene in *Trypanosoma cruzi*. Exp Parasitol 113: 1–7.
  20. Westenberger SJ, Barnabé C, Campbell DA, Sturm NR (2005) Two hybridization events define the population structure of *Trypanosoma cruzi*. Genetics 171: 527–543.
  21. Buitrago R, Waleckx E, Bosseno MF, Zoveda F, Vidaurre P, et al. (2010) First report of widespread wild populations of *Triatoma infestans* (Reduviidae, Triatominae) in the valleys of La Paz, Bolivia. Am J Trop Med Hyg 82: 574–579.
  22. Noireau F, Cortez MG, Monteiro FA, Jansen AM, Torrico F (2005) Can wild *Triatoma infestans* foci in Bolivia jeopardize Chagas disease control efforts? Trends Parasitol 21: 7–10.
  23. Noireau F (2009) Wild *Triatoma infestans*, a potential threat that needs to be monitored. Mem Inst Oswaldo Cruz 104 Suppl 1: 60–64.
  24. Cortez MR, Emperaire L, Piccinali RV, Gurtler RE, Torrico F, et al. (2007) Sylvatic *Triatoma infestans* (Reduviidae, Triatominae) in the Andean valleys of Bolivia. Acta Trop 102: 47–54.
  25. Cortez MR, Pinho AP, Cuervo P, Alfaro F, Solano M, et al. (2006) *Trypanosoma cruzi* (Kinetoplastida Trypanosomatidae): ecology of the transmission cycle in the wild environment of the Andean valley of Cochabamba, Bolivia. Exp Parasitol 114: 305–313.
  26. Noireau F, Flores R, Gutierrez T, Dujardin JP (1997) Detection of sylvatic dark morphs of *Triatoma infestans* in the Bolivian Chaco. Mem Inst Oswaldo Cruz 92: 583–584.
  27. Flores-Chavez M, Bosseno MF, Bastrenta B, Dalenz JL, Hontebeyrie M, et al. (2006) Polymerase chain reaction detection and serologic follow-up after treatment with benznidazole in Bolivian children infected with a natural mixture of *Trypanosoma cruzi* I and II. Am J Trop Med Hyg 75: 497–501.
  28. Bosseno MF, Torrico F, Telleria J, Noireau F, Brenière SF (1995) Polymerase chain reaction: detection and characterization of *Trypanosoma cruzi* strains in chagasic children. Medicina Buenos Aires 55: 277–279.
  29. Brenière SF, Bosseno MF, Noireau F, Yacsik N, Liegeard P, et al. (2002) Integrate study of a Bolivian population infected by *Trypanosoma cruzi*, the agent of Chagas disease. Mem Inst Oswaldo Cruz 97: 289–295.
  30. Brenière SF, Lopez J, Vargas F, Barnabé C (1997) Genetic variability and microdistribution of *Triatoma infestans* genotypes and *Trypanosoma cruzi* clones in Arequipa region (Peru). Mem Inst Oswaldo Cruz 92: 401–408.
  31. Brenière SF, Bosseno MF, Telleria J, Carrasco R, Vargas F, et al. (1995) Field application of polymerase chain reaction diagnosis and strain typing of *Trypanosoma cruzi* in Bolivian triatomines. Am J Trop Med Hyg 53: 179–184.
  32. Brenière SF, Carrasco R, Revollo S, Aparicio G, Desjeux P, et al. (1989) Chagas' disease in Bolivia: clinical and epidemiological features and zymodeme variability of *Trypanosoma cruzi* strains isolated from patients. Am J Trop Med Hyg 41: 521–529.
  33. Brenière SF, Llanos B, Tibayrenc M, Desjeux P (1985) Isoenzymic studies and epidemiological data of *Trypanosoma cruzi* from Arequipa (Peru), Pacific side. Ann Soc Belge Med Trop 65 Suppl 1: 63–66.
  34. Bosseno MF, Telleria J, Vargas F, Yacsik N, Noireau F, et al. (1996) *Trypanosoma cruzi*: study of the distribution of two widespread clonal genotypes in Bolivian *Triatoma infestans* vectors shows a high frequency of mixed infections. Exp Parasitol 83: 275–282.
  35. Dujardin JP, Tibayrenc M, Venegas E, Maldonado L, Desjeux P, et al. (1987) Isozyme evidence of lack of speciation between wild and domestic *Triatoma infestans* (Heteroptera: Reduviidae) in Bolivia. J Med Entomol 24: 40–45.
  36. Fernandes O, Santos SS, Cupolillo E, Mendonca B, Derre R, et al. (2001) A mini-exon multiplex polymerase chain reaction to distinguish the major groups of *Trypanosoma cruzi* and *T. rangeli* in the Brazilian Amazon. Trans R Soc Trop Med Hyg 95: 97–99.
  37. Aliaga C, Brenière SF, Barnabé C (2011) Further interest of miniexon multiplex PCR for a rapid typing of *Trypanosoma cruzi* DTU groups. Infect Genet Evol 11: 1155–1158.
  38. Bosseno MF, Garcia LS, Baunaure F, Gastelum EM, Gutierrez MS, et al. (2006) Identification in triatomine vectors of feeding sources and *Trypanosoma cruzi* variants by heteroduplex assay and a multiplex miniexon polymerase chain reaction. Am J Trop Med Hyg 74: 303–305.
  39. Llewellyn MS, Lewis MD, Acosta N, Yeo M, Carrasco HJ, et al. (2009) *Trypanosoma cruzi* IIc: Phylogenetic and Phylogeographic Insights from Sequence and Microsatellite Analysis and Potential Impact on Emergent Chagas Disease. Plos Negl Trop Dis 3: e510.
  40. Noireau F, Flores R, Vargas F (1999) Trapping sylvatic Triatominae (Reduviidae) in hollow trees. Trans R Soc Trop Med Hyg 93: 13–14.
  41. Lent H, Wygodzinsky P (1979) Revision of the Triatominae (Hemiptera, Reduviidae), and significance as vectores of Chagas' disease. Bull Am Museum Nat Hist 163: 125–520.
  42. Ibisch PL, Beck SG, Gerckmann B, Carretero A (2008) La Diversidad biológica. In: Ibisch PL, Mérida G, eds. Biodiversidad: la riqueza de Bolivia Estado de conocimiento y conservación. Santa Cruz de la Sierra: FAN Bolivia.
  43. Hall TA (1999) BioEdit: a user-friendly biological sequence alignment editor and analysis program for Windows 95/98/NT. Nucleic Acids Symposium Series 41: 95–98.
  44. Waleckx E, Salas R, Huaman N, Buitrago R, Bosseno MF, et al. (2011) New insights on the Chagas disease main vector *Triatoma infestans* (Reduviidae, Triatominae) brought by the genetic analysis of Bolivian sylvatic populations. Infect Genet Evol 11: 1045–1057.
  45. Brenière SF, Bosseno MF, Telleria J, Bastrenta B, Yacsik N, et al. (1998) Different behavior of two *Trypanosoma cruzi* major clones: transmission and circulation in young Bolivian patients. Exp Parasitol 89: 285–295.
  46. Schofield CJ (1988) Biosystematics of the Triatominae.: In: Service MW, ed. Biosystematics of Haematophagous Insects, Clarendon Press Oxford. pp 284–312.
  47. Cortez MR, Monteiro FA, Noireau F (2010) New insights on the spread of *Triatoma infestans* from Bolivia—implications for Chagas disease emergence in the southern cone. Infect Genet Evol 10: 350–353.
  48. Machado CA, Ayala FJ (2001) Nucleotide sequences provide evidence of genetic exchange among distantly related lineages of *Trypanosoma cruzi*. Proc Natl Acad Sci Usa 98: 7396–7401.
  49. Ceballos LA, Piccinali RV, Berkunsky I, Kitron U, Gurtler RE (2009) First finding of melanic sylvatic *Triatoma infestans* (Hemiptera: Reduviidae) colonies in the Argentine Chaco. J Med Entomol 46: 1195–1202.
  50. Quisberth S, Waleckx E, Monje M, Chang B, Noireau F, et al. (2011) “Andean” and “non-Andean” ITS-2 and mtCytB haplotypes of *Triatoma infestans* are observed in the Gran Chaco (Bolivia): population genetics and the origin of reinfestation. Infect Genet Evol 11: 1006–1014.
  51. Valette E, Brenière SF, Le Pont F, Desjeux P (1988) Zymodemes of *Trypanosoma cruzi* isolated from wild mammals in Bolivia. Mem Inst Oswaldo Cruz 83: 139–140.
  52. Yeo M, Acosta N, Llewellyn M, Sanchez H, Adamson S, et al. (2005) Origins of Chagas disease: Didelphis species are natural hosts of *Trypanosoma cruzi* I and armadillos hosts of *Trypanosoma cruzi* II, including hybrids. Int J Parasitol 35: 225–233.
  53. Cardinal MV, Lauricella MA, Ceballos LA, Lanati L, Marcet PL, et al. (2008) Molecular epidemiology of domestic and sylvatic *Trypanosoma cruzi* infection in rural northwestern Argentina. Int J Parasitol 38: 1533–1543.