



HAL
open science

SMC composites waste management as reinforcing fillers in polypropylene by combination of mechanical and chemical recycling processes

Didier Perrin, Céline Guillermain, Anne Bergeret, José-Marie Lopez-Cuesta, Gilles Tersac

► To cite this version:

Didier Perrin, Céline Guillermain, Anne Bergeret, José-Marie Lopez-Cuesta, Gilles Tersac. SMC composites waste management as reinforcing fillers in polypropylene by combination of mechanical and chemical recycling processes. *Journal of Materials Science*, 2006, 41 (12), pp.3593-3602. 10.1007/s10853-005-5563-y . hal-01250857

HAL Id: hal-01250857

<https://hal.science/hal-01250857>

Submitted on 7 Apr 2020

HAL is a multi-disciplinary open access archive for the deposit and dissemination of scientific research documents, whether they are published or not. The documents may come from teaching and research institutions in France or abroad, or from public or private research centers.

L'archive ouverte pluridisciplinaire **HAL**, est destinée au dépôt et à la diffusion de documents scientifiques de niveau recherche, publiés ou non, émanant des établissements d'enseignement et de recherche français ou étrangers, des laboratoires publics ou privés.

SMC composites waste management as reinforcing fillers in polypropylene by combination of mechanical and chemical recycling processes

DIDIER PERRIN, CÉLINE GUILLERMAIN, ANNE BERGERET,
JOSÉ-MARIE LOPEZ-CUESTA*, GILLES TERSAC
Ecole des Mines d'Alès, France

A new process of management of waste of composite materials from Sheet Moulding Compounds (SMC), as reinforcing fillers for thermoplastic materials, including both mechanical and chemical processes is proposed in this paper. Communitied SMC being composed of coated glass fibres intimately mixed with calcium carbonate powder, their reinforcing power is low. First, the fibrous part was increased by partial dissolution of calcium carbonate present in the crushed products SMC. Second, a process of partial solvolysis was developed aiming at strong increasing the interfacial mechanical properties by functionalising of SMC load incorporated into polypropylene/grafted maleic anhydride polypropylene (PP/PP_{gma}). At this effect, we investigated a treatment with a hot triamine (diethylenetriamine, DETA) in order to create a functionalisation, after scission of the bond ester of unsaturated polyester, as bridging amino-succinimide. The effect of this recycling way by partial solvolysis was checked from the mechanical properties of the resulting reinforced PP/PP_{gma} material: Although a lower of Young modulus, better yield stress and especially resilience were observed.

1. Introduction

Sheet Moulding Compounds (SMC) are some of the most largely thermosetting materials used in the composites industry. Their interest is mainly due to their high strength-to-weight ratio, low cost, corrosion resistance and metallic appearance when painted. They associate 25–50 mm chopped glass fibres (GF) and a blend of unsaturated polyester diluted in styrene, calcium carbonate used as filler and low profile additives (mainly polymers), a curing catalytic system and among other additives, a thickener and a releasing agent.

However, major obstacles to the development of the use of SMC, including in its main domains of applications such as transportation, are the heterogeneity of composition and the difficulty of recycling due to its thermoset character and consequently its infusibility and insolubility.

Since non-manageable residues or poor value decomposition products are the final outputs of management methods, only mechanical recycling may lead to fillers which can be used similarly as reinforcing fibres, provided

a good optimization of the process has been achieved, in order to avoid dramatic degradation of the reinforcing filler.

Mechanical recycling has now reached industrial applications [1]. This technique is generally based on granulation and controlled comminution of the composite material, followed by a sieving process. The obtained fractions (fibres, powder) are used for a variety of applications, depending on the particle size, morphology and glass fibre content. For example, medium size fibres (about 1 mm) are recyclable in thermoplastics [2–5]. A part of the present work is focused on this last application. A specific strategy is developed in order to obtain ground SMC fractions with optimised characteristics for their introduction as reinforcing fillers in thermoplastics. The originality of the process consists in association of shredding and removal of a calcium carbonate fraction by dissolution in an acid solution.

A complementary way to mechanical recycling may consist in a chemical treatment of the composite material. Chemical recycling approaches by solvolysis can be applied to the raw composite material or to the fractions

issued from mechanical recycling. Very long and clean fibres were obtained by Winter *et al.* using solvolysis [6]. Nevertheless, this process led to a too low density for the fibre bundle, to allow simply a re-incorporation in a new SMC manufacture. Moreover, solvolysis experiments made in our laboratory showed that the reactivity of glycols, diacids and bisphenols [7] is too low to enable a total depolymerisation of the matrix, whereas amine compounds at boiling temperature allowed the modification of the composite with dissolution of the matrix, leading to GF bundles and CaCO₃ powder almost free of organic contamination. However, the composite dismantlement needs a 10 h treatment of SMC with diamines at 200°C. Finally, the re-employment of fibres, for reinforcement of thermoplastics or thermosets, needs to be evaluated.

Thus, another recycling way could be, not a solvolysis in the target to recover simultaneously the fibres, fillers and the organic part as valuable depolymerisation products, but a partial solvolysis limited at the surface of the particles [7, 8].

Consequently, the originality of this research was to associate a partial solvolysis and a controlled mechanical recycling of SMC waste sheets, with a partial removing of calcium carbonate. This was expected to result in an increase of the chemical reactivity for the selected composite waste fractions, leading to a more convenient process in order to obtain reinforcing fractions. In addition, the chemical reactivity of this reinforcing filler was expected to allow a better coupling with a polymer matrix than non-chemically treated fractions, by using an interfacial coupling agent.

2. Methodology

2.1. Processing purpose from SMC to SMC^{mod}

The proposed treatment of SMC waste is based on a two steps approach that aims to obtain the longest fibres and the highest fibre content in the final product (about 40 wt.%). An initial shredding step with a slight crushing (allowing to liberate the fibres from the embedding polyester matrix) is followed by a selective dissolution of calcium carbonate in an acid bath (in order to increase significantly the amount of fibres) [8].

The optimization of this process was made by a two steps optimal experimental design approach, followed by a validation of capability by Statistical Process Control [8]. Process effectiveness, distribution of fibres length and glass fibre content in the final SMC ground fraction called SMC^{mod} are considered.

2.2. The aim and design of the SMC^{mod} partial solvolysis

Partial solvolysis process is based on the selective degradation of the unsaturated polyester (UP) polymer network by reaction of the ester linkages with an appropriate nucleophile. Several studies on solvolysis of UP have already been carried out last few years.

Tesoro [9] has described investigations focused on the neutral hydrolysis of soluble well-characterized unsaturated polyester. The optimum solvolysis conditions in terms of product yields were 260°C/6 h in mixed solvents systems as butanone/water 1/5 (v/v) or butanone/propan-2-one/water 1/0.25/1 (v/v). These solvents combinations allowed a total liquefaction and an easy separation of the soluble products: The resulting oligomer may be used as curing agent and/or co-reactant for epoxy resin in the development of coatings or for UP resins.

More recently, Kubota [10] worked on the solvolysis of UP resin waste using dicarboxylic acid or diamine to obtain resin raw material. The crushed UP were heated at high temperature (250–280°C) in presence of a basic catalyst (NaOH) under a nitrogen atmosphere and under pressure with a large excess of solvent (weight ratio about 10/1). Several solvents such as adipic acid (AdA), diethylenetriamine (DETA), hydroquinone (HQ) or ethanolamine (MEA) allowed the complete digestion of the UP resin after a 3–5 h reaction. UP resin could be re-synthesised with the obtained resin raw material.

Several publications present studies on solvolysis of SMC with different reagent solvents.

Tufts *et al.* [11] studied the glycolysis with diethylene glycol (DEG) or dipropylene glycol (DPG) of SMC particles and a total solvolysis was obtained with basic catalysts such as sodium methoxide or potassium hydroxide after 2.5 h at 245°C.

Winter *et al.* [6] have described the selective degradation of SMC in presence of water, ethanol, potassium hydroxide and various amines. They showed that the unsaturated polyester polymer network obtained after SMC chips curing could be uncrosslinked in the presence of ethanolamine (MEA) at 180°C for a 48 h treatment. Treatment of SMC with MEA leads to three fractions: GF, filler, and a methanol-soluble polymer containing hydroxyl groups.

According to Tai [12], xylylenediamine (XDA) seems to be a promising reactant for the solvolysis of 1 mm sized SMC particles. The total degradation of the composite was achieved at 170°C after 2 h.

Until now, two patents recommended a partial solvolysis limited to a chemical attack of the composite surface. The aim was to allow the incorporation of the functionalised particles (pulverised or shredded beads) in a epoxy resin compound by amine [12] and phenol with p-toluenesulphonic acid treatment [13].

3. Experimental

3.1. Materials

SMC composite panels (500 × 500 × 4 mm³) provided by Saint Gobain Vetrotex (Chambéry, France) were moulded. They contained 23 wt.% of randomly oriented short E-glass fibres (standard length 25 mm), 55 wt.% CaCO₃, 22 wt.% polyester resin and correspond to the composition of SMC production waste. Commercial short

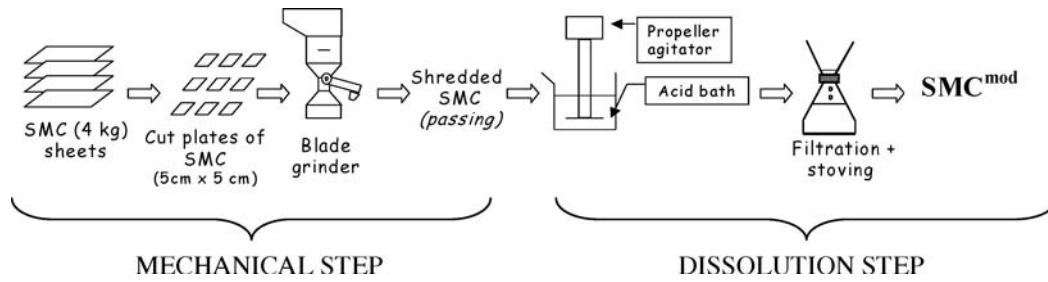


Figure 1 SMC^{mod} design process.

virgin glass fibres of 4.5 mm length and 15 μm diameter, with a surface treatment compatible for polypropylene were also supplied by Saint Gobain Vetrotex. Post-consumer SMC ground fraction (T401), optimised for recycling as thermoplastic filler/reinforcement, was supplied by MCR (Tournon, France) and also used as a reference.

A blend of polypropylene homopolymer (84 wt.%) and (propylene-co-ethylene) 50/50 wt.% copolymer (16 wt.%) used for composite manufacturing was supplied by Appryl (3150 MN5 ($T_m = 169^\circ\text{C}$ and $T_g = 10^\circ\text{C}$)). Orevac CA100 polypropylene, grafted with 0.4% of maleic anhydride (PP_{gma}) ($T_m = 148^\circ\text{C}$ and $T_g = 19^\circ\text{C}$), was supplied by Atofina and used as interfacial agent.

Diethylenetriamine (DETA) was chosen as solvent reagent for its high boiling temperature (205–207°C). Its density and melting point are respectively 0.955 and 39°C.

3.2. SMC modification

SMC panels were first cut and conditioned into smaller parts (50 × 50 × 4 mm³). The modified filler SMC^{mod} was obtained from a mixed process consisting in two steps.

SMC pieces were first ground during 25 min at a 1500 rpm using a Rotoplex-Alpine Rotary Cutter Mill, with a grid of 12 mm [17]. The residence time was less than 2 s. Such conditions allowed to obtain 2–10 mm glass fibres.

The passing ground fraction was then introduced in a H₃PO₄ buffer solution with strong agitation in order to

promote a partial dissolution of CaCO₃. The objective of this second treatment was to obtain the highest fibre fraction in the final recycled fraction (40 to 50% w/w). Two experimental designs were used to optimize the parameters of this second part of the process: 100 g of shredded SMC was dissolved at room temperature into a H₃PO₄ buffer solution (0.3 M, pH 1.9, 5 · 10⁻³ m³). The stirring time and the rotative speed of the propeller agitator were respectively of 60 min and 1100 rpm. The partially dissolved fraction was then filtered and dried for 3 h at 80°C. The whole process leading to SMC^{mod} is described on Fig. 1 [8].

Solvolysis reactions were then conducted in a 6 L three-neck reactor equipped with a reflux condenser, a nitrogen inlet and a mechanical PTFE blade stirrer. 385 g of shredded SMC^{mod} were first mixed with 3.5 · 10⁻³ m³ of DETA during 10 min. Stopping the stirring after the moistening of SMC^{mod} allowed to avoid the formation of glass fibres bundles (Fig. 2b). Then the mixture was heated under nitrogen flow until 200°C. After 3 h, the reacting mass was cooled and the product was filtered. The remaining solid presented a heterogeneous aspect composed of white powder and little white patches bonded to fibre and of free white powder (Fig. 2).

3.3. Characterization of modified SMC and composites

The different fractions SMC^{mod} and SMC^{mod}_{solv} were analysed using a FTIR Perkin Elmer spectrometer by ATR technique (Attenuated Total Reflectance).

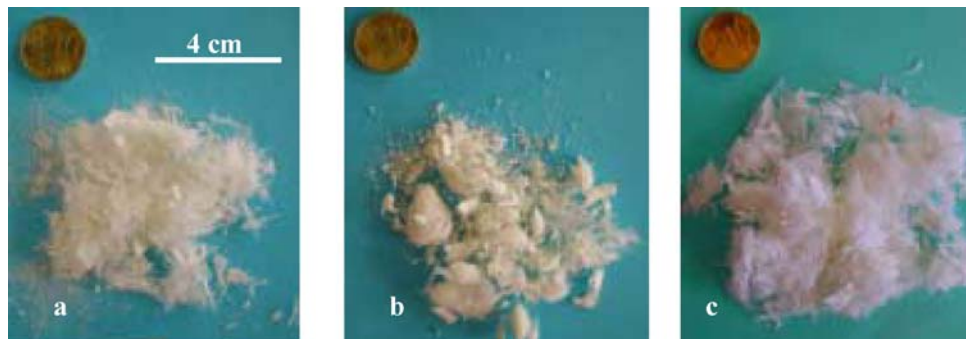


Figure 2 Appearance of the shredded SMC^{mod} before partial solvolysis (a) and after a 3 h solvolysis et 200°C with continuous stirring (b) or without stirring after moistening (c).

The organic fraction was first measured by weight loss after pyrolysis at 625°C for 180 min. CaCO₃ amount was then measured by calcimetry. This technique is based on the measurement of CO₂ volume evolved from the reaction of CaCO₃ with HCl in standard temperature and pressure conditions, leading to the amount of calcium carbonate present in the filler:

$$\%CaCO_3 = \frac{100 \cdot M_{CaCO_3} \cdot V_{CO_2}}{24040 \cdot m_{SMC}} \quad (1)$$

where m_{SMC} is the SMC amount, V_{CO_2} the CO₂ volume evolved and M_{CaCO_3} the molar mass of CaCO₃. Finally, the remaining glass fibre fraction was determined by difference.

Fibre length distribution was determined both before and after composite injection processing for all the recycled fractions (SMC^{mod}, SMC^{mod}_{solv} and T401) and for the commercial short glass fibres after extrusion. The whole sample preparation method has been described on a previous paper [7]. Fibres length distribution was obtained by a semi-automatic images analysis system based on Optimas software. Number average length L_n , length average length L_1 and dispersity D ($(L_1 - L_n)/L_n$) were then calculated using a gaussian model distribution.

High-resolution ¹³C NMR spectra were obtained at two different principal fields (9.4 T–400 MHz and 17.6 T–750 MHz) on Bruker ADVANCE instruments equipped with high speed MAS probeheads (spinning rates of 10 to 14 kHz, aluminium-free zirconia rotors of 2.5 mm diameter) from Orleans (France). Typical acquisition conditions were: 50–60 kHz radio frequency field for ¹H during excitation, CP-MAS and decoupling; 1-s recycle delay with pre-saturation before acquisition, contact times varying from 250 μm up to 3 ms. Spectra were referenced relative to TMS at 0 ppm for ¹³C. All NMR samples were prepared by powdering the SMC material at the granulometry of 200 μm diameter size.

All the fillers were incorporated into polymer using a Clextral BC 21 twin screw extruder (barrel temperature of 200°C, screws speed of 350 min⁻¹). The PP matrix was blended with 5% w/w of a polypropylene grafted maleic anhydride to ensure a good adhesion between matrix and fillers, except a reference composite with virgin glass fibers in which only the PP matrix was present. Injection moulding of specimens was performed using a 95 t SANDRETTO AT. Tensile and Charpy impact tests were performed 72 h after injection moulding. Tensile tests (Young's modulus and yield stress) were carried on using a ZWICK Z010 apparatus according to ISO 527-2 standard. Charpy tests were carried out on unnotched specimens using a ZWICK 5101 (4 J) device according to ISO 179 standard.

4. Results and discussion

The amount of SMC^{mod} and SMC^{mod}_{solv} fillers was fixed at 47% and 42% w/w respectively to obtain about 20% w/w glass fibres content in all the composites. A PP composite containing 20% w/w of commercial glass fibres was used as reference. The T401 composite is prepared similarly as SMC^{mod}. The PP composites are referenced in Table I.

4.1. Characterisation of the SMC^{mod} fraction

The aspect after shredding of the ground SMC before dissolution step is presented on Fig. 3. Observation of



Figure 3 Appearance of shredded SMC.

TABLE I Compositions of the different composites

Composites based on PP/PP _{gma} *	Commercial glass fibres(1)	Mixed process (SMC ^{mod})(2)	Solvolytic process (SMC ^{mod} _{solv})(3)	Commercial ground T401(4)
Fillers amount in composite (wt.%)	20	47	42	42
Overall fibre amount (wt.%)	20	20	20	20

*Except commercial glass fibres where these one were already coated by PP_{gma}, (1) PP20GF_{PP}, (2) PP20GF^{mod}_{SMC} 5PP_{gma}, (3) PP20GF^{mod}_{SMC} solv5PP_{gma}, (4) PP20GF_{T401}5PP_{gma}

TABLE II SMC composition and efficiency according to the recycling process

Composition (w%)	Initial SMC	Pure grinding (first step)	SMC ^{mod}	SMC ^{mod} _{solv}	T401 filler (commercial process)
Unsaturated Polyester	26.0 ± 2.5	22.7 ± 2.5	31.8 ± 2.5	23.7 ± 2.5	22.0 ± 2.5
Calcium carbonate	52.0 ± 2.5	55.0 ± 2.5	25.6 ± 2.5	28.3 ± 2.5	29.0 ± 2.5
Glass fibre	22.0 ± 2.5	22.3 ± 2.5	42.6 ± 2.5	49.0 ± 2.5	42.0 ± 2.5

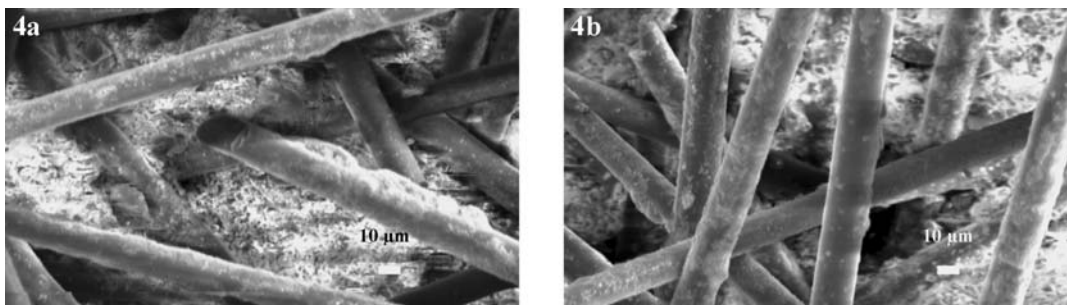
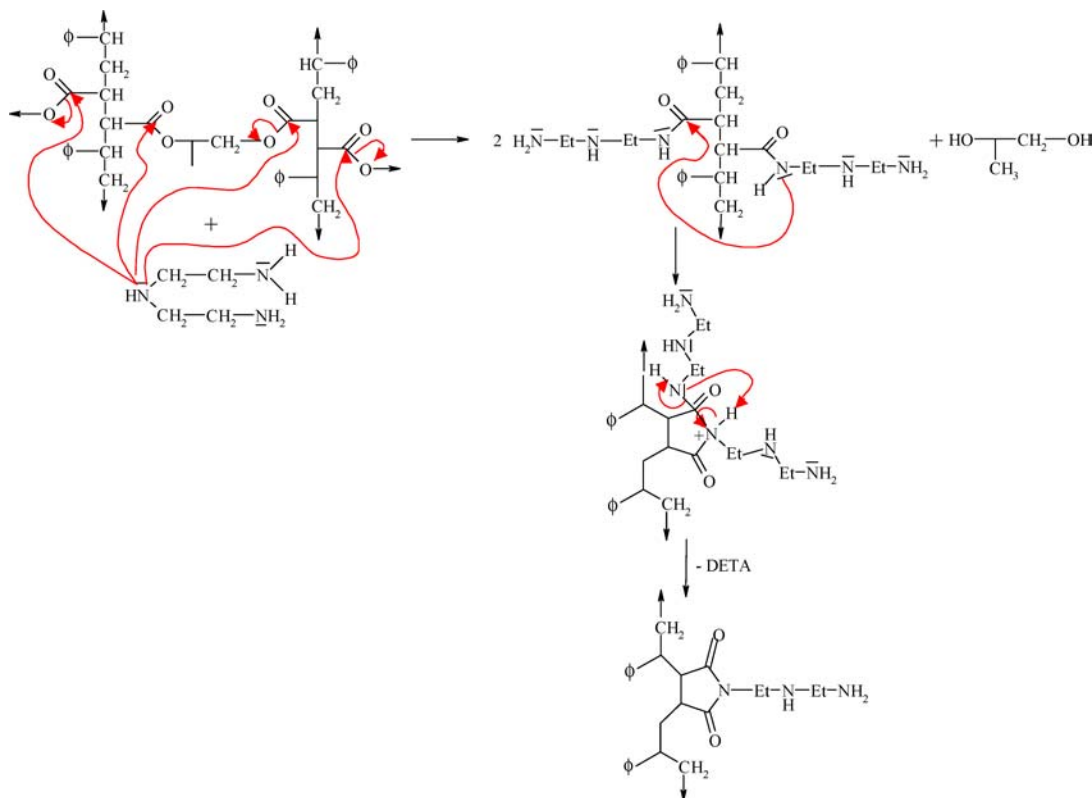


Figure 4 SEM images $\times 100$ of passing through ground (a) SMC and (b) SMC^{mod}.



Scheme 1 Proposed mechanism for the formation of succinimide derived from DETA by reaction between UP and DETA.

comminuted recycle reveals that the recycled particulates are covered by a layer of fine powder, bonded to their surface through electrostatic forces.

The SEM observations performed on SMC and SMC^{mod} fractions are shown on Fig. 4. It can be observed that both fractions are similar and, that most of the glass fibres present have been well separated from the polyester matrix. Nevertheless, this observation reveals also that the recovered glass fractions are heterogeneous since fibres, residual polymer resin and calcium carbonate remain present, either as free powder or in the form of a resin sheath surrounding the fibres.

The compositions of initial SMC and SMC^{mod} fractions are detailed in Table II. The high glass fibre content observed for T401 (42%) is ascribed to the fact that this fraction was a mixture of pure glass fibre waste and SMC

recycled fractions and hence, the fibrous fraction is initially very rich in glass fibres.

SMC^{mod} compared to initial SMC, presents a lower polyester and calcium carbonate fraction. If the UP composition of SMC^{mod} and SMC^{mod}_{solv} are compared, an important decrease in the unsaturated polyester content (-25%) can be noticed, corresponding to the chemical attack of the SMC^{mod} surface during the partial solvolysis.

The average length of glass fibres is presented on Table III. SMC^{mod} clearly shows higher fibre length than T401. The fibre length is moreover too high to be analysed quantitatively by our image analysis procedure [8]. It could be noticed that this initial fibre length is comparable to that of the commercially available short glass fibres used for reinforced thermoplastics.

TABLE III Glass fibre distribution according to the recycling process

	Commercial glass fibres	Initial SMC	Mixed process (SMC ^{mod})	T401 filler (commercial process)
Average length (mm)	4.5**	25–50**	2–10*	0.7***

*Manually determined.

**Commercial data.

***Semi-automatically determined by image analysis according to the above described process.

4.2. Characterisation of the solvolysed SMC^{mod} fraction

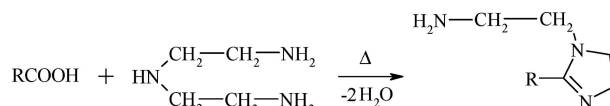
As only a partial chemical attack of the SMC^{mod} is wanted and not a complete degradation of the organic matrix, less severe experimental conditions than these used for the total degradation of the composite have been selected [7]. Consequently, the partial solvolysis reaction was carried out at 200°C (the boiling point of DETA is about 200°C) for 3 h instead of 10 h [7], which is the recommended temperature for a total modification of the organic matrix.

The chemical mechanism of the DETA on the UP matrix, that can be proposed, is presented on Scheme 1.

Concerning the FTIR analysis, all the fractions of the heterogeneous collected product (GF covered with white powder, GF with little white patches and white powder) have been analysed by FTIR spectroscopy.

Fig. 5 presents the ATR FTIR spectra of the SMC^{mod} before and after partial solvolysis by DETA during 3 h at 200°C.

Spectra indicate peaks of styrene (St) moieties at 1600, 1490, 1160, 1030, 905 and 698 cm⁻¹. Moreover, a decrease of the ester peak intensity located at 1730 cm⁻¹ is observed as well as the formation of two new peaks at 1769 cm⁻¹ (low intensity) and 1698 cm⁻¹ (high intensity), both related to imide function and another at 1675 cm⁻¹ related to imidazoline moieties [19]. The presence of these



Scheme 2 Formation of imidazoline from reaction between DETA and fatty acid [16, 20].

imide functions could correspond to the formation of succinimide derived from DETA by reaction between UP and DETA according to Scheme 1.

This last result is in agreement with Winter *et al.* works [6] on the UP solvolysis by MEA that reacts by its amino groups with the diamine derived from the succinic acid.

Furthermore, according to other authors [14, 15], DETA reacts with fatty acids to form also imidazoline at high temperatures [16, 20] (280–300°C) (Scheme 2).

A secondary reaction between ester and DETA, which could be another way to form imidazoline, may occur. A mechanism for this reaction is proposed on Scheme 3.

As regards the CP/MAS ¹³C-NMR spectra of SMC^{mod} and SMC^{mod}_{solv} on Fig. 6, one might suppose that thermoset composites and especially solvolysis or pyrolysis of thermosets would produce a mixture of degradation products so complex that NMR spectroscopy could provide no useful information without prior separation of the individual components. First, the volatile low-molecular-weight

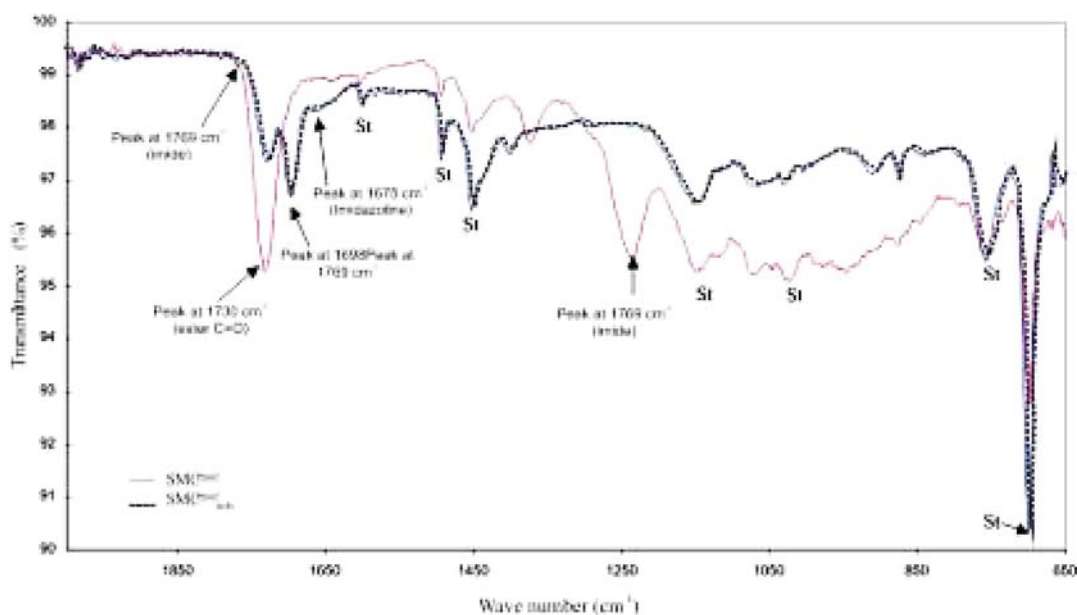
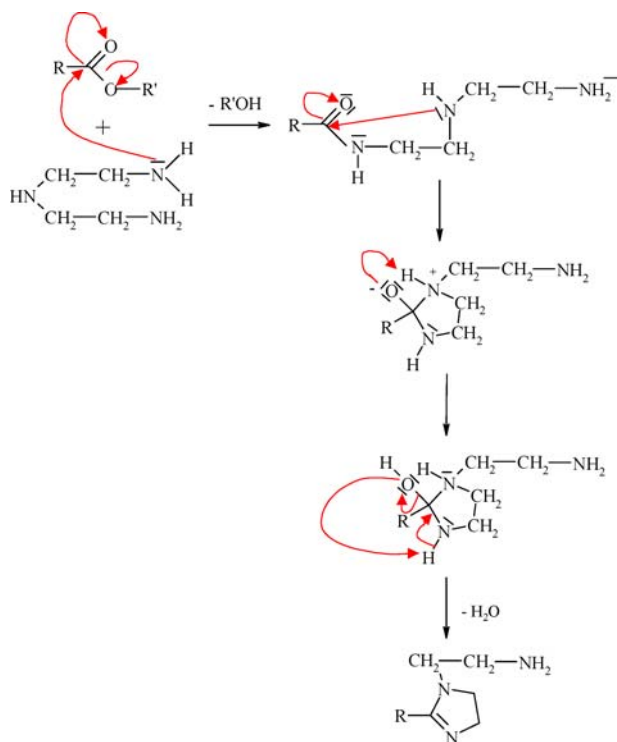


Figure 5 IRTF spectra of the SMC^{mod} and of the SMC^{mod} solvolysed by DETA during 3 h at 200°C.



Scheme 3 Proposed mechanism for the formation of imidazoline by reaction between ester and DETA [19].

fragments, which are expected to exhibit the greatest structural diversity, are driven off in a large part during the partial solvolysis and the remaining small-molecular-weight fragments may be expected to cross polarize with low efficiency because of rapid molecular motions. Thus, the contributions of the large-molecular-weight fragments to the CP/MAS ¹³C-NMR spectra of the degradation products are easier to assign than FTIR spectra. Contributions of ¹³C atoms are recorded separately by NMR but not by IR techniques. Dependence of CP/MAS ¹³C-NMR spectra on the crystallinity of the sample is much less important for IR. Furthermore, the assignments of ¹³C resonances in CP/MAS spectra to specific chemical functional groups can be confirmed by altering the cross-polarization pulse scheme to suppress the resonances of protonated carbons without affecting those of non-protonated carbons [21].

Based on the FTIR results, chain scissions of the SMC^{mod}_{solv} composite were taken into account. Therefore, the assumption of the main degradation mechanism was consistent with ester degradation, the key peaks to examine in ¹³C NMR would be those associated with the ester. The interesting ranges on the spectra are 30–50 ppm (aliphatic groups), 60–80 ppm (alcohol and ether groups), 120–150 ppm (aryl and vinyl groups) and 160–180 ppm (carbonyl groups) [22]. The more intense

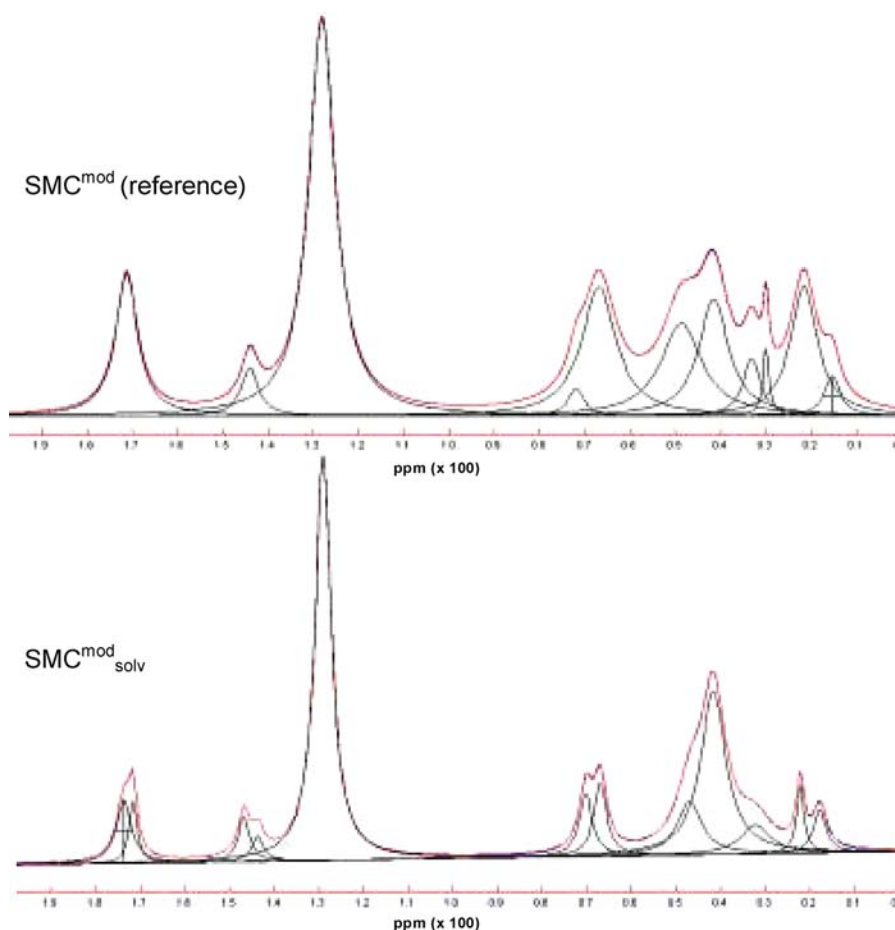


Figure 6 Qualitative ¹³C NMR spectra of the initial and solvolyzed SMC^{mod} and the deconvolution of these spectra.

peak at 128 ppm could correspond to the aryl groups from vinylic cross linkages within the SMC. As regards the initial SMC^{mod} (reference), the most interesting peaks correspond to the tertiary carbon atom adjacent to the ester linkage (32, 41 and 49 ppm). The existence of a possible chemical bonding between SMC^{mod} and DETA can be detected by a change in chemical shift of the carbons within this zone. Actually, as regards the SMC^{mod}_{solv} sample, the enhancement of the carbon peak at 32 ppm, in comparison with the reference SMC^{mod}, and the increase of the peak at 41 ppm with a loss of the intensity of the peak at 49 ppm, could be ascertained as the chemical imidation link. Two peaks at 32 and 41 ppm and the related upfield line broadening suggest that chemical bonding has occurred between DETA and SMC^{mod} ester groups. Moreover, between 60 and 200 ppm, for the chemically treated sample, the decrease of those peaks in relative intensity (68 ppm–145 ppm–171 ppm), indicates that a chemical change has occurred for those carbon atoms. Also, several new peaks appeared, in particular those located at 147 ppm and 174 ppm. The peak at 147 ppm corresponds to alkene moieties, and the peak at 174 ppm corresponds to an amid imide moiety. Whereas the relative intensities of the peaks at 68 and 145 ppm decrease with increasing chemical treatment, the relative intensity of the peak at 70 ppm (alcohol groups) increases with this treatment. Based on this observation, it seems obvious that the ester linkage has been cleaved to form other components, namely alkenes and amid or imide.

The NMR and FTIR data again suggest that the SMC^{mod} is mainly degraded in a similar way than this of ester degradation, giving the imide amid chemical bonding expected. A general decomposition mechanism of the SMC^{mod} is shown in Scheme 4.

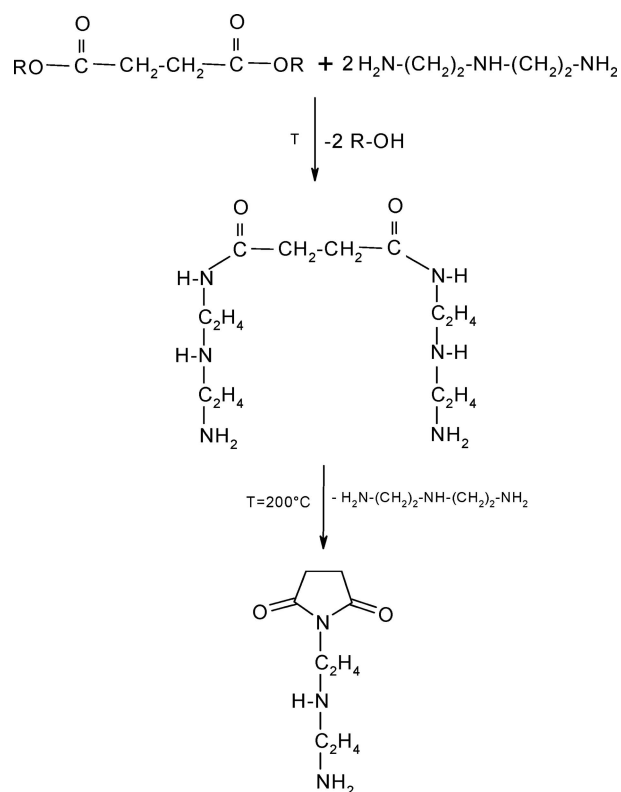
4.3. Composites properties

4.3.1. Characterization of fibres length

The glass fibre length distributions were determined after injection moulding and presented in Table IV.

The glass fibres length distribution is narrower for the recycled materials SMC^{mod} and SMC^{mod}_{solv} in the comparison with fibres in industrial composites. The chemical treatment of the SMC^{mod} does not influence the fibres length. These data seem indicate that the glass fibres seemed not too damaged by the global process, including shredding and dissolution steps.

It is very interesting to notice that long glass fibres could avoid the propagation of cracks which leading to the



Scheme 4 Main chemical mechanism of solvolysis of SMC^{mod} with DETA [6].

failure of the future composite [23]. Glass fibres length distribution and average length have an influence on the mechanical properties of composites, because the fibre ends are particular sites for stress concentration where initiation and propagation of interfacial cracks can occur, leading to tensile failure. The stress transfer between fibre and the matrix is also related to the ability of glass fibres to work as reinforcements. According to Cox's model, the critical fibre length regarding reinforcement is between 200 and 500 μm [24]. Consequently, fibres length distribution, for SMC^{mod} and SMC^{mod}_{solv} obtained, allows to fully reinforce the composite.

4.3.2. Mechanical properties

Elastic modulus, tensile and impact strength of all the polypropylene-based composites are presented on Fig. 7. The error bars show the standard deviation.

SMC^{mod}_{solv} exhibits the better impact properties. This could be explained by the chemical link existing between modified matrix and solvolysed reinforcement. Actually,

TABLE IV Glass fibres distribution after incorporation into PP/PP_{gma} matrix by injection process

Distribution of glass fibre in PP/PP _{gma}	Virgin glass fibres	SMC ^{mod}	SMC ^{mod} _{solv}	T401 filler (industrial process)
Average length in number (μm)	740	410	400	200
Average length in length (μm)	890	430	430	250
Dispersity (%)	20	5	6	25

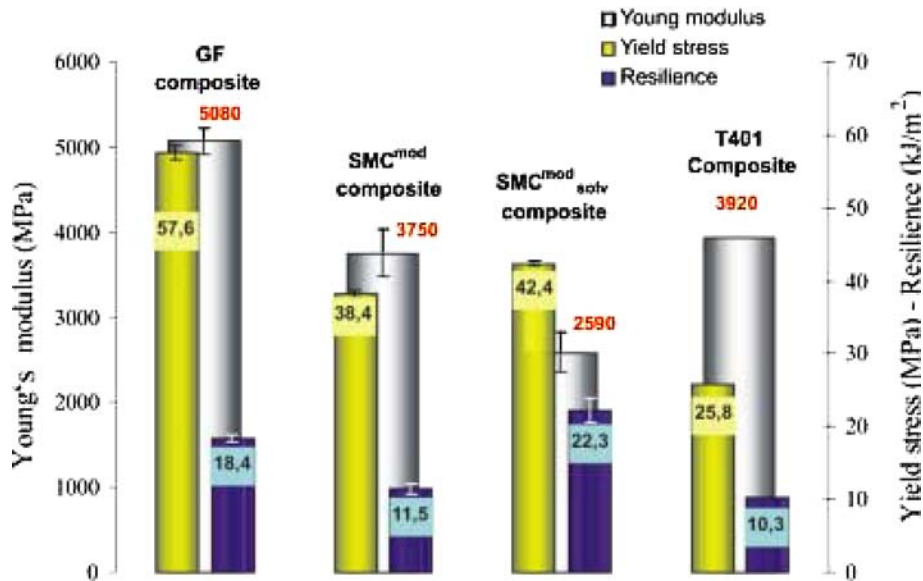


Figure 7 Mechanical properties of polypropylene-polypropylene grafted maleic anhydride based composites with an overall rate of glass fibres of 20% w/w.

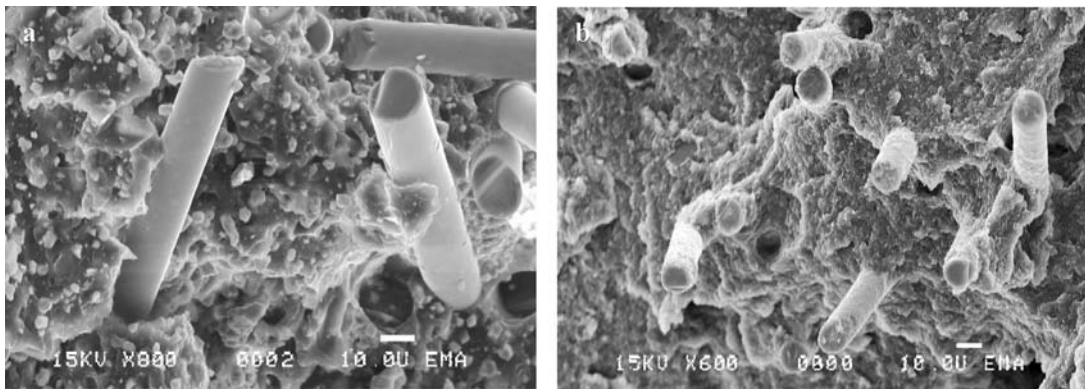
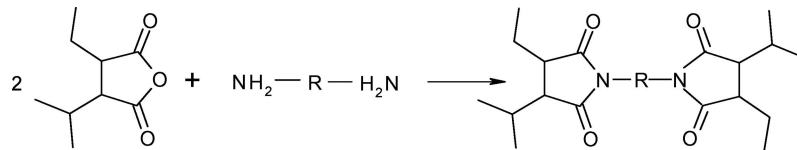


Figure 8 (a) SMC^{mod} fibres composites. (b) SMC^{mod_solv} fibres composites.



Scheme 5 Linkage reaction between matrix and reinforcing fillers.

Fig. 8 shows the difference of adhesion between matrix and SMC^{mod} and SMC^{mod_solv} composites.

SMC^{mod_solv} fibres (Fig. 8) are strongly embedded the matrix, conversely to SMC^{mod} fibres where smooth fibres can be observed.

Therefore, SMC^{mod_solv} should reduce the local stress concentration, which is not the case for the unmodified SMC composites (T401 and SMC^{mod}) [25].

An increase in the tensile strength is observed on the Fig. 7 for SMC^{mod_solv} composite in comparison with SMC^{mod} and T401 fibres. Such improvement ascribes to the presence of surface agent grafted on the SMC^{mod_solv} fillers and on the PP_{gma} present in the polymer matrix; the PP function-

alized matrix could then react/interact readily with amine functions present on the polyester bulks from SMC^{mod_solv}. A thoroughly succinimide formation created between reinforcing filler and modified matrix can result, entailing an increase of the interface and an improvement of the intrinsic mechanical properties. The linkage reaction is described by the following chemical equation (Scheme 5) [27].

Moreover, improvement in properties may also be attributed to adhesion enhancement between grafted PP and glass fibres slightly embedded in residual polyester functionalised by partial solvolysis. The same imidation reaction can occur between the amines on the glass fibres and

the anhydrides from modified polypropylene matrix. To that may be added a poor adhesion between anhydrides and calcium carbonate present in the final composite based $\text{SMC}_{\text{solv}}^{\text{mod}}$, because of a low amount of ionic interactions in the SMC^{mod} .

A strong improvement for $\text{SMC}_{\text{solv}}^{\text{mod}}$ composite properties is observed in comparison with these of the industrial T401 composite. Chemical adhesion seems to be responsible of this rise, since anhydride functions are not present on the T401 polyester surface.

Compared to the PP reinforced with commercial glass fibres, $\text{SMC}_{\text{solv}}^{\text{mod}}$ composite present lower mechanical properties. This can be ascribed to a strong degradation of the polyester network of SMC^{mod} due to a too drastic chemical attack of the ester link by the DETA. Furthermore, a plasticization could be induced by this chemical interfacial agent that could be present of the matrix in excess. This can be confirmed, according to the infrared spectrum, by the presence of a strong and large peak at 1700 cm^{-1} resulting from the amid imide formation and by the decrease of the ester peak at 1730 cm^{-1} .

5. Conclusion

A partial solvolysis recycling process has been developed aiming to maximize mechanical properties of reinforcing fraction of SMC waste/PP-PP grafted maleic anhydride (PP_{gma}) composites.

At first, SMC waste is shredded and an increase of the reinforcing fraction is achieved by dissolving the calcium carbonate. Secondly, this fraction (SMC^{mod}) is functionalised by a interfacial chemical agent (triamine DETA) to modify its surface ($\text{SMC}_{\text{solv}}^{\text{mod}}$). This entails a chemical degradation by partial solvolysis, which is found to be consistent with ester modification mechanisms leading to an increase in the interfacial adhesion. As a matter of fact, the labile ester linkage is cleaved at 200°C during 3 h, causing a breakdown of the polymer network leading to imide functions (succinimide).

Actually, the present experimental results have confirmed earlier works [26], reporting on the one hand that a reaction between anhydride and amine functions and, on the other hand, ester and amine functions could succeed to create a chemical bonding at the solid interface between reinforcing filler/interfacial agent/matrix.

It was also highlighted that the chemical effects of compatibilizers and the processing conditions are connected. Moreover, it was shown that a link is formed between SMC^{mod} and DETA side and between maleic anhydride from $\text{PP-PP}_{\text{gma}}$ and $\text{SMC}_{\text{solv}}^{\text{mod}}$ created by the amine end-of-chains. An increase of the mechanical properties of the final composite is thereby resulting. These interfacial reactions have been characterized by infrared spectroscopy, microscopy and NMR analysis that allowed ascertaining amid or imide linkage. Further developments concern the optimisation of the degradation of SMC polyester process before incorporation in $\text{PP-PP}_{\text{gma}}$ to avoid loss of stiffness for the $\text{SMC}_{\text{solv}}^{\text{mod}}$ composites.

Acknowledgment

The authors would like to thank the C.R.M.H.T.—C.N.R.S. UPR 4212 of Orléans La Source (France), and more particularly, Dr. Dominique Massiot and Dr. Pierre Florian, for their support and availability concerning the use of the different NMR devices and the studies and interpretations of the CP/MAS ^{13}C and ^1H -NMR spectra. The authors would want also to express their gratitude to Dr. M. Bartholin from the L.M.O.P.S.—C.N.R.S. UMR 5041 and to Mr. Dessalces from the S.C.A.—C.N.R.S. UPR 59, for their help about FTIR characterization of imidazoline.

References

1. M. LE TOULLEC, *Industrie et Techniques* **61** (1995) 756.
2. J. N. REYGROBELLET, J. M. LOPEZ-CUESTA and A. CRESPIY, "Conference of Composite Materials" (ICCM 12, Paris, 1999).
3. J. N. REYGROBELLET, PhD Thesis, Université Montpellier II, France (2000).
4. C. E. KOUPARITSAS, C. N. KARTALIS, P. C. VARELIDIS, C. J. TSENOGLOU and C. D. PAPASPYRIDES, *Polym. Comp.* **23**(4) (2002) 682.
5. C. E. BREEM and P. R. HORNSBY, *J. Mater. Sci.* **36** (2001) 2965.
6. H. WINTER, H. A. M. MOSTERT and G. PAAS, *J. Appl. Polym. Sci.* **57** (1995) 1409.
7. M. VALLÉE, G. TERSAC, N. DESTAIS-ORVOEN and G. DURAND, *Ind. Eng. Chem. Res.* **43** (2004) 317.
8. D. PERRIN, A. BERGERET, E. LEROY, L. CLERC and J.-M. LOPEZ-CUESTA, *Compos. Sci. Technology*, in progress (2005).
9. G. TESORO and Y. WU, *Adv. Polym. Techn.* **12**(2) (1993) 185.
10. S. KUBOTA, A. ITO and H. MIYAMOTO, US Patent 5776989 (1998).
11. T. A. TUFTS, C. C. TSAI and S. HUPP, WO Patent 94/25517 (1994).
12. C. M. TAI, T. GOTANDA and K. TSUDA, European Patent 1 085 044 (2001).
13. H. TANAZAWA, T. HIROHATA and R. NISHIMURA, US Patent 5,733,942 (1998).
14. "Unsaturated polyesters, Encyclopedia of Polym. Sci. and Technology" (Interscience Publishers, 1969) Vol. 11.
15. S. ZHEN, L. ZHENG and B. YINJUAN, *Science in China (Series B)* **43**(1) (2000) 69.
16. H. S. MANNHEIMER, US Patent 3,408,361 (1967).
17. D. PERRIN, E. LEROY, L. CLERC, A. BERGERET and J.-M. LOPEZ-CUESTA, *Macromolecular Symposia* **221** (2005) 227.
18. J. R. KENNERLY, R. M. KELLY, N. J. FENWICK, S. J. PICKERING and C. D. RUDD, *Composites: Part A* **29** (1998) 839.
19. L. J. BELLAMY, "The Infrared Spectra of Complex Molecules" (Chapman et Hall, 1995).
20. MARK, BIKALES, OVERBERGER and MENGES, *Encyclopedia Polym. Sci. Eng.* **11**, 476.
21. T. P. HUIJGEN, H. ANGAD GAUR, T. L. WEEDING, L. W. JENNESKENS, H. E. C. SCHUURS, W. G. B. HUYSMANS and W. S. VEEMAN, *Macromolecules* **23** (1990) 3063.
22. J.-S. CHEN, C. K. OBER and M. D. POLIKS, *Polymer* **43** (2001) 131.
23. A. G. PEDROSO, L. H. I. MEI, J. A. M. AGNELLI and D. S. ROSA, *Polym. Testing* **18** (1999) 211.
24. H. L. COX, *J. Appl. Phys.* **3** (1952) 72.
25. J. HARTIKAINEN, P. HINE, J. S. SZABO, M. LINDNER, T. HARMIA, R. A. DUCKETT and K. FRIEDRICH, *Comp. Sci. Techn.* **65** (2005) 257.
26. J. ROEDER, R. V. B. OLIVEIRA, M. C. GONÇALVES, V. SOLDI and A. T. N. PIRES, *Polym. Testing* **21** (2002) 815.