



HAL
open science

Low Energy and low fluence helium implantations in tungsten: Molecular dynamics simulations and experiments

Lucile Pentecoste, Pascal Brault, Anne-Lise Thomann, Pierre Desgardin, Thomas Lecas, Tayeb Belhabib, Marie-France Barthe, Thierry Sauvage

► To cite this version:

Lucile Pentecoste, Pascal Brault, Anne-Lise Thomann, Pierre Desgardin, Thomas Lecas, et al.. Low Energy and low fluence helium implantations in tungsten: Molecular dynamics simulations and experiments. *Journal of Nuclear Materials*, 2016, 470, pp.44-54. 10.1016/j.jnucmat.2015.12.017. hal-01243223

HAL Id: hal-01243223

<https://hal.science/hal-01243223>

Submitted on 14 Dec 2015

HAL is a multi-disciplinary open access archive for the deposit and dissemination of scientific research documents, whether they are published or not. The documents may come from teaching and research institutions in France or abroad, or from public or private research centers.

L'archive ouverte pluridisciplinaire **HAL**, est destinée au dépôt et à la diffusion de documents scientifiques de niveau recherche, publiés ou non, émanant des établissements d'enseignement et de recherche français ou étrangers, des laboratoires publics ou privés.

**Low Energy and low fluence helium implantations in tungsten:
Molecular dynamics simulations and experiments**

Authors : L. Pentecoste^{1,*}, P. Brault^{1,*}, A.-L. Thomann^{1,*}, P. Desgardin², T. Lecas¹, T. Belhabib², M.-F. Barthe², T. Sauvage²

¹ GREMI, UMR7344 CNRS Université d'Orléans BP6744, 45067 Orléans Cedex 2, France

² CEMHTI, UPR3079 CNRS, 1D avenue de la Recherche Scientifique, 45071 Orléans Cedex 2, France

Abstract:

300 eV Helium implantation process into tungsten at 300 K has been studied with molecular dynamic simulations (MD). Predicted retention doses were compared to that obtained from experiments performed in equivalent conditions. A saturation phenomenon of the helium retention was evidenced for a number of impinging He atoms and a retention dose similar in both, experiments and simulations. From MD simulations it is learnt that observed Helium diffusion, formation and coalescence of clusters are the phenomena leading to the flaking of the substrate. These processes could explain the saturation of the Helium retention observed experimentally at low energies.

Keywords : Molecular Dynamics, Helium retention, plasma-wall interactions

Corresponding authors: pascal.brault@univ-orleans.fr; anne-lise.thomann@univ-orleans.fr

1. Introduction

Due to its low sputtering yield and high melting point, tungsten is the material chosen to compose the first wall of the divertor of ITER fusion reactor. This part of the chamber will face the most severe conditions of the plasma, such as high fluxes of light particles with a wide range of energies and high heat loads¹⁻³. Studies on plasma material interactions are currently carried out to anticipate the evolution of this metal while exposed to fusion plasma. Several reactors are developed to investigate the interactions of such fusion plasma on W such as Nagdis-I and II in Nagoya or Pisces in San Diego^{4,5}.

Gas implantation, diffusion and retention into metals are well-explored phenomena^{6,7}. Experimental studies have evidenced that He ion fluxes on W substrates lead to various surface morphology changes such as blistering, fuzz formation and even flaking⁸⁻¹¹. Those features appearance is strongly dependent on the flux and incident energy of the ions; it also depends on the substrate temperature during the implantation process. At high energies, keV to MeV, mean penetration depths are high (100 nm to microns) and defects induced by elastic and inelastic collisions lead to the formation of damages in the substrates. However at low ion energies (below W displacement thresholds: 90 eV transferred from the impinging ion) the formation of the characteristic damage features is still under investigation.

Experiments performed in Nagdis-II by Nishijima *et al*⁸ showed damages as holes appeared for high fluxes ($10^{19} \text{ cm}^{-2}\text{s}^{-1}$) and high doses or number of impinging atoms (10^{23} cm^{-2}) for energies ranging from 5 to 30 eV at high temperature (1300 to 2950 K). It was also reported by Lee *et al*¹² that a limited number of He could remain in the material for energies below W displacement threshold for implantations performed with fluxes ranging from 10^{14}

to $10^{15} \text{ cm}^{-2} \cdot \text{s}^{-1}$ and doses from 10^{17} to 10^{19} cm^{-2} . Simulations using molecular dynamics were also performed to study the phenomena involved in the implantation process at low energies. Henriksson et al. studied the behaviour of helium with doses below 10^{14} cm^{-2} and with energies varying from 50 to 200 eV at 0 and 300 K¹³. Li et al. investigated implantations of 10^{15} cm^{-2} impinging helium ions on W at 200 eV at temperatures from 300 to 1500 K^{14,15}. Both observed formation of growing and exploding clusters which liberate their He content to the surface. In the case of slightly higher energies (300 eV to 1 keV), the mean penetration of the He is observed to be deeper and no “cluster rupture” was identified due to simulations stopped too early in the course of He interactions¹⁵.

In the present article, the objective is to describe the phenomena observed during the simulation of implantation process carried out at doses ranging from 10^{14} to 10^{17} cm^{-2} and with a kinetic energy of 300 eV at a temperature of 300 K. the simulations were performed by molecular dynamics and SRIM¹⁶ calculations. MD simulations initial conditions are chosen to closely fit with experiments. The aim is to explain the saturation of the retained He atom number which does not occur because of the “cluster ruptures” but is however evidenced for implantation experiments performed at energies below W displacement threshold. Then after a review of the details of the simulation and experimental methods, the MD simulation and experimental results are discussed and compared.

2. Model and Experiments

2.1. Model, Calculations: starting parameters and data treatment

To investigate the phenomena occurring during the implantation of Helium into the tungsten, molecular dynamic simulations are carried out on an Alineos quadriprocessor 8 cores high performance computer using LAMMPS¹⁷. Besides, the SRIM code, which is widely referred to in ion/material interaction studies, is used in addition to compare the statistics of the resulting implanted atom concentration and depth profiles.

A (100) body-centred cubic tungsten crystal box consisting of 17 x 17 x 204 unit cells is built, for which dimensions are then 53.8 x 53.8 x 645.7 Å. Periodic boundaries conditions are set in the x [100] and y [010] directions, and free motion is allowed along z [001]. The temperature of the substrate is set to 300 K, thus matching the room temperature experiments. The bottom of the box is composed of a fixed layer of 6 unit cells (20.5 Å) which mimics the unperturbed bulk. The rest of the W atoms are maintained at the temperature 300 K by the mean of a Berendsen thermostat¹⁸. The thermostat is used because the fluxes of impinging atoms used in MD simulations are unphysically high as compared to the experiments in order to reduce the large calculation times and properly accounting He interactions with W and already He present in W. Then over a set time, velocities of the W atoms are re-evaluated and brought back to values matching the initially set global temperature of the substrate. The substrate atom W current velocities are modified using the multiplicative coefficient χ :

$$\chi = \left(1 + \frac{dt}{\tau} \left(\frac{T_s}{T_k} - 1 \right) \right)^{\frac{1}{2}}.$$

Where dt is the integration timestep (here 0.1 fs), T_s is the targeted temperature, T_k is the current temperature and τ is the time needed for reaching the targeted temperature T_s .

This thermostat allows proper energy relaxation of the substrate for mimicking energy dissipation in the experiment on a reasonable time scale: it is set here to 1 ps, a value consistent with a model of electron-phonon coupling^{19,20} that allows estimation of the relaxation time τ by the formula:

$$\tau = \frac{2m_e \kappa \varepsilon_F}{\Theta_D T_e L n e^2 k_B Z}$$

Θ_D is the surface Debye temperature, T_s the substrate temperature, L the Lorentz number, n the electron density, e the electron charge, k_B the Boltzmann constant, Z the valence, m_e the electron mass, κ the thermal conductivity, ε_F the Fermi energy and T_k is the kinetic temperature. For W, $\tau = 1$ ps and is used as the relaxation time of the Berendsen thermostat.

Substrate thickness is chosen in order to limit to 0.5% the implanted He atoms crossing the substrate through the fixed W atoms layer. This allows observing all the implanted He atoms, their localization and surrounding, considering the channelled atoms as well. Also, the high number of thermostated W atoms combined with the energy dissipation handled by the thermostat helps keeping the desired temperature of the substrate at 300 K such as in the experiments. Moreover the thickness is chosen in order to keep unperturbed thermostated layers at the substrate bottom and so observe a smooth transition toward the fixed bottom layers. Thus none of the perturbations of the W lattice are missing.

Helium ions are treated as atoms, as they are neutralized at the W surface, so classical MD simulations are then applicable. He atoms are injected one by one and in a direction normal to the surface from a randomly chosen position above the box. This allows avoiding any interaction before reaching the substrate's surface. The frequency of the helium atom injection is set between 2.5 and 5 at.ps⁻¹. Such impingement frequency allows no lateral interaction between induced perturbations in the W crystal during the dissipation time, due

to the large enough substrate width. The kinetic energy of the impinging He is set to be 300 eV. The lattice displacement threshold for a W atom is of 90 eV, and the maximum energy transferred from a He atom to a W atom is 25 eV when the He collides with an energy of 300 eV. This value is obtained from the elastic collision energy transfer formula: $E_{tr} = E_i * 4m_1m_2 / (m_1+m_2)^2$. The number of helium atoms impinging the W surface ranges from 2000 to 10000 for a surface of $53.8 \times 53.8 \text{ \AA}^2$. It corresponds to the experiment doses ranging from 10^{14} to 10^{17} cm^{-2} .

Handling molecular dynamics only requires the knowledge of inter-atomic potentials and a set of initial conditions. We use the Juslin and Wirth potentials²¹: W-W interactions are described by a modified Ackland-Therford potential and W-He interactions are modelled from DFT study. Finally, He-He interactions in the substrate are described by Beck's potential²², which would allow He cluster growth.

Analysis of He retention rate, of snapshots during implantation simulations and of implanted He atom depth profiles will give insights into the interaction dynamics of the He with W. SRIM calculations are also carried out for determining retention rates and depth profiles using SRIM 2013 with 2008 stopping power parameters^{16,23}. SRIM software uses Binary Collision Approximation and is commonly used in simulating implantation processes. It considers an amorphous substrate with a density matching the W structure (19.3 g cm^{-3}) and ignores either the interaction between He atoms or effect of the accumulation in the substrate. Moreover SRIM calculations do not account for recombination of interstitials with the vacancies, nor for defect clustering and irradiation-induced amorphization. Thus comparison with MD simulations, where these effects are considered, would allow to highlight their role on the retention of He in W.

2.2. Experiments

Polycrystalline tungsten samples are 7x7x0.3 mm pieces of 99.95% purity. The samples were mechanically polished using diamond pastes with grain size ranging from 6 down to 0.1 μm . They were then annealed under high vacuum (10^{-7} to 10^{-6} mbar) and at high temperature (1600 °C) for one hour. This annealing removes the polishing induced defects and reveals the polycrystalline structure of the substrates in the near surface region as observed in the figure 1. The most important feature is the large grain size minimizing grain boundaries size obtained after annealing.

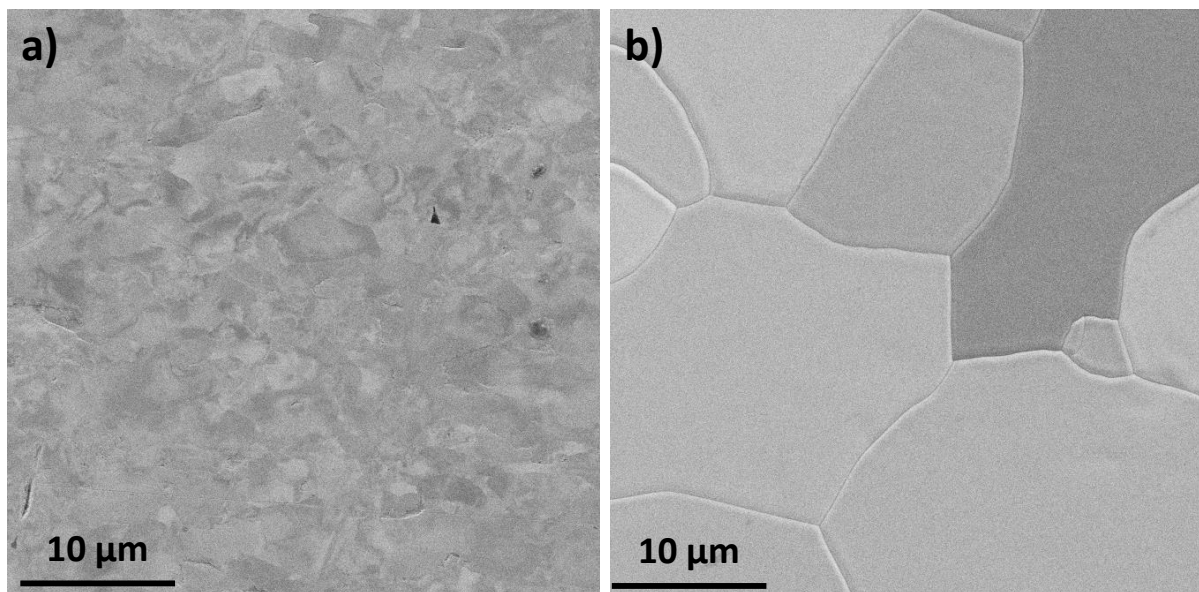


Figure 1: SEM images of the polished W samples surfaces magnified 5000 times (a) prior and (b) after 1600°C annealing.

A dedicated Radio-Frequency Inductively Coupled Plasma source was developed at the GREMI to perform ^3He implantations. The plasma source is composed of a quartz tube surrounded by a copper coil in which flows the RF current lighting up the plasma and is connected to a diffusion chamber in which is located the -300 V biased substrate holder. He plasma lights on at a pressure of 10^{-3} mbar and expands towards the diffusion chamber. The substrates are exposed to He ions with a kinetic energy of 300 ± 20 eV with fluxes ranging

from 10^{11} to 10^{14} $\text{cm}^{-2}\cdot\text{s}^{-1}$. Implantations are performed at 300 K for various durations to obtain a range of ion impinging number from 10^{14} cm^{-2} to 10^{17} cm^{-2} . The ^3He isotope was chosen instead of ^4He because it can be quantified using the Nuclear Reaction Analysis technique (NRA).

The total amount of ^3He retained in the samples is measured by NRA in a dedicated apparatus DIADDEM at the CEMHTI²⁴ laboratory, Orléans.

The nuclear reaction used to quantify the He content is $^3\text{He}(d,^1\text{H})\alpha$ ²⁵⁻²⁸. A 900 keV deuterium beam is used to create nuclear reactions with ^3He atoms present in the W substrate. The nuclear reaction products are an ^4He (α particle) and a ^1H (proton) with energies of 2-3 and 15 MeV, respectively. The concentration of retained ^3He is determined by counting the emitted protons for a given deuterium beam charge. The total proton number is normalized by the beam charge and compared to the one measured with the same conditions in a standard sample containing 10^{16} ^3He cm^{-2} . The ^3He concentration is then determined using a simple proportionality relation.

Even if MD simulations are concerned by ^4He , the mass difference between the two isotopes $^3\text{He}/^4\text{He}$ is not expected to induce a variation in the defects formed into the tungsten lattice. The maximum energy transferred by a ^3He atom (19 eV) remains still below the displacement threshold of a lattice W atom. J. Amano *et al*²⁹ determined experimentally using FIM technique the diffusion coefficients for both isotopes and concluded there was no strong effect of the mass on the enthalpy of migration and only a difference less than 15% in the diffusion coefficient. Thus, we consider that both isotopes have the same effects on W substrate when implanted and that the comparison between MD and NRA results is possible.

3. Results and Discussions

3.1. Retention rate

MD simulation shows a decrease of the He retention rate when increasing the He atom number. This is different from SRIM calculations which lead to a constant retention rate (Table1).

Table 1: MD and SRIM results for the retention rates of He ions incident on W normal to the surface.

| Number of He | Retention rate | |
|-----------------------------|----------------|-------------------|
| | MD Simulations | SRIM calculations |
| 2000 | 0.45 | 0.560 |
| 4000 | 0.430 | 0.56 |
| 5000 | 0.38 | 0.56 |
| 9971 | 0.2 | - |
| 10000 (2x larger substrate) | 0.48 | 0.56 |

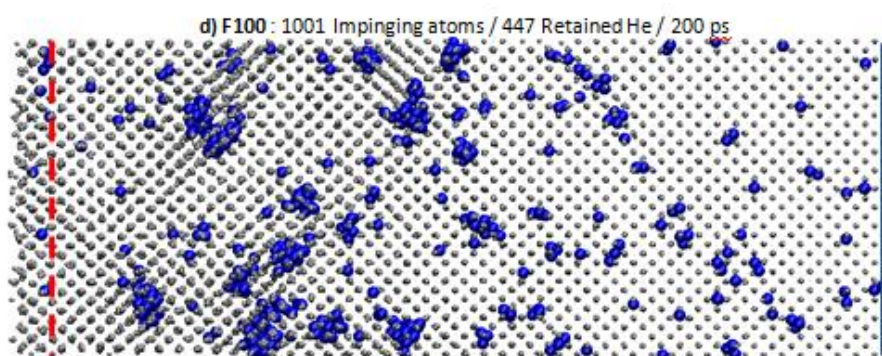
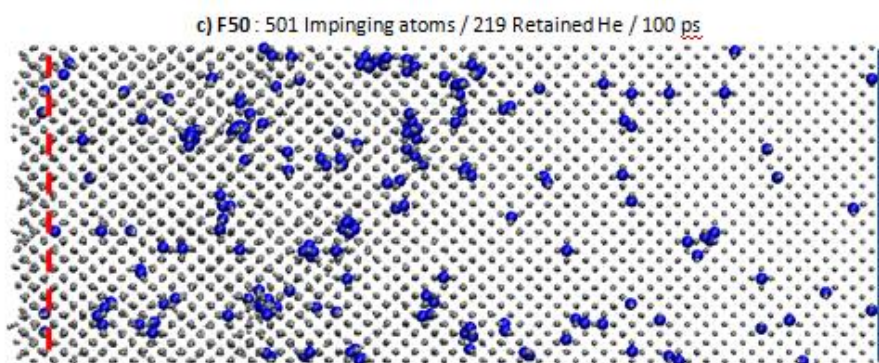
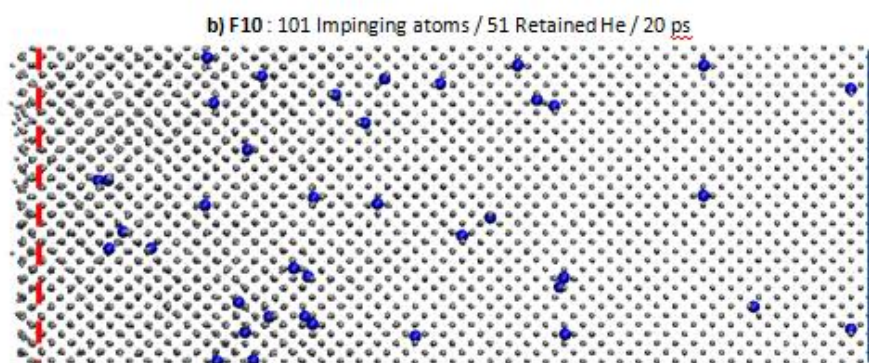
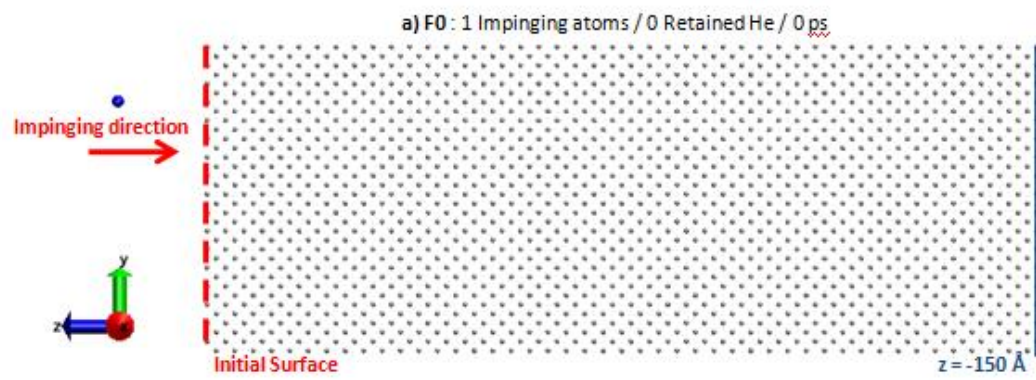
Beyond the nature of interactions considered in each code, an important difference between MD and SRIM calculations lies in the fact that each SRIM impact is on unperturbed amorphous material without any dose effect. Conversely, MD simulations consider helium accumulation under the substrate surface. Thus, it appears to be an important parameter impacting the retention rate when increasing the incident He atoms number due to He-He and He-W interactions leading to a modified W lattice. Henriksson et al. ¹³ reported such a comparison between MD and SRIM. They observed such a large difference, for low energy implantations, which is decreasing when impinging atom energy reached 1 keV. The SRIM code is known as a powerful tool in the case of high energy implantations as it is based on binary collision approximations. However those interactions are less important in the case of

low energy implantations where many body interactions come into play with moving atoms. The difference found between MD and SRIM highlights the limitation of SRIM code for the low kinetic energies and shows the importance of considering relevant many-body interactions.

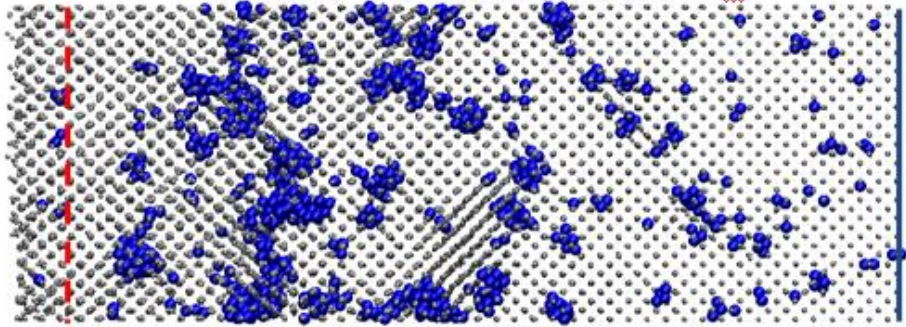
3.2. Implantation process

Snapshots of the MD simulations are presented in figure 2a to 2l. It displays the evolution of the substrate, the formation of He clusters, growing and forming bubbles.

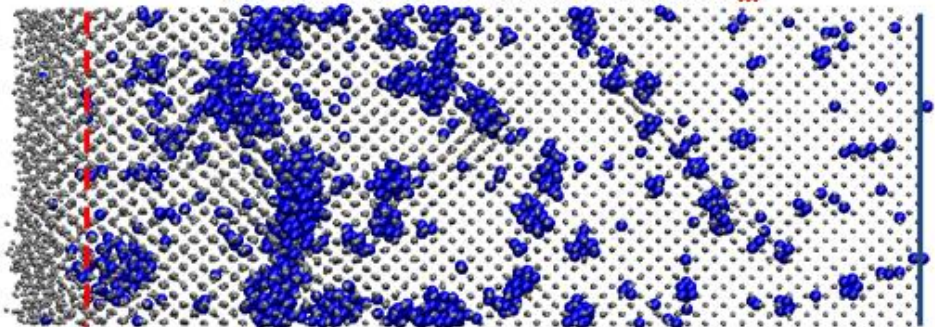
The vertical dotted line gives the initial $z=0$ position of the W surface. When increasing injection of He atoms, swelling of the surface is observed and thus the outermost W surface is evolving towards higher z values. The bottom of the substrate is truncated at a depth of 150 Å for clarity, but extends to 645 Å for MD simulations.



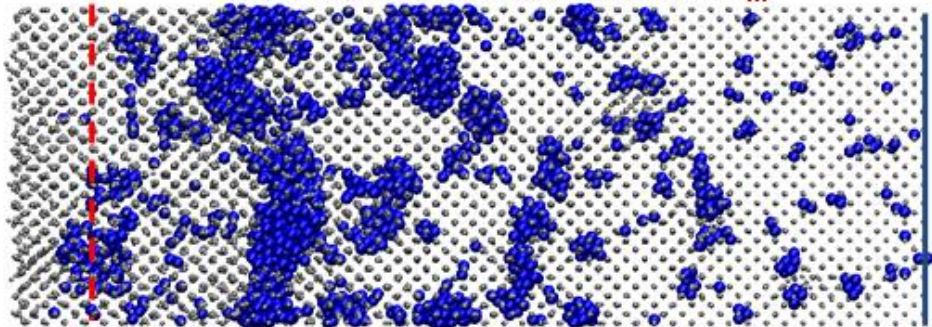
e) F200 : 2001 Impinging atoms / 901 Retained He / 400 ps



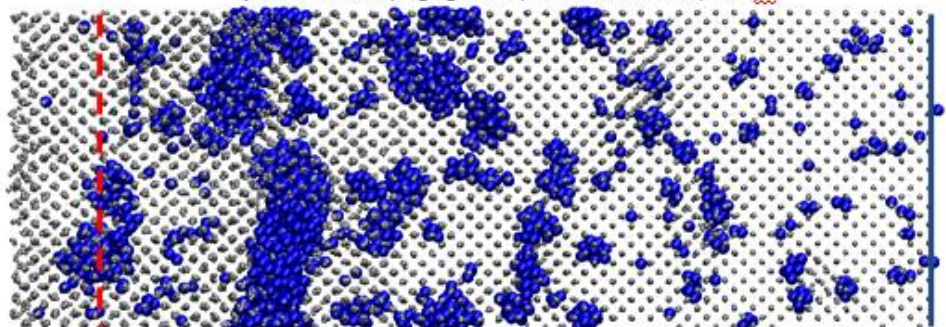
f) F300 : 3001 Impinging atoms / 1293 Retained He / 600 ps



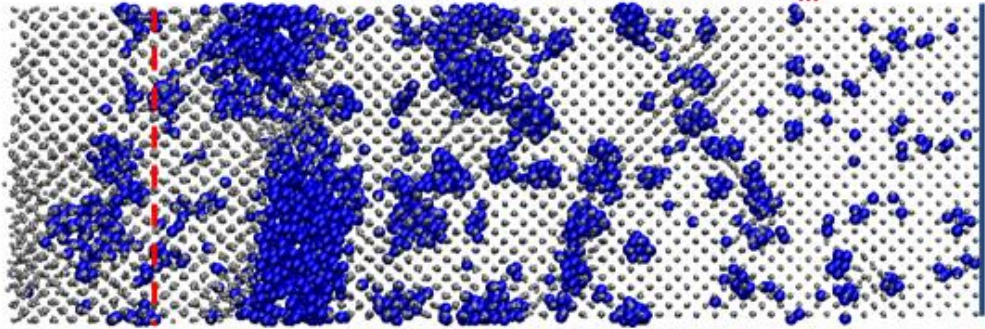
g) F400 : 4001 Impinging atoms / 1714 Retained He / 800 ps



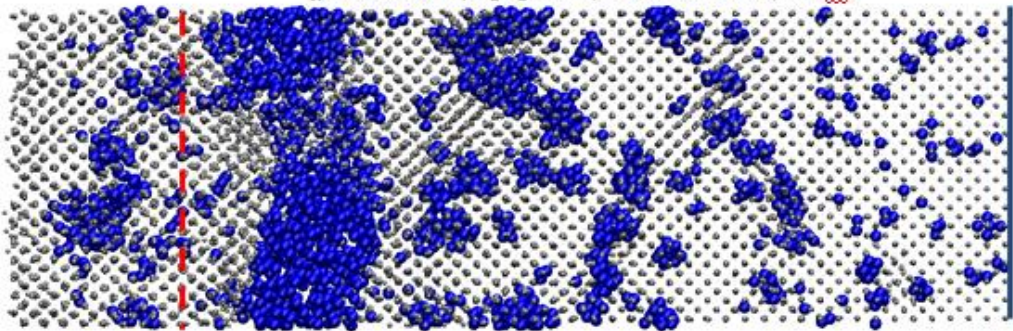
h) F425 : 4251 Impinging atoms / 1825 Retained He / 850 ps



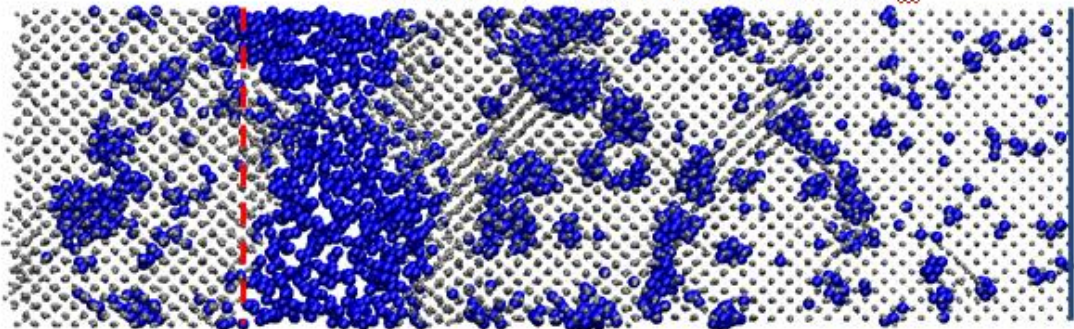
i) F450 : 4501 Impinging atoms / 1955 Retained He / 900 ps



j) F455 : 4551 Impinging atoms / 1984 Retained He / 910 ps



k) F460 : 4601 Impinging atoms / Substrate Rupture / 920 ps



l) F465 : 4651 Impinging atoms / New surface defined / 930 ps

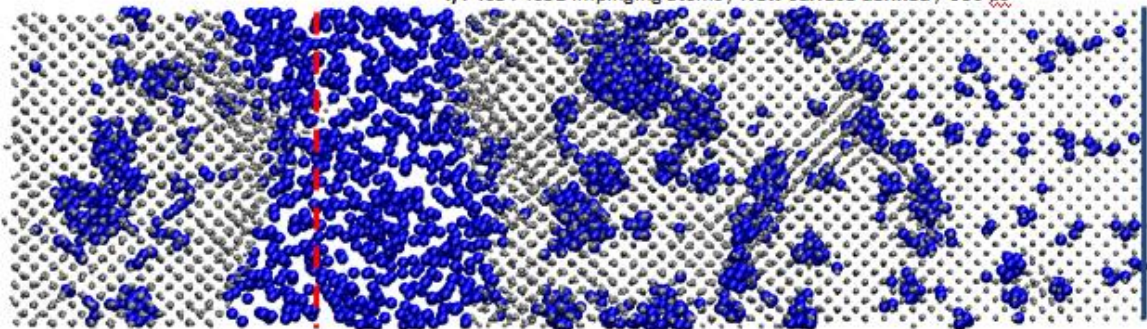


Figure 2: Snapshots of the implantation process with 9971 total impinging He atoms at 300 eV and at 300 K. The W atoms are figured with small dots and He atoms with large balls for clarity. (a) The substrate before any impinging atoms reaches it. (b-e) Helium atoms diffuse and form clusters, the substrate surface moves toward higher z. (f-j) clusters number and size grow with a preferential zone (B) at the mean penetration depth of the Helium atoms. (k-l) Clusters in the intermediate zone (B) coalesce which leads to the rupture of the substrate in two parts: the flaking.

At the beginning of the implantation process, helium atoms slow down at various depths and diffuse in the lattice of the substrate (Figure 2b). Early after the beginning, small He cluster start to form and they do not diffuse anymore when they have a size greater than 6 He atoms, in agreement with previous studies.^{30,31} They behave as traps for new incoming He atoms (figure 2 a-d). Two typical trajectories are presented in figures 3a and b. In both cases the mobility of the growing clusters is reduced as soon they reach a size of 3 He atoms.

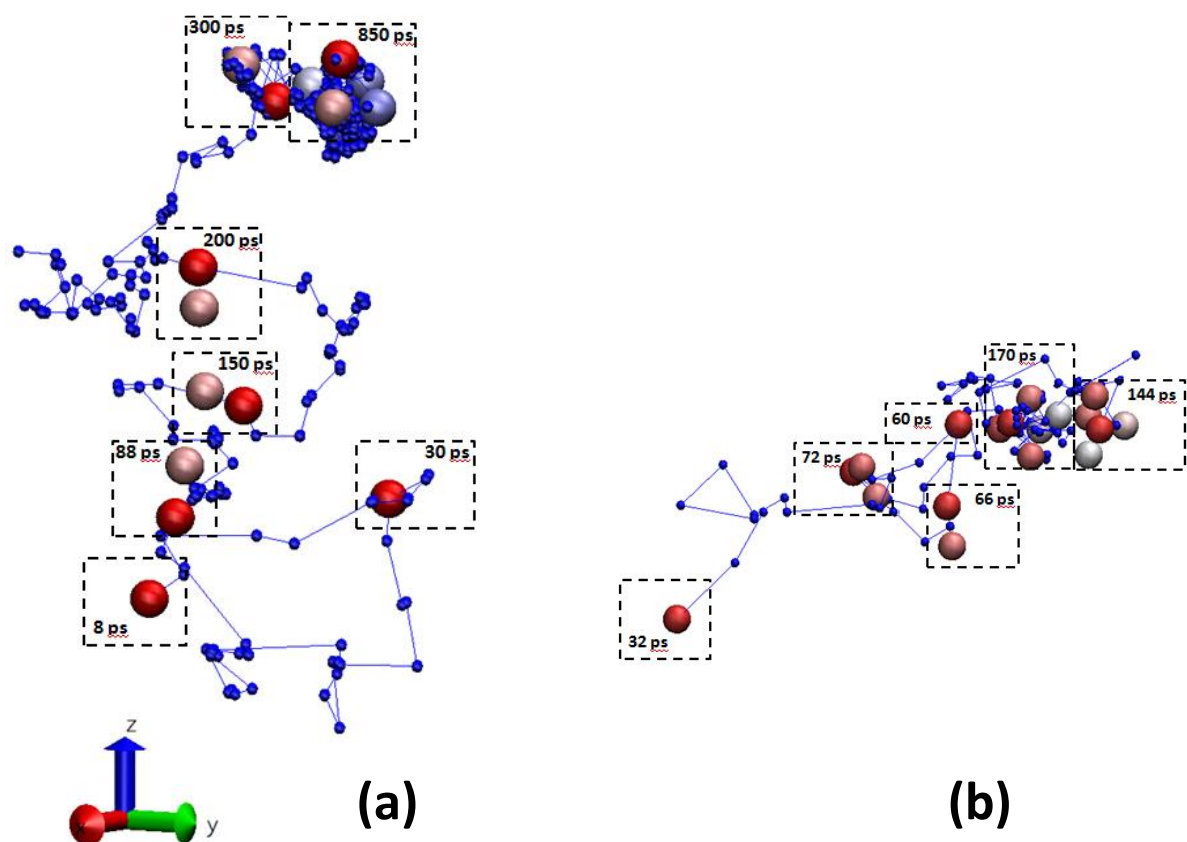


Figure 3: Two different trajectories of He atoms leading to cluster growth in tungsten. Big spheres are He atoms. Small spheres are equal time interval of the trajectories. (a) The He₂ cluster is travelling a longer time before growing to He₃ cluster compared to (b). In both cases, the mobility of the growing cluster He_n is greatly reduced when n = 3. The clusters stop to move for n > 6.

From this step, the clusters are further growing (figure 2 d and e) via coalescence: different helium clusters are growing up to contact as displayed in figure 4

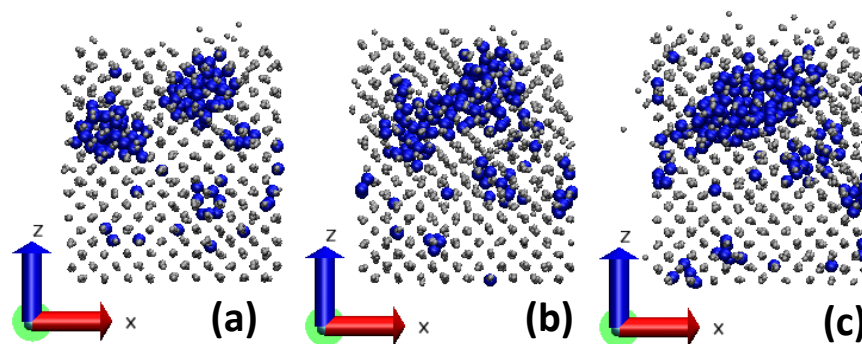


Figure 4: Coalescence of two He clusters at times (a) 600 ps (b) 720 ps and (c) 800 ps

Big clusters form between 30 and 60 Å depth below the outermost surface and then coalesce to form broad bubbles (figure 2 f to j). Helium concentration in this 30-60 Å slice is continuously increasing. In the meantime, the W lattice is continuously expanding along the z axis. This is mainly due to “loop punching event”:¹³⁻¹⁵ the W atoms are pushed away as a He bubble is growing. The W atoms are thus moving along (111) planes as “crowdion cascade” towards the surface where they are stacking in crystal positions above the initial surface. This results in increasing the height of the current surface¹⁵ as illustrated in figure 5.

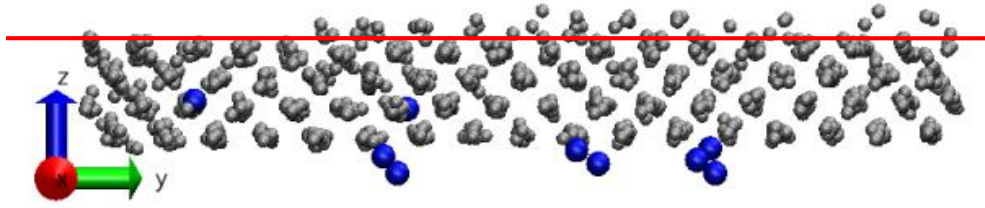


Figure 5: The overall surface is expanded by displaced W atoms, due to bubble growth, above the surface horizontal line give initial $z = 0$ surface.

After some time, the He bubble becomes large enough to induce W lattice fracture. This looks like the so-called flaking (figures 2 k and l and figure 6).

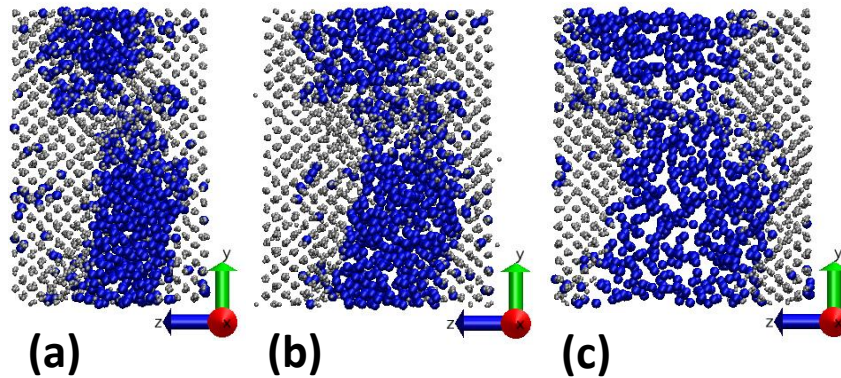


Figure 6: details of the substrate flaking. (a) He bubbles are ready to coalesce on the width of the substrate (b) the single bubble start to expand (c) the substrate is fractured.

This phenomenon as already been observed experimentally by Gilliam et al.¹¹From this step, the simulation is stopped as the implantation begins on a “refreshed” substrate surface already containing implanted He atoms.

For investigating the processes leading to the rupture of the substrate, we study the evolution of the depth concentration profile.

3.3. Depth profiles

3.3.1. Final depth profile

In Figure 7(a) a snapshot of the helium atom positions is presented for 2000 impinging and 901 retained atoms. While in figure 7(b), the helium depth profiles determined both by SRIM and MD simulations are plotted.

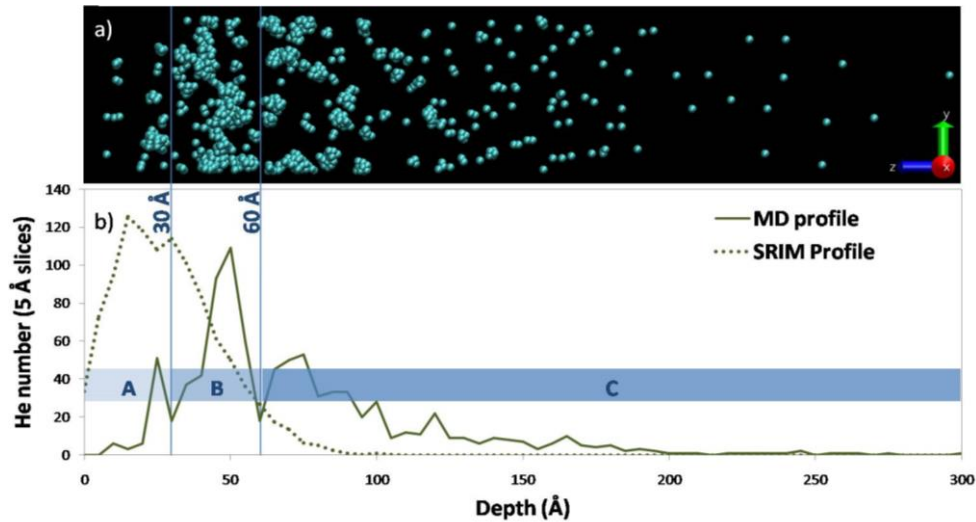


Figure 7: a) Snapshot of the MD simulated He atoms distribution. The W atoms have been removed for clarity; b) Corresponding plot of the depth distribution comparing MD simulations (full line) and the SRIM calculations (dotted lines). The area labelled A, B and C define three different implantation zones.

MD simulation calculated He concentration profile exhibit a multimodal distribution defining three main zones of He localization. The three zones are defined as: a near-surface zone (A) from the surface to 30 Å in-depth, an intermediate zone (B) between 30 and 60 - 70 Å below the surface, where the highest helium concentration is found, and a third zone (C) from 60 - 70 Å to the bulk of the substrate in which the helium concentration decreases towards the in-depth. From 200 Å depth, the concentration of He becomes negligible. Note that the position of the regions is measured from the outermost surface at the considered implantation time, not from the initial surface in order to take into account the swelling behaviour. The SRIM profile shows a distribution expanding from the outermost W surface

to 90 Å with a maximum at 15 Å, without multimodal structure nor spreading. This is due to the different interactions involved in MD and SRIM.

The shape of the depth profile obtained with MD simulation is displaying a stratification of the He concentration. Such stratified depth profile was observed by Li et al.¹⁵ for simulations of 200 eV helium implantation in (001) tungsten at 300 K. They observed a near-surface zone below three or four W layers such as the one we defined as A (fig 7-b) where single helium atoms are located and small clusters formed. They revealed that such small clusters led to changes of the morphology near the substrate surface. However, the biggest clusters formed in their case were located 45 Å below the surface. These clusters can also undergo a “rupture” which consists in emptying from most of their He atoms content, ejecting them away from the surface. In our case, the highest concentration of helium is located deeper (60 – 70 Å) than for 200 eV impinging atoms, so clusters are unable to explode and eject all or part of their helium content. The clusters accumulate, coalesce and eventually separate the substrate in two parts.

3.3.2. Depth profile evolution

Evolution of the helium depth distribution is plotted in Fig 8 for various number of impinging He atoms.

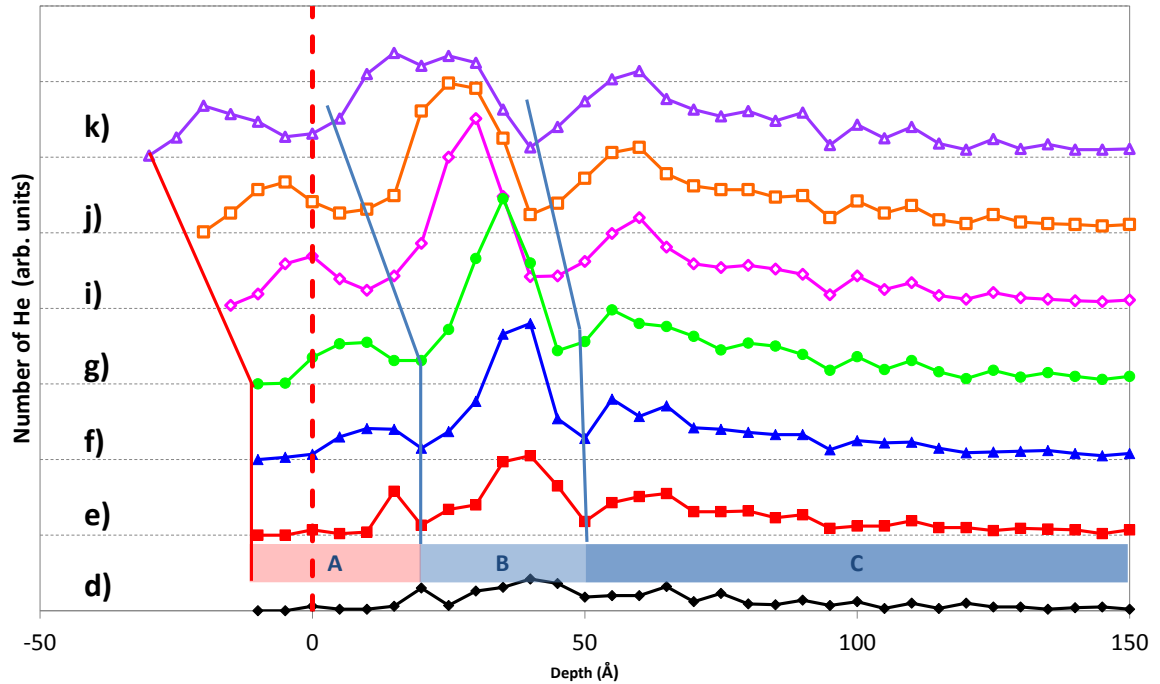


Figure 8: Depth profile plots as a function of the number of impinging He atoms . The vertical dotted line displays the initial surface at $t=0$ and the full one corresponds to the actual swelled surface. The separating lines show the evolution of the B and C zones. Each depth profile corresponds to a frame presented in fig 2. Labels on left part of the plot correspond to snapshots of figure 2.

The three zones A, B and C previously defined quickly appear after the beginning of the implantation. As soon as 900 atoms are retained (plot e) we observe the premises of preferential slowing down sites for the helium between 30 and 60 Å (zone B), broadening to 70 Å when retained He concentration increases. The increase of the retain concentration corresponds to formation, growth and expansion of bubbles ultimately leading to the flaking. This intermediate region (B) where the clusters grow corresponds to the mean penetration depth of the incident ions at this energy. The deeper region (Zone C-from 50 Å to the substrate bottom in frame e) originates from the He atoms which were not trapped by clusters in the previous zones and diffuse in the substrate. The He density decreases with the depth forming a tail in the zone C. The near-surface region (A) corresponds to the helium atoms that quickly lose their energy close the surface and acts as traps for further cluster

growth. Regions A and C surrounding the bubble (in the B zone) do not seem to evolve much after the maximum of concentration is reached (frame g). In the case of the C region, it is due to the impossibility for the helium atoms to cross the bubble where they are trapped. On the other hand, a slight increase of the concentration in the A zone is observed and corresponds to balance between incoming He atoms which are rapidly slowing down thus contributing to the formation and growth of small clusters, and those which enter temporarily and escape from the substrate. These latter are recorded as backscattered ions.

In order to check if the periodic boundaries used in the simulations are not responsible for such behaviour (cluster formation and saturation) in response to the implantation process, the simulation was performed on a two times larger substrate with the same proportional number of impinging helium atoms. The cluster formation and substrate rupture proceeded similarly.

The highest concentration of helium reachable in the W substrate corresponds to the time when the substrate is starting to break. We define this as the saturation level. After the flaking phenomenon, the surface is considered as partially regenerated leading to a new surface already containing some helium atoms that is exposed to the helium flux. Due to calculation time limitations when the saturation occurs, the simulation is stopped and the implantation process is no more considered on the flaked substrate surface.

The saturation level is reported in Table 2 which lists the number of retained helium atoms and the corresponding implanted dose as a function of the impinging He atom number. The runs 3 and 4, give similar saturation levels since the saturation phenomenon appears between 4000 and 5000 impinging helium atoms, corresponding to doses of 1.38 and 1.73

10^{16} He cm^{-2} . The surface is twice larger for the run 5 so the dose is the same as for the run 3, the number of retained atoms is about twice the number for the smaller surface substrate. It means the phenomena are not surface size dependent.

Table 2: Number of injected and retained He atoms for various MD simulation runs

| Run # | Impinging atom number | Corresponding dose(He cm^{-2}) | Retained atom number | Implanted dose (He cm^{-2}) | Retention rate |
|-------|-----------------------|--|----------------------|---------------------------------------|----------------|
| 1 | 2000 | 6.91×10^{15} | 906 | 3.13×10^{15} | 0.45 |
| 2 | 4000 | 1.38×10^{16} | 1721 | 5.94×10^{15} | 0.430 |
| 3 | 5000 | 1.73×10^{16} | 1887* | 6.52×10^{15} | 0.38 |
| 4 | 9971 | 3.37×10^{16} | 1939* | 6.70×10^{15} | 0.2 |
| 5 | 10000 (large) | 1.73×10^{16} | 4754* | 8.24×10^{15} | 0.48 |

(*) Substrate rupture occurred at this number of retained He atoms.

In order to check the hypothesis of saturation phenomenon, experiments are carried out performing helium implantations in conditions matching the simulations parameters: 300 eV Helium ion implantation at room temperature and number of impinging He atoms below and above the predicted saturation level.

3.4. Helium retention

The helium retention corresponds to the number of atoms which remains in the substrates after the implantation experiment. Experimentally, this number is measured by NRA. In the case of the simulations, Molecular Dynamics results allow performing statistics on each impinging helium atoms upon its spatial coordinates. The number of atoms with a z

coordinate below the surface of the tungsten substrate is determined and reported to the area of the substrate box. Finally, SRIM software gives directly a number of backscattered ions. The implantation probability is readily deduced from this number.

The measured implanted doses are plotted versus the impinging He atom number in figure 9. Also, are plotted the MD and SRIM simulations results.

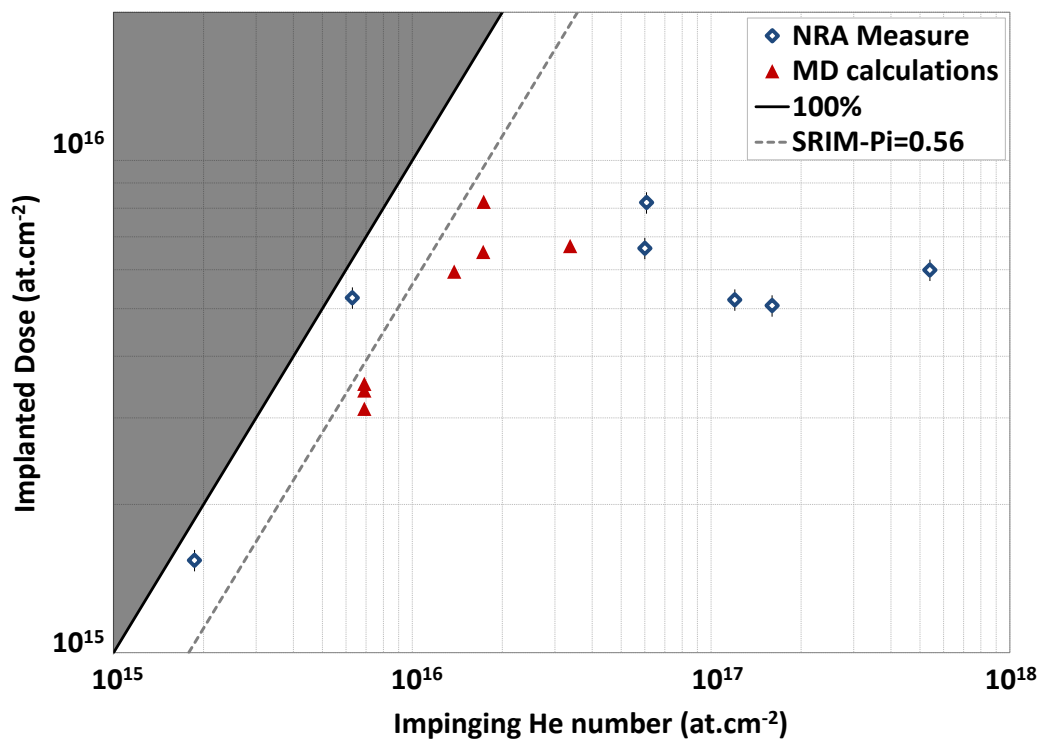


Figure 9: Implanted dose (measured or calculated) as function of the number of impinging He atoms per unit area. The empty diamonds are the experimental measurements of the dose obtained by NRA. The full triangles are results from the molecular dynamic simulations. The full line corresponds to the 100% implantation probability and the dotted line corresponds to the implantation probability obtained by SRIM calculations ($\text{Pi}=0.56$).

Two behaviors are observed depending on the impinging He atoms number. Before saturation, i.e. below impinging 10^{16} He cm⁻², the implanted dose increases linearly. Experimentally, the implanted dose corresponds to 83% of the number of impinging He atoms calculated from the ion current measured on the substrate holder. This ratio is higher

than the calculated values of 56% for SRIM and 45 to 49% predicted by the MD simulations depending on the dose. Such experimental high retention rates were also evidenced experimentally in the literature but at higher energies, thus far from our conditions. E Zenobia *et al*³² performed implantations with low impinging He atoms number (5×10^{16} He cm^{-2}) with a kinetic energy of 30 keV, they observed a retention close to 100%. Meanwhile, Gilliam *et al*¹¹ considered the retention to be equal to 100% below the “critical dose” at which they observed the formation of blisters during implantations of 1.3 MeV He ions impinging tungsten.

On the other hand, MD simulations are considering the crystallinity of the sample, moving substrate atoms and helium accumulation contrary to SRIM calculations which assume an amorphous substrate with W density but is taking into account electronic effects. So retention values are not expected to be similar. MD implanted dose is even lower than the one calculated by SRIM, due to counting He atoms liberated from bubbles too close from the surface.

A reason which could explain such differences with experiments of the implanted dose for low impinging He atoms number could be the nature of real samples which are polycrystalline. Various crystal orientations are present promoting or not the channeling and grain boundaries exist where He accumulation is different from the grain “bulk”. It has been recently demonstrated that (111) orientation of W allows deeper He implantation.³³ At the same time it is reported that “Helium clustering behavior and bubble formation are largely independent of the surface orientation at depths below about 3 nm”.³³ So our (100) simulations will provide a relevant picture of bubble growth leading to the substrate fracture (fuzz phenomenon). Various experimental and simulation studies presented the effect of the grain boundaries on He retention in W. On the one hand, Sefta *et al*.³⁴ MD study compared

the helium implantation processes happening either there were or not grain boundaries. They showed the helium propensity to accumulate in those locations which could explain the difference between the experimental values and the simulated ones. On the other hand, the comparison of various grain size made by Zenobia *et al*³², mentioned in the previous section, showed the Helium retention in nano-grain sized tungsten was lower than in polycrystalline W with micrometric grain size, but at considerably higher energies, compared to the present work. They assumed the density of grain boundaries to be responsible for the low retention level. Hu et al carried out large scale MD simulations on a model polycrystalline W at 933 K.³⁵ They observed that helium segregates towards grain boundaries as well as the outer surface. Thus very different results are reported in the literature regarding the effect of grain boundaries, but also in different situations. In the present experimental work W, substrates exhibits very large grains with small area of grain boundaries, thus these boundaries may have a limited impact on the He retention process. Moreover, He atoms were found to stop migrating as soon as a small cluster of around 7 atoms is formed, at 300 K. At this temperature, they cannot reach the boundaries anymore and the global implantation process can be considered as implantation in a single crystal grains, which is described in the present MD simulations.

Above an impinging He atoms number of 10^{16} He cm⁻², a leveling-off of the implanted dose appears, defining a saturation regime. This trend is observed both experimentally and using MD simulations at an implanted dose slightly above $5 \cdot 10^{15}$ He cm⁻². The fact that no saturation step is predicted by SRIM shows again that this phenomenon is related to the effect of accumulation of He in the W lattice and to the interaction between implanted He atoms. Such saturation is expected when invoking He mobility and the resulting ease to

escape away. This behavior was observed experimentally by Lhuillier et al.³⁶, who assumed that the low implanted doses measured by NRA resulted from the high mobility of helium in tungsten lattice. This was also observed earlier at low temperature by Soltan *et al.*³⁷ and J. Amano et al.²⁹

Lee et al.¹² claimed the saturation would happen because of the stress fields increasing in the lattice due to the growth of a localized dense array of He_nV_m complexes preventing the deep penetration of the He ions and promoting the cluster ruptures and the ejection of the He atoms outside the material.

Our MD results attributing saturation to a flaking mechanism do not contradict these hypotheses, but focus on the role of “exploding” (or expanding) bubbles in liberating large amount of He. This can be related to highly strained tungsten lattice. Strain can originate from bubble growth, due to merging clusters which leads to swelling of the W lattice^{38,39}. When an helium atom implanted dose threshold is reached (depending on incident energy and experiment temperature), the flaking and exfoliation occur^{10,11}. He diffusion and He atom escaping the substrate observed in the near-surface zone (zone A) contributes also to the saturation phenomenon, the way Lhuillier suggested it³⁶. On the other hand, as mentioned before, as soon as helium atoms start forming clusters, their mobility dramatically decreases even close to the surface^{40,41}. This also leads to the bubble growth, expansion and flaking phenomenon when these clusters merge with the deeper ones.

One should be careful in directly comparing experiments and MD simulations: experiments are carried out on polycrystalline W while present MD simulations are considering a perfect single crystal W. Nevertheless, the MD study of Sefta et al.³⁴ mimicking He interactions on model polycrystalline W at 60 eV show that polycrystalline state only affect bubble size

distribution and location for the same implanted dose. Flaking then should not be affected by these features when the bubbles coalesce close to saturation level. Moreover experiments of Gilliam et al.¹¹ showed that the crystalline state only plays a role for low dose while at higher dose, i.e. close to observed saturation, there is no more difference between single crystal and polycrystalline W substrates.

4. Conclusion

Molecular dynamics and SRIM simulations are carried out to give an insight into helium behaviour during implantation process into tungsten leading to bubble formation.

Experiments are compared to MD simulations, paying attention to the close matching of initial conditions.

MD simulations describe three steps in the helium behaviour:

- He penetrates the substrate and diffuses interstitially, until it encounters another He atom.
- Two He atoms form a cluster which stops diffusing and become a trap site for other incoming He atoms. The stratification observed on the calculated depth profiles is due to the formation of clusters at different depths of the impinging helium atoms and on the way by which the energy is dissipated in the substrate.
- Formed He clusters grow and coalesce beneath W substrate surface until He concentration becomes high enough to lead to tungsten flaking. On the other hand, we do not observe near-surface “cluster rupture” leading to only He atom ejection towards vacuum

300 eV ³He implantation experiments in polycrystalline W samples corroborate the impinging He atom number and the retention doses at which the saturation phenomenon occurs, which is found around $5 \cdot 10^{15}$ He cm⁻². This is also consistent with previous

experimental studies at low energy. However, below a certain impinging He atom number, there is a difference between the retained doses obtained with the two methods, simulation and experiments; this is attributed to the polycrystalline nature of the samples. Further work will allow studying influence of the impinging helium atom kinetic energy and substrate temperature. An interesting point would be to introduce a kinetic energy distribution function more consistent with the experiments and include grain boundaries in the simulation box.

Acknowledgements

Conseil Régional du Centre is gratefully acknowledged for granting “PIMAT” project. We would like to thank C. S. Becquart and J. Boisse for providing us with modified He-W potentials.

References

- [1] R. E. Nygren, R. Raffray, D. Whyte, M.A. Urlickson, M. Baldwin, L. L. Snead, *J. Nucl. Mater.* 417 (2011), 451–456.
- [2] J. Roth, E. Tsrone, A. Loarte, T. Loarer, G. Counsell, R. Neu, V. Philipps, S. Brezinsek, M. Lehnen, P. Coad, C. Grisolia, K. Schmid, K. Krieger, A. Kallenbach, B. Lipschultz, R. Doerner, R. Causey, V. Alimov, W. Shu, O. Ogorodnikova, A. Kirschner, G. Federici, A. Kukushkin, *J. Nucl. Mater.* 390-391 (2009), 1–9.
- [3] A. W. Kleyn, W. Koppers, N. Lopes Cardozo, *Vacuum* 80 (2006) 1098–1106.
- [4] D. M. Goebel, G. Campbell, R. W. Conn, *J. Nucl. Mater.* 121 (1984) 277–282.
- [5] S. Kajita, N. Ohno, N.; M. Yajima, J. J. Kato, *J. Nucl. Mater.* 440 (2013) 55–62.
- [6] K. Erents, G. Carter, *Vacuum* 16 (1966), 523–527.
- [7] R. S. Barnes, G. B. Redding, A. H. Cottrell, *Philosophical Magazine* 3 (1958) 97–99.
- [8] D. Nishijima, M. Y. Ye, N. Ohno, N.; S. J. Takamura, *J. Nucl. Mater.* 329-333 (2004) 1029–1033.
- [9] M. J. Baldwin, R. P. Doerner, *Nucl. Fusion* 48 (2008), 035001.
- [10] M. Tokitani, S. Kajita, S. Masuzaki, Y. Hirahata, N. Ohno, T. Tanabe, *Nucl. Fusion* 51 (2011) 102001.
- [11] S. B. Gilliam, S. M. Gidcumb, N. R. Parikh, D. G. Forsythe, B. K. Patnaik, J. D. Hunn, L. L. Snead, G. P. Lamaze, *J. Nucl. Mater.* 347 (2005), 289–297.
- [12] H. T. Lee, A. A. Haasz, J. W. Davis, R. G. Macaulay-Newcombe, D. G.; Whyte, G. M. Wright, *J. Nucl. Mater.* 363-365 (2007) 898–903.

- [13] K. O. E. Henriksson, K. Nordlund, J. Keinonen, *Nucl. Instruments Methods Phys. Res. B* 244 (2006) 377–391.
- [14] M. Li, J. Cui, J. Wang, Q. Hou, *J. Nucl. Mater.* 433 (2013) 17–22
- [15] M. Li, J. Cui, J. Wang, Q. Hou, *Nucl. Instruments Methods Phys. Res. B* 337 (2014) 45–54.
- [16] J. F. Ziegler, M. D. Ziegler, J. P. Biersack, *Nucl. Instruments Methods Phys. Res. Sect. B Beam Interact. with Mater. Atoms* 268 (2010) 1818–1823.
- [17] S. Plimpton, “Lammps Sandia,” 1995. [Online]. Available at: www.lammps.sandia.gov.
- [18] H. J. C. Berendsen, J. P. M. Postma, W. F. van Gunsteren, A. DiNola, J. R. Haak, *J. Chem. Phys.* 81 (1984) 3684–3690.
- [19] D. B. Graves, P. Brault, *J. Phys. D. Appl. Phys.* 41 (2009) 194011.
- [20] Q. Hou, M. Hou, L. Bardotti, B. Prével, P. Mélinon, A. Perez, *Phys. Rev. B* 62 (2000) 2825–2834.
- [21] N. Juslin, B. D. Wirth, *J. Nucl. Mater.* 432 (2013) 61–66.
- [22] D. E. A. Beck, *Molecular Physics*, 14 (1968) 311–315.
- [23] R.E. Stoller, M. B. Toloczko, G. S. Was, A. G. Certain, S. Dwaraknath, F. A. Garner *Nucl. Instruments Methods Phys. Res. Sect. B Beam Interact. with Mater. Atoms* 310 (2013), 75–80.
- [24] T. Sauvage, H. Erramli, S. Guilbert, L. Vincent, M. F. Barthe, P. Desgardin, G. Blondiaux, C. Corbel, J. P. Piron, F. Labohm, A. Van Veen, *J. Nucl. Mater.* 327 (2004), 159–164.
- [25] Paszti F., *Nucl. Instr. and Meth. in Phys. Res. B* 66 (1992) 83–106
- [26] B.M.U. Scherzer, R. Behrisch, J. Roth, *Nucl. Instr. and Meth.* 157 (1978) 75–81
- [27] R. Schultz, Behrisch R., B.M.U. Scherzer, *Nucl. Instr. and Meth.* 168 (1980) 295–299 ;
- [28] W. Jager, J. Roth, *Nucl. Instr. and Meth.* 182–183 (1981) 975–983.
- [29] J. Amano, D. N. Seidman, *J. Appl. Phys.* 56 (1984) 983–992.
- [30] L. Hu, K. D. Hammond, B. D. Wirth, D. Maroudas, *Surf. Sci.* 626 (2014) L21.
- [31] L. Hu, K. D. Hammond, B. D. Wirth, D. Maroudas, *J. Appl. Phys.* 118 (2015) 163301
- [32] S. J. Zenobia, G. L. Kulcinski, *Phys. Scr.* T138 (2009) 014049.
- [33] K D. Hammond, B. D. Wirth, *J. Appl. Phys. J. Appl. Phys.* 116 (2014) 143301
- [34] F. Sefta, K. D. Hammond, N. Juslin, B. D. Wirth, *Nucl. Fusion* 53 (2013) 073015.
- [35] L. Hu, K. D. Hammond, B. D. Wirth, D. Maroudas, *J. Appl. Phys.* 115 (2014) 173512

- [36] P. E. Lhuillier, T. Belhabib, P. Desgardin, B. Courtois, T. Sauvage, M. F. Barthe, A. L. Thomann, P. Brault, Y. Tessier, *J. Nucl. Mater.* 433 (2013) 305–313.
- [37] A. S. Soltan, R. Vassen, P. Jung, *J. Appl. Phys.* 70 (1991) 793–797.
- [38] M. Miyamoto, D. Nishijima, M. J. Baldwin, R. P. Doerner, Y. Ueda, K. Yasunaga, N. Yoshida, K. Ono, *J. Nucl. Mater.* 415 (2011) S657–S660.
- [39] A. A. Haasz, M. Poon, J. W. Davis, *J. Nucl. Mater.* 266 (1999) 520–525.
- [40] X.-C. Li, X. Shu, P. Tao, Y. Yu, G.-J. Niu, Y. Xu, F. Gao, G.-N. Luo, *J. Nucl. Mater.* 455 (2014) 544–548.
- [41] A. V. Barashev, H. Xu, R. E. Stoller, *J. Nucl. Mater.* 454 (2014) 421–426.