



HAL
open science

Museum augmented interface for historical scale models: towards a new way for cultural heritage promotion

Benjamin Hervy, Florent Laroche, Jean-Louis Kerouanton, Alain Bernard,
Christophe Courtin, Bertrand Guillet, Laurence d'Haene, Arnaud Wael

► To cite this version:

Benjamin Hervy, Florent Laroche, Jean-Louis Kerouanton, Alain Bernard, Christophe Courtin, et al..
Museum augmented interface for historical scale models: towards a new way for cultural heritage
promotion. International Journal of Virtual Reality, 2015, 15 (1), pp.3-9. hal-01236995

HAL Id: hal-01236995

<https://hal.science/hal-01236995v1>

Submitted on 17 Nov 2016

HAL is a multi-disciplinary open access archive for the deposit and dissemination of scientific research documents, whether they are published or not. The documents may come from teaching and research institutions in France or abroad, or from public or private research centers.

L'archive ouverte pluridisciplinaire **HAL**, est destinée au dépôt et à la diffusion de documents scientifiques de niveau recherche, publiés ou non, émanant des établissements d'enseignement et de recherche français ou étrangers, des laboratoires publics ou privés.

Museum augmented interface for historical scale models: towards a new way for cultural heritage promotion

Benjamin Hervy

LUNAM Université, Ecole Centrale
Nantes, IRCCyN UMR CNRS 6597

Benjamin.hervy@irccyn.ec-nantes.fr

Florent Laroche

LUNAM Université, Ecole Centrale
Nantes, IRCCyN UMR CNRS 6597

Florent.Laroche@irccyn.ec-nantes.fr

Jean-Louis Kerouanton

LUNAM Université, Université de
Nantes, CFV EA1161

Jean-Louis.Kerouanton@univ-nantes.fr

Alain Bernard

LUNAM Université, Ecole Centrale
Nantes, IRCCyN UMR CNRS 6597

Christophe Courtin

Château des ducs de Bretagne,
Musée d'histoire de Nantes

Laurence D'haene

Château des ducs de Bretagne,
Musée d'histoire de Nantes

Bertrand Guillet

Château des ducs de Bretagne,
Musée d'histoire de Nantes

Arnaud Wael

« Dev-o-cité » association

ABSTRACT

In this paper, we describe an interactive museum application dedicated to historical scale models. This comes from a joint work between multidisciplinary teams: industrial engineering researchers, historians, museum curators and interactive interface designer. We present here the result of the project, based on scientific methodology. Results include system architecture, hardware and software, some use cases and user evaluation figures. This paper also underlines some methodologies issues that illustrate future possibilities.

Categories and Subject Descriptors

D.2.2 [Software engineering]: Design Tools and Techniques – *user interfaces.*

H.5.2 [Software engineering]: User interfaces – *User-centered design.*

J.5 [Computer applications]: Arts and humanities.

General Terms

Documentation, Design, Experimentation, Human Factors,

Keywords

Museology, User interface, History, Knowledge management

1. INTRODUCTION

The increasing availability and performance of digital technologies is making museum's collection promotion more interactive. Cultural heritage benefits a lot from both acquisition techniques and promotion applications. But accurate interactive experience of history does not only rely on innovative technologies but also on innovative uses of low-cost digital material.

One of the most crucial issues in cultural heritage promotion is the process of curation. From heterogeneous data acquisition to appropriate visitor experience, a complex methodology is involved to achieve scientific purposes and cultural promotion mission.

Methodological aspects of this work have already been published in details. In [2], we explained the process of historical scale model acquisition and the combination with semantic information. We explained in [4] how knowledge modeling is important to avoid one-shot application. Finally, in [3], we introduced the advanced visualization possibilities to explore cultural heritage history thanks to virtual reality.

In this paper, we focus on an innovative use of digital technologies to promote cultural heritage. The museum context is related to a 100-year old scale model designed in 1899 to promote Nantes (French city) harbor activity.



Fig. 1: Nantes harbor scale model in Museum of history

Due to its huge dimensions (~18m²), this scale model is a precious witness to historians. Its scale is 1:500. It is currently exposed in the permanent exhibition of Nantes history museum in the “Château des ducs de Bretagne” and only little information is displayed to visitors: a 10-lines label and 3 archive movies. Moreover, nobody can touch the object, for obvious conservation purposes.

We propose an augmented visualization system to allow visitors to virtually manipulate the scale model. This system has been designed in a reproducible way, so that the approach can be used

to promote other scale models. Application source code, database schema and historical material will be available for re-use purpose.

Cultural heritage comprehension and promotion would benefit from formal methodology. In this paper we describe a process to promote one kind of CH object (scale models), but the methodology could be applied to the whole museum’s collection. And it can enhance the museum discourse as far as object’s histories are connected.

2. RELATED WORKS

Virtual 3D mock-up is a widely used artifact for cultural heritage promotion and understanding. It can be used to explore archaeological sites, or for hypothesis analysis. Some interesting projects combine 3D visualization to scientific historical purposes [5]. Such applications provide great tools for researchers to explore physical space in its historical context. Virtual reality technologies such as panoscope 3D [9] can also be used to provide immersive experience to visitor. Interactivity such as immersive experiences is considered useful when dealing with cultural heritage comprehension [6] [7] [8].

As far as scale models are concerned, many projects already exist. But most of them concern blank model on which it is possible to make video mapping and other visual effects. Very few deal with historical “plan-reliefs”. Some have emerged worldwide. The following table summarizes the different projects characteristics.

	Nantes	Liège	Toul	Prague	Beijing	Rome
Performance date	1898	1900	1846	1826	1950	1970
State of conservation	Good	Good	Bad	Good	Good	Good
Scale	1:500	1:1200	1:600	1:480	1:1000	1:250
Surface(m²)	17	1	39	20	75	278.4
Acquisition	Laser	Laser	Photographs & Laser	Stereoscopy	Structured light & Stereoscopy	Laser

Table 1: Existing historical scale model digitization projects

These figures illustrate a real need for museum when dealing with such objects. Besides the design of interactive application for visitors, there are great challenges to face with.

Here, we focus on the design process of museum visitors’ application based on physical object and information acquisition. First, we need to define the scope of the discourse in space and time. The space delimitation is quite easy as it is delimitated by the object itself. The time period can be more complicated as we can broaden the historical study. We chose to limit the research to object’s contemporary sources but provided to the system the ability to handle any kind of elements in time. On a historical point a view, this is a great advantage as it allows future research to be included and to be compared with existing material.

Considering the promotion challenge for visitors, we did not find any existing satisfying application for such objects. Historical scale models are almost never integrated in an interactive application for museum. Those who actually designed visualization facilities focus on one-shot application without content evolution possibility.

Our approach is mainly based on semantic historical content. We then connect any available source (graphical, textual, audio, video), geographical information and virtual 3D data. 3D data comes from the scanning of the object [13]. Finally, we design an augmented system based on multitouch interface and video projection, both connected to specific software and to a dedicated open database.

3. PHYSICAL SYSTEM ARCHITECTURE

The proposed “augmented scale model” system is based on 5 main components:

- The physical scale model
- The virtual 3D model
- One or several multitouch screens (depending on the size of the object). We choose 30 inches screens for accessibility issues and ergonomic purposes.
- One or several video projectors (depending on the side of the object)
- Web accessible database
- User graphic interface



Fig. 2: Proof-of-concept proposal for “augmented scale model”

Human machine interface relies on the connection between these 6 elements. Visitor can virtually explore the city through the multitouch screen. The main interface is composed of two high-definition pictures (8000px width): human-like view (using image stacking) and orthophoto. The two pictures are done thanks to semi-automated photo shooting.

3.1 Database schema and implementation

Database schema is based on four main classes:

- Semantic data provided by historians’ analysis. It takes place as historical description sheet.
- Related historical sources used by historians. Sources can be bibliographic references, graphical assets or any other oral, video archive.

- Semantic relationships between points of interest. These links provide to the user the ability to navigate through content.
- Space and time information. Nantes harbor scale model is limited in space and time. The represented city is contemporary to the beginning of the twentieth century.

3.2 Interactive software description

The multitouch designed application is written in Python, with the free software Kivy¹ framework. Kivy is widely used to design multitouch applications and is portable on every platform.

It allows gestures with several fingers: selecting, scaling, panning, and rotating.

Our software connects to the database and retrieves metadata and values in JSON format. It can display a window with 3D virtual model thanks to Panda3D open-source library².

Our application uses virtual 3D model to automatically detect scale model part that need to be illuminated using Polygon python library³. Moreover, it also uses the virtual 3D model to cut in the main interface picture a newly inserted area.

For research purposes, we designed a proof of concept (Fig. 2) of the proposed system. It is based on a smaller scale model, from the same author and the same epoch, that also belongs to the Nantes history museum.

4. DESIGN PROCESS OVERVIEW

An analogy with an iceberg easily gives an overview of the underlying process. Our approach is mainly user-centered. But our global system users are not only museum visitors. They also are museum professionals and other experts such as historians, and archaeologists.

Therefore, we do insist on knowledge organization system. This is crucial to design proper final application [1]. Indeed, we did not want to design one-shot device but rather imagine a global information system for museum. This is important to understand our process described on Fig.3.

4.1 Project resources

Resources involved, and especially human resources, in such project are significant. Here is a non-exhaustive taxonomy of involved skills:

- Curators who define the scope of the project. They bring object's related knowledge and work on museum discourse.
- Museum mediators who work on museum discourse to visitors.
- Historians who work with curators on scientific content. They lead archives research and
- IT engineers who work on information system design and 3D acquisition.
- Software developers who work on concrete implementation
- Graphical designers.
- Museum technical team to maintain the application.

Trans disciplinary is mandatory to build a museum discourse on top of a robust scientific corpus. It allows the system to be scalable: other end-user application can be designed on top of this digital heritage reference model.

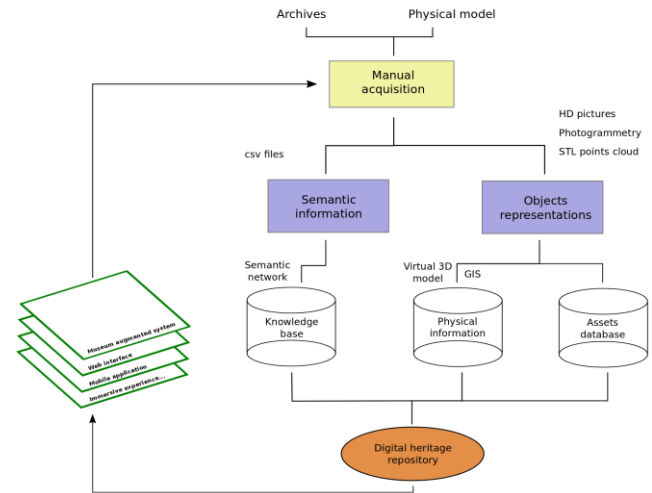


Fig. 3: Pipeline. We separate semantic information consisting of contextual knowledge and geographical data (or any graphical representation). End user applications such as the proposed augmented scale model framework are connected to the virtual record. We can finally capitalize new knowledge coming out from the use of existing applications.

4.2 Data acquisition

4.2.1 Physical object acquisition: 3D scanning

Our methodology has been published in [2] in relation with University of Liège geomatics unit that work on similar project. Global process consists of merging semantic and physical information into a virtual artifact. In the case of urban city models, it is called 3D virtual city model (3DVCM).

Scale model 3D digitization (Creaform HandyScan 3D) provides a STL file composed of almost 100 million of points. Many topological issues still have to be treated at this step: holes, files merges, missing parts and so on. Post-treatment (using Geomagic software) to solve these issues is described in [11].

Once the virtual 3D model is properly treated, it can be used for several purposes

- Virtual world generation could lead to virtual immersive experience in old Nantes city harbor. This implies a texturing step that is not covered in the scope of this paper.
- Semi-automatic geo-location is interesting to retrieve geographical information. This could lead to geo-located mobile applications for example. In our case, this is not fully implemented because of the poor quality of the extracted 2D map. The main other issue is the incorrectness of the scale model regarding to actual city.
- Connection between touchscreen, software application and video-projection on the physical object is the main use case for instance. When an area is select on the main user interface, the corresponding virtual area is detected in the virtual model. Then, the system retrieves the corresponding area of interest in the

¹ <http://kivy.org/>

² <https://www.panda3d.org/>

³ <https://pypi.python.org/pypi/Polygon/2.0.4>

database to highlight it on the scale model in front of the visitor.

4.2.2 Physical object acquisition: photogrammetry

In addition to the 3D digitization, photo acquisition is done to reproduce the view a visitor would have of the object in front of him. This step is semi-automatic and requires home-made traveling system to move the camera. 2 pictures are made for the application purpose: a 45° oriented picture using image stacking technique and an orthophoto using photogrammetry.

For both points of view, the camera is programmed to cover every part of the scale model. 25 photos are done for each camera position with a different focal length each time. 20 000 photos are necessary to provide the 8000 pixels width final picture. The final picture resolution guarantees that the visitor will be able to zoom in the picture.

It also allows us to make the link between geographical parts and semantic data in the database. Every city parts (building, place, street) on the physical object is stored as a polygon in the scale model coordinate system.

Polygons can be drawn manually on our dedicated web interface, on top of the picture, or can be retrieved semi-automatically for the 2D map extracted from the 3D model (this has not been fully implemented yet). Polygons coordinates are stored in WKT (well-known text) to PostGIS software.

A mapping of objects ids allows the system to identify what part of the museum scale model is linked to which database historical object.

For the future, we work on the possibility to semi-automatically derive geo-located data from these local coordinate system's polygons.

4.2.3 Semantic data acquisition

Historians have made research in archives for about 500 points of interest. They can be related to a company, a building (shipyard), a person (an employee) or even a thematic (“Shipment industry at the beginning of the twentieth century”).

Each one of these subjects is documented thanks to historical sources that can be either texts and/or graphics. In addition, they are also linked together thanks to metadata and especially keywords.

For every subject, we have a dedicated sheet containing metadata (title, description, address, keywords), paradata (historian information, annotation) for scientific methodology, associated sources and spatio-temporal information. For example, we can specify that the “Chantiers Dubigeon” company was at place “A” from date 1 to date 2. We can also mention the precision for time information. Space precision is not handled for instance.

4.3 Data modeling

Conceptual model is based on the DHRM (Digital Heritage Reference Model), a meta-model for industrial heritage analysis [4] [12].

In our context, we deal with **semantic information** (items of interest and relationships between them), **geographic information** with time specification (location of physical parts on the scale model and possibly geo-location information), and other **assets** such as digitized paintings, postcards, photos, etc.

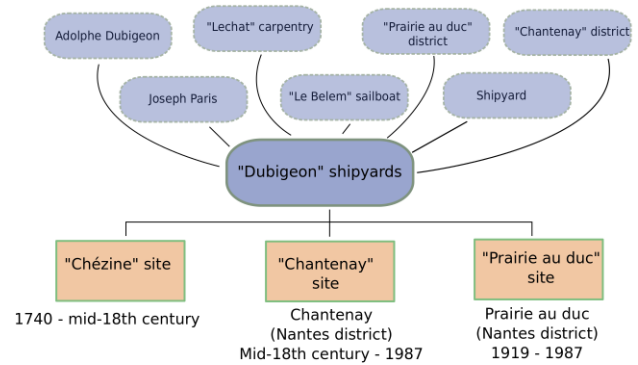


Fig. 4: "Dubigeon" shipyards instantiation example

All these concepts have been modeled in a relational database. For each class, we store dedicated metadata. Graphical assets metadata come from the existing museum collection database. Semantic information metadata (title, address, description) are adapted from the museum collection database. For design purpose, we add some metadata (summary, formatted keywords, coordinates in the physical object coordinate system) and relations based on keywords.

Object class attributes basic metadata such as title, description, address, and keywords. This class could be extended with reference models such as CIDOC-CRM [14] to specify the typology of objects involved.

Relationship class stores the links between objects based on keywords. Some metadata can be added to specify the relationship properties: annotation, date of the relation's beginning, date of its end. Once again, the model could be extended to take metadata from external schema (Dublin Core, CIDOC-CRM) into account.

Geographic information is time dependent. This allows the system to possibly be scalable: current data is approximately situated between 1880 and 1930, but we could imagine extending the time span. An object can have several geographical positions over time.

We implemented the model using free software Postgres. Geographic information is stored in PostGIS extension. For the semantic data, tests have also been done using Neo4j graph database with full success. But this is still experimental for future research purposes (identification of historical paths of interest).

4.4 Web interface

A web interface, written in standard web languages (HTML, CSS, PHP, Javascript) with CodeIgniter framework, allows researchers to upload their data and museum teams to edit and access the data.

A moderation and validation process has been decided to guarantee the quality of content. Once the data is validated, it is available online to everyone. Registered users can also propose new content such as postcards, photos or give information on new element depending on their access level. For example, basic user can only upload assets whereas researcher can add new information about a building.

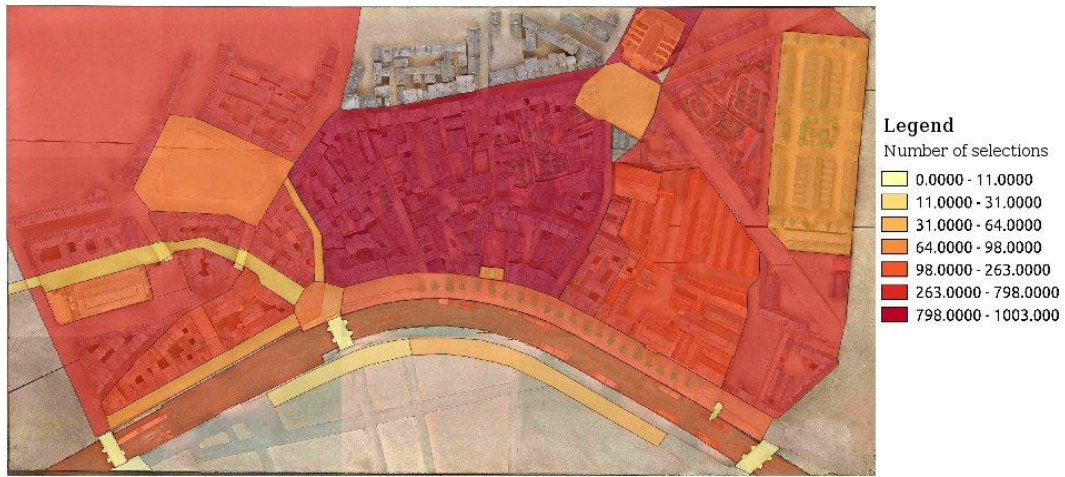


Fig. 5: Visitors' selections during test exhibition

5. USE CASES

5.1 Visitor use case

The basic use case concerns a single visitor. He can navigate through the main interface by zooming, panning, and selecting a place.

Main behavior is based on two steps. The scale model has been divided into three main neighborhoods. Thus, any visitor's action first redirects him to one of these neighborhoods. Then, the sub-parts of the neighborhood are highlighted and can be selected.

Once he selects an area, the system displays related content available in a carousel. Graphical resources can be zoomed and text can be resized depending on user abilities. Some related points of interest are also underlined to give some navigation clues for the visitor. Non-geographical elements are displayed at the bottom of the screen. They allow visitors who select a particular bridge or street to see all the bridges/streets on the physical scale model. This leads to serendipitous navigation based on our semantic network.



Fig. 6: Area selection and lighting feedback

We do not force any scenario; everyone can make research on any available element.

5.2 Museum guides use case

A specific back-office has been built next to the museum system to help museum team in their guided tours. Indeed, museum guides can choose the content to display in advance.

Doing so, they will take the control over the desired screens (possibly all of them) in front of the object thanks to a RFID badge. RFID chip contains every ids previously selected by the museum people. The system will then be able to display selected items on the screen to the group of visitors. It will help the guide to illustrate his discourse.

6. EVALUATION & OUTCOME

For research purposes, we designed a prototype of the proposed system. It is based on a smaller scale model, from the same author and the same epoch, that also belong to the Nantes history museum.

Thanks to smaller dimensions, we only deal with 50 points of interest. The acquisition and data modeling techniques were the same as described before.

For project management purposes (iterative improvements), we set up three evaluation stages:

- One with 20 museum professionals who were first asked on their digital tools experience and expectations.
- One by observing 80 museum visitors in real situation inside the museum during an afternoon. They were free to use the system, and we asked them to react after the experience.
- One during a 4 days exhibition. The exhibition was dedicated to digital heritage. A simple script written in Python recorded visitors' actions and time spent. No distinction by age or gender was made between visitors.

These three different evaluation studies give us some significant clues on both ergonomic aspect and the cultural mediation impact of such system.

6.1 Evaluation results

We describe here what appear as significant elements when dealing with cultural heritage promotion. In the next two sections, we focus on social consideration based on our observations, and on functional aspects.

6.1.1 Qualitative observations

Some interesting results show up from our observations. Proposed system make people understand object and city history thanks to the pooling of information and assets. Moreover, it creates group emulation. We observe that people use different methods for navigation: quick survey of available content, methodic access, full text reading or only graphical assets. Video projection feedback on the object catches visitor's eye.

6.1.1.1 Quantitative observations

Thanks to our monitoring system, we could retrieve some quantitative data from four full days of use. Fig. 5 illustrates the percentage of actions for each part of the scale model.

We can clearly identify the three main neighborhoods. The central one is preferred, probably due to its easier access. This kind of geographical access gives benefit to large areas. That is why our system is composed in 2 steps: every single place of interest will be highlighted, even the tiniest one. No element is left aside.

In addition, it is interested to underline the percentage of selected asset when a selection occurs. Let's remind that in such case, a carousel shows up, displaying all available historical material (3D view, description text, digitized content). Despite the prior position of description text in the carousel, almost 70% of selected items are images. And during the 4-days exhibition, 50% of the total number of images has been seen.

Finally, as far as time consumption is concerned, the 4 days exhibition shows up that people approximately spend only few seconds (~5) on displayed material. The observation day in the museum told us that visitors only spent 2 to 5 minutes on the system.

6.2 Perspective

Based on our results, we could define some future improvements and goals. On the first hand, more use case scenarios can be defined for disabled people, scholars, foreigners, etc. On the other hand, we can imagine interfaces to answer other cultural mediation means: augmented reality tour in the real city, immersive tour at home, and dedicated research interface for experts.

7. CONCLUSION

We propose an approach for improving historical scale models promotion. The method, applied on 2 similar scale models has proven the importance of multi-disciplinary work and a formal process based on digital heritage reference model.

What shows up is the scalability of the method that could lead to a global museum collection management system. This system would connect museum objects together, provide information to many multi-modal end-user application, and allow access to different museum professionals and experts.

8. REFERENCES

[1] Hervy, B., Billen, R., Laroche, F., Carré, C., Servières, M., Van Ruymbeke, M., Kerouanton, J.-L. (2012). A generalized approach for historical mock-up acquisition and data modelling: Towards

- historically enriched 3D city models. In T. Leduc, G. Moreau, & R. Billen, *Usage, Usability, and Utility of 3D City Models – European COST Action TU0801* (p. 02009). France: EDP Sciences.
- [2] Hervy, B., Laroche, F., & Bernard, A. (2012). An information system for driving the future plm for museum: the DHRM, Digital Heritage Reference Model. In *ASME 2012 11th Biennial Conference On Engineering Systems Design And Analysis - ESDA 2012*. Nantes, France.
- [3] Michel, A. P. (2009). La reconstitution virtuelle d'un atelier de Renault-Billancour: sources, méthodologie et perspectives. *Documents pour l'histoire des techniques*, (18), 23–36
- [4] Philippe Dubé, & Courchesne, L. (2012). Un lieu qui parle: la modélisation architecturale 3D vers une quatrième dimension. *Hereditas Monasterium*, 1, 129–137.
- [5] Flynn, B. (2008). Augmented visualisation: Designing experience for an interpretative cultural heritage. In *Information Visualisation, 2008. IV'08. 12th International Conference* (pp. 447 – 452). IEEE.
- [6] Roussou, M. (2000). Virtual Heritage: From The Research Lab To The Broad Public. In F. Niccolucci (Ed.), *Virtual Archaeology: Proceedings of the VAST Euroconference* (pp. 93–101).
- [7] Champion, E. (2011). Augmenting the Present With the Past. In *Playing with the Past* (pp. 157–176). London: Springer London.
- [8] Chevrier, C., Jacquot, K., & Perrin, J.-P. (2010). 3D modelling of a town scale model. In *Third International Conference EuroMed 2010 dedicated on Digital Heritage*. (pp. 99–107).
- [9] Gabriele Guidi; Bernard Frischer; Monica De Simone; Andrea Cioci; Alessandro Spinetti; Luca Carosso; Laura L. Micoli; Michele Russo; Tommaso Grasso; Virtualizing ancient Rome: 3D acquisition and modeling of a large plaster-of-Paris model of imperial Rome. *Proc. SPIE 5665, Videometrics VIII*, 119 (2005)
- [10] Billen, R., Blain, P., Donneau, O., Habraken, S., Renotte, Y., & Van Ruymbeke, M. (2009). Virtual model of the city of Liège in the eighteen century - "Virtual Leodium." In J. Verly (Ed.), *Proceedings of 3D Stereo MEDIA 2009, International 3D Stereo Film and Technology Festival (3D Stereo MEDIA)*. Liège.
- [11] Laroche, F., Lefevre, D., Servières, M., Hervy, B., Bernard, A. (2012). Intelligent Reverse-Engineering Segmentation: Automatic Semantic Recognition of Large 3D Digitalized Cloud of Points Dedicated to Heritage Objects. *ASME 2012 11th Biennial Conference on Engineering Systems Design and Analysis, Jul 2012, Nantes, France*.
- [12] Laroche, F., Bernard, A., & Cotte, M. (2008). Advanced Industrial Archaeology: A new reverse-engineering process for contextualizing and digitizing ancient technical objects. *Journal Virtual and Physical Prototyping*, 3, pp.105–122