



HAL
open science

[i]Candidatus[/i] *Neoehrlichia mikurensis* in Bank Voles, France

Muriel Taussat, Danielle Le Rhun, Jean-Philippe Buffet, Narimane Maaoui,
Maxime Galan, Emmanuel Guivier, Nathalie Charbonnel, Jean-Francois Cosson

► **To cite this version:**

Muriel Taussat, Danielle Le Rhun, Jean-Philippe Buffet, Narimane Maaoui, Maxime Galan, et al.
[i]Candidatus[/i] *Neoehrlichia mikurensis* in Bank Voles, France. *Emerging Infectious Diseases*, 2012, 18
(12), pp.2063-2065. <10.3201/eid1812.120846>. <hal-01224017>

HAL Id: hal-01224017

<https://hal.science/hal-01224017v1>

Submitted on 29 May 2020

HAL is a multi-disciplinary open access archive for the deposit and dissemination of scientific research documents, whether they are published or not. The documents may come from teaching and research institutions in France or abroad, or from public or private research centers.

L'archive ouverte pluridisciplinaire **HAL**, est destinée au dépôt et à la diffusion de documents scientifiques de niveau recherche, publiés ou non, émanant des établissements d'enseignement et de recherche français ou étrangers, des laboratoires publics ou privés.



Distributed under a Creative Commons CC BY 4.0 - Attribution - International License

Candidatus *Neoehrlichia* *mikurensis* in Bank Voles, France

Muriel Vayssier-Taussat, Danielle Le Rhun,
Jean-Philippe Buffet, Narimane Maaoui,
Maxime Galan, Emmanuel Guivier,
Nathalie Charbonnel, and Jean-François Cosson

To further assess the geographic occurrence, possible vectors, and prevalence of *Candidatus Neoehrlichia mikurensis*, we analyzed spleen tissues from 276 voles trapped close to human settlements in France; 5 were infected with the organism. Sequencing showed the isolates carried the same genotype as the bacteria that caused disease in humans and animals elsewhere in Europe.

Emerging infectious diseases substantially affect public health. Analysis of a database of 335 emerging infectious disease events indicated that 60.0% were zoonotic diseases, most (71.8%) of which originated in wildlife, and that zoonoses are increasing over time (1). Half of these emerging infection events involved bacteria belonging, for the most part, to the proteobacterial order *Rickettsiales* (1).

In Western Europe, the widespread and abundant *Ixodes ricinus* tick is the most common vector for human and animal pathogens and is also a major vector of pathogens responsible for rodent-borne diseases (2). Lyme borreliosis (Lyme disease), which is caused by infection with the bacteria *Borrelia burgdorferi* sensu lato, is the most prevalent tick-borne and rodent-borne illness. However, persons bitten by ticks can also be infected by other bacteria belonging to 3 main genera: *Anaplasma* spp., *Bartonella* spp. and *Rickettsiae* spp. Over the past 10 years, these bacterial species have been associated with tick-borne infections in humans (2).

During the last decade, DNA of a new species of intracellular bacteria belonging to the family *Anaplasmataceae* was sequenced from isolates from ticks and rodents originating in Europe and Asia (3–5). The first isolate of this organism was obtained in 2004 from wild *Rattus norvegicus* rats and *I. ovatus* ticks from Japan (6). A comparison of the

morphologic and molecular characterization of that isolate with earlier, closely related sequences in the GenBank database supported classification of the isolate in a novel genetic cluster within the family *Anaplasmataceae*; thus, the nomenclature “*Candidatus Neoehrlichia mikurensis*” was proposed for all current organisms in this group (6).

Since the 2004 discovery of *Candidatus N. mikurensis*, the bacterium has been identified in different tick species, including *I. ricinus* ticks in Europe, and in small rodents (other than *R. norvegicus* rats) suspected of being the main reservoir for the bacterium (7–10). In 2010, human infection with *Candidatus N. mikurensis* was reported in a Swedish patient (11). In that same year, infections were described in 5 persons in Germany, Switzerland, and the Czech Republic (12). More recently, *Candidatus N. mikurensis* infection was reported in a dog in Germany (13). Signs and symptoms described in all cases were general and nonspecific (e.g., fever, cough, anemia, headache, pulmonary infiltrate, malaise, myalgia, joint pain, extreme fatigue, erythema), making diagnosis difficult, particularly in the absence of serologic tests. Thus, it is likely that the actual incidence of human *Candidatus N. mikurensis* infection in Europe is much higher than currently reported.

Previous studies of *Candidatus N. mikurensis* in Europe have advocated for an assessment of the geographic occurrence, possible vectors, and prevalence of this microorganism. In this study we demonstrate the presence of *Candidatus N. mikurensis* in France, specifically in the bank vole (*Myodes glareolus*), a suspected reservoir for the microorganism.

The Study

During the course of a 2008 study of the epidemiology of Puumala hantavirus, we trapped voles in the French Ardennes, a forested region on the border with Belgium, along a transect line of ≈80 km (14). Along this transect, we sampled 6 sites in forested areas and 4 sites in fragmented habitats (i.e., hedge networks). We euthanized the voles by cervical dislocation and determined their weight and sex. The animals were then dissected. Spleens were placed in RNAlater Storage Solution (Sigma-Aldrich, St Louis, MO, USA) and stored at –20°C for further analyses. We used the DNeasy Blood and Tissue Kit (QIAGEN, Hilden, Germany) according to the manufacturer’s instructions to extract genomic DNA from a portion of the spleen into a final elution volume of 100 μL.

To test the spleen DNA for the presence of *Candidatus N. mikurensis*, we used PCR with specific primers targeting the *Candidatus N. mikurensis groEL* gene, as described (13): results were positive for 5 (1.8%) of 276 vole spleens tested. This prevalence lies within the range (0%–11.5%) found among small rodents trapped in other European countries (7,9). Rodents positive for *Candida-*

Author affiliations: Institut National de la Recherche Agronomique, Maisons-Alfort, France (M. Vayssier-Taussat, D. Le Rhun, J.-P. Buffet, N. Maaoui); and Institut National de la Recherche Agronomique, Montferrier-sur-Lez, France (M. Galan, E. Guivier, N. Charbonnel, J.-F. Cosson)

DOI: <http://dx.doi.org/10.3201/eid1812.120846>

tus N. mikurensis were trapped in forested patches in Wories (49.903°N, 4.763°E), Elan (49.655°N, 4.770°E), and Croix-aux-Bois (49.419°N, 4.824°E), France, and also in a hedge network in Cliron (49.802°N; 4.619°E), France, where the *I. ricinus* tick is also abundantly present (E. Ferquel, pers. comm.). All *Candidatus* N. mikurensis–positive bank voles were trapped in close proximity (300 m–1 km) to human settlements and villages.

All PCR products (a 1,024-bp fragment of the *groEL* gene) were sequenced in forward and reverse directions by Eurofins MWG Operon (Ebersberg, Germany). Sequences were aligned and analyzed for phylogenetic purposes by using SeaView version 4 (15). All sequences were identical and matched those of the *Candidatus* N. mikurensis *groEL* gene. Sequences showed the highest identity with gene sequences of *Candidatus* N. mikurensis isolates in Europe. In particular, the sequences showed 99% nt identity with sequences obtained for isolates from 2 humans (GenBank accession nos. EU810407.1 and EU810406.1) and a dog (GenBank accession no. EU432375) residing in Germany. The lowest sequence identity was shared with isolates obtained outside of Europe: 95% nt identity with isolates from wild rodents in the People's Republic of China (GenBank accession nos. JQ359066, JQ359067, and JQ359068); 94% identity with isolates from wild rodents and *I. ova-tus* ticks in Japan (GenBank accession nos. AB074461 and AB084583, respectively); and 91% identity with isolates from raccoons in the United States (GenBank accession no. EF633745).

We constructed the phylogenetic tree by using the neighbor-joining method and a Kimura 2-parameter distance. Bootstrap analysis was performed on 1,000 replicates.

Phylogenetic analysis of the comparatively long *groEL* gene sequence showed highly significant clustering of the samples into 3 groups supported by high bootstrap values (Figure), suggesting the existence of at least 3 types of *Candidatus* N. mikurensis sequence variants. Clustering was not related to the host or to the geographic origin of the sample. All sequences obtained from *Candidatus* N. mikurensis isolates from bank voles in France clustered together with sequences that had been amplified from samples from sick humans or animals in Europe.

Conclusions

Our results show that *Candidatus* N. mikurensis is present in bank voles in France; furthermore, the bacteria carried by the rodents in this study were of the same genotype as the *Candidatus* N. mikurensis that caused disease in humans and animals elsewhere in Europe. These findings have implications for public health because small rodents are the main source of blood meals for the larvae and nymphs of *I. ricinus* ticks and because the *Candidatus* N.

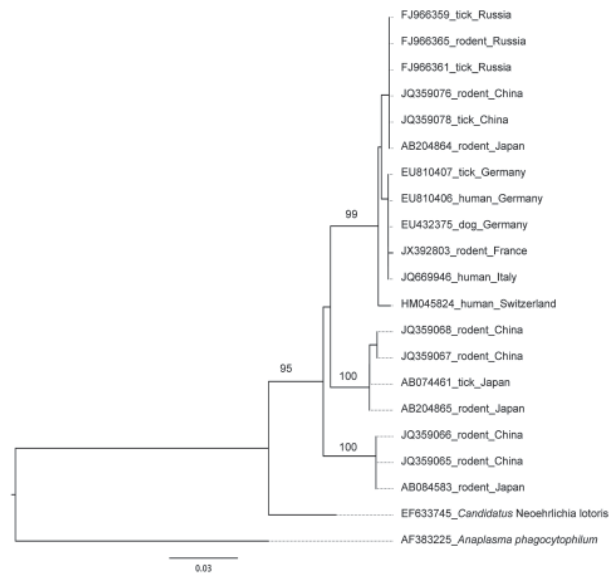


Figure. Phylogenetic relationships, as determined on the basis of the sequence of the *groEL* gene, between the unique *Candidatus* Neorhlichia mikurensis genotype detected in a population of bank voles from the French Ardennes and other *Candidatus* N. mikurensis genotypes from other geographic regions. The phylogenetic tree was constructed by using the neighbor-joining method with the Kimura 2-parameter distance model. Bootstrap analysis was performed on 1,000 replicates; values are indicated at the nodes. GenBank accession numbers are indicated for each sequence used. The *groEL* sequence of *Anaplasma phagocytophilum* (accession no. AF383225) was chosen as an outgroup in the phylogenetic tree. Scale bar indicates estimated evolutionary distance.

mikurensis–positive rodents in our study were collected in close proximity to human dwellings. Thus, we are currently collecting *I. ricinus* ticks in the same region of France where we trapped the bank voles to determine whether ticks are a possible vector and a source of transmission of *Candidatus* N. mikurensis to humans.

In addition, nephropatia epidemica, a hemorrhagic fever caused by Puumala hantavirus, is endemic in the geographic region from which the bank voles in our study were collected. The symptoms for nephropatia epidemica (body aches, chills, sweats, fatigue, and high fever) are mild and could be confused with those caused by infection with *Candidatus* N. mikurensis. Diagnosis of *Candidatus* N. mikurensis infection relies only on PCR amplification of the bacterial DNA. The absence of serologic tests for *Candidatus* N. mikurensis, combined with the lack of knowledge relating to these bacteria among medical practitioners, makes diagnosis of *Candidatus* N. mikurensis infection particularly difficult. Thorough surveillance and improved diagnostic tools are required to gain more insight into the relevance of *Candidatus* N. mikurensis to public health.

Acknowledgments

We thank Yannick Chaval, Anne Xuereb, Alexis Ribas-Salvador, and Marie-Lazarine Pouille for assisting with fieldwork. We also thank the Tiques et Maladies à Tiques group of Réseau Ecologie des Interactions Durables for stimulating discussion and support.

This study was partially funded by European Union grant FP7-261504 EDENext, and it is catalogued by the EDENext Steering Committee as EDENext049 (www.edenext.eu).

Dr Vayssier-Taussat is the head of a research team at Institut National de la Recherche Agronomique. Her area of interest is tick-borne bacteria, especially the development of molecular tools to identify tick and animal pathogens and to elucidate their mechanisms of infection.

References

- Jones KE, Patel NG, Levy MA, Storeygard A, Balk D, Gittleman JL, et al. Global trends in emerging infectious diseases. *Nature*. 2008;451:990–3. <http://dx.doi.org/10.1038/nature06536>
- Heyman P, Cochez C, Hofhuis A, van der Giessen J, Sprong H, Porter SR, et al. A clear and present danger: tick-borne diseases in Europe. *Expert Rev Anti Infect Ther*. 2010;8:33–50. <http://dx.doi.org/10.1586/eri.09.118>
- Alekseev AN, Dubinina HV, Van De Pol I, Schouls LM. Identification of *Ehrlichia* spp. and *Borrelia burgdorferi* in *Ixodes* ticks in the Baltic regions of Russia. *J Clin Microbiol*. 2001;39:2237–42. <http://dx.doi.org/10.1128/JCM.39.6.2237-2242.2001>
- Brouqui P, Sanogo YO, Caruso G, Merola F, Raoult D. *Candidatus Ehrlichia walkerii*: a new *Ehrlichia* detected in *Ixodes ricinus* tick collected from asymptomatic humans in northern Italy. *Ann N Y Acad Sci*. 2003;990:134–40. <http://dx.doi.org/10.1111/j.1749-6632.2003.tb07352.x>
- Pan H, Liu S, Ma Y, Tong S, Sun Y. *Ehrlichia*-like organism gene found in small mammals in the suburban district of Guangzhou of China. *Ann N Y Acad Sci*. 2003;990:107–11. <http://dx.doi.org/10.1111/j.1749-6632.2003.tb07346.x>
- Kawahara M, Rikihisa Y, Isogai E, Takahashi M, Misumi H, Suto C, et al. Ultrastructure and phylogenetic analysis of “*Candidatus Neoehrlichia mikurensis*” in the family *Anaplasmataceae*, isolated from wild rats and found in *Ixodes ovatus* ticks. *Int J Syst Evol Microbiol*. 2004;54:1837–43. <http://dx.doi.org/10.1099/ijs.0.63260-0>
- Andersson M, Raberg L. Wild rodents and novel human pathogen *Candidatus Neoehrlichia mikurensis*, southern Sweden. *Emerg Infect Dis*. 2011;17:1716–8. <http://dx.doi.org/10.3201/eid1709.101058>
- Richter D, Matuschka FR. “*Candidatus Neoehrlichia mikurensis*,” *Anaplasma phagocytophilum*, and Lyme disease spirochetes in questing European vector ticks and in feeding ticks removed from people. *J Clin Microbiol*. 2012;50:943–7. <http://dx.doi.org/10.1128/JCM.05802-11>
- Jahfari S, Fonville M, Hengeveld P, Reusken C, Scholte EJ, Takken W, et al. Prevalence of *Neoehrlichia mikurensis* in ticks and rodents in questing European vector ticks and in feeding ticks removed from people. *Parasit Vectors*. 2012;5:74. <http://dx.doi.org/10.1186/1756-3305-5-74>
- Tabara K, Arai S, Kawabuchi T, Itagaki A, Ishihara C, Satoh H, et al. Molecular survey of *Babesia microti*, *Ehrlichia* species and *Candidatus Neoehrlichia mikurensis* in wild rodents from Shimane Prefecture, Japan. *Microbiol Immunol*. 2007;51:359–67.
- Welinder-Olsson C, Kjellin E, Vaht K, Jacobsson S, Wenneras C. First case of human “*Candidatus Neoehrlichia mikurensis*” infection in a febrile patient with chronic lymphocytic leukemia. *J Clin Microbiol*. 2010;48:1956–9. <http://dx.doi.org/10.1128/JCM.02423-09>
- von Loewenich FD, Geissdorfer W, Disque C, Matten J, Schett G, Sakka SG, et al. Detection of “*Candidatus Neoehrlichia mikurensis*” in two patients with severe febrile illnesses: evidence for a European sequence variant. *J Clin Microbiol*. 2010;48:2630–5. <http://dx.doi.org/10.1128/JCM.00588-10>
- Diniz PP, Schulz BS, Hartmann K, Breitschwerdt EB. “*Candidatus Neoehrlichia mikurensis*” infection in a dog from Germany. *J Clin Microbiol*. 2011;49:2059–62. <http://dx.doi.org/10.1128/JCM.02327-10>
- Guivier E, Galan M, Chaval Y, Xuereb A, Ribas Salvador A, Pouille ML, et al. Landscape genetics highlights the role of bank vole metapopulation dynamics in the epidemiology of Puumala hantavirus. *Mol Ecol*. 2011;20:3569–83.
- Gouy M, Guindon S, Gascuel O. SeaView version 4: A multiplatform graphical user interface for sequence alignment and phylogenetic tree building. *Mol Biol Evol*. 2010;27:221–4. <http://dx.doi.org/10.1093/molbev/msp259>

Address for correspondence: Muriel Vayssier-Taussat, INRA, USC Bipar, Anses, 23 Avenue du Général de Gaulle, Maisons-Alfort, France; email: mveyssier@vet-alfort.fr

The opinions expressed by authors contributing to this journal do not necessarily reflect the opinions of the Centers for Disease Control and Prevention or the institutions with which the authors are affiliated.

The Public Health Image Library (PHIL)



The Public Health Image Library (PHIL), Centers for Disease Control and Prevention, contains thousands of public health-related images, including high-resolution (print quality) photographs, illustrations, and videos.

PHIL collections illustrate current events and articles, supply visual content for health promotion brochures, document the effects of disease, and enhance instructional media.

PHIL Images, accessible to PC and Macintosh users, are in the public domain and available without charge.

Visit PHIL at <http://phil.cdc.gov/phil>.