



HAL
open science

Vitamin D deficiency down-regulates Notch pathway contributing to skeletal muscle atrophy in old Wistar rats

Carla Domingues-Costa Faria, Audrey Chanet, Jérôme Salles, Alexandre Berry, Christophe Giraudet, Véronique Patrac, Philippe Denis, Katia Bouton, Nicolas Goncalves-Mendes, Marie-Paule Vasson, et al.

► To cite this version:

Carla Domingues-Costa Faria, Audrey Chanet, Jérôme Salles, Alexandre Berry, Christophe Giraudet, et al.. Vitamin D deficiency down-regulates Notch pathway contributing to skeletal muscle atrophy in old Wistar rats. IFFC-EFLM EUROMEDLAB Paris 2015, Jun 2015, Paris, France. , 2015. <hal-01216756>

HAL Id: hal-01216756

<https://hal.science/hal-01216756v1>

Submitted on 12 Nov 2015

HAL is a multi-disciplinary open access archive for the deposit and dissemination of scientific research documents, whether they are published or not. The documents may come from teaching and research institutions in France or abroad, or from public or private research centers.

L'archive ouverte pluridisciplinaire HAL, est destinée au dépôt et à la diffusion de documents scientifiques de niveau recherche, publiés ou non, émanant des établissements d'enseignement et de recherche français ou étrangers, des laboratoires publics ou privés.



HAL Authorization

Vitamin D deficiency down-regulates Notch pathway contributing to skeletal muscle atrophy in old Wistar rats

Domingues-Faria C.^{1,2,4}, Chanet A.^{2,4}, Salles J.^{2,4}, Berry A.^{2,4}, Giraudet C.^{2,4}, Patrac V.^{2,4}, Denis P.^{3,4}, Bouton K.^{2,4}, Goncalves-Mendes N.¹, Vasson M.-P.^{1,5}, Boirie Y.^{2,6}, Walrand S.^{2,4}

Clermont Université, Université d'Auvergne, UMR 1019 INRA-UdA, Unité de Nutrition Humaine, Equipe ECREIN¹, Equipe NuTriM², Installation expérimentale de Nutrition³, CRNH-Auvergne, Clermont-Ferrand. ⁴INRA, UMR1019, UNH, CRNH Auvergne, Clermont-Ferrand. ⁵CHU Clermont-Ferrand, Centre Jean Perrin, Unité de Nutrition, CLARA, Clermont-Ferrand. ⁶CHU Clermont-Ferrand, Service de Nutrition Clinique, Clermont-Ferrand

INTRODUCTION: The aged-related decrease in skeletal muscle regeneration capacity is a contributing factor to sarcopenia [1]. Muscle regeneration depends in part on satellite cells whose reserve pool is reduced during aging [1]. The decreased activity of the Notch signalling pathway with aging likely explains the reduction in the proliferation potential of satellite cells, as this pathway is involved in self-renewal of these cells [2]. Skeletal muscle is a primary target of vitamin D action. It modulates muscle proliferation and differentiation *in vitro* and stimulates muscle regeneration *in vivo* [3-4]. The vitamin D status is positively correlated with skeletal muscle mass and function. Hypovitaminosis D frequently observed in the elderly is responsible for muscle weakness [5-6].

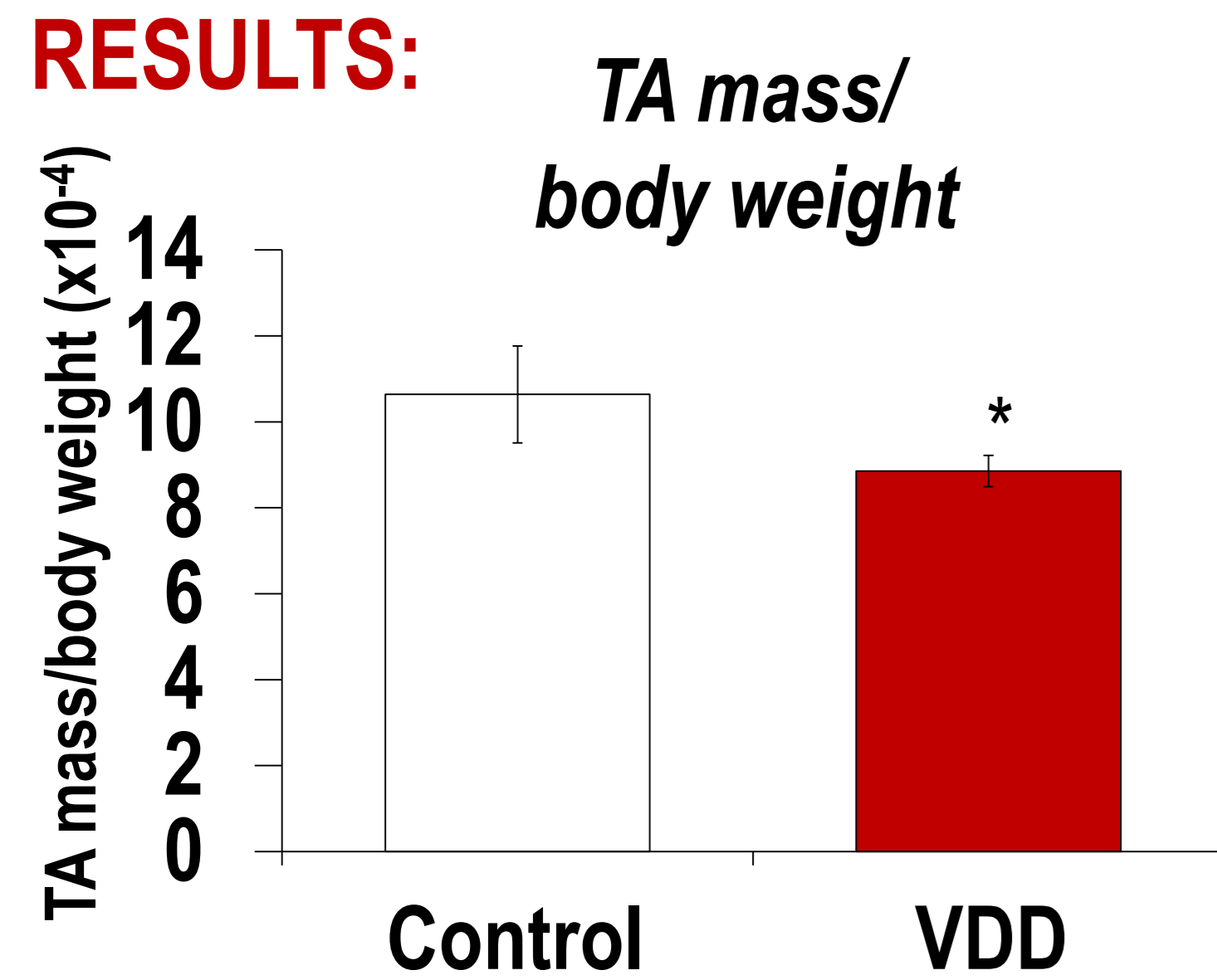
AIM OF THE STUDY: Evaluation of how vitamin D deficiency induces skeletal muscle atrophy in old rats through a reduction in Notch pathway activity and proliferation potential in muscle.

EXPERIMENTAL PROTOCOL:

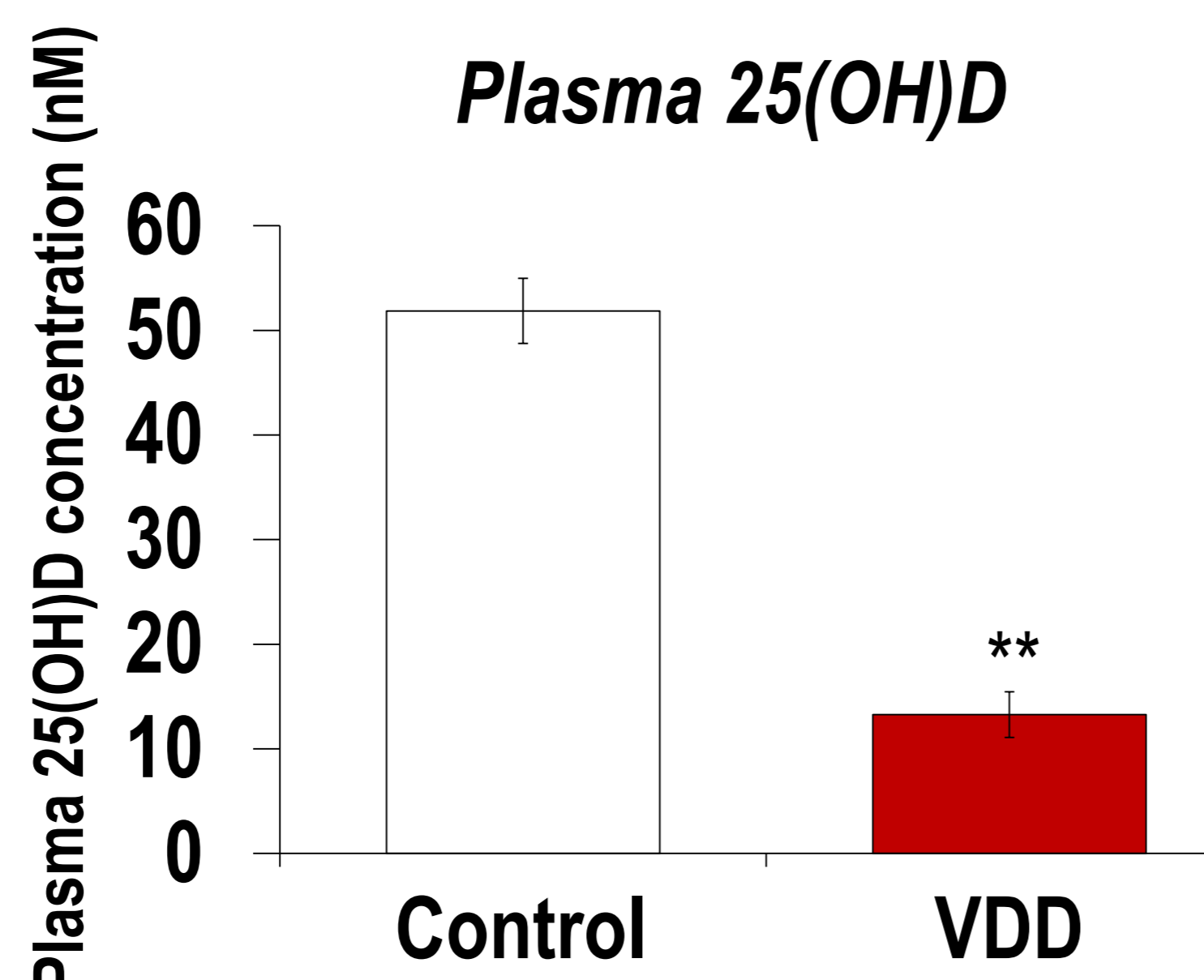


ELISA for circulating 25(OH)D measurement, qPCR for gene expressions and western-blot for protein expressions in *tibialis anterior (TA)* muscle

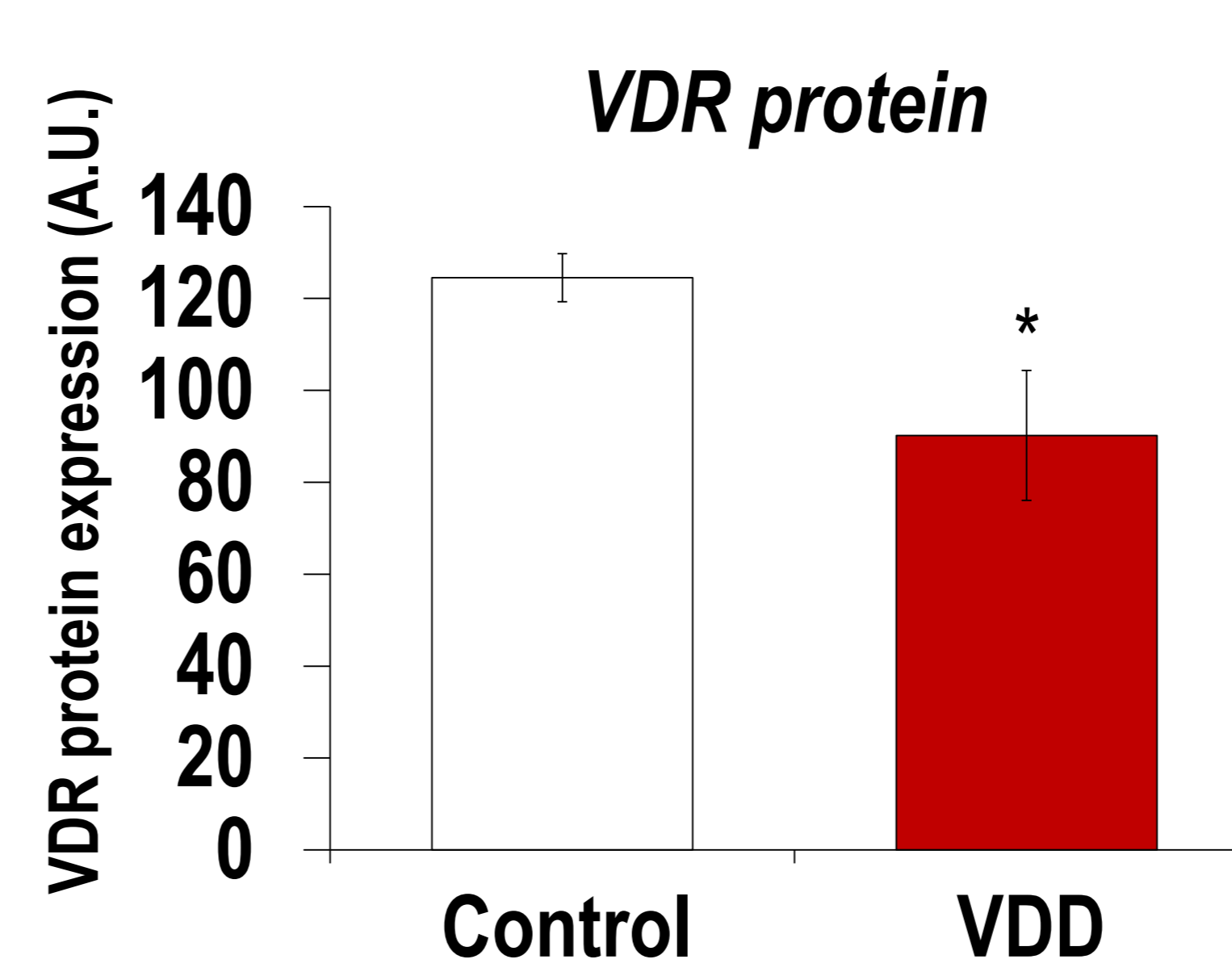
RESULTS:



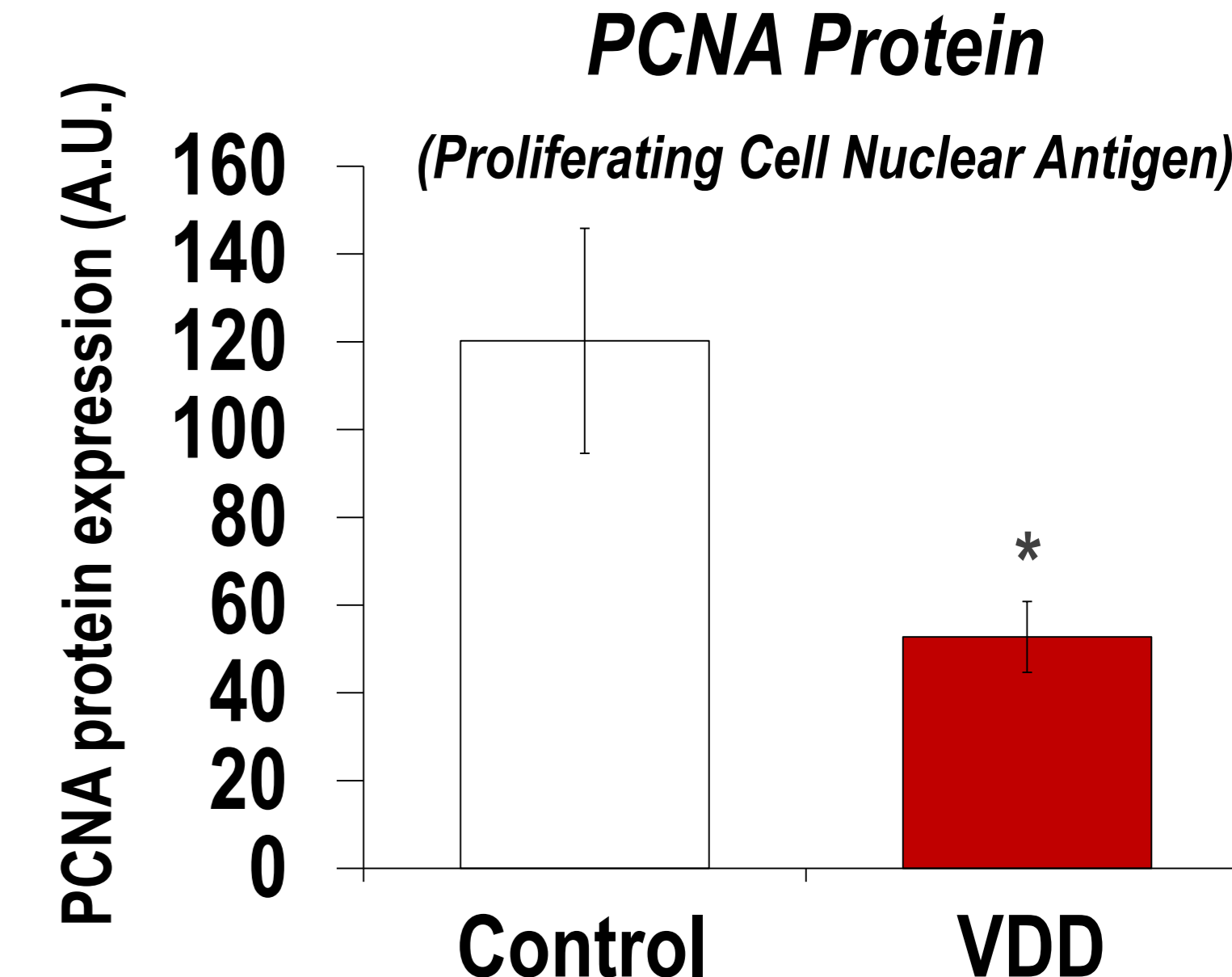
Vitamin D deficiency leads to TA mass decrease.



Plasma 25(OH)D concentration is reduced in VDD rats.

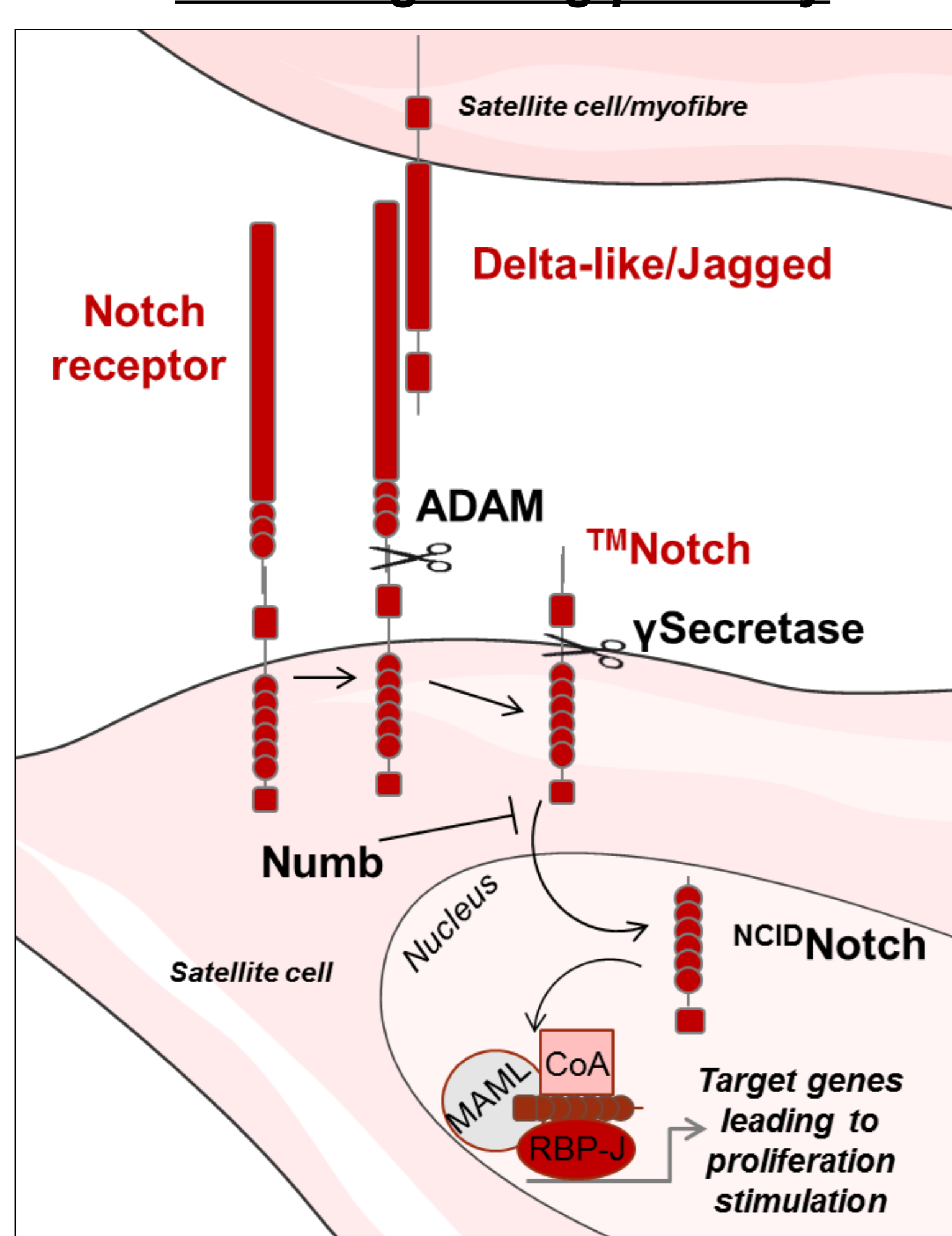


Vitamin D receptor (VDR) expression is diminished in TA of VDD rats.

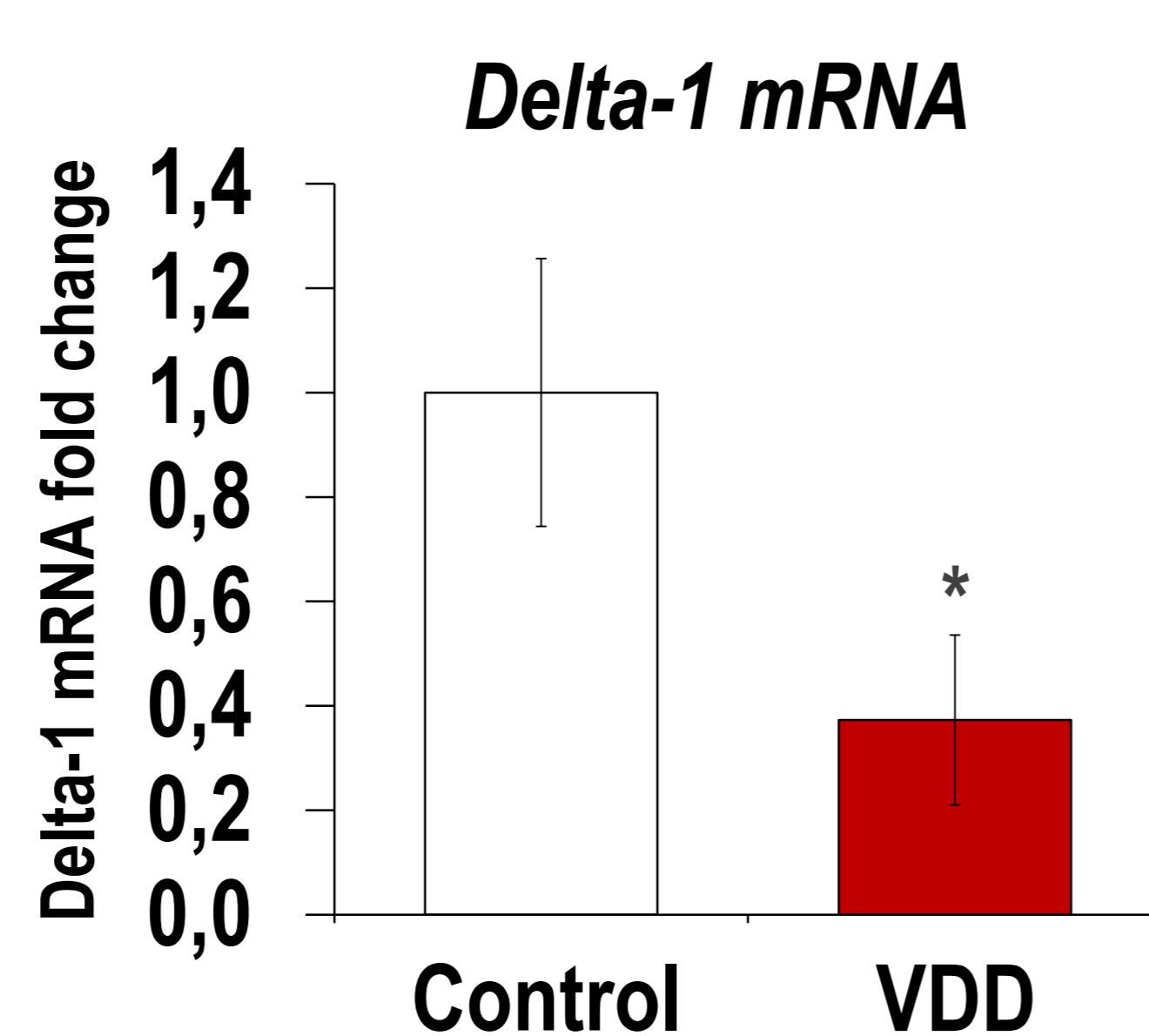


The expression of the proliferation marker PCNA is reduced in TA of VDD rats.

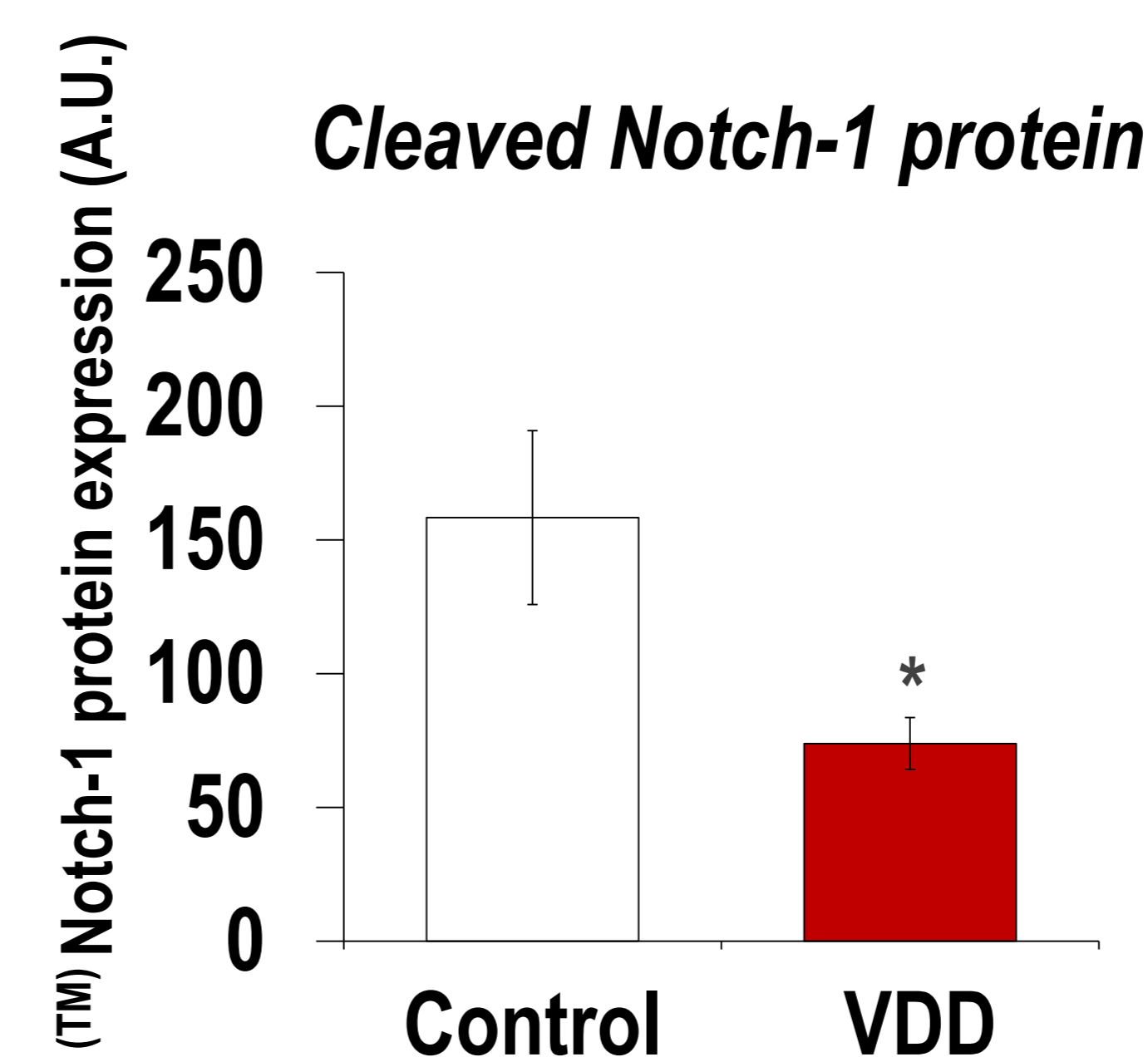
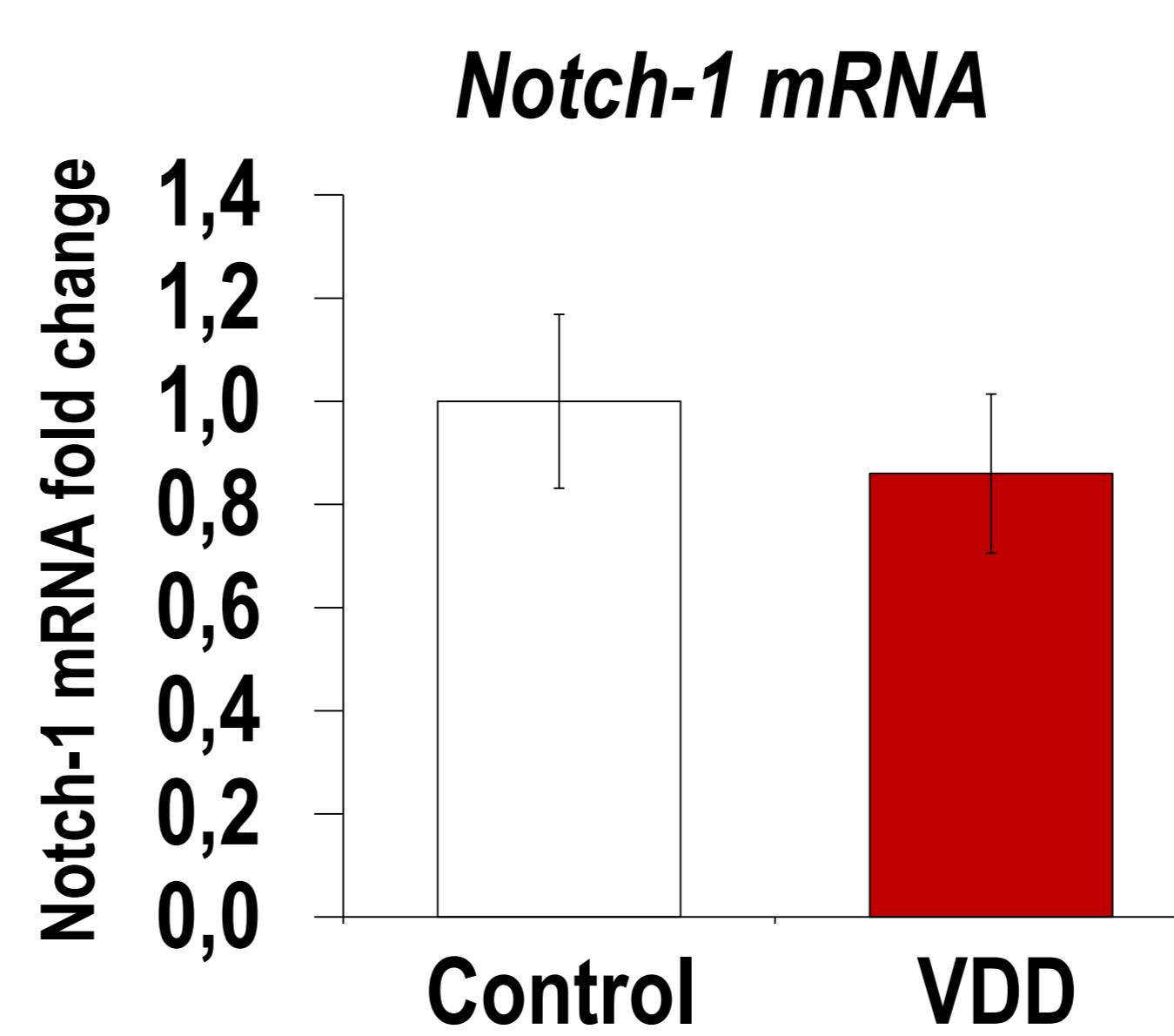
Notch signalling pathway



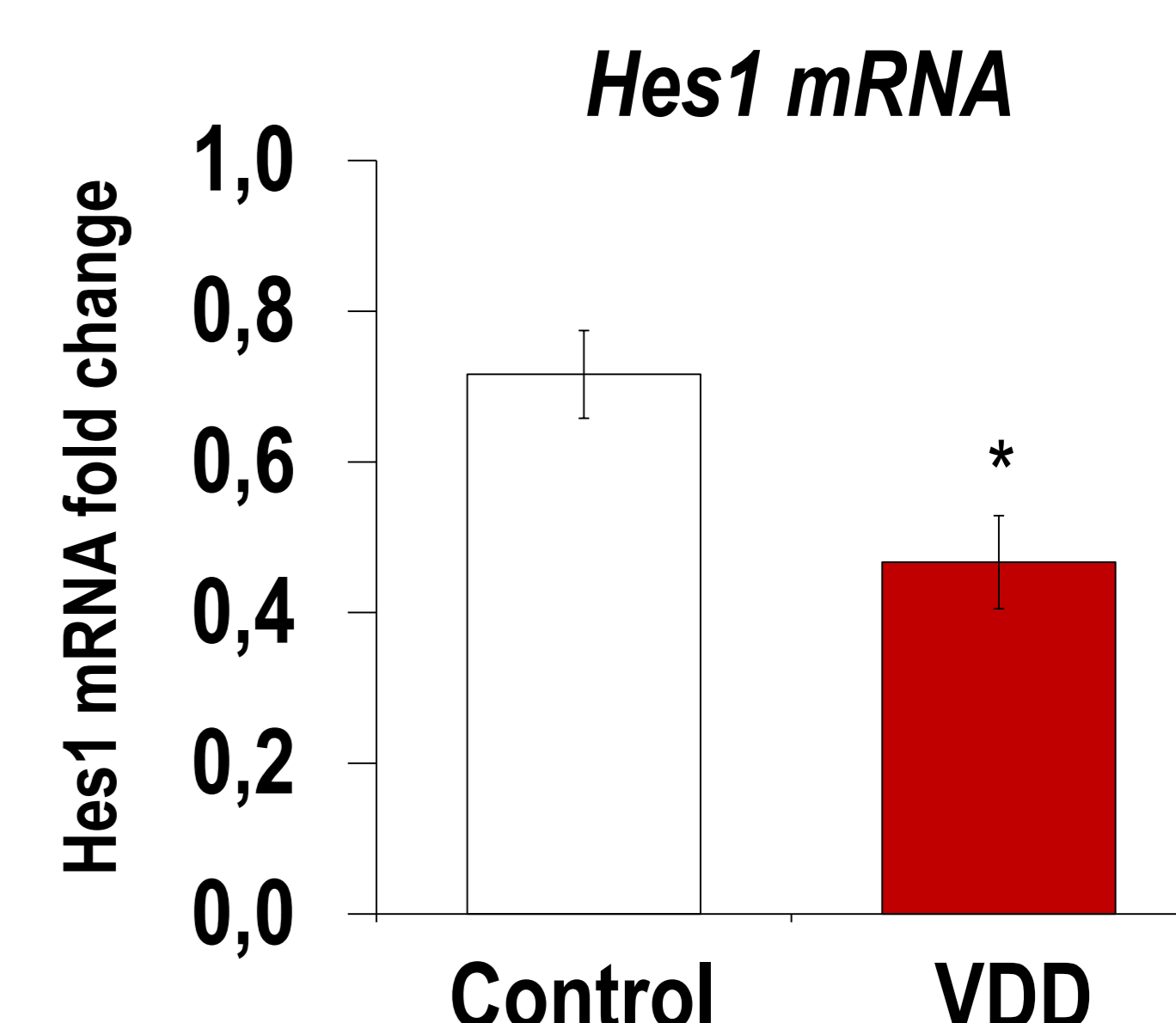
After injury, Delta-like is stimulated in satellite cells and myofibers. Delta-like binds to Notch receptor which activates Notch pathway. Then two proteolytic cleavage events occur. The first involves an ADAM protease (a Disintegrin and Metalloprotease) cleaving the Notch receptor and generating a transmembrane fragment of Notch: TMNotch. TMNotch is then cleaved by a γ-secretase complex, leading to the release of the intracellular domain of Notch: ^{NICD}Notch. ^{NICD}Notch migrates to the nucleus where it acts as a transcription factor, stimulating the expression of target genes as Hes1. These genes are involved in the inhibition of differentiation and the maintenance of cell renewal.



The gene expression of Delta1 decreases in TA of VDD old rats but the protein expression is not modified.



The gene expression of Notch-1 is not changed following vitamin D depletion. The protein expression of cleaved Notch form is reduced in TA of VDD old rats.



The gene expression of the target of Notch-1, Hes1, is reduced in TA of VDD old rats.

Notch pathway activity is diminished in TA muscle of VDD old rats.

Mean ± SEM ; Statistics : T-test of Student, * p < 0,05 ou ** p < 0,01 versus control group.

CONCLUSION : Vitamin D depletion for 9 months efficiently induced vitamin D deficiency in old rats. Vitamin D depletion induces skeletal muscle atrophy in old rats through a reduction in the proliferative ability and in Notch pathway activity in skeletal muscle. In this context, vitamin D deficiency further aggravate the age-related impaired capacity of muscle to regenerate.