



Phase Transition and Surface Sublimation of a Mobile Potts Model

A Bailly-Reyre, H.T. Diep, M Kaufman

► To cite this version:

A Bailly-Reyre, H.T. Diep, M Kaufman. Phase Transition and Surface Sublimation of a Mobile Potts Model. 2015. hal-01215853

HAL Id: hal-01215853

<https://hal.science/hal-01215853>

Preprint submitted on 15 Oct 2015

HAL is a multi-disciplinary open access archive for the deposit and dissemination of scientific research documents, whether they are published or not. The documents may come from teaching and research institutions in France or abroad, or from public or private research centers.

L'archive ouverte pluridisciplinaire **HAL**, est destinée au dépôt et à la diffusion de documents scientifiques de niveau recherche, publiés ou non, émanant des établissements d'enseignement et de recherche français ou étrangers, des laboratoires publics ou privés.

Phase Transition and Surface Sublimation of a Mobile Potts Model

A. Bailly-Reyre^{1,*}, H. T. Diep^{1,†} and M. Kaufman^{1,2‡}

¹*Laboratoire de Physique Théorique et Modélisation
Université de Cergy-Pontoise, CNRS, UMR 8089
2, avenue Adolphe Chauvin,*

95302 Cergy-Pontoise Cedex, France and

²*Permanent Address: Department of Physics, Cleveland State University, Cleveland, OH 44115, USA*

(Dated: October 15, 2015)

We study in this paper the phase transition in a mobile Potts model by the use of Monte Carlo simulation. The mobile Potts model is related to a diluted Potts model which is also studied here by a mean-field approximation. We consider a lattice where each site is either vacant or occupied by a q -state Potts spin. The Potts spin can move from one site to a nearby vacant site. In order to study the surface sublimation, we consider a system of Potts spins contained in a recipient with a concentration c defined as the ratio of the number of Potts spins N_s to the total number of lattice sites $N_L = N_x \times N_y \times N_z$. Taking into account the attractive interaction between the nearest-neighboring Potts spins, we study the phase transition as functions of various physical parameters such as the temperature, the shape of the recipient and the spin concentration. We show that as the temperature increases, surface spins are detached from the solid phase to form a gas in the empty space. Surface order parameters indicate different behaviors depending on the distance to the surface. At high temperatures, if the concentration is high enough, the interior spins undergo a first-order phase transition to an orientationally disordered phase. The mean-field results are shown as functions of temperature, pressure and chemical potential, which confirm in particular the first-order character of the transition.

PACS numbers: 05.50.+q ; 05.70.Fh ; 64.60.De

I. INTRODUCTION

Phase transition is a fascinating subject that has attracted an enormous number of investigations in various areas during the last fifty years. Much of progress has been achieved in the seventies in the understanding of mechanisms which characterize a phase transition: the renormalization group shows that the nature of a phase transition depends on a few parameters such as the space dimension, the symmetry of the order parameter and the nature of the interaction between particles [1–3].

There has been recently a growing interest in using spin systems to describe properties of dimers and liquid crystals [4]. Spin systems are used in statistical physics to describe various systems where a mapping to a spin language is possible. In two dimensions (2D) Ising-Potts models were studied extensively [5–7]. Interesting results such as hybrid transitions on defect lines were predicted with renormalization group and confirmed with Monte Carlo (MC) simulations [8]. Unfortunately, as for other systems of interacting particles, exact solutions can be obtained only for systems up to 2D with short-range interactions [9, 10]. We will focus in this paper on the q -state Potts model in three dimensions (3D) where Bazarova *et al.* have recently shown precise results for various

values of q for the localized Potts models [11]. High-temperature series expansions for random Potts models have been studied by Hellmund and co-workers [12]. Other investigations have been carried out on critical properties in the 3D site-diluted Potts model [13] and Potts spin glasses [14–18].

We are interested here in the problem of moving particles such as atoms or molecules in a crystal. To simplify, we consider the case of mobile q -state Potts spins moving from one lattice site to a nearby one. The q states express the number of internal degrees of freedom of each particle, such as molecular local orientations. We simulate the mobile 6-state Potts model on a cubic lattice. It is known that the pure Potts model in three dimensions undergoes a continuous transition for $q = 2$ and a first-order transition for $q = 3, 4, \dots$. We use here MC simulation and a theoretical analysis to elucidate properties of such a system. The mobility depends on the temperature. At low temperatures, all spins gather in a solid, compact phase. As the temperature increases, spins at the surface are detached from the solid to go to the empty space forming a gaseous phase. We show that the phase transformation goes through several steps and depends on the concentration of the Potts spins in the crystal.

The mobile Potts model presented here is expected to be equivalent to the dilute Potts model in as far as the bulk thermodynamics is concerned. The kinematics at the interface between the solid and the gas phases may be affected by the constraint that atoms move only to empty neighboring cells in the mobile model as opposed to the case where atoms move to any other vacant cell in

*E-mail: aurelien.bailly-reyre@u-cergy.fr

†E-mail: diep@u-cergy.fr

‡E-mail: m.kaufman@csuohio.edu

the diluted model.

At a sufficiently high concentration, spins are not entirely evaporated and the remaining solid core undergoes a transition to the orientationally disordered phase. We anticipate here that there is only one phase transition in the model, a first-order transition from higher-density (solid) phase with non-zero Potts order parameter to a lower-density phase with vanishing Potts order parameter. The sublimation observed below is analogous to surface melting, which in the melting of a solid can begin well below the bulk melting temperature. Details are shown and discussed in terms of surface sublimation and melting. We note in passing that direct studies of melting using continuous atomic motions are efficient for bulk melting [19–21] but they have often many difficulties to provide clear results for complicated situations such as surface melting (see references cited in Ref. 22). Using discrete spin displacements as in the present model we show that bulk melting and surface sublimation can be clearly observed. We believe that these results bear essential features of real systems.

Section II is devoted to the description of our mobile Potts model. The mobile Potts model is related to a diluted Potts model. The latter model is analyzed within the mean-field approximation for bulk properties in section III below. The two models are not identical. While in the mobile Potts model a spin can move to a void location nearby, in the diluted model there is no constraint on the proximity of the locations of the spin and the vacancy. The thermodynamics of two models may be identical in the long run, even though the kinematics may be different. Section IV is devoted to the presentation of MC simulation results. Concluding remarks are given in section V.

II. MOBILE POTTS MODEL

We consider a lattice of N_L sites. A site i can be vacant or occupied at most by a Potts spin σ_i of q states: $\sigma_i = 1, 2, \dots, q$. Potts spins can move from one site to a neighboring vacant site under effects of mutual spin-spin interaction and/or of temperature T . In order to allow for spin mobility, the number N_s of Potts spins should be smaller than N_L . Let us define the spin concentration c by $c = N_s/N_L$. The Hamiltonian is given by the Potts model:

$$\mathcal{H} = -J \sum_{i,j} \delta(\sigma_i, \sigma_j) \quad (1)$$

where J is the interaction constant between nearest neighbors (NN) and the sum is taken over NN spin pairs. To this simple Hamiltonian, we can add a chemical potential term when we deal with the system in the grand-canonical description [23] and an interaction term between neighboring vacancies (see below).

The ground state (GS) of the system described by Eq. (1) is the one with the minimum of interaction energy:

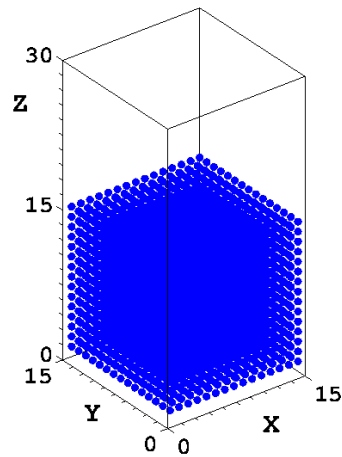


FIG. 1: (Color online) Ground state of the system with $N_x = N_y < N_z$.

each spin maximizes the number of NN of the same values. As a consequence, all spins have the same value and form a compact solid. If the lattice is a recipient of dimension $N_x \times N_y \times N_z$, then the GS is a solid with a minimum of surface spins (surface spins have higher energies than interior spins due to a smaller number of NN). In a recipient with $N_x = N_y < N_z$ with periodic boundary conditions in the xy plane and close limits on the z direction for example, the free surface is the xy surface. We show in Fig. 1 such an example.

When T is increased, surface spins are detached from the solid to go to the empty space. At high T , the solid becomes a gas. The path to go to the final gaseous phase will be shown in this paper. We start with the bulk case and examine the surface behavior in what follows.

III. MEAN-FIELD THEORY

In this section, we present the mean-field theory for the mobile Potts model. It is more convenient to work in the grand-canonical description. The results do not depend on the approaches for large systems [23]. To that end we consider a vacancy as a spin with value zero. The model becomes $(q+1)$ -state model. In addition, we add a chemical term in the Hamiltonian and rewrite it in a more general manner in the following.

A. Hamiltonian

We divide the space into M cells, of equal volume v , centered each on a site of a cubic lattice. Any cell is either vacant or occupied by a single particle characterized by a q -value spin. Neighboring particles that have the same spin value get a lower interaction energy $-J$ than if they have different spin values. Zero energy is assigned to neighboring cells that have at least a vacancy. We as-

sign an energy $-K$ to neighboring cells that are occupied irrespective of their spin values. In the grand canonical ensemble we allow for fluctuating number of particles and include in the Hamiltonian a single site (cell) term proportional to the chemical potential H if there is a particle at the cell. This model can be described by assigning at each site a $(q+1)$ -Potts spin $\sigma = 0, 1, \dots, q$. The zero value corresponds to vacancy while the values $1, 2, \dots, q$ correspond to a particle having a spin. The Hamiltonian is

$$\begin{aligned} -\frac{\mathcal{H}}{k_B T} = & J \sum_{i,j} \delta(\sigma_i, \sigma_j) [1 - \delta(\sigma_i, 0)] [1 - \delta(\sigma_j, 0)] \\ & + K \sum_{i,j} [1 - \delta(\sigma_i, 0)] [1 - \delta(\sigma_j, 0)] \\ & + H \sum_i [1 - \delta(\sigma_i, 0)] \end{aligned} \quad (2)$$

This corresponds to the grand canonical ensemble: fixed temperature T , chemical potential $H = \mu/k_B T$ and volume V .

B. Mean-Field Theory

The mean-field theory of the diluted Potts model [24] is exact for the equivalent-neighbor lattice. The thermodynamic potential divided by M is proportional to the pressure:

$$-pv = \frac{\Omega}{M} = -k_B T \frac{\ln Z}{M} = k_B T \min(\Psi) \quad (3)$$

where

$$\begin{aligned} \Psi = & \frac{J}{2} (m_1^2 + m_2^2 + m_q^2 + \dots) \\ & - \ln(1 + e^{Jm_1+H} + e^{Jm_2+H} + \dots + e^{Jm_q+H}) \end{aligned} \quad (4)$$

Note that the above equations is for $K = 0$. The optimization equations are

$$m_a = \frac{e^{Jm_a+H}}{1 + e^{Jm_1+H} + e^{Jm_2+H} + \dots + e^{Jm_q+H}} \quad (5)$$

for $a = 1, \dots, q$. The m_a gives the average number of particles of spin a normalized by the total number of sites (cells) M . The number of particles normalized by M is

$$n = \sum_{a=1}^q m_a = \sum_{a=1}^q \frac{e^{Jm_a+H}}{1 + e^{Jm_1+H} + e^{Jm_2+H} + \dots + e^{Jm_q+H}} \quad (6)$$

Assuming the ordering of the Potts spin to occur in state 1, we parameterize the m 's as follows

$$m_1 = \frac{n}{q} + (q-1)m ; \quad m_2 = m_3 = \dots = m_q = \frac{n}{q} - m \quad (7)$$

The optimization equations (5)-(6) are now

$$\frac{qm}{n} = \frac{e^{Jqm} - 1}{e^{Jqm} + q - 1} \quad (8)$$

$$n = \frac{e^{J(n/q-m)+H} (e^{Jqm} + q - 1)}{e^{J(n/q-m)+H} (e^{Jqm} + q - 1) + 1} \quad (9)$$

In the following we denote $mq/n = X$. The energy U scaled by M , number of cells, is

$$U = -\frac{1}{2} \sum_{a=1}^q m_a^2 = -\frac{n^2}{2q} - \frac{(q-1)n^2 X^2}{2q} \quad (10)$$

The specific heat at fixed number of particles n is

$$C_v = \frac{dU}{dT} = -\frac{q-1}{2q} n^2 \frac{dX^2}{dT} \quad (11)$$

The second optimization equation, Eq. (9), provides a formula for the chemical potential, since $H = \mu/T$,

$$\mu = T \ln \frac{n}{1-n} + T \ln \frac{1-X}{q} - \frac{n(1-X)}{q} \quad (12)$$

The pressure p is obtained from Eq. (3)

$$pv = -\frac{n^2}{2q} [1 + (q-1)X^2] - T \ln(1-n) \quad (13)$$

Note in the disordered (gas) phase $X = 0$ and $n \ll 1$. The equation of state reduces to the ideal gas equation $pv = nT$. The entropy S normalized by M is obtained from the thermodynamic Euler equation

$$\begin{aligned} S = & \frac{u + pv - \mu n}{T} = -n \ln(n) - (1-n) \ln(1-n) \\ & - n \ln \frac{1-X}{q} - \frac{n^2}{qT} [(q-1)X^2 + X] \end{aligned} \quad (14)$$

The model exhibits a first-order phase transition tied to the Potts q -state transition. In Fig. 2 we show n by curve 1 (red) and the order parameter $Q = qm$ [see Eq. (7)] by curve 2 (blue) as functions of T for fixed chemical potential $\mu = -0.4$ (Fig. 2b). Increasing the chemical potential reduces the discontinuity in n as seen for $\mu = -0.3$ (Fig. 2a). While, decreasing the chemical potential below $\mu = -0.5$ destroys order at all temperatures as seen for $\mu = -0.51$ (Fig. 2c).

This is understood by comparing the energy of any pair (i, j) in the ordered (solid) phase $E_{i,j} = J + 2H$ to the energy in the disordered (gaseous) phase $E_{i,j} = 0$. The two energies cross when $H = -0.5J$, or when $\mu = -0.5$.

The phase diagram in the (T, μ) plane shown in Fig. 3 includes an ordered (solid) phase (low T and high μ) and a disordered (gas) phase. The two phases are separated by a line of first-order transitions.

In the limit of large chemical potential the number of vacancies becomes negligible and thus the model reduces to the q -state Potts model. As a result the transition line approaches $T = 0.25$.

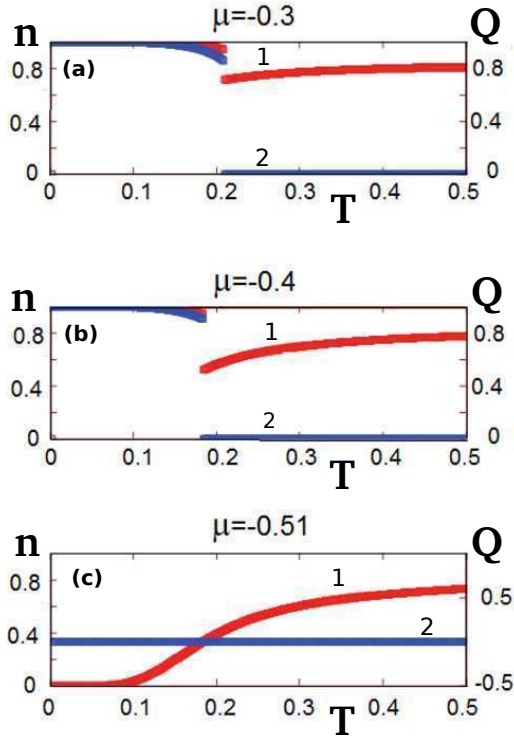


FIG. 2: (Color online) Average number of particles per site n (curve 1, red, left scale) and order parameter Q (curve 2, blue, right scale) versus temperature T with (a) $\mu = -0.3$, (b) $\mu = -0.4$, (c) $\mu = -0.51$. See text for comments.

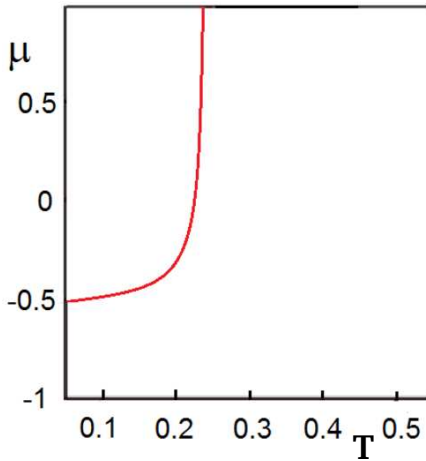


FIG. 3: (Color online) Phase diagram in the plane (T, μ) . The solid line is a first-order transition line.

The phase diagram in the temperature-pressure plane is shown in Fig. 4.

Isotherms pressure p vs n are shown in Fig. 5. For $T = 0.25$ there is no phase transition while for $T = 0.23$,

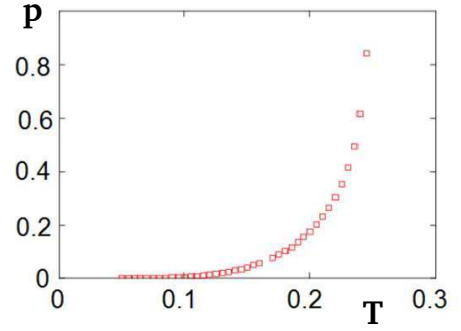


FIG. 4: (Color online) Phase diagram in the plane (T, p) .

0.2, 0.18 the first order-transitions line is crossed. As a result, we see the gap in the density n .

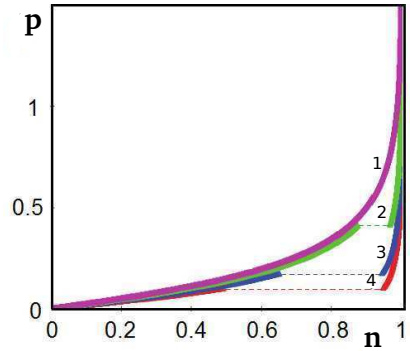


FIG. 5: (Color online) Isotherms (p, n) are shown by thick curves for $T = 0.25$ (curve 1, violet), 0.23 (curve 2, green), 0.2 (curve 3, blue) and 0.18 (curve 4, red). Thin broken lines indicate discontinuities of n .

The higher n branch corresponds to the ordered solid. Note that the solid exists only for n large enough ($n > 0.95$). In other words the presence of 5% vacancies destroys the solid. This is summarized in the phase diagram in the (T, n) plane shown in Fig. 6. The two lines represent the densities of the solid (red squares) and of the gas (blue circles). The two branches coalesce at a temperature of 0.25. Note that this is not a critical point but the end of the thermodynamic space as it occurs in the limit of infinite chemical potential (i.e. no vacancies).

Entropy and energy versus temperature and chemical potential are shown in Fig. 7.

The fundamental equation, chemical potential as a function of temperature and pressure, is concave as required by the second law of thermodynamics (thermodynamic stability). It is a continuous function and the first-order transitions manifest as discontinuities in slope of the chemical potential when graphed against temperature and pressure (Fig. 8).

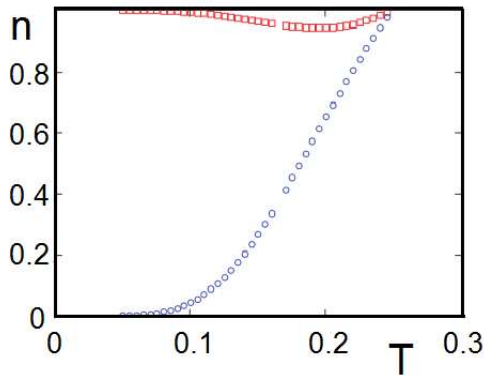


FIG. 6: (Color online) Phase diagram in the plane (T, n) . See text for comments.

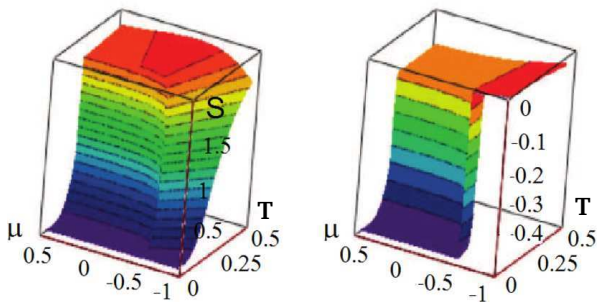


FIG. 7: (Color online) Entropy (left) and energy (right) as functions of temperature and chemical potential.

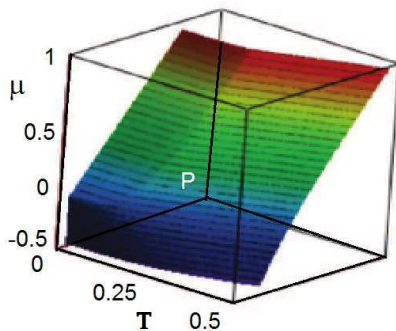


FIG. 8: (Color online) Surface in the space “temperature, pressure and chemical potential”.

IV. MONTE CARLO RESULTS

In this section, we present our results from MC simulations. The method can be briefly described as follows. At a given T , we take a spin and calculate its interaction energy with its NN. We then move it to one of nearby vacant sites chosen at random, change its state chosen at

random among q states. We calculate its “new energy”. If this is lower than its old energy, then the new spin state and new position are accepted. Otherwise, we use the Metropolis criterion [25] to accept or reject its new situation. We repeat this update procedure for all spins: such a system sweeping is called one MC step (MCS).

In our simulations, we used 10^5 MCS/spin to equilibrate the system before averaging physical quantities over the following 10^6 MCS/spin. We have verified that longer MC run times do not change the results. We used various system sizes and shapes to examine finite-size and shape effects on the results.

A. Transition

We study here the melting behavior of a solid contained in a recipient described in section II. The recipient has the dimension $N_x = N_y < N_z$ and is filled with molecules (Potts spins) in the lower part of the recipient. The number of filled layers is smaller than N_z (Fig. 1). Molecules under thermal effect can be evaporated from the upper surface to the empty space. To study the behavior of such a system, we choose to heat the system from low to high T . Cooling the system from a random initial configuration, namely molecules in a gas state with positions distributed over all space, will result in a compact solid phase at low temperature but the surface of this solid is not so flat so that the system energy is about 5% higher than the GS energy shown in Fig. 1. However, the system behavior at higher T as well as the phase transition are the same as obtained by heating. We will show this later.

Let us show now results for a lattice of $15 \times 15 \times 30$ sites where only the fifteen first layers in the z direction are filled ($c = 50\%$) in the GS configuration shown in Fig. 1. As said above, this configuration corresponds to the one with a minimal free surface when the system is in the solid state.

Our simulation in real time shows that when T increases atoms on the surface are progressively evaporated. The solid core of the system remains in a Potts spin order, though its volume is little by little reduced with increasing T . At a high enough value of T , say T_c , the Potts orientational order of the solid core is broken. However, the spins still stay in the solid state up to a very high T when the whole system melts to a gas (or liquid) phase. We will show later evidence of such a change of the system at several T with snapshots and corresponding distributions of the NN number.

The magnetization M versus T is displayed in Fig. 9 where M indicates a perfect order at low T . When T is increased M decreases linearly with T : a careful examination of the system dynamics reveals that this regime corresponds to the evaporation of surface spins. This regime ends with a discontinuity of M at a transition temperature $T_c \simeq 1.234$.

The discontinuity at T_c indicates a first-order phase

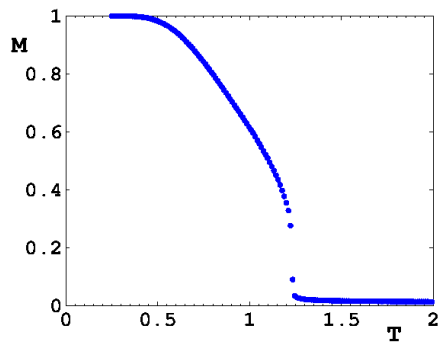


FIG. 9: (Color online) Magnetization M versus temperature T (in unit of J/k_B) for a lattice of $15 \times 15 \times 30$ sites with a spin concentration $c = 50\%$. The system is completely ordered at $T = 0$, then surface spins are little by little evaporated with increasing T . The phase transition of spin orientations of the solid core occurs at $T_c \simeq 1.234$.

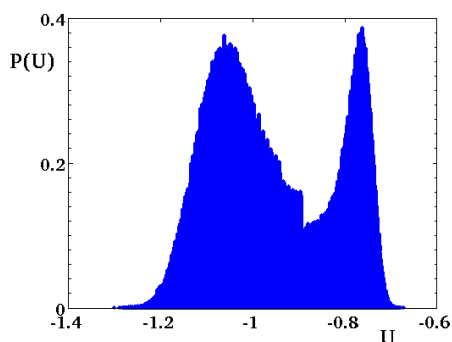


FIG. 10: (Color online) Energy histogram $P(U)$ recorded at $T_c = 1.234$ for a lattice $15 \times 15 \times 30$ with $c = 50\%$. The presence of the two peaks indicates that the transition is of first order.

transition. We have verified this by recording the energy histogram $P(U)$ at the transition temperature $T_c = 1.234$. The double-peak structure shown in Fig. 10 confirms the first-order character of the transition. Note that disordered evaporated atoms, namely atoms outside the system solid core, do not participate in the transition.

We have studied the finite-size effect on the transition at $c = 50\%$. Since the shape of the recipient has a strong effect on the phase transition as seen below, we have kept the same recipient shape to investigate the finite-size effect: to compare results at the same concentration with those of the lattice $15 \times 15 \times 30$ sites, we have used lattices of $20 \times 20 \times 40$, $25 \times 25 \times 50$, $30 \times 30 \times 60$ and $35 \times 35 \times 70$ sites in which half of the recipient is filled with spins, namely $c = 50\%$. We show in Fig. 11 the magnetization and the energy versus T for several sizes.

Figure 11 shows that the transition looks like a second-order transition when the size of the box is small. This is a well-known finite-size effect: when the linear size of a system is smaller than the correlation length at the transition, the system behaves as a second-order transition.

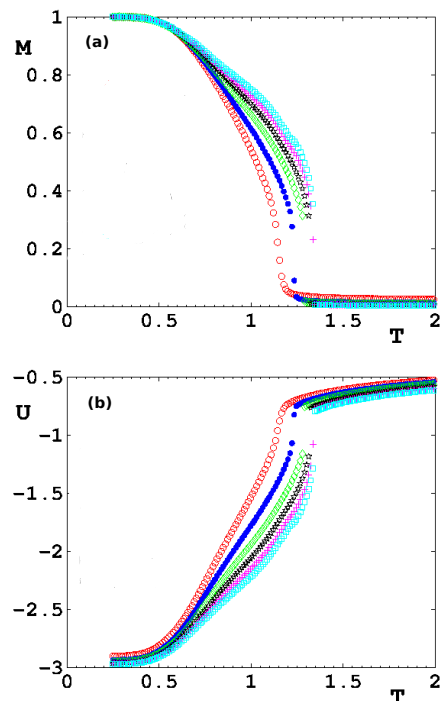


FIG. 11: (Color online) Comparison of the evolution of (a) the magnetization and (b) the energy versus the temperature of a half-filled lattice $N_x \times N_y \times N_z$ for several sizes $N_x = N_y = N_z/2 = 20$ (red void circles), 30 (blue filled circles), 40 (green void diamonds), 50 (black stars), 60 (magenta crosses) and 70 (sky-blue void squares).

We have to use therefore a finite-size scaling to ensure that the transition is of first order. To do this, let us show the transition temperatures for systems at various sizes in Fig. 12. By fitting simulation results with the finite-scaling formula

$$T_c(L) = T_c(\infty) + \frac{A}{L^\alpha}$$

we find the following best nonlinear least mean square fit with the relative change of the last (8th) iteration less than -1.30954×10^{-10} :

$$T_c(\infty) = 1.35256 \pm 0.004089 \quad (0.3023\%),$$

$$\alpha = 2.9, \quad A = -2335.24 \pm 170.9 \quad (7.316\%).$$

This is shown by the continued line in Fig. 12.

Several remarks are in order: (i) the value of α indicates that, within statistical errors, $T_c(L)$ does scale with the system volume L^3 as it should for a first-order transition [11, 26], (ii) our value of $T_c(\infty)$ is in excellent agreement with that found for the localized model $T_c = 1.35242 \pm 0.00001$ obtained with the state-of-the-art multi-canonical method [11] with periodic boundary conditions in three directions (note that in the original paper

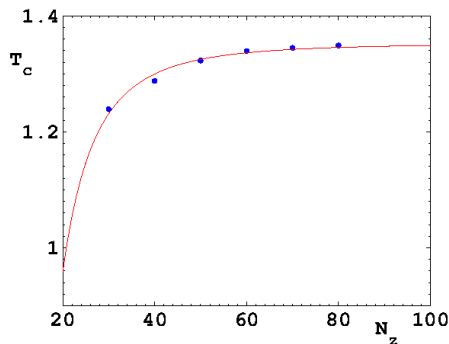


FIG. 12: (Color online) Transition temperature versus lattice size $N_x \times N_y \times N_z$ at $c = 50\%$ where $N_x = N_y = N_z/2$, with $N_z = 30, 40, 50, 60, 70$ and 80 .

the authors have used a factor 2 in the Hamiltonian), (iii) the fact that our system follows the same finite-size scaling as the localized model confirms that the transition observed in our mobile model is triggered by the orientational disordering of Potts spins in the remaining solid core at the transition temperature.

Following the last argument, it is then obvious that if the quantity of matter remaining in the solid phase is so small due to the evaporation, then there is no transition. This should be seen if we lower the concentration.

Before showing the effect of concentration, let us show a snapshot in the case of $c = 50\%$ in Fig. 13. The transition scenario discussed above is seen in these snapshots: the observed transition is that of Potts orientational order in the solid core.

Note that unlike the crystal melting where atoms suddenly quit their low- T equilibrium positions to be in a liquid state, our model shows that the passage to the gaseous phase takes place progressively with slow evaporation, atom by atom, with increasing T .

Before showing the concentration effect let us compare results of heating and cooling. As said above, cooling the system from an initial configuration where molecules are distributed at random over the whole space results in a compact solid phase at low T shown in Fig. 1. However, this is realized only if we do a slow cooling: the final configuration at a temperature is used as initial configuration for a little bit lower temperature and so on. A rapid cooling will result in a solid with an irregular form having flat surfaces of various sizes.

B. Effect of concentration

Let us examine now results of simulations with smaller concentrations. The absence of the phase transition is seen when we decrease the concentration down to $c = 20\%$. As we can see in Fig. 14, at low temperatures, in all cases the system is in a condensed state. As T increases, the magnetization decreases faster at lower concentrations. All atoms are evaporated for small con-

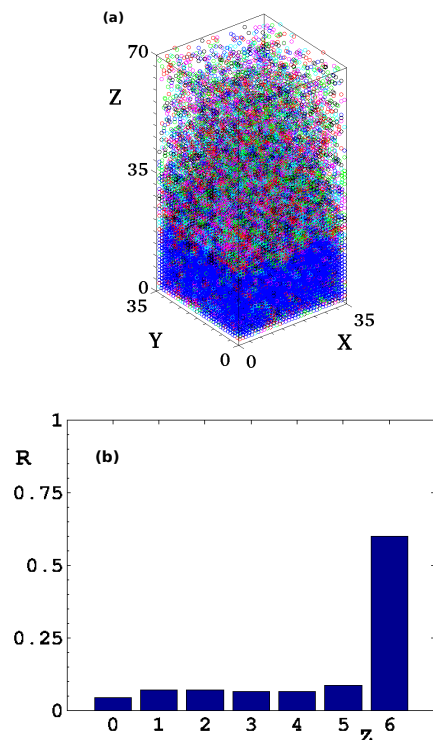


FIG. 13: (Color online) Simulation for a half filled lattice size $35 \times 35 \times 70$ ($c = 50\%$): (a) Snapshot at $T = 1.3128$ close to the transition, (b) R vs Z , R being the percentage of lattice sites having Z nearest neighbors, at $T = 1.3128$. Note that the solid phase is well indicated by the number of sites with 6 neighbors.

centrations below the Potts transition temperature.

Note, however, that for low concentrations, there is no transition but the magnetization disappears only when the very small solid core disappears, namely at $T \simeq 1.1$.

C. Surface sublimation

Let us show the results using the system size $20 \times 20 \times 40$ with $c = 50\%$. To appreciate the surface sublimation, we show also the results of the localized model where spins stay each on its site. Figure 15 shows the total magnetization and the energy per spin.

We show in Fig. 16 the diffusion coefficient D for the cases where one, two and four layers are allowed to be mobile. As seen, the evaporation is signaled by the change of curvature of D . Only when all layers are allowed to be mobile that the transition becomes really of first order with a discontinuity.

The magnetic susceptibility and the heat capacity are shown in Fig. 17 where the same observation is made: only when all layers are allowed to be mobile that the sublimation is a first-order transition. Note that the small

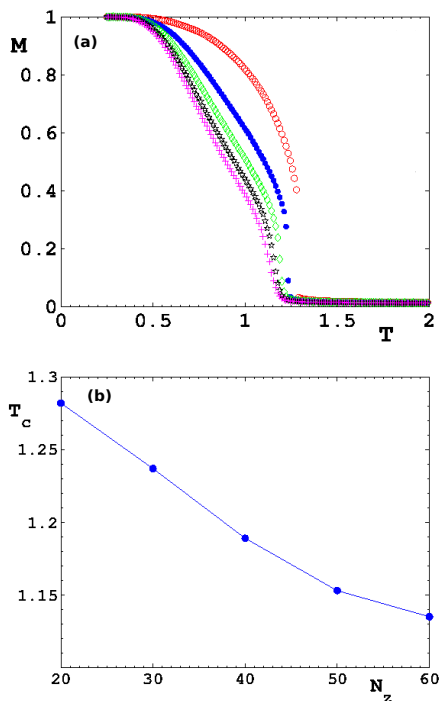


FIG. 14: (Color online) Effect of concentration: (a) Magnetization versus temperature for a lattice $15 \times 15 \times N_z$ where $N_z = 20$ (red crosses), 30 (black stars), 40 (green diamonds), 50 (blue filled circles), 60 (red void circles). For each case, only the fifteen first layers are filled, corresponding to concentrations $15/N_z$, (b) Transition temperature versus the reciprocal height N_z .

peaks at low T correspond to the surface evaporation.

We show in Fig. 18 the layer magnetization in the cases where one, two and four surface layers are mobile. As seen, the layer next to the solid substrate is “retained” by the latter up to the bulk transition occurring at $T_c \simeq 1.330$. Other layers are evaporated starting from the first layer, at temperatures well below T_c .

To close this section let us compare the results obtained for two system shapes $20 \times 20 \times 40$ and $40 \times 20 \times 20$ with $c = 50\%$. It is obvious that the second shape has a larger free surface which facilitates the evaporation. As a consequence, there is no first-order transition because the solid core disappears at a temperature lower than the Potts transition temperature $T_c \simeq 1.330$ at the size $20 \times 20 \times 40$.

V. CONCLUSION

In this paper, we studied the properties of the mobile Potts model by the use of a mean-field theory and Monte Carlo simulations. The two methods confirm the first-order character of the phase transition in the bulk with $q = 6$. As discussed in the Introduction, the mean-field approach does not consider the real-time dynamics of the

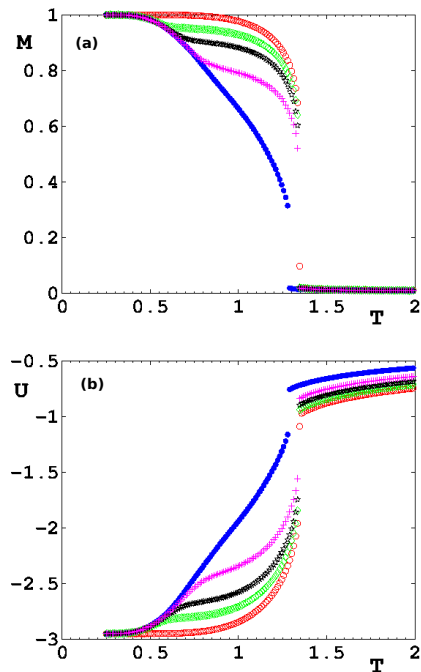


FIG. 15: (Color online) (a) Total magnetization M and (b) energy per spin U versus T . Red void circles indicate results of localized spins and blue filled circles indicate those of the completely mobile model. Between these two limits, green void diamonds, black stars and magenta crosses correspond respectively to the cases where one, two and four surface layers are allowed to be mobile.

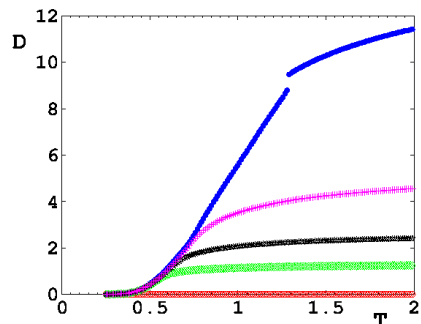


FIG. 16: (Color online) Diffusion coefficient D versus T . Red void circles (lowest curve) indicate results of localized spins and blue filled circles (topmost curve) indicate those of the completely mobile model. Between these two limits, from below green void diamonds, black stars and magenta crosses correspond respectively to the cases where one, two and four surface layers are allowed to be mobile.

particles on the lattice sites. Rather, it considers the average numbers of particles per site. In other words, it is equivalent to taking the spatial average first before considering the interaction between the particles uniformly distributed on lattice sites. Such a mean-field average is often used while dealing with disordered systems (dilution, bond-disorder, ...). In MC simulations, the local

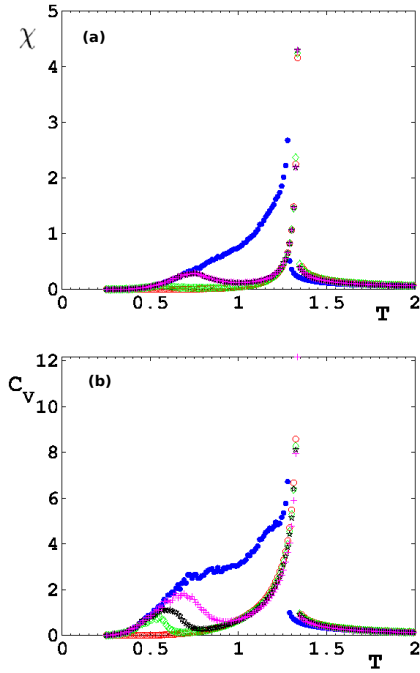


FIG. 17: (Color online) (a) Magnetic susceptibility χ and (b) heat capacity C_V versus T . Red void circles indicate results of localized spins and blue filled circles indicate those of the completely mobile model. Between these two limits, green void diamonds, black stars and magenta crosses correspond respectively to the cases where one, two and four surface layers are allowed to be mobile.

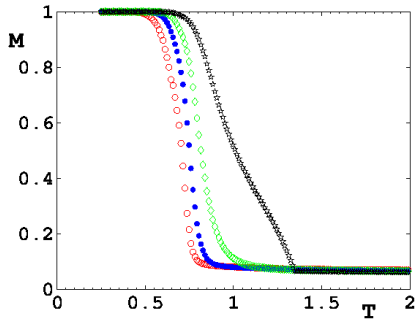


FIG. 18: (Color online) Layer magnetizations for the first four layers. Red void circles, blue filled circles, green diamonds and black stars are the magnetizations of the first, second, third and fourth layers. See text for comments.

environment of each particle is first taken into account before calculating its average over all particles. During the MC averaging, all local situations are expected to be taken into account in the final results. Hence the mean-field approximation takes the spatial average before the ensemble average, while in MC simulations the calculation is first done for each spatial particle configuration and the statistical average is next made over configurations. Furthermore the mean field approximation is

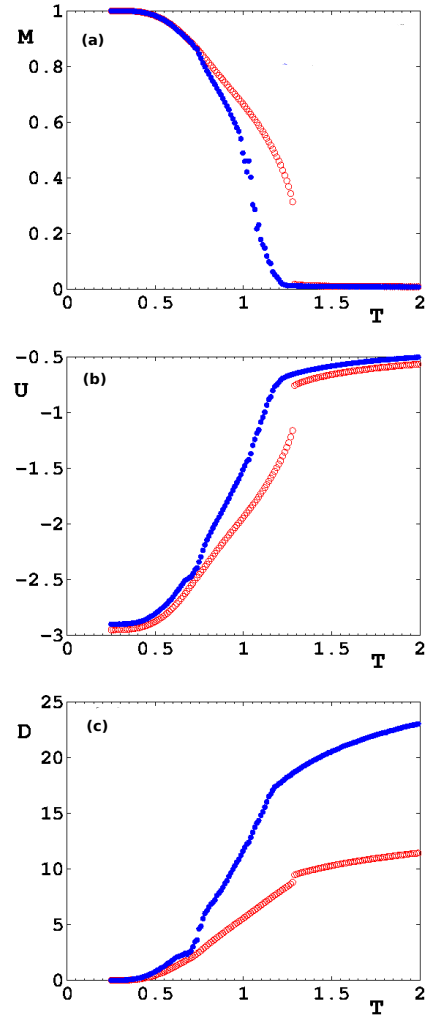


FIG. 19: (Color online) (a) Magnetization, (b) energy and (c) diffusion coefficient for two system shapes $20 \times 20 \times 40$ (red void circles) and $40 \times 20 \times 20$ (blue filled circles) at $c = 50\%$.

applied to the diluted Potts model which is somewhat different than the mobile Potts model. In the MC simulations of the mobile Potts model a particle can be moved to a nearby vacant site while in the diluted Potts model a particle could be moved to a vacant site anywhere on the lattice. This difference is expected to be important for the kinetics but not for the thermodynamics of the two models.

From a finite-size scaling we showed that the transition of an evaporating solid belongs to the $q = 6$ localized Potts model. The reason is that a portion of the low- T solid phase of the mobile Potts model still remains solid at the transition temperature of the localized Potts model so that the orientational disordering of Potts spins occurs in this solid portion before the complete melting. Mean-field results for various parameters in the phase space are shown and discussed. In particular, we showed that there exists a threshold value of the chemical potential above which there is a solid-gas transition. Monte

Carlo simulations have been carried out to study the surface evaporation behavior: we found that atoms are evaporated little by little from the surface at temperatures much lower than the bulk transition. We believe that the model presented in this paper, though simple, possesses the essential evaporation properties.

Acknowledgments

ABR acknowledges financial support from CNRS. MK is grateful for a visiting professorship's grant from the

University of Cergy-Pontoise and for the warm hospitality extended to him during this working visit.

-
- [1] K. G. Wilson, *Renormalization Group and Critical Phenomena. I. Renormalization Group and the Kadanoff Scaling Picture*, Phys. Rev. B **4**, 3174 (1971).
 - [2] D. J. Amit, *Field Theory, Renormalization Group and Critical Phenomena*, World Scientific, Singapore (1984).
 - [3] J. Zinn-Justin, *Quantum Field Theory and Critical Phenomena*, Oxford University Press (2002).
 - [4] Danh-Tai Hoang and H. T. Diep, *Phase Transition in Dimer Liquids*, J. Phys.: Condens. Matter **26**, 035103 (2014).
 - [5] F. Y. Wu, *The Potts Model*, Rev. Mod. Phys. **54**, 235-268 (1982).
 - [6] B. Nienhuis, A. N. Berker, E. K. Riedel, and M. Schick, *First- and Second-Order Phase Transitions in Potts Models*, Phys. Rev. Lett. **43**, 737-740 (1979).
 - [7] M. Kaufman, *Square Lattice Ising Model in Weak Uniform Magnetic Field: Renormalization Group Analysis*, Phys. Rev. B **36**, 3697 (1987).
 - [8] H. T. Diep and M. Kaufman, *Extended Defects in Potts-Percolation Model of a Solid: Renormalization Group and Monte Carlo Analysis*, Phys. Rev. E **80**, 31116 (2009).
 - [9] R. J. Baxter, *Exactly Solved Models in Statistical Mechanics*, Academic, New York (1982).
 - [10] H. T. Diep and Giacomini, *Exactly Solved Frustrated Models*, in *Frustrated Spin Systems*, Ed. H. T. Diep, pp. 1-58, World Scientific (2013); http://www.worldscientific.com/doi/suppl/10.1142/5697/suppl_file/5697_chap1.pdf
 - [11] Alexei Bazavova, Bernd A. Berg and Santosh Dubey, *Phase Transition Properties of 3D Potts Models*, Nucl. Phys. B **802**, 421-434 (2008).
 - [12] M. Hellmund, W. Janke, *High-Temperature Series Expansions for Random Potts Models*, Condensed Matter Physics **8**, p. 5974 (2005).
 - [13] A. K. Murtazaev, A. B. Babaev and G. Ya. Aznaurova, *Investigation of the Critical Properties in the 3d Site-Diluted Potts Model*, Solid State Phenomena **152-153**, 571 (2009).
 - [14] E. Ilker and A. N. Berker, *Odd q-state clock spin-glass models in three dimensions, asymmetric phase diagrams, and multiple algebraically ordered phases*, Physical Review E **90** (2014).
 - [15] Jayanth R. Banavar and Alan J. Bray, *Heisenberg and Potts spin glasses: A renormalization-group study*, Phys. Rev. B **38**, 2564 (1988).
 - [16] D. J. Gross, I. Kanter and H. Sompolinsky, *Mean-Field Theory of the Potts Glass*, Phys. Rev. Lett. **55**, 304 (1985).
 - [17] C. Güven, A. N. Berker, M. Hinczewski, and H. Nishimori, *Reentrant and forward phase diagrams of the anisotropic three-dimensional Ising spin glass*, Phys. Rev. E **77**, 061110 (2008).
 - [18] H. O. Georgii, S. Miracle-Sole, Jean Ruiz and V. A. Zagrebnov, *Mean-field of the Potts Gas*, J. Phys. A: Math. Gen. **39**, 9045 (2006).
 - [19] L. Gomez, A. Dobry and H. T. Diep, *Monte Carlo simulation of the role of defects as a melting mechanism*, Phys. Rev. B **63**, 224103-1 (2001).
 - [20] L. Gomez, A. Dobry, H. T. Diep, Ch. Geuting and L. Burakowsky, *Defect Lines as Precursor of Melting of Crystalline Solids as observed in Monte Carlo Simulation*, Phys. Rev. Lett. **90**, 095701 (2003).
 - [21] Virgile Bocchetti and H. T. Diep, *Melting of Rare-Gas Crystals: Monte Carlo Simulation versus Experiments*, J. Chem. Phys. **138**, 104122 (2013).
 - [22] Virgile Bocchetti and H. T. Diep, *Monte Carlo Simulation of Melting and Lattice Relaxation of the (111) Surface of Silver*, Surface Science **614**, 46 (2013).
 - [23] H. T. Diep, *Statistical Physics: Fundamentals and Application to Condensed Matter, Lectures, Problems and Solutions*, World Scientific, Singapore (2015).
 - [24] M. Kaufman and M. Kardar, *Short-range and infinite-range bond percolation*, Phys. Rev. B **29**, 5053-5059 (1984).
 - [25] K. Binder and D. W. Heermann, *Monte Carlo Simulation in Statistical Physics*, Springer-Verlag, Berlin (1992).
 - [26] M. N. Barber, Finite-Size Scaling, in C. Domb and J. L. Lebowitz *Phase Transitions and Critical Phenomena*, Vol. 8, Academic Press, 146-268 (1983).