



**HAL**  
open science

# The origin of the Solar System in the field of a standing sound wave

Valeri Beck

► **To cite this version:**

| Valeri Beck. The origin of the Solar System in the field of a standing sound wave. 2015. <hal-01205715>

**HAL Id: hal-01205715**

**<https://hal.science/hal-01205715v1>**

Preprint submitted on 26 Sep 2015

HAL is a multi-disciplinary open access archive for the deposit and dissemination of scientific research documents, whether they are published or not. The documents may come from teaching and research institutions in France or abroad, or from public or private research centers.

L'archive ouverte pluridisciplinaire HAL, est destinée au dépôt et à la diffusion de documents scientifiques de niveau recherche, publiés ou non, émanant des établissements d'enseignement et de recherche français ou étrangers, des laboratoires publics ou privés.



Distributed under a Creative Commons CC BY-NC-ND 4.0 - Attribution - Non-commercial use - No Derivative Works - International License

# The origin of the Solar System in the field of a standing sound wave

Valeri Beck<sup>1,\*</sup>

<sup>1</sup>Independent scientist, Berlin, Germany

\*v.beck@alfa-carbon.de

## ABSTRACT

According to the planetary origin conceptual model proposed in this paper, the protosun centre of the pre-solar nebula exploded, resulting in a shock wave that passed through it and then returned to the centre, generating a new explosion and shock wave. Recurrent explosions in the nebula resulted in a spherical standing sound wave, whose antinodes concentrated dust into rotating rings that transformed into planets. The extremely small angular momentum of the Sun and the tilt of its equatorial plane were caused by the asymmetry of the first, most powerful explosion. Differences between inner and outer planets are explained by the migration of solid matter, while the Oort cloud is explained by the division of the pre-solar nebula into a spherical internal nebula and an expanding spherical shell of gas. The proposed conceptual model can also explain the origin and evolution of exoplanetary systems and may be of use in searching for new planets.

## 1 Introduction

The classical theory of the origin of the Solar System is based on the Kant–Laplace nebular hypothesis<sup>1,2</sup> suggesting that the Sun and the planets condensed out of a spinning nebula of gas and dust. During the condensation process, the spin of the nebula accelerated (the 'pirouette' effect), and the resulting distribution of angular momentum caused it to form a disc. The centre of the nebula evolved into a hot, highly compressed gas region – the protosun. Concentration and coalescence of dust particles in the remainder of the spinning disc led to the formation of planets orbiting the Sun.

This theory accounts for the general nature of the origin of the Solar System, but it cannot explain many of the observed facts. One problem is the angular momentum distribution: the Sun has more than 99.8% of the entire system mass, but only about 0.5% of the total angular momentum, with the remaining 99.5% residing in the orbiting planets. The hypothesis also fails to explain the 7° tilt of the Sun's equatorial plane relative to the average orbital plane of the planets. Another serious problem is the distinction between small solid-surface inner planets and outer gas giants. Moreover, the observed regularity in planetary distances from the Sun – the so-called Titius–Bode law – has no explanation.

It is difficult to explain the existence of the Oort cloud beyond the Solar System's planets. It consists of trillions of small objects composed of dust and water, ammonia and methane ice and it is believed that these objects were scattered outwards by the gas giants at the planetary formation stage and then acquired distant circular orbits (out to about one light year) as a result of gravitational forces due to nearby stars. Such an Oort cloud emergence scenario seems very unlikely for such a large number of bodies.

Neptune is the most distant gas planet. Based on the decreasing series of giant planet masses – Jupiter: 318 earth masses ( $M_{\oplus}$ ); Saturn: 95.3  $M_{\oplus}$ ; Uranus: 14.5  $M_{\oplus}$  – we could expect Neptune's mass to be several times smaller than that of Uranus. Such a mass distribution can be explained by decreasing density

of the gas nebula from the centre to the periphery, so that each planet has less gaseous substance than the previous one. In reality, Neptune has a mass of  $17.5 M_{\oplus}$ , which is greater than the mass of Uranus.

Authors such as Chamberlin (1901), Moulton (1905), Schmidt (1944), von Weizsaecker (1944), McCrea (1960), Woolfson (1964) and Safronov (1972)<sup>3-9</sup> have offered a variety of scenarios for the Solar System's formation. However, none of the existing theories is able to give a comprehensive picture of the emergence and development of the planetary system. A large number of recently discovered exoplanets (1883 confirmed planets by August 2015, NASA Exoplanet Archive<sup>1</sup>) allows us to estimate the number of planets in our galaxy as many billions, so that a comprehensive understanding of the processes leading to the emergence of planetary systems becomes critically important. In this article we present a new conceptual model of the Solar System's formation from a pre-solar gas and dust nebula in the field of a standing sound wave.

## 2 THEORETICAL CONSTRUCTION

### 2.1 A spherical standing sound wave

It is generally accepted that during a sufficiently strong process of heating, gravitational contraction in the centre of the pre-solar nebula started thermonuclear fusion of hydrogen into helium. A large amount of energy was emitted and radiation pressure prevented the further contraction of the gas nebula. However thermonuclear fusion could not start quietly, the process resulted in an explosion that caused a spherical shock wave originating from the central region. The specific explosion mechanism accompanied by the thermonuclear fusion processes is beyond the scope of this article; we note here only that the power of the explosion would have been large enough for the shock wave to spread all over the pre-solar nebula. A long time observed active processes, such as jets and outflows associated with star formation (e.g.<sup>10-18</sup>), suggests that the explosions fundamentally inherent in the birth of stars and can start the emergence of planetary systems as described in our model.

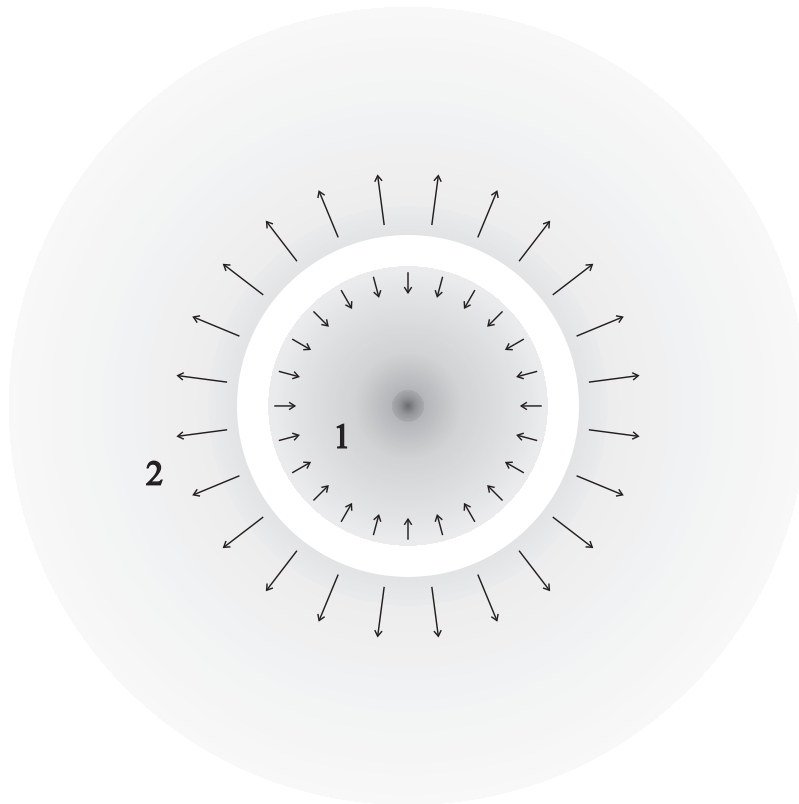
As the wave propagated, the gas particles in the pre-solar nebula oscillated radially, for two reasons: first, the difference in gas pressure; and secondly, the gravitational pull toward the centre of the nebula. The second factor began to play a crucial role at large distances from the central attracting mass concentrations: at some point, the accelerated gas particles at the bow shock would no longer return under the influence of gravity. Gas density at this distance from the centre would have been so low that the pressure difference could no longer cause the return movement of gas particles. The peripheral part separated, and the pre-solar nebula was thus divided into a central spherical region and an expanding spherical shell of gas (Fig. 1).

Gas particles at the boundary of the central spherical nebula fell under gravity towards the centre then stopped when the pressure of the lower gas layers exceeded the gravitational pull, and began to move in the opposite direction. As a result of the interaction between gravity and contracting gas back-pressure, the boundary of the spherical nebula began to oscillate radially and a reverse spherical wave propagated from the periphery towards the centre. The sound wave would have appeared to reflect from the gravitational pause – a spherical shell where the gas particles' velocities were not high enough to overcome the gravitational pull from the centre of the nebula and the gas particles that had moved outwards returned due to oscillations; that is, their velocities were lower than the escape velocity:

$$v_e = \sqrt{\frac{2GM}{r}}, \quad (1)$$

---

<sup>1</sup><http://exoplanetarchive.ipac.caltech.edu>



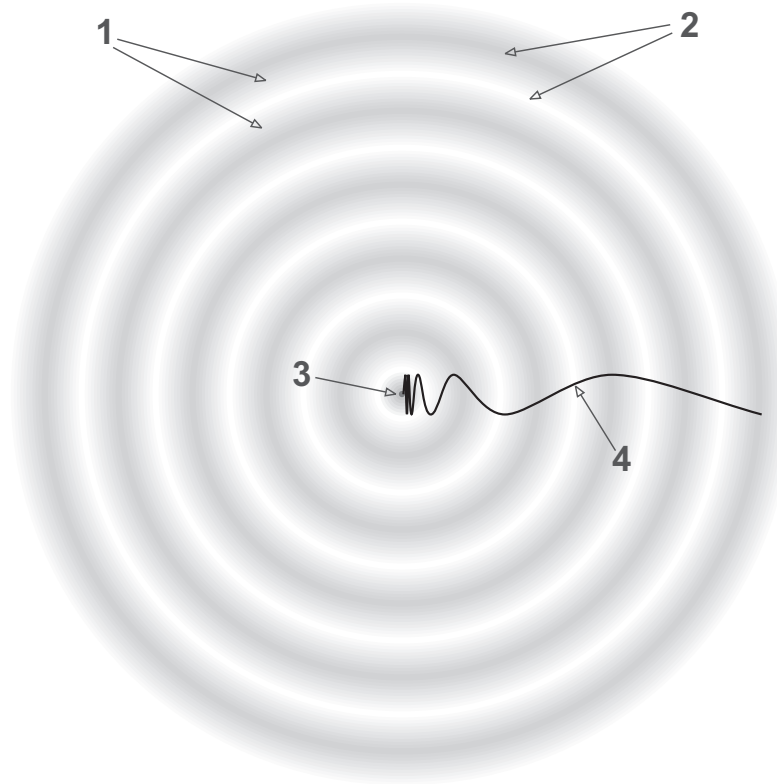
**Figure 1.** Separation of the pre-solar nebula into (1) a central spherical gas nebula and (2) an expanding spherical shell.

where  $G$  is the gravitational constant,  $M$  is the mass of the attraction centre and  $r$  is the distance of the gravitational pause from the centre.

The centre of the pre-solar nebula became quiescent after the first massive explosion: the central part, having been heated due to the emission of large amounts of energy, expanded, since the gravitational field was not yet intense enough to resist the much increased gas pressure, and the thermonuclear fusion of hydrogen combustion diminished. A large mass of gas was ejected into the surrounding space while the compact region of compressed and heated gas – the protosun – remained at the nebula’s core. Several hundred years after this, the wave returning from the boundary of the spherical nebula reached the protosun, concentrated in the centre, and then began to propagate towards the periphery again: a rapid pressure increase resulted in a dramatic rise in temperature at the centre of the protosun, generating a new hydrogen explosion, much weaker than the first one but still strong enough to give extra energy to the wave reflected from the central region. The reflected wave travelled all the way from the centre to the periphery of the spherical nebula, was reflected from the gravitational pause and then returned to the centre again, causing another explosion. This process, repeated several times, eventually established regular oscillations: the wave propagated from the centre to the edge, was reflected from the boundary of the spherical nebula, and returned, causing another explosion that compensated for wave energy loss. Thus, the wave caused explosions while acquiring the energy it needed, establishing a self-sustaining process whose period, defined by the free oscillations of the spherical nebula boundaries, equalled hundreds of years.

The acoustic radiation pressure prevented gravitational contraction of the pre-solar nebula and compensated for deviations from the spherical shape that might result, for example, from the gas turbulence. Waves travelling from the centre and from the periphery interfered with each other to form a giant spherical

acoustic cavity resonator the size of the modern Solar System, including the Kuiper belt and the scattered-disc (Fig. 2). This resonator contained a standing wave with nodes and antinodes, the number of which would have been at least 10 for the pre-solar system: 8 planets + the asteroid belt + the scattered-disc objects.



**Figure 2.** The standing wave in the pre-solar nebula: (1) nodes, (2) antinodes (gas compression and expansion), (3) protosun, (4) real-scale wave. Nodes and antinodes are evenly spaced for illustration purposes; in reality, separations would increase dramatically with increasing distance from the centre.

This article does not include a calculation of exact distances between the antinodes of the standing wave; we may simply state that the wavelength increases with increasing distance from the centre of attraction. Section [3.4] outlines some regularities that allow us to make some observations about the physical reasons underlying planetary positions in the Solar System.

## 2.2 Dust concentration in the antinodes

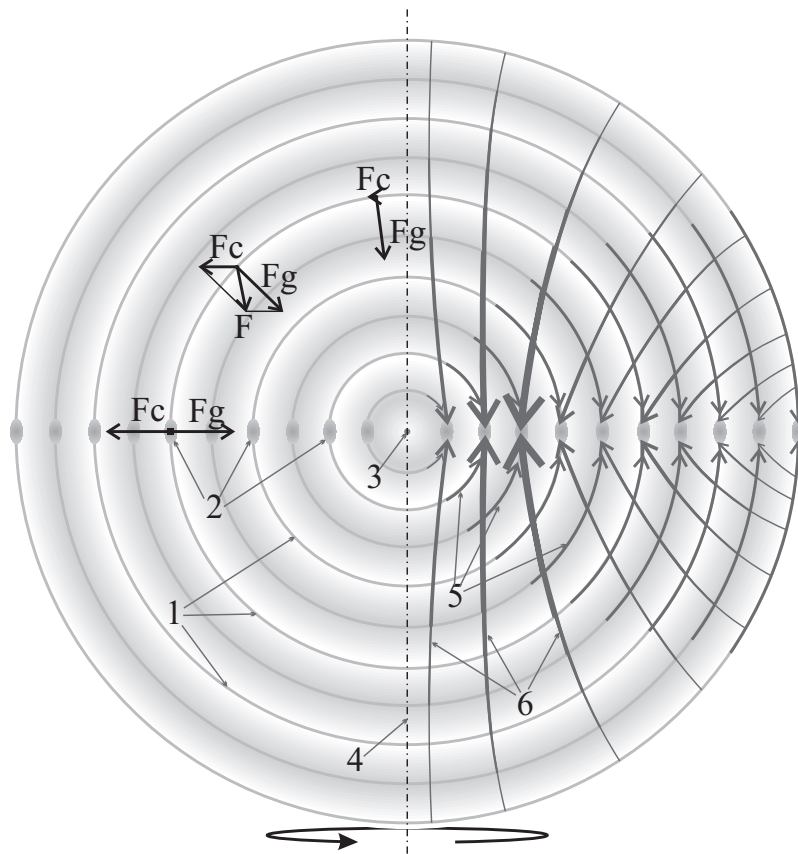
In our model, the pre-solar system can keep ‘sounding’ for many millions of years, as the periodic central explosions significantly retard the gravitational contraction of the protosun and the acoustic radiation pressure stabilizes the gas nebula, preventing its collapse. The dust present in the pre-solar nebula gradually concentrates in the antinodes of the acoustic oscillating system. Apart from gas viscosity, the process of solid particle concentration in the standing wave also relies on attraction from the large gas masses that periodically emerge in the antinodes of the standing wave. This attractive force makes the dust particles move towards the gas clusters in the antinodes and collide with each other, causing redistribution of their velocity vectors in such a way that the dust particles come to rest in the centre of the antinode.

During the gas expansion phase, dust particles in each antinode are gravitationally attracted towards two neighbouring antinodes. The two gravitational sources in these antinodes largely cancel each other

out and, moreover, are remote, so that the dust particles in the gas expansion phase mostly remain in the same place. The next phase of compression attracts new dust particles to the antinode, which also come to rest due to collisions with each other and to the viscosity of the compressed gas.

### 2.3 Migration of solid matter and formation of rings

A certain period of time after the standing wave was established, most of the dust would have been concentrated in the regions of spherical antinodes. Due to increased dust concentration, the number of particle collisions significantly increased, causing their coalescence and increase in size and mass. The gravitational field within the antinodes and the centrifugal force together caused dust to concentrate and form equatorial rings, with radii corresponding to the antinodes of the standing sound wave (Fig. 3).



**Figure 3.** Migration of solid matter in the spherical nebula.  $F_g$  represents the gravitational pull toward the centre and  $F_c$  represents the centrifugal force. (1) spherical dust clusters in the antinodes, (2) dust clusters in the equatorial rings, (3) protosun, (4) nebula rotational axis, (5) direction of dust migration in the antinodes, (6) direction of massive dust cluster migration across the antinodes under the influence of the resultant force  $F$ .

The model predicts that the increase in mass of the solid particles clusters also makes it increasingly difficult for them to stay at the antinodes of the standing sound wave as at the same time that they are affected by attraction from the central gas masses, principally the protosun. The largest clusters of dust fall toward the centre; this results in migration of solid matter from the outer regions of the pre-solar nebula towards the internal zones, while the centrifugal force does not allow the clusters to fall directly onto the protosun. The gravitational attraction of the gas masses in the antinodes directs the matter falling towards the rings forming in the equatorial plane, where the solid matter comes to rest. A significant amount of

solid matter collected in the region of the orbits of Venus and Earth, as it was concentrated here from most of the pre-solar nebula volume.

This dust, gathered in compact rings, is thousands of times more concentrated here than in the primary gas and dust nebula, greatly accelerating the coalescence of particles and leading to the emergence of increasingly massive dust clusters. Agglomerated clusters of dust in narrow spinning rings move in almost identical circular orbits around the protosun and have very small relative velocities. Since their collisions do not result in fragmentation, they form massive planetesimals relatively quickly, which in turn agglomerate to form planets and their satellites. In this model, there are no catastrophic collisions between the nascent planets, their satellites or other massive objects; the planets keep the circular orbits and planes of the equatorial dust rings.

## **2.4 Birth of the Sun**

Gravitational contraction of the protosun, which had been significantly slowed as a result of regular explosions in the centre, still continued, and millions of years after the establishment of the standing sound wave gas temperature at the centre of the protosun became sufficiently high for thermonuclear fusion of hydrogen into helium to continue between explosions, resulting in the birth of a new star – the Sun. The newborn Sun stopped augmenting the sound wave by periodic explosions, and the standing wave diminished. The gas shell previously supported by acoustic pressure began to shrink, forming gas-giant planets around already existing solid nuclei. Jupiter acquired the greatest share of mass, as it was located in the region of highest gas density. All the other gas planets were situated in a lower density environment and thus obtained smaller masses. Jupiter also received large amounts of gas from the inner-planet region, blown outwards by the strong solar wind in the first few millions of years after the birth of the Sun.

## **2.5 The Oort cloud**

The spherical expanding shell that separated from the spherical part of the nebula during the passage of the shock wave from the first explosion (see Fig. 1) moved faster than the escape velocity  $v_e$  and could not return to the centre as the pull of gravity from the central masses was too weak at such distance. With its expansion, this spherical shell accumulated increasing quantities of highly rarefied gas from the primary nebula at its inner edge, while its expansion rate gradually slowed and eventually stopped at a distance of about 1 light year from the centre. This formed a giant spherical region containing dust, ice and frozen gases particles in addition to gaseous hydrogen and helium. Over time the gas component of the shell dissipated in space, while solid particles were concentrated in increasingly large chunks of ice and dust – the cometary bodies – to form the Oort cloud,<sup>19</sup> which has a weak gravitational connection with the central part of the system.

## **2.6 Neptune, the Kuiper belt and scattered-disc objects**

After expansion of the gas shell ceased in the Oort cloud, a weak reverse wave formed within the shell and moved towards the central spherical nebula of gas, where planets had already emerged. Hundreds of thousands or millions of years later the reverse wave from the Oort cloud collided with the outer boundary of the central spherical nebula, causing a redistribution of matter on the edge of the Solar System. Large gas and ice masses from the outer antinodes of the standing sound wave were shifted, and the planet Neptune formed a little closer to the Sun relative to the original position of the 9th antinode, while its mass increased several times by capture of gas and ice from the reverse wave from the Oort cloud. Scattered-disc objects such as the minor planet Eris acquired highly elongated orbits, as there was a long period under the influence of gravitational pull from the gas masses transported by the reverse wave from the Oort cloud. Minor planets in the Kuiper belt also gained significant eccentricity. The orbits of the low-mass objects in

the Kuiper belt and in the scattered disc have been changed so dramatically that they had become to reach Neptune and Uranus, and even began to go into the central region of the solar system and possibly caused the late heavy bombardment of the inner planets, in which was also attended cometary bodies from the Oort cloud, that have had unstable orbits in the first time after the formation.

The periphery processes were very slow, developing over many millions of years, and were relatively weak in their effect on the central region of the pre-solar system. The reverse wave from the Oort cloud only caused the formation of the Kuiper belt, an offset of Neptune's formation and its mass increase. The rest of the Solar System was and is still affected by the region of the Oort cloud only through comets.

## **3 DISCUSSION**

### **3.1 Terrestrial and giant planets**

The difference in chemical composition of the inner and outer planets is explained in our model by the migration of solid matter from the outer spherical shells to the internal ones (see Fig. 3). Before concentrating in stable spinning dust rings, the heavy chemical elements, such as iron and silicate travelled farther towards the centre of the system and were incorporated by the inner planets, with Earth and Venus having more matter, and Mercury and Mars having less. The composition of the closest to the Sun Mercury at the same time has obtained a significant amount of iron. The region between Mars and Jupiter had insufficient solid matter left for a proper planet, so only the minor planets of the asteroid belt were formed. Lighter and more volatile chemical compounds, such as water, methane or ammonia remained in significant quantities in the colder regions beyond the asteroid belt, and became the compositional basis of the giant planets.

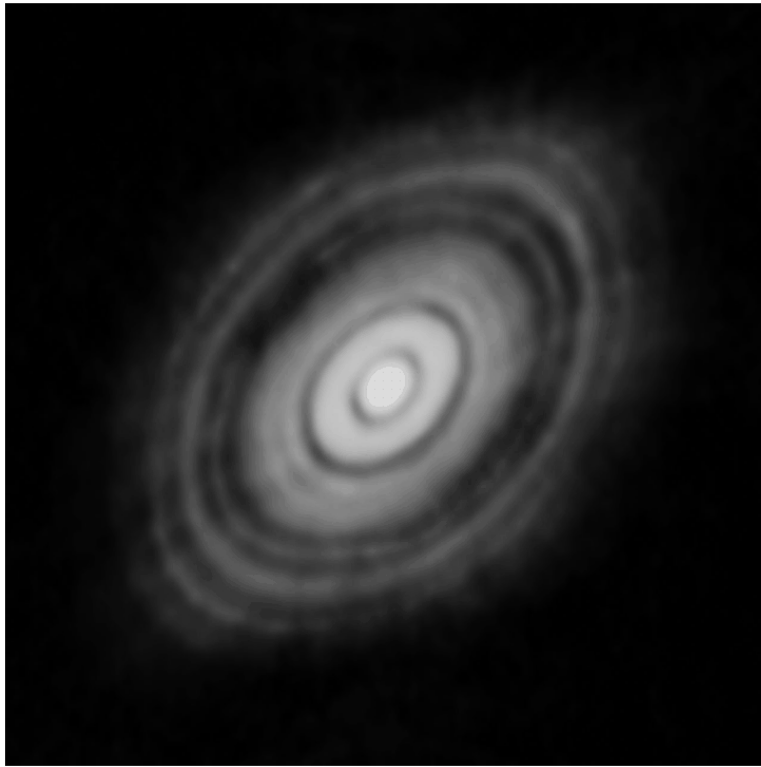
### **3.2 Angular momentum distribution and dust structure**

If we assume that the first powerful explosion in the centre of the protosun was not absolutely symmetrical, slight asymmetry in the explosion led to a redistribution of the angular momentum in the pre-solar nebula, with the less massive peripheral zone of the pre-solar nebula beginning to rotate faster. In addition, an initial asymmetry could produce the observed  $7^\circ$  equatorial plane tilt relative to the Sun's plane of rotation.

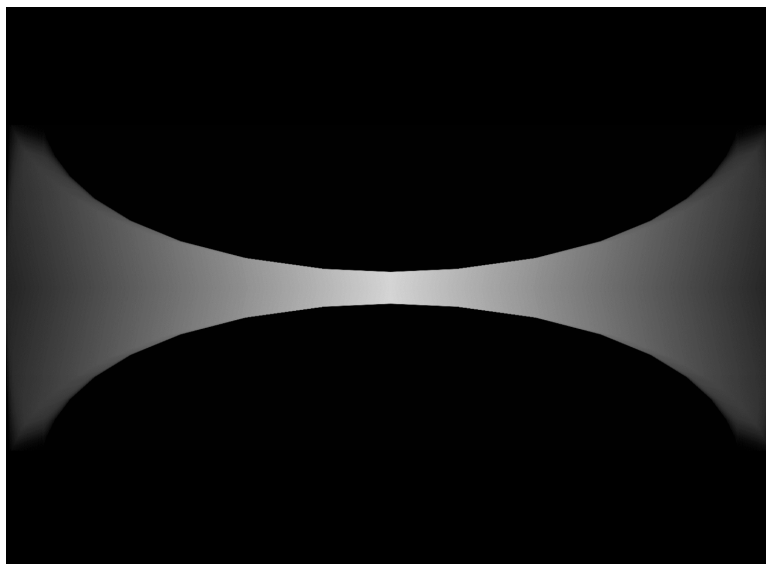
Currently the Sun has more than 99.8% of the entire Solar System mass but only about 0.5% of the total angular momentum. If the rotational kinetic energy were evenly distributed over the original pre-solar nebula, the resulting rotation (taking into account the pirouette effect) would be thousands or millions of times slower than the current rotation of the planets. The angular momentum was initially distributed evenly in the pre-solar nebula, and this means that such weak rotation cannot result in the process of dust disc formation as described by the nebular hypothesis.

However, these discs are visible in images of some young stars (Fig. 4), and in some cases their internal structure can be identified. If a spherical dust cluster such as described in this article were observed from one side, it would be impossible to observe any individual spheres as they would overlap in the line of sight (Fig. 5).

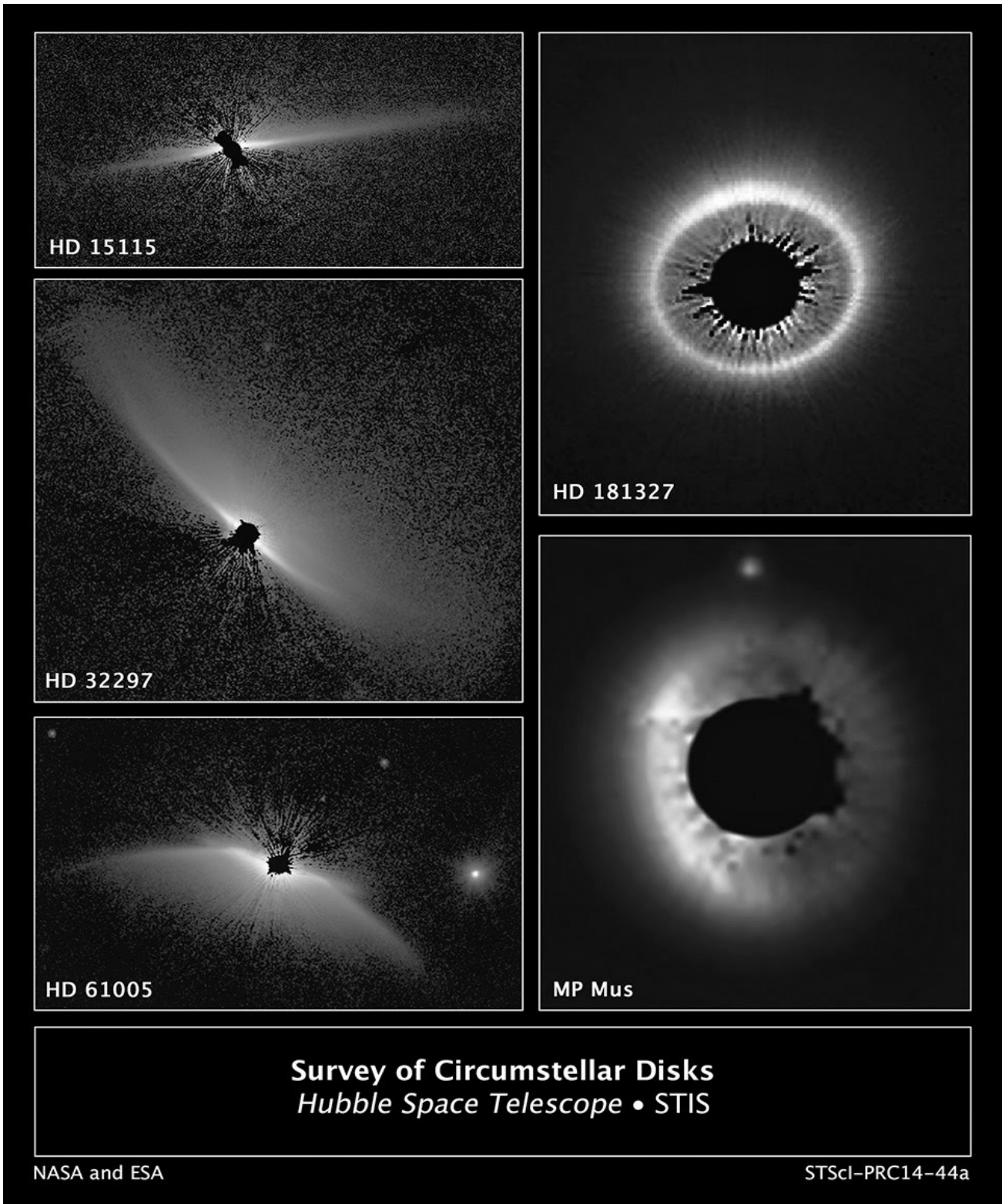
The stage at which a significant amount of dust has already accumulated in the equatorial plane would give such a system the appearance of a disc, despite the fact that there are significant gaps between individual dust clusters. Fig. 6 shows images from the NASA Hubble Space Telescope, showing the complex three-dimensional structure of the dust around young stars that are similar to the structure, which should be observed according to the proposed model; for more images see also: Schneider et al.<sup>20</sup> On these images we see the light reflected from the inner part the near side of the cup-shaped dust structure. In contrast to the images in visible light the image of HL Tauri on the Fig.4 received in submillimeter radiation can show the overlapped spherical dust structures around the less than 100000 years young star.



**Figure 4.** An image of a protoplanetary dust nebula around HL Tauri received by ALMA (The Atacama Large Millimeter/submillimeter Array). Credit: ALMA (ESO/NAOJ/NRAO).



**Figure 5.** The averaged in the line of sight distribution of dust in the spherical antinodes. Closer to centre the dust has already reached the equatorial plane, on the periphery it need to pass a much greater way, so formed a cup-shaped dust distribution structure around the protostar.



**Figure 6.** The images from a NASA Hubble Space Telescope visible-light survey of the architecture of dust systems around young stars. Credit: STScI/Hubble, NASA & ESA.

### 3.3 Exoplanetary systems

Generally speaking, the explosion in a protostellar nebula can either accelerate the gas shell rotation around the future star, slow it down or even give it a spin in the opposite direction. The latter case has been observed in some exoplanetary systems (e.g. <sup>21-27</sup>) and the standard nebular hypothesis cannot explain it, since it implies that the central star and its planets should always rotate and revolve in the same direction, following the rotation of the protostellar nebula. An asymmetry in the initial explosion in the centre of the protostar can also lead to a very strong tilt of the equatorial plane of the planetary system, with tilts of 45° or even 90° not impossible (e.g. <sup>28-31</sup>).

### 3.4 Background for a physical and mathematical model of the Solar System

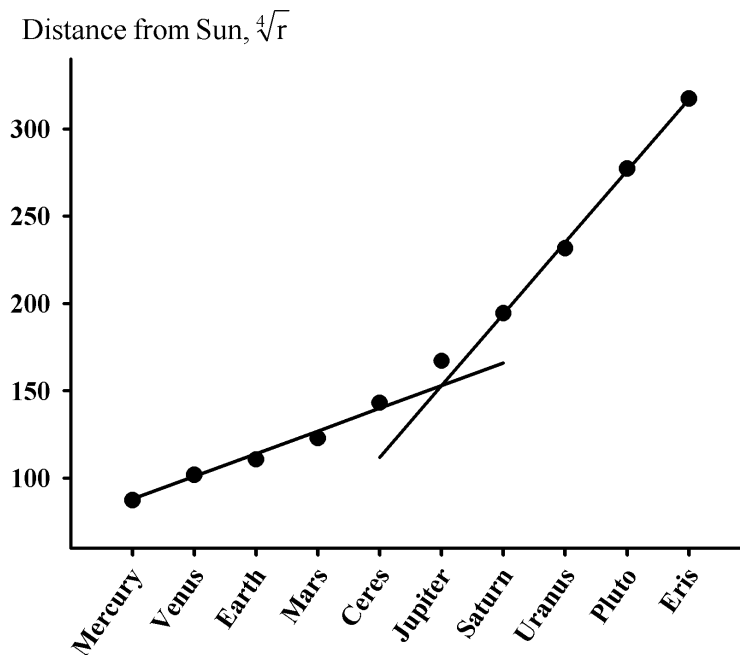
Oscillations occur in an environment where gravitational field intensity and gas pressure change substantially within a wavelength. It can be assumed that the wavelength is inversely proportional to the product of average values of gravitational acceleration  $g$ , which is inversely proportional to the square of the distance to the centre of attraction, and gas pressure  $p$ , which in turn depends directly on  $g$ :

$$\lambda \sim \frac{1}{g \cdot p} \tag{2}$$

or, supposing that  $p \sim g$ :

$$\lambda \sim r^4, \tag{3}$$

where  $\lambda$  is the acoustic wavelength,  $g$  and  $p$  are the average values of gravitational acceleration and gas pressure as function of  $r$ , the distance from the centre.



**Figure 7.** Distribution of planetary distances from the Sun. The vertical axis shows the fourth root of distance in kilometres.

Fig. 7 shows the distribution of planetary distances from the Sun. The planet Neptune is not shown on the figure for the reasons outlined in Section [2.6], its place being taken by Pluto, the main asteroid belt

and the scattered disk are represented by Ceres and Eris. The planets originated in the antinodes, so the figure also shows the distribution of the standing wave in the pre-solar gas nebula. We can see that the points on the graph may be approximated by two straight lines, supporting our hypothesis that locations of the standing wave antinodes depend on  $r^4$ . Closer to the Sun, the constant of proportionality determining the wavelength increases, which may be explained by the fact that the speed of the sound wave increases with rising gas temperature:  $c \sim \sqrt{T}$ ; consequently, with the frequency  $f = \frac{c}{\lambda}$  of the sound wave constant,

$$\lambda(T) \sim \sqrt{T}, \quad (4)$$

where  $c$  is the speed of the sound wave,  $\lambda$  is its wavelength and  $T$  is the temperature. The dependence hypothesis  $\lambda \sim r^4$  provides a background for developing a more complex physical and mathematical model for the Solar System's origin, as well as for planetary systems around other stars.

## 4 CONCLUSIONS

According to the proposed model of planetary origin from the gas and dust nebula in the field of a standing sound wave, only single stars or multiple stars with large distances between individual components can have planetary systems. Systems with closely located multiple star components cannot sustain the reverse wave after the explosion in the centre of one of the stars causes further periodic explosions due to the motion of the stars, so that it will fade out, while a gas-dust nebula that is not stabilized by the field of a standing sound wave will relatively swiftly accrete to the central stars without any planet formation.

Jensen and Akeson<sup>32</sup> describe the case of a binary young stars with components separated by about 386 AU, each of which is surrounded by a cloud of dust, and the plane of rotation of these clouds are strongly tilted relative to each other. The classical theory can not explain this tilt, the proposed model explains this by saying that the explosions in the centre of each of protostars occur independently of each other, and the dust clouds get their individual tilts.

The classical theory suggests that rotation of the protostellar cloud is essential for the formation of planets around the central star. The proposed model does not require such an assumption. If a gas-dust nebula does not rotate, after the first asymmetric explosion the central protostar and the peripheral gas masses will gain equal angular momentum, but opposite in sign. The gas-dust nebula will start spinning and at the same time a standing sound wave will emerge, beginning the process of planet formation. The resulting planetary system will have the central star and planets rotating in opposite directions.

## Acknowledgements

This research has made use of the NASA Exoplanet Archive, which is operated by the California Institute of Technology, under contract with the National Aeronautics and Space Administration under the Exoplanet Exploration Program.

## References

1. Kant, I. Allgemeine Naturgeschichte des Himmels. *Johann Friderich Petersen, Königsberg und Leipzig* (1755). (English translation: W. Hastie, 1968, in Kant's Cosmology, Universal Natural History and Theories of the Heavens. Greenwood Publishing, New York).
2. de Laplace, P. S. M. Expositions du système du monde (Paris, Imprimerie du Cercle Social) (1796).
3. Chamberlin, T. C. On a Possible Function of Disruptive Approach in the Formation of Meteorites, Comets, and Nebulae. *Astrophys.J.* **14**, 17-40 (1901).

4. Moulton, F. R. On the Evolution of the Solar System. *Astrophys. J.* **22**, 165 (1905).
5. Schmidt, O. Y. Meteoritic theory of the origin of the Earth and planets. *Dokl. Akad. Nauk SSSR* **45** (6), 245-249 (1944).
6. von Weizsäcker, C. F. Über die Entstehung des Planetensystems. *Z. Astrophys.* **22**, 319 (1944). Translation, "On the origin of the planetary system" Report No. RSIC-138 [=AD-4432290] Huntsville AL: Redstone Scientific Information Center.
7. McCrea, W. H. The origin of the solar system. *Proc. Roy. Soc. London, Ser. A* **256**, 245-266 (1960).
8. Woolfson, M. M. A capture theory of the origin of the solar system. *Proc. Roy. Soc. London, Ser. A* **282**, 485-507 (1964).
9. Safronov, V. S. Evolution of the Protoplanetary Cloud and Formation of the Earth and Planets. *Evolution of the protoplanetary cloud and formation of the earth and planets.*, by Safronov, VS. Translated from Russian. Jerusalem (Israel): Israel Program for Scientific Translations, Keter Publishing House, 212 p. (1972).
10. Bally, J., Devine, D., Fesen, R. A., & Lane, A. P. Twin Herbig-Haro jets and molecular outflows in L1228. *The Astrophysical Journal* **454**, 345-360 (1995).
11. Bally, J., Reipurth, B. & Davis C.J. Observations of Jets and Outflows from Young Stars. *In Protostars and Planets V*, B. Reipurth, D. Jewitt, and K. Keil (eds.), University of Arizona Press, Tucson, 215-230 (2007).
12. Eisloffel, J. Parsec-scale molecular H<sub>2</sub> outflows from young stars. *A&A* **354**, 236-246 (2000).
13. Frank, A., et al. Jets and outflows from star to cloud: Observations confront theory. *In Protostars and Planets VI*, 451-474, (2014).
14. Busquet, G., et al. The CHESS survey of the L1157-B1 bow-shock: high and low excitation water vapor. *A&A* **561**, A120 (2014).
15. Nisini, B., et al. Mapping water in protostellar outflows with Herschel-PACS and HIFI observations of L1448-C. *A&A* **549**, A16 (2013).
16. Santangelo, G., et al. Herschel-PACS observations of shocked gas associated with the jets of L1448 and L1157. *A&A* **557**, A22 (2013).
17. Safron, E. J., et al. HOPS 383: An Outbursting Class 0 Protostar in Orion. *ApJ* **800**, L5 (2015).
18. Stanke, T. Observations of molecular jets in Orion A. *Astrophysics and Space Science* **287**, 149-160 (2003).
19. Oort, J.H. The Structure of the Cloud of Comets Surrounding the Solar System and a Hypothesis Concerning its Origin. *Bull. Astron. Inst. Neth.* **11**, 91-110 (1950).
20. Schneider, G., et al. Probing for Exoplanets Hiding in Dusty Debris Disks: Disk Imaging, Characterization, and Exploration with HST/STIS Multi-Roll Coronagraphy. *The Astronomical Journal* **148**, 59 (2014).
21. Narita, N., et al. First evidence of a retrograde orbit of a transiting exoplanet HAT-P-7b. *PASJ* **61**, L35-L40 (2009).
22. Winn, J. N., et al. HAT-P-7: a retrograde or polar orbit, and a third body. *ApJ* **703**, L99-L103, (2009).
23. Winn, J. N., et al. ORBITAL ORIENTATIONS OF EXOPLANETS: HAT-P-4b IS PROGRADE AND HAT-P-14b IS RETROGRADE. *The Astronomical Journal* **141**, 63 (2011).

24. Triaud, A., et al. Spin-orbit angle measurements for six southern transiting planets-New insights into the dynamical origins of hot Jupiters. *A&A* **524**, A25 (2010).
25. Queloz, D., et al. WASP-8b: a retrograde transiting planet in a multiple system. *A&A* **517**, L1 (2010).
26. Bayliss, D., et al. Confirmation of a retrograde orbit for exoplanet WASP-17b. *ApJ* **722**, L224 (2010).
27. Hébrard, G., et al. The retrograde orbit of the HAT-P-6b exoplanet. *A&A* **527**, L11 (2011).
28. Pont, F., et al. The spin-orbit angle of the transiting hot Jupiter CoRoT-1b. *MNRAS* **402**, L1-L5 (2010).
29. Simpson, E. K., et al. The spin-orbit angles of the transiting exoplanets WASP-1b, WASP-24b, WASP-38b and HAT-P-8b from Rossiter–McLaughlin observations. *MNRAS* **414** 3023-3035 (2011).
30. Winn, J. N., et al. The oblique orbit of the super-Neptune HAT-P-11b. *ApJ* **723**, L223 (2010).
31. Hirano, T., et al. A Possible Tilted Orbit of the Super-Neptune HAT-P-11b. *PASJ* **63**, 531-536 (2011).
32. Jensen, E. L., & Akeson, R. Misaligned protoplanetary disks in a young binary star system. *Nature* **511**, 567-569 (2014).