



HAL
open science

Ring the BELL and tie the KNOX: roles forTALEs in gynoeciurn development

Nicolas Arnaud, Veronique Pautot

► **To cite this version:**

Nicolas Arnaud, Veronique Pautot. Ring the BELL and tie the KNOX: roles forTALEs in gynoeciurn development. *Frontiers in Plant Science*, 2014, 5, 10.3389/fpls.2014.00093 . hal-01204042

HAL Id: hal-01204042

<https://hal.science/hal-01204042>

Submitted on 28 May 2020

HAL is a multi-disciplinary open access archive for the deposit and dissemination of scientific research documents, whether they are published or not. The documents may come from teaching and research institutions in France or abroad, or from public or private research centers.

L'archive ouverte pluridisciplinaire **HAL**, est destinée au dépôt et à la diffusion de documents scientifiques de niveau recherche, publiés ou non, émanant des établissements d'enseignement et de recherche français ou étrangers, des laboratoires publics ou privés.



Ring the BELL and tie the KNOX: roles for TALEs in gynoecium development

Nicolas Arnaud and Véronique Pautot*

UMR 1318 INRA-AgroParisTech, INRA Centre de Versailles-Grignon, Institut Jean-Pierre Bourgin, Versailles, France

Edited by:

Robert G. Franks, North Carolina State University, USA

Reviewed by:

Robert G. Franks, North Carolina State University, USA

Cristel C. Carles, Université Joseph Fourier of Grenoble, France

Juan José Ripoll, University of California at San Diego, USA

*Correspondence:

Véronique Pautot, UMR 1318 INRA-AgroParisTech, INRA Centre de Versailles-Grignon, Institut Jean-Pierre Bourgin, Route de St Cyr (RD10), Versailles 78026, France
e-mail: veronique.pautot@versailles.inra.fr

Carpels are leaf-like structures that bear ovules, and thus play a crucial role in the plant life cycle. In angiosperms, carpels are the last organs produced by the floral meristem and they differentiate a specialized meristematic tissue from which ovules develop. Members of the three-amino-acid-loop-extension (TALE) class of homeoproteins constitute major regulators of meristematic activity. This family contains KNOTTED-like (KNOX) and BEL1-like (BLH or BELL) homeodomain proteins, which function as heterodimers. KNOX proteins can have different BELL partners, leading to multiple combinations with distinct activities, and thus regulate many aspects of plant morphogenesis, including gynoecium development. TALE proteins act primarily through direct regulation of hormonal pathways and key transcriptional regulators. This review focuses on the contribution of TALE proteins to gynoecium development and connects TALE transcription factors to carpel gene regulatory networks.

Keywords: carpel, TALE, transcription factors, development, *Arabidopsis*

INTRODUCTION

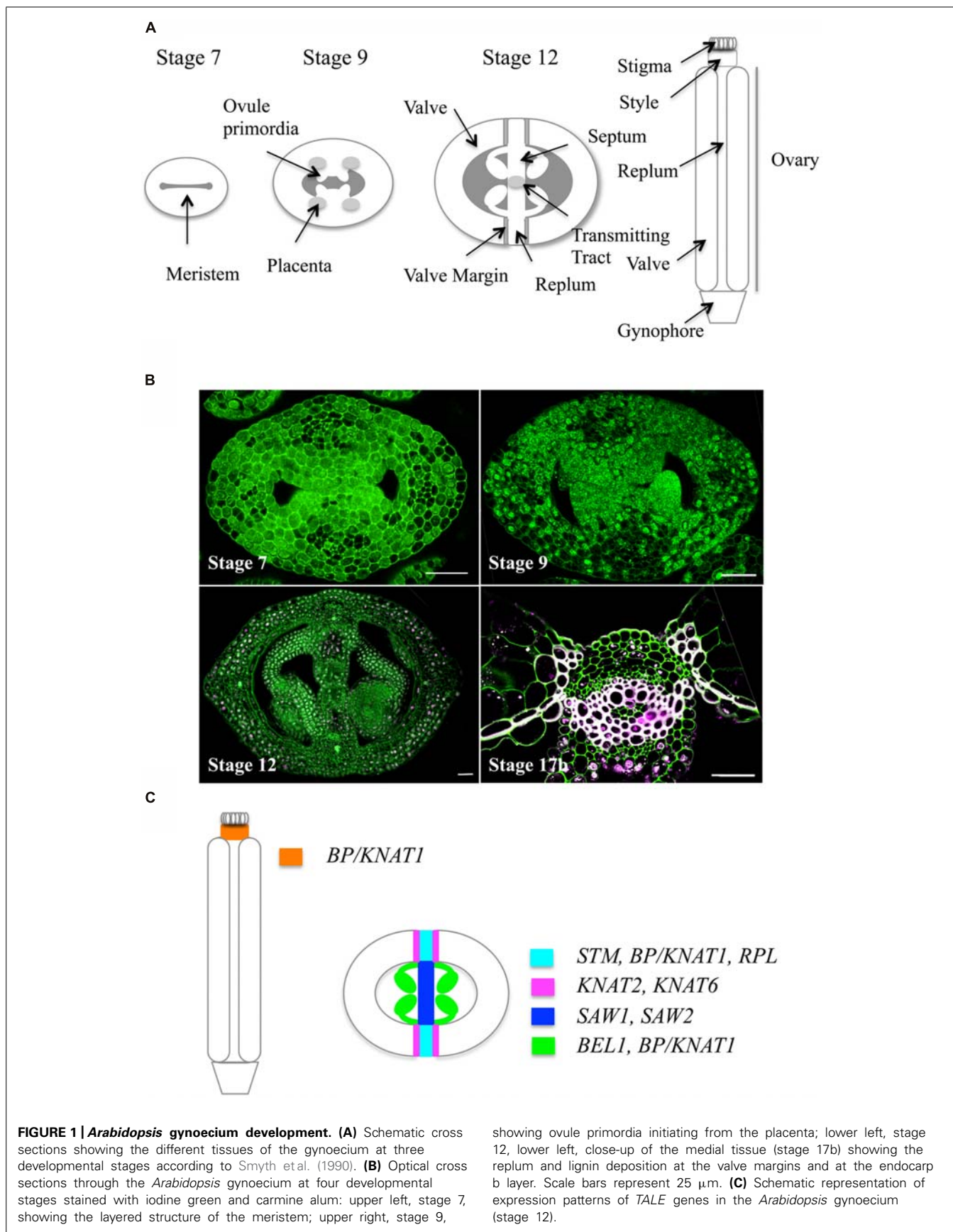
In *Arabidopsis*, the female reproductive organ, or gynoecium, consists of an apical stigma, a style, and a basal ovary (Figure 1 and for reviews, Ferrándiz et al., 1999; Roeder and Yanofsky, 2006; Girin et al., 2009; Ferrándiz et al., 2010). The ovary is composed of two fused carpels (termed valves after fertilization) whose margins are joined by the replum. The inner (adaxial) side of the replum has a typical meristematic layered structure. This meristem gives rise to ovules and to two septum primordia, which grow and fuse to create the septum that divides the ovary into two locules. Two rows of ovules arise along the septum inside each locule. The septum differentiates a central transmitting tract tissue, which guides pollen tubes from the style to the ovule. Upon fertilization, ovules develop into seeds, and gynoecium structure changes dramatically: the fruit enlarges both longitudinally and laterally to accommodate seed growth and the valve margins undergo cell wall changes required for silique dehiscence and seed dispersal.

In multicellular organisms, development relies on stem cells, which are defined by their ability to renew themselves and to give rise to daughter cells that contribute to organ production. In plants, stem cells are maintained within structures called meristems, and new organs are produced at the meristem periphery (for review, Sablowski, 2011). The shoot apical meristem (SAM) produces leaves and axillary meristems. Following floral evocation, the SAM becomes an inflorescence meristem (IM), which produces flower meristems (FMs) that give rise to flowers containing gynoecia. Carpels are thought to be modified leaves with their margins representing a lateral organ boundary (Frohlich, 2003). As such, similar interactions occurring between SAM-boundary-leaf apply to fruit patterning.

Within meristems, cell proliferation and differentiation are tightly controlled by networks of transcription factors (TFs),

which integrate developmental cues such as position, differentiation, and growth (Sablowski, 2011). The *KNOTTED1* (*KN1*) gene in maize was the first regulator of meristem activity identified in plants (Hake and Vollbrecht, 1989). In *Arabidopsis*, *SHOOT MERISTEMLESS* (*STM*), which is functionally related to *KN1*, and *WUSCHEL* (*WUS*) control meristem activity (for review, Aichinger et al., 2012). *WUS* is required to maintain the stem-cell population, as *wus* mutants lack stem cells at the center of the shoot apices while *STM* is required for SAM initiation and its maintenance in an undifferentiated state, as strong *stm* mutants fail to develop a meristem during embryogenesis and fail to produce lateral organs (Endrizzi et al., 1996; Long et al., 1996). *STM* is expressed in SAM, IM, FM, and in the inner side of the replum (Endrizzi et al., 1996; Long et al., 1996; Ragni et al., 2008). *STM* is down-regulated when cells become specified as primordium founder cells (Long et al., 1996).

STM belongs to the “Three-Amino-acid-Loop-Extension” (TALE) homeodomain superclass of TFs, which in *Arabidopsis* comprises 9 KNOTTED-like (KNAT or KNOX) and 13 BEL1-like (BLH or BELL) members (Box 1). The TALE factors function as KNOX-BELL heterodimers (for reviews, Hay and Tsiantis, 2010; Hamant and Pautot, 2010; Di Giacomo et al., 2013). *STM* maintains the pool of indeterminate meristematic cells through repression of gibberellin (GA) biosynthesis, activation of GA catabolism, and activation of cytokinin (CK) biosynthesis (Sakamoto et al., 2001; Chen et al., 2004; Jasinski et al., 2005; Bolduc and Hake, 2009). In addition, in the SAM, *STM* represses the *ASYMMETRIC LEAVES1* (*AS1*) gene, which encodes a MYB TF involved in leaf patterning. *AS1* represses other TALE-family members such as *KNAT1/BREVIPEDICELLUS* (*BP*), *KNAT2*, and *KNAT6* in leaves (Byrne et al., 2000; Phelps-Durr et al., 2005). Subsequent organ initiation requires high auxin and GA levels



BOX 1 | Meet the TALE gene family.

The TALE family is a superclass of homeodomain TFs which comprises eight KNOTTED-like proteins in *Arabidopsis thaliana* (KNAT or KNOX) plus a mini KNAT lacking the homeodomain (KNATM) and 13 BEL1-like (BLH or BELL) members (for a detailed review of the structure of this gene family, see Mukherjee et al. (2009) and for a phylogenetic tree of the *Arabidopsis* TALE family, see Hamant and Pautot, 2010). This family controls development in all eukaryotic lineages (Hay and Tsiantis, 2010). KNOX and BELL families occur in single copy in Green algae and have diversified in land plant (Lee et al., 2008). The KNOX family is divided into three classes based on sequence similarity and gene expression pattern (Hake et al., 2004; Magnani and Hake, 2008): Class I includes STM, BP/KNAT1, KNAT2 and KNAT6; Class II includes KNAT3, 4, 5, and 7. Class III contains KNATM, which can interact with other TALE members to modulate their activity (Kimura et al., 2008; Magnani and Hake, 2008). The BELL family comprises RPL/BLH9, PNF/BLH8, ATH1, SAW1/BLH2, SAW2/BLH8, BEL1 – whose functions have been characterized- and BLH1, BLH3, BLH5, BLH6, BLH7, BLH10, and BLH11 – whose functions are not yet known (Hamant and Pautot, 2010). The interaction of KNOX and BELL proteins is critical for their nuclear localization and their binding affinity to DNA, thereby imparting their activity (Smith et al., 2002; Rutjens et al., 2009; Kim et al., 2013). TALEs can also form complexes with other TFs, such as MADS-Box family members, to control ovule development (Brambilla et al., 2007) and with OVATE proteins, which negatively regulate KNOX-BELL heterodimers by relocating them from the nucleus to the cytoplasm (Hackbusch et al., 2005). STM protein traffics selectively through plasmodesmata, and this cell-to-cell movement, which involves chaperonins belonging to a group of cytosolic chaperones, is critical to maintain of the SAM (Xu et al., 2011).

and down regulation of *STM* and related TFs (Hay and Tsiantis, 2010).

Multiple combinations of TALE heterodimers with distinct activities are produced throughout the plant life cycle, controlling diverse developmental processes, such as SAM and boundary maintenance, leaf development and flowering. This review discusses the contribution of TALE TFs to gynoecium development in *Arabidopsis*, and links these proteins to the other key molecular players of carpel development.

CARPEL INITIATION: KNOX AND BELL INTERACTIONS WITH AGAMOUS

Carpels are the last organs to be produced by floral meristems. Weak *STM* alleles or weak *STM* RNAi lines show no carpel formation due to premature differentiation of meristematic cells (Endrizzi et al., 1996; Scofield et al., 2007). Consistent with this, CLAVATA (*CLV*) receptors control the proliferation and number of organs in developing gynoecia through *STM* activity. Mutations in *CLV1*, *CLV2*, and *CORYNE* (*CRN*) receptors lead to increased meristem size correlated with an enlarged *STM* expression pattern (Durbak and Tax, 2011). Unlike the SAM, which is indeterminate, the FM terminates after carpel initiation. This determinacy depends on a negative feedback loop involving the C-function homeotic MADS domain TF, AGAMOUS (*AG*) which acts in part via activation of the zinc finger protein KNUCKLES (*KNU*) to repress *WUS* expression (Lenhard et al., 2001; Lohmann et al., 2001; Sun et al., 2009). *AG* controls carpel identity in combination with another MADS BOX TF, SEPALLATA3 (*SEP3*) (Bowman

et al., 1989; Honma and Goto, 2001; Pelaz et al., 2001). *AG* expression is first detectable in developing flowers at early stage 3, flower stages defined by Smyth et al. (1990), where it is initially localized in the center of the FM, and is later restricted to stamen and carpel primordia (Bowman et al., 1991; Drews et al., 1991). At late stage 5, the floral meristem forms a flattened oval where the gynoecium initiates (Smyth et al., 1990). This stage coincides presumably with the generation of auxin maxima similar to those observed at the initiation of other organs, although no expression of auxin-signaling reporters at stages 5–7 has been described (for review, Larsson et al., 2013). The BELL member, REPLUMLESS (*RPL*), also known as PENNYWISE (*PNY*), BELLRINGER (*BLR*), VAAMANA (*VAN*), or LARSON (*LSN*) and its close relative POUNDFOOLISH (*PNF*) together with *STM*, function in parallel with *LEAFY* (*LFY*) and *WUS* to promote carpel formation through positive regulation of *AG* (Byrne et al., 2003; Roeder et al., 2003; Smith and Hake, 2003; Bao et al., 2004; Bhatt et al., 2004; Yu et al., 2009). Interestingly, a previous report showed that *RPL* represses *AG* together with *LEUNIG* and *SEUSS*, two transcriptional co-regulators of *AG* (Bao et al., 2004). This study was based on analysis of two recessive *rpl* alleles (*blr-4* and *blr-5*) whose flowers exhibit homeotic conversion of sepals to carpels at high temperature during late-stage flower development. This suggests that *RPL* could have two antagonistic activities depending presumably on its partner. However, no ectopic *AG* expression has been reported so far in null *rpl* mutants. An alternative hypothesis is that the point mutations within the homeobox region in *blr-4* and *blr-5* mutants cause the production of abnormal protein with regulatory defects.

GYNOECIUM PATTERNING

Once initiated, the gynoecium developmental program promotes correct patterning of the future fruit. Several specific tissues are formed (see above and **Figure 1**), some of which require the activity of TALE TFs. At stage 6, the gynoecium forms as a ridge of raised cells around a central cleft and starts to acquire its medio-lateral symmetry, comprising replum, valve margins and valves. In the transverse plane, the adaxial inner side of the replum has a typical meristematic layered structure (**Figure 1B**), and accordingly expresses the meristematic genes *STM*, *CLV1/2*, and *CRN* (Long et al., 1996; Durbak and Tax, 2011; Romera-Branchat et al., 2012). However, *WUS* is not expressed in the replum (Groß-Hardt et al., 2002). Recently, a role for *WUS-LIKE HOMEBOX13* (*WOX13*) in replum was reported (Romera-Branchat et al., 2012). Unlike *WUS*, which marks a few cells in the SAM, defining its organizing center, *WOX13* has a broad expression pattern in replum, suggesting that the medial region of the gynoecium does not show typical SAM organization.

Consistent with a role for *STM* in initiating and maintaining meristems, weak alleles of *STM* or weak *STM* RNAi lines produce fewer ovules than the wild type (Endrizzi et al., 1996; Scofield et al., 2007). Two other TALE genes, *RPL* and *BP*, are also expressed in the replum. The *rpl* mutant shows defects in replum differentiation and in septum fusion (Roeder et al., 2003). *RPL* promotes replum identity through restriction of expression of the MADS-BOX genes *SHATTERPROOF1/2* (*SHP1/2*) and the basic helix-loop-helix (*bHLH*) gene *INDEHISCENT* (*IND*), to the

valve margins (Roeder et al., 2003; Liljegren et al., 2004; Dinneny et al., 2005), but RPL is not required *per se* for replum specification, since double or triple mutant combinations including *rpl* alleles develop a normal replum. In addition, RPL represses several valves-associated genes in the replum: *JAGGED* (*JAG*), and genes conferring abaxial fate *FILAMENTOUS FLOWER* (*FIL*) and *YABBY3* (*YAB3*), which promote *FRUITFULL* (*FUL*), *SHPI1/2* and *IND* expression in the presumptive valve and valve margin tissues, respectively (Dinneny et al., 2005). BP, which interacts with RPL and activates its expression, contributes redundantly with RPL to replum development (Alonso-Cantabrana et al., 2007). Similarly to their role at the leaf/SAM interface, AS1 and the lateral organ boundary (LOB)-domain protein asymmetric leaves2 (AS2) restrict the expression of BP to the replum, exemplifying the co-option of this regulatory module in the SAM and carpel (Alonso-Cantabrana et al., 2007; González-Reig et al., 2012; Luo et al., 2012; Lodha et al., 2013). Together these studies led to proposition of a model in which antagonism between the lateral factors (*JAG/FIL* and *AS1/2*) and the medial factors (BP and RPL) determines the medio-lateral fruit pattern by regulating the formation and size of three domains: valve, valve margin and replum. Furthermore, APETALA2, a member of the AP2/Ethylene-responsive element binding protein (EREBP) TF family, limits growth of both replum and valve margins by repressing BP and RPL in the replum and *SHPI1/2* and *IND* in valve margins (Ripoll et al., 2011). Although BP, together with RPL, contributes to replum development, single *bp* loss-of-function mutants have wild-type repla (Alonso-Cantabrana et al., 2007; Ripoll et al., 2011). BP is also expressed in the style where it is required for radial growth (Venglat et al., 2002).

From the maternal side, optimal seed production relies on adequate generation of ovules. Ovule primordia formation depends on auxin maxima (Bencivenga et al., 2012). Auxin levels are modulated by the combined activity of CUP-SHAPED COTYLEDON1 (CUC1) and CUC2 TFs, which are redundantly required to regulate the polar auxin transporter *pin-formed1* (*PIN1*) expression (Galbiati et al., 2013). CK also regulates *PIN1* expression during early stages of ovule development (Bencivenga et al., 2012). The interplay between hormones and TFs forms an integrative framework enabling ovule primordia initiation. Once initiated, an ovule differentiates a central nucellus containing the embryo sac, two integuments that envelop the nucellus, and a funiculus that connects the ovule to the placenta (for reviews, Colombo et al., 2008; Shi and Yang, 2011). Correct ovule development requires the activity of the *BEL1* gene, the founding member of the BELL family. *BEL1* is expressed in ovule integument primordia, and controls ovule integument identity (Robinson-Beers et al., 1992; Reiser et al., 1995). The *bell* mutant exhibits bell-shaped ovules – hence its name – caused by the abnormal development of integuments (Reiser et al., 1995). Occasionally, the *bell* mutant shows homeotic conversion of ovules into carpeloid structures due to prolonged AG expression during ovule development (Modrusan et al., 1994; Ray et al., 1994; Brambilla et al., 2007). *BEL1* is required for auxin and CK signaling pathways during ovule development; the level and localization of *PIN1* expression are controlled by CK in part via *BEL1* activity (Bencivenga et al., 2012).

Inside the future fruit, tissues required for successful fertilization and fruit compartmentalization are formed concomitantly. Two placenta ridges develop in the medial plane to give rise to a specialized structure compartmentalizing the fruit, the septum, which divides the fruit into two halves. In its center, the transmitting tract differentiates in the apical-basal axis to guide pollen tube growth. To date, little is known about the role of TALE genes in septum development. SAWTOOTH1 (*SAW1*)/BLH2 and *SAW2/BLH4*, members of the BELL family, are expressed in the transmitting tract, and interact with STM and BP, but their exact role in medial tissue development remains to be determined (Kumar et al., 2007).

POST-FERTILIZATION EVENTS

Upon fertilization, the gynoecium will develop into a fruit that contains the seeds. Gynoecium enlargement to accommodate the developing seeds relies on the coordinated growth of the entire organ, which strongly depends on hormonal balances (for review, Reyes-olalde et al., 2013). For instance, GA-deficient mutants show reduced fruit size, indicating that fruit development involves extensive GA-activated cell elongation (Koorneef and van der Veen, 1980; Chiang et al., 1995). While the fruit enlarges, differentiation processes take place to ensure efficient release of the seeds (Reyes-olalde et al., 2013). At the cellular level, this includes the differentiation of the dehiscence zone at the valve margins. This process depends on the activity of IND, which is responsible of the formation of a local auxin minimum at the valve margins through the regulation of *PINOID* and *WAG2* kinases (Sorefan et al., 2009). The dehiscence zone consists of two cell layers: the lignified and the separation layers. The lignified layer, located at the boundary with the valve, is continuous with the lignified internal layer (endocarp b) and contributes to tension that builds up in the silique until dehiscence. The layer located on the replum side, which constitutes the separation layer, is composed of isodiametric cells that undergo middle lamella breakdown. This separation process involves the activity of specialized cell wall enzymes such as polygalacturonases (PGs) and pectin methylesterases (PMEs) that increase the ability of PGs to break down pectin (Ogawa et al., 2009 and for review, Wolf et al., 2009). A link between TALE proteins and cell wall modifications has been shown in studies of internode patterning in *rpl* and *bp* mutants (Mele et al., 2003; Smith and Hake, 2003; Peaucelle et al., 2011). BP prevents premature deposition of lignin during internode growth by direct repression of genes involved in lignin biosynthesis, and regulates other cell-wall-specific genes such as ones encoding PMEs or cellulose synthetase (Mele et al., 2003; Wang et al., 2006). RPL is involved in maintaining normal phyllotaxy via the regulation of PMEs, which are involved in the cell wall loosening necessary to allow growth (Peaucelle et al., 2011). Interestingly, *KNAT6* and *KNAT2*, which act antagonistically to BP and RPL in stems, are expressed in valve margins (Ragni et al., 2008). This is consistent with *KNAT6* expression in SAM and its role in maintaining boundaries between SAM and lateral organs (Belles-Boix et al., 2006). Inactivation of *KNAT6* rescues replum formation in *rpl* mutants, showing that the antagonistic interaction between *KNAT6* and RPL also controls fruit architecture. Consistent with their expression in valve margins, *KNAT6*, and *KNAT2* positively regulate lignin deposition

(Khan et al., 2012a,b). These factors also act antagonistically to BP during floral organ abscission, a process that also requires cell wall remodeling. BP regulates the timing of floral abscission by controlling abscission zone cell size. Upon activation of a signaling pathway including inflorescence deficient in abscission (IDA) and two receptor-like kinases, HAESA and HAESA-LIKE2 (HAE-HSL2), BP is inactivated, leading to an increase of *KNAT2* and *KNAT6* expression, which act as positive regulators of floral organ separation (Shi et al., 2011). The link between TALEs and cell wall remodeling enzymes was further confirmed with the identification of STM, KN1, and RPL targets, which include several genes involved in cell wall modifications (Spinelli et al., 2011; Bolduc et al., 2012; Etchells et al., 2012).

FUTURE DIRECTIONS

Gynoecium development is critical for Angiosperm reproductive success, and is therefore tightly controlled by interconnected networks of TFs. Here, we reviewed the role of TALE TFs in the control of carpel development, and present the state of knowledge of the molecular interactions within this gene regulatory network. To date, the studies concerning the contribution of TALE TFs to carpel development focused on a few members of this family. Despite the number of studies, several pieces of the puzzle that will be needed to decipher the entire carpel regulatory network are still missing. In particular, the role of the *KNAT* class II members in carpels has not been investigated. Although several TALE members are expressed in carpels, the detailed expression pattern remains to be characterized for most of them. A precise map of TALE expression and co-localization of *KNOX* and *BELL* in the gynoecium will provide clues about putative partners and redundancies. Despite evidence linking TALE TFs, CK and GA pathways, the exact role of this regulatory node and its precise contribution to carpel development are not yet well established. Recently, the direct targets of KN1 in maize inflorescences were identified, and these data confirm that TALE TFs function as major orchestrators of hormone synthesis or response (Bolduc et al., 2012). Importantly, a clear link between KN1 and the auxin pathway was demonstrated. Furthermore, key developmental regulators such as homeodomain TFs are highly represented among KN1 targets, suggesting that KN1 orchestrates upper levels of regulatory networks controlling development. New strategies based on next generation sequencing to identify targets of TFs have begun to shed light on the molecular interactions downstream of key TFs, providing crucial insight into the mechanisms controlling development and opening new perspectives regarding carpel development. The integration of these data into comprehensive models accounting for spatial and temporal information represents a challenge to fully understand how fruits develop. Developing mathematical models will be particularly useful for understanding how fruit morphology can vary and how their astonishing diversity of shape can be achieved among plant species.

ACKNOWLEDGMENTS

We acknowledge Olivier Grandjean for technical assistance, Mark Tepfer, Thomas Girin, Patrick Laufs, and Shelley Hepworth for critical comments.

REFERENCES

- Aichinger, E., Kornet, N., Friedrich, T., and Laux, T. (2012). Plant stem cell niches. *Annu. Rev. Plant Biol.* 63, 615–636. doi: 10.1146/annurev-arplant-042811-105555
- Alonso-Cantabrana, H., Ripoll, J. J., Ochando, I., Vera, A., Ferrándiz, C., and Martínez-Laborda, A. (2007). Common regulatory networks in leaf and fruit patterning revealed by mutations in the *Arabidopsis* ASYMMETRIC LEAVES1 gene. *Development* 134, 2663–2671. doi: 10.1242/dev.02864
- Bao, X., Franks, R. G., Levin, J. Z., and Liu, Z. (2004). Repression of AGAMOUS by BELLRINGER in floral and inflorescence meristems. *Plant Cell* 16, 1478–1489. doi: 10.1105/tpc.021147
- Belles-Boix, E., Hamant, O., Witiak, S. M., Morin, H., Traas, J., and Pautot, V. (2006). *KNAT6*: an *Arabidopsis* homeobox gene involved in meristem activity and organ separation. *Plant Cell* 18, 1900–1907. doi: 10.1105/tpc.106.041988
- Bencivenga, S., Simonini, S., Benková, E., and Colombo, L. (2012). The transcription factors BEL1 and SPL are required for cytokinin and auxin signaling during ovule development in *Arabidopsis*. *Plant Cell* 24, 2886–2897. doi: 10.1105/tpc.112.10016
- Bhatt, A. M., Etchells, J. P., Canales, C., Lagodienko, A., and Dickinson, H. (2004). VAAMANA-a BEL1-like homeodomain protein, interacts with *KNOX* proteins BP and STM and regulates inflorescence stem growth in *Arabidopsis*. *Gene* 328, 103–111. doi: 10.1016/j.gene.2003.12.033
- Bolduc, N., and Hake, S. (2009). The maize transcription factor *KNOTTED1* directly regulates the gibberellin catabolism gene *ga2ox1*. *Plant Cell* 21, 1647–1658. doi: 10.1105/tpc.109.068221
- Bolduc, N., Yilmaz, A., Mejia-Guerra, M. K., Morohashi, K., Connor, D. O., Grote-wold, E., et al. (2012). Unraveling the *KNOTTED1* regulatory network in maize meristems. *Genes Dev.* 26, 1685–1690. doi: 10.1101/gad.193433.112
- Bowman, J. L., Drews, G. N., and Meyerowitz, E. M. (1991). Expression of the *Arabidopsis* floral homeotic gene AGAMOUS is restricted to specific cell types late in flower development. *Plant Cell* 3, 749–758. doi: 10.1105/tpc.3.8.749
- Bowman, J. L., Smyth, D. R., and Meyerowitz, E. M. (1989). Genes directing flower development in *Arabidopsis*. *Plant Cell* 1, 37–52. doi: 10.1105/tpc.1.1.37
- Brambilla, V., Battaglia, R., Colombo, M., Masiero, S., Bencivenga, S., Kater, M. M., et al. (2007). Genetic and molecular interactions between *BELL1* and *MADS* box factors support ovule development in *Arabidopsis*. *Plant Cell* 19, 2544–2556. doi: 10.1105/tpc.107.051797
- Byrne, M. E., Barley, R., Curtis, M., Arroyo, J. M., Dunham, M., Hudson, A., et al. (2000). Asymmetric leaves1 mediates leaf patterning and stem cell function in *Arabidopsis*. *Nature* 408, 967–971. doi: 10.1038/35050091
- Byrne, M. E., Groover, A. T., Fontana, J. R., and Martienssen, R. A. (2003). Phyl-lotactic pattern and stem cell fate are determined by the *Arabidopsis* homeobox gene BELLRINGER. *Development* 130, 3941–3950. doi: 10.1242/dev.00620
- Chen, H., Banerjee, A. K., and Hannapel, D. J. (2004). The tandem complex of *BEL* and *KNOX* partners is required for transcriptional repression of *ga2ox1*. *Plant J.* 38, 276–284. doi: 10.1111/j.1365-313X.2004.02048.x
- Chiang, H. H., Hwang, I., and Goodman, H. M. (1995). Isolation of the *Arabidopsis* GA4 locus. *Plant Cell* 7, 195–201. doi: 10.1105/tpc.7.2.195
- Colombo, L., Battaglia, R., and Kater, M. M. (2008). *Arabidopsis* ovule development and its evolutionary conservation. *Trends Plant Sci.* 13, 444–450. doi: 10.1016/j.tplants.2008.04.011
- Dinneny, J. R., Weigel, D., and Yanofsky, M. F. (2005). A genetic framework for fruit patterning in *Arabidopsis thaliana*. *Development* 132, 4687–4696. doi: 10.1242/dev.02062
- Drews, G. N., Bowman, J. L., and Meyerowitz, E. M. (1991). Negative regulation of the *Arabidopsis* homeotic gene AGAMOUS by the APETALA2 product. *Cell* 65, 991–1002. doi: 10.1016/0092-8674(91)90551-9
- Durbak, A. R., and Tax, F. E. (2011). CLAVATA signaling pathway receptors of *Arabidopsis* regulate cell proliferation in fruit organ formation as well as in meristems. *Genetics* 189, 177–194. doi: 10.1534/genetics.111.130930
- Endrizzi, K., Moussian, B., Haecker, A., Levin, J. Z., and Laux, T. (1996). The SHOOT MERISTEMLESS gene is required for maintenance of undifferentiated cells in *Arabidopsis* shoot and floral meristems and acts at a different regulatory level than the meristem genes WUSCHEL and ZWILLE. *Plant J.* 10, 967–979. doi: 10.1046/j.1365-313X.1996.10060967.x
- Etchells, J., Moore, L., and Jiang, W. (2012). A role for BELLRINGER in cell wall development is supported by loss-of-function phenotypes. *BMC Plant Biol.* 12:212. doi: 10.1186/1471-2229-12-212

- Ferrández, C., Fourquin, C., Nathanael, P., Scutt, C., Sundberg, E., Christophe, T., et al. (2010). Carpel development. *Adv. Bot. Res.* 1–73.
- Ferrández, C., Pelaz, S., and Yanofsky, M. F. (1999). Control of carpel and fruit development in *Arabidopsis*. *Annu. Rev. Biochem.* 68, 321–354. doi: 10.1146/annurev.biochem.68.1.321
- Frohlich, M. W. (2003). An evolutionary scenario for the origin of flowers. *Nat. Rev. Genet.* 4, 559–566. doi: 10.1038/nrg1114
- Di Giacomo, E., Iannelli, M., and Frugis, G. (2013). TALE and Shape: how to Make a Leaf Different. *Plants* 2, 317–342. doi: 10.3390/plants2020317
- Galbiati, F., Sinha Roy, D., Simonini, S., Cucinotta, M., Ceccato, L., Cuesta, C., et al. (2013). An integrative model of the control of ovule primordia formation. *Plant J.* 76, 446–455. doi: 10.1111/tpj.12309
- Girin, T., Sorefan, K., and Østergaard, L. (2009). Meristematic sculpting in fruit development. *J. Exp. Bot.* 60, 1493–1502. doi: 10.1093/jxb/erp031
- González-Reig, S., Ripoll, J. J., Vera, A., Yanofsky, M. F., and Martínez-Laborda, A. (2012). Antagonistic gene activities determine the formation of pattern elements along the mediolateral axis of the *Arabidopsis* fruit. *PLoS Genet.* 8:e1003020. doi: 10.1371/journal.pgen.1003020
- Groß-Hardt, R., Lenhard, M., and Laux, T. (2002). WUSCHEL signaling functions in interregional communication during *Arabidopsis* ovule development. *Genes Dev.* 1129–1138. doi: 10.1101/gad.225202
- Hackbusch, J., Richter, K., Müller, J., Salamini, F., and Uhrig, J. F. (2005). A central role of *Arabidopsis thaliana* ovate family proteins in networking and subcellular localization of 3-aa loop extension homeodomain proteins. *Proc. Natl. Acad. Sci. U.S.A.* 102, 4908–4912. doi: 10.1073/pnas.0501181102
- Hake, S., Smith, H. M. S., Holtan, H., Magnani, E., Mele, G., and Ramirez, J. (2004). The Role of KNOX Genes in Plant Development. *Annu. Rev. Cell Dev. Biol.* 20, 126–151. doi: 10.1146/annurev.cellbio.20.031803.093824
- Hake, S., and Völlbrecht, E. (1989). Cloning Knotted, the dominant morphological mutant in maize using Ds2 as a transposon tag. *EMBO* 8, 15–22.
- Hamant, O., and Pautot, V. (2010). Plant development: a TALE story. *C. R. Biol.* 333, 371–381. doi: 10.1016/j.crv.2010.01.015
- Hay, A., and Tsiantis, M. (2010). KNOX genes: versatile regulators of plant development and diversity. *Development* 136, 3153–3165. doi: 10.1242/dev.030049
- Honma, T., and Goto, K. (2001). Complexes of MADS-box proteins are sufficient to convert leaves into floral organs. *Nature* 409, 525–529.
- Jasinski, S., Piazza, P., Craft, J., Hay, A., Woolley, L., Rieu, I., et al. (2005). KNOX action in *Arabidopsis* is mediated by coordinate regulation of cytokinin and gibberellin activities. *Curr. Biol.* 15, 1560–1565. doi: 10.1016/j.cub.2005.07.023
- Khan, M., Xu, M., Murmu, J., Tabb, P., Liu, Y., Storey, K., et al. (2012a). Antagonistic interaction of BLADE-ON-PETIOLE1 and 2 with BREVIPEDICELLUS and PENNYWISE regulates *Arabidopsis* inflorescence architecture. *Plant Physiol.* 158, 946–960. doi: 10.1104/pp.111.188573
- Khan, M., Tabb, P., and Hepworth, S. R. (2012b). BLADE-ON-PETIOLE1 and 2 regulate *Arabidopsis* inflorescence architecture in conjunction with homeobox genes KNAT6 and ATH1. *Plant Signal. Behav.* 7, 1–5. doi: 10.4161/psb.20599
- Kim, D., Cho, Y. H., Ryu, H., Kim, Y., Kim, T. H., and Hwang, I. (2013). BLH1 and KNAT3 modulate ABA responses during germination and early seedling development in *Arabidopsis*. *Plant J.* 75, 755–766. doi: 10.1111/tpj.12236
- Kimura, S., Koenig, D., and Kang, J. (2008). Natural variation in leaf morphology results from mutation of a novel KNOX gene. *Curr. Biol.* 18, 1–6. doi: 10.1016/j.cub.2008.04.008
- Koornneef, M., and van der Veen, J. H. (1980). Induction and analysis of gibberellin sensitive mutants in *Arabidopsis thaliana* (L.) heynh. *Theor. Appl. Genet.* 58, 257–263. doi: 10.1007/BF00265176
- Kumar, R., Kushalappa, K., Godt, D., Pidkovich, M. S., Pastorelli, S., Hepworth, S. R., et al. (2007). The *Arabidopsis* BEL1-LIKE HOMEODOMAIN proteins SAW1 and SAW2 act redundantly to regulate KNOX expression spatially in leaf margins. *Plant Cell* 19, 2719–2735. doi: 10.1105/tpc.106.048769
- Larsson, E., Franks, R. G., and Sundberg, E. (2013). Auxin and the *Arabidopsis thaliana* gynoecium. *J. Exp. Bot.* 64, 2619–2627. doi: 10.1093/jxb/ert099
- Lee, J. H., Lin, H., Joo, S., and Goodenough, U. (2008). Early sexual origins of homeoprotein heterodimerization and evolution of the plant KNOX/BELL family. *Cell* 133, 829–840. doi: 10.1016/j.cell.2008.04.028
- Lenhard, M., Bohnert, A., Jürgens, G., and Laux, T. (2001). Termination of stem cell maintenance in *Arabidopsis* floral meristems by interactions between WUSCHEL and AGAMOUS. *Cell* 105, 805–814. doi: 10.1016/S0092-8674(01)00390-7
- Liljegren, S. J., Roeder, A. H., Kempin, S. A., Gremski, K., Østergaard, L., Guimil, S., et al. (2004). Control of fruit patterning in *Arabidopsis* by indehiscent. *Cell* 116, 843–853. doi: 10.1016/S0092-8674(04)00217-X
- Lodha, M., Marco, C. F., and Timmermans, M. C. P. (2013). The ASYMMETRIC LEAVES complex maintains repression of KNOX homeobox genes via direct recruitment of Polycomb-repressive complex2. *Genes Dev.* 27, 596–601. doi: 10.1101/gad.211425.112
- Lohmann, J. U., Hong, R. L., Hobe, M., Busch, M. A., Parcy, F., Simon, R., et al. (2001). A molecular link between stem cell regulation and floral patterning in *Arabidopsis*. *Cell* 105, 793–803. doi: 10.1016/S0092-8674(01)00384-1
- Long, J. A., Moan, E. I., Medford, J. I., and Barton, M. K. (1996). A member of the KNOTTED class of homeodomain proteins encoded by the STM gene of *Arabidopsis*. *Nature* 379, 66–69. doi: 10.1038/379066a0
- Luo, M., Yu, C.-W., Chen, F.-F., Zhao, L., Tian, G., Liu, X., et al. (2012). Histone deacetylase HDA6 is functionally associated with AS1 in repression of KNOX genes in *Arabidopsis*. *PLoS Genet.* 8:e1003114. doi: 10.1371/journal.pgen.1003114
- Magnani, E., and Hake, S. (2008). KNOX Lost the OX: the *Arabidopsis* KNATM gene defines a novel class of KNOX transcriptional regulators missing the homeodomain. *Plant Cell* 20, 875–887. doi: 10.1105/tpc.108.058495
- Mele, G., Ori, N., Sato, Y., and Hake, S. (2003). The knotted1-like homeobox gene BREVIPEDICELLUS regulates cell differentiation by modulating metabolic pathways. *Genes Dev.* 17, 2088–2093. doi: 10.1101/gad.1120003
- Modrusan, Z., Reiser, L., Feldmann, K. A., Fischer, R. L., and Haughn, G. W. (1994). Homeotic transformation of ovules into carpel-like structures in *Arabidopsis*. *Plant Cell* 6, 333–349. doi: 10.1105/tpc.6.3.333
- Mukherjee, K., Brocchieri, L., and Bürglin, T. R. (2009). A comprehensive classification and evolutionary analysis of plant homeobox genes. *Mol. Biol. Evol.* 26, 2775–94. doi: 10.1093/molbev/msp201
- Ogawa, M., Kay, P., Wilson, S., and Swain, S. M. (2009). *Arabidopsis* DEHISCENCE ZONE POLYGALACTURONASE1 (ADPG1), ADPG2, and QUARTET2 are Polygalacturonases required for cell separation during reproductive development in *Arabidopsis*. *Plant Cell* 21, 216–233. doi: 10.1105/tpc.108.063768
- Peaucelle, A., Louvet, R., Johansen, J. N., Salsac, F., Morin, H., Fournet, E., et al. (2011). The transcription factor BELLINGER modulates phyllotaxis by regulating the expression of a pectin methyltransferase in *Arabidopsis*. *Development* 138, 4733–4741. doi: 10.1242/dev.072496
- Pelaz, S., Tapia-López, R., Alvarez-Buylla, E. R., and Yanofsky, M. F. (2001). Conversion of leaves into petals in *Arabidopsis*. *Curr. Biol.* 11, 182–184. doi: 10.1016/S0960-9822(01)00024-0
- Phelps-Durr, T. L., Thomas, J., Vahab, P., and Timmermans, M. C. P. (2005). Maize rough sheath2 and its *Arabidopsis* orthologue ASYMMETRIC LEAVES1 interact with HIRA, a predicted histone chaperone, to maintain knox gene silencing and determinacy during organogenesis. *Plant Cell* 17, 2886–2898. doi: 10.1105/tpc.105.035477.1
- Ragni, L., Belles-Boix, E., Gunl, M., and Pautot, V. (2008). Interaction of KNAT6 and KNAT2 with BREVIPEDICELLUS and PENNYWISE in *Arabidopsis* Inflorescences. *Plant Cell* 20, 888–900. doi: 10.1105/tpc.108.058230
- Ray, A., Robinson-beerst, K. A. Y., Ray, S., Bakert, S. C., Lang, J. D., Preuss, D., et al. (1994). *Arabidopsis* floral homeotic gene BELL (BEL1) controls ovule development through negative regulation of AGAMOUS gene (AG). *Proc. Natl. Acad. Sci. U.S.A.* 91, 5761–5765. doi: 10.1073/pnas.91.13.5761
- Reiser, L., Modrusan, Z., Margossian, L., Samach, A., Ohad, N., Haughn, G. W., et al. (1995). The BELL1 gene encodes a homeodomain involved in pattern formation in the *Arabidopsis* ovule primordium. *Cell* 83, 735–742. doi: 10.1016/0092-8674(95)90186-8
- Reyes-olalde, J. I., Zuniga-Mayo, V. M., Chavez Montes, R. A., Marsch-Martinez, N., and de Folter, S. (2013). Inside the gynoecium: at the carpel margin. *Trends Plant Sci.* 18, 644–655. doi: 10.1016/j.tplants.2013.08.002
- Ripoll, J. J., Roeder, A. H. K., Ditta, G. S., and Yanofsky, M. F. (2011). A novel role for the floral homeotic gene APETALA2 during *Arabidopsis* fruit development. *Development* 138, 5167–76. doi: 10.1242/dev.073031
- Robinson-Beers, K., Pruitt, R. E., and Gasser, C. S. (1992). Ovule development in wild-type *Arabidopsis* and two female-sterile mutants. *Plant Cell* 4, 1237–1249. doi: 10.1105/tpc.4.10.1237
- Roeder, A. H. K., Ferra, C., and Yanofsky, M. F. (2003). The role of the REPLUMLESS homeodomain protein in patterning the *Arabidopsis* fruit. *Curr. Biol.* 13, 1630–1635. doi: 10.1016/j.cub.2003.08.027

- Roeder, A. H. K., and Yanofsky, M. F. (2006). Fruit development in *Arabidopsis*. *Arabidopsis Book* 4:e0075. doi: 10.1199/tab.0075.
- Romera-Branchat, M., Ripoll, J. J., Yanofsky, M. F., and Pelaz, S. (2012). The *WOX13* homeobox gene promotes replum formation in the *Arabidopsis thaliana* fruit. *Plant J.* 37–49. doi: 10.1111/tjp.12010
- Rutjens, B., Bao, D., van Eck-Stouten, E., Brand, M., Smeekens, S., and Proveniers, M. (2009). Shoot apical meristem function in *Arabidopsis* requires the combined activities of three BEL1-like homeodomain proteins. *Plant J.* 58, 641–654. doi: 10.1111/j.1365-313X.2009.03809.x
- Sablowski, R. (2011). Plant stem cell niches: from signalling to execution. *Curr. Opin. Plant Biol.* 14, 4–9. doi: 10.1016/j.pbi.2010.08.001
- Sakamoto, T., Kamiya, N., Ueguchi-tanaka, M., Iwahori, S., and Matsuoka, M. (2001). KNOX homeodomain protein directly suppresses the expression of a gibberellin biosynthetic gene in the tobacco shoot apical meristem. *Gene* 15, 581–590. doi: 10.1101/gad.867901
- Scotfield, S., Dewitte, W., and Murray, J. A. (2007). The KNOX gene SHOOT MERISTEMLESS is required for the development of reproductive meristematic tissues in *Arabidopsis*. *Plant J.* 50, 767–781. doi: 10.1111/j.1365-313X.2007.03095.x
- Shi, C.-L., Stenvik, G.-E., Vie, A. K., Bones, A. M., Pautot, V., Proveniers, M., et al. (2011). *Arabidopsis* class I KNOTTED-like homeobox proteins act downstream in the IDA-HAE/HSL2 floral abscission signaling pathway. *Plant Cell* 23, 2553–2567. doi: 10.1105/tpc.111.084608
- Shi, D.-Q., and Yang, W.-C. (2011). Ovule development in *Arabidopsis*: progress and challenge. *Curr. Opin. Plant Biol.* 14, 74–80. doi: 10.1016/j.pbi.2010.09.001
- Smith, H. M., Boschke, I., and Hake, S. (2002). Selective interaction of plant homeodomain proteins mediates high DNA-binding affinity. *Proc. Natl. Acad. Sci. U.S.A.* 99, 9579–9584. doi: 10.1073/pnas.092271599
- Smith, H. M., and Hake, S. (2003). The interaction of two homeobox genes, BREVIPEDICELLUS and PENNYWISE, regulates internode patterning in the *Arabidopsis* inflorescence. *Plant Cell* 15, 1717–1727. doi: 10.1105/tpc.012856
- Smyth, D. R., Bowman, J. L., and Meyerowitz, E. M. (1990). Early flower development in *Arabidopsis*. *Plant Cell* 2, 755–767. doi: 10.1105/tpc.2.8.755
- Sorefan, K., Girin, T., Liljegren, S. J., Ljung, K., Robles, P., Galván-Ampudia, C. S., et al. (2009). A regulated auxin minimum is required for seed dispersal in *Arabidopsis*. *Nature* 459, 583–586. doi: 10.1038/nature07875
- Spinelli, S. V., Martin, A. P., Viola, I. L., Gonzalez, D. H., and Palatnik, J. F. (2011). A mechanistic link between STM and CUC1 during *Arabidopsis* development. *Plant Physiol.* 156, 1894–1904. doi: 10.1104/pp.111.177709
- Sun, B., Xu, Y., Ng, K., and Ito, T. (2009). A timing mechanism for stem cell maintenance and differentiation in the *Arabidopsis* floral meristem. *Genes Dev.* 23, 1791–1804. doi: 10.1101/gad.1800409
- Venglat, S. P., Dumonceaux, T., Rozwadowski, K., Parnell, L., Babic, V., Keller, W., et al. (2002). The homeobox gene BREVIPEDICELLUS is a key regulator of inflorescence architecture in *Arabidopsis*. *Proc. Natl. Acad. Sci. U.S.A.* 99, 4730–4735. doi: 10.1073/pnas.072626099
- Wang, X. Q., Xu, W. H., Ma, L. G., Fu, Z. M., Deng, X. W., Li, J. Y., et al. (2006). Requirement of KNAT1/BP for the development of abscission zones in *Arabidopsis thaliana*. *J. Integr. Plant Biol.* 48, 15–26. doi: 10.1111/j.1365-313X.2007.03096.x
- Wolf, S., Mouille, G., and Pelloux, J. (2009). Homogalacturonan methylesterification and plant development. *Mol. Plant* 2, 851–860. doi: 10.1093/mp/ssp066
- Xu, X. M., Wang, J., Xuan, Z., Goldshmidt, A., Borrill, P. G. M., Hariharan, N., et al. (2011). Chaperonins facilitate KNOTTED1 cell-to-cell trafficking and stem cell function. *Science* 333, 1141–1144. doi: 10.1126/science.1205727
- Yu, L., Patibanda, V., and Smith, H. M. S. (2009). A novel role of BELL1-like homeobox genes, PENNYWISE and POUND-FOOLISH, in floral patterning. *Planta* 229, 693–707. doi: 10.1007/s00425-008-0867-861

Conflict of Interest Statement: The authors declare that the research was conducted in the absence of any commercial or financial relationships that could be construed as a potential conflict of interest.

Received: 12 December 2013; accepted: 25 February 2014; published online: 20 March 2014.

Citation: Arnaud N and Pautot V (2014) Ring the BELL and tie the KNOX: roles for TALEs in gynoecium development. *Front. Plant Sci.* 5:93. doi: 10.3389/fpls.2014.00093
This article was submitted to *Plant Evolution and Development*, a section of the journal *Frontiers in Plant Science*.

Copyright © 2014 Arnaud and Pautot. This is an open-access article distributed under the terms of the Creative Commons Attribution License (CC BY). The use, distribution or reproduction in other forums is permitted, provided the original author(s) or licensor are credited and that the original publication in this journal is cited, in accordance with accepted academic practice. No use, distribution or reproduction is permitted which does not comply with these terms.