



## Heterogeneous growth-induced prestrain in the heart

Martin Genet, Manuel Rausch, Lik Chuan Lee, S Choy, X Zhao, Ghassan S. Kassab, Sebastian Kozerke, Julius M. Guccione, Ellen Kuhl

### ► To cite this version:

Martin Genet, Manuel Rausch, Lik Chuan Lee, S Choy, X Zhao, et al.. Heterogeneous growth-induced prestrain in the heart. *Journal of Biomechanics*, 2015, pp.10. 10.1016/j.jbiomech.2015.03.012 . hal-01196418

**HAL Id: hal-01196418**

**<https://hal.science/hal-01196418>**

Submitted on 9 Sep 2015

**HAL** is a multi-disciplinary open access archive for the deposit and dissemination of scientific research documents, whether they are published or not. The documents may come from teaching and research institutions in France or abroad, or from public or private research centers.

L'archive ouverte pluridisciplinaire **HAL**, est destinée au dépôt et à la diffusion de documents scientifiques de niveau recherche, publiés ou non, émanant des établissements d'enseignement et de recherche français ou étrangers, des laboratoires publics ou privés.

# Heterogeneous growth-induced prestrain in the heart

M. Genet<sup>a,b,c,\*</sup>, M. Rausch<sup>d</sup>, L.C. Lee<sup>a,g</sup>, S. Choy<sup>h</sup>, X. Zhao<sup>h</sup>, G.S. Kassab<sup>h,i,j</sup>,  
S. Kozerke<sup>b</sup>, J.M. Guccione<sup>a</sup>, E. Kuhl<sup>d,e,f</sup>

<sup>a</sup>*Department of Surgery, School of Medicine, University of California at San Francisco, USA*

<sup>b</sup>*Institute for Biomedical Engineering, University and ETH Zürich, Switzerland*

<sup>c</sup>*Marie-Curie International Outgoing Fellow*

<sup>d</sup>*Department of Mechanical Engineering, Stanford University, California, USA*

<sup>e</sup>*Department of Bioengineering, Stanford University, California, USA*

<sup>f</sup>*Department of Cardiothoracic Surgery, Stanford University, California, USA*

<sup>g</sup>*Department of Mechanical Engineering, Michigan State University, Michigan, USA*

<sup>h</sup>*Department of Biomedical Engineering, Indiana University–Purdue University Indianapolis, USA*

<sup>i</sup>*Department of Cellular and Integrative Physiology, Indiana University–Purdue University Indianapolis, USA*

<sup>j</sup>*Department of Surgery, Indiana University–Purdue University Indianapolis, USA*

---

## Abstract

Even when entirely unloaded, biological structures are not stress-free, as shown by Y.C. Fung’s seminal opening angle experiment on arteries and the left ventricle. As a result of this prestrain, subject-specific geometries extracted from medical imaging do not represent an unloaded reference configuration necessary for mechanical analysis, even if the structure is externally unloaded. Here we propose a new computational method to create physiological residual stress fields in subject-specific left ventricular geometries using the continuum theory of fictitious configurations combined with a fixed-point iteration. We also reproduced the opening angle experiment on four swine models, to characterize the range of normal opening angle values. The proposed method generates residual stress fields which can reliably reproduce the range of opening angles between  $8.7 \pm 1.8$  and  $16.6 \pm 13.7$  as measured experimentally. We demonstrate that including the effects of prestrain reduces the left ventricular stiffness by up to 40%, thus facilitating the ventricular filling, which has a significant impact on

---

\*Corresponding author: genet@biomed.ee.ethz.ch

cardiac function. This method can improve the fidelity of subject-specific models to improve our understanding of cardiac diseases and to optimize treatment options.

*Keywords:*

Residual stress, Prestrain, Opening angle, Patient-specific modeling, Finite element method, Finite strain

---

## Contents

<b>1</b>	<b>Introduction</b>	<b>3</b>
<b>2</b>	<b>Methods</b>	<b>5</b>
2.1	Opening angle experiment . . . . .	5
2.1.1	Animal preparation . . . . .	5
2.1.2	Heart preparation . . . . .	5
2.1.3	Experimental procedure . . . . .	6
2.2	Mechanics of prestrained biological systems . . . . .	6
2.2.1	Continuum model . . . . .	6
2.2.2	Computational model . . . . .	9
2.3	Mechanics of growth-induced, prestrained biological systems . . .	10
2.3.1	Continuum model . . . . .	10
2.3.2	Computational model . . . . .	12
2.3.3	Example of growth-induced, prestrained left ventricle . . .	13
2.4	Computation of stress-free reference configuration of biological systems . . . . .	14
2.4.1	Fixed-point iteration . . . . .	14
2.4.2	Computational model . . . . .	16
<b>3</b>	<b>Results and Discussion</b>	<b>16</b>
3.1	Opening angle experiment . . . . .	16
3.2	Generating growth-induced prestrain . . . . .	17
3.3	Growth-induced prestrain in patient-specific left ventricle . . . .	19

3.4	Virtual opening angle experiment . . . . .	20
3.5	Influence of the prestrain on the ventricular mechanical response	22
4	Summary and Perspectives	24

## 1. Introduction

Biological tissues inherently contain some prestrain, or equivalently residual stress (Vaishnav and Vossoughi, 1987; Fung, 1993; Humphrey, 2002). This has been evidenced in the opening angle experiments, performed originally on the artery in (Chuong and Fung, 1986), and then on the left ventricle in (Omens and Fung, 1990). The exact origin of the prestrain is still an open question: it may be induced by inhomogeneous tissue growth, or the constant exchange of matter within the tissues and associated remodeling, cell death, and renewal, *etc.* (Fung, 1993; Humphrey, 2002). Moreover, prestrain potentially exists across multiple spatial scales, including the sub-cellular (Kumar, Maxwell, et al., 2006; Deguchi, Ohashi and Sato, 2006), cellular, and structural levels (Fung, 1993; Humphrey, 2002; Guo, Lanir and Kassab, 2007).

It is important to distinguish between these different types of prestrain. Indeed, sub-cellular prestrain surely affects the response of individual cells, but is confined to the cells and cannot be characterized on the macroscopic level (Kumar, Maxwell, et al., 2006; Deguchi, Ohashi and Sato, 2006; Webster, Ng and Fletcher, 2014). Conversely, structural, or global, residual stress (imagine a stress-free straight beam glued into a circular shape for which a single cut would release all the residual stress at once) are most probably not seen *in vivo*. In support of this, while original experiments showed that the first cut released most of the residual stress (Liu and Fung, 1989; Han and Fung, 1996), later experiments revealed that subsequent cuts always release additional residual stress (Greenwald, Moore, et al., 1997). Hence, we investigate the prestrain generated on the cellular scale, a scale where living tissues are composed of many different components in frictional contact and constant relative motion. Cellular prestrain is analogous to the one present in engineering materials (e.g.,

1 between grains in metals) or between components in composites, which is usually  
2 induced by the process or differences in coefficients of thermal expansion. It is  
3 present everywhere in living systems and it can have a tremendous impact on  
4 their macroscopic behavior.

5 To address cardiovascular diseases, one approach is the use of personalized  
6 models for quantitative diagnostic, prognostic, and treatment optimization (Lee,  
7 Genet, et al., 2014b). The current bottlenecks in personalized cardiac modeling  
8 include the assessment of myofiber architecture (Toussaint, Stoeck, et al., 2013;  
9 Harmer, Pushparajah, et al., 2013), non-invasive pressure measurement, tissue  
10 properties orthotropy and regionality (Lee, Wenk, et al., 2011; Xi, Lamata,  
11 et al., 2011; Marchesseau, Delingette, et al., 2013). Another important limita-  
12 tion is our understanding of prestrain and residual stress. Indeed, as a result  
13 of prestrain, subject-specific geometries of biological structures extracted from  
14 medical imaging do not represent the reference configuration required for me-  
15 chanical analysis, even if the images correspond to an externally unloaded state.  
16 To identify the truly unstressed reference configuration, we have to solve an in-  
17 verse problem that is highly non-linear.

18 In this paper, we propose a computational method to introduce physiolog-  
19 ical residual stress fields in subject-specific left ventricular geometries. The  
20 proposed method is embedded within the continuum theory of fictitious config-  
21 urations and uses a fixed-point iteration on the geometry itself. (Wang, Luo,  
22 et al., 2013) recently proposed an alternative approach, also using fixed-point  
23 iterations on the geometry to recover a relaxed configuration. However, they  
24 use (Shams, Destrade and Ogden, 2011)’s method to introduce residual stress  
25 in the invariant-based Holzapfel model (Holzapfel and Ogden, 2009) through  
26 additional pseudo-invariants. This implies that (i) the method is limited to  
27 invariant-based formulations, (ii) that residual stress is introduced as an *ad*  
28 *hoc* parameter to fit experimental data (Costa, May-Newman, et al., 1997), and  
29 (iii) that the resulting residual stress field is not strictly speaking divergence  
30 free, *i.e.*, auto-balanced. Here, the residual stress is generated mechanistically  
31 by the underlying biological process, heterogeneous growth, and is naturally

1 auto-balanced.

## 2 **2. Methods**

### 3 *2.1. Opening angle experiment*

#### 4 *2.1.1. Animal preparation*

5 We performed all animal experiments in accordance with national and lo-  
6 cal ethical guidelines, including the Principles of Laboratory Animal Care, the  
7 Guide for the Care and Use of Laboratory Animals (National Research Council  
8 (US) Committee for the Update of the Guide for the Care and Use of Laboratory  
9 Animals, 2011) and the National Association for Biomedical Research (Cardon,  
10 Bailey and Bennett, 2012), and an approved Indiana University Purdue Univer-  
11 sity Indianapolis IACUC protocol regarding the use of animals in research. Four  
12 Yorkshire pigs ( $55.1 \pm 3.0$  Kg body weight) of either sex were used in this study.  
13 The pigs were fasted overnight and surgical anesthesia was induced with TKX  
14 (Telazol 10 mg/kg, Ketamine 5 mg/kg, Xylazine 5 mg/kg) and maintained with  
15 1-2% Isoflurane-balance O<sub>2</sub> during acute, non-aseptic surgery. An introducer  
16 sheath was placed percutaneously in the right jugular vein for administration  
17 of drugs. The chest was opened through a mid-line sternotomy and the heart  
18 was arrested with an IV bolus injection of saturated KCl solution (20 mL) un-  
19 der deep anesthesia and proper anticoagulation with Heparin (100 IU/kg body  
20 weight).

#### 21 *2.1.2. Heart preparation*

22 The heart was excised and placed in cardioplegic solution. We cannulated  
23 and perfused the left anterior descending, the left circumflex, and the right  
24 coronary arteries with a solution (Lin and Yin, 1998) of the following composi-  
25 tion in mmol: NaCl, 127; KH<sub>2</sub>PO<sub>4</sub>, 1.3; MgSO<sub>4</sub>, 0.6; NaHCO<sub>3</sub>, 25; KCl, 2.3;  
26 CaCl<sub>2</sub>, 2.5; dextrose, 11.2; BDM (2,3 butanedione monoxime, Sigma, St. Louis,  
27 MO), 30. After perfusion, the aorta and pulmonary arteries, the right and left  
28 atria, and the right ventricular free wall were carefully cut, keeping an intact  
29 left ventricle in the shape of a cone.

### 1 2.1.3. *Experimental procedure*

2 After the first basal slice was discarded, three 1-cm-thick slices were cut  
 3 from the left ventricle (basal, equatorial, and apical) and placed in petri dishes  
 4 containing perfusion solution (see Figure 3). Two cameras were set up to pho-  
 5 tograph the cross-sectional surfaces of the slice from the top and the bottom  
 6 surfaces simultaneously. A baseline picture was taken before a radial cut was  
 7 made in the middle of the left ventricular free wall. Immediately after the cut  
 8 was made, continuous pictures were taken every five minutes for a period of 30  
 9 minutes. The opening angle was measured with a program for image processing  
 10 and analysis, ImageJ 1.44p (National Institutes of Health).

## 11 2.2. *Mechanics of prestrained biological systems*

### 12 2.2.1. *Continuum model*

13 We characterize prestrain using the concept of fictitious configurations and  
 14 introduce a stress-free reference configuration, a residually stressed but me-  
 15 chanically unloaded configuration, and residually stressed mechanically loaded  
 16 configuration (Rausch and Kuhl, 2013).

17 Figure 1 illustrates the three configurations, which can also be used to model  
 18 prestrain induced by other physical mechanisms such as friction (Hild, 1998;  
 19 Fagianio, Genet, et al., 2014). Under the small deformation hypothesis, this  
 20 decomposition induces an additive decomposition of the strain itself: The total  
 21 elastic strain is the sum of prestrain and mechanically-induced strain. Under  
 22 finite deformations, this decomposition induces a multiplicative decomposition  
 23 of the deformation gradient: The total elastic tensor  $\underline{\underline{F}}^e$  is the product of a  
 24 prestrain tensor  $\underline{\underline{F}}^p$  and the mechanically-induced deformation gradient  $\underline{\underline{F}}$ :

$$\underline{\underline{F}}^e = \underline{\underline{F}} \cdot \underline{\underline{F}}^p \quad \text{with} \quad \underline{\underline{F}} = \underline{\underline{F}}^e \cdot \underline{\underline{F}}^{p-1} = \nabla \underline{\varphi} \quad (1)$$

25 Inherent to this approach, only the mechanically-induced deformation gradient  
 26  $\underline{\underline{F}} = \nabla \underline{\varphi}$  is a gradient of a vector field, while  $\underline{\underline{F}}^e$  and  $\underline{\underline{F}}^p$  are generally incom-  
 27 patible. We can then adopt the classical finite deformation theory for nearly  
 28 incompressible bodies (Holzapfel, 2000), however, now based on the total elastic

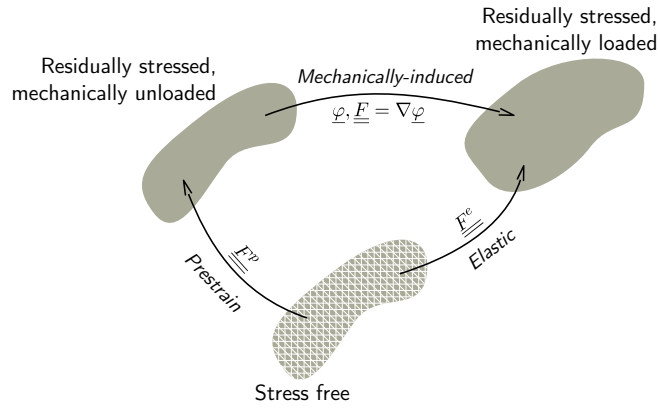


Figure 1: Kinematics of prestrained biological systems. Prestrain maps the stress-free reference configuration onto the residually stressed but mechanically unloaded configuration through the prestrain tensor  $\underline{\underline{F}}^p$ . Mechanical loading maps the residually stressed but mechanically unloaded configuration into the mechanically loaded configuration through the deformation gradient  $\underline{\underline{F}}$ . The total elastic deformation  $\underline{\underline{F}}^e$  is a result of prestrain  $\underline{\underline{F}}^p$  and mechanical deformation  $\underline{\underline{F}}$ . Only the mechanical deformation  $\underline{\underline{F}} = \nabla \underline{\varphi}$  is the gradient of a vector field, while the prestrain tensor  $\underline{\underline{F}}^p$  and the elastic tensor  $\underline{\underline{F}}^e$  are incompatible. Only the elastic tensor  $\underline{\underline{F}}^e$  generates stress.



1 tensor  $\underline{\underline{F}}^e$  instead of the purely mechanically-induced deformation gradient  $\underline{\underline{F}}$ .  
 2 This implies that we can express the strain energy potential, which is generally  
 3 a function of  $\underline{\underline{F}}$  and  $\underline{\underline{F}}^p$ , as a function of  $\underline{\underline{F}}^e$  only:

$$\psi(\underline{\underline{F}}, \underline{\underline{F}}^p) = \psi^e(\underline{\underline{F}}^e) \quad (2)$$

4 The most widely used method to impose incompressibility or quasi-incompressibility  
 5 consists of further decomposing the elastic tensor into volumetric and isochoric  
 6 parts:

$$\underline{\underline{F}}^e = \underline{\underline{F}}^v \cdot \overline{\underline{\underline{F}}}^e \quad (3)$$

7 with the volumetric contribution  $\underline{\underline{F}}^v = (J^e)^{1/3} \underline{\underline{1}}$  with  $J^e = \det(\underline{\underline{F}}^e)$  and the  
 8 isochoric contribution  $\overline{\underline{\underline{F}}}^e = (J^e)^{-1/3} \underline{\underline{F}}^e$  so that  $\overline{J}^e = \det(\overline{\underline{\underline{F}}}^e) = 1$ . As a result  
 9 of this decomposition, the independent variables are now the elastic Jacobian  
 10  $J^e$  and the isochoric elastic Cauchy-Green tensor  $\overline{\underline{\underline{E}}}^e$ :

$$J^e = \det(\underline{\underline{F}}^e) \quad \text{and} \quad \overline{\underline{\underline{E}}}^e = \frac{1}{2} \left( \overline{\underline{\underline{F}}}^{e^t} \cdot \overline{\underline{\underline{F}}}^e - \underline{\underline{1}} \right) \quad (4)$$

11 We can then split the elastic strain energy potential into volumetric and devia-  
 12 toric parts:

$$\psi^e(J^e, \overline{\underline{\underline{E}}}^e) = U(J^e) + \overline{\psi}^e(\overline{\underline{\underline{E}}}^e) \quad (5)$$

13 For the volumetric part of the strain energy function (Auricchio, Beirão da  
 14 Veiga, et al., 2013), we could suggest the following expression:

$$U(J^e) = \frac{1}{D_0} \left( \frac{1}{2} ((J^e)^2 - 1) - \ln(J^e) \right) \quad (6)$$

15 For the deviatoric part, we use a transversely isotropic Fung law (Fung, 1993)  
 16 adapted for myocardial tissue (Guccione, McCulloch and Waldman, 1991):

$$\overline{\psi}^e(\overline{\underline{\underline{E}}}^e) = \frac{1}{2} C_0 \left( \exp \left( \overline{\underline{\underline{E}}}^e : \underline{\underline{\underline{B}}}_0 : \overline{\underline{\underline{E}}}^e \right) - 1 \right) \quad (7)$$

17 where  $\underline{\underline{\underline{B}}}_0$  is a fourth-order constitutive tensor, which takes takes a diagonal  
 18 format in Voigt notation (Mehrabadi and Cowin, 1990; François, 1995):

$$\widehat{\underline{\underline{\underline{B}}}_0} = \underline{\underline{\underline{Diag}}}(B_{ff}, B_{ss}, B_{nn}, 2B_{fs}, 2B_{fn}, 2B_{sn}) \quad (8)$$

1 Its individual parameters  $B_{ff}$ ,  $B_{ss}$ ,  $B_{nn}$ ,  $B_{fs}$ ,  $B_{fn}$ , and  $B_{sn}$  weigh the influence  
2 of the normal fiber, sheet, and normal strains and of the corresponding shear  
3 components. Throughout this paper, we use the normal human myocardial  
4 properties characterized in (Genet, Lee, et al., 2014) and summarized in Table  
5 1. Note that it is well-known that the Fung law is not poly-convex (Holzapfel,  
6 Gasser and Ogden, 2000; Holzapfel and Ogden, 2009), making the proposed  
7 model not strictly speaking thermodynamically consistent. However, it is still  
8 widely used for the myocardium; for this paper we solve our model implicitly  
9 and have not encountered any material instability. Furthermore, the framework  
10 presented here for growth-induced residual stress is independent from the choice  
11 of the strain energy potential, and a convex potential could be used instead.

12 These equations can, in principle, allow us to calculate the *in vivo* stress  
13 state of the heart. Unfortunately, however, neither the initial nor the grown  
14 configuration are known. Only the residually stressed mechanically unloaded  
15 configuration and the mechanically loaded configuration can be imaged *in vivo*.  
16 In what follows, we propose a fixed-point iteration to computationally retrieve  
17 the initial configuration from the *in vivo*-acquired configuration. The core as-  
18 sumption of this algorithm is that residual stresses are a result of biological  
19 growth.

$D_0$ (kPa <sup>-1</sup> )	$C_0$ (kPa)
$10^{-3}$	0.115

$B_{ff}$ ( )	$B_{ss}$ ( )	$B_{nn}$ ( )	$B_{fs}$ ( )	$B_{fn}$ ( )	$B_{sn}$ ( )
14.4	5.76	5.76	5.04	5.04	2.88

Table 1: Normal human myocardial properties (Genet, Lee, et al., 2014) used in this paper for the ventricular simulations.

### 20 2.2.2. Computational model

21 The constitutive laws have been implemented as a user subroutine into  
22 Abaqus/Standard. The subroutine is written in C++, and use the LMT++

1 library for linear algebra (Leclerc, 2010; Genet, 2010). The implementation is  
 2 straightforward as outlined in detail in (Rausch and Kuhl, 2013).

### 3 *2.3. Mechanics of growth-induced, prestrained biological systems*

#### 4 *2.3.1. Continuum model*

5 The origin of prestrain is still an open questions today. Here, we investigate  
 6 the hypothesis that the prestrain is induced by heterogeneous growth. In order  
 7 to model the growth of biological tissues, we once again adopt the concept of  
 8 fictitious configurations and decompose the total deformation multiplicatively  
 9 into elastic, prestrain, and growth parts (Rodriguez, Hoger and McCulloch,  
 10 1994; Ambrosi, Ateshian, et al., 2011; Kuhl, 2014). This decomposition is a  
 11 very general tool, and can also be applied for instance to model tissue activation  
 12 (Rossi, Ruiz-Baier, et al., 2012; Pezzuto, Ambrosi and Quarteroni, 2014)

13 Figure 2 shows the different configurations and transformations. Similar  
 14 to the mechanics of prestrained biological systems in Section 2.2, the elastic  
 15 tensor  $\underline{\underline{F}}^e$  can be multiplicatively decomposed into the prestrain  $\underline{\underline{F}}^p$  and the  
 16 mechanically-induced deformation  $\underline{\underline{F}}'$ . Yet, we can also decompose the elastic  
 17 tensor  $\underline{\underline{F}}^e$  into the inverse growth  $\underline{\underline{F}}^g$  and the deformation gradient  $\underline{\underline{F}}$ :

$$\underline{\underline{F}}^e = \underline{\underline{F}}' \cdot \underline{\underline{F}}^p = \underline{\underline{F}} \cdot \underline{\underline{F}}^{g-1} \quad \text{with} \quad \underline{\underline{F}} = \underline{\underline{F}}' \cdot \underline{\underline{F}}^p \cdot \underline{\underline{F}}^g = \nabla \varphi \quad (9)$$

18 Note that in the special case where  $\underline{\underline{F}} = \underline{\underline{F}}'$ , we have  $\underline{\underline{F}}^p = \underline{\underline{F}}^{g-1}$ . How-  
 19 ever, in practice we only work with  $\underline{\underline{F}}^g$ , which obeys the evolution equation de-  
 20 fined in the next paragraph, and  $\underline{\underline{F}}^e$ , which contains both the prestrain  $\underline{\underline{F}}^p$  and  
 21 load-induced deformation  $\underline{\underline{F}}'$ , and is used to compute stress through the elastic  
 22 strain energy potential. Figure 2 also illustrates the heterogeneous growth-  
 23 induced prestrain map  $\underline{\underline{F}}^p$  between the incompatible grown configuration and  
 24 the residually-stressed compatible configuration.

25 Here, in order to focus on growth-induced residual stress and not on the  
 26 growth itself, we will use a simple isotropic and strain-driven growth law. In-  
 27 deed, even though it is now established that maladaptive hypertrophic processes  
 28 are largely anisotropic (Taber, 1995; Frey and Olson, 2003), physiological growth

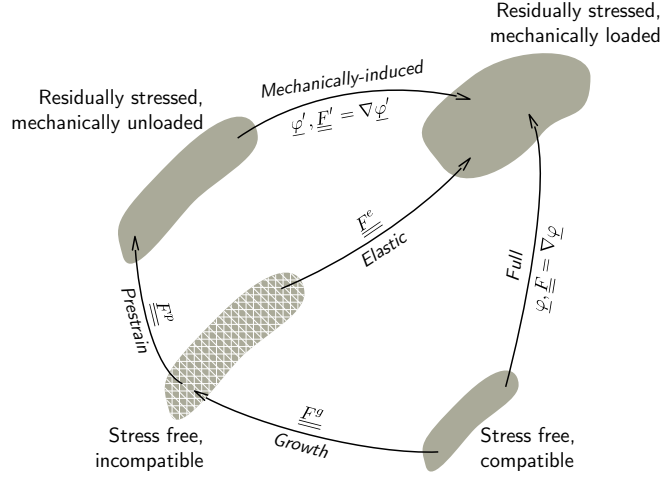


Figure 2: Kinematics of growth-induced, prestrained biological systems. Growth turns the initial, stress-free and compatible configuration into the grown, stress-free but incompatible configuration. Prestrain maps the grown, stress-free configuration onto the residually stressed but mechanically unloaded configuration through the prestrain tensor  $\underline{\underline{F}}^p$ . Mechanical loading maps the residually stressed but mechanically unloaded configuration into the mechanically loaded configuration through the deformation gradient  $\underline{\underline{F}}'$ . The total elastic deformation  $\underline{\underline{F}}^e$  is a result of prestrain  $\underline{\underline{F}}^p$  and mechanical deformation  $\underline{\underline{F}}'$ . The full deformation  $\underline{\underline{F}}$  is a result of growth  $\underline{\underline{F}}^g$ , prestrain  $\underline{\underline{F}}^p$ , and mechanical deformation  $\underline{\underline{F}}'$ . Only the full deformation  $\underline{\underline{F}} = \nabla \underline{\underline{\varphi}}$  and mechanically-induced deformation  $\underline{\underline{F}}' = \nabla \underline{\underline{\varphi}}'$  are gradients of a vector field, while the growth tensor  $\underline{\underline{F}}^g$ , the prestrain tensor  $\underline{\underline{F}}^p$ , and the elastic tensor  $\underline{\underline{F}}^e$  are incompatible. Note that Figure 2 becomes identical to Figure 1 if  $\underline{\underline{F}}^g = \underline{\underline{1}}$ .

1 must involve both longitudinal and transverse growth, and isotropic growth is  
 2 the simplest growth model that can generate residual stresses. Moreover, even  
 3 though the hormonal mechanisms underlying tissue growth are complex and  
 4 beyond the scope of this study, it is now accepted that hormonal signals are  
 5 strongly regulated by mechanical signals, and that mechanotransduction, espe-  
 6 cially stretch-sensitivity, is one of the fundamental processes underlying tissue  
 7 growth (Maillet, van Berlo and Molkenin, 2013). Note that elastic strain and  
 8 stress are coupled through the constitutive relationship and not mutually in-  
 9 dependent, so a stress-driven law could be used as well. To characterize the  
 10 kinematics of growth we can thus parameterize the growth tensor  $\underline{\underline{F}}^g$  in terms  
 11 of a single scalar-valued growth multiplier  $\vartheta^g$ :

$$\underline{\underline{F}}^g = \vartheta^g \underline{\underline{1}} \quad (10)$$

12 To characterize the kinetics of growth, we assume that growth evolves in time  
 13 according to the following evolution law:

$$\dot{\vartheta}^g = \frac{1}{\tau} \text{tr}(\underline{\underline{E}}^e) \quad (11)$$

14 where  $\tau$  is a time constant for growth. Since it is the only time constant of the  
 15 problem, we simply set it to 1, and consider all other time-dependent quantities  
 16 in terms of it. This implies that the driving force for growth is the trace of the  
 17 elastic deformation  $\underline{\underline{E}}^e$ .

### 18 2.3.2. Computational model

Similar to the elasticity part in Section 2.2, we implemented the growth  
 model as a user subroutine into the finite element package Abaqus/Standard.  
 Since growth is driven by the elastic strains  $\underline{\underline{E}}^e$ , which are in turn affected by  
 growth as  $\underline{\underline{F}}^e = \underline{\underline{F}} \cdot \underline{\underline{F}}^{g-1}$ , we iteratively determine the growth multiplier  $\vartheta^g$  at  
 the integration point level at every global iteration step. Rather than using a  
 consistent Newton-Raphson procedure, which requires a consistent algorithmic  
 linearization (Göktepe, Abilez and Kuhl, 2010; Göktepe, Abilez, et al., 2010), we  
 adopt a local fixed-point iteration, supplemented by Aitken’s relaxation (Genet,

(Marcin and Ladevèze, 2013). For the time integration, we use an implicit mid-point rule. This results in the following algorithm to determine the local growth multiplier  $\vartheta^g$ :

$$\left\{ \begin{array}{ll} \text{given: } \vartheta_t^g ; \underline{\underline{F}}_{t+1} ; \Delta t & \\ \text{initialize growth rate and iteration counter: } \dot{\vartheta}_{t+1/2}^g = 0 ; n_{\text{iter}} = 0 & \\ \text{loop} & \\ \quad \text{update iteration counter:} & n_{\text{iter}} = n_{\text{iter}} + 1 \\ \quad \text{update growth:} & \vartheta_{t+1}^g = \vartheta_t^g + \dot{\vartheta}_{t+1/2}^g \Delta t \\ \quad \text{calculate elastic deformation:} & \underline{\underline{E}}_{t+1}^e = \frac{1}{2} \left( \frac{1}{(\vartheta_{t+1}^g)^2} \underline{\underline{F}}_{t+1}^t \cdot \underline{\underline{F}}_{t+1} - \underline{\underline{1}} \right) \\ \quad \text{evaluate residual:} & \begin{cases} \text{if } (n_{\text{iter}} > 1) \text{ then } r^{\text{old}} = r \\ r = \dot{\vartheta}_{t+1/2}^g - \frac{1}{\tau} \text{tr} \left( \frac{\underline{\underline{E}}_t^e + \underline{\underline{E}}_{t+1}^e}{2} \right) \end{cases} \\ \quad \text{check convergence:} & \text{if } (r < \text{tolerance}) \text{ then exit loop} \\ \quad \text{calculate relaxation:} & \begin{cases} \text{if } (n_{\text{iter}} = 0) \text{ or } (r = r^{\text{old}}) \text{ then } \alpha = 1 \\ \text{else } \alpha = -\alpha r^{\text{old}} / (r - r^{\text{old}}) \end{cases} \\ \quad \text{update growth rate:} & \dot{\vartheta}_{t+1/2}^g = \dot{\vartheta}_{t+1/2}^g - \alpha r \\ \text{end loop} & \end{array} \right.$$

- 1 For a tolerance of  $\text{tol} = 10^{-6}$ , the algorithm converges rapidly in only a few
- 2 iterations.

### 3 2.3.3. Example of growth-induced, prestrained left ventricle

4 Throughout this paper, we will illustrate our proposed method on a patient-  
5 specific left ventricular model of a healthy human (Genet, Lee, et al., 2014).  
6 This model characterizes healthy human ventricular mechanics. Briefly, the ge-  
7 ometry was extracted from magnetic resonance images by manual segmentation,  
8 and triangulated using linear hexahedrons. A generic myofiber orientation field,  
9 with linearly varying helix angle from  $+60^\circ$  at the endocardium to  $-60^\circ$  at the  
10 epicardium (Streeter and Bassett, 1966; Streeter, Spotnitz, et al., 1969), was  
11 assigned to the mesh. We use a standard displacement finite element method,

1 with fully implicit time stepping. In terms of boundary conditions, we con-  
 2 strain normal displacement of the basal nodes, and apply pressure loading at  
 3 the endocardial faces.

4 To introduce residual stresses in a subject-specific geometry, we solve the  
 5 following problem: We load the left ventricle to a given ventricular pressure  $\bar{P}$ ,  
 6 then keep the pressure constant for a time  $\bar{t}$  to allow the ventricle to grow, and  
 7 then gradually remove the pressure. Growth duration  $\bar{t}$  is usually expressed  
 8 as a function of the growth time constant  $\tau$ , which is the only time constant  
 9 of the problem. As a result of heterogeneous growth, the final configuration  
 10 is unloaded, but not stress free, *i.e.*, residually stressed. Our goal is now to  
 11 iteratively determine the reference configuration for which the *in vivo* grown  
 12 geometry for given a given  $\bar{P}$  and time  $\bar{t}$  matches our subject-specific imaging  
 13 data. The following section describes how we identify the reference configuration  
 14 using fixed-point iterations.

## 15 2.4. Computation of stress-free reference configuration of biological systems

### 16 2.4.1. Fixed-point iteration

17 As discussed in Section 2.3 and illustrated in Figure 2, the mechanically un-  
 18 loaded configuration from medical imaging is not a true reference configuration  
 19 in the continuum mechanics sense since it is residually stressed. The stress free  
 20 reference configuration is unknown and has to be determined iteratively. A com-  
 21 mon approach to this problem is to solve the so-called inverse elastic problem  
 22 (Govindjee and Mihalic, 1996, 1998). Yet, this approach requires non-standard  
 23 formulations and solvers on the continuum and discrete levels. Here we suggest  
 24 an alternative fixed-point-based approach, which requires only modular modifi-  
 25 cations to the original forward problem. Fixed-point iterations have originally  
 26 been proposed by (Sellier, 2011), and have recently been adopted for in the con-  
 27 text of cardiac mechanics by (Wang, Gao, et al., 2013; Wang, Luo, et al., 2013;  
 28 Krishnamurthy, Villongco, et al., 2013). However, previous approaches have  
 29 only used the fixed-point iteration to identify the reference configuration asso-  
 30 ciated with a loaded *in vivo* configuration. Here, we use it to find the reference

1 configuration associated with an unloaded *in vivo* configuration. We assume  
 2 that this unloaded structure contains heterogeneous growth-induced residual  
 3 stresses.

4 Let  $\underline{X}_{\text{ref}}$  denote the nodal positions of the residually stressed, mechanically  
 5 unloaded configuration obtained, e.g., from *in vivo* imaging. The objective of  
 6 the fixed-point iteration is to find the nodal positions  $\underline{X}$  of the stress-free, in-  
 7 compatible configuration that will deform into  $\underline{X}_{\text{ref}}$  through the loading-growth-  
 8 unloading scenario described in Section 2.3. Similar to the fixed-point iteration  
 9 solver used for the growth law in Section 2.3.2, we adopt Aitken's relaxation  
 10 (Aitken, 1950) to improve convergence. For time integration, we use here an  
 11 implicit backward Euler scheme. The algorithm to iteratively determine the  
 12 nodal positions  $\underline{X}$  in the stress-free configuration looks as follows:

$$\left\{ \begin{array}{l} \text{given: } \underline{X}_{\text{ref}} ; \underline{X}_{\text{init}} \\ \text{initialize configuration and iteration counter: } \underline{X} = \underline{X}_{\text{init}} ; n_{\text{iter}} = 0 \\ \text{loop} \\ \quad \left| \begin{array}{l} \text{update iteration counter: } n_{\text{iter}} = n_{\text{iter}} + 1 \\ \text{for given } \underline{X}, \bar{P} \text{ and } \bar{t}, \\ \text{solve growth problem : } \underline{X}_{\text{def}} \\ \text{evaluate residual: } \begin{cases} \text{if } (n_{\text{iter}} > 1) \text{ then } \underline{R}^{\text{old}} = \underline{R} \\ \underline{R} = \underline{X}_{\text{def}} - \underline{X}_{\text{ref}} \end{cases} \\ \text{check convergence: } \text{if } (\max(\underline{R}) < \text{tolerance}) \text{ then exit loop} \\ \text{calculate relaxation: } \begin{cases} \text{if } (n_{\text{iter}} = 0) \text{ or } (\underline{R} = \underline{R}^{\text{old}}) \text{ then } \alpha = 1 \\ \text{else } \alpha = -\alpha \frac{\underline{R}^{\text{old}} \cdot (\underline{R} - \underline{R}^{\text{old}})}{(\underline{R} - \underline{R}^{\text{old}}) \cdot (\underline{R} - \underline{R}^{\text{old}})} \end{cases} \\ \text{update configuration: } \underline{X} = \underline{X} - \alpha \underline{R} \end{array} \right. \\ \text{end loop} \end{array} \right.$$

13 Here  $\underline{X}_{\text{init}}$  are the initial nodal position of the stress-free reference config-  
 14 uration, and  $\underline{X}_{\text{def}}$  are the deformed nodal position after the loading-growth-  
 15 unloading procedure. This implies that  $\underline{X}_{\text{init}}$  could, but does not have to, be



1 equal to  $\underline{X}_{\text{ref}}$ . Similar to the algorithm in Section 2.3.2, the fixed-point iteration  
2 converges rapidly in a few iterations for a tolerance of  $10^{-1}$  mm.

### 3 2.4.2. Computational model

4 We implemented the fixed-point iteration as a python script, which solves  
5 the growth problem inside the inner loop using Abaqus/Standard and then  
6 post-processes the nodal positions.

## 7 3. Results and Discussion

### 8 3.1. Opening angle experiment

9 Figure 3 illustrates our opening angle experiment. It shows an isolated heart  
10 slice before (left) and after (right) cutting the slice radially in the middle of the  
11 left ventricular free wall.

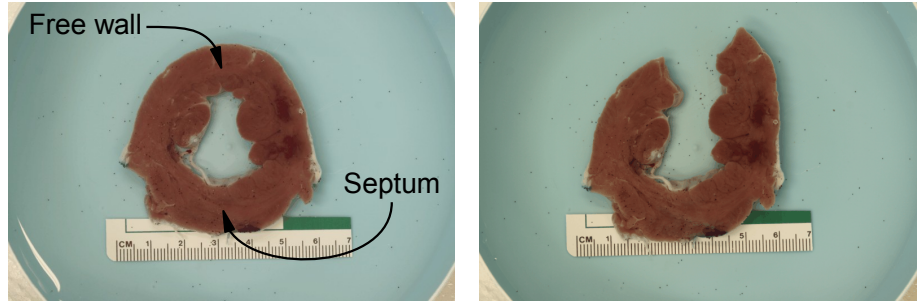


Figure 3: Opening angle experiment. Isolated heart slice before (left) and after (right) radial cutting in the middle of the left ventricular free wall.

	Basal slice	Equatorial slice	Apical slice
Heart 1	9.3	8.7	9.8
Heart 2	9.8	19.9	16.5
Heart 3	9.7	9.0	4.2
Heart 4	6.1	14.5	35.7
Mean $\pm$ SD	8.7 $\pm$ 1.8	13.0 $\pm$ 5.3	16.6 $\pm$ 13.7

Table 2: Opening angle experimental data. All values are reported in degrees.

1 Table 2 summarizes the opening angles of the basal, equatorial, and apical  
2 slices of all four hearts. Average opening angles increase from base to apex (from  
3  $8.7^\circ$  to  $16.6^\circ$ ) with an increasing standard deviation (from  $\pm 1.8^\circ$  to  $\pm 13.7^\circ$ ). The  
4 variability in opening angle may be attributed to a combination of geometric  
5 and structural differences between the two control slices, and the location of  
6 the radial cut. Nevertheless, opening angles are significantly lower than values  
7 found for rat hearts ( $45^\circ$ ) (Omens and Fung, 1990), hence potentially revealing  
8 a size-effect in residual stress development.

### 9 *3.2. Generating growth-induced prestrain*

10 Figure 4 illustrates our protocol to generate prestrain through heterogeneous  
11 growth in a patient specific left ventricular geometry (Genet, Lee, et al., 2014).  
12 For the sake of illustration, we used a nominal ventricular pressure  $\bar{P}$  of 1 mmHg,  
13 and a nominal growth duration  $\bar{t}$  of one growth time constant  $\tau$ . During the  
14 strain-driven growth step, the myofiber stress field becomes more and more  
15 homogeneous. While homogeneous isotropic growth does not generate residual  
16 stress, homogeneous anisotropic growth (Rausch, Dam, et al., 2011; Kerckhoffs,  
17 2012) and heterogeneous isotropic growth (Göktepe, Abilez and Kuhl, 2010;  
18 Göktepe, Abilez, et al., 2010) do. Thus, the final configuration is residually  
19 stressed: the sub-endocardial region is in compression, the sub-epicardial region  
20 in in tension.

21 This is in contrast to some models in the literature (Kroon, Delhaas, et al.,  
22 2007, 2009), which hypothesize that the growth-induced residual stresses are  
23 relieved over time, such that the grown configuration is always assumed to be  
24 stress free. Our opening angle experiment indicates though that the inner layer  
25 of the ventricle, similar to arteries, is in compression and the outer layer is in  
26 tension. This result is compatible with strain-driven growth-induced prestrain,  
27 the underlying hypothesis in this paper.

28 We have used the trace of the elastic Green-Lagrange strain tensor as the  
29 thermodynamical force to drive growth. Other authors have used the fiber  
30 stretch (Lee, Genet, et al., 2014a); however, the fiber stretch is largest in the

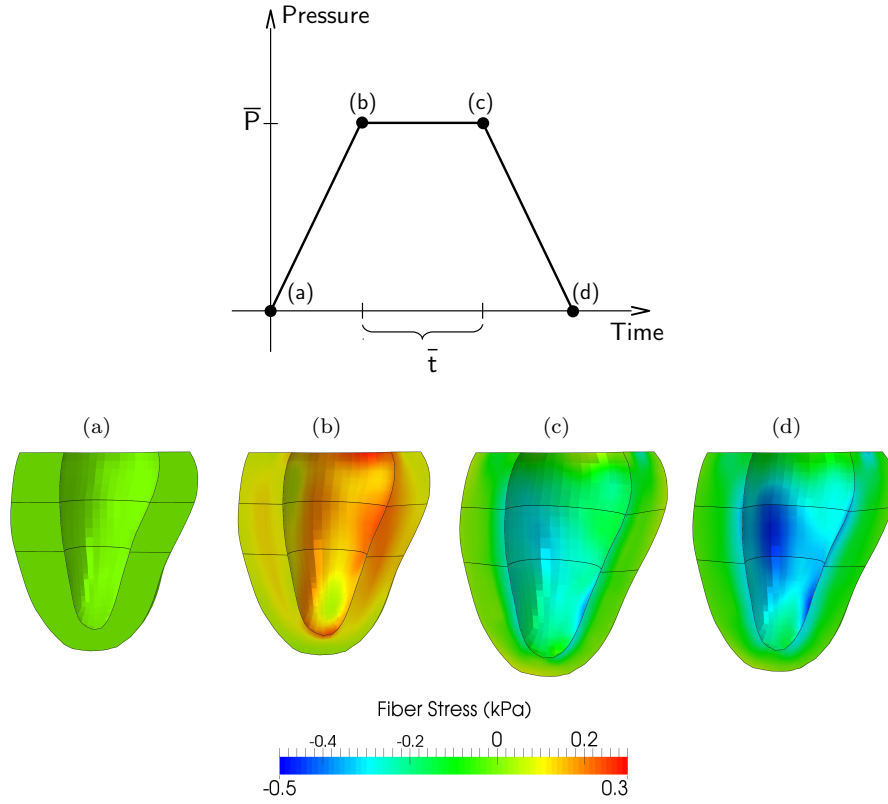


Figure 4: Protocol to generate heterogeneous growth-induced residual stress in a patient specific left ventricular geometry. The ventricle is loaded to a ventricular pressure of  $\bar{P}$ , (a)-(b), then allowed to grow for a duration  $\bar{t}$ , (b)-(c), and then unloaded, (c)-(d). The strain-driven growth drives the growing configuration into a state with a more homogeneous myofiber stress and reduces regional stress variations (c). The final configuration is unloaded, but not stress free, with the sub-endocardial region in compression, and the sub-epicardial region in tension (d).

1 mid-wall and not in the sub-endocardial region (Choi, D’hooge, et al., 2010;  
 2 Lee, Genet, et al., 2014a), and the associated residual stress fields are not phys-  
 3 iological. Others have use the Kirchhoff (Klepach, Lee, et al., 2012) or Mandel  
 4 (Göktepe, Abilez and Kuhl, 2010; Göktepe, Abilez, et al., 2010) stresses, which  
 5 are more “isotropic” quantities. Actually, in the case of isotropic growth and  
 6 compressible elasticity, the Mandel stress is the energy conjugate of the growth  
 7 state variable; however, in the case of quasi-incompressible elasticity considered  
 8 here, the energy conjugate of the isotropic growth state variable is basically  
 9 the isostatic pressure, which does not seem to be a reasonable driving force.  
 10 In other words, the distribution of residual stresses constrains the functional  
 11 form of the growth law. This is why, after systematically testing a collection  
 12 of other driving forces for growth, we decided to select the trace of the elastic  
 13 deformation.

14 As for growth kinetic equation itself, for the lack of appropriate experiments,  
 15 we use a simple linear evolution law. More complex evolution laws have been  
 16 proposed, including thresholds and limiting values (Kuhl, 2014), and even mul-  
 17 tiple domains (Lee, Genet, et al., 2014a) to predict both growth and reverse  
 18 growth. The growth law we have selected here is the simplest law to predict  
 19 heterogeneous growth.

### 20 3.3. Growth-induced prestrain in patient-specific left ventricle

21 Figure 5 illustrates the fixed-point iteration method to solve for the reference  
 22 configuration associated with a given amount of prestrain, once again generated  
 23 with a nominal ventricular pressure of 1 mmHg and a nominal growth duration  
 24 of one growth time constant. For each iteration (*i.e.*, each column), we show  
 25 the reference stress-free configuration (top row) and the final (after loading,  
 26 growth, and unloading) configuration (bottom row). During the fixed-point  
 27 iterations, we compute the error between the reference configuration (obtained  
 28 from medical imaging) and the deformed configuration (after loading-growth-  
 29 unloading). The very last geometry (last column, bottom row) is identical to the  
 30 very first (first column, top row; this geometry is the *in vivo* unloaded geometry

1 extracted from medical imaging), but it contains heterogeneous growth-induced  
2 residual stress.

3 Figure 6 shows, for multiple growth durations ranging from 1 to 6 growth  
4 time constants, the reference configuration computed using the fixed-point iter-  
5 ation method (top row) as well as the prestrained configuration. The reference  
6 configuration is always stress-free, but the geometry varies. On the contrary,  
7 the prestrained configuration has always the same geometry (the one extracted  
8 from medical imaging data), but different levels of residual stress.

9 By assuming that the early-diastolic ventricular geometry extracted from  
10 medical imaging is unloaded, we implicitly neglected the ventricular pressure at  
11 the beginning of diastole. However, this hypothesis is not necessary for using  
12 the fixed-point iterations. In principle, it is possible to prescribe any loading at  
13 the end of the forward step of the inverse problem, thus taking into account the  
14 mechanical load applied to the tissues.

### 15 3.4. *Virtual opening angle experiment*

16 After generating residual stresses in the subject-specific left ventricular ge-  
17 ometry, we slice the virtual heart longitudinally and then cut it open. The result  
18 is illustrated in Figure 7, for a nominal ventricular pressure of 1 mmHg, and  
19 a nominal growth duration of six growth time constants. During this virtual  
20 opening angle experiment, the apical and basal parts of the mesh are fixed, and  
21 only the slice is allowed to deform. To reproduce the experimental conditions,  
22 the nodes belonging to the upper and lower faces can only move in the sliding  
23 plane. To remove rigid body motions, the nodes of one face of the cut can only  
24 move in the cutting plane.

25 Figure 8 shows the relationship between the maximum principal residual  
26 strain in the slice and the opening angle. Different levels of residual strain are  
27 generated using different growth durations, ranging from 1 to 6 growth time  
28 constants, while a 1 mmHg ventricular pressure is always used. The black line  
29 and the gray box mark the average and standard deviation from the physical  
30 opening angle experiment on the mid-level slice in Section 3.1. The graph

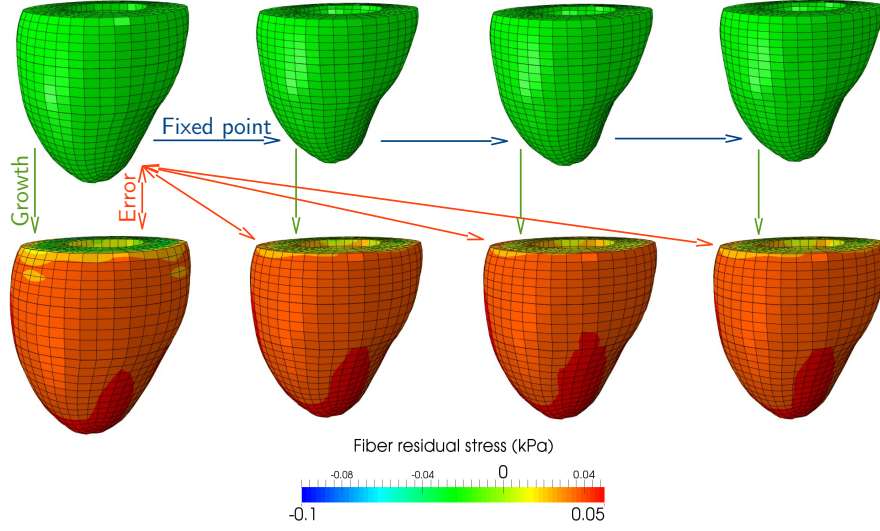


Figure 5: Fixed-point iteration method to compute the prestrained, mechanically unloaded reference configuration (last column, top row) so that the prestrained, mechanically loaded configuration (last column, bottom row) matches the *in vivo* geometry extracted from magnetic resonance images (first column, top row) but contains auto-balanced residual stresses. Colors represent residual fiber stress, in kPa.

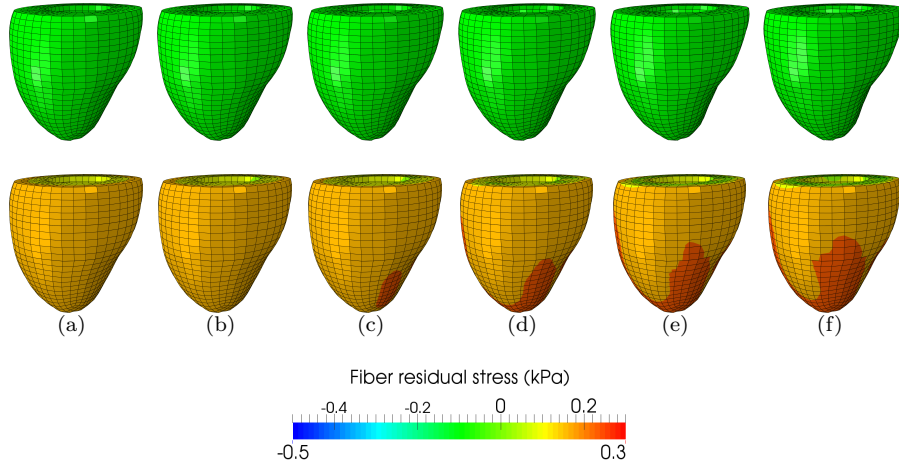


Figure 6: Prestrained configurations for varying prestrain levels. Prestrain is generated by heterogeneous growth. The reference configurations are computed using a fixed-point iteration, so that the prestrained configurations (bottom row) match the *in vivo* geometry extracted from magnetic resonance images (top row). Colors represent residual fiber stress, in kPa.

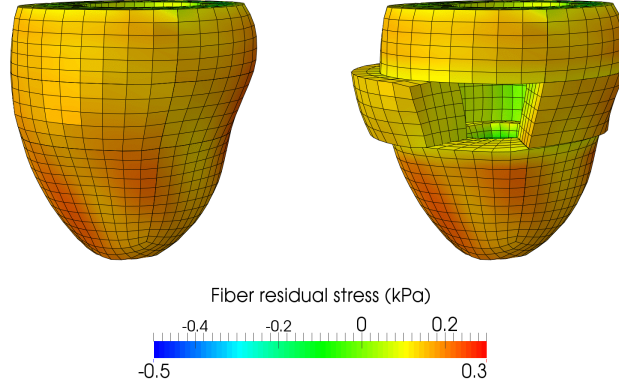


Figure 7: Virtual opening angle experiment. The prestrained configuration is sliced and then cut. The slice naturally springs open, similar to the physical experiment illustrated in Figure 3. Cutting the slice relieves some, but not all residual stress. Colors represent residual fiber stress, in kPa.

1 confirms that the proposed method is capable of reproducing physiologically  
 2 realistic opening angle ranges.

3 It is not necessary to shrink the ventricle to an infinitesimally small size  
 4 to then induce enough residual stress through growth to generate a realistic  
 5 opening angle. This means that part of the residual stress induced by growth  
 6 during organogenesis is released, as hypothesized in (Kroon, Delhaas, et al.,  
 7 2007, 2009). Our proposed method thus allows us to distinguish between the  
 8 residual stress that is released, and the residual stress that remains within the  
 9 tissues. Moreover, the fact that some of the residual stress is released justifies  
 10 the original assumption that there exists a stress-free compatible configuration,  
 11 which is described in Figure 2, and computed using the fixed-point algorithm  
 12 described Section 2.4.

### 13 3.5. Influence of the prestrain on the ventricular mechanical response

14 An important consequence of prestrain is the influence of the residual stress  
 15 on the mechanical response of the heart. Figure 9 shows the passive pressure-  
 16 volume relationship for different levels of prestrain associated with different  
 17 opening angles. Once again, the different levels of prestrain are generated us-

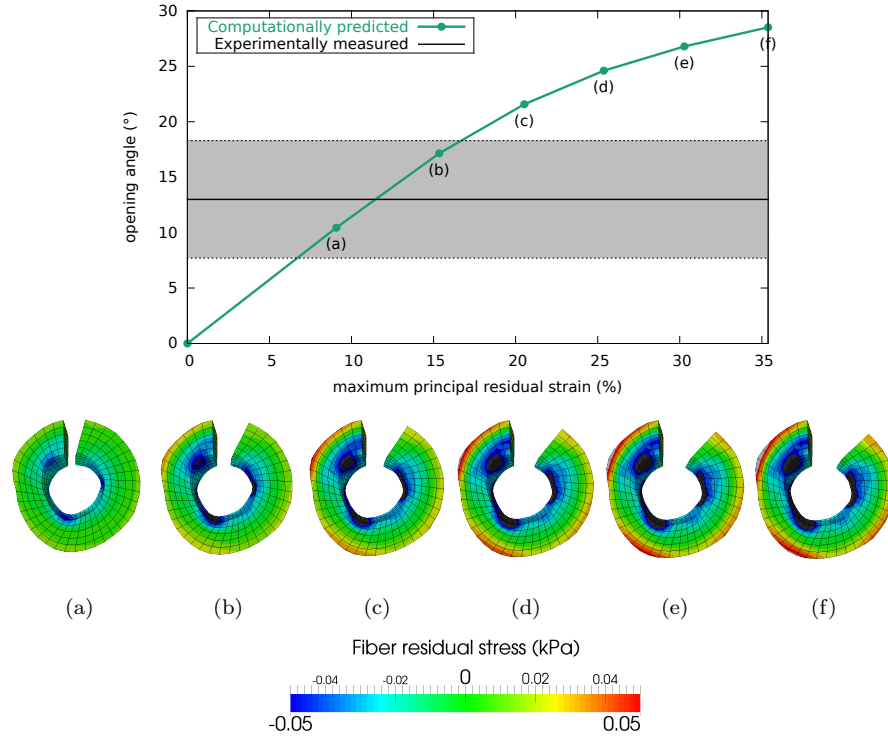


Figure 8: Opening angles for varying prestrain levels. The green curve summarizes the computationally simulated opening angles for a pressure of  $\bar{P} = 1$  mmHg. The black line and gray box mark the experimentally measured opening angle of  $13 \pm 5.3^\circ$  for the equatorial slice. Computationally simulated opening angles lie within the range of experimentally measured opening angles.



1 ing different growth durations, here ranging from 1 to 6 growth time constants,  
 2 and the ventricular pressure during growth is kept constant at 1 mmHg. Be-  
 3 cause of the nature of residual stresses in growing circular cross sections, with  
 4 compressive stresses at the sub-endocardial region and tensile stresses at the  
 5 sub-epicardial region, prestrain tends to make the ventricle more compliant.  
 6 For instance, for a maximal principal prestrain of 15.34%, a fiber residual stress  
 7 varying from  $-0.12\text{kPa}$  to  $+0.055\text{kPa}$ , and an opening angle of  $17.1^\circ$ , *i.e.*, close  
 8 to the average experimental value, the ventricular pressure after a passive filling  
 9 corresponding to an unloaded ventricular volume (*i.e.*, a 50% ejection fraction)  
 10 is reduced by 25.8% compared to the prestrain-free ventricle. As a consequence  
 11 of this increased compliance, the ventricle requires less energy to fill. In other  
 12 words, besides the well-known effect of homogenizing the ventricular wall stress  
 13 (Omens and Fung, 1990), residual stresses could be a mechanism to directly  
 14 improve ventricular diastolic function.

#### 15 4. Summary and Perspectives

16 In this paper, we investigated the hypothesis that residual stress in the beat-  
 17 ing heart is induced by growth of the organ. We used the finite growth frame-  
 18 work, together with a fixed-point iteration on the geometry itself, to introduce  
 19 residual stress in a subject-specific left ventricular geometry. We showed that  
 20 the residual stress fields induced by heterogeneous growth are compatible with  
 21 experimental results, both qualitatively and quantitatively. Indeed, our method  
 22 can reproduce the classical opening angle experiment, by (Chuong and Fung,  
 23 1986; Omens and Fung, 1990). It can successfully predict the physiological  
 24 range of opening angles. We showed that the prestrain can have a significant  
 25 impact on the passive mechanical response of the ventricle, making it much  
 26 more compliant.

27 The present study could be complemented at multiple levels. For instance,  
 28 different growth kinematics such as longitudinal and transverse growth (Göktepe,  
 29 Abilez and Kuhl, 2010; Göktepe, Abilez, et al., 2010), could be compared in

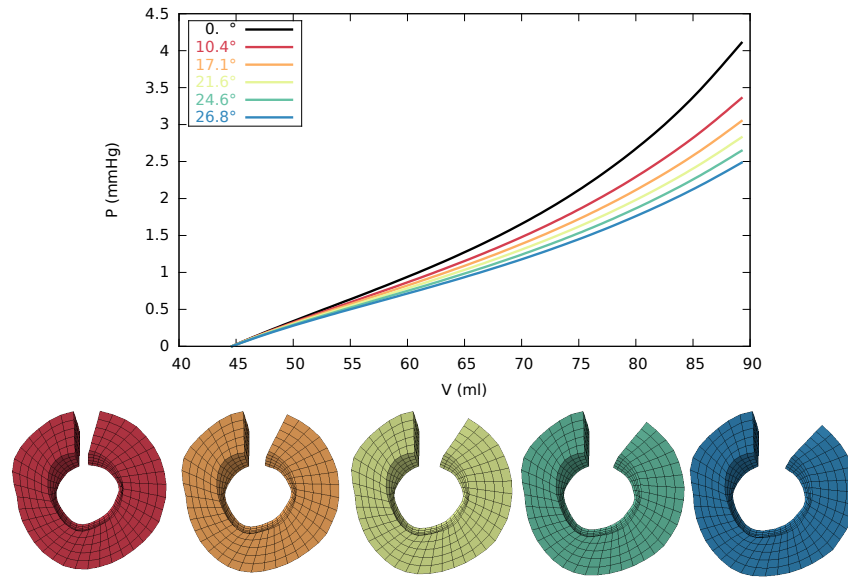


Figure 9: Passive pressure-volume response of the left ventricle for varying prestrain levels. Increasing the prestrain level increases the ventricular compliance: for an opening angle of  $17.1^\circ$ , *i.e.*, close to the average experimental value, the ventricular pressure after passive filling corresponding to a 50% ejection fraction is reduced by 25.8% compared to the prestrain-free case. This shows that residual stresses could be a mechanism to directly improve ventricular diastolic function.

1 terms of the opening angle they generate. Moreover, it would be interesting to  
 2 explore regional variations along the longitudinal axis and compare prestrain  
 3 in different slices. Furthermore, we plan to quantify the out-of-plane displace-  
 4 ment, both experimentally and computationally, to provide additional informa-  
 5 tion about the local residual stress field and the degree of anisotropy. Finally,  
 6 we could use a fully convex elastic strain energy potential (Holzapfel and Ogden,  
 7 2009), making our framework thermodynamically consistent.

8 Some more general perspectives follow from this work. First, in addition  
 9 to studying the influence of the prestrain on the passive ventricular response  
 10 alone, we will characterize the sensitivity of the active response, and, eventu-  
 11 ally, of the entire pressure-volume relationship, for different prestrain levels.  
 12 Another important follow up study will be to incorporate the algorithm in-  
 13 troduced here within a personalized left ventricular model (Genet, Lee, et al.,  
 14 2014), and compute personalized passive and active cardiac mechanical prop-  
 15 erties by taking into account physiological prestrain levels. Finally, we will  
 16 study the interactions between physiological residual stress and residual stress  
 17 induced by the injection of biomaterials in diseased myocardium as a potential  
 18 treatments (Lee, Wall, et al., 2013, 2014), and their respective influence on ven-  
 19 tricular mechanics. We believe that prestrain could be the key to explain various  
 20 discrepancies in the literature between *in vivo* and *ex vivo* measurements and  
 21 computational simulations. Including the effects of prestrain have the potential  
 22 to make subject-specific modeling more reliable and more applicable to today’s  
 23 cardiac health problems.

## 24 **Funding**

25 This work was supported by a Marie-Curie international outgoing fellowship  
 26 within the 7th European Community Framework Program (M. Genet); NIH  
 27 grants R01-HL-077921 (J.M. Guccione), R01-HL-118627 (J.M. Guccione and  
 28 G.S. Kassab) and U01-HL-119578 (G.S. Kassab, J.M. Guccione, E. Kuhl); NSF  
 29 grants 0952021 and 1233054 (E. Kuhl).

1 **Conflict of interest**

2 None.

**References**

Aitken AC. 1950. On the Iterative Solution of a System of Linear Equations. Proceedings of the Royal Society of Edinburgh Section A Mathematical and Physical Sciences. 63(01):52–60. Available from: [http://journals.cambridge.org/abstract\\_S008045410000697X](http://journals.cambridge.org/abstract_S008045410000697X).

Ambrosi D, Ateshian GA, Arruda EM, Cowin SC, Dumais J, Goriely A, Holzapfel GA, Humphrey JD, Kemkemer R, Kuhl E, et al. 2011. Perspectives on biological growth and remodeling. Journal of the mechanics and physics of solids. 59(4):863–883.

Auricchio F, Beirão da Veiga L, Lovadina C, Reali A, Taylor RL, Wriggers P. 2013. Approximation of incompressible large deformation elastic problems: some unresolved issues. Computational Mechanics. 52(5):1153–1167. Available from: <http://link.springer.com/10.1007/s00466-013-0869-0>.

Cardon AD, Bailey MR, Bennett BT. 2012. The Animal Welfare Act: from enactment to enforcement. Journal of the American Association for Laboratory Animal Science. 51:301–5. Available from: <http://www.pubmedcentral.nih.gov/articlerender.fcgi?artid=3358977&tool=pmcentrez&rendertype=abstract>.

Choi HF, D’hooge J, Rademakers FE, Claus P. 2010. Influence of left-ventricular shape on passive filling properties and end-diastolic fiber stress and strain. Journal of biomechanics. 43(9):1745–53. Available from: <http://www.ncbi.nlm.nih.gov/pubmed/20227697>.

Chuong CJ, Fung YC. 1986. Residual stress in arteries. In: Schmid-Schönbein GW, Woo SLY, Zweifach BW, editors. Frontiers in biomechanics. New York, NY: Springer New York.

- Costa KD, May-Newman K, Farr D, O'Dell WG, McCulloch AD, Omens JH. 1997. Three-dimensional residual strain in midanterior canine left ventricle. *The American journal of physiology*. 273:H1968–H1976.
- Deguchi S, Ohashi T, Sato M. 2006. Tensile properties of single stress fibers isolated from cultured vascular smooth muscle cells. *Journal of biomechanics*. 39(14):2603–10. Available from: <http://www.jbiomech.com/article/S002192900500401X/fulltext>.
- Fagiano C, Genet M, Baranger E, Ladevèze P. 2014. Computational geometrical and mechanical modeling of woven ceramic composites at the mesoscale. *Composite Structures*. 112:146–156.
- François M. 1995. Identification des symetries materielles de materiaux anisotropes [dissertation]. Université Pierre et Marie Curie, Paris VI.
- Frey N, Olson EN. 2003. Cardiac hypertrophy: the good, the bad, and the ugly. *Annual review of physiology*. 65:45–79. Available from: <http://www.ncbi.nlm.nih.gov/pubmed/12524460>.
- Fung YC. 1993. *Biomechanics: Mechanical properties of living tissues*. Springer.
- Genet M. 2010. Toward a virtual material for ceramic composites (in French) Phd thesis. ENS-Cachan.
- Genet M, Lee LC, Nguyen R, Haraldsson H, Acevedo-Bolton G, Zhang Z, Ge L, Ordovas K, Kozerke S, Guccione JM. 2014. Distribution of normal human left ventricular myofiber stress at end-diastole and end-systole—a target for in silico studies of cardiac procedures. *Journal of Applied Physiology*. 117:142–52.
- Genet M, Marcin L, Ladevèze P. 2013. On structural computations until fracture based on an anisotropic and unilateral damage theory. *International Journal of Damage Mechanics*.

- Göktepe S, Abilez OJ, Kuhl E. 2010. A generic approach towards finite growth with examples of athlete’s heart, cardiac dilation, and cardiac wall thickening. *Journal of the Mechanics and Physics of Solids*. 58(10):1661–1680.
- Göktepe S, Abilez OJ, Parker KK, Kuhl E. 2010. A multiscale model for eccentric and concentric cardiac growth through sarcomerogenesis. *Journal of Theoretical Biology*. 265(3):433–42.
- Govindjee S, Mihalic PA. 1996. Computational methods for inverse finite elastostatics. *Computer Methods in Applied Mechanics and Engineering*. 136(1-2):47–57. Available from: <http://linkinghub.elsevier.com/retrieve/pii/0045782596010456>.
- Govindjee S, Mihalic PA. 1998. Computational methods for inverse deformations in quasi-incompressible finite elasticity. *International Journal for Numerical Methods in Engineering*. 43(5):821–838.
- Greenwald SE, Moore JE, Rachev A, Kane TPC, Meister JJ. 1997. Experimental Investigation of the Distribution of Residual Strains in the Artery Wall. *Journal of Biomechanical Engineering*. 119(4):438. Available from: <http://biomechanical.asmedigitalcollection.asme.org/article.aspx?articleid=1400949>.
- Guccione JM, McCulloch AD, Waldman LK. 1991. Passive material properties of intact ventricular myocardium determined from a cylindrical model. *Journal of Biomechanical Engineering*. 113(1):42–55.
- Guo X, Lanir Y, Kassab GS. 2007. Effect of osmolarity on the zero-stress state and mechanical properties of aorta. *American journal of physiology: Heart and circulatory physiology*. 293:H2328–H2334.
- Han HC, Fung YC. 1996. Direct measurement of transverse residual strains in aorta. *The American Journal of Physiology*. 270:H750–H759.
- Harmer J, Pushparajah K, Toussaint N, Stoeck CT, Chan R, Atkinson D, Razavi R, Kozerke S. 2013. In vivo myofibre architecture

- in the systemic right ventricle. *European heart journal*. 34(47):3640. Available from: <http://eurheartj.oxfordjournals.org/content/34/47/3640.short><http://www.ncbi.nlm.nih.gov/pubmed/24142348>.
- Hild F. 1998. Damage, Failure and Scale Bridging in Heterogeneous Materials (in French) Habilitation thesis. Pierre and Marie Curie University—Paris 6.
- Holzapfel GA. 2000. *Nonlinear Solid Mechanics: A Continuum Approach for Engineering*. Wiley.
- Holzapfel GA, Gasser TC, Ogden RW. 2000. A new constitutive framework for arterial wall mechanics and a comparative study of material models. *Journal of Elasticity*. 61:1–48.
- Holzapfel GA, Ogden RW. 2009. Constitutive modelling of passive myocardium: a structurally based framework for material characterization. *Philosophical transactions of the Royal Society A: Mathenatical, Physical & Engineering Sciences*. 367(1902):3445–75. Available from: <http://www.ncbi.nlm.nih.gov/pubmed/19657007>.
- Humphrey JD. 2002. *Cardiovascular Solid Mechanics: Cells, Tissues, and Organs*. Springer-Verlag.
- Kerckhoffs RCP. 2012. Computational modeling of cardiac growth in the post-natal rat with a strain-based growth law. *Journal of Biomechanics*. 45(5):865–71. Available from: <http://www.pubmedcentral.nih.gov/articlerender.fcgi?artid=3294007&tool=pmcentrez&rendertype=abstract>.
- Klepach D, Lee LC, Wenk JF, Ratcliffe MB, Zohdi TI, Navia JA, Kassab GS, Kuhl E, Guccione JM. 2012. Growth and remodeling of the left ventricle: A case study of myocardial infarction and surgical ventricular restoration. *Mechanics Research Communications*. 42:134–141.
- Krishnamurthy A, Villongco CT, Chuang J, Frank LR, Nigam V, Belezzuoli E, Stark P, Krummen DE, Narayan SM, Omens JH, et al. 2013. Patient-Specific

- Models of Cardiac Biomechanics. *Journal of computational physics*. 244:4–21. Available from: <http://www.pubmedcentral.nih.gov/articlerender.fcgi?artid=3667962&tool=pmcentrez&rendertype=abstract>.
- Kroon W, Delhaas T, Arts T, Bovendeerd PHM. 2007. Constitutive Modeling of Cardiac Tissue Growth. In: FIMH 2007. p. 340–349.
- Kroon W, Delhaas T, Arts T, Bovendeerd PHM. 2009. Computational modeling of volumetric soft tissue growth: Application to the cardiac left ventricle. *Biomechanics and Modeling in Mechanobiology*. 8:301–309.
- Kuhl E. 2014. Growing matter: A review of growth in living systems. *Journal of the Mechanical Behavior of Biomedical Materials*. 29:529–543.
- Kumar S, Maxwell IZ, Heisterkamp A, Polte TR, Lele TP, Salanga M, Mazur E, Ingber DE. 2006. Viscoelastic retraction of single living stress fibers and its impact on cell shape, cytoskeletal organization, and extracellular matrix mechanics. *Biophysical Journal*. 90(10):3762–73. Available from: <http://www.pubmedcentral.nih.gov/articlerender.fcgi?artid=1440757&tool=pmcentrez&rendertype=abstract>.
- Leclerc H. 2010. Towards a no compromise approach between modularity, versatility and execution speed for computational mechanics on CPUs and GPUs. In: Allix O, Wriggers P, editors. IV European Conference on Computational Mechanics (ECCM2010). Paris, France.
- Lee LC, Genet M, Acevedo-Bolton G, Ordovas K, Guccione JM, Kuhl E. 2014a. A Computational Model that Predicts Reverse Growth in Response to Mechanical Unloading. *Biomechanics and Modeling in Mechanobiology*.
- Lee LC, Genet M, Dang AB, Ge L, Guccione JM, Ratcliffe MB. 2014b. Applications of computational modeling in cardiac surgery. *Journal of Cardiac Surgery*. 29(3):293–302.



- Lee LC, Wall ST, Genet M, Hinson A, Guccione JM. 2014. Bioinjection treatment: Effects of post-injection residual stress on left ventricular wall stress. *Journal of Biomechanics*. 47(12):3115–9.
- Lee LC, Wall ST, Klepach D, Ge L, Zhang Z, Lee RJ, Hinson A, Gorman JH, Gorman RC, Guccione JM. 2013. Algisyl-LVR™ with coronary artery bypass grafting reduces left ventricular wall stress and improves function in the failing human heart. *International Journal of Cardiology*:1–7.
- Lee LC, Wenk JF, Klepach D, Zhang Z, Saloner DA, Wallace AW, Ge L, Ratcliffe MB, Guccione JM. 2011. A novel method for quantifying in-vivo regional left ventricular myocardial contractility in the border zone of a myocardial infarction. *Journal of Biomechanical Engineering*. 133(9):094506.
- Lin DH, Yin FC. 1998. A multiaxial constitutive law for mammalian left ventricular myocardium in steady-state barium contracture or tetanus. *Journal of biomechanical engineering*. 120:504–517.
- Liu SQ, Fung YC. 1989. Relationship between hypertension, hypertrophy, and opening angle of zero-stress state of arteries following aortic constriction. *Journal of Biomechanical Engineering*. 111:325–335.
- Maillet M, van Berlo JH, Molkentin JD. 2013. Molecular basis of physiological heart growth: fundamental concepts and new players. *Nature reviews Molecular cell biology*. 14(1):38–48. Available from: <http://www.ncbi.nlm.nih.gov/pubmed/23258295>.
- Marchesseau S, Delingette H, Sermesant M, Cabrera-Lozoya R, Tobon-Gomez C, Moireau P, Figueras i Ventura RM, Lekadir K, Hernandez A, Garreau M, et al. 2013. Personalization of a cardiac electromechanical model using reduced order unscented Kalman filtering from regional volumes. *Medical image analysis*. 17(7):816–29. Available from: <http://www.sciencedirect.com/science/article/pii/S1361841513000650><http://hal.inria.fr/hal-00819806><http://www.ncbi.nlm.nih.gov/pubmed/23707227>.

- Mehrabadi M, Cowin SC. 1990. Eigentensors of linear anisotropic elastic materials. *The Quarterly Journal of Mechanics and Applied Mathematics*. 43(1). Available from: <http://qjmam.oxfordjournals.org/content/43/1/15.short>.
- National Research Council (US) Committee for the Update of the Guide for the Care and Use of Laboratory Animals. 2011. *Guide for the Care and Use of Laboratory Animals*, 8th edition.
- Omens JH, Fung YC. 1990. Residual strain in rat left ventricle. *Circulation Research*. 66(1):37–45. Available from: <http://circres.ahajournals.org/content/66/1/37.short>.
- Pezzuto S, Ambrosi D, Quarteroni A. 2014. An orthotropic active-strain model for the myocardium mechanics and its numerical approximation. *European Journal of Mechanics - A/Solids*. Available from: <http://www.sciencedirect.com/science/article/pii/S0997753814000527>.
- Rausch MK, Dam A, Göktepe S, Abilez OJ, Kuhl E. 2011. Computational modeling of growth: systemic and pulmonary hypertension in the heart. *Biomechanics and Modeling in Mechanobiology*. 10(6):799–811.
- Rausch MK, Kuhl E. 2013. On the effect of prestrain and residual stress in thin biological membranes. *Journal of the Mechanics and Physics of Solids*.
- Rodriguez EK, Hoger A, McCulloch AD. 1994. Stress-dependent finite growth in soft elastic tissues. *Journal of Biomechanics*. 27(4):455—467.
- Rossi S, Ruiz-Baier R, Pavarino LF, Quarteroni A. 2012. Orthotropic active strain models for the numerical simulation of cardiac biomechanics. *International Journal for Numerical Methods in Biomedical Engineering*. 28(6-7):761–788. Available from: <http://doi.wiley.com/10.1002/cnm.2473>.
- Sellier M. 2011. An iterative method for the inverse elasto-static problem. *Journal of Fluids and Structures*. 27(8):1461–1470.

- Shams M, Destrade M, Ogden RW. 2011. Initial stresses in elastic solids: Constitutive laws and acoustoelasticity. *Wave Motion*. 48:552–567.
- Streeter DD, Bassett DL. 1966. An engineering analysis of myocardial fiber orientation in pig’s left ventricle in systole. *The Anatomical Record*. 155(4):503–511.
- Streeter DD, Spotnitz HM, Patel DP, Ross J, Sonnenblick EH. 1969. Fiber orientation in the canine left ventricle during diastole and systole. *Circulation research*. 24(3):339–47.
- Taber LA. 1995. *Biomechanics of Growth, Remodeling, and Morphogenesis*.
- Toussaint N, Stoeck CT, Sermesant M, Schaeffter T, Kozerke S, Batchelor PG. 2013. In vivo human cardiac fibre architecture estimation using shape-based diffusion tensor processing. *Medical Image Analysis*. Available from: <http://www.ncbi.nlm.nih.gov/pubmed/23523287>.
- Vaishnav RN, Vossoughi J. 1987. Residual stress and strain in aortic segments. *Journal of biomechanics*. 20:235–239.
- Wang HM, Gao H, Luo XY, Berry C, Griffith BE, Ogden RW, Wang TJ. 2013. Structure-based finite strain modelling of the human left ventricle in diastole. *International journal for numerical methods in biomedical engineering*. 29(1):83–103. Available from: <http://www.ncbi.nlm.nih.gov/pubmed/23293070>.
- Wang HM, Luo XY, Gao H, Ogden RW, Griffith BE, Berry C, Wang TJ. 2013. A modified Holzapfel-Ogden law for a residually stressed finite strain model of the human left ventricle in diastole. *Biomechanics and modeling in mechanobiology*. Available from: <http://www.ncbi.nlm.nih.gov/pubmed/23609894>.
- Webster KD, Ng WP, Fletcher DA. 2014. Tensional homeostasis in single fibroblasts. *Biophysical Journal*. 107(1):146–55. Available from: <http://www.ncbi.nlm.nih.gov/pubmed/24988349>.

Xi J, Lamata P, Lee J, Moireau P, Chapelle D, Smith NP. 2011. Myocardial transversely isotropic material parameter estimation from in-silico measurements based on a reduced-order unscented Kalman filter. *Journal of the mechanical behavior of biomedical materials*. 4(7):1090–102. Available from: <http://www.ncbi.nlm.nih.gov/pubmed/21783118>.