



HAL
open science

Culicoides Midge Bites Modulate the Host Response and Impact on Bluetongue Virus Infection in Sheep

Nonito Pagès, Emmanuel Bréard, Celine Urien, Sandra Talavera, Cyril Viarouge, Cristina Lorca-Oro, Luc Jouneau, Bernard Charley, Stéphan Zientara, Albert Bensaid, et al.

► **To cite this version:**

Nonito Pagès, Emmanuel Bréard, Celine Urien, Sandra Talavera, Cyril Viarouge, et al.. Culicoides Midge Bites Modulate the Host Response and Impact on Bluetongue Virus Infection in Sheep. PLoS ONE, 2014, 9 (1), pp.1-9. 10.1371/journal.pone.0083683 . hal-01190012

HAL Id: hal-01190012

<https://hal.science/hal-01190012>

Submitted on 1 Sep 2015

HAL is a multi-disciplinary open access archive for the deposit and dissemination of scientific research documents, whether they are published or not. The documents may come from teaching and research institutions in France or abroad, or from public or private research centers.

L'archive ouverte pluridisciplinaire **HAL**, est destinée au dépôt et à la diffusion de documents scientifiques de niveau recherche, publiés ou non, émanant des établissements d'enseignement et de recherche français ou étrangers, des laboratoires publics ou privés.

Culicoides Midge Bites Modulate the Host Response and Impact on Bluetongue Virus Infection in Sheep

Nonito Pages¹, Emmanuel Bréard^{2,3}, Céline Urien^{3,3}, Sandra Talavera¹, Cyril Viarouge², Cristina Lorca-Oro¹, Luc Jouneau³, Bernard Charley³, Stéphan Zientara², Albert Bensaid¹, David Solanes¹, Joan Pujols¹, Isabelle Schwartz-Cornil^{3*}

1 Centre de Recerca en Sanitat Animal CRESA, Universitat Autònoma de Barcelona – Institut de Recerca i Tecnologia Agroalimentaries, Bellaterra, Spain, **2** Virologie, Unité Mixte de Recherche UMR1161, Agence Nationale de Sécurité Sanitaire de l'Alimentation, de l'Environnement et du Travail – Institut National de la Recherche Agronomique – Ecole Nationale Vétérinaire d'Alfort, Maisons-Alfort, France, **3** Virologie et Immunologie Moléculaires, Unité de Recherche UR892, Institut National de la Recherche Agronomique, Jouy-en-Josas, France

Abstract

Many haematophagous insects produce factors that help their blood meal and coincidentally favor pathogen transmission. However nothing is known about the ability of *Culicoides* midges to interfere with the infectivity of the viruses they transmit. Among these, Bluetongue Virus (BTV) induces a hemorrhagic fever- type disease and its recent emergence in Europe had a major economical impact. We observed that needle inoculation of BTV8 in the site of uninfected *C. nubeculosus* feeding reduced viraemia and clinical disease intensity compared to plain needle inoculation. The sheep that developed the highest local inflammatory reaction had the lowest viral load, suggesting that the inflammatory response to midge bites may participate in the individual sensitivity to BTV viraemia development. Conversely compared to needle inoculation, inoculation of BTV8 by infected *C. nubeculosus* bites promoted viraemia and clinical symptom expression, in association with delayed IFN- induced gene expression and retarded neutralizing antibody responses. The effects of uninfected and infected midge bites on BTV viraemia and on the host response indicate that BTV transmission by infected midges is the most reliable experimental method to study the physio-pathological events relevant to a natural infection and to pertinent vaccine evaluation in the target species. It also leads the way to identify the promoting viral infectivity factors of infected *Culicoides* in order to possibly develop new control strategies against BTV and other *Culicoides* transmitted viruses.

Citation: Pages N, Bréard E, Urien C, Talavera S, Viarouge C, et al. (2014) *Culicoides* Midge Bites Modulate the Host Response and Impact on Bluetongue Virus Infection in Sheep. PLoS ONE 9(1): e83683. doi:10.1371/journal.pone.0083683

Editor: Bradley S. Schneider, Metabiota, United States of America

Received: July 24, 2013; **Accepted:** November 6, 2013; **Published:** January 8, 2014

Copyright: © 2014 Pages et al. This is an open-access article distributed under the terms of the Creative Commons Attribution License, which permits unrestricted use, distribution, and reproduction in any medium, provided the original author and source are credited.

Funding: The research leading to these results has received funding from the European Community's Seventh Framework Programme (FP7, 2007–2013), Research Infrastructures action, under the grant agreement No. FP7-228394 (NADIR project). The funders had no role in study design, data collection and analysis, decision to publish, or preparation of the manuscript.

Competing Interests: The authors have declared that no competing interests exist.

* E-mail: isabelle.schwartz@jouy.inra.fr

† These authors contributed equally to this work.

Introduction

Several biting midges of the *Culicoides* genus (Diptera: Ceratopogonidae), that are among the smallest haematophagous insects, are transmission vectors of viruses affecting human and animals, such as the Oropouche virus in human [1], the African Horse Sickness and Equine Encephalosis viruses [2], the zoonotic human/swine Vesicular Stomatitis Virus [3] and three ruminant viruses with the Bluetongue virus [4], the Epizootic Haemorrhagic Disease virus [2] and the Schmallenberg virus [5]. Bluetongue virus (BTV) - the most studied virus transmitted by *Culicoides* midges so far - belongs to the *Orbivirus* genus of the *Reoviridae* family, and includes 26 serotypes [6] determined by the outer capsid VP2 and, to a lesser extent VP5 proteins [4]. Several BTV serotypes, mainly BTV8 and 1, have been recently introduced in Europe where they caused major economical damages in the cattle and sheep industry with loss of production and mortality and trade restrictions [4]. The clinical manifestations of Bluetongue (BT) can include fever, salivation, hyperaemia/oedema, mucosae ulcerations, and abortion [4]. BTV is transmitted by many *Culicoides*

species, with dominant species that vary in different parts of the world, such as *C. imicola* in Africa, *C. sonorensis* in North America, *C. brevitarsis* in Australia and *Culicoides* of the so called Obsoletus group in Northern Europe [7].

Blood sucking arthropods are often more than just delivery systems for the pathogens they carry. Indeed the arthropod bite triggers vasoconstriction, the immediate onset of acute inflammation and of innate immune responses that may interfere on the pathogen transmission. The saliva of haematophagous arthropods contains a cocktail of pharmacologic proteins that modulate vascular constriction, blood coagulation, inflammation and immunity [8]. These compounds, mainly studied in the cases of ticks, sand flies, and mosquitoes, contribute to the success of the blood meal and can also promote pathogen infectivity [8]. Regarding mosquito- transmitted viral infections, West Nile Virus infection in mice was enhanced by co-administration of mosquito saliva [9]; West Nile Virus [10] or Cache-Valley Virus [11] infections were exacerbated when the viruses were inoculated in the skin area subsequently to the feeding of mosquitoes in mice. However no effect of mosquito bite was observed in the case of

Saint Louis Encephalitis Virus and Western Equine Encephalitis Virus transmission in chicken [12]. Thus the effect of insect bites on infection may depend on the pathogen, on the insect type, and possibly on the vertebrate species.

Culicoides are “pool” feeders: they lacerate the skin to feed on the effusion into this injury, which includes blood, skin cells and lymph. Nothing is known about the effect of *Culicoides* bite on viral transmission, an information of importance for the development of control strategies. *Culicoides* secrete molecules such as vasodilator [13], anticoagulant [14] and saliva components that are able to inhibit mouse lymphocyte response and nitric oxide production by macrophages [3]. The *Culicoides* bite provokes the recruitment of inflammatory cells that might be targets for viruses such as BTV [15]. In addition, BTV produced by insect cells *in vitro* seems more infectious for sheep than BTV produced by mammalian cells [16]. However, *Culicoides* saliva cleaves the BTV VP2 outer capsid protein, resulting in processed viruses that are less infectious for mammalian Baby Hamster Kidney cells compared to the native particles [17]. Thus *Culicoides* bites may positively or negatively affect BTV transmission by the secreted saliva components, the host response to the mechanical action of their mouth part in the skin and to the saliva, the viral processing by the insect cells in the salivary gland and the sub-anatomical site where the virus is inoculated. In order to evaluate whether and how *Culicoides* bites may modulate BTV transmission, we compared the extent of viraemia, clinical signs and host responses induced by 3 infection modes with a European isolate of BTV8: 1) simple intradermal needle inoculation; 2) intradermal needle inoculation in the feeding site of *C. nubeculosus* as done in the case of West Nile Virus [10] or Cache-Valley Virus [11], and 3) transmission by intra-thoracically- infected *C. nubeculosus* midges. *C. nubeculosus* was chosen as it is the only European *Culicoides* species that can be properly maintained in laboratory conditions using standardized techniques [18]. Moreover, *C. nubeculosus* supported BTV multiplication both after virus ingestion and inoculation, and infected midges were able to transmit the virus in laboratory conditions [19]. We performed the experiments in sheep, the real target of BTV, in order to evaluate the tri-partite insect/virus/vertebrate interactions in the pertinent host species. Previous studies of pathogen transmission by insects have used mice as a model system and have very rarely involved natural target species. These experiments revealed that *C. nubeculosus* bites have a dual effect on BTV viraemia and clinical BT disease, with an inhibitory effect of control bites on needle- transmission and an enhancing effect of infected bites compared to needle- transmission, associated to differentially modulated innate host responses.

Materials and Methods

Ethics statement

All experiments were performed in the BSL3 facilities of the Centre de Recerca en Sanitat Animal (CRESA, Spain) under the guidelines of the European Community (86/609) and were approved by the Committee on the Ethics of Animal Experiments of *Universitat Autònoma de Barcelona* (UAB) # 1425 and Animal Experimentation Commission of DAAM # 6330. Specifically, sheep were housed under temperature, humidity and light control with 4 stages trying to simulate the day light of the farms. Food, water and block of minerals were provided *ad libitum*. In the current experiment, symptoms were mild (<8 on a scale of 21), thus none of the animals required pain relief. Moreover, handling of animals was performed by experienced accredited workers, avoiding undue supplemental stress. Animals were euthanized with an overdose of sodium thiopental injected intravenously.

Virus

The baby hamster kidney (BHK21) cell line used for virus growth and titration was grown in MEM supplemented with 5% FBS, 1% pyruvate, 1% non essential amino acids, and penicillin/streptomycin (= culture medium). The wild-type field BTV8 strain was from the National Reference Laboratory collection (ANSES, Maisons-Alfort, France); it has been isolated from sheep blood in France in Ardennes in 2006, cultured on embryonated chicken eggs and then passaged only 3 times in BHK21 cells. To prepare BTV stocks, confluent BHK21 cell layers were infected and incubated at 37°C in 5% CO₂ until the appearance of cytopathic effects (3 to 4 days post infection). Culture supernatants were collected and stored at -80°C. Fifty percent tissue culture infective doses (TCID₅₀) were estimated by endpoint titration on BHK21 cells (method of Spearman-Kärber) by using a previously described protocol [20]. The inoculation stock used in this study titrated 7.5×10⁶ TCID₅₀/ml that represented 4.57×10¹¹ BTV RNA copies/ml.

BTV inoculation to midges and biting chambers

BTV8 (0.5–1 µl viral stock, 7.5×10³ TCID₅₀) was inoculated intra-thoracically to *C. nubeculosus* females. Briefly, 2 or 3 day old females were slightly anesthetized using CO₂ under a dissecting microscope. Using a glass microneedle and a manual micro-injector, females were intra-thoracically inoculated with BTV8 inoculum through the suture between the epimeron and episterum with a volume that forces the cerci to slightly extend the tip of their wings (0.5–1 µl). Inoculated midges (n = 356 females) were sorted in 16 groups of 15–25 midges inside primary containers and maintained for an extrinsic incubation period of 6–7 days at 24±2°C, 75%RH, photoperiod 14 : 10 (light : dark) and feed *ad libitum* with 5% sucrose. To increase the number of blood engorged individuals while feeding on sheep in the pre-sensitization procedure, midges were starved for a period of 24 h and then fed on sheep. RNA was extracted from *Culicoides* right after the intra-thoracic inoculation (4 midges) and in the pools of midges after gorging on sheep and tested for content in BTV8 RNA copies (Table S1). The infectivity for mammalian cells of the *C. nubeculosus*- recovered BTV was confirmed on BHK-21 cells. However we could not get reproducible infectivity titers, possibly related to *Culicoides*- derived compounds interfering on BHK-21 receptivity.

Sheep and experimental infection

Thirty two 6 month old Lacaune female sheep that had been checked to be BTV free and BTV seronegative were bought from Gregori Farm, Vilamajor d’Ager, Lleida (Spain). They had been treated with Deltamethrin insecticide (Butox 7,5%; Intervet Schering-Plough AH) every four weeks from February to May and kept in protected area to avoid exposure to environmental midges. After a week acclimation in the CRESA BSL3 facilities (Bellaterra, Spain), the sheep were randomly allocated in 5 groups (Table S2): (1) the control group (4 sheep) was intradermally inoculated with culture medium; (2) the control bite group (4 sheep, CB group) was treated by application, on the right and left inguinal areas, of *Culicoides* biting chambers with uninfected midges for 30 minutes just prior to intradermal inoculation with culture medium in the bitten zone; (3) the intradermal group (8 sheep, ID group) was infected by the intradermal route with a total of 3.75×10⁶ TCID₅₀ (2.28×10¹¹ BTV RNA copies) per sheep; (4) the CB + ID group (8 sheep) consisted of sheep treated by application of *Culicoides* biting chambers with uninfected midges for 30 minutes followed by intradermal inoculation with a total of 3.75×10⁶ TCID₅₀ BTV8 per sheep (2.28×10¹¹ BTV RNA

copies), in the feeding site of the *Culicoides*; (5) finally, the infected bite group (8 sheep, IB group) was infected by application of two *Culicoides* biting chambers for 30 minutes with intra-thoracically infected midges, simultaneously placed on the right and left inguinal areas; as discussed in the result section, the mean RNA copy numbers available in the *Culicoides* was $2.11 \pm 1.4 \times 10^{10}$ per sheep. However the exact amount of BTV delivered to each sheep was not known in this group.

In the groups that were needle- injected, the inoculum (medium or virus) was given intradermally in the inguinal zones in 10 spots (50 μ l each), with 5 spots on the right side and 5 spots on the left side. In the groups that were exposed to control or infected *Culicoides* midges, 2 biting chambers were used, one applied in the right inguinal area while the second in the left one. Biting chambers consisted on cylindrical polypropylene containers (55 mm diameter) sealed with fine mesh (1 mm wide). One of the sides was opened to introduce anesthetized *Culicoides* midges and after that immediately sealed.

Sample collection, local inflammation monitoring and clinical scoring

EDTA-blood samples were collected daily during the first 9 days post inoculation (dpi) and at day 11, 15 and 21 dpi. Serum samples were collected at 0, 5, 8 15 and 21 dpi. Body temperature was recorded daily for 16 days. Clinical signs were recorded daily. The clinical score table for the BTV8 animal trial is shown Table S3 and was established based on previous reports [16,21,22]. An integrated clinical score was calculated from the area under the curve for each sheep from 6 to 17 dpi using the Prism 5.0 software; no clinical signs were expressed before 6 dpi. The local inflammatory reaction at the inoculation point on both inguinal sides was monitored each day from 0 to 7 dpi and graded from 0 to 3 based on the intensity and area size of the local hyperaemia (score 0 to 3 per inguinal side). The integrated inflammatory reaction score per sheep was calculated from the area under the curve over the 0 to 7 dpi period.

RNA extraction

For RNA extraction of midges, midges were homogenized in 500 μ l of PBS using microbeads- containing tubes and a Ribolysor apparatus (Bio-rad, Marne-la Coquette, France). After clarification by centrifugation (2 minutes, 1000 g), RNA was extracted using the Qjamp viral RNA kit (Qiagen).

Viral RNA was extracted from 100 μ l whole blood using the Qjamp viral RNA kit. Cellular RNA was extracted from EDTA blood using Trizol-LS extraction. The extracted cellular RNA was checked for quality with an Agilent 2100 Bioanalyzer using RNA 6000 Nano Kits (Agilent Technologies).

Viral RNA detection

Viral RNA detection was performed with a commercial pan-BTV rt-RT-PCR (ADIAVET[®] BTV Real-time A352, ADIA-GENE, France) targeting the segment 10 of BTV and GAPDH as an internal control. The quantification was done using a viral dsRNA corresponding to the BTV8 segment 10; briefly, total RNA were extracted from an infected culture cell by trizol extraction and the viral dsRNA were remove from ssRNA by lithium chloride (LiCl) precipitation [23]. After migration and gel purification from a 1% agarose gel, the ds segment 10 was quantified by spectrophotometer. The number of BTV RNA copies per ml of blood was calculated at 0 to 9, 11, 15 and 21 dpi. The area under the curve over the 21 day-period was calculated

using the Prism 5.0 software. An area under the curve below 2 log₁₀ corresponded to non-viraemic sheep.

Sheep cytokine and IFN- induced gene mRNA detection

For quantitation of cytokine and IFN-induced gene expression, RNA (200 ng) was reverse transcribed using random primers and the Multiscribe reverse transcriptase (Applied Biosystem). Real-time PCR (qPCR) was carried out using 5 ng cDNA with 300 nM primers in a final reaction volume of 25 μ l of 1 \times SYBR Green PCR Master Mix (Applied Biosystem). The primers used to amplify ovine cDNA were designed with the Primer Express software (v2.0) using publically available GenBank sequences (Table S4). PCR cycling conditions were 95°C for 10 min, linked to 40 cycles of 95°C for 15 sec and 60°C for 1 min. Real-time qPCR data were collected by the Mastercycler[®] ep realplex - Eppendorf system. The expression of the different genes (arbitrary units) compared to T0 and relatively to RPS24 (ribosomal protein 24) or GAPDH was calculated by the $2^{-\Delta\Delta C_t}$ method with the Realplex software.

Serological responses to BTV

The collected sera were analyzed using a commercial BTV VP7 competitive ELISA kit (ID-VET, Montpellier, France) according to manufacturer's protocols. The development of neutralizing antibody response was assessed in BHK21 cells by serum neutralization with 50 TCID₅₀ BTV8 as described [24]. All dilutions were performed in triplicates.

Statistical analyses

The qPCR viral load, Mx1 and CXCL10 gene expressions, the temperature and clinical scores, and the antibody response measurements were analyzed for statistical differences between sheep groups using the non-parametric one-sided *Mann-Whitney U* for independent groups.

Results

Contrasted effects of uninfected and infected *C. nubeculosus* bites on induction of BTV viraemia and clinical disease

We set up our goal to evaluate the effect of uninfected and infected *Culicoides* bites on BTV infection in sheep. In order to test the effect of uninfected bites, BTV was inoculated intradermally in sheep within the feeding sites of uninfected *C. nubeculosus* (control bite + intradermal, CB + ID group), and within the skin of unbiten sheep (intradermal, ID group). The number of bites per sheep in the CB + ID group varied between 11 and 50 (data not shown). We used BTV8, the BTV serotype that spread in Europe in 2006–2008, at a dose per sheep of 3.75×10^6 TCID₅₀ corresponding to 2.28×10^{11} BTV RNA copies that is similar to conditions that previously induced viraemia and clinical symptoms in sheep [16,25]. For testing the effect of infected bites, the sheep skin was bitten by BTV8- intra-thoracically inoculated *C. nubeculosus* (between 15 and 49 bites per sheep, IB group, data not shown). The same BTV8 preparation was used to infect the sheep and the *C. nubeculosus*. Four days post intra-thoracic inoculation, the mean number of BTV8 RNA copies reached 1.2×10^9 /midge, whereas the initial quantity of BTV8 RNA copies detected after inoculation was 2.43×10^7 /midge (Table S1), indicating that viral replication occurred in *C. nubeculosus* after intra-thoracic inoculation, in the same order of magnitude as previously reported for *C. soronensis* [26]. The BTV8 RNA load in the total engorged *Culicoides* per sheep varied between 6×10^9 and

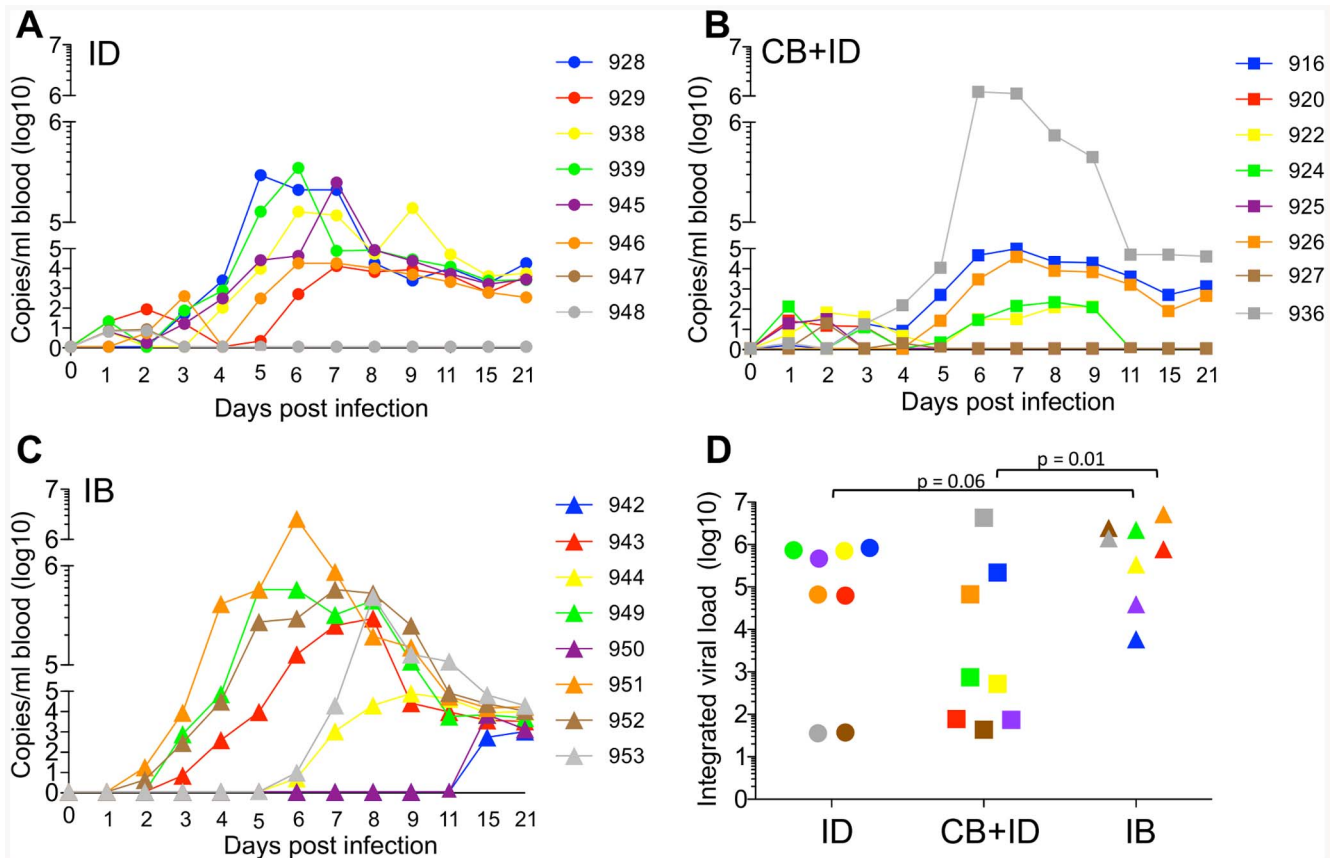


Figure 1. Measurement of viraemia in needle and *C. nubeculosus*-infected sheep. BTV viral RNA was detected in blood by qRT-PCR at 0–9, 11, 15, 21 dpi. The number of BTV copies per ml of blood is reported for each sheep with a specific color and symbol shape. The 3 infected groups are represented by a distinct symbol, i.e. a circle for the intradermal needle-inoculation group (ID, **A**), a square for the control *C. bite* + intradermal needle-inoculation group (CB + ID, **B**), and triangle for the infected *C. bite* group (IB, **C**). In **D**, the viral load over the 21-day monitoring period was integrated for each sheep using a calculation of area under the curve (color and shape symbol as in A, B, C). Statistical comparisons between 2 groups were done with a *Mann-Whitney U* test and the *p* values are reported to show significance and major tendencies. doi:10.1371/journal.pone.0083683.g001

4.95×10^{10} BTV8 RNA copies per exposed sheep (mean $2.11 \pm 1.4 \times 10^{10}$, Table S1). Therefore, the total quantity of BTV8 RNA available in the *C. nubeculosus* was about 10 times lower than in the intradermally-injected BTV8 inoculum.

The BTV8 RNA load in blood peaked between 5 and 7 dpi in the ID and CB + ID groups (Fig. 1A and B), whereas the peak time was more variable in the IB group (Fig. 1C), occurring between 6 and 15 dpi. When the BTV8 RNA load per sheep was integrated for the whole monitoring period (Fig. 1D), only 3 out of 8 sheep in the CB + ID group presented an integrated viral load above 3 log₁₀ copies/per ml, whereas 6 out of 8 sheep in the ID group did. This indicates that uninfected *C. nubeculosus* bites rather inhibited BTV viraemia onset. Conversely, despite the fact that the sheep from the IB group likely received far less BTV than the CB + ID and ID sheep, all IB sheep showed integrated viral loads above 3 log₁₀, with 4 out of 8 sheep presenting high loads that were above 6 log₁₀, a value not reached in the ID group (Fig. 1D). Furthermore the viral load values tended to be higher in the IB group compared to the ID group (*p* = 0.06). In addition, 3 sheep from the IB group developed rapid viraemia that was detected at day 3, earlier than for any sheep of the other groups (Fig. 1C). Control sheep groups (injected with medium after exposure to uninfected *Culicoides* bites (control CB) or unexposed (control)) did not present any detectable BTV RNA in their blood. Thus we show that infected bites of *C. nubeculosus* transmit BTV infection to

sheep, as previously shown for *C. soronensis* in experimental conditions [26], and even appear to promote BTV transmission and high viraemia compared to needle transmission. Conversely uninfected bites combined to needle transmission rather tended to reduce BTV viraemia compared to plain needle transmission.

The body temperature monitoring indicated that 5 sheep out of 8 in the ID group and 6 sheep out of 8 in the CB + ID group presented an early temperature rise at 1 dpi, that was not observed in any sheep of the IB group (Fig. 2A), nor in the control sheep. In the ID group, a clear temperature rise, that corresponded to an integrated increase of temperature $>2^{\circ}\text{C}$, was observed between 5 and 9 dpi in 7 out of 8 sheep (Fig. 2A and B). Conversely only 3 sheep in the CB + ID group presented a body temperature rise (Fig. 2A and B). In the IB group, the temperature rise was observed in 6 of 8 sheep, from 6–11 dpi, starting a slightly later but lasting longer than in the ID group (Fig. 2A and B). No temperature rise was observed in the control sheep. Clinical signs were observed starting from day 6 in all infected groups (Fig. 2C). The integrated clinical scores tended to be lower in the CB+ID group and were higher in the IB group compared to the scores in the ID group (*p* = 0.07 and 0.04 respectively, Fig. 2D). The control sheep showed neither symptoms nor body temperature rise (data not shown). There was a significant correlation between the RNA viral load measured in Fig. 1 and the clinical symptom scores reported in Fig. 2 (Figure S1). Altogether, these data show that

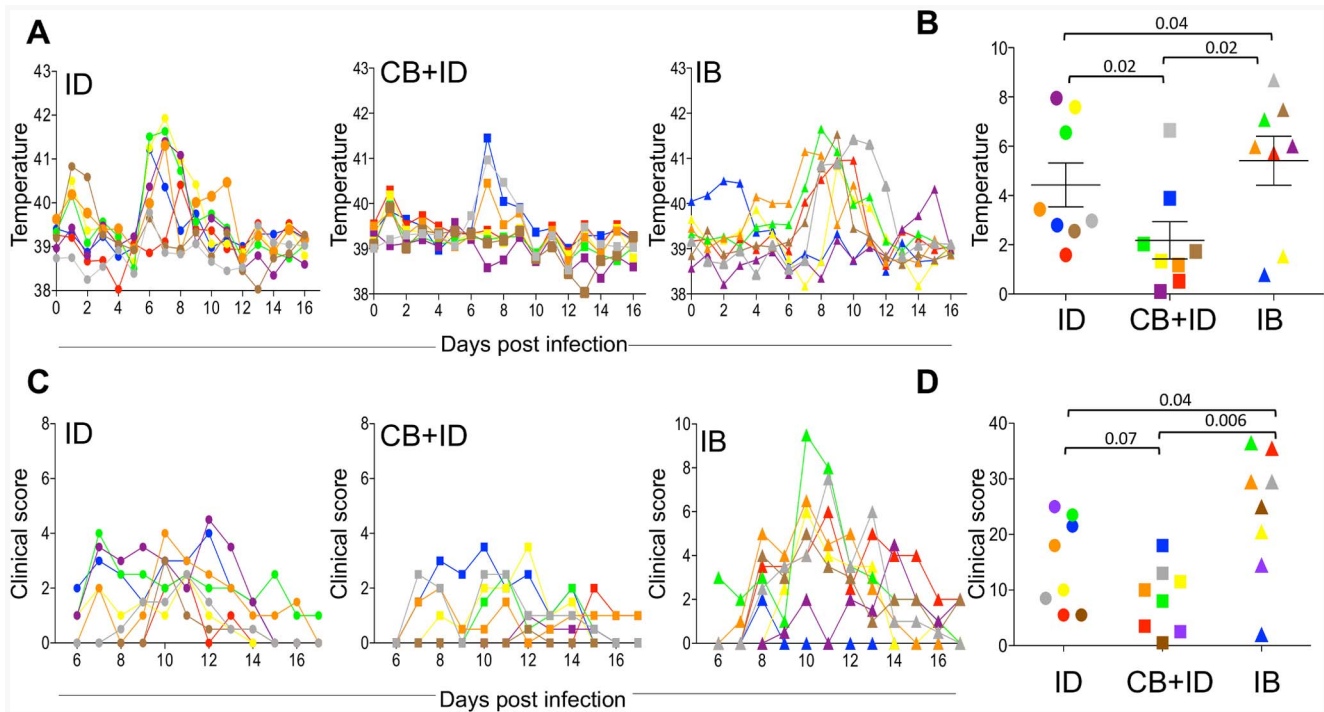


Figure 2. Body temperature and clinical scoring in needle and *C. nubeculosus*-infected sheep. **A.** Body temperature was monitored for each sheep over 17 days. **B.** The increase in temperature over time was calculated relatively to day 0 and the peak area under the curve was calculated for each sheep. **C.** A clinical score was evaluated for each sheep and reported from 6 to 17 dpi in B. **D.** The integrated area under the curve of the clinical scores from 6 to 17 dpi was calculated for each sheep. The same color and shape are used for each sheep as in Fig. 1. Statistical comparisons between 2 groups were done with a *Mann-Whitney U* test and the p values are reported to show significance and major tendencies. doi:10.1371/journal.pone.0083683.g002

infected bite transmission tended to increase the clinical symptoms severity of BTV infection, compared to needle transmission. Conversely, uninfected bites reduced the clinical disease and temperature rise induced by needle transmission.

The intensity of local inflammatory reaction in uninfected *C. nubeculosus* bitten sheep is associated to low viral load

During the course of the clinical monitoring, we observed that many sheep developed inflammatory reactions at the inoculation points (Fig. S2, Fig. 3A). The highest global local reaction, measured by the integrated local inflammatory score over the 0–7 dpi period, was encountered in the CB + ID group, and the intensity of the local reaction was independent of the bite numbers (Fig. S2A and B). The ID and IB groups also presented significant local inflammatory reactions compared to the control group inoculated with medium (Fig. S2A). Interestingly in the CB + ID group, the sheep that showed the highest local reaction (integrated inflammatory score above 17) presented the lowest viral loads, below 3 log₁₀ copies/ml (Fig. 3C). Even in the IB group in which the local inflammatory reaction was weaker than in the CB + ID group (Fig. S2A), the sheep with the lowest inflammatory reaction (integrated inflammatory score below 5) had the highest viral loads, reaching >6 log₁₀ copies/ml (Fig. 3D). In the ID group, the intensity of local inflammation was very weak and could not be related to the viraemia level. These clinical observation data suggest that the uninfected *C. nubeculosus* plus the intradermal BTV8 injection potentiate each other to trigger strong local inflammation, preventing BTV viraemia. These data also lead to propose the hypothesis that the local inflammation, triggered by *Culicoides* skin laceration, may have a negative effect on BTV viraemia onset.

The systemic IFN- induced gene response is delayed in sheep bitten by infected *C. nubeculosus* compared to needle- infected sheep

Expression of several innate immunity genes was detected in the blood cells of the control and infected sheep at 0–5 dpi (Fig. S3). There was no consistent induction of IL-1 β , TNF α , XCL1, and CCL5 mRNA in infected versus control sheep. In the CB + ID group, the IL-8 mRNA expression was enhanced in sheep 920 and 925 (8 fold) and the IL-6 mRNA expression was enhanced in sheep 922 (5 fold), these sheep showing low to no viraemia and also high local inflammatory reaction; these cytokine genes were not induced to the same extent in the other sheep (Fig. S3). Sheep 953 (IB group) appeared as an over-reacting sheep, as it was the only sheep showing upregulation of most cytokine genes in addition to high fever. Interestingly, 2 IFN- induced gene mRNA, CXCL10 and MX1, were augmented at 1 or 2 dpi compared to day 0 in the 2 needle- inoculated groups (ID and CB + ID, Fig. 4) whereas in the IB group, the CXCL10 and MX1 mRNA levels were not augmented at early time points but raised at day 4 in sheep 951, 949 and 952 after the onset of viraemia. The increase in CXCL10 at day one was significantly higher in the ID and CB + ID groups than in the IB group ($p=0.001$ and $p=0.0009$ respectively). The increase in MX1 at day 1 was significantly higher in the ID and CB + ID groups than in the IB group ($p=0.02$ and $p=0.01$, respectively). Uninfected *C. nubeculosus* bite did not affect IFN- induced gene induction (data not shown). Unfortunately, type I IFN could not be detected in the serum of the infected sheep by using a biological assay, possibly due to too low amounts or inappropriate detection time points. These data indicate that IFN- induced gene induction is delayed when BTV8

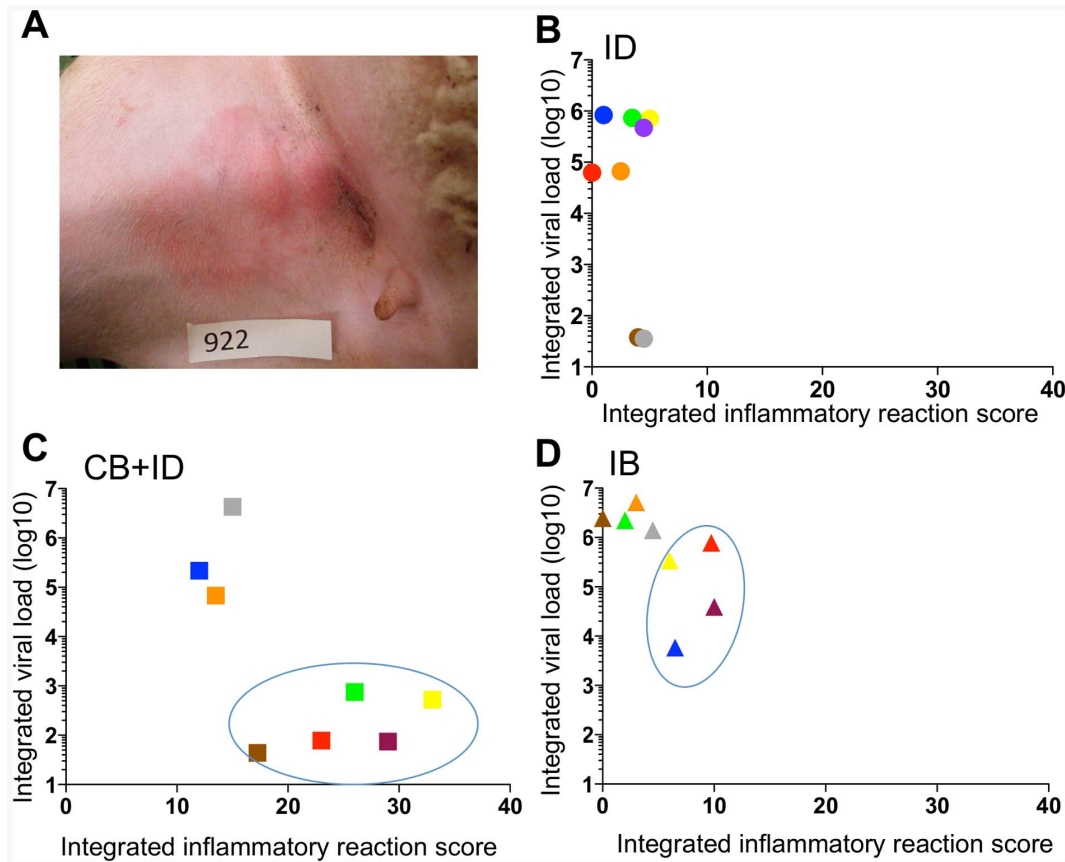


Figure 3. An elevated local inflammatory reaction appears associated to lower viraemia in *C. nubeculosus*-bitten sheep. **A.** A local inflammation at the inoculation point was observed especially in the CB + ID group, with an example of sheep 922 (score=3). **B, C, D.** The local inflammation of the inoculation points was monitored from 0 to 7 dpi (the scores from the right and left inguinal sides were added) and the calculated area under the curve for each sheep is reported with the same color and shape symbol as in Fig. 1. **B:** ID group, **C:** CB + ID group, **D:** IB group. The sheep with higher inflammation and lower viral loads in the CB + ID and IB groups are circled. doi:10.1371/journal.pone.0083683.g003

is transmitted by infected *Culicoides* compared to needle transmission.

The humoral anti-BTV response is delayed in sheep bitten by infected *C. nubeculosus* compared to needle-infected sheep

The anti-BTV antibody response in sera was assessed by anti-VP7 antibody detection using competition ELISA and by neutralizing antibody titration (Fig. 5). Anti-VP7 antibodies were detected as soon as by 5 dpi in the needle- infected sheep and plateaued at 8 dpi in these 2 groups, independently of the viraemia level. Conversely the anti-VP7 serological response was barely detectable at 8 dpi in the IB group and reached plateau values by 15 dpi. The neutralizing antibodies were already detectable at 8 dpi in all the needle- inoculated groups whereas it was not detectable in the IB group. Similar levels of neutralizing antibodies were reached at 15 dpi in all infected groups, independently of the viraemia level. These serological analyses show that the adaptive response to BTV occurred later in the IB group than in the ID and CB + ID groups.

Altogether our results suggest that the systemic innate and adaptive responses to BTV are delayed when BTV is transmitted by infected *C. nubeculosus* bites compared to needle administration, corresponding to higher viremia and more severe clinical disease.

Discussion

We showed here that *C. nubeculosus* bites impacted on the infection of sheep by BTV. Uninfected bites prevented the onset of viraemia and occurrence of symptoms in the majority of the sheep that were needle- inoculated with BTV8, possibly related to the intensity of local inflammatory response. Conversely infected *C. nubeculosus* bites promoted viraemia and disease compared to needle transmission. Both systemic innate and adaptive host responses were delayed in the sheep exposed to infected *C. nubeculosus* bites compared to the needle- inoculated sheep. These data suggest that infected *Culicoides* bites are the optimal way for BTV transmission, by avoiding the development of an early host defense responses.

Inoculation of BTV8 in the *Culicoides* bitten sites rather suppressed the development of viraemia and disease in most sheep, in contrast with Cache Valley virus and West Nile virus administration in the feeding site of mosquito that promoted viral infection [10,11]. *Culicoides* lacerate the skin and trigger local inflammation that was further amplified by the subsequent needle transmission of the virus (Fig. S2A). In this certainly artificial infection method, we observed that the sheep with the highest local inflammatory response had the lowest viral RNA load in the blood, indicating that the local inflammation may prevent systemic infection, viraemia and disease. In addition, in some of these low viraemic sheep, the IL-6 and IL-8 gene expression was

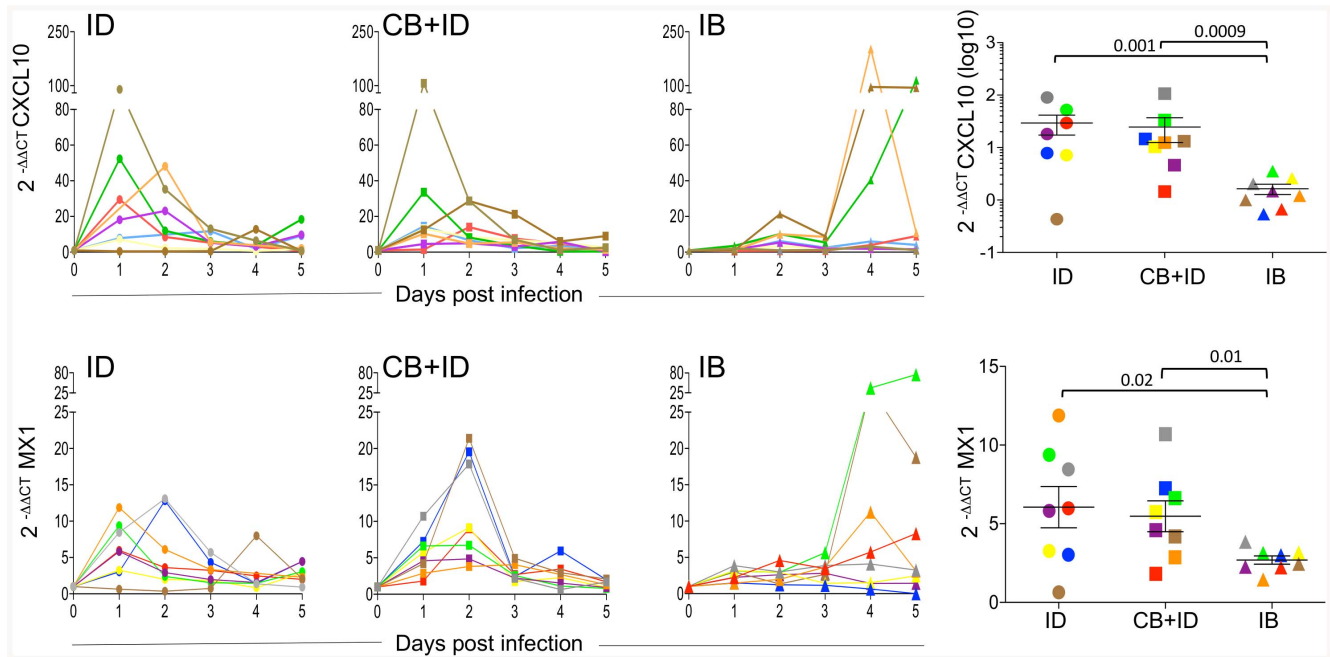


Figure 4. IFN- induced gene expression in blood cells is delayed in *C. nubeculosus*-infected sheep. Total RNA was extracted from blood cells of each sheep from 0–5 dpi. qPCR was performed on reverse transcribed RNA using the primers for CXCL10 and MX1 genes detailed in Table S3. The $2^{-\Delta\Delta CT}$ method was used to calculate the cytokine gene expression relatively the T0 time point level using the ribosomal RPS24 RNA as an internal control. The blood cells from control and control CB group did not show any induction of CXCL10 and MX1 gene expression during the observation period (not shown). The same color and shape symbol are used as in Fig. 1. Statistical comparisons between 2 groups were done with a *Mann-Whitney U* test and the p values are reported to show significance. doi:10.1371/journal.pone.0083683.g004

upregulated at early time points in the blood cells, suggesting occurrence of systemic inflammatory response. It would have been interesting to test the cytokine response within the skin lesions but we favored avoiding possible artifacts induced by taking biopsies. Besides, the sheep of the CB + ID group did all develop anti-VP7 and neutralizing antibody responses, suggesting that sufficient viral amount was detected by the host immune system to trigger high humoral response. It is possible that the local inflammation confined BTV8 to the skin, and prevented dissemination to the blood stream while still allowing immune response onset. The inhibitory action of the control *C. nubeculosus* bite may be explained by the composition of the uninfected *Culicoides* saliva that may trigger inflammation, further potentiated by the intradermal BTV

inoculum. However collection of sufficient saliva from this small insect was not feasible in our experimental set up for directly evaluating the effect of the saliva *in vivo*. It remains possible that the local inflammation induced by *C. nubeculosus* corresponds to a delayed type hypersensitivity reaction (DTH), resulting from a previous exposure of the sheep to *Culicoides* bites before the experiment in BSL3. Indeed in the case of *Leishmania* transmission by sandflies, DTH to insect salivary components was shown to be detrimental to *Leishmania* establishment [27]. In the case of *Culicoides*, DTH reactions have been detected in horses [28], but not in ruminants to our knowledge. In our setting, cautions were taken to avoid exposure to midges during previous housing (insecticide treatment), but midge antigen- directed DTH can not

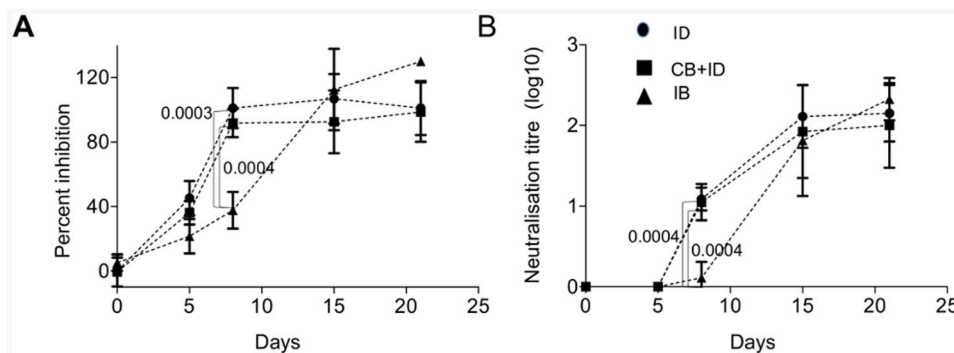


Figure 5. Anti-VP7 and neutralizing antibody response in serum is delayed in *C. nubeculosus*-infected sheep. **A.** Anti-VP7 antibodies were detected by competitive ELISA at 0, 5, 8, 15 and 21 dpi. **B.** Neutralizing antibodies were assessed at 0, 5, 8, 15 and 21 dpi in BHK21 cells by serum neutralization with 50 TCID₅₀ BTV8 (triplicates per sheep and per day). Statistical differences between groups were calculated by a *Mann-Whitney U* test on each day and the p values are reported for day 8. doi:10.1371/journal.pone.0083683.g005

be formally ruled out. In any event, the extent of the local inflammation triggered by uninfected *C. nubeculosus* bites varied between the different sheep and may be brought as an hypothesis for the differential individual receptivity to BTV viraemia. Finally in the IB group, there was also a trend for lower viral load in the sheep with the highest local inflammation, suggesting that individuals with high inflammatory response to *Culicoides* bites may be less susceptible to development of BTV viraemia.

The high efficacy of infected *C. nubeculosus* compared to needle administration to promote high viraemia and more pronounced clinical symptoms is striking. Many factors differ between needle and insect administration that can interfere on each other and promote viral transmission. BTV processed by the insect cells and further modified in the saliva may present biochemical alterations compared to BTV produced in mammalian cells *in vitro*, favoring infection of the sheep. Indeed the VP2 protein from 3 different BTV strains was shown to be cleaved by treatment with saliva from adult *C. soronensis* *in vitro* [17]. The ratio of defective particles versus infectious particles may be different between the virus produced by whole insect and mammalian cell cultures, thus affecting the balance and kinetics of immunity and infection. As uninfected *C. nubeculosus* displayed an inhibitory effect on viral transmission, it remains possible that uninfected and infected *Culicoides* saliva have different composition. Indeed the salivary gland function and virus transmission efficiency changed during the course of WNV infection due to pathological changes in the mosquito [29], resulting in a differential salivary gland transcript profile [30]. In that scenario, infected *C. nubeculosus* saliva may modulate the host response, promote the observed delay in IFN-gene and antibody responses and prevent the early peak of body temperature (Fig. 2, 4 and 5). Indeed in the case of vesicular stomatitis New Jersey virus [31], insect saliva was shown to modulate type I IFN production and to affect host resistance to the virus. Finally the mode of virus inoculation by *Culicoides* may be favorable to hit or recruit the best cells for viral transmission and dissemination.

The viral doses received by the needle- and infected *Culicoides*-inoculated sheep were most probably very different. It is generally believed that the higher the dose, the shorter the incubation period and the time from inoculation to onset of viraemia and clinical signs [32,33,34]. In the case of BTV infection in cattle and sheep, the size of the inoculum did not seem to influence the kinetics of viraemia [35,36,37]. We used here a high dose of virus for challenge, representing a reliable challenge, as done previously in other studies [16,25]. Whereas it was expected that the lower viral inoculum delivered by the infected *Culicoides* would have been an handicap for efficient infection, it is possible that on the contrary, the high viral load in the needle- inoculum may have induced a rapid counteracting immunity that interfered with the infection efficacy. A escalating dose of BTV inoculum in parallel with evaluation of the host immunity response may help to solve this issue.

Altogether our study indicates that infected *C. nubeculosus* are more efficient than the needle- inoculation of high viral dose of BTV to induce high viraemia and BT disease in sheep. *C. nubeculosus* bites had a dual effect in our experiment, with infected bites promoting infection, and uninfected bites inhibiting infection by needle- inoculation. These results should be extended to other *Culicoides* species in order to be generalized. However our results unravel that needle- inoculation of high viral load induce the rapid onset of systemic innate and adaptive immune responses, whereby probably inhibiting the viral infection, and modifying the physiopathological steps of BTV infection occurring in the natural infection. Uninfected bites appeared to enhance the local

inflammation and further impede the infection by needle-inoculated BTV. Comparatively, infected *Culicoides* bites induced delayed immune responses that were detected after the onset of viraemia. The factors implicated in the efficacy of viral transmission by infected *Culicoides*, that are possibly related to the insect effect on the virus and/or on the host, remain to be identified. The understanding of the midge/host/virus interaction will result in the development of pertinent and novel control strategies. Indeed the insect could be targeted by vaccines, such as in the case of the SAP1 protein of sand fly that is considered as a promising target against their pathogen transmission [8]. In addition, inoculation of BTV by infected *Culicoides* stands as an optimal and reliable way to evaluate the physiopathological mechanisms of BTV infection and to test BTV targeted vaccine strategies, that may pertain to the other viruses such as Schmallenberg and African Horse Sickness viruses that are transmitted by *Culicoides* midges.

Supporting Information

Figure S1 Correlation between clinical scores and viral loads across groups. The integrated clinical scores and the integrated viral loads were plotted for each sheep and the correlation between the X/Y value was found significant (Pearson $r=0.5$, R square = 0.25, p-value = 0.0059). The same colors and shape symbols corresponding to each sheep were used as in Fig. 1. (TIF)

Figure S2 Local inflammatory reaction after needle and *C. nubeculosus* transmission of BTV. **A.** The local inflammatory reaction score over the 0–7 dpi period is reported for the different sheep groups. Statistical comparisons between 2 groups were done with a *Mann-Whitney U* test and the p values are reported to show significant differences. **B.** The local inflammatory reaction score of each sheep of the CB+ID was plotted against the number of initial bites and the graph shows lack of correlation. (TIF)

Figure S3 qPCR detection of cytokine gene expression in sheep blood cell RNA. **3A:** TNF α , IL-6, IL-1 β mRNA. **3B:** IL-8, CCL5, XCL1. Total RNA was extracted from blood cells of each sheep from 0–5 day dpi. qPCR was performed on reverse transcribed RNA using the primers for cytokine genes detailed in Table S3. The $2^{-\Delta\Delta CT}$ method was used to calculate the cytokine gene expression relatively the T0 time point level using the ribosomal RPS24 RNA or GAPDH as an internal control. The blood cells from control and control CB group did not show any induction of cytokine gene expression during the observation period. The same colors and shape symbols corresponding to each sheep were used as in Fig. 1. (PDF)

Table S1 BTV RNA copy numbers in infected *C. nubeculosus*. The BTV RNA copy numbers in pools of infected *C. nubeculosus* were assessed by qPCR as described in the material and method section. (DOC)

Table S2 Experimental design. The quantities of BTV administered to the different experimental groups of sheep are reported as TCID50 and RNA copy numbers. (DOC)

Table S3 Clinical scores in BTV trial from 3–17 dpi. The severity of each listed symptom was graded from 0 to 3. The sum of the different symptom scores provided the clinical score per day for each sheep. (DOC)

Table S4 Primers used to detect expression of sheep genes in blood cells (qPCR). Primers for the sheep genes were designed by the Primer Express software and provided >95% amplification efficiency. (DOC)

Acknowledgments

We are grateful to IAH Pirbright for providing the *C. nubeculosus* individuals originating a permanent colony at CReSA facilities, and to Elena Ibáñez and Anna Mayol (UAB) for their help in microcapillary preparation. We

are very grateful to CReSA personnel for their excellence in the animal care and experimental conduct. We are grateful to Claudia Bevilacqua and Lucas Lefevre (platform ICE, Jouy-en-Josas) for their help in blood RNA extraction. We warmly thank Bertrand Schwartz, Pauline Maisonnasse and Frédéric Arnaud for critical reading of the manuscript.

Author Contributions

Conceived and designed the experiments: NP SZ AB JP ISC. Performed the experiments: NP EB CU ST CV CL BC DS JP ISC. Analyzed the data: NP EB CU CL AB JP IJ ISC. Wrote the paper: ISC NP JP EB.

References

- Mercer DR, Castillo-Pizango MJ (2005) Changes in relative species compositions of biting midges (Diptera: Ceratopogonidae) and an outbreak of Oropouche virus in Iquitos, Peru. *Journal of medical entomology* 42: 554–558.
- MacLachlan NJ, Guthrie AJ (2010) Re-emergence of bluetongue, African horse sickness, and other orbivirus diseases. *Veterinary research* 41: 35.
- Bishop JV, Mejia JS, Perez de Leon AA, Tabachnick WJ, Titus RG (2006) Salivary gland extracts of *Culicoides* sonorensis inhibit murine lymphocyte proliferation and no production by macrophages. *Am J Trop Med Hyg* 75: 532–536.
- Schwartz-Cornil I, Mertens PP, Contreras V, Hemati B, Pascale F, et al. (2008) Bluetongue virus: virology, pathogenesis and immunity. *Vet Res* 39: 46.
- Beer M, Conraths FJ, van der Poel WH (2013) ‘Schmallenberg virus’—a novel orthobunyavirus emerging in Europe. *Epidemiology and infection* 141: 1–8.
- Maan NS, Maan S, Belagahalalli MN, Ostlund EN, Johnson DJ, et al. (2012) Identification and differentiation of the twenty six bluetongue virus serotypes by RT-PCR amplification of the serotype-specific genome segment 2. *PLoS one* 7: e32601.
- Wilson AJ, Mellor PS (2009) Bluetongue in Europe: past, present and future. *Philos Trans R Soc Lond B Biol Sci* 364: 2669–2681.
- Fontaine A, Diouf I, Bakkali N, Misse D, Pages F, et al. (2011) Implication of haematophagous arthropod salivary proteins in host-vector interactions. *Parasites & vectors* 4: 187.
- Schneider BS, Higgs S (2008) The enhancement of arbovirus transmission and disease by mosquito saliva is associated with modulation of the host immune response. *Trans R Soc Trop Med Hyg* 102: 400–408.
- Schneider BS, Soong L, Girard YA, Campbell G, Mason P, et al. (2006) Potentiation of West Nile encephalitis by mosquito feeding. *Viral immunology* 19: 74–82.
- Edwards JF, Higgs S, Beaty BJ (1998) Mosquito feeding-induced enhancement of Cache Valley Virus (Bunyaviridae) infection in mice. *J Med Entomol* 35: 261–265.
- Reisen WK, Chiles RE, Kramer LD, Martinez VM, Eldridge BF (2000) Method of infection does not alter response of chicks and house finches to western equine encephalomyelitis and St. Louis encephalitis viruses. *Journal of medical entomology* 37: 250–258.
- Perez de Leon AA, Ribeiro JM, Tabachnick WJ, Valenzuela JG (1997) Identification of a salivary vasodilator in the primary North American vector of bluetongue viruses, *Culicoides variipennis*. *The American journal of tropical medicine and hygiene* 57: 375–381.
- Perez de Leon AA, Valenzuela JG, Tabachnick WJ (1998) Anticoagulant activity in salivary glands of the insect vector *Culicoides variipennis* sonorensis by an inhibitor of factor Xa. *Experimental parasitology* 88: 121–130.
- Takamatsu H, Mellor PS, Mertens PP, Kirkham PA, Burroughs JN, et al. (2003) A possible overwintering mechanism for bluetongue virus in the absence of the insect vector. *J Gen Virol* 84: 227–235.
- Moulin V, Noordegraaf CV, Makoschey B, van der Sluijs M, Veronesi E, et al. (2012) Clinical disease in sheep caused by bluetongue virus serotype 8, and prevention by an inactivated vaccine. *Vaccine* 30: 2228–2235.
- Darapel KE, Langner KF, Nitz M, Anthony SJ, Brownlie J, et al. (2011) Saliva proteins of vector *Culicoides* modify structure and infectivity of bluetongue virus particles. *PLoS One* 6: e17545.
- Boorman J (1974) Maintenance of laboratory colonies of *Culicoides variipennis* (Coq), *Culicoides nubeculosus* (Mg) and *Culicoides riethi* Kieff. (Diptera: Ceratopogonidae). *Bulletin of Entomological Research* 64: 371–377.
- Jennings DM, Mellor PS (1988) The vector potential of British *Culicoides* species for bluetongue virus. *Veterinary microbiology* 17: 1–10.
- Hemati B, Contreras V, Urien C, Bonneau M, Takamatsu HH, et al. (2009) Bluetongue virus targets conventional dendritic cells in skin lymph. *J Virol* 83: 8789–8799.
- Huisman H, van der Walt NT, Cloete M, Erasmus BJ (1987) Isolation of a capsid protein of bluetongue virus that induces a protective immune response in sheep. *Virology* 157: 172–179.
- Darapel KE, Batten CA, Veronesi E, Shaw AE, Anthony S, et al. (2007) Clinical signs and pathology shown by British sheep and cattle infected with bluetongue virus serotype 8 derived from the 2006 outbreak in northern Europe. *Vet Rec* 161: 253–261.
- Attoui H, Billoir F, Biagini P, de Micco P, de Lamballerie X (2000) Complete sequence determination and genetic analysis of Banna virus and Kadapiro virus: proposal for assignment to a new genus (Seadornavirus) within the family Reoviridae. *The Journal of general virology* 81: 1507–1515.
- Stewart M, Bhatia Y, Athmaran TN, Noad R, Gastaldi C, et al. (2010) Validation of a novel approach for the rapid production of immunogenic virus-like particles for bluetongue virus. *Vaccine* 28: 3047–3054.
- Stewart M, Dubois E, Sailleau C, Breard E, Viarouge C, et al. (2013) Bluetongue virus serotype 8 virus-like particles protect sheep against virulent virus infection as a single or multi-serotype cocktail immunogen. *Vaccine* 31: 553–558.
- Baylis M, O’Connell L, Mellor PS (2008) Rates of bluetongue virus transmission between *Culicoides* sonorensis and sheep. *Med Vet Entomol* 22: 228–237.
- Andrade BB, Teixeira CR (2012) Biomarkers for exposure to sand flies bites as tools to aid control of leishmaniasis. *Frontiers in immunology* 3: 121.
- Langner KF, Darapel KE, Drolet BS, Fischer A, Hampel S, et al. (2008) Comparison of cellular and humoral immunoassays for the assessment of summer eczema in horses. *Veterinary immunology and immunopathology* 122: 126–137.
- Girard YA, Schneider BS, McGee CE, Wen J, Han VC, et al. (2007) Salivary gland morphology and virus transmission during long-term cytopathologic West Nile virus infection in *Culex* mosquitoes. *The American journal of tropical medicine and hygiene* 76: 118–128.
- Girard YA, Mayhew GF, Fuchs JF, Li H, Schneider BS, et al. (2010) Transcriptome changes in *Culex quinquefasciatus* (Diptera: Culicidae) salivary glands during West Nile virus infection. *Journal of medical entomology* 47: 421–435.
- Limesand KH, Higgs S, Pearson LD, Beaty BJ (2003) Effect of mosquito salivary gland treatment on vesicular stomatitis New Jersey virus replication and interferon alpha/beta expression in vitro. *J Med Entomol* 40: 199–205.
- Alexandersen S, Quan M, Murphy C, Knight J, Zhang Z (2003) Studies of quantitative parameters of virus excretion and transmission in pigs and cattle experimentally infected with foot-and-mouth disease virus. *Journal of comparative pathology* 129: 268–282.
- Howey R, Quan M, Savill NJ, Matthews L, Alexandersen S, et al. (2009) Effect of the initial dose of foot-and-mouth disease virus on the early viral dynamics within pigs. *Journal of the Royal Society, Interface/the Royal Society* 6: 835–847.
- Quan M, Murphy CM, Zhang Z, Alexandersen S (2004) Determinants of early foot-and-mouth disease virus dynamics in pigs. *Journal of comparative pathology* 131: 294–307.
- Di Galleonardo L, Migliaccio P, Teodori L, Savini G (2011) The length of BTV-8 viraemia in cattle according to infection doses and diagnostic techniques. *Research in veterinary science* 91: 316–320.
- Eschbaumer M, Wackerlin R, Rudolf M, Keller M, König P, et al. (2010) Infectious blood or culture-grown virus: a comparison of bluetongue virus challenge models. *Veterinary microbiology* 146: 150–154.
- Martinelle L, Dal Pozzo F, Sarradin P, De Leeuw I, De Clercq K, et al. (2011) Two alternative inocula to reproduce bluetongue virus serotype 8 disease in calves. *Vaccine* 29: 3600–3609.