

Why are there so many small woodlots in southwestern France landscapes?

Deconchat Marc, Sourdril

Anne, Andrieu Emilie,

Cabanettes Alain, Balent

Gerard

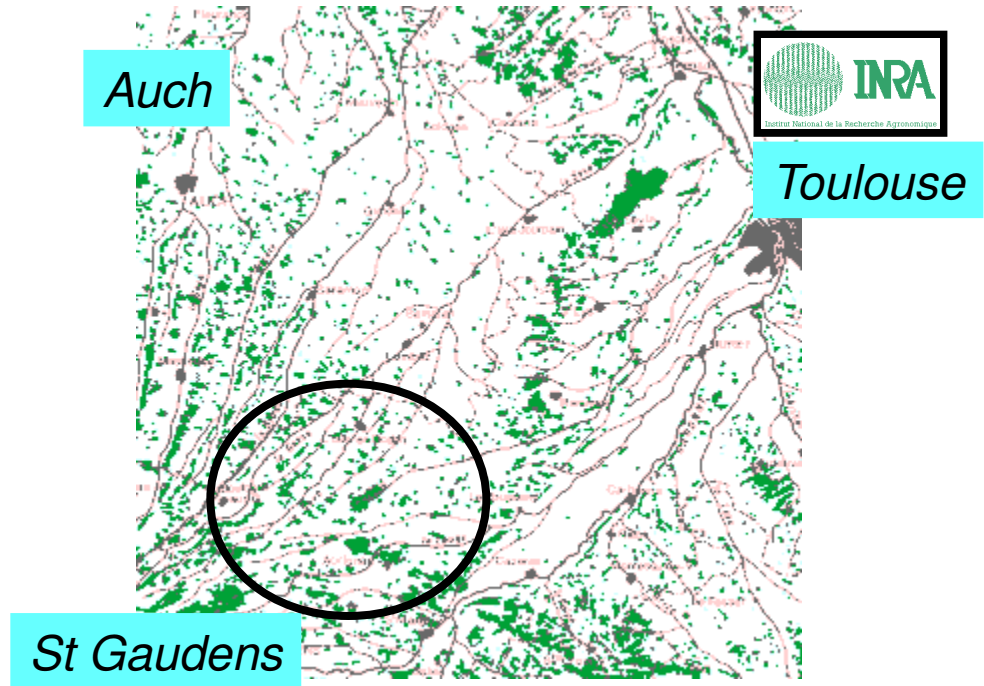


Take home message

- ▶ In some temperate landscapes, small woodlots (forest fragments) are kept,
- ▶ despite unfavorable policies,
- ▶ and managed in traditional ways
- ▶ producing a diversity of structures
- ▶ support for ecosystem services.
- ▶ Theories on social and ecological co-evolution explain the resilience of this systems

Small fragmented forests

- ▶ Long Term Social & Ecological Research platform (LTER-Europe) in south west of France





Ordinary rural landscape



Photo N. Sauget



The foresters / farmers are not rational?

- ▶ What are the determinants of forestry activities that seem to be in opposition with usual recommendations?



Ethnographic approach: how to listen what the actors said (or not)

- ▶ 2 years in 2 small villages
- ▶ Interviews
- ▶ Direct observation of the practices
- ▶ Social context
- ▶ Relationships between actors
- ▶ Historical depth

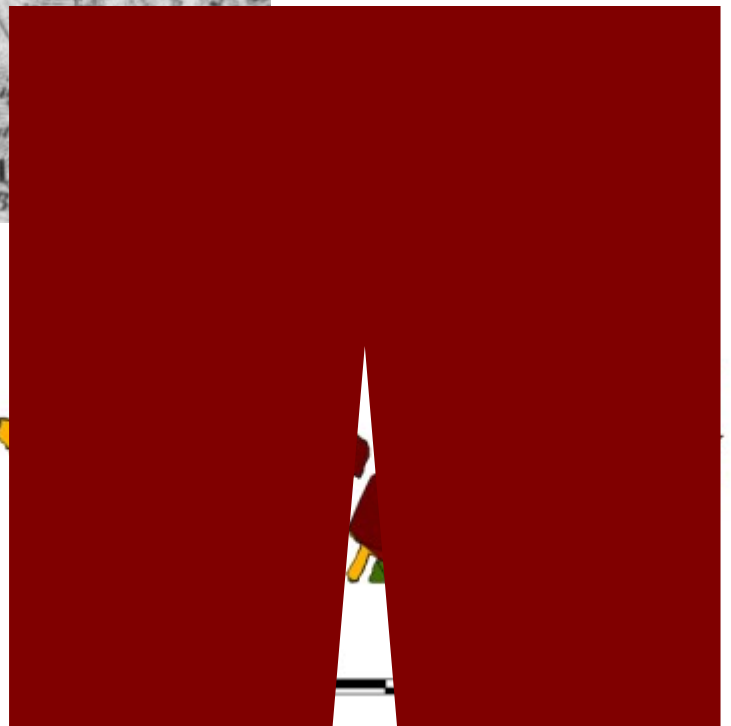


History of forest fragmentation

Army's map
1860



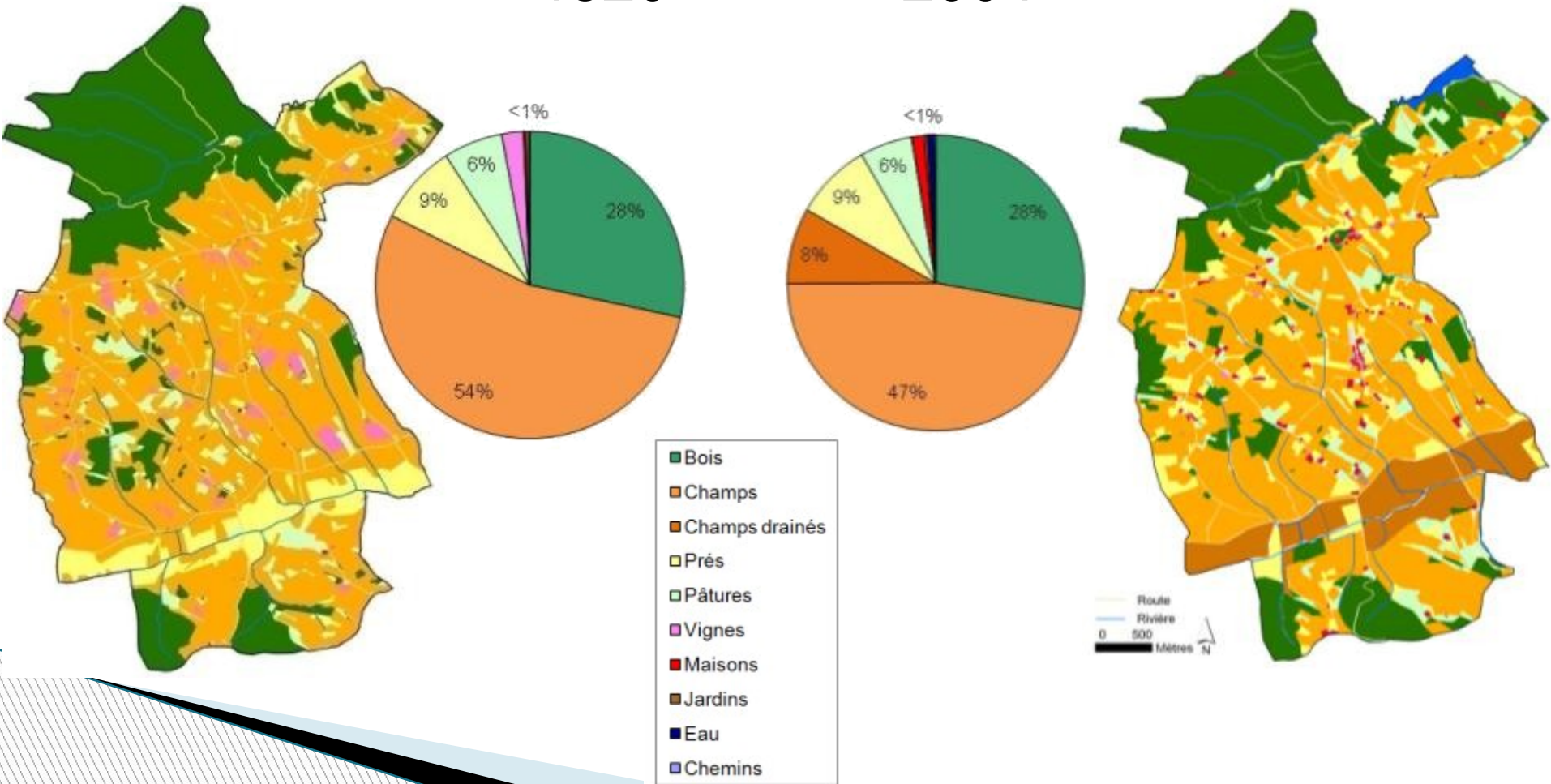
Cassini's map
1750



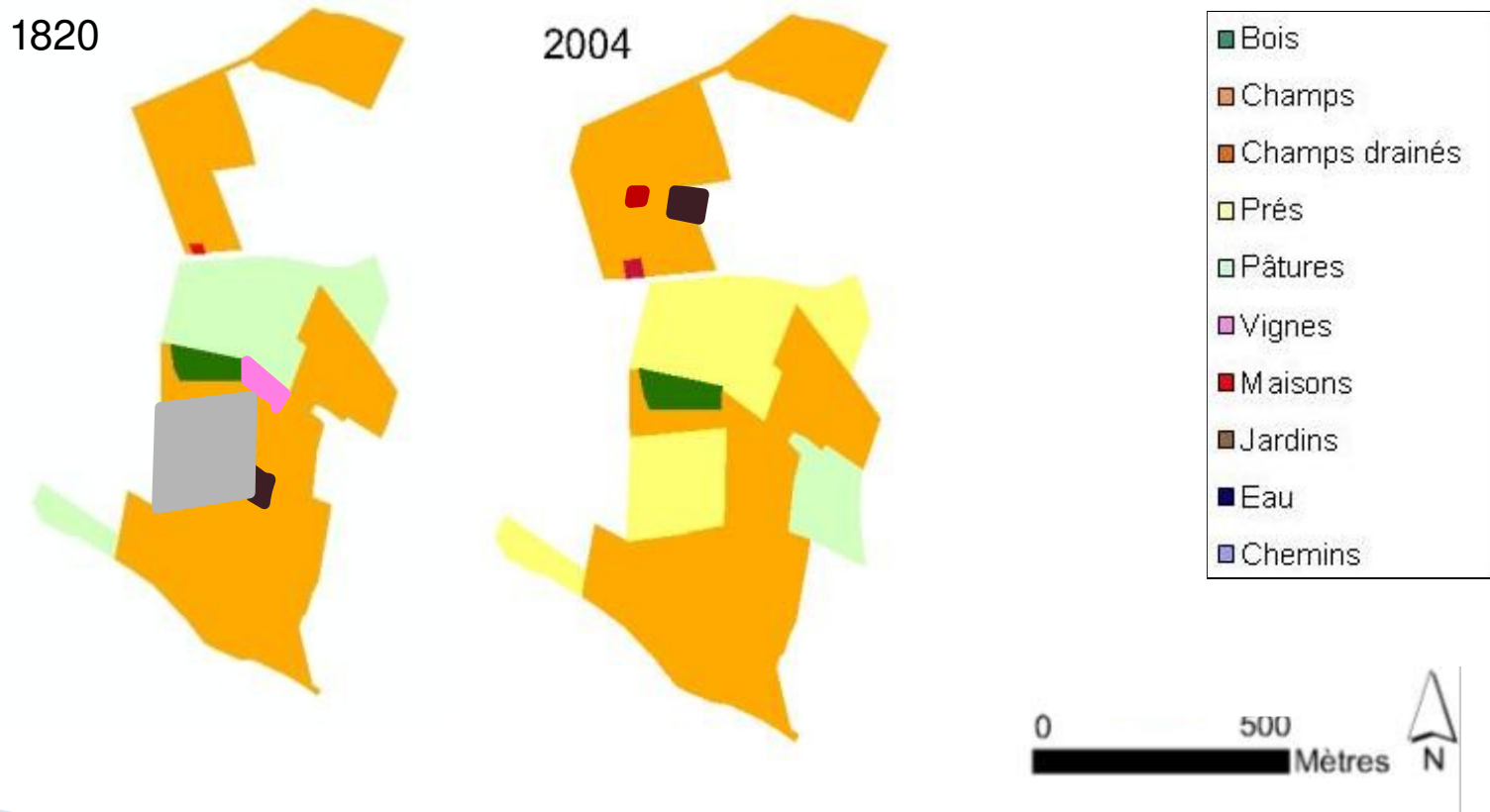
Land diversity maintained at village scale

1820

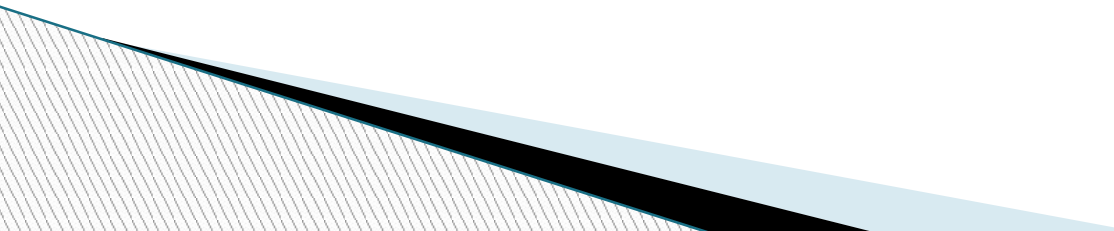
2004



History of forestry in traditional farming



The traditional House centred social system

- ▶ The House (land, building, forest and social status) is transmitted to the oldest heir son (even against the law!)
 - ▶ High social value of the forest: rarely sold
 - ▶ Forest outside the main economical development
- 

Farmers looking for self-sufficient farms



on » Salvy 1974



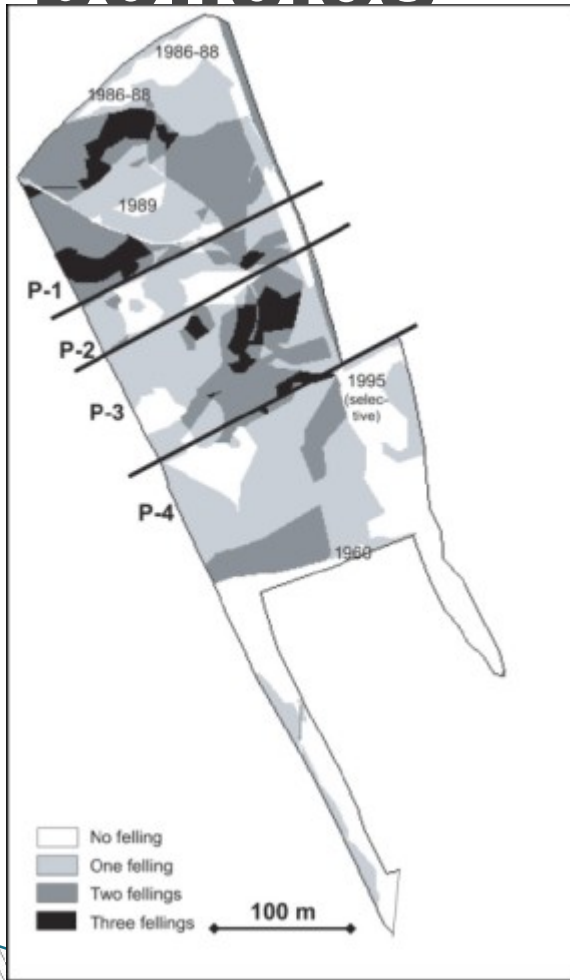
legende:

-  Limites patrimoine
-  Bois de chauffage
-  Espace / gibier
-  Pâturage
-  Bois d'œuvre
-  Champignons

History of forest management



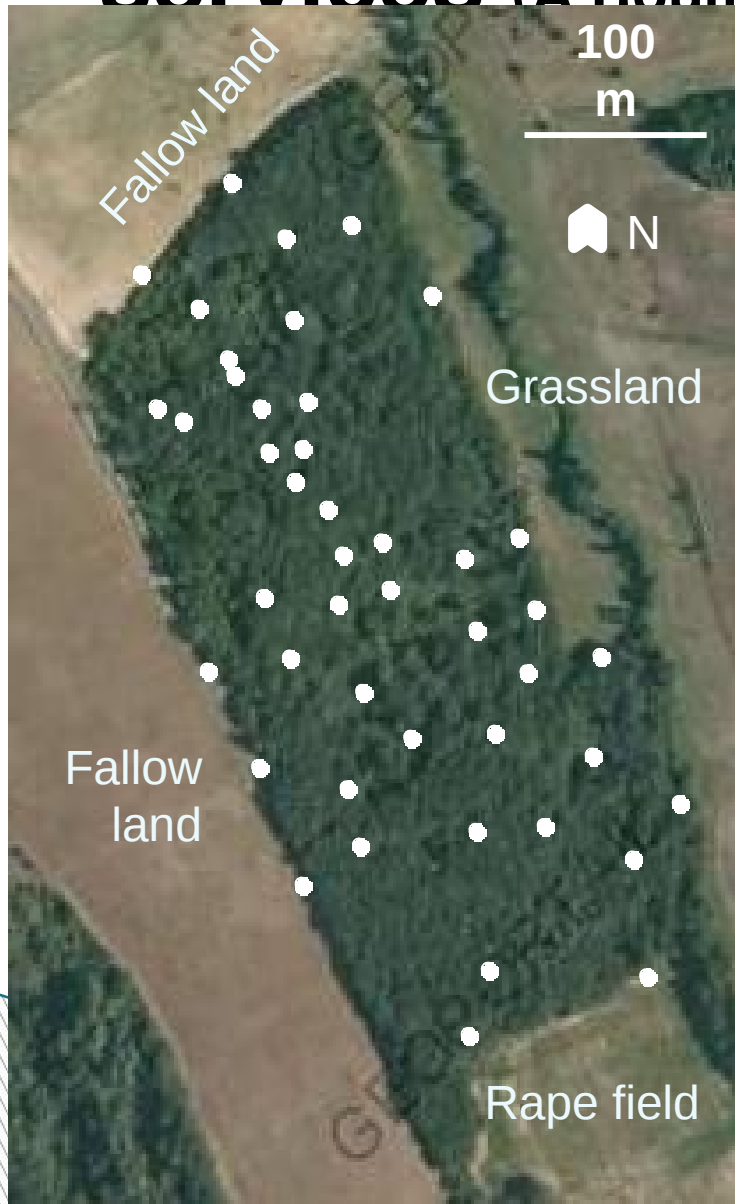
forestry practices and rural policies



Cutting history since 1942 and edge management



Woodlots as a source of ecosystem services (A Boume PhD)



© Roy Anderson

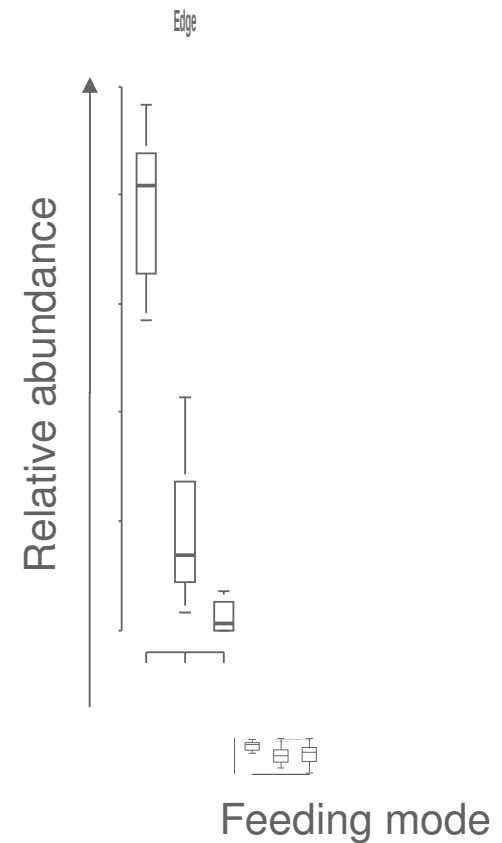
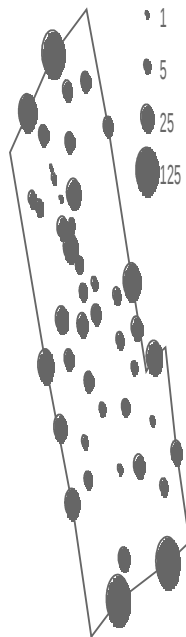


© Roy Anderson

Higher density of ground beetles in edges, with more predators

Density of ground beetles (m⁻²)

Ground beetles density (m²)



► 2014 ground beetles collected, from 48 species

Conclusions

- ▶ Actors are coherent with their own social system and values
- ▶ Social system leaves footprints on the landscape
- ▶ Ethnology for in detail investigations

