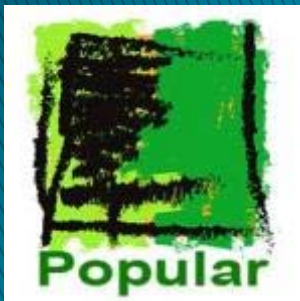




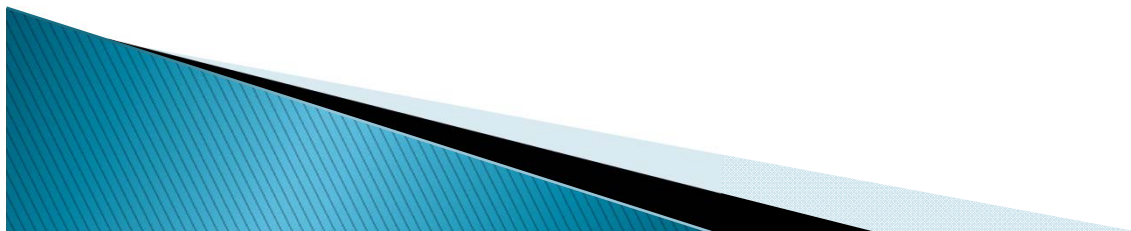
# Why are there so many small woodlots in southwestern France landscapes?

Deconchat Marc, Sourdril Anne, Andrieu Emilie,  
Cabanettes Alain, Balent Gérard



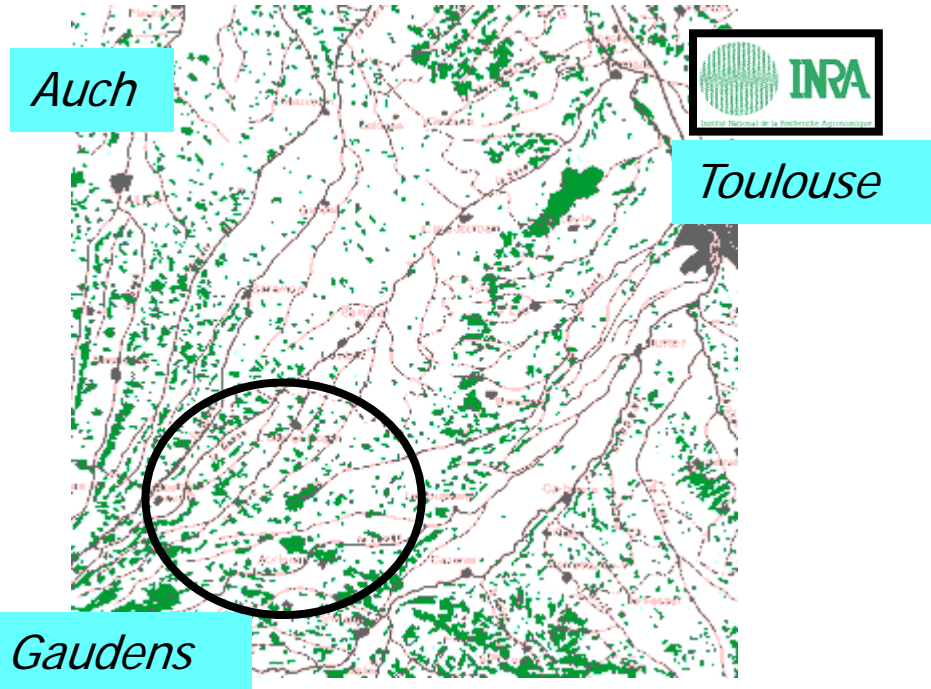
# Take home message

- ▶ In some temperate landscapes, small woodlots (forest fragments) are kept,
- ▶ despite unfavorable policies,
- ▶ and managed in traditional ways
- ▶ producing a diversity of structures
- ▶ support for ecosystem services.
- ▶ Theories on social and ecological co-evolution explain the resilience of this systems



# Small fragmented forests

- ▶ Long Term Social & Ecological Research platform (LTER–Europe) in south west of France





# Ordinary rural landscape



Photo N. Sauget



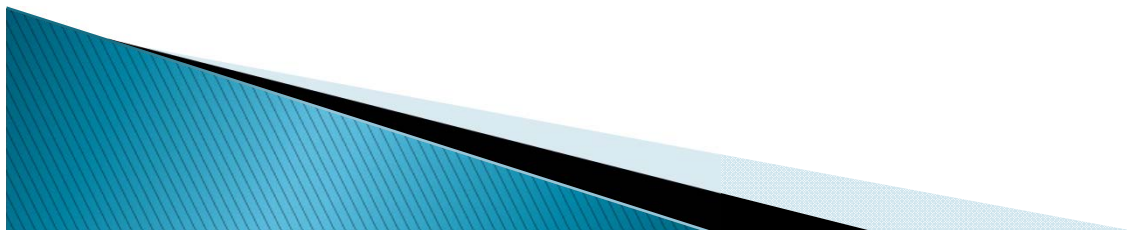
# The foresters / farmers are not rational?

- ▶ What are the determinants of forestry activities that seem to be in opposition with usual recommendations?



# Ethnographic approach: how to listen what the actors said (or not)

- ▶ 2 years in 2 small villages
- ▶ Interviews
- ▶ Direct observation of the practices
- ▶ Social context
- ▶ Relationships between actors
- ▶ Historical depth



# History of forest fragmentation

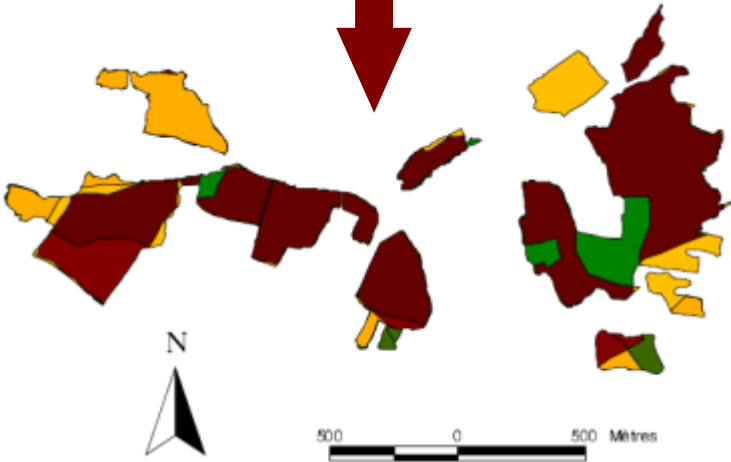
Army's map  
1860



Cassini's map  
1750



current map

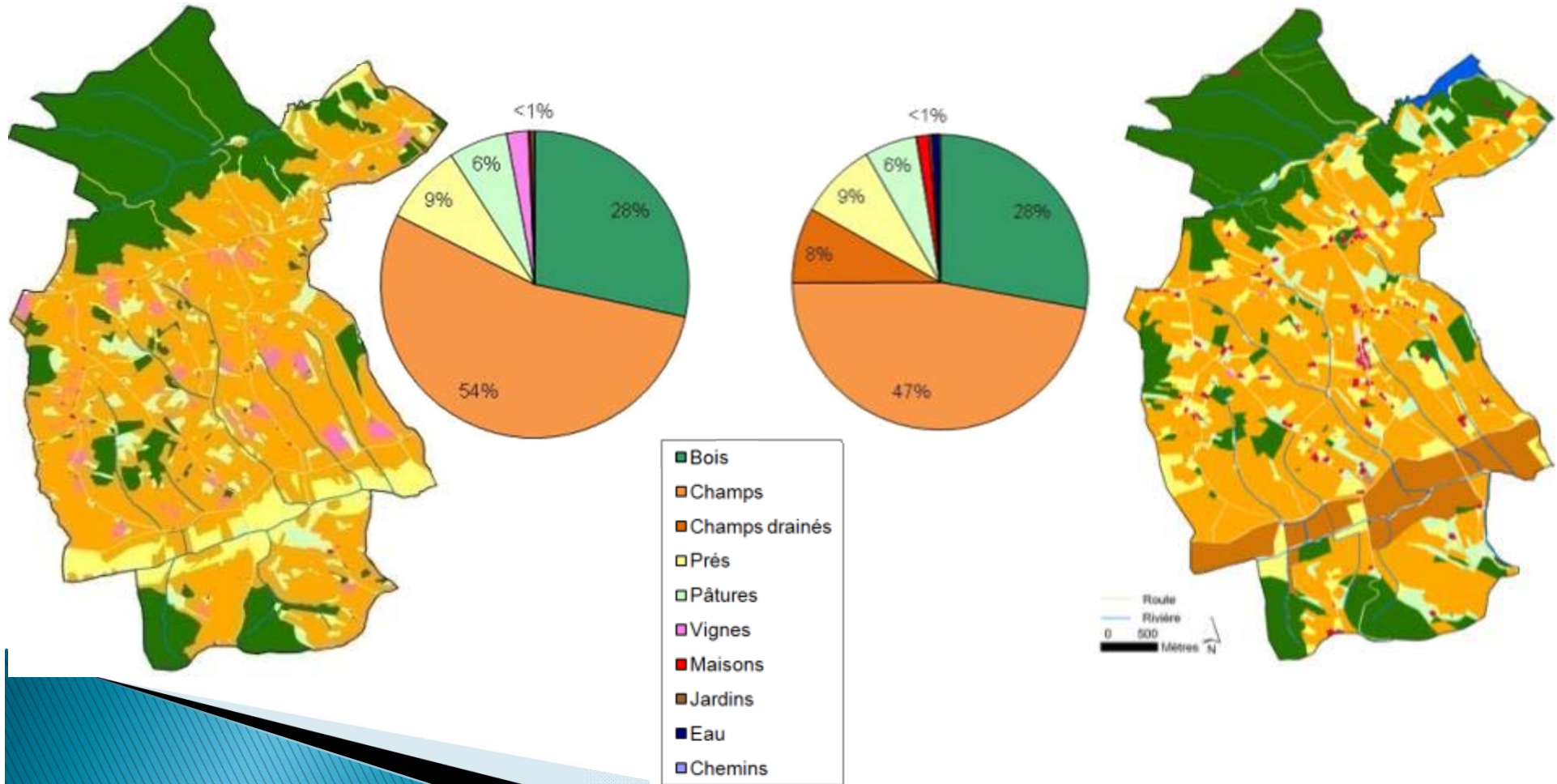




# Land diversity maintained at village scale

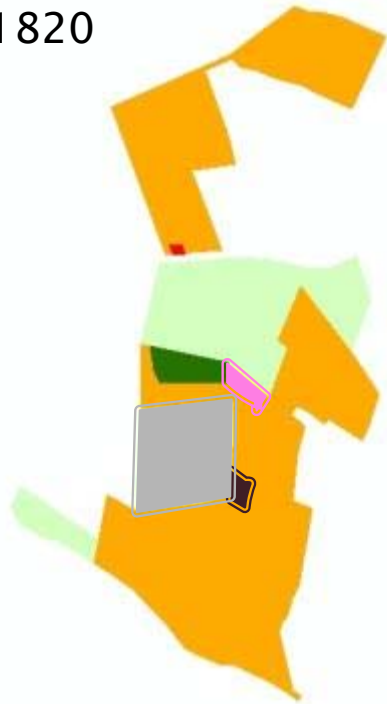
1820

2004



# History of forestry in traditional farming

1820

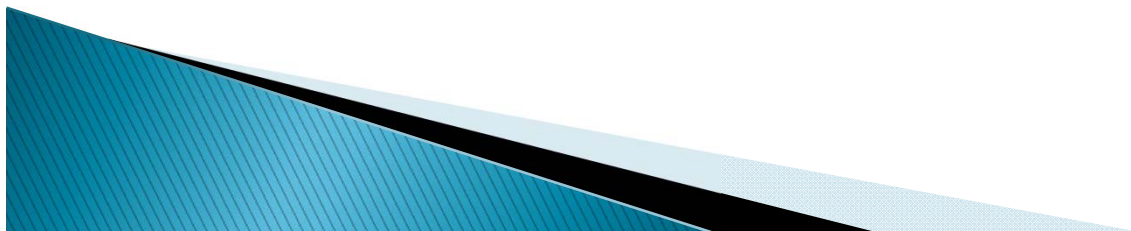


2004



# The traditional House centred social system

- ▶ The House (land, building, forest and social status) is transmitted to the oldest heir son (even against the law!)
- ▶ High social value of the forest: rarely sold
- ▶ Forest outside the main economical development



# Farmers looking for self-sufficient farms

on » Salvy 1974

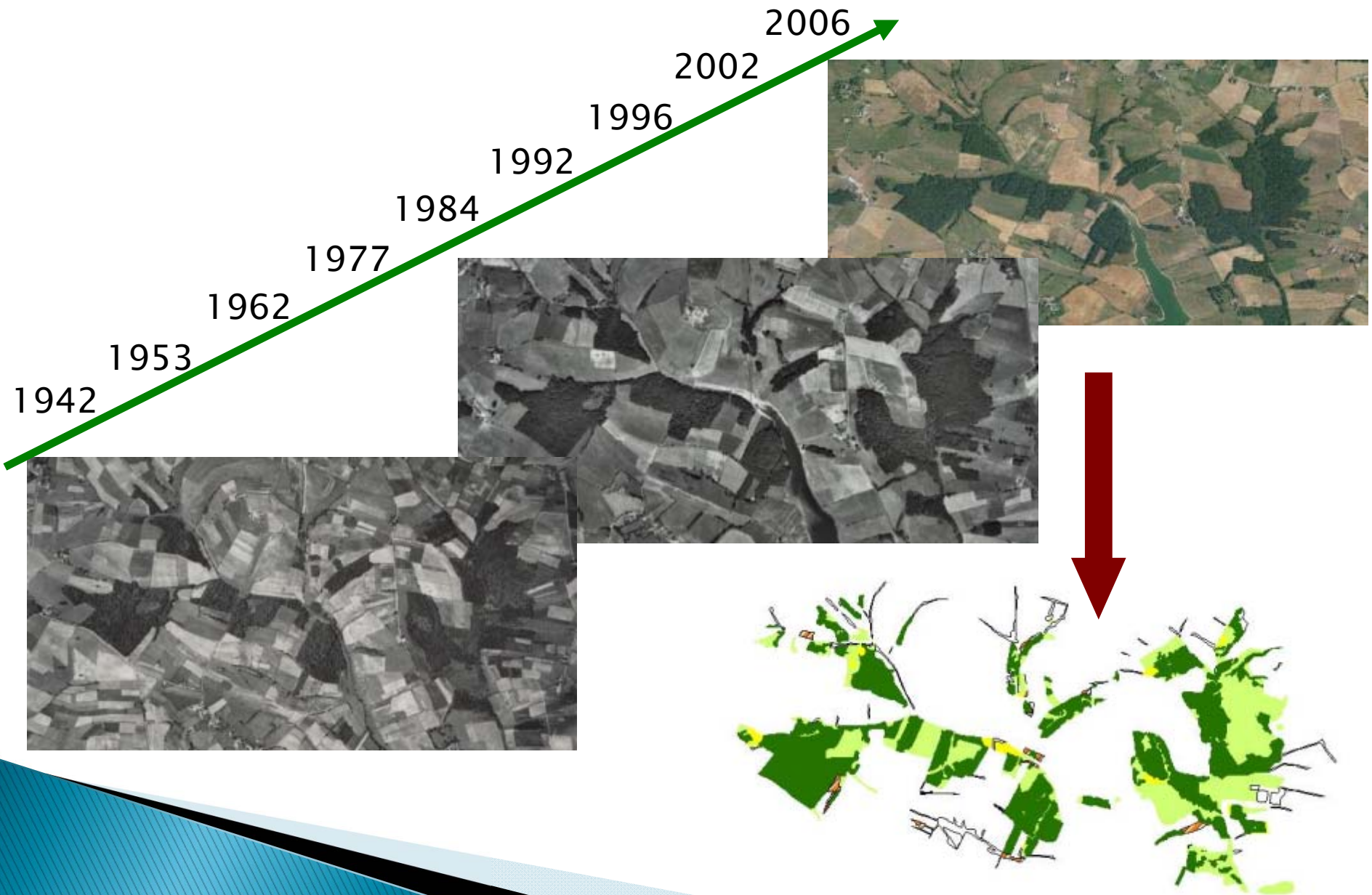
gende:

- Limites patrimoine
- Bois de chauffage
- Espace / gibier
- Pâturage
- Bois d'œuvre
- ◆ Champignons

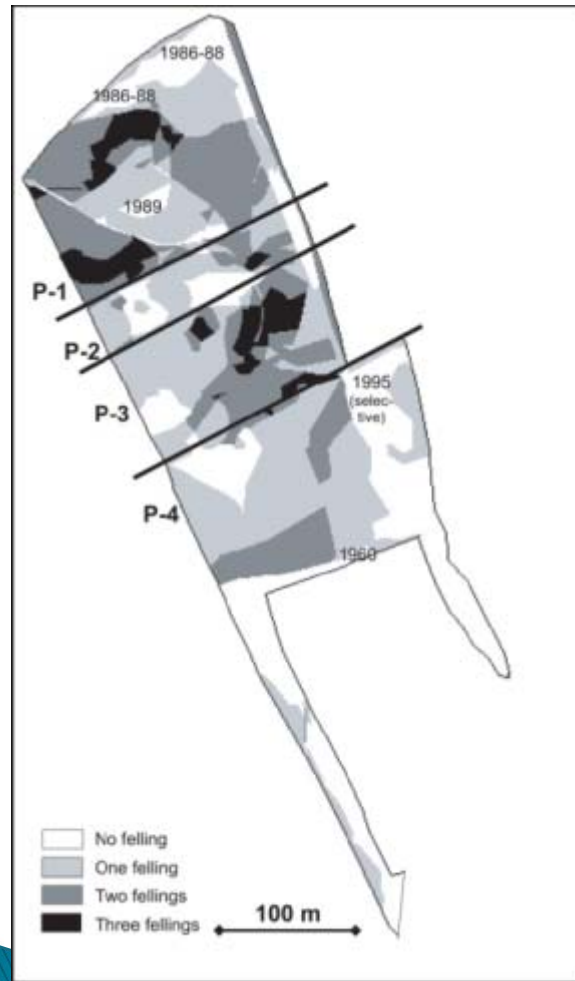
50 m

N

# History of forest management



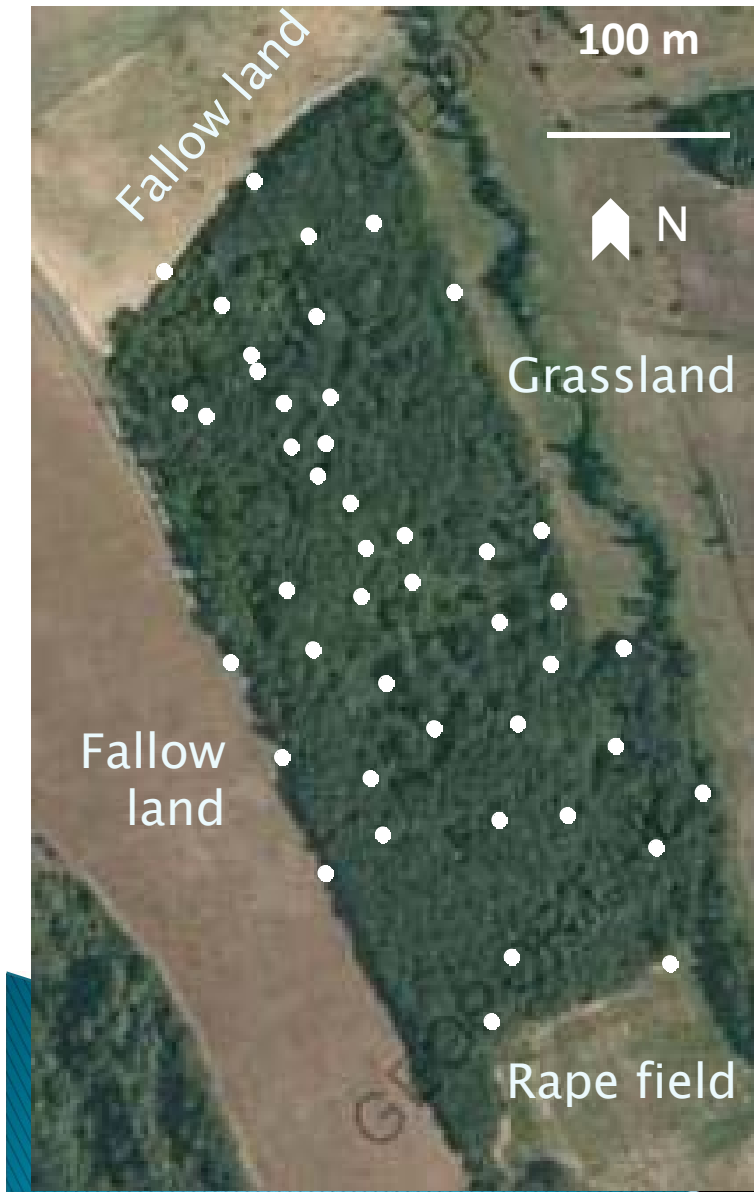
# forestry practices and rural policies



Cutting history since 1942 and edge management



# Woodlots as a source of ecosystem services (A Roume PhD)



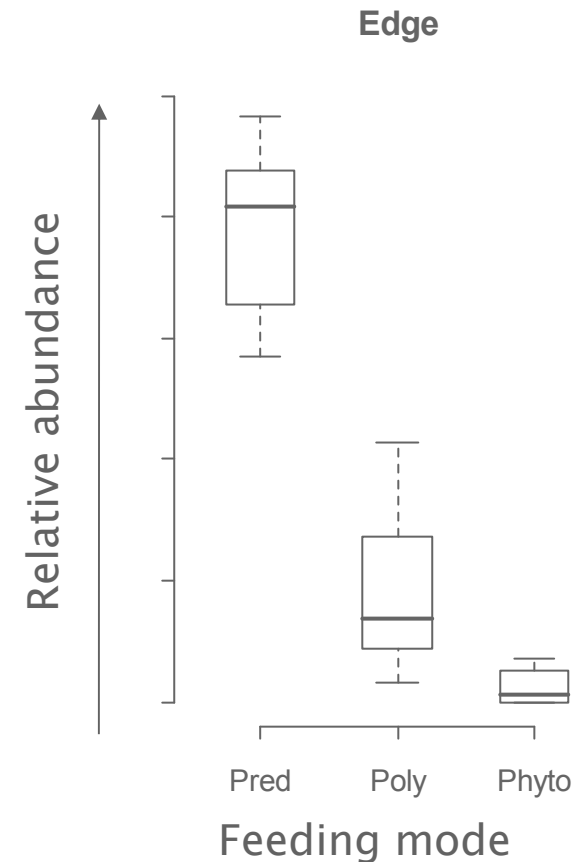
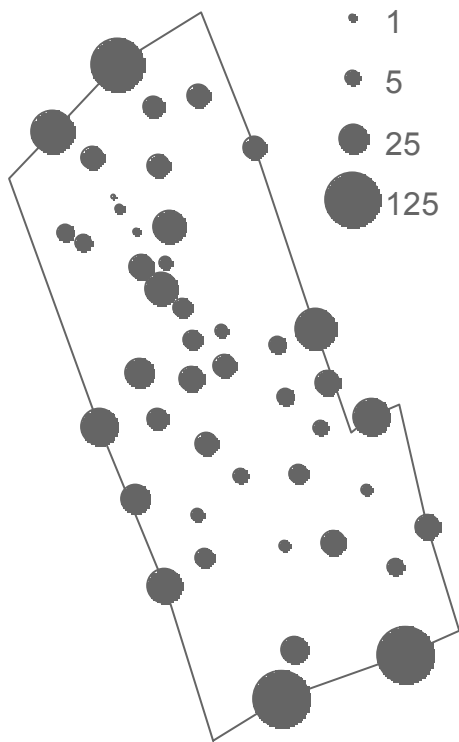
© Roy Anderson



© Roy Anderson

# Higher density of ground beetles in edges, with more predators

Density of ground beetles ( $m^{-2}$ )

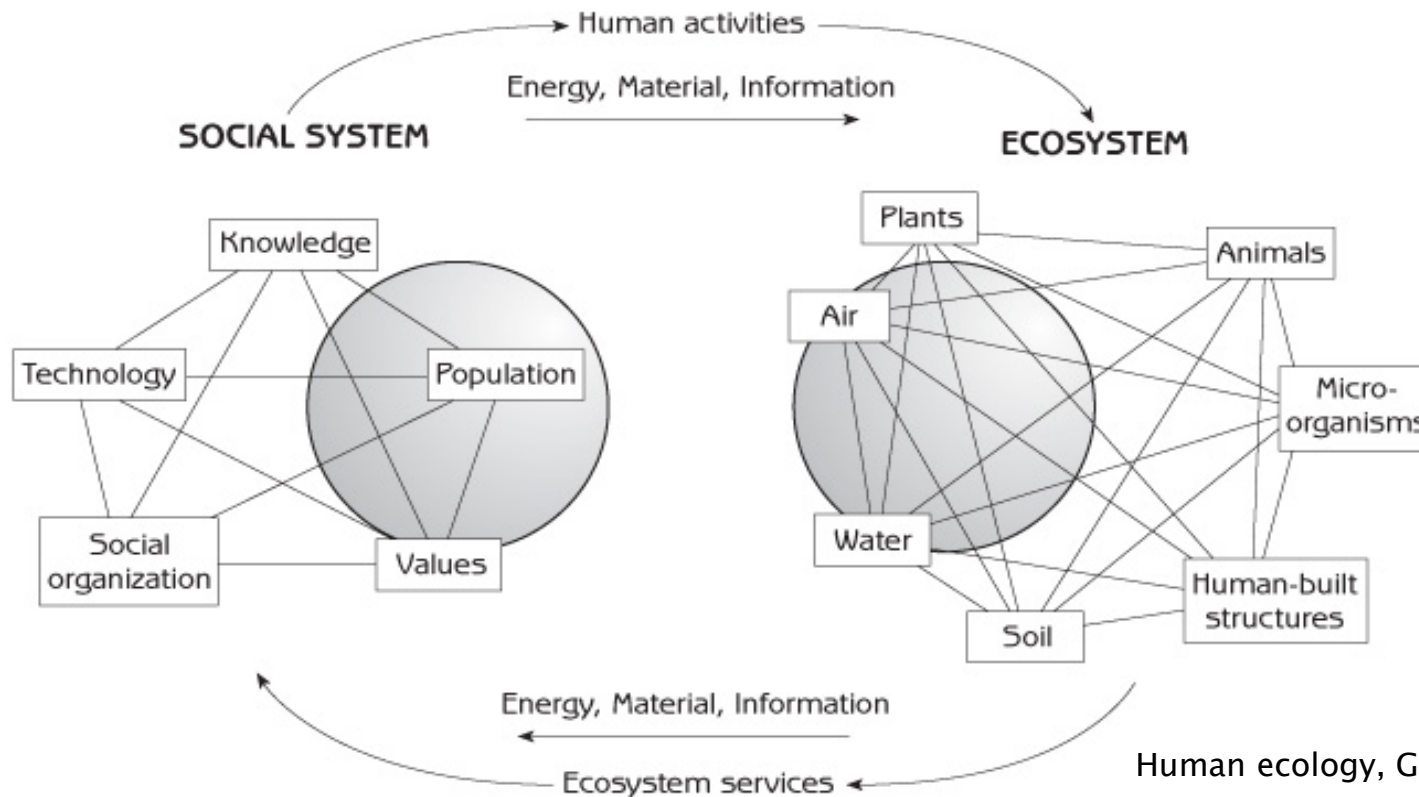


▶ 2014 ground beetles collected, from 48 species



# Conclusions

- ▶ Actors are coherent with their own social system and values
- ▶ Social system leaves footprints on the landscape
- ▶ Ethnology for in detail investigations



Human ecology, G Marten, 2001